



AD-30x2Ri Parts Manual

American Dryer Corporation
88 Currant Road
Fall River MA 02720-4781 USA
Telephone: +1 (508) 678-9000 / Fax: +1 (508) 678-9447
e-mail: techsupport@amdry.com

www.adclaundry.com

Retain This Manual In A Safe Place For Future Reference

This product embodies advanced concepts in engineering, design, and safety. If this product is properly maintained, it will provide many years of safe, efficient, and trouble free operation.

ONLY properly licensed technicians should service this equipment.

OBSERVE ALL SAFETY PRECAUTIONS displayed on the equipment or specified in the installation manual included with the dryer.

The following "FOR YOUR SAFETY" caution must be posted near the dryer in a prominent location.

FOR YOUR SAFETY

Do not store or use gasoline or other flammable vapors and liquids in the vicinity of this or any other appliance.

POUR VOTRE SÉCURITÉ

Ne pas entreposer ni utiliser d'essence ni d'autres vapeurs ou liquides inflammables à proximité de cet appareil ou de tout autre appareil.

We have tried to make this manual as complete as possible and hope you will find it useful. The manufacturer reserves the right to make changes from time to time, without notice or obligation, in prices, specifications, colors, and material, and to change or discontinue models.

Important

For your convenience, log the following information:

DATE OF PURCHASE _____ MODEL NO. **AD-30x2Ri**

RESELLER'S NAME _____

Serial Number(s) _____

Replacement parts can be obtained from your reseller or the ADC factory. When ordering replacement parts from the factory, you can FAX your order to ADC at (508) 678-9447 or telephone your order directly to the ADC Parts Department at (508) 678-9000. Please specify the dryer model number and serial number in addition to the description and part number, so that your order is processed accurately and promptly.

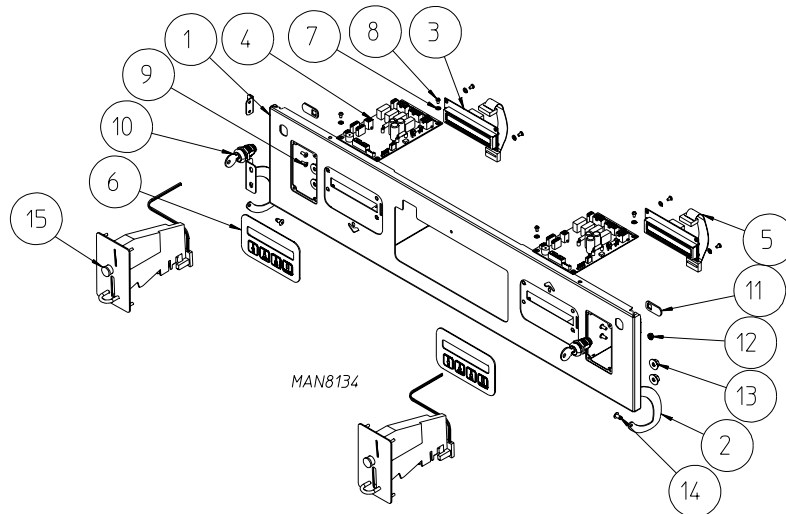
The illustrations on the following pages may not depict your particular dryer exactly. The illustrations are a composite of the various dryer models. Be sure to check the descriptions of the parts thoroughly before ordering.

“IMPORTANT NOTE TO PURCHASER”

Information must be obtained from your local gas supplier on the instructions to be followed if the user smells gas. These instructions must be posted in a prominent location near the dryer.

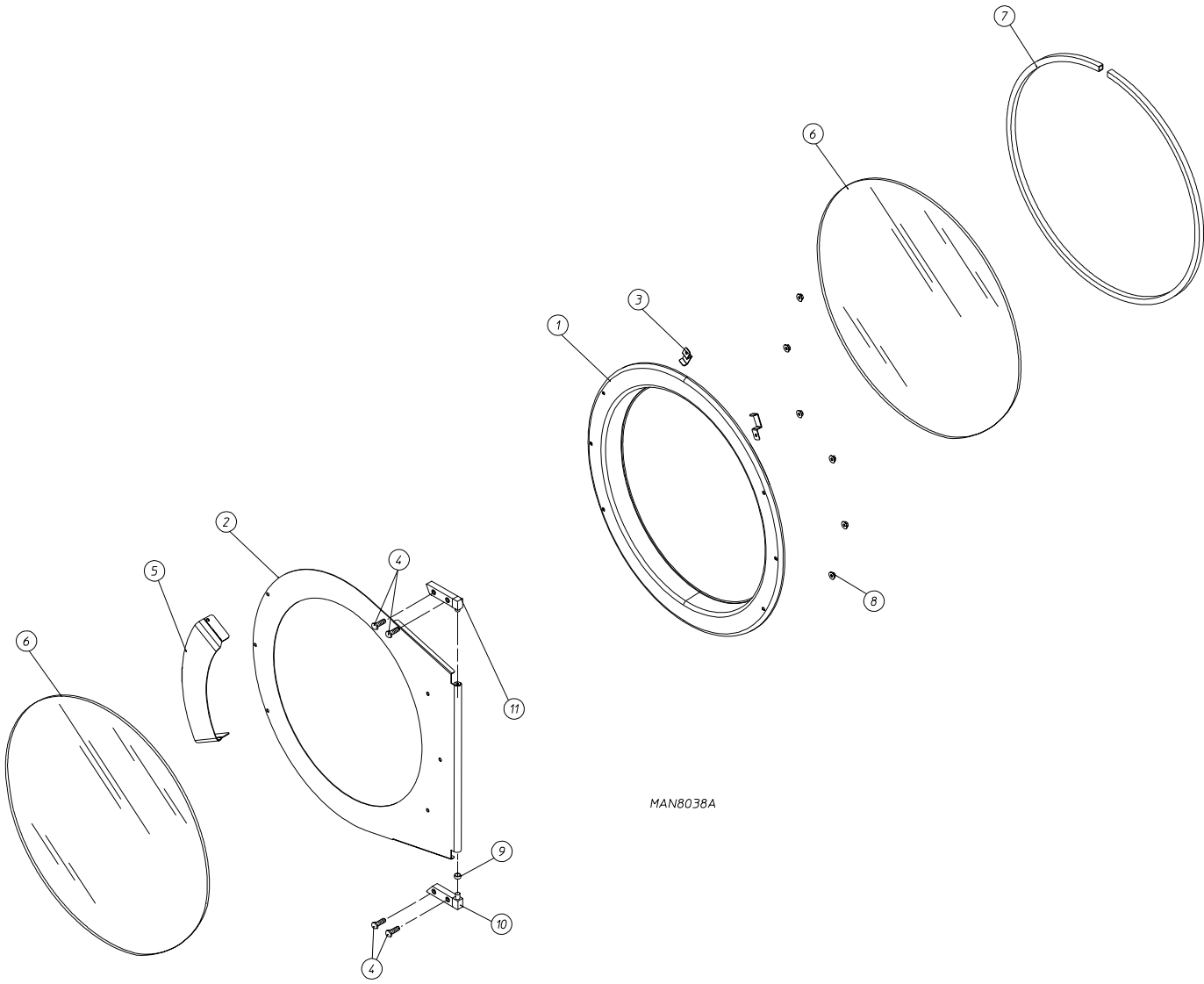
NOTES _____

Phase 7 Coin Control Door Assembly



<u>Illus. No.</u>	<u>Part No.</u>	<u>Qty.</u>	<u>Description</u>
1	830736	1	Coin Control Door Assembly Less Acceptors (includes illus. nos. 1 through 14) (for models mfd. as of June 5, 2015)
	830663	1	Coin Control Door Assembly Less Acceptors (includes illus. nos. 1 through 14) (for models mfd. prior to June 5, 2015)
	830843	1	Non-Coin Control Door Assembly (includes illus. nos. 1 through 14) (for models mfd. as of June 5, 2015)
	830693	1	Non-Coin Control Door Assembly (includes illus. nos. 1 through 14) (for models mfd. prior to June 5, 2015)
	830735	1	Coin Control Panel Weldment (for models mfd. as of June 5, 2015)
	845295	1	Coin Control Panel Weldment with Graphics (for models mfd. prior to June 5, 2015)
	830842	1	Non-Coin Control Panel Weldment (for models mfd. as of June 5, 2015)
	830692	1	Non-Coin Control Panel Weldment with Graphics (for models mfd. prior to June 5, 2015)
2	324537	1	Control Door Hinge
3	137270	2	16" x 1" Large Character Display
4	836111	2	Phase 7.3 Computer
	136016	1	5-amp Fuse for Control Board
5	137250	2	Phase 7 Coin L.C.D. Ribbon Cable
6	112575	2	Phase 7 Keypad
7	153010	8	#6 Internal Star Washer Zinc
8	150005	8	#6-32 x 1/4" Phillips Machine Screw
9	154359	4	5/32" Buttonhead Steel Rivet
10	160015	2	MK-100 Lock with Hardware
11	160032	2	Straight 1" Cam
12	153073	2	#8-32 Nut
13	152014	4	1/4-20 Serrated Hex Flange Nut
14	154219	2	3/16" Pop Rivet
15	852317	2	25¢ Coin Acceptor with Optic Switch
	883774	2	Optic Switch Assembly ... Not Illustrated
	836108	2	Japan / Taiwan Dollar Programmable Acceptor ... Not Illustrated
	823227	2	Malaysian Ringgit Programmable Acceptor ... Not Illustrated

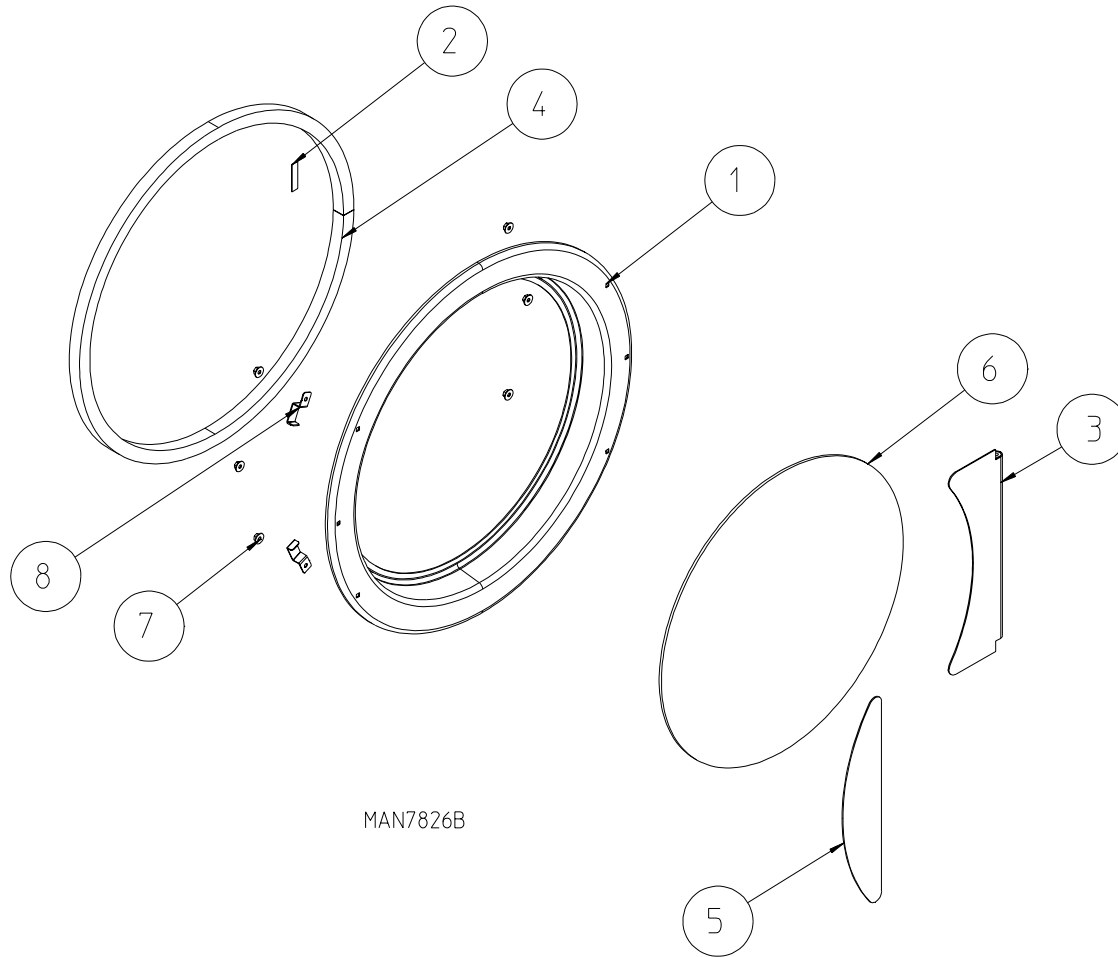
Double Glass Main Door Assembly



MAN8038A

<u>Illus. No.</u>	<u>Part No.</u>	<u>Qty.</u>	<u>Description</u>
1	816499	1	Main Door Assembly Complete (includes illus. nos. 1 through 8)
	816367	1	Main Door Ring Assembly (includes illus. nos. 1, 6, and 7)
2	816498	1	Door Outer Skin Assembly (includes illus. nos. 2 and 6)
3	319298	2	Magnet Bracket
4	150445	4	1/4-20 x 3/4" Black Cap Head Setscrew
5	835634	1	Door Handle Assembly
6	102224	2	Main Door Glass
	401038	1	Black Glass Adhesive (10.3 oz. cartridge)
7	102354	1	Door Gasket
	401038	1	Black Gasket Adhesive (10.3 oz. cartridge)
8	152014	8	1/4-20 Free Spin Wash Nut
9	153031	1	1/4" Nylon Washer
10	881151	1	Black Bottom Hinge Block Assembly (includes illus. nos. 4, 9, and 10)
11	881152	1	Black Top Hinge Block Assembly (includes illus. nos. 4 and 11)

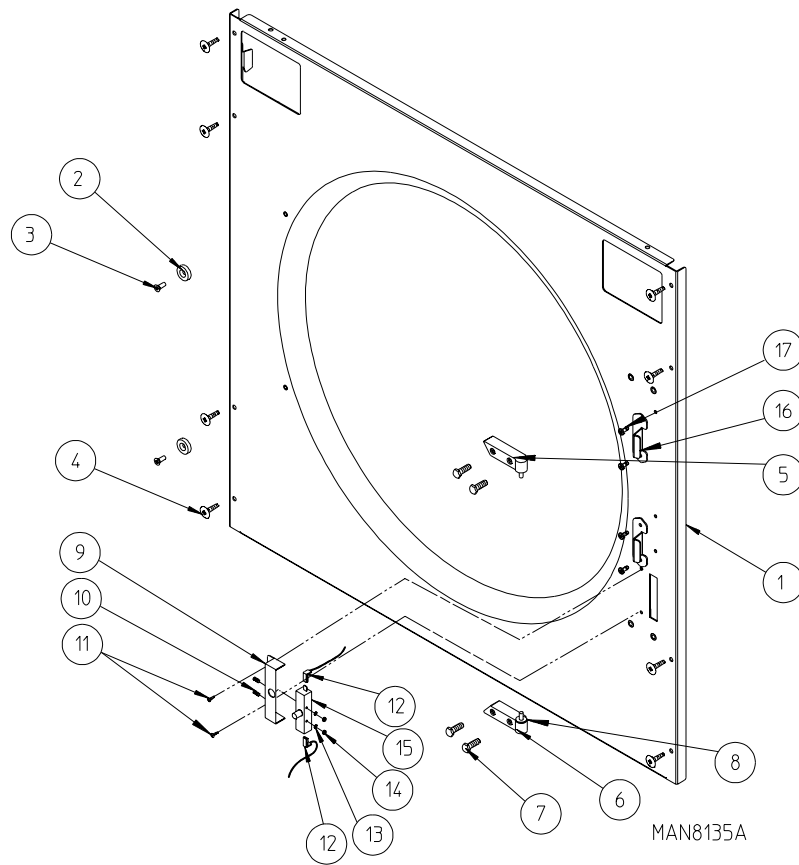
Single Glass Main Door Assembly



MAN7826B

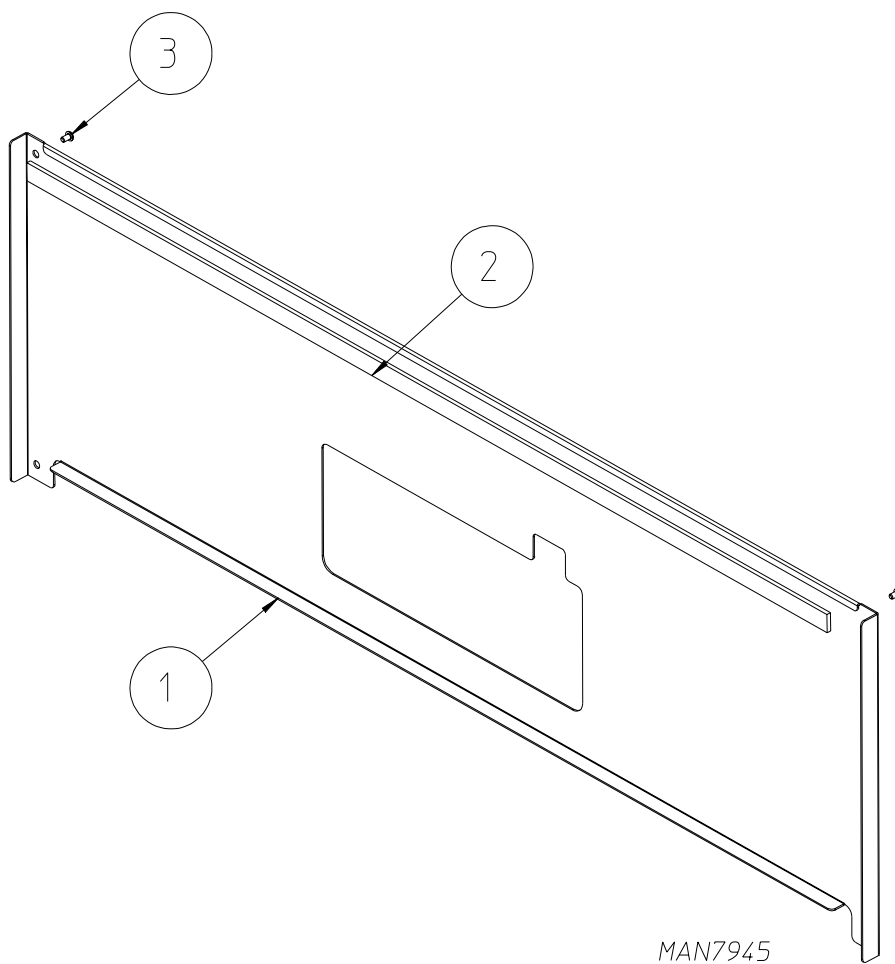
<u>Illus. No.</u>	<u>Part No.</u>	<u>Qty.</u>	<u>Description</u>
1	830738	1	Magnetic Black Main Door Assembly Complete (includes illus. nos. 1 through 8)
2	110006	1	1/2" Black Strapping Tape
3	830737	1	Cold Rolled Steel Main Door Hinge
4	102354	1	Door Gasket
5	835524	1	Cold Rolled Steel Main Door Handle
6	102224	1	Main Door Glass without Notch
	401055	1	Black Silicone ... Not Illustrated
7	152014	6	1/4-20 Hex Flange Nut
8	319298	2	31-1/4" Main Door Magnet Bracket

Cold Rolled Steel Door Front Panel

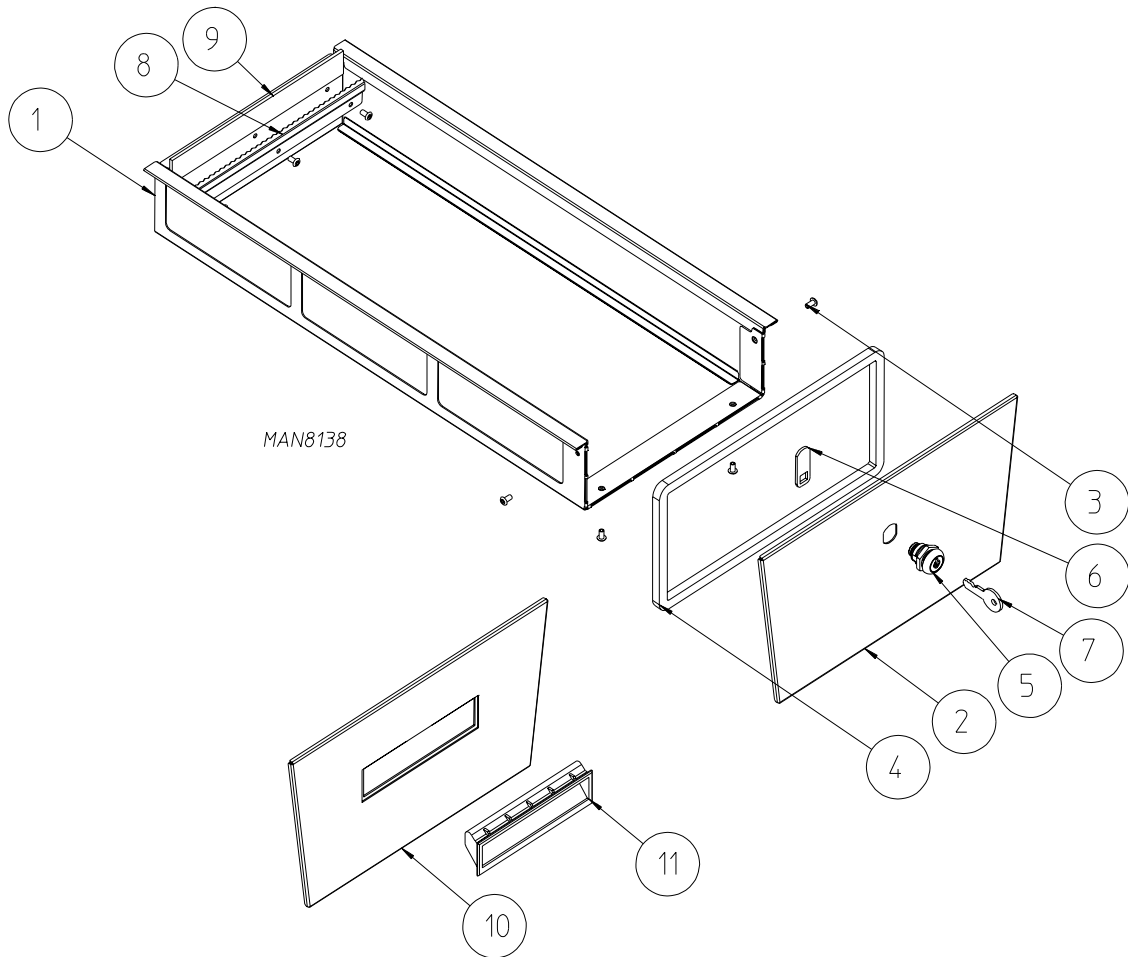


<u>Illus. No.</u>	<u>Part No.</u>	<u>Qty.</u>	<u>Description</u>
1	830754	1	Bottom Right-Hand Front Panel with Coin Box Cutouts (includes illus. nos. 1 through 3, 16 and 17) (for models mfd. as of June 5, 2015)
	830696	1	Bottom Right-Hand Front Panel with Coin Box Cutouts (includes illus. nos. 1 through 3, 16 and 17) (for models mfd. prior to June 5, 2015)
	830755	1	Top Right-Hand Front Panel (includes illus. nos. 1 through 3, 16 and 17) (for models mfd. as of June 5, 2015)
	830698	1	Top Right-Hand Front Panel Assembly with Graphics (includes illus. nos. 1 through 3, 16 and 17) (for models mfd. prior to June 5, 2015)
2	102004	2	Round Door Magnet
3	152223	2	#10-32 x 1/2" Flat Undercut Machine Screw
4	150313	—	#10-16 x 1/2" TORX® Button Screw
5	881152	1	Top Hinge Block "black"
6	881151	1	Bottom Hinge Block "black"
7	150445	2	3/4" x 20" x 3/4" Black Cap Setscrew
8	153051	1	1/4" Nylon Washer
9	353209	1	Main Door Switch Housing
10	150006	1	#6-32 x 7/8" Phillips Screw
11	150201	2	#10-32 x 1/4" Phillips Pan Head Screw
12	122636	2	1/4" Flag Terminal
13	153010	2	#6 Star Washer
14	152013	2	#6-32 Hex Nut
15	137005	1	Main Door Switch
16	335508	2	Door Stop
17	154205	4	Stainless Steel Rivet

Bottom Toe Panel

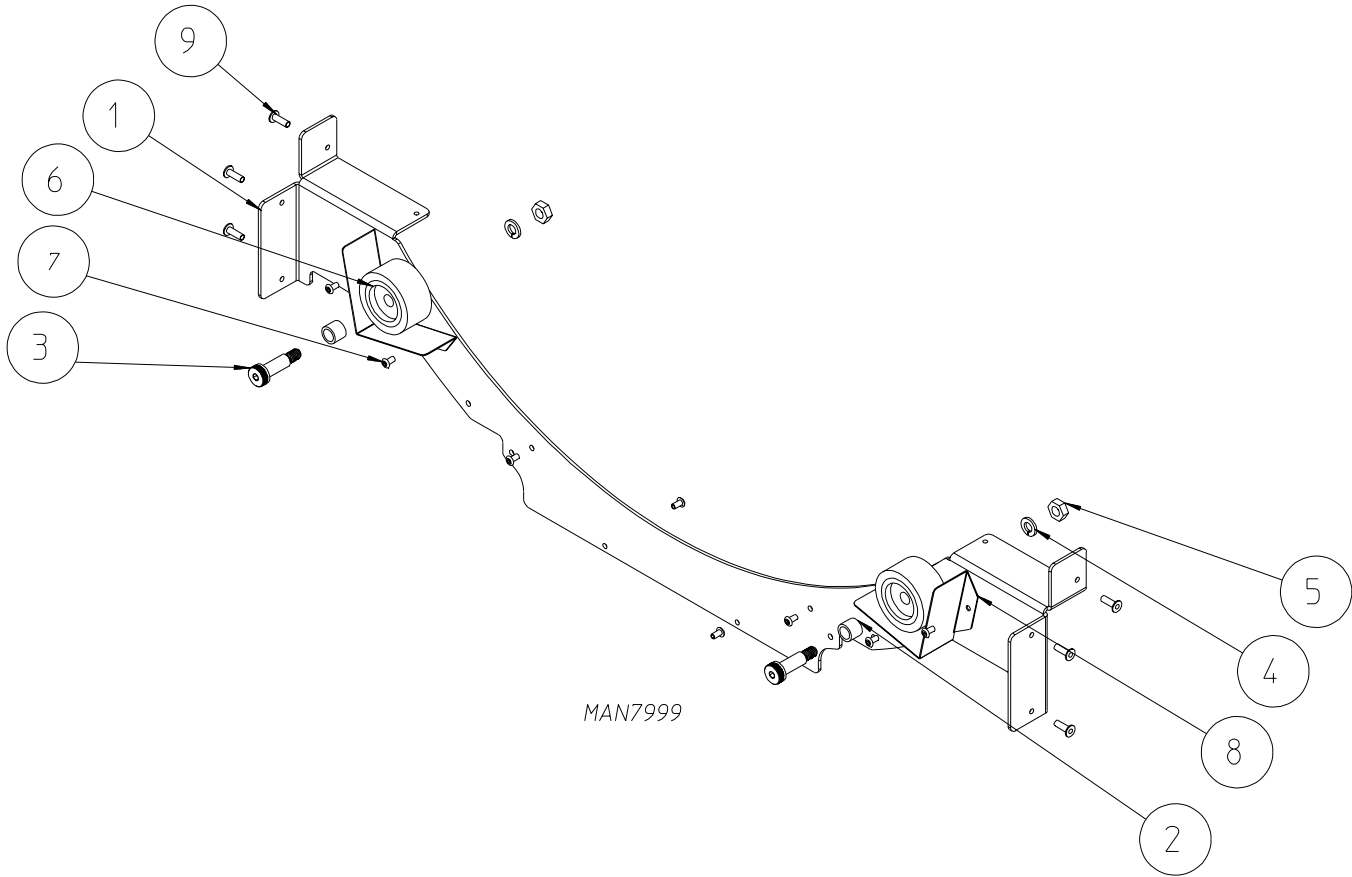


<u>Illus. No.</u>	<u>Part No.</u>	<u>Qty.</u>	<u>Description</u>
1	303436	1	Lower Toe Panel (for models mfd. as of June 5, 2015)
	303375	1	Lower Toe panel (for models mfd. prior to June 5, 2015)
2	117605	3	Noise Suppression Tape
3	150320	4	#10-16 x 3/4" Black TORX® Screw



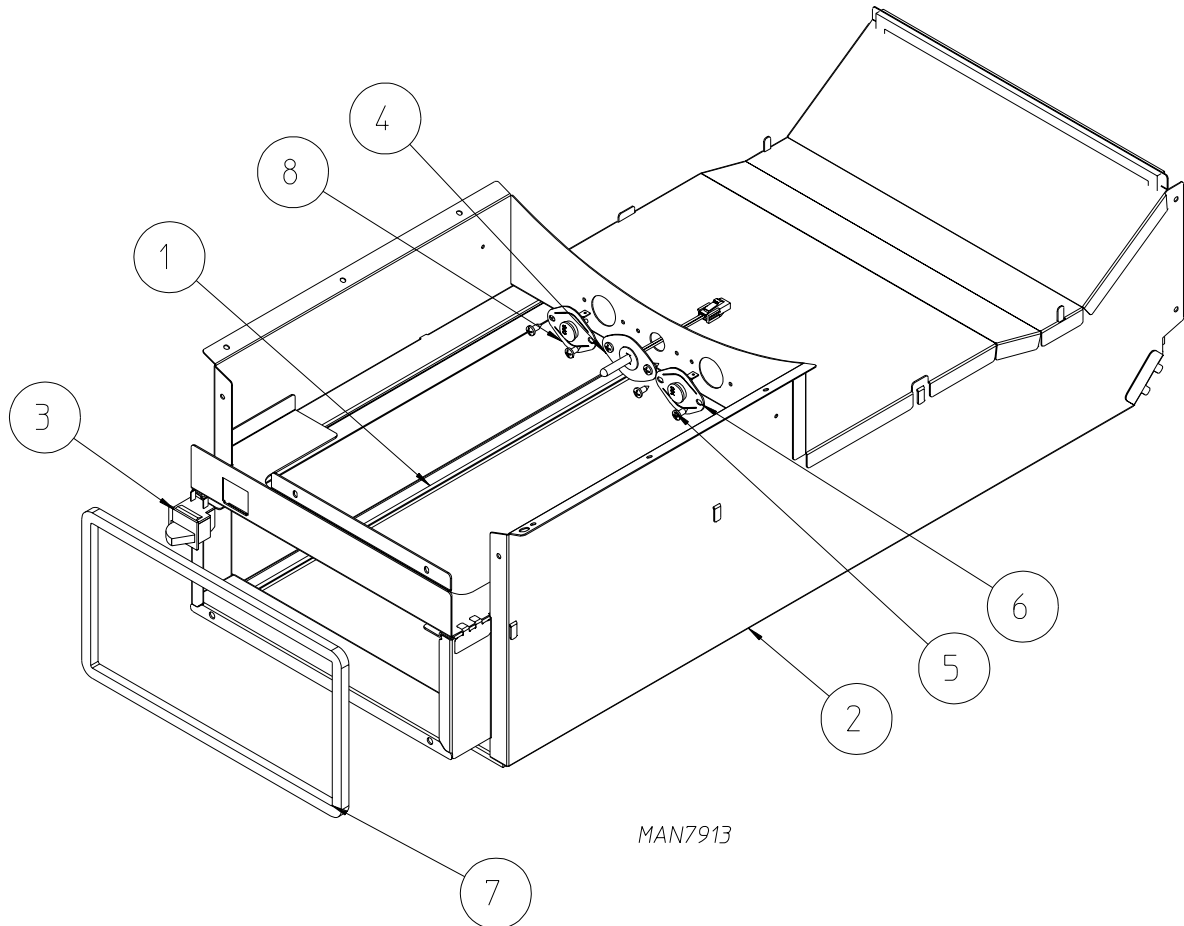
Illus. No.	Part No.	Qty.	Description
1	830689	1	Locking Lint Drawer Assembly CRS (top pocket) (includes illus. nos. 1 through 9)
	884520	1	Locking Lint Drawer Assembly Stainless Steel (bottom pocket) (includes illus. nos. 1 through 9)
	830688	1	Non Locking Lint Drawer Assembly CRS (top pocket) (includes illus. nos. 1, 3, 4, and 8 through 11)
	884521	1	Non Locking Lint Drawer Assembly Stainless Steel (bottom pocket) (includes illus. nos. 1, 3, 4, and 8 through 11)
	830618	1	Lint Drawer Body Weldment
2	830668	1	Locking Lint Drawer Handle Weldment CRS (top pocket)
	830671	1	Locking Lint Drawer Handle Weldment Stainless Steel (bottom pocket)
3	154211	7	5/32" Buttonhead Rivet, Zinc
4	117617	1	Sponge Tape
5	160001	1	AD-100 Lock ONLY
6	160016	1	1-1/4" Cam for MK-100 Security Lock
7	160103	1	Key for AD-100 Lock
8	303324	1	Lint Drawer Felt Retainer
9	116049	1	8" x 1" x 1/8" Felt
10	830667	1	Non-Locking Lint Drawer Handle Weldment CRS (top pocket)
	830672	1	Non-Locking Lint Drawer Handle Weldment Stainless Steel (bottom pocket)
11	170224	1	Lint Drawer Handle for Non Locking Drawer ONLY

Front Wheel Bracket Assembly



MAN7999

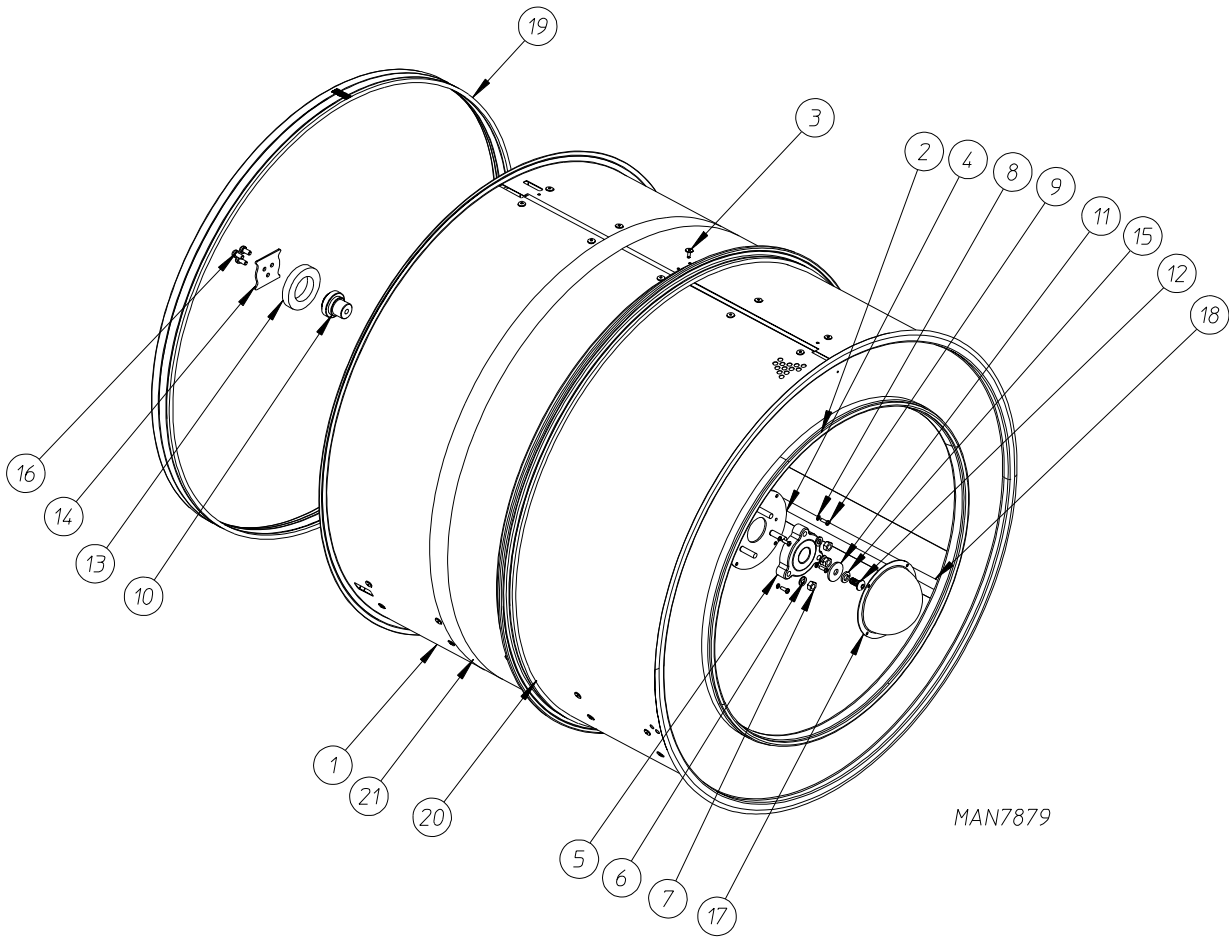
<u>Illus. No.</u>	<u>Part No.</u>	<u>Qty.</u>	<u>Description</u>
1	830612	1	Front Wheel Bracket Assembly (includes illus. nos. 1 through 9)
	303383	1	Front Wheel Support Bracket Only
2	154284	2	Tumbler Wheel Spacer
3	154264	2	10M8 x 25 mm Shoulder Screw
4	153002	2	5/16" Black Washer
5	154013	2	M8 Hex Nut
6	180050	2	Tumbler Wheel
7	154200	8	5/32" Pop Rivet
8	303331	1	2" Wheel Guard
9	154220	6	3/16" Pop Rivet



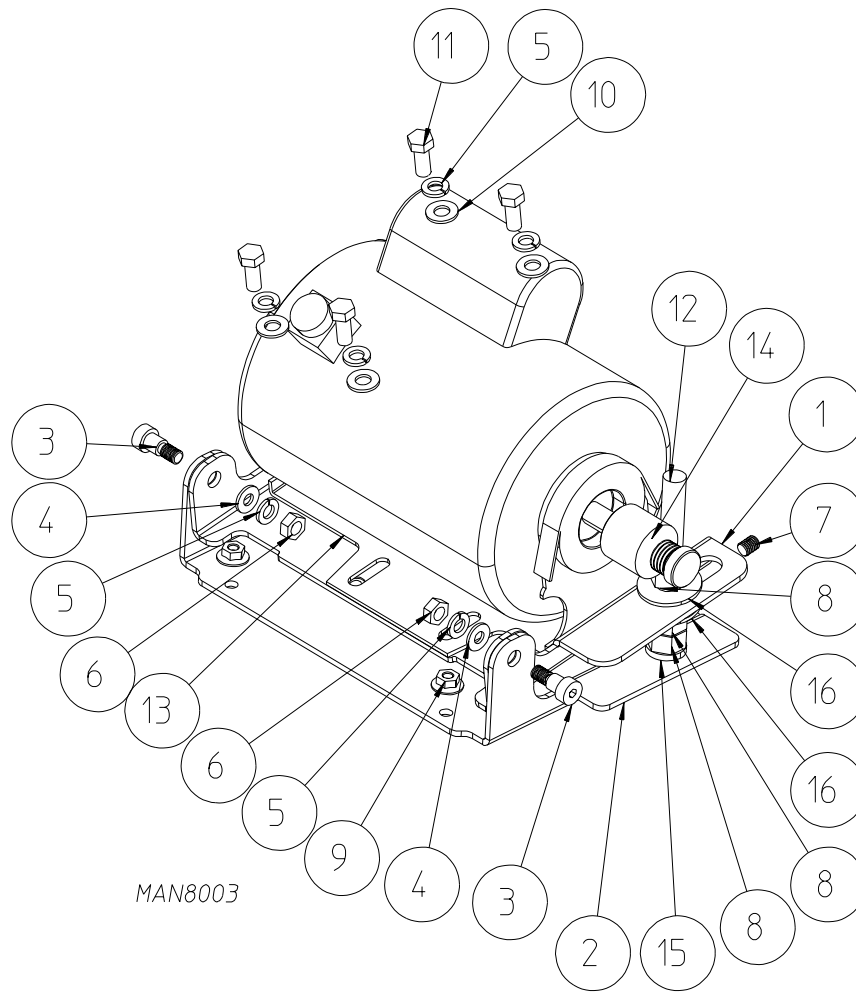
MAN7913

Illus. No.	Part No.	Qty.	Description
1	117617	—	3/8" x 5/16" Foam Gasket (sold by the foot)
2	830613	1	Lint Coop Assembly Complete (includes illus. nos. 1 through 8)
	830614	1	Lint Coop Only
3	122002	1	Lint Draw Switch
4	833522	1	Exhaust Sensor Probe Assembly
5	150301	4	#8-18 x 7/16" Phillips Pan Head Screw
6	130100	1	150° Automatic Reset Thermostat
7	117617	4	3/8" x 5/16" Foam Gasket
8	130098	1	190° Manual Reset Thermostat

Tumbler Assembly

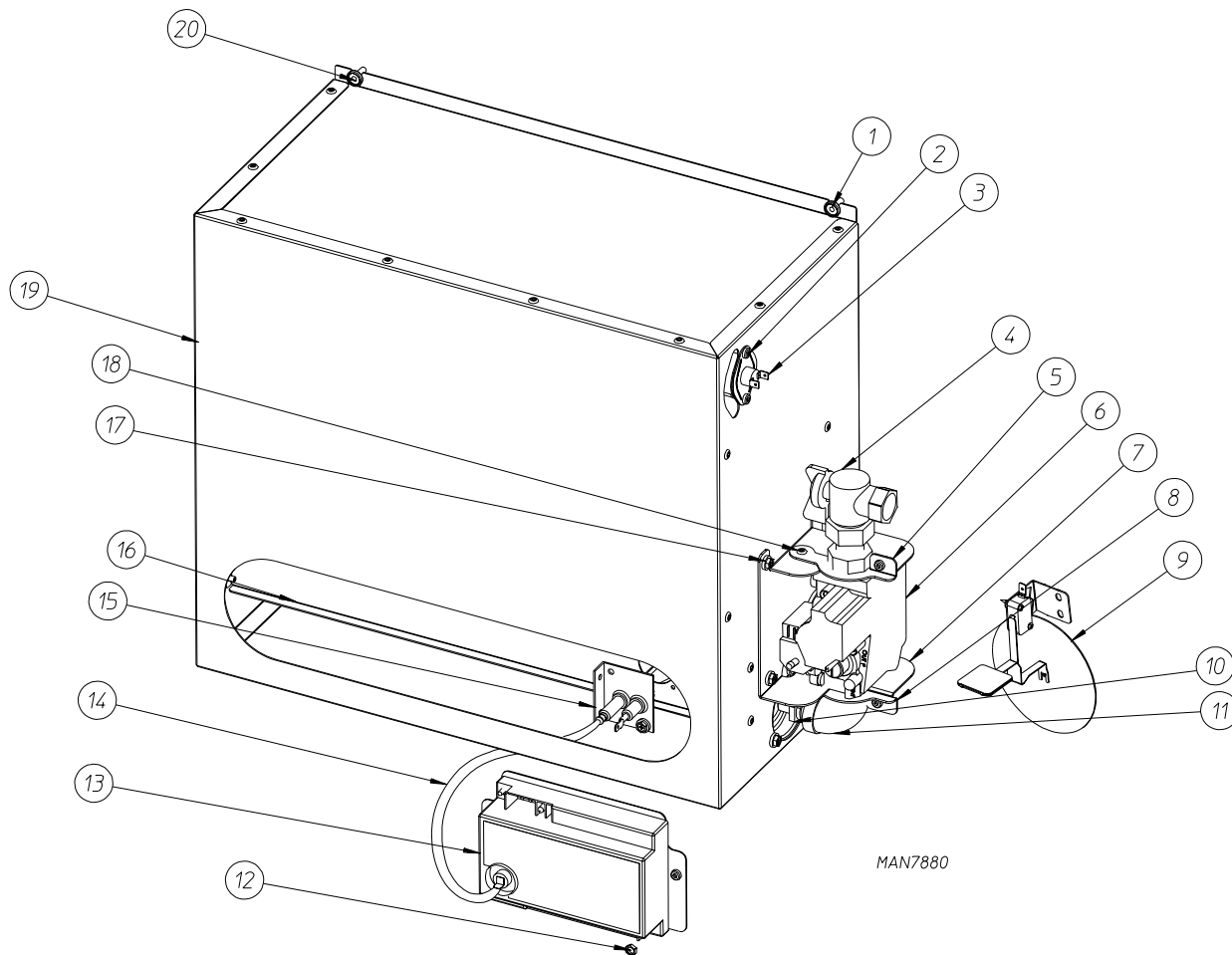


<u>Illus. No.</u>	<u>Part No.</u>	<u>Qty.</u>	<u>Description</u>
1	830645	1	Stainless Steel Tumbler Assembly (includes illus. nos. 1 through 19)
2	115906	1	Tumbler Front Felt
3	154211	36	5/32" Pop Rivet
4	846011	1	Tumbler Blearing Plate Assembly
5	100296	1	3 Bolt Self Aligning Flange Bearing
6	153002	3	5/16" Lock Washer
7	152004	3	5/16-18 Hex Nut
8	153012	4	#8 Internal Star Washer
9	150108	4	#8-32 x 1/2" Phillips Machine Screw
10	346119	1	Tumbler Shaft
11	346029	1	Stainless Steel Washer
12	184241	1	3/8-16 x 3/4" Button Head Socket Screw with Nylon Patch
13	115919	1	Tumbler Bearing Felt Ring
14	346069	1	Tumbler Shaft Backup Plate
15	153005	1	3/8" Lock Washer
16	150636	3	1/4-20 x 1/2" Button Head Socket Screw with Nylon Patch
17	185635	1	Bearing Cover
18	303360	3	Tumbler Ribs
19	115925	1	Rear Tumbler Felt
20	115924	1	Separator Felt
21	102407	1	Tumbler Drive Belt



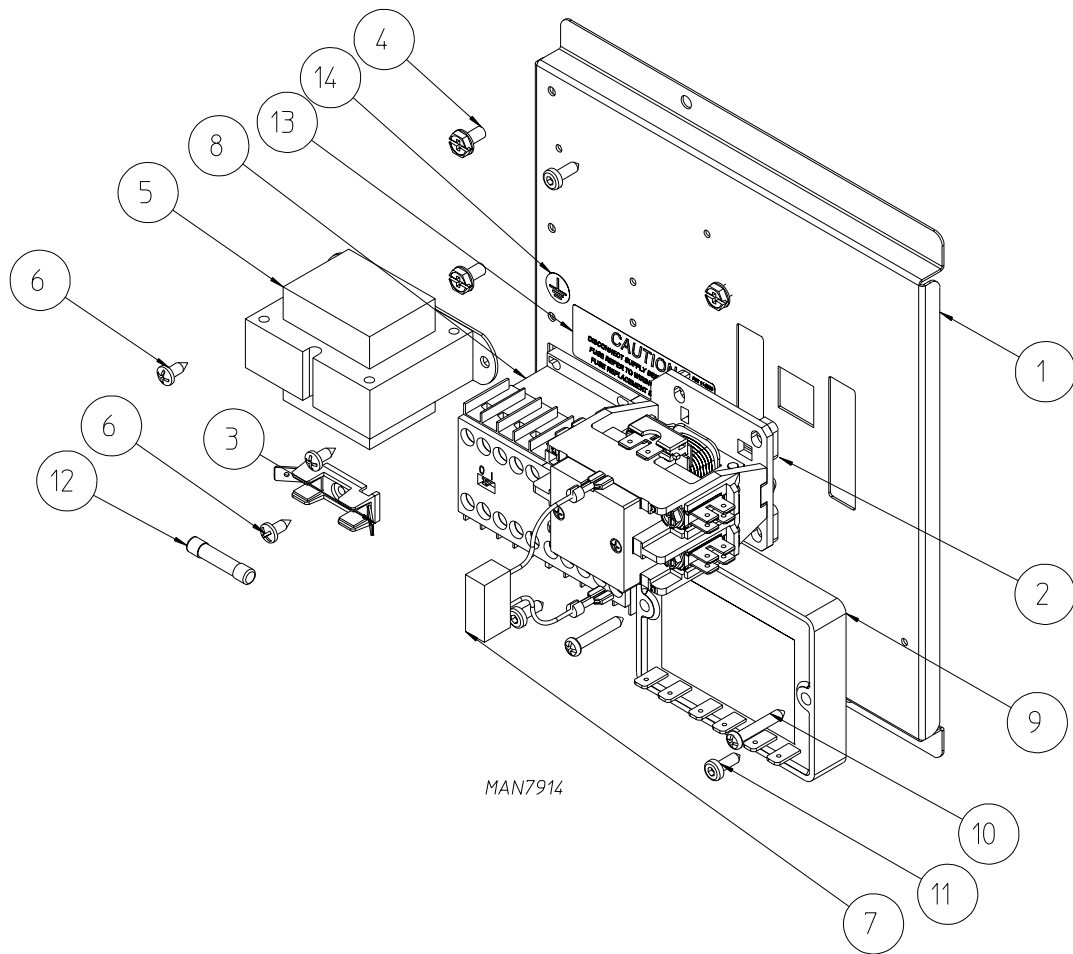
<u>Illus. No.</u>	<u>Part No.</u>	<u>Qty.</u>	<u>Description</u>
1	830615	1	Drive Motor Mount Assembly Complete for 60 Hz (includes illus. nos. 1 through 15)
	830675	1	Drive Motor Mount Assembly Complete for 50 Hz (includes illus. nos. 1 through 15)
	830616	1	Drive Motor Mount Plate
2	303322	1	Drive Motor Mount Base Plate
3	154266	2	3/8" x 3/8" Shoulder Bolt
4	153018	2	1/4" Flat Washer
5	153002	6	5/16" Lock Washer
6	152004	2	5/16-18 Hex Nut
7	154321	1	5/16-24 x 3/8" Allen Setscrew
8	152011	2	1/2" x 1-3/8" Hex Nut
9	152014	1	1/4-20 Washer Nut
10	153001	4	5/16" Flat Washer
11	150501	4	5/16-18 x 3/4" Machine Bolt
12	150609	1	1/2-13 x 4.5 Tap Bolt
13	884447	1	Drive Motor with Sheave 60 Hz
	887151	1	Drive Motor with Sheave 50 Hz
14	185059	1	Motor Sheave 60 Hz
	185067	1	Motor Sheave 50 Hz
15	153026	1	1/2" Lock Washer
16	153011	2	1-3/8" OD Flat Washer

Gas Burner Assembly



MAN7880

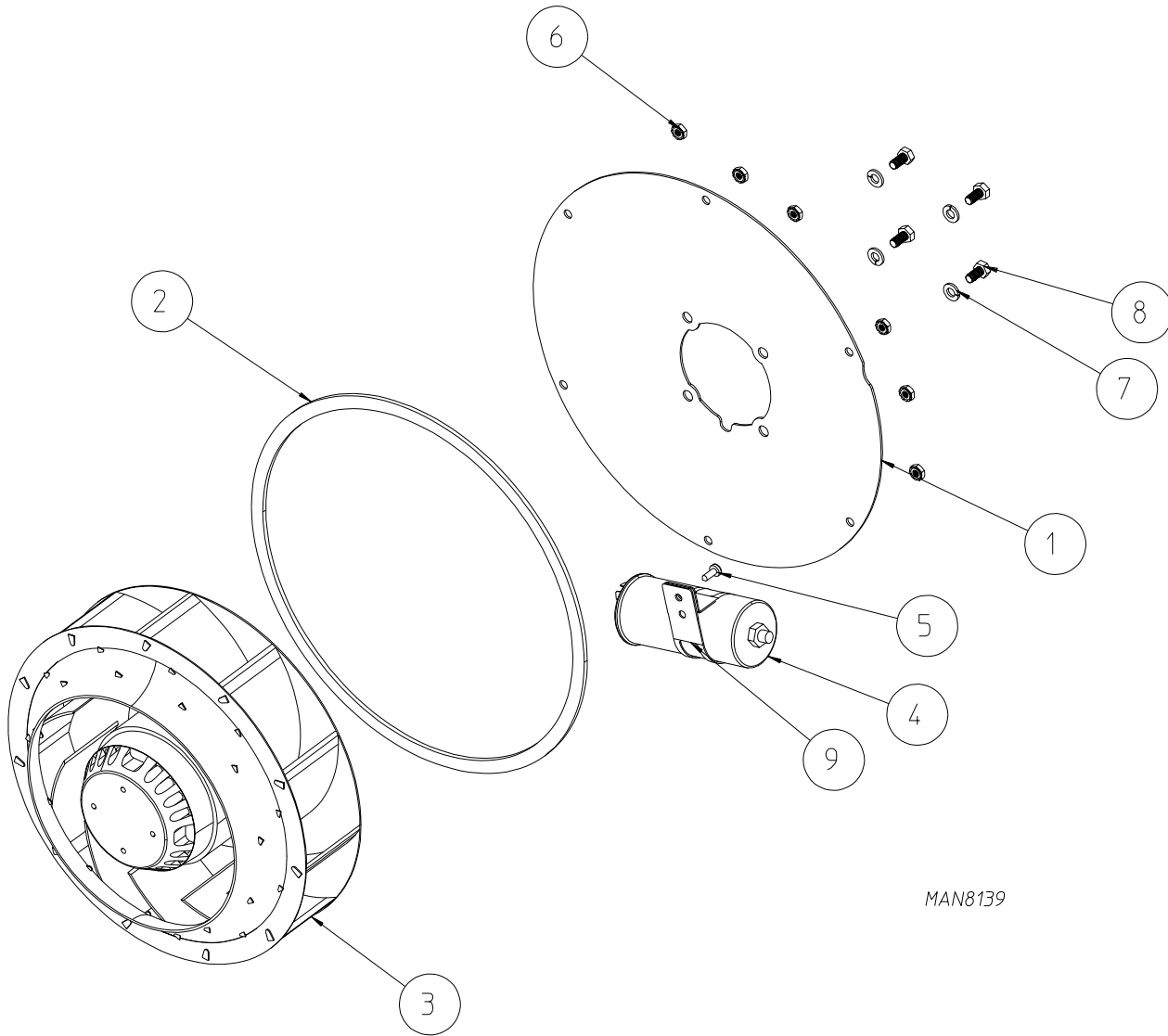
Illus. No.	Part No.	Qty.	Description
1	183008	2	0.060 Keyhole Button Yellow
2	150331	8	#8-18 x 1/2" Pan Head TORX® Screw
3	130104	1	215° Thermostat
4	141320	1	1/2" N.P.T. 90° Gas Union Full Port Shutoff
5	303341	1	Gas Valve Inlet Lock Bracket
6	128979	1	Redundant 24 Volt Gas Valve
7	303340	1	Gas Valve Bracket
8	303342	1	Gas Valve Outlet Lock Bracket
9	828238	1	Sail Switch Assembly 60 Hz Models
	830752	1	Sail Switch Assembly 50 Hz Models
10	140908	1	#20 Orifice for Natural Gas
	140909	1	#41 Orifice for Liquid Propane Gas
11	142506	1	1/2" x 1/2" Street Elbow Black Iron
12	153073	2	#8-32 Keps Nut
13	128937	1	DSI Module 3 Tries
14	884278	1	High Voltage Cable
15	884265	1	Ignitor with Flame Probe
16	141137	1	Burner Tube
17	150309	8	#10-16 x 1/2" Hex Head TEK Crimptite Screw
18	154200	2	5/32" Pop Rivet
19	830621	1	Gas Burner Box Assembly
20	154220	2	3/16" Pop Rivet
—	884439	1	Liquid Propane Gas Conversion Kit



MAN7914

<u>Illus. No.</u>	<u>Part No.</u>	<u>Qty.</u>	<u>Description</u>
1	830687	1	Reversing Electrical Panel Assembly Complete – 120 Volts (includes illus. nos. 1 through 14) (for models mfd. as of March 21, 2014)
	830632	1	Reversing Electrical Panel Assembly Complete – 120 Volts (includes illus. nos. 1 through 14) (for models mfd. prior to March 21, 2014)
	830690	1	Reversing Electrical Panel Assembly Complete – 208-240 Volts (includes illus. nos. 1 through 14) (for models mfd. as of March 21, 2014)
	830644	1	Reversing Electrical Panel Assembly Complete – 208-240 Volts (includes illus. nos. 1 through 14) (for models mfd. prior to March 21, 2014)
2	132498	1	24V 2 Pole DP Contactor
3	136008	—	Fuse Holder
4	120910	4	Ground Screw
5	141403	1	Transformer
6	150301	3	#8-18 x 7/16" Phillips Screw
7	824828	1	R.C. Network with Connector
8	132497	1	Reversing Contactor
9	132198	1	Reversing Timer
10	150332	2	8" x 1" Phillips Screw
11	150331	3	#8-18 x 1/2" TORX® Screw
12	136049	—	3/4-amp Slo-Blo Fuse
13	112075	1	1/2" Dia Ground Screw Label
14	114506	1	Disconnect Supply Fuse Label

Blower Motor Assembly



MAN8139

<u>Illus. No.</u>	<u>Part No.</u>	<u>Qty.</u>	<u>Description</u>
1	303335	1	Motorized Impeller Mount
2	117604	3	Neo Sponge Tape
3	887191	1	120V Motorized Impellor 50/60 Hz
	887031	1	208-240 Volt Motor Impellor
4	100683	1	20MFD Capacitor (for 120 volt models)
	100682	1	5MFD Capacitor (for 208-240 volt models)
5	150331	1	#8-18 x 1/2" Pan Head TORX® Screw
6	153076	6	#10-32 Keps Nut Zinc Plated
7	153007	4	1/4" Split Lock Washer Zinc
8	150691	4	6m x 12mm Hex Head Cap Screw
9	315497	1	Capacitor Bracket -1.5 & 1.75 Dia

<u>Part No.</u>	<u>Description</u>
303397	One-Piece Back Guard
125917	Coin Box Keyed Alike
830662	Coin Vault
103500	Leveling Legs, Adjustable
143536	6" Diameter 45 Degree Elbow

