



AD-333

Parts Manual

American Dryer Corporation
88 Currant Road
Fall River MA 02720-4781 USA
Telephone: +1 (508) 678-9000 / Fax: +1 (508) 678-9447
e-mail: techsupport@amdry.com

www.adclaundry.com

Retain This Manual In A Safe Place For Future Reference

This product embodies advanced concepts in engineering, design, and safety. If this product is properly maintained, it will provide many years of safe, efficient, and trouble free operation.

ONLY properly licensed technicians should service this equipment.

OBSERVE ALL SAFETY PRECAUTIONS displayed on the equipment or specified in the installation manual included with the dryer.

The following "FOR YOUR SAFETY" caution must be posted near the dryer in a prominent location.

FOR YOUR SAFETY

Do not store or use gasoline or other flammable vapors and liquids in the vicinity of this or any other appliance.

POUR VOTRE SÉCURITÉ

Ne pas entreposer ni utiliser d'essence ni d'autres vapeurs ou liquides inflammables à proximité de cet appareil ou de tout autre appareil.

We have tried to make this manual as complete as possible and hope you will find it useful. The manufacturer reserves the right to make changes from time to time, without notice or obligation, in prices, specifications, colors, and material, and to change or discontinue models.

Important

For your convenience, log the following information:

DATE OF PURCHASE _____ MODEL NO. **AD-333**

RESELLER'S NAME _____

Serial Number(s) _____

Replacement parts can be obtained from your reseller or the ADC factory. When ordering replacement parts from the factory, you can FAX your order to ADC at (508) 678-9447 or telephone your order directly to the ADC Parts Department at (508) 678-9000. Please specify the dryer model number and serial number in addition to the description and part number, so that your order is processed accurately and promptly.

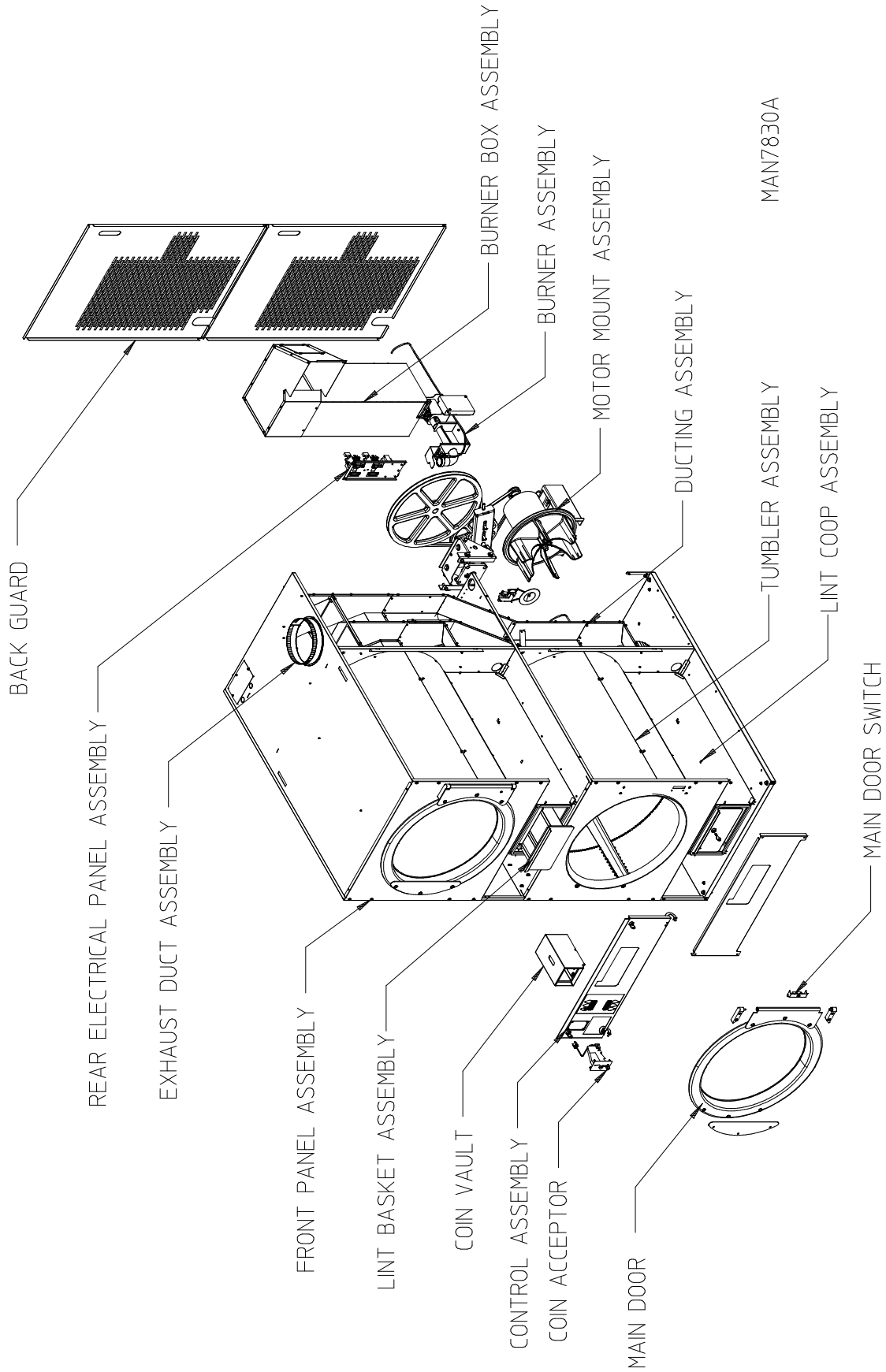
The illustrations on the following pages may not depict your particular dryer exactly. The illustrations are a composite of the various dryer models. Be sure to check the descriptions of the parts thoroughly before ordering.

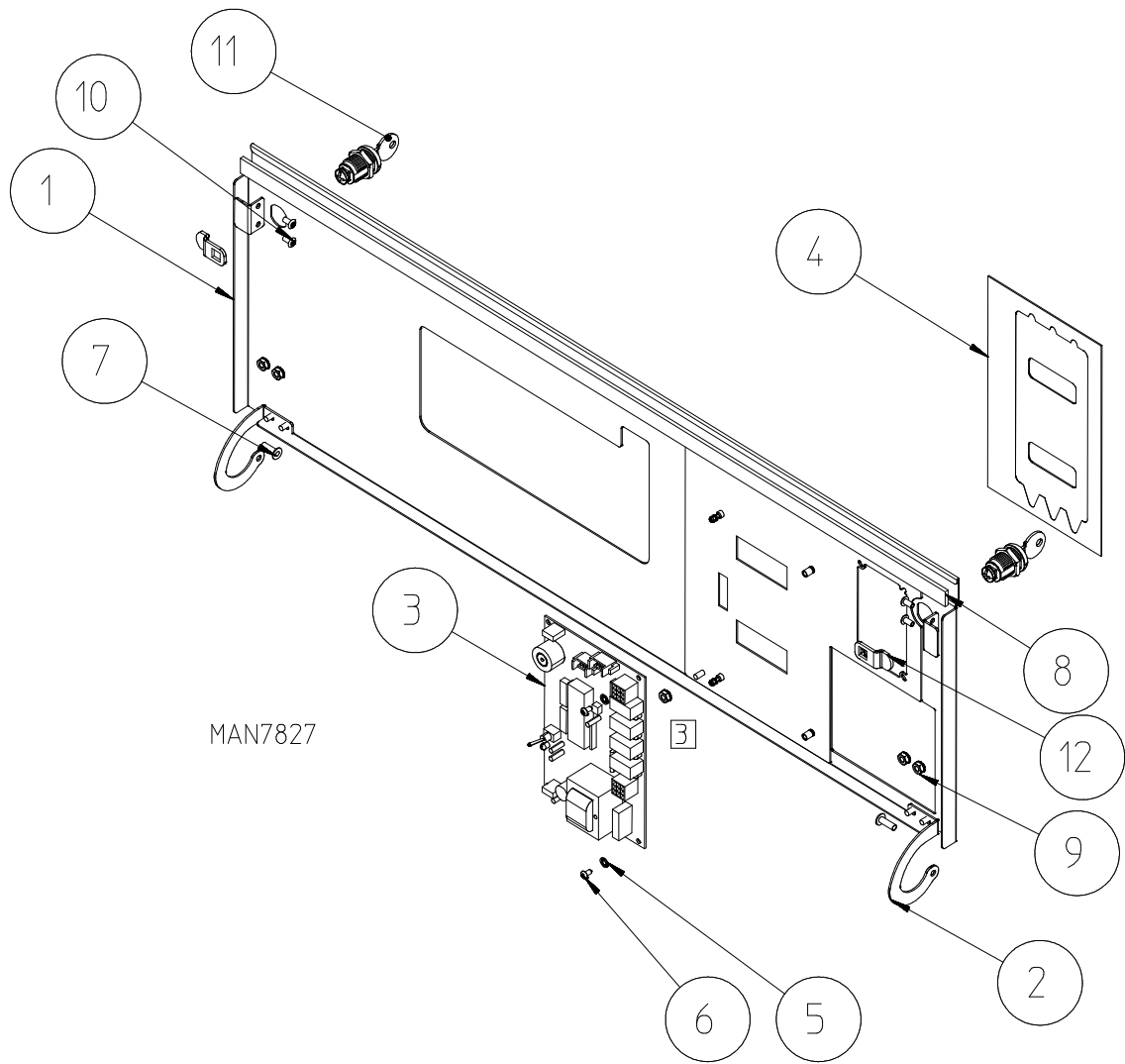
“IMPORTANT NOTE TO PURCHASER”

Information must be obtained from your local gas supplier on the instructions to be followed if the user smells gas. These instructions must be posted in a prominent location near the dryer.

NOTES _____



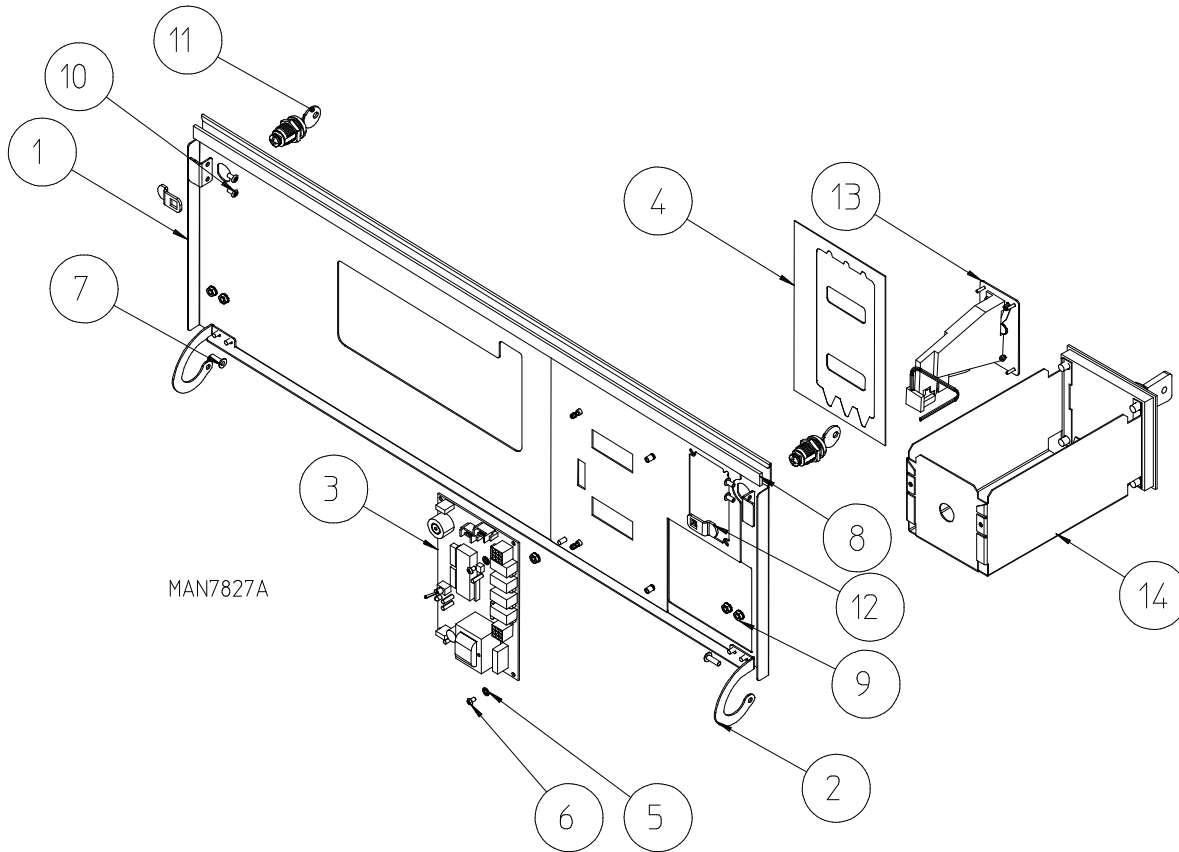




<u>Illus. No.</u>	<u>Part No.</u>	<u>Qty.</u>	<u>Description</u>
1	833552*	1	Phase 5 OPL Control Panel Assembly Less Acceptor (includes illus. nos. 1 through 12)
	833551*	1	Phase 5 OPL Control Door
2	333964	2	Control Door Hinge
3	137234	1	Phase 5 D.M.C. Computer Board
4	112559	1	Phase 5 D.M.C. Keypad
5	153010	2	#6 Internal Star Washer
6	150005	2	#6-32 x 1/4" Phillips Round Head Machine Screw
7	154220	2	3/16" Pop Rivet
8	117605	3	1/4" x 3/8" Noise Suppression Tape
9	153073	5	#8-32 Keps Nut
10	154200	4	5/32" Pop Rivet
11	160015	2	MK-100 Lock with Key
12	160052	2	1" Cam with 3/16" Offset

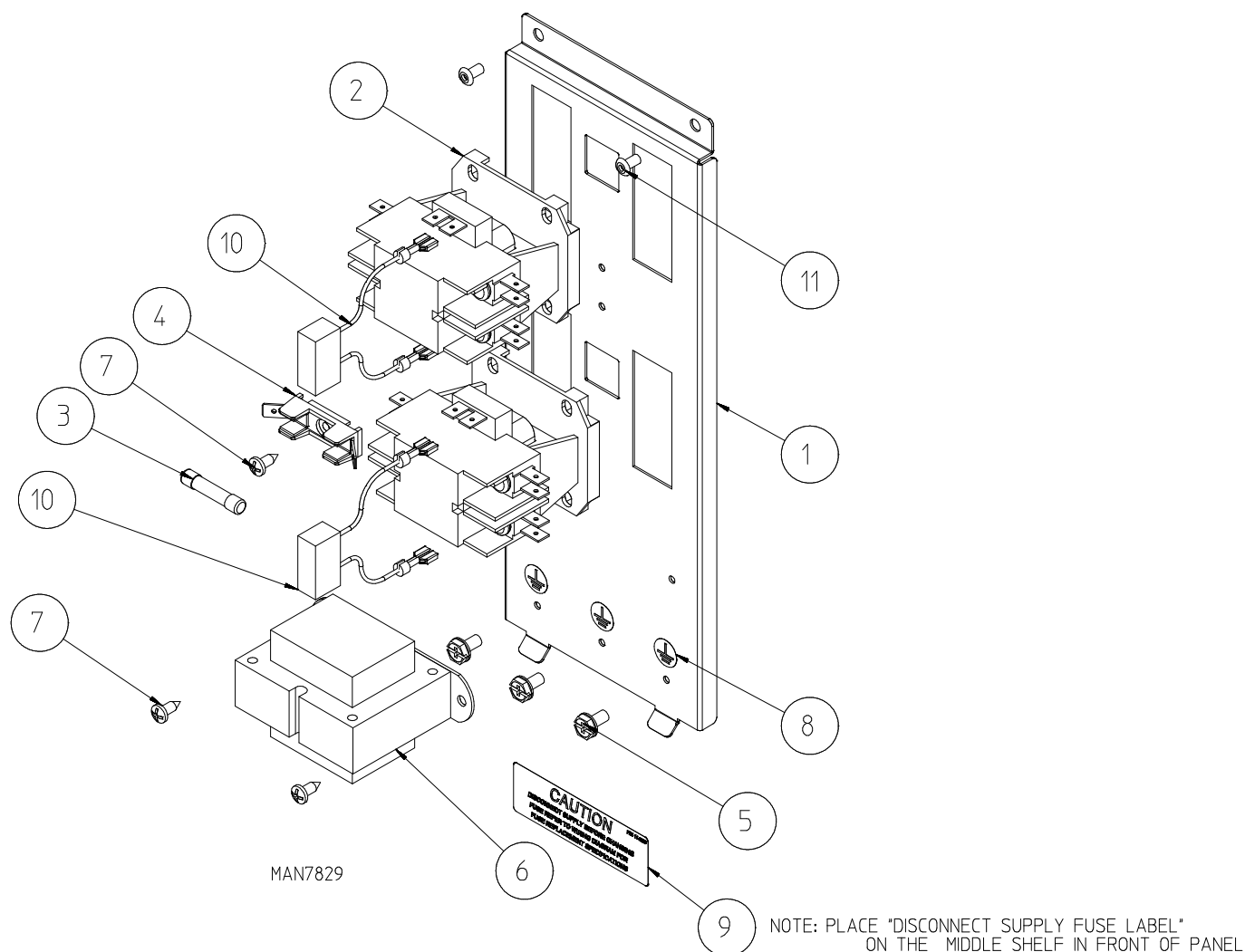
* Specify color.

Coin Control Door Assemblies



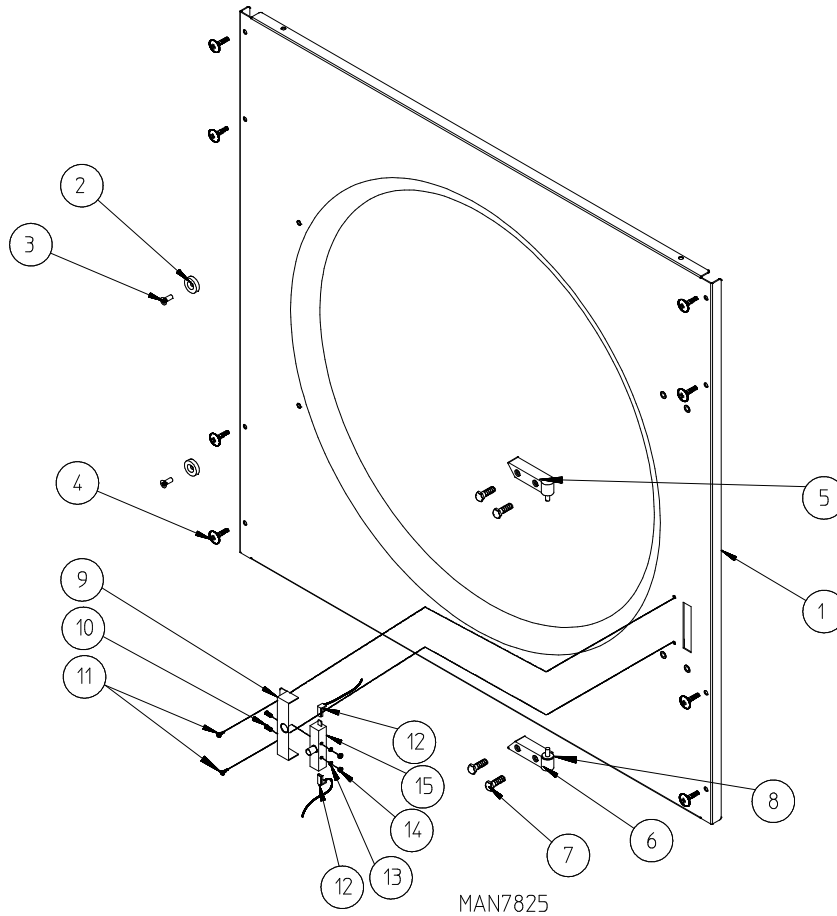
<u>Illus. No.</u>	<u>Part No.</u>	<u>Qty.</u>	<u>Description</u>
1	833543*	1	Phase 5 Coin Control Panel Assembly Less Acceptor (includes illus. nos. 1 through 12)
	833542*	1	Phase 5 Coin Control Door
2	333964	2	Control Door Hinge
3	137234	1	Phase 5 D.M.C. Computer Board
4	112559	1	Phase 5 D.M.C. Coin Keypad
5	153010	2	#6 Internal Star Washer
6	150005	2	#6-32 x 1/4" Phillips Round Head Machine Screw
7	154220	2	3/16" Pop Rivet
8	117605	3	1/4" x 3/8" Noise Suppression Tape
9	153073	5	#8-32 Keps Nut
10	154200	4	5/32" Pop Rivet
11	160015	2	MK-100 Lock with Key
12	160052	2	1" Cam with 3/16" Offset
13	854048	1	Coin Acceptor Assembly (U.S. 25¢)
	802286	1	Coin Acceptor Assembly (Canadian 25¢)
	883067	1	Optic Switch
14	125918	1	Coin Box

* Specify color.



<u>Illus. No.</u>	<u>Part No.</u>	<u>Qty.</u>	<u>Description</u>
1	833521	1	120V Electrical Panel Assembly (includes illus. nos. 1 through 11)
	333947	1	Electrical Component Panel Mount Only
2	132498	2	24V 2-Pole DB Contactor
3	136049	1	3/4 amp Slo-Blo Fuse
4	136008	1	Fuse Holder
5	120910	3	Green Ground Screw
6	802784	1	Phase 5 Transformer Assembly
7	150301	3	#8-18 x 7/16" Phillips Screw
8	112075	3	Ground Symbol Label
9	114506	1	Disconnect Fuse Label
10	824828	2	RC Network with Connectors
11	154200	2	5/32" Pop Rivet
	802753	1	Main Harness ... Not Illustrated
	802754	1	Power and Motor Harness ... Not Illustrated

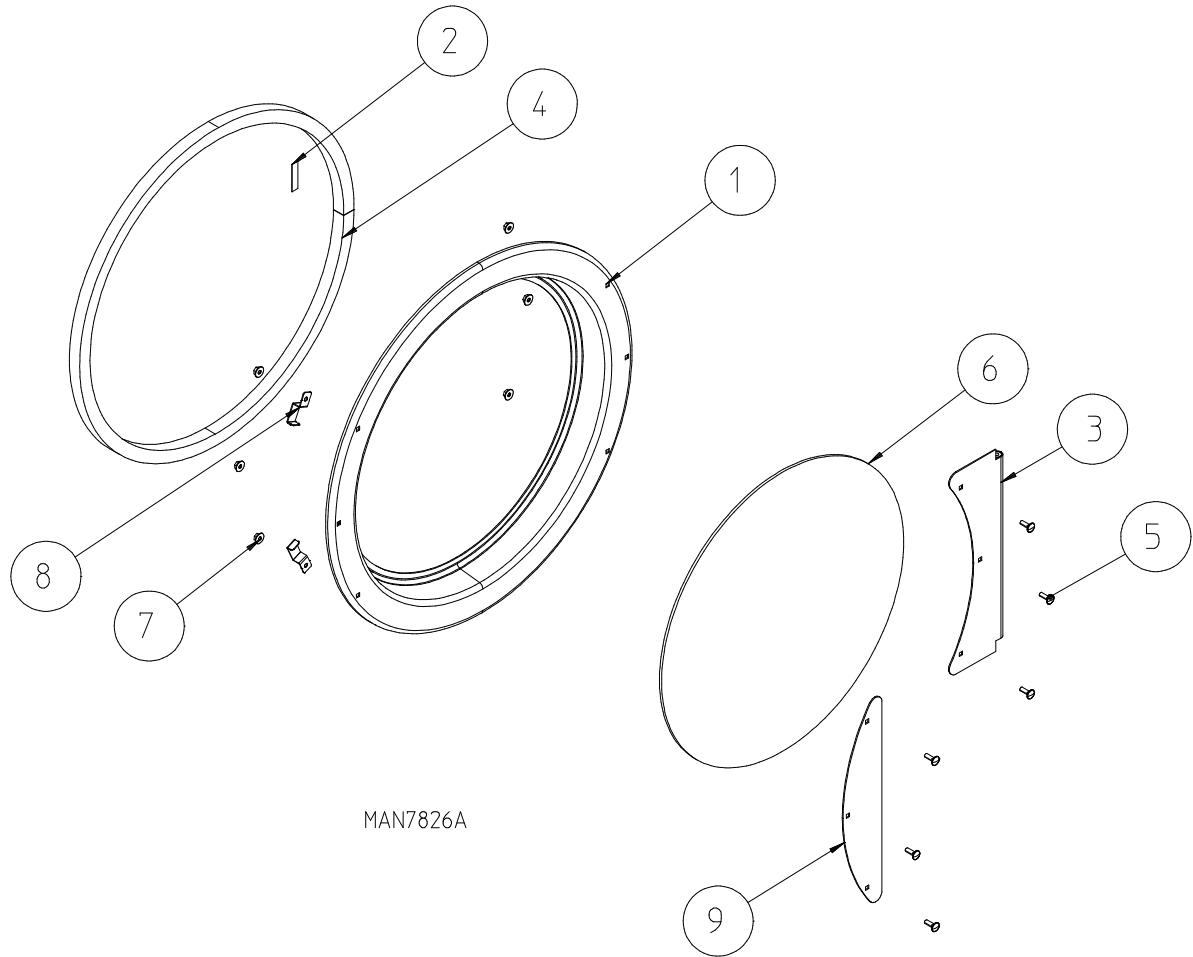
Cold Rolled Steel Door Front Panel



<u>Illus. No.</u>	<u>Part No.</u>	<u>Qty.</u>	<u>Description</u>
1	833515*	2	Front Panel Assembly (painted) (includes illus. nos. 1 through 3)
	822682	2	Front Panel Assembly (stainless steel) (includes illus. nos. 1 through 3)
	822677*	2	Front Panel (painted)
	822683	2	Front Panel (stainless steel)
2	102004	2	Round Door Magnet
3	152223	2	#10-32 x 1/2" Flat Undercut Head Machine Screw
4	150313	8	#10-16 x 1/2" TORX® and Button Screw
5	881152	1	Top Black Hinge Block
6	881151	1	Bottom Black Hinge Block
7	150445	2	1/4-20 x 3/4" Black Cap Head Setscrew
8	153051	1	1/4" Nylon Washer
9	353162	1	Main Door Switch Housing (painted)
	353209	1	Main Door Switch Housing (stainless steel)
10	150006	2	#6-32 x 7/8" Phillips Pan Head Machine Screw
11	150301	2	#8-18 x 7/16" Phillips Pan Head Tek Screw
12	122636	2	Flag Terminal
13	153010	2	#6 Star Washer
14	152013	2	#6-32 Hex Nut
15	137005	1	SDS Door Switch
	800453	1	Door Switch Assembly (painted) (includes illus. nos. 9 and 13 through 15)
	800474	1	Door Switch Assembly (stainless steel) (includes illus. nos. 9 and 13 through 15)

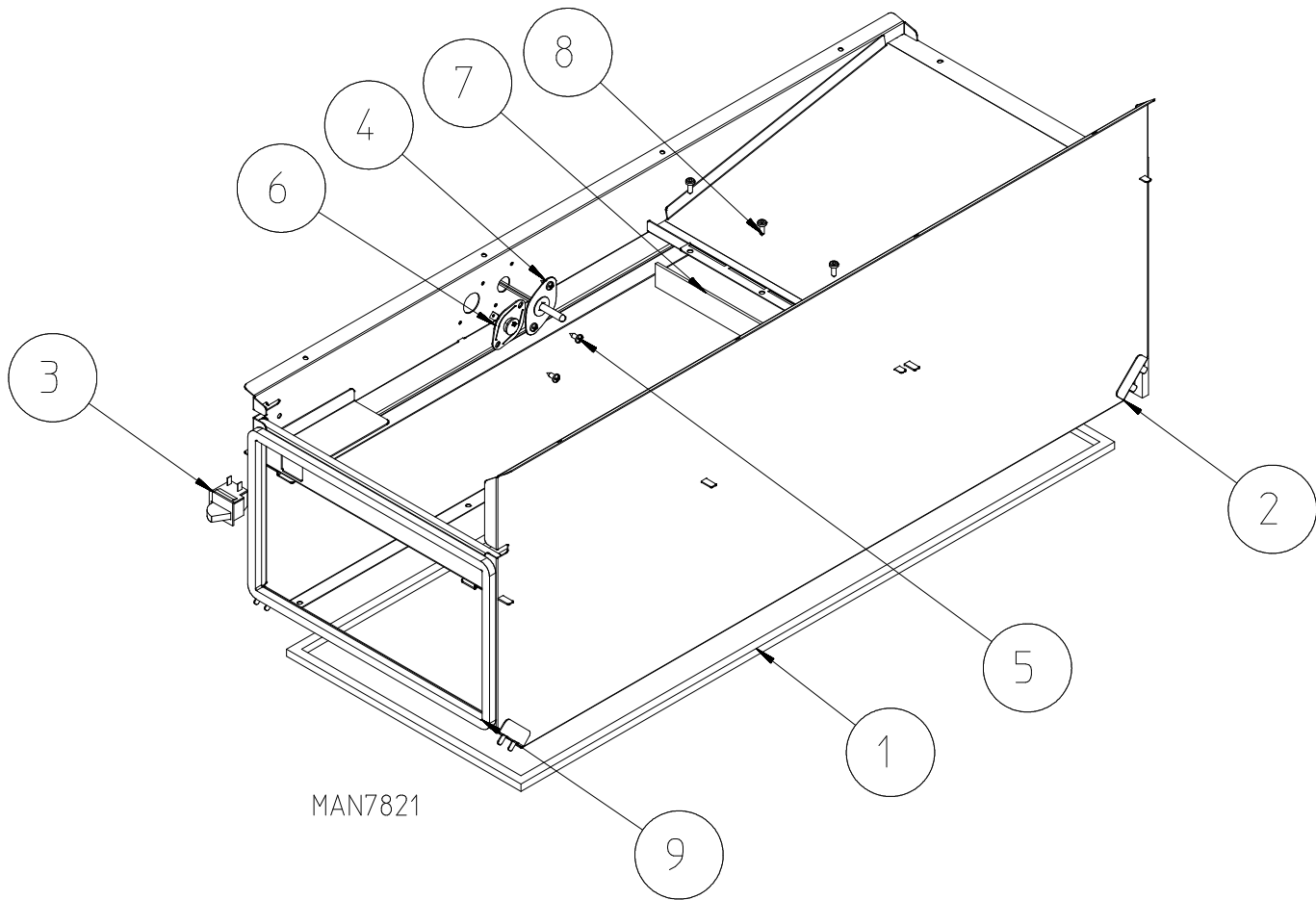
* Specify color.

Magnetic Main Door Cold Rolled Steel Assembly

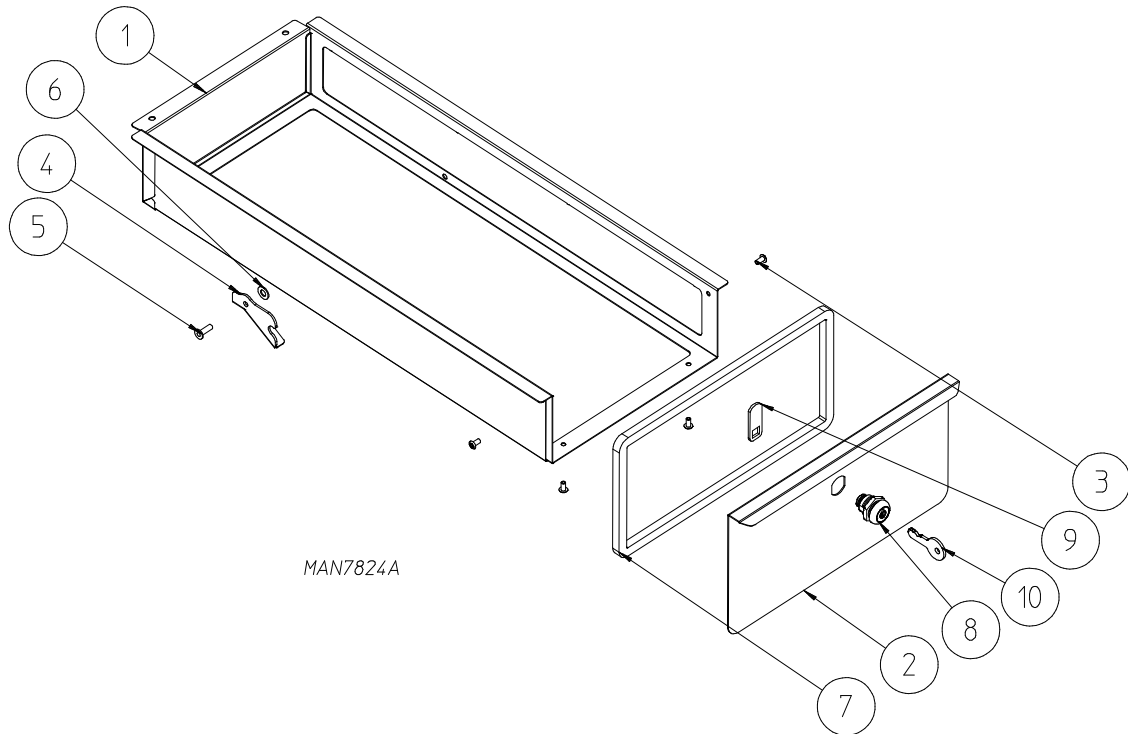


<u>Illus. No.</u>	<u>Part No.</u>	<u>Qty.</u>	<u>Description</u>
1	822661	1	Magnetic Black Main Door Assembly Complete (includes illus. nos. 1 through 9)
2	110006	1	1/2" Black Strapping Tape
3	851033	1	Cold Rolled Steel Main Door Hinge
4	102354	1	Door Gasket
5	150683	6	1/4-20 x 5/8" Carriage Bolt
6	102224	1	Main Door Glass without Notch
	401055	1	Black Silicone ... Not Illustrated
7	152014	6	1/4-20 Hex Flange Nut
8	319298	2	31-1/4" Main Door Magnet Bracket
9	170337	1	Cold Rolled Steel Main Door Handle

Lint Coop Compartment



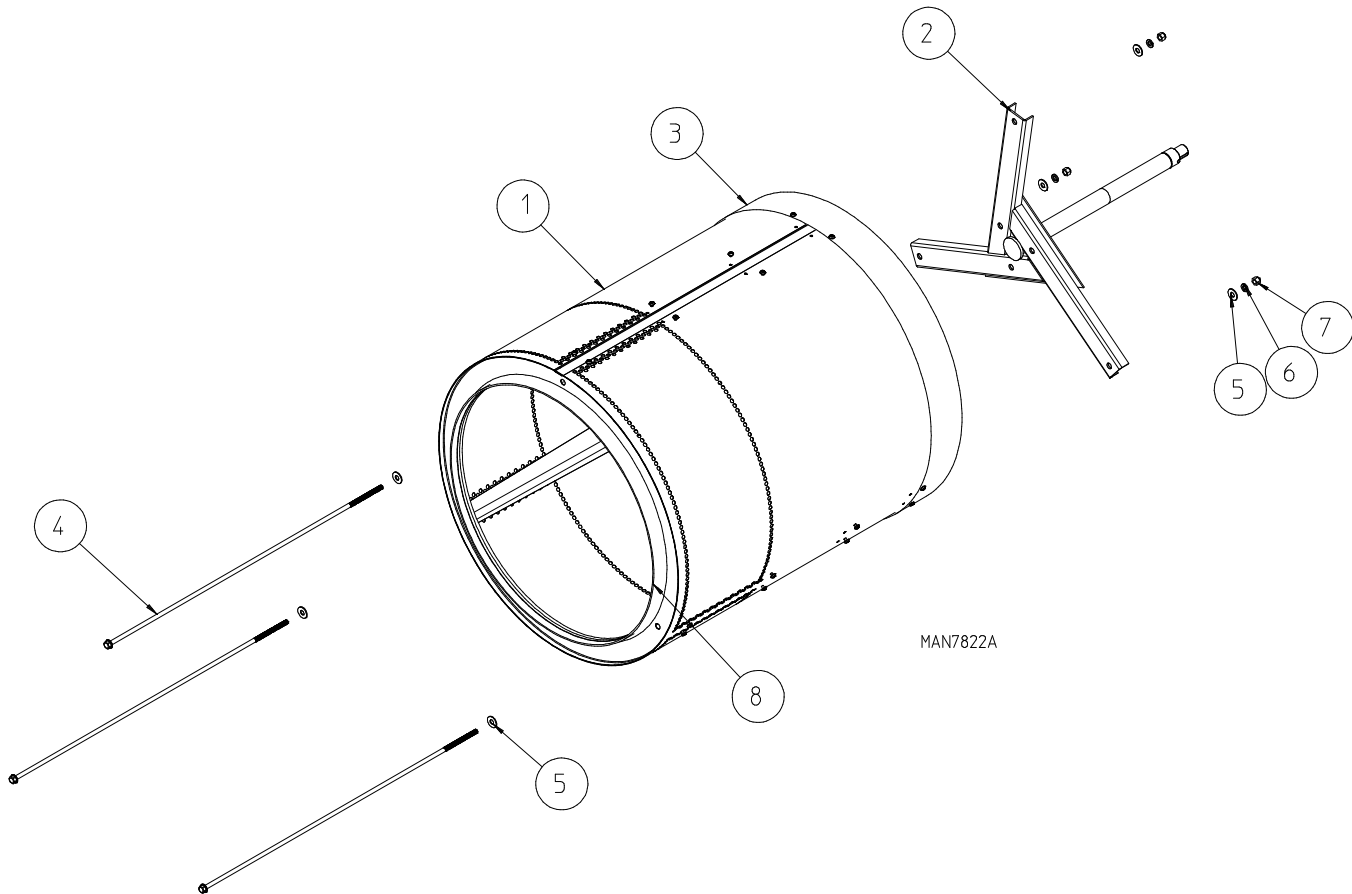
<u>Illus. No.</u>	<u>Part No.</u>	<u>Qty.</u>	<u>Description</u>
1	117617	10	3/8" x 5/16" Foam Gasket
2	833548	1	Lint Coop Assembly
	833545	1	Lint Coop
3	122002	1	Lint Draw Switch
4	833522	1	Exhaust Sensor Probe Assembly
5	150301	2	#8-18 x 7/16" Phillips Head Screw
6	130107	1	160° Automatic High Limit
7	116049	1	Lint Coop Felt
8	150331	3	TORX® Screw
9	117617	4	Foam Gasket



<u>Illus. No.</u>	<u>Part No.</u>	<u>Qty.</u>	<u>Description</u>
1	833510*	1	Lint Drawer Assembly (includes illus. nos. 1 through 7)
	833525*	1	Locking Lint Drawer Assembly (includes illus. nos. 1 through 10)
	833511*	1	Lint Drawer Body
2	833512*	1	Lint Drawer Handle (non locking)
	833524	1	Lint Drawer Handle (locking)
3	154211	4	5/32" Buttonhead Rivet
4	345048	1	Lint Drawer Stop
5	154220	1	3/16" Pop Rivet
6	153022	1	#10 Flat Washer
7	117617	3	3/8" x 5/16" Sponge Tape
8	883798	1	Lock Assembly (includes illus. nos. 8 through 10)
9	160016	1	Lock Cam
10	160103	1	AD-100 Key

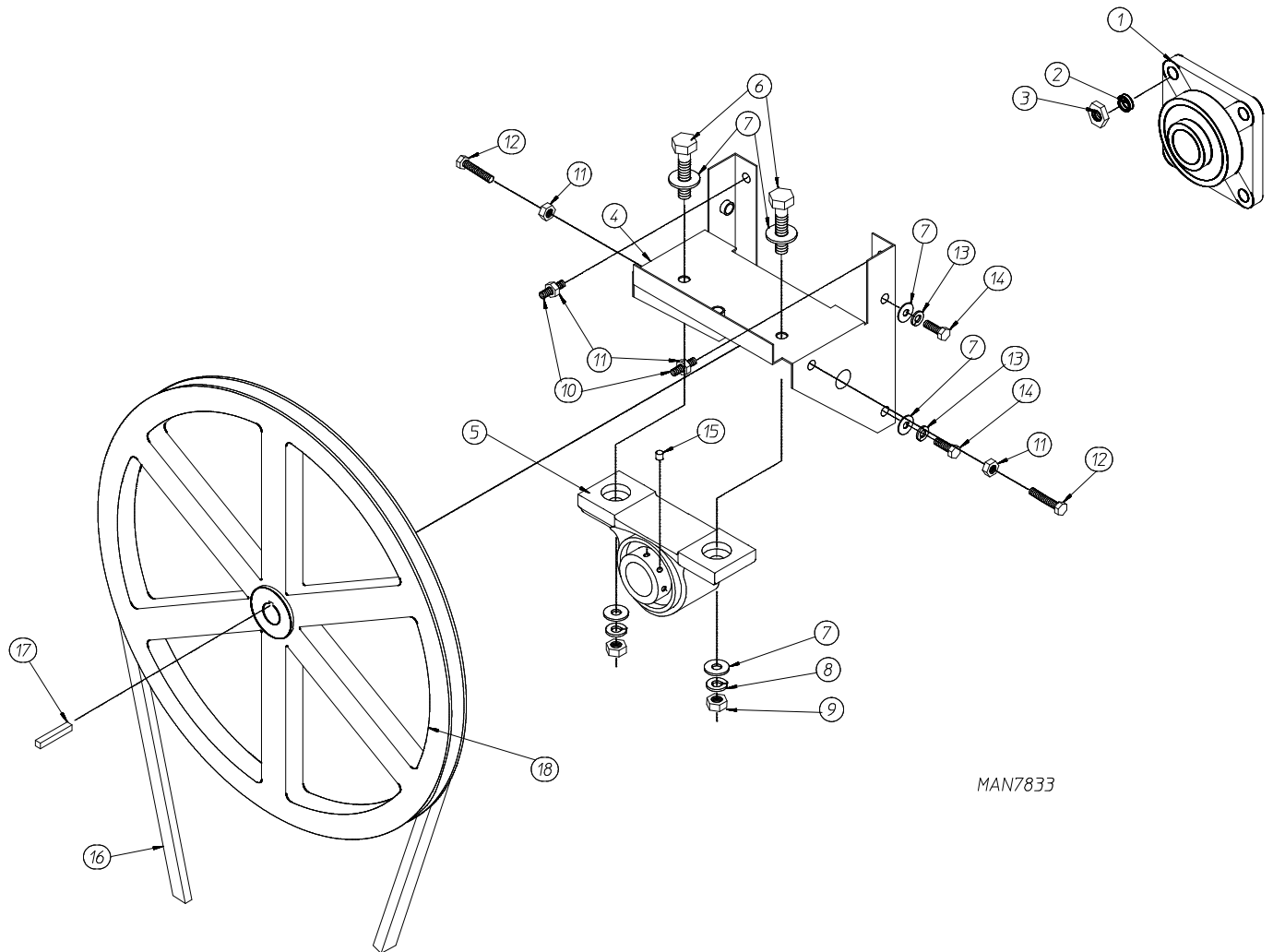
* Specify color.

Tumbler Support Assemblies



<u>Illus. No.</u>	<u>Part No.</u>	<u>Qty.</u>	<u>Description</u>
1	833549	1	Tumbler and Support Assembly Complete with Felt Collar (includes illus. nos. 1 through 8)
	801319	1	Tumbler Only without Felt Collar
2	850064	1	Tumbler Support Only
3	115999	1	Tumbler Felt Collar
4	100915	3	3/8-16 x 31-1/8" Tie Rod
5	153004	6	3/8" Flat Washer
6	153005	3	3/8" Lock Washer
7	152027	3	3/8-16 Hex Nylon Insert Lock Nut
8	115992	1	Inner Ring Tumbler Felt Collar

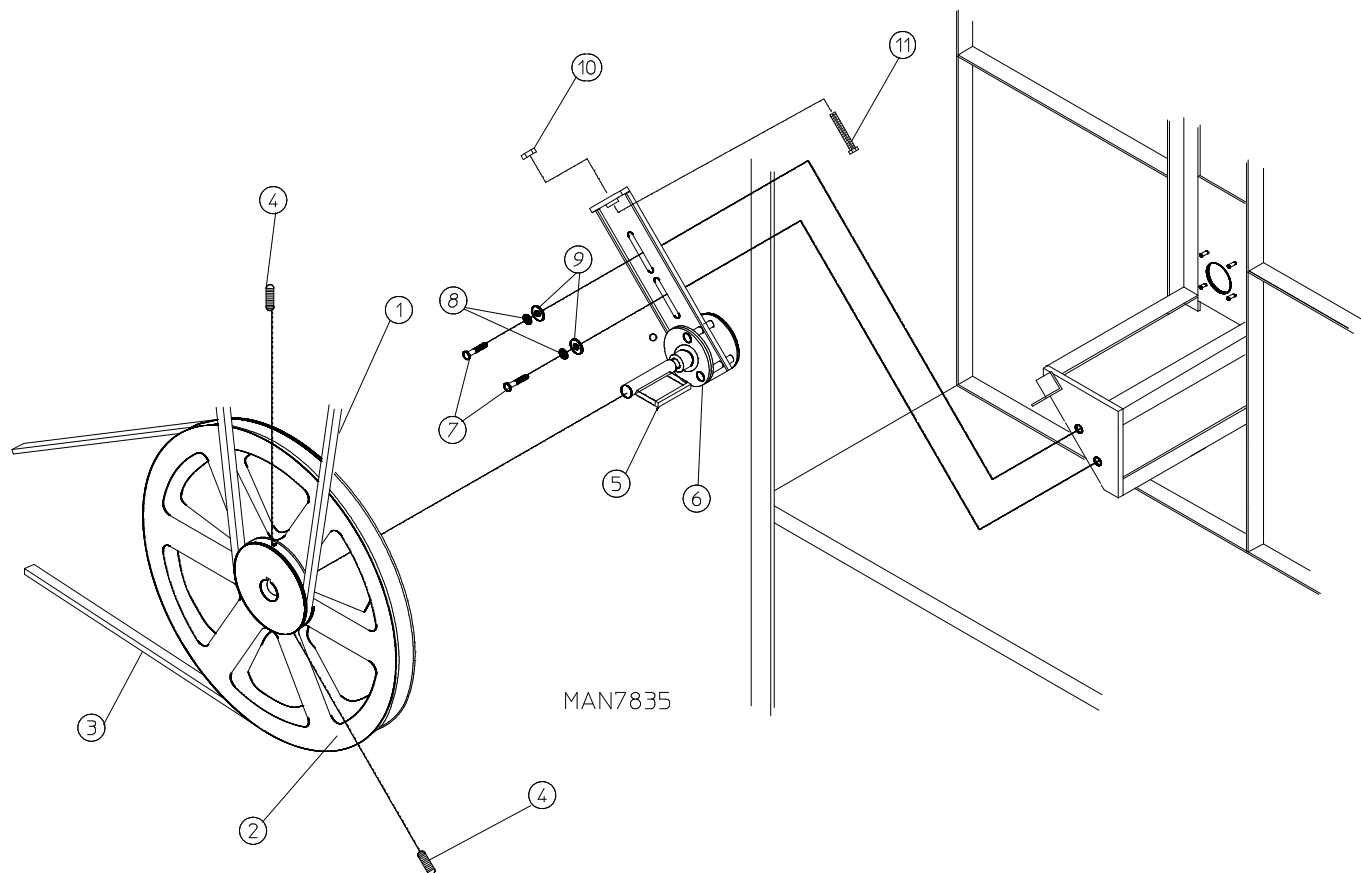
Tumbler Bearing Assembly



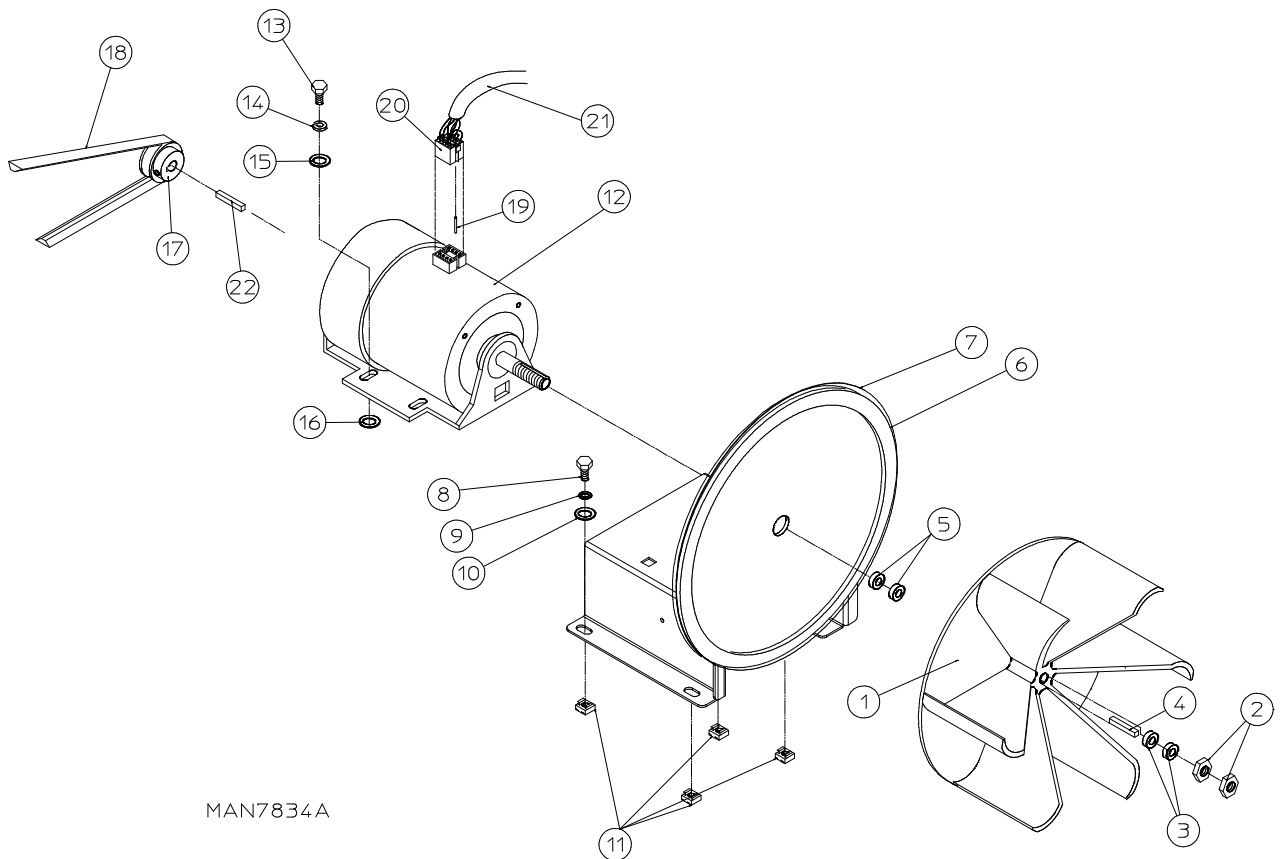
MAN7833

<u>Illus. No.</u>	<u>Part No.</u>	<u>Qty.</u>	<u>Description</u>
1	880203	1	1-3/8" Flange Bearing
2	153005	4	3/8" Lock Washer
3	152005	4	3/8-16 Hex Nut
4	800981	1	Pillow Block Bearing Assembly Complete (includes illus. nos. 4 through 15)
	800980	1	Pillow Block Bearing Support Only
5	880202	1	1-3/8" Pillow Block Bearing (includes illus. nos. 5, 10, and 15)
6	150601	2	3/8-16 x 2" Hex Bolt
7	153004	8	3/8" Flat Washer
8	153005	2	3/8" Lock Washer
9	152005	2	3/8-16 Hex Nut
10	154321	2	5/16-24 x 3/8" Black Setscrew
11	152004	4	5/16-18 Hex Nut
12	150621	2	5/16-18 x 1-1/2" Tap Bolt
13	153002	4	5/16" Lock Washer
14	150501	4	5/16-18 x 3/4" Tap Bolt
15	150610	2	5/16-18 x 1-1/2" Allen Setscrew
16	100100	1	5L-660 V-Belt (to idler assembly)
17	100713	1	1/4" x 1/4" x 7/8" Key
18	884042	1	18" Pulley

Idler Bearing Assembly



<u>Illus. No.</u>	<u>Part No.</u>	<u>Qty.</u>	<u>Description</u>
1	100100	1	50660R V-Belt
2	101129	1	9" x 2-1/2" Pulley
3	100113	1	4L-400 V-Belt (To Motor Pulley) for 60 Hz Models Only
4	154301	2	5/16-18 x 1" Allen Setscrew
5	100705	1	3/16" x 3/16" x 1-3/8" Key
6	882777	1	Idler Bearing Assembly Complete (includes illus. nos. 5 through 11)
7	150617	2	3/8-16 x 1" Hex Head Machine Bolt
8	153005	2	3/8" Lock Washer
9	153004	2	3/8" Flat Washer
10	152004	1	5/16-18 Hex Nut
11	150509	1	5/16-18 x 3" Hex Head Machine Bolt

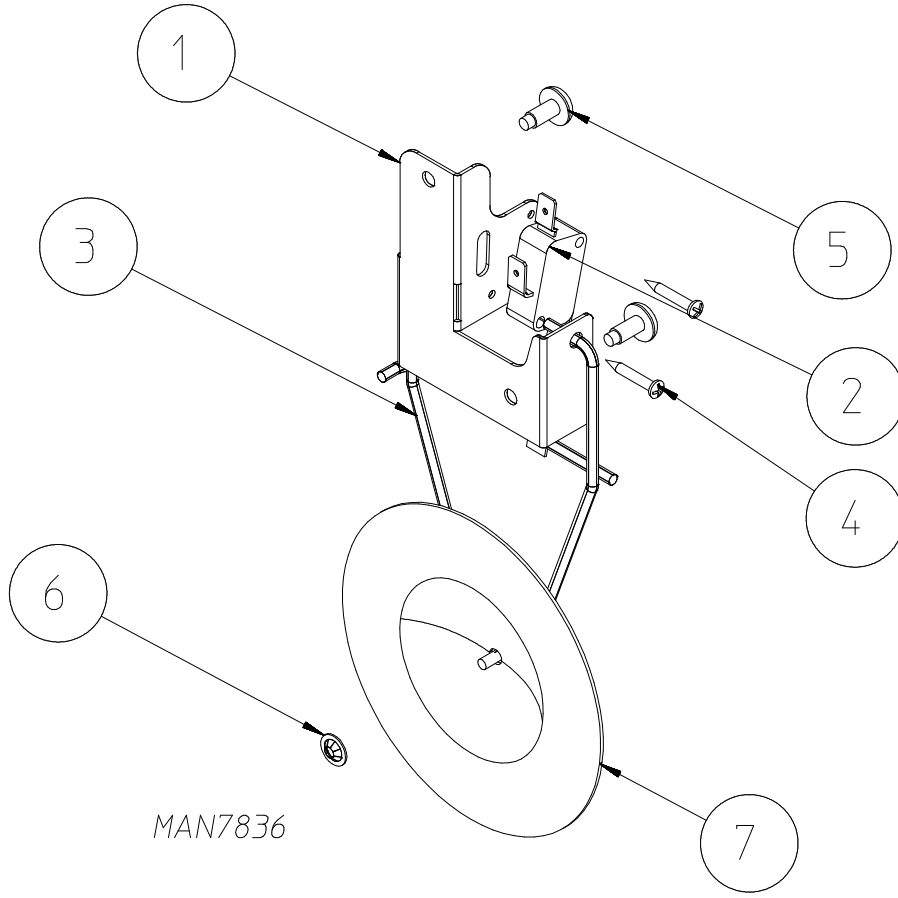


MAN7834A

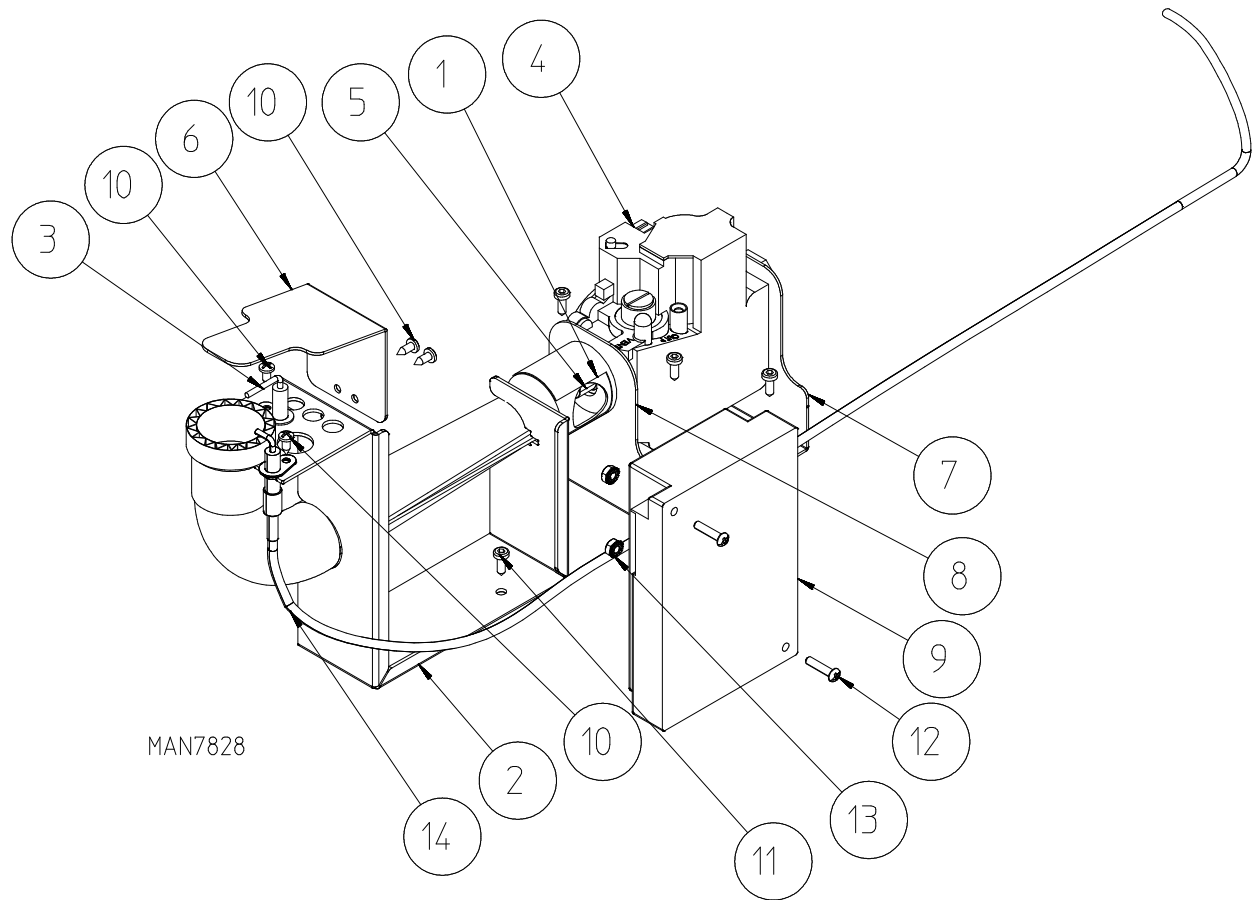
Illus. No.	Part No.	Qty.	Description
1	100604	1	12-1/2" Impellor with 1/2" Bore
2	152006	2	1/2-20 Left-Hand Jam Nut
3	153050	*	1/2" S.A.E. Flat Washer
4	100723	1	1/8" x 1/8" x 1-3/8" Key
5	153050	*	1/2" S.A.E. Flat Washer
6	117617	4	1/8" x 3/8" Sponge Tape (sold by the foot)
7	833519	1	Motor Mount Only
	833537	1	1/2 hp 115-230v 1ø 60 Hz Motor Mount Assembly Complete with Plug Motor (includes illus. nos. 1 through 7 and 11 through 17)
8	150501	4	5/16-18 x 3/4" Hex Head Machine Bolt
9	153002	4	5/16" Lock Washer
10	153001	4	5/16" Flat Washer
11	154000	4	5/16-18 Tinnerman Nut
12	181049	1	1/2 hp 100-230v 1ø 50/60 Motor with Plug
13	150501	4	5/16-18 x 3/4" Hex Head Machine Bolt
14	153002	4	5/16" Lock Washer
15	153001	4	5/16" Flat Washer
16	153001	*	5/16" Flat Washer
17	101131	1	1/2" x 2-1/4" Motor Pulley (for use on 1ø, 60 Hz models Only)
18	100113	1	4L-400 V-Belt (to idler) for 60 Hz Models Only
19	122701	8	Socket Terminal
20	137030	1	8-Pin Housing
	122801	1	Pin / Socket Extraction Tool ... Not Illustrated
21	826316	1	120v 1ø Motor Harness with Plug
22	100723	1	1/8" x 1/8" x 1-3/8" Key (for use on 1ø models Only)

* As required.

Sail Switch Assembly



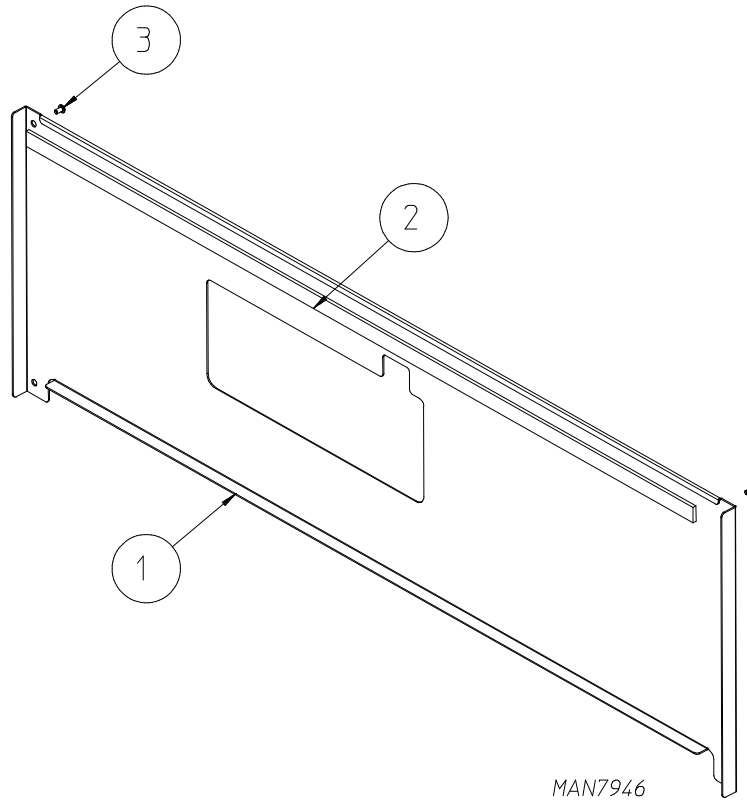
<u>Illus. No.</u>	<u>Part No.</u>	<u>Qty.</u>	<u>Description</u>
1	833520	1	Sail Switch Assembly Complete (includes illus. nos. 1 through 7)
	333958	1	Sail Switch Bracket Only
2	122200	1	Sail Switch
3	105500	1	Sail Switch Rod Assembly
4	150303	2	#4 x 3/4" Phillips Machine Screw
5	150313	2	#10-16 x 1/2" TORX® Screw
6	154002	1	1/8" Push-On Fastener
7	319206	1	Sail Switch Damper



<u>Illus. No.</u>	<u>Part No.</u>	<u>Qty.</u>	<u>Description</u>
1	141130	1	Up-Shot Burner Tube
2	333961	1	Up-Shot Burner Tube Bracket
3	128918	1	Flame Sensor
4	833538*	1	Natural Gas Valve Burner Assembly (includes illus. nos. 1 through 14)
	128979*	1	Natural Gas Valve
	884539	1	Natural Gas Orifice with Sleeve For models mfd. before September 30, 2014
	884540	1	Liquid Propane Gas Orifice with Sleeve For models mfd. before September 30, 2014
5	140908*	1	#20 Burner Orifice (natural gas) For models mfd. after September 30, 2014
	140909*	1	#41 Burner Orifice (liquid propane) For models mfd. after September 30, 2014
	884399*	1	Natural Gas to Liquid Propane Conversion Kit
6	312652	1	Flame Spreader
7	333959	1	Gas Valve Pipe Bracket
8	333960	1	Gas Valve Injector Bracket
9	887133	1	Fenwal Direct Spark Ignition Module with 3 Tries
10	150301	4	#8-18 x 7/16" Phillips Screw
11	150331	6	#8-18 x 1/2" TORX® Screw
12	150103	2	#8-32 x 3/4" Phillips Screw
13	153073	2	#8-32 Keps Nut
14	128902	1	Ignitor with 36" Noise Suppression Cable

* Consult factory for elevations over 2,000 feet.

Toe Panel



<u>Illus. No.</u>	<u>Part No.</u>	<u>Qty.</u>	<u>Description</u>
1	884462*	1	Toe Panel Assembly (includes illus. nos. 1 and 2)
	884525	1	Toe Panel Assembly (stainless steel) (includes illus. nos. 1 and 2)
2	117605	3	1/4" x 3/8" Neosponge Tape
3	150320	4	#10-16 x 3/4" TORX® PLUS BTN Type 1 Blk

* Specify color.

