



AD-360X2RD

Parts Manual

Phase 7

American Dryer Corporation
88 Currant Road
Fall River MA 02720-4781 USA
Telephone: +1 (508) 678-9000 / Fax: +1 (508) 678-9447
e-mail: techsupport@amdry.com

www.adclaundry.com

Retain This Manual In A Safe Place For Future Reference

American Dryer Corporation products embody advanced concepts in engineering, design, and safety. If this product is properly maintained, it will provide many years of safe, efficient, and trouble free operation.

ONLY qualified technicians should service this equipment.

OBSERVE ALL SAFETY PRECAUTIONS displayed on the equipment or specified in the installation manual included with the dryer.

The following “**FOR YOUR SAFETY**” caution must be posted near the dryer in a prominent location.

FOR YOUR SAFETY

Do not store or use gasoline or other flammable vapors and liquids in the vicinity of this or any other appliance.

POUR VOTRE SÉCURITÉ

Ne pas entreposer ni utiliser d'essence ni d'autres vapeurs ou liquides inflammables à proximité de cet appareil ou de tout autre appareil.

We have tried to make this manual as complete as possible and hope you will find it useful. ADC reserves the right to make changes from time to time, without notice or obligation, in prices, specifications, colors, and material, and to change or discontinue models.

Important

For your convenience, log the following information:

DATE OF PURCHASE _____ MODEL NO. **AD-360X2RD**

RESELLER'S NAME _____

Serial Number(s) _____

Replacement parts can be obtained from your reseller or the ADC factory. When ordering replacement parts from the factory, you can FAX your order to ADC at (508) 678-9447 or telephone your order directly to the ADC Parts Department at (508) 678-9000. Please specify the dryer model number and serial number in addition to the description and part number, so that your order is processed accurately and promptly.

The illustrations on the following pages may not depict your particular dryer exactly. The illustrations are a composite of the various dryer models. Be sure to check the descriptions of the parts thoroughly before ordering.

“IMPORTANT NOTE TO PURCHASER”

Information must be obtained from your local gas supplier on the instructions to be followed if the user smells gas. These instructions must be posted in a prominent location near the dryer.

Parts Reference Diagram

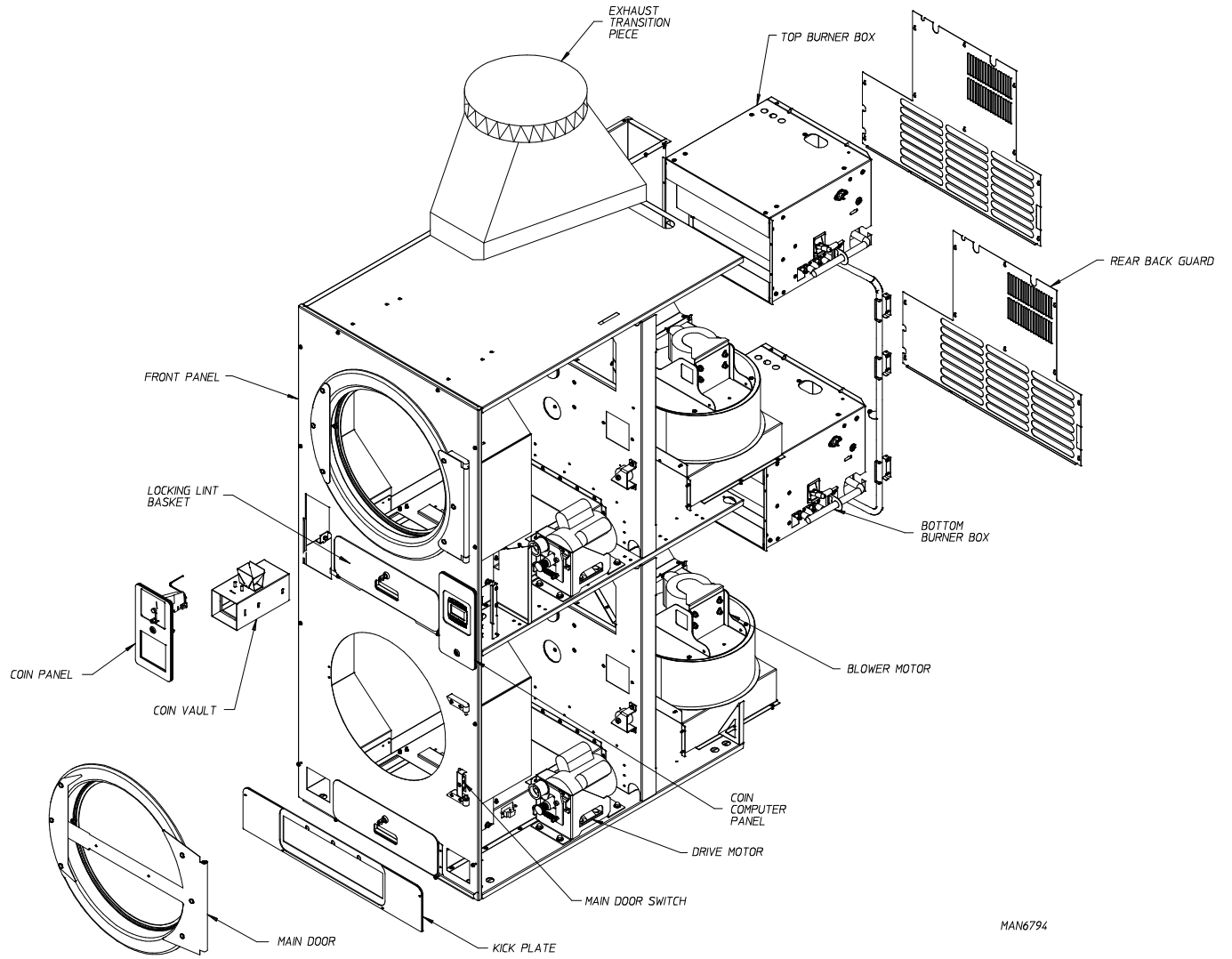
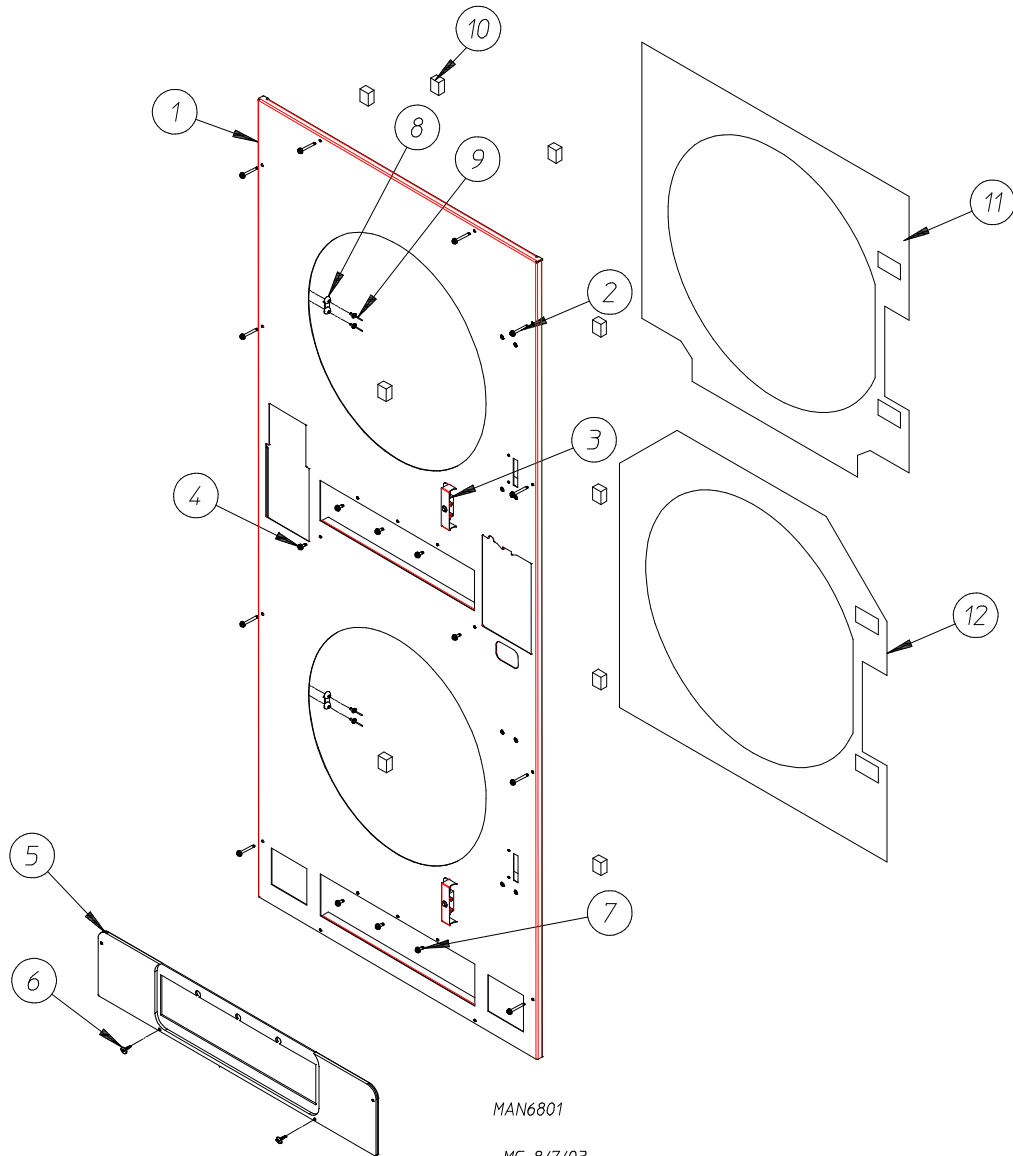


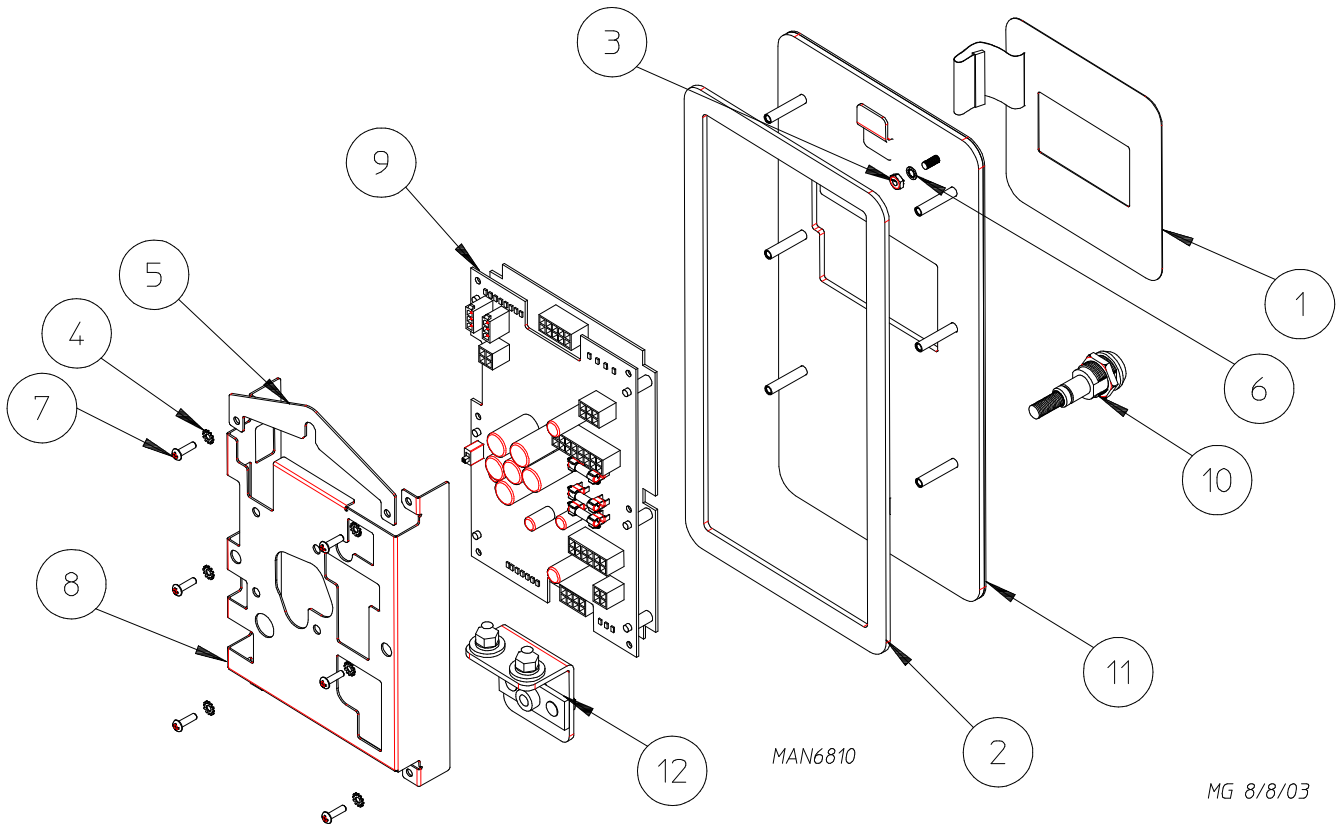
Table of Contents

Front Panel Assembly	5
Coin Computer Panel	6
Coin Vault Assembly	7
Coin Panel Assembly	8
Main Door Assembly	9
Main Door Switch Assembly	10
Tumbler / Support Assemblies	11
Top Locking Lint Basket Assembly	12
Bottom Locking Lint Basket Assembly	13
Separator Assembly	14
Rotational Sensor / Sail Switch and Teflon® Backup Washer Plate	15
Lint Coop and Adjustment Wheel Bracket Assembly	16
Left Rear Wheel Bracket (3 Bolt)	17
Right Rear Wheel Bracket (3 Bolt)	18
Microprocessor Temperature Sensor Bracket Assembly	19
Top Burner Box Assembly	20
Bottom Burner Box Assembly	21
Blower Motor Assembly	22
Top Rear Electrical Panel 120v 1ø 50/60 Hz	23
Bottom Rear Electrical Panel 120-240v 1ø 50/60 Hz	24
Drive Motor / Motor Mount Assemblies	25
Upper Exhaust Duct Assembly	26
Lower Exhaust Duct Assembly	27
Rear Back Guard Assembly	28
Wrapper Assembly and Gasket	29
S.A.F.E. System Assembly	30

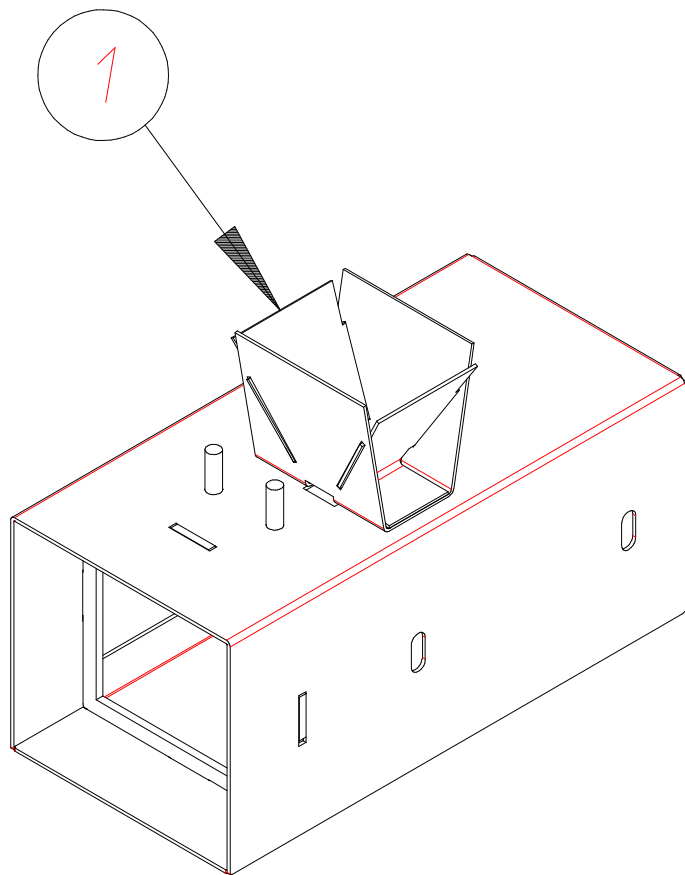


<u>Illus. No.</u>	<u>Part No.</u>	<u>Qty.</u>	<u>Description</u>
1	883945	1	White Front Panel Assembly (includes illus. nos. 1, 8, and 9)
	883946	1	Bisque Front Panel Assembly (includes illus. nos. 1, 8, and 9)
2	150517	10	#10-16 x 1-1/4" Hex Head TEK Screw
3	800453	2	Main Door Switch Assembly
4	150311	2	#10-16 x 3/4" TEK Screw
5	854117	1	Kick Plate
6	150311	2	#10-16 x 3/4" Head TEK Screw
7	150309	8	#10-16 x 1/2" Hex Head TEK Screw
8	881987	2	Friction Door Latch Kit (includes illus. nos. 8 and 9)
9	154215	4	5/32 x 1/4" Rivet
10	102317	10	Foam Block
11	116329	1	Upper Front Panel Insulation
12	116330	1	Lower Front Panel Insulation

Coin Computer Panel



<u>Illus. No.</u>	<u>Part No.</u>	<u>Qty.</u>	<u>Description</u>
1	112583	1	Phase 7 Coin Keypad
2	117603	1	1/8" x 9/16" Noise Suppression Tape
3	152001	1	#8-32 x 3/8" Hex Nut
4	153010	6	#6 External and Internal Star Washer
5	360161	1	Control Panel Support Bracket
6	153012	1	#8 Internal Star Washer
7	150001	6	#6-32 x 1/2" Phillips Round Head Machine Screw
8	354227	1	Computer Cover
9	887014	1	Phase 7 Dual Coin Board with S.A.F.E.
10	182621	1	Computer Panel Lock Assembly
11	860071	1	Phase 7 Control Panel
12	860025	1	Control Lock Base Assembly

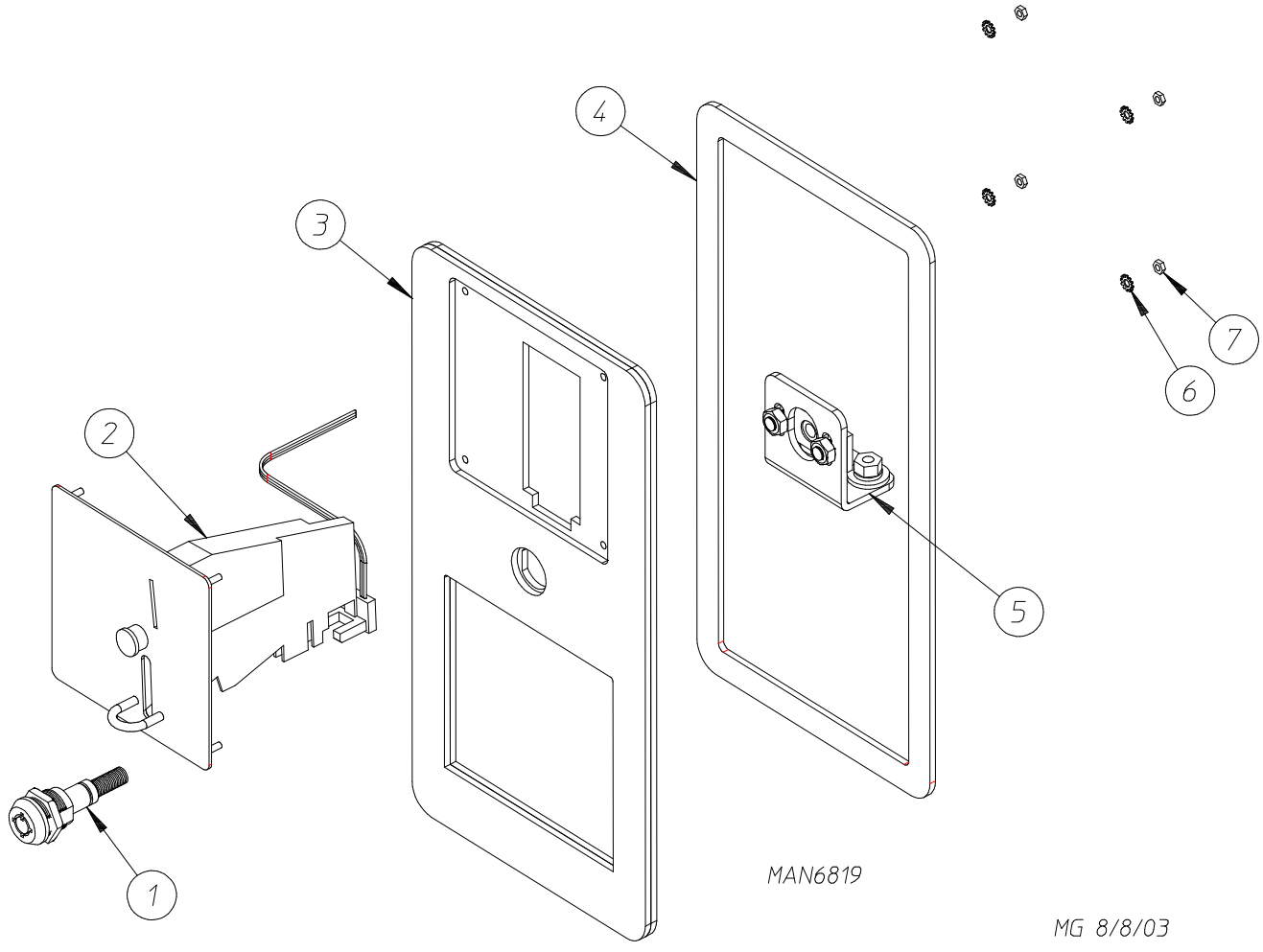


MAN6818

MG 8/8/03

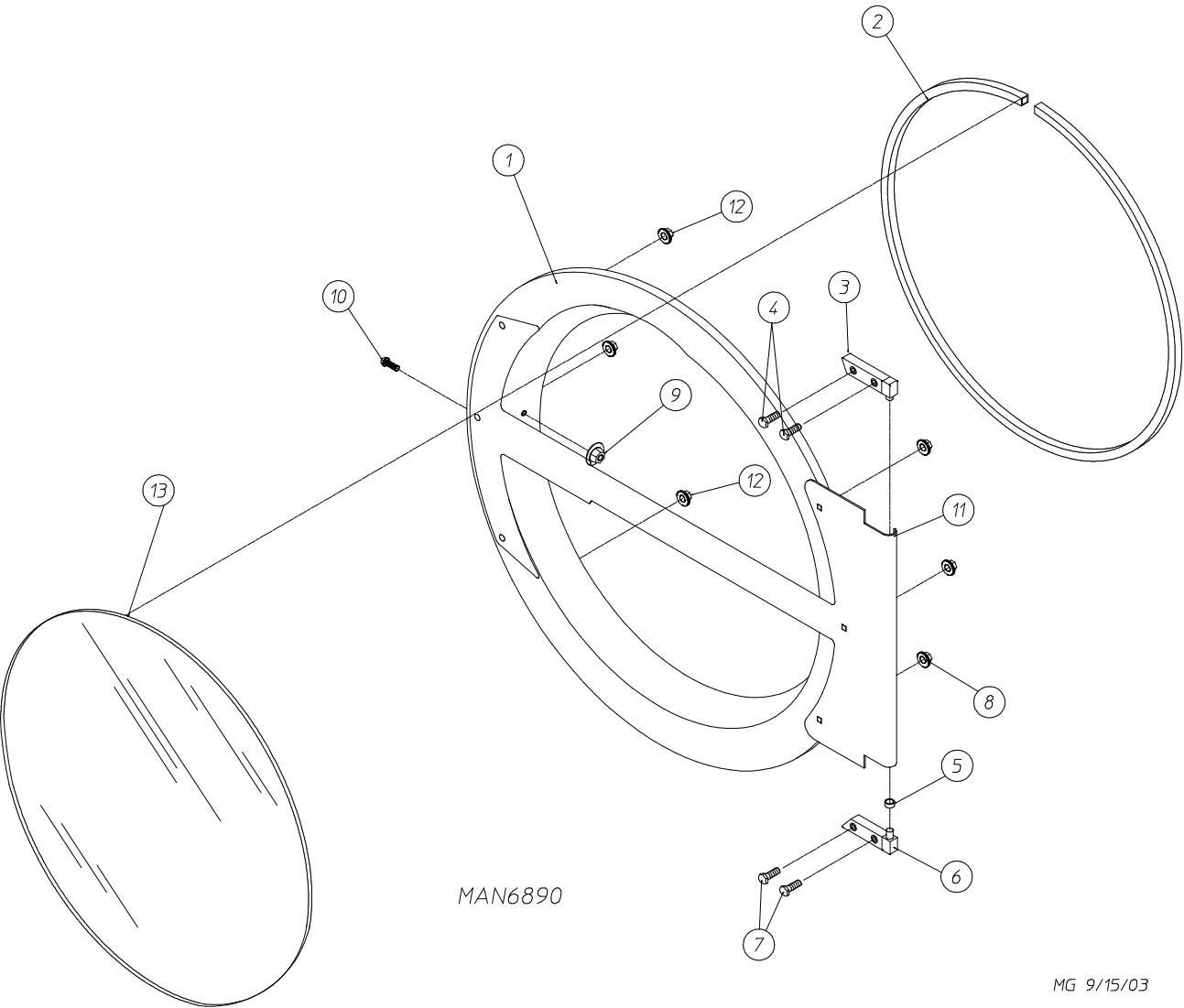
<u>Illus. No.</u>	<u>Part No.</u>	<u>Qty.</u>	<u>Description</u>
1	860022	1	Coin Vault

Coin Panel Assembly



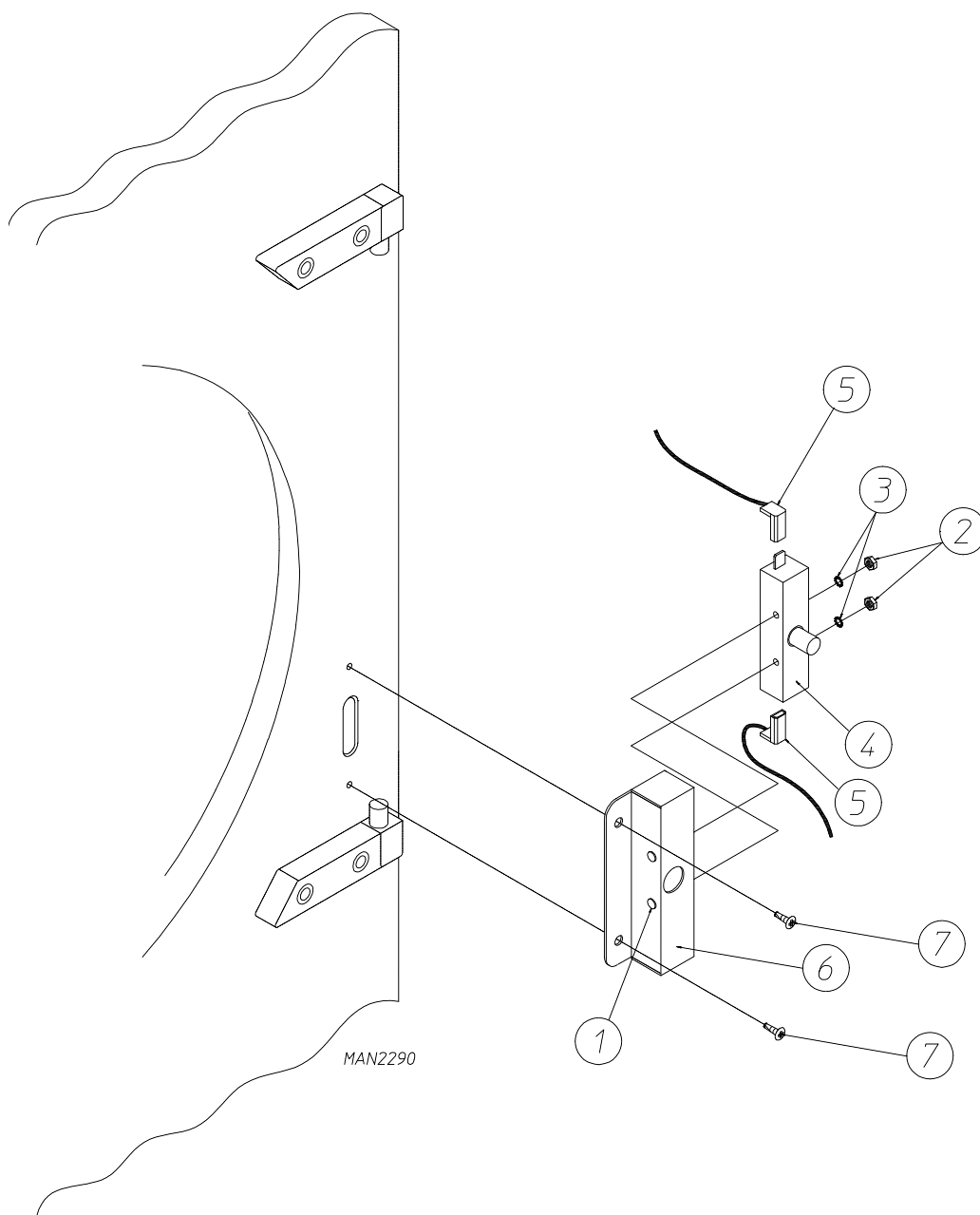
<u>Illus. No.</u>	<u>Part No.</u>	<u>Qty.</u>	<u>Description</u>
1	182621	1	Computer Panel Lock Assembly
2	803612	1	Hanke 25¢ U.S. Coin Acceptor Assembly
3	860027	1	Coin Panel
4	117603	1	1/8" x 9/16" Noise Suppression Tape
5	860028	1	Coin Panel Lock Assembly
6	153010	4	#6 Internal and External Star Washer
7	152102	4	M3 Hex Nut

Main Door Assembly

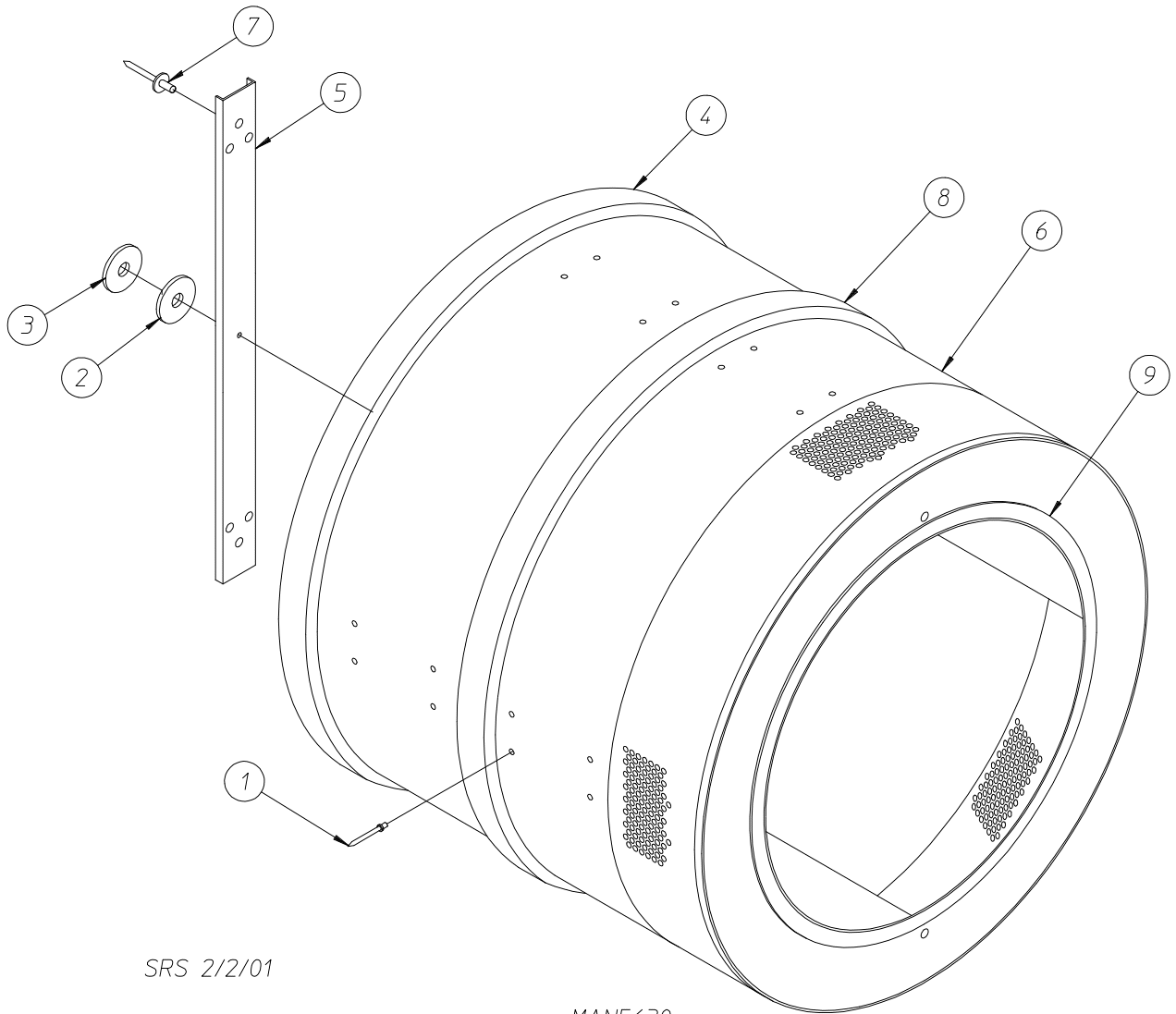


<u>Illus. No.</u>	<u>Part No.</u>	<u>Qty.</u>	<u>Description</u>
1	170336	1	Cold Rolled Steel Main Door Ring
2	102354	1	Extruded Steel Door Gasket
3	170329	1	Top Hinge Block
4	150445	2	1/4-20 x 3/4" Socket Head Cap Screw
5	153031	1	1/4" Nylon Washer
6	170331	1	Bottom Hinge Block
7	150445	2	1/4-20 x 3/4" Socket Head Cap Screw
8	152014	3	1/4-20 Free Spin Wash Nut
9	151010	1	#10-32 Black Hex Acorn Nut
10	150120	1	#10-32 x 7/16" Door Latch Screw
11	816656	1	Cold Rolled Steel Main Door Handle Assembly
12	152014	3	1/4-20 Free Spin Wash Nut
13	102211	1	Door Glass with Notch

Main Door Switch Assembly



<u>Illus. No.</u>	<u>Part No.</u>	<u>Qty.</u>	<u>Description</u>
1	153566	2	#6-32 x 7/8" Clinch Stud
2	152013	2	#6-32 Hex Nut
3	153010	2	#6 Star Washer
4	137005	1	Door Switch
5	122636	2	Flag Terminal
6	881211	1	Black Main Door Switch Housing ONLY
	881153	1	Black Main Door Switch Housing Complete (includes illus. nos. 1 through 4 and 6)
7	150301	2	#8-18 x 7/16" Phillips Pan Head TEK Screw

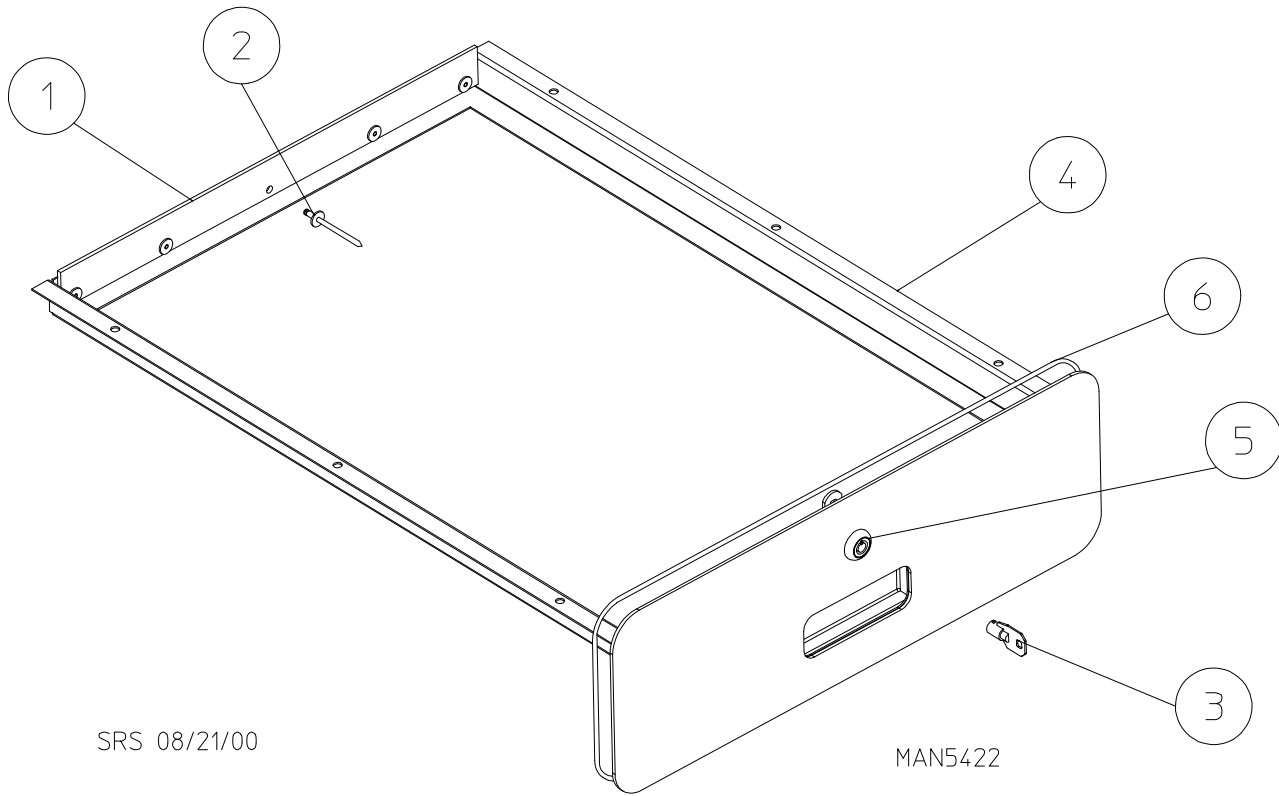


SRS 2/2/01

MAN5630

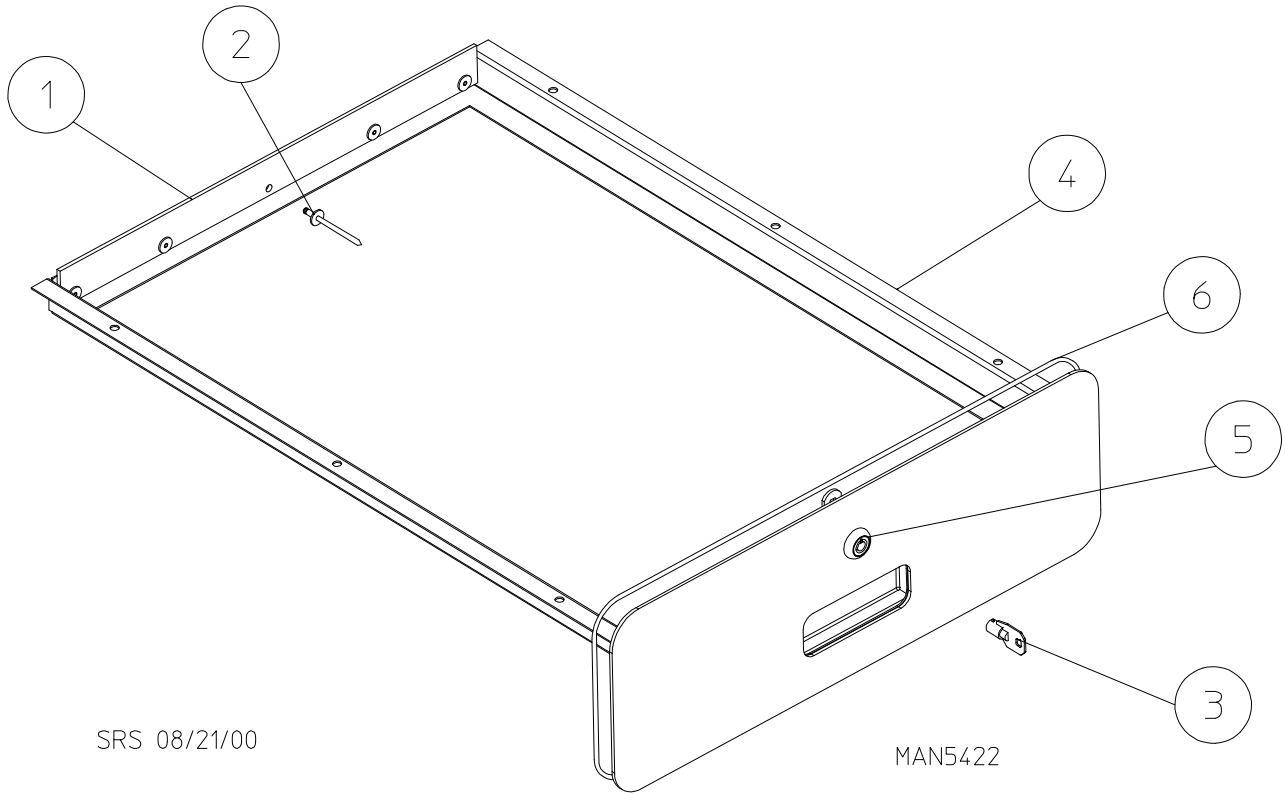
<u>Illus. No.</u>	<u>Part No.</u>	<u>Qty.</u>	<u>Description</u>
1	154210	40	5/32" x 3/16" Pop Rivet
2	354217	1	Spacer Plate
3	153048	1	Inner Friction Teflon® Pad
4	116332	1	Felt Collar
5	860101	1	Tumbler Assembly for One Arm Tumbler Support (includes illus. nos. 1, 4, and 9)
6	154210	6	5/32" x 3/16" Pop Rivet
7	100191	1	12 Rib 105" Long (J) High Temperature Belt
8	115992	1	Inner Ring Felt Collar
	401010	1	#847 Adhesive for Felt Collar (5 oz. tube)
9	115907	1	Front Felt Collar
	401010		Felt Adhesive (5 oz. tube)

Top Locking Lint Basket Assembly



<u>Illus. No.</u>	<u>Part No.</u>	<u>Qty.</u>	<u>Description</u>
1	115904	1	Lint Basket Felt
2	154210	5	5/32" x 3/16" Pop Rivet
3	160140	1	Key ONLY for XX4451
4	882787	1	Top Locking Lint Basket with Lock (white) (includes illus. nos. 1 through 5)
	882794	1	Top Locking Lint Basket with No Lock (bisque) (includes illus. nos. 1, 2, and 4)
5	160038	1	Lint Basket Lock with Cam (no key)
	160050	1	Lint Basket Lock (no cam and key) for Stainless Steel ONLY
6	117605	4	1/4" x 3/8" Neoprene Sponge Tape (sold by the foot)

Bottom Locking Lint Basket Assembly

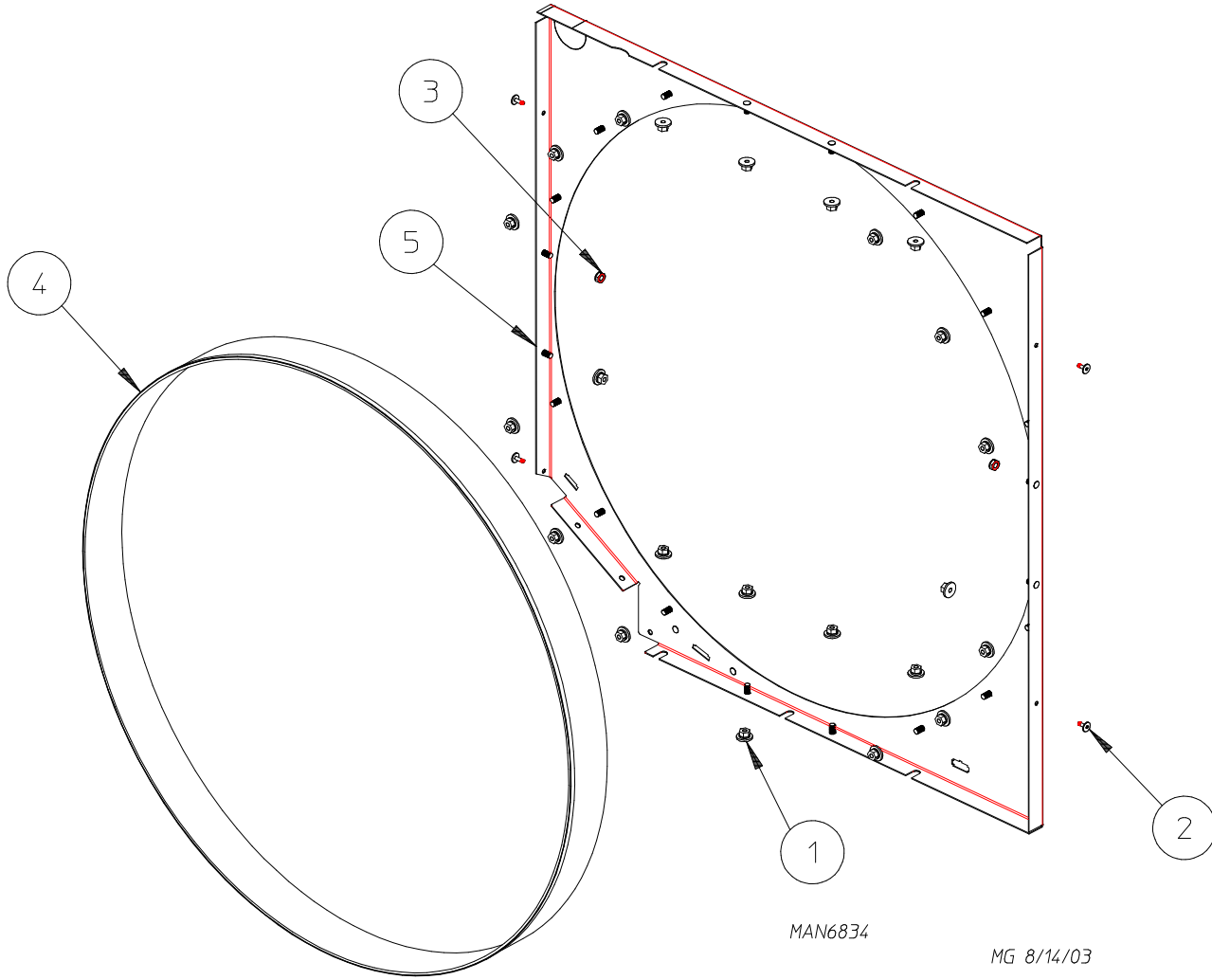


SRS 08/21/00

MAN5422

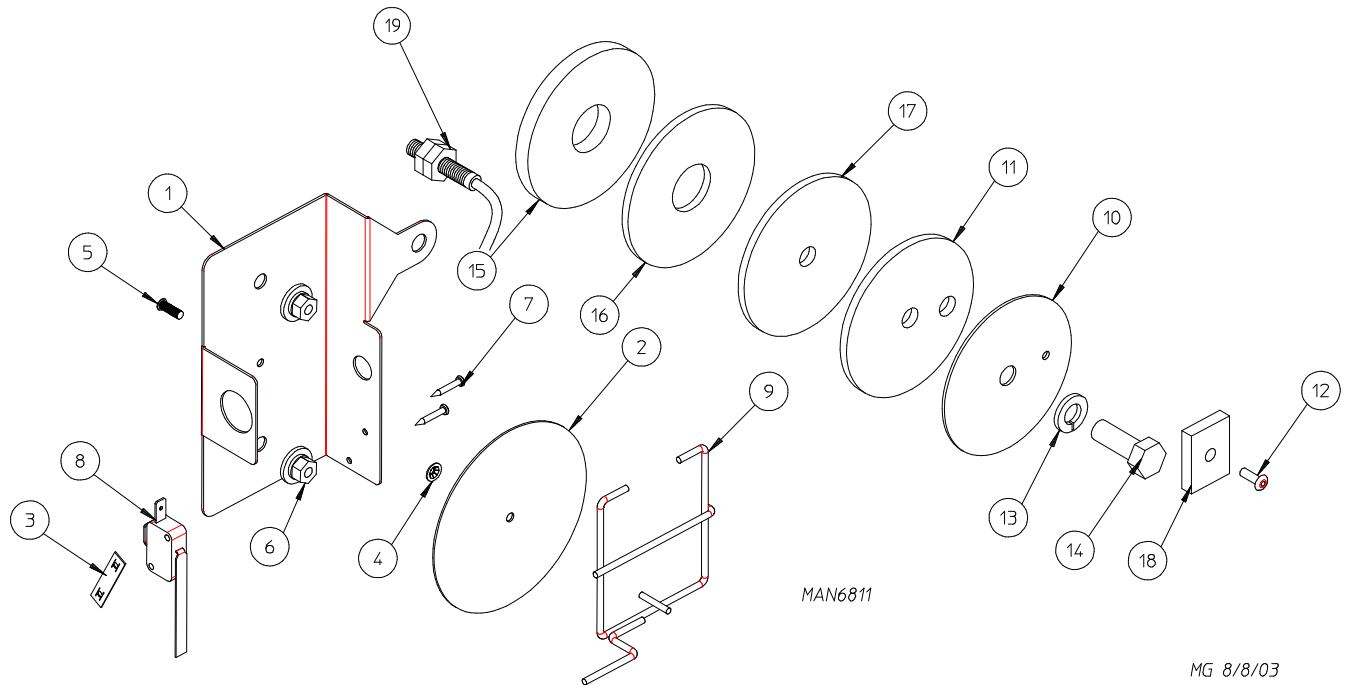
<u>Illus. No.</u>	<u>Part No.</u>	<u>Qty.</u>	<u>Description</u>
1	115904	1	Lint Basket Felt
2	154210	5	5/32" x 3/16" Pop Rivet
3	160140	1	Key ONLY for XX4451
4	882797	1	Bottom Locking Lint Basket Assembly with Lock (black) (includes illus. nos. 1 through 6)
	882796	1	Bottom Locking Lint Basket Assembly with No Lock (black) (includes illus. nos. 1, 2, 4, and 6)
5	160038	1	Lint Basket Lock with Cam (no key)
6	117604	4	1/8" x 3/8" Neoprene Sponge Tape (sold by the foot)

Separator Assembly



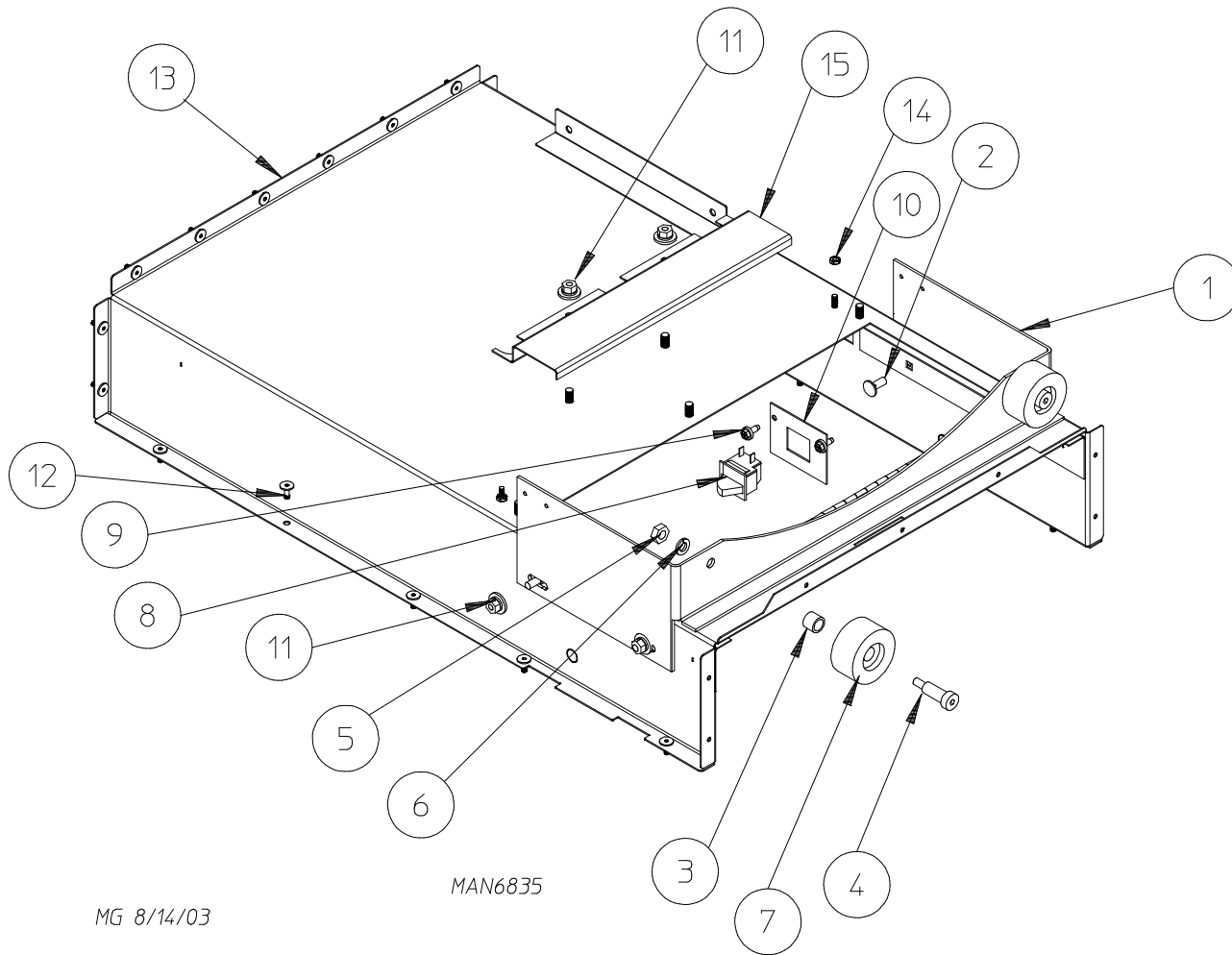
<u>Illus. No.</u>	<u>Part No.</u>	<u>Qty.</u>	<u>Description</u>
1	152014	23	1/4-20 Free Spin Wash Nut
2	154210	4	5/32" x 3/16" Pop Rivet
3	152002	2	1/4-20 Hex Nut
4	115903	1	Tumbler Separation Felt with Elastic
5	860039	1	Separator Bracket
-	883938	1	Inner Ring Separator Assembly (includes illus. nos. 1 through 5)

Rotational Sensor / Sail Switch and Teflon® Backup Washer Plate



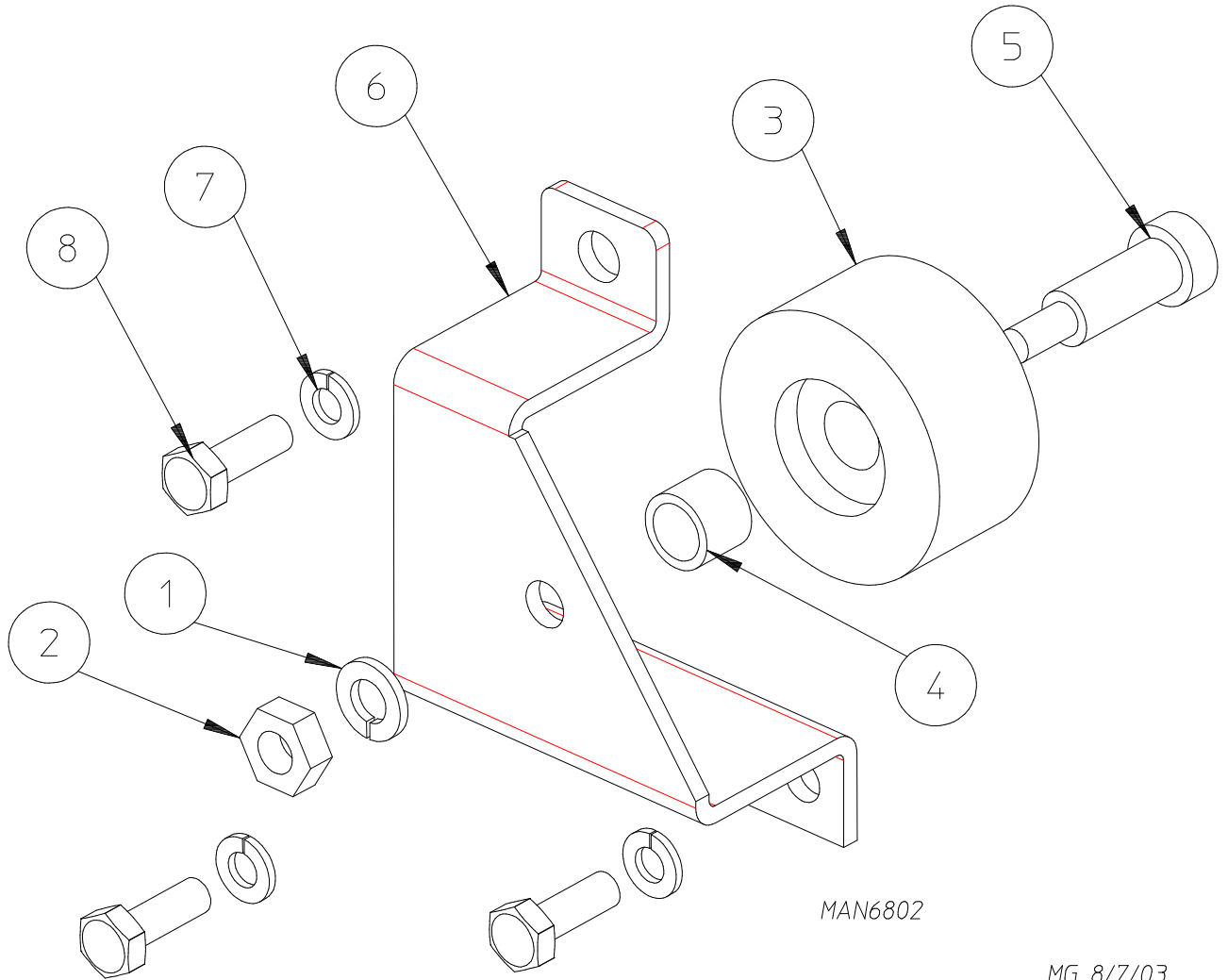
<u>Illus. No.</u>	<u>Part No.</u>	<u>Qty.</u>	<u>Description</u>
1	353283	1	Rotational Sensor Bracket
2	319202	1	Sail Switch Flat Damper
3	154004	1	Tinnerman Twin Speed Nut
4	154002	1	1/8" Push-On Fastener
5	153528	1	8/32" x 1/2" Self-Clinching Stud
6	152014	2	1/4-20 Free Spin Wash Nut
7	150303	2	Phillips Pan Head Screw
8	122200	1	Sail Switch
9	105550	1	Sail Switch Rod
	883934	1	Teflon® Backup Washer and Magnet Assembly (includes illus. nos. 10 through 12, 17, and 18)
10	353282	1	Thrust Bearing Backup Washer
11	353281	1	Backup Washer Rivet Spacer
12	154218	1	1/8" Diameter Aluminum Rivet
13	153053	1	5/16" Lock Washer
14	150640	1	5/16-18 X 7/8" Hex Bolt
15	354217	1	Plate Spacer
16	153048	1	Inner Friction Pad
17	153047	1	Outer Teflon® Friction Pad
18	102102	1	1" x 3/4" x 0.197" Door Magnet
19	822735	1	Phase 7 Rotational Sensor Switch

Lint Coop and Adjustment Wheel Bracket Assembly



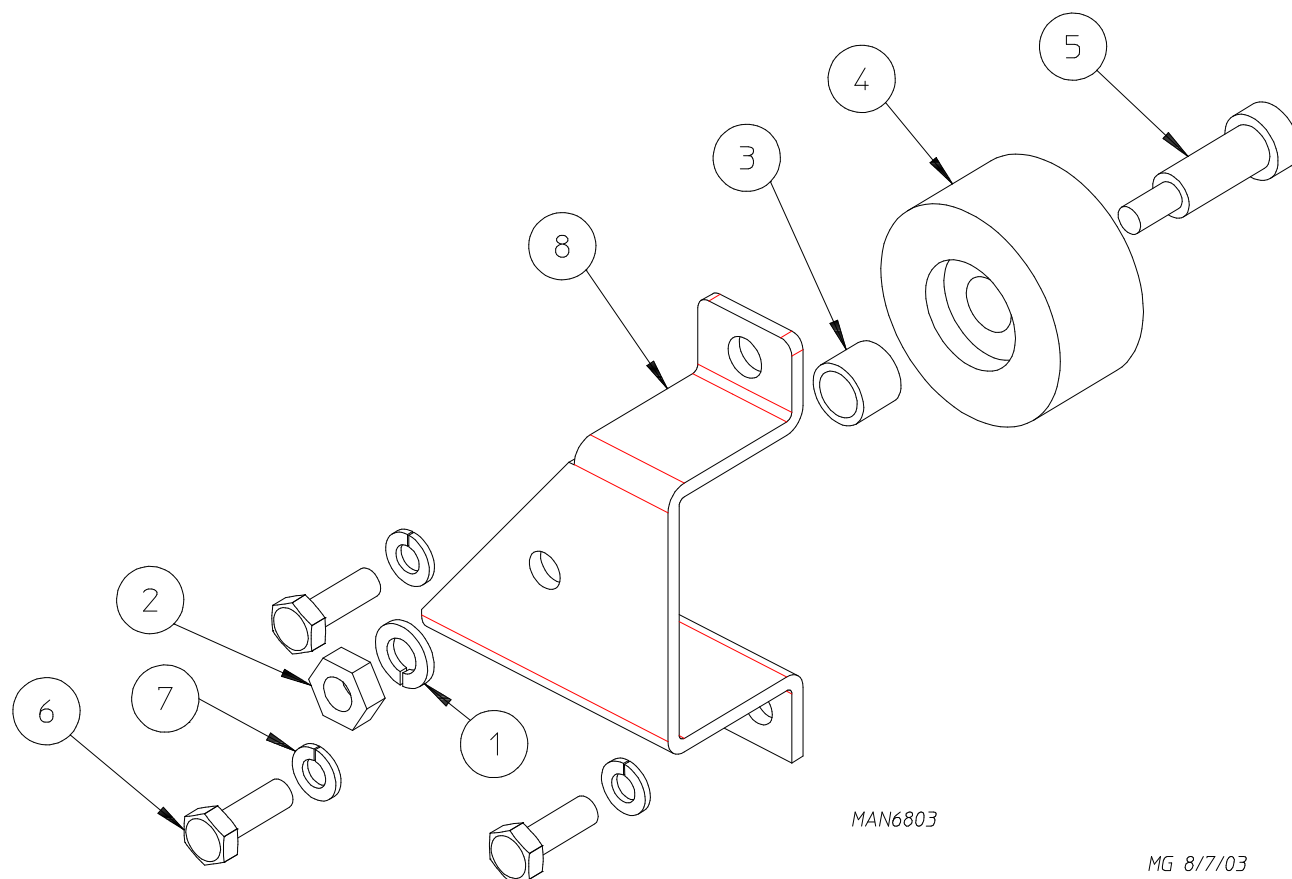
<u>Illus. No.</u>	<u>Part No.</u>	<u>Qty.</u>	<u>Description</u>
1	354067	1	Thrust Wheel Mount
2	150682	4	1/4-20 x 5/8" Stainless Steel Carriage Bolt
3	154284	2	Tumbler Wheel Spacer
4	154267	2	M10 x 25 mm Shoulder Screw
5	154013	2	M8 Hex Nut
6	153002	2	5/16" Split Lock Washer
7	180050	2	Duratred Idler Wheel
8	122002	1	Arcoelectric Door Switch
9	150309	2	#10-16 x 1/2" Hex Head TEK Screw
10	354156	1	Lint Switch Bracket
11	152014	6	1/4-20 Free Spin Wash Nut
12	154210	20	5/32" x 3/16" Pop Rivet
13	854029	1	Lint Coop
14	152001	2	#8-32 x 3/8" Hex Nut
15	354171	1	Harness Stiffener

Left Rear Wheel Bracket (3 Bolt)



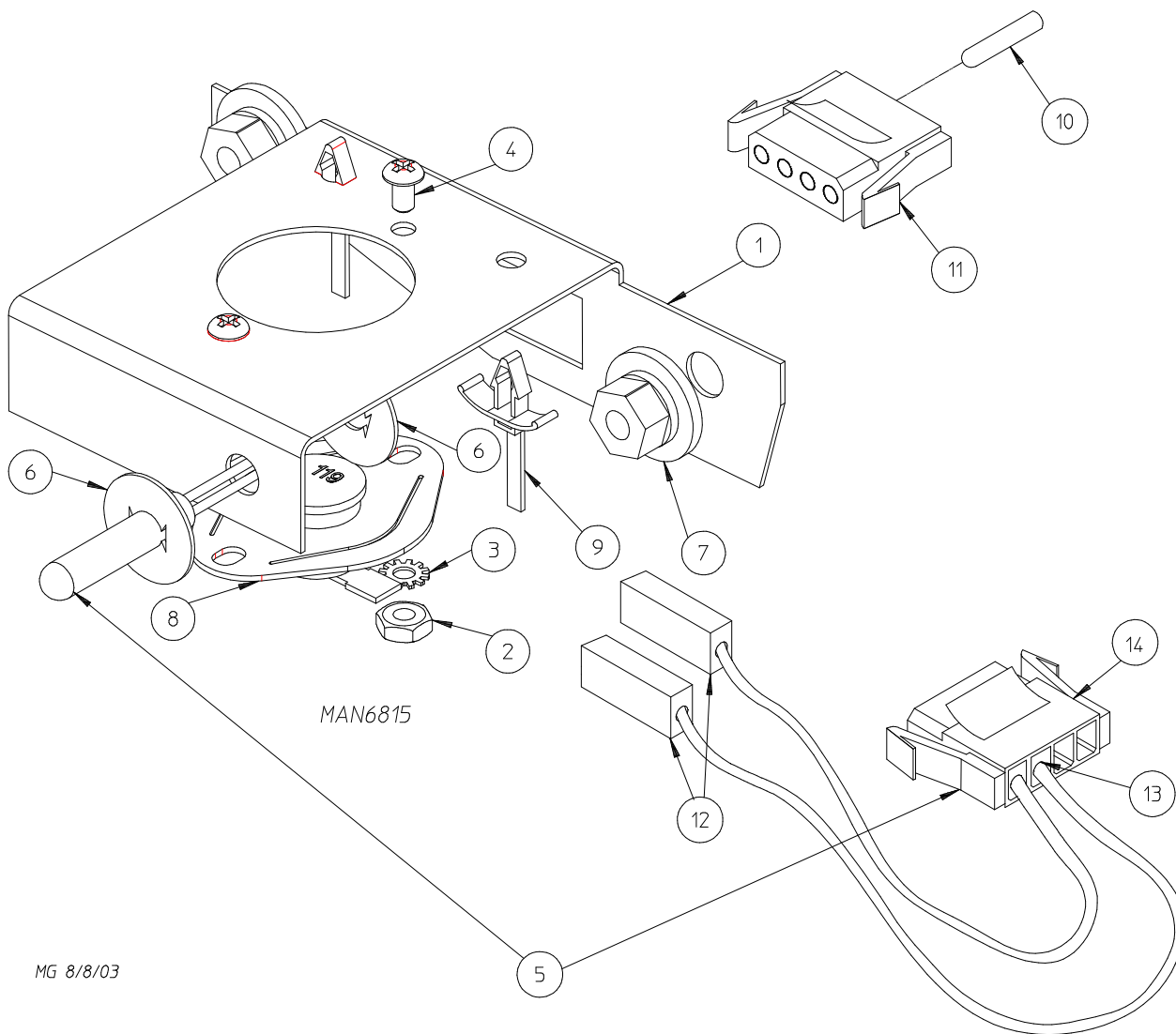
<u>Illus. No.</u>	<u>Part No.</u>	<u>Qty.</u>	<u>Description</u>
1	153002	1	5/16" Split Lock Washer
2	154013	1	M8 Hex Nut
3	180050	1	Duratred Idler Wheel
4	154284	1	Tumbler Wheel Spacer
5	154267	1	M10 x 25 mm Shoulder Screw
6	354253	1	Left Roller Wheel Bracket
7	153007	3	1/4" Split Lock Washer
8	150510	3	1/4-20 x 3/4" Hex Head Machine Bolt

Right Rear Wheel Bracket (3 Bolt)



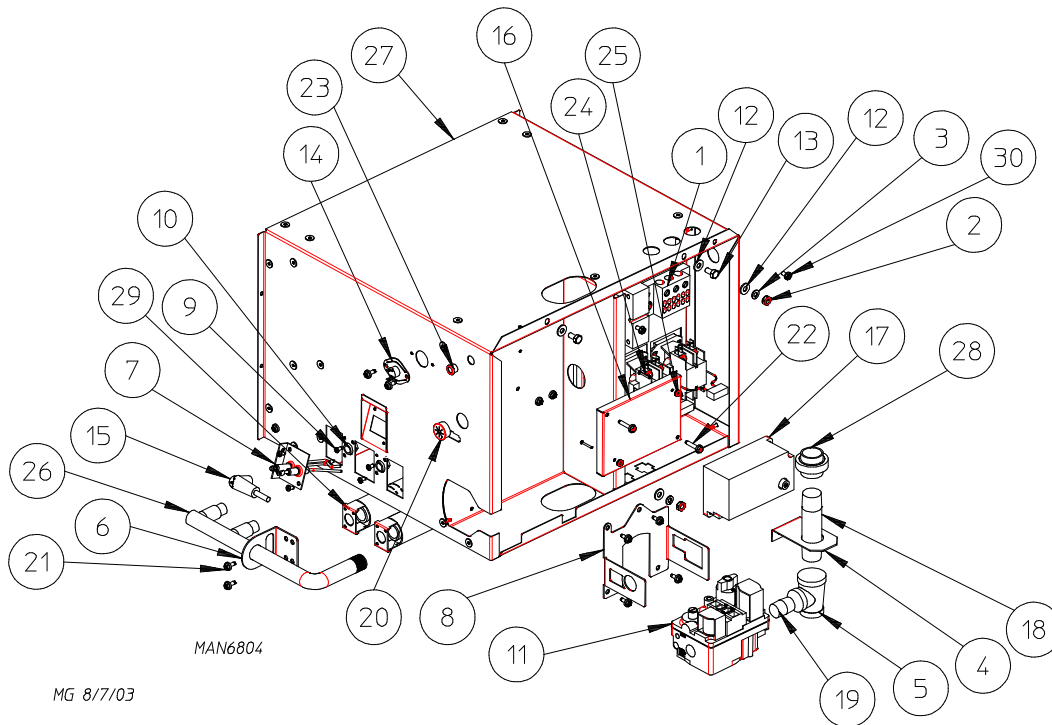
<u>Illus. No.</u>	<u>Part No.</u>	<u>Qty.</u>	<u>Description</u>
1	153002	1	5/16" Split Lock Washer
2	154013	1	M8 Hex Nut
3	154284	1	Tumbler Wheel Spacer
4	180050	1	Duratred Idler Wheel
5	154267	1	M10 x 25 mm Shoulder Screw
6	150510	3	1/4-20 x 3/4" Hex Head Machine Bolt
7	153007	3	1/4" Split Lock Washer
8	354252	1	Right Roller Wheel Bracket

Microprocessor Temperature Sensor Bracket Assembly



<u>Illus. No.</u>	<u>Part No.</u>	<u>Qty.</u>	<u>Description</u>
1	882682	1	Temperature Sensor Bracket Assembly Complete (includes illus. nos. 1 through 6, 8, and 12 through 14)
	354117	1	Sensor Bracket ONLY
2	152013	2	#6-32 Hex Nut
3	153010	2	#6 Star Washer
4	150005	2	#6-32 x 1/4" Phillips Round Head Machine Screw
5	883025	1	Microprocessor Temperature Sensor Probe Assembly (includes illus. nos. 5, 6, and 12 through 14)
6	154007	2	1/4" Push-On Fastener
7	152014	2	1/4-20 Free Spin Wash Nut
8	130119	1	Temperature Sensor
9	121494	2	3/16" Push Mount Wire Tie
10	122700	4	Pin Terminal ONLY
11	122604	1	4-Position Connectors (male)
12	121028	2	1/4" Push-On Terminal
13	122701	4	Socket Terminal ONLY
	122801	-	Pin / Socket Extraction Tool ... Not Illustrated
14	122605	1	4-Position Connectors (female)

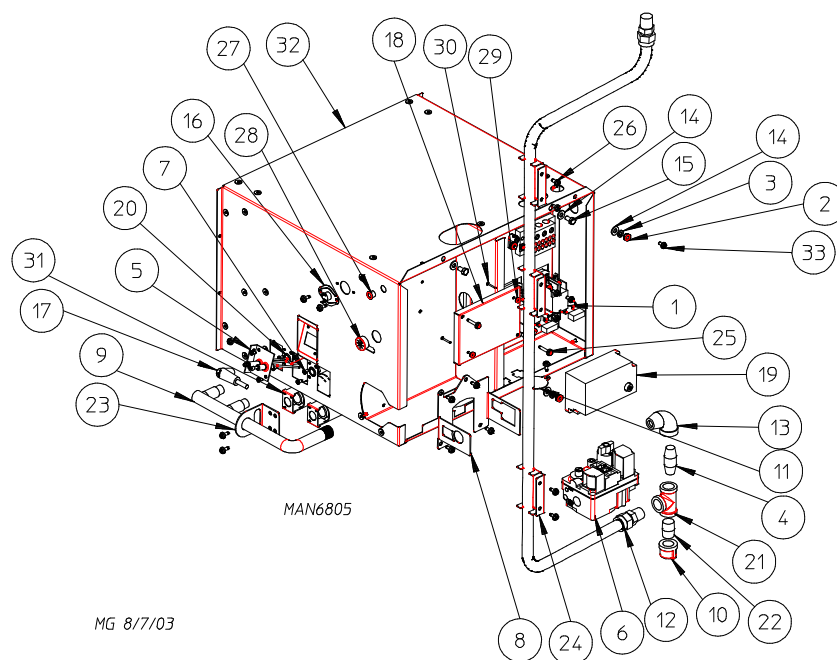
Top Burner Box Assembly



<u>Illus. No.</u>	<u>Part No.</u>	<u>Qty.</u>	<u>Description</u>
1	_____*	1	Top Rear Electric Panel Assembly
2	152002	2	1/4-20 Hex Nut
3	153007	2	1/4" Split Lock Washer
4	354163	1	Pipe Bracket
5	142505	1	3/4" x 1/2" x 1/2" Tee
6	360146	1	Burner Manifold Bracket
7	884265	1	Ignitor with Flame Probe
8	354049	1	Gas Valve Mounting Bracket
9	150301	6	#8-18 x 7/16" Phillips Pan Head TEK Screw
10	140844	2	Burner Orifice
11	887274	1	Gas Valve
12	153018	4	1/4" Flat Washer
13	150512	2	1/4-20 x 1/2" Hex Head Machine Bolt
14	130400	1	Temperature Sensor
15	128919	1	36" Ignition Cable
16	354162	1	Direct Spark Ignition Module Mounting Panel
17	887133	1	Direct Spark Ignition Johnson Control Module
18	142710	1	3/4" x 4" Black Nipple
19	142700	1	1/2" Close Nipple
20	121400	1	7/8" Universal Bushing
21	150309	12	#10-16 x 1/2" Hex Head TEK Screw
22	150299	2	#10 x 1" Hex Washer TEK Screw
23	121300	1	Open/Closed Bushing
24	153562	2	#6-32 x 3/4" Black Self-Clinching Stud
25	152013	2	#6-32 Hex Nut
26	141228	1	2 Port Manifold
27	860029	1	Burner Box
28	142601	1	3/4" Black Union
29	141141	2	Burner Tube
30	120910	2	Green Ground Screw

* Refer to Top Rear Electrical Panel 120v 1ø 50/60 Hz on [page 23](#).

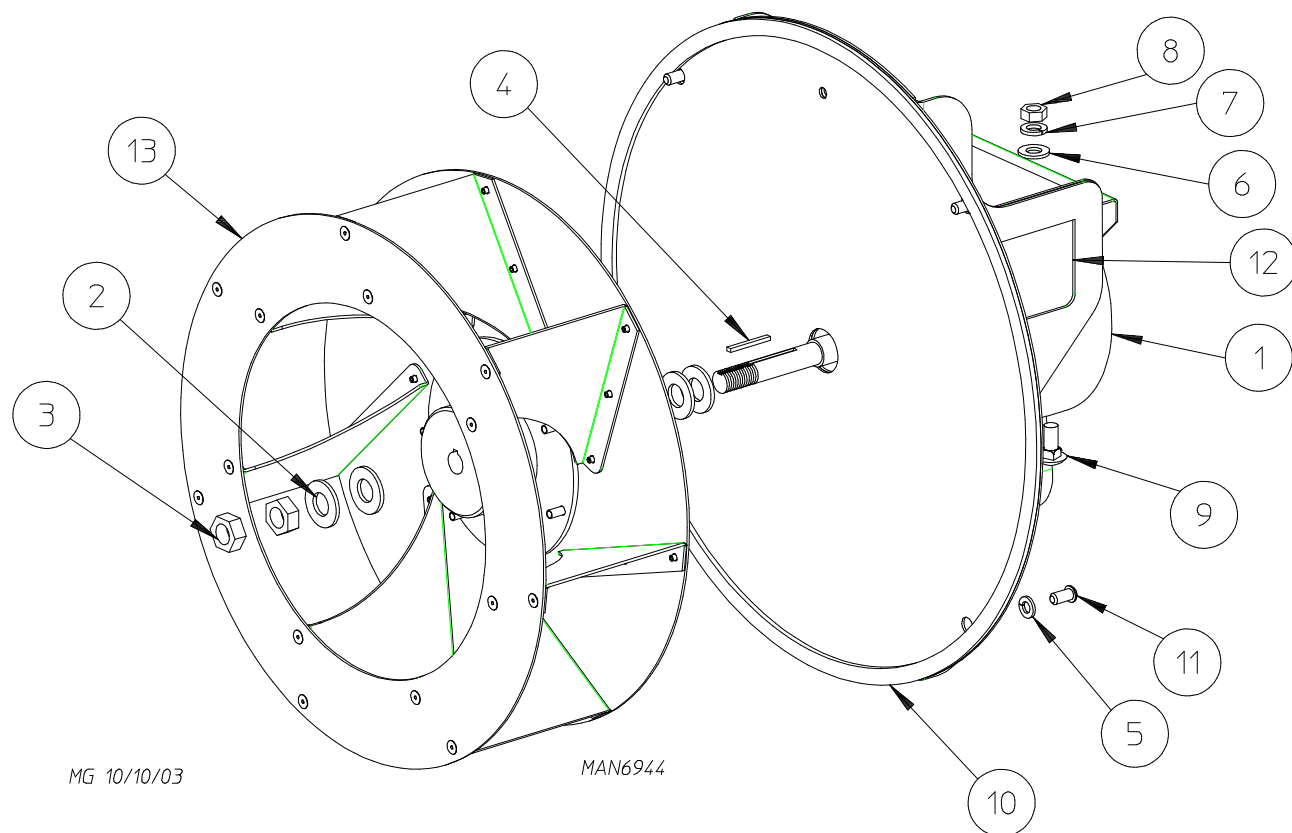
Bottom Burner Box Assembly



<u>Illus. No.</u>	<u>Part No.</u>	<u>Qty.</u>	<u>Description</u>
1	_____*	1	Bottom Rear Electric Panel Assembly
2	152002	2	1/4-20 Hex Nut
3	153007	2	1/4" Split Lock Washer
4	142715	1	1/2" x 2" Nipple
5	884265	1	Ignitor with Flame Probe
6	887274	1	Gas Valve
7	150301	6	#8-18 x 7/16" Phillips Pan Head TEK Screw
8	354049	1	Gas Valve Mounting Bracket
9	141228	1	2-Port Manifold
10	142619	1	1/2" N.P.T. End Cap
11	360109	1	Gas Line Hole Cover
12	143118	1	1/2" x 1/2" x 60" Stainless Steel Flex Hose
13	142506	1	1/2" x 1/2" Street Elbow
14	153018	4	1/4" Flat Washer
15	150512	2	1/4-20 x 1/2" Hex Head Machine Bolt
16	130400	1	Temperature Sensor
17	128919	1	36" Ignition Cable
18	354162	1	Direct Spark Ignition Module Mounting Panel
19	887133	1	Direct Spark Ignition Johnson Control Module with Label
20	140844	2	Burner Orifice
21	142820	1	1/2" x 12" x 1/2" Tee
22	142700	1	1/2" Close Nipple
23	360146	11	Burner Manifold Bracket
24	354261	3	Flexible Gas Line Bracket
25	150299	2	#10 x 1" Hex Washer Screw
26	150309	17	#10-16 x 1/2" Hex Head TEK Screw
27	121300	1	Open/Closed Bushing
28	121400	1	7/8" Universal Bushing
29	152013	2	#6-32 Hex Nut
30	153562	2	#6-32 x 3/4" Black Self-Tapping Clinching Stud
31	141141	2	Burner Tube
32	860029	1	Burner Box
33	120910	2	Green Ground Screw

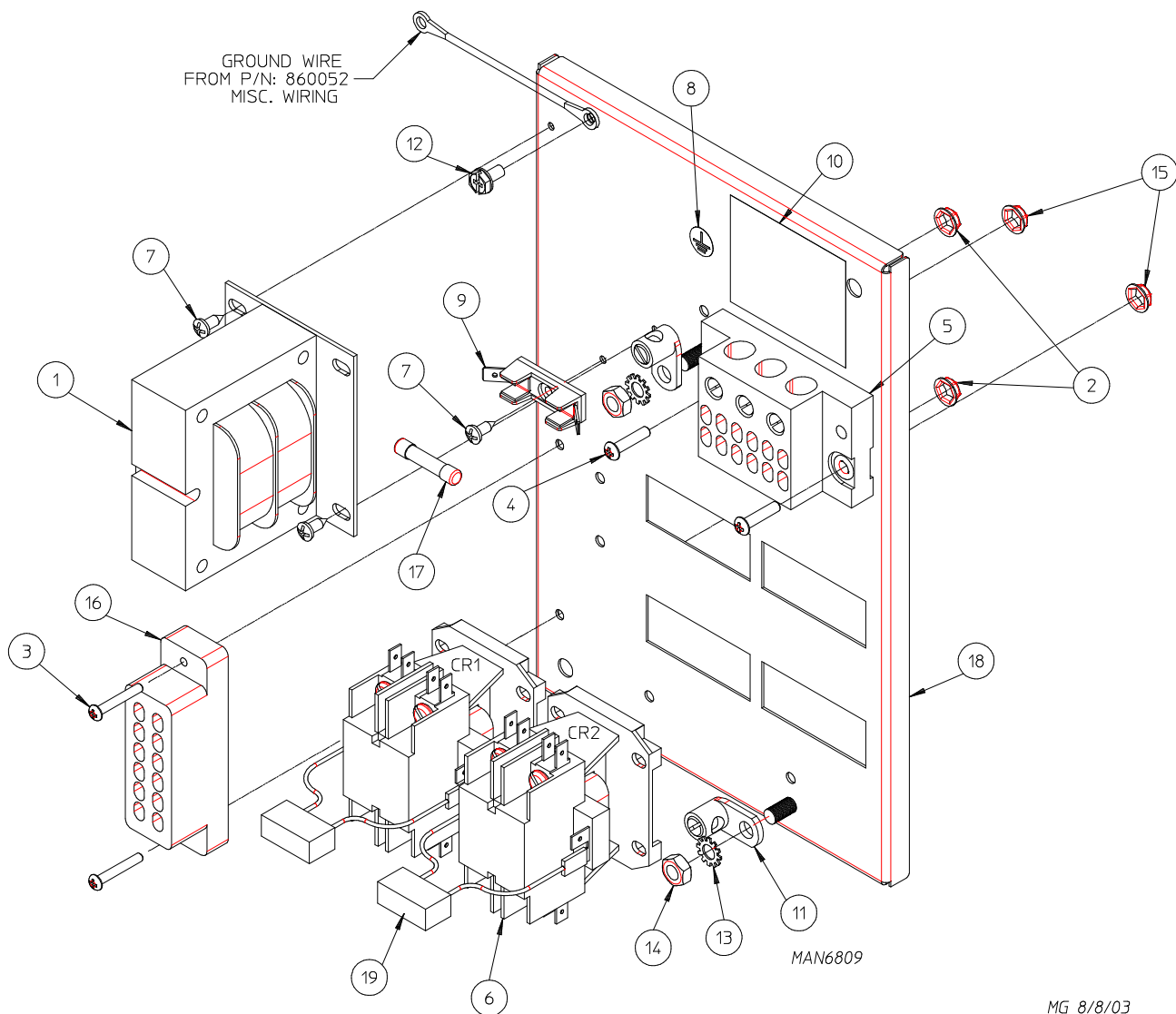
* Refer to Bottom Rear Electrical Panel 120-240v 1ø 50/60 Hz on [page 24](#).

Blower Motor Assembly



<u>Illus. No.</u>	<u>Part No.</u>	<u>Qty.</u>	<u>Description</u>
1	181038	1	1/4 hp 115/230v/60 Hz Blower Motor
2	153050	4	1/2" x 1-1/16" Flat Washer
3	152006	2	1/2-20 Left-Hand Jam Nut
4	100731	1	1/8" x 3/32" x 1-1/8" Key
5	153007	4	1/4" Split Lock Washer
6	153001	4	5/16" Flat Washer
7	153002	4	5/16" Split Lock Washer
8	152004	4	5/16-18 Hex Nut
9	154279	4	5/16-18 x 3/4" Carriage Bolt
10	117604	1	1/8" x 3/8" Neoprene Sponge Tape (sold by the foot)
11	150111	4	1/4-20 x 1/2" Phillips Round Head Machine Screw
12	884039	1	Blower Motor Mount ONLY
13	802029	1	12-1/2" Riveted Impellor with 1/2" Bore
	884040	1	Blower Motor and Mount Assembly Complete (includes illus. nos. 1 through 13)

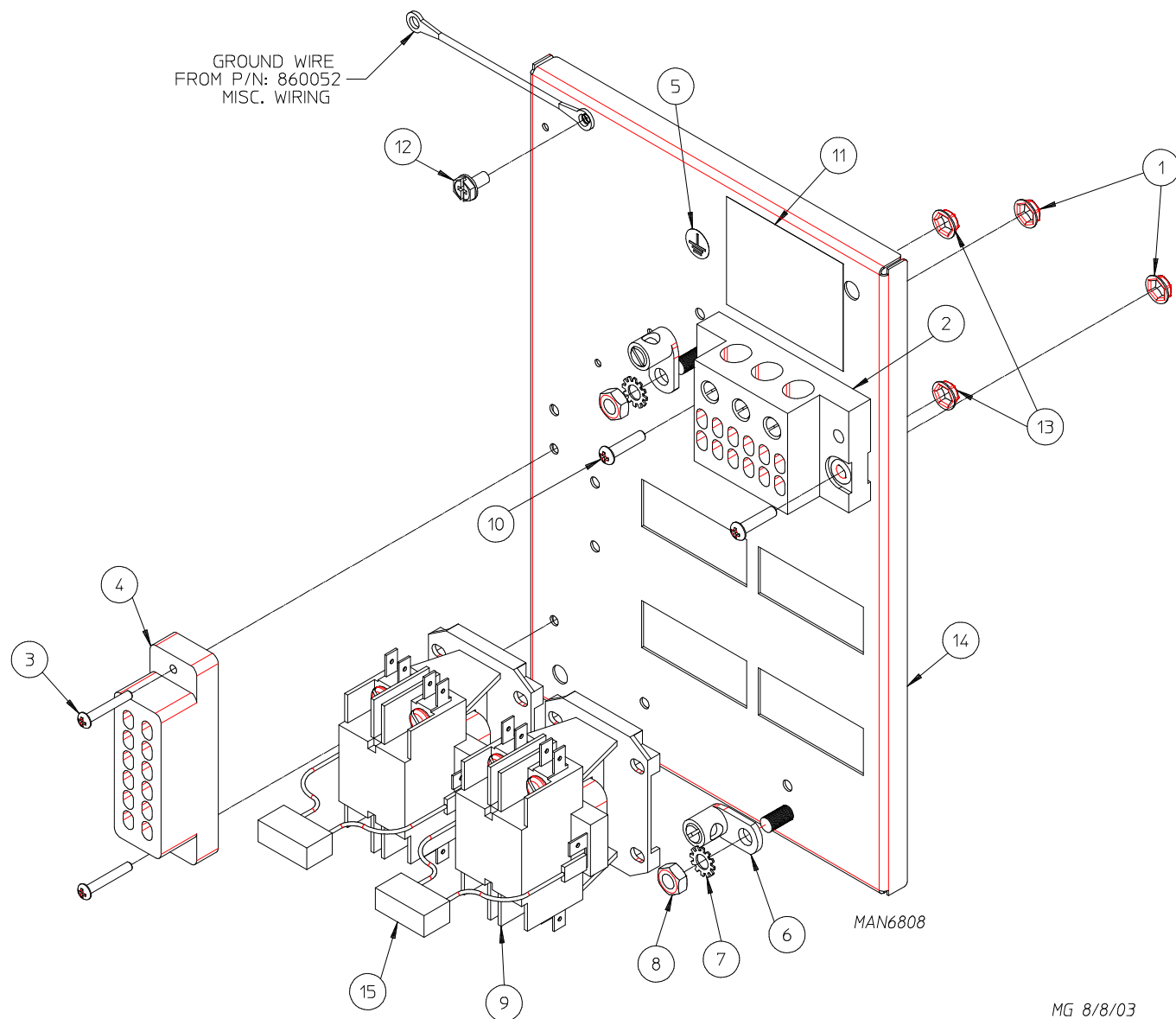
Top Rear Electrical Panel 120v 1ø 50/60 Hz



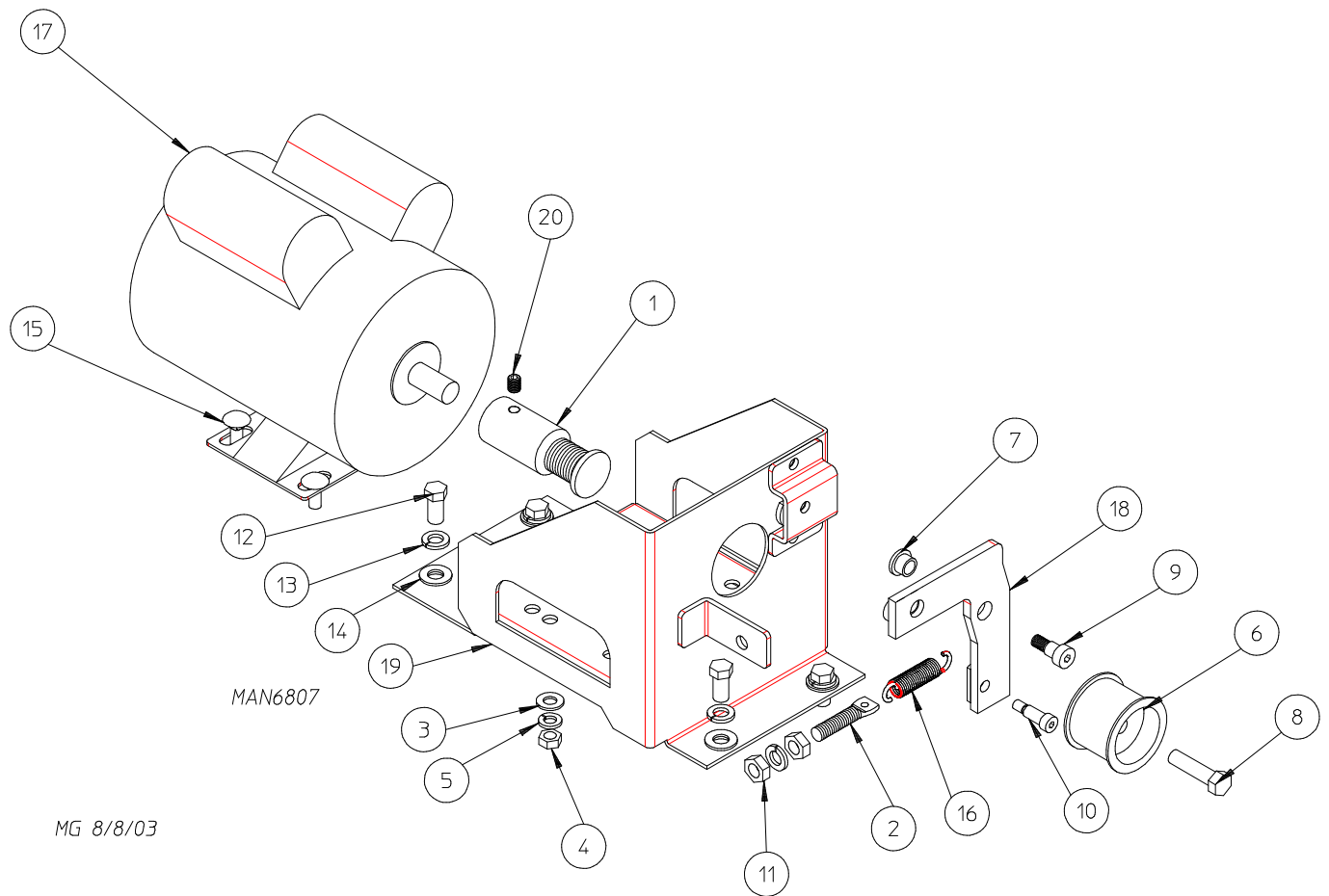
MG 8/8/03

<u>Illus. No.</u>	<u>Part No.</u>	<u>Qty.</u>	<u>Description</u>
1	860063	1	Transformer Assembly
2	151000	2	#6-32 Pal Nut
3	150002	2	#6-32 x 1" Phillips Round Head Screw
4	150103	2	#8-32 x 3/4" Phillips Round Head Machine Screw
5	120714	1	Quick Connect Power Block
6	132498	2	Double Pole 24v Contactor
7	150301	3	#8-18 x 7/16" Phillips Pan Head TEK Screw
8	112075	1	Ground Label
9	136008	1	Fuse Holder
10	114103	1	Electrical Service Label
11	121010	2	L-70 14-4 Terminal Lug
12	120910	1	Green Ground Screw
13	153021	2	1/4" External / Internal Shakeproof Washer
14	152002	2	1/4-20 Hex Nut
15	151001	2	#8-32 Pal Nut
16	120712	1	12 Position Block 250v 25A
17	136049	1	3/4-Amp (Slo-Blo) Fuse
18	860042	1	Rear Electrical Panel
19	824828	2	R.C. Network Assembly

Bottom Rear Electrical Panel 120-240v 1ø 50/60 Hz

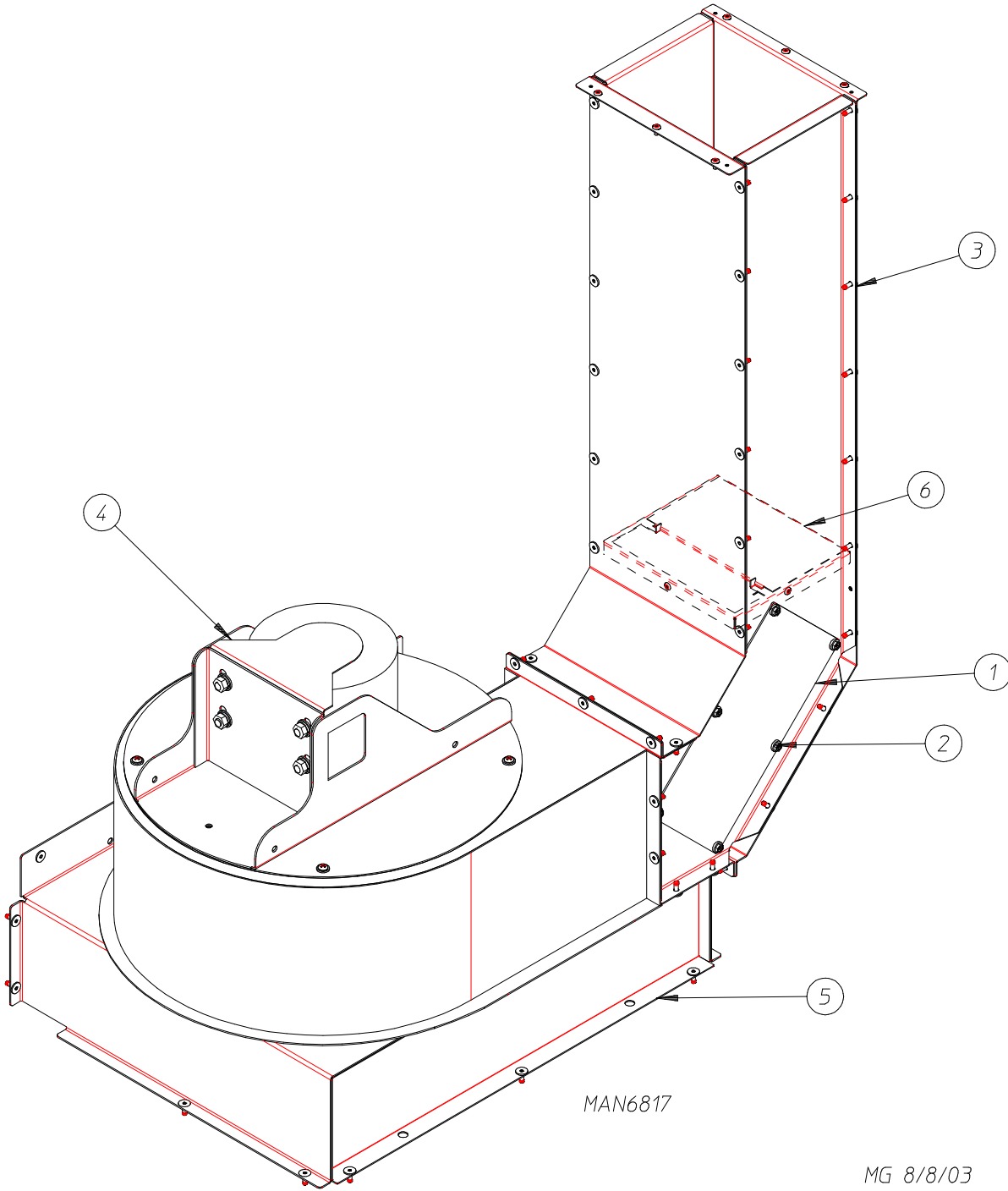


<u>Illus. No.</u>	<u>Part No.</u>	<u>Qty.</u>	<u>Description</u>
1	151001	2	#8-32 Pal Nut
2	120714	1	Quick Connect Power Block
3	150002	2	#6-32 x 1" Phillips Round Head Screw
4	120712	1	12 Position Block 250v 25A
5	112075	1	Ground Label
6	121010	2	L70 14-4 Terminal Lug
7	153021	2	1/4" External / Internal Shakeproof Washer
8	152002	2	1/4-20 Hex Nut
9	132498	2	Double Pole 24v Contactor
10	150103	2	#8-32 x 3/4" Phillips Round Head Machine Screw
11	114103	1	Electrical Service Label
12	120910	1	Green Ground Screw
13	151000	2	#6-32 Pal Nut
14	860042	1	Rear Electrical Panel
15	824828	2	R.C. Network Assembly

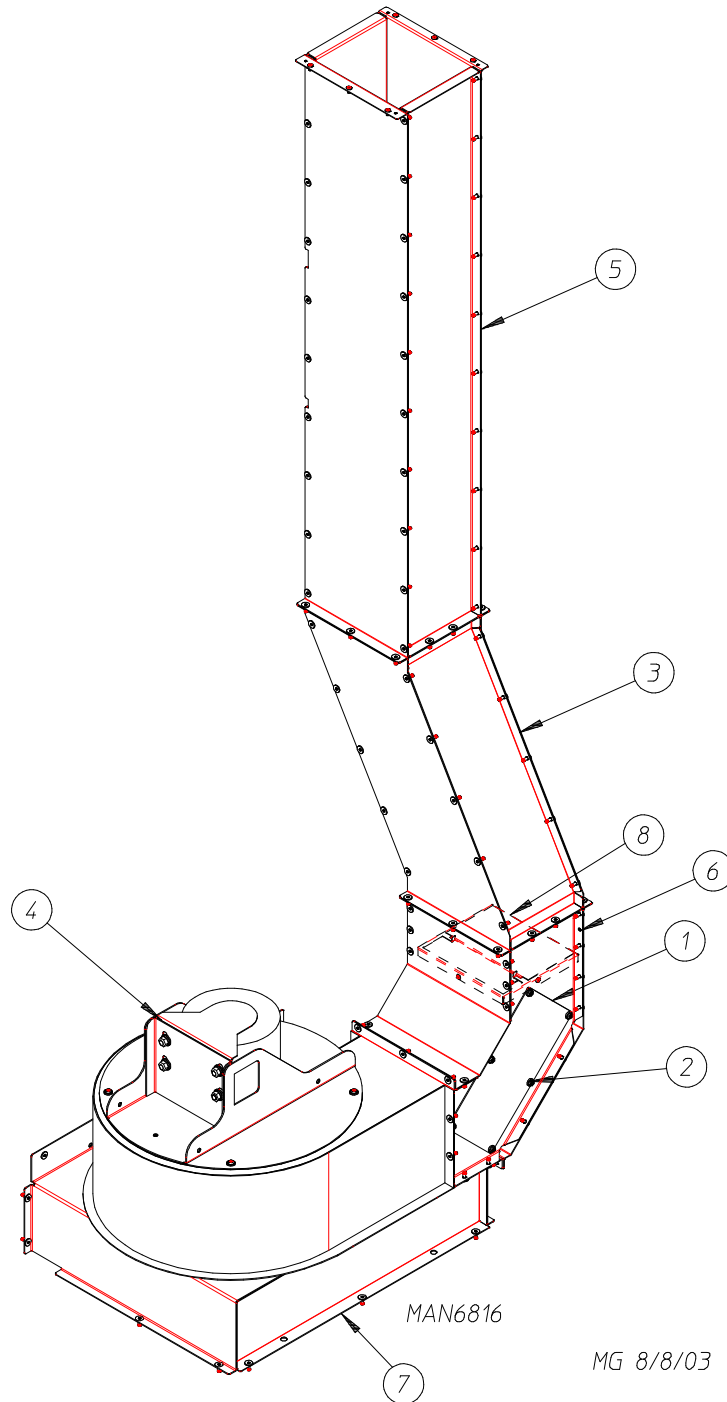


<u>Illus. No.</u>	<u>Part No.</u>	<u>Qty.</u>	<u>Description</u>
1	354263	1	Sheave
2	154274	1	3/8-16 x 2-1/4" Long Spade Bolt
3	153001	4	5/16" Flat Washer
4	152004	4	5/16-18 Hex Nut
5	153002	4	5/16" Split Lock Washer
6	100250	1	Efson Back Side Idler Assembly
7	121350	1	13/32" x 3/8" I.D. Bronze Bushing
8	150600	1	3/8-16 x 1-1/2" Hex Head Tap Bolt
9	154266	1	5/16-18 x 3/8" x 3/8" Shoulder Screw
10	154276	1	1/4-20 x 1/4" x 5/8" Shoulder Bolt
11	152005	2	3/8-16 Hex Nut
12	150508	4	3/8-16 x 3/4" Hex Machine Bolt
13	153005	5	3/8" Split Lock Washer
14	153004	4	3/8" x 1" O.D. Flat Washer
15	154279	4	5/16-18 x 3/4" Carriage Bolt
16	157010	1	1-7/8" Extension Spring
17	884371	1	1/4 hp 115v 60 Hz Motor and Mount Assembly Complete
18	854014	1	Idler Arm
19	854012	1	Motor Mount
20	154321	1	5/16-24 x 3/8" Allen Setscrew

Upper Exhaust Duct Assembly

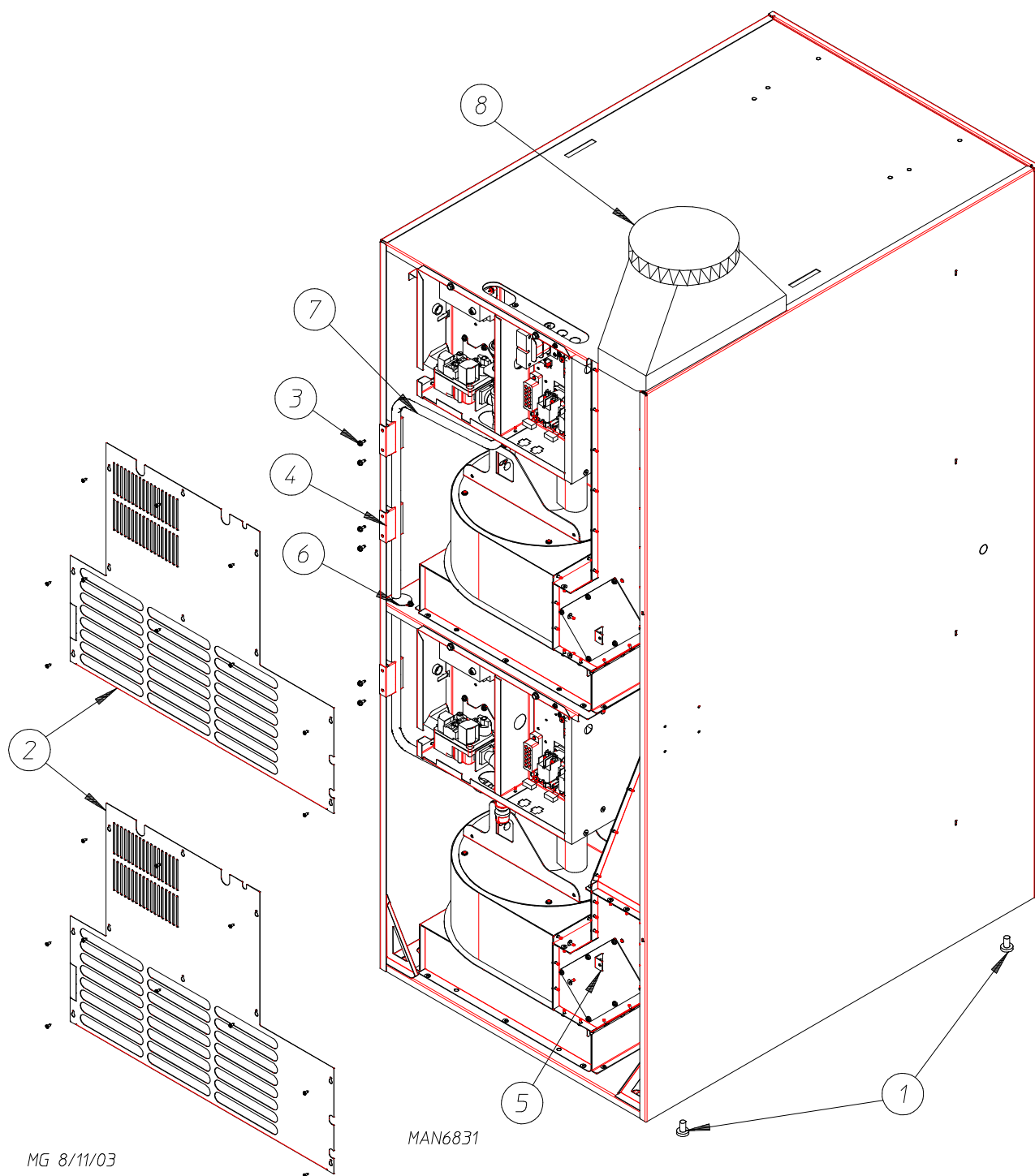


<u>Illus. No.</u>	<u>Part No.</u>	<u>Qty.</u>	<u>Description</u>
1	354078	1	Exhaust Access Plate
2	150309	6	#10-16 x 1/2" Pop Rivet
3	883939	1	Upper Blower Housing Complete (includes illus. nos. 3 and 6)
4	854056	1	Blower Motor Assembly
5	860018	1	Air Plenum
6	860017	1	Damper Assembly



<u>Illus. No.</u>	<u>Part No.</u>	<u>Qty.</u>	<u>Description</u>
1	354078	1	Exhaust Access Plate
2	150309	6	#10-16 x 1/2" Hex Head TEK Screw
3	883940	1	Middle Angle Lower Blower Housing Complete
4	854056	1	Blower Motor Assembly
5	883942	1	Top Lower Blower Housing Complete
6	883943	1	Bottom Lower Blower Housing Complete (includes illus. nos. 5 and 8)
7	860018	1	Air Plenum
8	860017	1	Damper Assembly

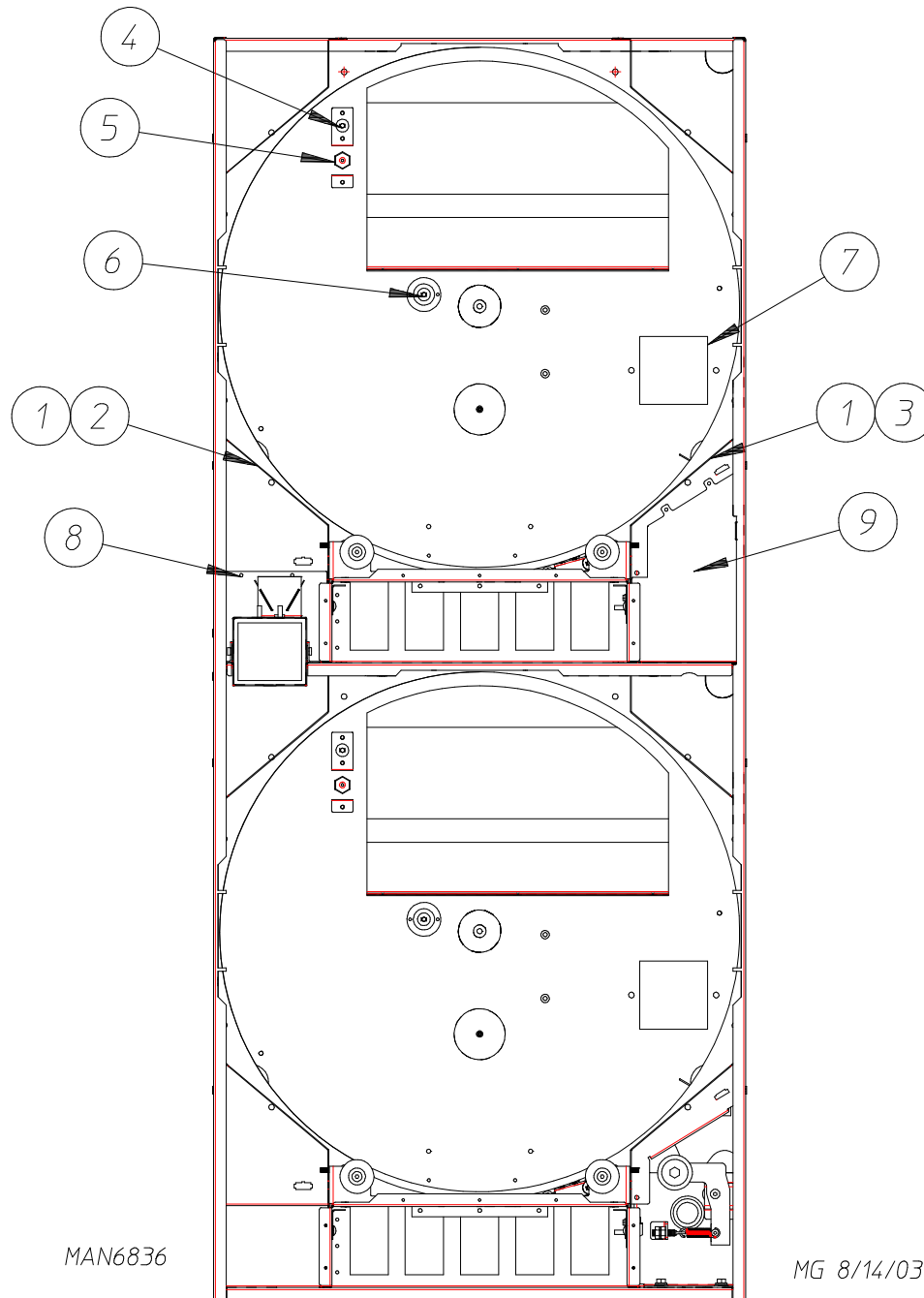
Rear Back Guard Assembly



MG 8/11/03

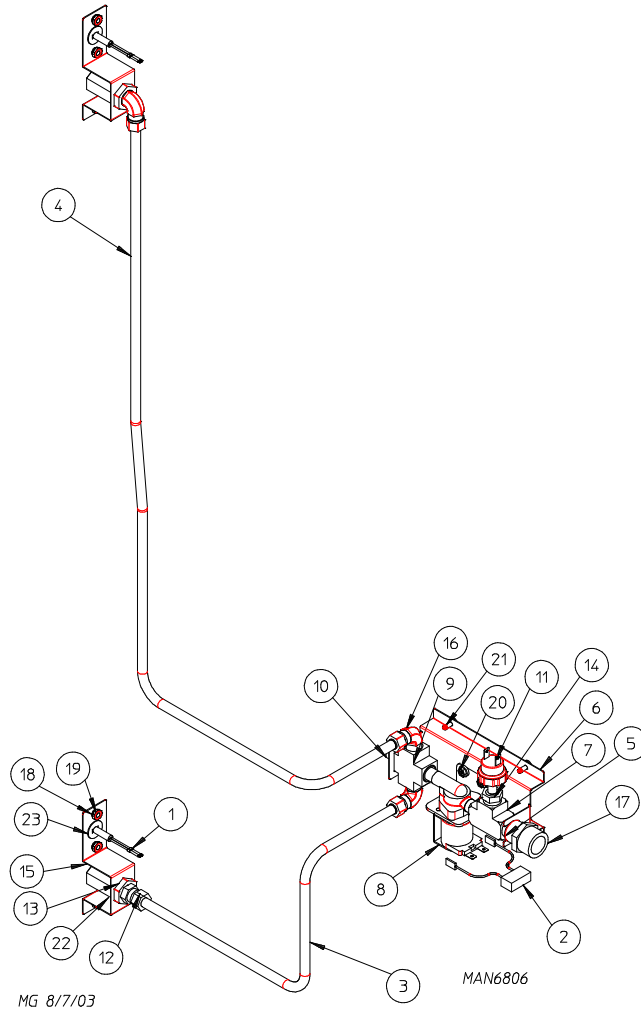
MAN6831

<u>Illus. No.</u>	<u>Part No.</u>	<u>Qty.</u>	<u>Description</u>
1	103500	4	Leveling Legs
2	360150	2	Flat Back Guard
3	150300	12	#10-16 x 1/2" TEK Screw
4	354261	3	Flexible Gas Line Bracket
5	854181	2	Rear Left Side Panel Support Assembly
6	360109	1	Gas Line Hole Cover
7	143118	1	1/2" x 1/2" x 60" Stainless Steel Flex Hose
8	143498	1	10" Diameter Duct Transition



<u>Illus. No.</u>	<u>Part No.</u>	<u>Qty.</u>	<u>Description</u>
1	102310	4	Wrapper Gasket (sold by the foot)
	401010	1	3M Mastic
2	860045	1	Left Wrapper Assembly
3	860044	1	Right Wrapper Assembly
4	860069	1	Top and Bottom Temperature Sensor Assembly
5	360149	1	60° Spray Nozzle Mount
6	852319	1	Axial Sensor Probe Assembly
7	354243	1	Inner Back Cover Plate
8	360155	1	Left Side Air Blockage Plate
9	360153	1	Right Side Air Blockage Plate

S.A.F.E. System Assembly



<u>Illus. No.</u>	<u>Part No.</u>	<u>Qty.</u>	<u>Description</u>
1	860069	2	Top and Bottom Temperature Sensor Assembly
2	824081	1	R.C. Network Assembly
3	143099	1	3/8" O.D. Copper Tubing
4	143099	1	3/8" O.D. Copper Tubing
5	143241	1	3/8" Close Brass Nipple
6	360148	1	S.A.F.E. Valve Mounting Bracket
7	143220	1	3/8" F.P.T. Brass Tee
8	165114	1	S.A.F.E. Solenoid Valve
9	143236	1	3/8" Brass Pipe Cross
10	143251	1	3/8" M.P.T. Brass Plug
11	136987	1	Water Jet Pressure Switch
12	143208	1	3/8" x 3/8" M.P.T. Brass Elbow
13	143303	2	3/8" N.P.T Brass Lock Nut
14	143315	1	Brass Bushing
15	143585	2	60° S.A.F.E., 3 gal/min, 3/8" N.P.T. Spray Nozzle
16	143320	3	3/8" M.P.T. Brass Elbow
17	142888	1	1/2" M.P.T. x 3/8" F.P.T. Hex Bushing
18	153024	6	#10 Split Lock Washer
19	152008	6	#10-32 Hex Nut
20	150309	2	#10-16 x 1/2" Hex Head TEK Screw
21	154210	4	5/32" x 3/16" Pop Rivet
22	360149	2	60° Spray Nozzle Mount
23	154007	4	1/4" Push-On Fastener

