



MLG32PDA  
Parts Manual  
(ADG-435)  
1995 through 1998

---

---

**For Internal Use Only**

---

---

**RETAIN THESE INSTRUCTIONS IN A SAFE PLACE  
FOR FUTURE REFERENCE**

**Whirlpool Corporation**  
Commercial Laundry  
Benton Harbor, MI 49022  
1-800-662-3587

# Retain This Manual In A Safe Place For Future Reference

This product embodies advanced concepts in engineering, design, and safety. If this product is properly maintained, it will provide many years of safe, efficient, and trouble free operation.

**ONLY qualified technicians should service this equipment.**

**OBSERVE ALL SAFETY PRECAUTIONS** displayed on the equipment or specified in the installation manual included with the dryer.

The following “**FOR YOUR SAFETY**” caution must be posted near the dryer in a prominent location.

## FOR YOUR SAFETY

Do not store or use gasoline or other flammable vapors and liquids in the vicinity of this or any other appliance.

## POUR VOTRE SÉCURITÉ

Ne pas entreposer ni utiliser d'essence ni d'autres vapeurs ou liquides inflammables à proximité de cet appareil ou de tout autre appareil.

We have tried to make this manual as complete as possible and hope you will find it useful. The manufacturer reserves the right to make changes from time to time, without notice or obligation, in prices, specifications, colors, and material, and to change or discontinue models.

## Important

For your convenience, log the following information:

DATE OF PURCHASE \_\_\_\_\_ MODEL NO. MLG32PDA

DISTRIBUTOR'S NAME \_\_\_\_\_

Serial Number(s) \_\_\_\_\_

For replacement parts, contact the distributor from which the dryer was purchased or contact:

**Whirlpool Corporation**  
Commercial Laundry  
Benton Harbor, MI 49022  
1-800-662-3587

The illustrations on the following pages may not depict your particular dryer exactly. The illustrations are a composite of the various dryer models. Be sure to check the descriptions of the parts thoroughly before ordering.

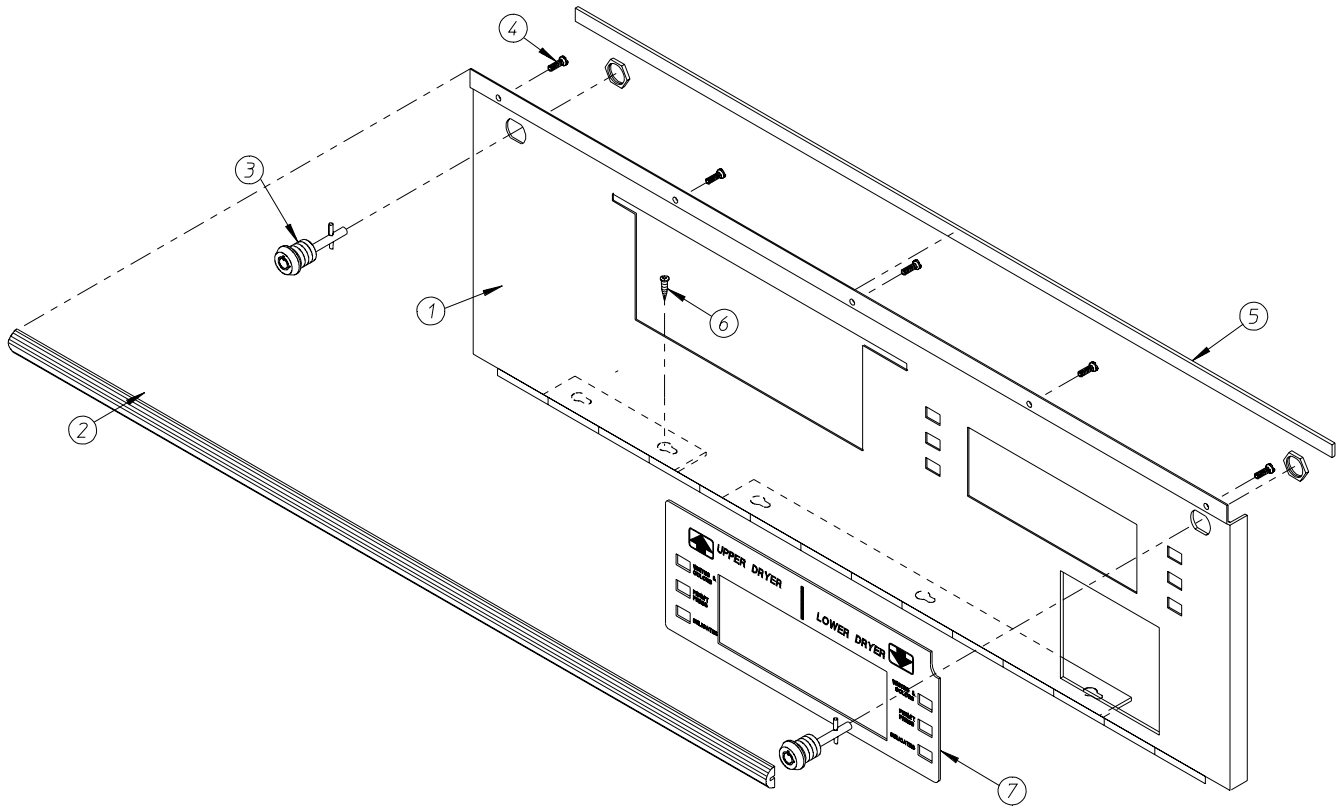
## **“IMPORTANT NOTE TO PURCHASER”**

Information must be obtained from your local gas supplier on the instructions to be followed if the user smells gas. These instructions must be posted in a prominent location near the dryer.

# Table of Contents

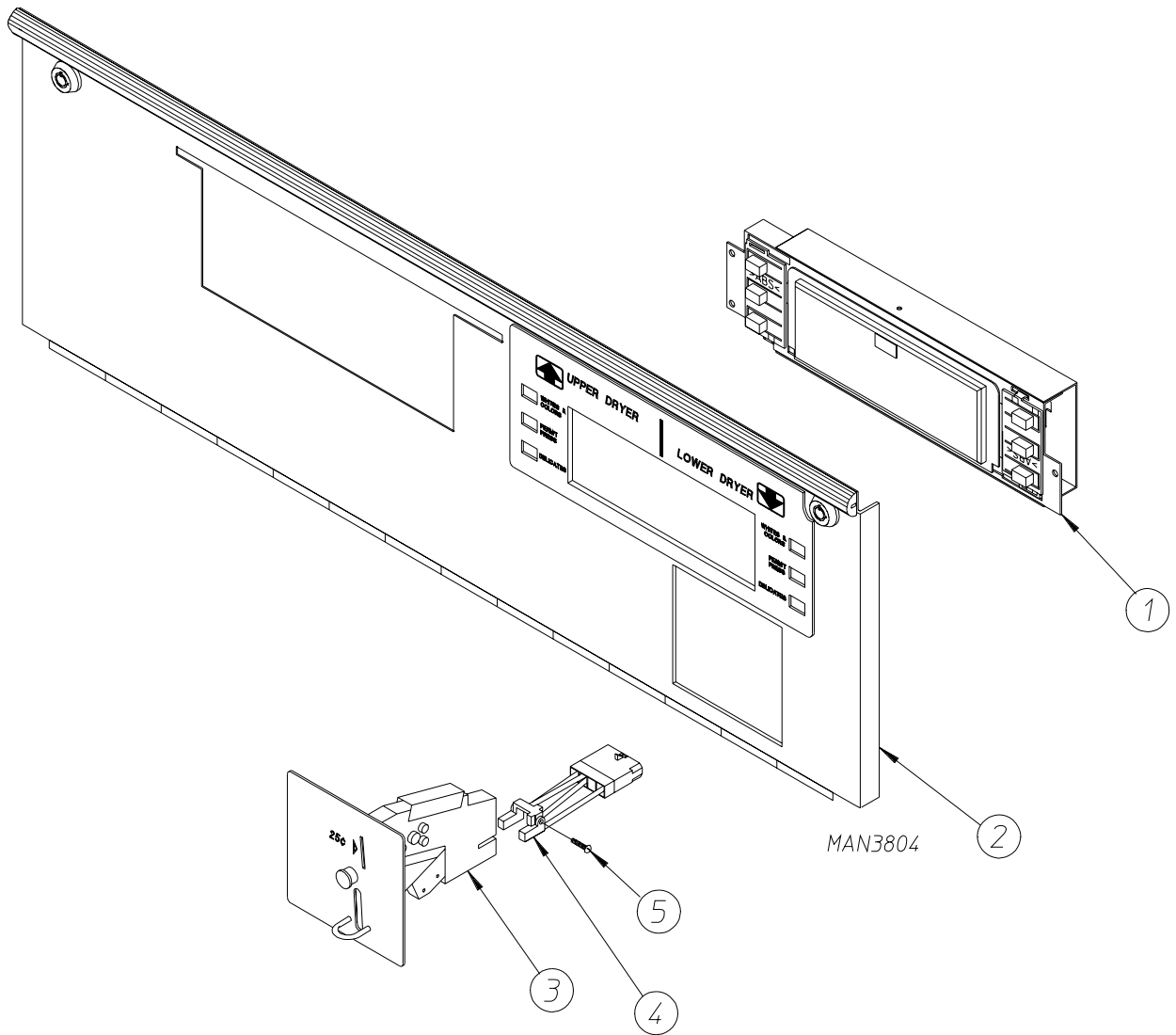
Control Door Assembly .....	4
Main Computer Assembly .....	5
Microprocessor (Computer) Assembly .....	6
Control Box Assembly .....	7
Upper Front Panel Assembly .....	8
Lower Front Panel Assembly .....	9
Coin Vault Assembly .....	10
Main Door Switch Assembly .....	11
Lint Door Assembly .....	12
Locking Lint Drawer (Basket) Assembly .....	13
Lint Drawer (Basket) Switch Assembly .....	14
Tumbler and Support Assembly .....	15
Temperature Sensor Bracket Assembly .....	16
Tumbler Bearing Assembly .....	17
Idler Bearing Assembly .....	18
Gas Valve Train Assembly .....	20
Motor and Mount Assembly .....	22
Burner Box / Piping Assemblies .....	24
Sail Switch Assembly .....	25
Exhaust Ducting Assembly .....	26
Back Guard Assembly .....	27

# Control Door Assembly



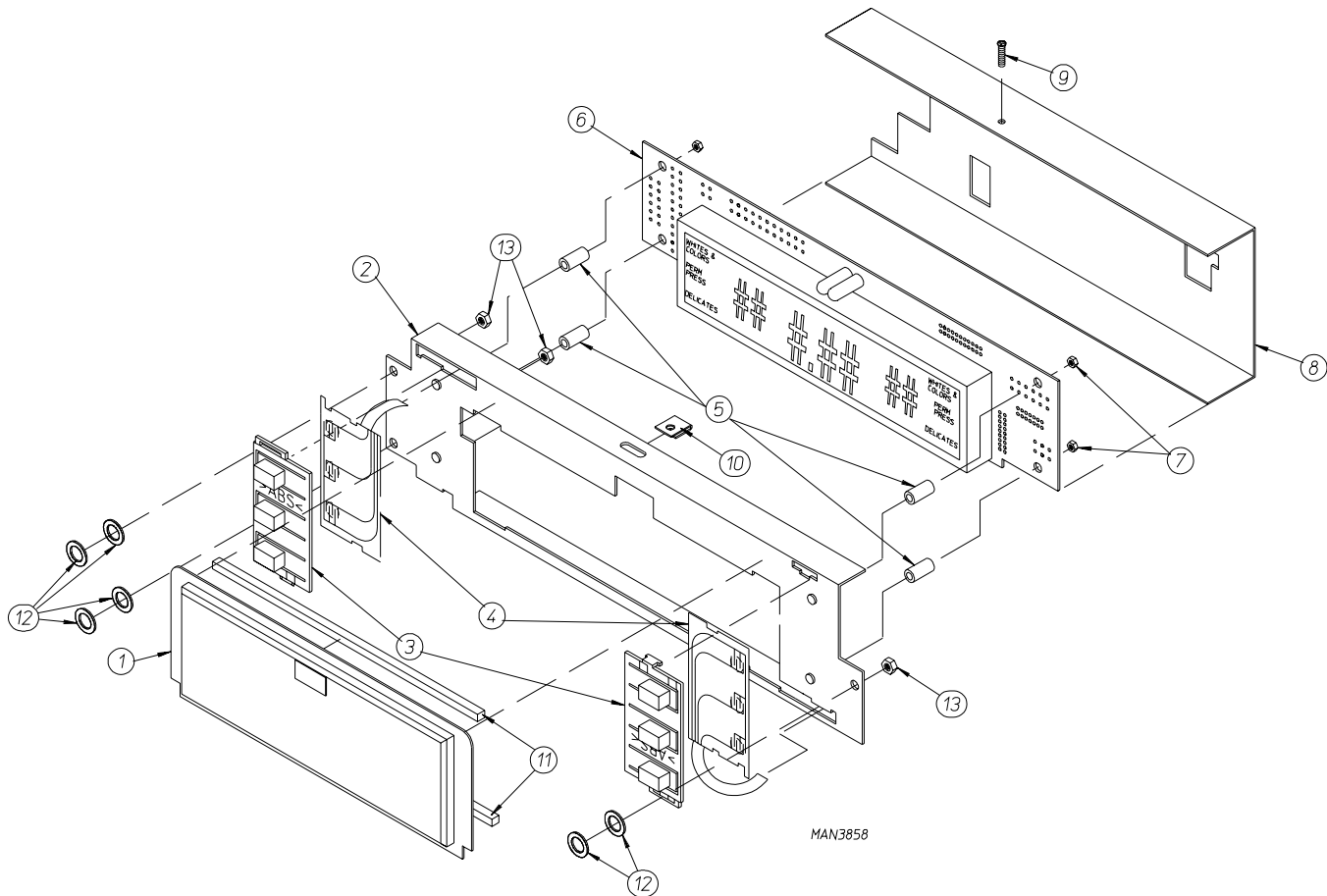
MAN3806

<u>Illus. No.</u>	<u>Part No.</u>	<u>Qty.</u>	<u>Description</u>
1	881977	1	White Hinged Control Door Assembly (includes illus. nos. 1, 2, 4, 5, and 7)
	881978	1	Beige Hinged Control Door Assembly (includes illus. nos. 1, 2, 4, 5, and 7)
2	180224	1	Control Door Top Trim (29-5/8" Long)
3	160040	2	DP Control Door Lock
4	150201	5	#10-32 x 1/4" Phillips Pan Head Screw
5	117605	3	1/4" x 3/8" Noise Suppressor Tape
6	150301	5	#8-18 x 7/16" Phillips Pan Head Screw
7	114075	1	Control Display Label

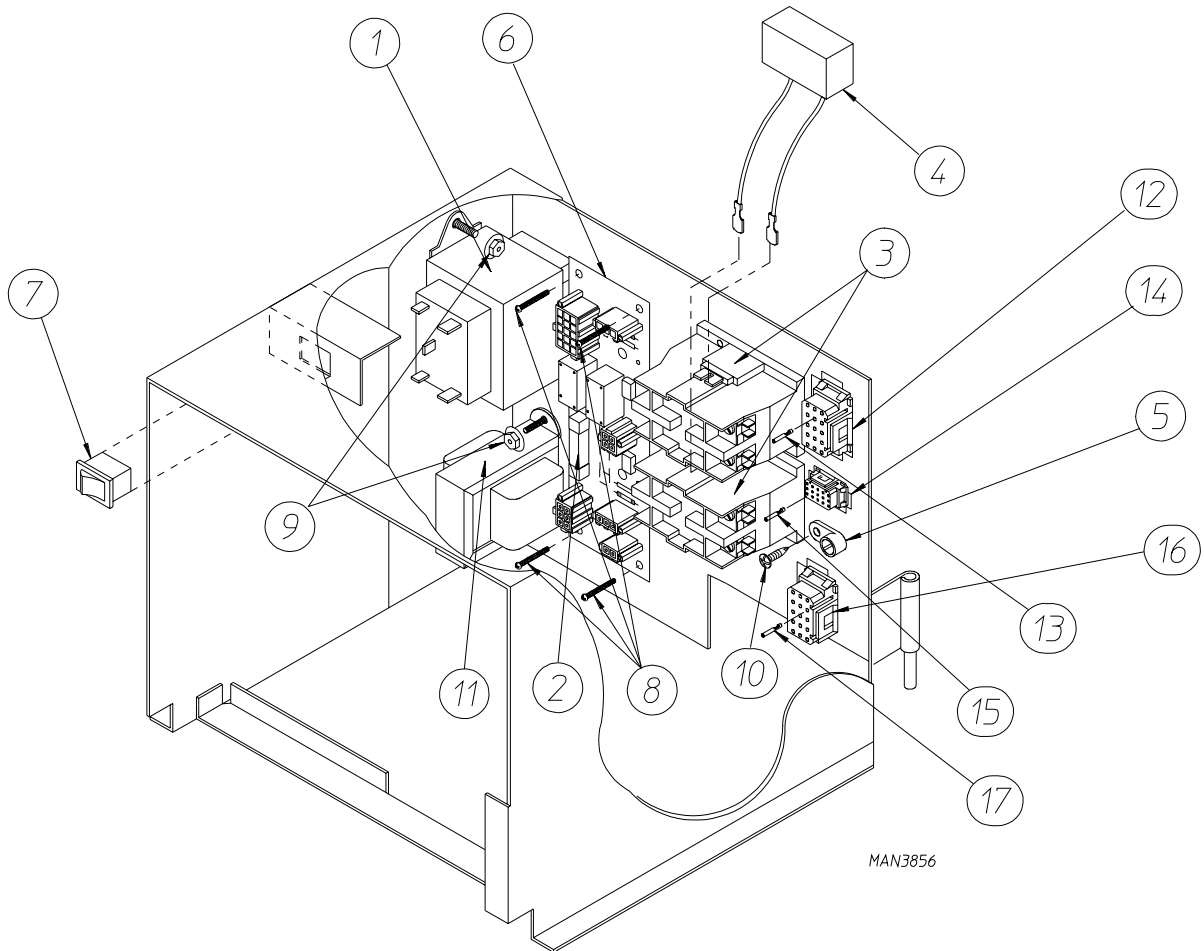


<u>Illus. No.</u>	<u>Part No.</u>	<u>Qty.</u>	<u>Description</u>
1	—	1	Microprocessor (Computer) Assembly <b>(refer to Microprocessor [Computer] Assembly on page 6)</b>
2	—	1	Control Door Assembly <b>(refer to Control Door Assembly on page 4)</b>
3	881935	1	Hanke 25¢ Coin Acceptor Assembly (includes illus. nos. 3 through 5)
4	125157	1	Optic Switch ONLY for Hanke 25¢ Coin Acceptor
5	150002	1	#6-32 x 1" Phillips Round Head Machine Screw

# Microprocessor (Computer) Assembly



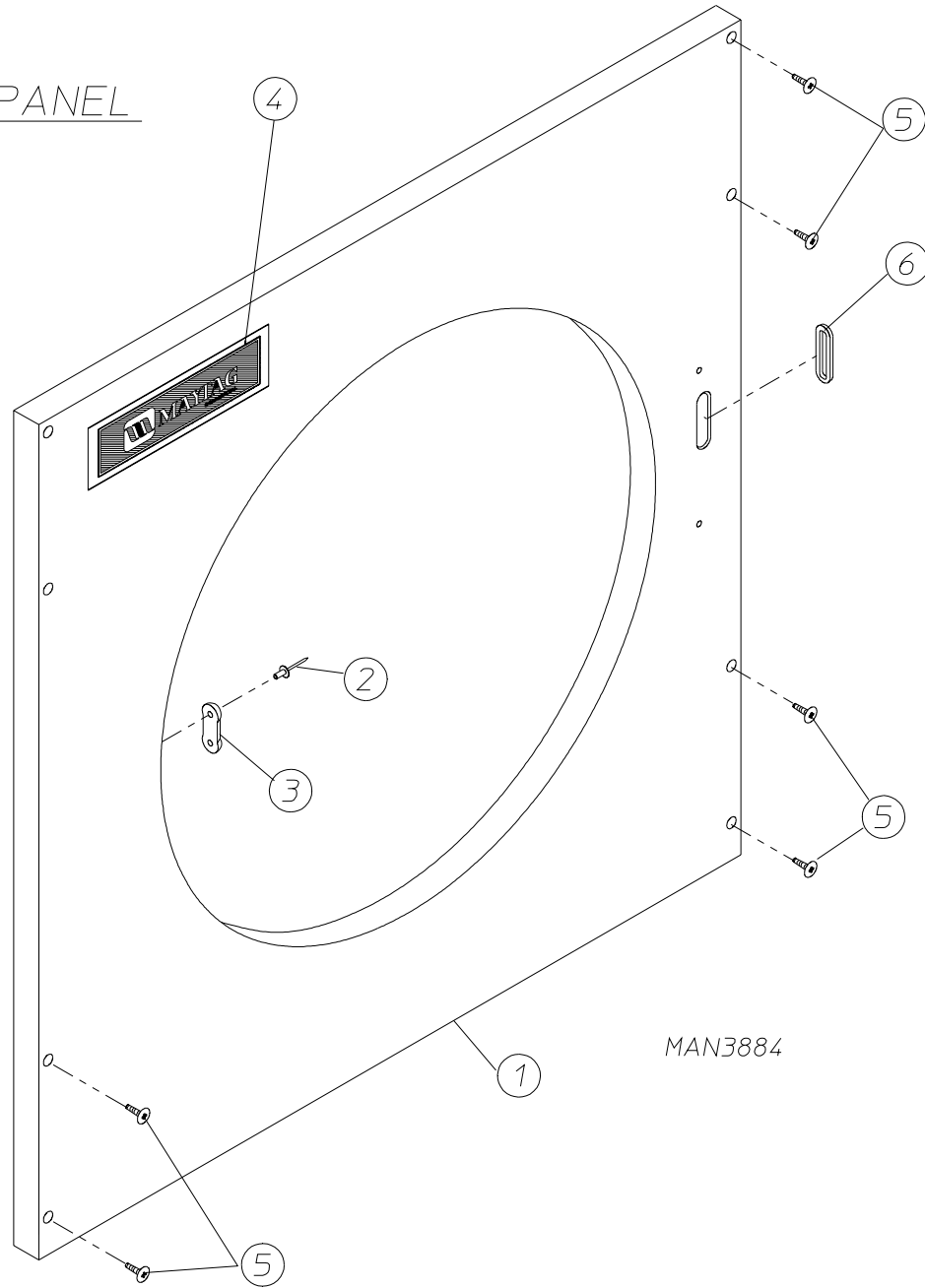
Illus. No.	Part No.	Qty.	Description
1	112543	1	Microprocessor Display Lens
2	800937	1	Microprocessor Mounting Panel
3	112544	2	Membrane Switch Push Button
4	112541	2	Molex Membrane Switch
5	154334	4	1/2" x 1/4" Nylon Stand Off
6	137244	1	Microprocessor (Computer) Board ONLY (for models mfd. as of April 28, 1998)
	882026	1	Microprocessor (Computer) Board with Lens (Serial No. 828138) (includes illus. nos. 1 through 6) (for models mfd. prior to April 28, 1998)
7	152013	4	#6-32 x 1/4" Hex Nut
8	311514	1	Microprocessor (Computer) Board Cover
9	150310	1	#8 Phillips Pan Head "Type A" Screw
10	154008	1	Tinnerman "U" Clip
11	117605	1	Neoprene Sponge Tape (sold by the foot)
12	153022	6	#10 Steel Burr
13	152001	3	#8-32 Hex Nut



<u>Illus. No.</u>	<u>Part No.</u>	<u>Qty.</u>	<u>Description</u>
1	132068	1	Multi-Tap Transformer Assembly
2	136057	1	1/2-Amp Slo-Blo Fuse
3	132451	2	2 Pole Motor Contactor
4	824828	2	RC Network with Connectors
5	121010	1	L-70 Ground Lug
6	137241	1	Interconnect Board
7	122401	1	SPST Rocker Switch
8	150005	4	#6-32 x 1/4" Phillips Lead Screw
9	151001	4	#8-32 Pal Nut
10	150300	3	Self-Tapping Hex Head Screw
11	821982	1	25V Micro Transformer Assembly
12	122626	1	15-Pin Female Connector
13	122705	15	Socket
14	122631	1	6-Position Connector
15	122705	6	Socket
16	122626	1	15-Pin Connector
17	122705	15	Socket

# Upper Front Panel Assembly

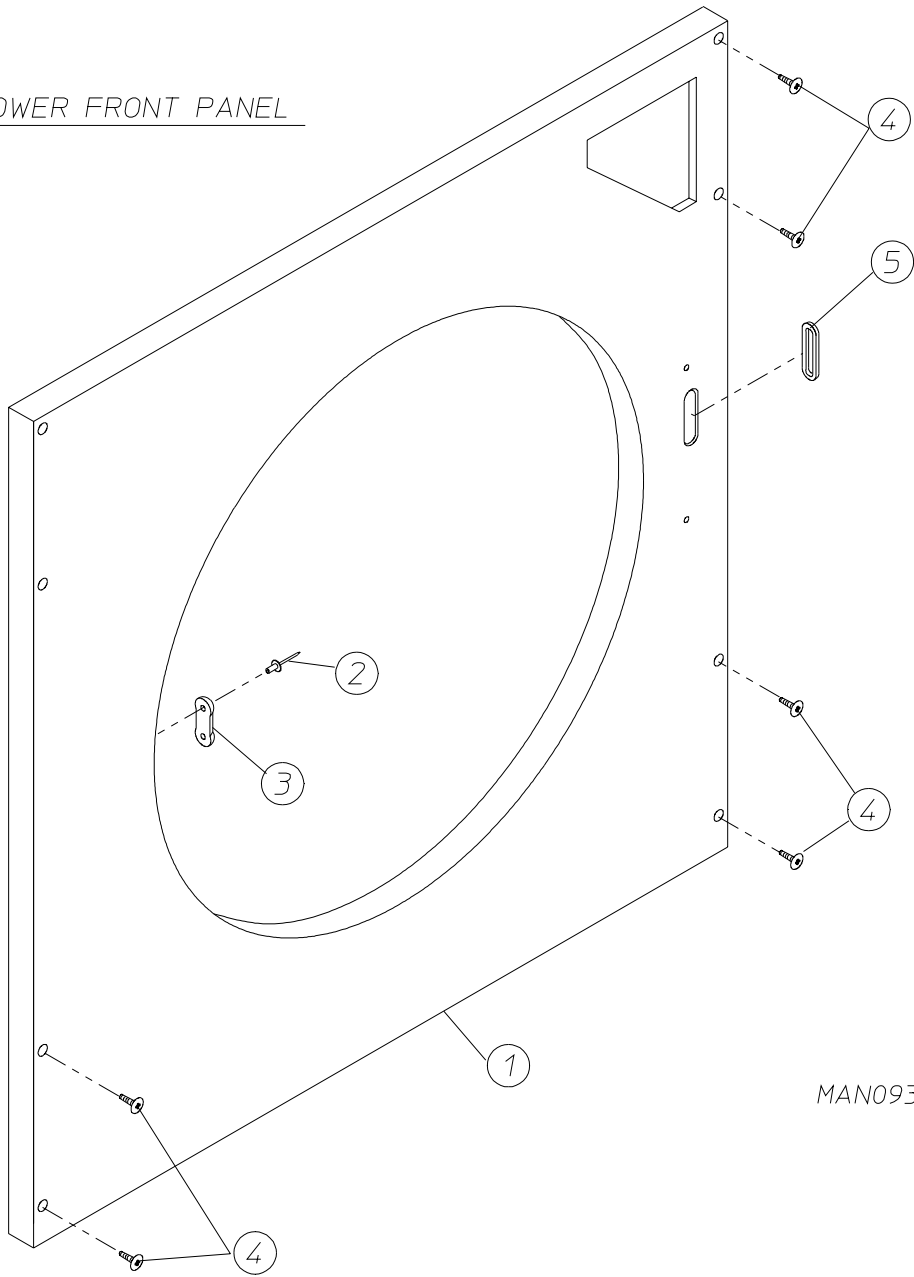
UPPER FRONT PANEL



<u>Illus. No.</u>	<u>Part No.</u>	<u>Qty.</u>	<u>Description</u>
1	881973	1	White Upper Front Panel without Hinge (includes illus. nos. 1 through 3 and 6)
	881974	1	Beige Upper Front Panel without Hinge (includes illus. nos. 1 through 3 and 6)
2	154215	2	1/8" Pop Rivet
3	170330	1	Friction Door Latch
4	882027	1	Maytag Logo with Tape
5	130415	8	#10-16 x 1/2" Phillips Round Head Screw
6	121405	1	Rubber Grommet



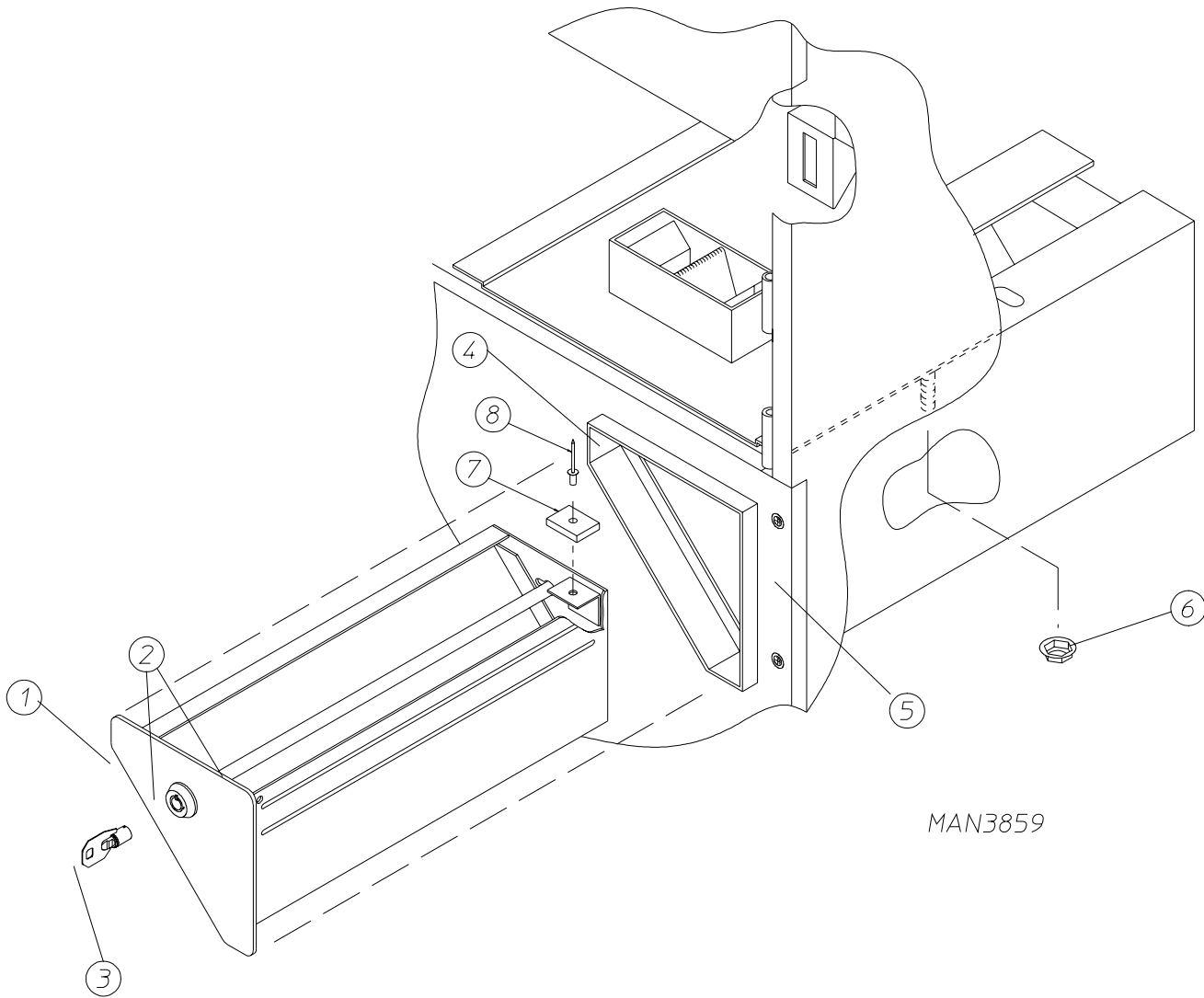
LOWER FRONT PANEL



MAN0936

<u>Illus. No.</u>	<u>Part No.</u>	<u>Qty.</u>	<u>Description</u>
1	800689	1	White Lower Front Panel Assembly Complete without Hinge (includes illus. nos. 1 through 3 and 5)
	800690	1	Beige Lower Front Panel Assembly Complete without Hinge (includes illus. nos. 1 through 3 and 5)
2	154215	2	1/8" Pop Rivet
3	170330	1	Friction Door Latch
4	150309	9	#10-16 x 1/2" Phillips Hex Head TEK Screw
5	121405	1	Rubber Grommet

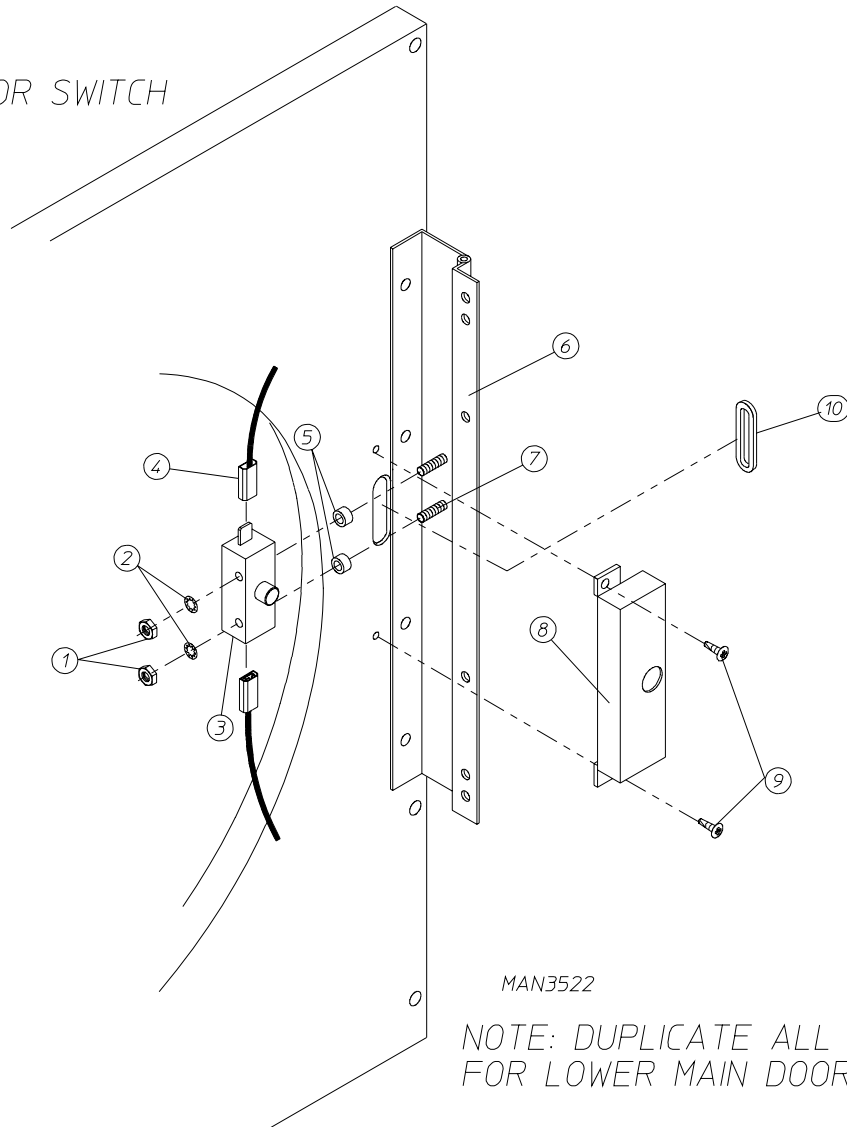
# Coin Vault Assembly



MAN3859

<u>Illus. No.</u>	<u>Part No.</u>	<u>Qty.</u>	<u>Description</u>
1	881981	1	White Coin Box Assembly ONLY Less Lock
	881982	1	Beige Coin Box Assembly ONLY Less Lock
	882028	1	White Coin Box Faceplate ONLY
	882029	1	Beige Coin Box Faceplate ONLY
2	160036	1	Ace® Lock Assembly with Key
3	160136	1	Ace® Key ONLY
4	881975	1	White Coin Vault ONLY
	881976	1	Beige Coin Vault ONLY
5	—	1	Lower Front Panel Assembly <b>(refer to Lower Front Panel Assembly on page 9)</b>
6	152014	4	1/4-20 Free Spin Wash Nut
7	102103	1	1" x 3/4" x 3/16" Magnet
8	154200	1	5/32" Pop Rivet

UPPER MAIN DOOR SWITCH

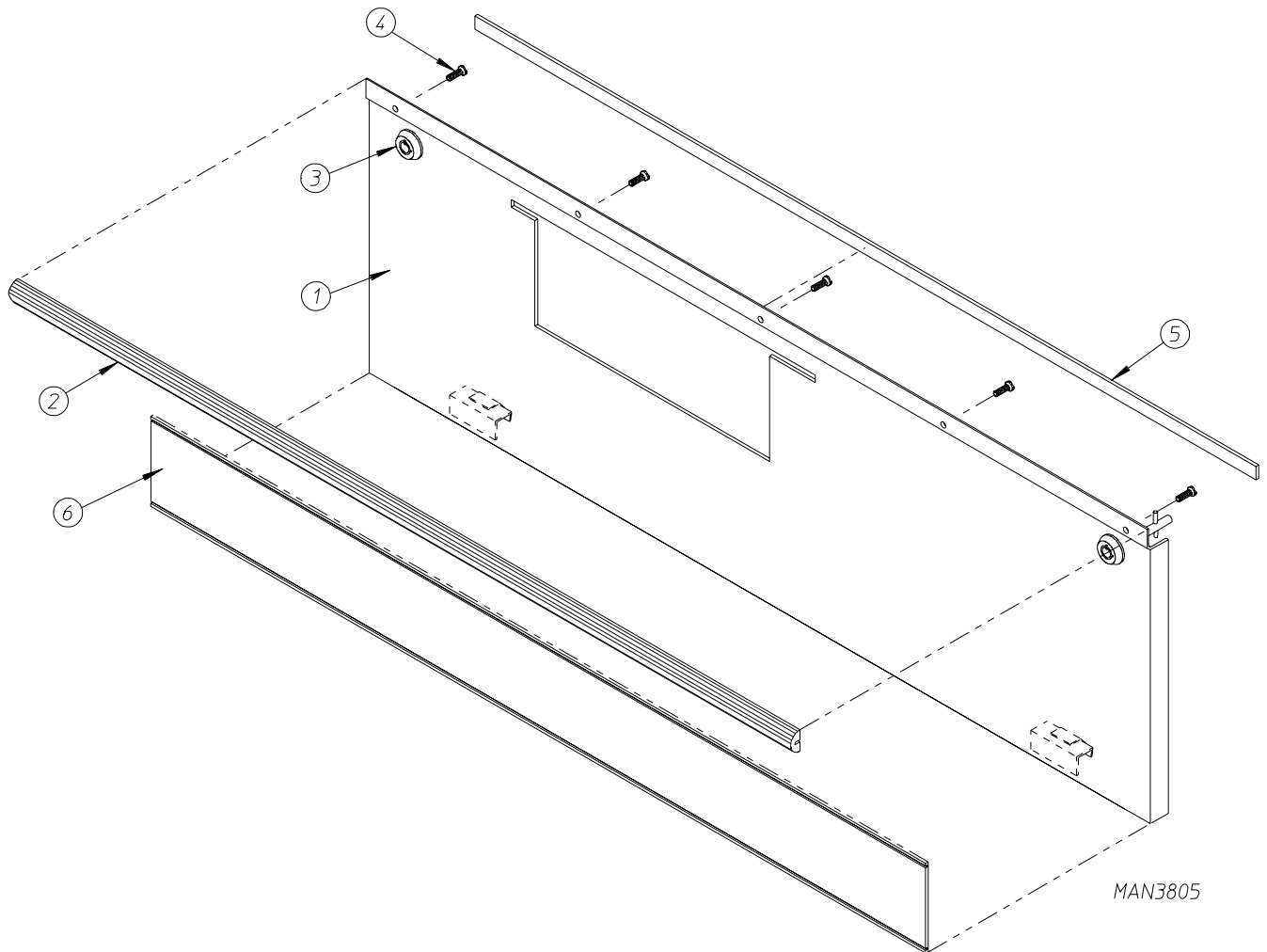


MAN3522

NOTE: DUPLICATE ALL COMPONENTS FOR LOWER MAIN DOOR SWITCH

Illus. No.	Part No.	Qty.	Description
1	152013	2	#6-32 Hex Nut
2	153008	2	#6 Lock Washer
3	137005	1	Single Pole Door Switch
4	121028	2	Insulated Female Terminal
5	154281	2	3/8" Standard Nylon Spacers
6	800448	1	12-1/2" Stainless Steel Main Door Hinge
7	153565	2	#6 Stud
8	881246	1	Main Door Switch Housing ONLY
9	150201	2	#10-32 x 1/4" Phillips Pan Head Screw
10	121405	1	Rubber Grommet

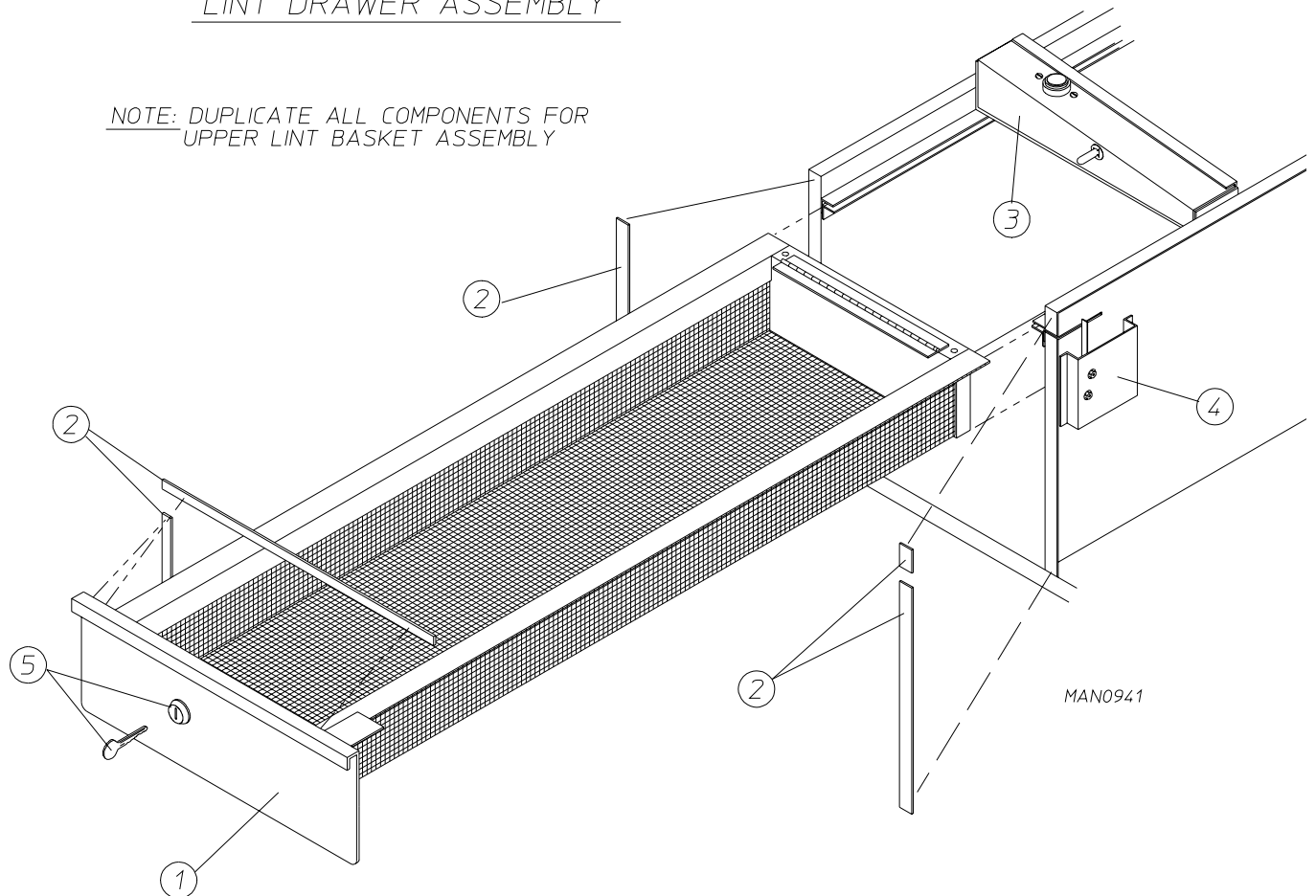
# Lint Door Assembly



<u>Illus. No.</u>	<u>Part No.</u>	<u>Qty.</u>	<u>Description</u>
1	881979	1	White Lint Door Assembly Complete (includes illus. nos. 1, 2, and 4 through 6)
	881980	1	Beige Lint Door Assembly Complete (includes illus. nos. 1, 2, and 4 through 6)
2	180224	1	Lint Door Top Trim (29-5/8" Long)
3	160040	1	DP Control Door Lock
4	150201	5	#10-32 x 1/4" Phillips Pan Head Screw
5	117602	3	1/4" x 3/8" Noise Suppressor Tape
6	180229	1	Black Kick Trim

## LINT DRAWER ASSEMBLY

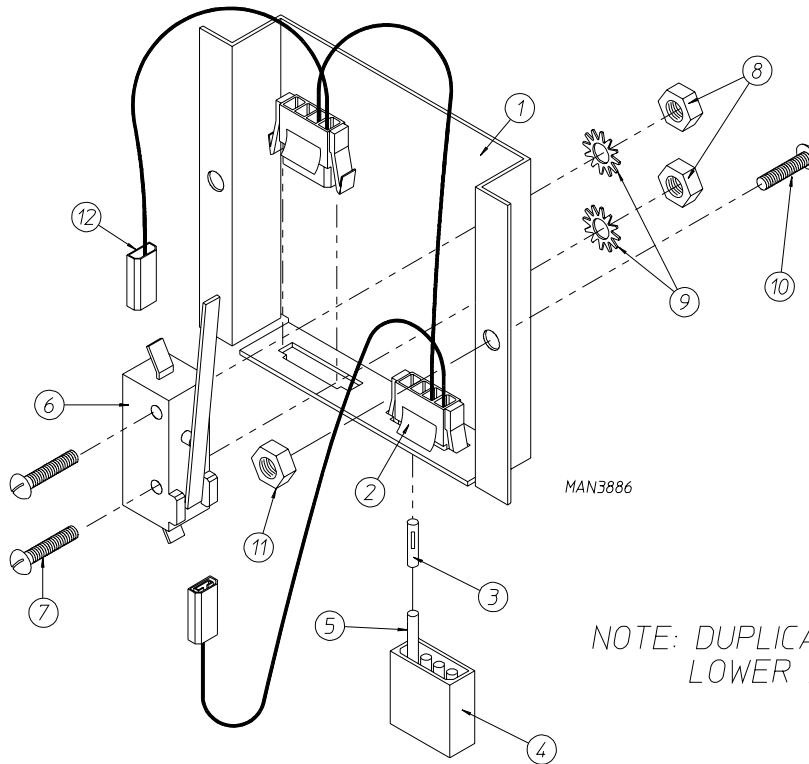
NOTE: DUPLICATE ALL COMPONENTS FOR  
UPPER LINT BASKET ASSEMBLY



<u>Illus. No.</u>	<u>Part No.</u>	<u>Qty.</u>	<u>Description</u>
1	800938	1	White Locking Lint Drawer (Basket) Assembly Complete Less Lock (includes illus. nos. 1 and 2)
	800939	1	Beige Locking Lint Drawer (Basket) Assembly Complete Less Lock (includes illus. nos. 1 and 2)
2	117600	3	Noise Suppressor Tape (sold by the foot)
3	—	1	Temperature Sensor Bracket <b>(refer to Temperature Sensor Bracket Assembly on page 16)</b>
4	—	1	Lint Drawer (Basket) Switch <b>(refer to Lint Drawer [Basket] Switch Assembly on page 14)</b>
5	160039	1	Lint Drawer Lock Assembly (Keyed to Number XX4451)
	160140	1	Key ONLY (Key Number XX4451)
	160034	1	Cam ONLY

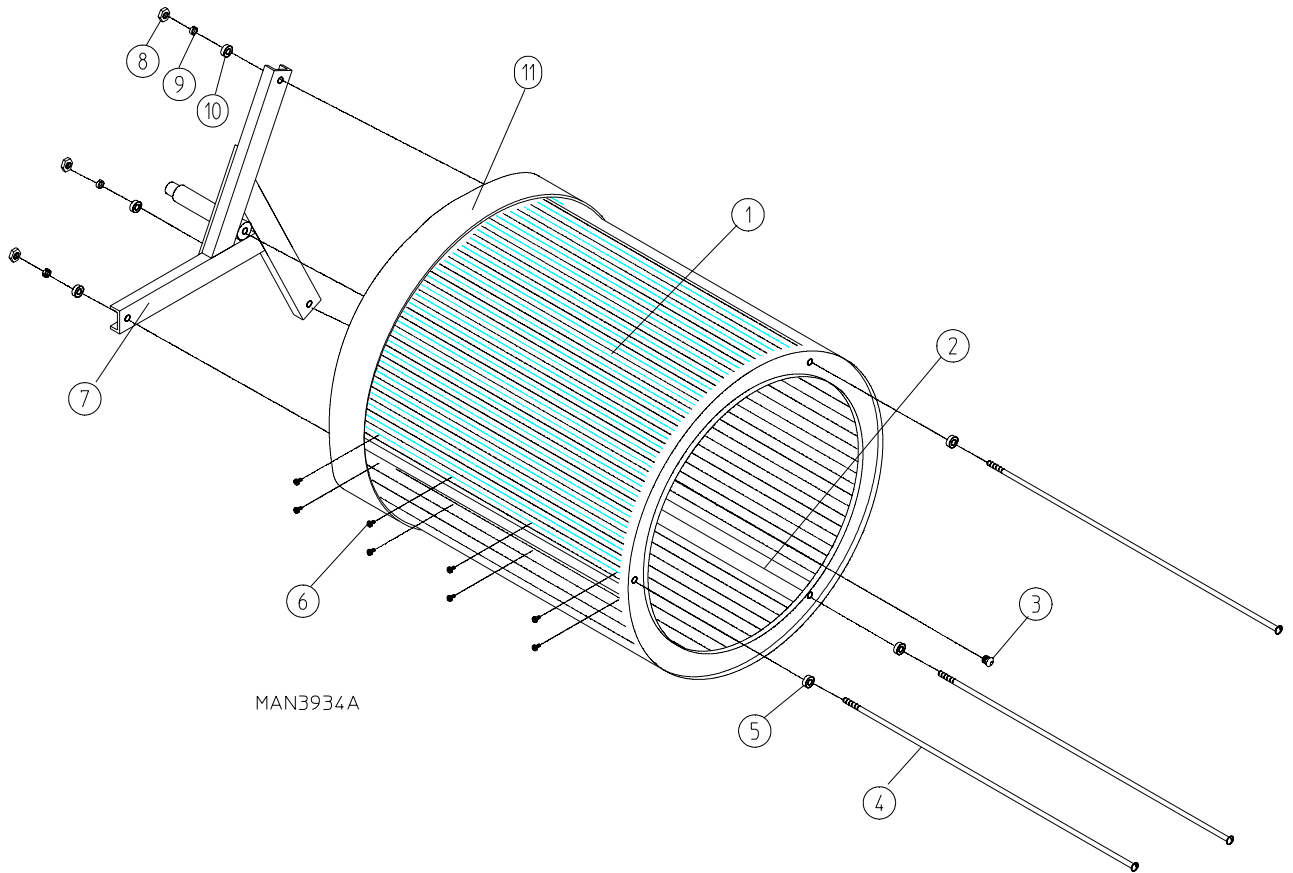
# Lint Drawer (Basket) Switch Assembly

## UPPER LINT BASKET SWITCH



NOTE: DUPLICATE ALL COMPONENTS FOR LOWER LINT BASKET SWITCH

Illus. No.	Part No.	Qty.	Description
1	304039	1	Lint Door Switch Bracket / Cover
2	122605	2	4-Pin Socket Connector ONLY
3	122701	8	Socket Terminal ONLY
4	122604	2	4-Pin Connector ONLY
5	122700	8	Pin Terminal ONLY
6	136992	1	Lint Drawer (Basket) Safety Switch ONLY
7	150002	2	#6-32 x 1" Round Head Machine Screw
8	152000	2	#6-32 Hex Nut
9	153010	2	#6 Star Washer
10	150001	2	#6-32 x 1/2" Phillips Lead Machine Screw
11	152013	2	#6-32 Hex Nut
12	121028	2	1/4 Insulated Terminal

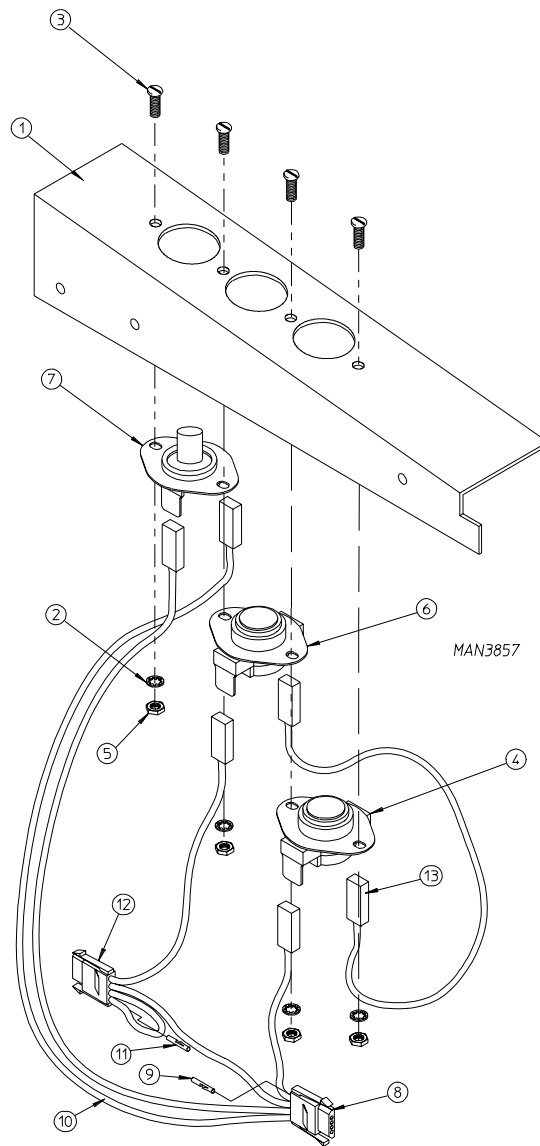


MAN3934A

Illus. No.	Part No.	Qty.	Description
1	800797	1	Tumbler and Support Assembly Complete (includes illus. nos. 1 through 3)
	800722	1	Tumbler without Felt Collar ONLY
2	301315	2	Short Tapered Rib
	301316	1	Tall Tapered Rib
3	150518	1	5/16" x 3/8" Socket Head Screw
4	100902	3	5/16" x 31" Tie Rod
5	153001	3	5/16" Flat Washer
6	150415	30	#10-16 x 1/2" Phillips Head Crimptite Screw
7	850064	1	Tumbler Support ONLY
8	152004	3	5/16" Hex Nut
9	153002	3	5/16" Lock Washer
10	153001	3	5/16" Flat Washer
11	116003	1	Felt Collar ONLY
	401010	*	Felt Collar Adhesive

\* As required.

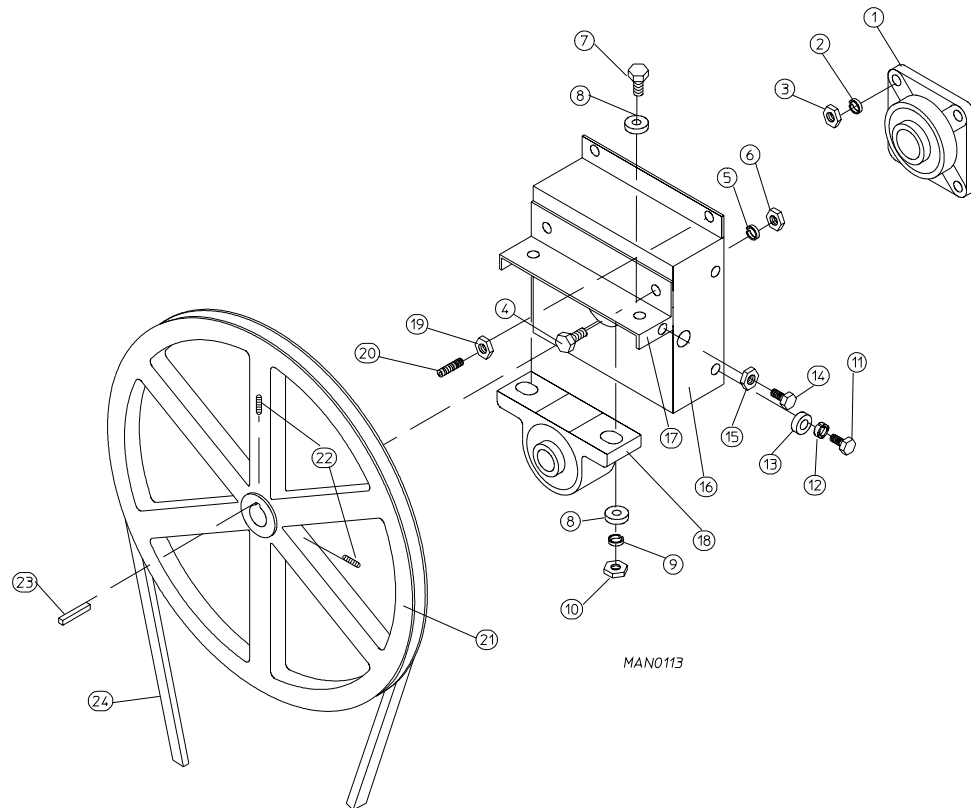
# Temperature Sensor Bracket Assembly



<u>Illus. No.</u>	<u>Part No.</u>	<u>Qty.</u>	<u>Description</u>
1	881970	1	Temperature Sensor Bracket Complete (includes illus. nos. 1 through 7)
	311505	1	Temperature Sensor Bracket ONLY
2	153010	4	#6 Star Washer
3	150005	4	#6-32 x 1/4" Round Head Machine Screw
4	130100	1	Large 150° Thermostat
5	152000	4	#6-32 Hex Nut
6	130111	1	Large 130° Thermostat
7	130115	1	Thermistor
	821987	1	Sensor Bracket Harness (Top)
	821988	1	Sensor Bracket Harness (Bottom)
8	122604	4	Pin Connector (Male)
9	122700	4	Male Pin (Top)
10	821987	1	Sensor Bracket Harness
	821988	1	Sensor Bracket Harness (Bottom)
11	122700	4	Male Pin
12	122604	4	Pin Connector (Male)
13	122636	4	Insulated Flag Terminal



# Tumbler Bearing Assembly

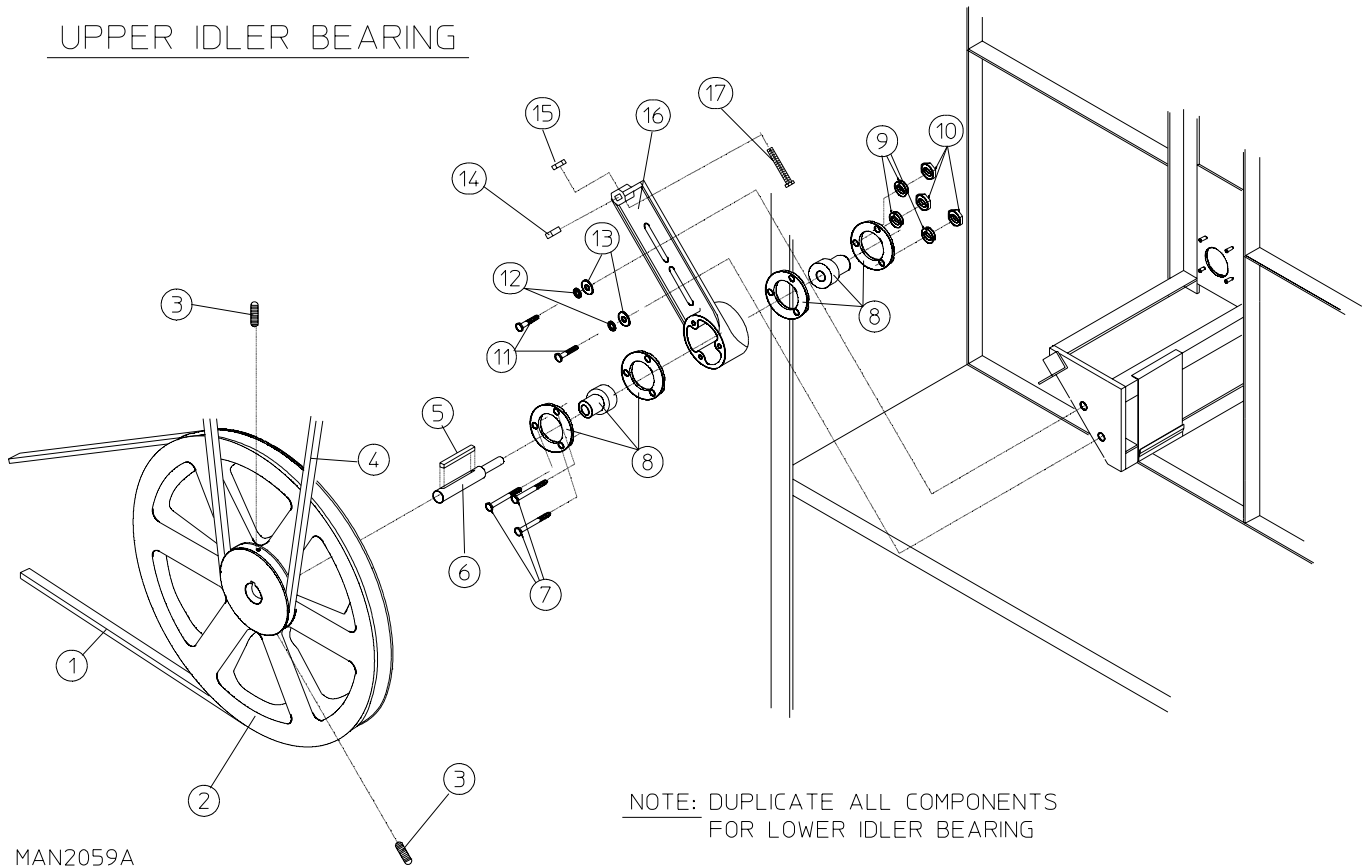


Illus. No.	Part No.	Qty.	Description
1	880203	1	1-3/8" Flange Bearing with Nylock Setscrew
2	153005	4	3/8" Lock Washer
3	152005	4	3/8-16 Hex Nut
4	150508	2	3/8-16 x 3/4" Hex Head Machine Bolt
5	153005	2	3/8" Lock Washer
6	152005	2	3/8-16 Hex Nut
7	150600	2	3/8-16 x 1/2" Hex Head Machine Bolt
8*	153004	2	3/8" Flat Washer
9	153005	2	3/8" Lock Washer
10	152005	2	3/8-16 Hex Nut
11	150501	4	5/16-18 x 3/4" Hex Head Machine Bolt
12	153002	4	5/16" Lock Washer
13	153001	4	5/16" Flat Washer
14	150621	2	5/16-18 x 1-1/2" Hex Head Machine Bolt
15	152004	2	5/16-18 Hex Nut
16	801101	1	1-3/8" Bearing Box Assembly Complete (includes illus. nos. 4 through 20)
	801103	1	1-3/8" Bearing Box and Support Assembly ONLY
	801105	1	1-3/8" Bearing Box ONLY
17	801104	1	1-3/8" Pillow Block Bearing Support ONLY
18	880202	1	1-3/8" Pillow Block Bearing ONLY
19	152004	2	5/16-18 Hex Nut
20	150610	2	5/16-18 x 1-1/2" Allen Setscrew
21	101100	1	18" Pulley
22	154301	2	5/16-18 x 5/16" Allen Setscrew
23	100713	1	1/4" x 1/4" x 7/8" Key
24	100100	1	5L650 V-Belt (to Idler Assembly)

\* Some models require a quantity of 4.

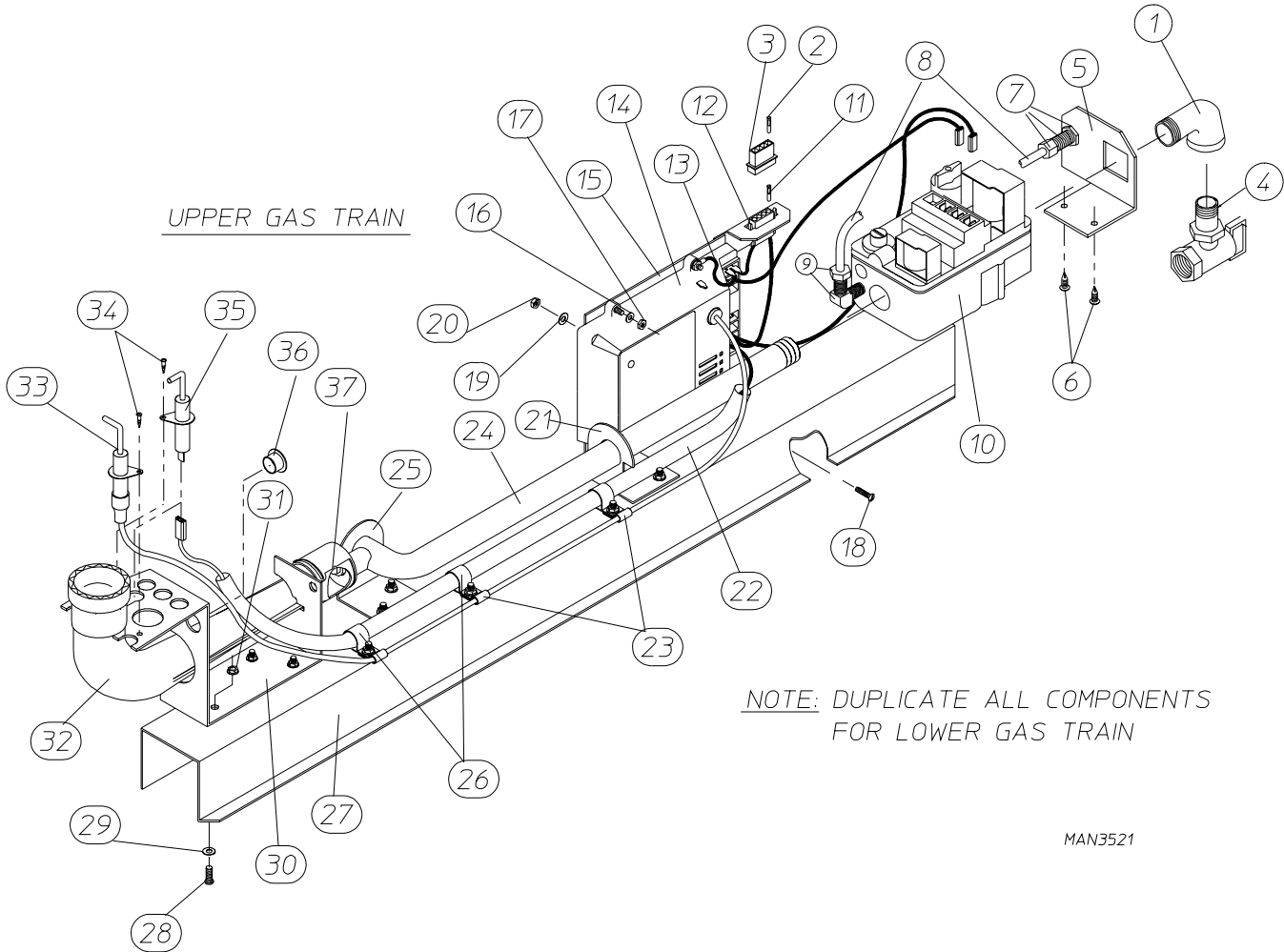
# Idler Bearing Assembly

## UPPER IDLER BEARING



<u>Illus. No.</u>	<u>Part No.</u>	<u>Qty.</u>	<u>Description</u>
1	100144	1	4L400 V-Belt (to Motor Mount Assembly)
2	101129	1	9" x 2-1/2", 3/16" Key, Pulley
3	154301	2	5/16-18 x 5/16" Allen Setscrew
4	100100	1	5L660 V-Belt (to Tumbler Bearing Assembly)
5	100705	1	3/16" x 3/16" x 1-3/8" Key
6	301850	1	5/8" x 3/4" Idler Shaft
7	150529	3	1/4-20 x 2-1/4" Carriage Bolt
8	100214	2	5/8" Flange Bearing
9	153007	3	1/4" Lock Washer
10	152002	3	1/4-20 Hex Nut
11	150617	2	3/8-16 x 1" Hex Head Machine Bolt
12	153005	2	3/8" Lock Washer
13	153004	2	3/8" Flat Washer
14	152020	1	5/16-18 Standard Square Nut
15	152004	1	5/16-18 Hex Nut
16	801010	1	Idler Bearing Assembly Complete (includes illus. nos. 6 through 17)
	100406	1	Idler Bearing Mounting Bracket ONLY
17	150509	1	5/16-18 x 3" Hex Head Machine Bolt

# Gas Valve Train Assembly

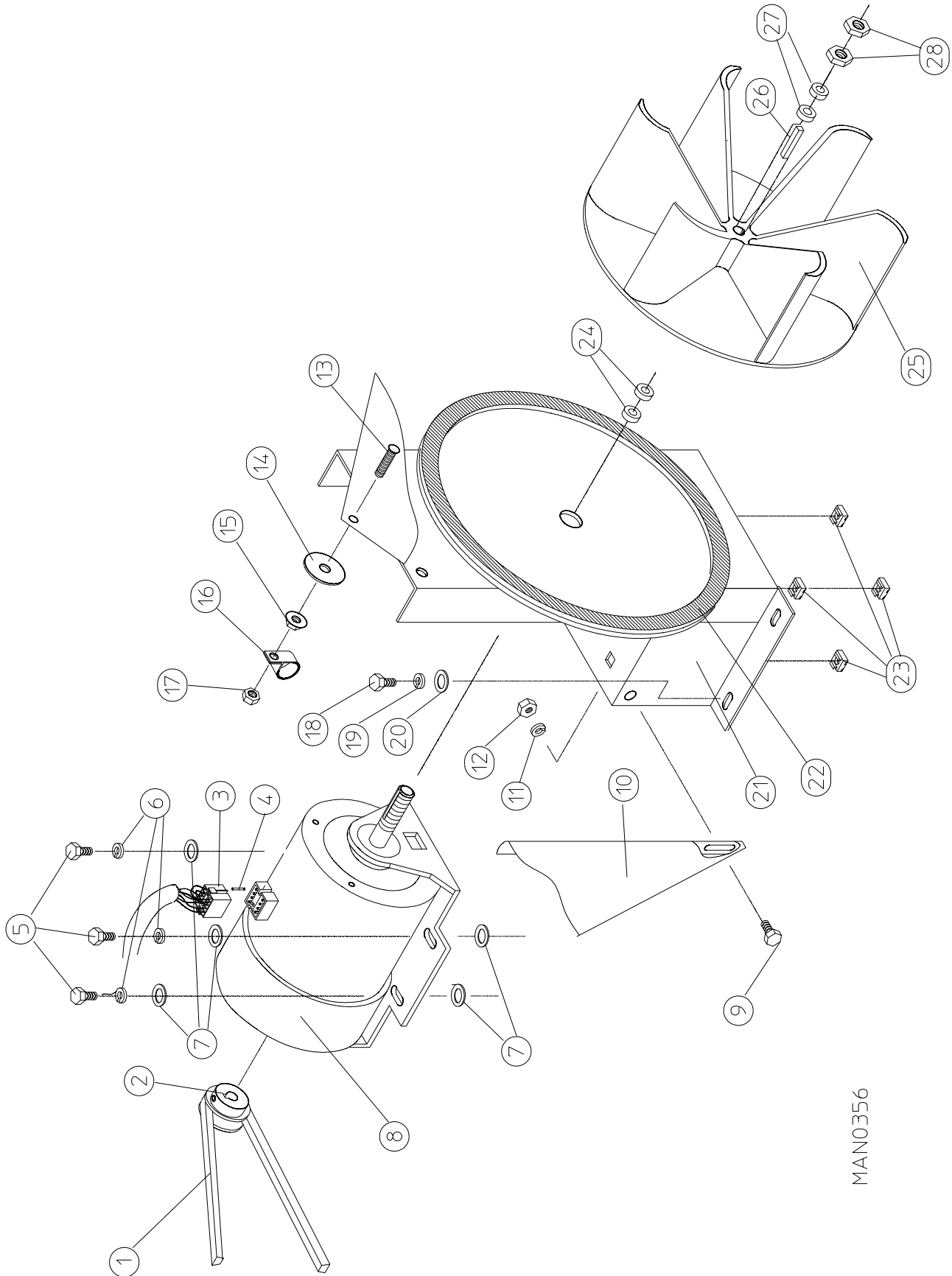


<u>Illus. No.</u>	<u>Part No.</u>	<u>Qty.</u>	<u>Description</u>
1	142506	1	1/2" x 1/2" Street Elbow
2	122700	2	Pin Terminal ONLY
3	122604	1	4-Pin Connector ONLY
4	881367	1	1/2" Union Shutoff with Tailpiece
5	318712	1	Gas Valve Pipe Bracket
6	150301	2	#8-10 x 7/16" Phillips Pan Head TEK Screw
7	143259	1	Bulkhead Fitting
8	143100	1	1/4" Aluminum Tubing (sold by the foot)
9	143203	1	90° Line Adapter
10	128927	1	1/2" 24 VAC Direct Spark Ignition Redundant (Natural Gas) Valve
		1	Direct Spark Ignition Liquid Propane (Gas Valve) Conversion Kit
11	122701	2	Socket Terminal ONLY
12	122605	1	4-Pin Socket Connector ONLY
	122801	1	Pin / Socket Extraction Tool
13	842716	1	Gas Valve Train Wiring (Top Gas Train)
	842724	1	Gas Valve Train Wiring (Bottom Gas Train)
14	880815	1	Direct Spark Ignition Module ONLY
15	850808	1	Direct Spark Ignition Module Mounting Bracket ONLY
16	153017	4	#6 Star Washer
17	151000	4	#6-32 Pal Nut
18	153528	2	#8-32 x 1/2" Self-Clinching Stud
19	153012	2	#8 Star Washer
20	152001	2	#8-32 Hex Nut
21	318711	1	Notched Pipe Bracket
22	121060	4	5/8" Clear Flexite
23	121492	3	3/16" Nylon Clamp
24	141225	1	Single-Port Manifold ONLY
25	318700	1	Pipe Bracket
26	121491	3	5/8" Nylon Clamp
27*	801022	1	(Natural Gas) Gas Valve Train Assembly Complete Less Orifice (includes illus. nos. 1 through 3 and 5 through 36)
	319522	1	Gas Valve Train Slide ONLY
28	153528	9	#8-32 x 1/2" Self-Clinching Stud
29	153012	16	#8 Star Washer
30	318009	1	Burner Tube Bracket (PSE)
31	151001	8	#8-32 Pal Nut
32	141130	1	Direct Spark Ignition Up-Shot Burner Tube ONLY
33	128917	1	Spark Electrode
34	150315	2	#6 x 3/8" Phillips
35	128918	1	Flame Sensor
36	121300	2	Open / Closed Bushing
37	140856	1	#23 Burner Orifice (Natural Gas) ONLY
	140810	1	#42 Burner Orifice (Liquid Propane) ONLY
	881936**	1	Direct Spark ignition Liquid Propane Conversion Kit

\* Orifice is not included and must be ordered separately.

\*\* Consult factory for elevations over 2,000 feet.

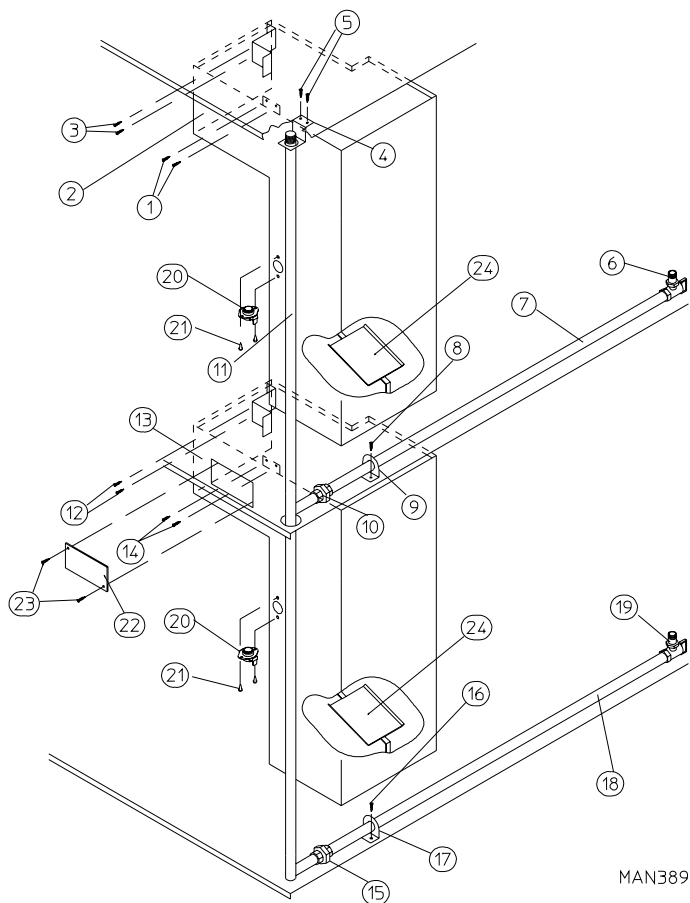
# Motor and Mount Assembly



MAN0356

<u>Illus. No.</u>	<u>Part No.</u>	<u>Qty.</u>	<u>Description</u>
1	100144	1	V-Belt to Idler Bearing Assembly (4L410)
2	101131	1	Motor Pulley (1/2" x 2-1/4")
3	137030	1	8-Spin Socket Connector
4	122701	6-8	Socket Terminal ONLY
	122801	1	Extraction Tool for Pins and Sockets
5	150501	4	5/16" x 3/4" Machine Bolt
6	153002	4	5/16" Lock Washer
7	153001	8	5/16" Flat Washer
8	100065	1	1/2 hp 120V / 230V 60 Hz Motor with Plug
9	150111	1	1/4" x 1/2" Round Head Machine Screw
10	311551	1	Idler Support Bracket
11	153007	1	1/4" Lock Washer
12	152002	1	1/4" Hex Nut
13	153525	1	1/4" x 1" Self-Clinching Stud
14	153003	1	3/8" x 1-1/2" Washer
15	152014	1	1/4" Free Spin Nut
16	121490	1	1/2" Nylon Clamp
17	152002	1	1/4" Hex Nut
18	150501	4	5/16" x 3/4" Machine Bolt
19	153002	4	5/16" Lock Washer
20	153001	4	5/16" Flat Washer
21	850019	1	1/2 hp Motor Mount ONLY
	803969	1	1/2 hp 120V / 230V Motor Mount Assembly (includes illus. nos. 2, 5 through 8, and 18 through 28)
22	117600	4	Noise Suppressor Tape (sold by the foot)
23	154000	4	5/16" Tinnerman Nut
24	153050	2	1/2" Flat Washer
25	100604	1	12-1/2" Impeller with 1/2" Bore
26	100702	1	1/8" x 1/8" x 1-1/2" Key
27	153050	2	1/2" Flat Washer
28	152006	2	1/2" Left-Hand Jam Nut

# Burner Box / Piping Assemblies

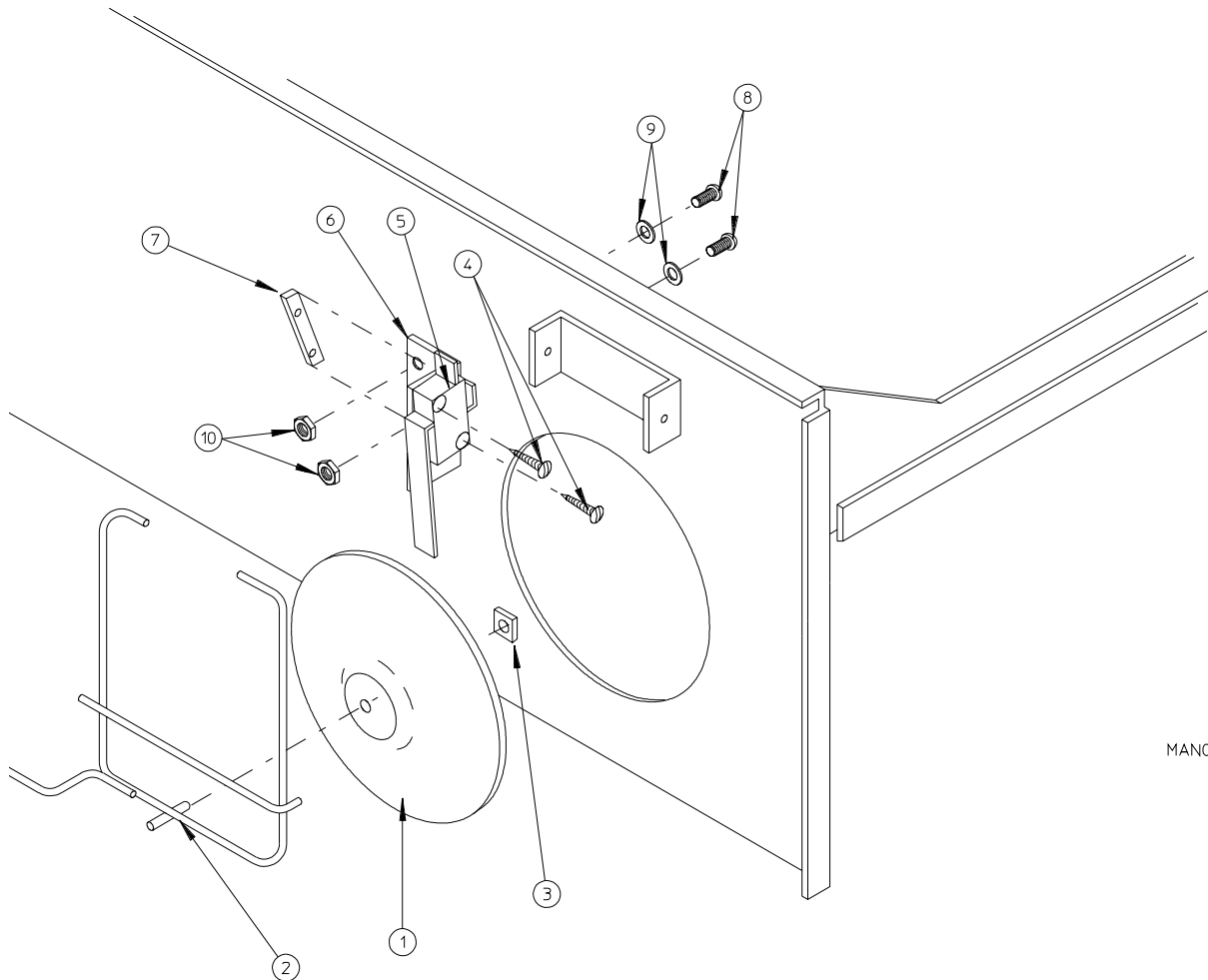


MAN3895

Illus. No.	Part No.	Qty.	Description
1	150301	2	#8-18 x 7/16" TEK Screw
2	880121	1	Burner Box with Spreader Assembly
3	150301	2	#8-18 x 7/16" TEK Screw
4	318702	1	Top Pipe Support Bracket
5	150300	2	#10 x 1/2" Hex Head TEK Screw
6	881367	1	1/2" Union Shutoff with Tailpiece
7	142823	2	1/2" x 40" Long Pipe
8	150300	2	#10 x 1/2" Hex Head TEK Screw
9	318700	1	Pipe Bracket
10	142600	1	1/2" Union
11	141237	1	Manifold Inlet
12	150301	2	#8-18 x 7/16" TEK Screw
13	880121	1	Burner Box with Spreader Assembly
14	150301	2	#8-18 x 7/16" TEK Screw
15	142600	1	1/2" Union
16	150300	2	#10 x 1/2" Hex Head TEK Screw
17	318700	1	Pipe Bracket
18	142823	1	1/2" x 40" Long Pipe
19	881367	1	1/2" Union Shutoff with Tailpiece
20	130401	2	330° Hi-Limit
21	150300	4	#10-32 x 1/2" Hex Head TEK Screw
22	318065	1	Burner Box Clean Out Cover
23	150300	4	#10-32 x 1/2" Hex Head TEK Screw
24	850912	1	Spreader Assembly ONLY



## UPPER SAIL SWITCH ASSEMBLY



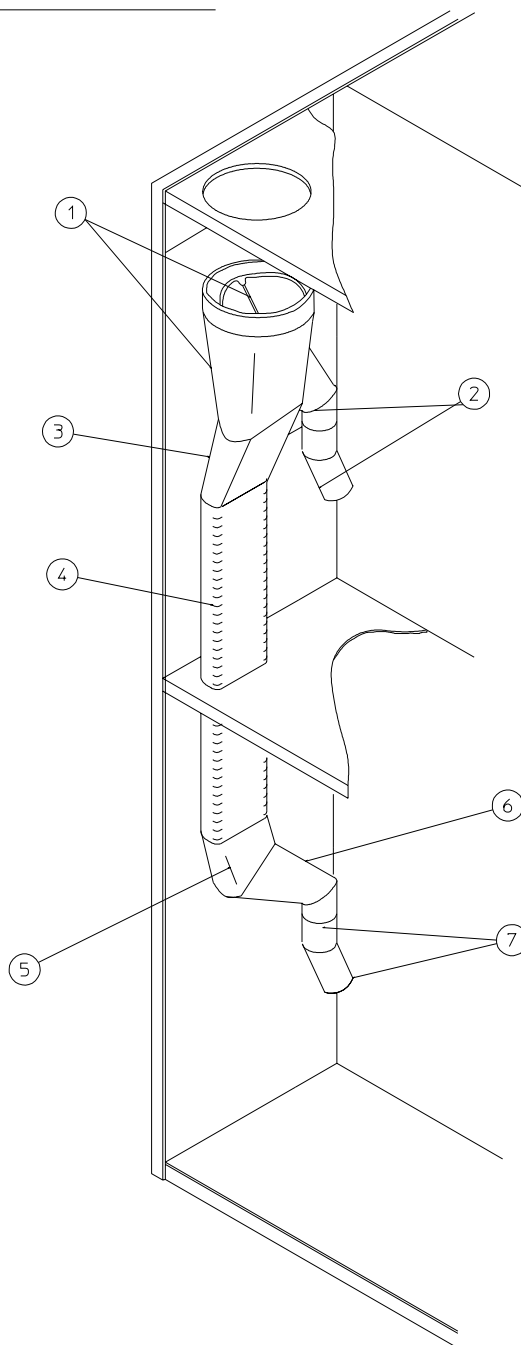
MAN0570

NOTE: DUPLICATE ALL COMPONENTS  
FOR LOWER SAIL SWITCH ASSEMBLY

<u>Illus. No.</u>	<u>Part No.</u>	<u>Qty.</u>	<u>Description</u>
1	319206	1	Sail Switch Damper (embossed)
	802805	1	Sail Switch Rod and Damper Assembly (includes illus. nos. 1 through 3)
2	105550	1	Sail Switch Rod
3	154002	1	1/8" Push-On Fastener
4	150303	2	#4 x 3/4" Pan Head "A" Machine Screw
5	122200	1	Sail Switch ONLY
	802807	1	Sail Switch Bracket Assembly (includes illus. nos. 4 through 7)
6	319208	1	Sail Switch Bracket
7	154004	1	Twin Speed Nut
8	150001	2	#6-32 x 1/2" Round Head Machine Screw
9	153010	2	#6 Star Washer
10	152000	2	#6-32 Hex Nut

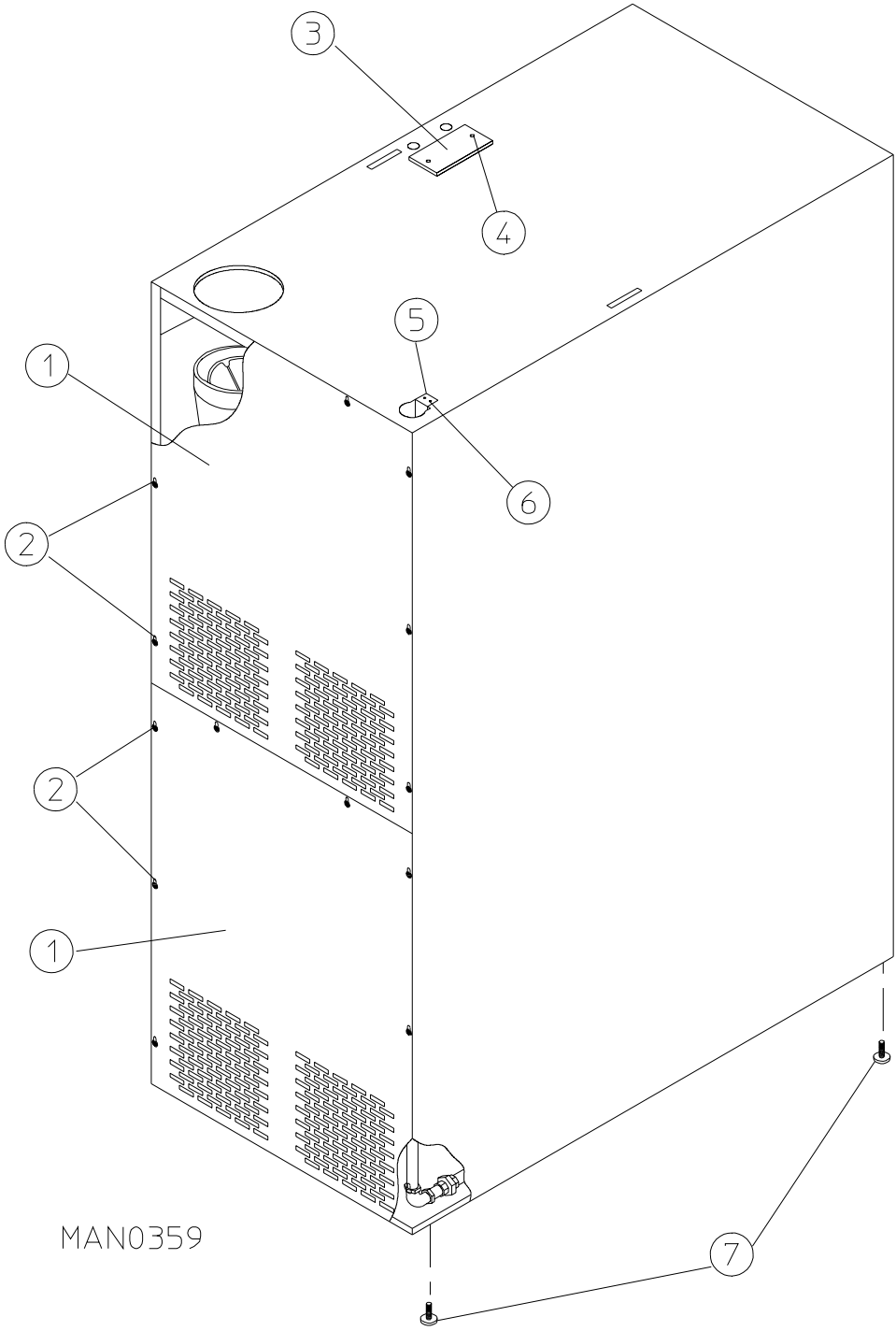
# Exhaust Ducting Assembly

## EXHAUST DUCTING



MAN0355

<u>Illus. No.</u>	<u>Part No.</u>	<u>Qty.</u>	<u>Description</u>
1	143535	1	Wye Branch
2	143536	2	Elbow (6" Round x 45°)
3	145327	1	Boot Straight (6" Round x 7" Oval)
4	145539	1	Duct (15-1/2" Long x 7" Oval)
5	143537	1	Elbow (7" Oval x 45°)
6	143538	1	Boot, Straight (6" Round x 7" Oval)
7	143536	2	Elbow (6" Round x 45°)
	117505	6	Tape, Aluminum Duct (sold by the foot)



<u>Illus. No.</u>	<u>Part No.</u>	<u>Qty.</u>	<u>Description</u>
1	311541	2	Back Guard Assembly
2	150301	16	#8-18 x 7/16" Phillips TEK Screw
3	315014	1	Plate Cover (Top Electric Box)
4	150301	2	#8-18 x 7/16" TEK Phillips Screw
5	318702	1	Top Pipe Support Bracket
6	150300	2	#10 x 1/2" Hex Head TEK Screw
7	103500	4	Leveling Leg

