

Maytag
MLG32PDB

(ADG-435 Parts Manual)

1999

For Internal Use Only

**RETAIN THESE INSTRUCTIONS IN A SAFE PLACE
FOR FUTURE REFERENCE**

Maytag
One Dependability Square
Newton, Iowa 50208
(515) 792-7000

Retain This Manual In A Safe Place For Future Reference

This product embodies advanced concepts in engineering, design, and safety. If this product is properly maintained, it will provide many years of safe, efficient, and trouble-free operation.

ONLY properly licensed technicians should service this equipment.

OBSERVE ALL SAFETY PRECAUTIONS displayed on the equipment or specified in the installation/operator's manual included with the dryer.

FOR YOUR SAFETY

Do not store or use gasoline or other flammable vapors or liquids in the vicinity of this or any other appliance

POUR VOTRE SECURITE

Ne pas entreposer ni utiliser d' essence ni d' autres vapeurs ou liquides inflammables dans le voisinage de cet appareil ou de tout autre appareil

We have tried to make this manual as complete as possible and hope you will find it useful. Manufacturer reserves the right to make changes from time to time, without notice or obligation, in prices, specifications, colors, and material, and to change or discontinue models.

Important

For your convenience, log the following information:

DATE OF PURCHASE _____ MODEL NO. **MLG32PDB (ADG-435PDB)**

DISTRIBUTORS NAME _____

Serial Number(s) _____

For replacement parts, contact the distributor from which the dryer was purchased or contact:

MAYTAG
403 West Fourth St. North
Newton, Iowa 50208
(515) 792-7000

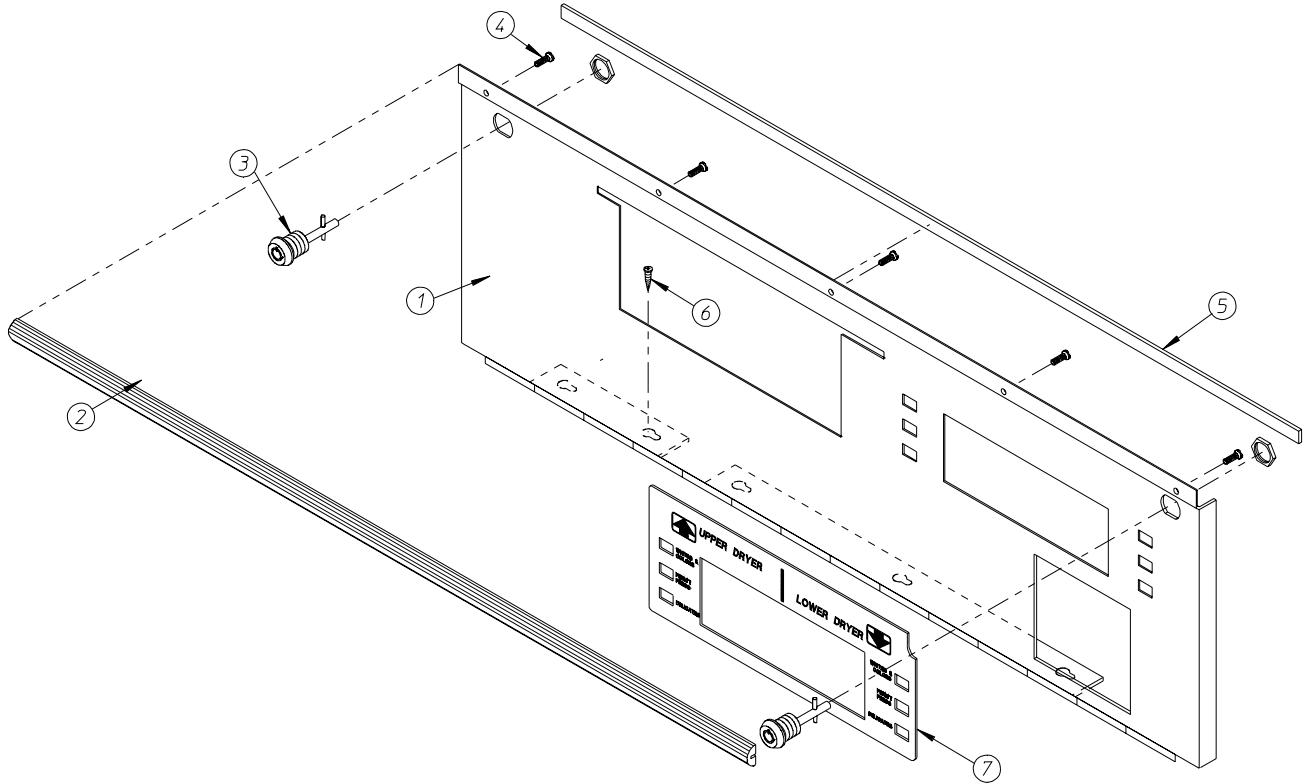
The illustrations on the following pages may not depict your particular dryer exactly. The illustrations are a composite of the various dryer models. Be sure to check the descriptions of the parts thoroughly before ordering.

“IMPORTANT NOTE TO PURCHASER”

Information must be obtained from your local gas supplier on the instructions to be followed if the user smells gas. These instructions must be posted in a prominent location near the dryer.

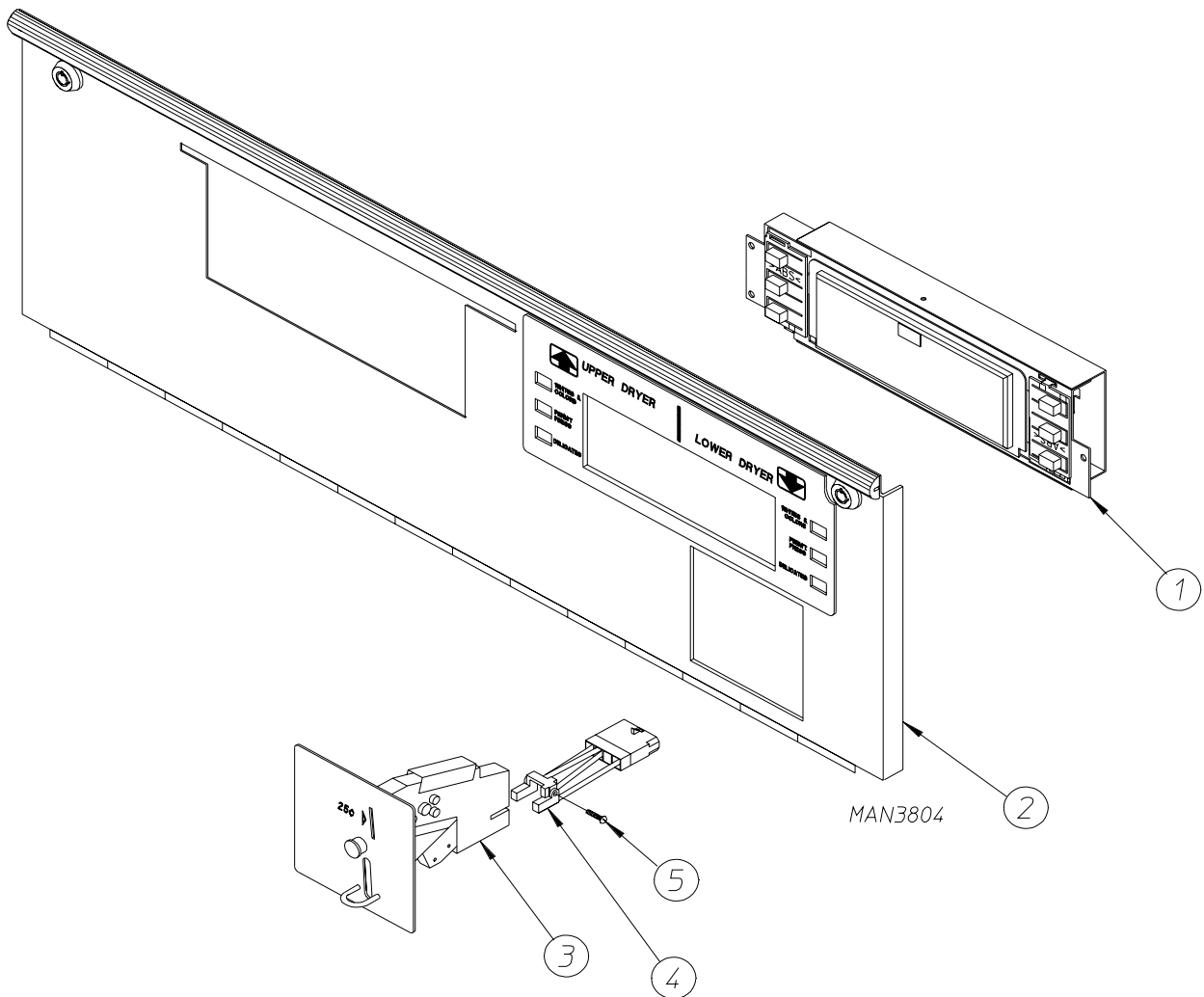
Table of Contents

Control Door Assembly	2
Main Computer/Coin Acceptor Assembly	3
Microprocessor (Computer) Assembly	4
Microprocessor Control Box Assembly	5
Main Door Assembly	6
Upper Front Panel Assembly	7
Lower Front Panel Assembly	8
Main Door Switch Assembly	9
Coin Vault Assembly	10
Lint Door Assembly	11
Lint Coop Assembly	12
Lint Drawer (Basket) II Assembly	13
Lint Drawer (Basket) Switch Assembly.....	14
Basket (Tumbler)/Support Assemblies	15
Temperature Sensor Bracket Assembly.....	16
Tumbler Bearing Assembly	17
Motor Mount Assembly	18
Direct Spark Ignition (DSI) Gas Valve Train Assembly	19, 20
Burner Box/Gas Piping Assemblies	21, 22
Sail Switch Assembly	23, 24
Idler Bearing Assembly	25
Exhaust Ducting Assembly	26
Back Guard Assembly	27

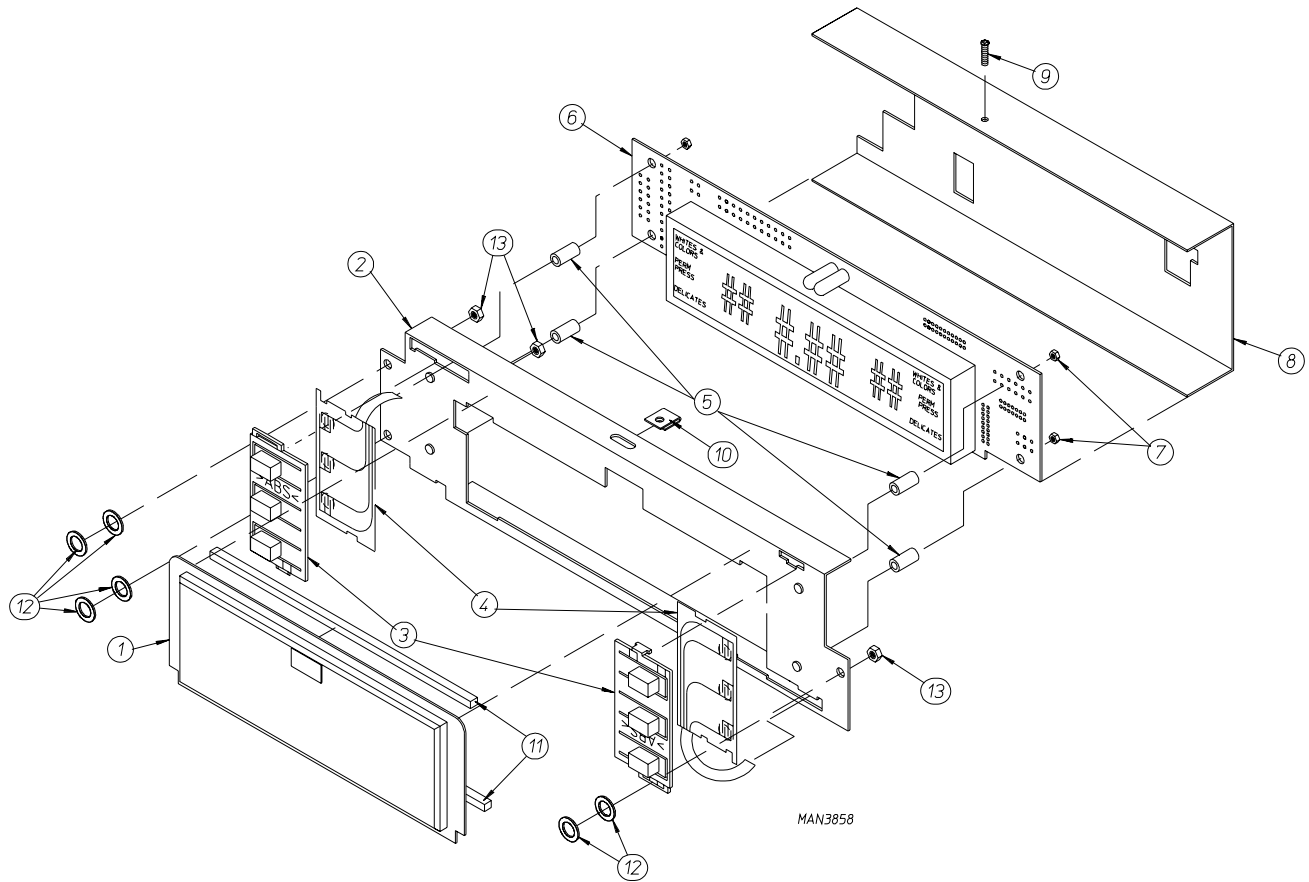


MAN3806

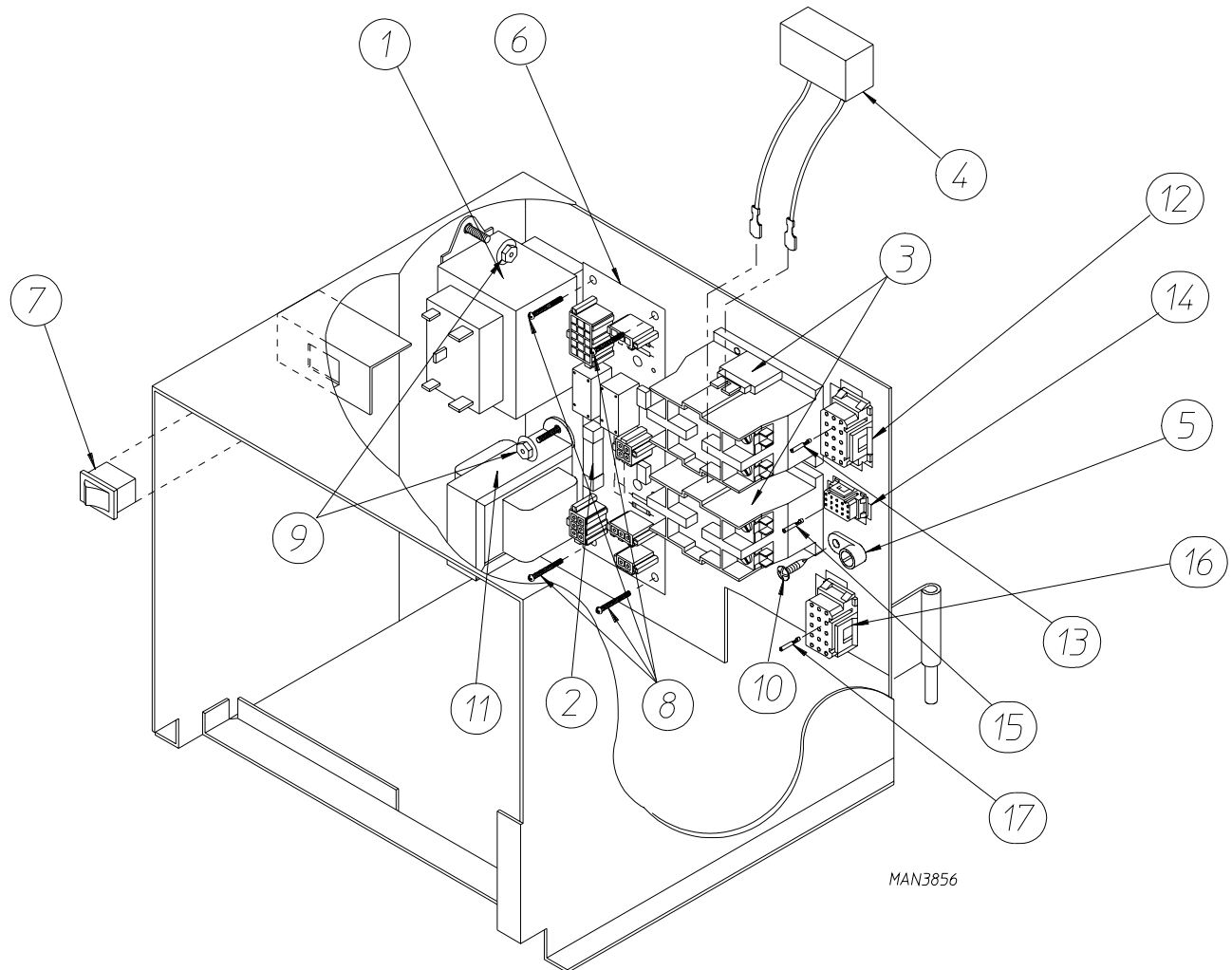
<u>Illus. No.</u>	<u>Part No.</u>	<u>Qty.</u>	<u>Description</u>
1	881977	1	White Hinged Control Door Assembly (includes illus. no. 1, 2, 4, 5, and 7)
	881978	1	Beige Hinged Control Door Assembly (includes illus. no. 1, 2, 4, 5, and 7)
	882181	1	Bisque Hinged Control Door Assembly (includes illus. no. 1, 2, 4, 5, and 7)
2	882181	1	Control Door Top Black Trim (29-5/8" length)
3	160040	2	DP Control Door Lock (keyed XX4451)
4	150201	5	#10-32 x 1/4" Phillips Pan Head Screw
5	117605	3	1/4" x 3/8" Neoprene Sponge Tape (sold by the foot)
6	150301	5	#8-18 x 7/16" Phillips Pan Head Screw
7	114075	1	"Maytag Control Display" Label



<u>Illus. No.</u>	<u>Part No.</u>	<u>Qty.</u>	<u>Description</u>
1	-----	1	Microprocessor (Computer) (refer to Microprocessor (Computer) Assembly on page 4)
2	-----	1	Control Door (refer to Control Door Assembly on page 2)
3	881935	1	Hanke 25¢ Coin Acceptor Assembly (includes illus. no. 3 through 6)
4	125157	1	Optic Switch ONLY for Hanke 25¢ Coin Acceptor
5	150002	1	#6-32 x 1 Phillips Round Head Machine Screw

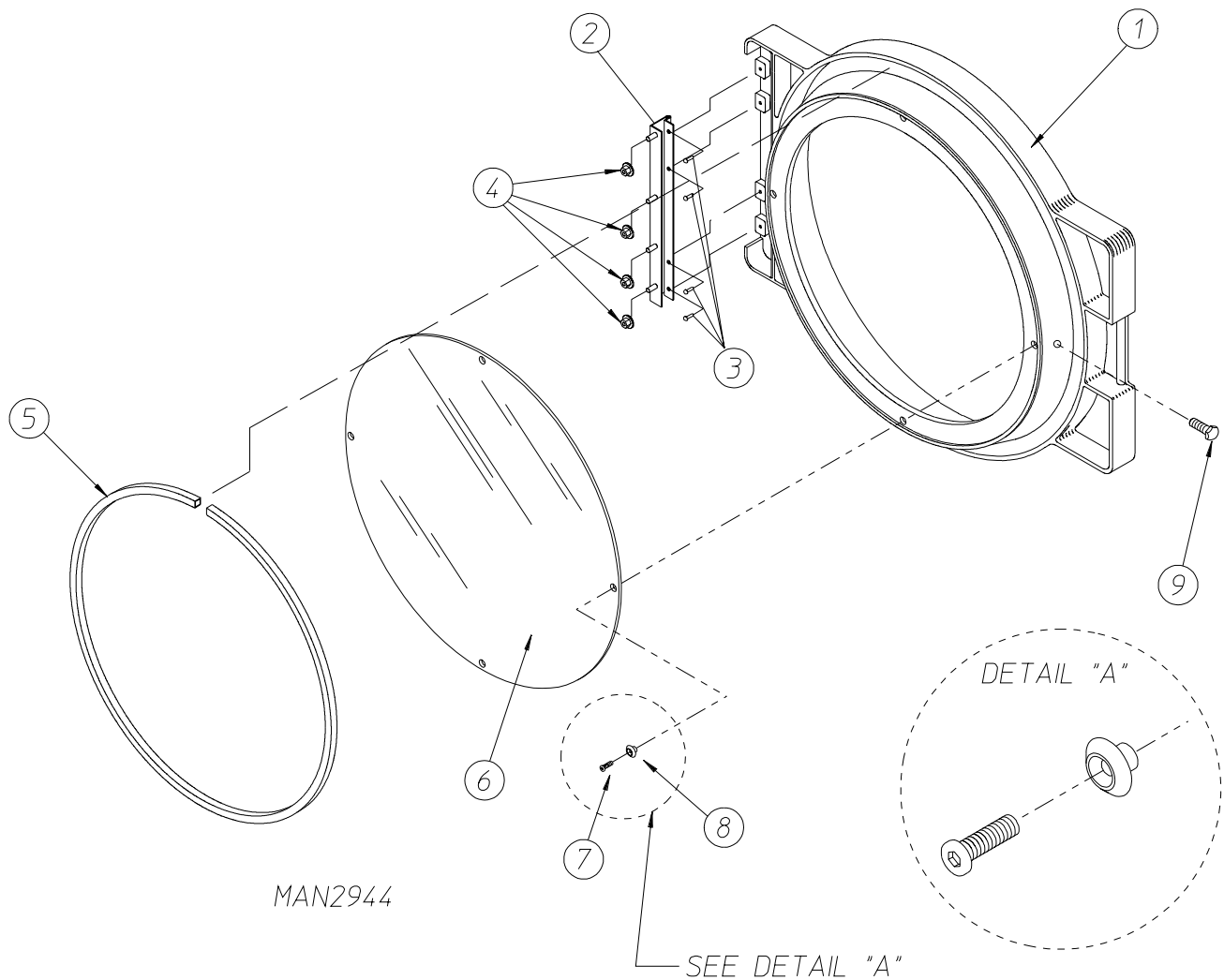


<u>Illus. No.</u>	<u>Part No.</u>	<u>Qty.</u>	<u>Description</u>
1	112543	1	Microprocessor (Computer) Display Lens
2	800937	1	Microprocessor (Computer) Mounting Panel
3	112544	2	Membrane Switch Push Button
4	112541	2	Molex Membrane Switch
5	154334	4	1/2" x 1/4" Nylon Stand Off
6	137239	1	Microprocessor (Computer) Board Only
7	152013	4	#6-32 x 1/4" Hex Nut
8	311514	1	Microprocessor (Computer) Board Cover
9	150310	1	#8 Phillips Pan Head "Type A" Screw
10	154008	1	Tinnerman "U" Clip
11	117605	1	Neoprene Sponge Tape (sold by foot)
12	153022	6	#10 Steel Burr
13	152001	3	#8-32 Hex Nut



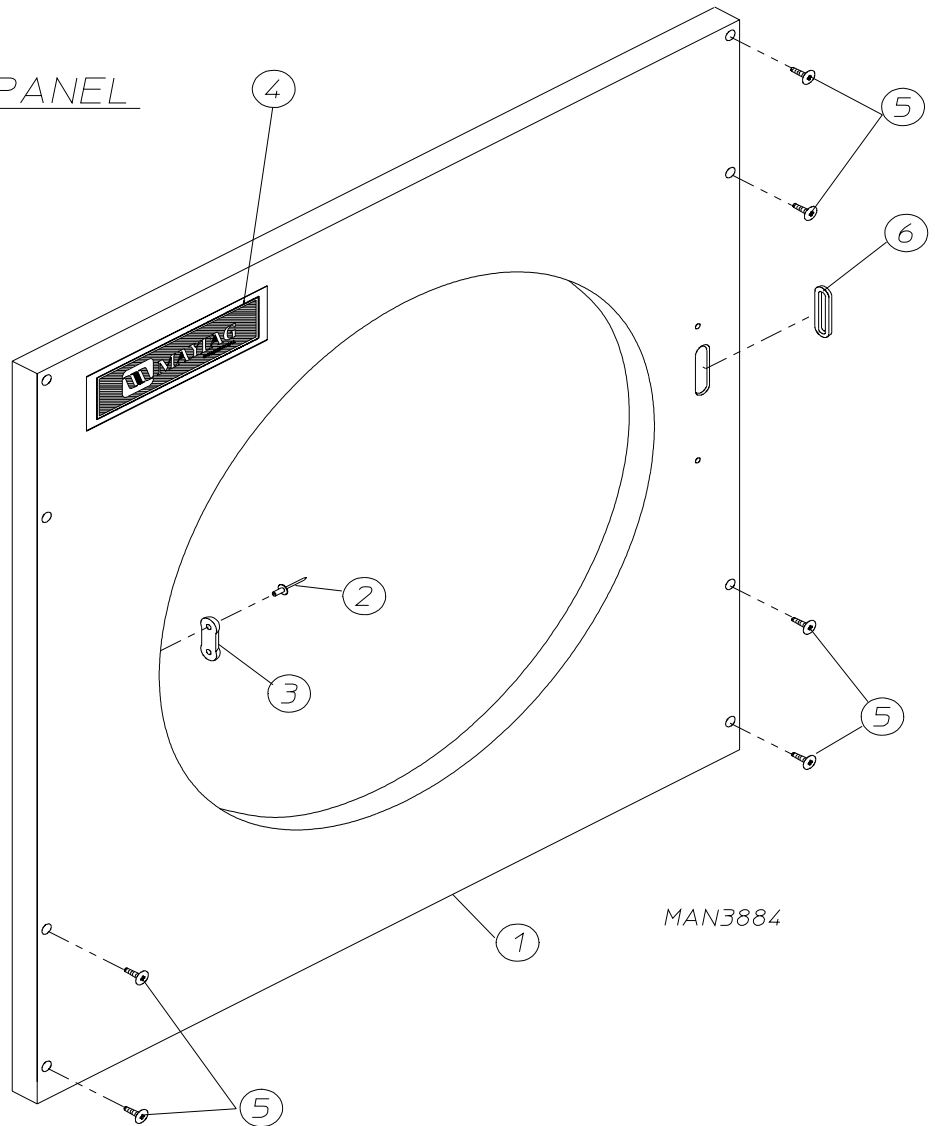
<u>Illus. No.</u>	<u>Part No.</u>	<u>Qty.</u>	<u>Description</u>
-------------------	-----------------	-------------	--------------------

1	132068	1	Multi-Tap Transformer Assembly
2	136057	1	1/2-Amp (Slo Blo) Fuse
3	132451	2	2-Pole Motor Contractor
4	824828	2	RC Network with Connectors
5	121010	1	L-70 Ground Lug
6	137241	1	Interconnect Board
7	122401	1	SPST (Single-Pole-Single-Throw) Rocker Switch
8	150005	4	#6-32 x 1/4" Phillips Head Machine Screw
9	151001	4	#8-32 Pal Nut
10	150300	3	#10-16 X 1/2" Hex Washer TEK Screw
11	821982	1	25V Micro Transformer Assembly
12	122626	1	15-Pin Female Connector
13	122705	15	Socket
14	122631	1	6 Position Connector
15	122705	6	Socket
16	122626	1	15-Pin Connector
17	122705	15	Socket

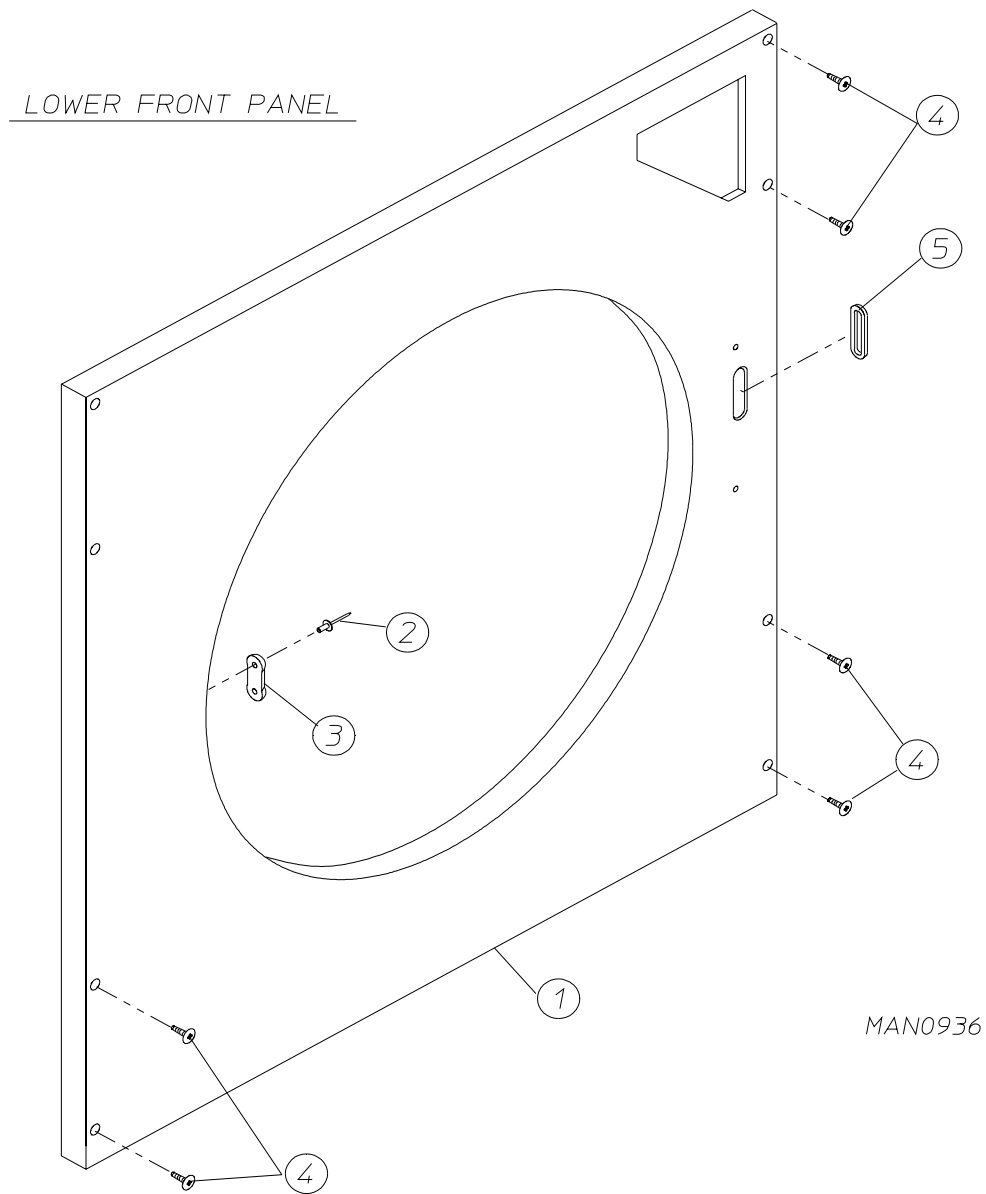


<u>Illus. No.</u>	<u>Part No.</u>	<u>Qty.</u>	<u>Description</u>
1	881422	1	Black Plastic Main Door Assembly (latch type) Complete with Mechanical Fasteners (includes illus. nos. 1 and 5 through 9)
2	800448	1	12-1/2" Stainless Steel Main Door Hinge Assembly
3	150410	4	#10-24 x 3/8" Phillips Pan Head Taptite Screw
4	152014	4	1/4-20 Free Spin Wash Nut
5	102349	1	Main Door Gasket
6	102212	1	20-7/16" Door Glass with (4) Holes
	170730	1	Main Door Gasket/Glass Adhesive (10.3 oz cartridge)
7	150448	4	1/2" Stainless Steel Flat Head Allen Screw
8	170319	4	Door Glass (Nylon) Spacer
9	150431	1	Main Door Latch Screw (#10 x 7/16" Dome Hex Head Screw)

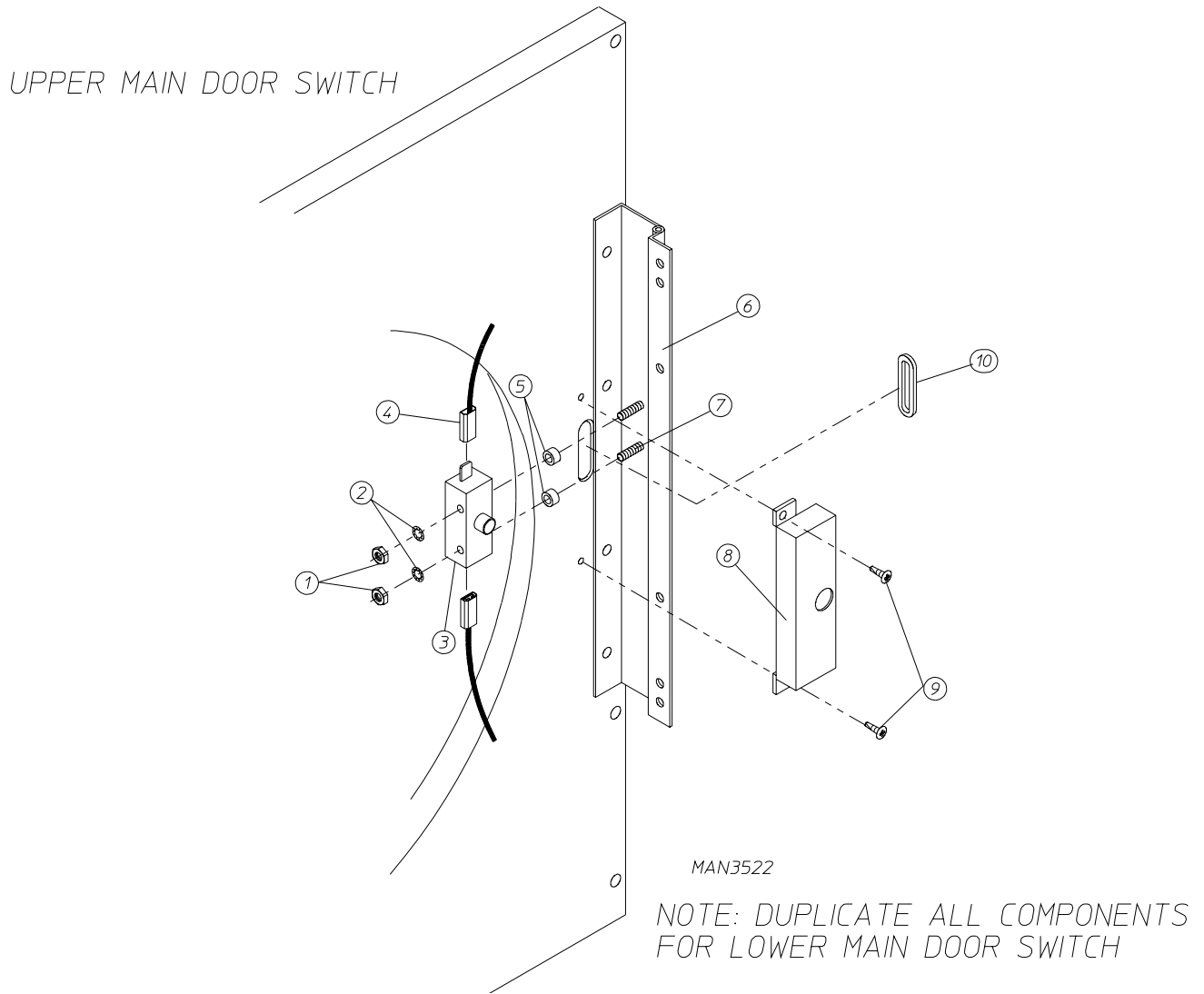
UPPER FRONT PANEL



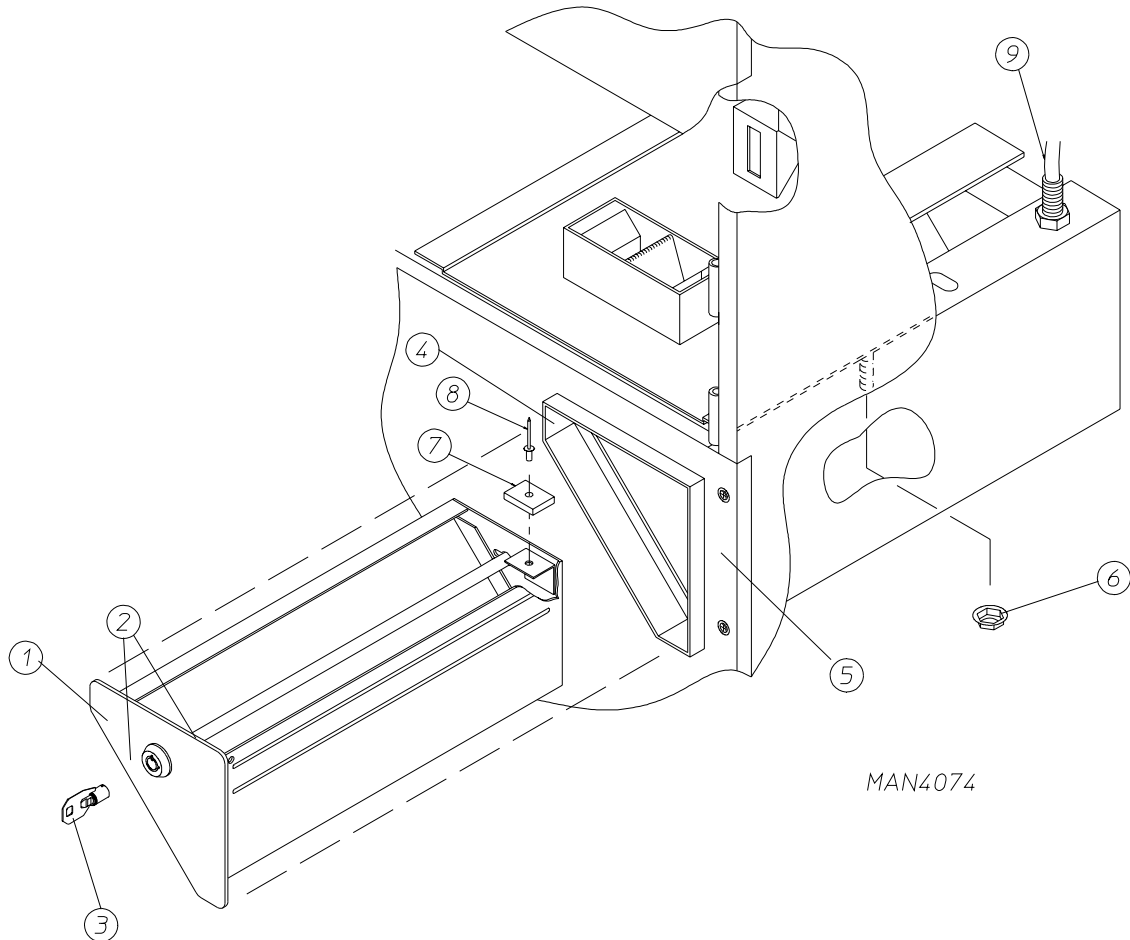
<u>Illus. No.</u>	<u>Part No.</u>	<u>Qty.</u>	<u>Description</u>
1	881973	1	White Upper Front Panel without Hinge (includes illus. no. 1 through 3 and 6)
	881974	1	Beige Upper Front Panel without Hinge (includes illus. no. 1 through 3 and 6)
	882182	1	Bisque Upper Front Panel without Hinge (includes illus. no. 1 through 3 and 6)
2	154215	2	1/8" Pop Rivet
3	881987	1	Friction Door Latch Kit (includes illus. nos. 2 and 3)
4	882027	1	Maytag Logo with Tape
5	150309	8	#10-16 x 1/2" Hex Head TEK Crimptite Screw
6	121405	1	Rubber Grommet



<u>Illus. No.</u>	<u>Part No.</u>	<u>Qty.</u>	<u>Description</u>
1	882061	1	White Lower Front Panel Assembly Complete without Hinge (includes illus. no. 1 through 3 and 5)
	882062	1	Beige Lower Front Panel Assembly Complete without Hinge (includes illus. no. 1 through 3 and 5)
	882183	1	Bisque Lower Front Panel Assembly Complete without Hinge (includes illus. no. 1 through 3 and 5)
2	154215	2	1/8" Pop Rivet
3	881987	1	Friction Door Latch Kit (includes illus. nos. 2 and 3)
4	150309	9	#10-16 x 1/2" Phillips Hex Head TEK Screw
5	121405	1	Rubber Grommet



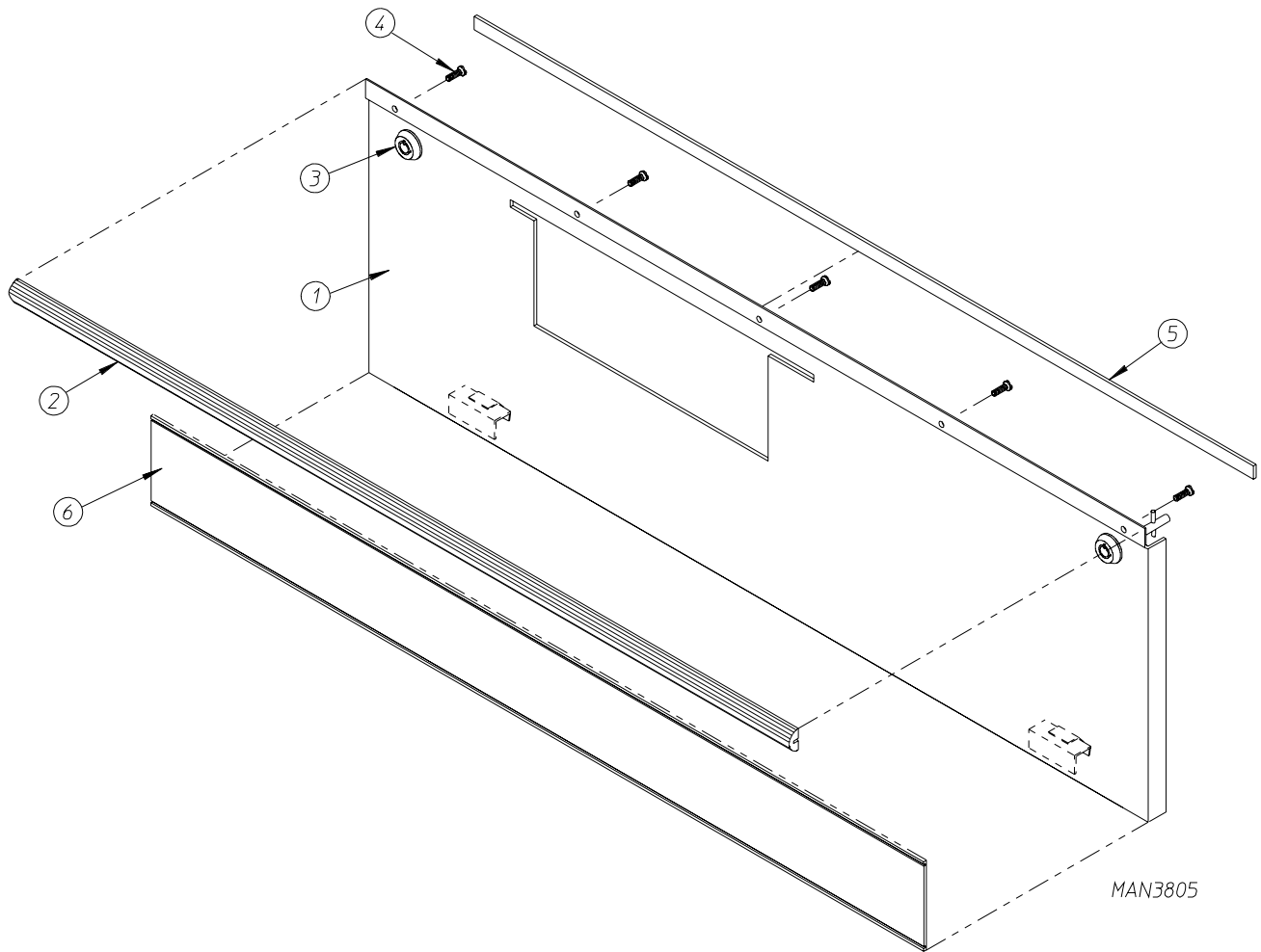
<u>Illus. No.</u>	<u>Part No.</u>	<u>Qty.</u>	<u>Description</u>
1	152013	2	#6-32 Hex Nut
2	153008	2	#6 Lock Washer
3	137005	1	Single Pole Door Switch
4	121028	2	Insulated Female Terminal
5	154281	2	3/8" Standard Nylon Spacer
6	800448	1	12-1/2" Stainless Steel Main Door Hinge
7	153565	2	#6 Stud
8	881246	1	Main Door Switch Housing ONLY
9	150201	2	#10-32 x 1/4" Phillips Pan Head TEK Screw
10	121405	1	Rubber Grommet



MAN4074

<u>Illus. No.</u>	<u>Part No.</u>	<u>Qty.</u>	<u>Description</u>
1	882194	1	Coin Box only with magnet
	882028	1	With Coin Box Faceplate ONLY
	882029	1	Beige Coin Box Faceplate ONLY
	882184	1	Bisque Coin Box Faceplate ONLY
2	160036	1	Ace® Lock Assembly With Key
3*	160136	1	Ace® Key Only
4	881975	1	White Coin Vault ONLY
	881976	1	Beige Coin Vault ONLY
5	-----	1	Lower Front Panel (refer to Lower Front Panel Assembly on page 8)
6	152014	4	1/4-20 Free Spin Wash Nut
7	102102	1	1" x 3/4" x .197 Magnet
8	154200	1	5/32" Pop Rivet
9	824807	1	Rotational Sensor Magnetic Reed Switch Assembly

* Specify key number when ordering.

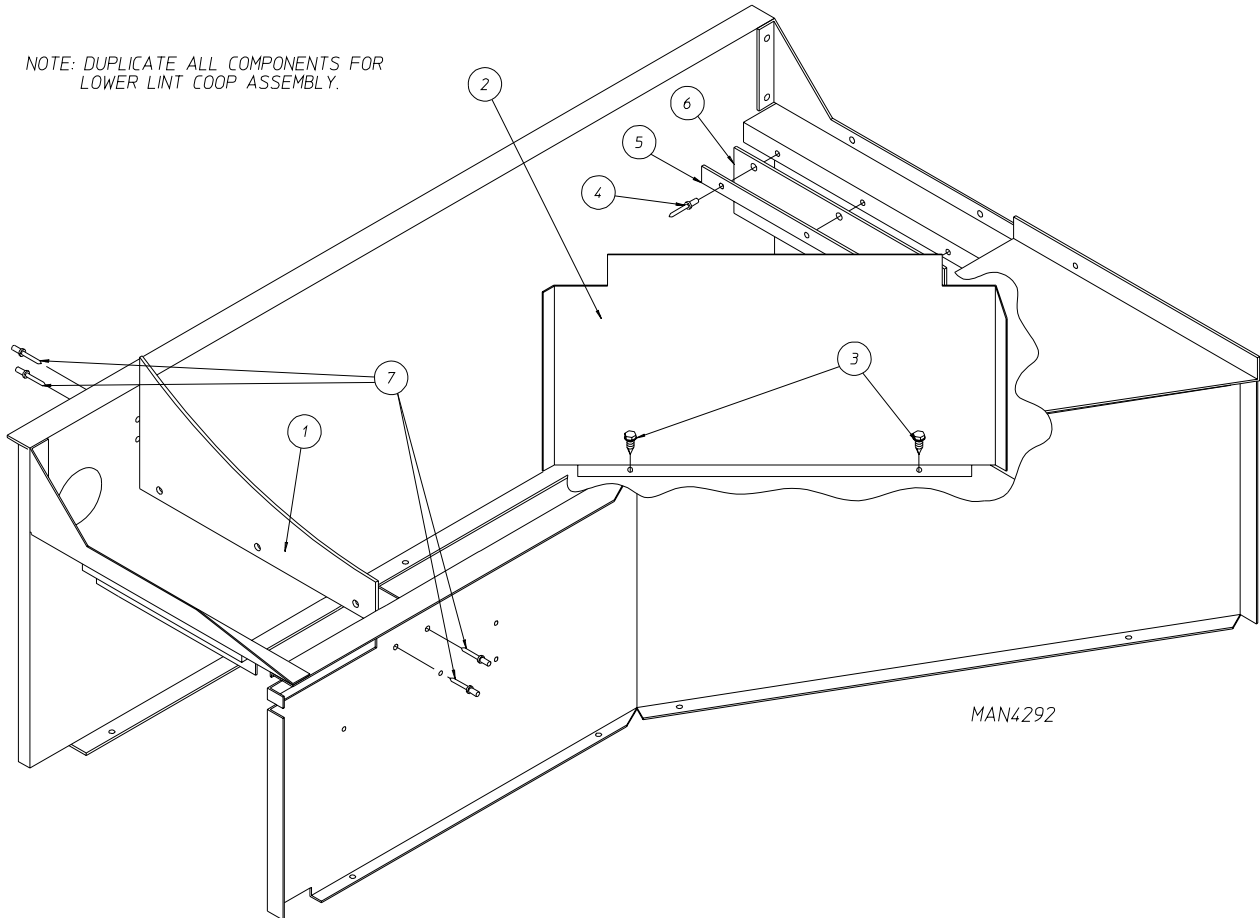


MAN3805

<u>Illus. No.</u>	<u>Part No.</u>	<u>Qty.</u>	<u>Description</u>
1	881979	1	White Lint Door Assembly Complete (includes illus. no. 1, 2 and 4 through 6)
	881984	1	Beige Lint Door Assembly Complete (includes illus. no. 1, 2 and 4 through 6)
	882198	1	Bisque Lint Door Assembly Complete (includes illus. no. 1, 2 and 4 through 6)
2	180224	1	Lint Door Top Black Trim (29-5/8" length)
3	160040	2	DP Control Door Lock (keyed XX4451)
	160140	2	Key Only (keyed XX4451)
4	150201	5	#10-32 x 1/4" Phillips Pan Head Screw
5	117605	4	1/4" x 3/8" Neoprene Sponge Tape (sold by the foot)
6	180229	1	Black Kick Trim

LINT COOP ASSEMBLY

NOTE: DUPLICATE ALL COMPONENTS FOR
LOWER LINT COOP ASSEMBLY.

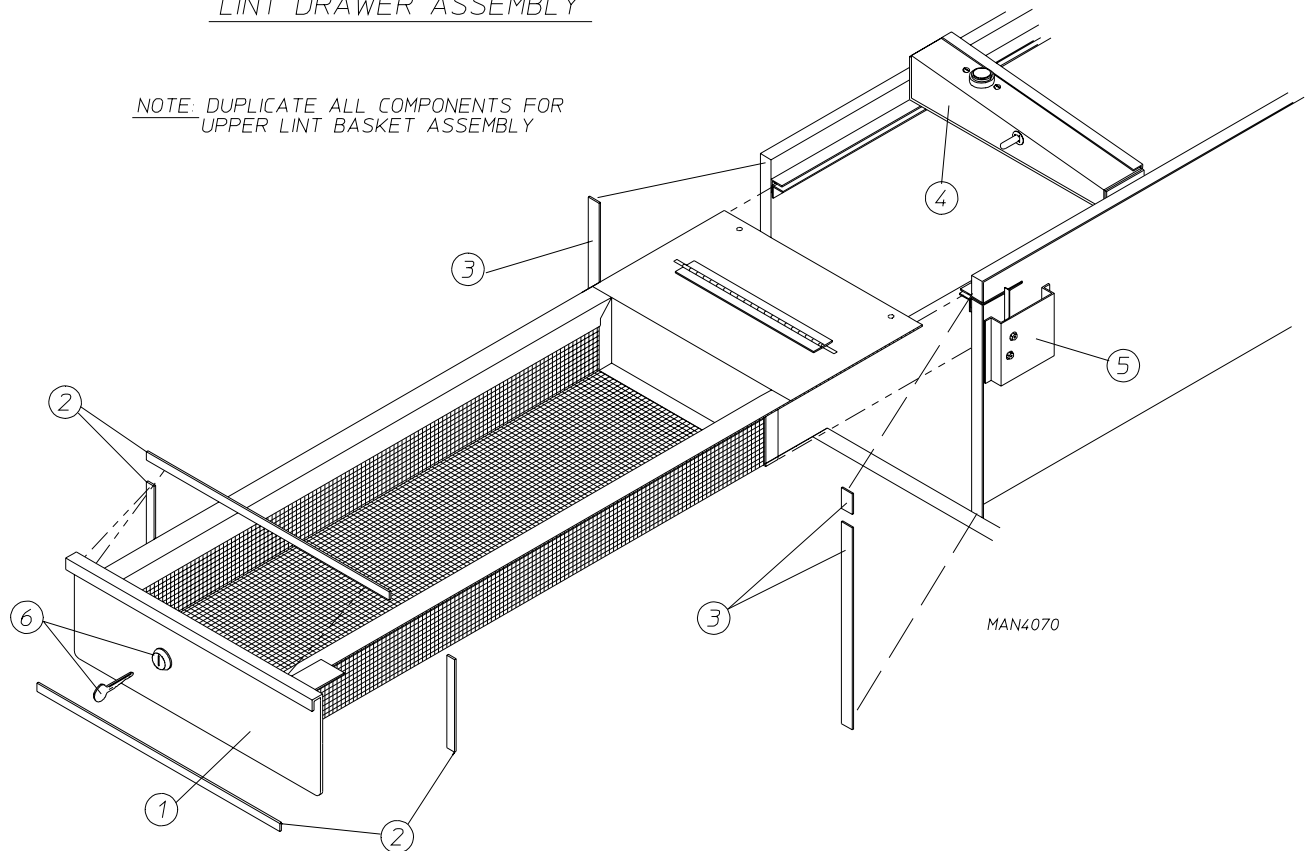


MAN4292

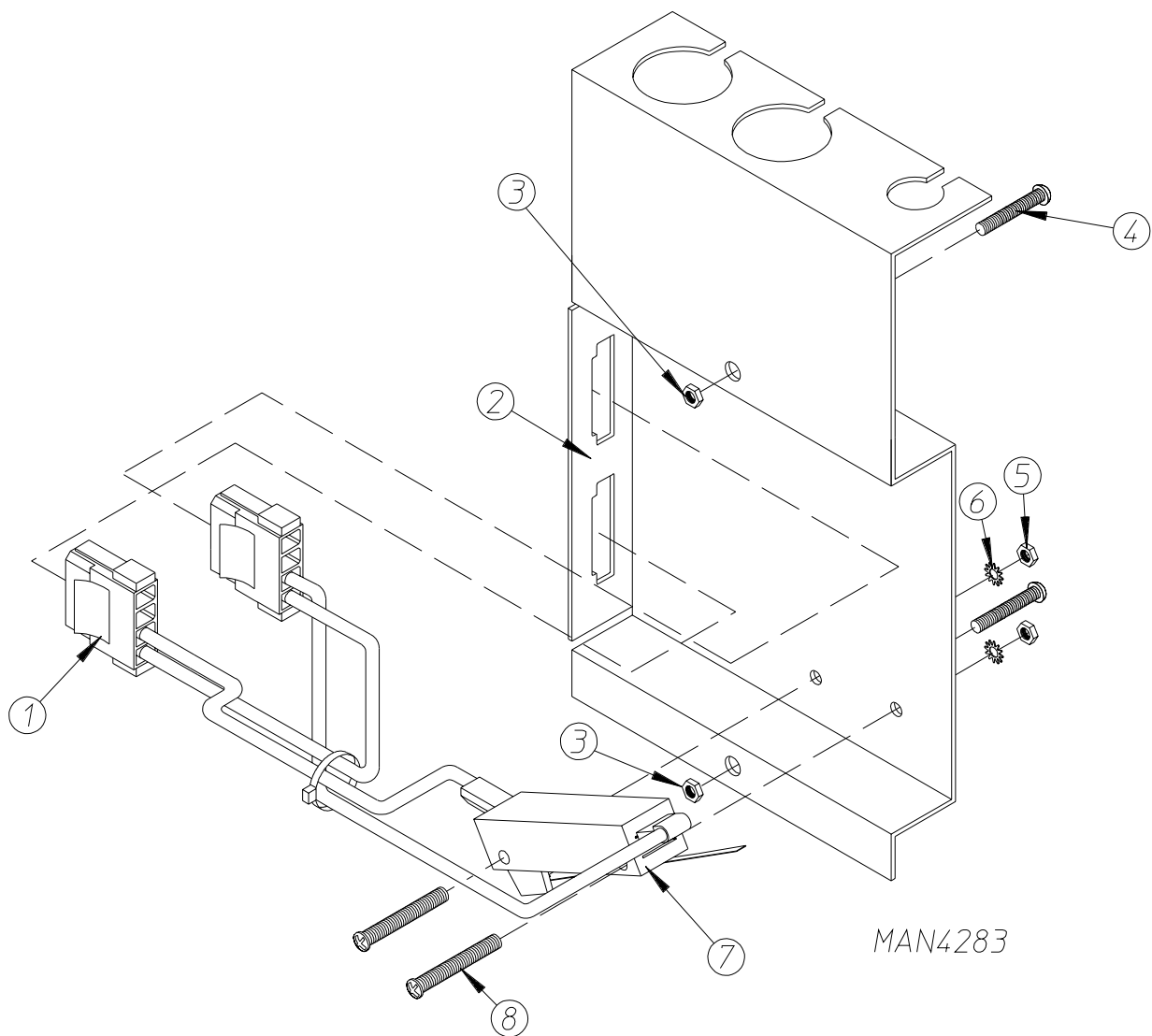
<u>Illus. No.</u>	<u>Part No.</u>	<u>Qty.</u>	<u>Description</u>
1	882249	1	AD-435 Wire Clip/Lint Coop Assembly W/Felt
2	311527	1	Lint Coop Baffle
3	150300	2	#10"x 16"x 1/2" Hex Washer Screws
4	154200	3	Pop Rivets
5	317650	1	Felt Seal Retainer
6	116012	1	Lint Basket Seal
7	154200	4	Pop Rivet

LINT DRAWER ASSEMBLY

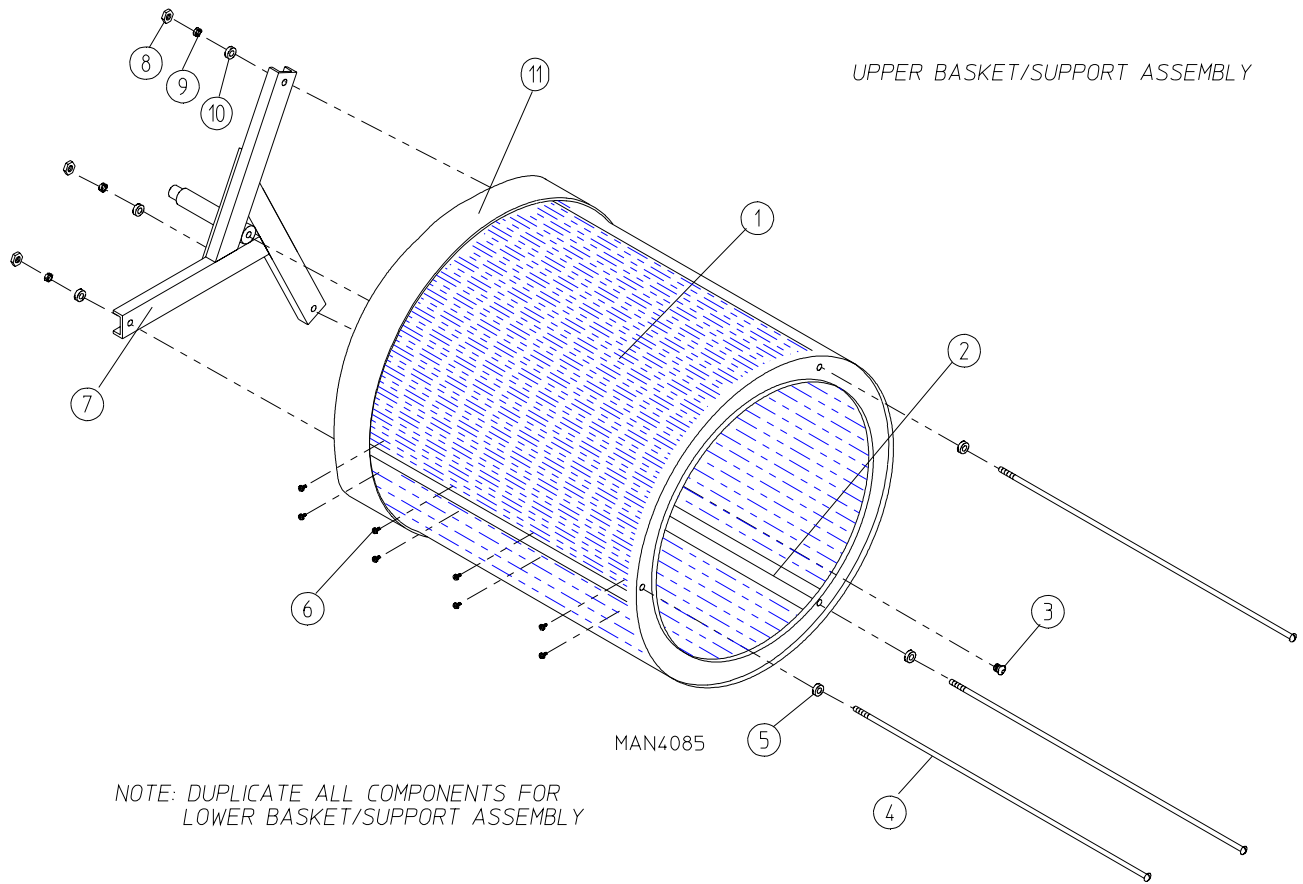
NOTE: DUPLICATE ALL COMPONENTS FOR
UPPER LINT BASKET ASSEMBLY



<u>Illus. No.</u>	<u>Part No.</u>	<u>Qty.</u>	<u>Description</u>
1	882196	1	White Locking Lint Drawer (Basket) II Assembly Complete less Lock (includes illus. no. 1 and 2)
	882086	1	Beige Locking Lint Drawer (Basket) II Assembly Complete less Lock (includes illus. no. 1 and 2)
	882195	1	Bisque Locking Lint Drawer (Basket) II Assembly Complete less Lock (includes illus. no. 1 and 2)
2	117604	4	1/8" x 3/8" Neoprene Sponge Tape (sold by the foot)
3	117605	3	1/4" x 3/8" Neoprene Sponge Tape (sold by the foot)
4	-----	1	Temperature Sensor Bracket (refer to Temperature Sensor Bracket Assembly on page 16)
5	-----	1	Lint Drawer (basket) Switch (refer to Lint Drawer Switch Assembly on page 14)
6	160039	1	Lint Drawer Lock Assembly (keyed to number XX4451)
	160140	1	Key ONLY (key number XX4451)
	160034	1	Cam ONLY ... Not Illustrated

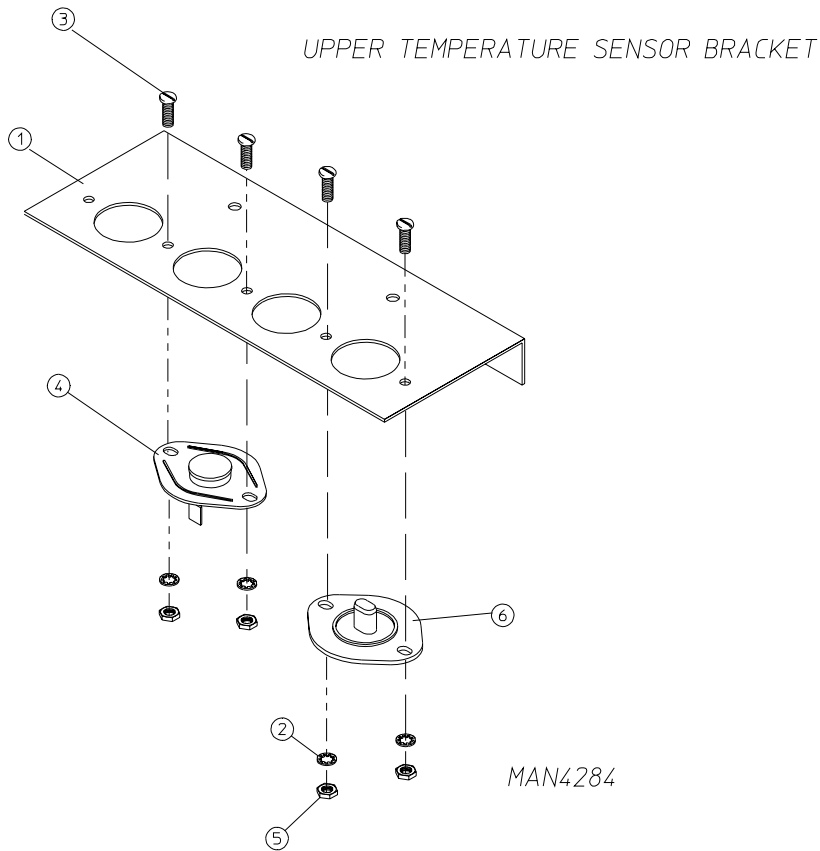


<u>Illus. No.</u>	<u>Part No.</u>	<u>Qty.</u>	<u>Description</u>
1	882188	1	Top Lint Drawer Switch Harness ONLY
	882187	1	Bottom Lint Drawer Switch Harness ONLY
2	882185	1	Top Lint Door Switch Assembly
	882189	1	Bottom Lint Door Switch Assembly



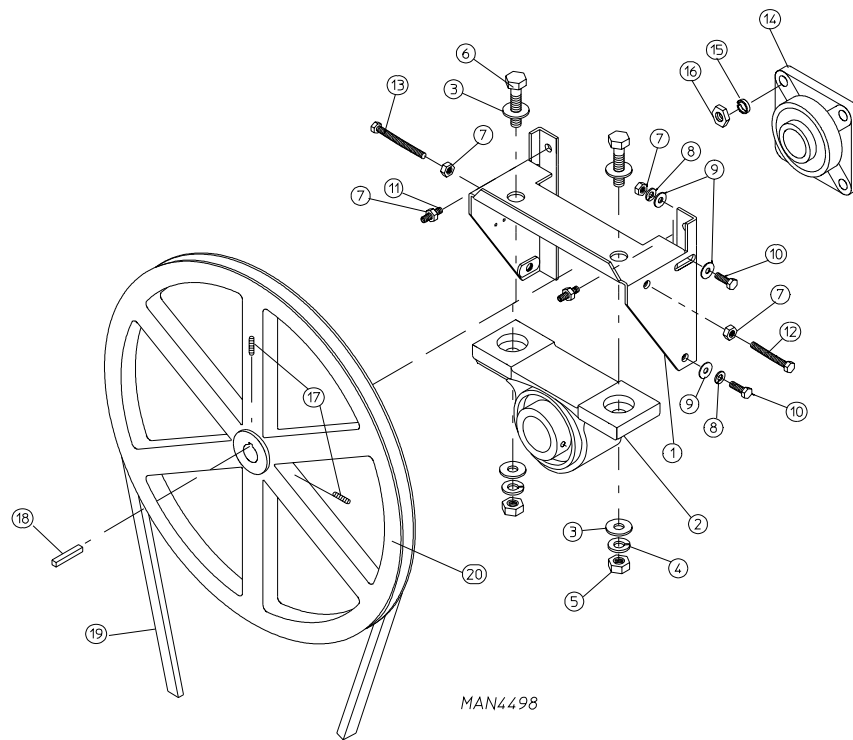
<u>Illus. No.</u>	<u>Part No.</u>	<u>Qty.</u>	<u>Description</u>
1	882180	1	Basket (Tumbler)/Support Assembly Complete (includes illus. no. 1 through 11)
	882192*	1	Basket (Tumbler) without Felt Collar
2	301315	2	Short Tapered Rib
	301316	1	Tall Tapered Rib
3	150518	1	5/16" x 3/8" Socket Head Screw
4	100915	3	3/8-16 x 31" Tie Rod
5	153004	3	3/8" Flat Washer
6	150413	30	#10-16 x 1/2" TORX Head Crimptite Screw
	150429	1	TORX Hand Driver (for removal of TORX Head Screw)
7	850064	1	Basket (Tumbler) Support ONLY
8	152005	3	3/8-16 Hex Nut
9	153005	3	3/8" Lock Washer
10	153004	3	3/8" Flat Washer
11	116003	1	Felt Collar ONLY
	401010	-	#847 Adhesive for Felt Collar (5 oz tube)

* Felt collar is not included and **must be** ordered separately.

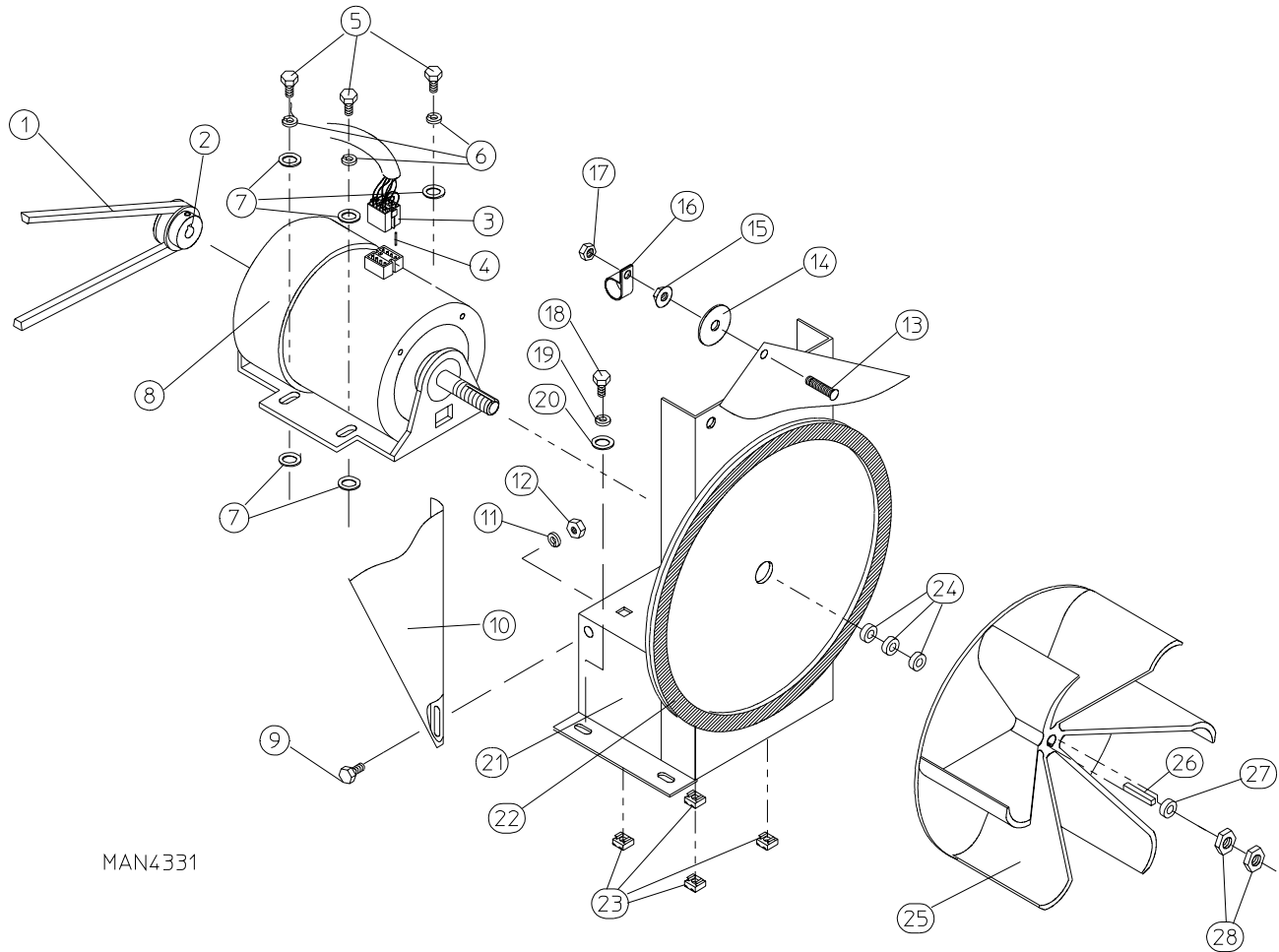


NOTE: DUPLICATE ALL COMPONENTS FOR
LOWER TEMPERATURE SENSOR BRACKET

<u>Illus. No.</u>	<u>Part No.</u>	<u>Qty.</u>	<u>Description</u>
1	882186	1	Temperature Sensor Bracket (II) Complete (includes illus. no. 1 through 7)
	311505	1	Temperature Sensor Bracket ONLY
2	153010	4	#6 Star Washers
3	150005	4	#6-32 x 1/4" Round Head Machine Screw
4	130100	1	150° Thermostat ONLY
5	152000	4	#6-32 Hex Nut
6	130117	1	Thermister
-	821987	1	Sensor Bracket Harness (top) ... Not Illustrated
-	821988	1	Sensor Bracket Harness (bottom) ... Not Illustrated

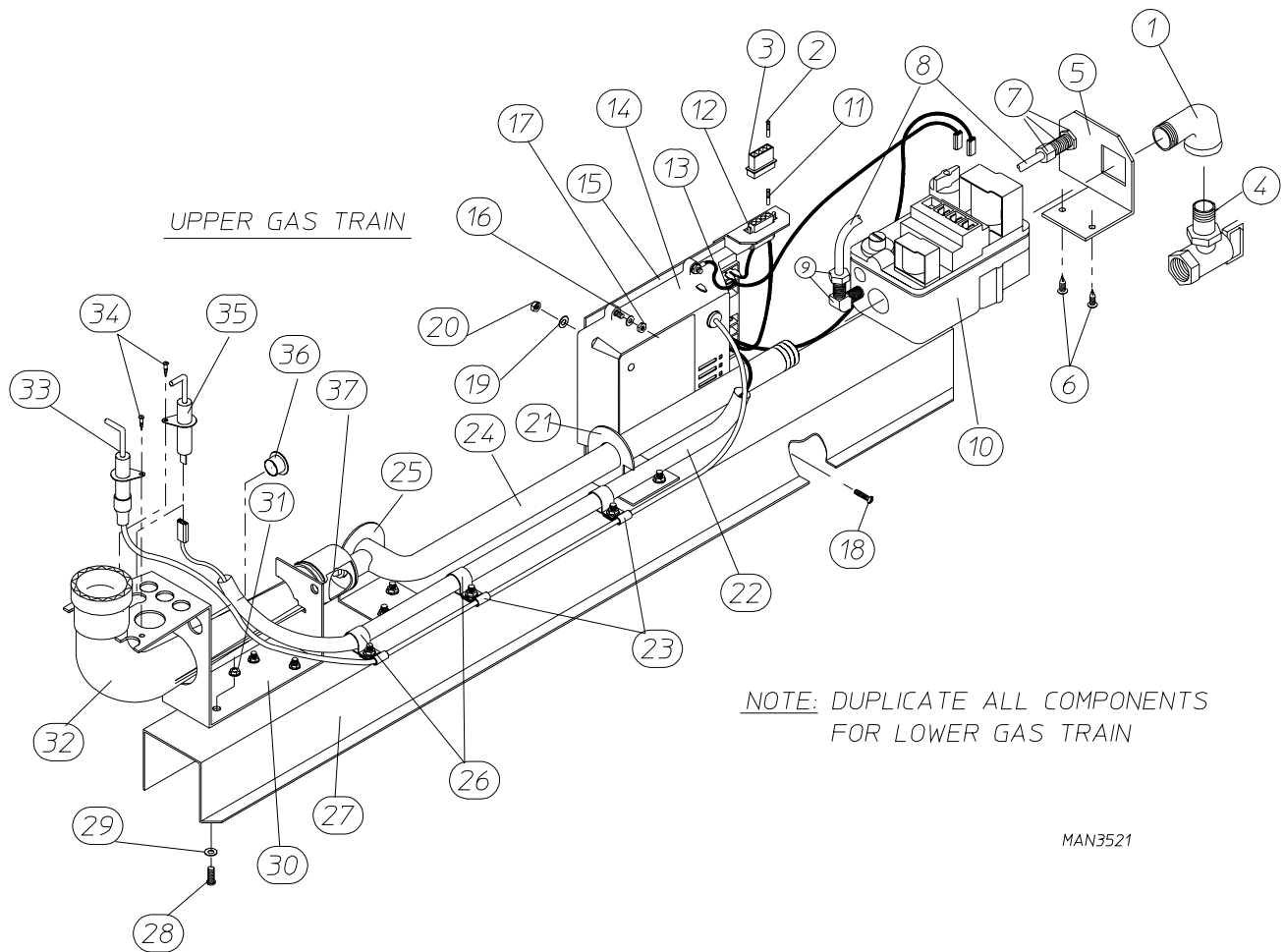


<u>Illus. No.</u>	<u>Part No.</u>	<u>Qty.</u>	<u>Description</u>
1	882250	1	ADG-435PDB Tumbler Support Complete (includes Illustration numbers 1-13)
	882251	1	ADG-435 PDB Tumbler Support only
2	880202	4	1 3/8" Pillow Block Bearing
3	153004	4	3/8" Flat Washer
4	153005	2	3/8" Lock Washer
5	152005	2	3/8"-16 Hex Nut
6	150600	2	3/8"-16 x 1 1/2" Hex Nut
7	152004	6	5/16"-18 Hex Nut
8	153002	4	5/16" Lock Washer
9	153001	6	5/16" Flat Washer
10	150621	4	5/16"-18 x 1-1/2" Hex Bolt
11	150610	2	5/16-18 x 1/2" Allen Set Srew
12	150509	1	5/16"-18 x 3" Hex Bolt
13	150613	1	5/16"- 18 x 4" Hex Bolt
14	880203	1	1 3/8" Flange Bearing
15	153005	4	3/8" Lock Washer
16	152005	4	3/8" Hex Nut
17	154301	2	5/16"-18 x 1" Allen Set Screw
18	100713	1	1/4" x 1/4" x 7/8" Key
19	100100	1	5L-650 V-Belt
20	101100	1	18" Pulley



MAN4331

<u>Illus No.</u>	<u>Part No.</u>	<u>Qty.</u>	<u>Description</u>
1	100144	1	4L-410 V-Belt (motor to idler)
2	101131	1	1/2" x 2 1/4" Motor Pulley
3	137030	1	8-Pin Socket Connector
4	122701	6 or 8	Socket Terminal ONLY
	122801	1	Pin/Socket Extraction Tool
5	150501	4	5/16" x 3/4" Hex Head Machine Bolt
6	153002	4	5/16" Lock Washer
7	153001	8	5/16" Flat Washer
8	100065	1	1/2 HP 120/230v 60 Hz Motor with Plug
9	150111	1	1/4" x 1/2 Phillips Round Head Machine Screw
10	311551	1	Idler Support Bracket
11	153007	1	1/4" Lock Washer
12	152002	1	1/4" Hex Nut
13	153525	1	1/4" x 1" Self Clinching Stud
14	153003	1	3/8" x 1-1/2 Washer
15	152014	1	1/4" Free Spin Nut
16	121490	1	1/2" Nylon Clamp
17	152002	1	1/4" Hex Nut
18	150501	4	5/16" x 3/4" Hex Head Machine Bolt
19	153002	4	5/16" Lock Washer
20	153001	4	5/16" Flat Washer
21	882191	1	1/2 HP Motor Mount ONLY
	882190	1	1/2 HP 120/230v Motor Mount Assembly (includes illus. no. 2, 5 through 8 and 18 through 28)
22	117600	4	Noise Suppressor Tape (sold by the foot)
23	154000	4	5/16" Tinnerman Nut
24	153050	3	1/2" Flat Washer
25	100604	1	12-1/2" Impeller with 1/2" Bore
26	100702	1	1/8" x 1/8" x 1-1/2" Key
27	153050	2	1/2" Flat Washer
28	152006	2	1/2" Left Hand Jam Nut

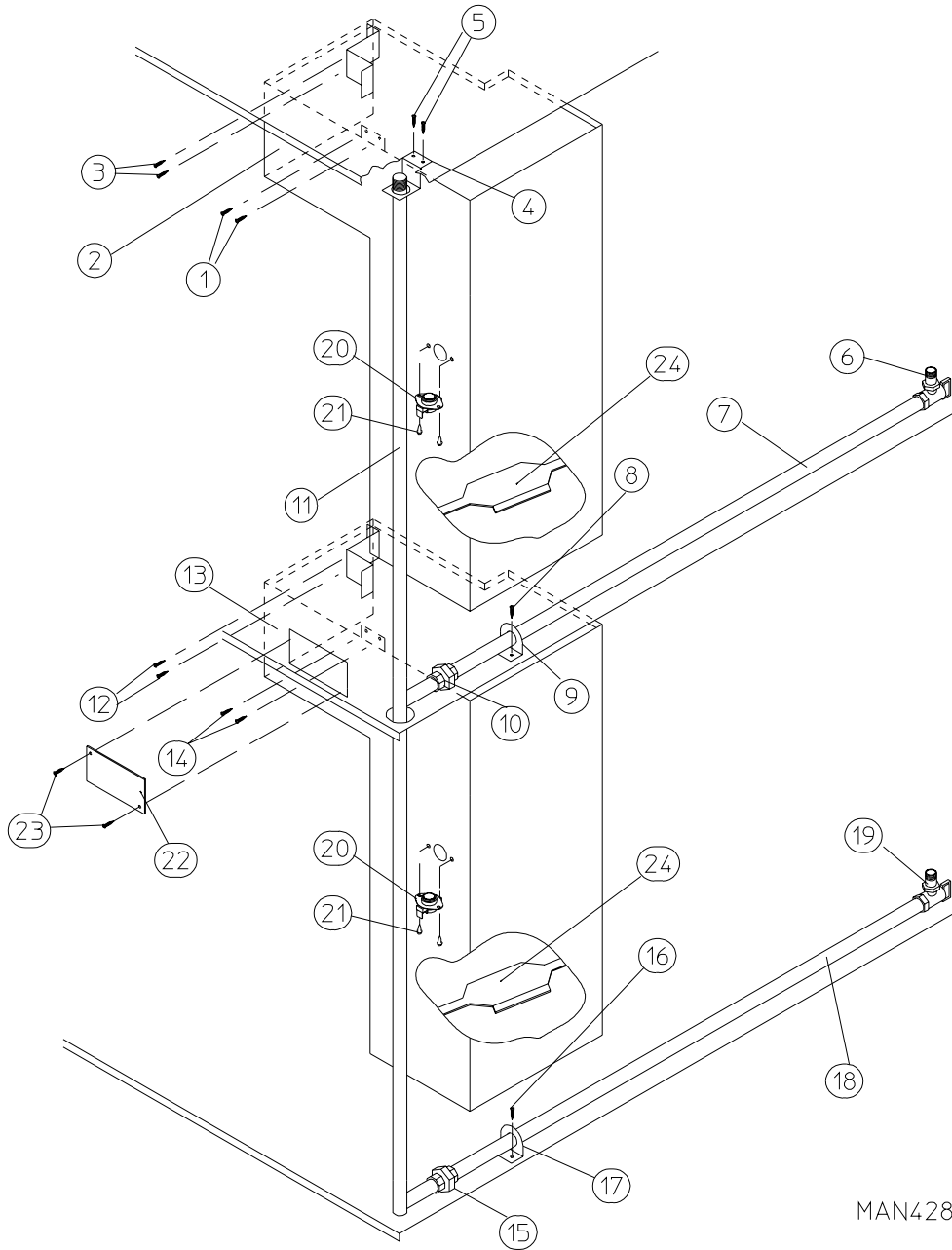


<u>Illus. No.</u>	<u>Part No.</u>	<u>Qty.</u>	<u>Description</u>
1	142506	1	1/2" x 1/2" Street Elbow
2	122700	2	Pin Terminal ONLY
	112801	1	Pin/Socket Extraction Tool
3	122604	1	4-Pin Connector ONLY
4	881367	1	1/2" Union Shut Off With Tail Piece
5	318712	1	Gas Valve Pipe Bracket
6	150301	2	#8-10 x 7/16" Phillips Pan Head TEK Screw
7	143259	1	Bulkhead Fitting
8	143100	1	1/4" Aluminum Tubing (sold by the foot)
9	143203	1	90° Line Adapter

<u>Illus. No.</u>	<u>Part No.</u>	<u>Qty.</u>	<u>Description</u>
10	128927	1	1/2" 24 VAC DSI Redundant (natural gas) Gas Valve
	140411	1	1/2" 24 VAC L.P. (liquid propane) Conversion Kit
11	122701	2	Socket Terminal ONLY
12	122605	1	4-Pin Socket Connector ONLY
13	842716	1	Gas Valve Train Wiring (Top Gas Train)
	842724	1	Gas Valve Train Wiring (Bottom Gas Train)
14	880815	1	DSI (Direct Spark Ignition) Module ONLY
15	850808	1	DSI (Direct Spark Ignition) Module Mounting Bracket ONLY
16	153017	4	#6 Star Washer
17	151000	4	#6-32 Pal Nut
18	153528	2	#8-32 x 1/2" Self Clinching Stud
19	153012	2	#8 Star Washer
20	152001	2	#8-32 Hex Nut
21	318711	1	Notched Pipe Bracket
22	121060	4	5/8" Clear Flexite
23	121492	3	3/16" Nylon Clamp
24	141225	1	Single-Port Manifold ONLY
25	318700	1	Pipe Bracket
26	121491	3	5/8" Nylon Clamp
27	801022*	1	Natural Gas Valve Train Assembly Complete Less Orifice (includes illus. no. 1 through 3 and 5 through 36)
	319522	1	Gas Valve Train Slide ONLY
28	153528	9	#8-32 x 1/2" Self-Clinching Stud
29	153012	16	#8 Star Washer
30	318009	1	Burner Tube Bracket
31	151001	8	#8-32 Pal Nut
32	141130	1	DSI (Direct Spark Ignition) Up-Shot Burner Tube ONLY
33	128917	1	Spark Electrode
34	150315	2	#6 x 3/8" Phillips
35	128918	1	Flame Sensor
36	121300	2	Open/Closed Bushing
37**	140829	1	#23 Burner Orifice (Natural Gas) ONLY
	140814	1	#42 Burner Orifice (Liquid Propane) ONLY
	882175	1	DSI (Direct Spark Ignition) L.P. Conversion Kit

* Orifices *are not included* and **must be** ordered separately

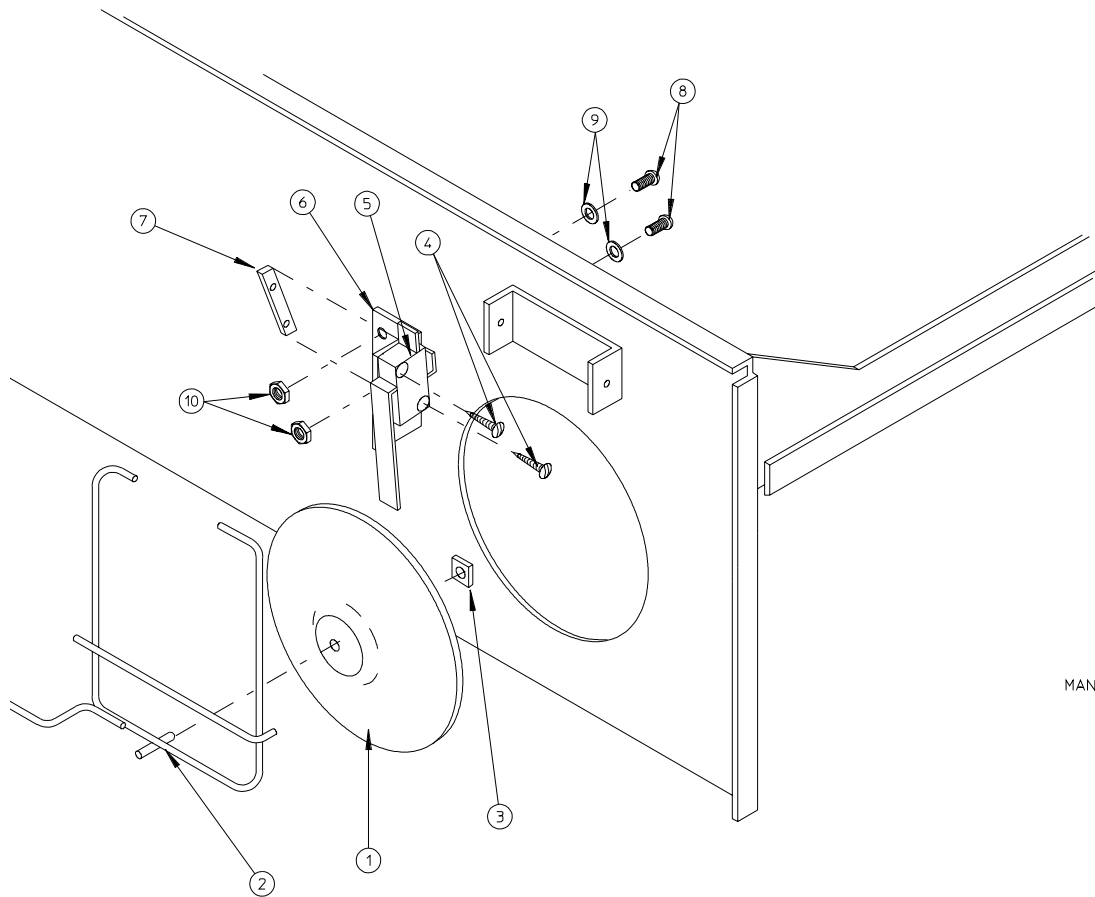
** Consult factory for elevations over 2,000 feet.



MAN4286

<u>Illus. No.</u>	<u>Part No.</u>	<u>Qty.</u>	<u>Description</u>
1	150301	2	#8-18 x 7/16" Phillips Pan Head TEK Screw
2	882231	1	Burner Box with Spreader Assembly
3	150301	2	#8-18 x 7/16" Phillips Pan Head TEK Screw
4	318702	1	Top Pipe Support Bracket
5	150300	2	#10 x 1/2" Hex Head TEK Screw
6	881367	1	1/2" Union Shut Off with Tailpiece
7	142823	2	1/2" x 40" Long Pipe
8	150300	2	#10 x 1/2" Hex Head TEK Screw
9	318700	1	Pipe Bracket
10	142600	1	1/2" Union
11	141237	1	Manifold Inlet
12	150301	2	#8-18 x 7/16" Phillips Pan Head TEK Screw
13	882231	1	Burner Box with Spreader
14	150301	2	#8-18 x 7/16" Phillips Pan Head TEK Screw
15	142600	1	1/2" Union
16	150300	2	#10 x 1/2" Hex Head TEK Screw
17	318700	1	Pipe Bracket
18	142823	1	1/2 x 40" Long Pipe
19	881367	1	1/2" Union Shut Off with Tail Piece
20	130401	2	330° Hi-Limit
21	150300	4	#10 x 1/2" Hex Head TEK Screw
22	318065	1	Burner Box Clean Out Cover
23	150300	4	#10-32 x 1/2 Hex Head TEK Screw
24	318099	1	Spreader Assembly ONLY

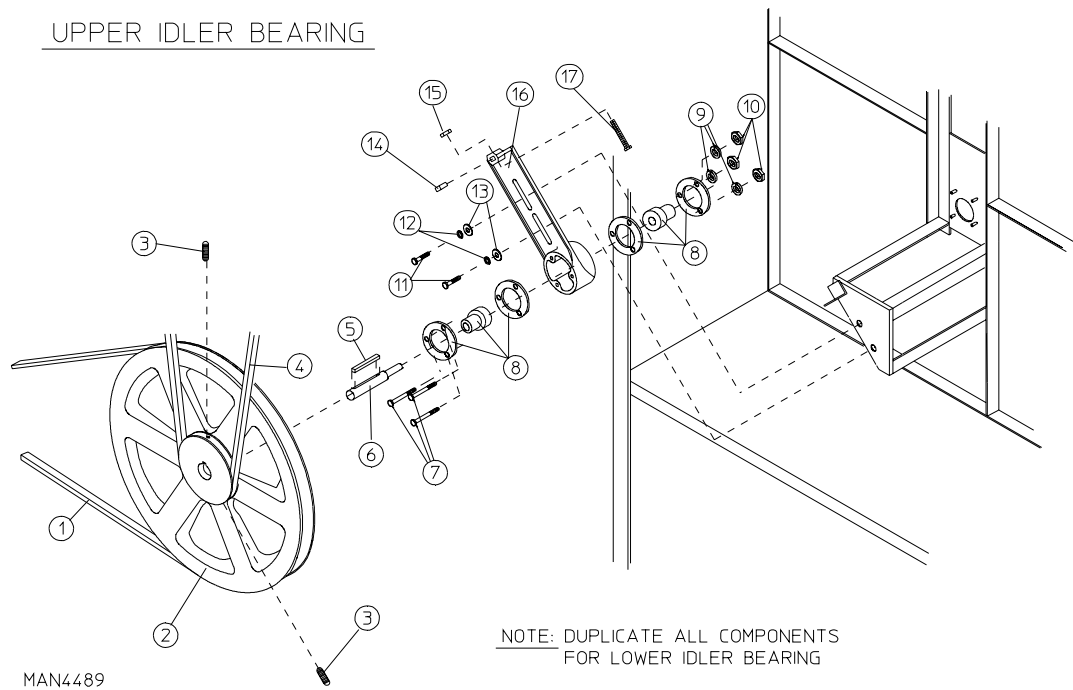
UPPER SAIL SWITCH ASSEMBLY



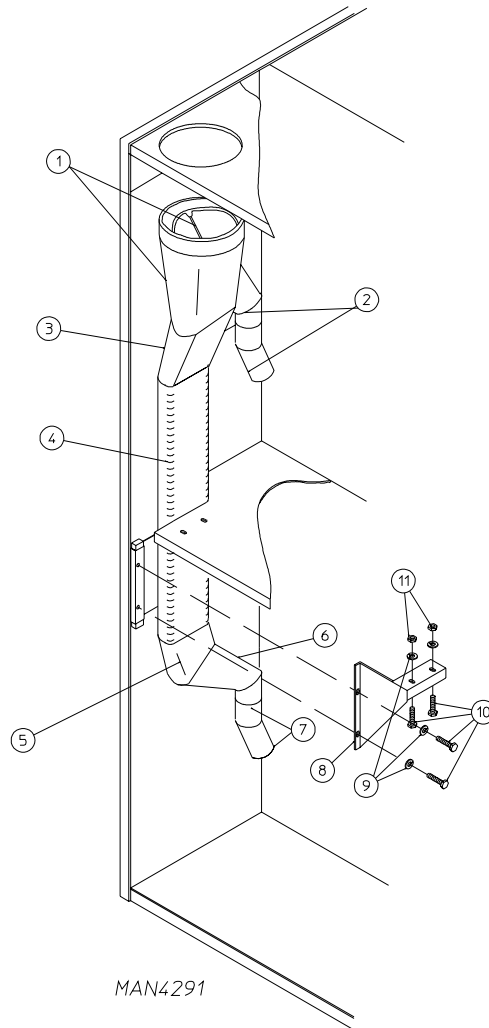
MAN0570

NOTE: DUPLICATE ALL COMPONENTS
FOR LOWER SAIL SWITCH ASSEMBLY

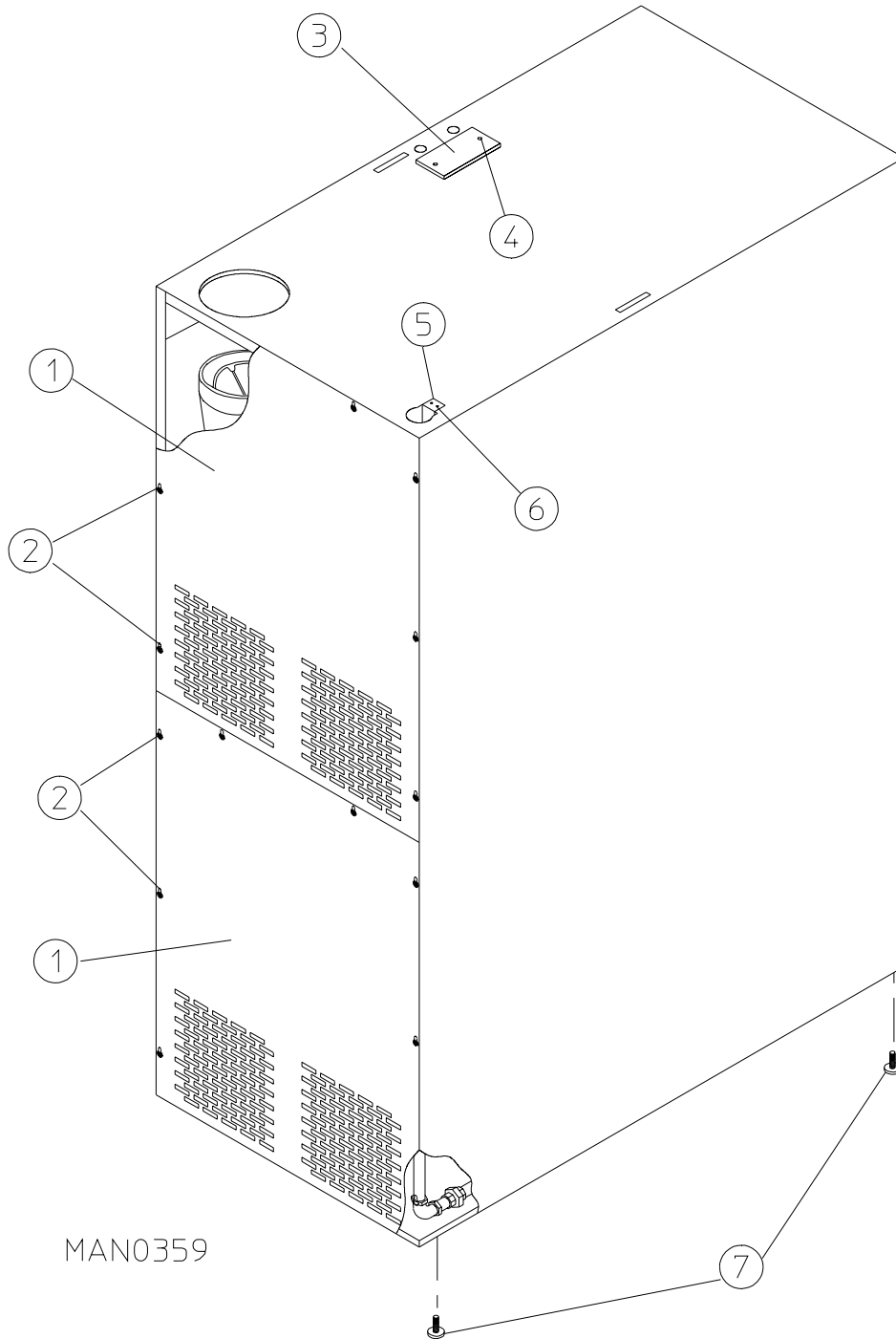
<u>Illus. No.</u>	<u>Part No.</u>	<u>Qty.</u>	<u>Description</u>
1	319206	1	Sail Switch Damper (embossed)
	802805	1	Sail Switch Rod and Damper Assembly (includes illus. no. 1 through 3)
2	105550	1	Sail Switch Rod
3	154002	1	1/8" Push-on Fastener
4	150303	2	#4 x 3/4" Pan Head "A" Machine Screw
5	122200	1	Sail Switch ONLY
	802807	1	Sail Switch Bracket Assembly (includes illus. no. 4 through 7)
6	319208	1	Sail Switch Bracket
7	154004	1	Twin Speed Nut
8	150001	2	#6-32 x 1/2" Phillips Round Head Machine Screw
9	153010	2	#6 Star Washer
10	152000	2	#6-32 Hex Nut



<u>Illus. No.</u>	<u>Part No.</u>	<u>Qty.</u>	<u>Description</u>
1	100144	1	4L-400 V-belt (idler to motor)
2	101129	1	9" x 2-1/2" Key
3	154301	2	5/16-18 x 5/16" Allen Set Screw
4	100100	1	5L-660 V-Belt (idler to basket [tumbler])
5	100705	1	3/16" x 3/16" x 1-3/8" Key
6	301850	1	5/8" x 3/4" Idler Shaft
7	150529	3	1/4-20 x 2-1/4" Carriage Bolt
8	100214	2	5/8" Flange Bearing
9	153007	3	1/4 Lock Washer
10	152002	3	1/4-20 Hex Nut
11	150617	2	3/8-16 x 1" Hex Head Machine Bolt
12	153005	2	3/8" Lock Washer
13	153004	2	3/8" Flat Washer
14	152020	1	5/16-18 Standard Square Nut
15	152004	1	5/16-18 Hex Nut
16	801010	1	Idler Bearing Assembly Complete (includes illus. no. 6 through 17)
	100406	1	Idler Bearing Mounting Bracket ONLY
17	150509	1	5/16-18 x 3" Hex Head Machine Bolt



<u>Illus No.</u>	<u>Part No.</u>	<u>Qty.</u>	<u>Description</u>
1	143535	1	Wye Branch
2	143536	2	6" Round x 45° Elbow
3	145327	1	6" Round x 7" Oval Straight Boot
4	145539	1	15-1/2" Long x 7" Oval Duct
5	143537	1	7" Oval x 45° Elbow
6	143538	1	6" Round x 7" Oval Straight Boot
7	143536	2	6" Round x 45° Elbow
	117505	6	Aluminum Duct Tape (sold by the foot)
8	851168	1	Exhaust Brace
9	153007	4	Split Lock Washer
10	150512	4	1/4 x 20 x 1/2" Bolts
11	152002	2	1/4 x 20" Hex Nut



<u>Illus No.</u>	<u>Part No.</u>	<u>Qty.</u>	<u>Description</u>
1	311541	2	Back Guard Assembly
2	150301	16	#8-18 x 7/16" Phillips Pan Head TEK Screw
3	315014	1	Plate Cover (Top Electric Box)
4	150301	2	#8-18 x 7/16" Phillips Pan Head TEK Screw
5	318702	1	Top Pipe Support Bracket
6	150300	2	#10 x 1/2" Hex Head TEK Screw
7	103500	4	Leveling Leg

