

DRYER

Repair Parts List

MODEL NUMBER

MDE11PDACW

BDSPARTS.COM

When requesting service or ordering parts, always provide the following information:

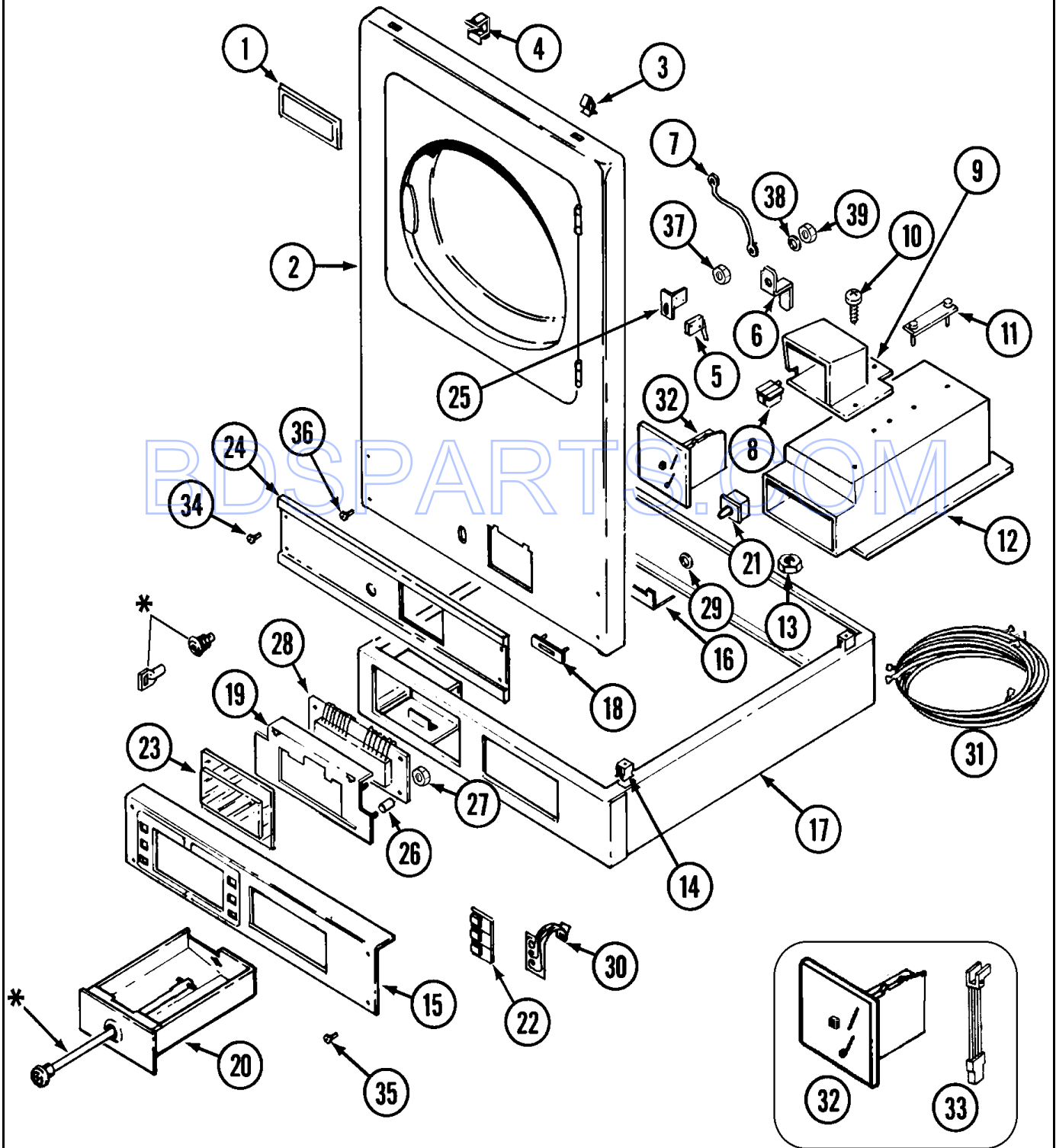
- Product Type
- Part Number
- Model Number
- Part Description

MAYTAG®

©2005 Maytag Services

Section: CONTROLS & UPPER PANEL

Model: MDE11PDACW



*Contact Your Commercial Distributor for Locks & Keys

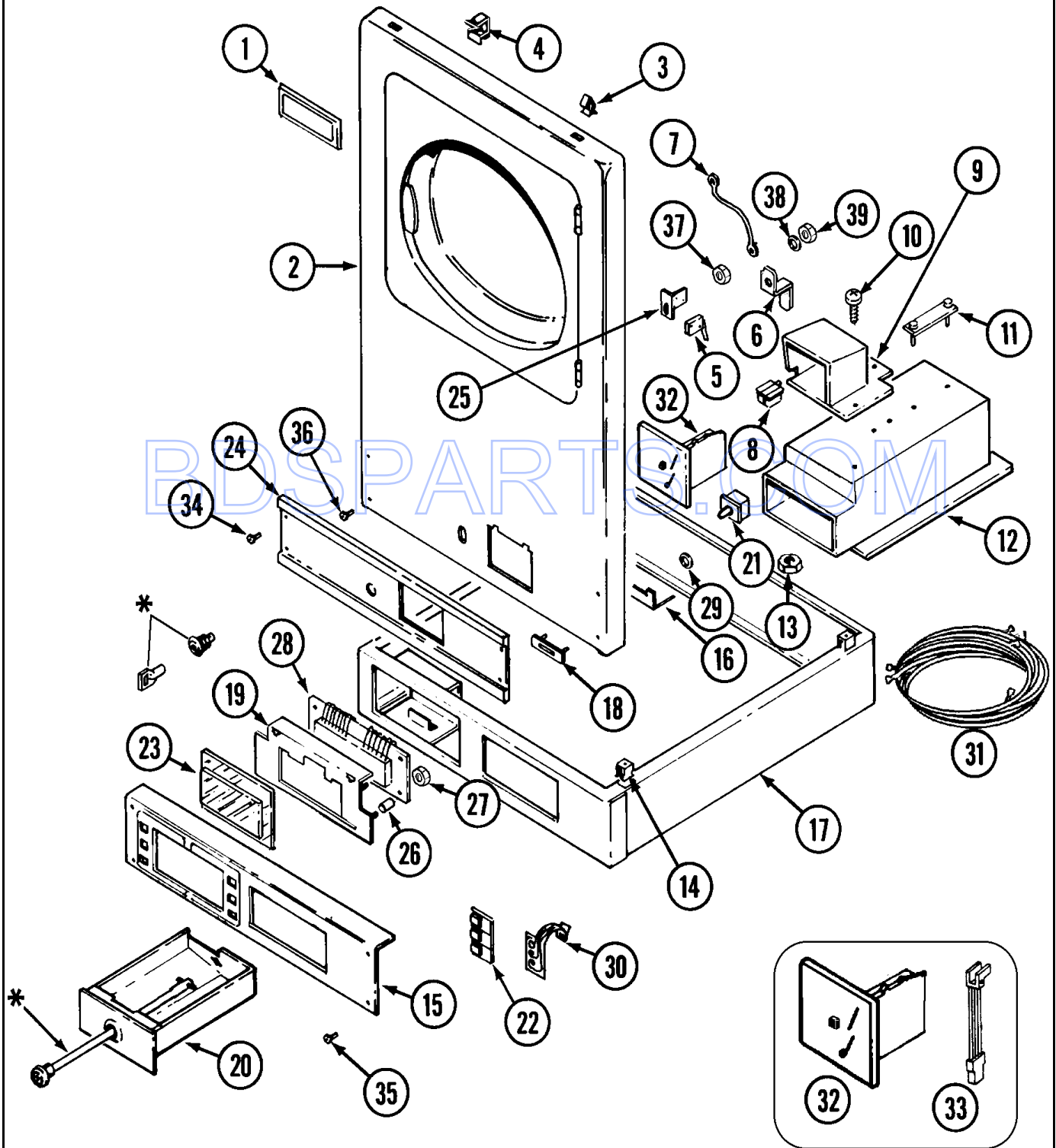
Section: CONTROLS & UPPER PANEL

No.	Part No.	Description	Series	Qty
1	N 307129	NAMEPLATE	A0	1
2	N 33001325	PANEL, UPPER (WHT) Note: PANEL, FRONT (UPR-WHT)	A0	1
2	33001447	PANEL, UPPER FRONT (WHT) Note: (UPR-WHT)	A1	1
3	212982	FASTENER, PANEL Note: SPRING, FASTENER	A0	2
4	310376	CLIP, WIRE HARNESS Note: CLIP, FASTENER	A0	2
5	306232	ACCESS SWITCH Note: SWITCH, ACCESS	A0	1
-	912012	SCREW Note: SCREW, SWITCH	A0	2
6	314625	LOCKING CAM Note: CAM, LOCKING	A0	1
7	306712	GROUND WIRE Note: GROUND WIRE, LOCK	A0	1
8	314635	COIN CHUTE Note: CHUTE, COIN	A0	1
9	N 306367	COIN DROP ASSEMBLY----NA Note: COVER, COIN DROP	A0	1
10	314654	CARRIAGE BOLT Note: BOLT, COIN DROP COVER	A0	2
11	N 203307	MTG. STRAP----NA Note: STRAP, MOUNTING	A0	1
-	N 212672	WASHER Note: LOCKWASHER, MOUNTING STRAP	A0	2
-	910387	LOCK WASHER Note: LOCKWASHER, VAULT ASSEMBLY	A0	1
12	N 308141	VAULT ASSY WHT Note: VAULT ASSEMBLY (WHT)	A0	1
-	N 212672	WASHER Note: WASHER, COVER BOLT	A0	2
13	052740	NUT Note: NUT, MOUNTING STRAP COVER	A0	4
14	310933	FASTENER Note: CLIP, SUPPORT ASSEMBLY	A0	4
15	N 33001023	EXTRUSION (LOWER)----NA Note: CONTROL, EXTRUSION (LWR)	A0	1
-	N 313561	SCREW----NA Note: SCREW, BRACKET	A0	1
16	314631	BRACKET Note: BRACKET, COIN DROP	A0	1
-	310632	SCREW Note: SCREW, BRACKET	A0	1
17	N 33001233	SUPPORT (WHT) Note: SUPPORT ASSEMBLY (WHT)	A0	1
18	306233	COIN ACCEPTOR STRAP Note: STRAP, COIN ACCEPTOR	A0	1
-	910186	SCREW Note: SCREW, PLATE	A0	3
19	33001201	PLATE, CONTROL MOUNTING Note: PLATE, CONTROL MOUNTING	A0	1
20	308143	COIN TRAY - WHT Note: TRAY, COIN (WHT)	A0	1
21	33001250	SWITCH, SENSOR Note: SWITCH, VAULT & SERVICE DOOR	A0	1
22	33001156	BUTTON Note: BUTTON, PUSH	A0	2
23	33001209	COVER, DISPLAY (LOWER) Note: COVER, DISPLAY	A0	1
24	N 33001024	EXTRUSION (UPPER)----NA Note: CONTROL, EXTRUSION (UPR)	A0	1
25	314634	ACCESS SWITCH BRACKET Note: BRACKET, ACCESS SWITCH	A0	1
26	33001204	STANDOFF, CIRCUIT BOARD Note: STAND-OFF, CONTROL BOARD	A0	4
27	912077	LOCKNUT Note: NUT, CONTROL BOARD	A0	4
28	33001290	CONTROL BOARD ASSEMBLY Note: BOARD, CONTROL	A0	1
-	33001249	BATTERY Note: BATTERY, CONTROL BOARD	A0	1
29	052659	HEX. NUT, #8-32 Note: NUT, COIN DROP	A0	2
30	33001200	SWITCH, MEMBRANE Note: -	A0	2
-	910768	CABLE STRAP-HARNESS TO BASE Note: STRAP, HARNESS	A0	1
31	N 33001572	HARNESS, WIRE (UPR) Note: (UPR)	17	1
31	33001409	WIRE HARNESS, MAIN (LOWER) Note: (LWR)	A1	1
31	N 33001573	HARNESS, WIRE (LWR) Note: (LWR)	17	1
31	33001408	WIRE HARNESS, MAIN (UPPER) Note: (UPR)	A1	1
31	33001030	HARNESS, WIRE (LOWER) Note: WIRE HARNESS, MAIN (LWR)	A0	1
-	314522	STRAIN RELIEF Note: GROMMET, STRAIN RELIEF	A0	1
31	N 33001194	HARNESS, WIRE (UPPER) Note: (UPR)	A0	1
32	308121	REJECTOR ASSY 25CENTS Note: REJECTOR ASSEMBLY (25 CENTS)	A0	1
33	33001025	SWITCH ASSY., OPTIC Note: OPTIC SWITCH ASSEMBLY	A0	1
-	315427	SCREW Note: SCREW, SWITCH ASSEMBLY	A0	1
34	315489	SCREW, TORX (LONG) Note: SCREW, FRONT PANEL	A0	3
34	215506	SCREW, TORX Note: SCREW, SWITCH ASSEMBLY	A0	2
35	215506	SCREW, TORX Note: SCREW, EXTRUSION (LWR)	A0	4
36	314666	SCREW Note: SCREW, PANEL (UPR)	A0	2
-	N 314653	RETAINER FOR FRONT PANEL Note: CLIP, CABINET SCREW	A0	2
37	212328	NUT, HEX Note: NUT, LOCK	A0	1

*Color Code (-)=Not Shown #=Series, Serial Prefix or Run No., N=Not Available

Section: CONTROLS & UPPER PANEL

Model: MDE11PDACW



*Contact Your Commercial Distributor for Locks & Keys

Section: CONTROLS & UPPER PANEL

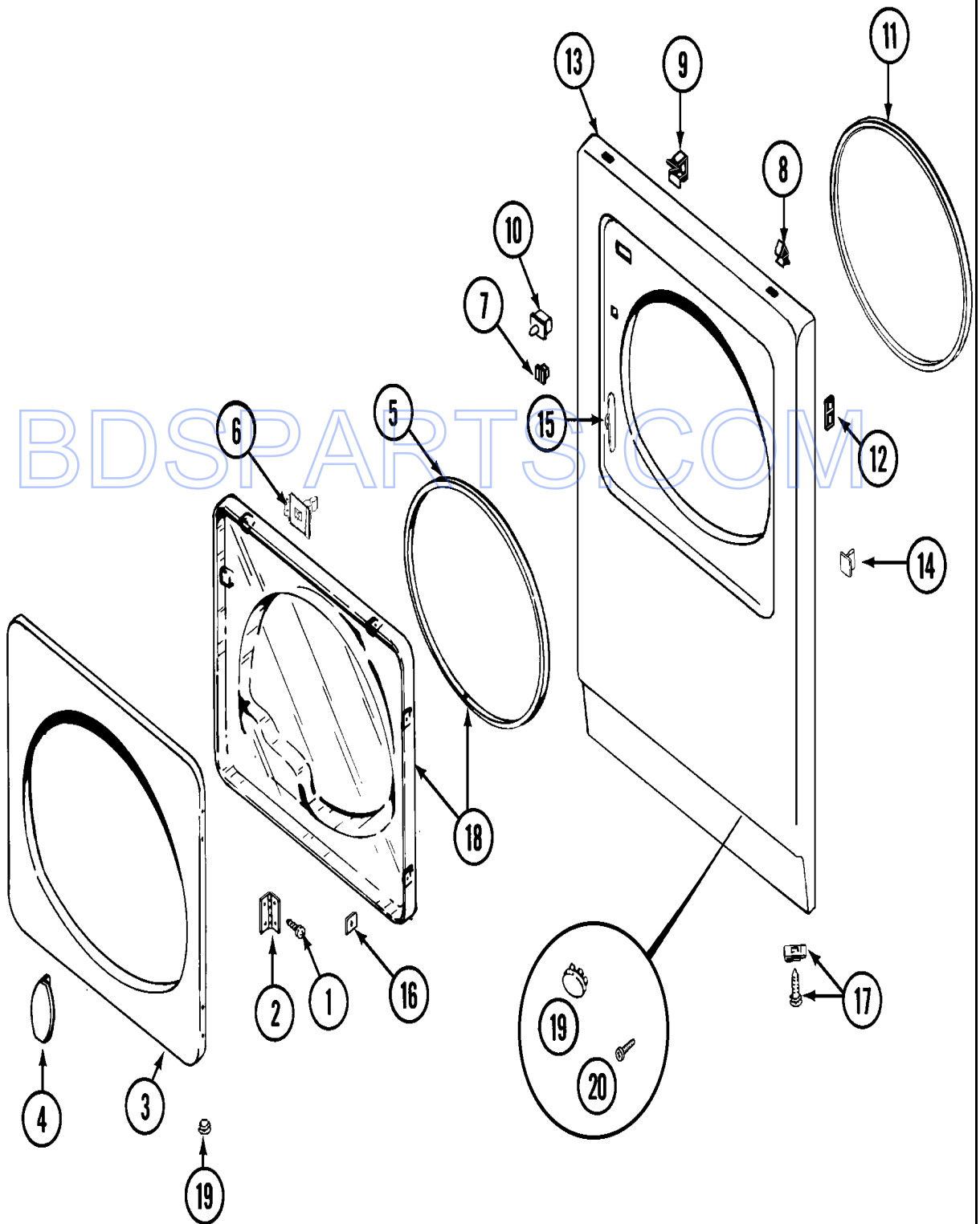
No.	Part No.	Description	Series	Qty
38	22001354	WASHER, LOCK Note: WASHER, LOCK	A0	1
39	22001355	NUT Note: NUT, LOCK	A0	1

BDSPARTS.COM

*Color Code (-)=Not Shown #=Series, Serial Prefix or Run No., N=Not Available

Section: DOOR

Model: MDE11PDACW



CD12-5

Section: DOOR

No.	Part No.	Description	Series	Qty
1	314062	SCREW Note: SCREW	A0	28
2	33001230	HINGE, DOOR	A0	4
3	314967	DOOR W/WIN CUT OUT OUTER WHT Note: PANEL, OUTER DOOR (WHT)	A0	2
4	314939	HANDLE Note: HANDLE, DOOR (WHT)	A0	2
5	33001192	SEAL, DOOR	A0	2
6	33001305	STRIKE, DOOR (W/BRACKET)	A0	2
7	304578	CATCH, DOOR (FEMALE)	A0	3
8	212982	FASTENER, PANEL Note: FASTENER, SPRING	A0	4
9	310376	CLIP, WIRE HARNESS Note: CLIP, CABLE	A0	6
10	305753	SWITCH, DOOR	A0	2
10	33001420	SWITCH, DOOR	A1	2
11	314937	SEAL, FRONT PANEL	A0	2
12	N 33001173	NUT, SPEED Note: CLIP, HINGE SCREW	A0	4
-	N 33001172	SCREW, PLASTIC Note: FASTENER, FRONT PANEL	A0	4
13	33001447	PANEL, UPPER FRONT (WHT) Note: (UPR-WHT)	A1	1
13	N 33001210	PANEL, FRONT (WHT) Note: PANEL, FRONT (LWR-WHT)	A0	1
13	N 33001325	PANEL, UPPER (WHT) Note: PANEL, FRONT (UPR-WHT)	A0	1
13	N 33001445	PANEL, LOWER FRONT (WHT) Note: (LWR-WHT)	A1	1
14	N 33001174	PLUG, DOOR CATCH	A0	1
15	33001175	COVER, HINGE HOLE (WHT)	A0	2
16	313910	CLIP, DOOR LINER TO OUTER PNL Note: CLIP, INNER DOOR SCREW	A0	18
17	204439	SCREW & FSTNER ASSY(FRT.PANEL) Note: SCREW & FASTNER ASSEMBLY	A0	1
17	314666	SCREW Note: SCREW, PANEL (UPR)	A0	2
-	N 314653	RETAINER FOR FRONT PANEL Note: CLIP, CABINET SCREW	A0	2
18	33001203	PANEL, INNER (W/SEAL) Note: PANEL, CLEAR INNER (W/SEAL)	A0	2
19	33001132	PLUG, SIGHT HOLE (WHT)	A0	1
20	315489	SCREW, TORX (LONG) Note: SCREW, SIGHT HOLE	A0	1

*Color Code (-)=Not Shown #=Series, Serial Prefix or Run No., N=Not Available

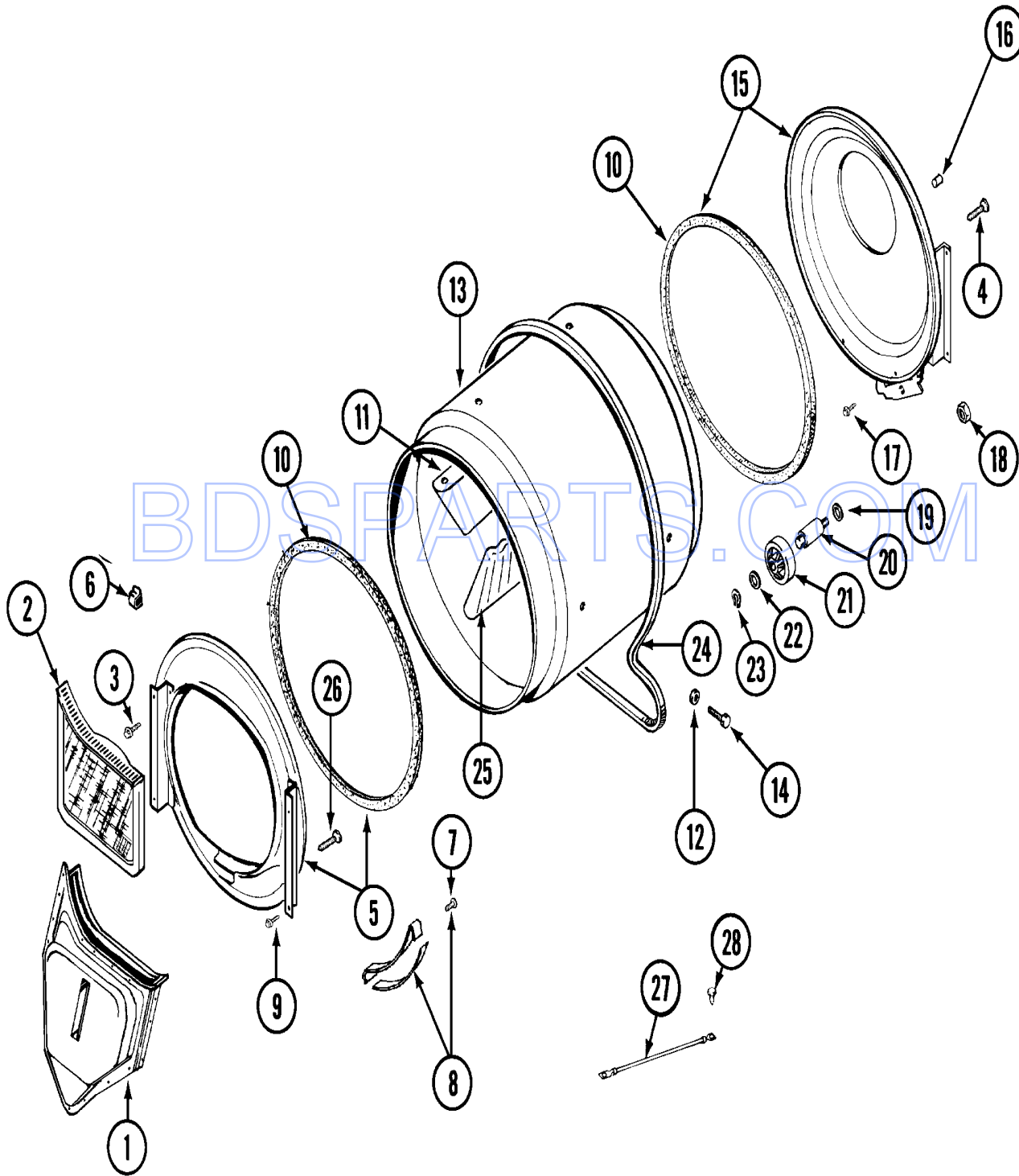
Section: REAR

No.	Part No.	Description	Series	Qty
1	N 33001245	SCREW----NA Note: SCREW, GROUND STRAP	A0	2
2	310632	SCREW Note: SCREW, TERMINAL BLOCK	A0	2
3	312905	COVER, TERMINAL	A0	2
4	N 313561	SCREW----NA Note: SCREW, TERMINAL COVER	A0	8
5	312209	SCREW, #10-24 X 3/4 INCH Note: SCREW, TERMINAL BRACKET	A0	4
6	312184	STRAP, GROUND Note: STRAP, GROUNDING	A0	2
7	400008	BLOCK, TERMINAL	A0	2
8	312904	BRACKET, TERMINAL BLOCK Note: BRACKET, TERMINAL	A0	2
9	311093	WASHER, 7/32 INCH Note: WASHER, BRASS	A0	2
9	311270	WASHER, TERMINAL BLOCK Note: WASHER, TERMINAL BLOCK	A0	6
10	311484	NUT, TERMINAL BLOCK	A0	6
11	211294	SCREW Note: SCREW, ACCESS COVER	A0	2
11	313559	SCREW Note: SCREW, ACCESS COVER	A0	2
12	N 314943	COVER PLATE Note: PLATE, TOP COVER	A0	2
13	33001165	COVER, TOP (WHT) Note: TOP COVER ASSEMBLY (WHT)	A0	1
14	303846	SCREW & WASHER ASSY. Note: SCREW & WASHER ASSEMBLY	A0	1
15	N 33001327	CABINET (WHT) Note: CABINET (LWR-WHT)	A0	1
15	N 33001329	CABINET (WHT) Note: CABINET (UPR-WHT)	A0	1
-	310632	SCREW Note: SCREW, CABINET	A0	4
16	N 33001233	SUPPORT (WHT) Note: SUPPORT ASSEMBLY (WHT)	A0	1
17	310933	FASTENER Note: FASTENER, SPACER ASSEMBLY	A0	2
18	302699	LEG, ADJUSTABLE (W/NUT)	A0	4
19	210684	FOOT, RUBBER	A0	4
20	210385	NUT, LOCK Note: NUT, ADJUSTABLE LEG	A0	4
21	312951	COVER, ACCESS	A0	2
22	N 911052	SCREW Note: SCREW, SUPPORT	A0	1
22	310632	SCREW Note: SCREW, SUPPORT	A0	5
23	311155	GROUND WIRE Note: GROUND WIRE	A0	1
24	301548	CLAMP, GROUND (W/SCREW) Note: CLAMP, GROUND (W/SCREW)	A0	1
-	313122	SCREW - BAFFLE TO TUMBLER Note: SCREW, CLAMP	A0	1
25	213007	SCREW, CABINET Note: SCREW, CABINET SIDES	A0	12
26	313559	SCREW Note: SCREW, TOP COVER PLATE	A0	2
27	12001279	KIT, SURGE SUPPRESSOR Note: SURGE SUPPRESSOR KIT	19	2
27	12001279	KIT, SURGE SUPPRESSOR Note: SURGE SUPPRESSOR KIT	17	2

*Color Code (-)=Not Shown #=Series, Serial Prefix or Run No., N=Not Available

Section: TUMBLER

Model: MDE11PDACW



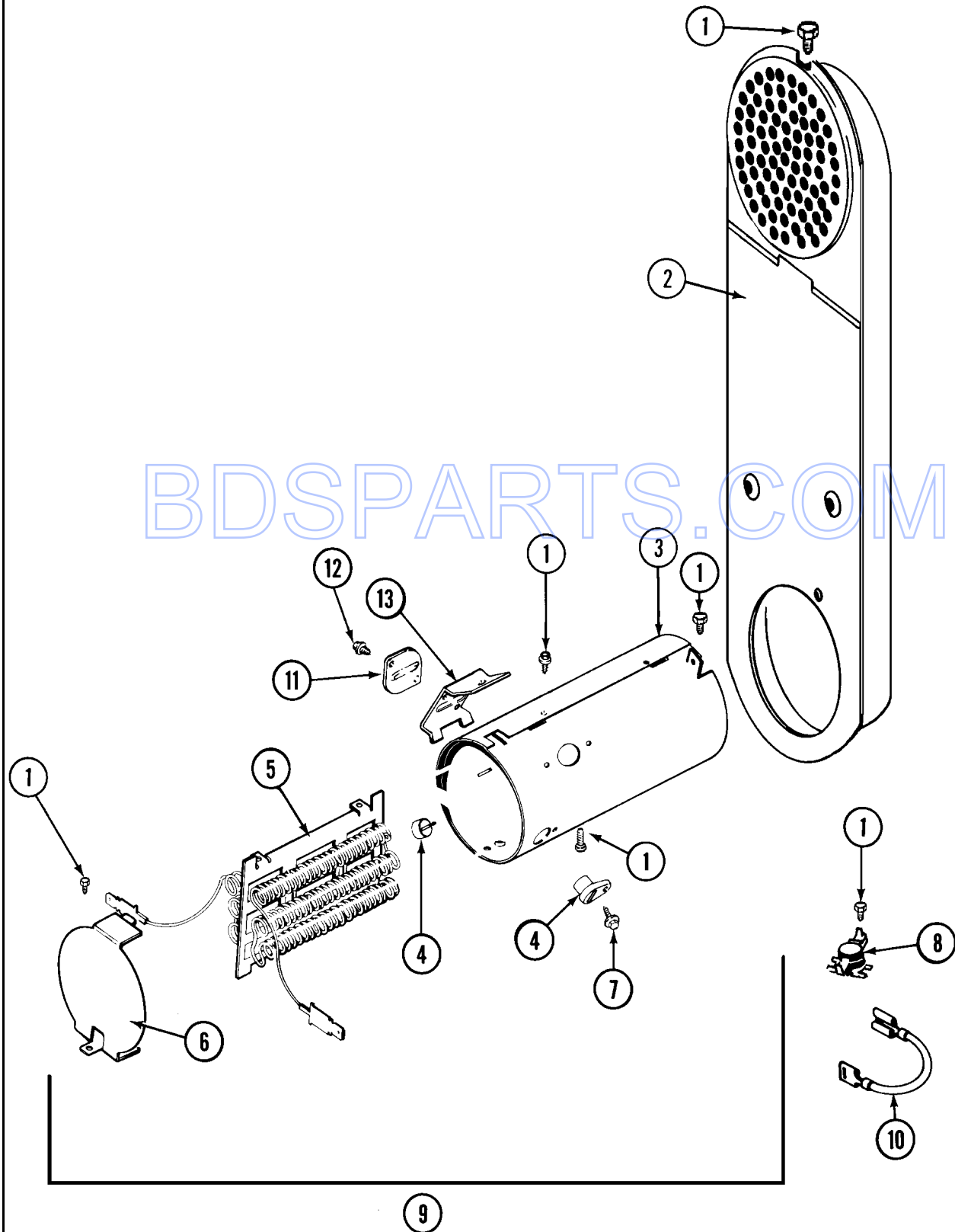
Section: TUMBLER

No.	Part No.	Description	Series	Qty
1	33001016	DUCT ASSY., OUTLET Note: OUTLET DUCT ASSEMBLY	A0	2
2	33001170	FILTER, LINT	A0	2
3	N 313764	SCREW Note: SCREW, TUMBLER SUPPORT	A0	8
4	N 313561	SCREW----NA Note: SCREW, TUMBLER FRONT & BACK	A0	4
5	33001179	FRONT, TUMBLER (W/SEAL) Note: FRONT, TUMBLER (W/SEAL)	A0	2
6	310376	CLIP, WIRE HARNESS Note: CLIP, CABLE	A0	2
7	210720	RIVET	A0	8
8	306508	TUMBLER BEARING KIT Note: TUMBLER BEARING KIT	A0	4
9	310632	SCREW Note: SCREW, TUMBLER FRONT	A0	6
10	314820	SEAL, TUMBLER	A0	4
11	33001012	BAFFLE (SHORT)	A0	2
12	314158	WASHER Note: WASHER, BAFFLE SCREW	A0	12
13	33001108	DRYER TUMBLER, W/O BAFFLES	A0	2
14	310759	SCREW Note: SCREW, TUMBLER BAFFLE	A0	12
15	33001178	BACK, TUMBLER (W/SEAL)	A0	2
16	N 313915	COVER, THREAD	A0	8
17	310632	SCREW Note: SCREW, TUMBLER BACK	A0	6
18	312538	NUT, ROLLER SHAFT	A0	4
19	313347	WASHER, SPRING (ROLLER SHAFT) Note: WASHER, SPRING	A0	4
20	312948	SHAFT, TUMBLER ROLLER	A0	4
21	303373	BEARING & ROLLER ASSEMBLY Note: ROLLER (W/BEARING)	A0	4
22	312535	WASHER, ROLLER SHAFT	A0	4
23	410233	RING, RETAINING Note: RING, RETAINING	A0	4
24	312959	BELT, TUMBLER & MOTOR Note: BELT, TUMBLER	A0	2
25	33001004	BAFFLE, TALL Note: BAFFLE (TALL)	A0	4
26	314110	SCREW, INLET DUCT Note: SCREW, OUTLET DUCT	A0	8
27	901220	WIRE, GROUND Note: GROUND WIRE	A0	2
28	910343	SCREW, GROUND WIRE	A0	2

*Color Code (-)=Not Shown #=Series, Serial Prefix or Run No., N=Not Available

Section: HEATER

Model: MDE11PDACW



CD15-2

Section: HEATER

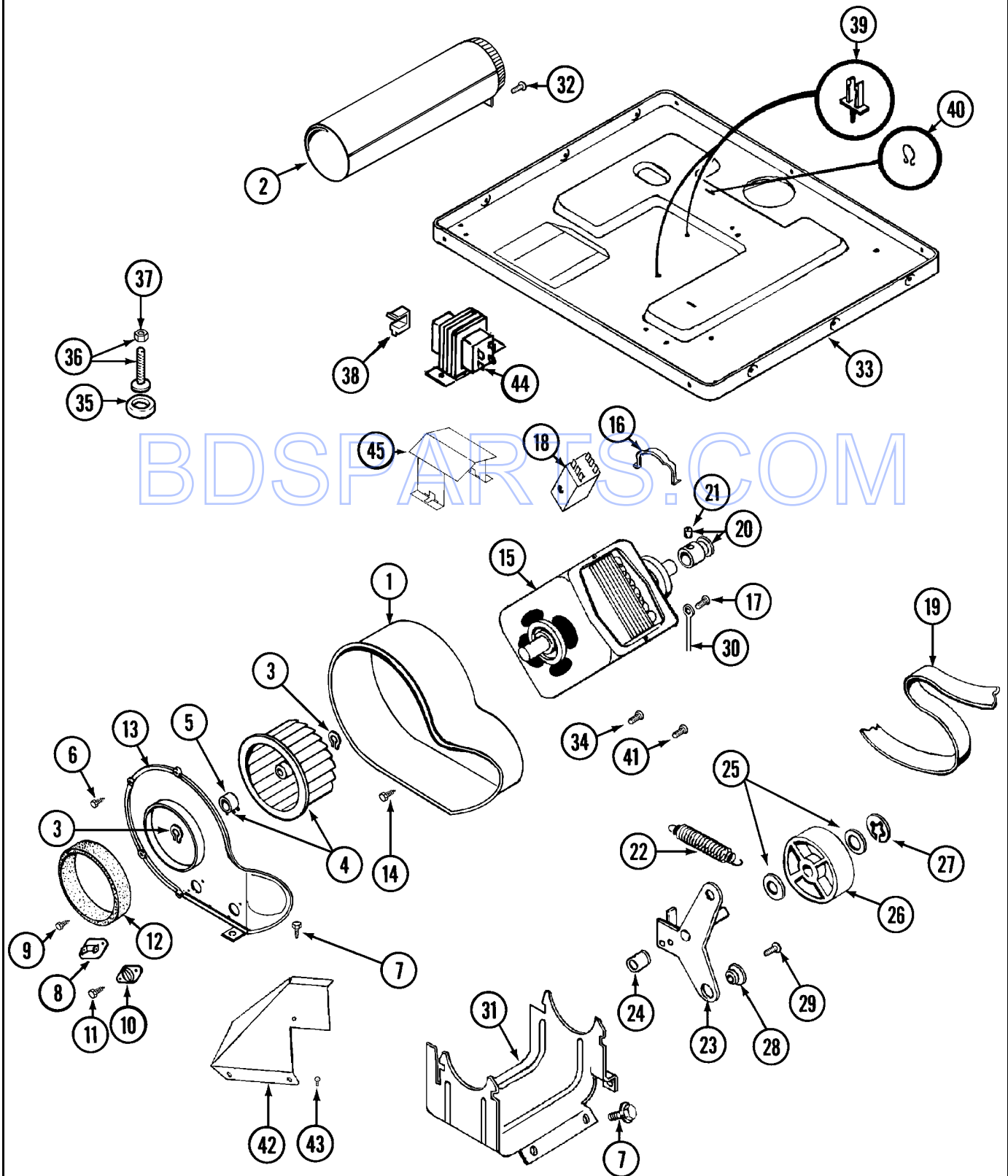
No.	Part No.	Description	Series	Qty
1	211294	SCREW Note: SCREW, DUCT	A0	24
2	308503	INLET DUCT ASSY. Note: INLET DUCT ASSEMBLY	A0	2
3	314995	HEATER ENCLOSURE Note: ENCLOSURE, HEATER	A0	2
4	314998	INSULATOR, TERMINAL	A0	4
5	308614	HEATER SUB-ASSEMBLY Note: HEATER SUB-ASSEMBLY (240V) (W/ 1, 3, 4, & 7)	A0	2
-	308613	HEATER SUB-ASSEMBLY (208V) Note: HEATER SUB-ASSEMBLY (208V)	A0	2
6	314999	SHIELD, RADIANT	A0	2
7	N 314554	SCREW Note: SCREW, TERMINAL INSULATOR	A0	4
8	303396	THERMOSTAT, HI-LIMIT (ELEC)	A0	2
9	307179	HEATER ASSEMBLY(COMPLETE 240V) Note: HEATER ASSEMBLY (240V)	A1	2
9	308259	HEATER ASSY 240V Note: HEATER ASSEMBLY (240V)	A0	2
10	307173	WIRE, JUMPER	A0	2
11	307473	FUSE, THERMAL	A1	1
12	314848	SCREW	A1	2
13	315346	BRACKET, THERMAL FUSE	A1	1
-	308590	CONVERSION KIT (240V TO 208V) Note: CONVERSION KIT (240V TO 208V)	A0	2

BDSPARTS.COM

*Color Code (-)=Not Shown #=Series, Serial Prefix or Run No., N=Not Available

Section: MOTOR DRIVE

Model: MDE11PDACW



BDS PARTS.COM

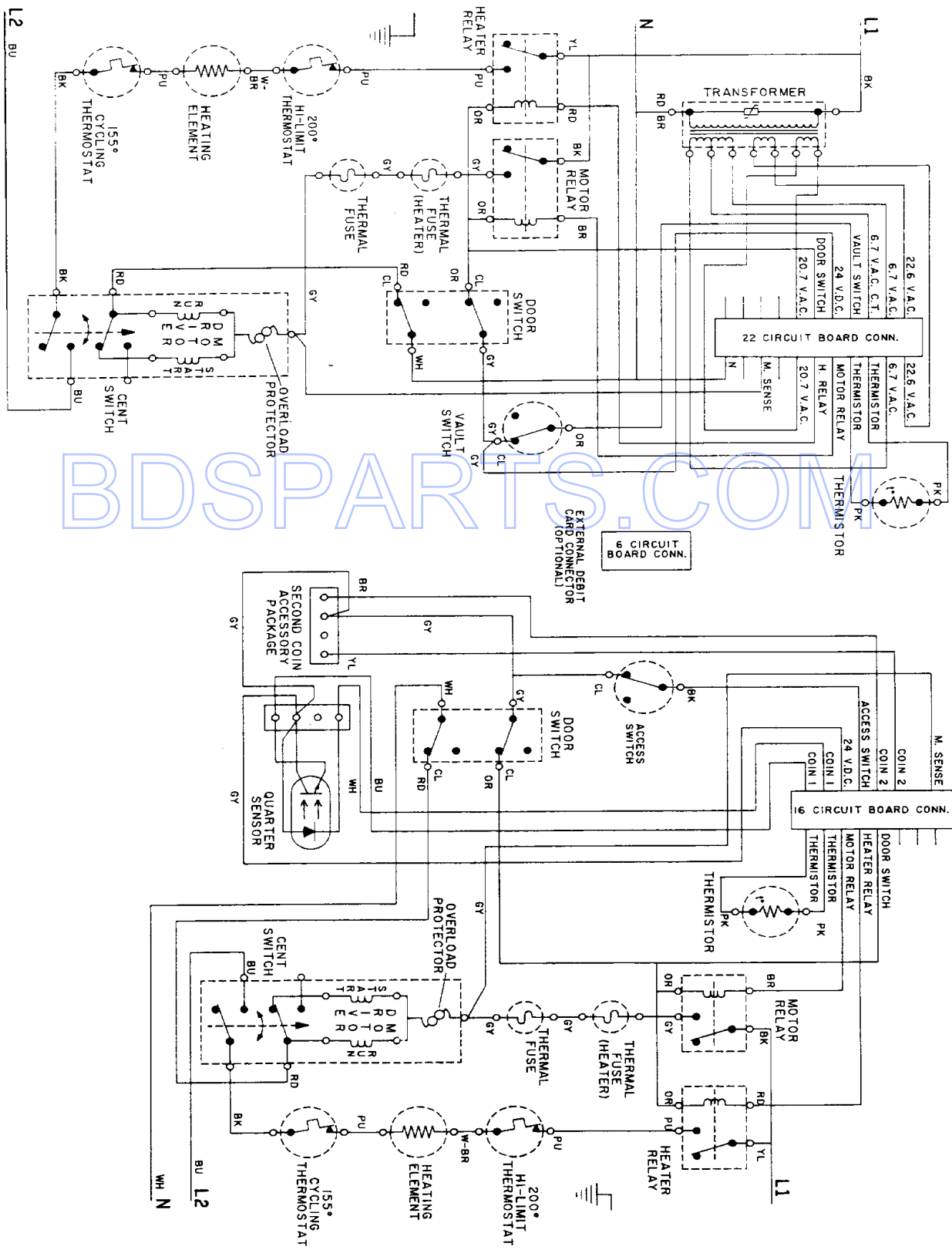
Section: MOTOR DRIVE

No.	Part No.	Description	Series	Qty
1	312893	HOUSING, BLOWER	A0	2
2	303442	EXHAUST DUCT ASSY. Note: EXHAUST DUCT ASSEMBLY	A0	2
3	410233	RING, RETAINING	A0	4
4	303836	BLOWER WHEEL ASSEMBLY & CLAMP Note: BLOWER WHEEL ASSEMBLY	A0	2
5	312967	CLAMP, BLOWER HOUSING Note: CLAMP, BLOWER WHEEL	A0	2
6	312961	SCREW Note: SCREW, HOUSING COVER	A0	12
7	N 313561	SCREW----NA Note: SCREW, HOUSING COVER	A0	6
8	307208	THERMISTOR, TEMP. CONTROL	A0	2
8	303391	CYCLING THERMOSTAT 155 DEG. Note: THERMOSTAT, CYCLING (155 DEG)	A0	2
9	211294	SCREW Note: SCREW, THERMOSTATS	A0	5
10	306604	CUT-OFF, THERMAL Note: CUT-OFF, THERMAL	A0	2
11	314848	SCREW Note: SCREW, THERMAL CUT-OFF	A0	4
12	312901	SEAL, BLOWER Note: SEAL, HOUSING COVER	A0	2
13	314778	COVER FOR BLOWER Note: COVER, BLOWER HOUSING	A0	2
14	314818	SCREW Note: SCREW, BLOWER HOUSING	A0	8
15	303358	MOTOR	A0	2
16	015825	CLIP, MOTOR	A0	4
17	910343	SCREW, GROUND WIRE	A0	2
18	N 306207	SWITCH, MOTOR START-PROD. Note: SWITCH, MOTOR EXTERNAL START (PROD. # 303358-8 & 303358-9)	A0	2
18	303879	SWITCH, MOTOR STARTPROD. Note: SWITCH, MOTOR EXTERNAL START (PROD. # 303358 & 303358-6)	A0	2
18	303877	SWITCH, MOTOR Note: SWITCH, MOTOR EXTERNAL START (PROD. # 303358-2, 303358-4 & 303358-7)	A0	2
19	312959	BELT, TUMBLER & MOTOR Note: BELT, TUMBLER	A0	2
20	305185	PULLEY, MOTOR (W/SET SCREW)	A0	2
21	053241	SET SCREW, PULLEY Note: SCREW, SET	A0	2
22	303945	IDLER SPRING ASSEMBLY Note: IDLER SPRING ASSEMBLY	A0	2
23	303363	IDLER ARM & SHAFT ASSY. Note: IDLER ARM & SHAFT ASSEMBLY	A0	2
24	313582	SPACER, IDLER BRACKET	A0	2
25	312527	WASHER, IDLER SHAFT (QTY-1)	A0	4
26	303705	PULLEY, IDLER Note: PULLEY, IDLER (W/BEARING)	A0	2
27	312958	RETAINING RING, IDLER SHAFT Note: RING, RETAINING	A0	2
28	N 312894	SLEEVE, IDLER ARM	A0	2
29	014874	SCREW Note: SCREW, IDLER ARM	A0	2
30	901220	WIRE, GROUND Note: GROUND WIRE	A0	2
31	N 312897	SUPPORT, MOTOR	A0	2
32	310632	SCREW Note: SCREW, EXHAUST DUCT	A0	2
33	306530	BASE WELD ASSEMBLY Note: (LWR)	A0	1
33	306261	BASE ASSEMBLY Note: BASE ASSEMBLY (UPR)	A0	1
34	211294	SCREW Note: SCREW, GROUND WIRE	A0	2
35	210684	FOOT, RUBBER	A0	4
36	302699	LEG, ADJUSTABLE (W/NUT)	A0	4
37	210385	NUT, LOCK Note: NUT, ADJUSTABLE LEG	A0	4
38	310376	CLIP, WIRE HARNESS Note: CLIP, CABLE	A0	6
39	315471	RETAINER, WIRE Note: RETAINER, WIRE HARNESS	A0	6
40	410490	SPRING, WIRE HARNESS	A0	5
41	312961	SCREW Note: SCREW, SPACER	A0	2
42	315122	COVER, THERMOSTAT	A0	2
43	310632	SCREW Note: SCREW, THERMOSTAT COVER	A0	4
44	33001205	TRANSFORMER	A0	1
45	315218	SHIELD, XFMR Note: SHIELD, TRANSFORMER	A0	1
-	211294	SCREW Note: SCREW, TRANSFORMER	A0	1

*Color Code (-)=Not Shown #=Series, Serial Prefix or Run No., N=Not Available

Section: WIRING INFORMATION

Model: MDE11PDACW



BDSPARTS.COM

