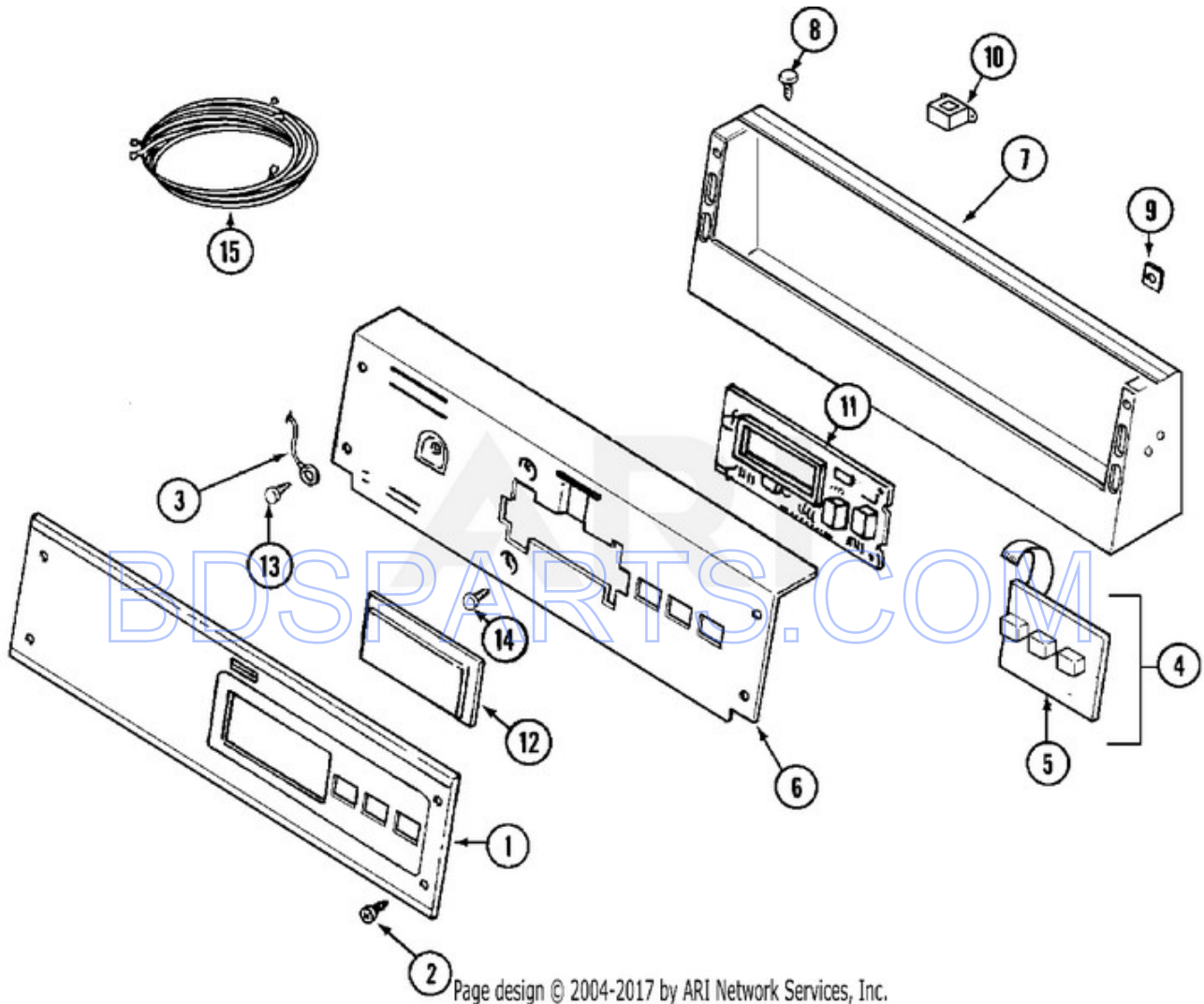
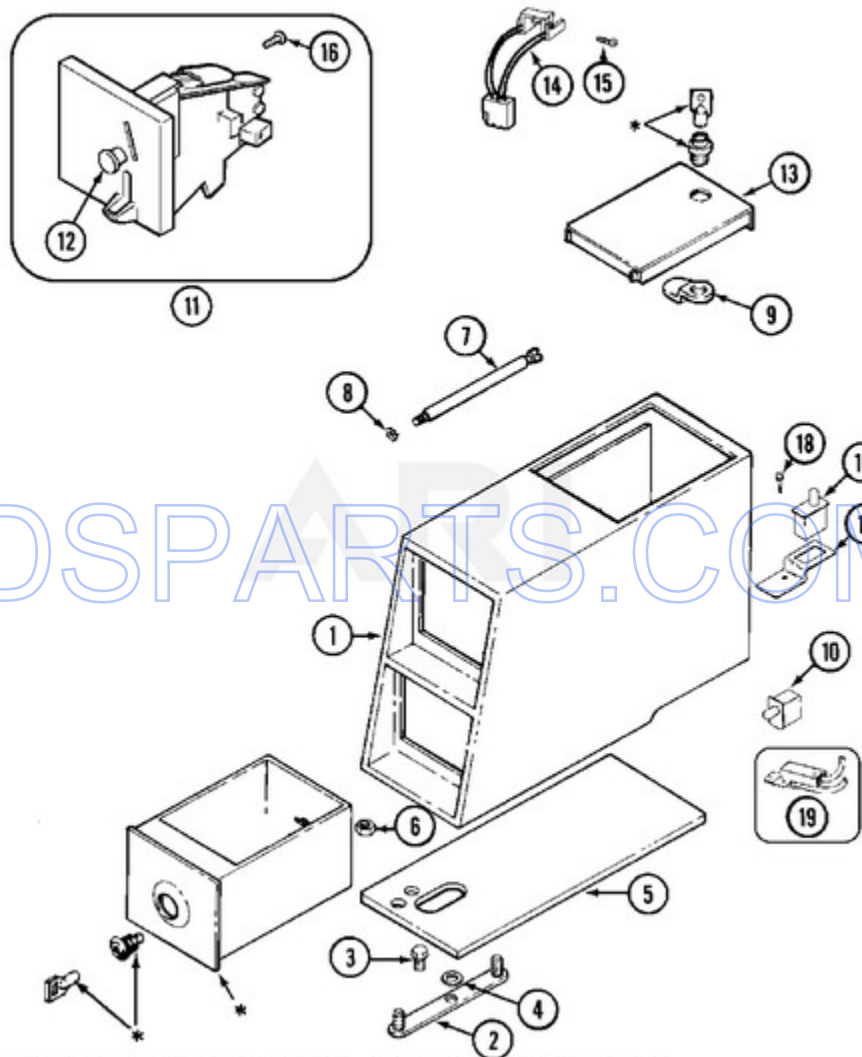


MDG21PDDWW - 01 - CONTROL PANEL



Ref #	Part #	Description	Qty	Note
1	33002941	Facia - PD/PS (CONTROL PANEL)	1	Series 10
2	215506	SCREW, CONTROL PANEL	4	Series 10
3	22001959	WIRE, GROUND	1	Series 10
4	215527	SCREW, SWITCH	2	Series 10
4	306694	BACKUP PLATE WITH SWITCH	1	Series 10
5	33002863	BUTTON, PUSH	1	Series 10
6	22002954	DEFLECTOR, WATER (W/ADHESIVE)	1	Series 10
6	33002519	BRACKET, BACK (WHT)	1	Series 10
7	22003089	CONSOLE (WHT)	1	Series 10
8	22001996	SCREW, CONSOLE	5	Series 10
9	215003	CLIP, SCREW	2	Series 10
10	22001960	TRANSFORMER	1	Series 10
10	22002925	SCREW, TRANSFORMER	2	Series 10
11	33001204	STANDOFF, CIRCUIT BOARD	4	Series 10
11	33002358	BOARD, CONTROL	1	Series 10
12	22001962	COVER, DISPLAY	1	Series 10
13	211252	SCREW, GROUND WIRE	1	Series 10
14	215526	SCREW, CONTROL BOARD	1	Series 10
15	22003818	WIRE HARNESS	1	Series 10
15	33001878	WIRE HARNESS, MAIN	-	Series 10

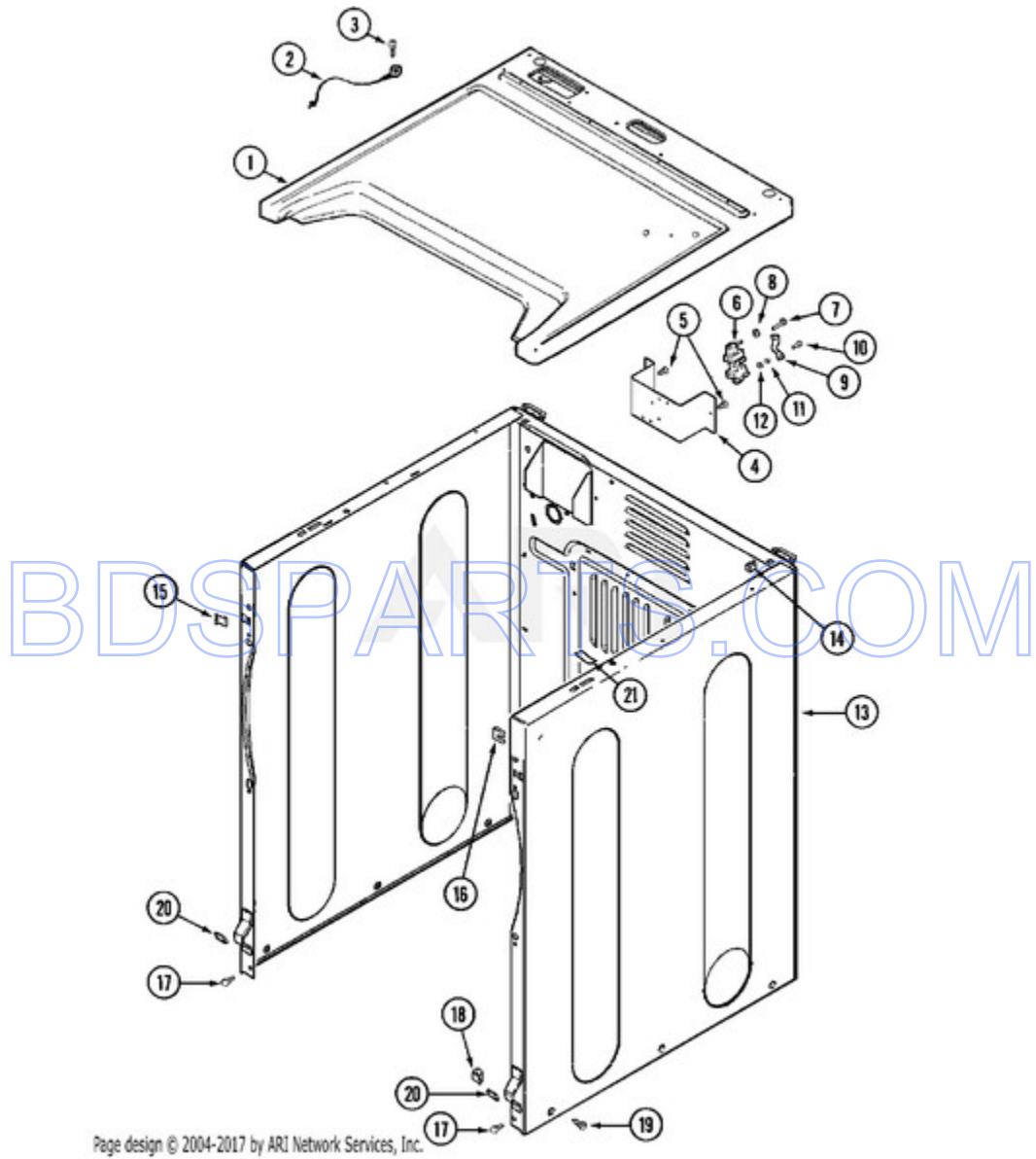
MDG21PDDWW - 02 - CONTROL CENTER



\* CONTACT YOUR COMMERCIAL LAUNDRY DISTRIBUTOR  
Page design © 2004-2017 by ARI Technik Service, LLC

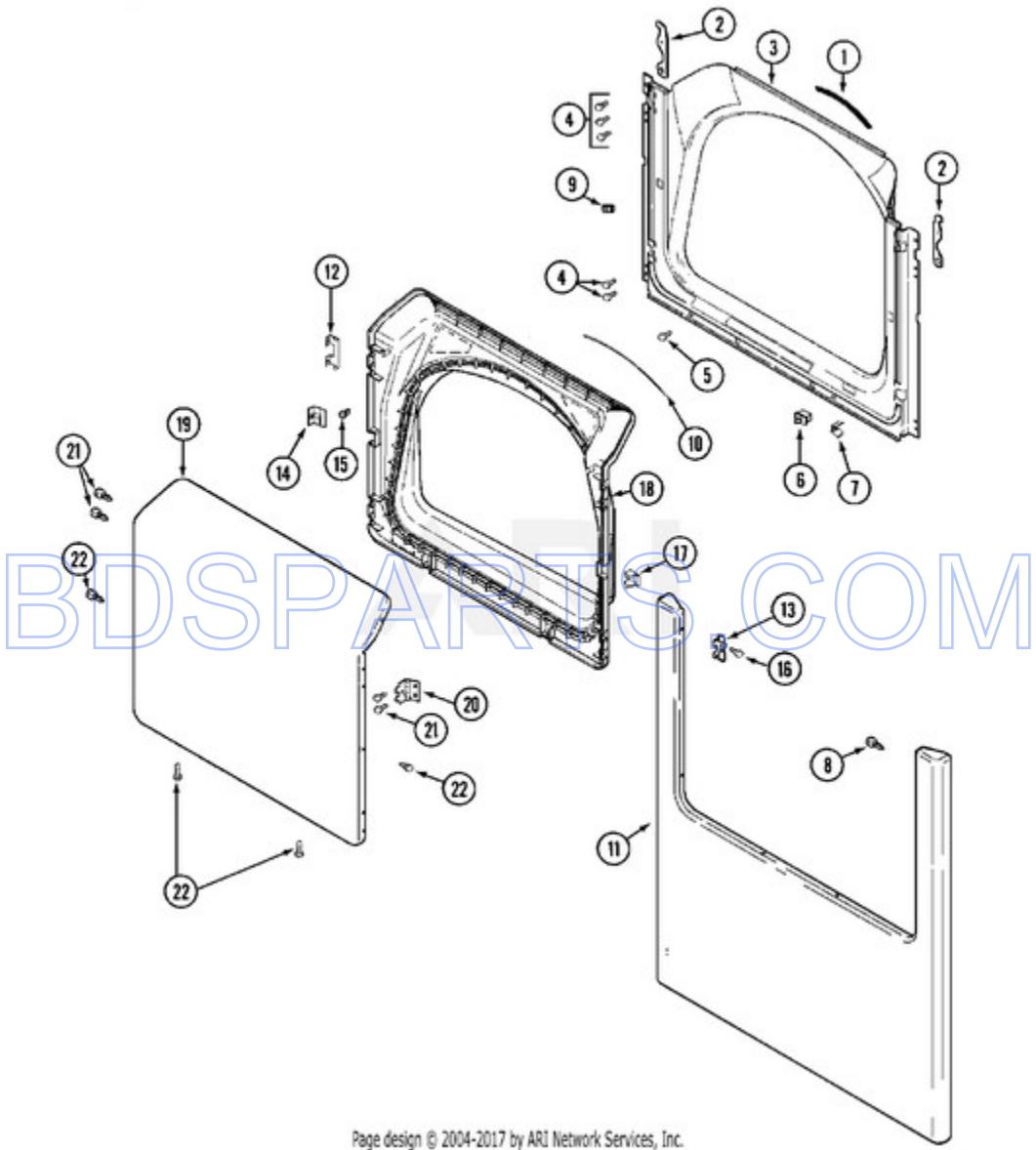
Ref #	Part #	Description	Qty	Context	Note	MSRP
1	22001069	SCREW----NA	2	Series	10	
1	22002480	VAULT, COIN (WHT)PD COIN DROP SUPPLIED BY DIST.	1	Series	10	
2	22001810	STRAP, MOUNTING	1	Series	10	
3	22002925	SCREW, MOUNTING STRAP	1	Series	10	
4	910309	WASHER, STRAP SCREW	1	Series	10	
5	22002072	GASKET, CONTROL CENTER (WHT)	-	Series	10	
6	Y052740	NUT, CASE MOUNTING	2	Series	10	
7	213035	BOLT, LOCKING	2	Series	10	
8	910181	LOCKWASHER, LOCKING BOLT	2	Series	10	
9	22003677	LOCKING CAM	1	Series	10	
10	33001250	SWITCH, SENSOR	2	Series	10	
11	22003678	ASSY, COIN DROP U.S. \$0.25	1	Series	10	
11	22004112	COIN DROP GREENWALD US.25	1	Series	10	
11	33002647	SINGLE FACEPLATE ASSEMBLY	1	Series	10	
12	216200	BUTTON, RETURN	1	Series	10	
13	22003679	TIMER ACCESS DOOR ASSY (WHITE)	1	Series	10	
14	22001965	SWITCH ASSY., OPTIC	1	Series	10	
15	314665	SCREW, OPTIC SWITCH	2	Series	10	
16	216068	SCREW	3	Series	10	
17	22001404	BRACKET, SWITCH	1	Series	10	
18	212276	SCREW, SWITCH BRACKET	1	Series	10	
19	22001966	HARNES, SENSOR SWITCH	1	Series	10	

MDG21PDDWW - 03 - CABINET-FRONT



Ref #	Part #	Description	Qty	Context	Note	MSRP
1	33002629	COVER, TOP (WHT-AS PK)	1	Series	10	
2	22001959	WIRE, GROUND	1	Series	10	
3	210186	SCREW, GROUND WIRE	1	Series	10	
4	NLA	BRACKET, TERMINAL BLOCK----NA	-	Series	10	
5	22001995	SCREW, TERMINAL BLOCK BRACKET	-	Series	10	
6	33001244	BLOCK, TERMINAL	-	Series	10	
6	33002106	SHIELD, TERMINAL BLOCK	-	Series	10	
7	Y312209	SCREW, TERMINAL BLOCK	-	Series	10	
8	Y311270	WASHER, TERMINAL BLOCK	3	Series	10	
9	Y312184	STRAP, GROUND	1	Series	10	
10	Y312209	SCREW, No.10-24 X 3/4 INCH-----O	3	Series	10	
11	311484	NUT, TERMINAL BLOCK	6	Series	10	
12	311093	WASHER, 7/32 INCH	6	Series	10	
13	22003639	CABINET ASSY. (WHT AS PK)	1	Series	10	
14	310933	FASTENER	2	Series	10	
15	22002049	CLIP	2	Series	10	
16	213280	RETAINER, SHROUD	2	Series	10	
17	22001995	SCREW, CABINET	2	Series	10	
18	Y310376	CLIP, WIRE HARNESS	1	Series	10	
19	22003409	SCREW, CABINET (TRUSS)	6	Series	10	
20	22002239	CLIP, LOWER FRONT PANEL	2	Series	10	
21	33001836	STRAP, TOP COVER SUPPORT	1	Series	10	

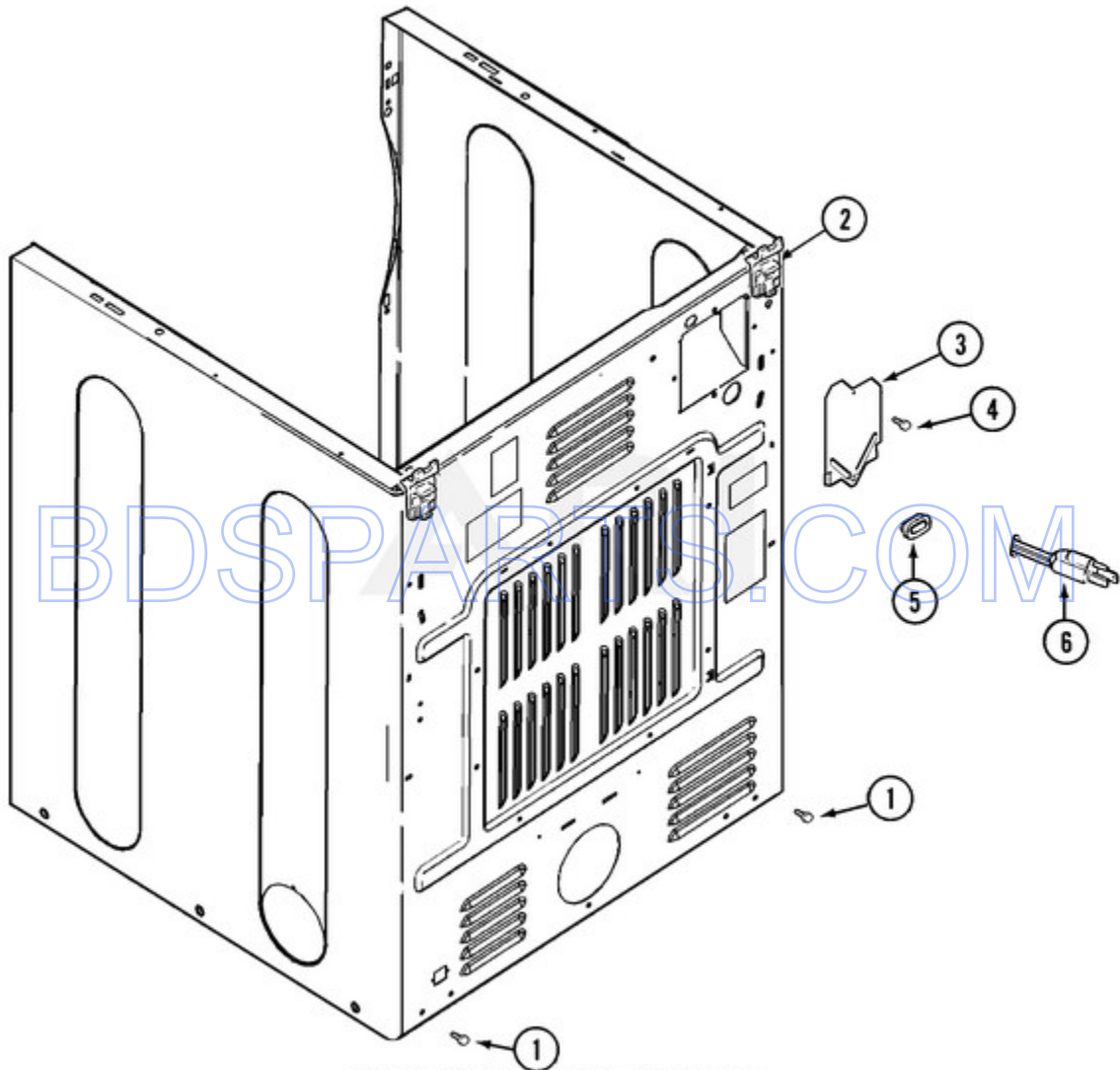
MDG21PDDWW - 04 - DOOR



Ref #	Part #	Description	Qty	Context	Note	MSRP
1	33001767	SEAL, SHROUD	1	Series	10	
2	22002247	HOOK, SECURITY	2	Series	10	
3	33001778	SHROUD (WHT)	1	Series	10	
4	22001995	SCREW, TUMBLER FRONT & SHROUD	10	Series	10	
5	33001768	SCREW, SHROUD & OUTLET DUCT	2	Series	10	
6	33001509	SWITCH, DOOR	1	Series	10	
7	33001760	BRACKET, HINGE	4	Series	10	
8	22002243	SCREW, HINGE BRACKET	2	Series	10	
8	22002244	CLIP, GROUNDING	1	Series	10	
9	Y304578	CATCH, DOOR (FEMALE)	2	Series	10	
10	33002094	SEAL, DOOR	1	Series	10	
11	213280	FASTENER, FRONT PANEL	2	Series	10	
11	22002836	PANEL, FRONT (WHT)	1	Series	10	
12	22002038	CLIP, DOOR (DOUBLE)	4	Series	10	
13	33001764	COVER, HINGE HOLE (WHT)	2	Series	10	
14	33001793	BRACKET, STRIKE	1	Series	10	
15	33001761	STRIKE, DOOR (MALE)	1	Series	10	
16	33001846	SCREW, HINGE HOLE COVER	2	Series	10	
17	33001763	PLUG, INNER DOOR	1	Series	10	
18	22002039	CLIP, DOOR (SINGLE)	2	Series	10	
18	22002063	SCREW No.8-18AB WAFER HD	2	Series	10	
18	33002544	DOOR, INNER W/SEAL (WHT)	1	Series	10	
19	22003785	DOOR, OUTER (WHT)	1	Series	10	
20	33001759	HINGE, DOOR	2	Series	10	
21	22002062	SCREW, HINGE	4	Series	10	
22	22002063	SCREW No.8-18AB WAFER HD	8	Series	10	



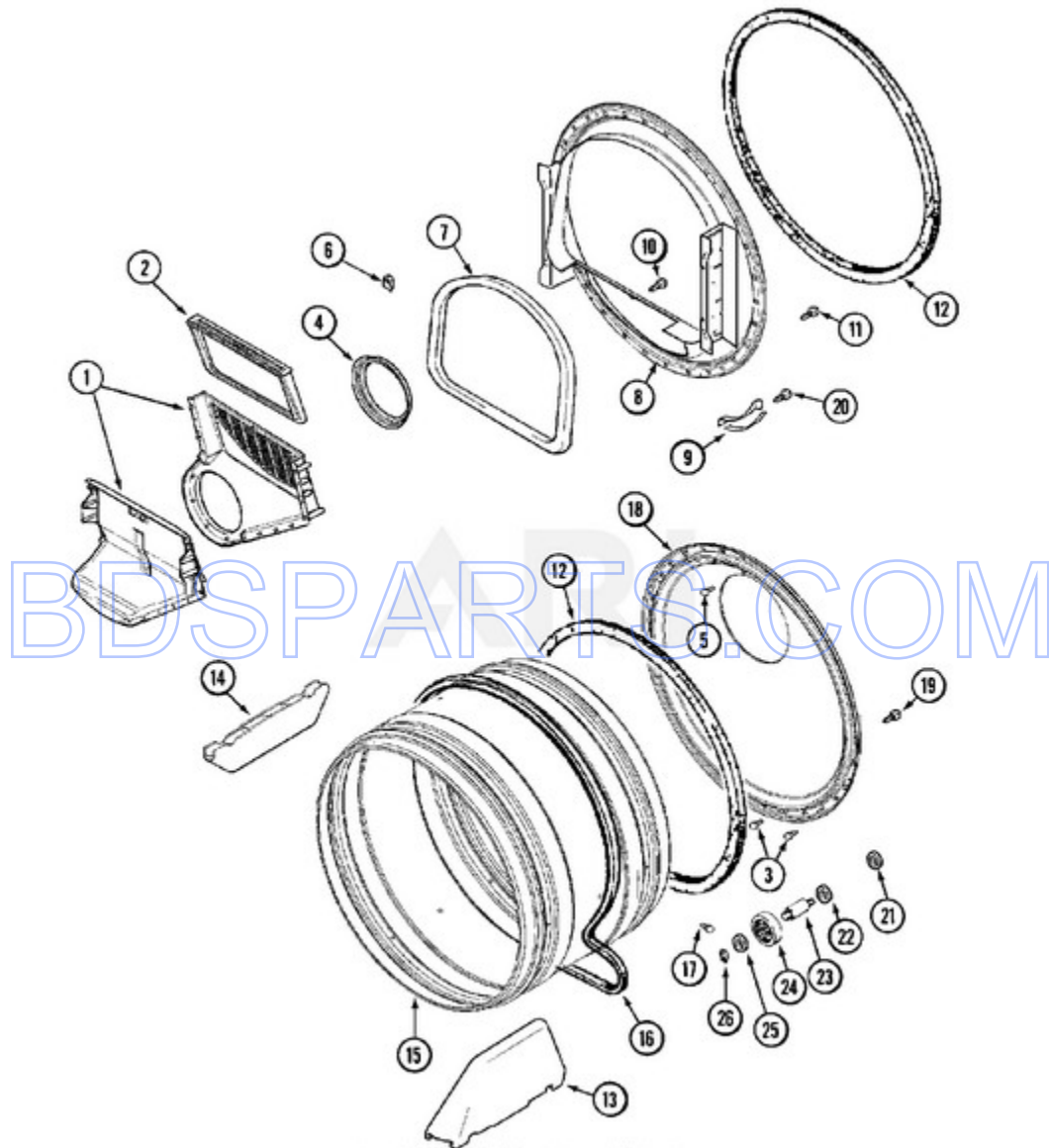
MDG21PDDWW - 05 - CABINET-REAR



<b>Ref #</b>	<b>Part #</b>	<b>Description</b>	<b>Qty</b>	<b>Context Note</b>	<b>MSRP</b>
1	22001995	SCREW, CABINET	2	Series 10	
2	22001995	SCREW, HINGE	2	Series 10	
2	22004095	HINGE, PLASTIC	2	Series 10	
3	33001795	COVER, TERMINAL BLOCK	1	Series 10	
4	22001995	SCREW, TERMINAL BLOCK COVER	1	Series 10	
5	33002053	GROMMET, CORD	1	Series 10	
5	33002157	GROMMET	1	Series 10	
6	22003062	CORD, POWER (AS WRAPPED)	1	Series 10	

BDSPARTS.COM

MDG21PDDWW - 06 - TUMBLER



Ref #	Part #	Description	Qty	Context	Note	MSRP
1	33001799	OUTLET DUCT ASSEMBLY	1	Series	10	
2	33002790	LINT FILTER	1	Series	10	
3	210932	SCREW, INLET DUCT	1	Series	10	
4	33002560	SEAL, BLOWER	1	Series	10	
5	22001996	SCREW, INLET DUCT	2	Series	10	
6	Y310376	CLIP, WIRE HARNESS	1	Series	10	
7	33001767	SEAL, SHROUD	1	Series	10	
8	33001802	FRONT, TUMBLER (W/SEAL)	1	Series	10	
9	306508	TUMBLER BEARING KIT ----W	2	Series	10	
10	NLA	SCREW, OUTLET DUCT (PHILLIPS)	1	Series	10	
11	33001855	SCREW, DUCT TO TUMBLER (HEX)	4	Series	10	
12	33001807	SEAL, TUMBLER	2	Series	10	
13	33001756	BAFFLE (TALL)	2	Series	10	
14	33001755	BAFFLE (SHORT)	1	Series	10	
15	33001794	TUMBLER	1	Series	10	
16	33002535	V-BELT (TUMBLER)	1	Series	10	
17	33001788	SCREW, BAFFLE	6	Series	10	
18	33002779	TUMBLER BACK & SEAL AS-PACK	1	Series	10	
18	33003037	TUMBLER BACK & SEAL	1	Series	17	
19	22001995	SCREW	4	Series	10	
20	210720	RIVET	4	Series	10	
21	33001443	NUT, HEX (ROLLER SHAFT)	2	Series	10	
22	Y313347	WASHER,SPRING(ROLLER SHAFT)--S	2	Series	10	
23	Y312948	SHAFT, TUMBLER ROLLER----C	2	Series	10	
24	Y303373	ROLLER (W/BEARING)	2	Series	10	
25	312535	WASHER, ROLLER SHAFT	2	Series	10	
26	410233	RING, RETAINING	2	Series	10	

MDG21PDDWW - 07 - GAS VALVE

*No Image  
Available*

Page design © 2004-2017 by ARI Network Services, Inc.

[BDSPARTS.COM](http://BDSPARTS.COM)

Ref #	Part #	Description	Qty	Context Note	MSRP
1	Y308378	CONV KIT (NATURAL TO LP) ----S	1	Series 10	
2	Y308377	CONVERSION KIT (LP TO NATURAL)	1	Series 10	
3	304971	SCREW, IGNITER	1	Series 10	
4	33002789	IGNITER ASSEMBLY	1	Series 10	
5	33002793	BURNER ASSEMBLY	1	Series 10	
6	308345	VALVE, GAS	1	Series 10	
6	33003031	CONTROL, GAS ASSEMBLY	1	Series 18	
7	306106	COIL, HOLDING & BOOSTER--W	1	Series 10	
8	306105	COIL, SECONDARY--W	1	Series 10	
9	Y313561	SCREW, GAS VALVE	2	Series 10	
10	33002710	BRACKET, GAS CONTROL	1	Series 10	
11	314082	SCREW, GAS VALVE	1	Series 10	
11	314568	SCREW, GAS VALVE	1	Series 10	
12	22001995	SCREW, GAS VALVE	1	Series 10	
13	33001842	CONNECTOR, ANGLE SERIES 18 NOT NEEDED USE VAVLE	1	Series 10	
14	33001735	PIPE & BRACKET ASSY. SERIES 18 NOT NEEDED USE VAVLE	1	Series 10	
15	211294	SCREW, DUCT	7	Series 10	
16	33002765	INLET DUCT ASSEMBLY (GAS)	1	Series 10	
16	33003039	ASSY,INLET DUCT-GAS	1	Series 17	
17	305169	THERMOSTAT, HI-LIMIT GAS	1	Series 10	
18	Y303377	SENSOR, RADIANT	1	Series 10	
19	33001835	CONE ASSY., COMBUSTION	1	Series 10	
20	Y303841	CONE, EXTENSION (COMBUSTION)	1	Series 10	
21	Y312890	RETAINER, HEATER CHAMBER	1	Series 10	
22	33001693	CAP, GAS PIPE	1	Series 10	
23	211294	SCREW, DUCT	4	Series 10	