

# DRYER

## Repair Parts List

MODEL NUMBER

MDG21PNDWW

BDSPARTS.COM

When requesting service or ordering parts, always provide the following information:

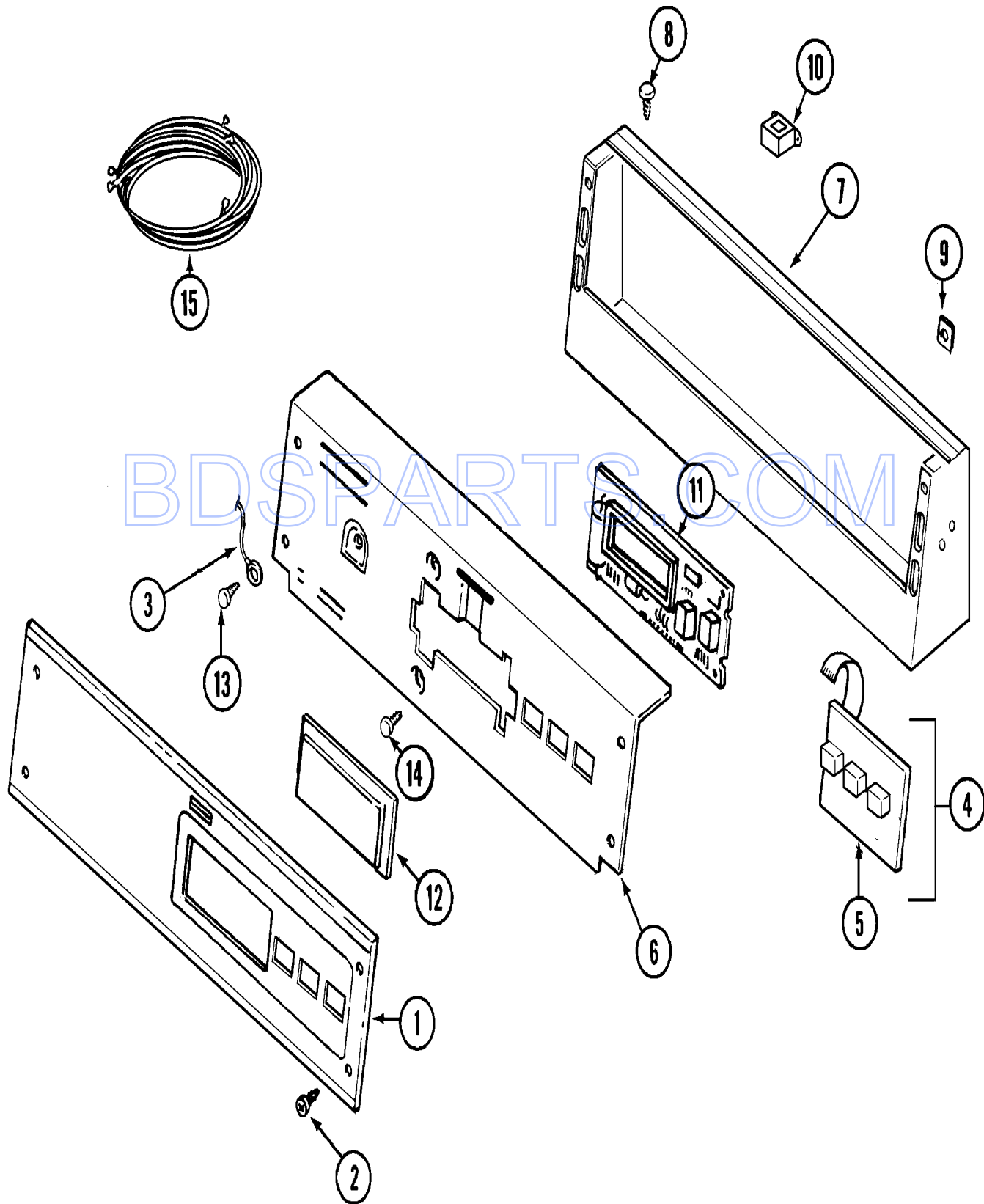
- Product Type
- Part Number
- Model Number
- Part Description

**MAYTAG**®

©2005 Maytag Services

Section: CONTROL PANEL

Model: MDG21PNDWW



CD11-35

## Section: CONTROL PANEL

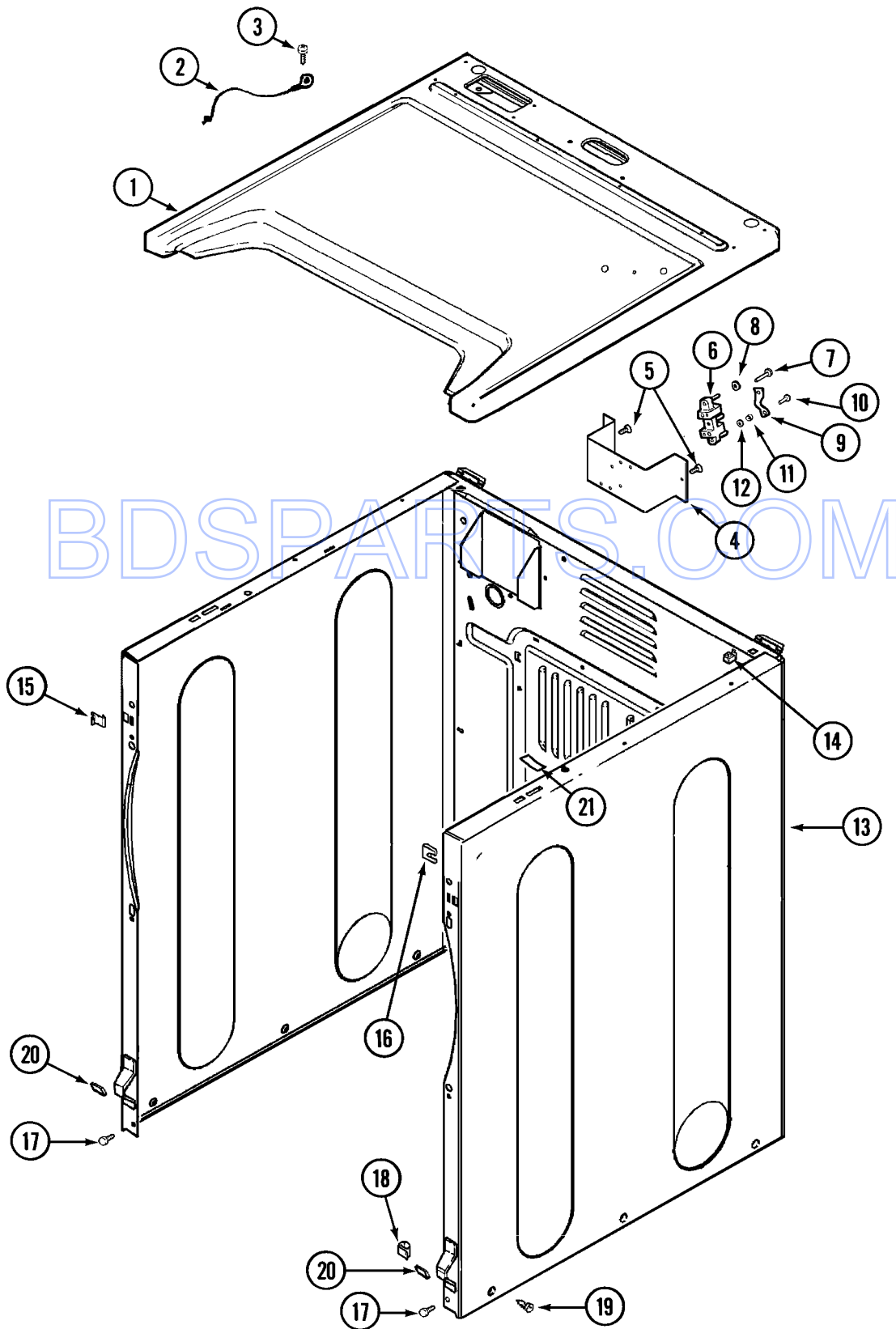
| No. | Part No. | Description                            | Series | Qty |
|-----|----------|--|--------|-----|
| 1   | 33002943 | Facia - PN (CONTROL PANEL)             | 10     | 1   |
| 2   | 215506   | SCREW, TORX Note: SCREW, CONTROL PANEL | 10     | 4   |
| 3   | 22001959 | WIRE, GROUND                           | 10     | 1   |
| 4   | 306694   | BACKUP PLATE WITH SWITCH               | 10     | 1   |
| -   | 215527   | SCREW Note: SCREW, SWITCH              | 10     | 2   |
| 5   | 33002863 | BUTTON, PUSH                           | 10     | 1   |
| 6   | 33002523 | BRACKET, BACK (WHT)                    | 10     | 1   |
| -   | 22002954 | DEFLECTOR, WATER (W/ADHESIVE)          | 10     | 1   |
| 7   | 22003101 | CONSOLE (WHT)                          | 10     | 1   |
| 8   | 22001996 | SCREW Note: SCREW, CONSOLE             | 10     | 5   |
| 9   | 215003   | FASTENER Note: CLIP, SCREW             | 10     | 2   |
| 10  | 22001960 | TRANSFORMER                            | 10     | 1   |
| -   | 22002925 | SCREW Note: SCREW, TRANSFORMER         | 10     | 2   |
| -   | 33001204 | STANDOFF, CIRCUIT BOARD                | 10     | 4   |
| 11  | 33002358 | BOARD, CONTROL                         | 10     | 1   |
| 12  | 22001962 | COVER, DISPLAY                         | 10     | 1   |
| 13  | 211252   | SCREW Note: SCREW, GROUND WIRE         | 10     | 1   |
| 14  | 215526   | SCREW Note: SCREW, CONTROL BOARD       | 10     | 1   |
| 15  | 22003818 | WIRE HARNESS                           | 10     | 1   |
| -   | 33002090 | HARNESS, SERVICE                       | 10     | 1   |

BDSPARTS.COM

\*Color Code (-)=Not Shown #=Series, Serial Prefix or Run No., N=Not Available

Section: CABINET-FRONT

Model: MDG21PNDWW



BDSPARTS.COM

**Section: CABINET-FRONT**

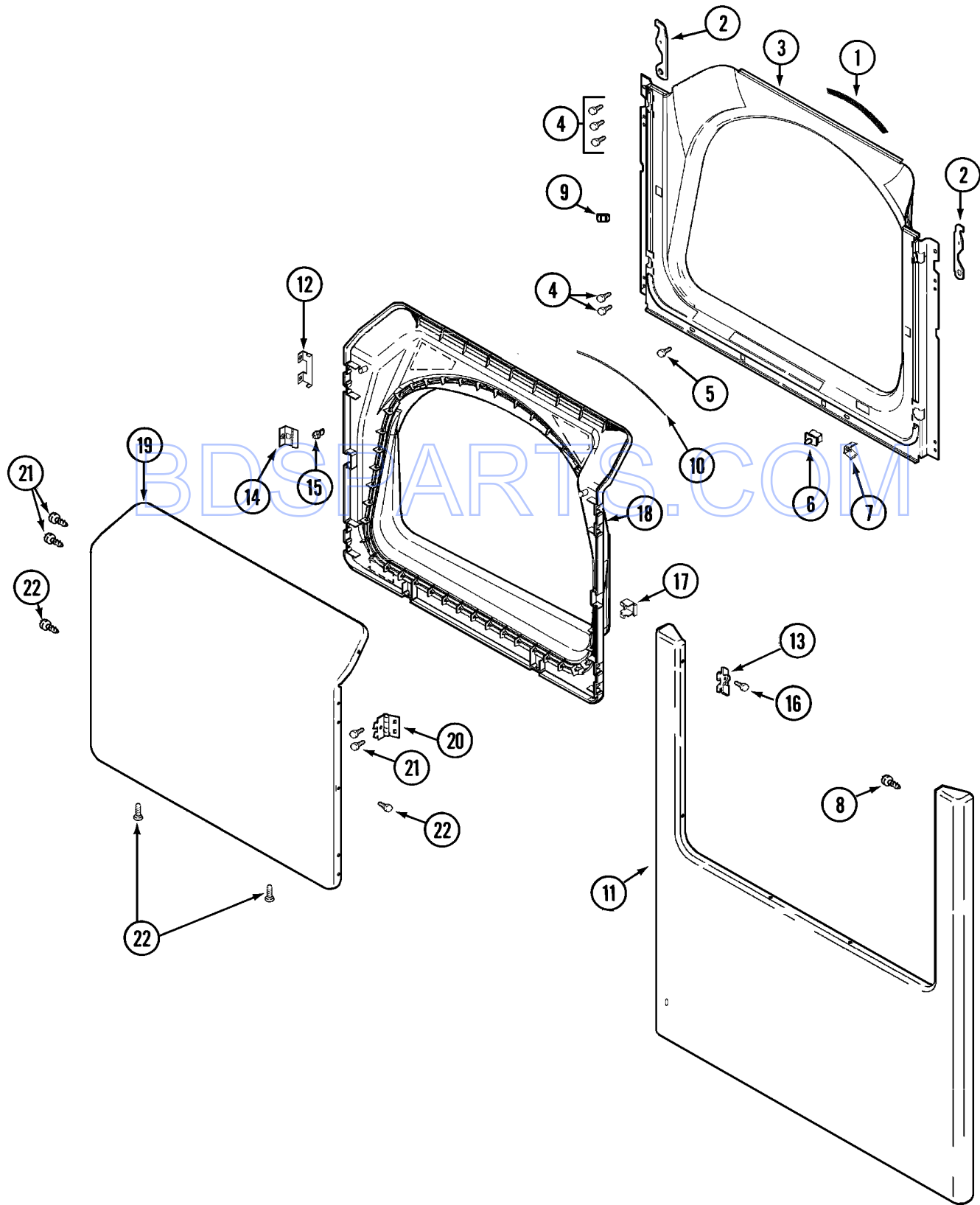
| No. | Part No. | Description   | Series | Qty |
|-----|----------|---|--------|-----|
| 1   | 33002627 | COVER, TOP (WHT-AS PK)                                  | 10     | 1   |
| 2   | 22001959 | WIRE, GROUND  | 10     | 1   |
| 3   | 210186   | SCREW, GROUND WIRE TO BASE--NA Note: SCREW, GROUND WIRE | 10     | 1   |
| 10  | Y312209  | SCREW, #10-24 X 3/4 INCH                                | 10     | 3   |
| 11  | 311484   | NUT, TERMINAL BLOCK                                     | 10     | 6   |
| 12  | 311093   | WASHER, 7/32 INCH                                       | 10     | 6   |
| 13  | 22003639 | CABINET ASSY. (WHT AS PK)                               | 10     | 1   |
| 14  | 310933   | FASTENER  | 10     | 2   |
| 15  | 22002049 | CLIP  | 10     | 2   |
| 16  | 213280   | FRONT PANEL BRACKET/FASTENER Note: RETAINER, SHROUD     | 10     | 2   |
| 17  | 22001995 | SCREW Note: SCREW, CABINET                              | 10     | 2   |
| 18  | 310376   | CLIP, WIRE HARNESS                                      | 10     | 1   |
| 19  | 22003409 | SCREW---NA Note: SCREW, CABINET (TRUSS)                 | 10     | 6   |
| 20  | 22002239 | CLIP, LOWER FRONT PANEL                                 | 10     | 2   |
| 21  | 33001836 | STRAP, TOP COVER SUPPORT                                | 10     | 1   |

BDSPARTS.COM

\*Color Code (-)=Not Shown #=Series, Serial Prefix or Run No., N=Not Available

Section: DOOR

Model: MDG21PNDWW



CD12-21

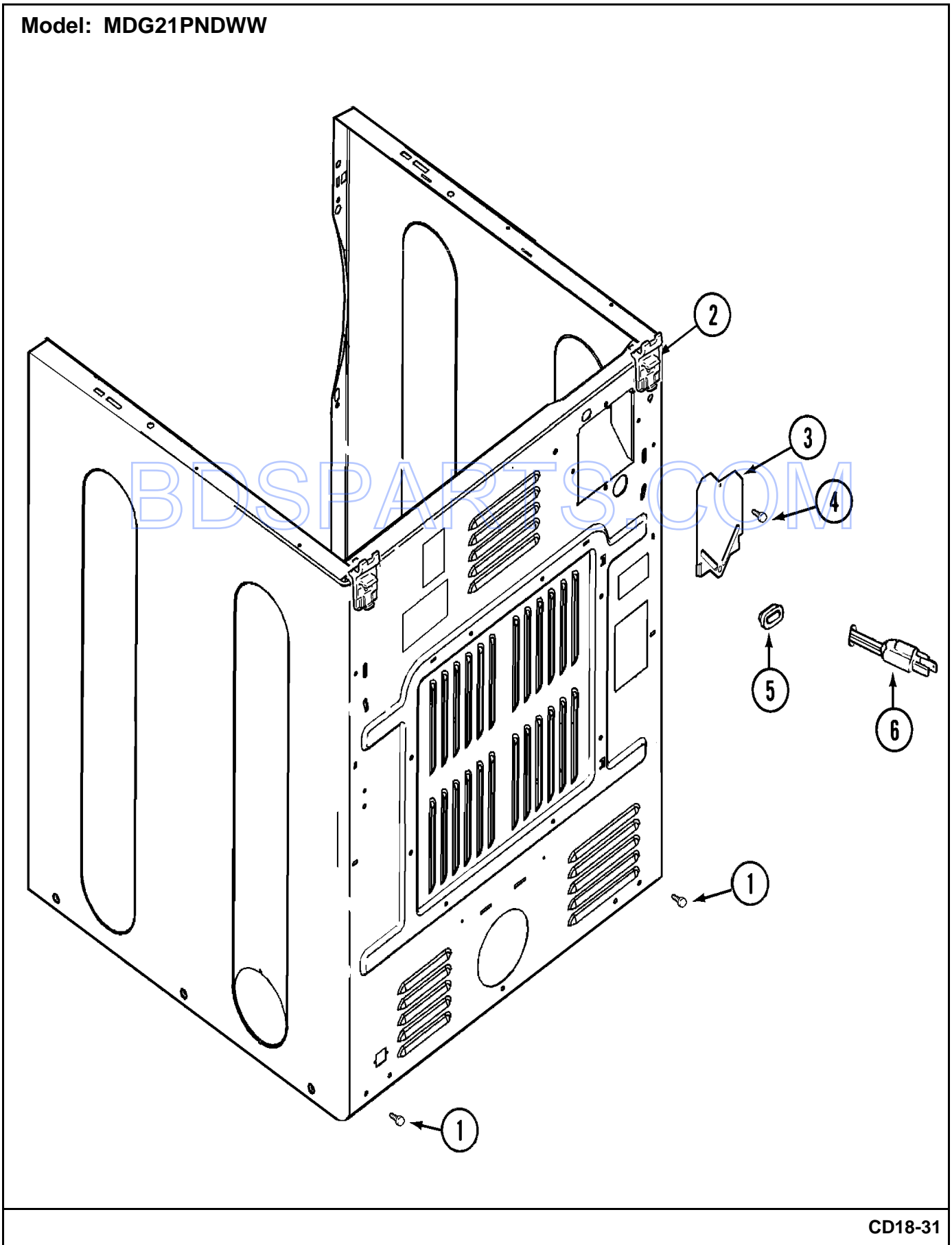
## Section: DOOR

| No. | Part No. | Description  | Series | Qty |
|-----|----------|--|--------|-----|
| 1   | 33001767 | SEAL, SHROUD   | 10     | 1   |
| 2   | 22002247 | HOOK, SECURITY   | 10     | 2   |
| 3   | 33001778 | SHROUD (WHT)   | 10     | 1   |
| 4   | 22001995 | SCREW Note: SCREW, TUMBLER FRONT & SHROUD                | 10     | 10  |
| 5   | 33001768 | SCREW, SHROUD Note: SCREW, SHROUD & OUTLET DUCT          | 10     | 2   |
| 6   | 33001509 | SWITCH, DOOR   | 10     | 1   |
| 7   | 33001760 | BRACKET, HINGE   | 10     | 4   |
| -   | 22002244 | CLIP, GROUNDING  | 10     | 1   |
| 8   | 22002243 | SCREW Note: SCREW, HINGE BRACKET                         | 10     | 2   |
| 9   | Y304578  | CATCH, DOOR (FEMALE)                                     | 10     | 2   |
| 10  | 33002094 | SEAL, DOOR   | 10     | 1   |
| -   | 213280   | FRONT PANEL BRACKET/FASTENER Note: FASTENER, FRONT PANEL | 10     | 2   |
| 11  | 22002836 | PANEL, FRONT (WHT)                                       | 10     | 1   |
| 12  | 22002038 | CLIP, DOOR (DOUBLE)                                      | 10     | 4   |
| 13  | 33001764 | COVER, HINGE HOLE (WHT)                                  | 10     | 2   |
| 14  | 33001793 | BRACKET, STRIKE  | 10     | 1   |
| 15  | 33001761 | STRIKE, DOOR (MALE)                                      | 10     | 1   |
| 16  | 33001846 | SCREW Note: SCREW, HINGE HOLE COVER                      | 10     | 2   |
| 17  | 33001763 | PLUG, INNER DOOR   | 10     | 1   |
| -   | 22002063 | SCREW #8-18AB WAFER HD                                   | 10     | 2   |
| 18  | 33002544 | DOOR, INNER W/SEAL (WHT)                                 | 10     | 1   |
| -   | 22002039 | CLIP, DOOR (SINGLE)                                      | 10     | 2   |
| 19  | 22003785 | DOOR, OUTER (WHT) Note: DOOR, OUTER (WHT)                | 10     | 1   |
| 20  | 33001759 | HINGE, DOOR  | 10     | 2   |
| 21  | 22002062 | SCREW Note: SCREW, HINGE                                 | 10     | 4   |
| 22  | 22002063 | SCREW #8-18AB WAFER HD                                   | 10     | 8   |

\*Color Code (-)=Not Shown #=Series, Serial Prefix or Run No., N=Not Available

Section: CABINET-REAR

Model: MDG21PNDWW



CD18-31



**Section: CABINET-REAR**

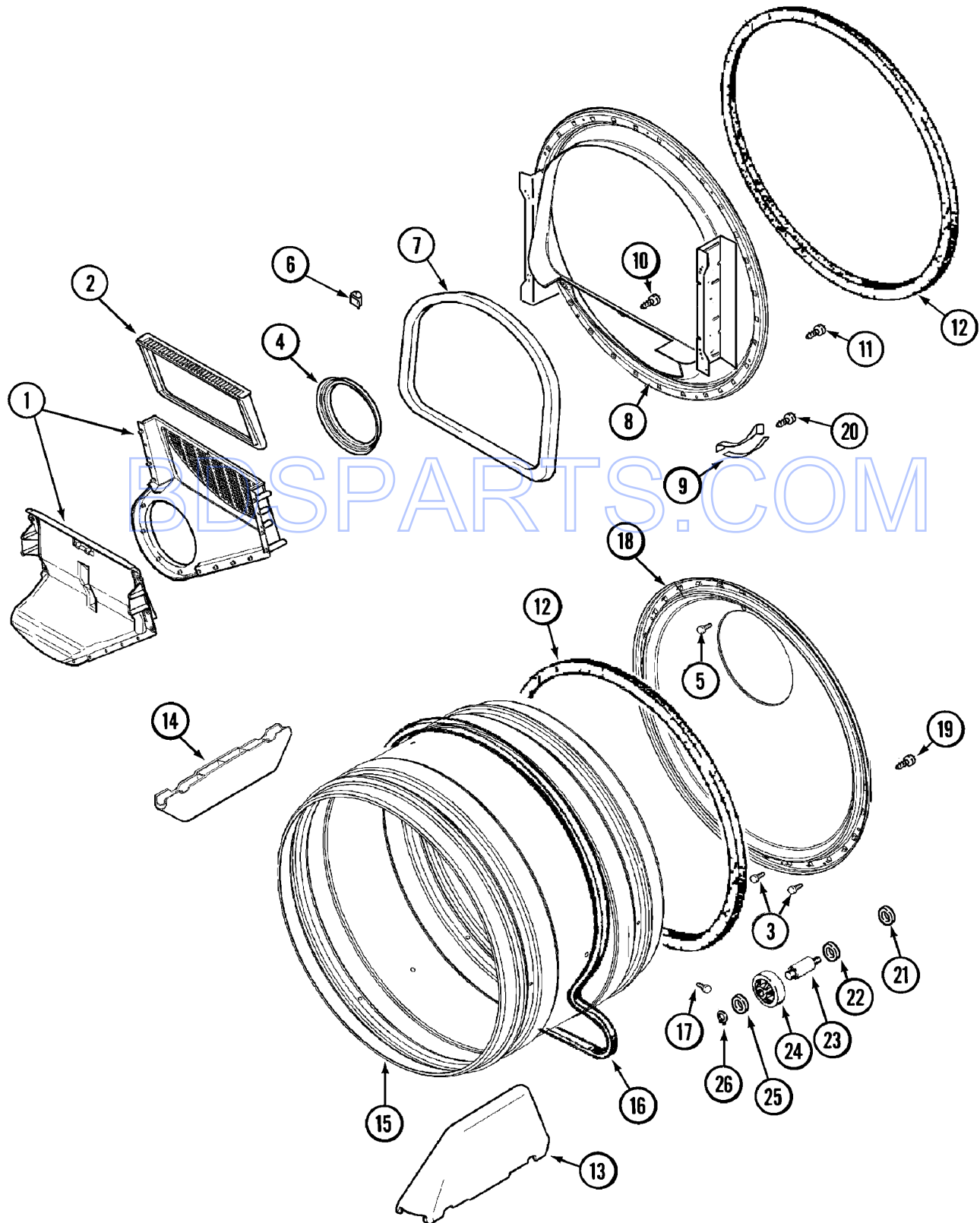
| No. | Part No. | Description                             | Series | Qty |
|-----|----------|---|--------|-----|
| 1   | 22001995 | SCREW Note: SCREW, CABINET              | 10     | 2   |
| -   | 22001995 | SCREW Note: SCREW, HINGE                | 10     | 2   |
| 2   | 22004095 | HINGE, PLASTIC                          | 10     | 2   |
| 3   | 33001795 | COVER, TERMINAL BLOCK                   | 10     | 1   |
| 4   | 22001995 | SCREW Note: SCREW, TERMINAL BLOCK COVER | 10     | 1   |
| 5   | 211881   | GROMMET, CORD                           | 10     | 1   |
| 5   | 33002157 | GROMMET                                 | 10     | 1   |
| 6   | 22003062 | CORD, POWER (AS WRAPPED)                | 10     | 1   |

BDSPARTS.COM

\*Color Code (-)=Not Shown #=Series, Serial Prefix or Run No., N=Not Available

Section: TUMBLER

Model: MDG21PNDWW



CD16-29

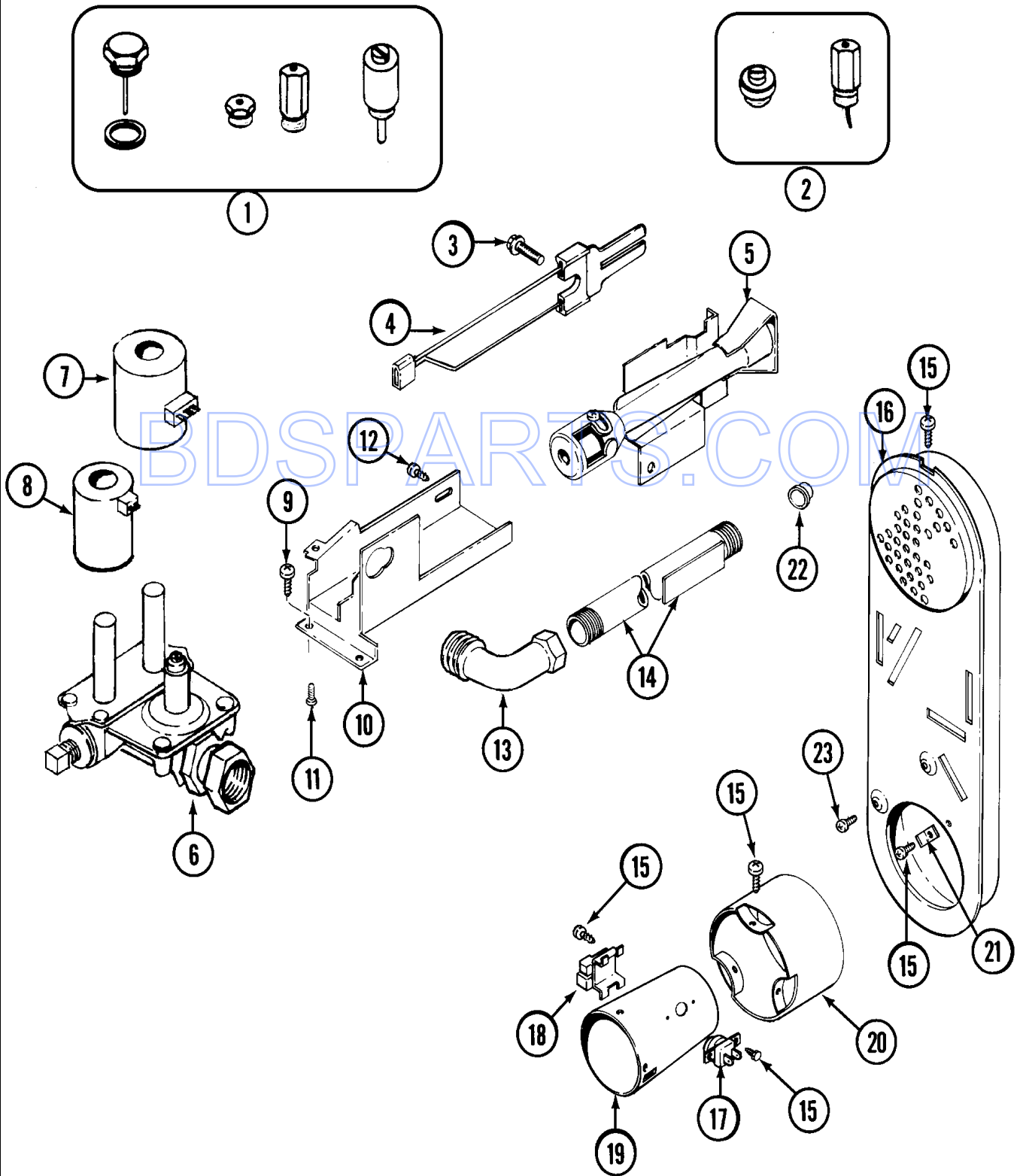
## Section: TUMBLER

| No. | Part No. | Description   | Series | Qty |
|-----|----------|---|--------|-----|
| 1   | 33001799 | OUTLET DUCT ASSEMBLY                                | 10     | 1   |
| 2   | 33002790 | LINT FILTER   | 10     | 1   |
| 3   | 210932   | SCREW, #8 X 9/16 CTSK Note: SCREW, INLET DUCT       | 10     | 1   |
| 4   | 33002560 | SEAL, BLOWER  | 10     | 1   |
| 5   | 22001996 | SCREW Note: SCREW, INLET DUCT                       | 10     | 2   |
| 6   | 310376   | CLIP, WIRE HARNESS                                  | 10     | 1   |
| 7   | 33001767 | SEAL, SHROUD  | 10     | 1   |
| 8   | 33001802 | FRONT, TUMBLER (W/SEAL)                             | 10     | 1   |
| 9   | 306508   | TUMBLER BEARING KIT                                 | 10     | 2   |
| 10  | N 312311 | SCREW----NA Note: SCREW, OUTLET DUCT (PHILLIPS)     | 10     | 1   |
| 11  | 33001855 | SCREW (HEX HEAD) Note: SCREW, DUCT TO TUMBLER (HEX) | 10     | 4   |
| 12  | 33001807 | SEAL, TUMBLER                                       | 10     | 2   |
| 13  | 33001756 | BAFFLE (TALL)                                       | 10     | 2   |
| 14  | 33001755 | BAFFLE (SHORT)                                      | 10     | 1   |
| 15  | 33001794 | TUMBLER   | 10     | 1   |
| 16  | 33002535 | V-BELT (TUMBLER)                                    | 10     | 1   |
| 17  | 33001788 | SCREW, BAFFLE                                       | 10     | 6   |
| 18  | 33003037 | TUMBLER BACK & SEAL                                 | 17     | 1   |
| 18  | 33002779 | TUMBLER BACK & SEAL AS-PACK                         | 10     | 1   |
| 19  | 22001995 | SCREW   | 10     | 4   |
| 20  | 210720   | RIVET   | 10     | 4   |
| 21  | 33001443 | NUT, HEX (ROLLER SHAFT)                             | 10     | 2   |
| 22  | Y313347  | WASHER, SPRING (ROLLER SHAFT)                       | 10     | 2   |
| 23  | 312948   | SHAFT, TUMBLER ROLLER                               | 10     | 2   |
| 24  | Y303373  | BEARING & ROLLER ASSEMBLY Note: ROLLER (W/BEARING)  | 10     | 2   |
| 25  | 312535   | WASHER, ROLLER SHAFT                                | 10     | 2   |
| 26  | 410233   | RING, RETAINING                                     | 10     | 2   |

\*Color Code (-)=Not Shown #=Series, Serial Prefix or Run No., N=Not Available

Section: GAS VALVE

Model: MDG21PNDWW



CD14-5

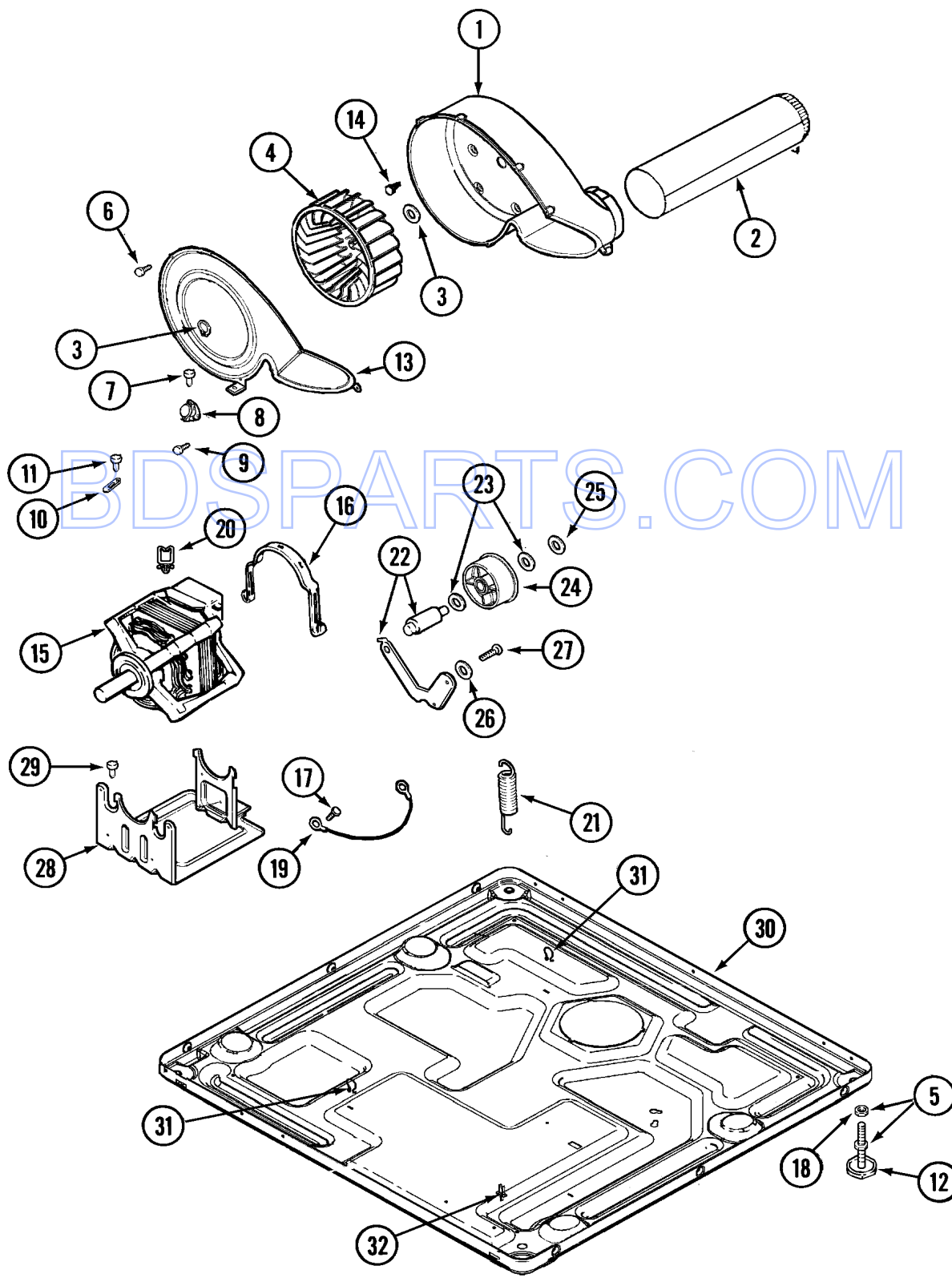
## Section: GAS VALVE

| No. | Part No. | Description   | Series | Qty |
|-----|----------|---|--------|-----|
| 1   | 308378   | CONVERSION KIT (NATURAL TO LP)                            | 10     | 1   |
| 2   | Y308377  | CONVERSION KIT (LP TO NATURAL)                            | 10     | 1   |
| 3   | 304971   | SCREW Note: SCREW, IGNITER                                | 10     | 1   |
| 4   | 33002789 | IGNITER ASSEMBLY  | 10     | 1   |
| 5   | 33002793 | BURNER ASSEMBLY   | 10     | 1   |
| 6   | 33003031 | CONTROL, GAS ASSEMBLY                                     | 18     | 1   |
| 6   | 308345   | VALVE, GAS  | 10     | 1   |
| 6   | 308345   | VALVE, GAS  | 19     | 1   |
| 7   | 306106   | COIL, HOLDING & BOOSTER                                   | 10     | 1   |
| 8   | 306105   | COIL, SECONDARY   | 10     | 1   |
| 9   | N 313561 | SCREW----NA Note: SCREW, GAS VALVE                        | 10     | 2   |
| 10  | 33002710 | BRACKET, GAS CONTROL                                      | 10     | 1   |
| 11  | 314568   | SCREW-GAS VALVE TO BRACKET Note: SCREW, GAS VALVE         | 10     | 1   |
| 11  | 314082   | SCREW Note: SCREW, GAS VALVE                              | 10     | 1   |
| 12  | 22001995 | SCREW Note: SCREW, GAS VALVE                              | 10     | 1   |
| 13  | 33001842 | CONNECTOR, ANGLE Note: SERIES 18 NOT NEEDED USE VAVLE     | 10     | 1   |
| 14  | 33001735 | PIPE & BRACKET ASSY. Note: SERIES 18 NOT NEEDED USE VAVLE | 10     | 1   |
| 15  | 211294   | SCREW Note: SCREW, DUCT                                   | 10     | 7   |
| 16  | 33002765 | INLET DUCT ASSEMBLY (GAS)                                 | 10     | 1   |
| 16  | 33003039 | ASSY,INLET DUCT-GAS                                       | 17     | 1   |
| 17  | 303395   | THERMOSTAT, HI-LIMIT (GAS)                                | 10     | 1   |
| 18  | 303377   | SENSOR, RADIANT   | 10     | 1   |
| 19  | 33001835 | CONE ASSY., COMBUSTION                                    | 10     | 1   |
| 20  | N 304953 | EXTENSION F/COMBUSTION CONE                               | 10     | 1   |
| 21  | Y312890  | RETAINER, HEATER CHAMBER                                  | 10     | 1   |
| 22  | 33001693 | CAP, GAS PIPE   | 10     | 1   |
| 23  | 211294   | SCREW Note: SCREW, DUCT                                   | 10     | 4   |

\*Color Code (-)=Not Shown #=Series, Serial Prefix or Run No., N=Not Available

Section: MOTOR DRIVE & BASE

Model: MDG21PNDWW



CD17-33

## Section: MOTOR DRIVE & BASE

| No. | Part No.   | Description                                    | Series | Qty |
|-----|------------|--|--------|-----|
| 1   | 33001789   | HOUSING, BLOWER                                | 10     | 1   |
| -   | 22001995   | SCREW Note: SCREW, EXHAUST DUCT ASSEMBLY       | 10     | 1   |
| 2   | 33001800   | DUCT ASSY., EXHAUST                            | 10     | 1   |
| 3   | 410233     | RING, RETAINING                                | 10     | 2   |
| 4   | 33002797   | WHEEL, BLOWER                                  | 10     | 1   |
| 5   | 305086     | ADJUSTABLE LEG & NUT                           | 10     | 4   |
| 6   | 33001855   | SCREW (HEX HEAD) Note: SCREW, HOUSING COVER    | 10     | 8   |
| 7   | N 313561   | SCREW----NA Note: SCREW, HOUSING COVER         | 10     | 3   |
| 8   | 303392     | CYCLING THERMOSTAT 140 DEG.                    | 10     | 1   |
| 8   | Y303391    | CYCLING THERMOSTAT 155 DEG.                    | 10     | 1   |
| 9   | 22001996   | SCREW Note: SCREW, THERMOSTAT                  | 10     | 4   |
| 10  | 33001762   | FUSE, THERMAL (W' BRACKET)                     | 10     | 1   |
| 11  | 314848     | SCREW Note: SCREW, THERMAL CUT-OFF             | 10     | 1   |
| 12  | 314137     | FOOT, RUBBER                                   | 10     | 4   |
| 13  | 33002711   | COVER, BLOWER HOUSING                          | 10     | 1   |
| 14  | 314818     | SCREW Note: SCREW, BLOWER HOUSING              | 10     | 4   |
| 15  | 33002795   | MOTOR, DRIVE 60HZ                              | 10     | 1   |
| 16  | 33002221   | CLIP, MOTOR                                    | 10     | 2   |
| 17  | 910343     | SCREW, GROUND WIRE                             | 10     | 1   |
| 18  | Y052740    | NUT Note: NUT, LEG                             | 10     | 4   |
| 19  | 901220     | WIRE, GROUND                                   | 10     | 1   |
| 20  | 310376     | CLIP, WIRE HARNESS                             | 10     | 1   |
| 21  | 33002460   | SPRING, IDLER Note: SPRING & PLUG KIT 33002459 | 10     | 1   |
| -   | 33002461   | PLUG FOR SPRING                                | 10     | 1   |
| 22  | 33001840   | IDLER ARM & SHAFT ASSY.                        | 10     | 1   |
| 23  | 312527     | WASHER, IDLER SHAFT (QTY-1)                    | 10     | 2   |
| 24  | 33001783   | BEARING, IDLER ASSEMBLY                        | 10     | 1   |
| 25  | 312958     | RETAINING RING, IDLER SHAFT                    | 10     | 1   |
| 26  | 33002218   | GROMMET, IDLER ARM                             | 10     | 1   |
| 27  | Y014874    | SCREW Note: SCREW, IDLER ARM SLEEVE            | 10     | 1   |
| 28  | 33002817   | MOTOR SUPPORT, OFFSET                          | 10     | 1   |
| 29  | N 313561   | SCREW----NA Note: SCREW, MOTOR & BLOWER        | 10     | 2   |
| 30  | N 33002465 | BASE, (LWR)----NA                              | 10     | 1   |
| 31  | 410490     | SPRING, WIRE HARNESS                           | 10     | 2   |
| 32  | 315471     | RETAINER, WIRE                                 | 10     | 1   |

\*Color Code (-)=Not Shown #=Series, Serial Prefix or Run No., N=Not Available





