

# DRYER

## Repair Parts List

MODEL NUMBER

MDG26MNAAW

BDSPARTS.COM

When requesting service or ordering parts, always provide the following information:

- Product Type
- Part Number
- Model Number
- Part Description

**MAYTAG**®

©2005 Maytag Services

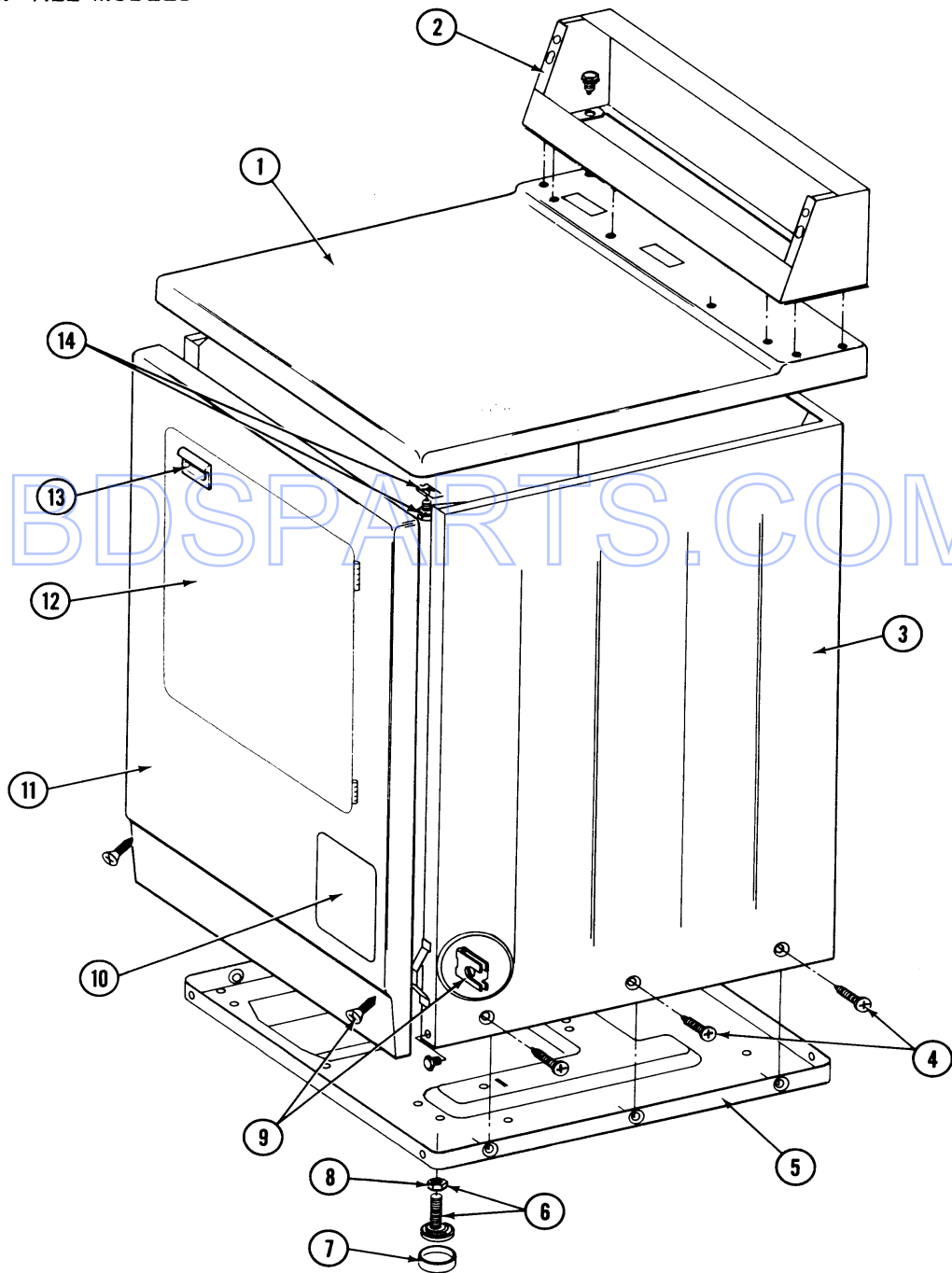
Section: FRONT VIEW

Model: MDG26MNAAW

Section: FRONT

P/N 16000340

Models: ALL MODELS



5/92

2

MA103A5

**Section: FRONT VIEW**

No.	Part No.	Description	Series	Qty
1	307104	TOP COVER ASSY Note: TOP COVER ASSY. (WHT)	A0	1
2	N 305212	CONSOLE-WHITE Note: CONSOLE (WHT)	A0	1
-	212276	SCREW	A0	4
3	N 307124	CABINET (WHT)	A0	1
-	Y310632	SCREW	A0	1
4	213007	SCREW, CABINET	A0	6
5	Y303361	BASE ASSY.	A0	1
6	Y305086	ADJUSTABLE LEG & NUT	A0	4
7	Y314137	FOOT, RUBBER	A0	4
8	Y052740	NUT	A0	4
9	204439	SCREW & FSTNER ASSY(FRT.PANEL)	A0	4
10	N 302542	ACCESS DOOR-WHITE Note: ACCESS DOOR (WHT)	A0	1
11	N 308000	PANEL, FRONT (WHT) Note: FRONT PANEL ASSY. (WHT)	A0	1
12	308061	DOOR ASSY. COMPLETE (WHT)	A0	1
13	314946	HANDLE WHITE Note: HANDLE (WHT)	A0	1
14	204445	SCREW & FASTENER ASY.	A0	2

BDSPARTS.COM

\*Color Code (-)=Not Shown #=Series, Serial Prefix or Run No., N=Not Available

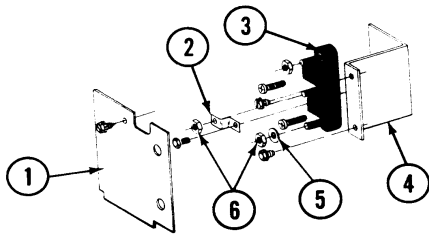
Section: REAR VIEW

Model: MDG26MNAAW

Section: REAR

P/N 16000340

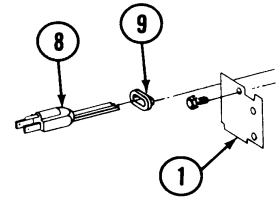
Models: ALL MODELS



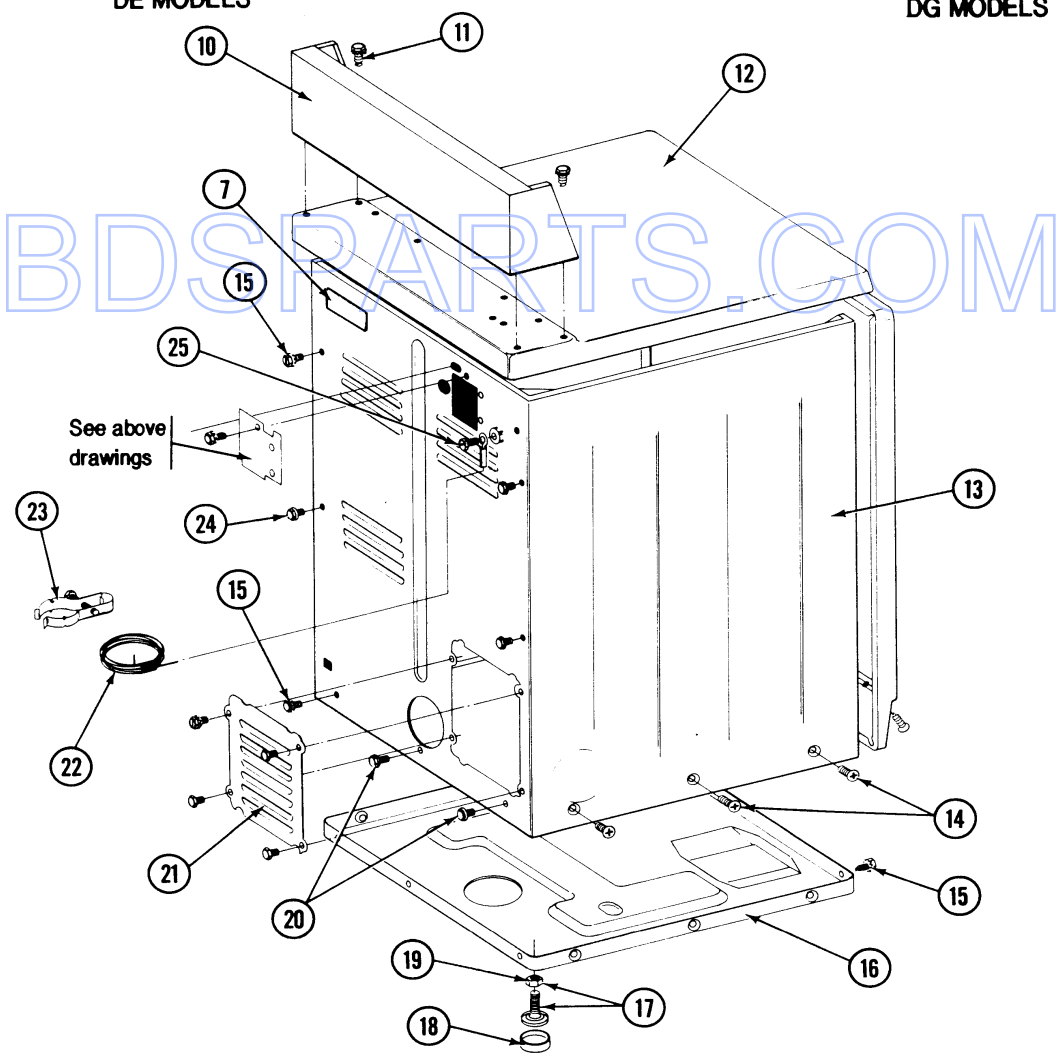
DE MODELS

CET APPAREIL DOIT ETRE CORRECTEMENT BRANCHE  
A UN FIL DE TERRE POUR EVITER TOUT DANGER  
POSSIBLE DUE A UN CHOC ELECTRIQUE  
THIS APPLIANCE MUST BE GROUNDED ACCORDING  
TO THE REQUIREMENTS OF NATIONAL AND LOCAL  
CODES IN ORDER TO AVOID THE POSSIBILITY OF  
HAZARD DUE TO ELECTRICAL SHOCK

7



DG MODELS



5/92

## Section: REAR VIEW

No.	Part No.	Description	Series	Qty
1	Y312905	COVER, TERMINAL	A0	1
1	N 313561	SCREW----NA	A0	1
2	Y312184	STRAP, GROUND	A0	1
2	Y311423	SCREW, #10-32 X 1/2 INCH	A0	2
3	Y312209	SCREW, #10-24 X 3/4 INCH----O	A0	2
3	400008	BLOCK, TERMINAL	A0	1
7	214519	LABEL, ELECTRICAL INSTRUCTION Note: LABEL, ELECTRICAL INSTR.	A0	1
8	305168	CORD, POWER (CANADA)	A0	1
8	302521	POWER CORD	A0	1
9	211881	GROMMET, CORD	A0	1
10	N 305212	CONSOLE-WHITE Note: CONSOLE (WHT)	A0	1
11	212276	SCREW	A0	4
12	307105	TOP COVER ASSY. (WHT) Note: TOP COVER ASSY. (WHT)	A0	1
13	N 307124	CABINET (WHT)	A0	1
14	213007	SCREW, CABINET	A0	6
15	N 313561	SCREW----NA	A0	1
16	Y303361	BASE ASSY.	A0	1
17	Y305086	ADJUSTABLE LEG & NUT	A0	4
18	Y314137	FOOT, RUBBER	A0	4
19	Y052740	NUT	A0	4
20	Y310632	SCREW	A0	3
21	211294	SCREW	A0	3
21	Y312951	COVER, ACCESS	A0	1
21	Y313559	SCREW	A0	1
22	311155	GROUND WIRE	A0	1
23	N 312122	SCREW	A0	1
23	301548	CLAMP, GROUND (W/SCREW)	A0	1
24	Y310632	SCREW	A0	3
25	303846	SCREW & WASHER ASSY.	A0	1

\*Color Code (-)=Not Shown #=Series, Serial Prefix or Run No., N=Not Available

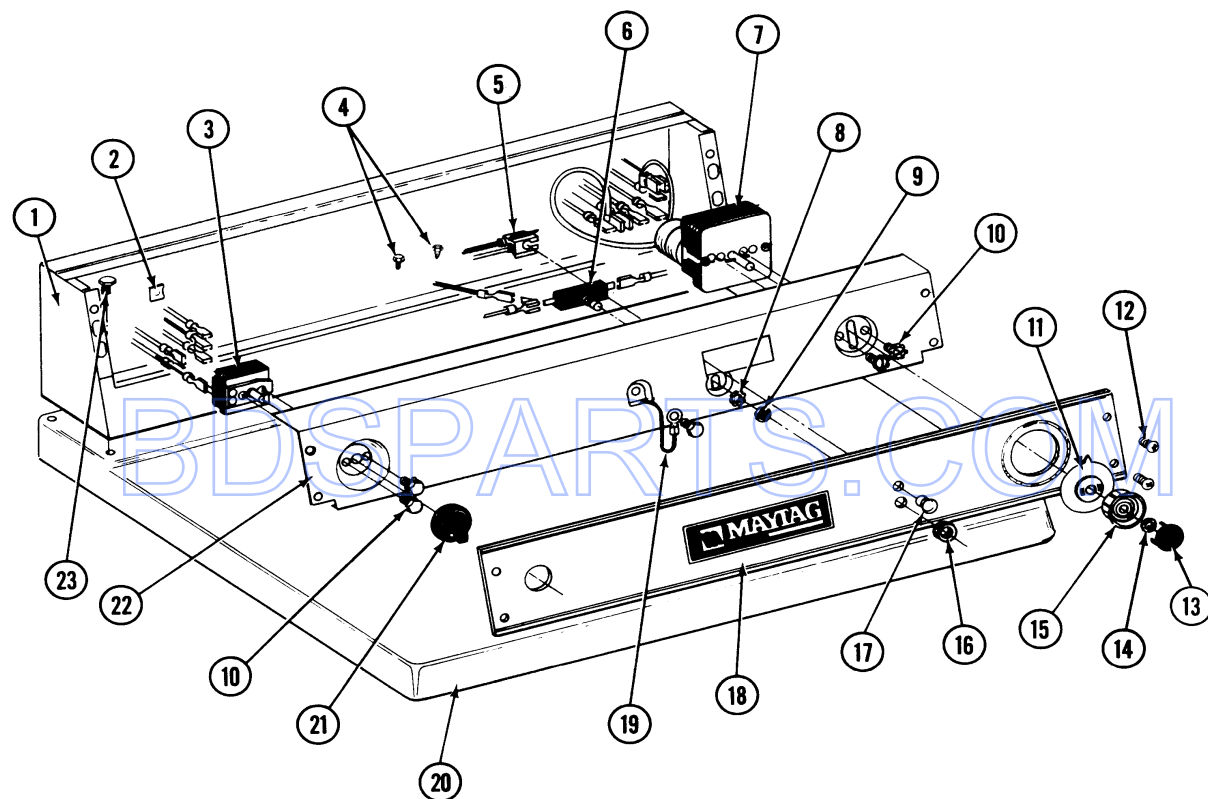
Section: CONTROL PANEL (MN)

Model: MDG26MNAAW

Section: MN CONTROL PANEL

P/N 16000340

Models: MDE-MDG26MN



5/92

10

MA103A13

## Section: CONTROL PANEL (MN)

No.	Part No.	Description	Series	Qty
1	N 305212	CONSOLE-WHITE Note: CONSOLE (WHT)	A0	1
2	215003	FASTENER	A0	2
3	307237	SWITCH, CYCLE SELECTOR	A0	1
4	Y314322	SCREW, #8-32 X 3/8 INCH	A0	1
4	211294	SCREW	A0	1
5	204075	LIGHT, INDICATOR	A0	1
6	306940	SWITCH, PUSH-TO-START	A0	1
7	305214	TIMER	A0	1
-	Y304585	TIMER MOTOR RPR	A0	1
8	312751	LOCK WASHER	A0	1
9	Y312706	HEX NUT ON SWITCH	A0	1
10	Y313588	SCREW	A0	4
11	314725	TIMER DIAL INDICATOR	A0	1
12	212277	SCREW, #8 X 1/2 INCH	A0	4
13	314723	CAP FOR TIMER KNOB	A0	1
14	312273	NUT	A0	1
15	314724	KNOB FOR TIMER	A0	1
16	Y312702	KNURLED NUT	A0	1
17	215564	LENS, INDICATOR (AMBER)	A0	1
18	314909	CONTROL PANEL COMMERCIAL DRYER	A0	1
19	205810	WIRE, GROUND	A0	1
19	211252	SCREW	A0	1
20	307104	TOP COVER ASSY Note: TOP COVER ASSY. (WHT)	A0	1
21	306938	KNOB, SELECTOR SWITCH	A0	1
22	N 314911	BACK-UP PLATE - WHITE Note: BACK-UP PLATE (WHT)	A0	1
23	212276	SCREW	A0	4
24	308510	HARNESS, WIRE	A5	1
24	N 308365	WIRE HARNESS	A2	1
24	N 307406	WIRE HARNESS	A0	1

\*Color Code (-)=Not Shown #=Series, Serial Prefix or Run No., N=Not Available

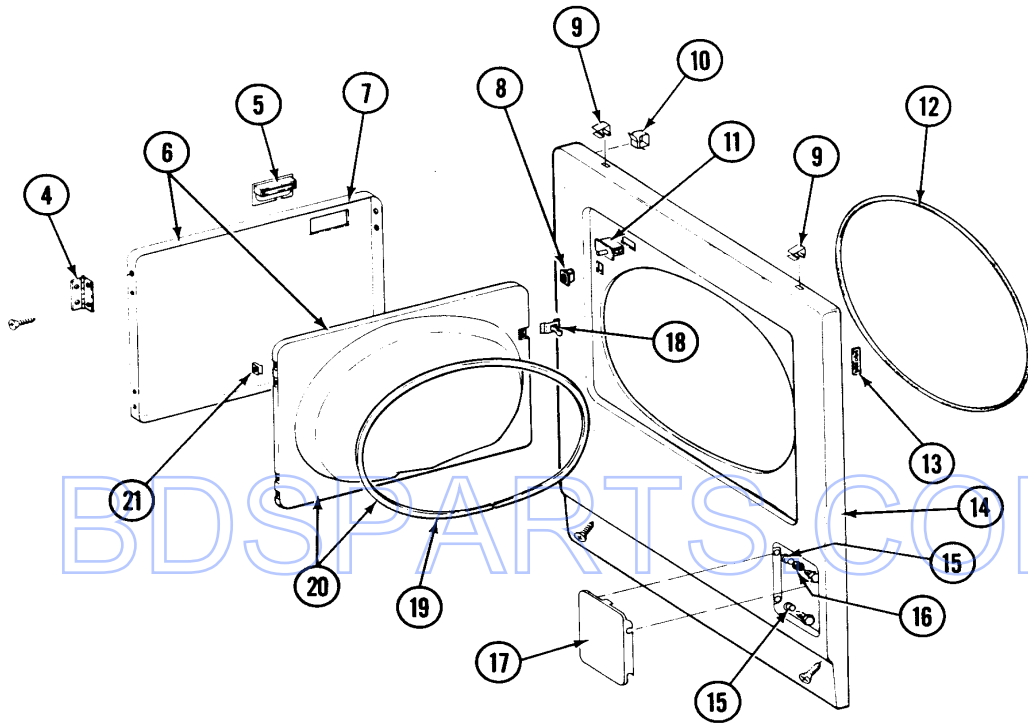
Section: FRONT PANEL

Model: MDG26MNAAW

Section: FRONT PANEL

P/N 16000340

Models: ALL MODELS



**YOU WILL NOT GET GOOD RESULTS UNLESS YOU CLEAN THE LINT SCREEN FIRST.**

1

**WARNING - TO AVOID FIRE HAZARD, INCLUDING SPONTANEOUS COMBUSTION DO NOT DRY ARTICLES CONTAINING FOAM RUBBER OR SIMILARLY TEXTURED RUBBER-LIKE MATERIALS OR ANY MATERIAL ON WHICH YOU HAVE USED A CLEANING SOLVENT OR WHICH CONTAINS FLAMMABLE LIQUID OR SOLIDS (SUCH AS GASOLINE, KEROSENE, WAXES, ETC.).**

**CAUTION - DRY ONLY FABRICS CLEANED IN WATER. BE SURE TO CLEAN LINT FILTER BEFORE EACH LOAD. A CLOTHES DRYER PRODUCES COMBUSTIBLE LINT AND THE AREA AROUND THE CLOTHES DRYER SHOULD BE KEPT FREE OF LINT. THIS DRYER MUST BE INSTALLED WITH AN EXHAUST VENT TO THE OUTDOORS.**

**ATTENTION - NE SÈCHER QUE DES TISSUS LAVÉS DANS L'EAU POUR ÉVITER TOUTE POSSIBILITÉ DE FEU OU D'INCENDIE PAR COMBUSTION SPONTANÉE. NE PAS SÈCHER DANS LA SÈCHEUSE DES ARTICLES CONTENANT DU CAOUTCHOUC - MOUSSE OU FORMES DE CAOUTCHOUC - MOUSSE UNE SÈCHEUSE À L'INTÉRIEUR DE LA MOUSSE COMBUSTIBLE ET IL EST RECOMMANDÉ DE GARDER LA ZONE DE LA SÈCHEUSE PROPRE ET EXEMPTÉ DE MOUSSE. ASSUREZ-VOUS DE NETTOYER LE FILTRE AVANT CHAQUE USAGE. L'INSTALLATION DE CETTE SÈCHEUSE DOIT COMPORTER UN ÉVÉNEMENT VERS L'EXTÉRIEUR.**

2

**WARNING - TO AVOID FIRE HAZARD, INCLUDING SPONTANEOUS COMBUSTION DO NOT DRY ARTICLES CONTAINING FOAM RUBBER OR SIMILARLY TEXTURED RUBBER-LIKE MATERIALS OR ANY MATERIAL ON WHICH YOU HAVE USED A CLEANING SOLVENT OR WHICH CONTAINS FLAMMABLE LIQUIDS OR SOLIDS (SUCH AS GASOLINE, KEROSENE, WAXES, ETC.).**

**CAUTION - DRY ONLY FABRICS CLEANED IN WATER. BE SURE TO CLEAN LINT FILTER BEFORE EACH LOAD. A CLOTHES DRYER PRODUCES COMBUSTIBLE LINT AND THE AREA AROUND THE CLOTHES DRYER SHOULD BE KEPT FREE OF LINT. THIS DRYER SHOULD BE EXHAUSTED TO THE OUTSIDE.**

**GAS DRYERS ONLY - EQUIPPED WITH AN INTERMITTENT TYPE IGNITION DEVICE.**

3



## Section: FRONT PANEL

No.	Part No.	Description	Series	Qty
1	Y313340	LABEL, LINT SCREEN INSTRUCTION Note: LABEL, LINT SCREEN INSTR.	A0	1
2	314941	LABEL, INSTRUCTION	A0	1
3	N 314942	INSTRUCTION LABEL Note: PART NOT USED	A0	1
4	307099	HINGE	A0	2
4	Y314062	SCREW	A0	8
5	314946	HANDLE WHITE Note: HANDLE (WHT)	A0	1
-	312960	SCREW - INLET DUCT Note: SCREW, INLET DUCT	A0	1
6	Y307111	DOOR ASSY. COMPLETE (WHT) Note: DOOR ASSY. COMPLETE (WHT)	A0	1
7	314966	PANEL, OUTER (WHT) Note: PANEL, OUTER (WHT)	A0	1
8	306436	DOOR LATCH KIT--W	A0	1
9	212982	FASTENER, PANEL	A0	2
10	Y310376	CLIP, WIRE HARNESS	A0	1
11	Y305753	SWITCH, DOOR	A0	1
12	314937	SEAL, FRONT PANEL	A0	1
13	Y313907	TWIN FASTENER	A0	2
-	204439	SCREW & FSTNER ASSY(FRT.PANEL) Note: SCREW & FSTNER ASSY (FT.PNL)	A0	1
14	N 307998	FRONT PANEL Note: FRONT PANEL ASSY. (WHT)	A0	1
15	212949	SCREW	A0	4
15	N 312301	BUSHING FOR ACCESS STUD Note: BUSHING, ACCESS STUD	A0	1
16	312369	SLEEVE-ACCESS PANEL STUD Note: SLEEVE, ACCESS PANEL STUD	A0	2
17	N 302542	ACCESS DOOR-WHITE Note: ACCESS DOOR (WHT)	A0	1
18	314936	DOOR STRIKE	A0	1
-	314944	STRIKE PLATE	A0	1
19	314935	DOOR SEAL	A0	1
20	307098	DOOR, INNER (W/SEAL)	A0	1
21	Y313910	CLIP, DOOR LINER TO OUTER PNL Note: CLIP, DOOR LINER (OUTER PNL)	A0	9

\*Color Code (-)=Not Shown #=Series, Serial Prefix or Run No., N=Not Available

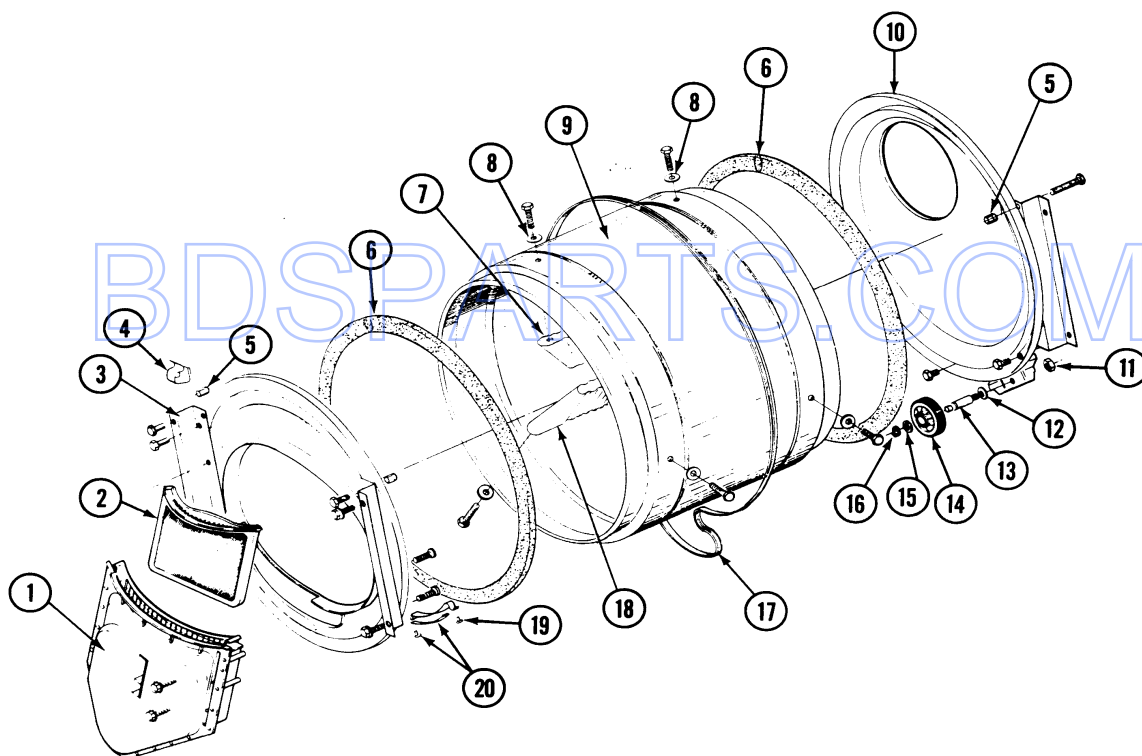
Section: TUMBLER

Model: MDG26MNAAW

P/N 16000340

Section: TUMBLER

Models: ALL MODELS



5/92

26

MA103C1

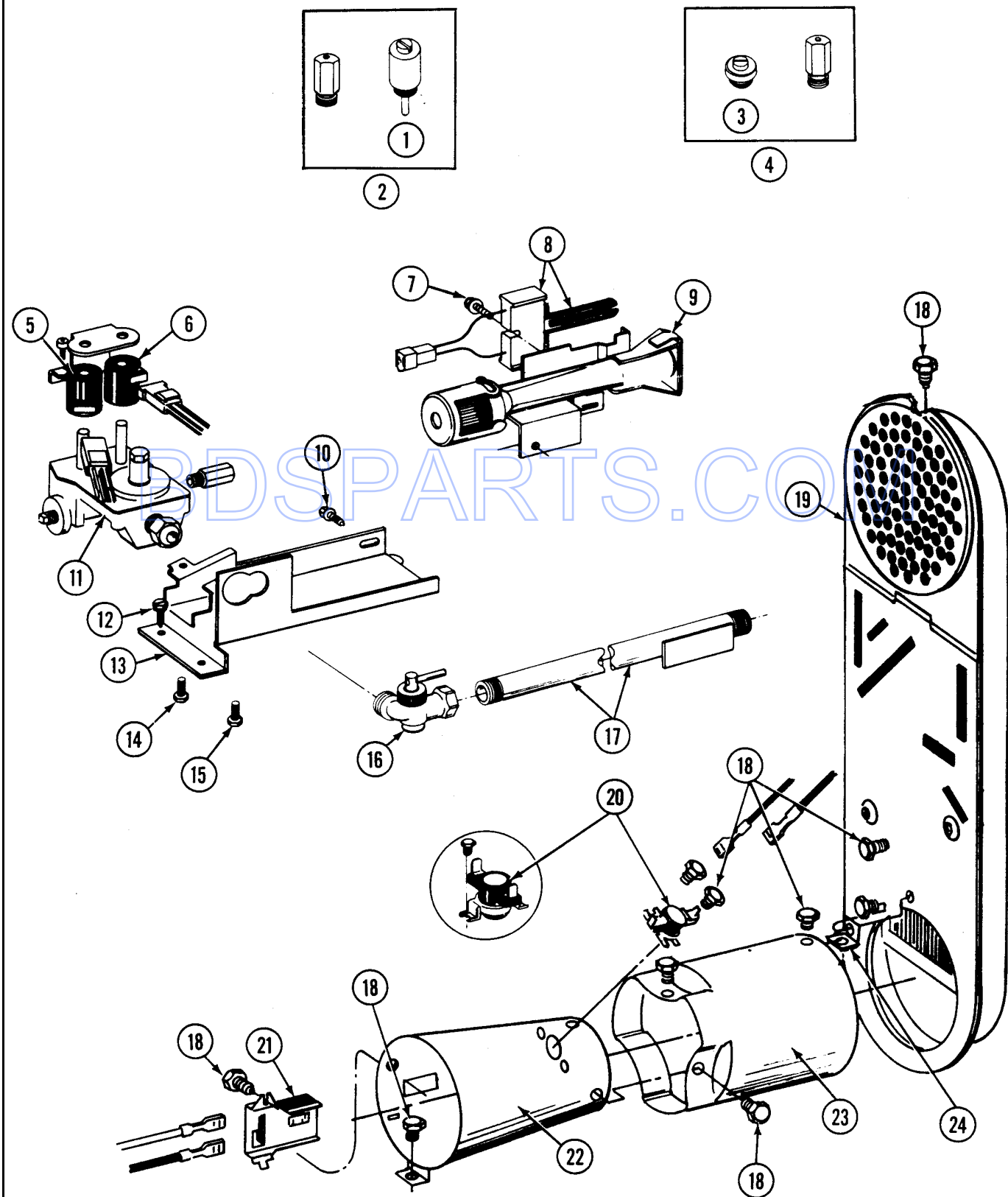
## Section: TUMBLER

No.	Part No.	Description	Series	Qty
1	Y307112	DUCT, OUTLET ASSY.	A0	1
-	Y314110	SCREW, INLET DUCT ----S	A0	4
2	307108	SCREEN, LINT	A0	1
-	Y310632	SCREW	A0	3
- N	313764	SCREW	A0	4
3	307109	FRONT, TUMBLER (W/SEAL)	A0	1
- N	313561	SCREW----NA	A0	1
4	Y310376	CLIP, WIRE HARNESS	A0	1
5 N	313915	COVER, THREAD	A0	4
6	314820	SEAL, TUMBLER	A0	2
-	Y310759	SCREW	A0	6
7	314803	BAFFLE (SHORT)	A0	1
8	314158	WASHER	A0	6
9	306663	TUMBLER W/BAFFLES	A0	1
9	314802	TUMBLER W/OUT BAFFLES	A0	1
-	211294	SCREW	A0	3
10	Y307114	BACK, TUMBLER (W/SEAL) ---S	A0	1
10	Y308544	BACK, TUMBLER (W/SEAL) ---S	A5	1
11	312538	NUT, ROLLER SHAFT	A0	2
12	Y313347	WASHER,SPRING(ROLLER SHAFT)--S	A0	2
13	Y312948	SHAFT, TUMBLER ROLLER---C	A0	2
14	Y303373	BEARING & ROLLER ASSEMBLY	A0	2
15	312535	WASHER, ROLLER SHAFT	A0	2
16	410233	RING, RETAINING	A0	4
17	Y312959	BELT, TUMBLER & MOTOR	A0	1
-	Y310759	SCREW	A0	6
18	314804	BAFFLE (TALL)	A0	2
19	210720	RIVET	A0	4
20	306508	TUMBLER BEARING KIT	A0	2

\*Color Code (-)=Not Shown #=Series, Serial Prefix or Run No., N=Not Available

Section: GAS VALVE

Model: MDG26MNAAW



MA103C7

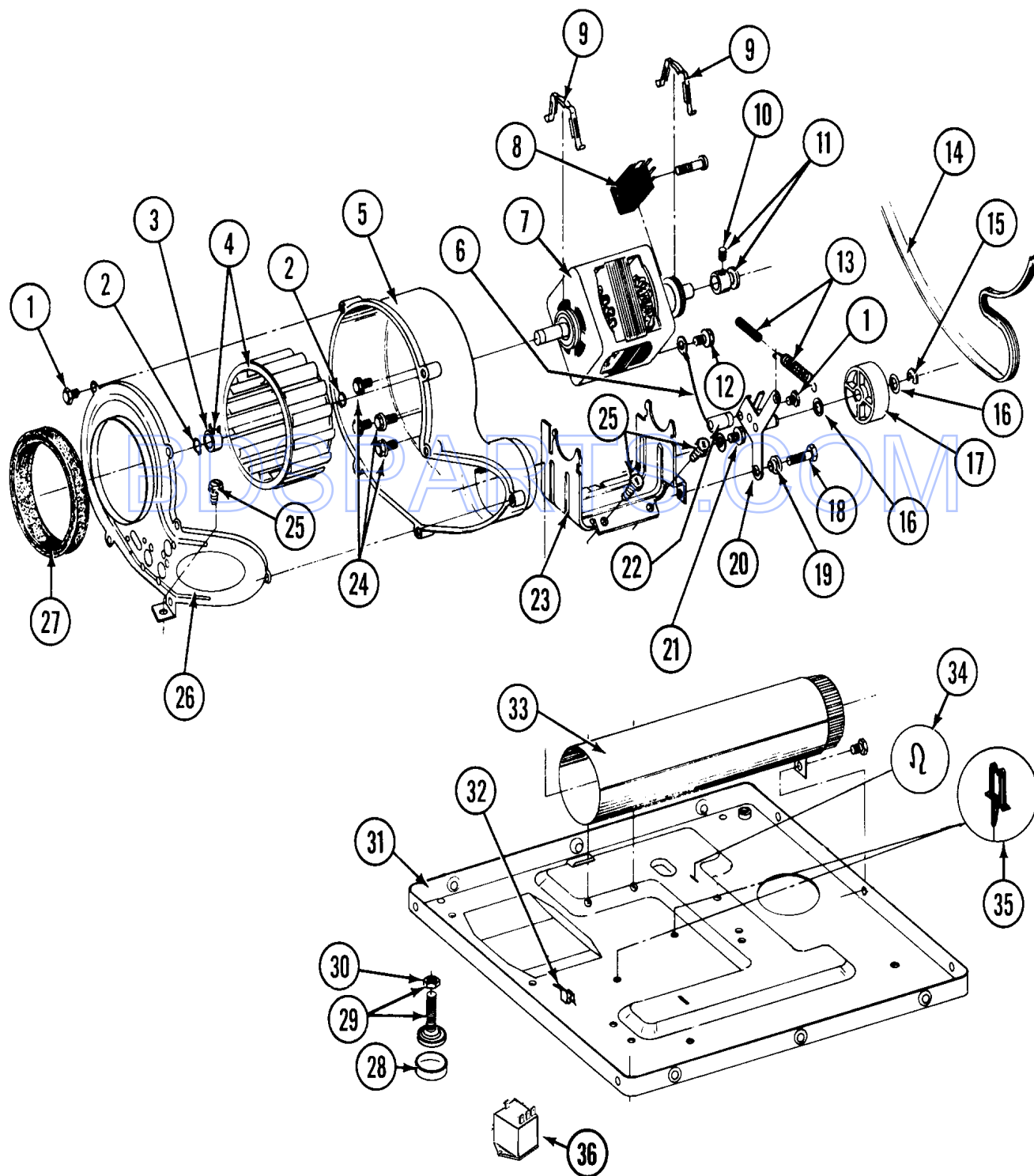
## Section: GAS VALVE

No.	Part No.	Description	Series	Qty
1	306184	PLUG, BLOCKING (LPG REGULATOR) Note: PLUG, BLOCKING (LP REGULATOR)	A0	1
2	Y308378	CONV KIT (NATURAL TO LP) ----S Note: CONVERSION KIT (NAT TO LP)	A2	1
3	314602	LEAK LIMITER (LPG)	A0	1
4	Y308377	CONVERSION KIT (LP TO NATURAL) Note: CONVERSION KIT (LP TO NAT)	A2	1
5	306106	COIL, HOLDING & BOOSTER--W	A0	1
6	306105	COIL, SECONDARY--W	A0	1
7	304971	SCREW	A0	1
8	304970	IGNITER ASSY, GAS VALVE	A0	1
9	304974	BURNER ASSEMBLY	A2	1
10	Y310632	SCREW	A2	1
11	308345	VALVE, GAS	A2	1
12 N	313561	SCREW----NA	A0	1
13	314566	BRACKET, GAS VALVE	A2	1
14	314082	SCREW	A2	1
15	Y313559	SCREW	A0	1
16	Y303349	SHUT-OFF, GAS VALVE	A0	1
17	Y303383	PIPE & BRACKET ASSY.	A0	1
18	211294	SCREW	A0	11
19	Y308504	INLET DUCT ASSY.	A5	1
19	307119	INLET DUCT ASSY.	A0	1
20	305169	THERMOSTAT, HI-LIMIT GAS	A0	1
21	Y303377	SENSOR, RADIANT	A0	1
22	Y303368	CONE, COMBUSTION	A0	1
22	Y308548	CONE, COMBUSTION	A5	1
23	Y303841	CONE, EXTENSION (COMBUSTION)	A0	1
24	Y312890	RETAINER, HEATER CHAMBER	A0	1

\*Color Code (-)=Not Shown #=Series, Serial Prefix or Run No., N=Not Available

Section: MOTOR DRIVE, BLOWER & BASE FRAME

Model: MDG26MNAAW



LD14-20

## Section: MOTOR DRIVE, BLOWER & BASE FRAME

No.	Part No.	Description	Series	Qty
1	Y312961	SCREW	A0	6
2	410233	RING, RETAINING	A0	2
3	312967	CLAMP, BLOWER HOUSING	A0	1
4	Y303836	BLOWER WHEEL ASSEMBLY & CLAMP	A0	1
5	Y312893	HOUSING, BLOWER	A0	1
6	901220	WIRE, GROUND	A0	1
7	Y303358	MOTOR ---C	A0	1
8	Y303877	SWITCH, MOTOR----C Note: PRODUCTION #3-3358-2, 3-3358-4& 3-3358-7	A0	1
8 N	306207	SWITCH, MOTOR START-PROD. Note: #3-3358-8 & 3-3358-9	A0	1
8	Y303879	SWITCH, MOTOR STARTPROD. Note: SWITCH, MOTOR START-PROD. #3-3358 & 3-3358-6	A0	1
9	Y015825	CLIP, MOTOR	A0	2
10	Y053241	SET SCREW, PULLEY	A0	1
11	Y305185	PULLEY, MOTOR (W/SET SCREW)	A0	1
12	910343	SCREW, GROUND WIRE	A0	1
13	Y303945	IDLER SPRING ASSEMBLY	A0	1
14	Y312959	BELT, TUMBLER & MOTOR	A0	1
15	312958	RETAINING RING, IDLER SHAFT	A0	2
16	Y312527	WASHER, IDLER SHAFT (QTY-1)	A0	2
17	Y303705	PULLEY, IDLER	A0	1
18	Y014874	SCREW	A0	1
19	Y312894	SLEEVE, IDLER ARM ----S	A0	1
20	Y303363	IDLER ARM & SHAFT ASSY.	A0	1
21	211294	SCREW	A0	1
22	Y313582	SPACER, IDLER BRACKET	A0	1
23 N	312897	SUPPORT, MOTOR	A0	1
24	Y310632	SCREW	A0	5
25 N	313561	SCREW----NA	A0	3
26	314778	COVER FOR BLOWER Note: COVER, BLOWER	A0	1
27	Y312901	SEAL, BLOWER	A0	1
28	210684	FOOT, RUBBER	A0	4
29	Y302699	LEG, ADJUSTABLE (W/NUT)---S	A0	4
30	210385	NUT, LOCK	A0	4
31	Y303361	BASE ASSY.	A0	1
32	Y310376	CLIP, WIRE HARNESS	A0	1
33	Y303442	EXHAUST DUCT ASSY.	A0	1
34	410490	SPRING, WIRE HARNESS	A0	1
35	Y313262	RETAINER, WIRE HARNESS	A0	3

\*Color Code (-)=Not Shown #=Series, Serial Prefix or Run No., N=Not Available

**Section: THERMOSTATS**

**Model: MDG26MNAAW**

**No image available**

BDSPARTS.COM

**NOIMAGE**



## Section: THERMOSTATS

No.	Part No.	Description	Series	Qty
1	303392	CYCLING THERMOSTAT 140 DEG Note: CYCLING THERMOSTAT (140 DEG.)	A0	1
-	211294	SCREW	A0	2
3	306604	CUT-OFF, THERMAL	A0	1
-	314848	SCREW	A0	2
4	306966	THERMOSTAT, MULTI-TEMP	A0	1
-	211294	SCREW	A0	2

BDSPARTS.COM

\*Color Code (-)=Not Shown #=Series, Serial Prefix or Run No., N=Not Available

