

DRYER

Repair Parts List

MODEL NUMBER
MDG32PC3AW

When requesting service or ordering parts, always provide the following information:

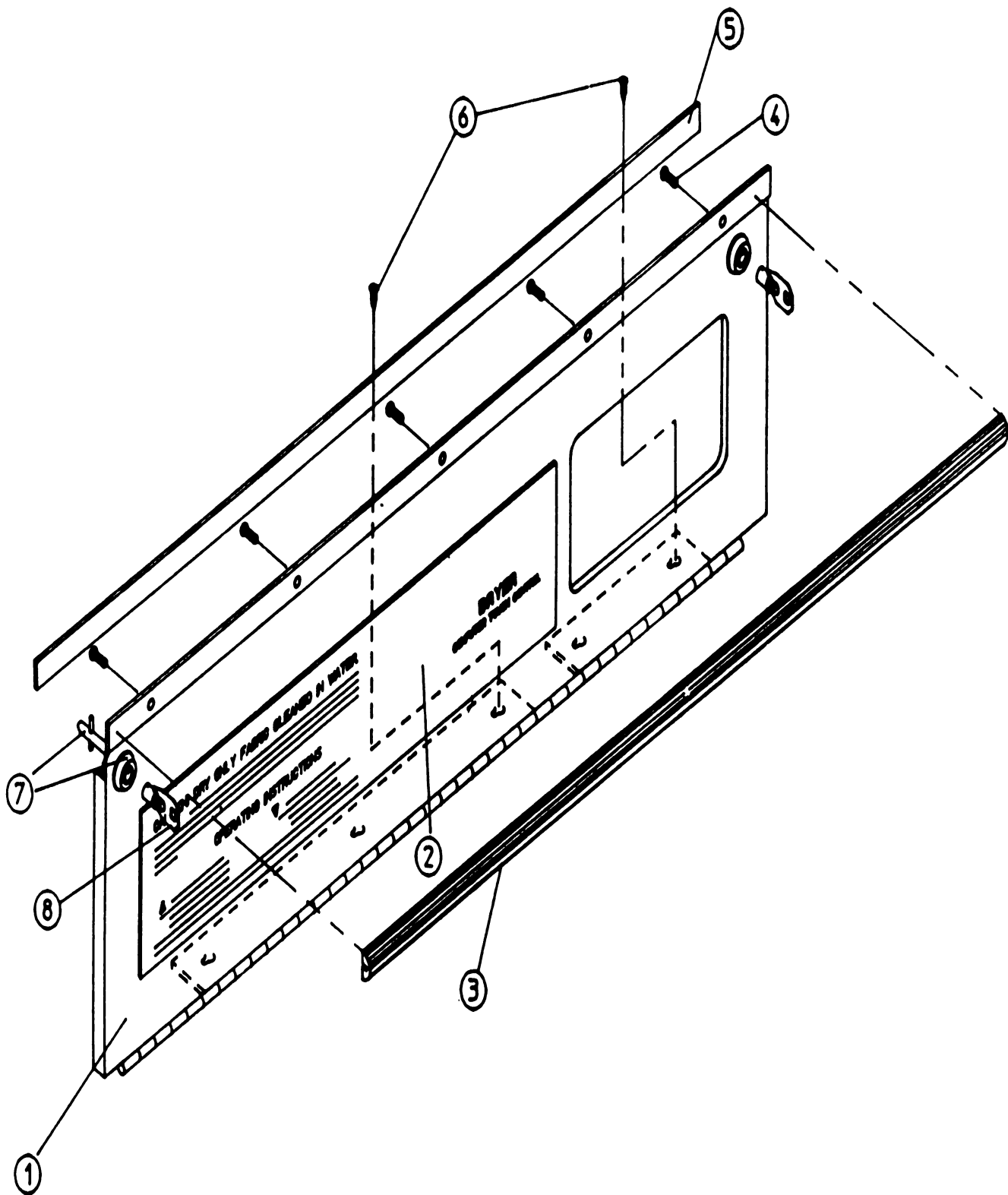
- Product Type
- Part Number
- Model Number
- Part Description

MAYTAG®

©2005 Maytag Services

Section: CABINET - CONTROL DOOR ASSEMBLY

Model: MDG32PC3AW



MA305A2

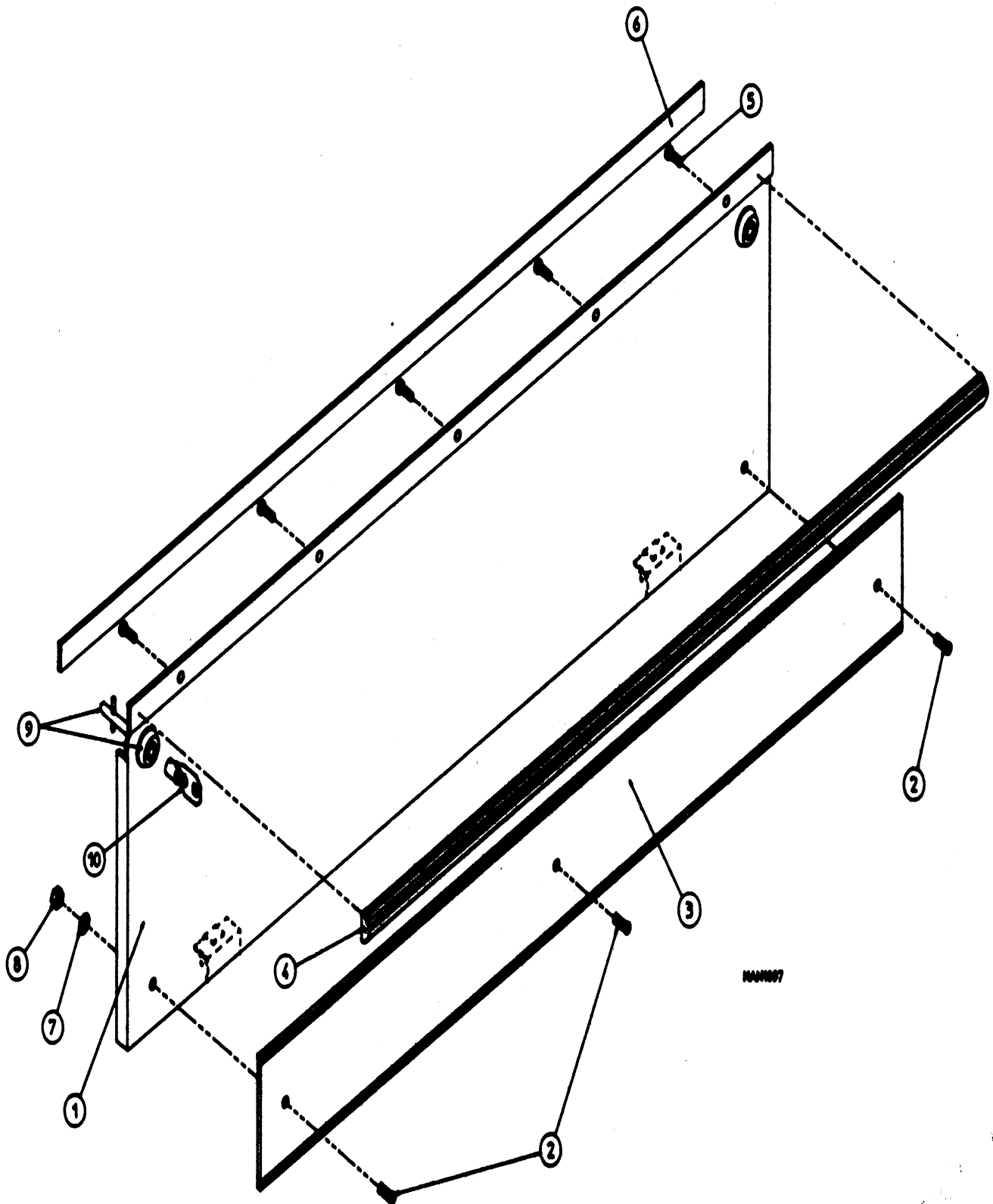
Section: CABINET - CONTROL DOOR ASSEMBLY

No.	Part No.	Description	Series	Qty
0	-----	NOT REQUIRED PART OR SEE NOTE Note: ORDER PARTS FROM AMERICAN DRYER CORP AT 508-678-9000		0
1	A880180	DOOR ASSEMBLY (COMPLETE) Note: (INCLUDES ITEMS 1-5, LESS LOCKS)		1
2	A180228	TRIM, CONTROL DOOR (GRAPHICS)		1
3	A180225	TRIM, CONTROL DOOR (TOP) Note: TRIM, CONTROL DOOR (TOP) (29 5/8")		1
4	A150201	SCREW, MACHINE (#10-32 X 1/4") Note: SCREW, MACHINE (#10-32 X 1/4" PH. RD. HD.)		5
5	A117600	GASKET, TAPE (SOLD IN FEET) Note: TAPE, NOISE SUPPRESSOR (SOLD IN FEET)		3
6	A150301	SCREW, TEK (#8-18 X 7/16 PH Note: SCREW, TEK (#8-18 X 7/16" PH.HD.)		4
7	A160040	LOCK ASSY. Note: (KEYED XX4451, W/KEY)		2

*Color Code (-)=Not Shown #=Series, Serial Prefix or Run No., N=Not Available

Section: CABINET - LINT DOOR ASSEMBLY

Model: MDG32PC3AW



MA305A4

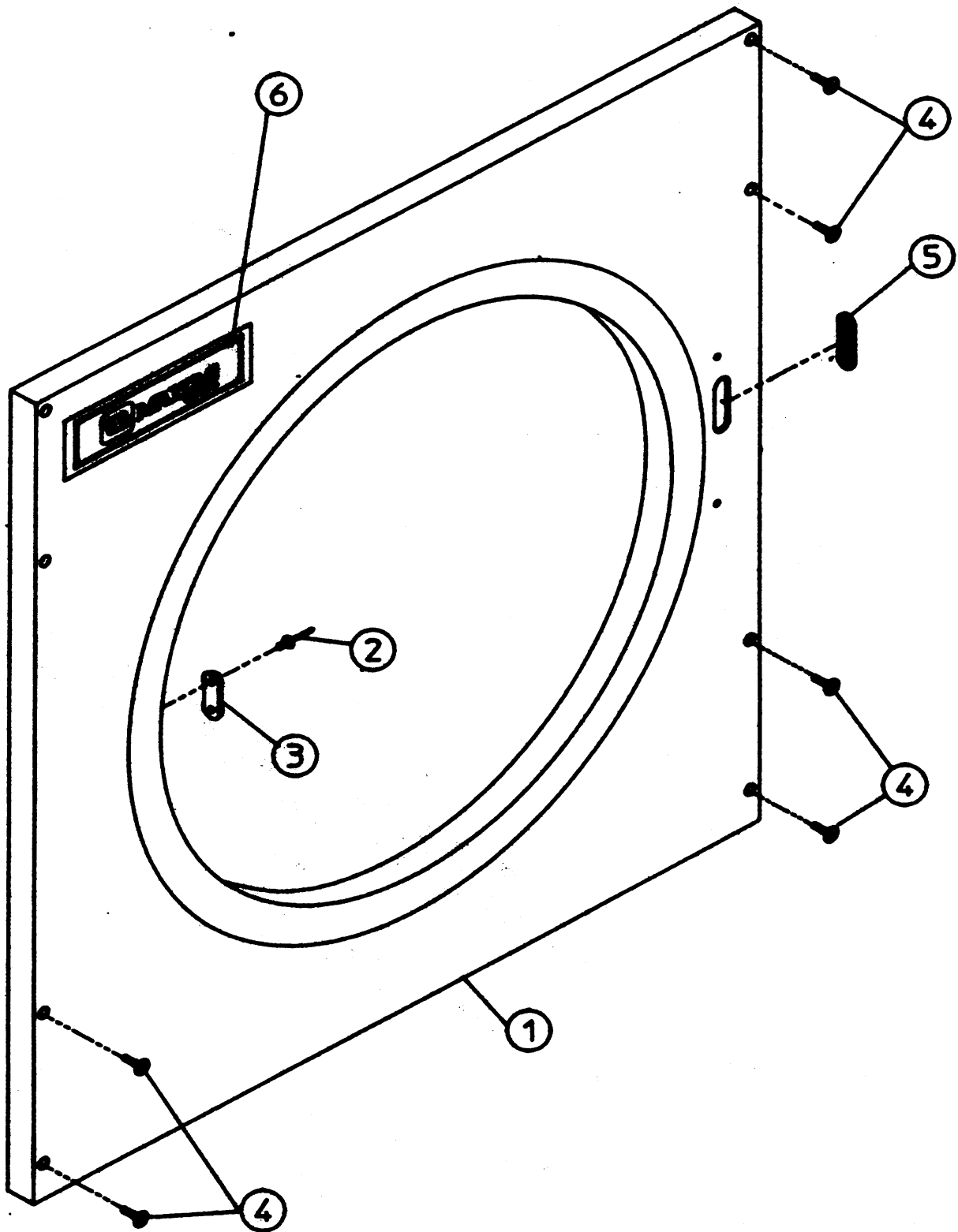
Section: CABINET - LINT DOOR ASSEMBLY

No.	Part No.	Description	Series Qty
0	-----	NOT REQUIRED PART OR SEE NOTE Note: ORDER PARTS FROM AMERICAN DRYER CORP AT 508-678-9000	0
1	A880173	DOOR ASSEMBLY COMPLETE (LINT) Note: DOOR ASSEMBLY COMPLETE (LINT) (INCLUDES 1, 2, 3, 4, 5, 6, 7 AND 8...LESS LOCKS)	1
2	A150001	SCREW, MACHINE (#6-32 X 1/2") Note: SCREW, MACHINE (#6-32 X 1/2")	3
3	A180227	TRIM, LINT DOOR (LWR KICK)	1
4	A180225	TRIM, CONTROL DOOR (TOP) Note: TRIM, LINT DOOR TOP	1
5	A150201	SCREW, MACHINE (#10-32 X 1/4") Note: SCREW, TAP (PH PAN HD)	5
6	A117602	TAPE, NOISE SUPPRESSOR	3
7	A153010	WASHER, STAR (#6) Note: WASHER, STAR (#6)	3
8	A152013	NUT, HEX (#6-32) Note: NUT, HEX (#6-32)	3
9	A160040	LOCK ASSY. Note: (KEYED XXX451, W/KEY)	2

*Color Code (-)=Not Shown #=Series, Serial Prefix or Run No., N=Not Available

Section: CABINET - UPPER FRONT PANEL

Model: MDG32PC3AW



MA305A6

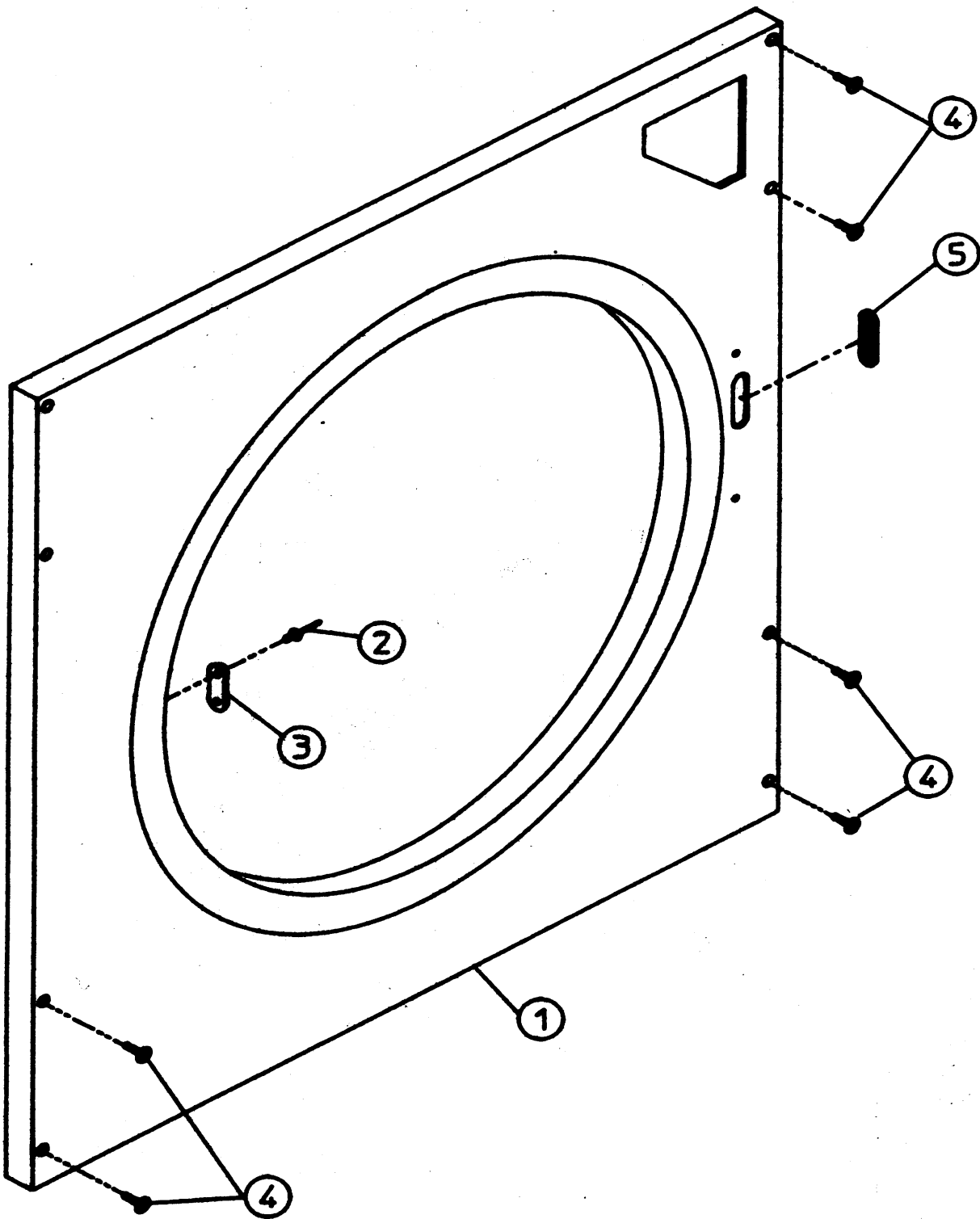
Section: CABINET - UPPER FRONT PANEL

No.	Part No.	Description	Series	Qty
0	-----	NOT REQUIRED PART OR SEE NOTE Note: ORDER PARTS FROM AMERICAN DRYER CORP AT 508-678-9000		0
1	A800684	PANEL ASSEMBLY, FRT. UPPER Note: (INCLUDES 1, 2, 3 & 5)		1
2	A154215	RIVET, POP (5/32") Note: RIVET, POP (1/8")		2
3	A170330	LATCH, DOOR (FRICTION) Note: LATCH, DOOR (FRICTION)		1
4	A150415	SCREW, CRIMPTITE (PH. RD.HD.) Note: SCREW (#10-16 X 1/2" PH RD HD)		8
5	A121405	GROMMET, RUBBER		1
6	A112343	LOGO, MAYTAG (ONLY) Note: LOGO, MAYTAG (ONLY)		1

*Color Code (-)=Not Shown #=Series, Serial Prefix or Run No., N=Not Available

Section: CABINET - LOWER FRONT PANEL

Model: MDG32PC3AW



MA305A8

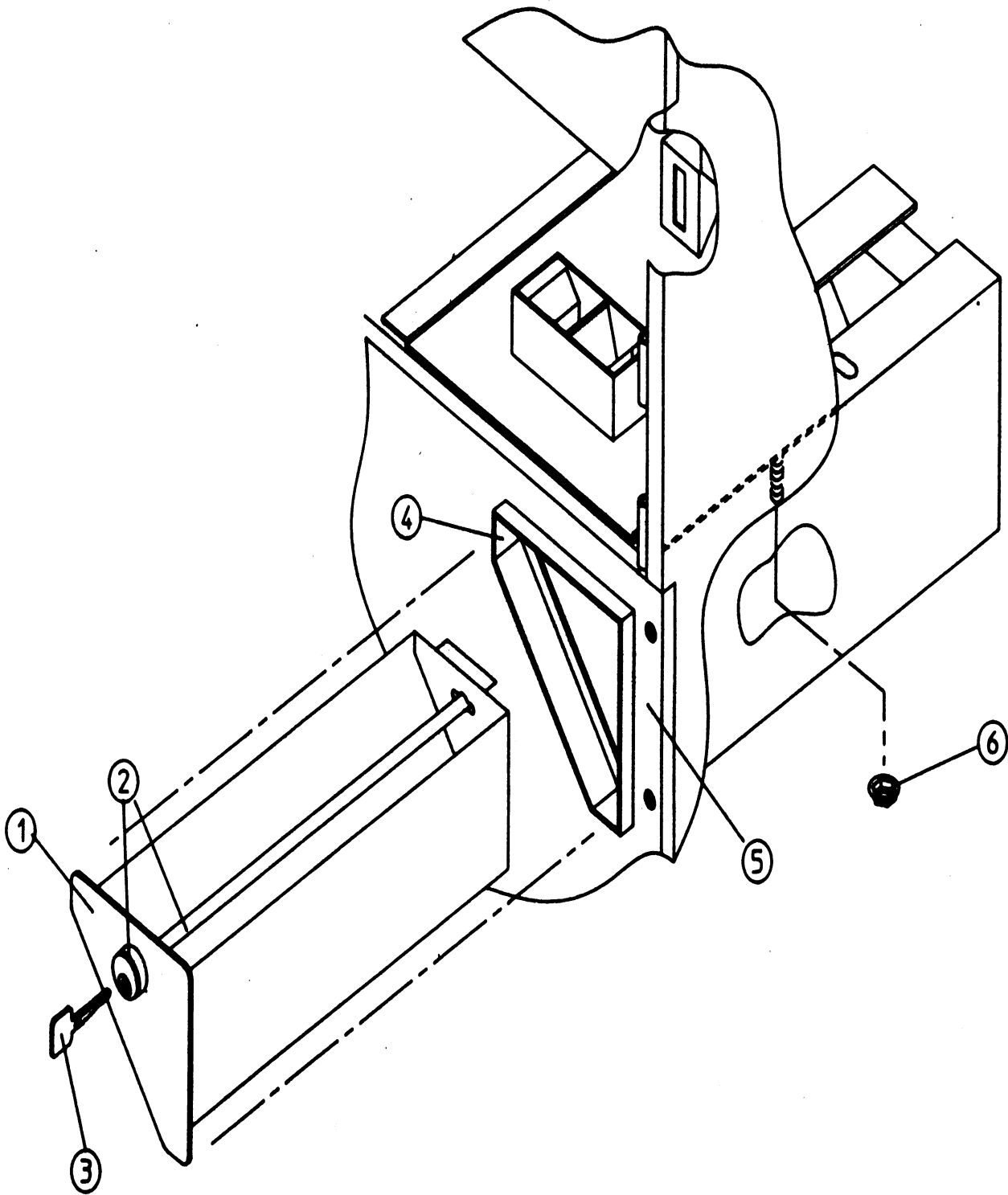
Section: CABINET - LOWER FRONT PANEL

No.	Part No.	Description	Series Qty
0	-----	NOT REQUIRED PART OR SEE NOTE Note: ORDER PARTS FROM AMERICAN DRYER CORP AT 508-678-9000	0
1	A800689	PANEL ASSEMBLY (LWR FRT)	1
2	A154215	RIVET, POP (5/32") Note: RIVET, POP (1/8")	2
3	A170330	LATCH, DOOR (FRICTION) Note: LATCH, DOOR (FRICTION)	1
4	A150415	SCREW, CRIMPTITE (PH. RD.HD.) Note: SCREW (#10-16 X 1/2" PH RD HD)	9

*Color Code (-)=Not Shown #=Series, Serial Prefix or Run No., N=Not Available

Section: COIN VAULT ASSEMBLY

Model: MDG32PC3AW



MA303A10

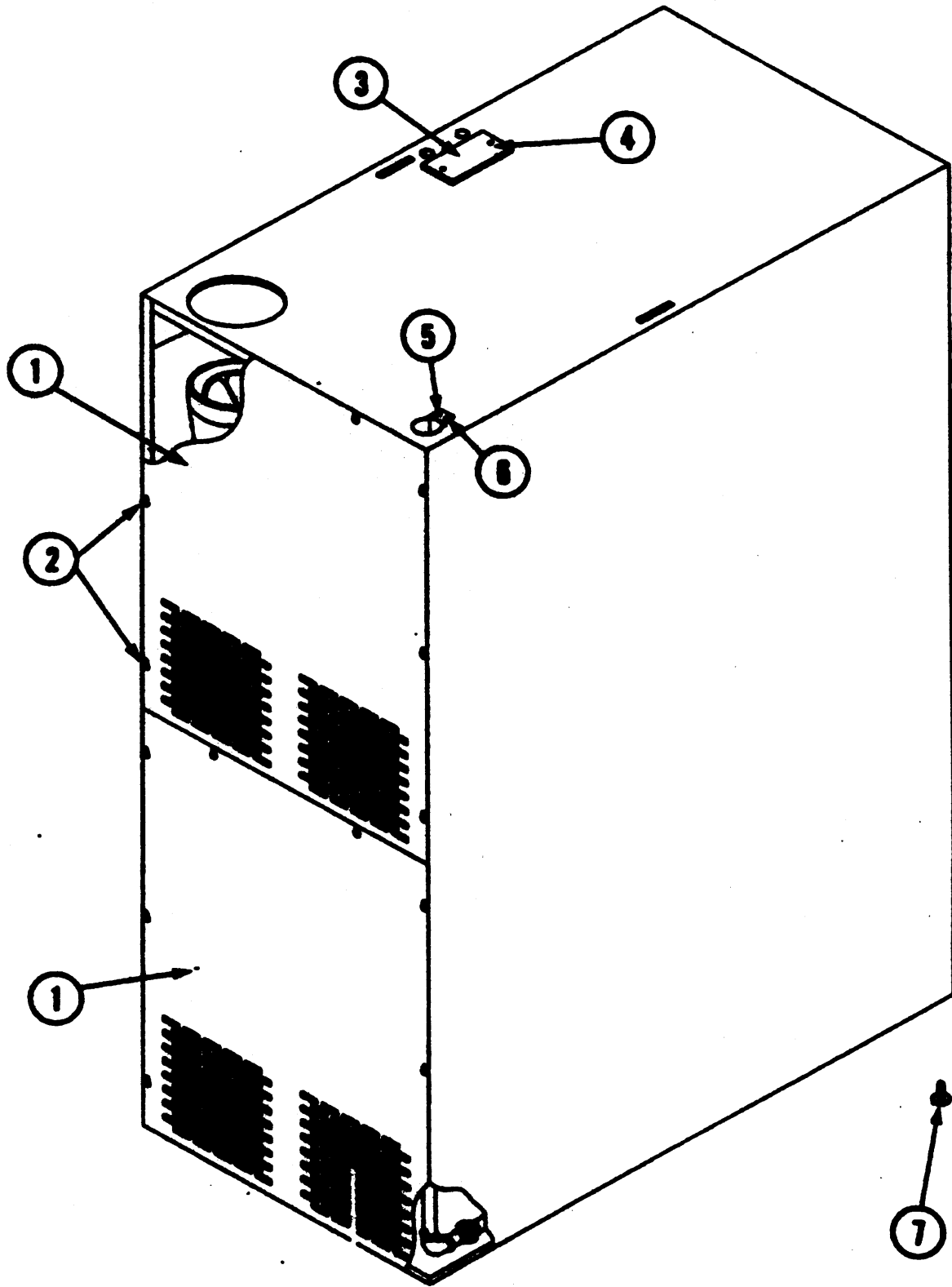
Section: COIN VAULT ASSEMBLY

No.	Part No.	Description	Series	Qty
0	-----	NOT REQUIRED PART OR SEE NOTE Note: ORDER PARTS FROM AMERICAN DRYER CORP AT 508-678-9000		0
1	A880901	FACEPLATE, COIN BOX (ONLY)		1
1	A880118	BOX, COIN ASSEMBLY (LESS LOCK)		1
4	A880117	VAULT ASSEMBLY (LESS LOCK) Note: (INCLUDES 1, 4, 5 & 6)		1
5	A800689	PANEL ASSEMBLY (LWR FRT)		1
6	A152014	NUT, FREE SPIN WASH (#20-1/4) Note: NUT, FREE SPIN WASH (#20-1/4)		4
-	A404500	PAINT, TOUCH-UP (ALM. AEROSOL)		1
-	A404502	PAINT, TOUCH-UP (WHT. AEROSOL)		1

*Color Code (-)=Not Shown #=Series, Serial Prefix or Run No., N=Not Available

Section: BACKGUARD ASSEMBLY

Model: MDG32PC3AW



MA303F13

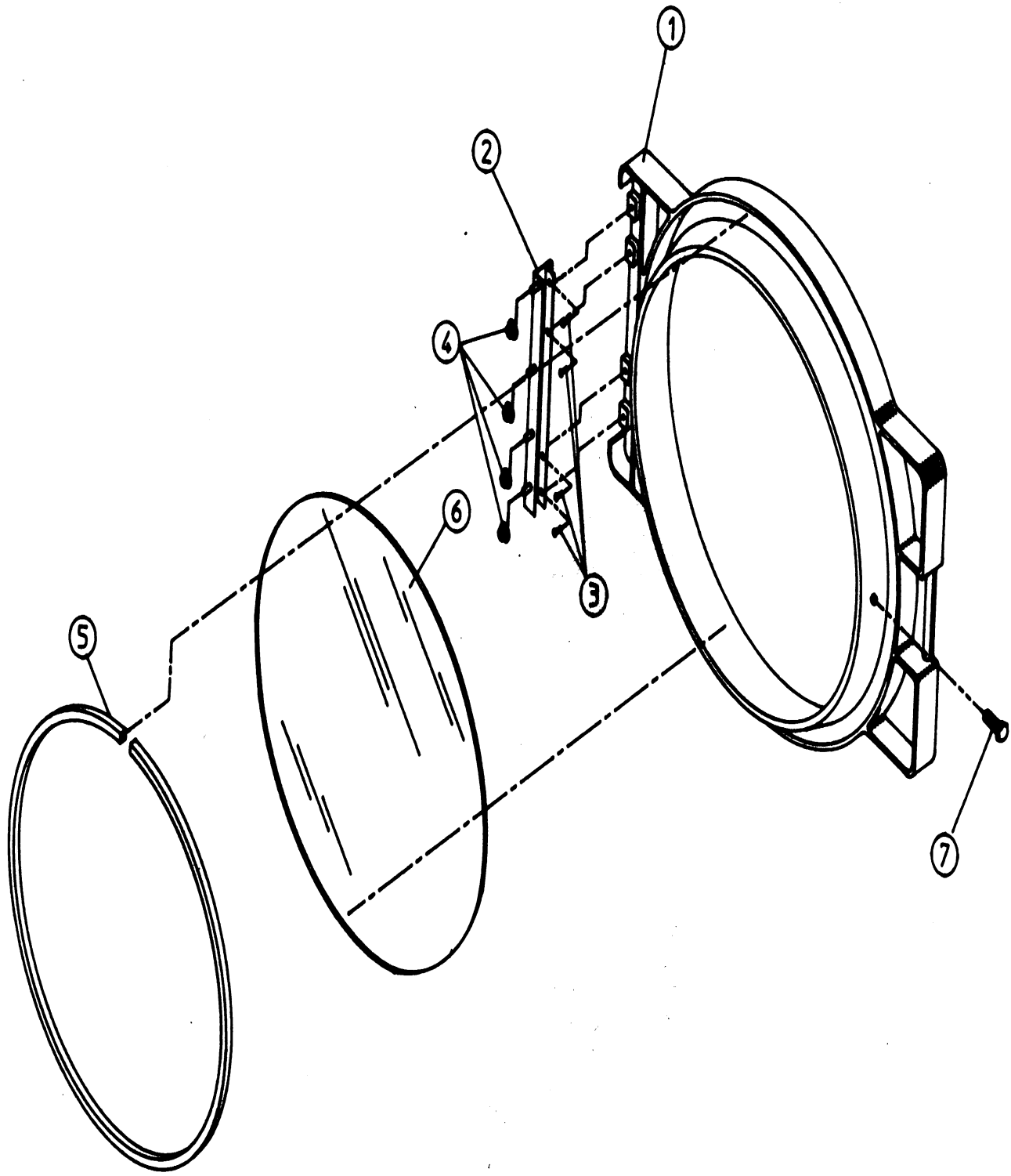
Section: BACKGUARD ASSEMBLY

No.	Part No.	Description	Series Qty
0	-----	NOT REQUIRED PART OR SEE NOTE Note: ORDER PARTS FROM AMERICAN DRYER CORP AT 508-678-9000	0
1	A314406	BACKGUARD ASSEMBLY	2
2	A150301	SCREW, TEK (#8-18 X 7/16 PH Note: SCREW (#8-18 X 7/16" PH. HD)	16
3	A315014	PLATE, COVER (TOP ELEC. BOX)	1
4	A150301	SCREW, TEK (#8-18 X 7/16 PH Note: SCREW (#8-18 X 7/16" PH.HD)	2
5	A318702	BRACKET, TOP PIPE SUPPORT	1
6	A150300	SCREW (#10-32 X 1/2" PH ROUND Note: SCREW (#10 X 1/2" S.D.)	2
7	A103500	LEG, LEVELING (ADJUSTABLE) Note: LEG, LEVELING (ADJUSTABLE)	4

*Color Code (-)=Not Shown #=Series, Serial Prefix or Run No., N=Not Available

Section: DOOR ASSEMBLY

Model: MDG32PC3AW



MA303B1

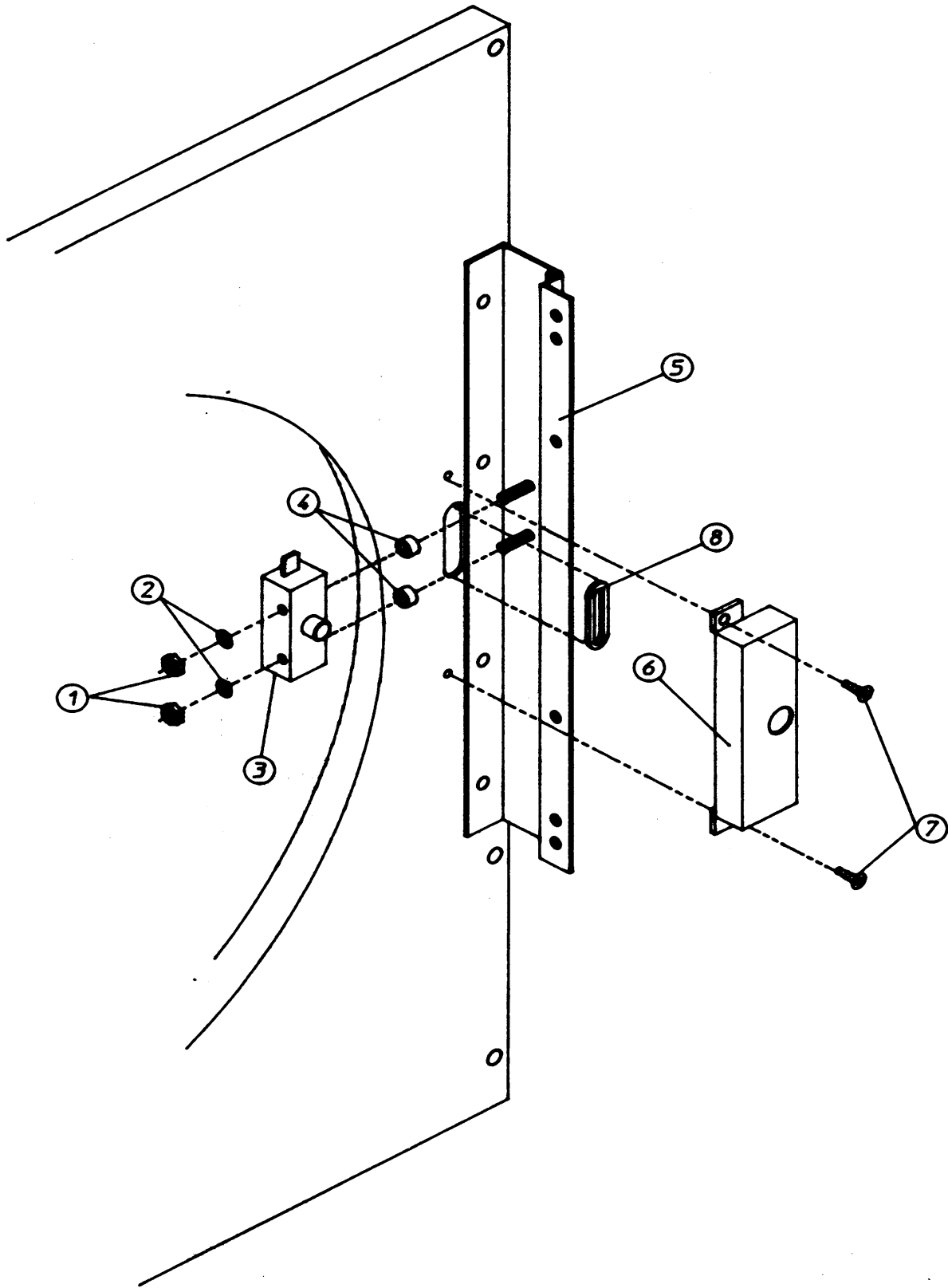
Section: DOOR ASSEMBLY

No.	Part No.	Description	Series	Qty
0	-----	NOT REQUIRED PART OR SEE NOTE Note: ORDER PARTS FROM AMERICAN DRYER CORP AT 508-678-9000		0
-	A882963	DOOR FRAME (METAL)	20	1
-	A103062	HINGE PIN	20	2
1	A881424	DOOR ASSEMBLY COMPLETE (BEIGE)		1
1	A881423	DOOR ASSEMBLY COMPLETE (WHT)		1
2	A800448	HINGE, MAIN DOOR (12 1/2") Note: HINGE, MAIN DOOR (12 1/2")		1
3	A150410	SCREW (#10-24 X 3/8" PH HD) Note: SCREW (#10-24 X 3/8" PH HD)		4
4	A152014	NUT, FREE SPIN WASH (#20-1/4) Note: NUT, WASHER (FREE SPIN)		4
5	A102353	GASKET, MAIN DOOR (69-1/2") Note: GASKET, MAIN DOOR (69-1/2")		1
6	A102210	GLASS, DOOR (20-7/16" ONLY) Note: GLASS, MAIN DOOR (20-7/16")		1
7	A150448	SCREW, S.S. (1/2")		4
8	A170319	SPACER, DOOR GLASS		4
9	A150431	SCREW (#10 X 7/16" DOME HD)		1

*Color Code (-)=Not Shown #=Series, Serial Prefix or Run No., N=Not Available

Section: DOOR SWITCH ASSEMBLY

Model: MDG32PC3AW



MA303B3

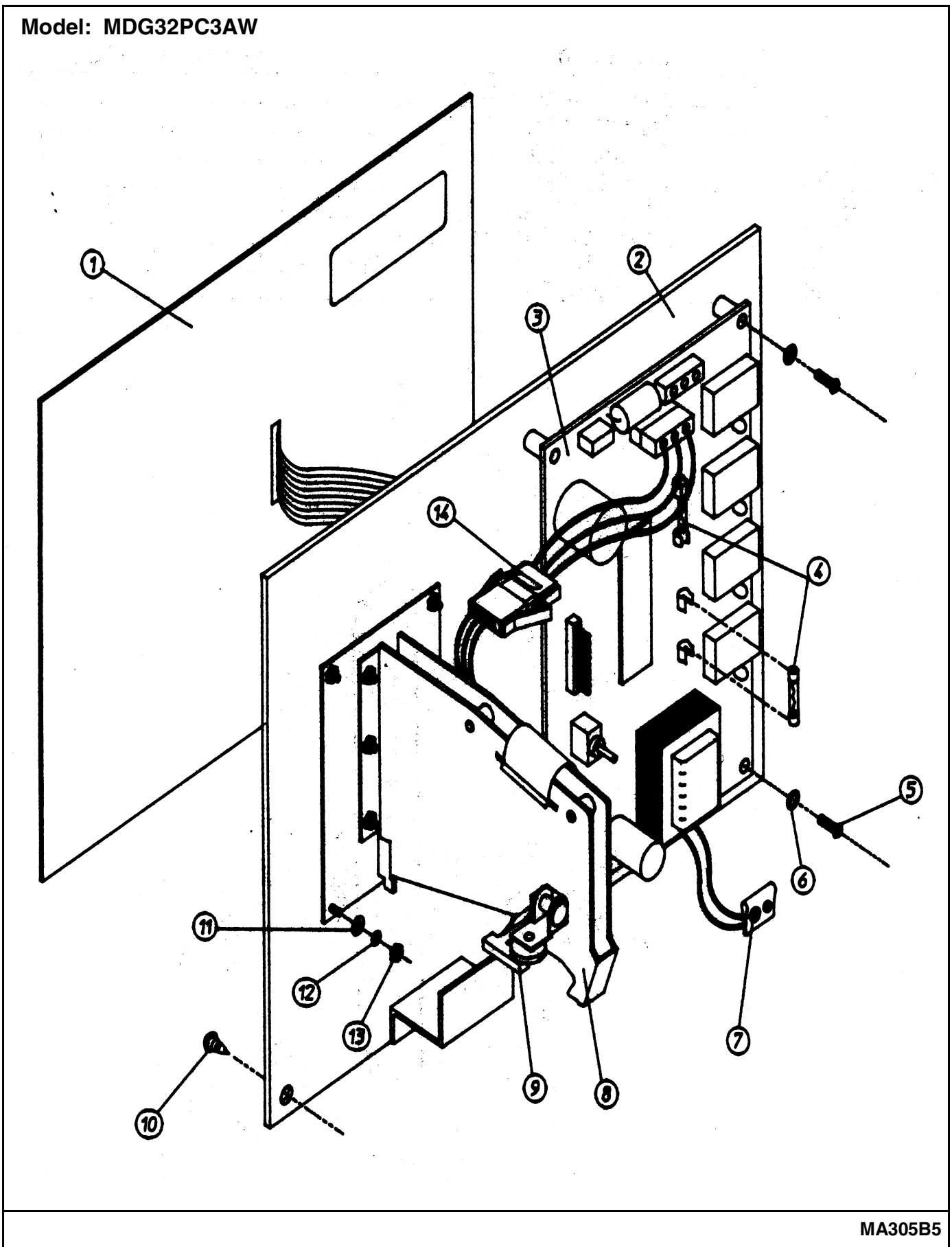
Section: DOOR SWITCH ASSEMBLY

No.	Part No.	Description	Series	Qty
0	-----	NOT REQUIRED PART OR SEE NOTE Note: ORDER PARTS FROM AMERICAN DRYER CORP AT 508-678-9000		0
1	A152013	NUT, HEX (#6-32) Note: NUT, HEX (#6-32)		2
2	A153010	WASHER, STAR (#6) Note: WASHER, STAR (#6)		2
3	A137005	SWITCH, DOOR (SINGLE POLE) Note: SWITCH, DOOR (SINGLE POLE)		1
4	A154281	SPACER, NYLON (3/8") Note: SPACER, NYLON		2
5	A800448	HINGE, MAIN DOOR (12 1/2") Note: HINGE ASSEMBLY (12 1/2" S.S.)		1
6	A313248	HOUSING, MAIN DOOR SWITCH Note: HOUSING, MAIN DOOR SWITCH		1
7	A150201	SCREW, MACHINE (#10-32 X 1/4") Note: SCREW (#10-32 X 1/4" PH PAN)		2
8	A121405	GROMMET, RUBBER		1

*Color Code (-)=Not Shown #=Series, Serial Prefix or Run No., N=Not Available

Section: CONTROL PANEL ASSEMBLY

Model: MDG32PC3AW



MA305B5

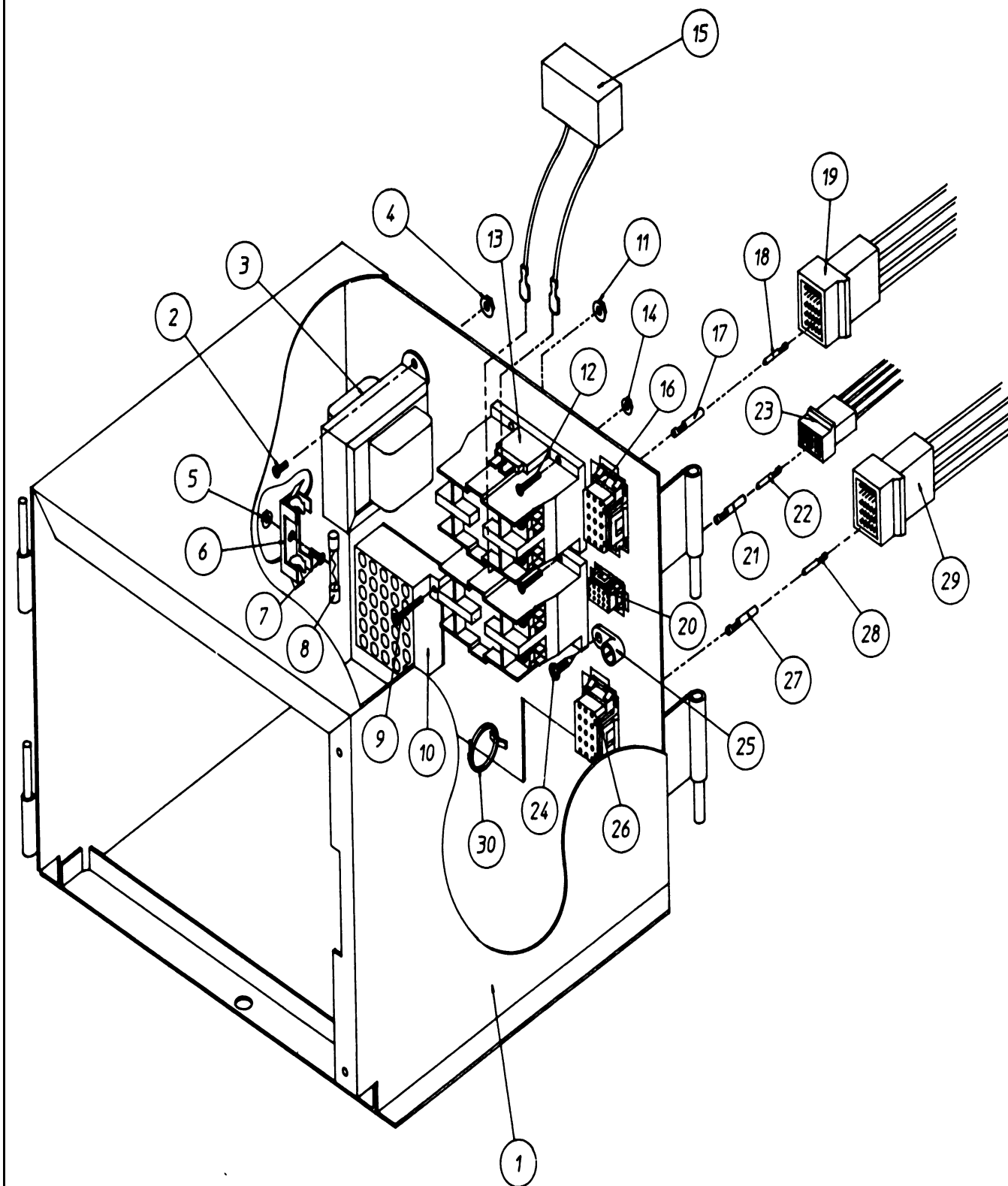
Section: CONTROL PANEL ASSEMBLY

No.	Part No.	Description	Series Qty
0	-----	NOT REQUIRED PART OR SEE NOTE Note: ORDER PARTS FROM AMERICAN DRYER CORP AT 508-678-9000	0
1	A112540	LABEL, KEYBOARD (25C)	1
2	A824007	PANEL, CONTROL ASSEMBLY Note: (INCLUDES 1, 2, 3, 4, 5, 6, 7, 8, 9, 11, 12, 13 & 14)	1
2	A801266	PANEL, CONTROL ASSEMBLY Note: (INCLUDES 1, 2, 5, 6, 8, 9, 11 & 13)	1
2	A801231	PANEL, CONTROL W/ BATTERY BRK) Note: (INCLUDES 1, 2, 5 & 6)	1
3	A137240	CONTROLLER (DMC PHASE 5)	1
4	A136048	FUSE, 1/8 AMP (SLO BLO)	2
5	A150005	SCREW, PHILL (6-32 X 1/4")RND Note: SCREW (#6-32 X 1/4" PH RND HD)	2
6	A153010	WASHER, STAR (#6) Note: WASHER, STAR (#6)	2
7	A824998	HARNESS, CLIP (9V BATTERY) Note: HARNESS, CLIP (9V BATTERY)	1
8	A125150	COIN ACCEPTOR W/OPTIC SWITCH Note: COIN ACCEPTOR W/OPTIC SWITCH	1
9	A137056	SWITCH, OPTIC	1
10	A150301	SCREW, TEK (#8-18 X 7/16 PH Note: SCREW (#8-18 X 7/16")	1
11	A153046	WASHER, FLAT (#4)	4
12	A153045	WASHER, SPLIT LOCK (#4)	4
13	A152016	NUT, HEX (#4-40)	4
14	A824867	HARNESS, COIN SWITCH Note: HARNESS, COIN SWITCH	1

*Color Code (-)=Not Shown #=Series, Serial Prefix or Run No., N=Not Available

Section: CONTROL BOX ASSEMBLY

Model: MDG32PC3AW



MA303B7

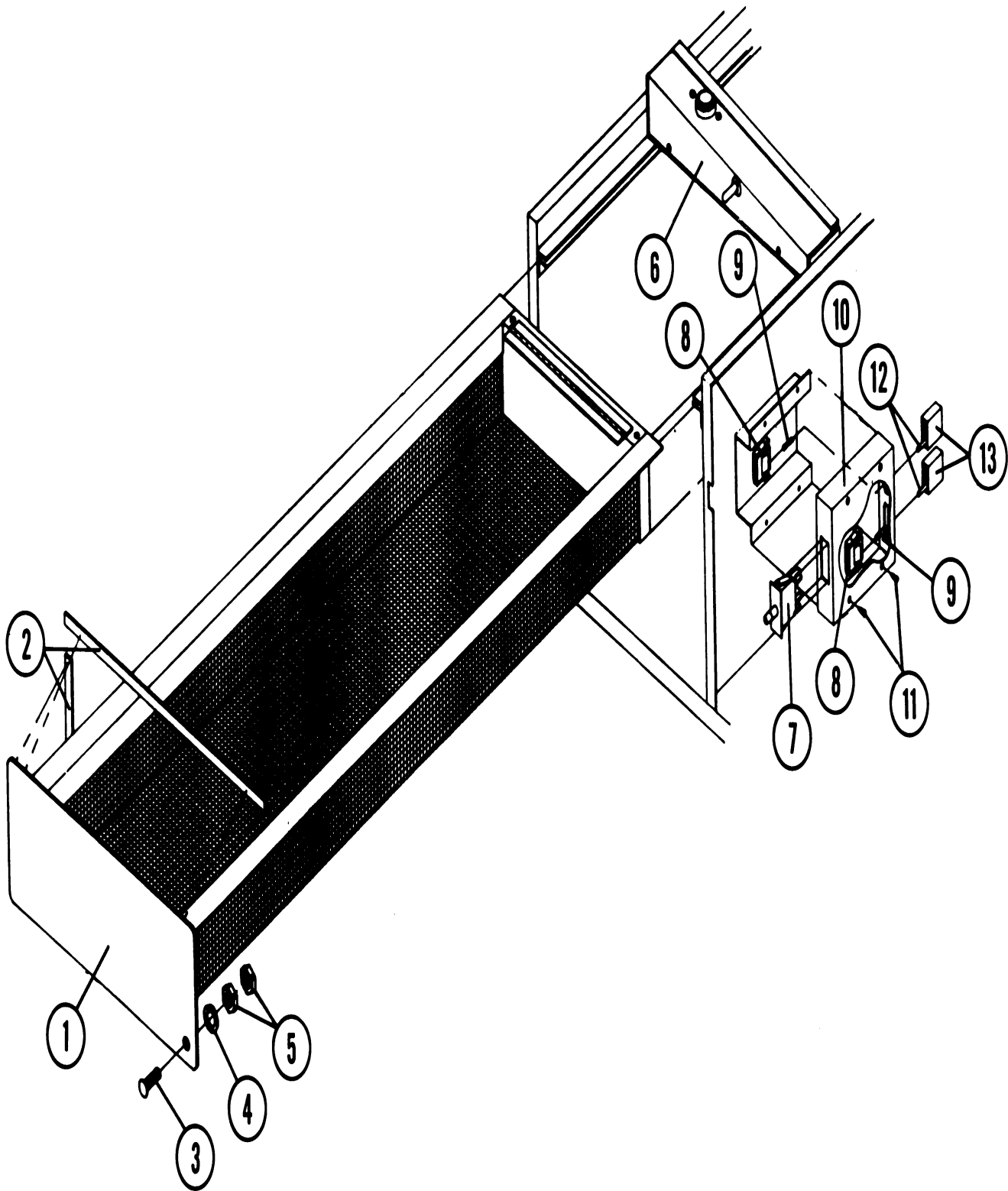
Section: CONTROL BOX ASSEMBLY

No.	Part No.	Description	Series Qty
0	-----	NOT REQUIRED PART OR SEE NOTE Note: ORDER PART FROM AMERICAN DRYER CORP AT 508-678-9000	0
1	A824440	CONTROL BOX ASSEMBLY (24V EL) Note: CONTROL BOX ASSEMBLY (24V EL)	1
2	A150103	SCREW, MACHINE (#8-32 X 3/4" Note: SCREW, MACHINE (#8-32 X 3/4"	2
3	A141403	TRANSFORMER (DSI 24 VAC) Note: TRANSFORMER (DSI 24 VAC)	1
4	A151001	NUT, PAL (#8-32) Note: NUT, PAL (#8-32)	2
5	A151000	PAL NUT (#6-32) Note: NUT, PAL (#6-32)	1
6	A136008	STRIP, FUSE BLOCK (ONLY) Note: BLOCK, FUSE	1
7	A150002	SCREW, MACHINE (RD.HD.) Note: SCREW, MACHINE (#6-32 RND HD)	1
8	A136057	FUSE, 1/2-AMP SLO-BLO	1
9	A150002	SCREW, MACHINE (RD.HD.) Note: SCREW, MACHINE (#6-32 X 1")	2
10	A120715	BLOCK, TERMINAL (30-POSITION) Note: BLOCK, TERMINAL (30 POSITION)	1
11	A151000	PAL NUT (#6-32) Note: NUT, PAL (#6-32)	2
12	A150103	SCREW, MACHINE (#8-32 X 3/4" Note: SCREW, MACHINE (#8-32 X 3/4"	4
13	A132451	CONTACTOR, TWO POLE Note: CONTACTOR, TWO POLE	2
14	A151001	NUT, PAL (#8-32) Note: NUT, PAL (#8-32)	4
15	A824828	RC NETWORK W/CONNECTOR Note: RC NETWORK W/CONNECTOR	2
16	A122626	CONNECTOR, SOCKET (15-PIN)	1
17	A122705	TERMINAL, SOCKET (ONLY)	9
18	A122704	TERMINAL, PIN (ONLY)	9
19	A122625	CONNECTOR (15 PIN...ONLY)	1
19	A137025	STRAIN RELIEF (6/15 POS.) Note: STRAIN RELIEF (6/15 POS.)	1
20	A122631	CONNECTOR, SOCKET (6 PIN)	1
21	A122705	TERMINAL, SOCKET (ONLY)	6
22	A122704	TERMINAL, PIN (ONLY)	6
23	A122630	CONNECTOR (6 PIN)	1
23	A137025	STRAIN RELIEF (6/15 POS.) Note: STRAIN RELIEF (6/15 POS.)	1
24	A150415	SCREW, CRIMPTITE (PH. RD.HD.) Note: SCREW, CRIMPTITE	1
25	A121010	LUG, GROUND (L-70)	1
26	A122626	CONNECTOR, SOCKET (15-PIN) Note: CONNECTOR (15 PIN)	1
27	A122705	TERMINAL, SOCKET (ONLY)	9
28	A122704	TERMINAL, PIN (ONLY)	9
29	A122625	CONNECTOR (15 PIN...ONLY)	1
29	A137025	STRAIN RELIEF (6/15 POS.) Note: STRAIN RELIEF (6/15 POS.)	1
30	A121494	TIE, WIRE (PUSH MOUNT)	10
-	A122801	TOOL, EXTRACTION (PIN/SOCKET) Note: TOOL, EXTRACTION (PIN/SOCKET)	1
-	A122800	TOOL, EXTRACTION Note: (MICROPROCESSOR PIN-FEMALE)	1

*Color Code (-)=Not Shown #=Series, Serial Prefix or Run No., N=Not Available

Section: LINT BASKET & LINT SWITCH BOX

Model: MDG32PC3AW



MA303B9

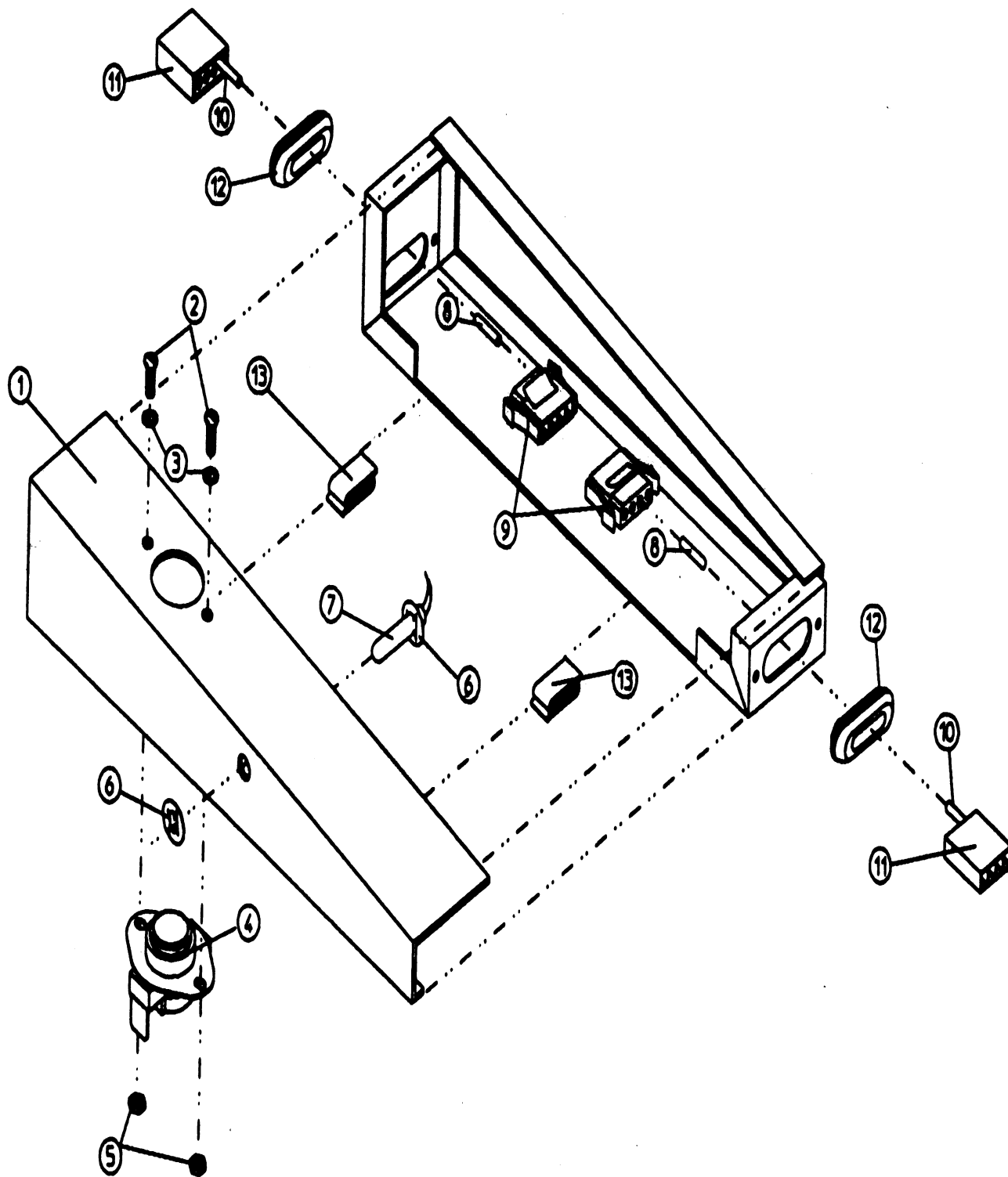
Section: LINT BASKET & LINT SWITCH BOX

No.	Part No.	Description	Series	Qty
0	-----	NOT REQUIRED PART OR SEE NOTE Note: ORDER PART FROM AMERICAN DRYER CORP AT 508-678-9000		0
1	A800436	BASKET, LINT (COMPLETE) Note: (INCLUDES 1 & 2)		1
2	A117600	GASKET, TAPE (SOLD IN FEET) Note: TAPE, NOISE SUPPRESSOR (SOLD IN FEET)		2
3	A153526	STUD, SELF CLINCHING		1
4	A153007	WASHER, LOCK (1/4") Note: WASHER, LOCK (1/4")		1
5	A152002	HEX NUT (#20-1/4") Note: HEX NUT (#20-1/4")		2
6	A880258	BRACKET, TEMPERATURE SENSOR		1
7	A122116	SWITCH, LINT BASKET		1
8	A122605	CONNECTOR, 4-PIN SOCKET Note: CONNECTOR, SOCKET (4 PIN)		2
9	A122701	TERMINAL, SOCKET (ONLY) Note: TERMINAL, SOCKET		8
10	A304037	LINT BASKET SWITCH BOX ASSY. Note: (INCLUDES 7, 8, 9 & 10)		1
10	A800261	BOX, LINT SWITCH ASSY. Note: BOX, LINT SWITCH ASSY. (INCLUDES 7, 8, 9 & 10)		1
11	A150301	SCREW, TEK (#8-18 X 7/16 PH Note: SCREW, TEK		4
12	A122700	TERMINAL, PIN Note: TERMINAL, PIN		8
13	A122604	CONNECTOR (4 PIN) Note: CONNECTOR (4 PIN)		2
-	A122801	TOOL, EXTRACTION (PIN/SOCKET) Note: TOOL, EXTRACTION (PIN/SOCKET)		1

*Color Code (-)=Not Shown #=Series, Serial Prefix or Run No., N=Not Available

Section: TEMPERATURE SENSOR PROBE

Model: MDG32PC3AW



MA303B11

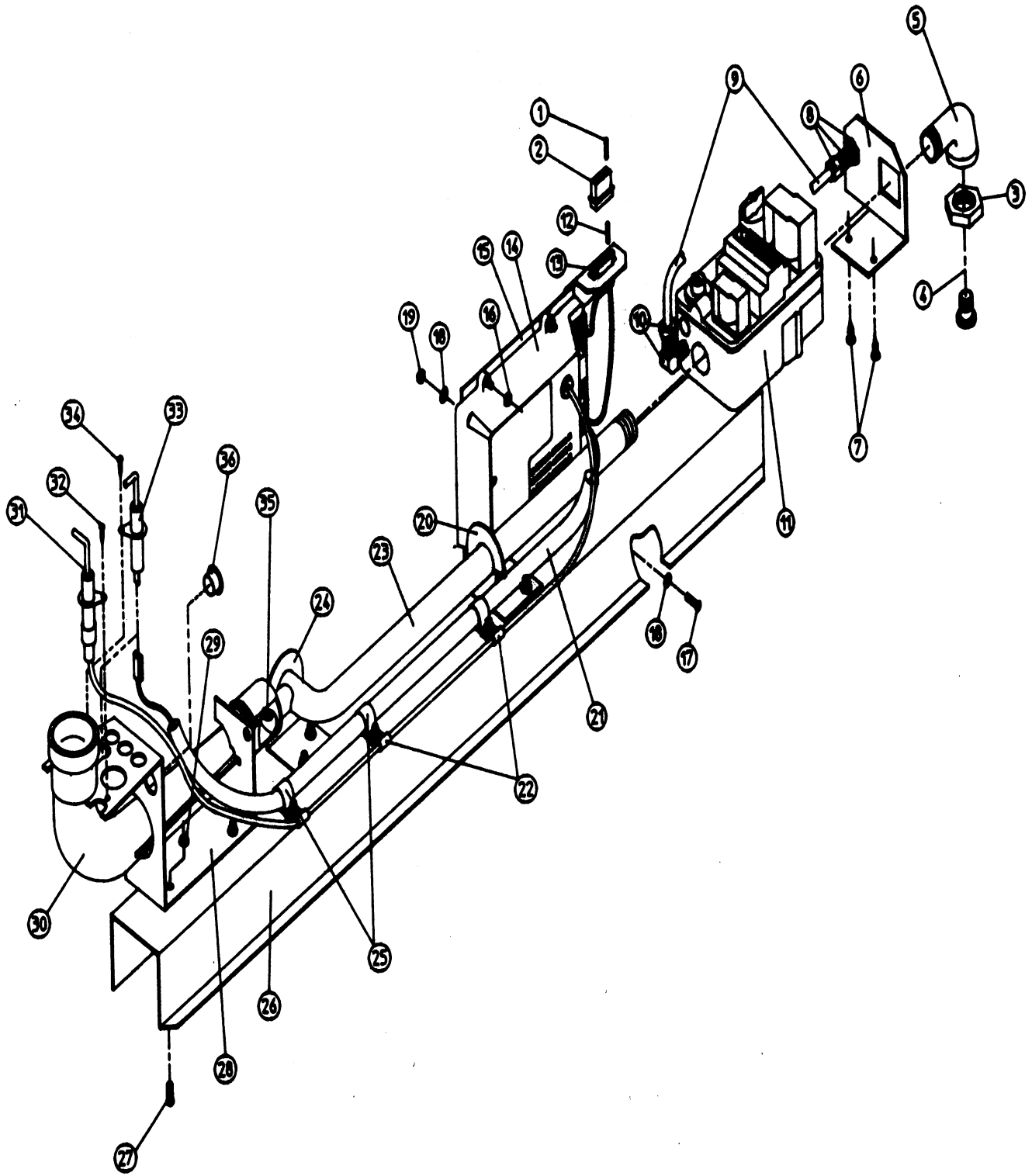
Section: TEMPERATURE SENSOR PROBE

No.	Part No.	Description	Series	Qty
0	-----	NOT REQUIRED PART OR SEE NOTE Note: ORDER PART FROM AMERICAN DRYER CORP AT 508-678-9000		0
1	A8800258	BRACKET, TEMPERATURE SENSOR		1
2	A150005	SCREW, PHILL (6-32 X 1/4")RND Note: SCREW, MACHINE (#6-32 X 1/4")		2
3	A153010	WASHER, STAR (#6) Note: WASHER, STAR		2
4	A130107	THERMOSTAT, LARGE (160 DEG.) Note: THERMOSTAT, LARGE (160 DEG.)		1
5	A152013	NUT, HEX (#6-32) Note: NUT, HEX (#6-32)		2
6	A154007	FASTENER, PUSH-ON (1/4") Note: FASTENER, PUSH-ON		2
7	A880111	PROBE, TEMPERATURE SENSOR Note: (INCLUDES 6, 7, 8 & 9)		1
8	A122701	TERMINAL, SOCKET (ONLY) Note: TERMINAL, SOCKET		8
9	A122605	CONNECTOR, 4-PIN SOCKET Note: CONNECTOR, SOCKET (4 PIN)		2
10	A122700	TERMINAL, PIN Note: TERMINAL, PIN		8
11	A122604	CONNECTOR (4 PIN) Note: CONNECTOR (4 PIN)		2
11	A122801	TOOL, EXTRACTION (PIN/SOCKET) Note: TOOL, EXTRACTION (PIN/SOCKET)		1
12	A121405	GROMMET, RUBBER		2
13	A154060	CLIP "S"		2

*Color Code (-)=Not Shown #=Series, Serial Prefix or Run No., N=Not Available

Section: GAS VALVE TRAIN ASSEMBLY

Model: MDG32PC3AW



MA303B13

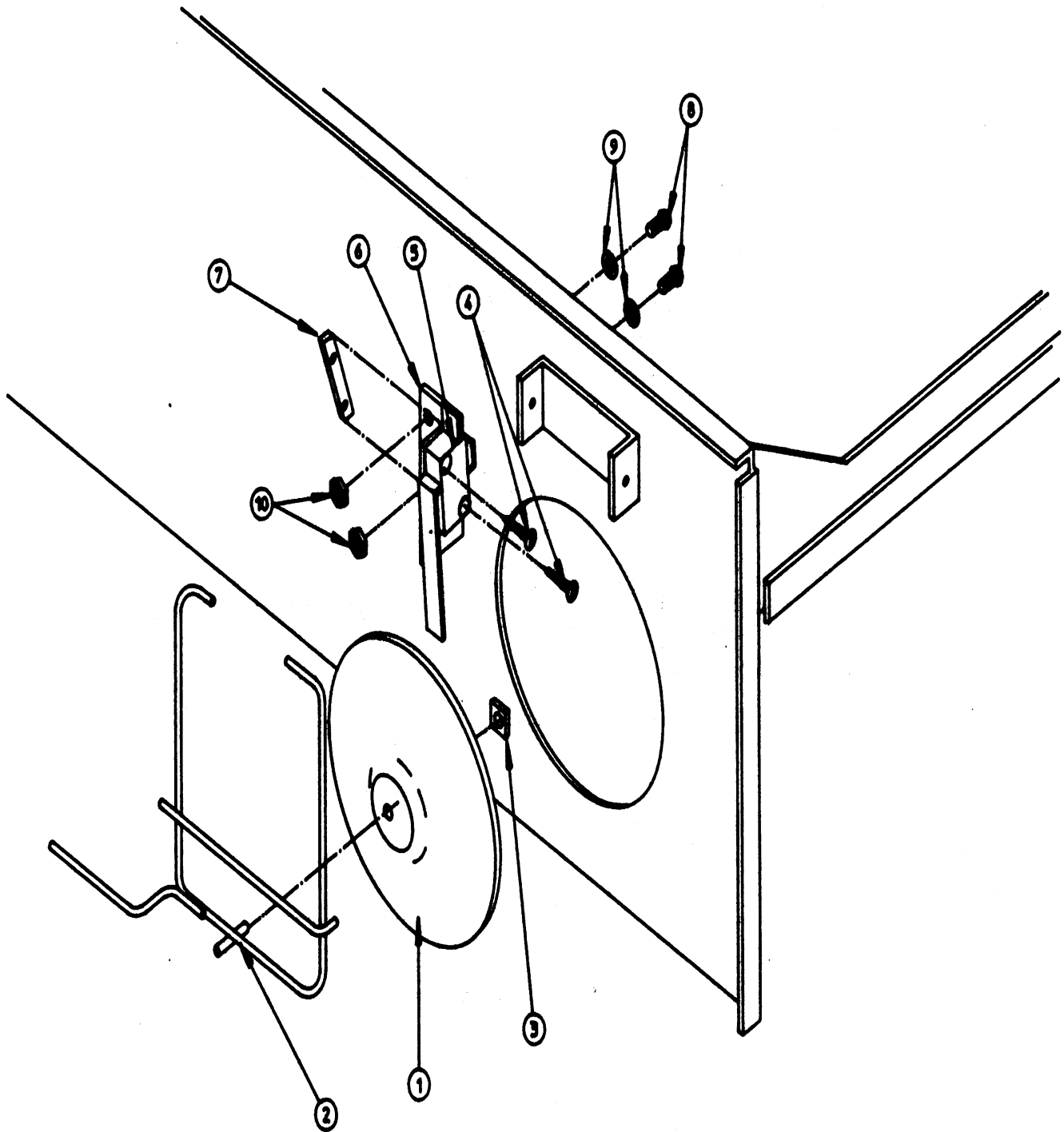
Section: GAS VALVE TRAIN ASSEMBLY

No.	Part No.	Description	Series	Qty
0	-----	NOT REQUIRED PART OR SEE NOTE Note: ORDER PART FROM AMERICAN DRYER CORP. AT 508-678-9000		0
1	A122700	TERMINAL, PIN Note: TERMINAL, PIN		2
2	A122604	CONNECTOR (4 PIN) Note: CONNECTOR (4 PIN)		1
3	A141325	COLLAR, TAIL PIECE Note: COLLAR, TAIL PIECE		1
4	A141303	TAIL PIECE, 1/2" UNION Note: TAIL PIECE, 1/2" UNION		1
5	A142506	ELBOW, STREET (1/2" X 1/2") Note: ELBOW, STREET (1/2" X 1/2")		1
6	A318712	BRACKET, GAS VALVE PIPE		1
7	A150301	SCREW, TEK (#8-18 X 7/16 PH Note: SCREW, TEK (#8-18 X 7/16")		2
8	A143259	FITTING, BULKHEAD		1
9	A143100	TUBING, ALUMINUM (1/4")		1
10	A143203	ADAPTER, LINE (90 DEG.)		1
11	A140411	CONVERSION KIT, GAS VALVE Note: CONVERSION KIT, GAS VALVE		1
11	A128927	VALVE, REDUNDANT (1/2" 24VAC) Note: VALVE, REDUNDANT (1/2" 24VAC)		1
12	A122701	TERMINAL, SOCKET (ONLY) Note: TERMINAL, SOCKET		2
13	A122801	TOOL, EXTRACTION (PIN/SOCKET) Note: TOOL, EXTRACTION		1
13	A122605	CONNECTOR, 4-PIN SOCKET Note: CONNECTOR, SOCKET (4 PIN)		1
14	A880815	MODULE, DSI Note: MODULE, DSI		1
15	A850808	BRACKET, MOUNTING (DSI MODULE)		1
16	A151000	PAL NUT (#6-32) Note: NUT, PAL (#6-32)		4
17	A153528	STUD, SELF CLINCHING		2
18	A153012	WASHER, STAR (#8)		2
19	A152001	NUT, HEX (#8-32)		2
20	A318711	BRACKET, NOTCHED PIPE		1
21	A121060	FLEXTITE, CLEAR (5/8")		4
22	A121492	CLAMP, NYLON (3/16")		3
23	A141225	MANIFOLD, SINGLE PORT		1
24	A318700	BRACKET, PIPE (BENT) Note: BRACKET, PIPE		1
25	A141491	CLAMP, NYLON (5/8")		3
26	A801022	SLIDE, GAS VALVE TRAIN		1
26	A319522	VALVE, GAS TRAIN ASSEMBLY Note: (INCLUDES 3 - 36 & 38)		1
27	A153528	STUD, SELF CLINCHING		9
28	A318009	BRACKET, BURNER TUBE (PSE)		1
29	A151001	NUT, PAL (#8-32) Note: NUT, PAL (#8-32)		6
30	A141130	TUBE, BURNER W/SHUTTER		1
31	A128917	IGNITER W/LEAD		1
32	A150315	SCREW (#6 X 3/8" PH HD)		1
33	A128918	SENSOR, FLAME		1
34	A150315	SCREW (#6 X 3/8" PH HD)		1
35 N	140814	ORIFICE, BURNER (LP #38)		1
35 N	140828	ORIFICE, BURNER (NAT. #20)		1
36	A121300	BUSHING, OPEN/CLOSED		2
-	A880119	CONVERSION KIT (LP) Note: (INCLUDES PARTS FOR BOTH TUMBLERS)		1

*Color Code (-)=Not Shown #=Series, Serial Prefix or Run No., N=Not Available

Section: SAIL SWITCH ASSEMBLY

Model: MDG32PC3AW



MA303C1

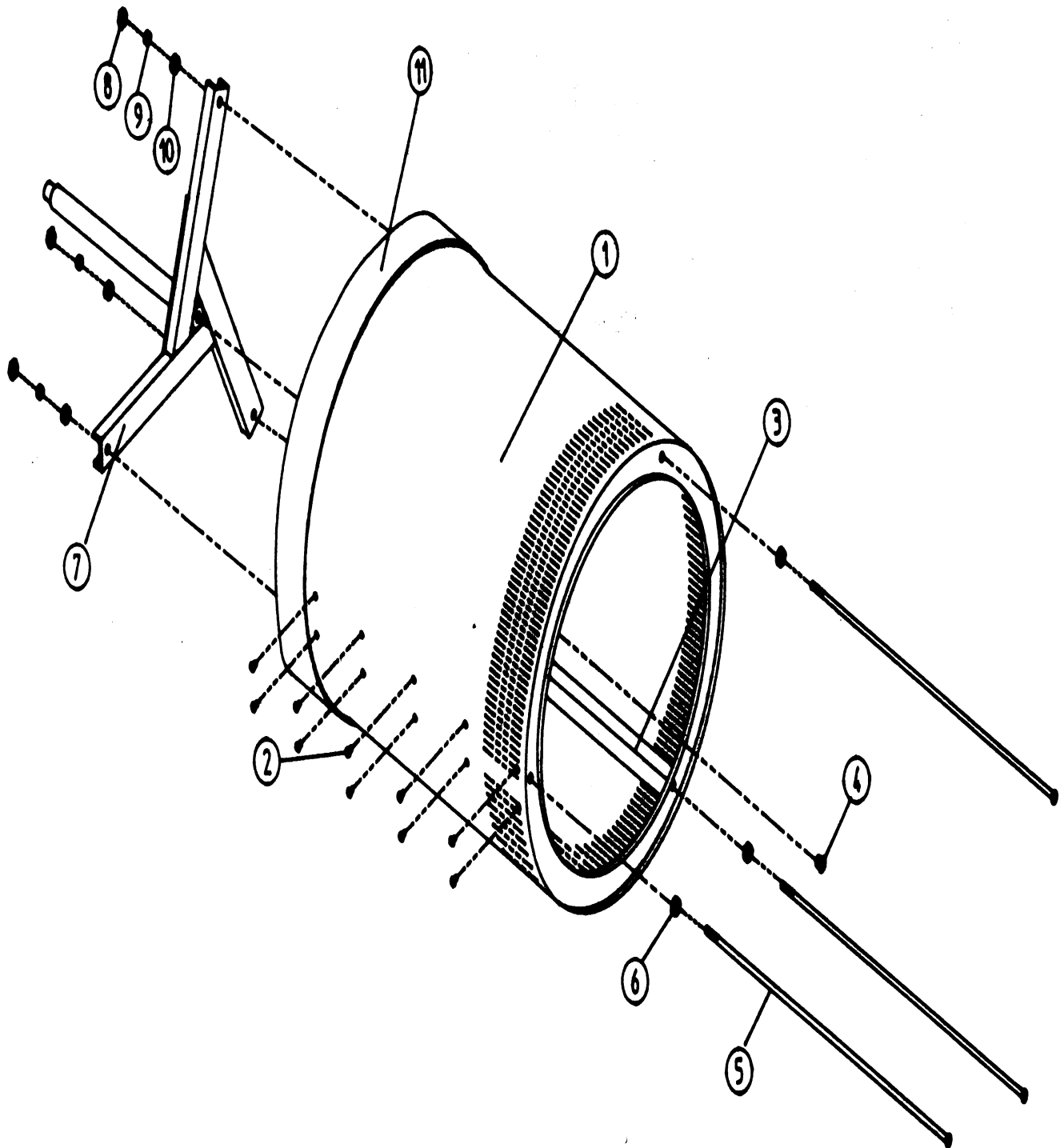
Section: SAIL SWITCH ASSEMBLY

No.	Part No.	Description	Series	Qty
0	-----	NOT REQUIRED PART OR SEE NOTE Note: ORDER PART FROM AMERICAN DRYER CORP AT 508-678-9000		0
1	A309206	DAMPER, SAIL SWITCH		1
1	A802805	SAIL SWITCH ROD & DAMPER ASSY.		1
2	A105550	ROD, SAIL SWITCH		1
3	A154002	FASTENER, PUSH-ON (1/8")		1
4	A150303	SCREW (#4 X 3/4")		2
5	A122200	SWITCH, SAIL		1
5	A802807	SAIL SWITCH BRACKET ASSY.		1
6	A319208	BRACKET, SAIL SWITCH		1
7	A154004	NUT, TWIN SPEED		1
8	A150001	SCREW, MACHINE (#6-32 X 1/2")		2
9	A153010	WASHER, STAR (#6)		2
10	A152000	NUT, HEX (#6-32)		2

*Color Code (-)=Not Shown #=Series, Serial Prefix or Run No., N=Not Available

Section: TUMBLER & SUPPORT ASSEMBLY

Model: MDG32PC3AW



MA303C3

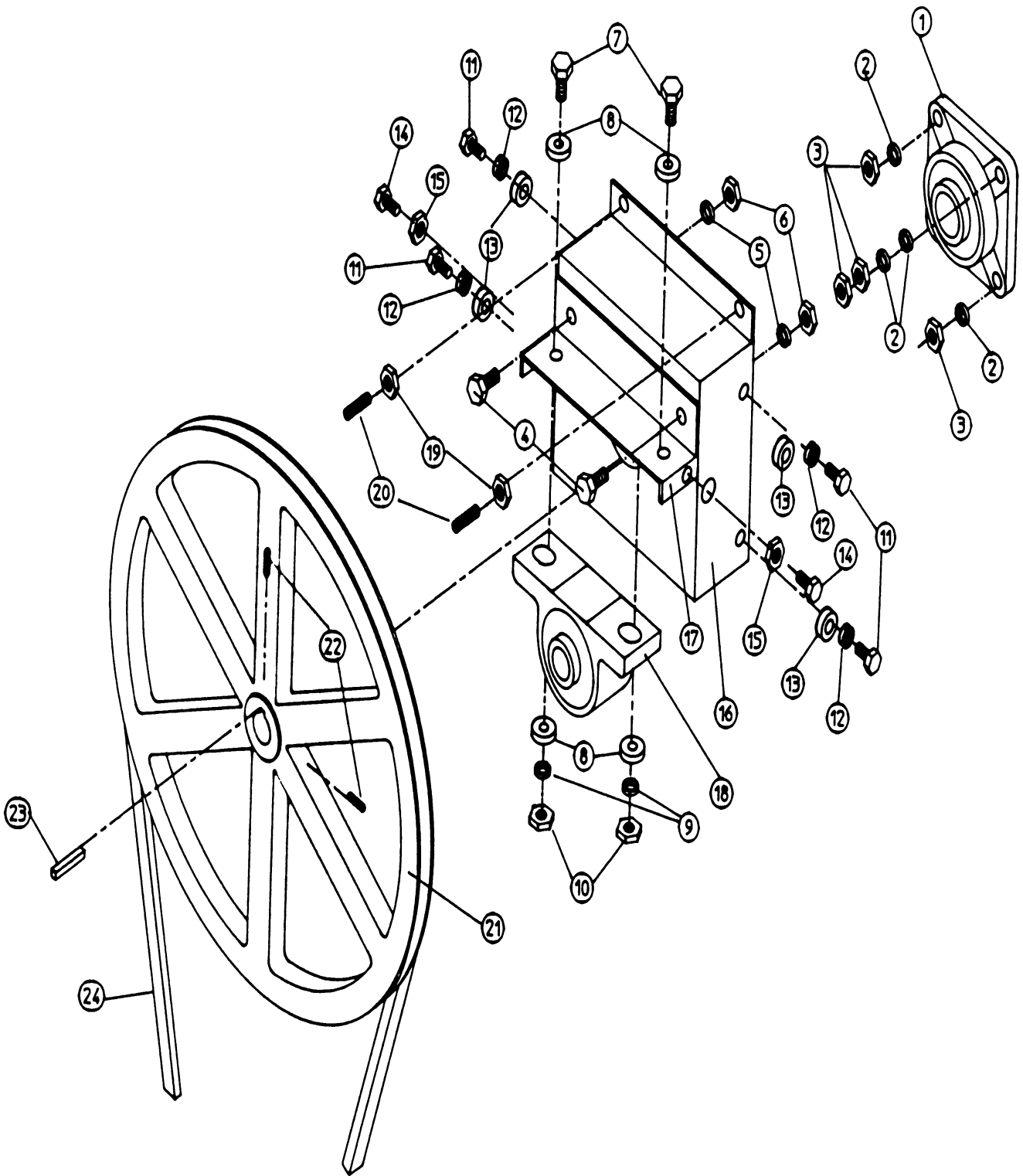
Section: TUMBLER & SUPPORT ASSEMBLY

No.	Part No.	Description	Series Qty
0	-----	NOT REQUIRED PART OR SEE NOTE Note: ORDER PARTS FROM AMERICAN DRYER CORP AT 508-678-9000	0
1	A800833	TUMBLER W/FELT COLLAR Note: (INCLUDES 1, 2, 3 & 11)	1
1	A800723	TUMBLER & SUPPORT ASSY. Note: (INCLUDES 1 - 11)	1
2	A150415	SCREW, CRIMPTITE (PH. RD.HD.)	30
3	A301315	RIB, SHORT TAPERED Note: RIB, SHORT TAPERED	2
3	A301316	RIB, TALL TAPERED	1
4	A150518	SCREW, SOCKET HEAD	1
5	A100902	ROD, TIE (#18-5/16" X 31")	3
6	A153001	WASHER, FLAT (5/16") Note: WASHER, FLAT (5/16")	3
7	A800617	SUPPORT, TUMBLER	1
8	A152004	NUT, HEX (#18-5/16) Note: NUT, HEX (#18-5/16)	3
9	A153002	WASHER, LOCK (5/16") Note: WASHER, LOCK (5/16")	3
10	A153001	WASHER, FLAT (5/16") Note: WASHER, FLAT (5/16")	3
11	A116003	COLLAR, FELT	1

*Color Code (-)=Not Shown #=Series, Serial Prefix or Run No., N=Not Available

Section: TUMBLER - BEARING ASSEMBLY

Model: MDG32PC3AW



MAN0354

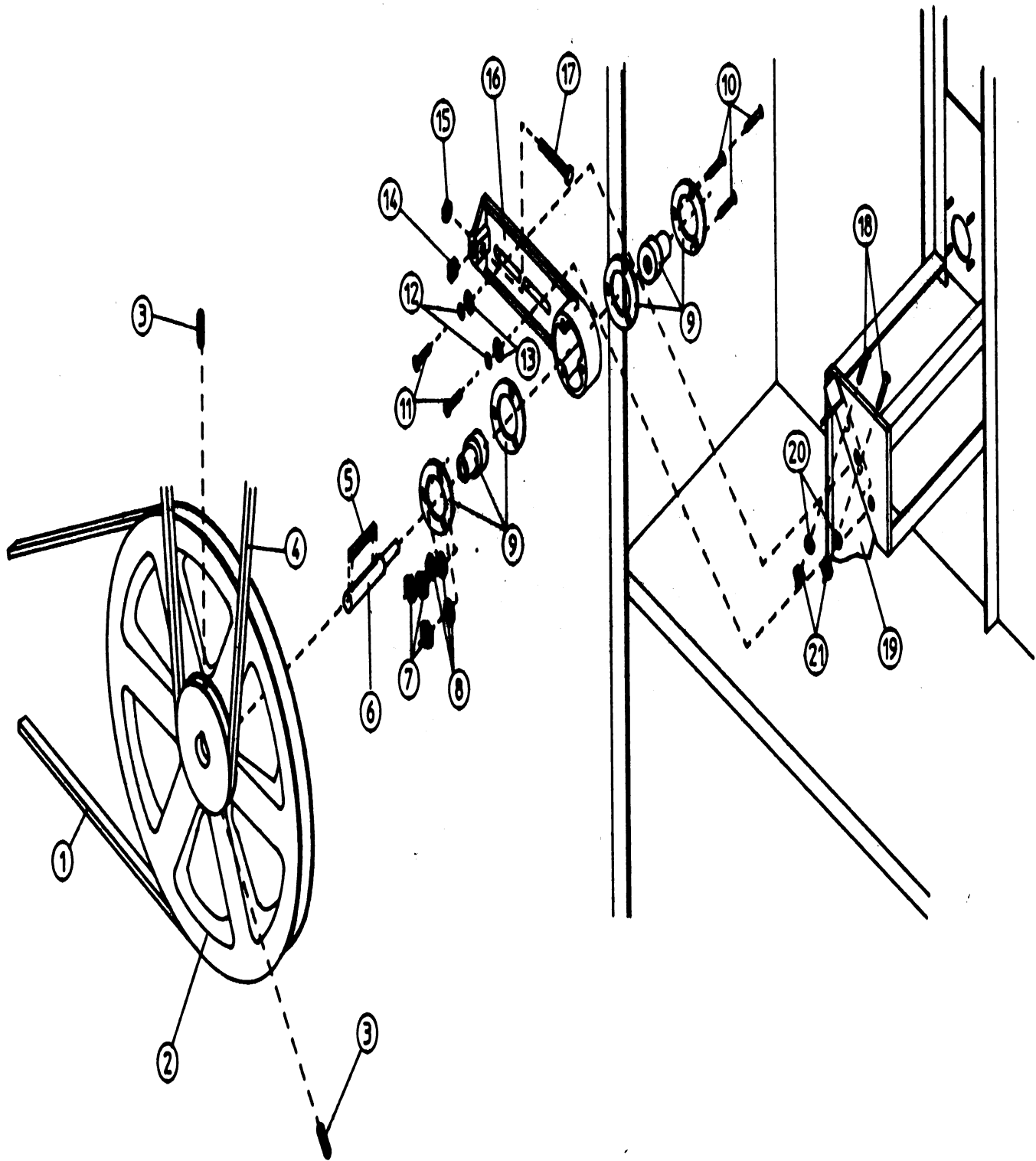
Section: TUMBLER - BEARING ASSEMBLY

No.	Part No.	Description	Series	Qty
0	-----	NOT REQUIRED PART OR SEE NOTE Note: ORDER PART FROM AMERICAN DRYER CORP AT 508-678-9000		0
1	A100203	BEARING, FLANGE (1 3/8")		1
2	A153005	WASHER, LOCK (3/8") Note: WASHER, LOCK (3/8")		4
3	A152005	NUT, HEX (#16-3/8") Note: NUT, HEX (#16-3/8")		4
4	A150508	BOLT, MACHINE (#16-3/8 X 3/4) Note: BOLT, MACHINE (#16-3/8 X 3/4)		2
5	A153005	WASHER, LOCK (3/8") Note: WASHER, LOCK (3/8")		2
6	A152005	NUT, HEX (#16-3/8") Note: NUT, HEX (#16-3/8")		2
7	A150600	BOLT, MACHINE (#16-3/8 X 11/2) Note: BOLT, MACHINE (#16-3/8 X 11/2)		2
8	A153004	WASHER, FLAT (3/8") Note: WASHER, FLAT (3/8")		2
9	A153005	WASHER, LOCK (3/8") Note: WASHER, LOCK (3/8")		2
10	A152005	NUT, HEX (#16-3/8") Note: NUT, HEX (#16-3/8")		2
11	A150501	BOLT, MACHINE (#18-5/16 X 3/4) Note: BOLT, MACHINE (#18-5/16 X 3/4)		4
12	A153002	WASHER, LOCK (5/16") Note: WASHER, LOCK (5/16")		4
13	A153001	WASHER, FLAT (5/16") Note: WASHER, FLAT (5/16")		4
14	A150621	BOLT, MACHINE (#18-5/16X1 1/2) Note: BOLT, MACHINE (#18-5/16X1 1/2)		2
15	A152004	NUT, HEX (#18-5/16) Note: NUT, HEX (#18-5/16")		2
16	A801101	BEARING, BOX ASSY (1 3/8") Note: BEARING, BOX ASSY. (1 3/8")		1
16	A801103	BEARING BOX & SUPPORT (1 3/8") Note: BEARING BOX & SUPPORT (1 3/8")		1
16	A801105	BEARING BOX (1 3/8") Note: BEARING BOX (1 3/8")		1
17	A801104	SUPPORT, PILLOW BLOCK BEARING Note: SUPPORT, PILLOW BLOCK BEARING		1
18	A100202	BEARING, PILLOW BLOCK Note: BEARING, PILLOW BLOCK		1
19	A152005	NUT, HEX (#16-3/8") Note: NUT, HEX (#16-3/8")		2
20	A154303	SCREW (#16-3/8" X 1 1/4") Note: SCREW (#16-3/8" X 1 1/4")		2
21	A101100	PULLEY (18")		1
22	A154301	SCREW, ALLEN (#18-5/16 X 5/16) Note: SCREW (#18-5/16 X 5/16)		2
23	A100713	KEY (1/4" X 1/4" X 7/8")		1
24	A100100	V-BELT		1

*Color Code (-)=Not Shown #=Series, Serial Prefix or Run No., N=Not Available

Section: IDLER BEARING ASSEMBLY

Model: MDG32PC3AW



MAN0358

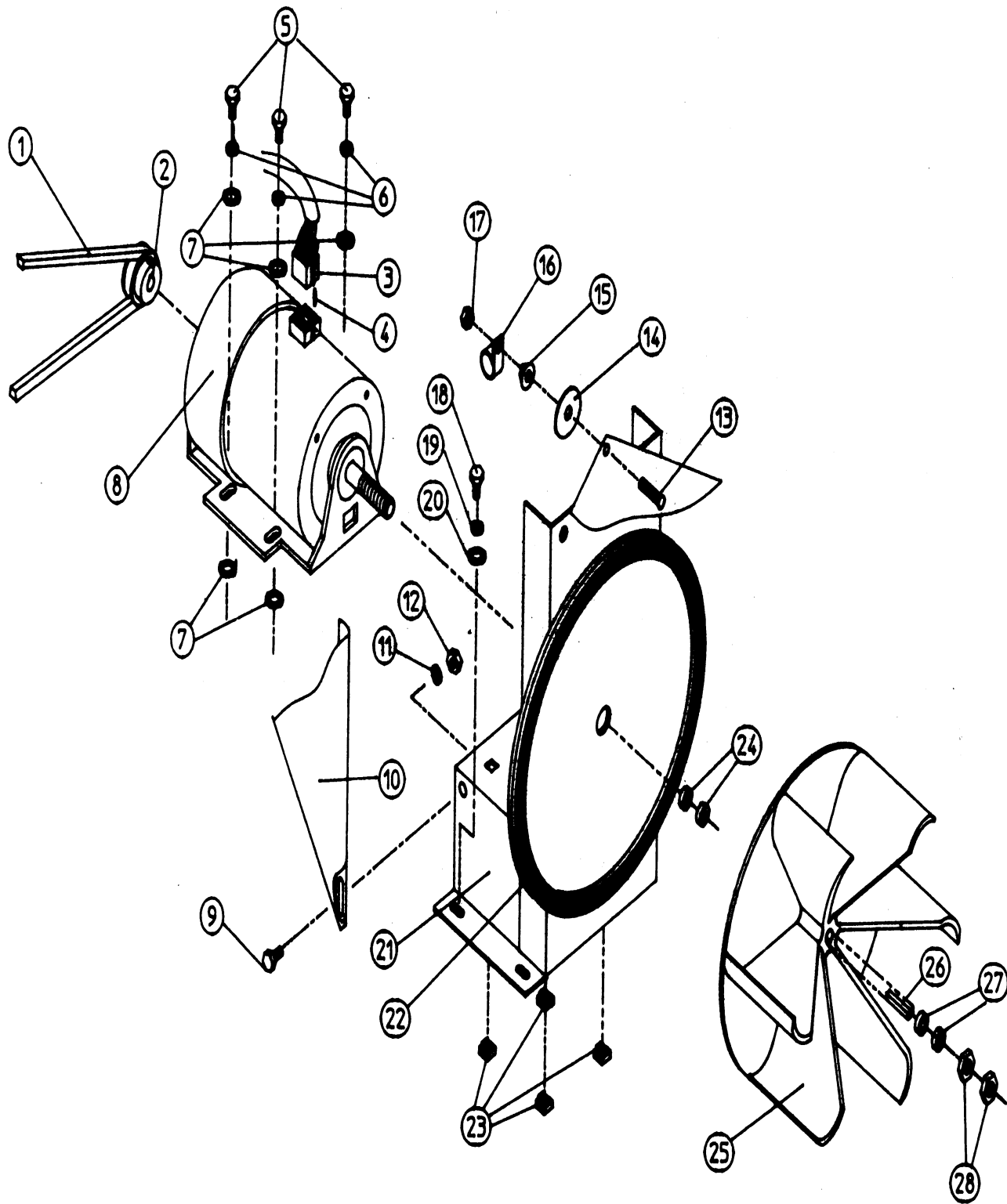
Section: IDLER BEARING ASSEMBLY

No.	Part No.	Description	Series Qty
0	-----	NOT REQUIRED PART OR SEE NOTE Note: ORDER PARTS FROM AMERICAN DRYER CORP AT 508-678-9000	0
1	A100144	V-BELT	1
2	A101129	PULLEY W/KEY(9" X 2 1/2")	1
3	A154301	SCREW, ALLEN (#18-5/16 X 5/16) Note: SCREW (#18-5/16 X 5/16")	1
4	A100100	V-BELT	2
5	A100705	KEY (3/16" X 3/16" X 1-3/8")	1
6	A301850	SHAFT, IDLER (5/8" X 3/4") Note: SHAFT, IDLER (5/8" X 3/4")	1
7	A152002	HEX NUT (#20-1/4") Note: NUT, HEX (#20-1/4")	3
8	A153007	WASHER, LOCK (1/4") Note: WASHER, LOCK (1/4")	3
9	A100214	BEARING, FLANGE (5/8") Note: BEARING, FLANGE (5/8")	2
10	A150521	BOLT, CARRIAGE (#20-1/4 X 2") Note: BOLT, CARRIAGE (#20-1/4 X 2")	3
11	A150617	BOLT, MACHINE (#16-3/8 X 1") Note: BOLT, MACHINE (#16-3/8 X 1")	2
12	A153005	WASHER, LOCK (3/8") Note: WASHER, LOCK (3/8")	2
13	A153004	WASHER, FLAT (3/8") Note: WASHER, FLAT (3/8")	2
14	A152020	NUT, STANDARD (#18-5/16")	1
15	A152004	NUT, HEX (#18-5/16) Note: NUT, HEX (#18-5/16")	1
16	A100406	BEARING, IDLER ASSEMBLY Note: (INCLUDES 5 - 17)	1
16 N	A801010	MOUNT, IDLER BEARING	1
17	A150509	BOLT, MACHINE (5/16-18 X 3") Note: BOLT, MACHINE (5/16-18 X 3")	1
18	A150111	SCREW, MACHINE (#20-1/4 X 1/2)	2
19	A311403	BRACKET, IDLER SUPPORT	1
20	A153007	WASHER, LOCK (1/4") Note: WASHER, LOCK (1/4")	2
21	A152002	HEX NUT (#20-1/4") Note: NUT, HEX (1/4")	2

*Color Code (-)=Not Shown #=Series, Serial Prefix or Run No., N=Not Available

Section: MOTOR & MOUNT ASSEMBLY

Model: MDG32PC3AW



MAN0356

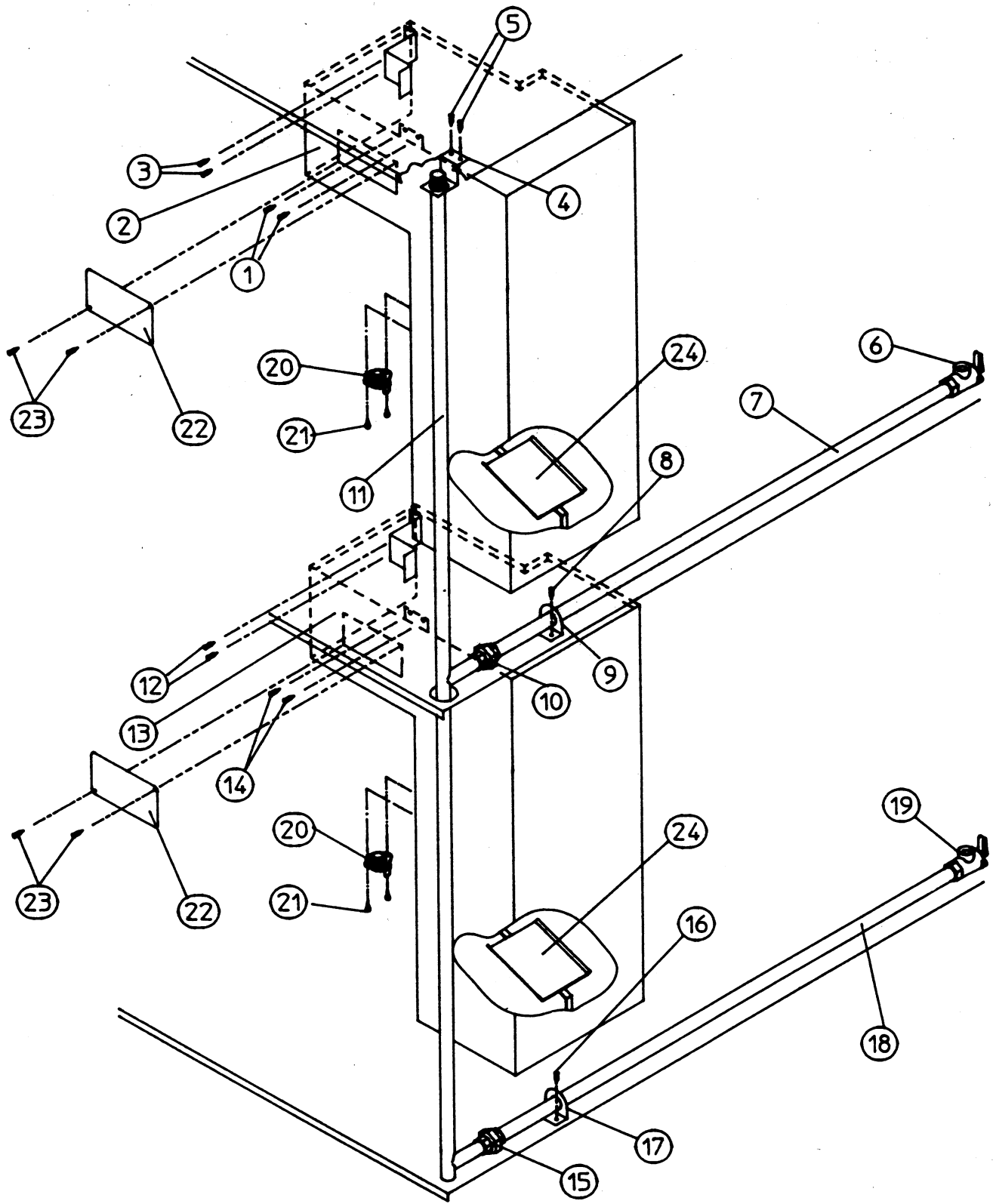
Section: MOTOR & MOUNT ASSEMBLY

No.	Part No.	Description	Series	Qty
0	-----	NOT REQUIRED PART OR SEE NOTE Note: ORDER PARTS FROM AMERICAN DRYER COPR. AT 508-678-9000		0
1	A100144	V-BELT		1
2	A101131	PULLEY, MOTOR (60HZ)		1
3	A137030	HOUSING (8 PIN) Note: HOUSING (8 PIN)		1
4	A122701	TERMINAL, SOCKET (ONLY) Note: SOCKET, TERMINAL		6
4	A122801	TOOL, EXTRACTION (PIN/SOCKET) Note: TOOL, EXTRACTION (PIN/SOCKET)		1
5	A150501	BOLT, MACHINE (#18-5/16 X 3/4) Note: BOLT, MACHINE (#8-5/16 X 3/4")		4
6	A153002	WASHER, LOCK (5/16") Note: WASHER, LOCK (5/16")		4
7	A153001	WASHER, FLAT (5/16") Note: WASHER, FLAT (5/16")		8
8	A100065	MOTOR W/PLUG Note: (1/2 HP 100-230V. 60HZ, 10 T.E.F.C.)		1
9	A150111	SCREW, MACHINE (#20-1/4 X 1/2)		1
10	A311403	BRACKET, IDLER SUPPORT Note: (TO IDLER BEARING ASSY.)		1
11	A153007	WASHER, LOCK (1/4") Note: WASHER, LOCK (1/4")		1
12	A152002	HEX NUT (#20-1/4") Note: NUT, HEX (#20-1/4")		1
13	A153525	STUD, SELF CLINCHING		1
14	A153003	WASHER (3/8" X 1 1/2")		1
15	A152014	NUT, FREE SPIN WASH (#20-1/4) Note: NUT, FREE SPIN WASHER		1
16	A121490	CLAMP, NYLON (1/2")		1
17	A152002	HEX NUT (#20-1/4") Note: NUT, HEX (#20-1/4)		1
18	A150501	BOLT, MACHINE (#18-5/16 X 3/4) Note: BOLT, MACHINE (#18-5/16 X 3/4)		4
19	A153002	WASHER, LOCK (5/16") Note: WASHER, LOCK (5/16")		4
20	A153001	WASHER, FLAT (5/16") Note: WASHER, FLAT (5/16")		1
21	A850019	MOTOR MOUNT ASSY. Note: (1/2 HP 100-130V 60HZ 10 T.E.F.C.)		1
21	A803969	MOUNT, 1/2 HP MOTOR		1
22	A117600	GASKET, TAPE (SOLD IN FEET) Note: TAPE, NOISE SUPPRESSOR (SOLD IN FEET)		4
23	A154000	NUT (#18-5/16") Note: NUT (#18-5/16")		4
25	A100604	IMPELLOR (12 1/2" W/ 1/2 BORE) Note: IMPELLOR (12 1/2" W/ 1/2 BORE)		1
26	A100702	KEY (1/8" X 1/8" X 1 1/2")		1
28	A152006	NUT, JAM (#20-1/2" LT-HAND) Note: NUT, JAM (#20-1/2" LT-HAND)		2

*Color Code (-)=Not Shown #=Series, Serial Prefix or Run No., N=Not Available

Section: BURNER BOX/PIPING ASSEMBLIES

Model: MDG32PC3AW



MAN0825

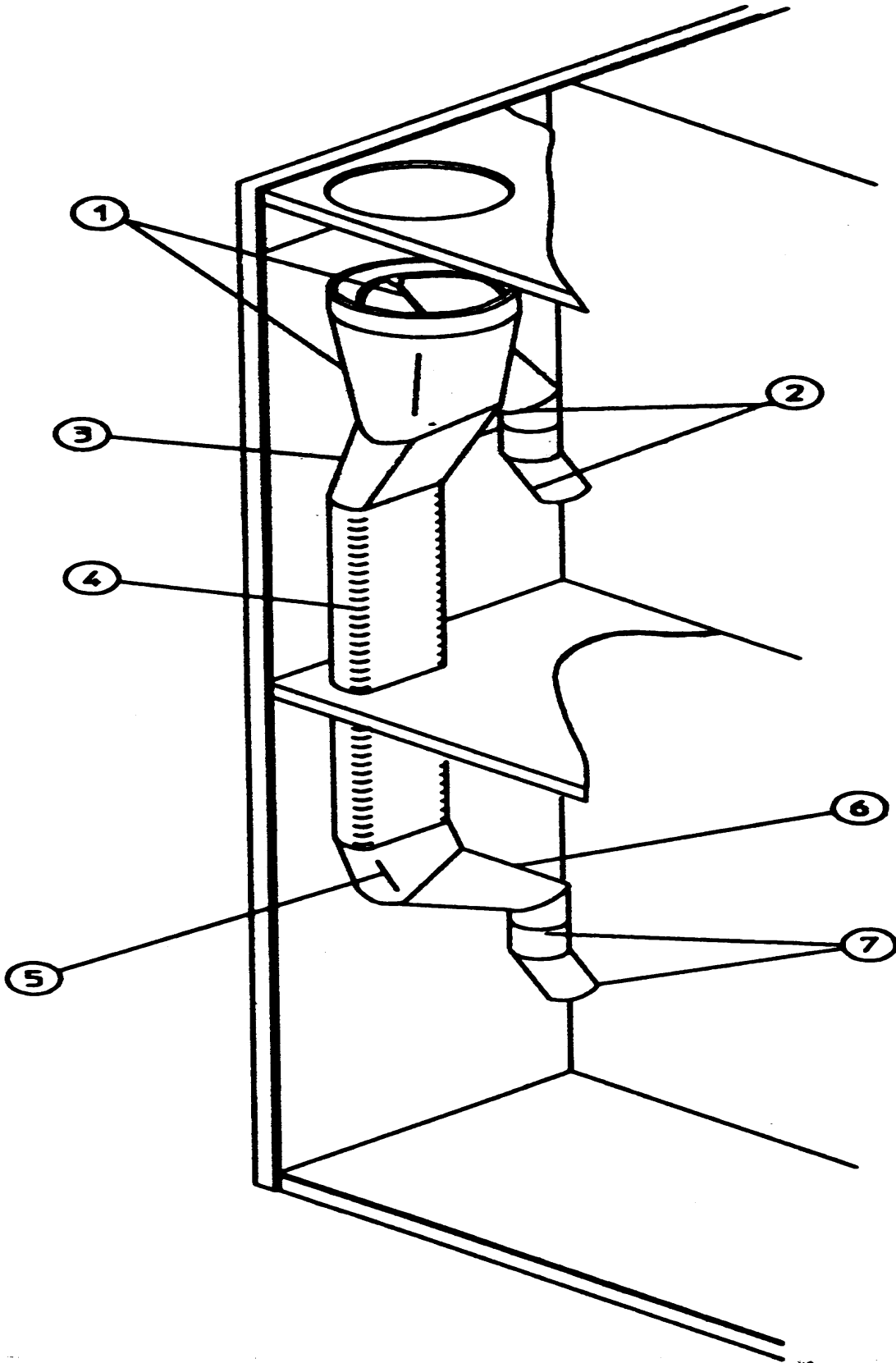
Section: BURNER BOX/PIPING ASSEMBLIES

No.	Part No.	Description	Series	Qty
0	-----	NOT REQUIRED PART OR SEE NOTE Note: ORDER PARTS AT AMERICAN DRYER CORP AT 508-678-9000		0
1	A150301	SCREW, TEK (#8-18 X 7/16 PH Note: SCREW, TEK (#8-18 X 7/16"))		2
2	A880121	BURNER BOX W/SPREADER ASSY.		1
3	A150301	SCREW, TEK (#8-18 X 7/16 PH Note: SCREW, TEK (#8-18 X 7/16"))		2
4	A318702	BRACKET, TOP PIPE SUPPORT		1
5	A150300	SCREW (#10-32 X 1/2" PH ROUND		2
6	A141305	SHUT-OFF, UNION Note: SHUT-OFF, UNION		2
7	A142823	PIPE (1/2" X 40")		1
8	A150300	SCREW (#10-32 X 1/2" PH ROUND		2
9	A318700	BRACKET, PIPE (BENT) Note: BRACKET, PIPE		1
10	A142600	UNION (1/2")		1
11	A141237	MANIFOLD, INLET		1
12	A150301	SCREW, TEK (#8-18 X 7/16 PH Note: SCREW, TEK (#8-18 X 7/16"))		2
13	A880121	BURNER BOX W/SPREADER ASSY.		1
14	A150301	SCREW, TEK (#8-18 X 7/16 PH Note: SCREW, TEK (#8-18 X 7/16"))		2
15	A142600	UNION (1/2")		1
16	A150300	SCREW (#10-32 X 1/2" PH ROUND		2
17	A318700	BRACKET, PIPE (BENT) Note: BRACKET, PIPE		1
18	A142823	PIPE (1/2" X 40")		1
19	A141305	SHUT-OFF, UNION Note: BODY, UNION SHUT-OFF		1
20	A130401	HI-LIMIT (330 DEG.) Note: HI-LIMIT (330 DEG.)		2
21	A150300	SCREW (#10-32 X 1/2" PH ROUND		4
22	A318065	COVER, BURNER BOX		2
23	A150300	SCREW (#10-32 X 1/2" PH ROUND		4
24	A850912	SPREADER ASSY.		2

*Color Code (-)=Not Shown #=Series, Serial Prefix or Run No., N=Not Available

Section: EXHAUST DUCTING ASSEMBLY

Model: MDG32PC3AW



MA303C13

Section: EXHAUST DUCTING ASSEMBLY

No.	Part No.	Description	Series Qty
0	-----	NOT REQUIRED PART OR SEE NOTE Note: ORDER PARTS FROM AMERICAN DRYER CORP AT 508-678-9000	0
1	A143535	WYE BRANCH	1
2	A143536	ELBOW (6" ROUND X 45 DEG.) Note: ELBOW (6" ROUND X 45 DEG.)	2
3	A145327	BOOT, STRAIGHT (6" RD X 7" OV)	1
4	A143539	DUCT (15 1/2" LONG X 7" OVAL)	1
5	A143537	ELBOW (7" OVAL X 45 DEG.)	1
6	A143538	BOOT, STRAIGHT (6" RD X 7 OV)	1
7	A143536	ELBOW (6" ROUND X 45 DEG.) Note: ELBOW (6" ROUND X 45 DEG.)	2
-	A117505	TAPE, ALUMINUM DUCT	6

*Color Code (-)=Not Shown #=Series, Serial Prefix or Run No., N=Not Available

