

WASHER

Repair Parts List

MODEL NUMBER

MFS90PNAVS

BDSPARTS.COM

When requesting service or ordering parts, always provide the following information:

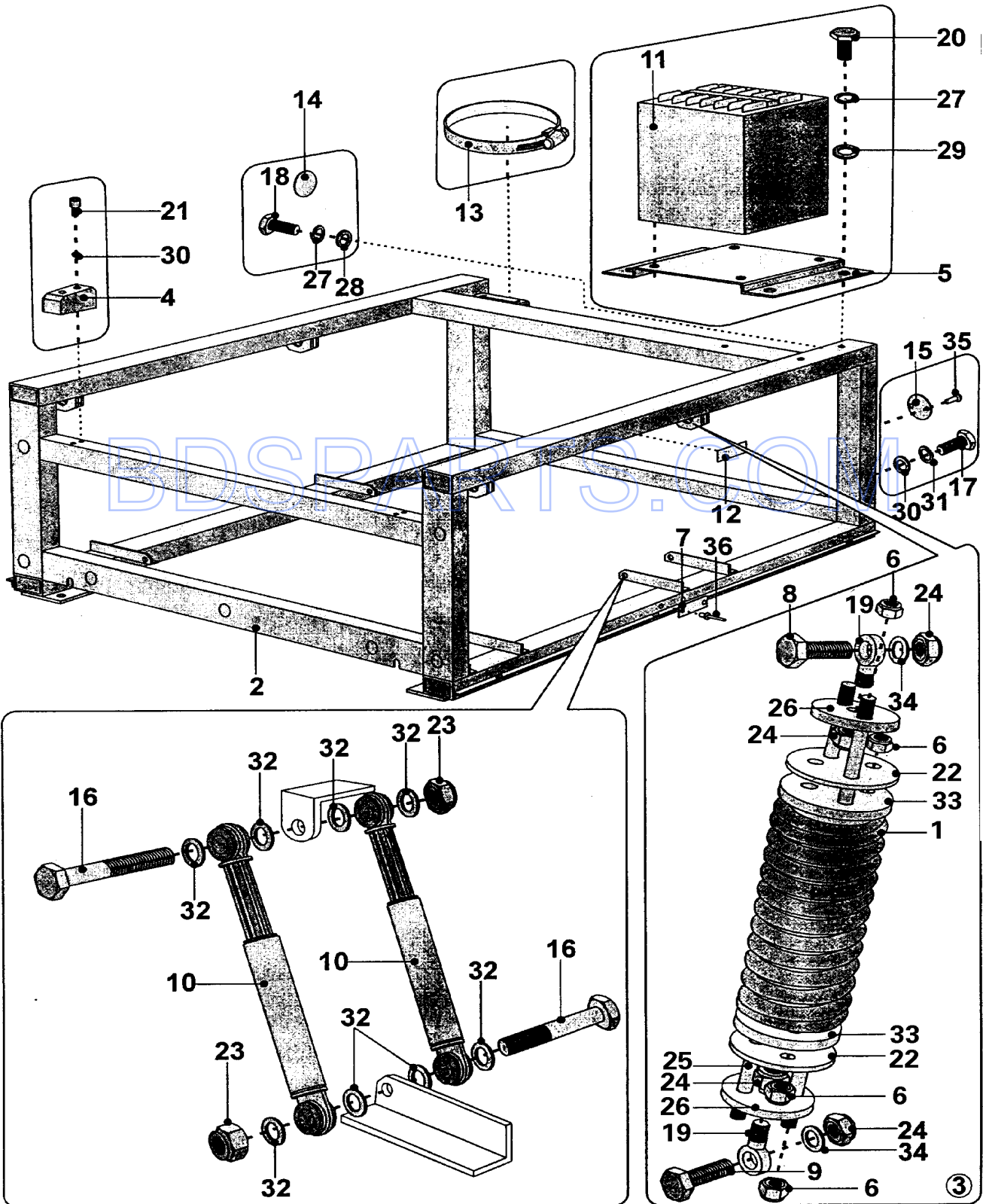
- Product Type
- Part Number
- Model Number
- Part Description

MAYTAG®

©2005 Maytag Services

Section: FRAME

Model: MFS90PNAVS



CW21-89

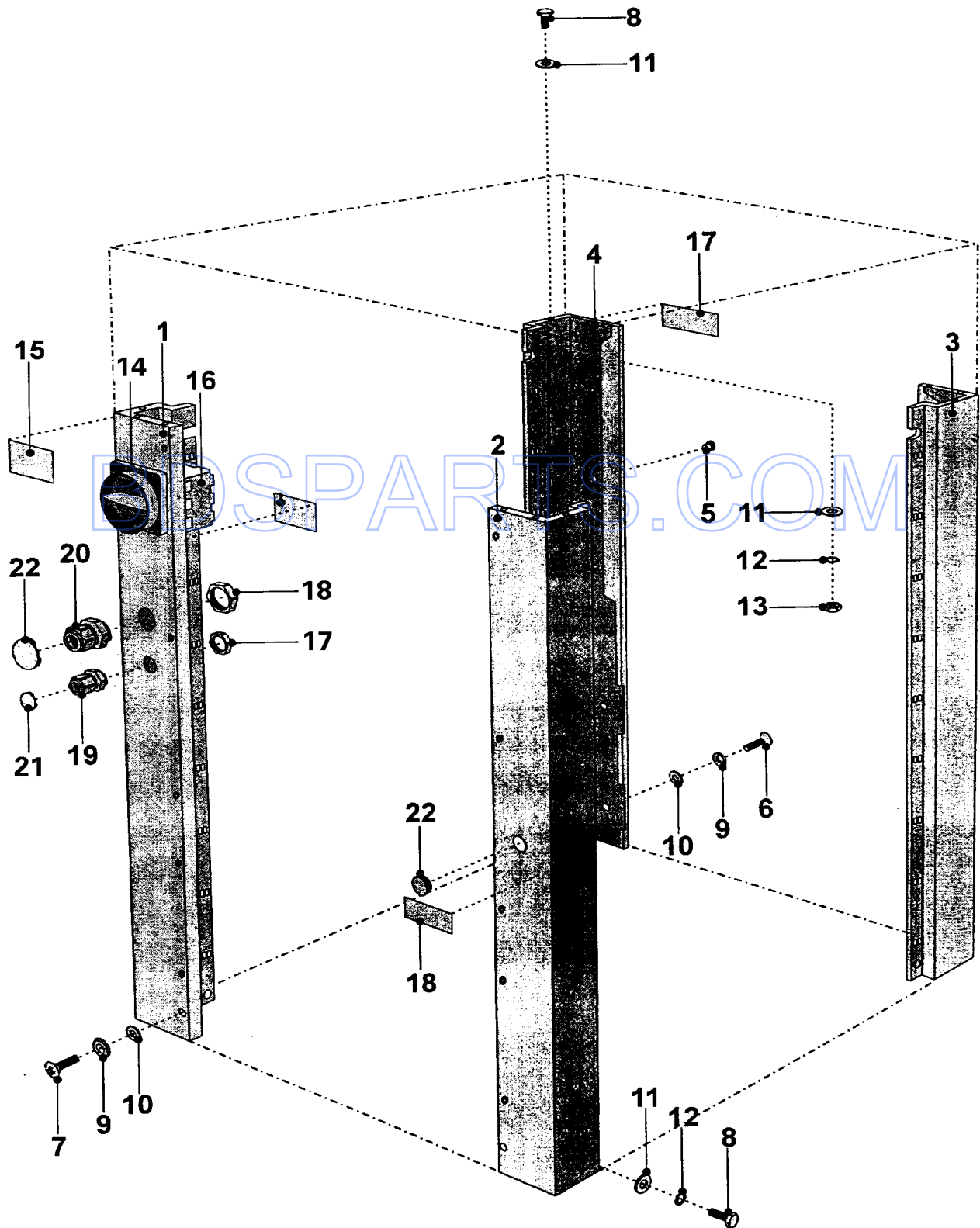
Section: FRAME

No.	Part No.	Description	Series	Qty
1	23002367	SPRING	10	4
2	23002339	FRAME	10	1
3	23002341	SPRING HINGE ASSY.	10	4
4	23002342	BLOCK	10	2
5	23002343	HOLDER, TRANSFORMER	10	1
6	23002356	NUT (M10)	10	16
7	N 23002344	PLATE, SMALL	10	2
8	N 23003177	SCREW Note: SCREW (1)	10	6
9	N 23002345	SCREW Note: SCREW (2)	10	2
10	23002347	DAMPER	10	12
11	23002348	TRANSFORMER, CONTROL CIRCUIT	10	1
11	23002349	TRANSFORMER (440V)	10	1
11	23003704	TRANSFORMER (250 VA) Note: USE ON MODEL MFS125PAVS	17	1
11	23002142	TRANSFORMER Note: TRANSFORMER (230-240V)	10	1
12	23001567	SHEET, ANTI-VIBRATION	10	2
13	23001750	RING, CLAMP (40-60)	10	2
14	N 23001546	LABEL, EARTH	10	1
15	N 23002350	PLATE, INDEX	10	1
16	23002351	SCREW (M10X80)	10	12
17	N 23002352	SCREW (M8X15)	10	1
18	23002353	SCREW (M6X12)	10	12
19	23002368	SCREW, EYE	10	8
20	23002354	SCREW (M6X16)	10	7
21	N 23002355	SCREW (M8X30)	10	4
22	23002366	PACKING PIECE	10	8
23	23002356	NUT (M10)	10	12
24	23001651	NUT (M16)	10	8
25	N 23002365	DRAWING ROD	10	16
26	23002364	DISK	10	8
27	23002357	WASHER	10	8
28	23001643	WASHER (M6)	10	1
29	23002282	WASHER (6)	10	7
30	23002358	WASHER (M8)	10	5
31	23002359	WASHER (M6)	10	1
32	23002655	WASHER (10/5)	10	72
33	23002363	SLEEVE	10	8
34	23001735	WASHER (M17)	10	8
35	23001777	SCREW, DRIVE (2X4)	10	2
36	23002362	RIVET W/CRANK	10	4
37	23002363	SLEEVE	10	8

*Color Code (-)=Not Shown #=Series, Serial Prefix or Run No., N=Not Available

Section: CABINET

Model: MFS90PNAVS



CW12-26

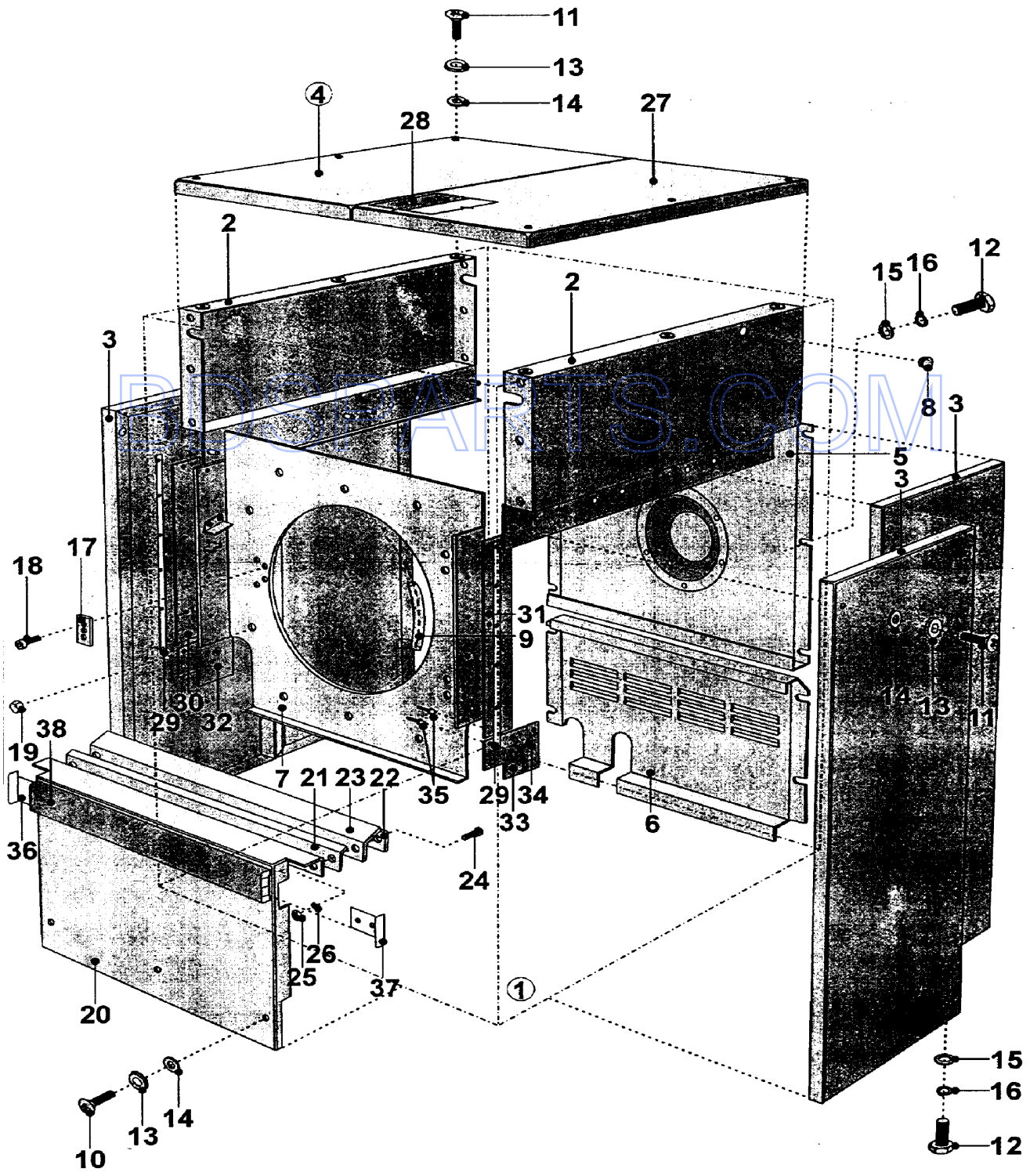
Section: CABINET

No.	Part No.	Description	Series	Qty
1	23002369	COVER, RIGHT-REAR	10	1
2	23002370	COVER, LEFT-REAR	10	1
3	23002371	COVER, LEFT-FRONT	10	1
4	23002372	COVER, RIGHT-FRONT	10	1
5	23002373	END STOP	10	2
6	23002374	SCREW (M6X20)	10	7
7	23002375	SCREW (M6X40)	10	16
8 N	23002376	SCREW (M6X18)	10	30
9	23001337	WASHER, FINISHING	10	23
10	23001338	WASHER, FIBER (DIA. 15X7X3)	10	23
11	23002282	WASHER (6)	10	36
12	23002138	WASHER (10)	10	24
13	23002361	NUT (M6)	10	8
14	23002141	KNOB	10	1
15 N	23001745	LABEL (WARNING)	10	1
16	23001731	SWITCH, MAIN (63A)	10	1
16	23002915	SWITCH, MAIN (32A)	10	1
17	23002197	NUT	10	1
18 N	23002379	NUT	10	1
19	23002196	SWIVEL, CABLE	10	1
20 N	23002378	SWIVEL, CABLE	10	1
21	23002243	PLUG, UNIVERSAL	10	1
22 N	23002150	BLIND, UNIVERSAL	10	1
23	23002141	KNOB	10	1

*Color Code (-)=Not Shown #=Series, Serial Prefix or Run No., N=Not Available

Section: PANELS

Model: MFS90PNAVS



CW21-90

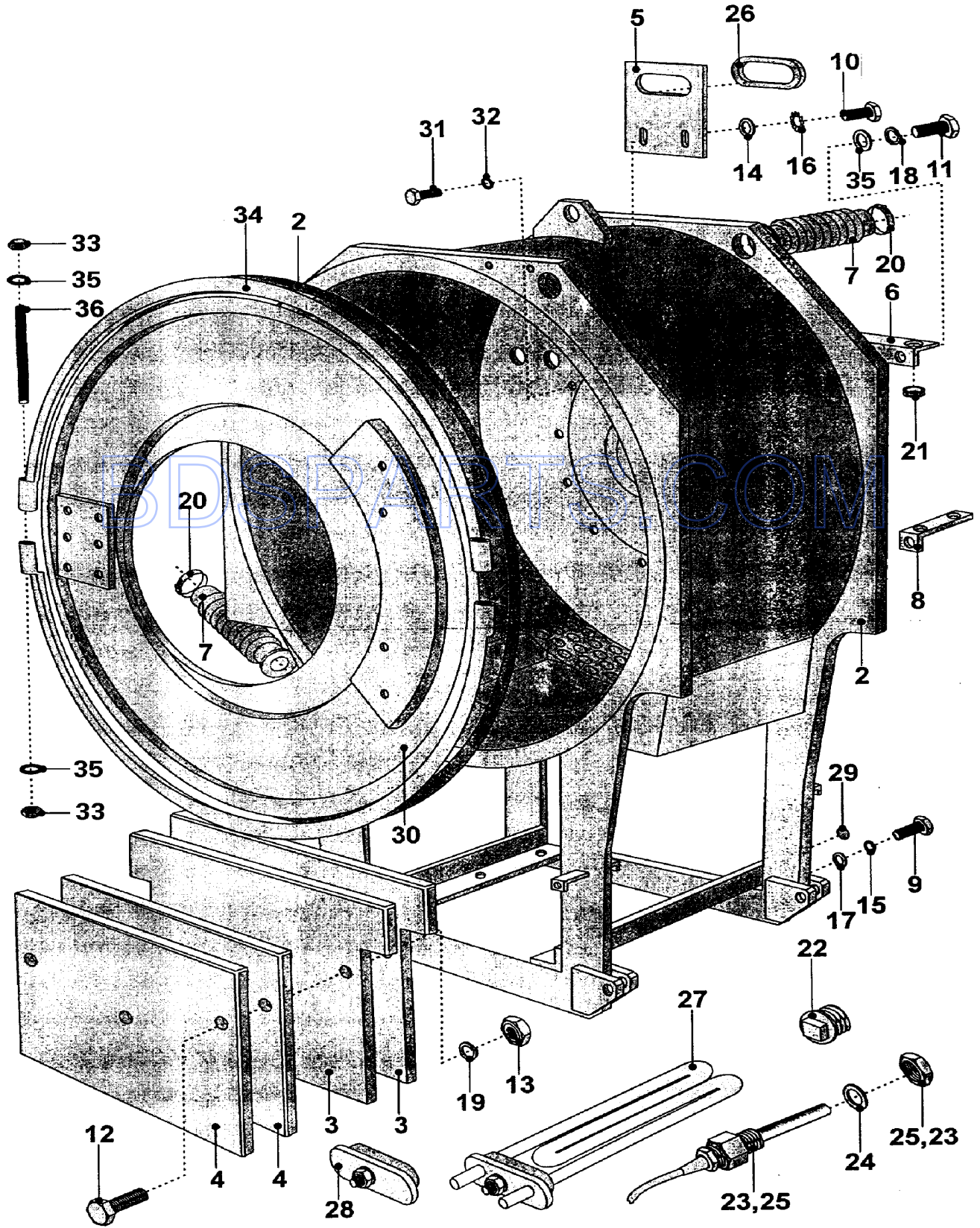
Section: PANELS

No.	Part No.	Description	Series	Qty
1	23002380	COVER, FRONT	10	1
2	23002381	COVER, SIDE-UPPER	10	2
3	23002383	COVER, SIDE-LOWER	10	4
4	23002385	COVER, TOP	10	1
5	23002387	COVER, REAR-UPPER	10	1
6	23002388	COVER, REAR-LOWER	10	1
7	23002397	FOIL	10	1
8	23001476	PLUG, WATER INLET	10	1
9	23001088	RUBBER TRIM	10	1
10	23002374	SCREW (M6X20)	10	7
11	23002375	SCREW (M6X40)	10	16
12	23001618	SCREW (M6X18)	10	30
13	23001337	WASHER, FINISHING Note: WASHER (M6)	10	23
14	23001338	WASHER, FIBER (DIA. 15X7X3)	10	23
15	N 23002389	WASHER Note: WASHER (6.4)	10	30
16	23002130	WASHER (6)	10	30
17	23002390	BLOCK	10	1
18	N 23002391	SCREW (M8X15)	10	2
19	N 23002392	NUT (M6)	10	8
20	23002393	COVER, FRONT-LOWER	10	1
21	23002394	SUPPORT, SIDE PANEL	10	1
22	23002395	RIBBON	10	1
23	23002396	STRIP	10	1
24	23002398	SCREW (M4X16)	10	7
25	23002399	NUT(M4)	10	7
26	23002400	WASHER Note: WASHER (4)	10	7
27	23002401	COVER, TOP	10	1
28	23002362	RIVET W/CRANK Note: RIVET W/CRANK (4X7)	10	11
29	N 23002402	BAR	10	2
30	N 23002403	CUFF (LT)	10	1
31	N 23002404	CUFF (RT)	10	1
32	N 23002405	CORNER CUFF (LT)	10	1
33	N 23002406	CORNER CUFF (RT)	10	1
34	N 23002407	WASHER	10	14
35	23002408	RIVET W/CRANK Note: RIVET W/CRANK (4X12.5)	10	26
36	23002409	BAR, INSIDE	10	1
37	23002410	BAR, SIDE	10	2
38	23002411	PROFILE	10	1

*Color Code (-)=Not Shown #=Series, Serial Prefix or Run No., N=Not Available

Section: TUB

Model: MFS90PNAVS



CW17-10

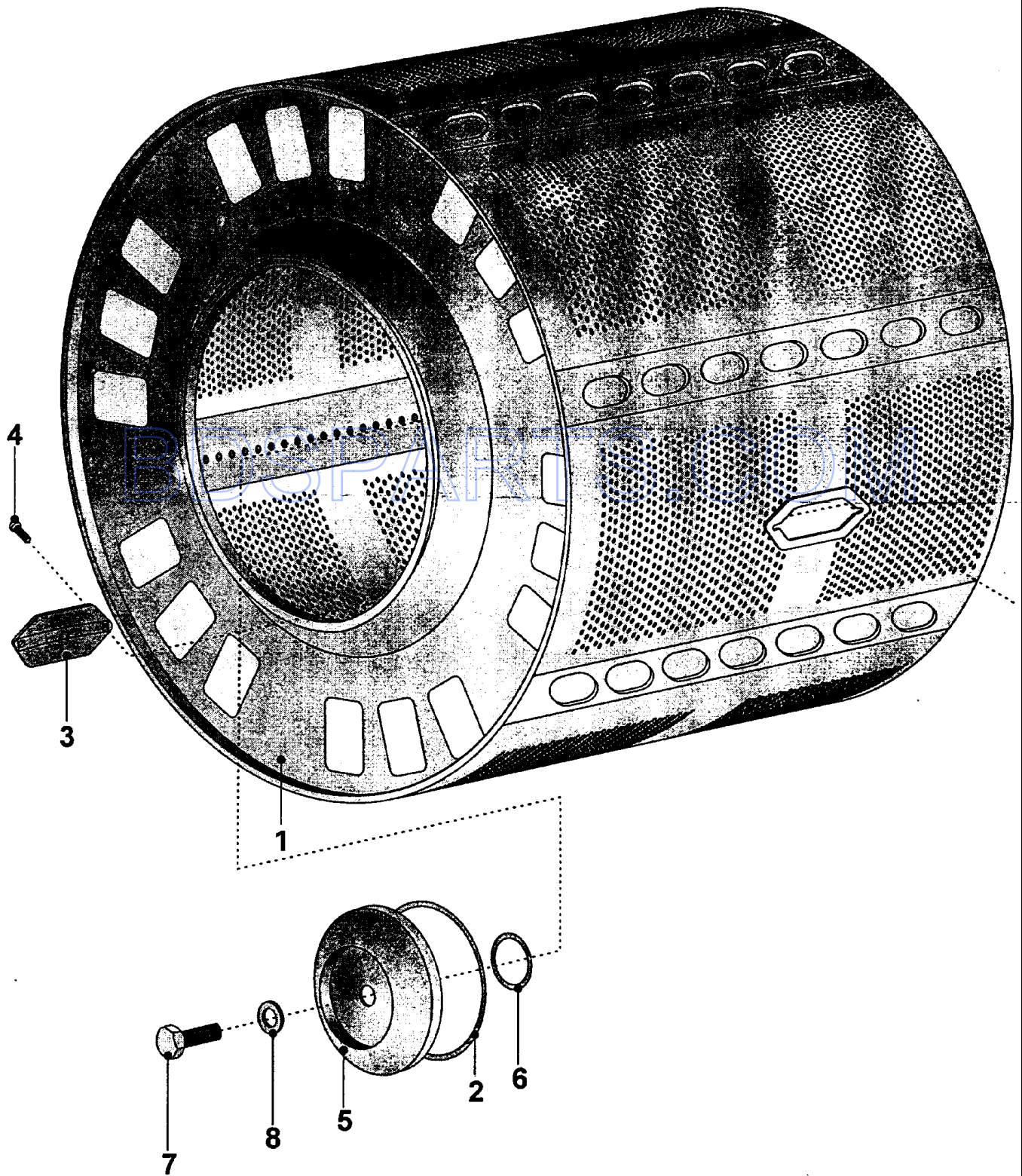
Section: TUB

No.	Part No.	Description	Series	Qty
1	23002412	TUB 100LB	10	1
2	23002485	SEALING	10	1
3	23002414	WEIGHT (LARGE)	10	2
4	23002415	WEIGHT (SMALL)	10	2
5	23002416	LIMITER	10	1
6	23002417	HOLDER	10	1
7	23002474	HOSE, RUBBER	10	2
8	23002418	HOLDER, WIRE	10	1
9	23002353	SCREW (M6X12)	10	12
10	23002354	SCREW (M6X16)	10	2
11	23002475	BOLT (M8X20)	10	2
12	23002476	SCREW (M20X150)	10	3
13	23002477	NUT (M20)	10	3
14	23002282	WASHER (6)	10	2
15	N 23002389	WASHER Note: WASHER (6.4)	10	12
16	23002357	WASHER Note: WASHER (6)	10	2
17	23002130	WASHER (6)	10	12
18	23002358	WASHER (M8) Note: WASHER (8)	10	2
19	23002478	WASHER Note: WASHER (M20)	10	1
20	23001256	CLAMP, HOSE (60-80)	10	4
21	23002479	PASSAGE, CABLE	10	3
22	23002480	PLUG (3/4)	10	1
23	23002481	ADAPTER	10	1
24	23002179	WASHER	10	1
25	23001592	ADAPTOR	10	1
26	23001088	RUBBER TRIM	10	1
27	23002482	ELEMENT, HEAT 100-125LB	10	6
28	23001594	BLIND, HEATING ELEMENT	10	6
29	N 23001546	LABEL, EARTH	10	9
30	23002483	PANEL, FACIA	10	2
31	23002353	SCREW (M6X12)	10	12
32	23002281	WASHER (6-COPPER)	10	12
33	23002487	NUT (M8)	10	4
34	N 23002484	CLIP	10	2
35	23001608	WASHER (M8) LU	10	4
36	23002486	BOLT (M8)	10	2

*Color Code (-)=Not Shown #=Series, Serial Prefix or Run No., N=Not Available

Section: DRUM

Model: MFS90PNAVS



CW21-91

Section: DRUM

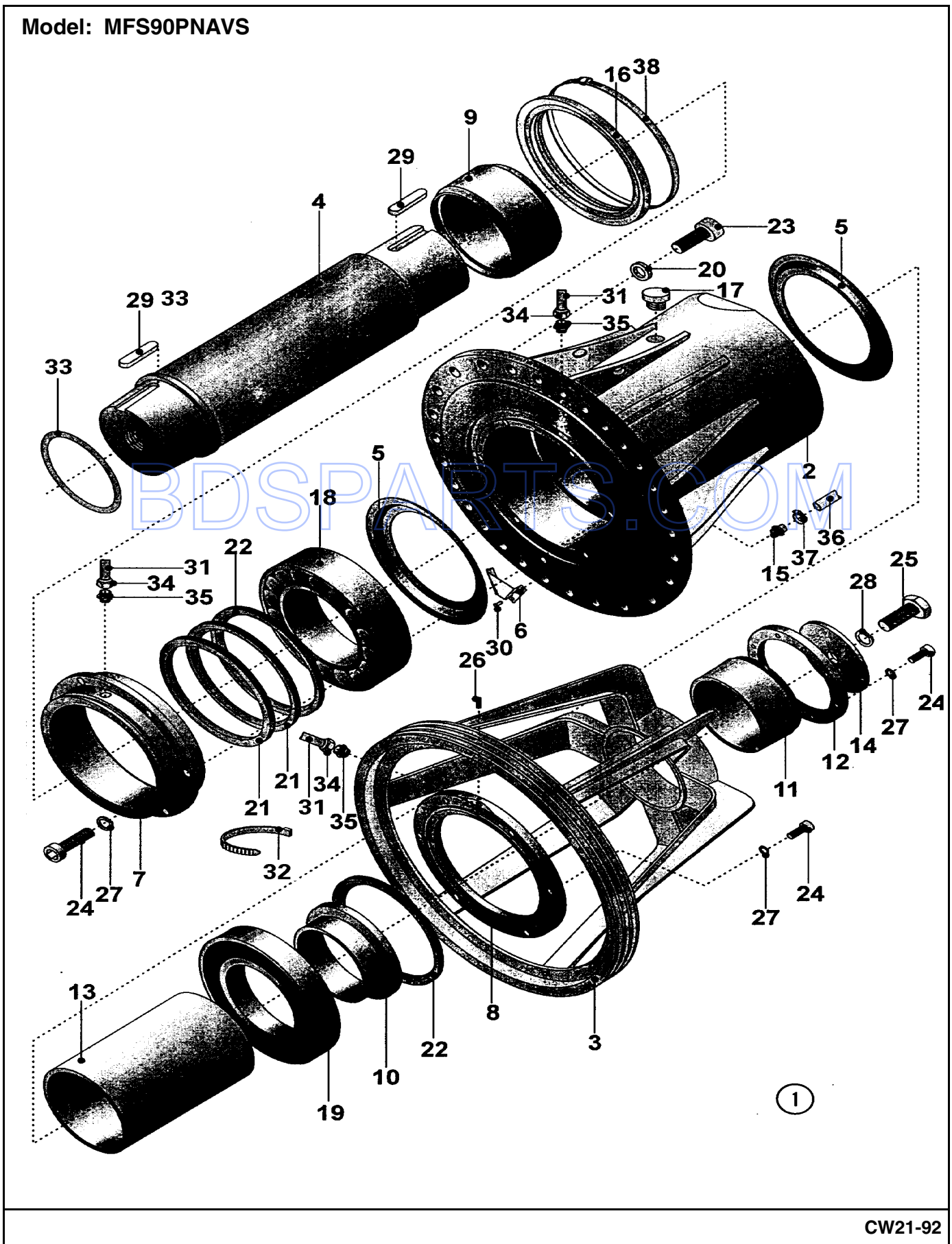
No.	Part No.	Description	Series	Qty
1	23002615	WASHING DRUM 100LB	10	1
2	23002622	O-RING	10	1
3	23002259	COVER	10	1
4	23002617	SCREW (M4X8)	10	2
5	23002618	WASHER	10	1
6	23002619	O-RING	10	1
7	23002620	Bolt, 30mmx80mm, SS	10	1
8	23002621	WASHER	10	1

BDSPARTS.COM

*Color Code (-)=Not Shown #=Series, Serial Prefix or Run No., N=Not Available

Section: TRUNNION

Model: MFS90PNAVS



CW21-92

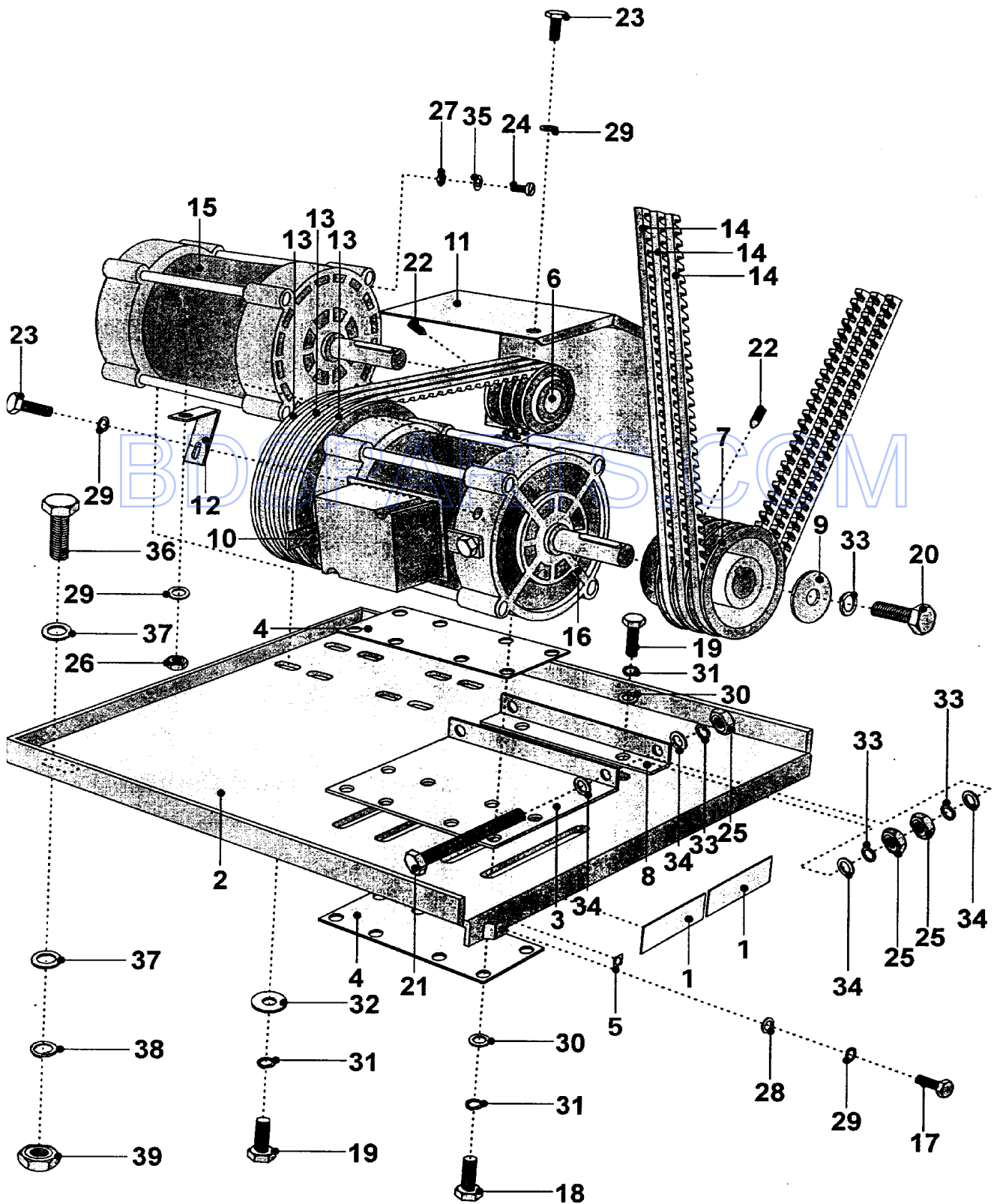
Section: TRUNNION

No.	Part No.	Description	Series	Qty
1	23003247	BEARING HOUSING, COMPLETE	10	1
2	23003248	HOUSING, BEARING	10	1
3	23003249	PULLEY	10	1
4	23003250	SHAFT	10	1
5	23002635	HOLDER, COVER	10	2
6 N	23003251	BOX	10	1
7	23003252	COVER, FRONT	10	1
8	23003253	COVER, REAR	10	1
9	23003254	BUSHING	10	1
10	23003255	BUSHING	10	1
11	23003256	SLEEVE, CLAMPING	10	1
12	23003257	NUT	10	1
13	23003258	TUBE, EXPANDING	10	1
14 N	23003259	WASHER, PULEY	10	1
15 N	23003260	SCREW, WING	10	1
16	23003215	BEARING, HOUSE SEALING	10	1
17	23003081	STOPPER	10	1
18	23003261	BEARING	10	1
19	23003262	BEARING	10	1
20	23003202	WASHER	10	24
21	23003263	SEAL	10	2
22	23003264	SEAL	10	2
23	23003207	SCREW (M20X65)	10	24
24	23003265	SCREW (M12X30)	10	20
25	23003266	SCREW (M20X60)	10	1
26	23003267	SCREW (M5X6)	10	1
27	23002658	WASHER (12)	10	20
28	23002478	WASHER	10	1
29	23003268	WEDGE	10	2
30	23002362	RIVET W/CRANK	10	4
31	23003213	HOSE	10	1
32	23001720	BINDER, CABLE	10	2
33	23002485	SEALING	10	1
34	23003269	NUT, TRANSFER	10	6
35	23003212	NECK, CONNECTING	10	6
36	23001741	HOSE (10X14.5)	10	1
37	23001506	CLAMP, HOSE	10	1
38	23003209	CLIP	10	1

*Color Code (-)=Not Shown #=Series, Serial Prefix or Run No., N=Not Available

Section: MOTOR DRIVE

Model: MFS90PNAVS



CW21-93

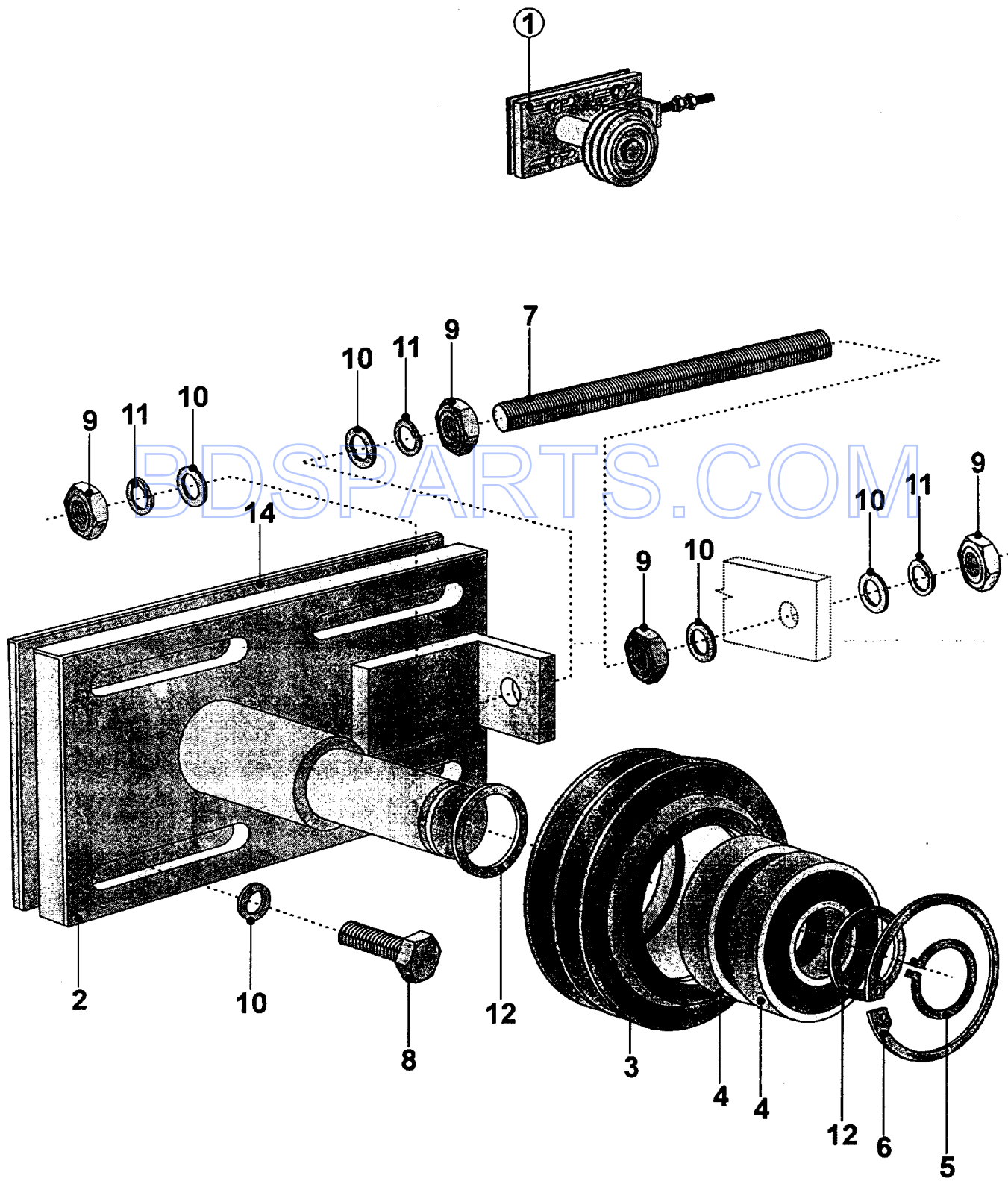
Section: MOTOR DRIVE

No.	Part No.	Description	Series	Qty
1	23002123	LABEL, MOTOR	10	2
2	23002623	BOARD, DRIVE	10	1
3	23002625	HOLDER, MOTOR	10	1
4	23002627	WASHER, MOTOR HOLDER	10	1
5 N	23001546	LABEL, EARTH	10	1
6	23002629	PULLEY, WASH MOTOR	10	1
7	23002631	PULLEY, SPIN MOTOR	10	1
8	23002632	BRACKET	10	1
9	23002633	WASHER	10	1
10	23002418	HOLDER, WIRE	10	1
11	23002634	COVER	10	1
12	23002635	HOLDER, COVER	10	1
13	23004520	BELT-MOTOR TO MOTOR	10	3
14	23004519	DRIVE BELT-BASKET	10	3
15	23002639	MOTOR (208-240V/60HZ)	10	1
16	23002643	MOTOR (208-240V/60HZ)	10	1
17 N	23002352	SCREW (M8X15)	10	1
18	23002646	SCREW (M8 X 40) Note: SCREW (M8X40)	10	8
19	23002647	SCREW (M8 X 25) Note: SCREW (M8X25)	10	8
20	23002648	SCREW (M10 X 20) Note: SCREW (M10X20)	10	4
21	23001660	SCREW (M10X120)	10	2
22	23001658	SCREW (M6X10)	10	4
23	23002649	SCREW (M6 X 10) Note: SCREW (M6X10)	10	1
24	23002650	SCREW (M6 X 12) Note: SCREW (M6X12)	10	4
25	23001661	NUT (M10)	10	6
26	23002651	NUT (M6)	10	5
27	23002652	NUT (QTY OF 4 = 1 PIECE)	10	4
28	23002129	WASHER (M4)	10	10
29	23002357	WASHER Note: WASHER (6)	10	10
30	23002653	WASHER (8/6) Note: WASHER (8.4)	10	8
31	23002358	WASHER (M8) Note: WASHER (8)	10	8
32	23001263	WASHER (8.4)	10	16
33	23002654	WASHER (10)	10	12
34	23002655	WASHER (10/5) Note: WASHER (10.5)	10	12
35	23002656	WASHER (4/3) Note: WASHER (4.3)	10	4
36	23002661	SCREW (M12 X 35) Note: SCREW (M12X35)	10	6
37	23002657	WASHER (13)	10	6
38	23002658	WASHER (12)	10	6
39 N	23002659	NUT (M12)	10	2

*Color Code (-)=Not Shown #=Series, Serial Prefix or Run No., N=Not Available

Section: TENSIONING SYSTEM

Model: MFS90PNAVS



CW21-94

Section: TENSIONING SYSTEM

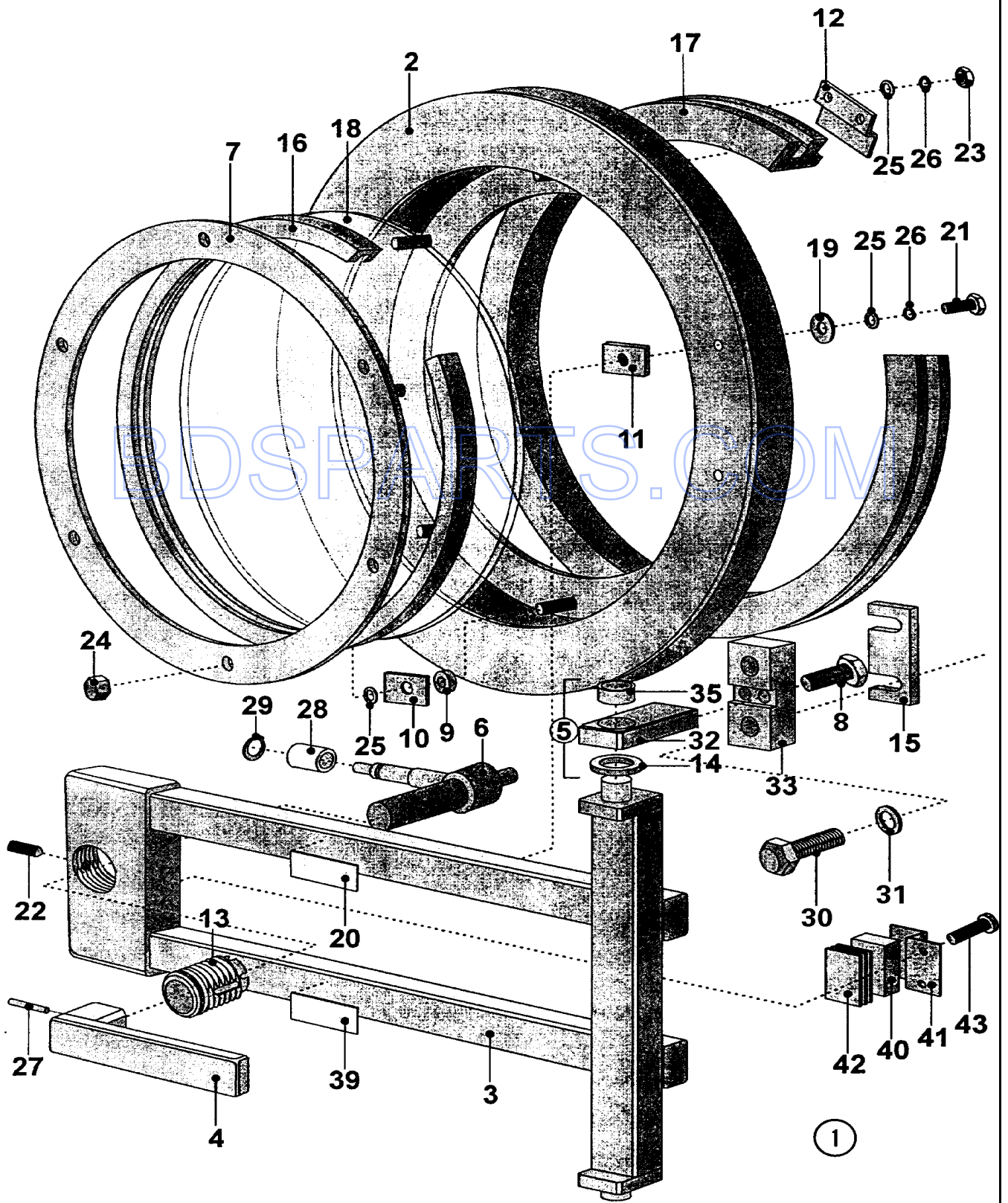
No.	Part No.	Description	Series	Qty
1	23002662	TENSION ROLLER ASSEMBLY	10	1
2	23002663	TENSION ROLLER	10	1
3	23002664	ROLLER	10	1
4	23002665	BEARING 6305-2RS1/C3	10	2
5	23002666	RING, RETAINING (25)	10	1
6	23002667	RING, RETAINING (62)	10	1
7	N 23002668	BOLT (M12)	10	1
8	N 23002669	SCREW (M12 X 30) Note: SCREW (M12X30)	10	4
9	N 23002659	NUT (M12)	10	4
10	23002657	WASHER (13)	10	8
11	23002658	WASHER (12)	10	4
12	23002670	WASHER	10	4

BDSPARTS.COM

*Color Code (-)=Not Shown #=Series, Serial Prefix or Run No., N=Not Available

Section: DOOR

Model: MFS90PNAVS



CW10-37

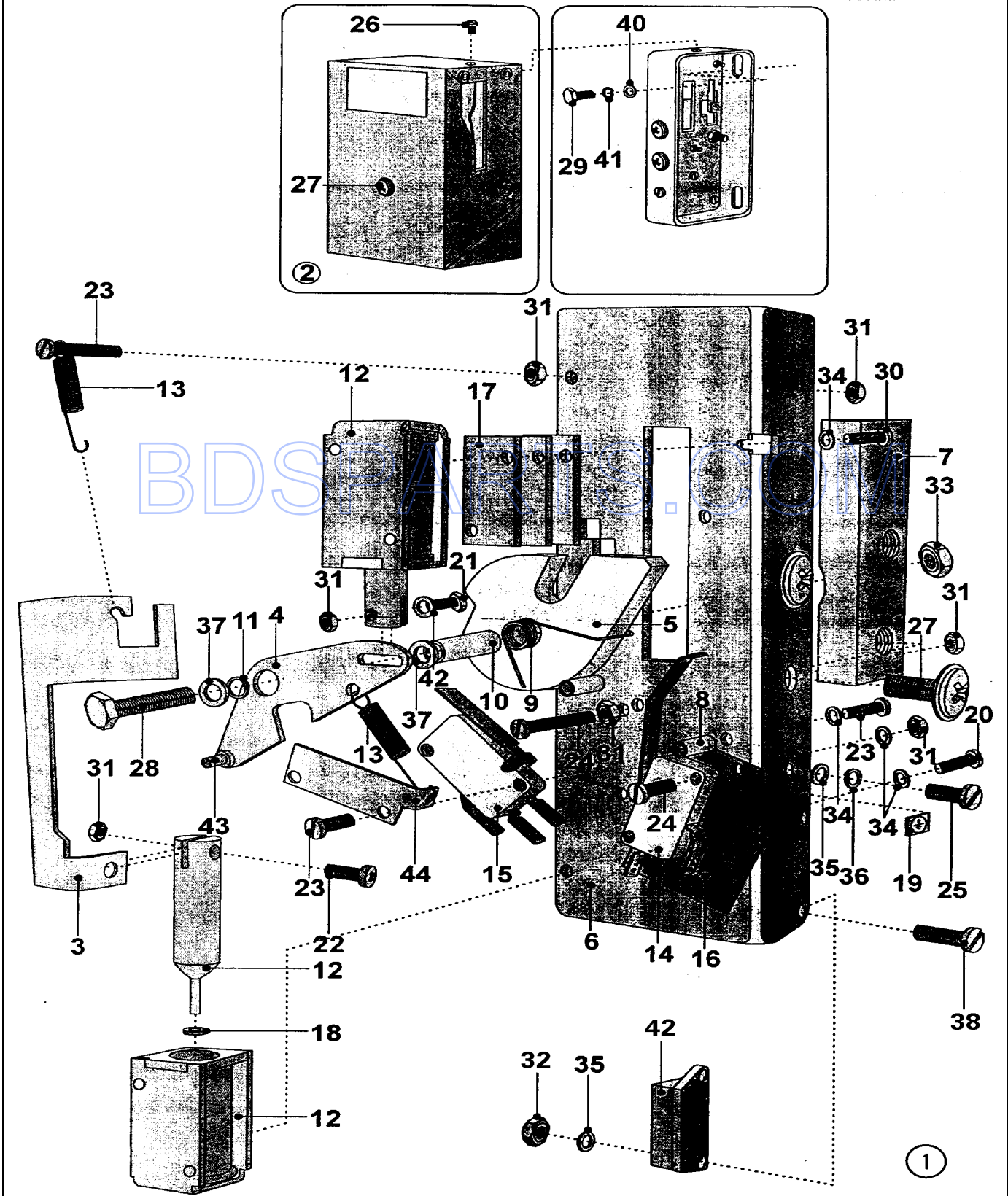
Section: DOOR

No.	Part No.	Description	Series	Qty
1	23003228	DOOR (COMPLETE)	10	1
2	23002635	HOLDER, COVER	10	1
3	23002676	HINGE, DOOR	10	1
4	23002677	HANDLE	10	1
5	23002678	BRACKET	10	2
6	23002679	LEVER, DOOR	10	1
7	23002680	TYRE	10	1
8	23002697	SCREW (M12 X 30)	10	4
9	23002681	INSERTION PIECE	10	8
10	23002682	WASHER	10	8
11	23002683	PLATE	10	4
12	23002684	Z-BRACKET	10	4
13	23002685	NUT, DISPLACING	10	1
14	23002686	WASHER, WEARING	10	2
15	N 23002687	SPACER	10	2
16	23002688	SEAL, GLASS	10	1
17	23002689	SEAL, DOOR	10	1
18	23002690	GLASS	10	1
19	23002265	WASHER	10	4
20	N 23001629	PLATE, "SPIN DIRECTION" INDEX	10	1
21	23001618	SCREW (M6X18)	10	4
22	23001658	SCREW (M6X10)	10	1
23	23002280	NUT (M6)	10	12
24	N 23002392	NUT (M6)	10	8
25	23002129	WASHER (M4)	10	12
26	23002130	WASHER (6)	10	12
27	23002691	PIN	10	1
28	23002692	SLEEVE	10	1
29	23002693	RING, RETAINING (14)	10	1
30	23002698	SCREW, DOOR CONSOLE Note: BOLT, DOOR CONSOLE	10	4
31	N 23002699	WASHER, DOOR CONSOLE	10	4
32	23002696	SLEEVE	10	2
33	23002694	BOARD, CONSOLE	10	2
34	23002695	SUPPORT, CONSOLE	10	2

*Color Code (-)=Not Shown #=Series, Serial Prefix or Run No., N=Not Available

Section: DOOR LOCK

Model: MFS90PNAVS



CW10-38

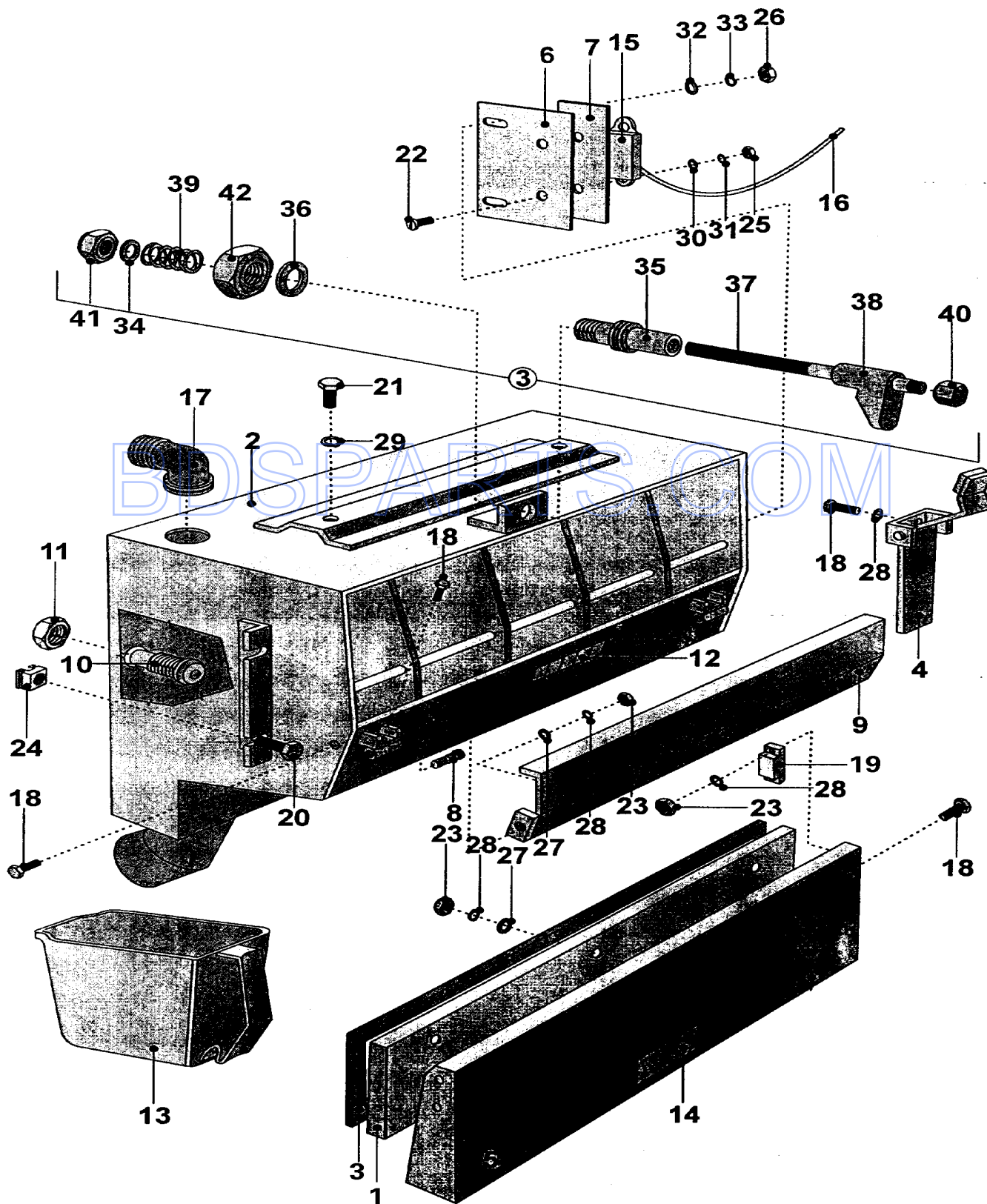
Section: DOOR LOCK

No.	Part No.	Description	Series	Qty
1	23002700	LOCK, DOOR	10	1
2	23002701	COVER, DOOR LOCK	10	1
3	23002702	GATE	10	1
4	23002703	LINK	10	1
5	23002704	CAM LU	10	1
6	23002705	ELEMENT	10	1
7	23002706	RISING SECTION	10	1
8 N	23002707	COLUMN	10	2
9	23002708	SPRING	10	1
10	23002709	TUBE	10	1
11	23002710	RING	10	1
12	23002711	COIL	10	2
13	23002712	SPRING	10	2
14	23002713	MICROSWITCH	10	1
15	23002714	MICROSWITCH	10	1
16	23002715	INSULATION	10	1
17	23002716	WASHER, COIL	10	3
18	23001136	WASHER (DIA. 5.1 X 3.3 X 0.1)	10	2
19 N	23001546	LABEL, EARTH	10	1
20	23002717	SCREW (M3 X 6) Note: SCREW (M3X6)	10	2
21 N	23002183	SCREW (M3X10)	10	2
22	23001635	SCREW (M3X14)	10	2
23	23002718	SCREW (M3 X 16) Note: SCREW (M3X16)	10	3
24	23002719	SCREW (M3 X 20) Note: SCREW (M3X20)	10	3
25	23002720	SCREW (M4 X 8) Note: SCREW (M4X8)	10	1
26	23002721	SCREW (M4 X 12) Note: SCREW (M4X12)	10	2
27	23002722	SCREW (M6 X 12) Note: SCREW (M6X12)	10	3
28	23002463	SCREW (M6 X 30) Note: SCREW (M6X30)	10	1
29	23002723	SCREW (M8 X 22) Note: SCREW (M8X22)	10	2
30	23002724	SCREW (M3 X 12) Note: SCREW (M3X12)	10	2
31	23002500	WASHER, LOCK	10	9
32	23002399	NUT(M4)	10	2
33	23002436	NUT (M6)	10	1
34	23002174	WASHER (3.2)	10	8
35	23002725	WASHER (3)	10	3
36	23002400	WASHER	10	1
37	23002726	WASHER (6)	10	2
38	23002398	SCREW (M4X16)	10	2
39	23002325	WASHER	10	2
40	23001608	WASHER (M8) LU	10	2
41	23002727	WASHER (8) LU	10	2
42	23002730	SEAL	10	1
43	23002728	PIN	10	1
44 N	23002729	HOLDER, COIL	10	1

*Color Code (-)=Not Shown #=Series, Serial Prefix or Run No., N=Not Available

Section: SOAP HOPPER

Model: MFS90PNAVS



CW21-95

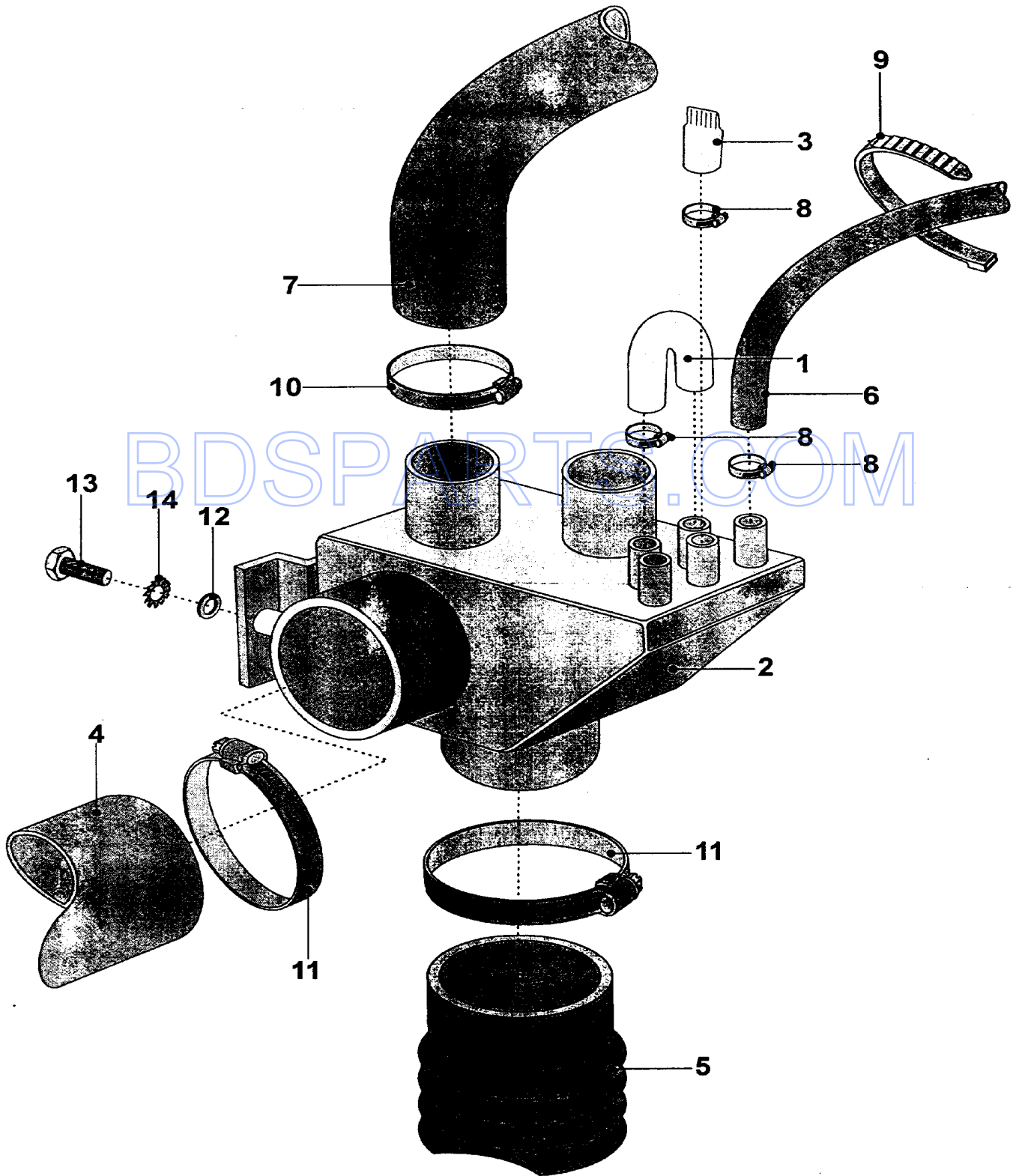
Section: SOAP HOPPER

No.	Part No.	Description	Series	Qty
1	23002751	COVER, INSERT	10	1
2	23002731	SOAPHOPPER	10	1
3	23001666	SEAL (10X20X1130) LU	10	1
4	N 23002732	OVERSEAL	10	5
5	23002733	COVER, SOAPHOPPER	10	1
6	N 23002734	HOLDER	10	1
7	23002735	INSULATION	10	1
8	23002736	PIN, DOOR	10	2
9	23002737	COVER	10	1
10	23002738	NOZZLE	10	5
11	23002739	NUT	10	5
12	N 23002740	PLATE, INDEX	10	1
13	23002135	CUP, SOAP BOX	10	5
14	N 23002741	PLATE, INDEX	10	1
15	23001566	SWITCH, MAGNETIC	10	1
16	23002742	TUBE, INSULATION	10	1
17	N 23002743	ELBOW	10	1
18	23001682	SCREW (M4X6)	10	12
19	23001668	CONTACT, MAGNETIC	10	1
20	23002353	SCREW (M6X12)	10	4
21	N 23002744	SCREW (M6 X 10) Note: SCREW (M6X10)	10	2
22	N 23002183	SCREW (M3X10)	10	2
23	23002652	NUT (QTY OF 4 = 1 PIECE)	10	5
24	23001339	NUT, CAGE	10	4
25	23002500	WASHER, LOCK	10	2
26	23002399	NUT(M4)	10	2
27	N 23002745	WASHER Note: WASHER (4.3)	10	3
28	23002674	SPRING, LOCK WASHER Note: WASHER (4)	10	12
29	23002357	WASHER Note: WASHER (6)	10	2
30	23002174	WASHER (3.2)	10	2
31	N 23002746	WASHER Note: WASHER (3)	10	2
32	23001610	WASHER (4.3)	10	2
33	23002400	WASHER Note: WASHER (4)	10	2
34	23002282	WASHER (6)	10	1
35	23002747	PIN	10	1
36	23002658	WASHER (12)	10	1
37	23002748	SCREW	10	1
38	23002749	LEVER	10	1
39	23002750	SPRING	10	1
40	N 23002392	NUT (M6)	10	1
41	23002471	NUT	10	1
42	N 23002659	NUT (M12)	10	1

*Color Code (-)=Not Shown #=Series, Serial Prefix or Run No., N=Not Available

Section: FILLING SYSTEM

Model: MFS90PNAVS



CW21-96

Section: FILLING SYSTEM

No.	Part No.	Description	Series	Qty
1	23001459	LIQUID SOAP, HOSE Note: HOSE	10	1
2	23002752	MIXER	10	1
4	23001589	TUBE, SOAP BOX (1=210MM) Note: HOSE (EPDM 60/70-520)	10	1
5	23002754	HOSE	10	1
7	23002755	HOSE	10	1
8	23001506	CLAMP, HOSE	10	5
9 N	23001706	SCREW (M3X22)	10	2
10	23001261	CLAMP, HOSE (32-50)	10	2
11	23001256	CLAMP, HOSE (60-80)	10	2
12	23002438	WASHER (M6) Note: WASHER (6)	10	2
13	23002463	SCREW (M6 X 30) Note: SCREW (M6X30)	10	2
14	23002756	WASHER Note: WASHER (6)	10	2

BDSPARTS.COM

*Color Code (-)=Not Shown #=Series, Serial Prefix or Run No., N=Not Available

Section: VALVES

Model: MFS90PNAVS

Hard water loud
Cold water hard
Agua fría dura
Agua fría dura
ZELAZNO EZTVO NEDO
Kylná voda, tvrdá
1 - 8 bar

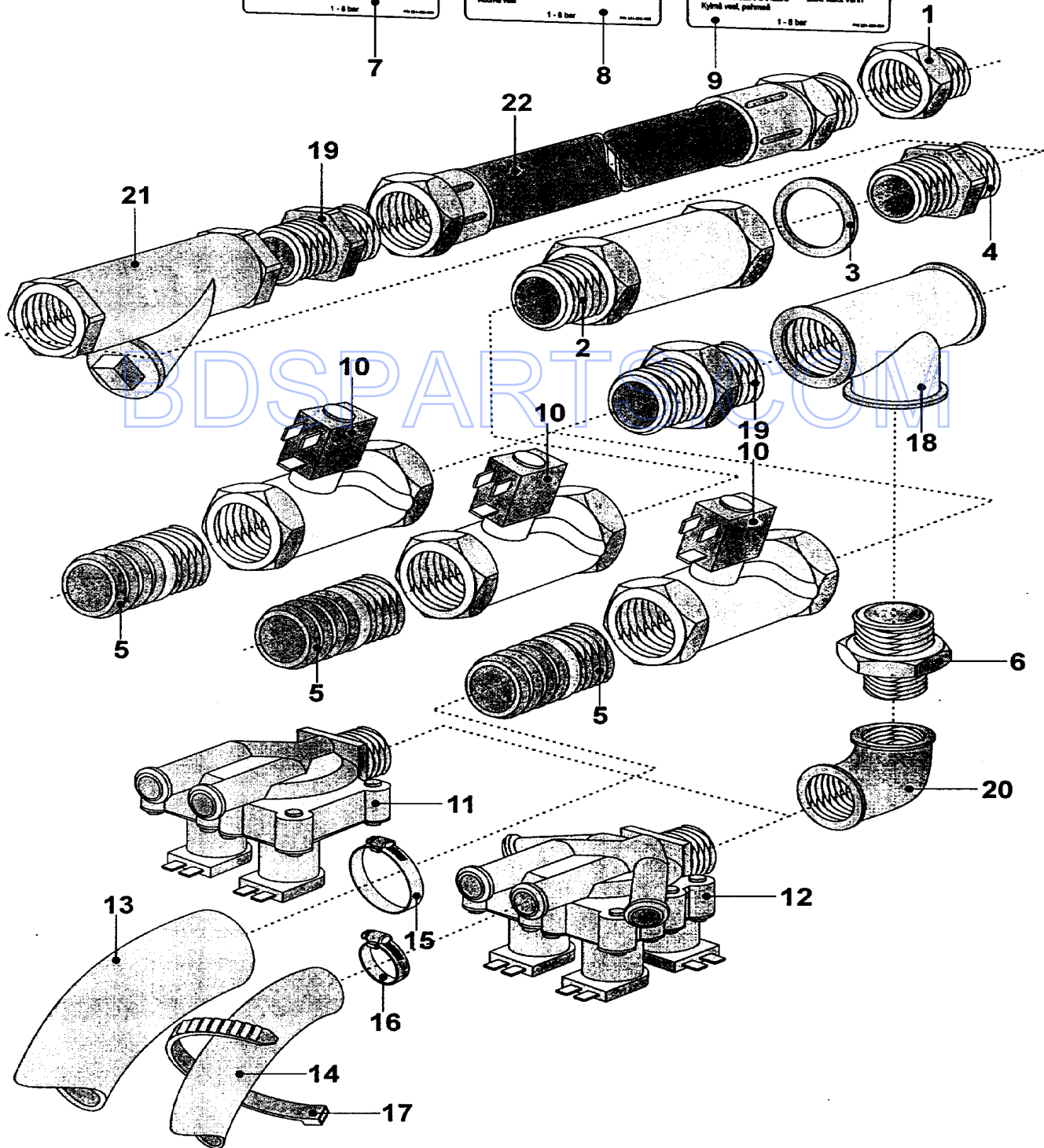
Warm water
Hot water
Agua Caliente
Agua Caliente
ZESTO NEDO
Kuumu vesi
1 - 8 bar

Zacht water loud
Cold water soft
Agua fría descalcificada
Agua fría macia
MAALIKO EIINVO NEDO
Kylmä vesi, pehmeä
1 - 8 bar

Eau dure froide
Kalttes Wasser hart
Kaldt harft vand
Acque froide dura
Herdik kalid varen
1 - 8 bar

Eau Chaude
Warm Wasser
Varmt vand
Acque Calda
Varmi varen
1 - 8 bar

Eau douce froide
Kalttes Wasser weich
Kaldt blaft vand
Acque froide dolce
Blak kalid varen
1 - 8 bar



CW21-97

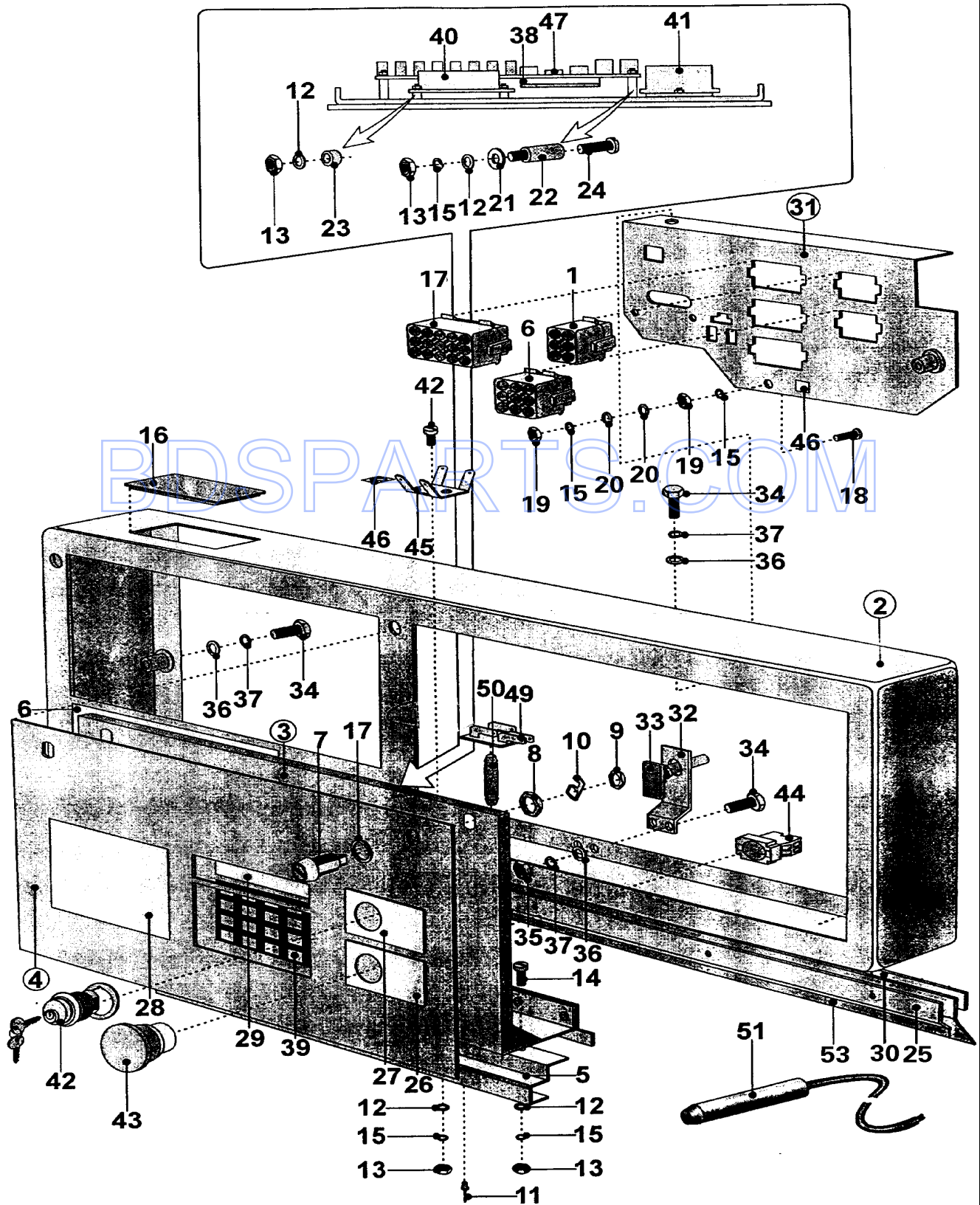
Section: VALVES

No.	Part No.	Description	Series	Qty
1	23001256	CLAMP, HOSE (60-80) Note: ADAPTER	10	3
2	23002757	EXTENSION	10	3
3	23002758	WASHER	10	3
4	23002759	NIPPLE, PIPE	10	3
5	23002760	ONTUBE	10	5
6	23002761	REDUCER	10	2
7	23001471	STICKER, COLD SOFT WATER	10	1
8	23001469	STICKER, HOT WATER	10	1
9	23001470	STICKER, COLD HARD WATER	10	1
-	23003694	COIL, VALVE	10	1
10	23002762	VALVE	10	3
-	23003693	DIAPHRAGM, VALVE	10	1
11	23002070	VALVE, INLET (2-WAY 3/4")	10	1
-	24001121	KIT, VALVE REPAIR (10MM)	10	1
12	23001755	VALVE, FOUR WAY (3/4")	10	1
13	23002755	HOSE	10	3
14	23001507	WATERHOSE (GREEN)	10	6
15	23001261	CLAMP, HOSE (32-50)	10	2
16	23001506	CLAMP, HOSE	10	12
17 N	23001702	PROTECTION, RUBBER	10	5
18	23002069	T-PART (1")	10	2
19	23002068	NIPPLE (1")	10	2
20	23001756	ELBOW (3/4")	10	5
21	23002156	FILTER	10	3
22	23002057	HOSE, WATER INLET	10	3

*Color Code (-)=Not Shown #=Series, Serial Prefix or Run No., N=Not Available

Section: CONTROL PANEL

Model: MFS90PNAVS



CW11-43

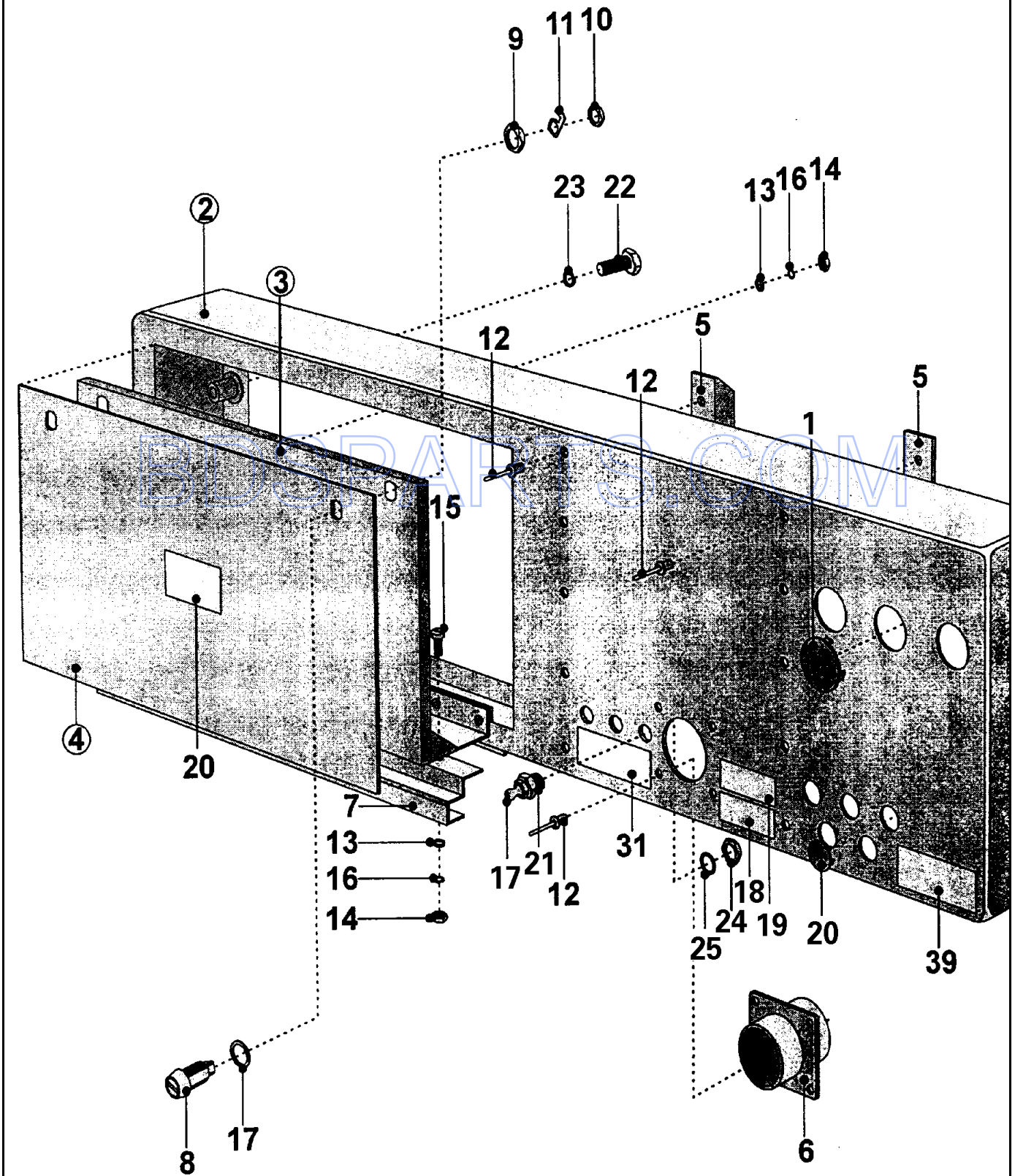
Section: CONTROL PANEL

No.	Part No.	Description	Series	Qty
1	23001723	BOARD, TERMINAL (AMP 6 POLES)	10	1
2	23002763	PANEL, FRONT	10	1
3	23002764	COVER, TOP	10	1
4	23002765	PLATE, INDEX	10	1
5	23002766	SUPPORT, PLATE	10	1
6	23001722	BOARD, TERMINAL (AMP 9 POLES)	10	1
7	23001583	DEVICE, LOCKING	10	2
8	23001008	LOCK NUT (LARGE)	10	2
9	23001011	NUT	10	2
10	23002451	PAWL	10	2
11	N 23002467	RIVET/CRANK (4 X 7.5)	10	8
12	23001610	WASHER (4.3)	10	4
13	23002452	NUT (M4) LU	10	9
14	N 23002453	COVER	10	5
15	23002400	WASHER	10	9
16	N 23002453	COVER	10	1
17	23001721	BOARD, TERMINAL (AMP 15 POLES)	10	1
18	23002778	SCREW (M4 X 12)	10	1
19	N 23002779	NUT (M4)	10	1
20	23002725	WASHER (3)	10	1
21	N 23002767	INSULATION (WASHER)	10	6
22	N 23002768	INSULATION (BOARD SUPPORT)	10	6
23	23001058	SPACER	10	4
24	23002769	SCREW (M4 X 10)	10	6
25	N 23002780	BAR	10	1
26	N 23002770	PLATE (EMERGENCY STOP)	10	1
27	N 23002771	PLATE (HOPPERS-PUMPS)	10	1
28	23002772	PLATE (PROGRAM)	10	1
29	23002163	HOLE, INSPECTION	10	1
30	N 23002781	STRIP	10	1
31	23002773	BRACKET, TERMINAL BOARD	10	1
32	23002774	HOLDER, VIBRATION SWITCH	10	1
33	23002775	SWITCH, VIBRATION	10	1
34	N 23002744	SCREW (M6 X 10)	10	4
35	23002651	NUT (M6)	10	6
36	23002282	WASHER (6)	10	6
37	23002357	WASHER	10	6
-	23003744	CONTROLLER, APL280NS V1.04 Note: (ENGLISH, SPANISH)	10	1
-	23003745	CONTROLLER, APL280NE V1.04 Note: (ENGLISH, FRENCH, GERMAN, AND DUTCH)	10	1
38	23002201	MICROPROCESSOR(MKIIA-20)	10	1
39	23001692	KEYBOARD (MEMBRANE SWITCH)	10	1
40	23001718	BOARD, ADDITIONAL(SOAP BOARD)	10	1
43	23001078	EMERGENCY STOP	10	1
44	23001075	EMERGENCY BLOC (W/LAMP)	10	1
45	N 23002777	CONTACT (6.3 TYPE 140609-0)	10	1
46	N 23001546	LABEL, EARTH	10	1
47	23002202	MICROPROCESSOR CHIP/MKIIA-20	10	1
48	23002025	CONNECTION, ELECTRICAL	10	1
49	23001094	BRIDGE, RECTIFIER	10	2
50	23001099	PC BOARD SOCKET	10	2
51	23001073	SENSOR, TEMPERATURE	10	1
52	23001609	SCREW (M4X12)	10	1
53	23002782	TOP CUFF	10	1

*Color Code (-)=Not Shown #=Series, Serial Prefix or Run No., N=Not Available

Section: REAR PANEL

Model: MFS90PNAVS



CW21-98

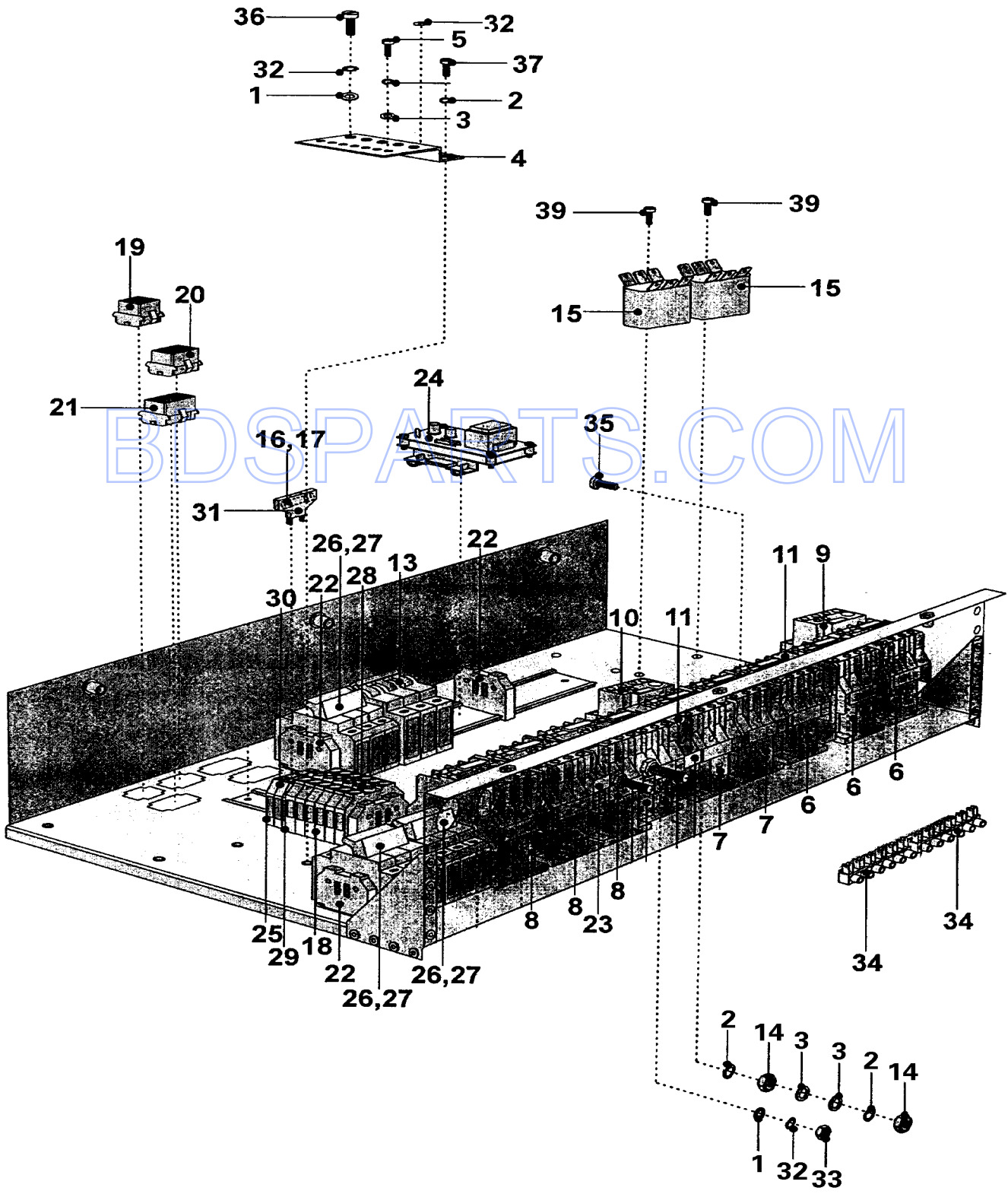
Section: REAR PANEL

No.	Part No.	Description	Series	Qty
1	23002795	PLUG	10	1
2	23002783	PANEL, REAR	10	1
3	23002784	COVER, REAR PANEL	10	1
4	23002785	PLATE, PANEL COVER	10	1
5	23002786	FRAME, PUMPS	10	1
6	23002787	VENT, REAR PANEL	10	1
7	23002766	SUPPORT, PLATE	10	1
8	23001583	DEVICE, LOCKING	10	2
9	23001008	LOCK NUT (LARGE)	10	2
10	23001011	NUT	10	2
11	23002451	PAWL	10	2
12	N 23002467	RIVET/CRANK (4 X 7.5)	10	19
13	23001610	WASHER (4.3)	10	9
14	23002399	NUT(M4)	10	9
15	23002423	SCREW (M4 X 10) Note: SCREW (M4X10)	10	5
16	23002400	WASHER Note: WASHER (4)	10	9
17	23002788	HEAD, GREASING	10	3
18	23002053	LABEL, WARNING VENT OUT	10	1
19	N 23002789	PLATE (PUMPS)	10	1
20	N 23002794	PLUG (13)	10	5
21	N 23002790	SLEEVE, REDUCING	10	3
22	N 23002744	SCREW (M6 X 10) Note: SCREW (M6X10)	10	4
23	23002357	WASHER Note: WASHER (6)	10	4
24	23002791	NUT (M14 X 1.5) Note: NUT (M14X1.5)	10	3
25	23002792	WASHER (14)	10	3

*Color Code (-)=Not Shown #=Series, Serial Prefix or Run No., N=Not Available

Section: ELECTRONICS

Model: MFS90PNAVS



CW21-99

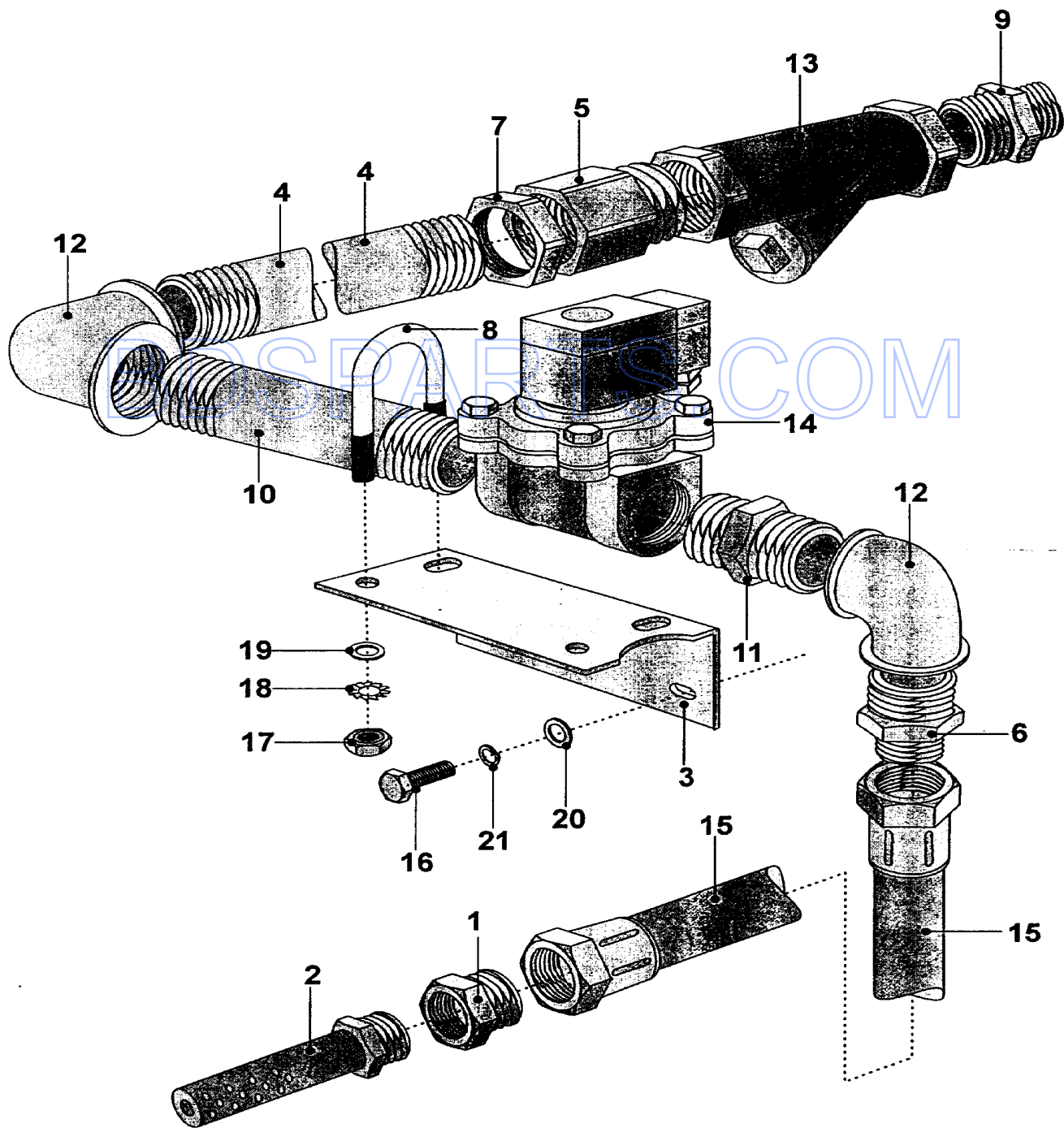
Section: ELECTRONICS

No.	Part No.	Description	Series	Qty
1	23002725	WASHER (3)	10	7
2	23002357	WASHER Note: WASHER (6)	10	8
3	23002726	WASHER (6) Note: WASHER (6.4)	10	6
5	23001733	SCREW (M6X10)	10	4
6	23001101	CONTACTOR (LC1-D1201 M7)	10	3
7	23001102	CONTACTOR (LC1-D1801 M7)	10	2
8	23001103	CONTACTOR (LC1-D3201 M7)	10	1
9	23001106	RELAY, THERMAL OVERLOAD (4-6A)	10	1
10	23001108	RELAY, THERMAL OVERLOAD (7-10A)	10	1
11	23001119	MECHANICAL INTERLOCK, CONTACTO	10	2
12	23002796	CONTACTOR (LC1-D1810 M7)	10	1
13	23002104	BREAKER, CIRCUIT (III-PHASE)	10	1
14	23001515	NUT (M6)	10	1
15	N 23001518	NET FILTER Note: SERIES 15 - NO LONGER NEEDED	10	2
16	23001463	FUSE (2A)	10	1
17	23002043	FUSE (4A)	10	2
18	23002797	CLAMP	10	6
19	23001722	BOARD, TERMINAL (AMP 9 POLES)	10	1
20	N 23002789	PLATE (PUMPS)	10	1
21	23001721	BOARD, TERMINAL (AMP 15 POLES)	10	1
22	23002799	STOP END	10	6
23	N 23001546	LABEL, EARTH	10	2
25	N 23002800	COVER (VAST4-4)	10	1
26	23002801	DISCONNECTOR, FUSE (PST-10X38)	10	2
27	23002802	DISCONNECTOR, FUSE (PV10GG32A)	10	6
28	23002803	BRIDGE (19.116.217-02)	10	3
32	23002400	WASHER Note: WASHER (4)	10	9
33	23002399	NUT(M4)	10	9
34	23002154	BOARD, TERMINAL (6 POLES)	10	2
35	23001609	SCREW (M4X12)	10	6
36	N 23002804	SCREW (M4 X 10) Note: SCREW (M4X10)	10	4
37	23002805	SCREW (M4 X 16) Note: SCREW (M4X16)	10	2
38	23001733	SCREW (M6X10)	10	4
39	N 23002809	SCREW (ST4.2 X 13)	10	2

*Color Code (-)=Not Shown #=Series, Serial Prefix or Run No., N=Not Available

Section: STEAM SUPPLY

Model: MFS90PNAVS



CW21-100

Section: STEAM SUPPLY

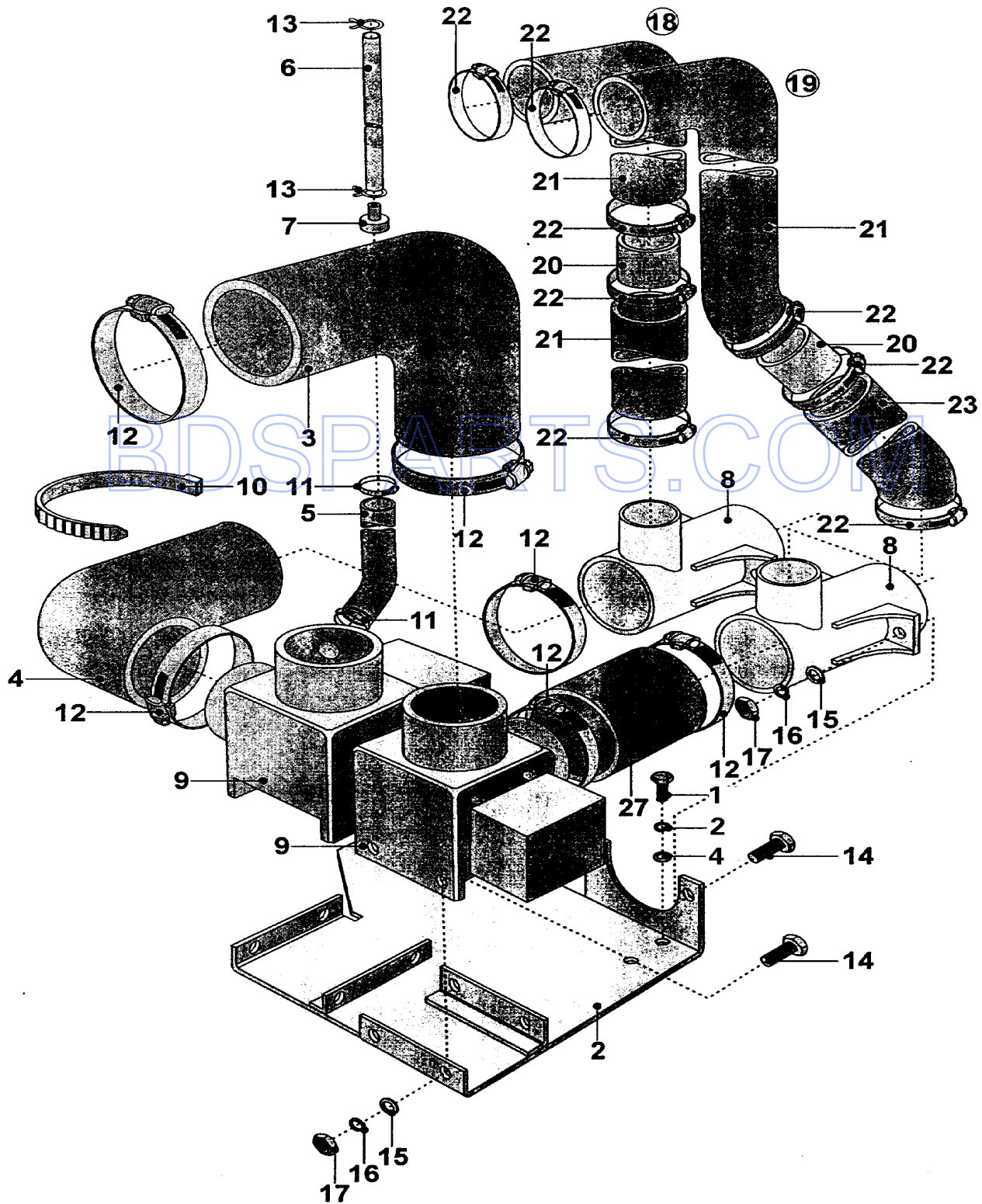
No.	Part No.	Description	Series	Qty
1	23002821	REDUCER (1)	10	1
2	23002811	PIPE, STEAM	10	1
3	23002812	HOLDER	10	1
4	23002813	PIPE (2)	10	1
5	23002814	EXTENSION	10	1
6	23002815	REDUCER (2)	10	2
7	23002816	NUT	10	1
8	23002433	HOLDER	10	2
9	23002761	REDUCER	10	1
10	23002817	PIPE	10	1
11	23001482	NIPPLE (3/4" PIPE THREAD)	10	1
12	23001726	ADAPTOR, LUBRICATION	10	2
13	23002818	PIPE (PROTECTIVE FILTER 1")	10	1
14	23002819	VALVE, STEAM (3/4")	10	1
15	23002820	HOSE, STEAM	10	1
16	23002475	BOLT (M8X20)	10	2
17	23002651	NUT (M6)	10	4
18	23002357	WASHER Note: WASHER (6)	10	4
19	23002282	WASHER (6) Note: WASHER (6.4)	10	4
20	23002653	WASHER (8/6) Note: WASHER (8.4)	10	2
21	23002358	WASHER (M8) Note: WASHER (8)	10	2

BDS PARTS.COM

*Color Code (-)=Not Shown #=Series, Serial Prefix or Run No., N=Not Available

Section: DRAIN SYSTEM

Model: MFS90PNAVS



CW21-101

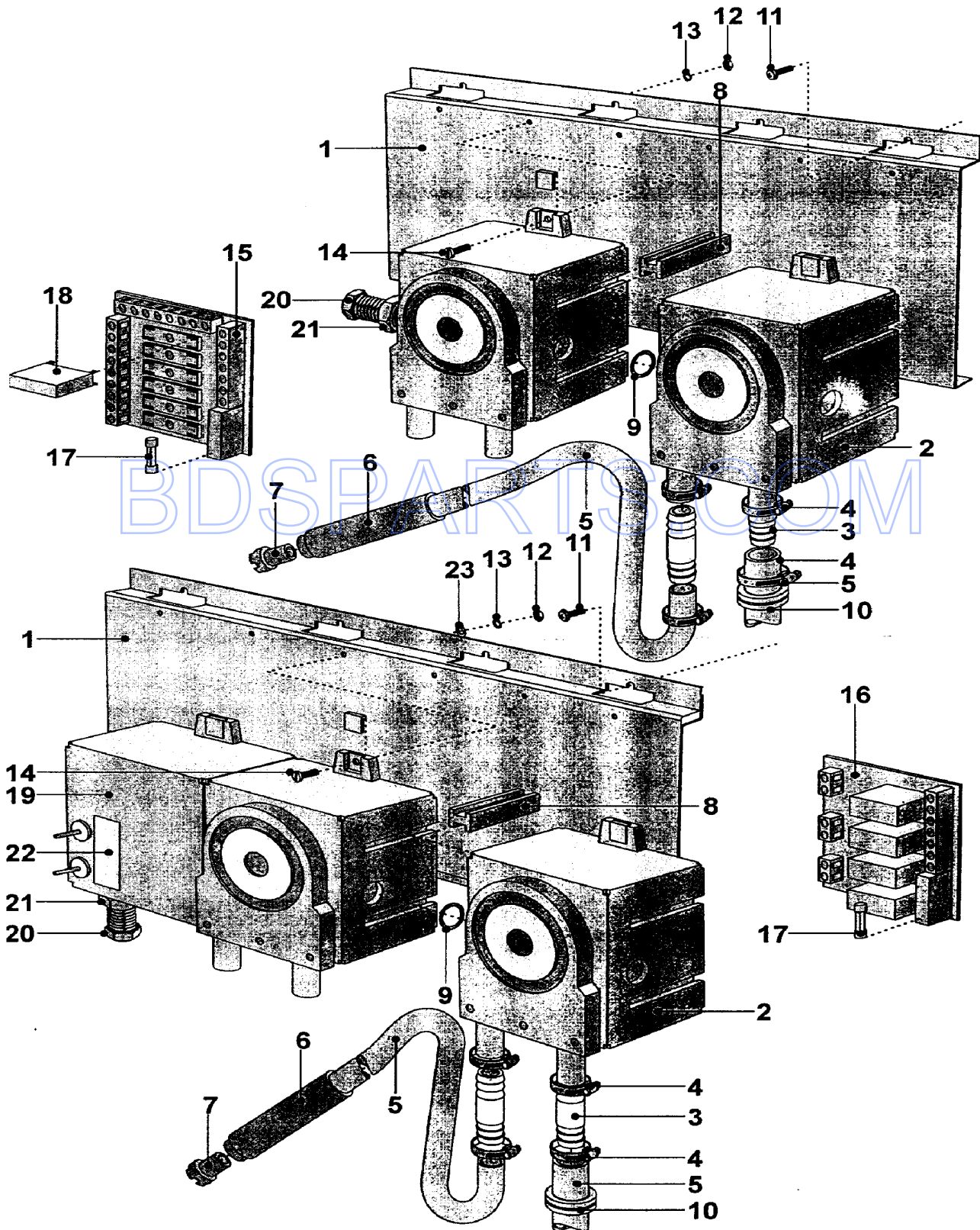
Section: DRAIN SYSTEM

No.	Part No.	Description	Series	Qty
1	23002354	SCREW (M6X16)	10	2
2	23002357	WASHER Note: WASHER (6)	10	2
3	23002822	ELBOW, 90 DEGREE	10	3
4	23002282	WASHER (6)	10	2
5	23001762	ELBOW	10	1
6	23001252	HOSE, WATER LEVEL SWITCH	10	1
7	23001260	BUSHING, AIR DOME HOSE	10	1
8	23001253	DRAIN TEE	10	2
9	23001244	VALVE, DRAIN (240V-50/60HZ)	10	2
10	23001720	BINDER, CABLE	10	5
11	23001262	CLAMP, HOSE (20-32)	10	2
12	23001258	CLAMP, HOSE (70-90)	10	12
13	23001257	CLAMP, CORBIN (A5.5)	10	2
14	23002475	BOLT (M8X20)	10	8
15	23002653	WASHER (8/6) Note: WASHER (8.4)	10	8
16	23002358	WASHER (M8) Note: WASHER (8)	10	8
17	23002435	NUT (M8)	10	8
18	23002824	HOSE, DIRECT	10	2
19	23002825	HOSE, BENDED	10	2
20	23002826	PIPE (40)	10	2
21	23001760	HOSE, OVERFLOW	10	2
22	23001750	RING, CLAMP (40-60)	10	8
23	23001251	HOSE, OVERFLOW	10	1

*Color Code (-)=Not Shown #=Series, Serial Prefix or Run No., N=Not Available

Section: PUMP BOARD

Model: MFS90PNAVS



CW21-102

Section: PUMP BOARD

No.	Part No.	Description	Series	Qty
1	23002827	BRACKET, PUMP	10	1
2	23001730	PUMP, SOAP	10	1
3	23002828	CONNECTOR	10	2
4	N 23002829	CLAMP (10-16/7.5)	10	8
5	23002193	HOSE	10	2
6	23002830	TUBE (PVC 3/4")	10	1
7	23002831	ADAPTER (PVC 10)	10	1
8	N 23002832	WEDGE	10	2
9	N 23002833	O-RING	10	1
10	N 23002834	PASSAGE, CABLE (13 X 2) Note: PASSAGE, CABLE (13X2)	10	2
11	N 23002835	SCREW (M6 X 10) Note: SCREW (M6X10)	10	4
12	23002466	NUT (M5)	10	4
13	23002836	WASHER (5)	10	4
14	N 23002837	SCREW (M5 X 12) Note: SCREW (M5X12)	10	4
15	23002320	BOARD, AUXILLARY RELAY	10	1
17	23002838	FUSE (1.6A)	10	1
18	23002839	RELAY	10	1
20	23002196	SWIVEL, CABLE	10	1
21	23002197	NUT	10	1

BDSPARTS.COM

*Color Code (-)=Not Shown #=Series, Serial Prefix or Run No., N=Not Available