



# **ML-130 Parts Manual 1997 thru 2000**

---

**American Dryer Corporation**  
88 Currant Road  
Fall River, MA 02720-4781  
Telephone: (508) 678-9000 / Fax: (508) 678-9447  
e-mail: techsupport@amdry.com

# Retain This Manual In A Safe Place For Future Reference

**American Dryer Corporation** products embody advanced concepts in engineering, design, and safety. If this product is properly maintained, it will provide many years of safe, efficient, and trouble-free operation.

*ONLY qualified technicians should service this equipment.*

**OBSERVE ALL SAFETY PRECAUTIONS** displayed on the equipment or specified in the installation/operator's manual included with the dryer.

The following “**FOR YOUR SAFETY**” caution **must be** posted near the dryer in a prominent location.

**FOR YOUR SAFETY**

Do not store or use gasoline or other flammable vapors or liquids in the vicinity of this or any other appliance.

**POUR VOTRE SÉCURITÉ**

Ne pas entreposer ni utiliser d'essence ni d'autres vapeurs ou liquides inflammables dans le voisinage de cet appareil ou de tout autre appareil.

We have tried to make this manual as complete as possible and hope you will find it useful. **ADC** reserves the right to make changes from time to time, without notice or obligation, in prices, specifications, colors, and material, and to change or discontinue models.

## Important

For your convenience, log the following information:

**DATE OF PURCHASE** \_\_\_\_\_ **MODEL NO.**           **ML-130**          

**DISTRIBUTORS NAME** \_\_\_\_\_

**Serial Number(s)** \_\_\_\_\_  
\_\_\_\_\_  
\_\_\_\_\_

Replacement parts can be obtained from your distributor or the **ADC** factory. When ordering replacement parts from the factory, you can FAX your order to **ADC** at (508) 678-9447 or telephone your orders directly to the **ADC** Parts Department at (508) 678-9000. Please specify the dryer **model number** and **serial number** in addition to the **description** and **part number**, so that your order is processed accurately and promptly.

The illustrations on the following pages may not depict your particular dryer exactly. The illustrations are a composite of the various dryer models. Be sure to check the descriptions of the parts thoroughly before ordering.

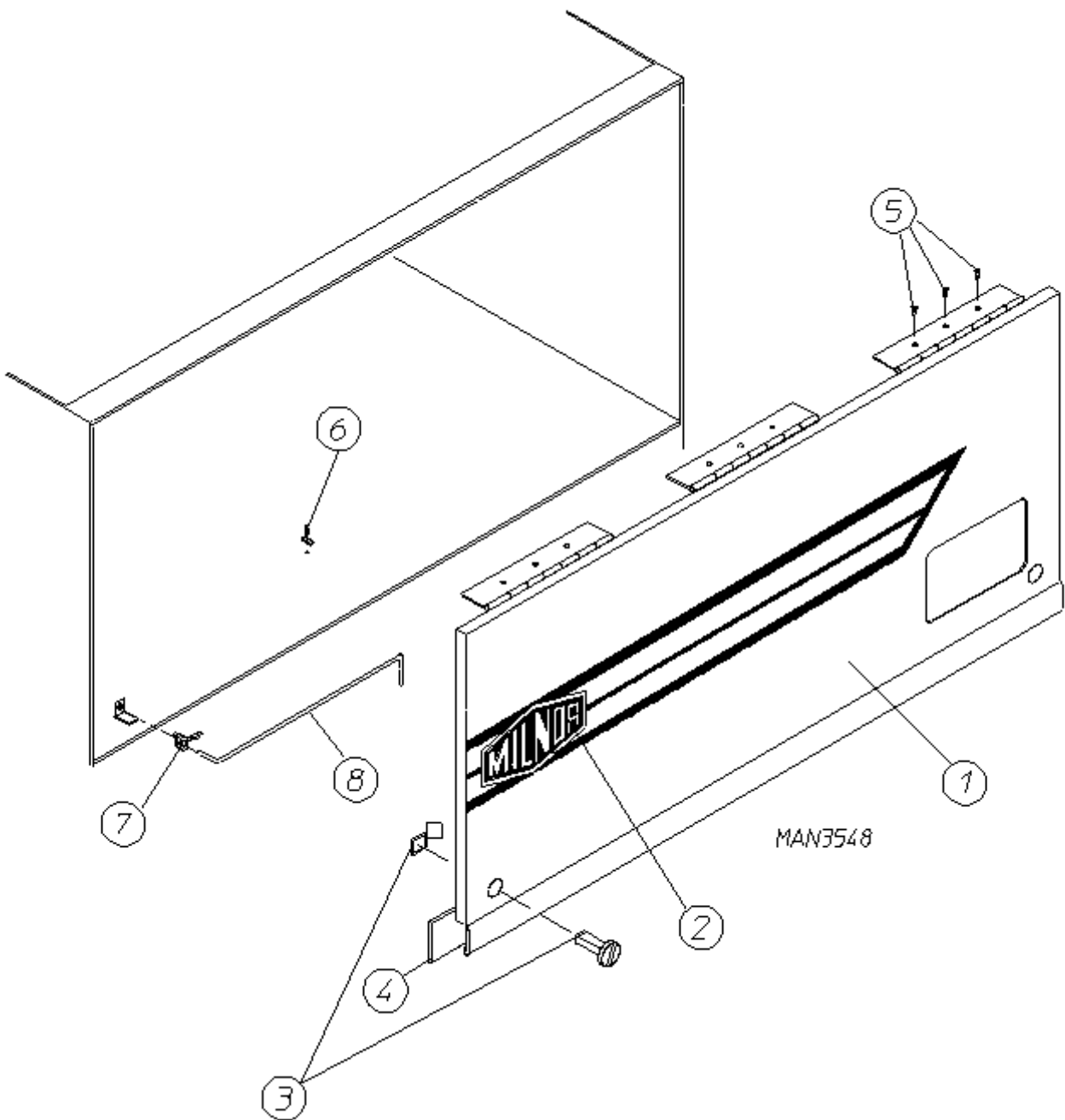
**“IMPORTANT NOTE TO PURCHASER”**

Information must be obtained from your local gas supplier on the instructions to be followed if the user smells gas. These instructions must be posted in a prominent location near the dryer.

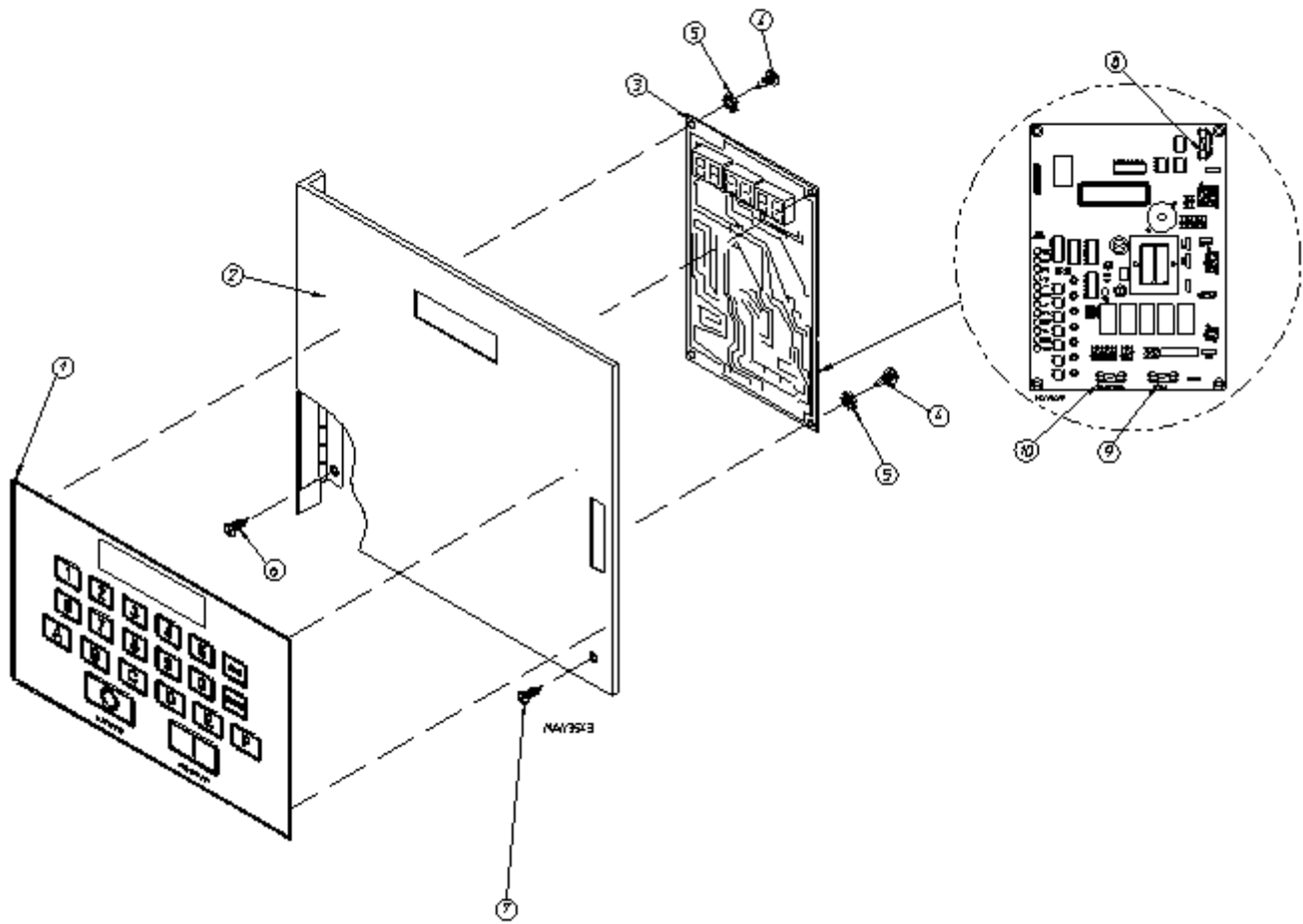
# Table of Contents

|   |        |
|---|--------|
| Control Door Assembly .....   | 3      |
| Microprocessor Control Panel Assembly .....                                       | 4, 5   |
| Front Panel/Main Door Assemblies  |        |
| <b>for models mfd. as of October 24, 1997</b> .....                               | 6, 7   |
| Front Panel/Main Door Assemblies  |        |
| <b>for models mfd. prior to October 24, 1997</b> .....                            | 8      |
| Main Door Switch Assembly   |        |
| <b>for models mfd. as of October 24, 1997</b> .....                               | 9      |
| Main Door Switch Assembly   |        |
| <b>for models mfd. as of October 24, 1997</b> .....                               | 10     |
| Drop Lint Drawer Assembly .....   | 11     |
| Lint Drawer/Lint Drawer Switch Box Assemblies .....                               | 12     |
| Temperature Sensor Bracket Assembly .....   | 13     |
| Basket (Tumbler)/Support Assemblies .....   | 14, 15 |
| Tumbler Bearing Mount Assembly .....  | 16, 17 |
| Idler Bearing Mount Assembly .....  | 18, 19 |
| Totally Enclosed, Fan-Cooled (T.E.F.C.) Basket/Tumbler Motor Mount Assembly ..... | 20, 21 |
| Impellor/Fan Shaft Assembly .....   | 22, 23 |
| Blower Motor Mount Assembly   |        |
| <b>for Gas Models ONLY</b> .....  | 24, 25 |
| Blower Motor Mount Assembly   |        |
| <b>for Electric Models ONLY</b> .....   | 26, 27 |
| Blower Motor Mount Assembly   |        |
| <b>for Steam Models ONLY</b> .....  | 28     |
| Sail Switch Assembly .....  | 29     |
| Hot Surface Ignition (HSI) Gas Burner Assembly .....                              | 30, 31 |
| Hot Surface Ignition (HSI) Liquid Propane (L.P.) Gas Burner Assembly .....        | 32, 33 |
| Electric Oven Assembly .....  | 34, 35 |
| Electric Oven Relay Box Assembly  |        |
| <b>for 208-240 VAC - 3<math>\phi</math> - 50/60 Hz Models ONLY</b> .....          | 36     |
| Electric Oven Relay Box Assembly  |        |
| <b>for 380-416/480 VAC - 3<math>\phi</math> - 50/60 Hz Models ONLY</b> .....      | 37     |
| Steam Damper Assembly .....   | 38, 39 |
| Reversing Relay Panel Assembly  |        |
| <b>for Gas and Steam Models ONLY</b>  |        |
| <b>for 208-230/240 Volt Models ONLY</b> .....                                     | 40, 41 |
| Reversing Relay Panel Assembly  |        |
| <b>for Gas and Steam Models ONLY</b>  |        |
| <b>for 380/416 Volt Models ONLY</b> .....   | 42, 43 |
| Reversing Relay Panel Assembly  |        |
| <b>for Gas and Steam Models ONLY</b>  |        |
| <b>for 460/480 Volt Models ONLY</b> .....   | 44, 45 |

|   |        |
|---|--------|
| Reversing Relay Panel Assembly  |        |
| <i>for Electric Models ONLY</i> .....                                   | 46, 47 |
| Back Guard Assemblies .....   | 48, 49 |
| Electric Oven Component Application Listing .....                       | 50     |
| Electric Oven Power Distribution  |        |
| <b>72 Kw - 208-240 VAC - 3<math>\phi</math> - 50/60 Hz</b> .....        | 51     |
| Electric Oven Power Distribution  |        |
| <b>72 Kw - 380-416/480 VAC - 3<math>\phi</math> - 50/60 Hz</b> .....    | 52     |
| Electric Oven Power Distribution  |        |
| <b>80 Kw - 208-240 VAC - 3<math>\phi</math> - 50/60 Hz</b> .....        | 53     |
| Electric Oven Power Distribution  |        |
| <b>80 Kw - 380-416/480 VAC - 3<math>\phi</math> - 50/60 Hz</b> .....    | 54     |
| Electric Oven Wiring  |        |
| <b>72/80 Kw - 208-240 VAC - 3<math>\phi</math> - 50/60 Hz</b> .....     | 55     |
| Electric Oven Power Distribution  |        |
| <b>72/80 Kw - 380-416/480 VAC - 3<math>\phi</math> - 50/60 Hz</b> ..... | 56     |
| Additional Parts Available .....  | 57     |



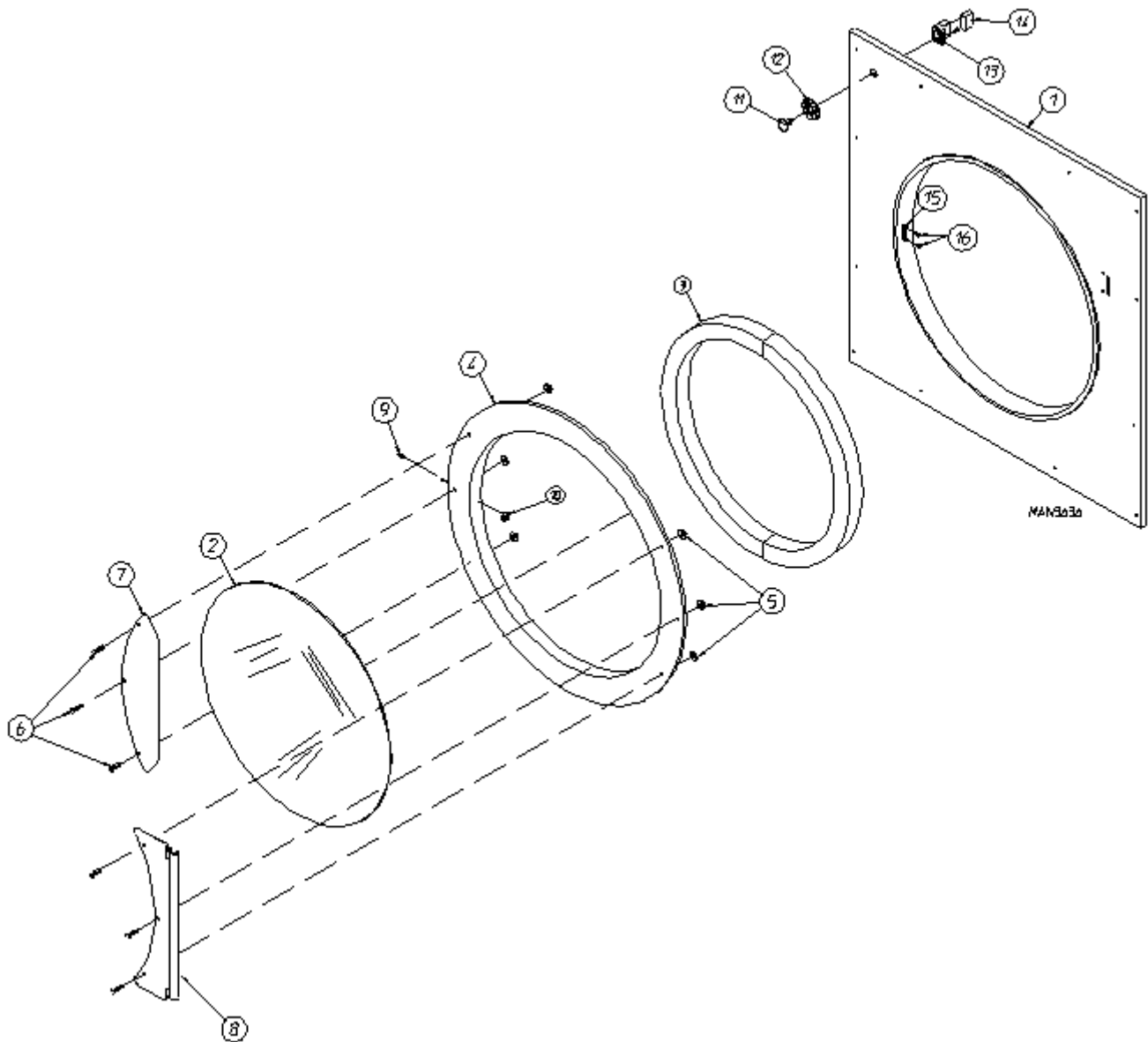
| Illus. No. | Part No. | Qty. | Description                               |
|------------|----------|------|---|
| 1          | 881893   | 1    | White Control Door Assembly ONLY          |
|            | 881894   | 1    | Blue Control Door Assembly ONLY           |
| 2          | 112368   | 1    | Logo/Label ONLY                           |
| 3          | 160005   | 2    | Spring Turn Latch (2-piece)               |
| 4          | 117603   | 5    | Noise Suppressor Tape (sold by the foot)  |
| 5          | 150309   | 9    | #10-16 x 1/2" Hex Head TEK Crimpite Screw |
| 6          | 102600   | 1    | Control Door Rod Catch                    |
| 7          | 102601   | 1    | Control Door Retainer Clip                |
| 8          | 102505   | 1    | Control Door Support Rod                  |



---

| <u>Illus. No.</u> | <u>Part No.</u> | <u>Qty.</u> | <u>Description</u>  |
|-------------------|-----------------|-------------|---|
| 1                 | 112537          | 1           | Phase 6 OPL Keypad  |
|                   | 112276          | 1           | OPL Stick-on Labels<br>(English Only) ... Not Illustrated   |
|                   | 112275          | 1           | OPL Stick-on Labels<br>(Spanish, Italian, and Hebrew) ... Not Illustrated                           |
|                   | 112277          | 1           | 3 Language OPL Stick-on Labels<br>(English, Spanish, and Hebrew) ... Not Illustrated                |
|                   | 112278          | 1           | 5 Language OPL Stick-on Labels<br>(Italian, Dutch, French, German, and Chinese) ... Not Illustrated |
| 2                 | 824481          | 1           | Phase 6 Microprocessor (computer) Panel Assembly  |
| 3                 | 137122          | 1           | Phase 6 Reversing Microprocessor Controller (computer)  |
| 4                 | 150005          | 2           | #6-32 x 3/4" Phillips Round Head Machine Screw  |
| 5                 | 153010          | 2           | #6 Star Washer  |
| 6                 | 150005          | 3           | #6-32 x 3/4" Phillips Round Head Machine Screw  |
| 7                 | 150005          | 1           | #6-32 x 3/4" Phillips Round Head Machine Screw  |
| 8                 | 136048          | 1           | 1/8-Amp Fuse  |
| 9                 | 136017          | 1           | 3.15-Amp (Fast Acting) Fuse   |
| 10                | 136019          | 1           | 1-Amp (Fast Acting) Fuse  |

for models mfd. as of October 24, 1997



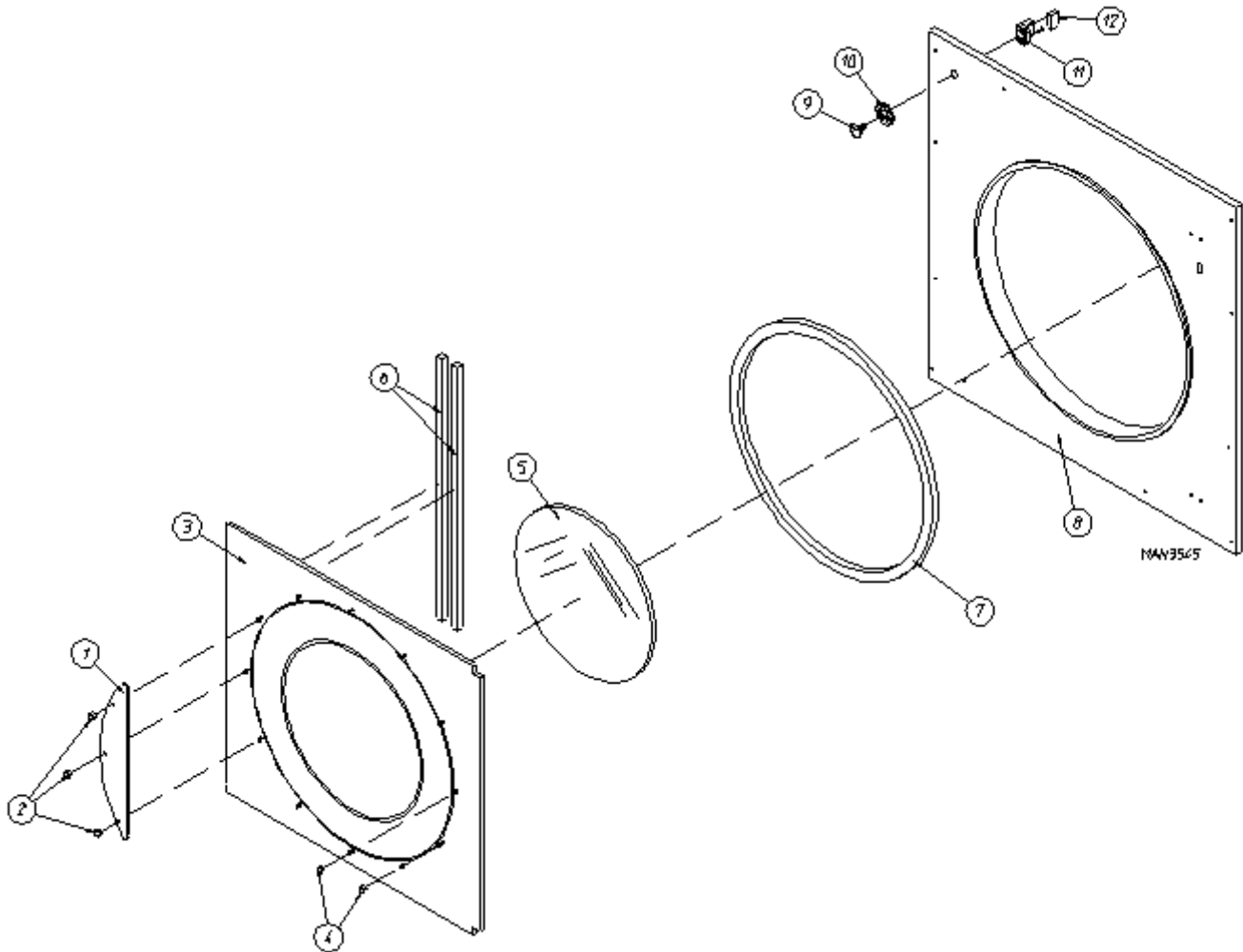


---

**for models mfd. as of October 24, 1997**

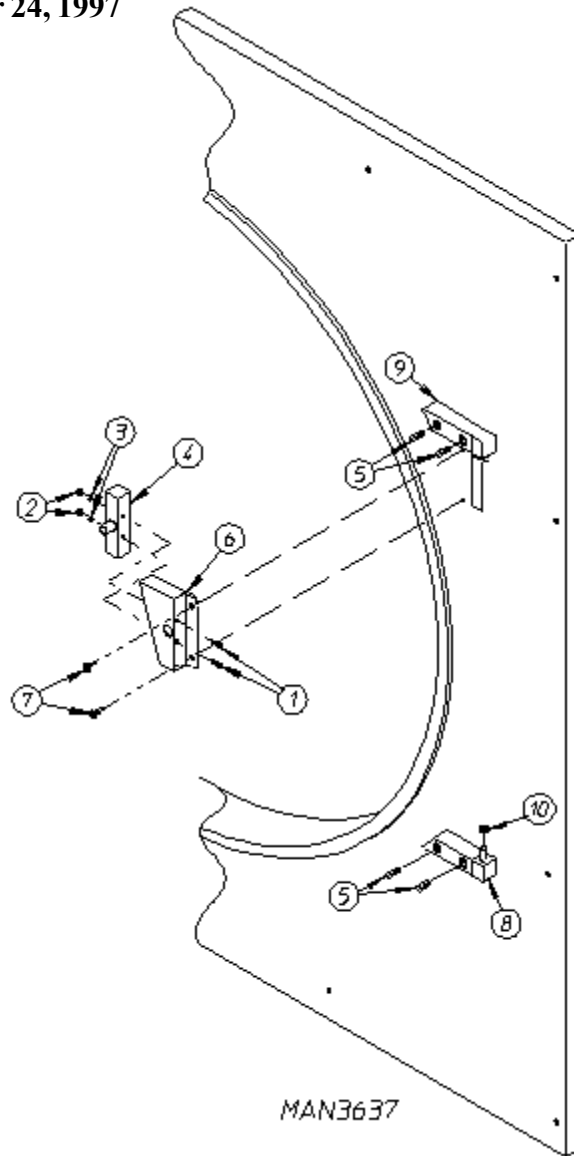
| <u>Illus. No.</u> | <u>Part No.</u> | <u>Qty.</u> | <u>Description</u>   |
|-------------------|-----------------|-------------|--|
| 1                 | 881897          | 1           | White Front Panel Assembly<br>(includes illus. nos. 1, 15, and 16)       |
|                   | 881898          | 1           | Blue Front Panel Assembly<br>(includes illus. nos. 1, 15, and 16)        |
| 2                 | 102214          | 1           | 29-7/8" Door Glass   |
|                   | 170730          | 1           | Door Glass Adhesive (10.3 oz. cartridge)                                 |
| 3                 | 882411          | 9 ft        | Main Door Gasket   |
| 4                 | 881689          | 1           | White Main Door Assembly Complete<br>(includes illus. nos. 2 through 10) |
|                   | 881761          | 1           | Blue Main Door Assembly Complete<br>(includes illus. nos. 2 through 10)  |
|                   | 881684          | 1           | White Main Door Ring   |
|                   | 881756          | 1           | Blue Main Door Ring  |
| 5                 | 881806          | 6           | 1/4-20 Free Spin Wash Nut (White)  |
|                   | 881807          | 6           | 1/4-20 Free Spin Wash Nut (Blue)   |
| 6                 | 881740          | 6           | 1/4-20 x 5/8" (White) Carriage Bolt                                      |
|                   | 881739          | 6           | 1/4-20 x 5/8" (Blue) Carriage Bolt                                       |
| 7                 | 881688          | 1           | White Main Door Handle   |
|                   | 881737          | 1           | Blue Main Door Handle  |
| 8                 | 881685          | 1           | White Main Door Hinge  |
|                   | 881757          | 1           | Blue Main Door Hinge   |
| 9                 | 150120          | 1           | Main Door Latch Screw<br>(#10-32 Dome Hex Head Screw)                    |
| 10                | 151010          | 1           | #10-32 Acorn Nut   |
| 11                | 122351          | 1           | "EMERGENCY STOP" Push-Pull Button  |
| 12                | 122419          | 1           | "EMERGENCY STOP" Nameplate   |
| 13                | 132387          | 1           | Normally Closed (N.C.) Contact Block                                     |
| 14                | 132395          | 1           | Normally Closed (N.C.) Contact Block with Base                           |
| 15                | 170330          | 1           | Friction Door Latch  |
| 16                | 154215          | 2           | 5/32" Pop Rivet  |

for models mfd. prior to October 24, 1997



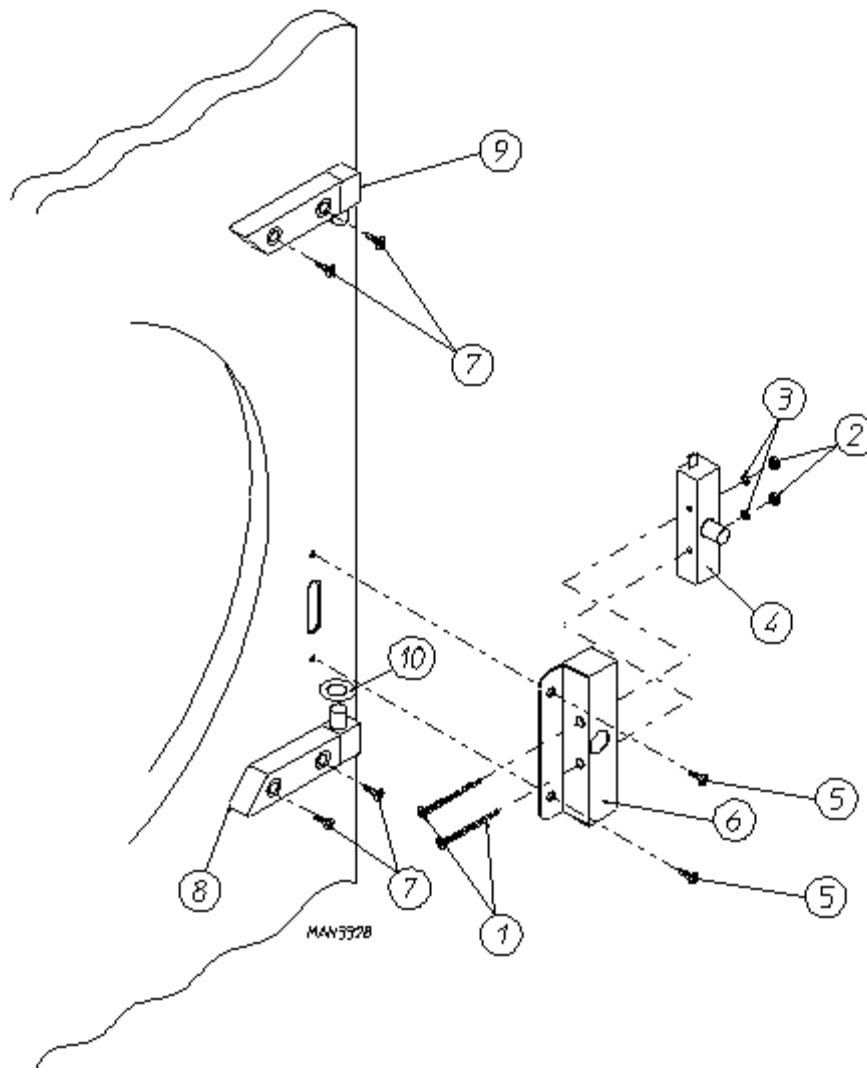
| Illus. No. | Part No. | Qty. | Description  |
|------------|----------|------|--|
| 1          | 881741   | 1    | White Main Door Handle   |
|            | 881760   | 1    | Blue Main Door Handle  |
| 2          | 151011   | 3    | 5/16-18 Acorn Nut  |
| 3          | 881818   | 1    | White Front Panel/Main Door Assembly<br>(includes illus. nos. 1 through 7) |
|            | 881552   | 1    | White Main Door ONLY   |
|            | 881823   | 1    | Blue Front Panel/Main Door Assembly<br>(includes illus. nos. 1 through 7)  |
|            | 881550   | 1    | Blue Main Door ONLY)   |
| 4          | 151011   | 9    | 5/16-18 Acorn Nut  |
| 5          | 102210   | 1    | 20-7/16" Door Glass  |
|            | 170730   | 1    | Door Glass Adhesive (10.3 oz. cartridge)                                   |
| 6          | 102112   | 2    | Door Magnet (5/16" x 1/4" x 34-3/4")                                       |
| 7          | 102356   | 1    | Main Door Gasket (13-1/6" x 1-3/8" x 97-1/2")                              |
| 8          | 881901   | 1    | White Front Panel ONLY for "EMERGENCY STOP"                                |
|            | 881902   | 1    | Blue Front Panel ONLY for "EMERGENCY STOP"                                 |
| 9          | 122351   | 1    | "EMERGENCY STOP" Push-Pull Button  |
| 10         | 122419   | 1    | "EMERGENCY STOP" Nameplate   |
| 11         | 132387   | 1    | Normally Closed (N.C.) Contact Block                                       |
| 12         | 132395   | 1    | Normally Closed (N.C.) Contact Block with Base                             |

for models mfd. as of October 24, 1997

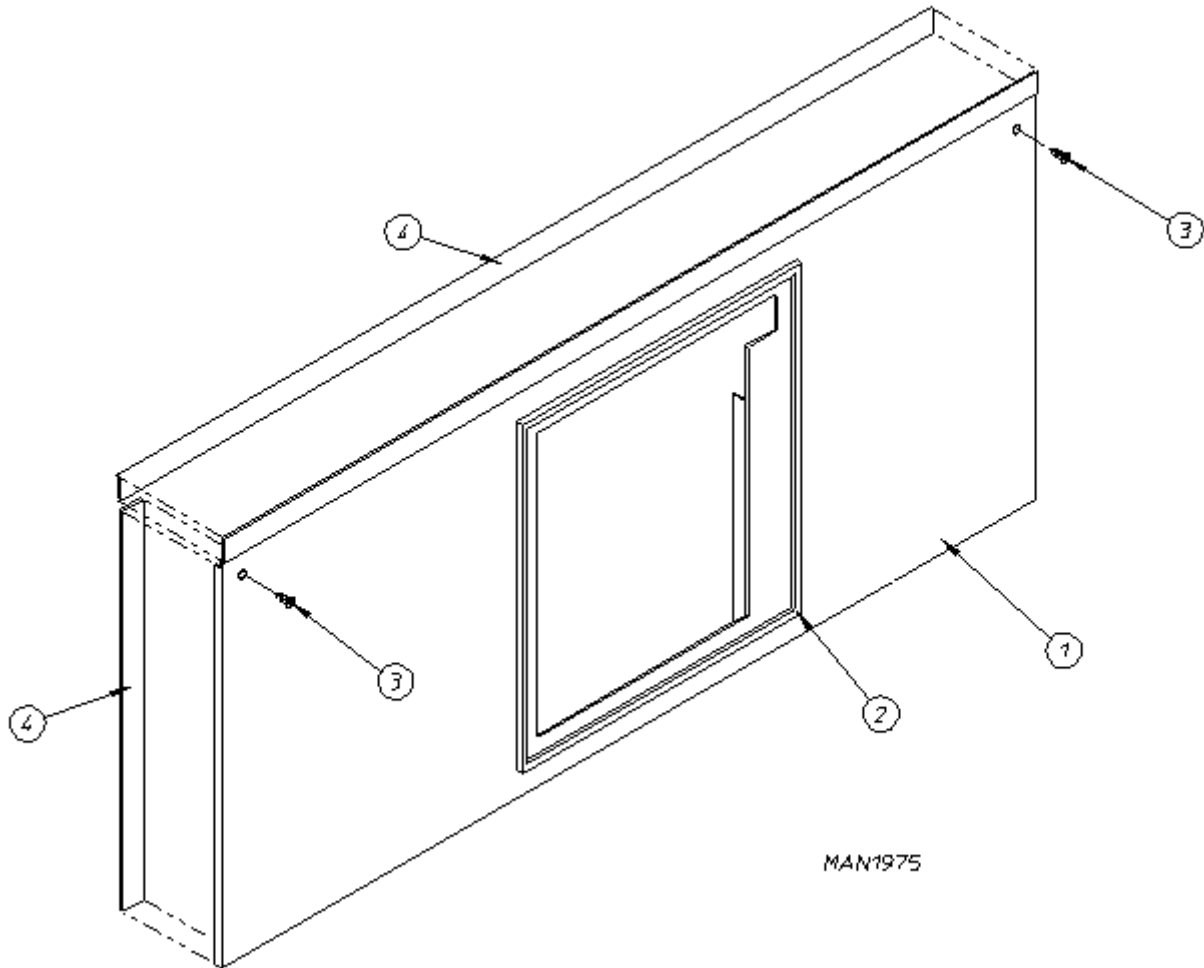


| <u>Illus. No.</u> | <u>Part No.</u> | <u>Qty.</u> | <u>Description</u>   |
|-------------------|-----------------|-------------|--|
| 1                 | 150006          | 2           | #6-32 x 7/8" Phillips Pan Head Machine Screw   |
| 2                 | 152013          | 2           | #6-32 Hex Nut  |
| 3                 | 153010          | 2           | #6 Star Washer   |
| 4                 | 137005          | 1           | Single Pole Door Switch  |
| 5                 | 150301          | 4           | #8-18 x 7/16" Phillips Pan Head TEK Screw  |
| 6                 | 881687          | 1           | White Main Door Switch Housing ONLY  |
|                   | 881695          | 1           | Blue Main Door Switch Housing ONLY   |
|                   | 881702          | 1           | White Main Door Switch with Housing Assembly<br>(includes illus. nos. 1 through 4 and 6) |
|                   | 881700          | 1           | Blue Main Door Switch with Housing Assembly<br>(includes illus. nos. 1 through 4 and 6)  |
| 7                 | 150301          | 2           | #8-18 x 7/16" Phillips Pan Head TEK Screw  |
| 8                 | 881441          | 1           | White Bottom Hinge Block   |
|                   | 881735          | 1           | Blue Bottom Hinge Block  |
| 9                 | 881440          | 1           | White Top Hinge Block  |
|                   | 881736          | 1           | Blue Top Hinge Block   |
| 10                | 153031          | 1           | Nylon Washer   |

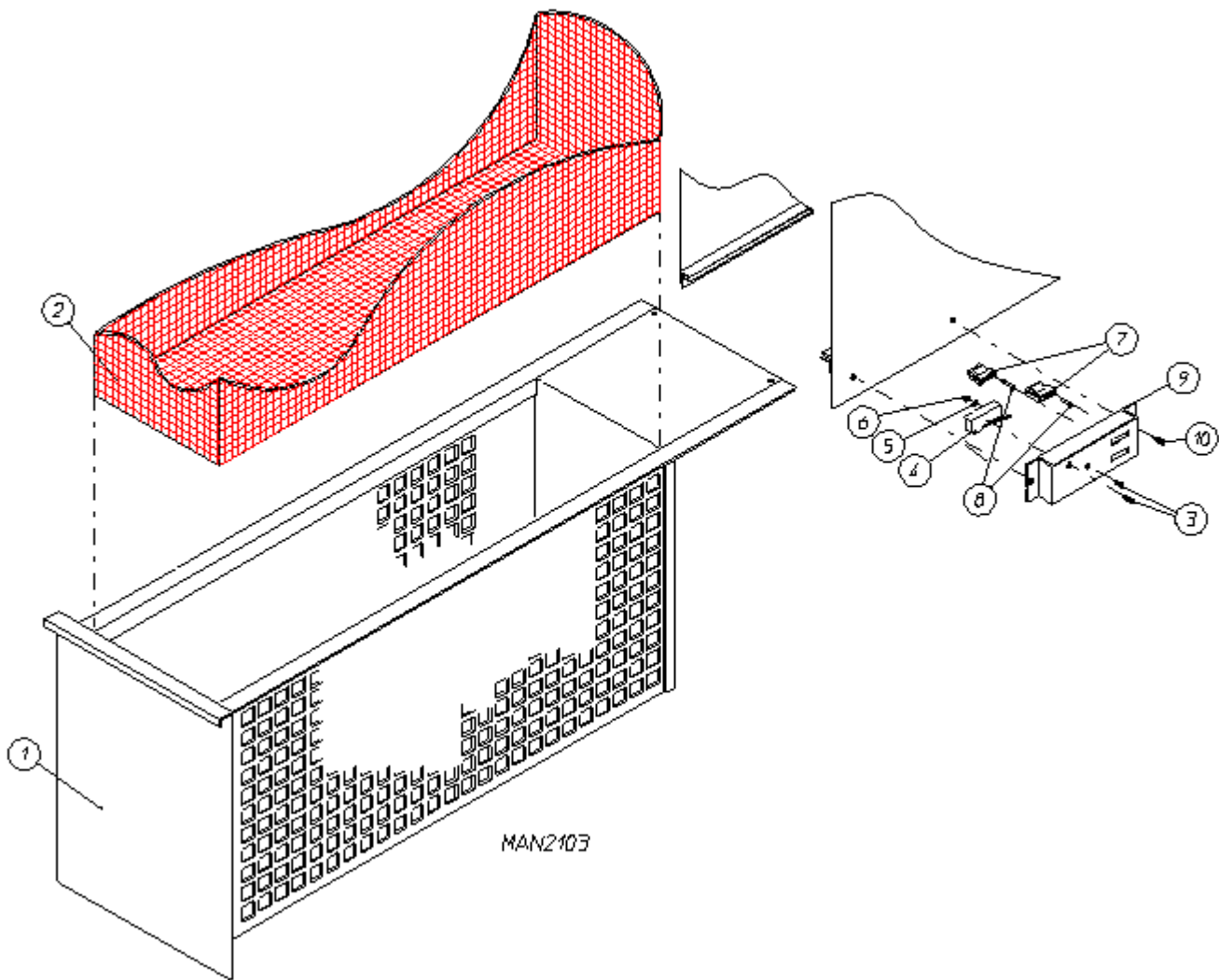
for models mfd. prior to October 24, 1997



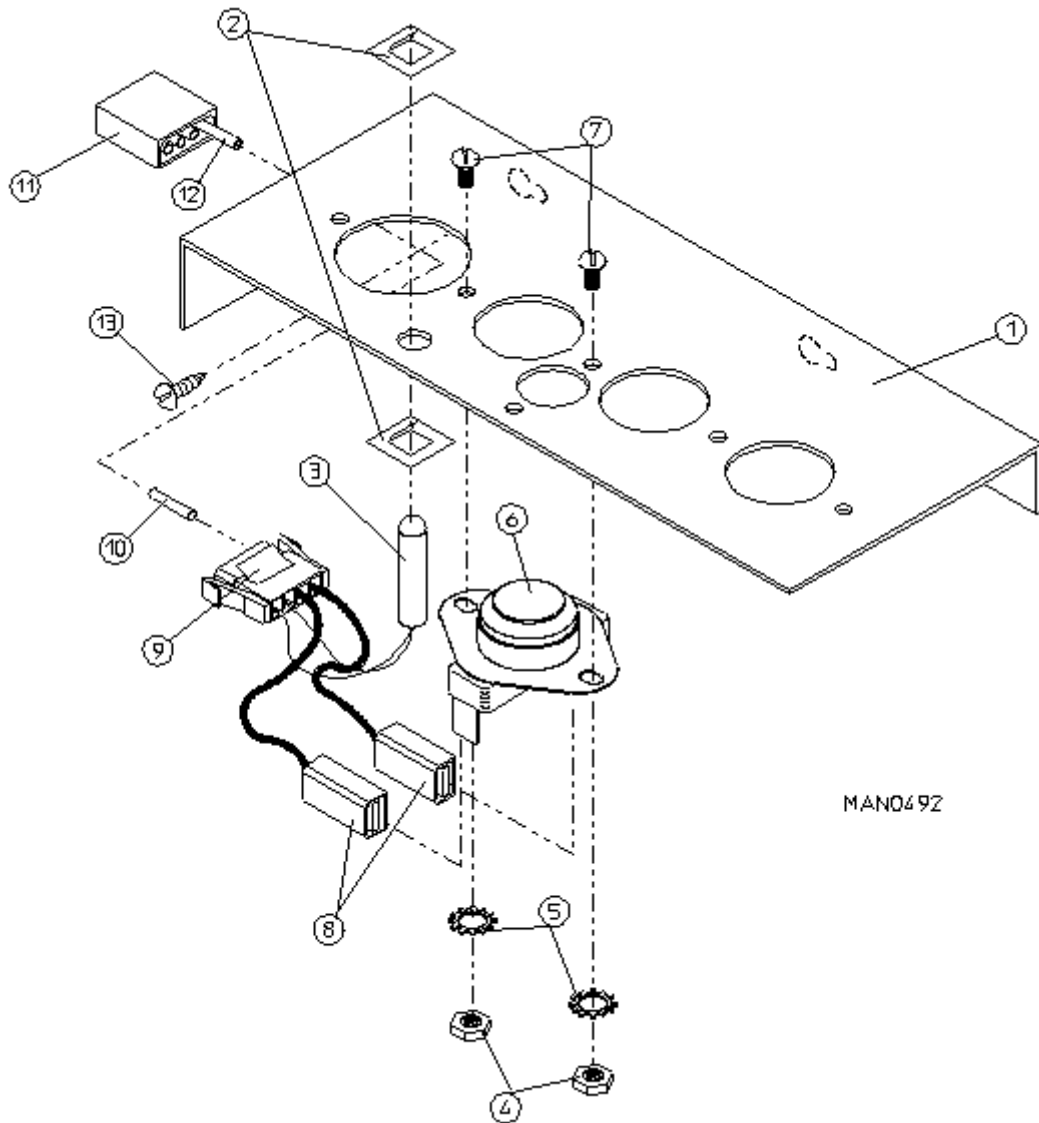
| <u>Illus. No.</u> | <u>Part No.</u> | <u>Qty.</u> | <u>Description</u>   |
|-------------------|-----------------|-------------|--|
| 1                 | 150006          | 2           | #6-32 x 7/8" Phillips Pan Head Machine Screw   |
| 2                 | 152013          | 2           | #6-32 Hex Nut  |
| 3                 | 153010          | 2           | #6 Star Washer   |
| 4                 | 137005          | 1           | Single Pole Door Switch  |
| 5                 | 150301          | 2           | #8-18 x 7/16" Phillips Pan Head TEK Screw  |
| 6                 | 881726          | 1           | White Main Door Switch Housing ONLY  |
|                   | 881727          | 1           | Blue Main Door Switch Housing ONLY   |
|                   | 881698          | 1           | White Main Door Switch with Housing Assembly<br>(includes illus. nos. 1 through 4 and 6) |
|                   | 881699          | 1           | Blue Main Door Switch with Housing Assembly<br>(includes illus. nos. 1 through 4 and 6)  |
| 7                 | 150301          | 4           | #8-18 x 7/16" Phillips Pan Head TEK Screw  |
| 8                 | 881441          | 1           | White Bottom Hinge Block   |
|                   | 881735          | 1           | Blue Bottom Hinge Block  |
| 9                 | 881440          | 1           | White Top Hinge Block  |
|                   | 881736          | 1           | Blue Top Hinge Block   |
| 10                | 153031          | 1           | Nylon Washer   |



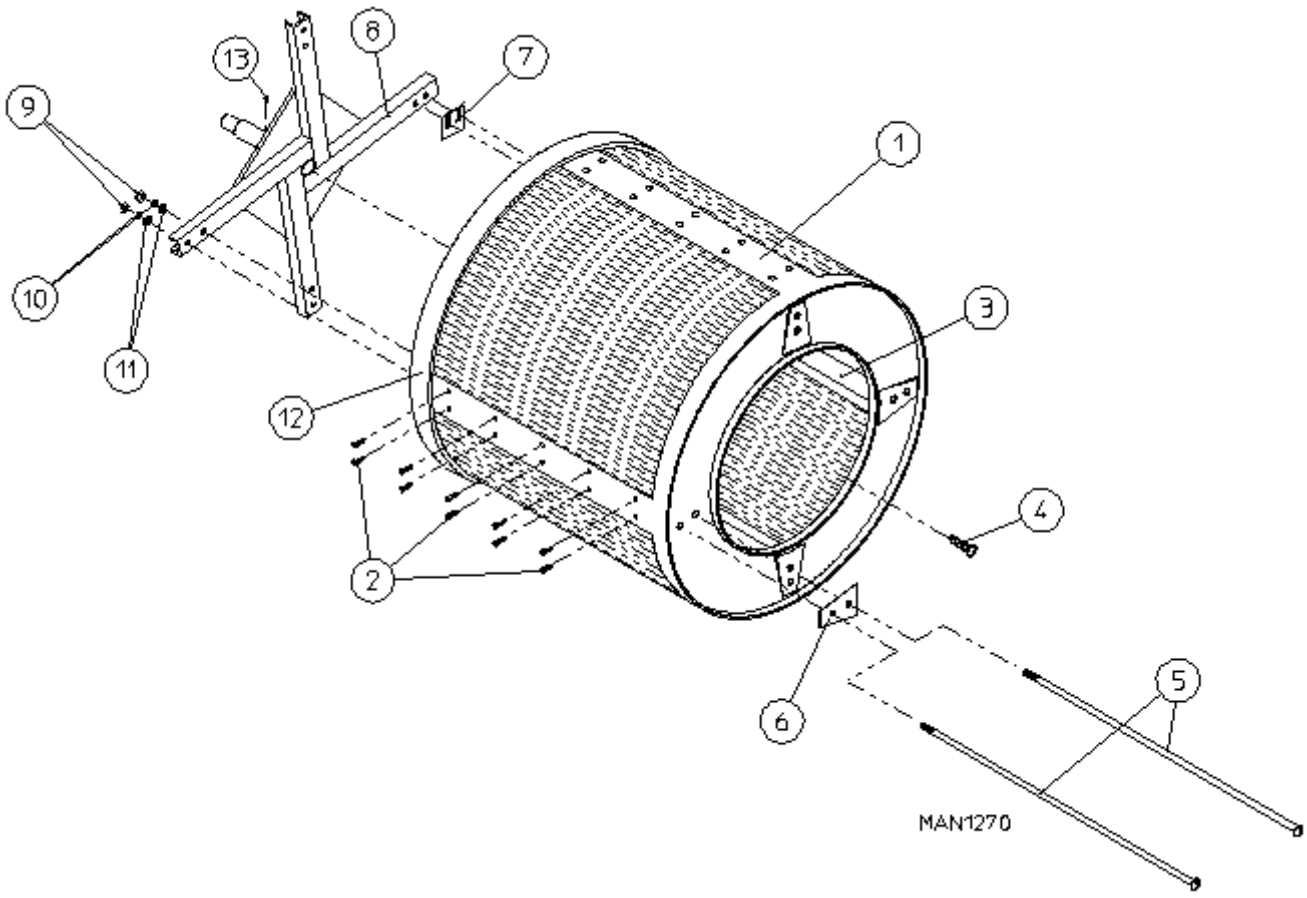
| <u>Illus. No.</u> | <u>Part No.</u> | <u>Qty.</u> | <u>Description</u>  |
|-------------------|-----------------|-------------|---|
| 1                 | 881895          | 1           | White Drop Lint Drawer Assembly<br>(includes illus. nos. 1, 2, and 4) |
|                   | 881896          | 1           | Blue Drop Lint Drawer Assembly<br>(includes illus. nos. 1, 2, and 4)  |
| 2                 | 117605          | 5           | Neoprene Sponge Tape (sold by the foot)                               |
| 3                 | 150309          | 5           | #10-16 x 1/2" Hex Head TEK Crimptite Screw                            |
| 4                 | 117604          | 8           | Neoprene Sponge Tape (sold by the foot)                               |



| <u>Illus. No.</u> | <u>Part No.</u> | <u>Qty.</u> | <u>Description</u>   |
|-------------------|-----------------|-------------|--|
| 1                 | 881899          | 1           | White Lint Drawer Assembly with Safety Switch Actuator                 |
|                   | 881900          | 1           | Blue Drawer Assembly with Safety Switch Actuator                       |
| 2                 | 820017          | 1           | Lint Screen Assembly ONLY  |
| 3                 | 153562          | 2           | #6-32 x 3/4" Clinch Stud   |
| 4                 | 136992          | 1           | Lint Drawer Switch ONLY  |
| 5                 | 153010          | 2           | #6 Star Washer   |
| 6                 | 152000          | 2           | #6-32 Hex Nut  |
| 7                 | 122605          | 2           | 4-Pin Socket Connector ONLY  |
| 8                 | 122701          | 4           | Socket Terminal ONLY   |
|                   | 122801          | 1           | Pin/Extraction Tool  |
| 9                 | 821119          | 1           | Lint Drawer Switch Assembly Complete<br>(includes illus. nos. 3 and 9) |
|                   | 821116          | 1           | Lint Drawer Switch Mounting Bracket Assembly ONLY                      |
| 10                | 150309          | 2           | #10-16 x 1/2" Hex Head TEK Crimpite Screw                              |



| <u>Illus. No.</u> | <u>Part No.</u> | <u>Qty.</u> | <u>Description</u>  |
|-------------------|-----------------|-------------|---|
| 1                 | 820022          | 1           | Temperature Sensor Bracket Assembly Complete<br>(includes illus. nos. 1 through 10) |
|                   | 331295          | 1           | Temperature Sensor Bracket ONLY   |
| 2                 | 154007          | 2           | 1/4" Tinnerman Push-on Fastener   |
| 3                 | 880251          | 1           | 1/4" Temperature Sensor Probe Assembly<br>(includes illus. nos. 2, 3, 8, 9, and 10) |
| 4                 | 152000          | 2           | #6-32 Hex Nut   |
| 5                 | 153010          | 2           | #6 Star Washer  |
| 6                 | 130112          | 1           | 225° Large Automatic Reset Thermostat ONLY  |
| 7                 | 150000          | 2           | #6-32 x 1/4" Round Head Machine Screw   |
| 8                 | 121028          | 2           | Insulated Terminal  |
| 9                 | 122605          | 1           | 4-Pin Socket Connector ONLY   |
| 10                | 122701          | 4           | Socket Terminal ONLY  |
| 11                | 122604          | 1           | 4-Pin Connector ONLY  |
| 12                | 122700          | 4           | Pin Terminal ONLY   |
|                   | 122801          | 1           | Pin/Socket Extraction Tool  |
| 13                | 150301          | 2           | #8-18 x 7/16" Phillips Pan Head Screw   |



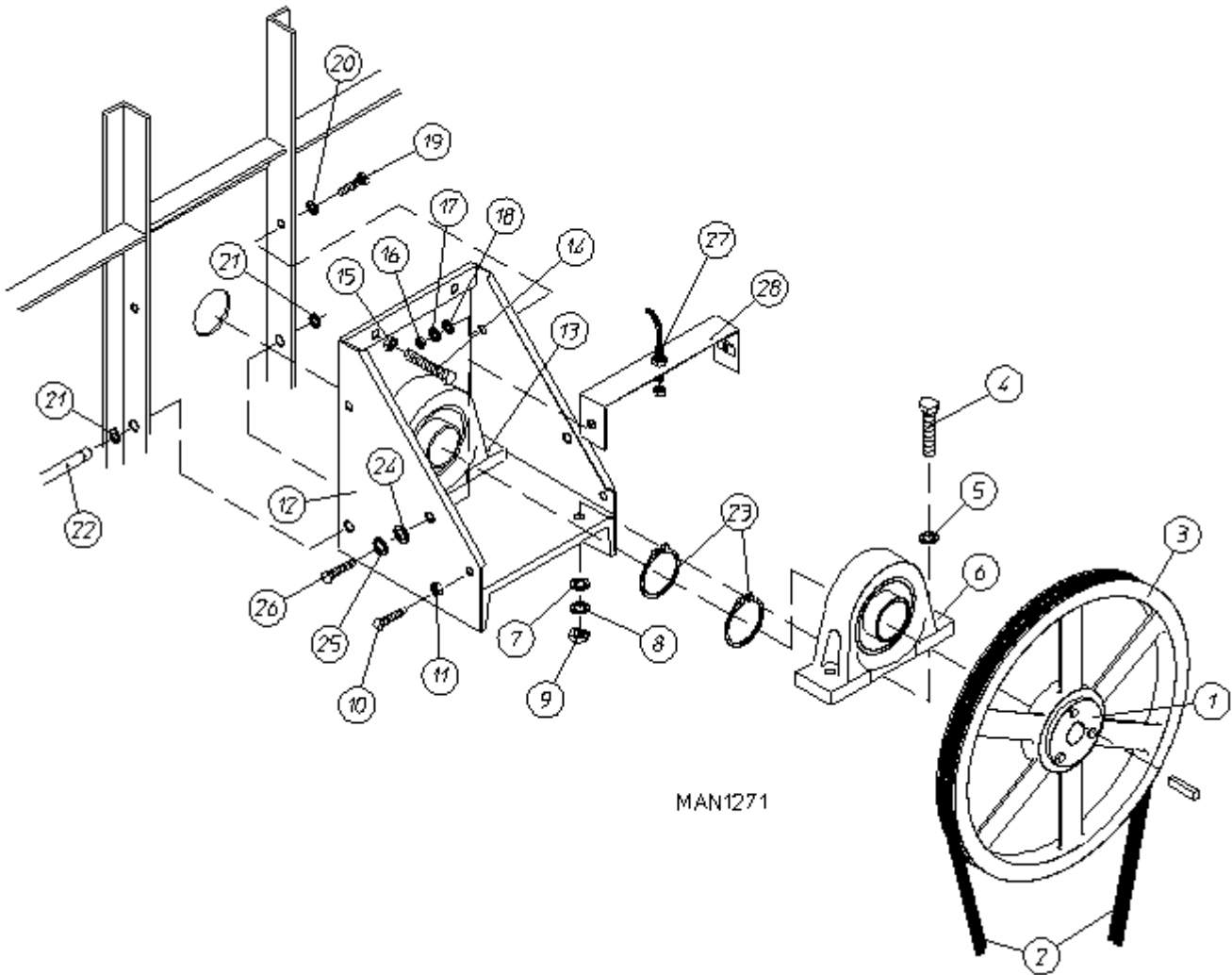


---

| <u>Illus. No.</u> | <u>Part No.</u> | <u>Qty.</u> | <u>Description</u>  |
|-------------------|-----------------|-------------|---|
| 1                 | 820110*         | 1           | Basket (Tumbler) ONLY without Felt Collar   |
|                   | 820052          | 1           | Basket (Tumbler) and Support Assembly Complete with Rotational Sensor Option<br>(includes illus. nos. 1 through 12) |
|                   | 820029          | 1           | Stainless Steel Basket and Support Assembly Complete<br>(includes illus. nos. 1 through 12)                         |
| 2                 | 150309          | 40          | #10-16 x 1/2" Hex Head TEK Crimptite Screw  |
| 3                 | 331105          | 4           | Basket (Tumbler) Rib ONLY   |
| 4                 | 150500          | 1           | 5/16-18 x 3/4" Socket Button Head Screw   |
| 5                 | 100910          | 8           | 1/2-13 x 44" Tie Rod  |
| 6                 | 301700          | 4           | Basket (Tumbler) Reinforcing Plate ONLY   |
| 7                 | 301701          | **          | Basket (Tumbler) Shim ONLY  |
| 8                 | 820116          | 1           | Basket (Tumbler) Support ONLY with Rotational Sensor Option   |
| 9                 | 152011          | 8           | 1/2-13 Hex Nut  |
| 10                | 153026          | 8           | 1/2" Lock Washer  |
| 11                | 153011          | 8           | 9/16" Flat Washer   |
| 12                | 116006          | 1           | Felt Collar ONLY  |
|                   | 401010          | 1           | #847 Adhesive for Felt Collar (5 oz. tube)  |
| 13                | 821002          | 1           | Rotational Magnet Holder Assembly   |

\* Felt collar *is not included* and **must be** ordered separately.

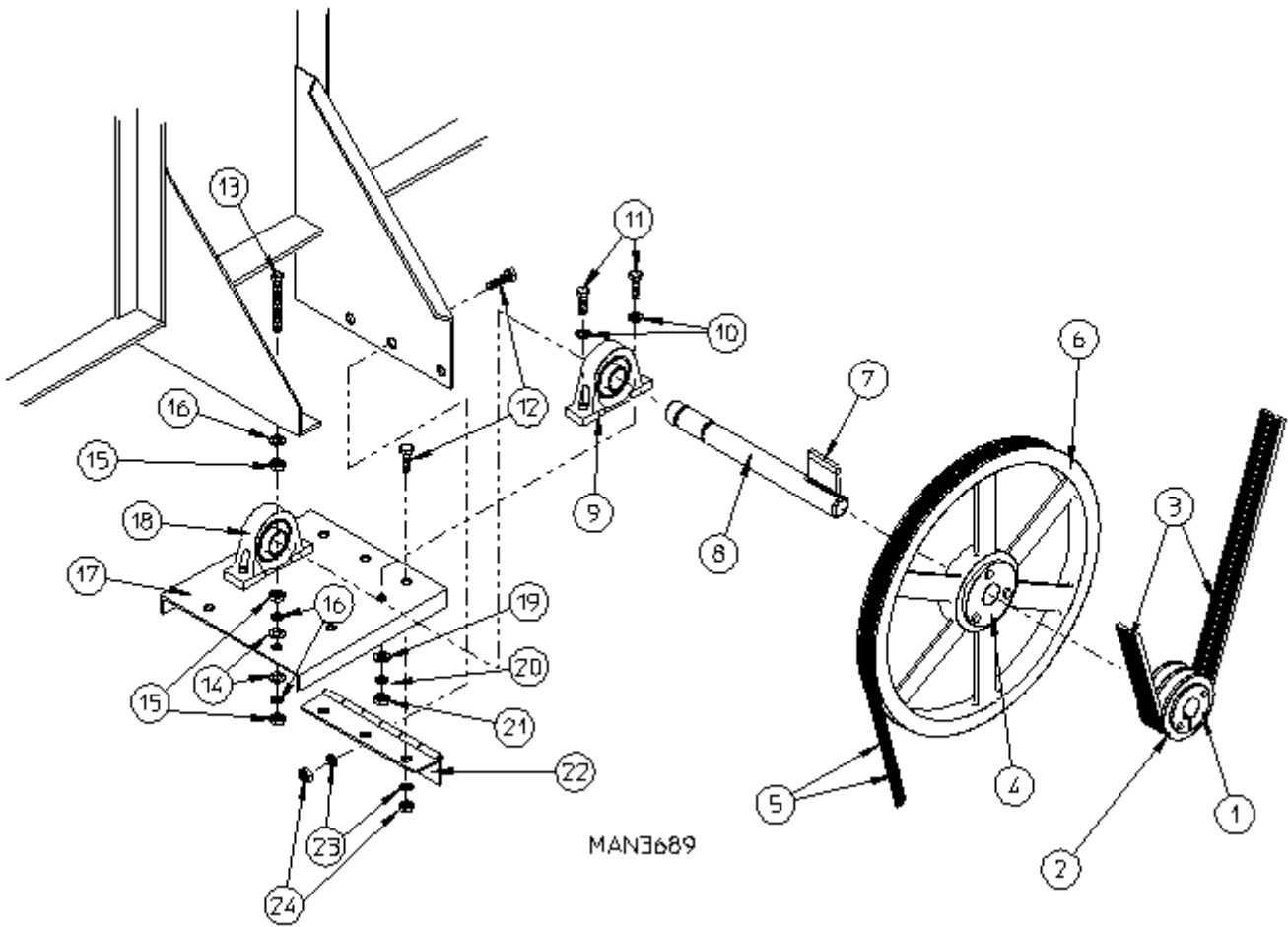
\*\* As required



---

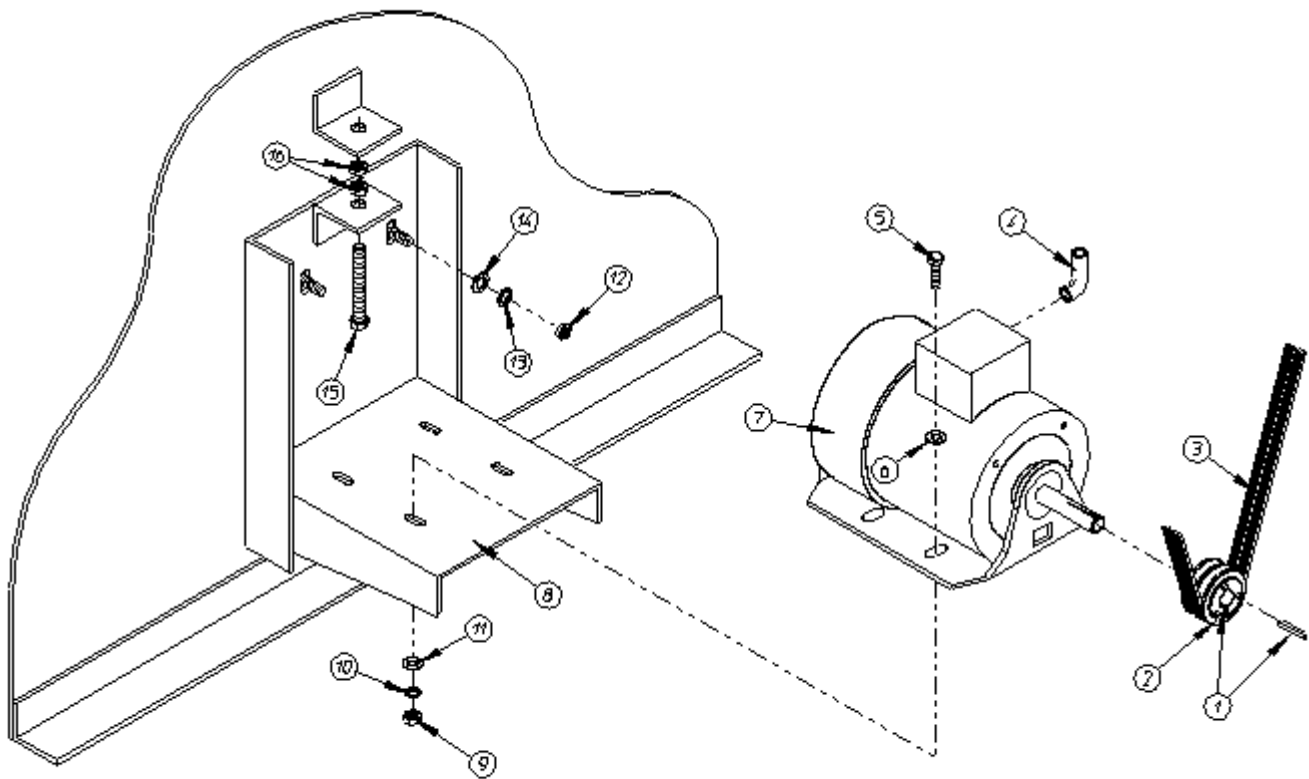
| <u>Illus. No.</u> | <u>Part No.</u> | <u>Qty.</u> | <u>Description</u>  |
|-------------------|-----------------|-------------|---|
| 1                 | 101137          | 1           | 2-1/4" SFX Bushing  |
| 2*                | 100135          | 2           | AP-74 V-Belt  |
| 3                 | 101136          | 1           | 2B x 20" Basket (Tumbler) Pulley                                      |
| 4                 | 150602          | 4           | 5/8-11 x 3" Hex Head Machine Bolt                                     |
| 5                 | 153016          | 4           | 5/8" Flat Washer  |
| 6                 | 880204          | 1           | 2-1/4" Pillow Block Bearing ONLY                                      |
| 7                 | 153016          | 4           | 5/8" Flat Washer  |
| 8                 | 153015          | 4           | 5/8" Lock Washer  |
| 9                 | 152010          | 4           | 5/8-11 Hex Nut  |
| 10                | 150600          | 2           | 3/8-16 x 1-1/2" Hex Head Machine Bolt                                 |
| 11                | 152005          | 2           | 3/8-16 Hex Nut  |
| 12                | 801102          | 1           | Tumbler Bearing Mount Assembly<br>(includes illus. nos. 4 through 13) |
| 13                | 880204          | 1           | 2-1/4" Pillow Block Bearing ONLY                                      |
| 14                | 150604          | 2           | 1/4-20 x 3" Tap Bolt  |
| 15                | 152012          | 2           | 1/4-20 Hex Nut  |
| 16                | 152005          | 2           | 3/8-16 Hex Nut  |
| 17                | 153005          | 2           | 3/8" Lock Washer  |
| 18                | 153004          | 4           | 3/8" Flat Washer  |
| 19                | 150600          | 2           | 3/8-16 x 1-1/2" Hex Head Machine Bolt                                 |
| 20                | 153004          | 2           | 3/8" Flat Washer  |
| 21                | 100801          | 2           | 5/8" Retaining Ring   |
| 22                | 301810          | 1           | 5/8" Hinge Pin  |
| 23                | 100811          | 2           | 2-1/4" Retaining Ring   |
| 24                | 153018          | 2           | 1/4" Flat Washer  |
| 25                | 153007          | 2           | 1/4" Lock Washer  |
| 26                | 150512          | 2           | 1/4-20 x 1/2" Hex Head Machine Bolt                                   |
| 27                | 824807          | 1           | Rotational Sensor Assembly  |
| 28                | 820098          | 1           | Rotational Sensor Mounting Bracket                                    |

\* Replace in matched sets (both belts).



| <u>Illus. No.</u> | <u>Part No.</u> | <u>Qty.</u> | <u>Description</u>   |
|-------------------|-----------------|-------------|--|
| 1                 | 101110          | 1           | 1" Bushing   |
| 2                 | 101113          | 1           | 2A x 3.0 Pulley  |
| 3*                | 100135          | 2           | AP-74 V-Belt   |
| 4                 | 101107          | 1           | 1" SK Bushing  |
| 5*                | 100170          | 2           | 3V-710 Cogged Belt   |
| 6                 | 101112          | 1           | 19" Idler Pulley   |
| 7                 | 100715          | 1           | 1/4" x 1/4" x 4 5/8" Key   |
| 8                 | 301852          | 1           | 1" Idler Shaft ONLY  |
| 9                 | 880205          | 1           | 1" Pillow Block Bearing ONLY   |
| 10                | 153004          | 4           | 3/8" Flat Washer   |
| 11                | 150600          | 4           | 3/8-16 x 1 1/2" Hex Head Machine Bolt  |
| 12                | 150512          | 6           | 1/4-20 x 1/2" Hex Head Machine Bolt  |
| 13                | 150509          | 2           | 5/16-18 x 3" Hex head Machine Bolt   |
| 14                | 153001          | 4           | 5/16" Flat Washer  |
| 15                | 152004          | 6           | 5/16" Hex Nut  |
| 16                | 153002          | 8           | 5/16" Lock Washer  |
| 17                | 801001          | 1           | Idler Bearing Mount Assembly Complete<br>(includes illus. nos. 8 through 11 and 17 through 25) |
|                   | 311401          | 1           | Idler Bearing Mount ONLY   |
| 18                | 880205          | 1           | 1" Pillow Block Bearing ONLY   |
| 19                | 153004          | 4           | 3/8" Flat Washer   |
| 20                | 153005          | 4           | 3/8" Lock Washer   |
| 21                | 152005          | 4           | 3/8-16 Hex Nut   |
| 22                | 103005          | 1           | Idler Adjustment Hinge ONLY  |
| 23                | 153007          | 6           | 1/4" Lock Washer   |
| 24                | 152002          | 6           | 1/4-20 Hex Nut   |

\* Replace in matched sets (both belts).



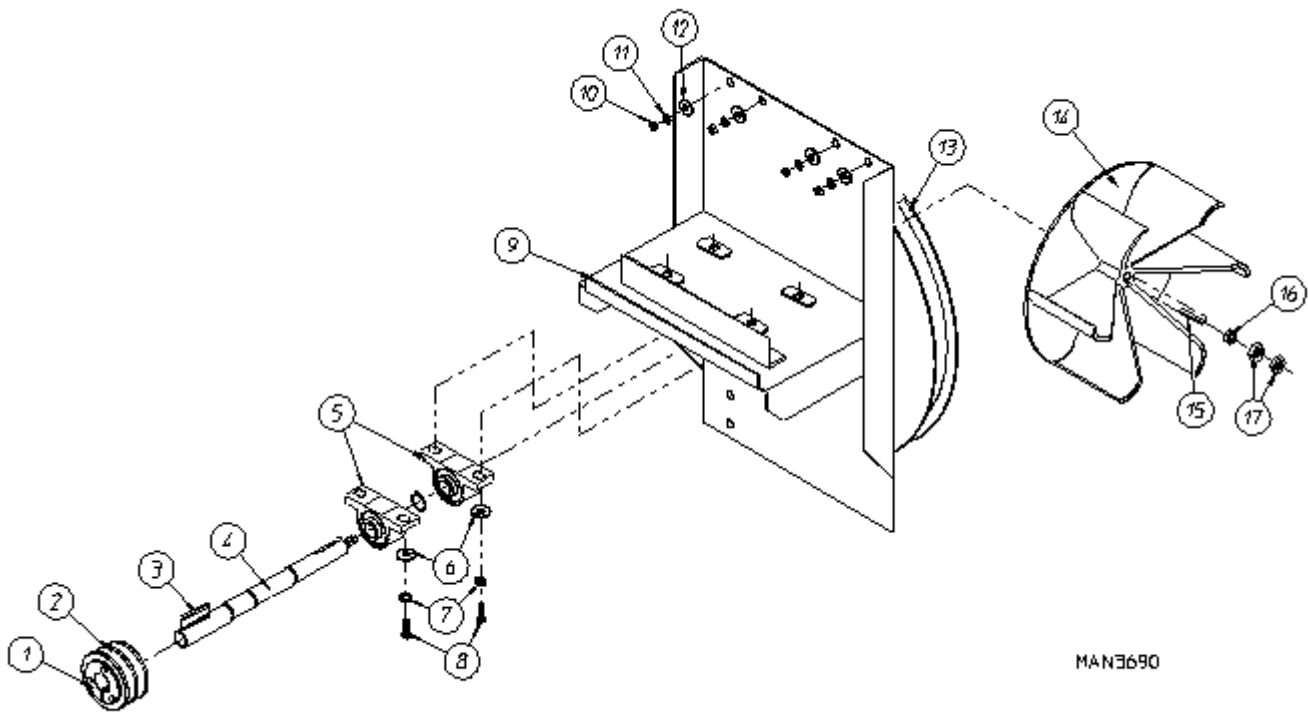
MAN0329

| <u>Illus. No.</u> | <u>Part No.</u> | <u>Qty.</u> | <u>Description</u>   |
|-------------------|-----------------|-------------|--|
| 1                 | 101121          | 1           | 5/8" SK Bushing  |
| 2                 | 101114          | 1           | 2.65" Pulley<br>(for 60 Hz Models Only)  |
|                   | 101120          | 1           | 3.15" Pulley<br>(for 50 Hz Models Only)  |
| 3*                | 100170          | 2           | 3V-710 Cogged Belt<br>(for 60 Hz Models Only)  |
|                   | 100155          | 2           | AP-74 V-Belt<br>(for 50 Hz Models Only)  |
| 4                 | 120200          | 1           | 3/8" x 90° Connector   |
| 5                 | 150501          | 4           | 5/16-18 x 3/4" Hex Head Machine Bolt   |
| 6                 | 153001          | 4           | 5/16" Flat Washer  |
| 7                 | 100029          | 1           | 3/4 HP 208/230/460v 3ø 50/60 Hz and 380v 3ø 50 Hz T.E.F.C. Motor<br>(56Z Frame)  |
|                   | 100084          | 1           | 3/4 HP 380v 3ø 60 Hz T.E.F.C. Motor (56Z Frame)  |
| 8                 | 800952          | 1           | Basket (Tumbler) Motor Mount ONLY (56Z Frame)  |
|                   | 800953**        | 1           | 3/4 HP 208/230/460v 3ø 60 Hz Basket Motor Mount Assembly Complete<br>(includes illus. nos. 1, 2, 5, 7, 10, 11, 12, 15, and 16) |
|                   | 800955**        | 1           | 3/4 HP 208/230/380/460v 3ø 50 Hz Motor Mount Assembly Complete<br>(includes illus. nos. 1, 2, 5, 7, 10, 11, 12, 15, and 16)    |
| 9                 | 152004          | 4           | 5/16-18 Hex Nut  |
| 10                | 153002          | 4           | 5/16" Lock Washer  |
| 11                | 153001          | 4           | 5/16" Flat Washer  |
| 12                | 152004          | 4           | 5/16-18 Hex Nut  |
| 13                | 153002          | 4           | 5/16" Lock Washer  |
| 14                | 153001          | 4           | 5/16" Flat Washer  |
| 15                | 150619          | 1           | 3/8-16 x 3" Hex Head Machine Bolt  |
| 16                | 152005          | 2           | 3/8-16 Hex Nut   |

\* Replace in matched sets (both belts).

\*\* Specify voltage when ordering.

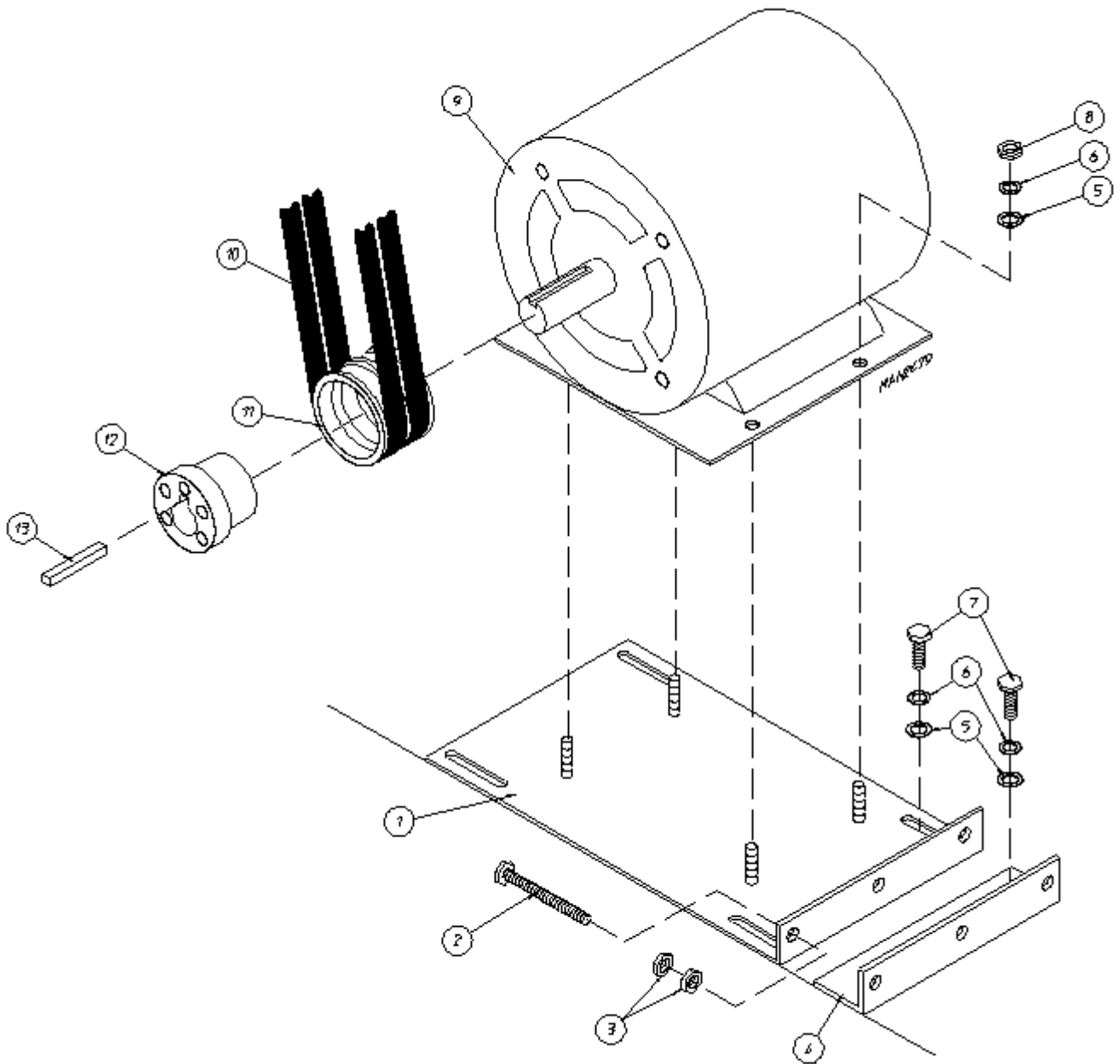
**IMPORTANT:** For voltages higher than 460 VAC, contact the factory for correct part number of motor mount assembly.



0969NAM



| <u>Illus. No.</u> | <u>Part No.</u> | <u>Qty.</u> | <u>Description</u>   |
|-------------------|-----------------|-------------|--|
| 1                 | 101194          | 1           | SDS x 1-3/8" Bushing<br>(for 60 Hz Models Only)  |
|                   | 101152          | 1           | SH x 1-3/8" Bushing<br>(for 50 Hz Models Only)   |
| 2                 | 101147          | 1           | 2B x 4.8 Pulley<br>(for 60 Hz Models Only)   |
|                   | 101148          | 1           | 2B x 4.0 Pulley<br>(for 50 Hz Models Only)   |
| 3                 | 100706          | 1           | 5/16" x 5/16" x 1-3/8" Key   |
| 4                 | 317400          | 1           | Impellor (Fan/Blower) Shaft  |
| 5                 | 880879          | 2           | 1-3/8" Pillow Block Bearing with Set Screws and Grease Fitting   |
|                   | 154326          | 4           | 5/16 x 3/8" Allen Set Screw ONLY   |
|                   | 170512          | 2           | 1/4-28 N.P.T. Grease Fitting ONLY  |
| 6                 | 153004          | 4           | 3/8" Flat Washer   |
| 7                 | 153005          | 4           | 3/8" Lock Washer   |
| 8                 | 150600          | 4           | 3/8-16 x 1-1/2" Hex Head Machine Bolt  |
| 9                 | 813002          | 1           | Impellor/Fan Shaft Mount ONLY  |
|                   | 813023          | 1           | Impellor/Fan Assembly Complete<br>(includes illus. nos. 1, 2, 3, 6, 7 through 10 and 15 through 18)<br>For 60 Hz Models ONLY |
|                   | 813024          | 1           | Impellor/Fan Assembly Complete<br>(includes illus. nos. 1, 2, 3, 6, 7 through 10 and 15 through 18)<br>For 50 Hz Models ONLY |
| 10                | 152005          | 8           | 3/8-16 Hex Nut   |
| 11                | 153005          | 8           | 3/8" Lock Washer   |
| 12                | 153004          | 8           | 3/8" Flat Washer   |
| 13                | 116014          | 1           | 3" x 3" Fan (Impellor/Blower) Gasket   |
|                   | 117604          | 4           | Neoprene Sponge Tape (sold by the foot)  |
| 14                | 100603          | 1           | 16" Impellor (Fan/Blower) with 3/4" Bore   |
| 15                | 100714          | 1           | 3/16" x 3/16" x 1 7/8" Key   |
| 16                | 153065          | 1           | Fan Washer   |
| 17                | 152006          | 2           | 1/2-20 Left Hand Jam Nut   |

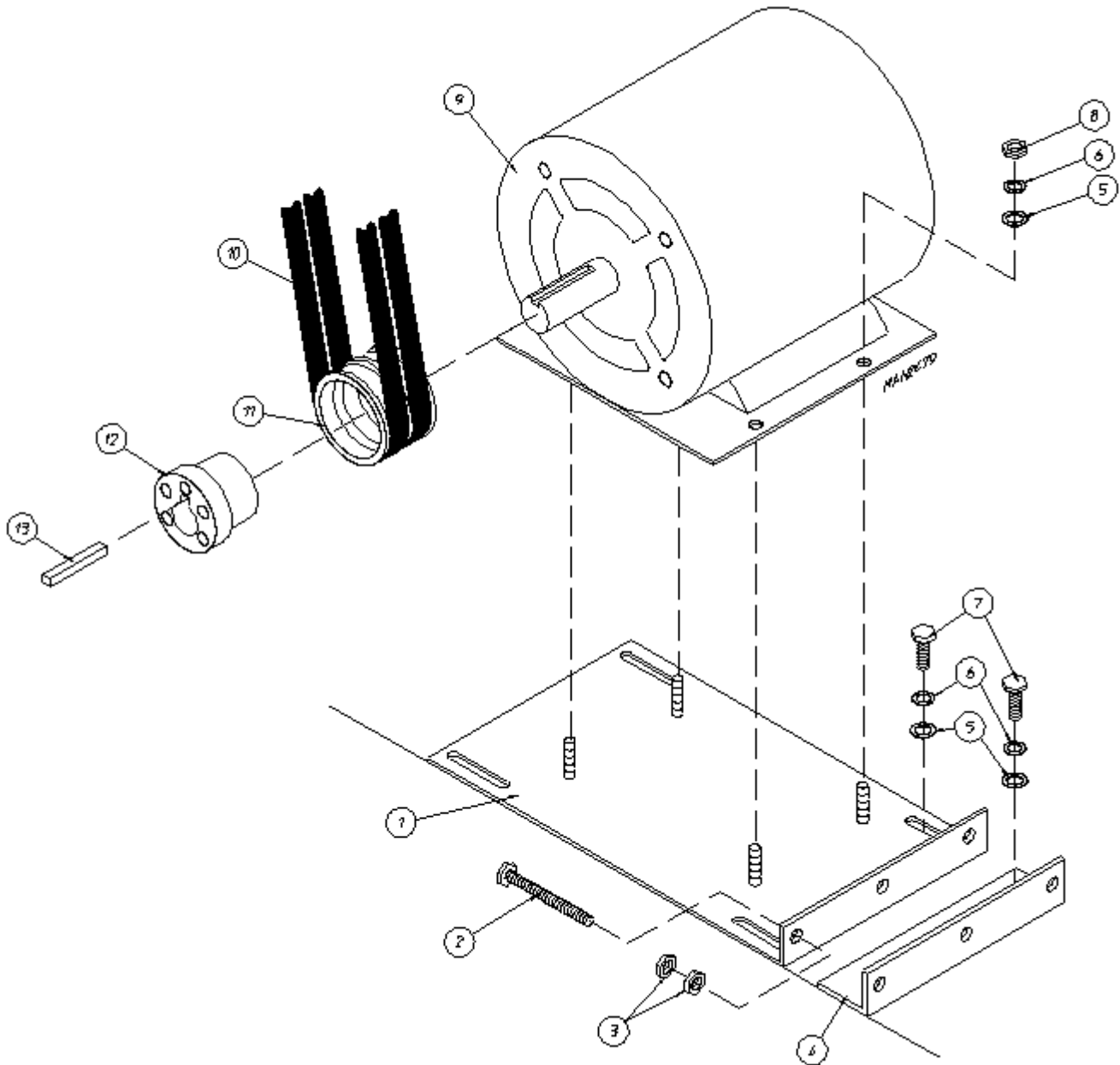


**for Gas Models ONLY**

| <u>Illus. No.</u> | <u>Part No.</u> | <u>Qty.</u> | <u>Description</u>   |
|-------------------|-----------------|-------------|--|
| 1                 | 802253          | 1           | Adjustable Plate Assembly  |
|                   | 813025          | 1           | Blower Motor Mount Assembly Complete<br>(includes illus. nos. 1 through 9 and 11 through 13)<br><i>For 208-230/460 volt - 60 Hz models ONLY</i><br><i>For 380/416 volt - 50 Hz models ONLY</i> |
| 2                 | 152034          | 2           | 3/8-16 x 3-1/2" Hex Head Bolt  |
| 3                 | 152005          | 4           | 3/8-16 Hex Nut   |
| 4                 | 802232          | 1           | Adjustable Angle Assembly  |
| 5                 | 153001          | 11          | 5/16" Flat Washer  |
| 6                 | 153002          | 11          | 5/16" Lock Washer  |
| 7                 | 150501          | 7           | 5/16-18 x 3/4" Hex Head Machine Bolt   |
| 8                 | 152004          | 4           | 5/16-18 Hex Nut  |
| 9                 | 100043          | 1           | 3 HP Blower Motor<br><i>For 208-230/460 volt - 60 Hz models ONLY</i><br><i>For 380/416 volt - 50 Hz models ONLY</i>  |
| 10*               | 100169          | 2           | 5L-350 V-Belt  |
| 11                | 101135          | 1           | 2B x 5.4 Motor Pulley  |
| 12                | 101138          | 1           | SDS x 1-1/8" Bore Bushing  |
| 13                | 100706          | 1           | 5/16" x 5/16" x 1-3/8" Key   |

\* Replace in matched sets (both belts)

for Electric Models ONLY

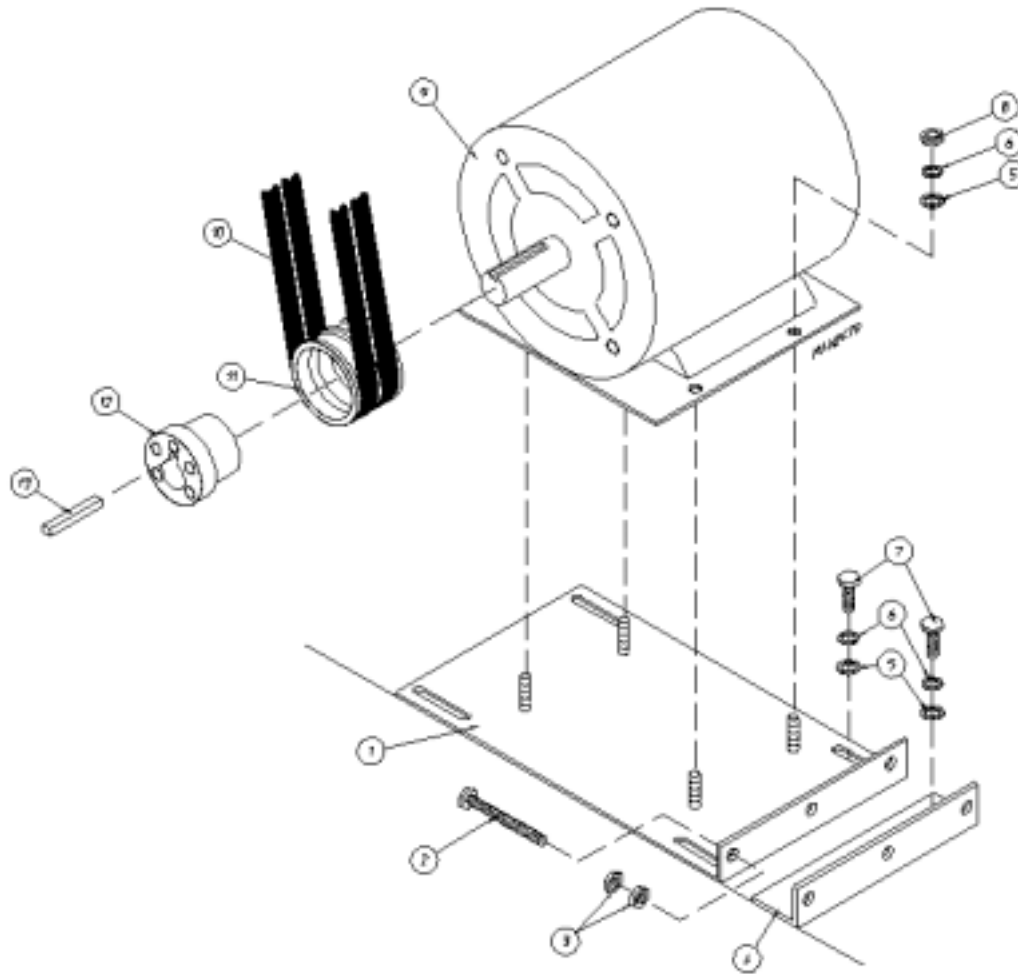


**for Electric Models ONLY**

| <u>Illus. No.</u> | <u>Part No.</u> | <u>Qty.</u> | <u>Description</u>  |
|-------------------|-----------------|-------------|---|
| 1                 | 802253          | 1           | Adjustable Plate Assembly   |
|                   | 813025          | 1           | 72 Kw Electric Blower Motor Mount Assembly Complete<br>(includes illus. nos. 1 through 9 and 11 through 13)<br><i>For 208-230/460 volt - 60 Hz models ONLY</i><br><i>For 380/416 volt - 50 Hz models ONLY</i> |
|                   | 813027          | 1           | 80 Kw Electric Blower Motor Mount Assembly Complete<br>(includes illus. nos. 1 through 9 and 11 through 13)<br><i>For 208-230/460 volt - 60 Hz models ONLY</i><br><i>For 380/416 volt - 50 Hz models ONLY</i> |
| 2                 | 152034          | 2           | 3/8-16 x 3-1/2" Hex Head Bolt   |
| 3                 | 152005          | 4           | 3/8-16 Hex Nut  |
| 4                 | 802232          | 1           | Adjustable Angle Assembly   |
| 5                 | 153001          | 11          | 5/16" Flat Washer   |
| 6                 | 153002          | 11          | 5/16" Lock Washer   |
| 7                 | 150501          | 7           | 5/16-18 x 3/4" Hex Head Machine Bolt  |
| 8                 | 152004          | 4           | 5/16-18 Hex Nut   |
| 9                 | 100043          | 1           | 3 HP Blower Motor<br><i>For 208-230/460 volt - 60 Hz models ONLY</i><br><i>For 380/416 volt - 50 Hz models ONLY</i>   |
| 10*               | 100169          | 2           | 5L-350 V-Belt<br>(for 72 Kw Electric Oven Only)   |
|                   | 100168          | 2           | 5L-360 V-Belt<br>(for 80 Kw Electric Oven Only)   |
| 11                | 101135          | 1           | 2B x 5.4 Motor Pulley<br>(for 72 Kw Electric Oven Only)   |
|                   | 101185          | 1           | 2B x 6.2 Motor Pulley<br>(for 80 Kw Electric Oven Only)   |
| 12                | 101138          | 1           | SDS x 1-1/8" Bore Bushing   |
| 13                | 100706          | 1           | 5/16" x 5/16" x 1-3/8" Key  |

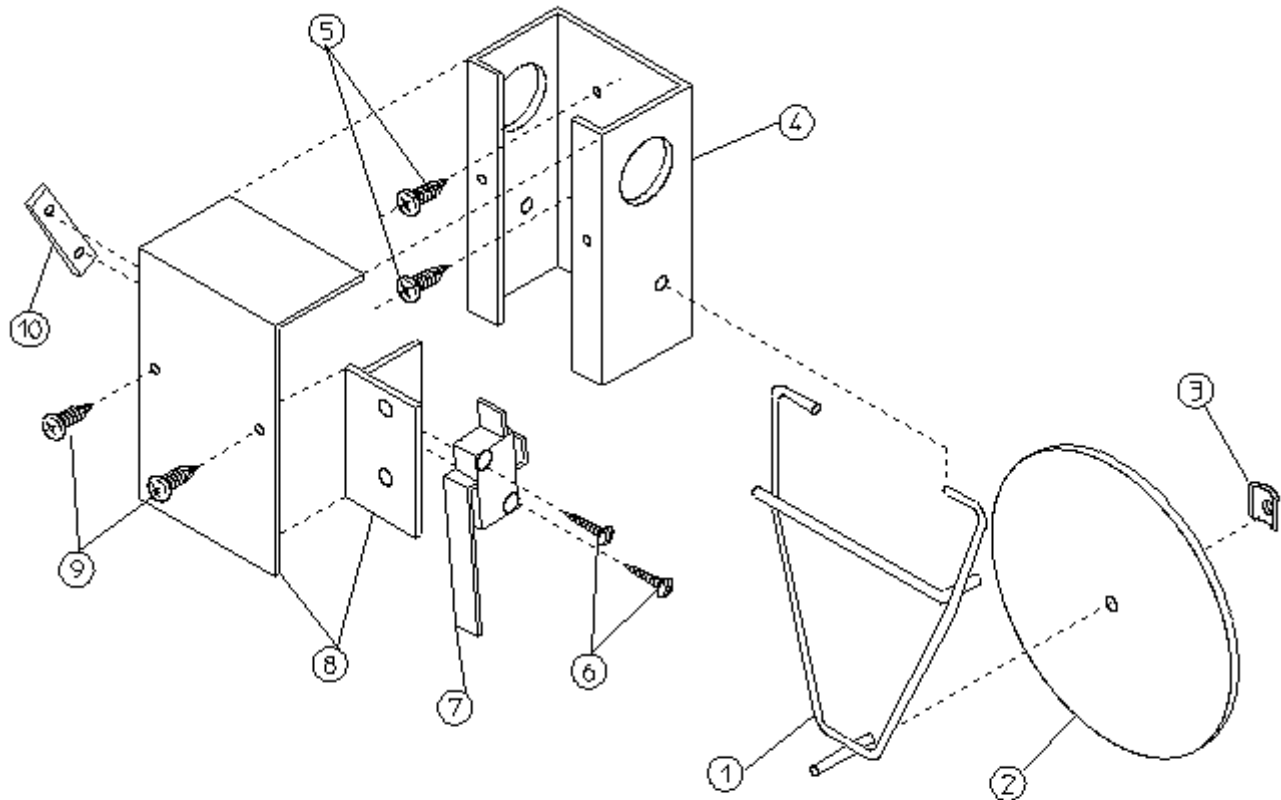
\* Replace in matched sets (both belts)

for Steam Models ONLY



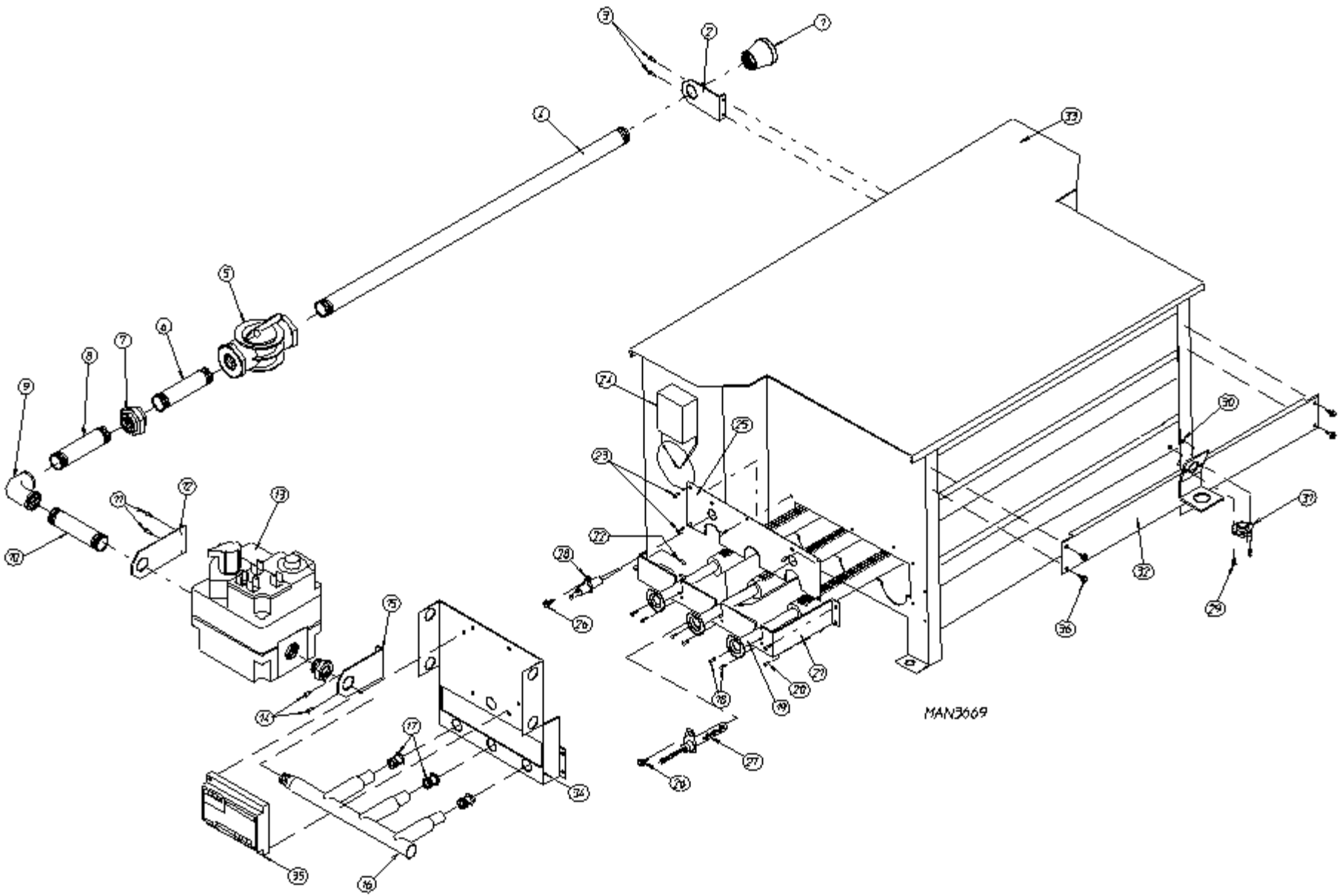
| Illus. No. | Part No. | Qty. | Description  |
|------------|----------|------|--|
| 1          | 802253   | 1    | Adjustable Plate Assembly  |
|            | 813026   | 1    | Blower Motor Mount Assembly Complete<br>(includes illus. nos. 1 through 9 and 11 through 13)<br><i>For 208-230/460 volt - 60 Hz models ONLY</i><br><i>For 380/416 volt - 50 Hz models ONLY</i> |
| 2          | 152034   | 2    | 3/8-16 x 3-1/2" Hex Head Bolt  |
| 3          | 152005   | 4    | 3/8-16 Hex Nut   |
| 4          | 802232   | 1    | Adjustable Angle Assembly  |
| 5          | 153001   | 11   | 5/16" Flat Washer  |
| 6          | 153002   | 11   | 5/16" Lock Washer  |
| 7          | 150501   | 7    | 5/16-18 x 3/4" Hex Head Machine Bolt   |
| 8          | 152004   | 4    | 5/16-18 Hex Nut  |
| 9          | 100043   | 1    | 3 HP Blower Motor<br><i>For 208-230/460 volt - 60 Hz models ONLY</i><br><i>For 380/416 volt - 50 Hz models ONLY</i>  |
| 10*        | 100168   | 2    | 5L-360 V-Belt  |
| 11         | 101185   | 1    | 2B x 6.2 Motor Pulley  |
| 12         | 101138   | 1    | SDS x 1-1/8" Bore Bushing  |
| 13         | 100706   | 1    | 5/16" x 5/16" x 1-3/8" Key   |

\* Replace in matched sets (both belts)



MAN0440

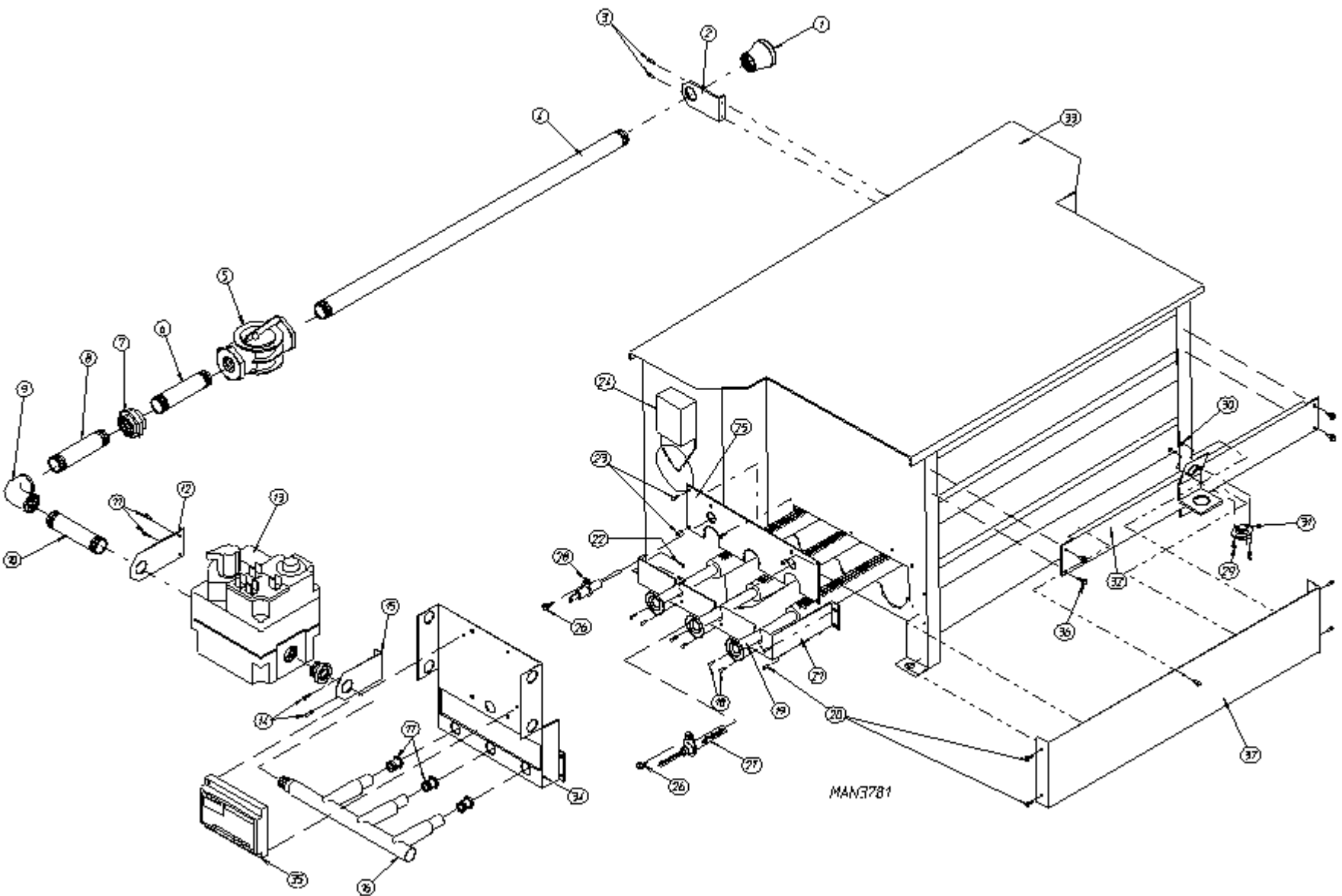
| <u>Illus. No.</u> | <u>Part No.</u> | <u>Qty.</u> | <u>Description</u>   |
|-------------------|-----------------|-------------|--|
| 1                 | 105500          | 1           | Sail Switch Actuator Rod   |
| 2                 | 319202          | 1           | Sail Switch Damper (Flat)  |
| 3                 | 154002          | 1           | 1/8" Push-on Fastener  |
| 4                 | 802800          | 1           | Sail Switch Box Cover and Bracket ONLY   |
|                   | 802801          | 1           | Sail Switch Box Assembly Complete<br>(includes illus. nos. 1 through 4 and 6 through 10) |
| 5                 | 150309          | 2           | #10-16 x 1/2" Hex Head TEK Crimptite Screw   |
| 6                 | 150303          | 2           | #4 x 3/4" Pan Head "A" Machine Screw   |
| 7                 | 122200          | 1           | Sail Switch ONLY   |
| 8                 | 802799          | 1           | Sail Switch Box Cover and Bracket ONLY   |
| 9                 | 150309          | 2           | #10-16 x 1/2" Phillips Round Head Screw  |
| 10                | 154004          | 1           | Twin Speed Nut   |





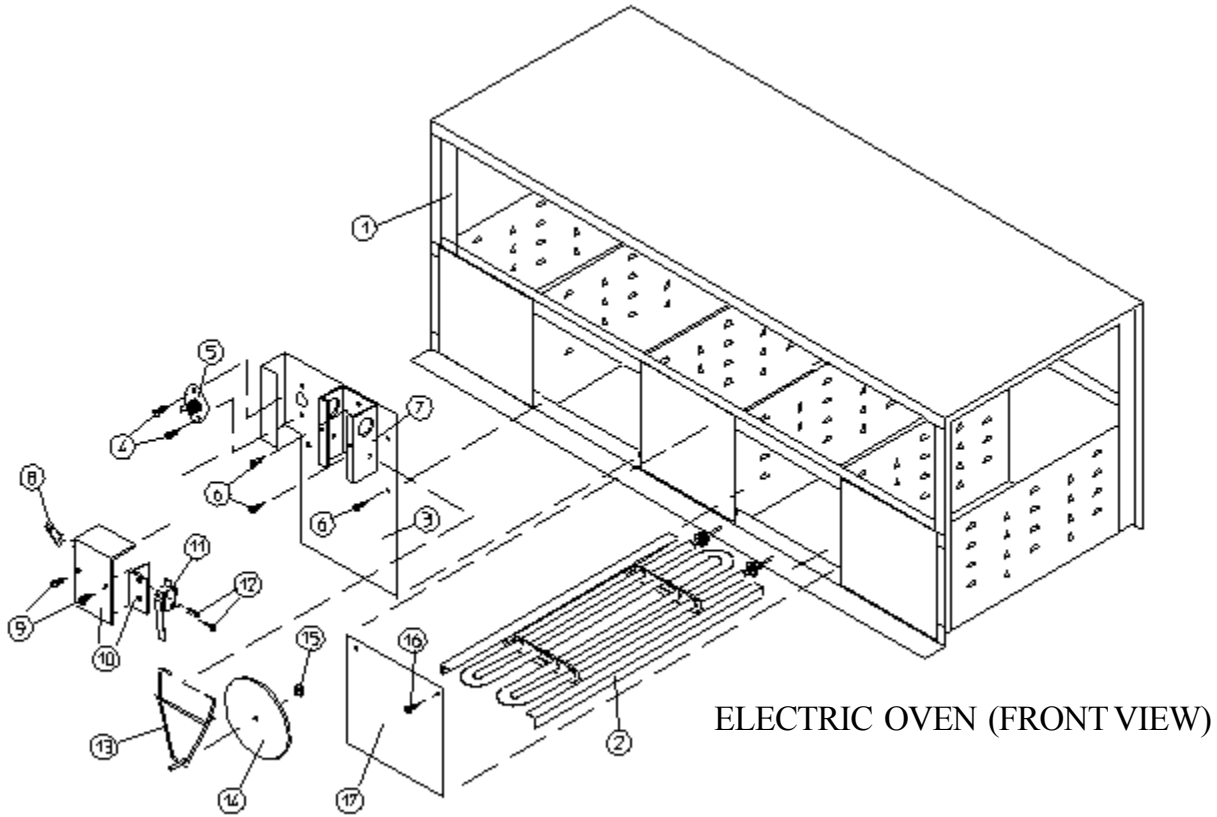
| <u>Illus. No.</u> | <u>Part No.</u> | <u>Qty.</u> | <u>Description</u>  |
|-------------------|-----------------|-------------|---|
| 1                 | 142924          | 1           | 1" to 3/4" Reducing Coupling  |
| 2                 | 331291          | 1           | Pipe Bracket  |
| 3                 | 150309          | 2           | #10-16 x 1/2" Hex Head TEK Crimptite Screw  |
| 4                 | 142829          | 1           | 3/4" x 20" Nipple   |
| 5                 | 141300          | 1           | 3/4" Union Shut-Off   |
| 6                 | 142701          | 1           | 3/4" Closed Nipple  |
| 7                 | 142601          | 1           | 3/4" Union  |
| 8                 | 142710          | 1           | 3/4" x 4" Nipple  |
| 9                 | 142504          | 1           | 3/4" x 90° Elbow  |
| 10                | 142734          | 1           | 3/4" x 5-1/2" Nipple  |
| 11                | 390125          | 1           | Pipe Bracket  |
| 12                | 150309          | 2           | #10-16 x 1/2" Hex Head TEK Crimptite Screw  |
| 13                | 140026          | 1           | 3/4" 24 VAC Redundant (natural gas) Gas Valve   |
| 14                | 150309          | 2           | #10-16 x 1/2" Hex Head TEK Crimptite Screw  |
| 15                | 331291          | 1           | Pipe Bracket  |
| 16                | 141208          | 1           | 3-Port Manifold   |
| 17*               | 140832          | 3           | #4 Burner Orifice (natural gas) ONLY  |
| 18                | 150309          | 4           | #10-16 x 1/2" Hex Head TEK Crimptite Screw  |
| 19                | 141110          | 3           | Burner Tube ONLY  |
| 20                | 150309          | 6           | #10-16 x 1/2" Hex Head TEK Crimptite Screw  |
| 21                | 331287          | 1           | Burner Tube Support ONLY  |
| 22                | 150309          | 2           | #10-16 x 1/2" Hex Head TEK Crimptite Screw  |
| 23                | 150309          | 6           | #10-16 x 1/2" Hex Head TEK Crimptite Screw  |
| 24                | -----           | 1           | Sail Switch<br>(refer to <b>Sail Switch Assembly</b> on <b>page 29</b> )  |
| 25                | 390098          | 1           | Burner Box Cover Plate ONLY   |
| 26                | 150309          | 2           | #10-16 x 1/2" Hex Head TEK Crimptite Screw  |
| 27                | 881597          | 1           | Hot Surface Ignition (HSI) Ignitor  |
| 28                | 128921          | 1           | HSI Flame Sensor  |
| 29                | 150001          | 2           | #6-32 x 1/2" Phillips Round Head Machine Screw  |
| 30                | 151000          | 2           | #6-32 Pal Nut   |
| 31                | 130201          | 1           | 330° Small Manual/Reset Thermostat ONLY<br>(for models mfd. as of May 26, 1998)   |
|                   | 130401          | 1           | 330° Hi-Limit ONLY<br>(for models mfd. prior to May 26, 1998)   |
| 32                | 821457          | 1           | Hi-Limit Bracket  |
| 33                | 881874*         | 1           | HSI Natural Gas Burner Assembly Complete<br>(includes illus. nos 1 through 36)<br>For models mfd. with Natural Gas ONLY |
|                   | 820872          | 1           | Burner Box ONLY   |
| 34                | 335031          | 1           | Hot Surface Ignition (HSI) Module Mounting Bracket/Manifold Rest  |
| 35                | 881797          | 1           | HSI (Hot Surface Ignition) Module II  |
| 36                | 150309          | 2           | #10-16 x 1/2" Hex Head TEK Crimptite Screw  |

\* Consult factory for elevations over 2,000 feet.



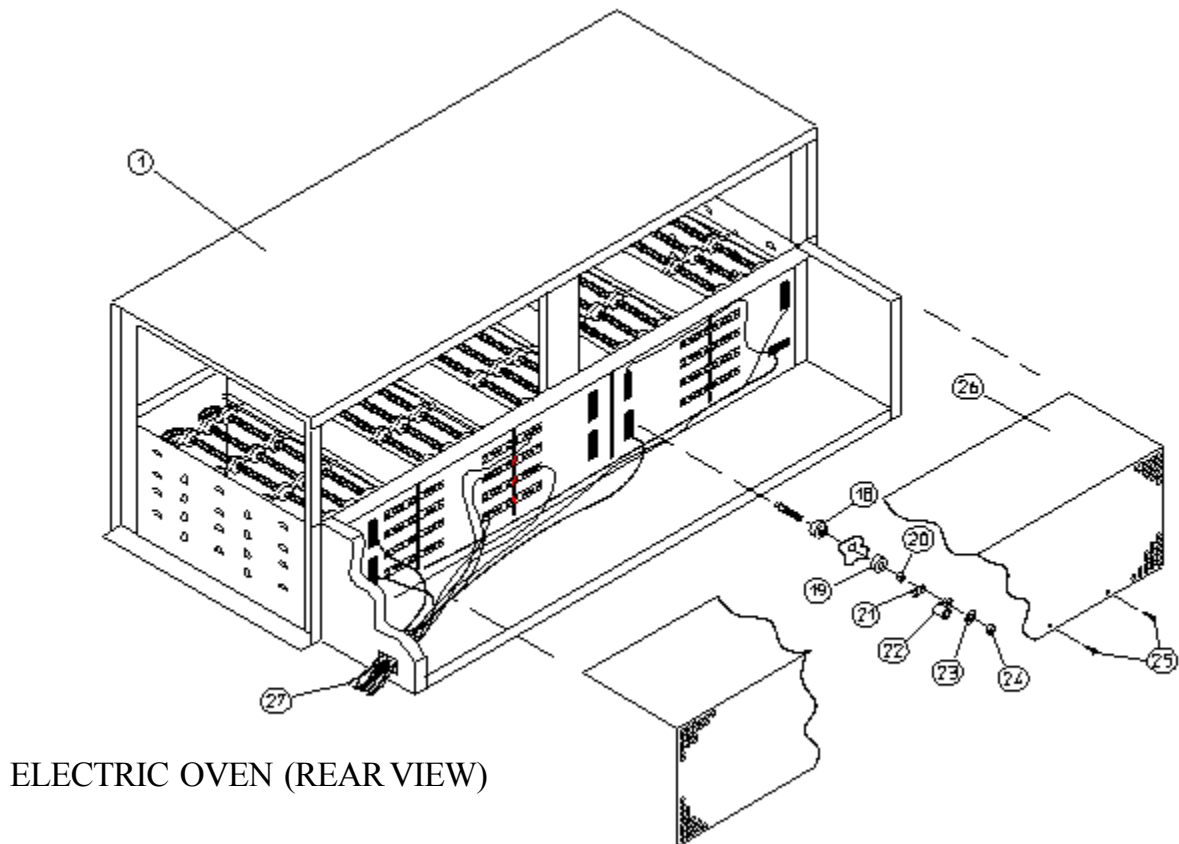
| <u>Illus. No.</u> | <u>Part No.</u> | <u>Qty.</u> | <u>Description</u>  |
|-------------------|-----------------|-------------|---|
| 1                 | 142924          | 1           | 1" to 3/4" Reducing Coupling  |
| 2                 | 331291          | 1           | Pipe Bracket  |
| 3                 | 150309          | 2           | #10-16 x 1/2" Hex Head TEK Crimptite Screw  |
| 4                 | 142829          | 1           | 3/4" x 20" Nipple   |
| 5                 | 141300          | 1           | 3/4" Union Shut-Off   |
| 6                 | 142701          | 1           | 3/4" Closed Nipple  |
| 7                 | 142601          | 1           | 3/4" Union  |
| 8                 | 142710          | 1           | 3/4" x 4" Nipple  |
| 9                 | 142504          | 1           | 3/4" x 90° Elbow  |
| 10                | 142734          | 1           | 3/4" x 5-1/2" Nipple  |
| 11                | 390125          | 1           | Pipe Bracket  |
| 12                | 150309          | 2           | #10-16 x 1/2" Hex Head TEK Crimptite Screw  |
| 13                | 140026          | 1           | 3/4" 24 VAC Redundant (natural gas) Gas Valve   |
|                   | 881868          | 1           | 24 VAC Gas Valve L.P. (liquid propane) Conversion Kit   |
| 14                | 150309          | 2           | #10-16 x 1/2" Hex Head TEK Crimptite Screw  |
| 15                | 331291          | 1           | Pipe Bracket  |
| 16                | 141208          | 1           | 3-Port Manifold   |
| 17*               | 140819          | 3           | #30 Burner Orifice (liquid propane gas) ONLY  |
| 18                | 150309          | 4           | #10-16 x 1/2" Hex Head TEK Crimptite Screw  |
| 19                | 141110          | 3           | Burner Tube ONLY  |
| 20                | 150309          | 10          | #10-16 x 1/2" Hex Head TEK Crimptite Screw  |
| 21                | 331287          | 1           | Burner Tube Support ONLY  |
| 22                | 150309          | 2           | #10-16 x 1/2" Hex Head TEK Crimptite Screw  |
| 23                | 150309          | 6           | #10-16 x 1/2" Hex Head TEK Crimptite Screw  |
| 24                | -----           | 1           | Sail Switch<br>(refer to <b>Sail Switch Assembly</b> on <b>page 29</b> )  |
| 25                | 390098          | 1           | Burner Box Cover Plate ONLY   |
| 26                | 150309          | 2           | #10-16 x 1/2" Hex Head TEK Crimptite Screw  |
| 27                | 881597          | 1           | Hot Surface Ignition (HSI) Ignitor  |
| 28                | 128921          | 1           | HSI Flame Sensor  |
| 29                | 150001          | 2           | #6-32 x 1/2" Phillips Round Head Machine Screw  |
| 30                | 151000          | 2           | #6-32 Pal Nut   |
| 31                | 130201          | 1           | 330° Small Manual/Reset Thermostat ONLY<br>(for models mfd. as of May 26, 1998)   |
|                   | 130401          | 1           | 330° Hi-Limit ONLY<br>(for models mfd. prior to May 26, 1998)   |
| 32                | 821457          | 1           | Hi-Limit Bracket  |
| 33                | 881875*         | 1           | HSI Liquid Propane (L.P.) Gas Burner Assembly Complete<br>(includes illus. nos 1 through 36)<br>For models mfd. with Natural Gas ONLY |
|                   | 820872          | 1           | Burner Box ONLY   |
| 34                | 335031          | 1           | Hot Surface Ignition (HSI) Module Mounting Bracket/Manifold Rest  |
| 35                | 881797          | 1           | HSI (Hot Surface Ignition) Module II  |
| 36                | 150309          | 2           | #10-16 x 1/2" Hex Head TEK Crimptite Screw  |
| 37                | 332256          | 1           | L.P. Burner Baffle  |

\* Consult factory for elevations over 2,000 feet.



ELECTRIC OVEN (FRONT VIEW)

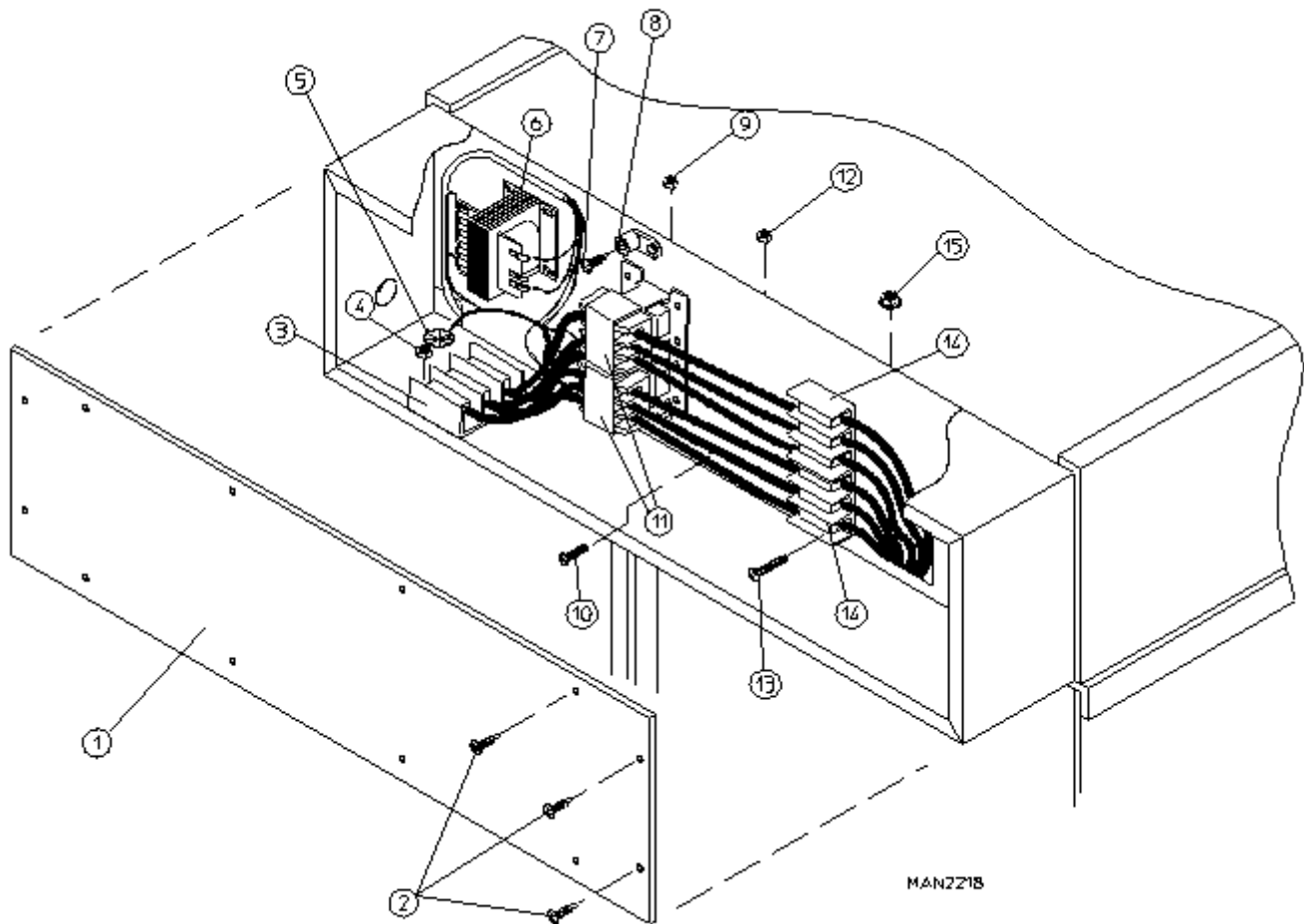
MAN1638



ELECTRIC OVEN (REAR VIEW)

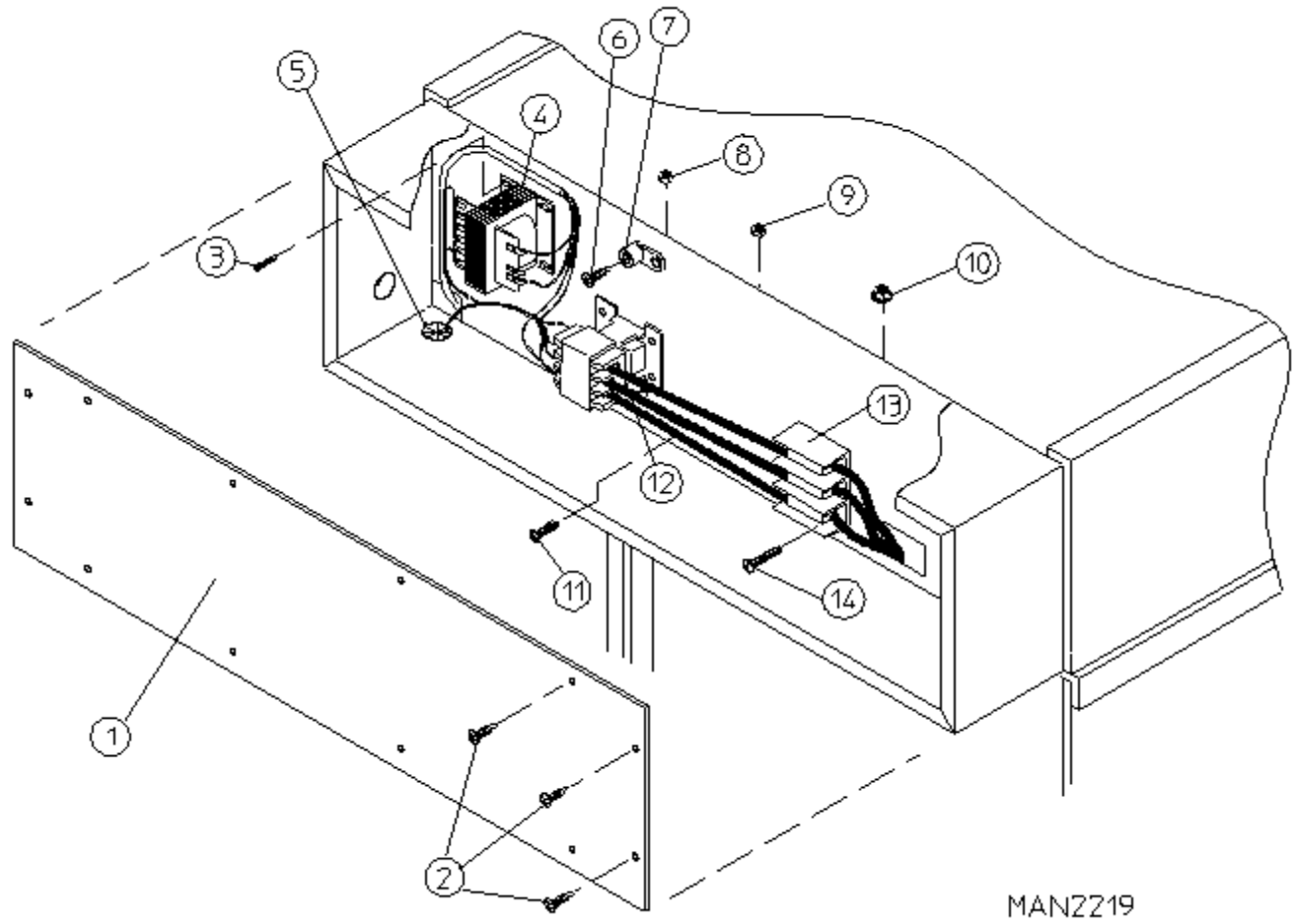
| <u>Illus. No.</u> | <u>Part No.</u> | <u>Qty.</u> | <u>Description</u>   |
|-------------------|-----------------|-------------|--|
| 1                 | 881873          | 1           | Electric Oven Box ONLY   |
|                   | -----*          | 1           | Electric Oven Assembly Complete  |
| 2                 | -----*          | 18          | Electric Element   |
| 3                 | 802802          | 1           | Safety Control Bracket ONLY  |
| 4                 | 150301          | 2           | #8-18 x 7/16" Phillips Pan Head TEK Screw                                |
| 5                 | 130400          | 1           | 290° Hi-Limit ONLY   |
| 6                 | 150309          | 4           | #10-16 x 1/2" Hex Head TEK Crimptite Screw                               |
| 7                 | 802800          | 1           | Sail Switch Box with Cover and Bracket ONLY                              |
|                   | 802801          | 1           | Sail Switch Box Assembly Complete<br>(includes illus. nos. 7 through 15) |
| 8                 | 154004          | 1           | Twin Speed Nut   |
| 9                 | 150309          | 2           | #10-16 x 1/2" Hex Head TEK Crimptite Screw                               |
| 10                | 802799          | 1           | Sail Switch Box with Cover and Bracket ONLY                              |
| 11                | 122200          | 1           | Sail Switch ONLY   |
| 12                | 150303          | 2           | #4 x 3/4" Pan Head "A" Machine Screw                                     |
| 13                | 105500          | 1           | Sail Switch Actuator Rod   |
| 14                | 319202          | 1           | Sail Switch Damper (flat)  |
| 15                | 154002          | 1           | 1/8" Push-On Fastener  |
| 16                | 150309          | 8           | #10-16 x 1/2" Hex Head TEK Crimptite Screw                               |
| 17                | 803101          | 4           | Electric Element Cover ONLY  |
| 18                | 120081          | 36          | Internal Ceramic Insulator   |
| 19                | 120080          | 36          | External Ceramic Insulator   |
| 20                | 152008          | 36          | #10-32 Hex Nut   |
| 21                | 121011*         | ---         | Bus Bar (sold by the foot)   |
| 22                | 121010*         | ---         | Terminal Lug   |
| 23                | 153009          | 36          | #10 Star Washer  |
| 24                | 152008          | 36          | #10-32 Hex Nut   |
| 25                | 150309          | 14          | #10-16 x 1/2" Hex Head TEK Crimptite Screw                               |
| 26                | 321403          | 1           | Enclosure Access Cover ONLY  |
| 27                | -----*          | -           | Oven Wire (sold by the foot)   |

\* Refer to **Electric Oven Component Application Charts** on **page 50**.

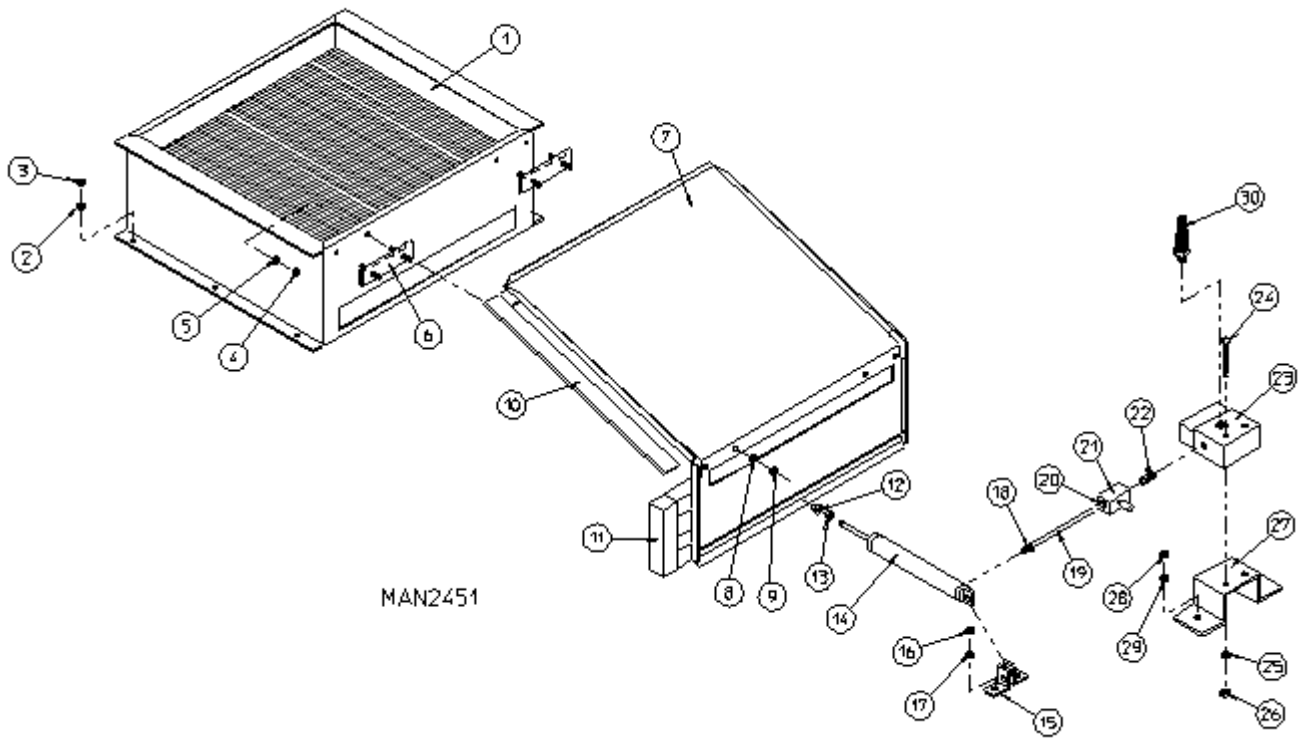
for 208-240 VAC - 3 $\phi$  - 50/60 Hz Models ONLY

| Illus. No. | Part No. | Qty. | Description                                       |
|------------|----------|------|---|
| 1          | 320902   | 1    | Electric Oven Relay Box Cover                     |
| 2          | 150301   | 12   | #8-18 x 7/16" Phillips Pan Head TEK Screw         |
| 3          | 120710   | 1    | Power Distribution Block                          |
| 4          | 151001   | 2    | #8-32 Pal Nut                                     |
| 5          | 121400   | 2    | Universal Bushing                                 |
| 6          | 132004   | 1    | Transformer                                       |
|            |          |      | (for <b>ALL</b> Microprocessor [computer] Models) |
| 7          | 150108   | 3    | #8-32 x 1/2" Pan Head Machine Screw               |
| 8          | 121010   | 1    | L-70 Terminal Lug                                 |
| 9          | 151001   | 1    | #8-32 Pal Nut                                     |
| 10         | 150108   | 1    | #8-32 x 1/2" Pan Head Machine Screw               |
| 11         | 131385   | 2    | TSPT 112-Amp - 24 VAC Relay                       |
| 12         | 151001   | 3    | #8-32 Pal Nut                                     |
| 13         | 150521   | 2    | 1/4-20 x 2" Carriage Bolt                         |
| 14         | 120706   | 1    | Power Distribution Block                          |
| 15         | 152014   | 2    | 1/4-20 Free Spin Wash Nut                         |

for 380-416/480 VAC - 3 $\phi$  - 50/60 Hz Models ONLY



| Illus. No. | Part No. | Qty. | Description  |
|------------|----------|------|--|
| 1          | 320902   | 1    | Electric Oven Relay Box Cover  |
| 2          | 150301   | 12   | #8-18 x 7/16" Phillips Pan Head TEK Screw                              |
| 3          | 150300   | 3    | #10 x 1/2" Hex Washer TEK Screw  |
| 4          | 132004   | 1    | Transformer<br>(for <b>ALL</b> Electric Models - 380 VAC thru 480 VAC) |
| 5          | 121400   | 2    | Universal Bushing  |
| 6          | 150108   | 3    | #8-32 x 1/2" Pan Head Machine Screw                                    |
| 7          | 121010   | 1    | L-70 Terminal Lug  |
| 8          | 151001   | 1    | #8-32 Pal Nut  |
| 9          | 151001   | 3    | #8-32 Pal Nut  |
| 10         | 152014   | 2    | 1/4-20 Free Spin Wash Nut  |
| 11         | 150108   | 1    | #8-32 x 1/2" Pan Head Machine Screw                                    |
| 12         | 131385   | 1    | TSPT 112-Amp - 24 VAC Relay  |
| 13         | 120706   | 1    | Power Distribution Block   |
| 14         | 150501   | 2    | 1/4-20 x 2" Carriage Bolt  |

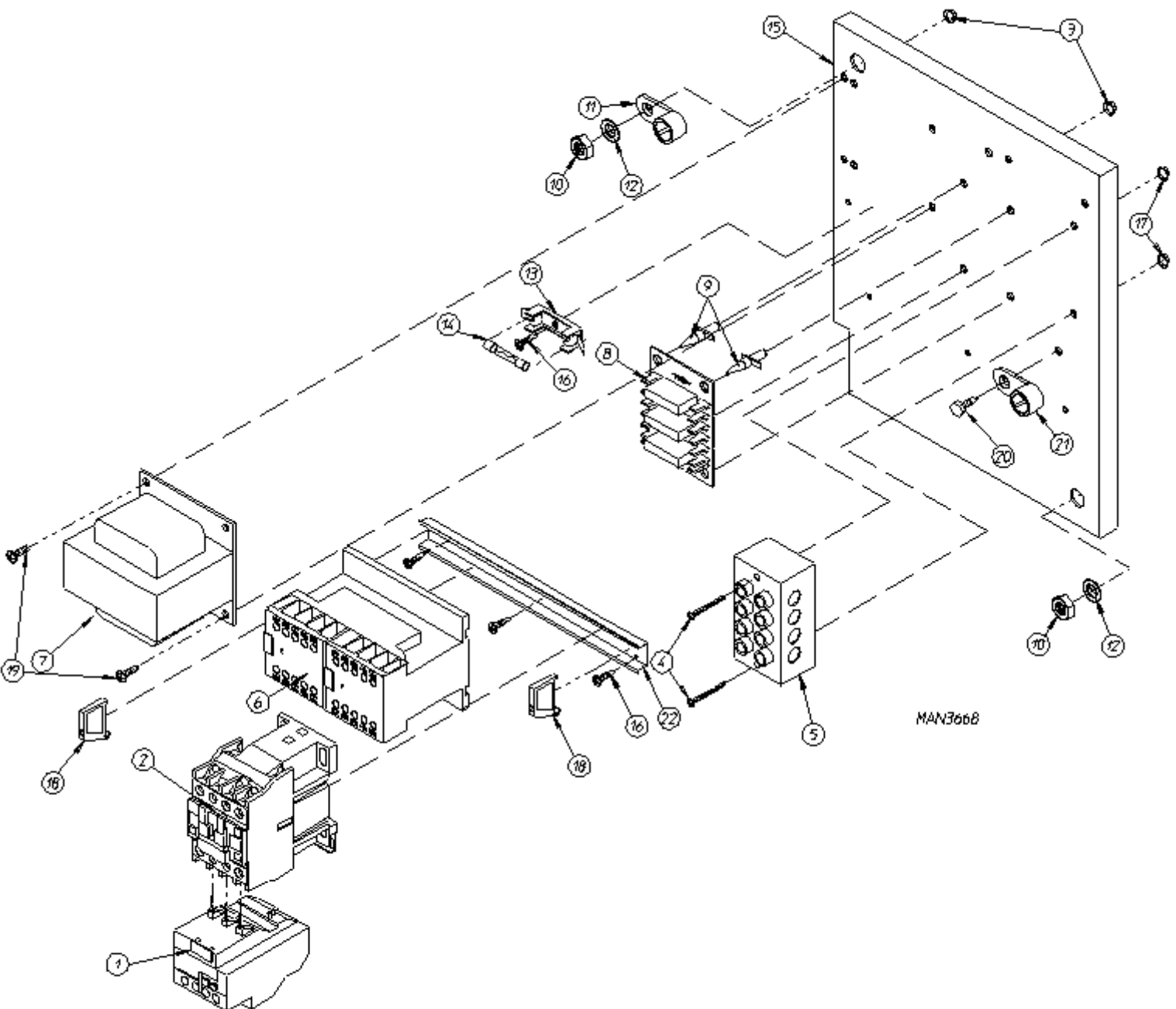




| <u>Illus. No.</u> | <u>Part No.</u> | <u>Qty.</u> | <u>Description</u>  |
|-------------------|-----------------|-------------|---|
| 1                 | 165012          | 1           | Steam Coil Assembly   |
|                   | 165019          | 1           | Steel Steam Coil Assembly (Option)                            |
| 2                 | 153002          | 6           | 5/16" Lock Washer   |
| 3                 | 152004          | 6           | 5/16-18 Hex Nut   |
| 4                 | 152002          | 4           | 1/4-20 Hex Nut  |
| 5                 | 153007          | 4           | 1/4" Lock Washer  |
| 6                 | 820321          | 2           | Steam Damper Hinge Assembly                                   |
| 7                 | 803415          | 1           | Steam Damper Assembly<br>(includes illus. nos. 7, 10, and 11) |
| 8                 | 153007          | 4           | 1/4" Lock Washer  |
| 9                 | 152002          | 4           | 1/4"-20 Hex Nut   |
| 10                | 115995          | 108         | Steam Damper Gasket (sold by the inch)                        |
| 11                | 102350          | 1           | Gasket (68-1/2" length)                                       |
| 12                | 151007          | 1           | 7/16-20 Stainless Steel Acorn Nut                             |
| 13                | 152007          | 1           | 7/16-20 Hex Nut   |
| 14                | 100499          | 1           | 1-1/4" Bore x 3" Stroke Piston                                |
| 15                | 100500          | 1           | Piston Support Bracket  |
| 16                | 152002          | 4           | 1/4-20 Hex Nut  |
| 17                | 153007          | 4           | 1/4" Lock Washer  |
| 18                | 100472          | 1           | 1/4" x 1/8" Connector   |
| 19                | 143110          | 1           | 1/4" Tubing (sold in feet)                                    |
| 20                | 100472          | 1           | 1/4" x 1/8" Connector   |
| 21                | 100496          | 1           | 1/8" Needle Valve   |
| 22                | 143238          | 1           | 1/8" Close Nipple   |
| 23                | 100498          | 1           | 3-Way Micro Valve - 24 VAC                                    |
| 24                | 150002          | 2           | #6-32 x 1" Round Head Machine Screw                           |
| 25                | 153010          | 2           | #6 Star Washer  |
| 26                | 152000          | 2           | #6-32 Hex Nut   |
| 27                | 330987          | 1           | Micro Valve Support Bracket                                   |
| 28                | 152002          | 2           | 1/4-20 Hex Nut  |
| 29                | 153007          | 2           | 1/4" Lock Washer  |
| 30                | 100520          | 1           | 1/8" N.P.T. Silencer (muffler)                                |

Reversing Relay Panel Assembly

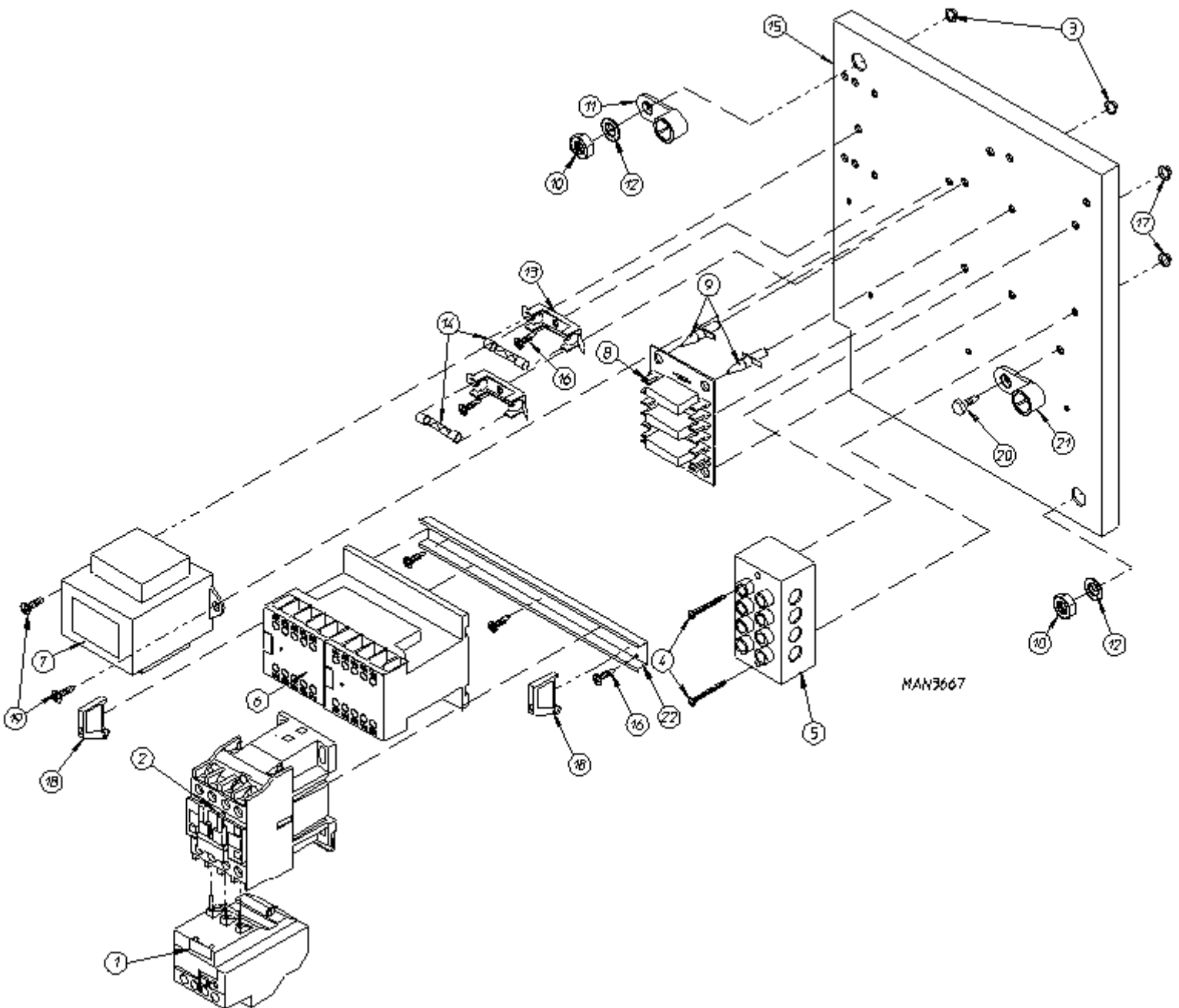
for Gas and Steam Models ONLY  
for 208-230/240 Volt Models ONLY



**for Gas and Steam Models ONLY**  
**for 208-230/240 Volt Models ONLY**

| <u>Illus. No.</u> | <u>Part No.</u> | <u>Qty.</u> | <u>Description</u>  |
|-------------------|-----------------|-------------|---|
| 1                 | 132467          | 1           | 9 -13 Amp Blower Overload   |
| 2                 | 132445          | 1           | 3 HP Impellor (Blower/Fan) Contactor  |
| 3                 | 151001          | 2           | #8-32 Pal Nut   |
| 4                 | 150008          | 2           | #6-32 x 1-1/4" Slotted Round Head Machine Screw   |
| 5                 | 120701          | 1           | 4-Position Power Distribution Block   |
| 6                 | 132448          | 1           | Reversing (Impellor/Blower/Fan) Contactor - 24 VAC  |
| 7                 | 132070          | 1           | 208-230/240 Volt Transformer ONLY<br>(for Gas Models Only)  |
|                   | 132083          | 1           | 208-230/240 Volt Transformer ONLY<br>(for Steam Models Only)  |
|                   | 881763          | 1           | ML Transformer Termination Kit  |
| 8                 | 137060          | 1           | Arc Suppressor (A.S.) Board   |
| 9                 | 137013          | 4           | Nylon Standoff  |
| 10                | 152004          | 2           | 5/16-18 Hex Nut   |
| 11                | 121012          | 1           | L-125 Ground Lug  |
| 12                | 153002          | 2           | 5/16" Lock Washer   |
| 13                | 136008          | 2           | Fuse Block/Strip Holder ONLY  |
| 14                | 136057          | 2           | 1/2-Amp (Slo Blo) Fuse  |
| 15                | 881888          | 1           | Reversing Relay Panel Assembly Complete<br>(includes illus. nos. 1 through 22)<br>For Gas Models ONLY   |
|                   | 881890          | 1           | Reversing Relay Panel Assembly Complete<br>(includes illus. nos. 1 through 22)<br>For Steam Models ONLY |
|                   | 332346          | 1           | Relay Mounting Panel ONLY   |
| 16                | 150301          | 4           | #8-18 x 7/16" Phillips Pan Head TEK Screw   |
| 17                | 151000          | 2           | #6-32 Pal Nut   |
| 18                | 120765          | 2           | End Stop /Bracket   |
| 19                | 150108          | 2           | #8-32 x 1/2" Pan Head Machine Screw   |
| 20                | 150297          | 1           | #10 x 1/2" Hex Washer TEK Screw - Green   |
| 21                | 121010          | 1           | L-70 Ground Lug   |
| 22                | 120768          | 8           | Din Mounting Rail (sold by the inch)  |
| --                | 835186          | 1           | Phase 6 Microprocessor Reversing Relay Panel Wiring<br>(for Gas Models Only)                            |
| --                | 835188          | 1           | Phase 6 Microprocessor Reversing Relay Panel Wiring<br>(for Steam Models Only)                          |
| --                | 842979          | 1           | Phase 6 Microprocessor Reversing Relay Panel ASB Wiring   |

for Gas and Steam Models ONLY  
for 380/416 Volt Models ONLY

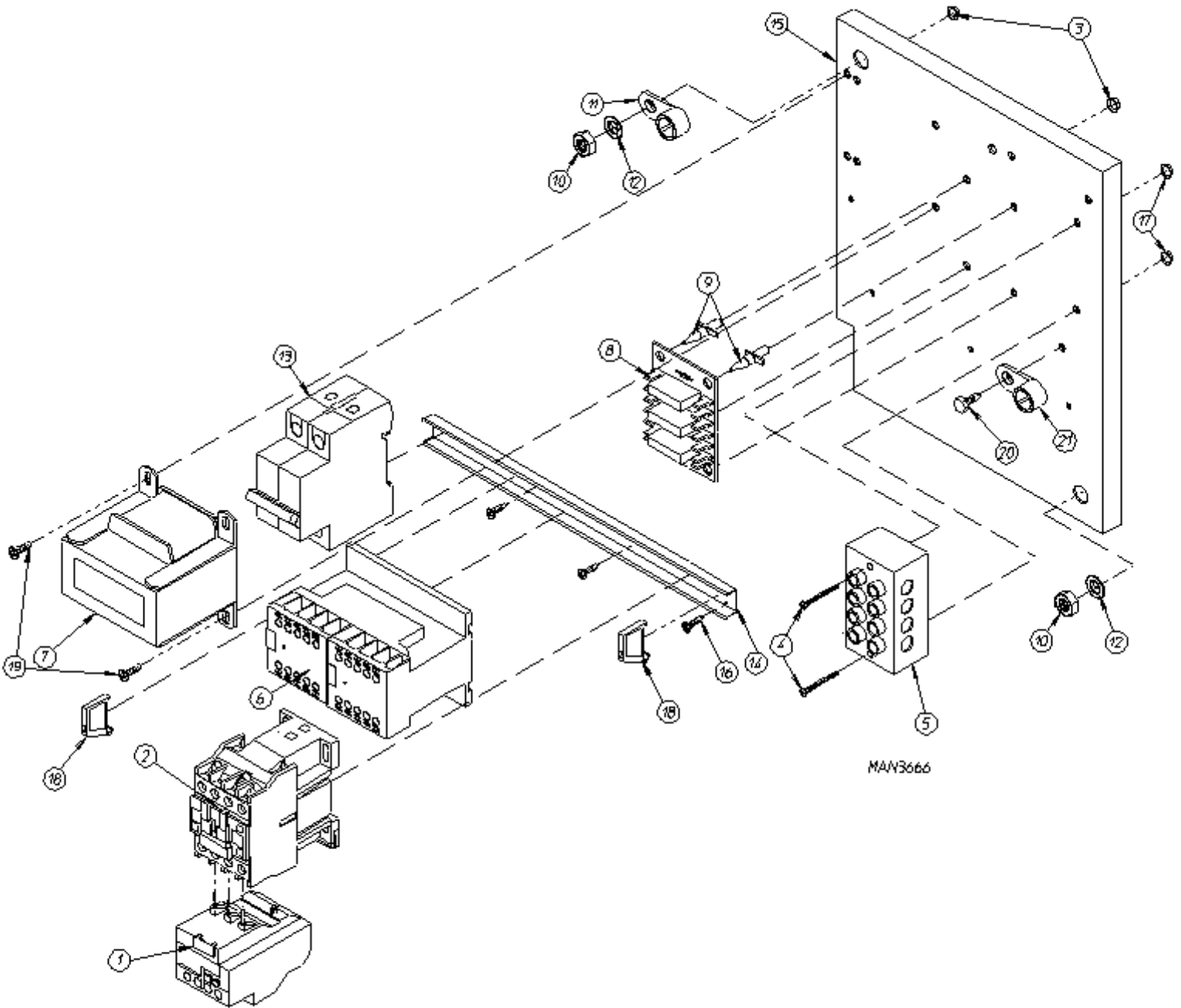


**for Gas and Steam Models ONLY**  
**for 380/416 Volt Models ONLY**

| <u>Illus. No.</u> | <u>Part No.</u> | <u>Qty.</u> | <u>Description</u>  |
|-------------------|-----------------|-------------|---|
| 1                 | 132468          | 1           | 4 - 6 Amp Blower Overload   |
| 2                 | 132445          | 1           | 3 HP Impellor (Blower/Fan) Contactor  |
| 3                 | 151001          | 2           | #8-32 Pal Nut   |
| 4                 | 150008          | 2           | #6-32 x 1-1/4" Slotted Round Head Machine Screw   |
| 5                 | 120701          | 1           | 4-Position Power Distribution Block   |
| 6                 | 132448          | 1           | Reversing (Impellor/Blower/Fan) Contactor - 24 VAC  |
| 7                 | 132082          | 1           | 380/416 Volt Transformer ONLY   |
|                   | 881763          | 1           | ML Transformer Termination Kit  |
| 8                 | 137060          | 1           | Arc Suppressor (A.S.) Board   |
| 9                 | 137013          | 4           | Nylon Standoff  |
| 10                | 152004          | 2           | 5/16-18 Hex Nut   |
| 11                | 121012          | 1           | L-125 Ground Lug  |
| 12                | 153002          | 2           | 5/16" Lock Washer   |
| 13                | 136008          | 2           | Fuse Block/Strip Holder ONLY  |
| 14                | 136057          | 2           | 1/2-Amp (Slo Blo) Fuse  |
| 15                | 881887          | 1           | Reversing Relay Panel Assembly Complete<br>(includes illus. nos. 1 through 22)<br>For Gas Models ONLY   |
|                   | 881892          | 1           | Reversing Relay Panel Assembly Complete<br>(includes illus. nos. 1 through 22)<br>For Steam Models ONLY |
|                   | 332346          | 1           | Relay Mounting Panel ONLY   |
| 16                | 150301          | 4           | #8-18 x 7/16" Phillips Pan Head TEK Screw   |
| 17                | 151000          | 2           | #6-32 Pal Nut   |
| 18                | 120765          | 2           | End Stop /Bracket   |
| 19                | 150108          | 2           | #8-32 x 1/2" Pan Head Machine Screw   |
| 20                | 150297          | 1           | #10 x 1/2" Hex Washer TEK Screw - Green   |
| 21                | 121010          | 1           | L-70 Ground Lug   |
| 22                | 120768          | 8           | Din Mounting Rail (sold by the inch)  |
| --                | 843009          | 1           | Phase 6 Microprocessor Reversing Relay Panel Wiring<br>(for Gas Models Only)                            |
| --                | 835185          | 1           | Phase 6 Microprocessor Reversing Relay Panel Wiring<br>(for Steam Models Only)                          |
| --                | 842979          | 1           | Phase 6 Microprocessor Reversing Relay Panel ASB Wiring   |

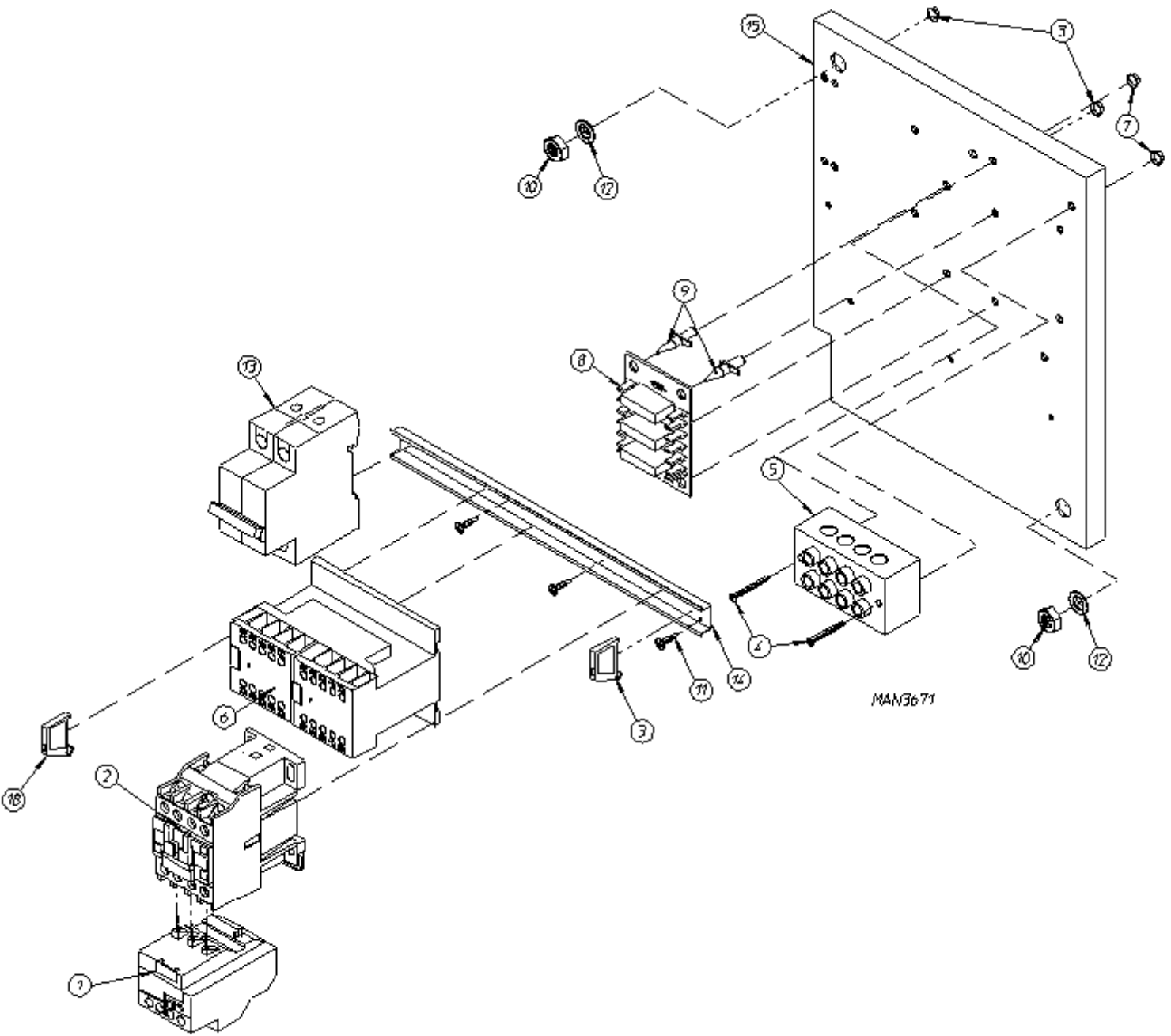
Reversing Relay Panel Assembly

for Gas and Steam Models ONLY  
for 460/480 Volt Models ONLY



***for Gas and Steam Models ONLY***  
**for 460/480 Volt Models ONLY**

| <u>Illus. No.</u> | <u>Part No.</u> | <u>Qty.</u> | <u>Description</u>  |
|-------------------|-----------------|-------------|---|
| 1                 | 132468          | 1           | 4 - 6 Amp Blower Overload   |
| 2                 | 132445          | 1           | 3 HP Impellor (Blower/Fan) Contactor  |
| 3                 | 151001          | 2           | #8-32 Pal Nut   |
| 4                 | 150008          | 2           | #6-32 x 1-1/4" Slotted Round Head Machine Screw   |
| 5                 | 120701          | 1           | 4-Position Power Distribution Block   |
| 6                 | 132448          | 1           | Reversing (Impellor/Blower/Fan) Contactor - 24 VAC  |
| 7                 | 132067          | 1           | 460/480 Volt Transformer ONLY   |
|                   | 881763          | 1           | ML Transformer Termination Kit  |
| 8                 | 137060          | 1           | Arc Suppressor (A.S.) Board   |
| 9                 | 137013          | 4           | Nylon Standoff  |
| 10                | 152004          | 2           | 5/16-18 Hex Nut   |
| 11                | 121012          | 1           | L-125 Ground Lug  |
| 12                | 153002          | 2           | 5/16" Lock Washer   |
| 13                | 135501          | 2           | Double Pole Circuit Breaker   |
| 14                | 120768          | 9           | Din Mounting Rail (sold by the inch)  |
| 15                | 881886          | 1           | Reversing Relay Panel Assembly Complete<br>(includes illus. nos. 1 through 22)<br>For Gas Models ONLY   |
|                   | 881889          | 1           | Reversing Relay Panel Assembly Complete<br>(includes illus. nos. 1 through 22)<br>For Steam Models ONLY |
|                   | 332346          | 1           | Relay Mounting Panel ONLY   |
| 16                | 150301          | 4           | #8-18 x 7/16" Phillips Pan Head TEK Screw   |
| 17                | 151000          | 2           | #6-32 Pal Nut   |
| 18                | 120765          | 2           | End Stop /Bracket   |
| 19                | 150108          | 2           | #8-32 x 1/2" Pan Head Machine Screw   |
| 20                | 150297          | 1           | #10 x 1/2" Hex Washer TEK Screw - Green   |
| 21                | 121010          | 1           | L-70 Ground Lug   |
| ---               | 843010          | 1           | Phase 6 Microprocessor Reversing Relay Panel Wiring<br>(for Gas Models Only)                            |
| ---               | 835235          | 1           | Phase 6 Microprocessor Reversing Relay Panel Wiring<br>(for Steam Models Only)                          |
| ---               | 842979          | 1           | Phase 6 Microprocessor Reversing Relay Panel ASB Wiring   |

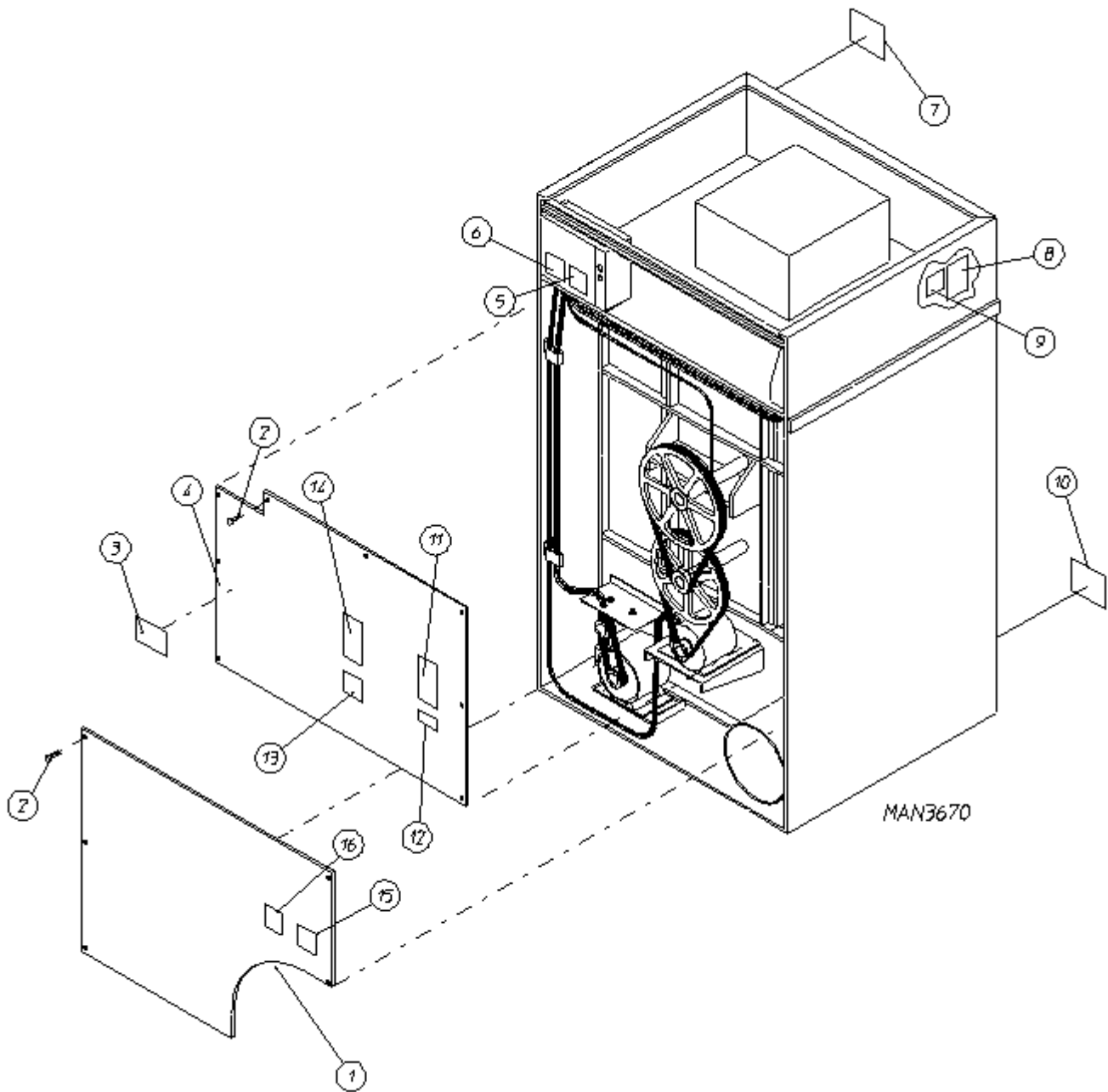




*for Electric Models ONLY*

---

| <u>Illus. No.</u> | <u>Part No.</u> | <u>Qty.</u> | <u>Description</u>   |
|-------------------|-----------------|-------------|--|
| 1                 | 132468          | 1           | 4 - 6 Amp Blower Overload  |
| 2                 | 132445          | 1           | 3 HP Impellor (Blower/Fan) Contactor   |
| 3                 | 151001          | 2           | #8-32 Pal Nut  |
| 4                 | 150008          | 2           | #6-32 x 1-1/4" Slotted Round Head Machine Screw                                |
| 5                 | 120701          | 1           | 4-Position Power Distribution Block  |
| 6                 | 132448          | 1           | Reversing (Impellor/Blower/Fan) Contactor - 24 VAC                             |
| 7                 | 132067          | 1           | 460/480 Volt Transformer ONLY  |
|                   | 881763          | 1           | M/L Transformer Termination Kit  |
| 8                 | 137060          | 1           | Arc uppressor (A.S.) Board   |
| 9                 | 137013          | 4           | Nylon Standoff   |
| 10                | 152004          | 2           | 5/16-18 Hex Nut  |
| 11                | 121012          | 1           | L-125 Ground Lug   |
| 12                | 153002          | 2           | 5/16" Lock Washer  |
| 13                | 135501          | 2           | Double Pole Circuit Breaker  |
| 14                | 120768          | 9           | Din Mounting Rail (sold by the inch)   |
| 15                | 881891          | 1           | Reversing Relay Panel Assembly Complete<br>(includes illus. nos. 1 through 22) |
|                   | 332346          | 1           | Relay Mounting Panel ONLY  |
| ---               | 835207          | 1           | Phase 6 Microprocessor Reversing Relay Panel Wiring                            |
| ---               | 842979          | 1           | Phase 6 Microprocessor Reversing Relay Panel ASB Wiring                        |



---

| <u>Illus. No.</u> | <u>Part No.</u> | <u>Qty.</u> | <u>Description</u>                                       |
|-------------------|-----------------|-------------|--|
| 1                 | 354000          | 1           | Lower Back Guard<br>(for Gas Models and Electric Models) |
|                   | 354003          | 1           | Lower Back Guard<br>(for Steam Models Only)              |
| 2                 | 150301          | 12          | #8-18 x 7/16" Phillips Pan Head TEK Screw                |
| 3                 | 112046          | 1           | "Important for Computer Ground" Label                    |
| 4                 | 813029          | 1           | Top Back Guard   |
| 5                 | 114005          | 1           | "DANGER - Hot" Label                                     |
| 6                 | 114007          | 1           | "DANGER - High Voltage" Label                            |
| 7                 | 114006          | 1           | "WARNING - Fire Hazards" Label                           |
| 8                 | 112284          | 1           | "Phase 6 OPL Programming Location" Label                 |
| 9                 | 114041          | 1           | "Phase 6 'A - B' Factor" Label                           |
| 10                | 112280          | 1           | "Clean Lint Screen" Label                                |
| 11                | 112229          | 1           | "Installation Instructions" Label                        |
| 12                | 112017          | 1           | "ADC Name, Address, Phone #" Label                       |
| 13                | 114004          | 1           | "CAUTION - Rotating Parts" Label                         |
| 14                | 112519          | 1           | "Routine Maintenance Schedule" Label                     |
| 15                | 114008          | 1           | "WARNING - Fumes" Label                                  |
| 16                | 114001          | 1           | "CAUTION - Exhaust/Lint Screen" Label                    |

|                                 |                               |                 |        |        |        |        |        |        |        |        |        |        |
|---------------------------------|-------------------------------|-----------------|--------|--------|--------|--------|--------|--------|--------|--------|--------|--------|
| <b>72 Kw Oven</b>               | <b>Volts</b>                  | 208             |        | 230    |        | 380    |        | 416    |        | 480    |        |        |
|                                 | <b>Phase</b>                  | 3ø              |        | 3ø     |        | 3ø     |        | 3ø     |        | 3ø     |        |        |
|                                 | <b>Wire</b>                   | 3               |        | 3      |        | 3 or 4 |        | 3 or 4 |        | 3 or 4 |        |        |
|                                 | <b>Oven Assembly Part No.</b> | 881876          |        | 881877 |        | 881878 |        | 881879 |        | 881880 |        |        |
|                                 | <b>Elements</b>               | <b>Qty.</b>     | 18     |        | 18     |        | 18     |        | 18     |        | 18     |        |
|                                 |                               | <b>Size</b>     | 4 Kw   |        | 4 Kw   |        | 4 Kw   |        | 4 Kw   |        | 4 Kw   |        |
|                                 |                               | <b>Part No.</b> | 120008 |        | 120009 |        | 120044 |        | 120008 |        | 120009 |        |
|                                 | <b>Oven Wire</b>              | <b>Qty*</b>     | 6'     | 25'    | 6'     | 25'    | 3'     | 8'     | 3'     | 25'    | 3'     | 25'    |
|                                 |                               | <b>Size</b>     | #2     | #8     | #2     | #8     | #2     | #8     | #2     | #8     | #2     | #8     |
|                                 |                               | <b>Part No.</b> | 133302 | 133100 | 133302 | 133100 | 133302 | 133100 | 133302 | 133100 | 133302 | 133100 |
|                                 | <b>Terminal Lug</b>           | <b>Qty.</b>     | 18     |        | 18     |        | 9      | 1      | 10     | 1      | 18     | 1      |
|                                 |                               | <b>Part No.</b> | 121010 |        | 121010 |        | 121010 | 121012 | 121010 | 121012 | 121010 | 121012 |
| <b>Bus Bar Part No. 121011*</b> | 2'                            |                 | 2      |        | 3'     |        | 3      |        | 3'     |        |        |        |

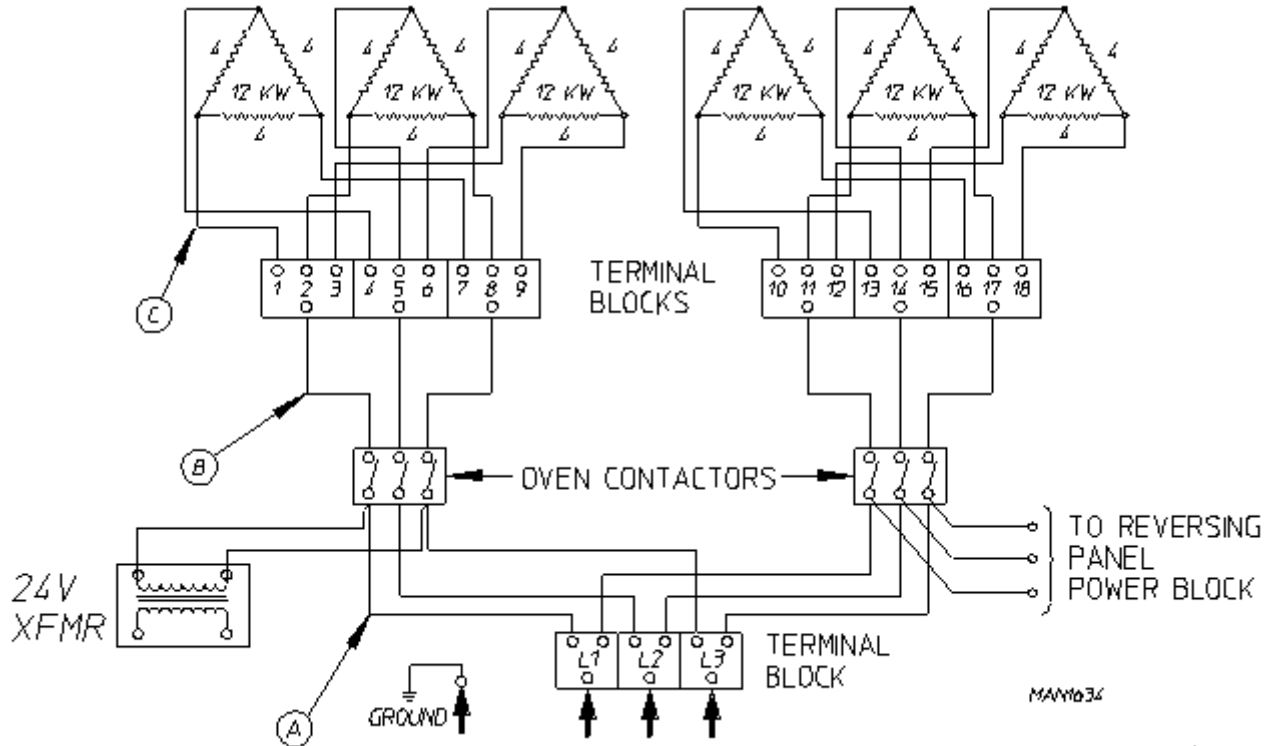
\* Sold by the foot.

|                                 |                            |                 |        |        |        |        |        |        |        |        |        |        |
|---------------------------------|----------------------------|-----------------|--------|--------|--------|--------|--------|--------|--------|--------|--------|--------|
| <b>80 Kw Oven</b>               | <b>Volts</b>               | 208             |        | 230    |        | 380    |        | 416    |        | 480    |        |        |
|                                 | <b>Phase</b>               | 3ø              |        | 3ø     |        | 3ø     |        | 3ø     |        | 3ø     |        |        |
|                                 | <b>Wire</b>                | 3               |        | 3      |        | 3 or 4 |        | 3 or 4 |        | 3 or 4 |        |        |
|                                 | <b>Oven Assy. Part No.</b> | 881881          |        | 881882 |        | 881883 |        | 881884 |        | 881885 |        |        |
|                                 | <b>Elements</b>            | <b>Qty.</b>     | 18     |        | 18     |        | 18     |        | 18     |        | 18     |        |
|                                 |                            | <b>Size</b>     | 4.5 Kw |        | 4.5 Kw |        | 4.5 Kw |        | 4.5 Kw |        | 4.5 Kw |        |
|                                 |                            | <b>Part No.</b> | 120047 |        | 120048 |        | 120022 |        | 120047 |        | 120048 |        |
|                                 | <b>Oven Wire</b>           | <b>Qty*</b>     | 6'     | 25'    | 6'     | 25'    | 4'     | 25'    | 6'     | 25'    | 6'     | 25'    |
|                                 |                            | <b>Size</b>     | #2     | #8     | #2     | #8     | #1     | #8     | #1     | #8     | #2     | #8     |
|                                 |                            | <b>Part No.</b> | 133302 | 133100 | 133302 | 133100 | 133301 | 133100 | 133301 | 133100 | 133302 | 133100 |
|                                 | <b>Terminal Lug</b>        | <b>Qty.</b>     | 18     |        | 18     |        | 11     | 1      | 18     |        | 18     |        |
|                                 |                            | <b>Part No.</b> | 121010 |        | 121010 |        | 121010 | 121012 | 121010 |        | 121010 |        |
| <b>Bus Bar Part No. 121011*</b> | 8'                         |                 | 8'     |        | 11'    |        | 11'    |        | 11'    |        |        |        |

\* Sold by the foot.

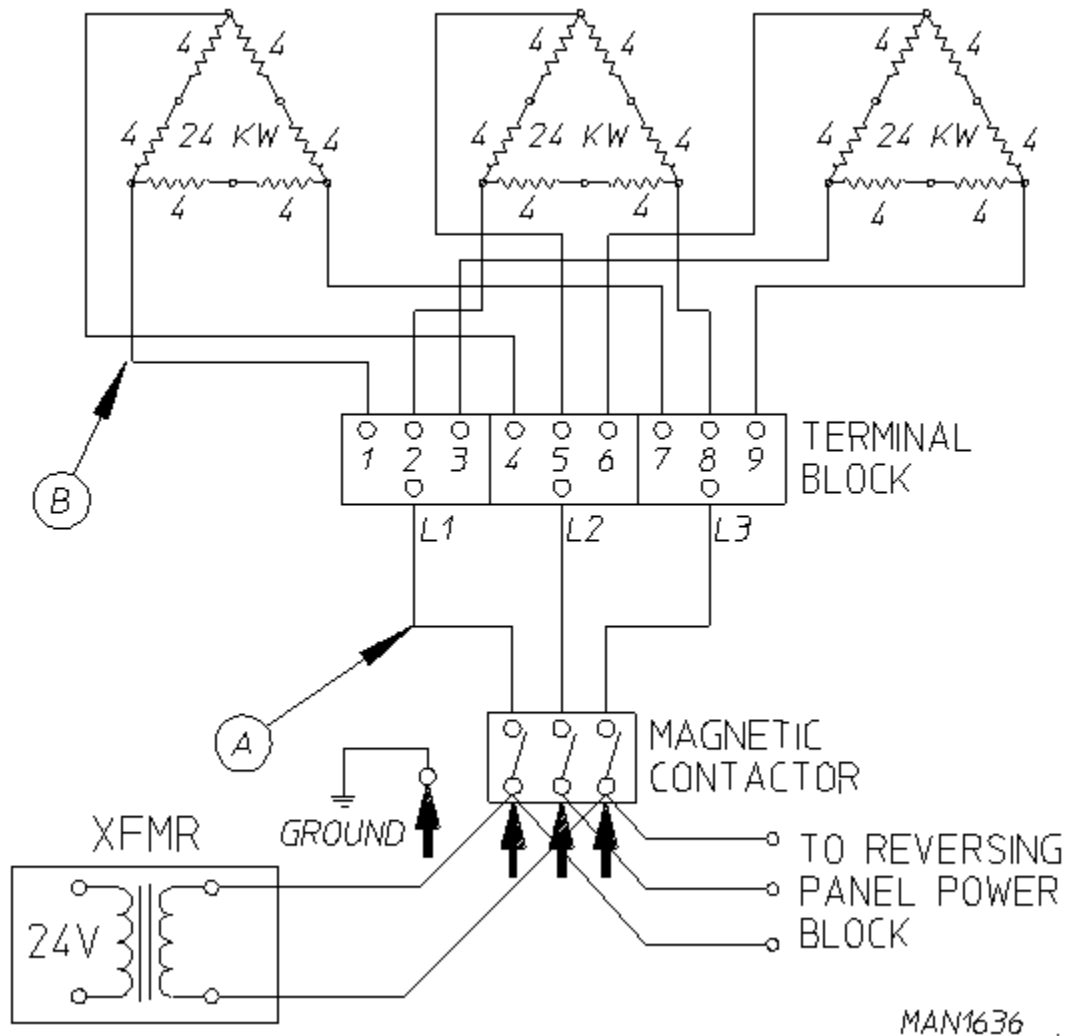
72 Kw - 208-240 VAC - 3 $\phi$  - 50/60 Hz

**MLE-130 (72KW) ELECTRIC OVEN POWER DISTRIBUTION**  
**(72 Kw - 208-240 VAC - 3 $\phi$  - 50/60 Hz)**



| Electric Service        | Qty. Elements | Element Part Number | Oven Amps | Wire Size |   |   | Contactor | 24 VAC Step Down Transformer |
|-------------------------|---------------|---------------------|-----------|-----------|---|---|-----------|------------------------------|
|                         |               |                     |           | A         | B | C |           |                              |
| 208v / 3 $\phi$ / 3, 4w | 18            | 120008              | 200       | 2         | 2 | 8 | 131385    | 132004                       |
| 240v / 3 $\phi$ / 3, 4w | 18            | 120009              | 174       | 2         | 2 | 8 | 131385    | 132004                       |

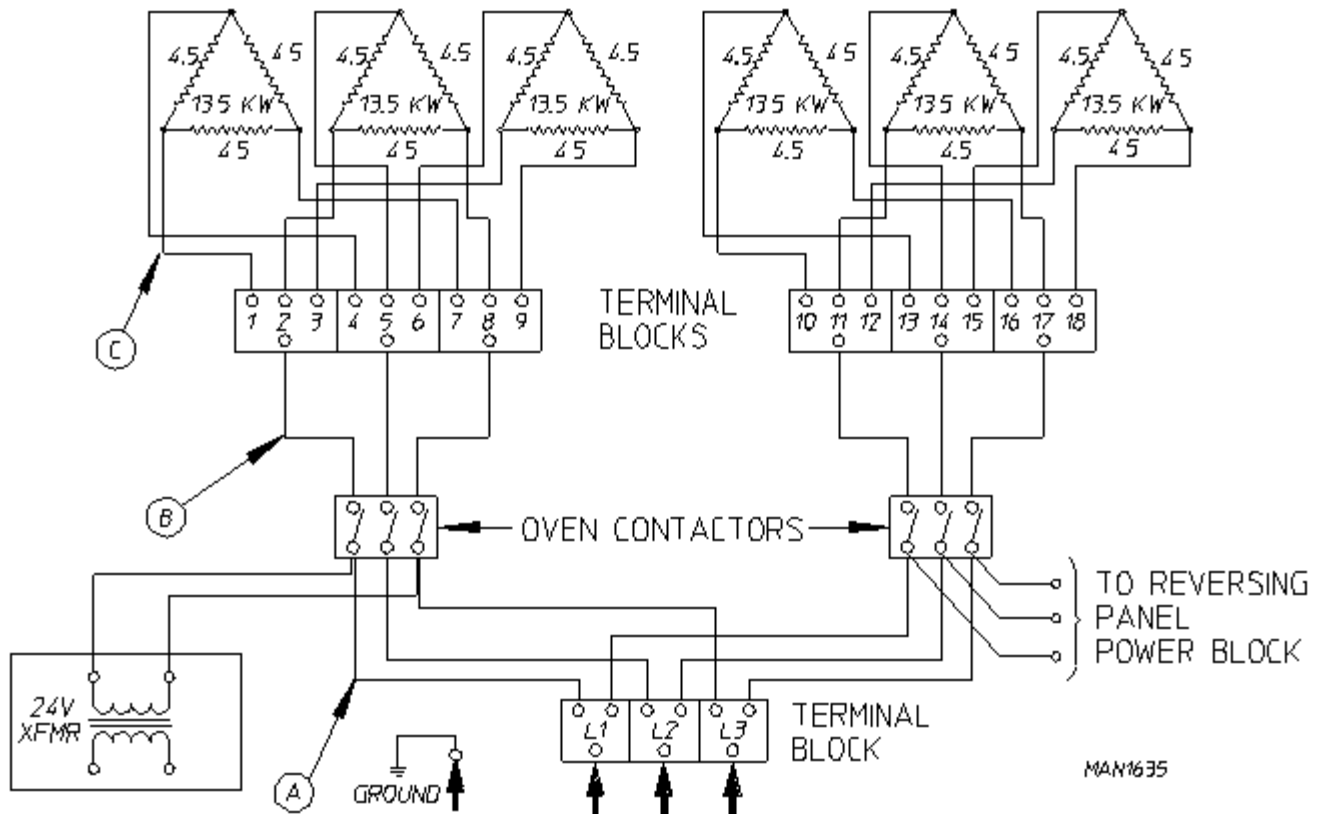
**MLE-130 (72KW) ELECTRIC OVEN POWER DISTRIBUTION**  
**(72 Kw - 380-416/480 VAC - 3ø - 50/60 Hz)**



| Electric Service  | Qty. Elements | Element Part Number | Oven Amps | Wire Size |   | Contactor | 24 VAC Step Down Transformer |
|-------------------|---------------|---------------------|-----------|-----------|---|-----------|------------------------------|
|                   |               |                     |           | A         | B |           |                              |
| 380v / 3ø / 3, 4w | 18            | 120044              | 110       | 2         | 8 | 131385    | 132004                       |
| 416v / 3ø / 3, 4w | 18            | 120008              | 100       | 2         | 8 | 131385    | 132004                       |
| 480v / 3ø / 3, 4w | 18            | 120009              | 87        | 2         | 8 | 131385    | 132004                       |

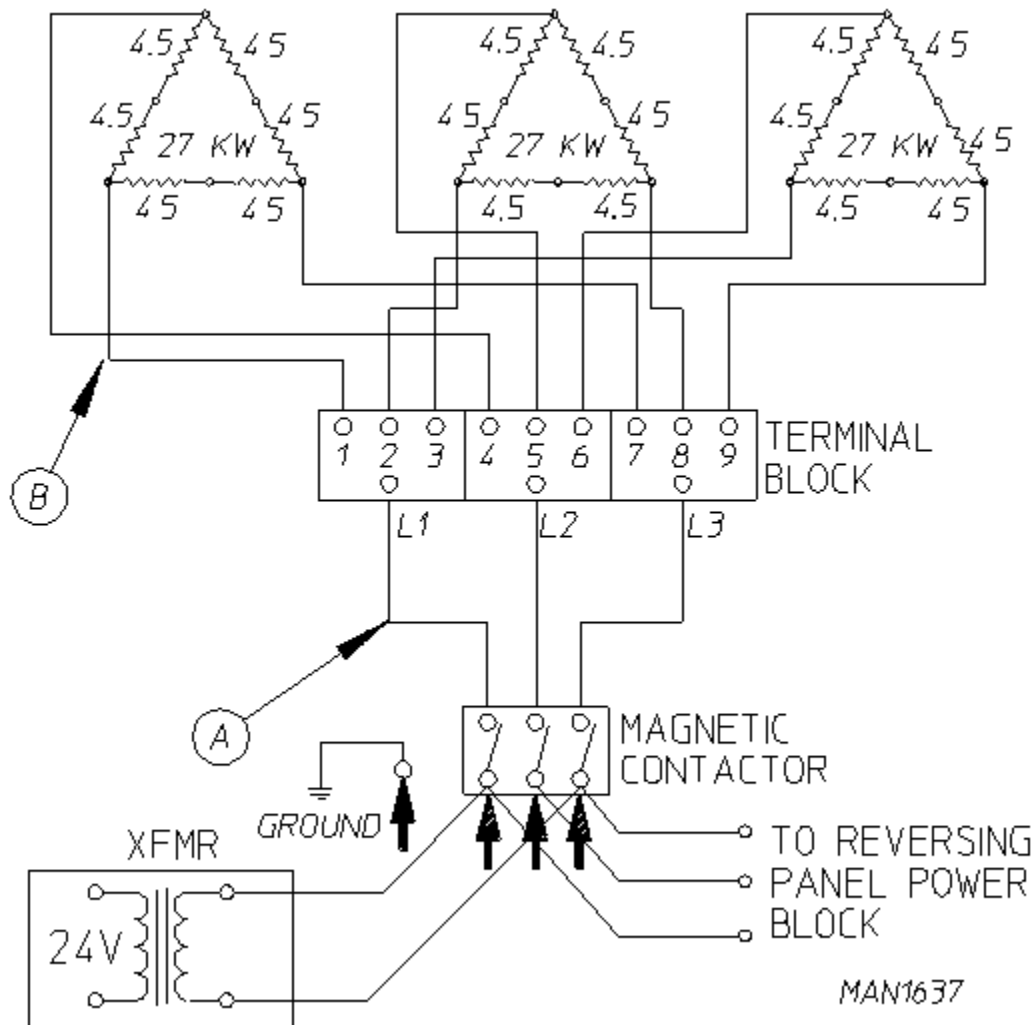
80 Kw - 208-240 VAC - 3 $\phi$  - 50/60 Hz

**MLE-130 (80KW) ELECTRIC OVEN POWER DISTRIBUTION**  
**(80 Kw - 208-240 VAC - 3 $\phi$  - 50/60 Hz)**



| Electric Service        | Qty. Elements | Element Part Number | Oven Amps | Wire Size |   |   | Contactor | 24 VAC Step Down Transformer |
|-------------------------|---------------|---------------------|-----------|-----------|---|---|-----------|------------------------------|
|                         |               |                     |           | A         | B | C |           |                              |
| 208v / 3 $\phi$ / 3, 4w | 18            | 120047              | 222       | 2         | 2 | 8 | 131385    | 132004                       |
| 240v / 3 $\phi$ / 3, 4w | 18            | 120048              | 193       | 2         | 2 | 8 | 131385    | 132004                       |

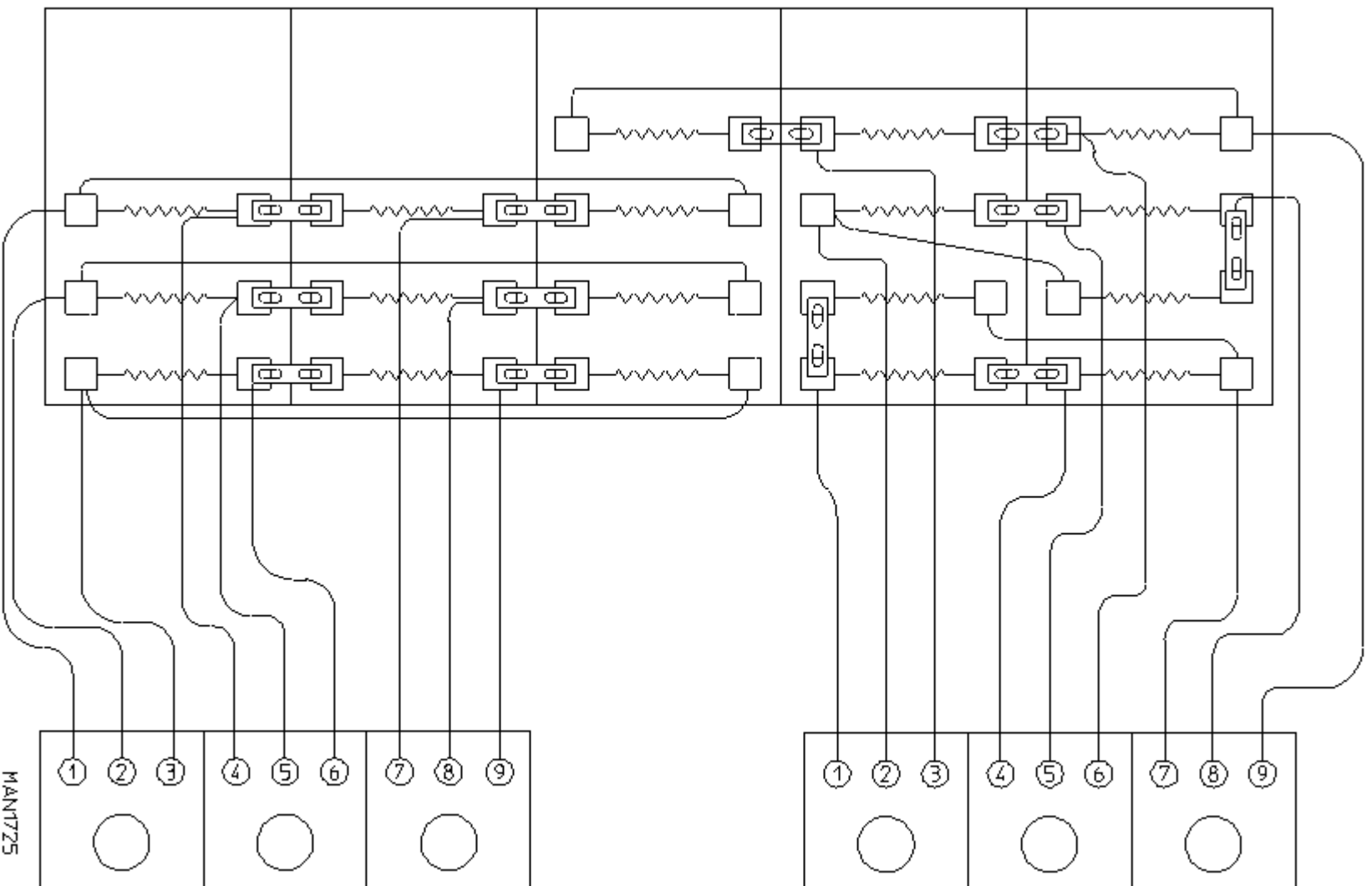
**MLE-130 (80KW) ELECTRIC OVEN POWER DISTRIBUTION**  
**(80 Kw - 380-416/480 VAC - 3ø - 50/60 Hz)**



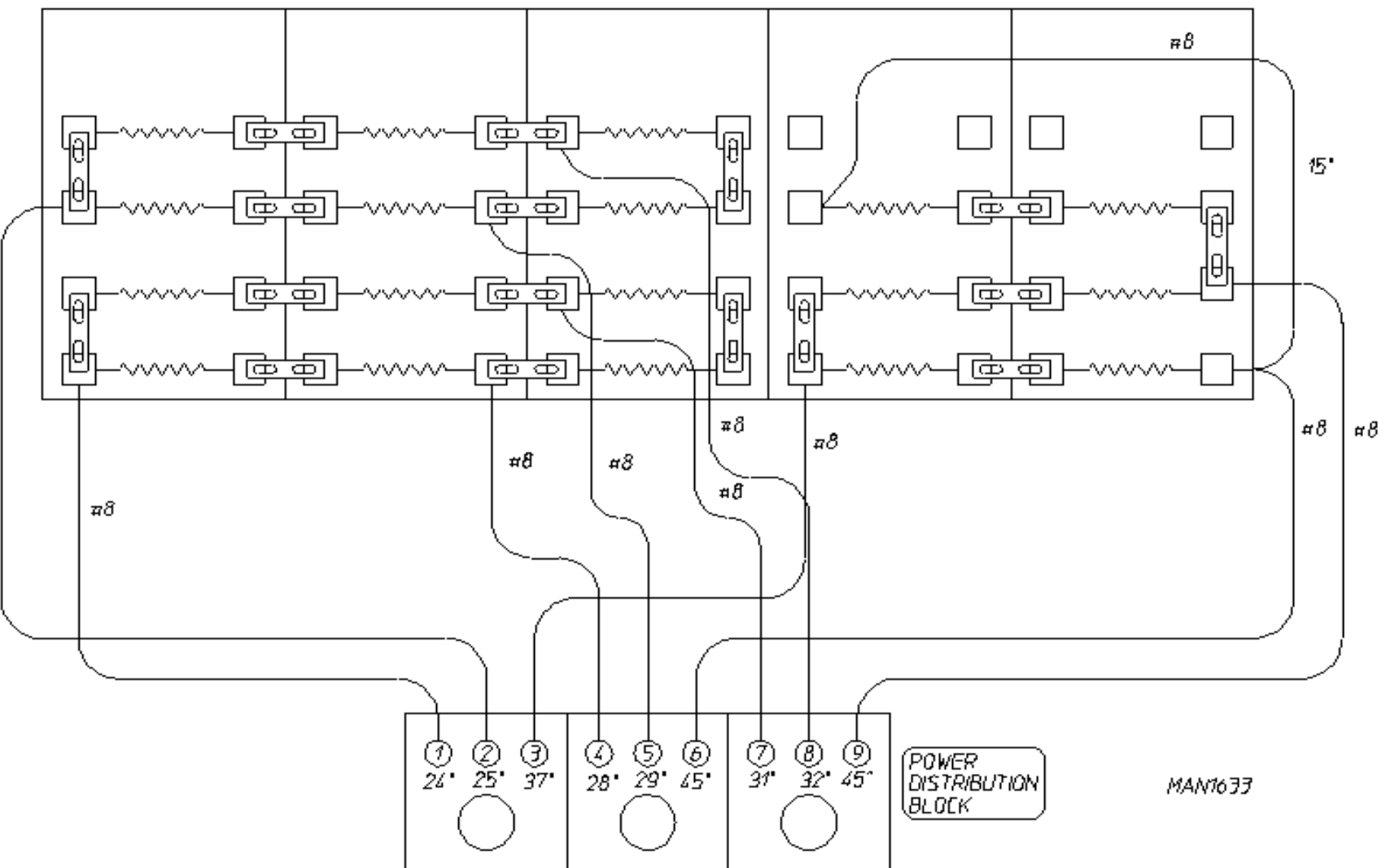
| Electric Service  | Qty. Elements | Element Part Number | Oven Amps | Wire Size |   | Contactor | 24 VAC Step Down Transformer |
|-------------------|---------------|---------------------|-----------|-----------|---|-----------|------------------------------|
|                   |               |                     |           | A         | B |           |                              |
| 380v / 3ø / 3, 4w | 18            | 120022              | 122       | 1         | 8 | 131385    | 132004                       |
| 416v / 3ø / 3, 4w | 18            | 120047              | 111       | 1         | 8 | 131385    | 132004                       |
| 480v / 3ø / 3, 4w | 18            | 120048              | 96.3      | 2         | 8 | 131385    | 132004                       |



72/80 Kw - 208-240 VAC - 3 $\phi$  - 50/60 Hz



72/80 Kw - 380-416/480 VAC - 3ø - 50/60 Hz



---

| <u>Part No.</u> | <u>Description</u>                      |
|-----------------|---|
| 112098          | "Check Rotation" Label                  |
| 112025          | "CAUTION - Disconnect Supply" Label     |
| 114046          | "Manual Hi-Limit Reset" Label           |
| 114051          | "Phase 6 Computer 'A - B' Factor" Label |
| 114076          | "Grease Instruction" Label              |
| 120100          | 3/8" Straight (BX) Connector            |
| 120300          | 3/8" x 45° (BX) Connector               |
| 120400          | 3/8" Red Jacket (BX) Insulator          |
| 120500          | 3/8" Jiffy Clip (BX Retainer Clip)      |
| 120600          | 3/8" Greenfield (BX)                    |
| 120800          | 1/4" In-Line Connector                  |
| 120802          | Red Butt Connector                      |
| 120902          | #74B Wire Nut                           |
| 120903          | Crimp-on Wire Nut                       |
| 121014          | 1/4" Insulated (female) Terminal        |
| 121026          | Tab Receptacle Combination              |
| 121499          | 4" Harness Tie                          |
| 121500          | 7" Harness Tie                          |
| 122503          | Harness Tie Mounting Clip               |
| 122804          | Manometer (water column test gauge)     |
| 121507          | Snap Wire Tie Screw Mount               |
| 880200          | Electrical Terminal (assortment) Kit    |

