



**ML-130 / ML-130DR**  
**Parts Manual**  
**Phase 7 / DSI / Non-Coin /**  
**Fire Suppression System**

---

**American Dryer Corporation**  
88 Currant Road  
Fall River MA 02720-4781 USA  
Telephone: +1 (508) 678-9000 / Fax: +1 (508) 678-9447  
e-mail: techsupport@amdry.com

[www.adclaundry.com](http://www.adclaundry.com)

# Retain This Manual In A Safe Place For Future Reference

American Dryer Corporation products embody advanced concepts in engineering, design, and safety. If this product is properly maintained, it will provide many years of safe, efficient, and trouble free operation.

**ONLY qualified technicians should service this equipment.**

**OBSERVE ALL SAFETY PRECAUTIONS** displayed on the equipment or specified in the installation manual included with the dryer.

The following “**FOR YOUR SAFETY**” caution must be posted near the dryer in a prominent location.

## FOR YOUR SAFETY

Do not store or use gasoline or other flammable vapors and liquids in the vicinity of this or any other appliance.

## POUR VOTRE SÉCURITÉ

Ne pas entreposer ni utiliser d'essence ni d'autres vapeurs ou liquides inflammables à proximité de cet appareil ou de tout autre appareil.

We have tried to make this manual as complete as possible and hope you will find it useful. ADC reserves the right to make changes from time to time, without notice or obligation, in prices, specifications, colors, and material, and to change or discontinue models.

## Important

For your convenience, log the following information:

DATE OF PURCHASE \_\_\_\_\_ MODEL NO. \_\_\_\_\_

RESELLER'S NAME \_\_\_\_\_

Serial Number(s) \_\_\_\_\_

Replacement parts can be obtained from your reseller or the ADC factory. When ordering replacement parts from the factory, you can FAX your order to ADC at (508) 678-9447 or telephone your order directly to the ADC Parts Department at (508) 678-9000. Please specify the dryer model number and serial number in addition to the description and part number, so that your order is processed accurately and promptly.

The illustrations on the following pages may not depict your particular dryer exactly. The illustrations are a composite of the various dryer models. Be sure to check the descriptions of the parts thoroughly before ordering.

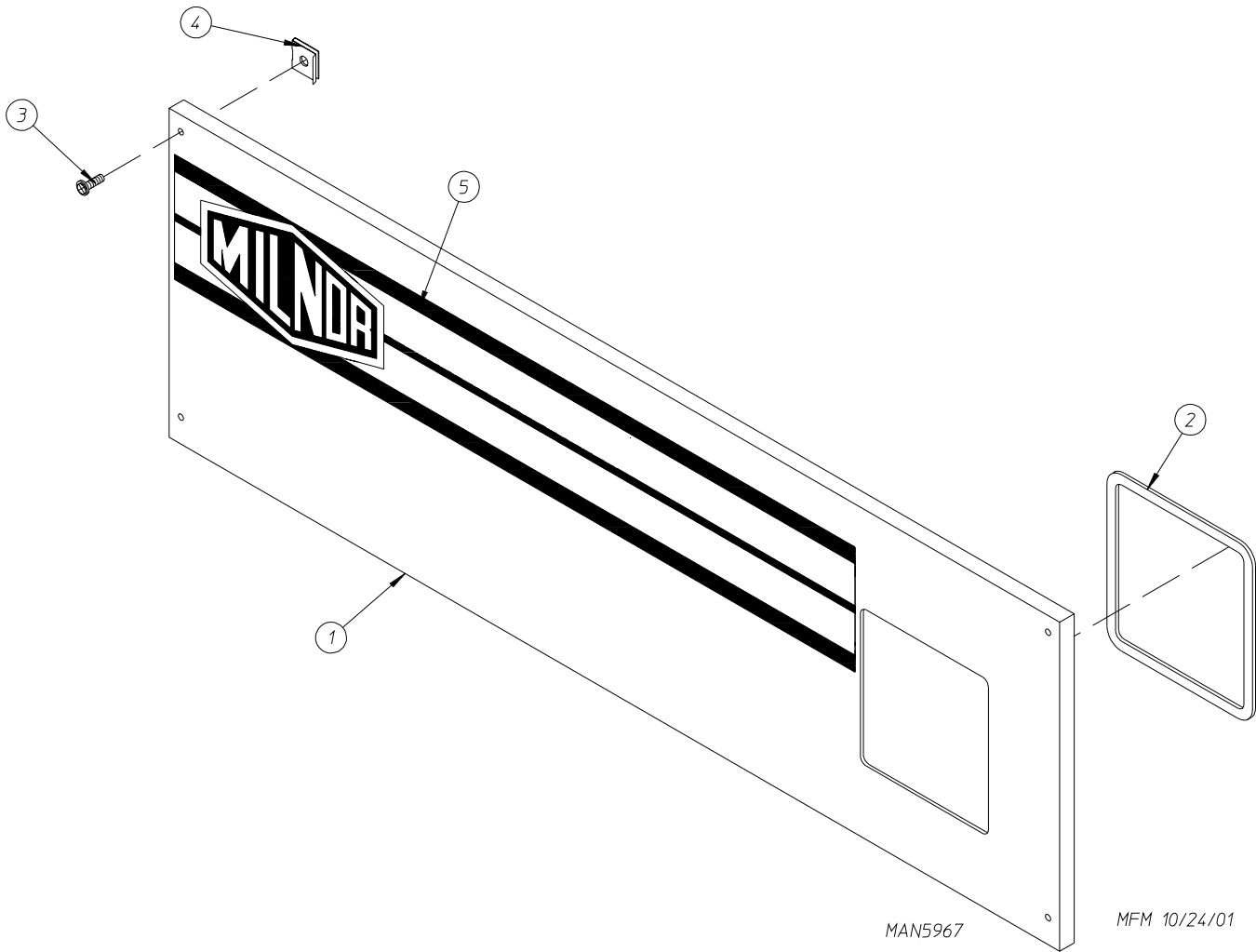
### **“IMPORTANT NOTE TO PURCHASER”**

Information must be obtained from your local gas supplier on the instructions to be followed if the user smells gas. These instructions must be posted in a prominent location near the dryer.

# Table of Contents

Control Door Assembly .....	4
Phase 7 Non-Coin Microprocessor Control Panel Assembly .....	5
Dual Timer “Tap Touch” Controls .....	6
Dual Timer Control Panel Assembly .....	7
Dual Timer Control Box Assembly .....	8
Front Panel / Main Door Assemblies .....	10
Main Door Assembly .....	12
Main Door Switch .....	13
Lint Drawer / Lint Drawer Switch Box Assemblies for Models Mfd. as of April 12, 2003 .....	14
Lint Drawer / Lint Drawer Switch Box Assemblies for Models Mfd. prior to April 12, 2003 .....	15
Lint Door Assembly .....	16
Microprocessor Controller (Computer) Temperature Sensor Bracket Assembly .....	17
Dual Timer Temperature Sensor Bracket Assembly .....	18
Tumbler / Support Assemblies .....	19
Tumbler Bearing Mount Assembly .....	20
Idler Bearing Mount Assembly .....	21
Tumbler Drive Motor Mount Assembly .....	22
Blower Motor Mount Assembly .....	23
Direct Spark Ignition Burner Assembly for Gas Models ONLY .....	24
60 kW 208-240 Volt Electric Oven Assembly .....	26
60 kW 380-416 / 480 Volt Electric Oven Assembly .....	28
72 kW 208-240 Volt Electric Oven Assembly .....	30
72 kW 380-416 / 480 Volt Electric Oven Assembly .....	32
208-240 Volt Oven Relay Box Assembly .....	34
380-480 Volt Oven Relay Box Assembly .....	35
Sail Switch Assembly .....	36
Steam Damper Assembly .....	37
Phase 7 Reversing Relay Panel Assembly .....	38
Dual Timer Reversing Relay Mounting Panel Assembly .....	39
Fire Suppression System Solenoid Assembly for Models Mfd. as of September 23, 2004 .....	40
Fire Suppression System Solenoid Assembly for Models Mfd. prior to September 23, 2004 .....	41
Fire Suppression System Temperature Probe Assembly .....	42
Back Guard Assembly .....	43
Additional Parts Available .....	44

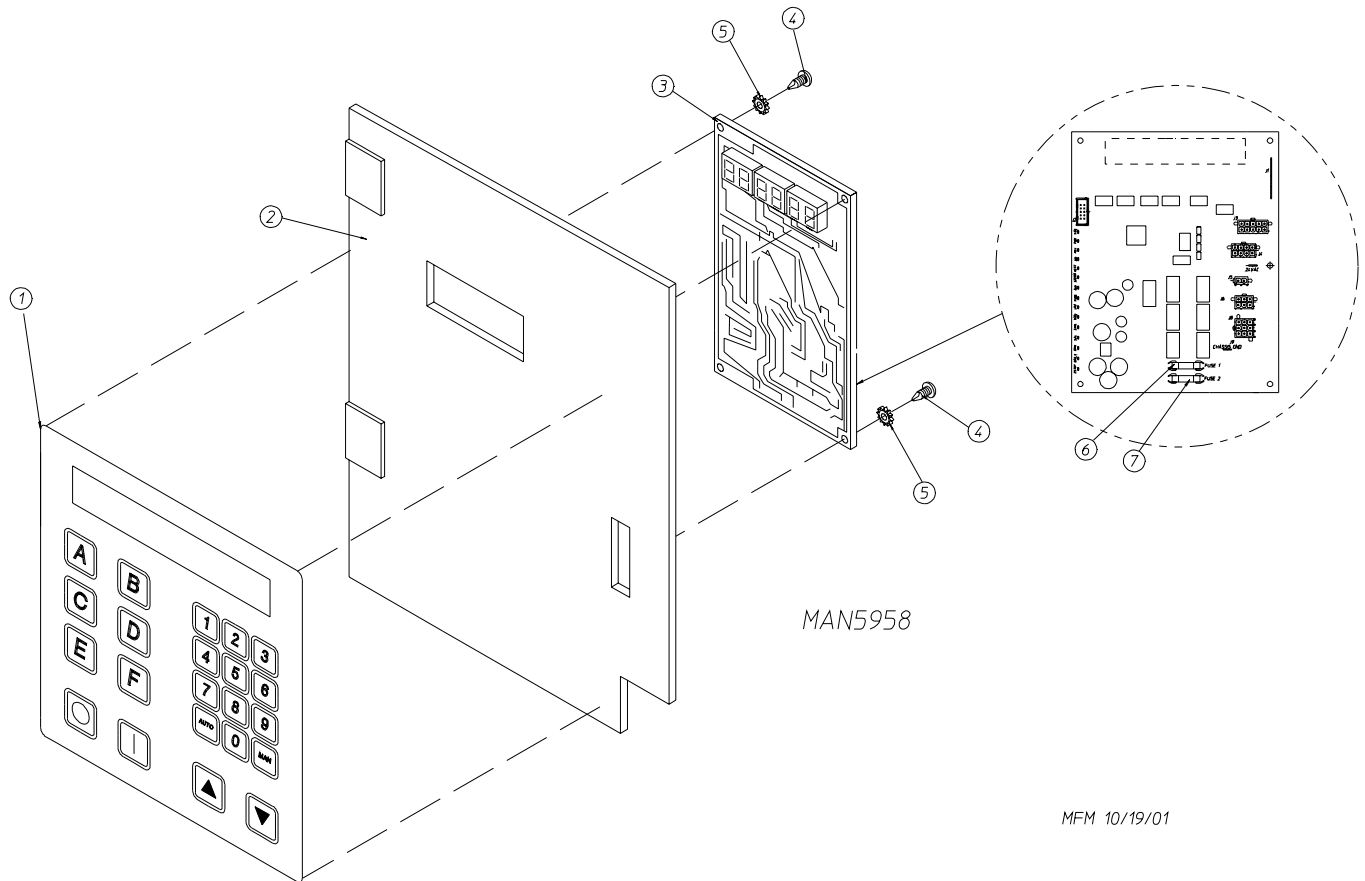
# Control Door Assembly



Illus. No.	Part No.	Qty.	Description
1	825333*	1	Phase 7 Control Door without Hinge
2	117604	3	1/8" x 3/8" Neoprene Sponge Tape (sold by the foot)
3	150321	4	#10-32 x 1/2" Screw
4	154011	4	#10-32 Multi-Thread U-Nut
5	112373	1	Milnor Logo

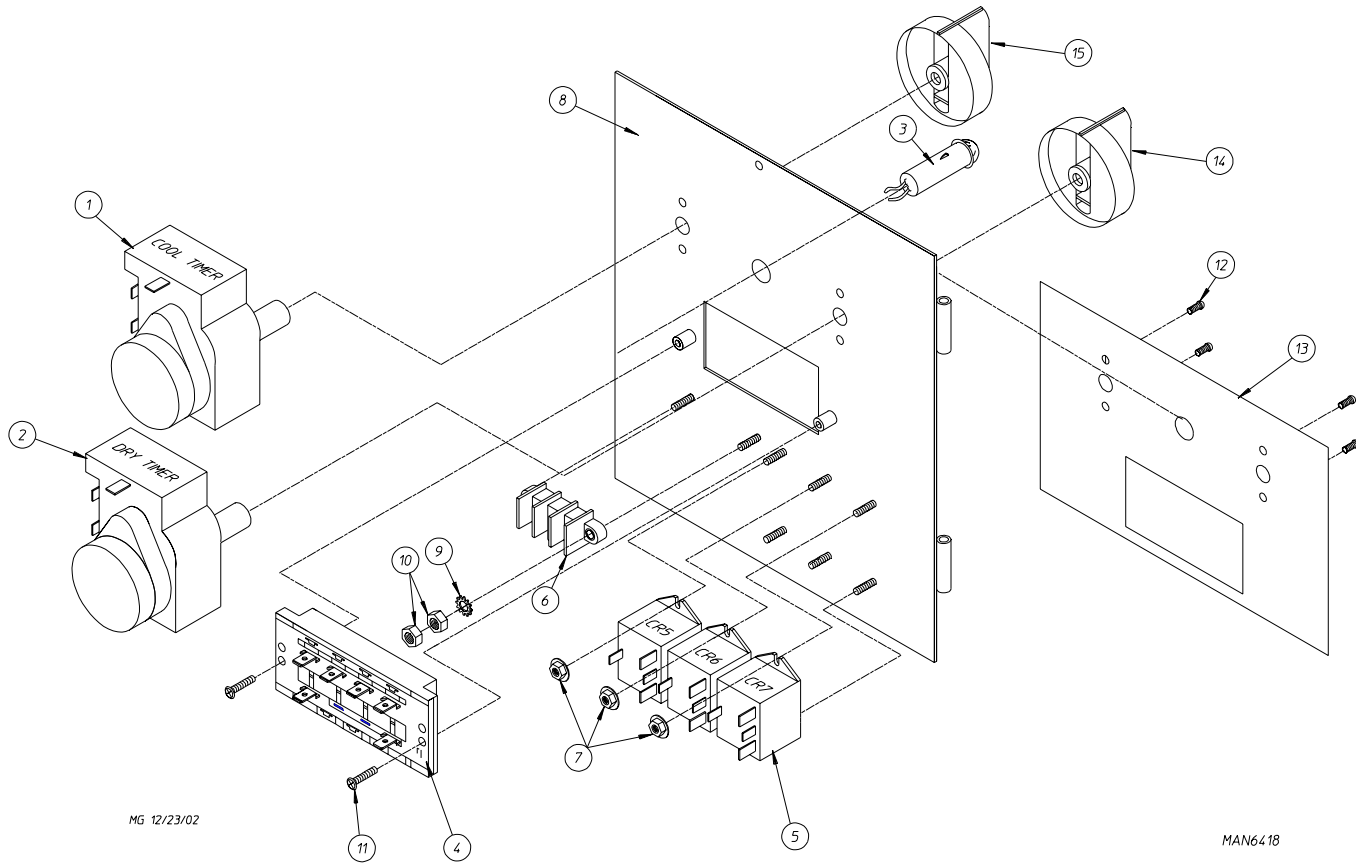
\* Specify color when ordering.

# Phase 7 Non-Coin Microprocessor Control Panel Assembly



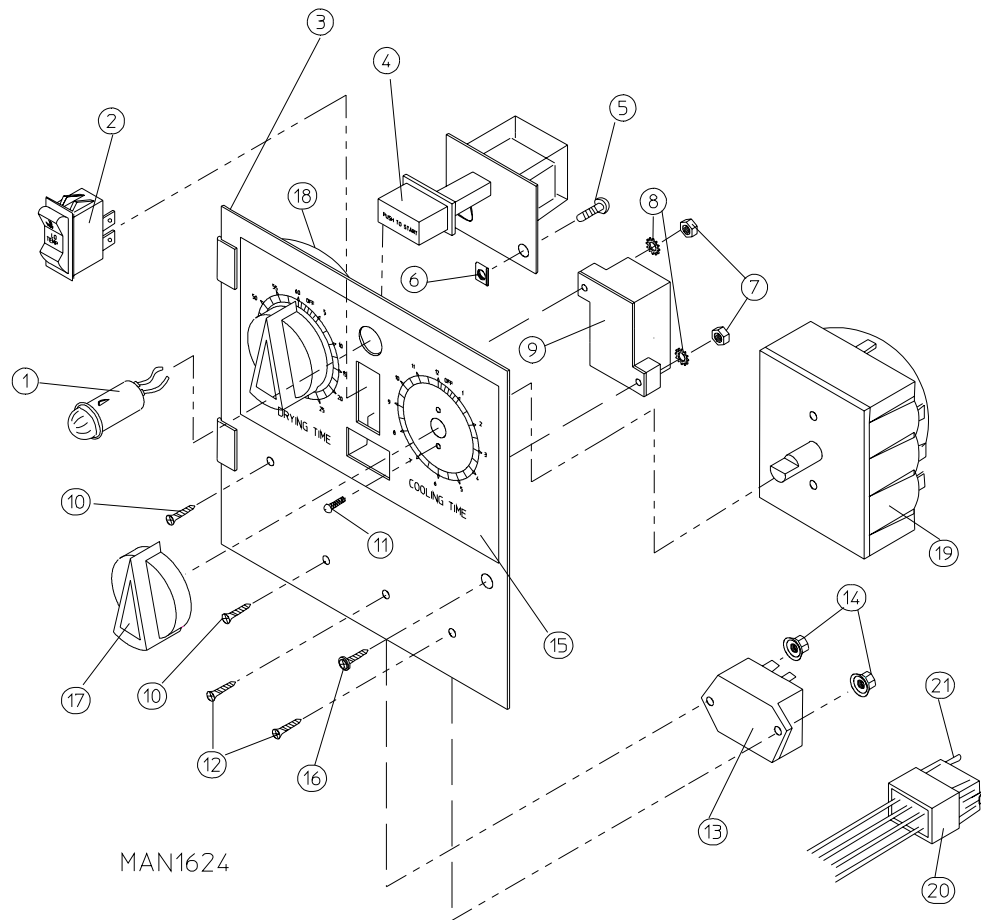
<u>Illus. No.</u>	<u>Part No.</u>	<u>Qty.</u>	<u>Description</u>
1	112577	1	Phase 7 Non-Coin Keypad
2	850979	1	Phase 7 Microprocessor Controller (computer) Panel ONLY
3	887004	1	Phase 7 Microprocessor Controller with Fire Suppression System (for models mfd. as of December 1, 2003)
	887001	1	Phase 7 Microprocessor Controller with Fire Suppression System (for models mfd. prior to December 1, 2003)
	887024	1	Phase 7 Microprocessor Controller without Fire Suppression System
4	150005	4	#6-32 x 3/4" Phillips Round Head Machine Screw
5	153010	4	#6 Star Washer
6	136097	1	500-mA Fuse
7	136016	1	5-amp Fuse

# Dual Timer "Tap Touch" Controls



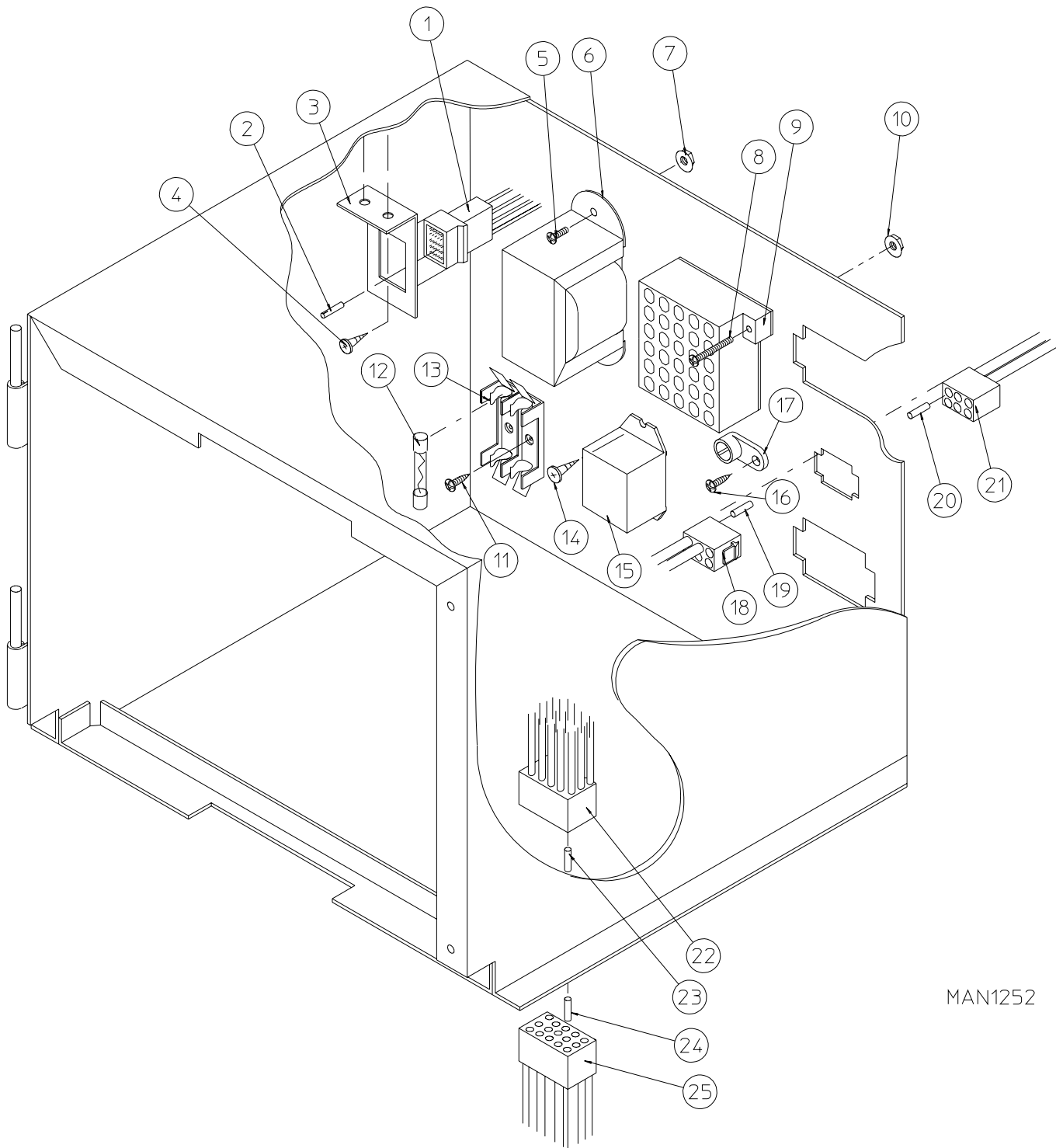
<u>Illus. No.</u>	<u>Part No.</u>	<u>Qty.</u>	<u>Description</u>
1	124028	1	15 Minute Timer – 24 VAC
2	824299	1	60 Minute Timer – 24 VAC
3	824175	1	Red Pilot Light – 24 VAC
4	122301	1	"Tap Touch" Switch
5	131932	3	Relay SPST 24 Volt
6	120708	1	Terminal Closed Block
7	151000	6	#6-32 Pal Nut
8	824067	1	Dual Timer Panel ONLY
9	153010	2	#6 Star Washer
10	152000	2	#6-32 Hex Nut
11	150207	2	#10-24 x 1/2" Phillips Pan Head Machine Screw
12	150110	4	#8-32 x 1/4" Phillips Round Head Machine Screw
13	112563	1	Dual Timer Panel Overlay
14	124104	1	Pure Touch Knob with Red Pointer
15	124105	1	Pure Touch Knob with Blue Pointer
—	824296	1	Dual Timer Panel Complete Assembly (includes illus. nos. 1 through 15)

# Dual Timer Control Panel Assembly



Illus. No.	Part No.	Qty.	Description
1	123005	1	Red Indicator Light – 24 VAC
2	122400	1	Rocker Heat Selector Switch
3	880838	1	Dual Timer Control Panel Assembly Complete – 24 VAC (includes illus. nos. 1 through 15 and 17 through 21)
	880837	1	Dual Timer Control Panel ONLY
4	131917	1	Push-to-Start Relay – 24 VAC
5	150207	2	#10-24 x 1/2" Phillips Round Head Machine Screw
6	154001	2	#10-24 Speed Nut
7	152000	2	#6-32 Hex Nut
8	153010	2	#6 Star Washer
9	120731	1	30-Position Terminal Block
10	153565	2	#6-32 x 1" Clinch Stud
11	150110	4	#8-32 x 1/4" Phillips Round Head Machine Screw
12	153560	2	#6-32 x 1/2" Clinch Stud
13	131931	1	Dual Timer Relay – 24 VAC
14	151000	1	#10-16 x 1/2" Pal Nut
15	112050	1	Dual Timer Label ONLY
16	150309	1	#10-16 x 1/2" Hex Head TEK Crimptite Screw
17	124103	2	Arrow Timer Knob
18	824299	1	60 Minute Timer – 24 VAC
19	124028	1	15 Minute Timer – 24 VAC
20	122602	1	9-Pin Connector ONLY
21	122700	7	Pin Terminal ONLY
—	122801	1	Pin / Socket Extraction Tool

# Dual Timer Control Box Assembly



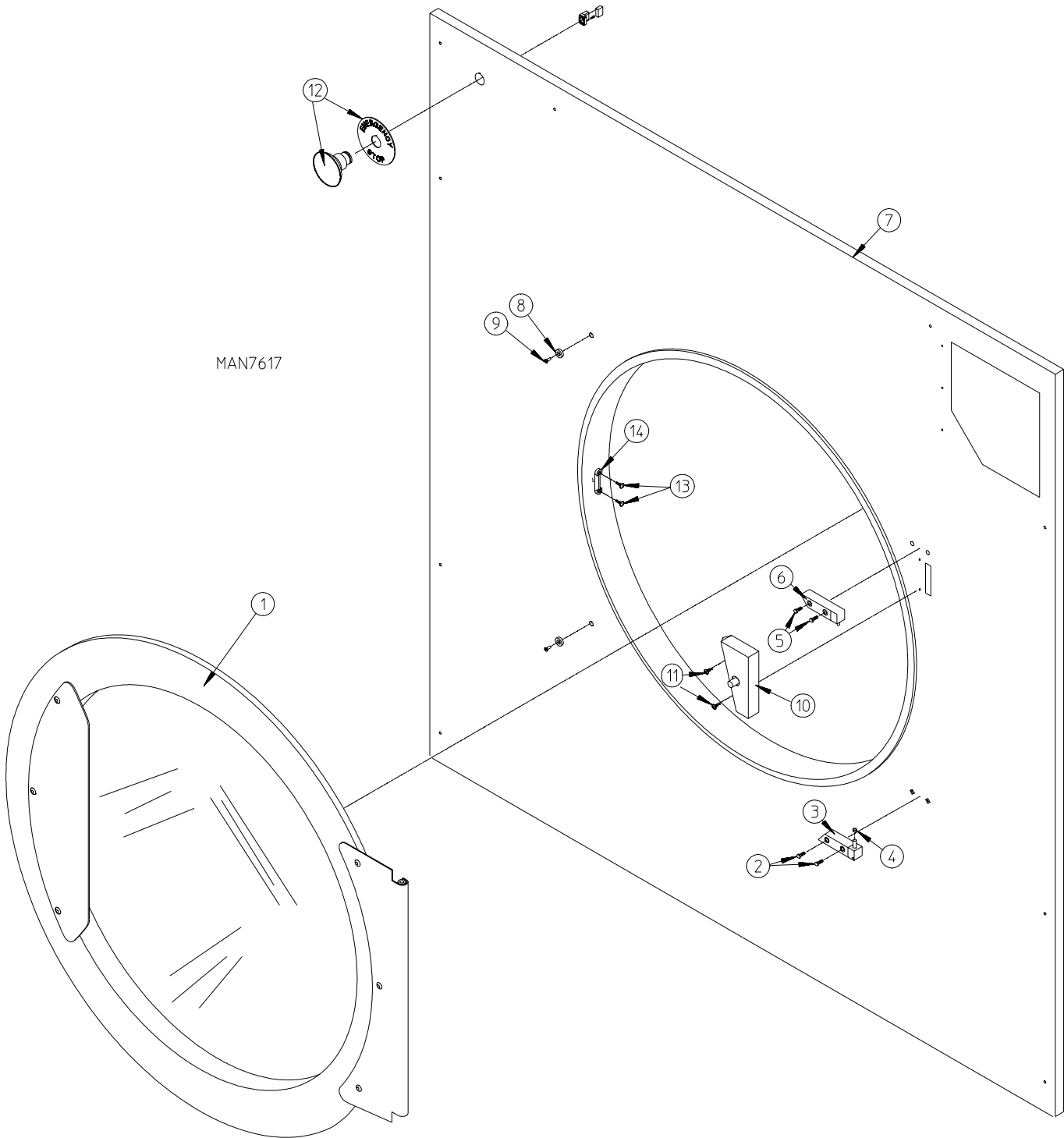
MAN1252



<u>Illus. No.</u>	<u>Part No.</u>	<u>Qty.</u>	<u>Description</u>
1	122603	1	9-Pin Socket Connector
2	122701	7	Socket Terminal
	122801	1	Pin / Socket Extraction Tool
3	315010	1	9-Pin Connector Bracket
4	150300	2	#10-16 x 1/2" Hex Washer TEK Screw
5	150108	2	#8-32 x 1/2" Phillips Round Head Machine Screw
6	132109	1	24 VAC Transformer – 50/60 Hz (for gas models and steam models)
7	151001	2	#8-23 Pal Nut
8	150002	2	#6-32 x 1" Phillips Round Head Machine Screw
9	120715	1	30-Position Terminal Block
10	151000	2	#6-32 Pal Nut
11	150102	*	#8 x 3/8" Phillips Round Head TEK Screw
12	136057	2	1/2-amp (Slo-Blo) Fuse
	182453	1	6-amp (fast acting) Fuse (for electric models)
13	136008	*	Fuse Block / Strip
14	150313	2	#10-16 x 1/2" TORX® Crimptite Screw
15	131932	1	24 VAC Relay (for electric models)
16	150313	1	#10-16 x 1/2" TORX® Crimptite Screw
17	121010	1	L-70 Ground Lug
18	122631	1	6-Pin Connector
19	122705	*	Socket Terminal
20	122704	*	Pin Terminal
21	122630	1	6-Pin Connector
	137025	1	6/15-Position Strain Relief ... Not Illustrated
22	122625	1	15-Pin Connector
23	122704	12	Pin Terminal
24	122705	12	Socket Terminal
25	122626	1	15-Pin Socket Connector
—	122801	1	Pin / Socket Extraction Tool

\* As required (either 2 or 3).

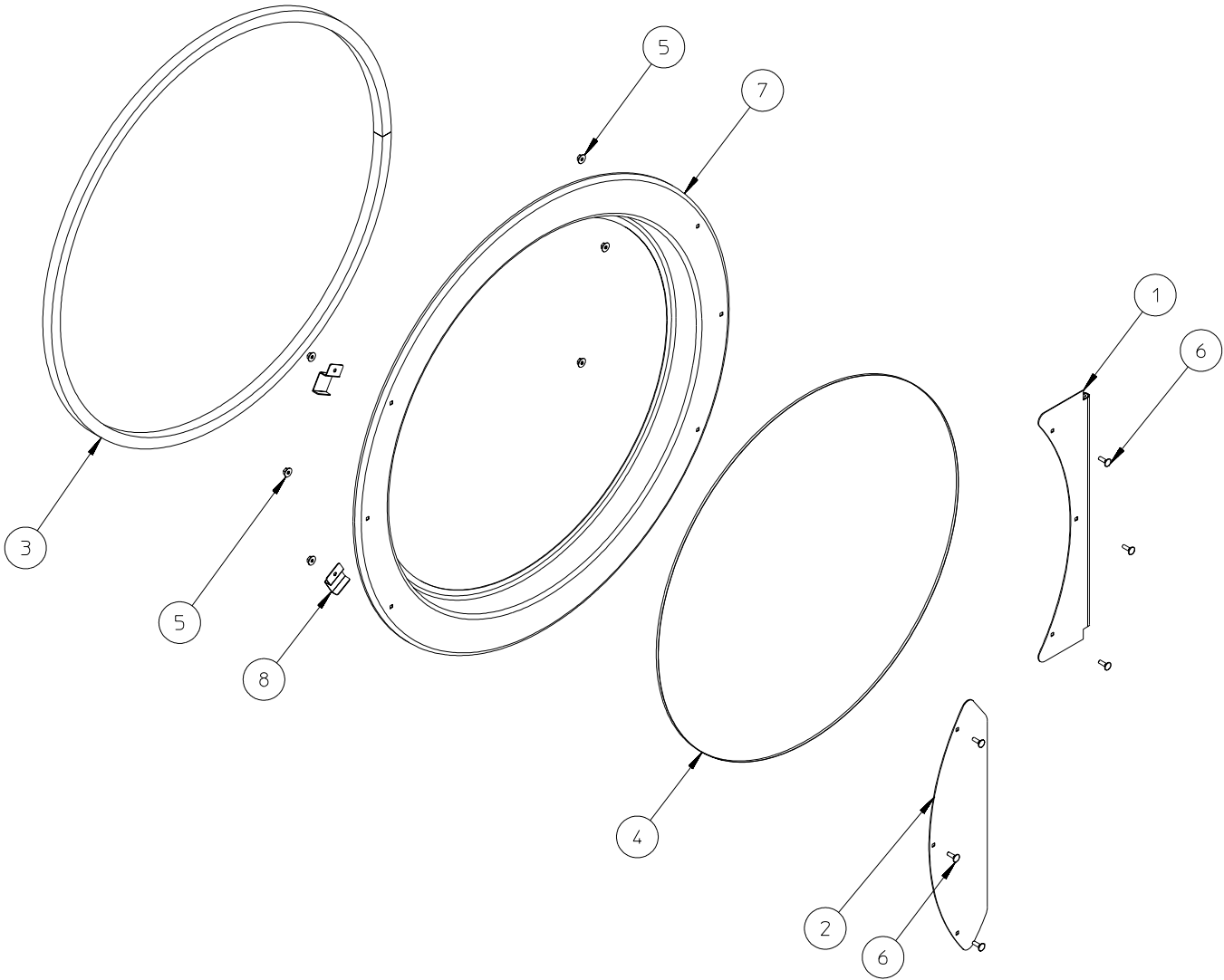
# Front Panel / Main Door Assemblies



<u>Illus. No.</u>	<u>Part No.</u>	<u>Qty.</u>	<u>Description</u>
1	801600*	1	Cold Rolled Steel Main Door Assembly (for models mfd. as of September 10, 2005) <b>(refer to Main Door Assembly on page 12)</b>
	835003*	1	Cold Rolled Steel Main Door Assembly (for models mfd. prior to September 10, 2005) <b>(refer to Main Door Assembly on page 12)</b>
2	150443	2	Socket Cap Screw
3	170331*	1	Bottom Hinge Block
4	153031	1	Nylon Washer
5	150443	2	Socket Cap Screw
6	170329*	1	Top Hinge Block
7	801623*	1	Front Panel Assembly (for models mfd. as of September 10, 2005)
	801625	1	Stainless Steel Front Panel Assembly (for models mfd. as of September 10, 2005)
	802040*	1	Front Panel Assembly with E-Stop (for models mfd. as of September 10, 2005)
	800492*	1	Front Panel Assembly (for models mfd. prior to September 10, 2005)
	800992	1	Stainless Steel Front Panel Assembly (for models mfd. prior to September 10, 2005)
	825411*	1	Front Panel Assembly with E-Stop (for models mfd. prior to September 10, 2005)
8	102004	2	Magnet (for models mfd. as of September 10, 2005)
9	152223	2	T-20 TORX® Screw (for models mfd. as of September 10, 2005)
10	801786*	1	Milnor Main Door Switch and Housing for Round Door <b>(refer to Main Door Switch on page 13)</b>
11	150301	2	#8 x 7/16" Phillips Head TEK Screw
12	887179	1	E-Stop Assembly
13	154215	2	5/32" Pop Rivet (for models mfd. prior to September 10, 2005)
14	170330	1	Friction Door Latch (for models mfd. prior to September 10, 2005)
—	116252	1	Top Front Panel Insulation ... Not Illustrated
—	116253	1	Bottom Front Panel Insulation ... Not Illustrated

\* Specify color when ordering.

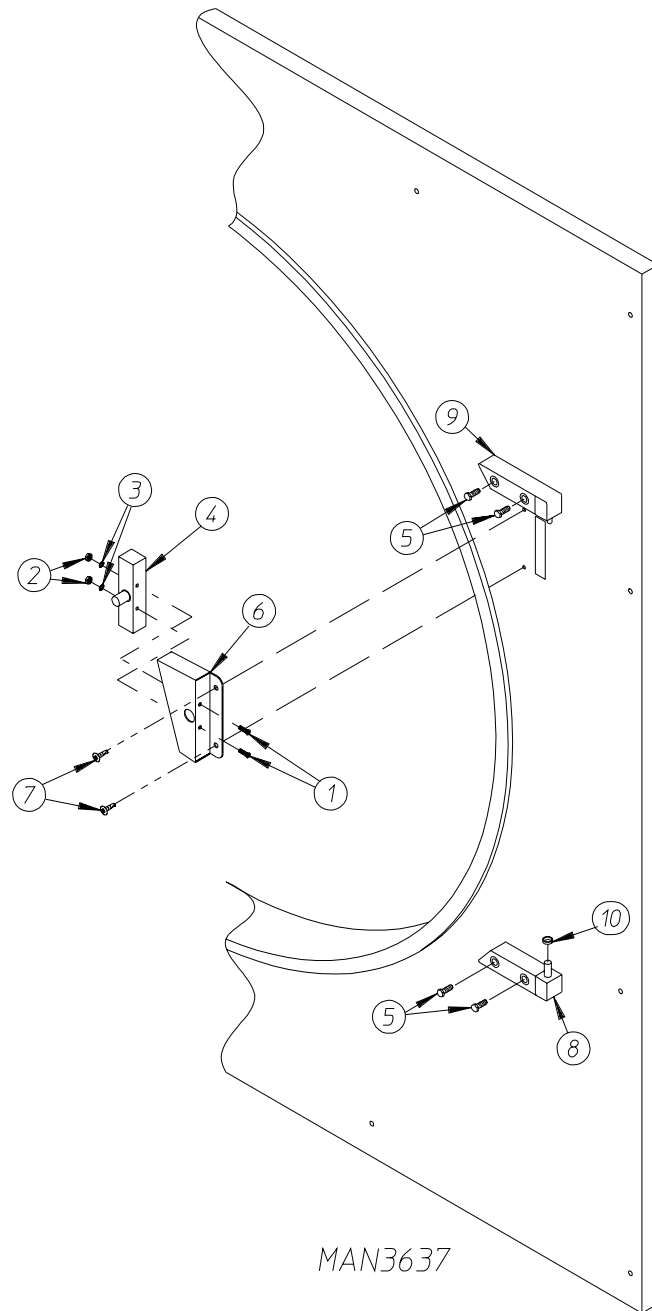
# Main Door Assembly



JCARRITA 1/2/08

MAN7532

<u>Illus. No.</u>	<u>Part No.</u>	<u>Qty.</u>	<u>Description</u>
1	835128	1	Main Door Hinge
2	314729	1	Main Door Handle
3	882411	1	Door Gasket
	401038	1	Black Adhesive (10.3 oz. cartridge)
4	102221	1	Door Glass
	401038	1	Black Adhesive (10.3 oz. cartridge)
5	152014	6	1/4-20 Free Spin Wash Nut
6	150683	6	1/4-20 x 5/8" Carriage Bolt
7	801600	1	Main Door Assembly Complete (for models mfd. as of September 10, 2005)
	835003	1	Main Door Assembly Complete (for models mfd. prior to September 10, 2005)
8	185522	2	Main Door Magnet Bracket (for models mfd. as of September 10, 2005)

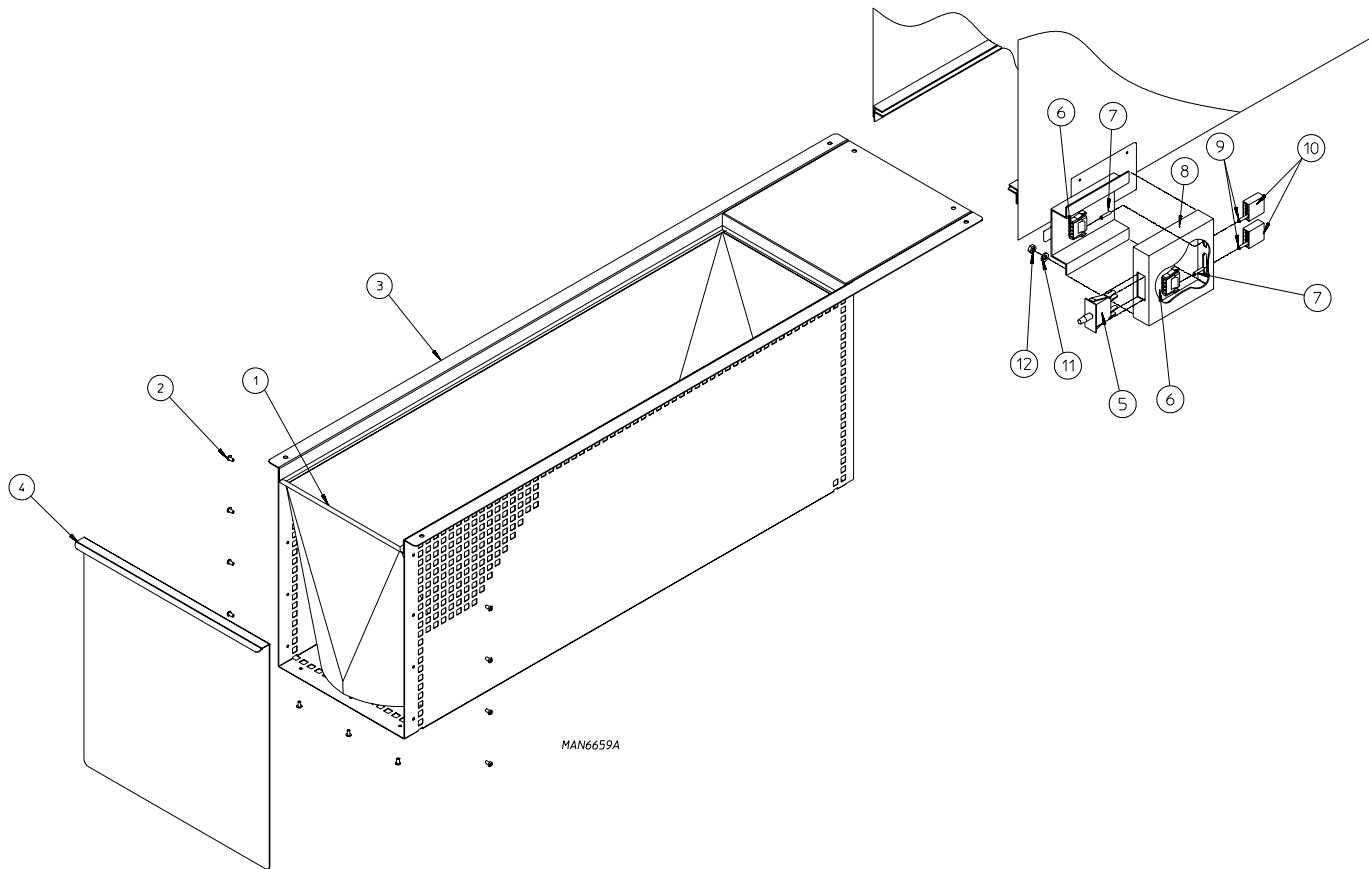


Illus. No.	Part No.	Qty.	Description
1	150006	2	#6-32 x 7/8" Phillips Pan Head Machine Screw
2	152013	2	#6-32 Hex Nut
3	153010	2	#6 Star Washer
4	137005	1	Single-Pole Door Switch
5	150443	4	1/4-20 x 3/4" Stainless Steel Cap Screw
6	801786*	1	Main Door Switch with Housing Assembly (white) (includes illus. nos. 1 through 4)
7	150201	2	#10-32 x 1/4" Phillips Pan Head Screw
8	170331*	1	Bottom Hinge Block
9	170329*	1	Top Hinge Block
10	153031	1	Nylon Washer

\* Specify color when ordering.

# Lint Drawer / Lint Drawer Switch Box Assemblies

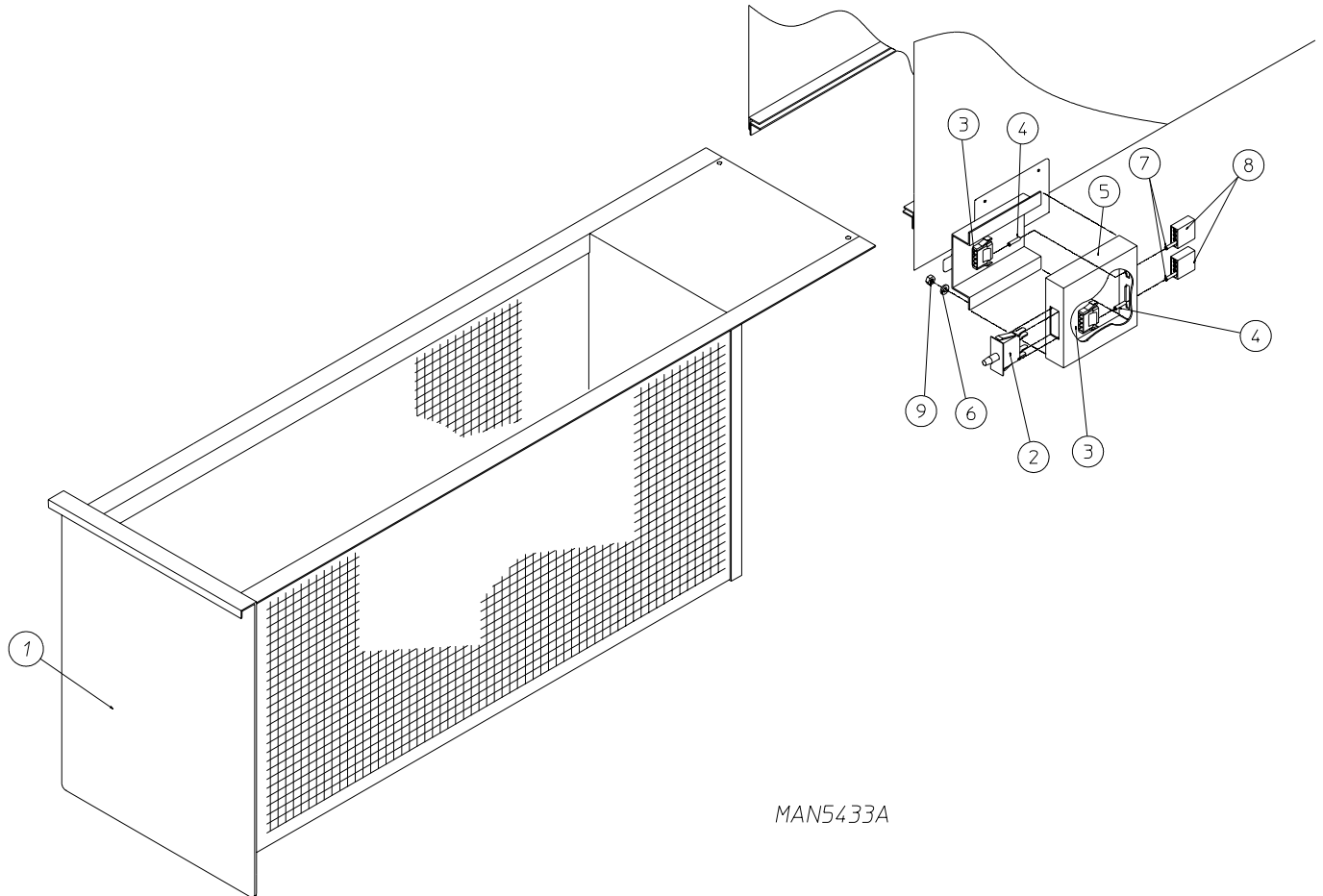
For Models Mfd. as of April 12, 2003



Illus. No.	Part No.	Qty.	Description
1	820017	1	Lint Bag
2	154211	11	Button Head Rivet
3	850950	1	Lint Drawer Assembly (includes illus. nos. 1 through 4)
	850967	1	Stainless Steel Lint Drawer Assembly (includes illus. nos. 1 through 4)
4	801137	1	Lint Drawer Handle
	801138	1	Stainless Steel Lint Drawer Handle
5	122116	1	Lint Drawer Switch
6	122605	2	4-Pin Socket Connector
7	122701	4	Socket Terminal
	122801	1	Pin / Socket Extraction Tool
8	820138	1	Lint Drawer Switch Box Assembly Complete (includes illus. nos. 5, 8, 11, and 12)
9	122700	4	Pin Terminal
10	122604	2	4-Pin Connector
11	153012	2	Washer
12	152001	2	Hex Nut

# Lint Drawer / Lint Drawer Switch Box Assemblies

For Models Mfd. prior to April 12, 2003

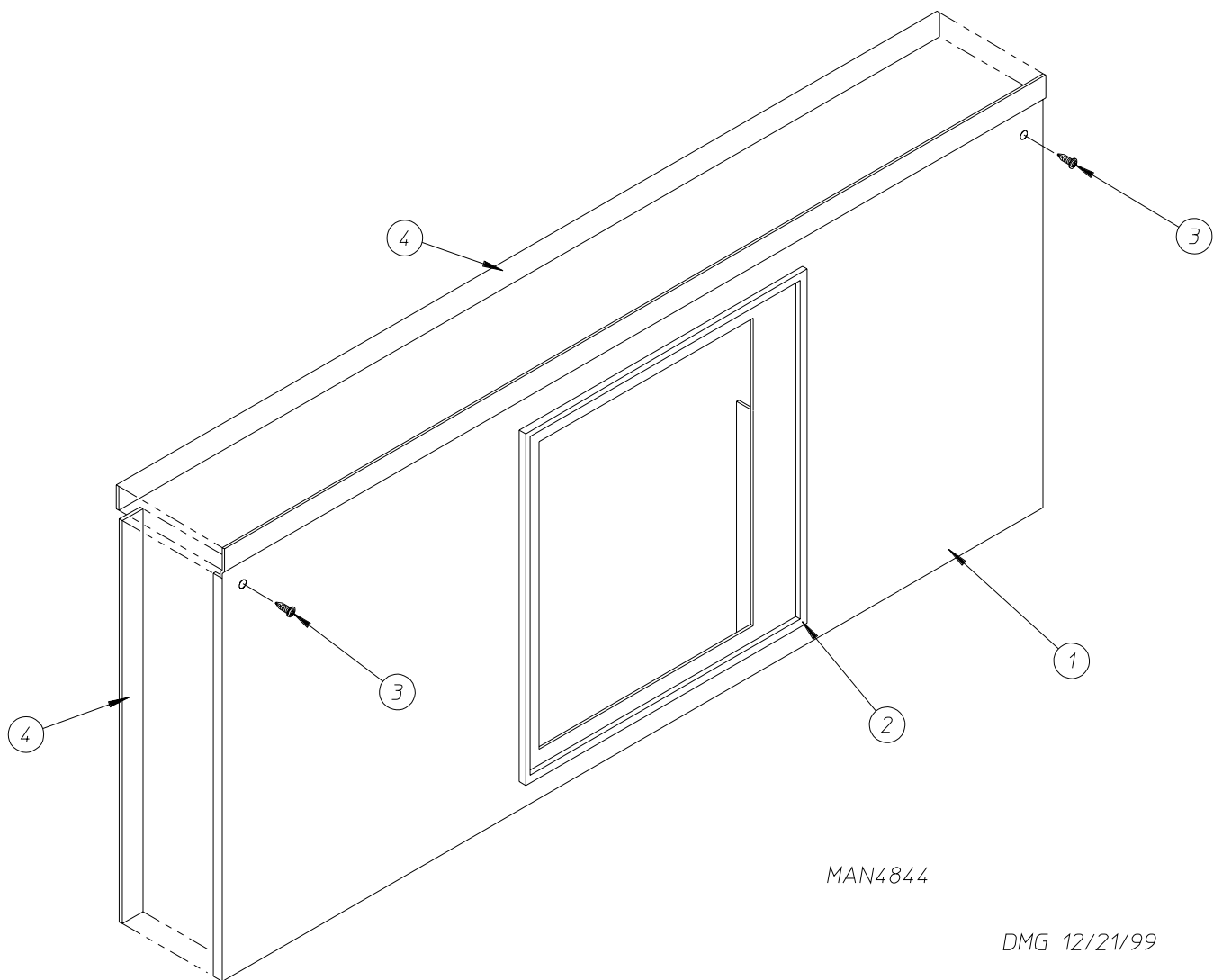


MAN5433A

Illus. No.	Part No.	Qty.	Description
1	802106*	1	Lint Basket Assembly
	850967	1	Stainless Steel Lint Basket Assembly
2	122116	1	Lint Drawer Switch
3	122605	2	4-Pin Socket Connector
4	122701	4	Socket Terminal
	122801	1	Pin / Socket Extraction Tool
5	820138	1	Lint Drawer Switch Box Assembly Complete (includes illus. nos. 2, 5, 6, and 9)
6	153012	2	Washer
7	122700	4	Pin Terminal
8	122604	2	4-Pin Connector
9	152001	2	Hex Nut

\* Specify color when ordering.

# Lint Door Assembly



MAN4844

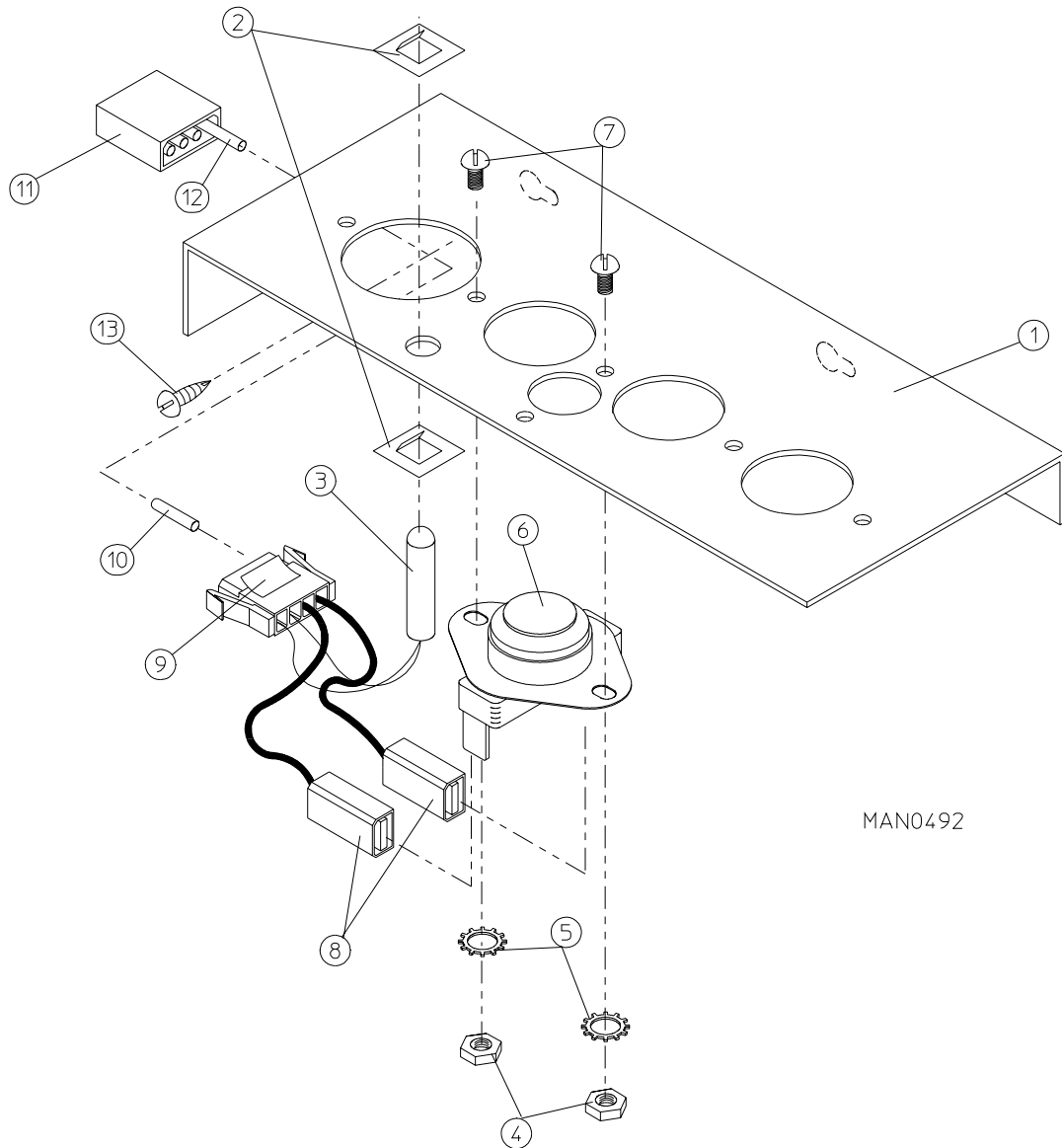
DMG 12/21/99

Illus. No.	Part No.	Qty.	Description
1	824256*	1	Lint Door Assembly (includes illus. nos. 1, 2, and 4)
	820021	1	Stainless Steel Lint Door Assembly (includes illus. nos. 1, 2, and 4)
2	117607	5	Neoprene Sponge Tape (sold by the foot)
3	150317	3	#10-16 x 3/4" TORX® Screw
4	117604	8	Gasket (sold by the foot)

\* Specify color when ordering.



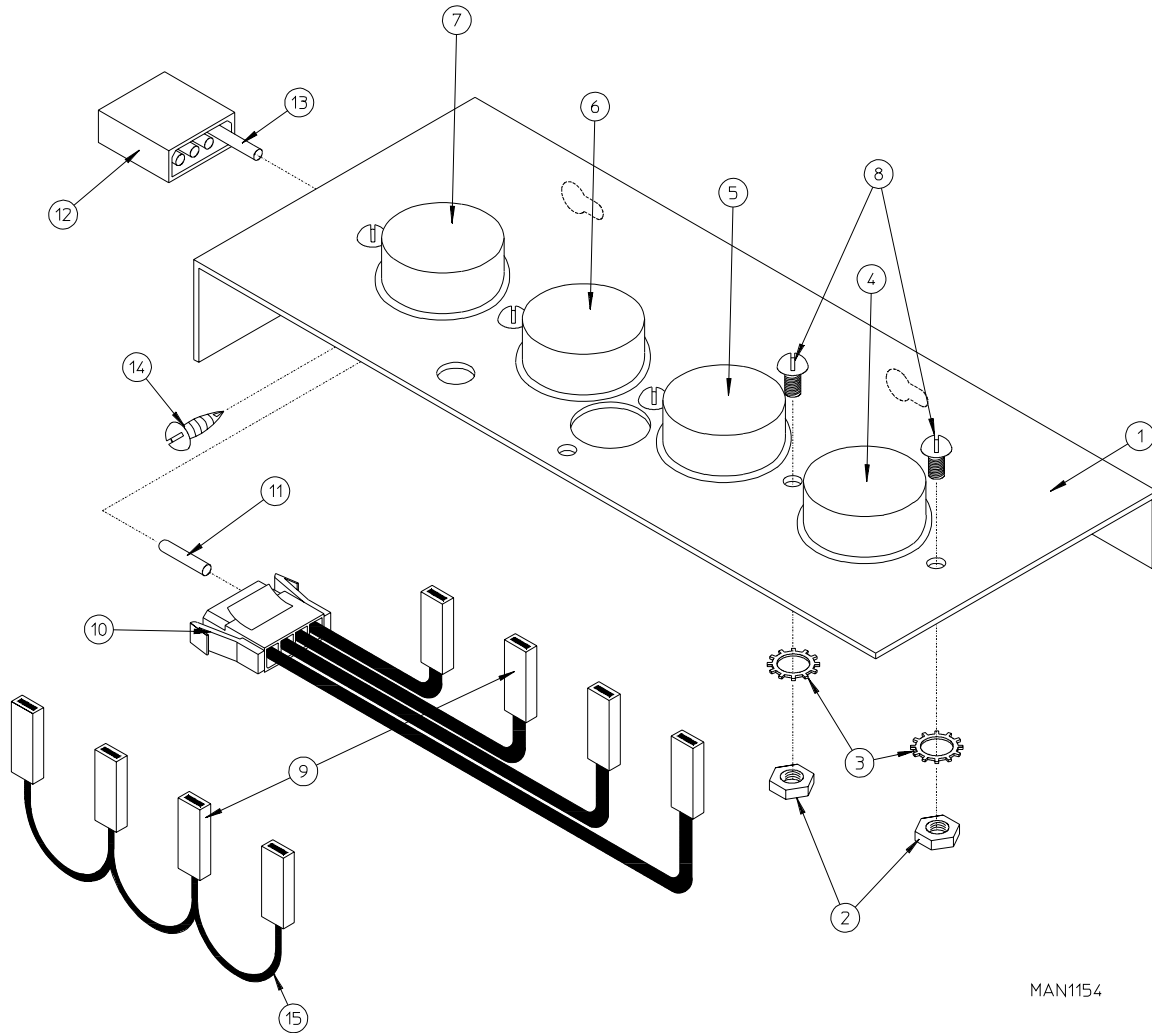
# Microprocessor Controller (Computer) Temperature Sensor Bracket Assembly



MAN0492

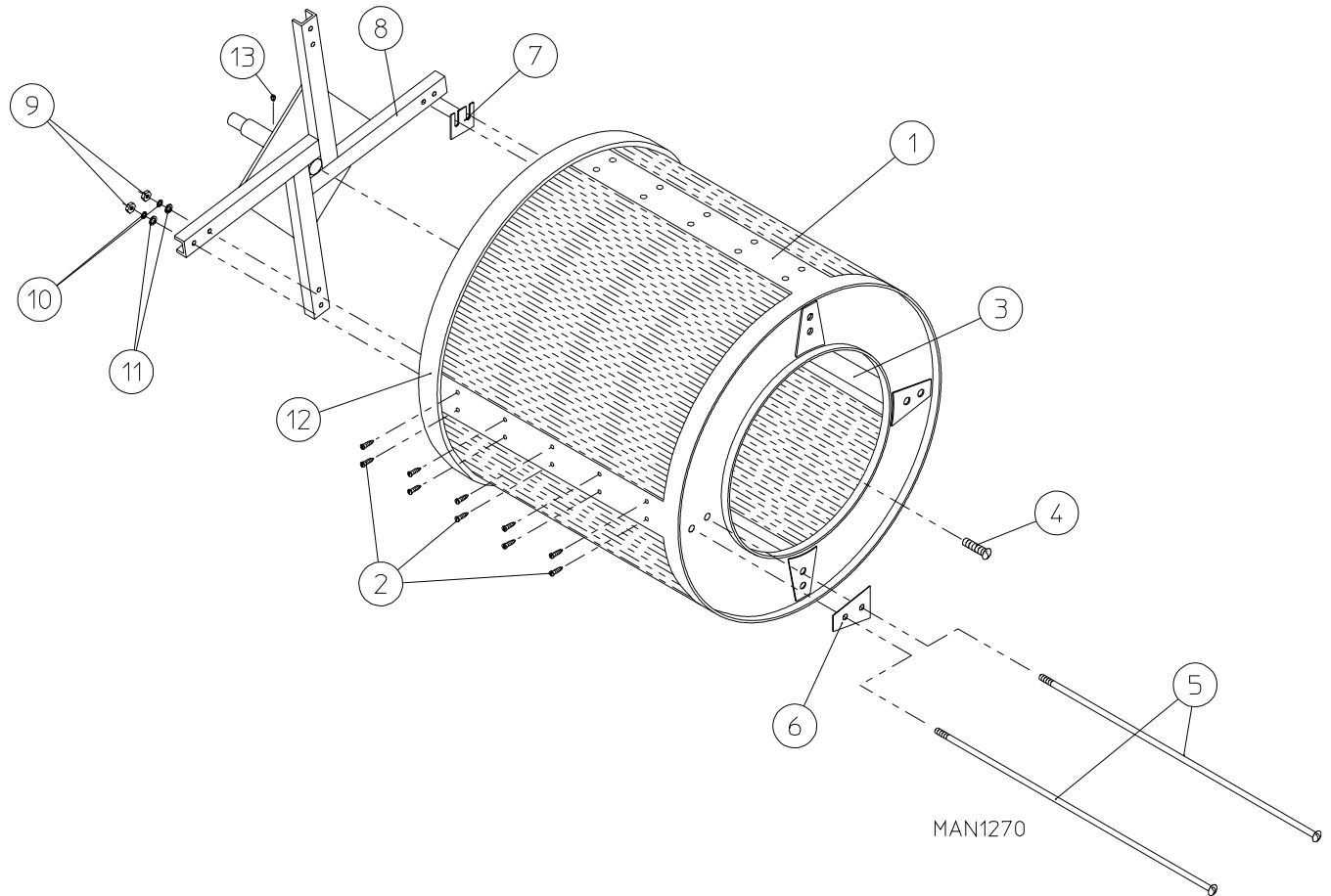
Illus. No.	Part No.	Qty.	Description
1	820022	1	Microprocessor Controller (computer) Temperature Sensor Bracket Assembly Complete (includes illus. nos. 1 through 10)
	331295	1	Temperature Sensor Bracket ONLY
2	154007	2	1/4" Tinnerman Push-On Fastener
3	880251	1	1/4" Temperature Sensor Probe Assembly (includes illus. nos. 2, 3, and 8 through 10)
4	152000	2	#6-32 Hex Nut
5	153010	2	#6 Star Washer
6	130112	1	225° Large Automatic Reset Thermostat
7	150005	2	#6-32 x 1/4" Round Head Machine Screw
8	121028	2	Insulated Terminal
9	122605	1	4-Pin Socket Connector
10	122701	4	Socket Terminal
11	122604	1	4-Pin Connector
12	122700	4	Pin Terminal
	122801	1	Pin / Socket Extraction Tool
13	150301	2	#8-18 x 7/16" Phillips Pan Head TEK Screw

# Dual Timer Temperature Sensor Bracket Assembly



MAN1154

Illus. No.	Part No.	Qty.	Description
1	801404	1	Dual Timer Sensor Bracket Assembly Complete (includes illus. nos. 1 through 11 and 15)
	331295	1	Sensor Bracket ONLY
2	152000	5	#6-32 Hex Nut
3	153010	5	#6 Star Washer
4	130103	1	225° Large Thermostat
5	130107	1	160° Large Thermostat
6	130109	1	140° Large Thermostat
7	130101	1	180° Large Thermostat
8	150005	5	#6-32 x 1/4" Phillips Round Head Machine Screw
9	121028	8	Insulated Terminal
10	122605	1	4-Pin Socket (female) Connector
	824724	1	Sensor Bracket Harness Assembly (includes illus. nos. 9 through 11 and 15)
11	122701	4	Socket Terminal
12	122604	1	4-Pin Connector
13	122700	4	Pin Terminal
	122801	1	Pin / Socket Extraction Tool
14	150301	2	#8-18 x 7/16" Phillips Pan Head TEK Screw
15	840065	1	Sensor Jumper Harness

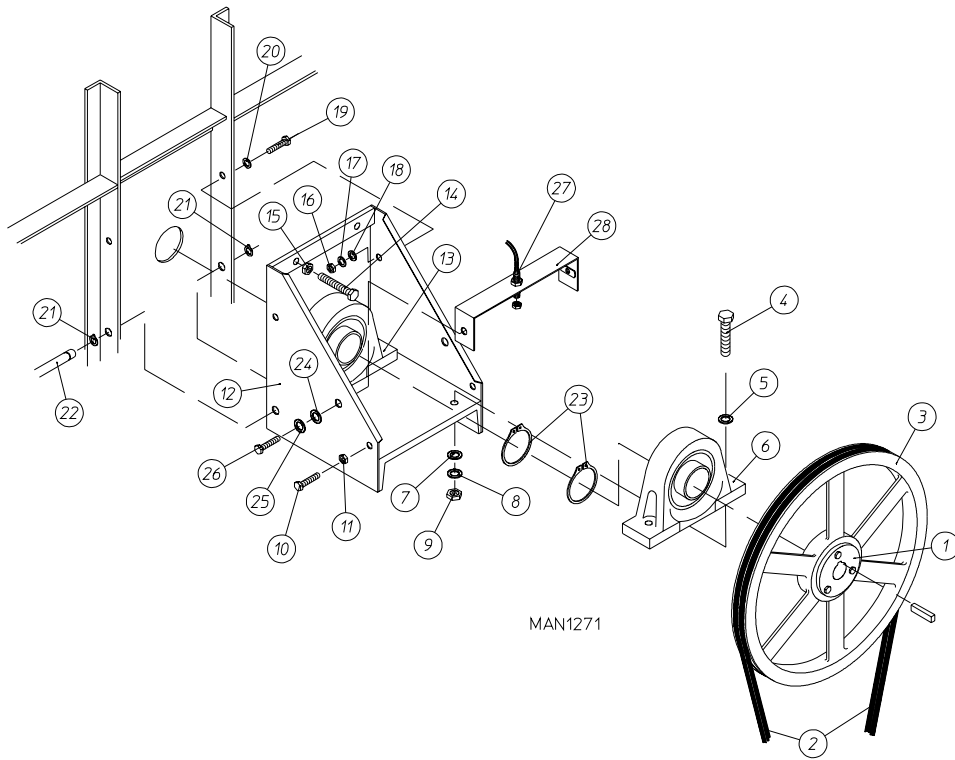


<u>Illus. No.</u>	<u>Part No.</u>	<u>Qty.</u>	<u>Description</u>
1	820110*	1	Tumbler ONLY without Felt Collar
	820111*	1	Stainless Steel Tumbler ONLY without Felt Collar
	820052	1	Tumbler and Support Assembly Complete (includes illus. nos. 1 through 13)
	820029	1	Stainless Steel Tumbler and Support Assembly Complete (includes illus. nos. 1 through 13)
2	150309	40	#10-16 x 1/2" Hex Head CrimpTite Screw
3	331105	4	Tumbler Rib
	331106	4	Stainless Steel Tumbler Rib
4	150407	1	5/16-18 x 3/4" Socket Button Head Screw
5	100910	8	1/2-13 x 44" Tie Rod
6	301700	4	Tumbler Reinforcing Plate
7	301701	**	Tumbler Shim
8	820116	1	Tumbler Support
9	152011	8	1/2-13 Hex Nut
10	153026	8	1/2" Lock Washer
11	153011	8	9/16" Flat Washer
12	116006	1	Felt Collar
	401010	1	#847 Adhesive for Felt Collar (5 oz. tube)
13	821002	1	Rotational Magnet Holder Assembly (for microprocessor models)

\* Felt collar is not included and must be ordered separately.

\*\* As required.

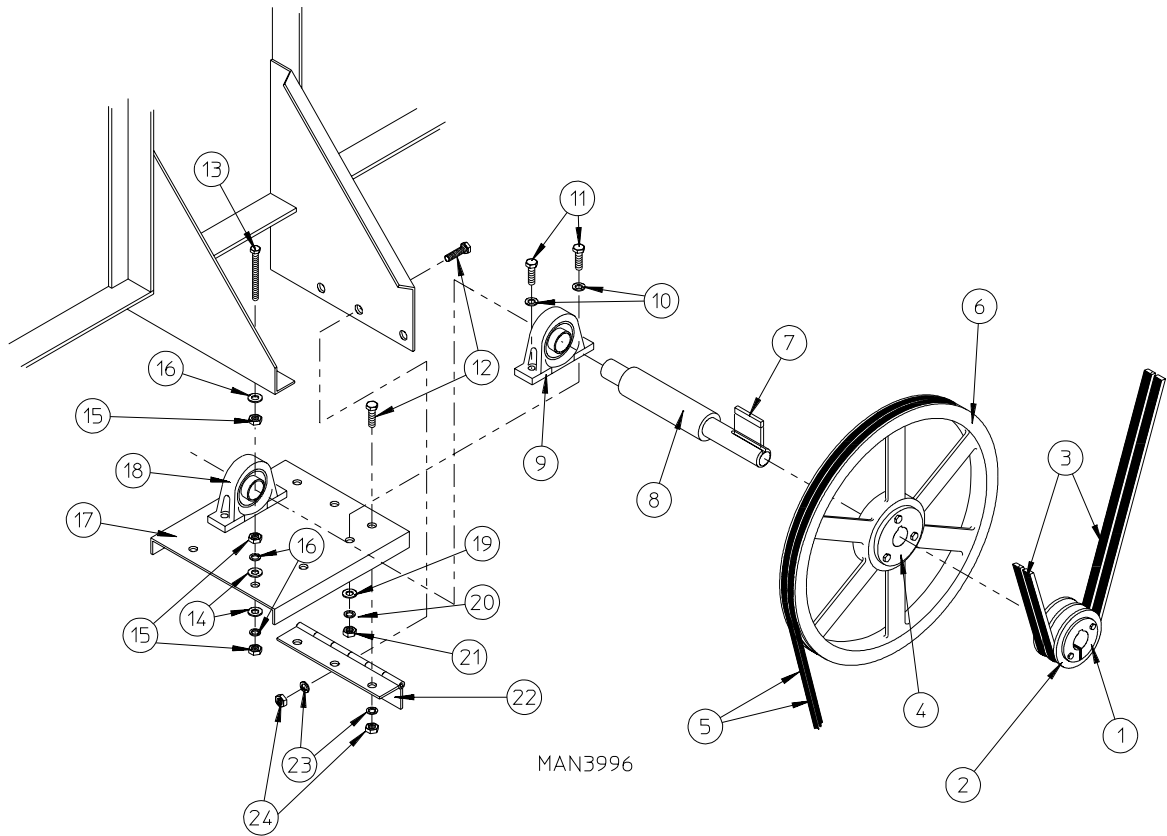
# Tumbler Bearing Mount Assembly



<u>Illus. No.</u>	<u>Part No.</u>	<u>Qty.</u>	<u>Description</u>
1	101137	1	2-1/4" SFX Bushing
2*	100135	2	AP-74 V-Belt
3	101136	1	20" Tumbler Pulley
4	150602	4	5/8-11 x 3" Hex Head Machine Bolt
5	153016	4	5/8" Flat Washer
6	880204	1	2-1/4" Pillow Block Bearing
7	153016	4	5/8" Flat Washer
8	153015	4	5/8" Lock Washer
9	152010	4	5/8-11 Hex Nut
10	150600	2	3/8-16 x 1-1/2" Hex Head Machine Bolt
11	152005	2	3/8-16 Hex Nut
12	801102	1	Tumbler Bearing Mount Assembly (includes illus. nos. 4 through 13)
13	880204	1	2-1/4" Pillow Block Bearing
14	150603	2	1/2-13 x 3" Square Head Machine Bolt
15	152011	2	1/2-13 Hex Nut
16	152005	2	3/8-16 Hex Nut
17	153005	2	3/8" Lock Washer
18	153004	4	3/8" Flat Washer
19	150600	2	3/8-16 x 1-1/2" Hex Head Machine Bolt
20	153004	2	3/8" Flat Washer
21	100801	2	5/8" Retaining Ring
22	301810	1	5/8" Hinge Pin
23	100811	2	2-1/4" Retaining Ring
24	153018	2	1/4" Flat Washer
25	153007	2	1/4" Lock Washer
26	150512	2	1/4-20 x 1/2" Hex Head Machine Bolt
27	822735	1	Rotational Sensor Assembly
28	820098	1	Rotational Sensor Mounting Bracket

\* Replace in matched sets (both belts).

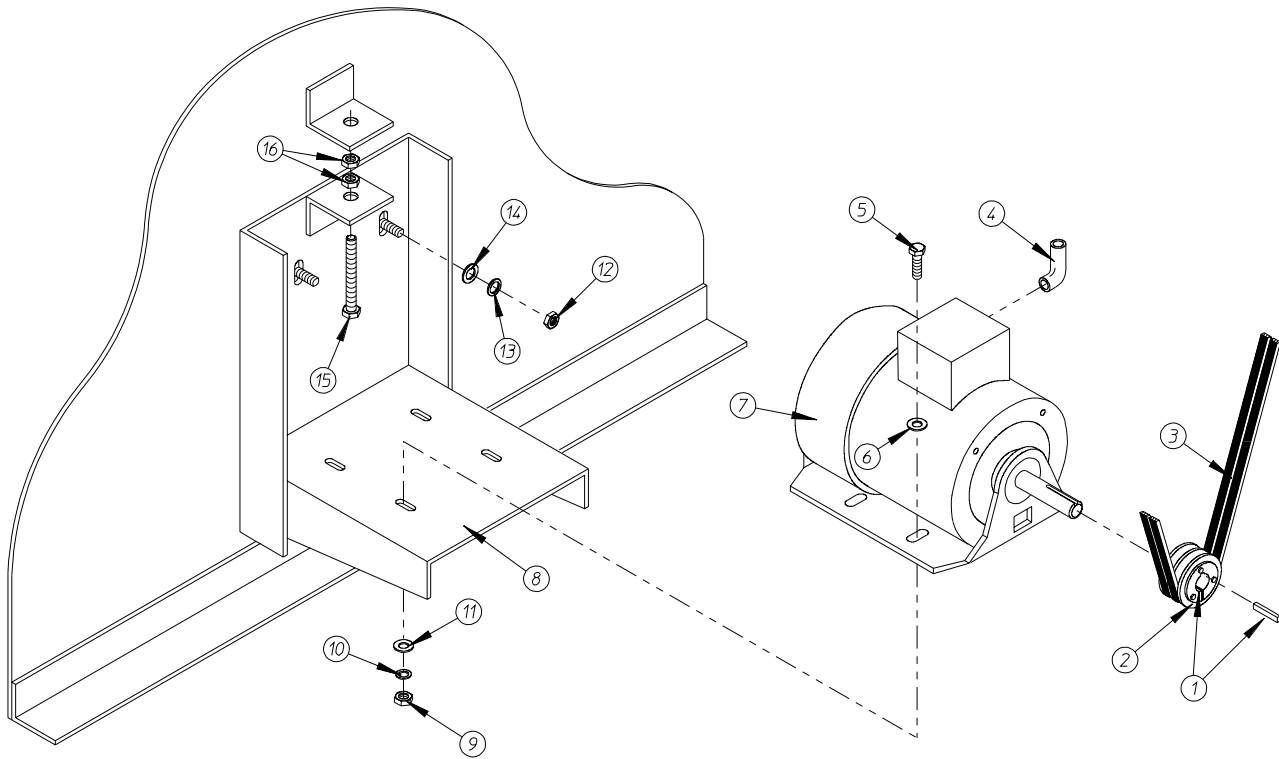
# Idler Bearing Mount Assembly



Illus. No.	Part No.	Qty.	Description
1	101110	1	1" Bushing
2	101113	1	2A3.0 Pulley
3*	100135	1	AP-74 V-Belt
4	101107	1	1" SK Bushing
5*	100170	1	3V-710 V-Belt
6	101112	1	19" Idler Pulley
7	100715	1	1/4" x 1/4" x 4-5/8" Key
8	301852	1	1" Idler Shaft
9	880205	1	1" Pillow Block Bearing
10	153004	4	3/8" Flat Washer
11	150600	4	3/8-16 x 1-1/2" Hex Head Machine Bolt
12	150512	6	1/4-20 x 1/2" Hex Head Machine Bolt
13	150509	2	5/16-18 x 3" Hex Head Machine Bolt
14	153001	4	5/16" Flat Washer
15	152004	6	5/16" Hex Nut
16	153002	8	5/16" Lock Washer
17	801001	1	Idler Bearing Mount Assembly Complete (includes illus. nos. 8 through 11 and 17 through 24)
	311401	1	Idler Bearing Mount ONLY
18	880205	1	1" Pillow Block Bearing
19	153004	4	3/8" Flat Washer
20	153005	4	3/8" Lock Washer
21	152005	4	3/8-16 Hex Nut
22	103005	1	Idler Adjustment Hinge
23	153007	6	1/4" Lock Washer
24	152002	6	1/4-20 Hex Nut

\* Replace in matched sets (both belts).

# Tumbler Drive Motor Mount Assembly



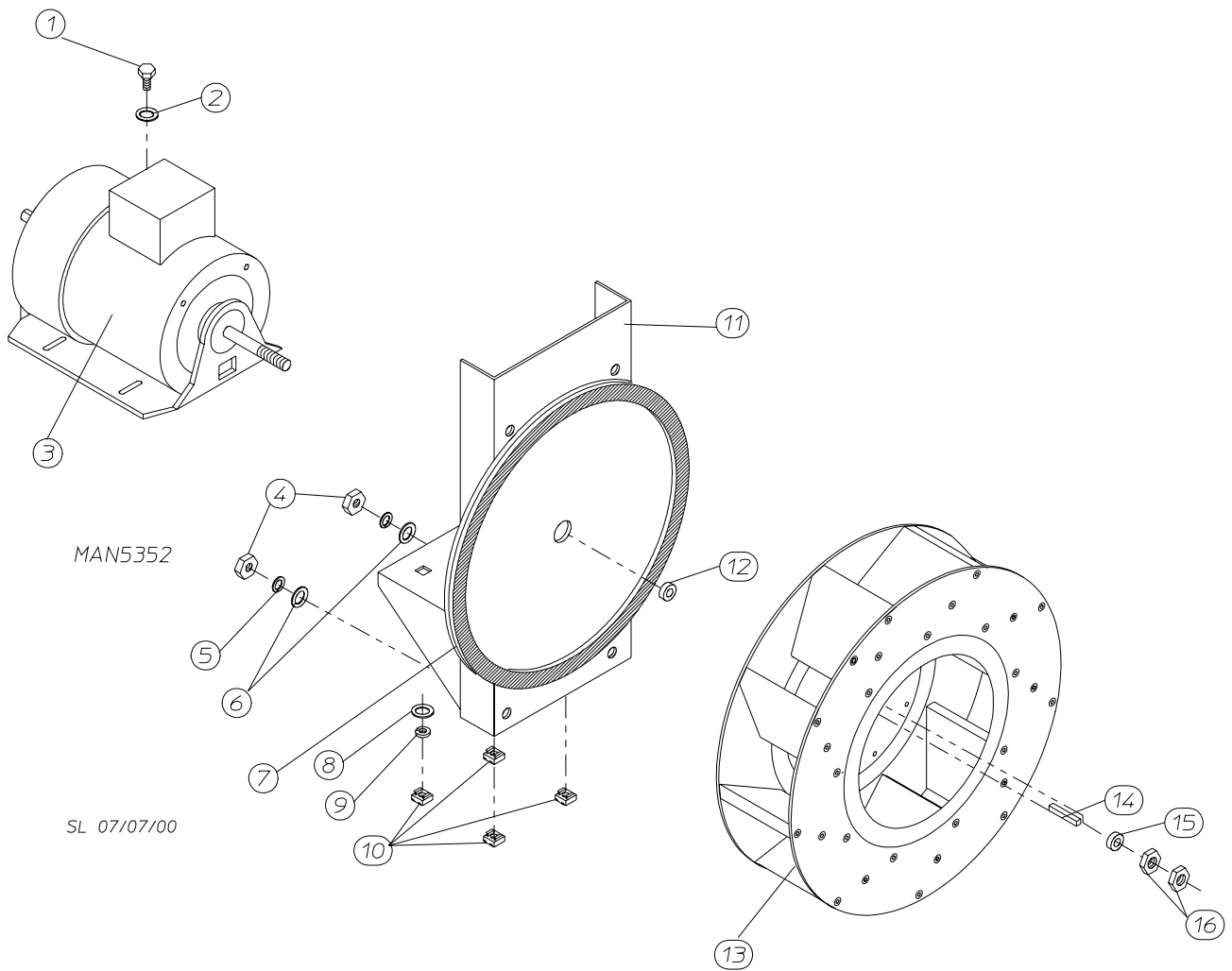
MAN0329

Illus. No.	Part No.	Qty.	Description
1	101121	1	5/8" SK Bushing
2	101114	1	2.65" Pulley (for 60 Hz models)
	101120	1	3.15" Pulley (for 50 Hz models)
3*	100170	1	3V-710 V-Belt
4	120200	1	3/8" x 90° Connector
5	150501	4	5/16-18 x 3/4" Hex Head Machine Bolt
6	153001	4	5/16" Flat Washer
7	100029	1	3/4 hp 208 / 230 / 460v 3ø 50/60 Hz and 380v 3ø 50 Hz Totally Enclosed, Fan-Cooled Motor (56Z frame)
8	800952	1	Tumbler Motor Mount ONLY (56Z frame)
	800953**	1	3/4 hp 208 / 230 / 380 / 460v 3ø 60 Hz Motor Mount Assembly Complete (includes illus. nos. 1, 2, 4 through 11, 15, and 16)
	800955**	1	3/4 hp 208 / 230 / 380 / 460v 3ø 50 Hz Motor Mount Assembly Complete (includes illus. nos. 1, 2, 4 through 11, 15, and 16)
9	152004	4	5/16-18 Hex Nut
10	153002	4	5/16" Lock Washer
11	153001	4	5/16" Flat Washer
12	152004	4	5/16-18 Hex Nut
13	153002	4	5/16" Lock Washer
14	153001	4	5/16" Flat Washer
15	150619	1	3/8-16 x 3" Hex Head Machine Bolt
16	152005	2	3/8-16 Hex Nut

\* Replace in matched sets (both belts).

\*\* Specify voltage when ordering.

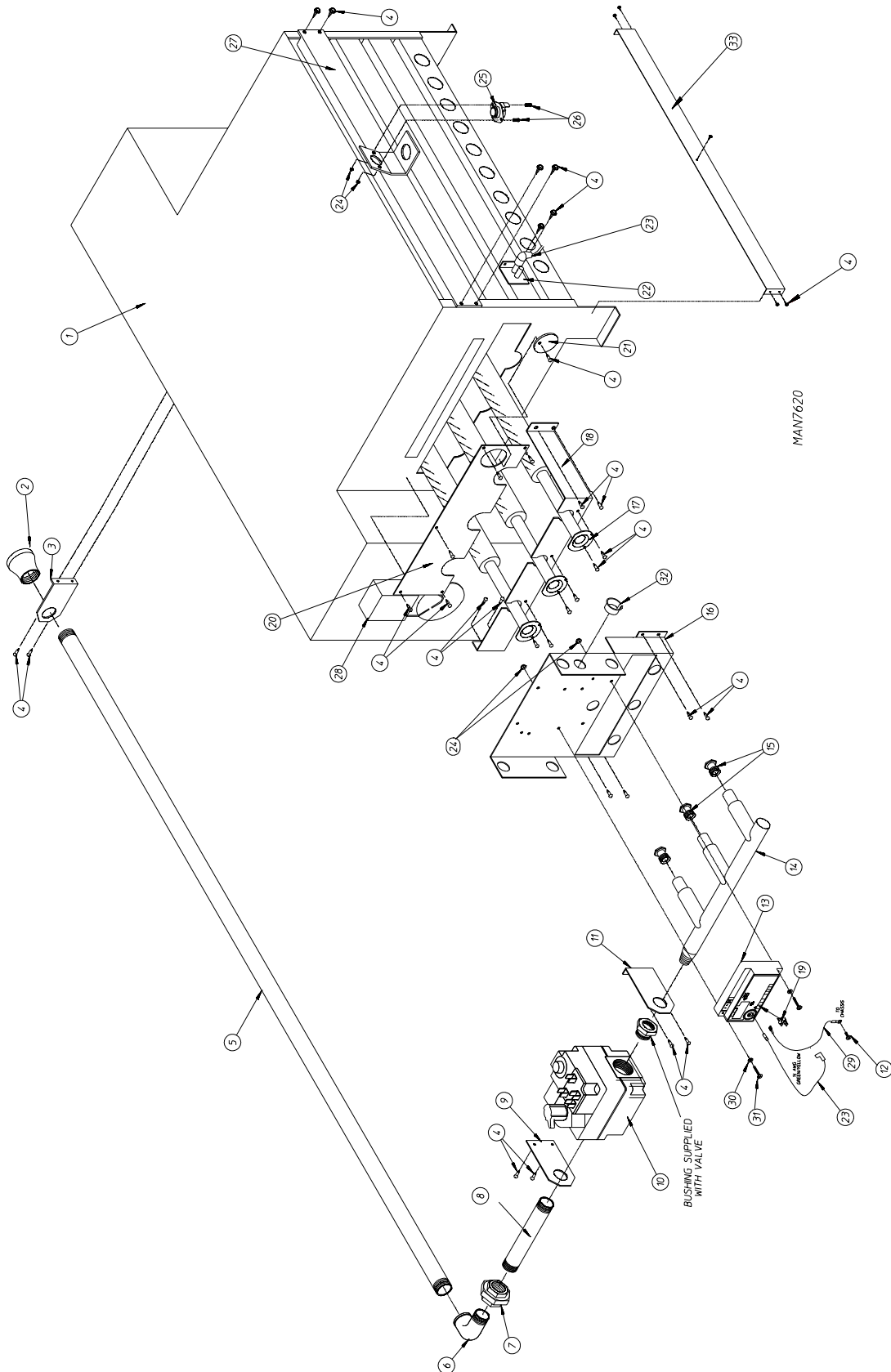
**IMPORTANT:** For voltages higher than 460 VAC, contact the ADC factory for correct part number of motor mount assembly.



Illus. No.	Part No.	Qty.	Description
1	150501	4	5/16-18 x 1" Hex Head Bolt
2	153001	4	5/16" Flat Washer
3	181043	1	3 hp Motor 208-460v 50/60 Hz
	100088	1	3 hp Motor 575v 3ø 60 Hz
4	152004	4	5/16-18 Hex Nut
5	153002	4	5/16" Lock Washer
6	153001	4	5/16" Flat Washer
7	117604	4'	Noise Suppressor Tape (sold by the foot)
8	153001	4	5/16" Flat Washer
9	153002	4	5/16" Lock Washer
10	152004	4	5/16-18 Hex Nut
11	803561	1	Blower Motor Mount
12	153054	1	5/8" Motor Washer
13	802027	1	16" Riveted High Flow Impellor 7/8" Bore (60 Hz dryers)
	802024	1	16" Riveted Impellor 7/8" Bore (50 Hz dryers)
14	100705	1	3/16" x 3/16" x 1-3/8" Key
15	153054	1	5/8" Motor Washer
16	152006	2	1/2-20 Left Hand Jam Nut

# Direct Spark Ignition Burner Assembly

For Gas Models ONLY

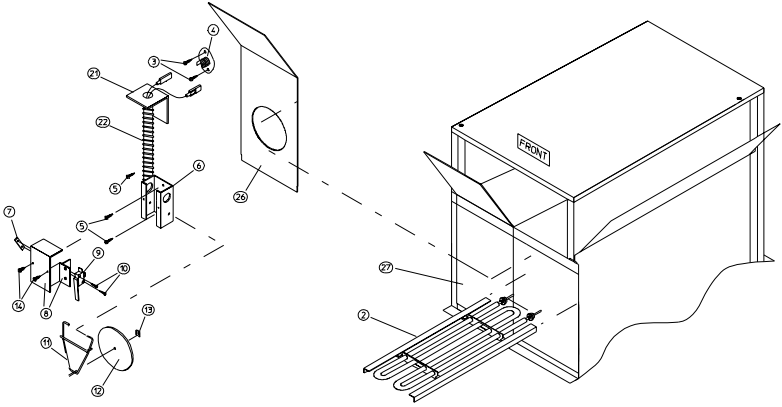




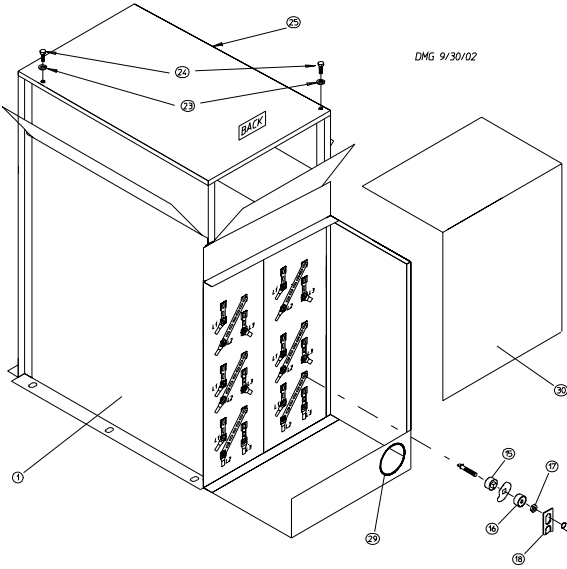
# Direct Spark Ignition Burner Assembly

For Gas Models ONLY

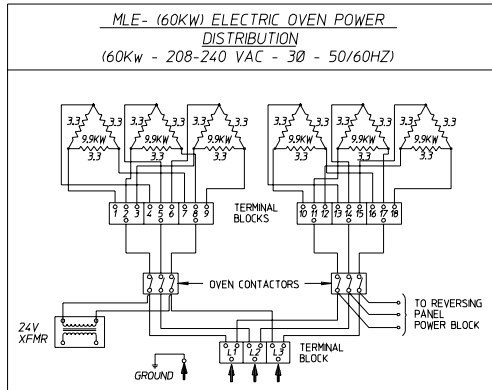
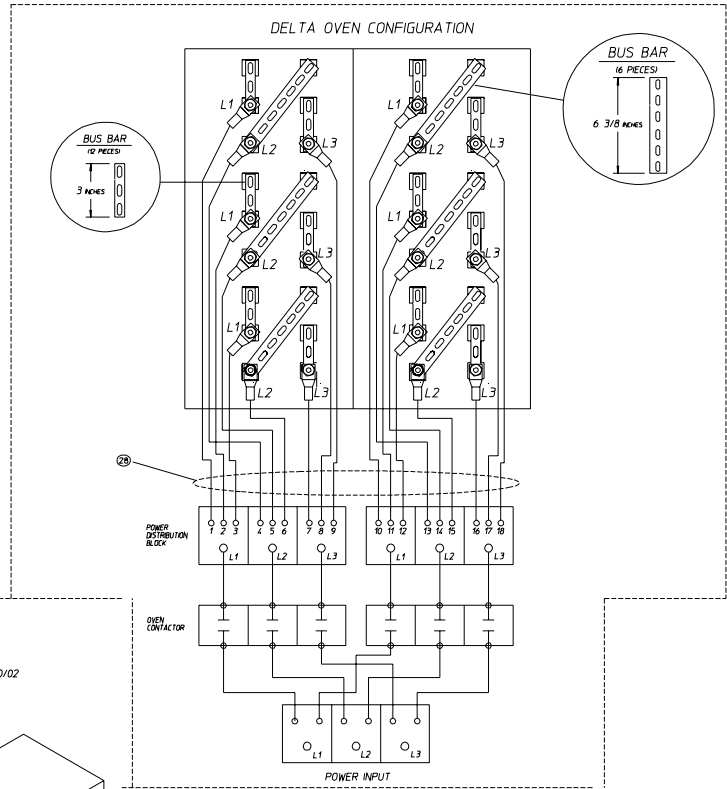
<u>Illus. No.</u>	<u>Part No.</u>	<u>Qty.</u>	<u>Description</u>
1	820201	1	Burner Box
2	142924	1	1" to 3/4" Reducing Coupling
3	331291	1	Pipe Bracket
4	150309	34	#10-16 x 1/2" Hex Head TEK Crimptite Screw
5	142807	1	3/4" x 40" Nipple
6	142854	1	3/4" Street Elbow
7	142601	1	3/4" Union
8	142710	1	3/4" x 4" Nipple
9	390125	1	Flat Gas Pipe Bracket
10	887159	1	Gas Valve
11	331088	1	Extended Pipe Bracket (bent)
12	120910	2	#10-32 Type F Green Ground Screw
13	883849	1	Direct Spark Ignition Module with High Voltage Wire
14	141219	1	3-Port Manifold
15	140832	3	ML-130 #4 Burner Orifice (natural gas)
	140819	3	ML-130 #30 Burner Orifice (liquid propane gas)
	887233	1	ML-130 Liquid Propane Conversion Kit (for models mfd. as of June 19, 2007)
	881868	1	ML-130 Liquid Propane Conversion Kit (for models mfd. prior to June 19, 2007)
	140863	3	ML-130DR #12 Burner Orifice (natural gas)
	140855	3	ML-130DR #33 Burner Orifice (liquid propane gas)
	887246	1	ML-130DR Liquid Propane Conversion Kit
16	335031	1	Direct Spark Ignition / Hot Surface Ignition Mount Manifold Rest
17	141136	3	Burner Tube
18	331287	1	Burner Tube Support
19	121007	1	1 Female / 3 Male 1/4" Adaptor
20	331289	1	Burner Box Cover Plate
21	331290	1	Ignitor / Flame-Probe Sight Hole Disc
22	128915	1	Ignitor / Flame-Probe Assembly
23	884278	1	High Voltage Wire (for models with 1/4" spade connection at module)
	880330	1	High Voltage Wire (for models with spike style connection at module)
24	151000	4	#6-32 Pal Nut
25	130201	1	330° Manual / Reset Hi-Limit
26	150001	2	#6-32 x 1/2" Machine Screw
27	821457	1	Hi-Limit Bracket
28	————	1	Sail Switch Assembly <b>(refer to Sail Switch Assembly on page 36)</b>
29	822513	1	Fenwal Ground Wire
30	153017	2	#6 Flat Washer
31	150002	2	#6-32 x 1" Phillips Round Head Machine Screw
32	121300	1	Open / Closed Bushing
33	332256	1	Liquid Propane Burner Baffle



MAN6289



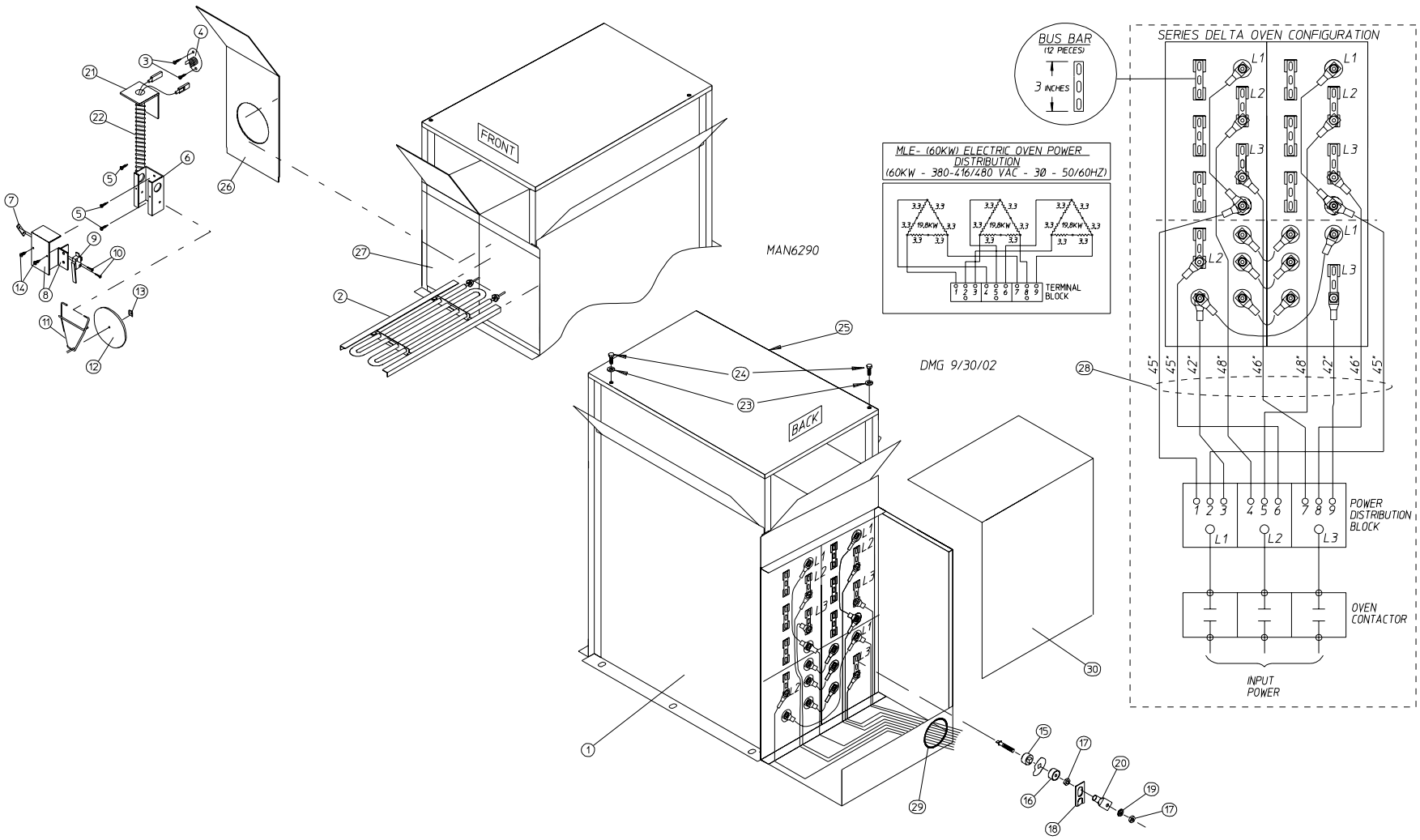
DMG 9/30/02



## 60 kW 208-240 Volt Electric Oven Assembly

---

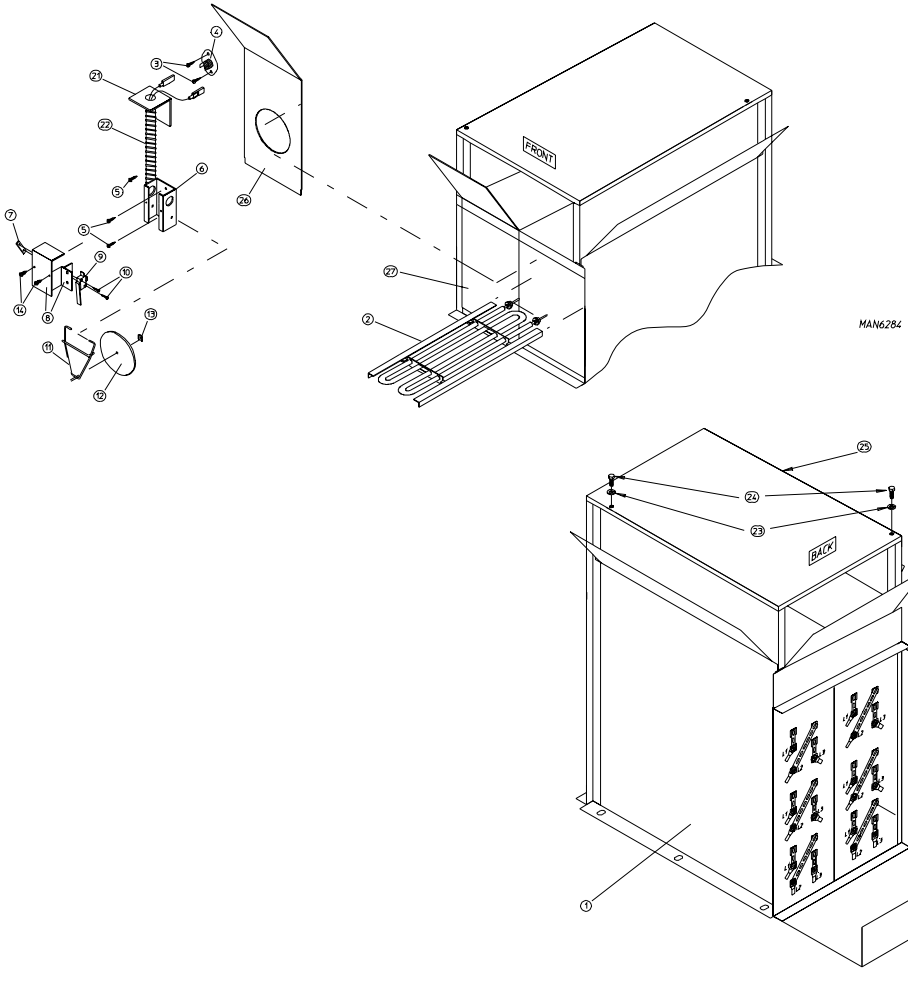
<u>Illus. No.</u>	<u>Part No.</u>	<u>Qty.</u>	<u>Description</u>
1	815998	1	Electric Oven Box ONLY
2	120075	18	208v 3.3 kW Open Coil Element
	120076	18	240v 3.3 kW Open Coil Element
3	150301	2	#8-18 x 7/16" Phillips Pan Head TEK Screw
4	130400	1	290° Hi-Limit Thermostat
5	150309	4	#10-16 x 1/2" Hex Head TEK Crimptite Screw
6	319200	1	Sail Switch Box
7	154004	1	Twin Speed Nut
8	802799	1	Sail Switch Box Cover
9	122200	1	Sail Switch ONLY
10	150303	2	#4 x 3/4" Pan Head "A" Machine Screw
11	105500	1	Sail Switch Actuator Rod
12	319202	1	Sail Switch Damper (flat)
13	154002	1	1/8" Push-On Fastener
14	150309	28	#10-16 x 1/2" Hex Head TEK Crimptite Screw
15	120081	36	Internal Ceramic Insulator
16	120080	36	External Ceramic Insulator
17	152008	72	#10-32 Hex Nut
18	121011	6'	Bus Bar (sold by the foot)
19	153009	36	#10 Star Washer
20	121032	18	#8 Connector
21	353222	1	Pipe Bracket
22	802760	1	Hi-Limit and Sail Switch Harness
23	153007	2	1/4" Lock Washer
24	150512	2	1/4-20 x 1/2" Long Bolt
25	819961	1	Burner Cover Assembly
26	331278	1	Right Front Oven Panel
27	331276	1	Left Front Oven Panel
28	815709	1	#8 Oven Assembly Wiring
29	156001	1	Caterpillar Grommet
30	331279	1	Oven Electrical Cover



## 60 kW 380-416 / 480 Volt Electric Oven Assembly

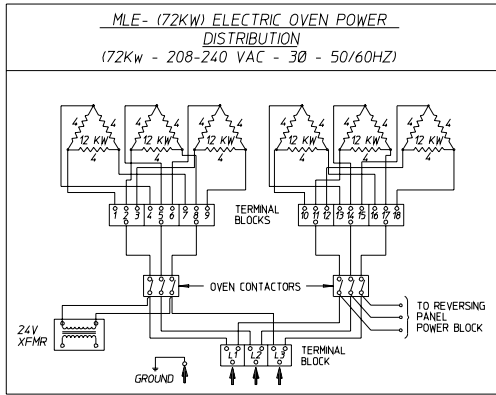
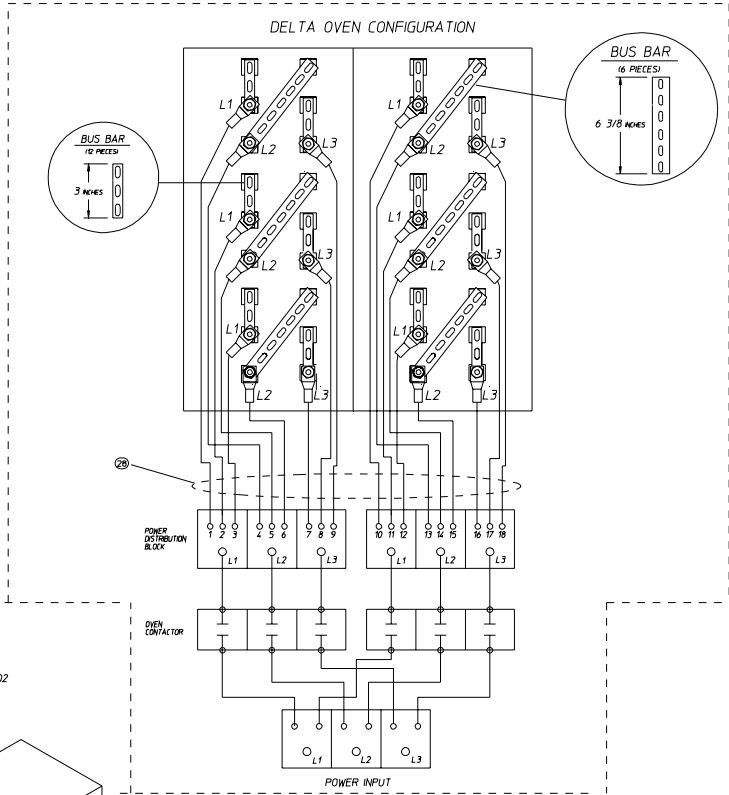
---

<u>Illus. No.</u>	<u>Part No.</u>	<u>Qty.</u>	<u>Description</u>
1	815998	1	Electric Oven Box ONLY
2	120074	18	3.3 kW Open Coil Element (for 380v models)
	120075	18	3.3 kW Open Coil Element (for 400-416v models)
	120076	18	3.3 kW Open Coil Element (for 480v models)
3	150301	2	#8-18 x 7/16" Phillips Pan Head TEK Screw
4	130400	1	290° Hi-Limit Thermostat
5	150309	4	#10-16 x 1/2" Hex Head TEK Crimptite Screw
6	319200	1	Sail Switch Box
7	154004	1	Twin Speed Nut
8	802799	1	Sail Switch Box Cover
9	122200	1	Sail Switch
10	150303	2	#4 x 3/4" Pan Head "A" Machine Screw
11	105500	1	Sail Switch Actuator Rod
12	319202	1	Sail Switch Damper (flat)
13	154002	1	1/8" Push-On Fastener
14	150309	28	#10-16 x 1/2" Hex Head TEK Crimptite Screw
15	120081	36	Internal Ceramic Insulator
16	120080	36	External Ceramic Insulator
17	152008	72	#10-32 Hex Nut
18	121011	3'	Bus Bar (sold by the foot)
19	153009	36	#10 Star Washer
20	121032	21	#8 Connector
21	353222	1	Pipe Bracket
22	802760	1	Hi-Limit and Sail Switch Harness
23	153007	2	1/4" Lock Washer
24	150512	2	1/4-20 x 1/2" Long Bolt
25	819961	1	Burner Cover Assembly
26	331278	1	Right Front Oven Panel
27	331276	1	Left Front Oven Panel
28	815710	1	#8 Oven Assembly Wiring
29	156001	1	Caterpillar Grommet
30	331279	1	Oven Electrical Cover



MAN6284

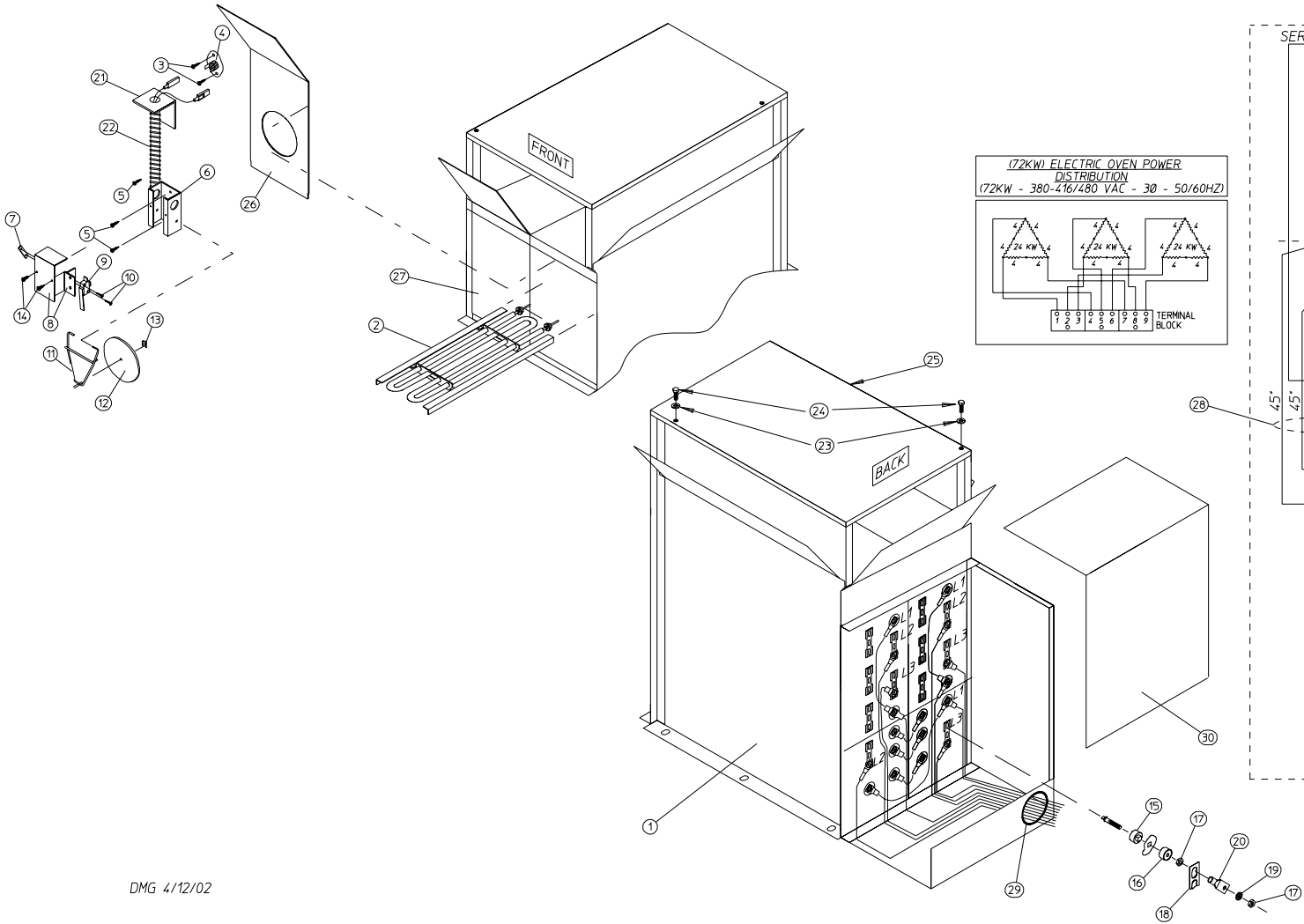
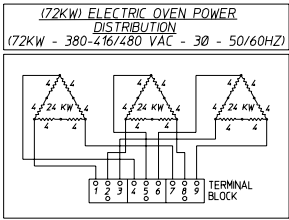
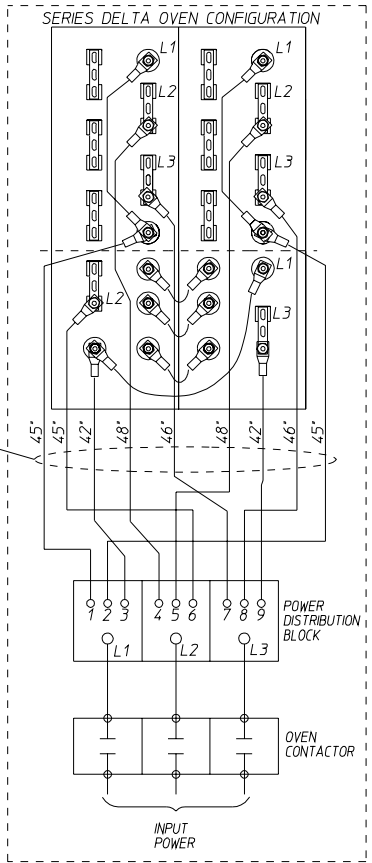
DMG 9/30/02



## 72 kW 208-240 Volt Electric Oven Assembly

---

<u>Illus. No.</u>	<u>Part No.</u>	<u>Qty.</u>	<u>Description</u>
1	815998	1	Electric Oven Box ONLY
2	120098	18	208 Volt 4 kW Open Coil Element
	120099	18	240 Volt 4 kW Open Coil Element
3	150301	2	#8-18 x 7/16" Phillips Pan Head TEK Screw
4	130400	1	290° Hi-Limit
5	150309	4	#10-16 x 1/2" Hex Head TEK Crimptite Screw
6	319200	1	Sail Switch Box
7	154004	1	Twin Speed Nut
8	802799	1	Sail Switch Box Cover
9	122200	1	Sail Switch
10	150303	2	#4 x 3/4" Pan Head "A" Machine Screw
11	105500	1	Sail Switch Actuator Rod
12	319202	1	Sail Switch Damper (flat)
13	154002	1	1/8" Push-On Fastener
14	150309	28	#10-16 x 1/2" Hex Head TEK Crimptite Screw
15	120081	36	Internal Ceramic Insulator
16	120080	36	External Ceramic Insulator
17	152008	72	#10-32 Hex Nut
18	121011	6'	Bus Bar (sold by the foot)
19	153009	36	#10 Star Washer
20	121032	36	#8 Connector
21	353222	1	Pipe Bracket
22	802760	1	Hi-Limit and Sail Switch Harness
23	153007	2	1/4" Lock Washer
24	150512	2	1/4-20 x 1/2" Long Bolt
25	819961	1	Burner Cover Assembly
26	331278	1	Right Front Oven Panel
27	331276	1	Left Front Oven Panel
28	815709	1	#8 Oven Assembly Wiring
29	156001	1	Caterpillar Grommet
30	331279	1	Oven Electrical Cover



DMG 4/12/02

MAN6134

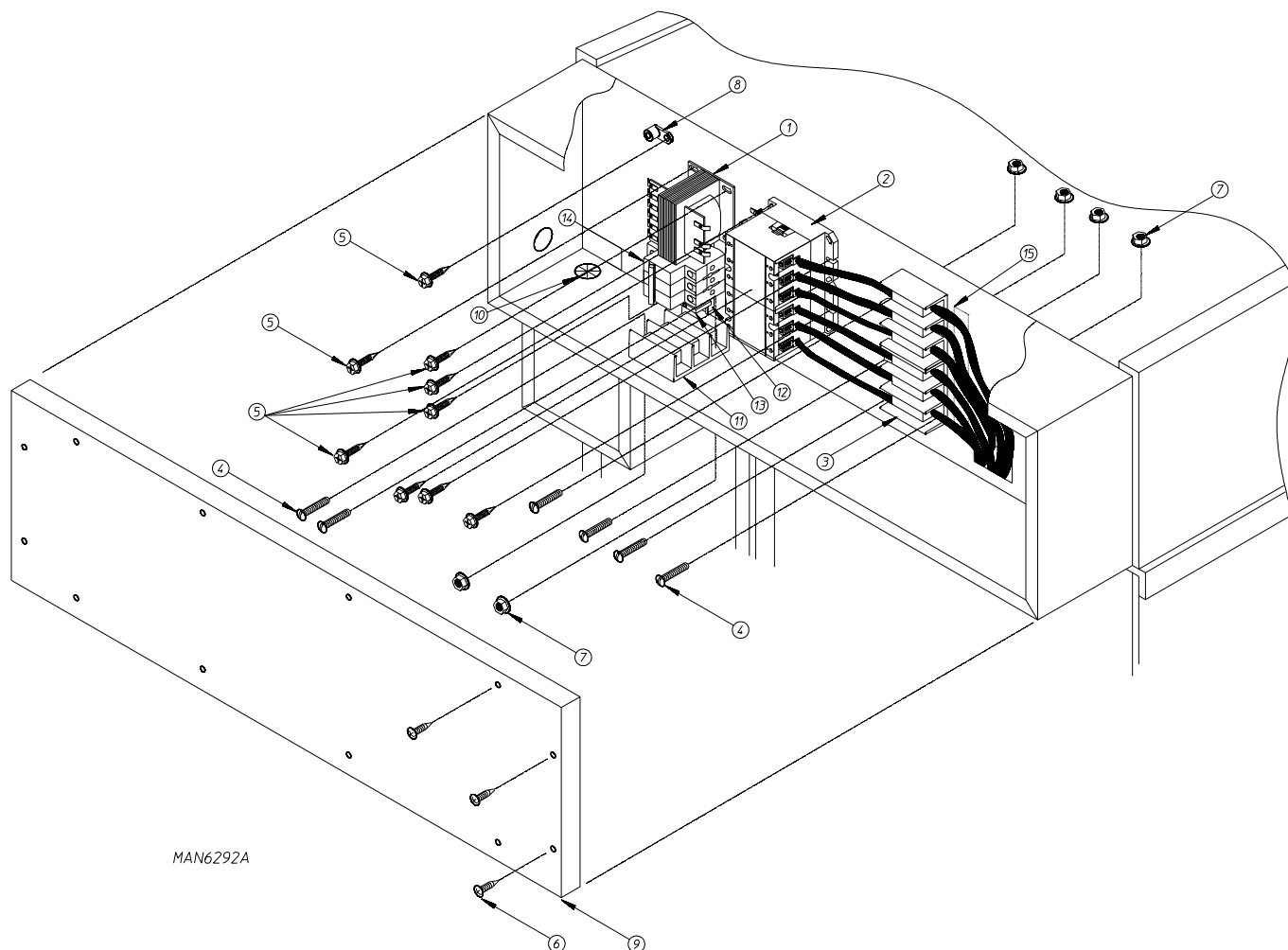


## 72 kW 380-416 / 480 Volt Electric Oven Assembly

---

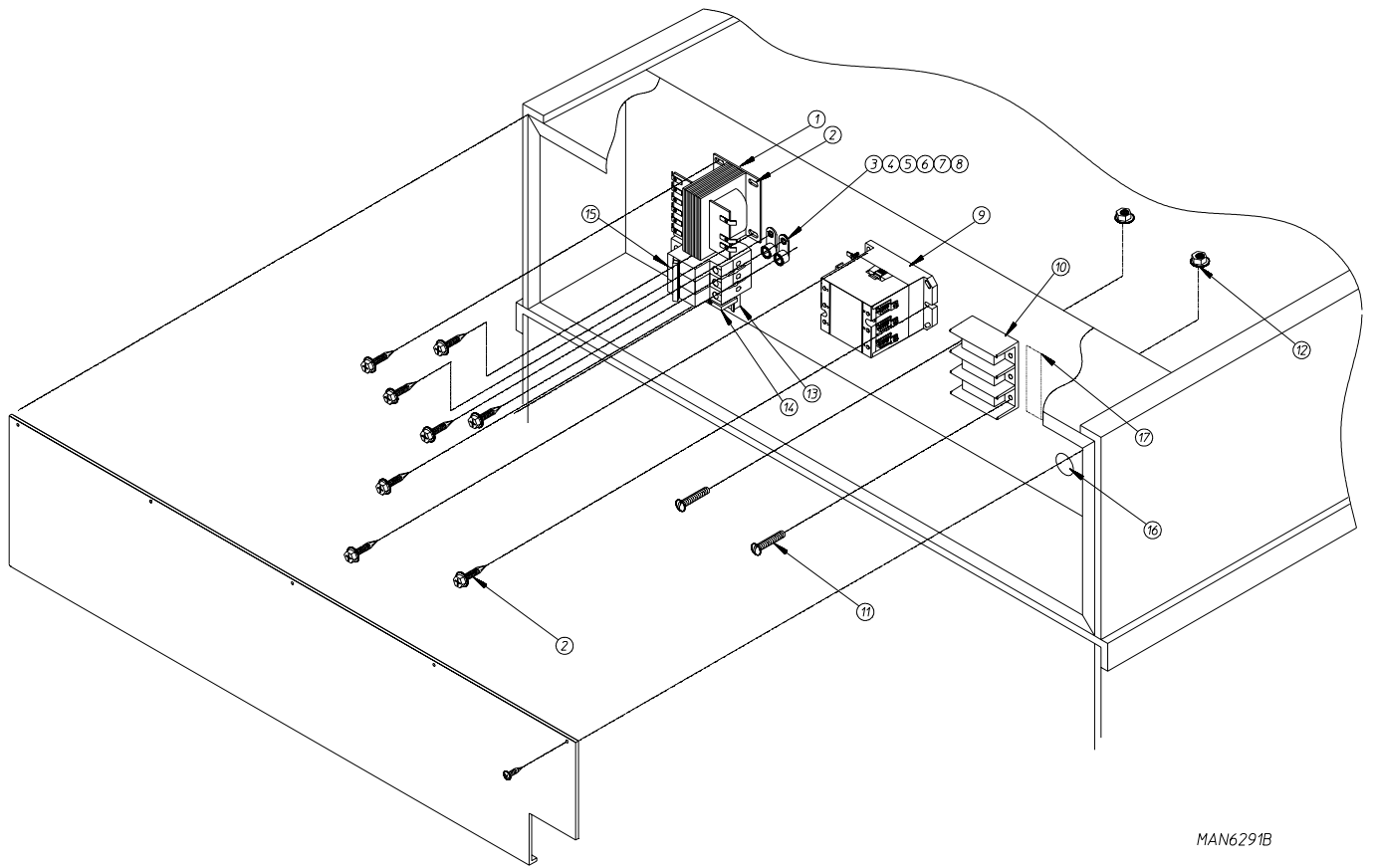
<u>Illus. No.</u>	<u>Part No.</u>	<u>Qty.</u>	<u>Description</u>
1	815998	1	Electric Oven Box ONLY
2	120073	18	4 kW Open Coil Element (for 380 volt models)
	120098	18	4 kW Open Coil Element (for 400-416 volt models)
	120099	18	4 kW Open Coil Element (for 480 volt models)
3	150301	2	#8-18 x 7/16" Phillips Pan Head TEK Screw
4	130400	1	290° Hi-Limit
5	150309	4	#10-16 x 1/2" Hex Head TEK Crimptite Screw
6	319200	1	Sail Switch Box
7	154004	1	Twin Speed Nut
8	802799	1	Sail Switch Box Cover
9	122200	1	Sail Switch
10	150303	2	#4 x 3/4" Pan Head "A" Machine Screw
11	105500	1	Sail Switch Actuator Rod
12	319202	1	Sail Switch Damper (flat)
13	154002	1	1/8" Push-On Fastener
14	150309	28	#10-16 x 1/2" Hex Head TEK Crimptite Screw
15	120081	36	Internal Ceramic Insulator
16	120080	36	External Ceramic Insulator
17	152008	72	#10-32 Hex Nut
18	121011	3'	Bus Bar (sold by the foot)
19	153009	36	#10 Star Washer
20	121032	21	#8 Connector
21	353222	1	Pipe Bracket
22	802760	1	Hi-Limit and Sail Switch Harness
23	153007	2	1/4" Lock Washer
24	150512	2	1/4-20 x 1/2" Long Bolt
25	819961	1	Burner Cover Assembly
26	331278	1	Right Front Oven Panel
27	331276	1	Left Front Oven Panel
28	815709	1	#8 Oven Assembly Wiring (for 380-416 volt models)
	815710	1	#8 Oven Assembly Wiring (for 480 volt models)
29	156001	1	Caterpillar Grommet
30	331279	1	Oven Electrical Cover

# 208-240 Volt Oven Relay Box Assembly



<u>Illus. No.</u>	<u>Part No.</u>	<u>Qty.</u>	<u>Description</u>
1	132087	1	Transformer
2	884133	2	120-amp – 24 VAC Relay
3	120706	2	Power Distributions Block
4	150521	6	1/4-20 x 2" Carriage Bolt
5	150309	9	#10-16 x 1/2" Hex Head TEK Crimptite Screw
6	150301	12	#8-18 x 7/16" Phillips Pan Head TEK Screw
7	152014	6	1/4-20 Free Spin Wash Nut
8	121010	1	L-70 Terminal Lug
9	331293	1	Box Cover
10	121400	1	Universal Bushing
11	120710	1	Power Distribution Block
12	120768	3"	35 x 15mm Din Rail (sold by the inch)
13	120765	2	Din Rail End Stop
14	135499	1	25-amp / 3-Pole Circuit Breaker
15	114518	2	Power Block Label

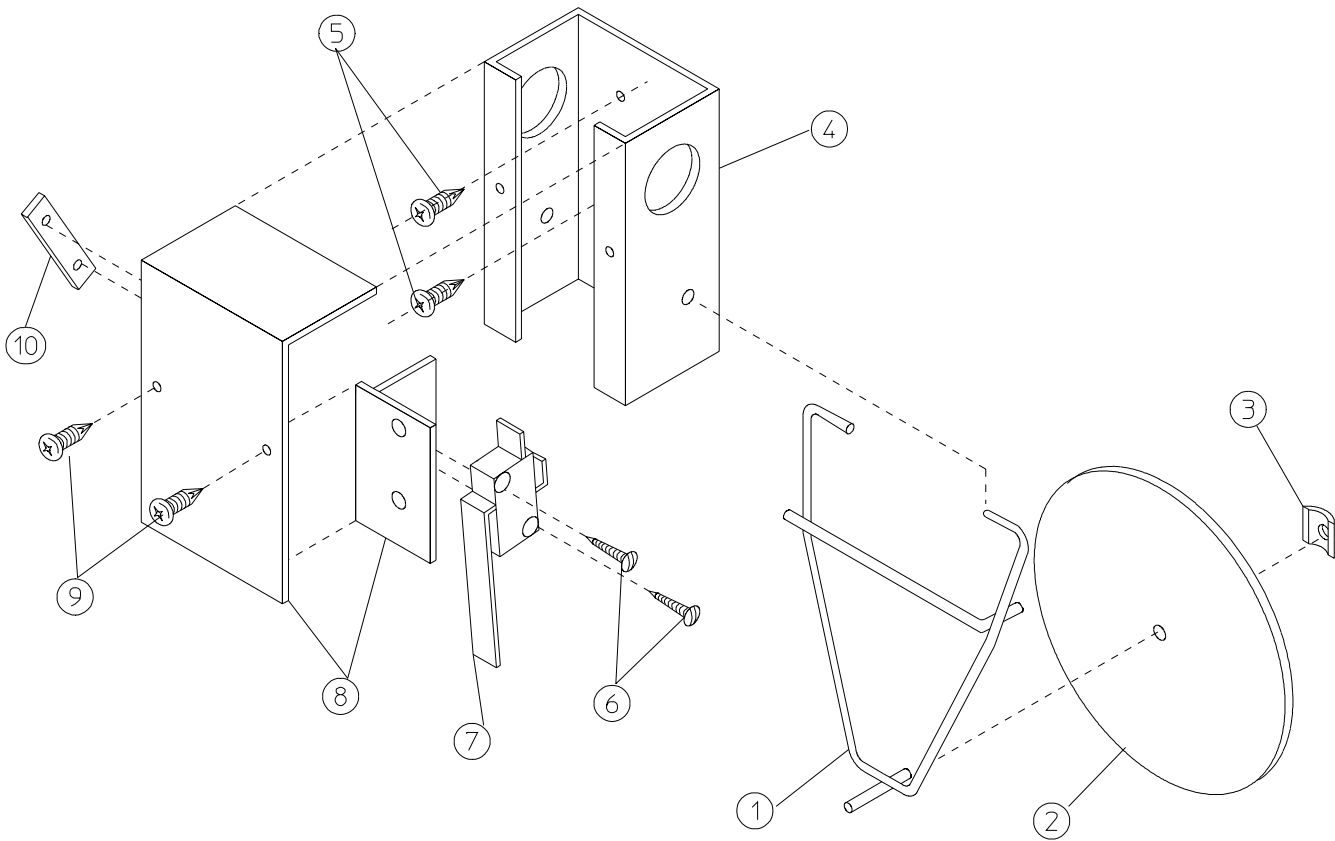
# 380-480 Volt Oven Relay Box Assembly



MAN6291B

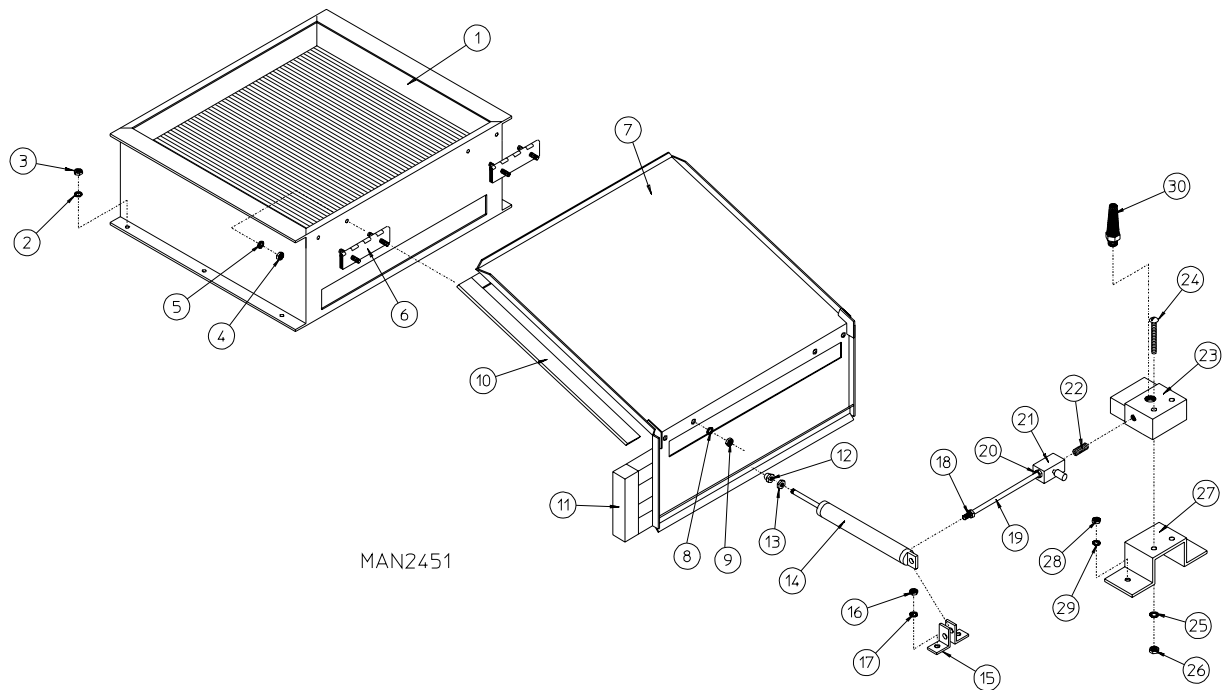
<u>Illus. No.</u>	<u>Part No.</u>	<u>Qty.</u>	<u>Description</u>
1	132004	1	Transformer
2	150309	10	#10-16 x 1/2" Hex Head TEK Crimptite Screw
3	121012	1	L-125 Ground Lug
4	121010	1	L-70 Ground Lug
5	150511	1	1/4-20 x 1" Tap Bolt
6	153018	1	1/4" Flat Washer
7	153007	1	1/4" Lock Washer
8	152002	1	1/4-20 Hex Nut
9	884129	1	120-amp 24 Volt Relay
10	120706	1	Power Distribution Block
11	150521	2	1/4-20 x 2" Carriage Bolt
12	152014	2	1/4-20 Free Spin Wash Nut
13	120768	3"	35 x 15mm Din Rail (sold by the inch)
14	120774	2	Din Rail End Stop
15	135499	1	25-amp / 3-Pole Circuit Breaker
16	121400	1	Universal Bushing
17	114518	1	Power Block Label

# Sail Switch Assembly



MAN0440

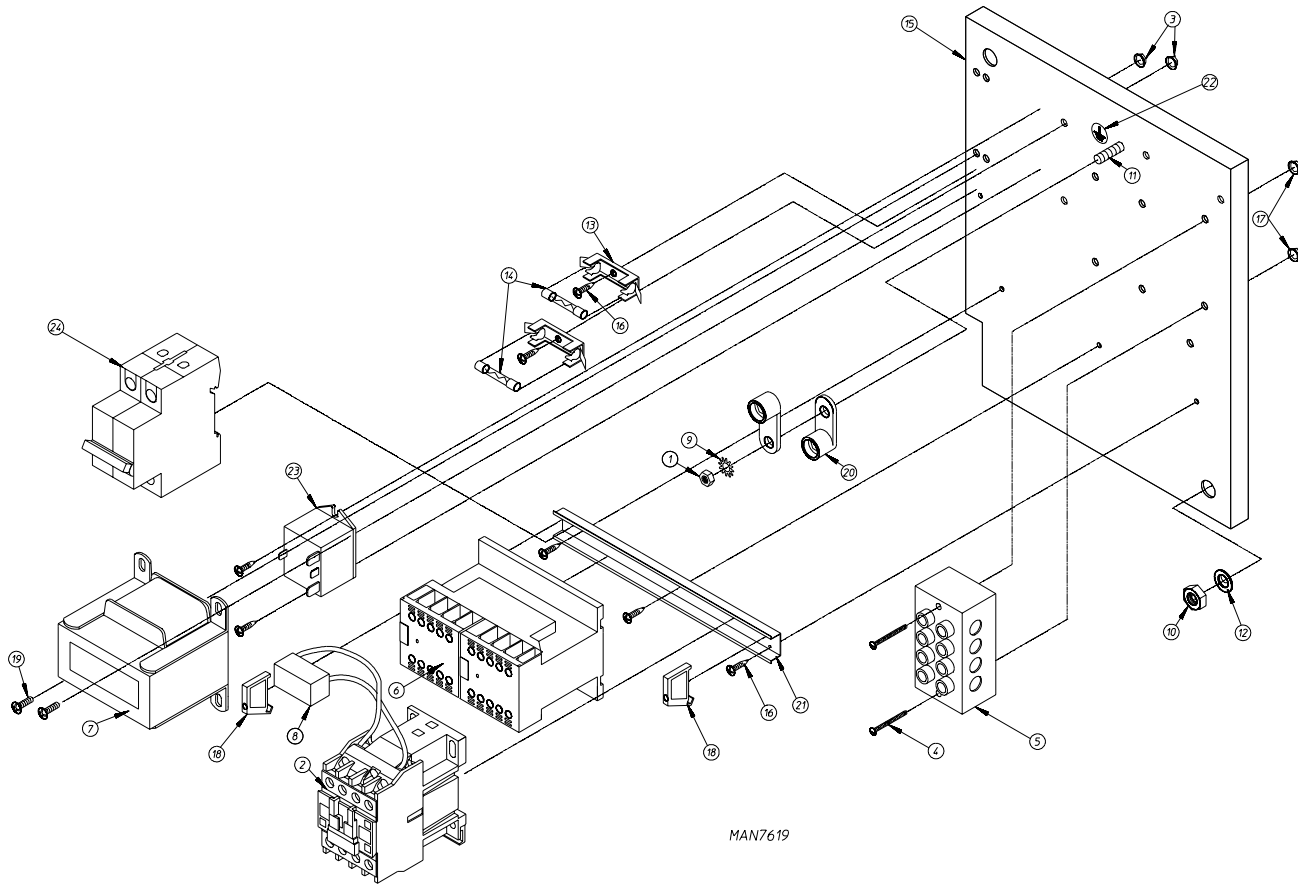
<u>Illus. No.</u>	<u>Part No.</u>	<u>Qty.</u>	<u>Description</u>
1	105500	1	Sail Switch Actuator Rod
2	319202	1	Sail Switch Damper (flat)
3	154002	1	1/8" Push-On Fastener
4	802800	1	Sail Switch Box and Cover
	802801	1	Sail Switch Box Assembly Complete (includes illus. nos. 1 through 4 and 6 through 10)
5	150309	2	#10-16 x 1/2" Hex Head TEK Crimptite Screw
6	150303	2	#4 x 3/4" Pan Head "A" Machine Screw
7	122200	1	Sail Switch
8	802799	1	Sail Switch Box Cover
9	150313	2	#10-16 x 1/2" TORX® Crimptite Screw
10	154004	1	Twin Speed Nut



MAN2451

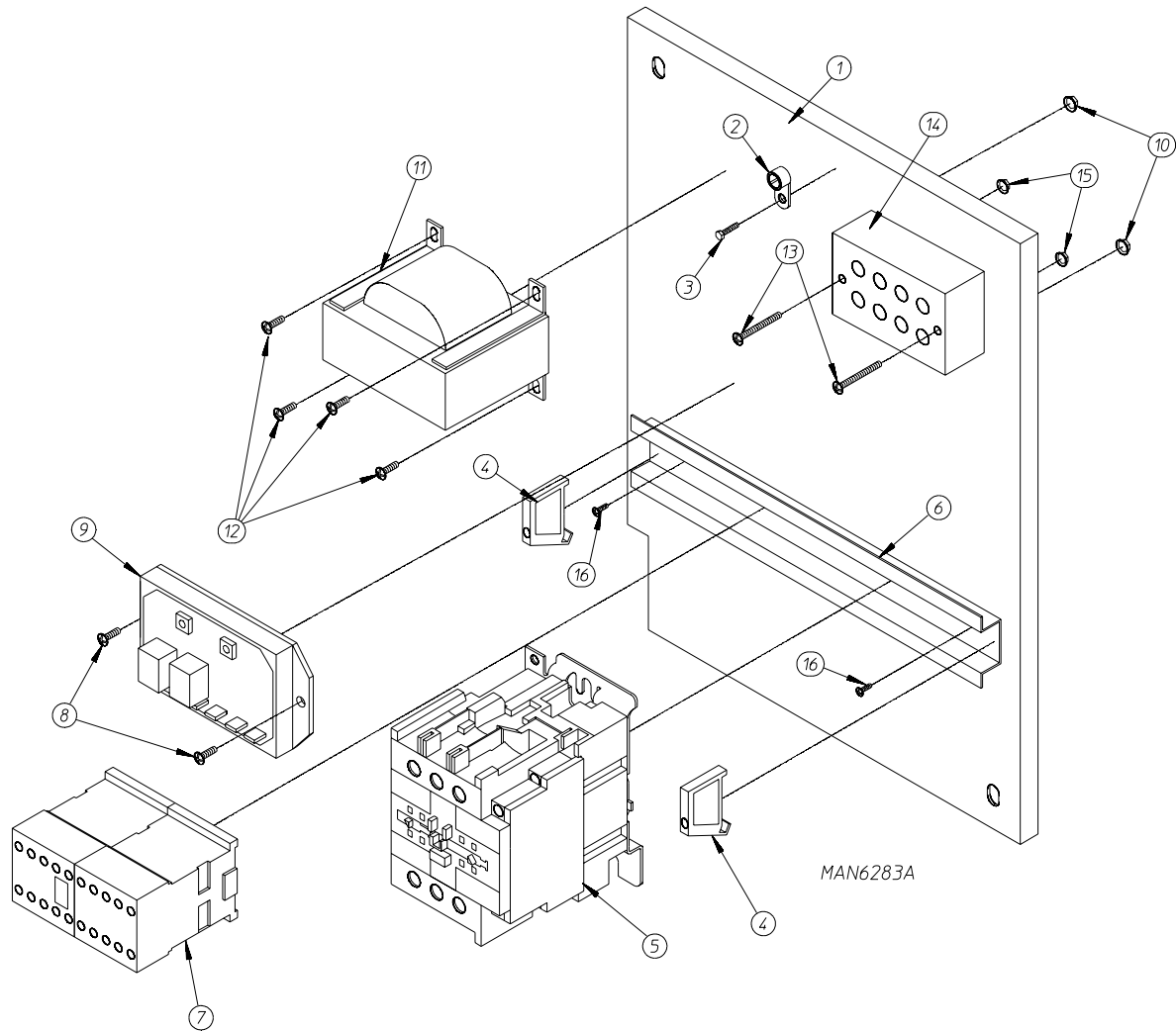
<u>Illus. No.</u>	<u>Part No.</u>	<u>Qty.</u>	<u>Description</u>
1	165012	1	Steam Coil Assembly
	165019	1	Steel Steam Coil Assembly (optional)
2	153002	6	5/16" Lock Washer
3	152004	6	5/16-18 Hex Nut
4	152002	4	1/4-20 Hex Nut
5	153007	4	1/4" Lock Washer
6	820321	2	Steam Damper Hinge Assembly
7	820320	1	Steam Damper Assembly (includes illus. nos. 7, 10, and 11)
8	153007	4	1/4" Lock Washer
9	152002	4	1/4-20 Hex Nut
10	115995	84	Steam Damper Gasket (sold by the inch)
11	102350	1	Gasket (68-12" length)
12	151007	1	7/16-20 Stainless Steel Acorn Nut
13	152007	1	7/16-20 Hex Nut
14	100499	1	1-1/2" Bore x 3" Stroke Piston
15	100500	1	Piston Support Bracket
16	152002	4	1/4-20 Hex Nut
17	153007	4	1/4" Lock Washer
18	100472	1	1/4" x 1/8" Connector
19	143110	2	1/4" Tubing (sold by the foot)
20	100472	1	1/4" x 1/8" Connector
21	100496	1	1/8" Needle Valve
22	143238	1	1/8" Close Nipple
23	100498	1	3-Way Micro Valve 24 VAC
24	150002	2	#6-32 x 1" Round Head Machine Screw
25	153010	2	#6 Star Washer
26	152000	2	#6-32 Hex Nut
27	330987	1	Micro Valve Support Bracket
28	152002	2	1/4-20 Hex Nut
29	153007	2	1/4" Lock Washer
30	100520	1	1/8" N.P.T. Silencer (muffler)

# Phase 7 Reversing Relay Panel Assembly



Illus. No.	Part No.	Qty.	Description
1	152002	1	1/4-20 Hex Nut
2	132445	1	3 hp Contactor
3	151001	2	#8-32 Pal Nut
4	150009	2	#6-32 x 1-1/2" Slotted Round Head Machine Screw
5	120701	1	4-Position Terminal Block
6	132497	1	Reversing Contactor
7	132109	1	208-240 Volt Transformer (for gas and steam models)
	132082	1	380-416 Volt Transformer (for gas and steam models)
	132067	1	460-480 Volt Transformer (for gas and steam models)
8	137015	1	Arc Suppressor Board
9	153021	1	1/4" Star Washer
10	152004	1	5/16-18 Hex Nut
11	153525	1	1/4-20 x 1" Self-Clinching Stud
12	153002	1	5/16" Lock Washer
13	136008	2	Fuse Holder
14	136048	2	3/4-amp (3AG) Slo-Blo Fuse (for 208-416 volt gas and steam models)
	136106	2	2-amp (3AG) Slo-Blo Fuse (for 208-240 volt electric models)
15	332346	1	Relay Panel
16	150301	3	#8-18 x 7/16" Phillips Head TEK Screw
17	151000	2	#6-32 Pal Nut
18	120765	2	End Stop
19	150108	2	#8-32 x 7/16" Phillips Pan Head Machine Screw
20	121010	2	L-70 Ground Lug
21	120768	8-1/4"	35 x 15mm Din Rail
22	112075	1	Ground Label
23	131932	1	24 VAC Relay (for electric models)
24	135501	1	2-Pole 1-amp Circuit Breaker (for 380-416 volt electric and all 480 volt models)

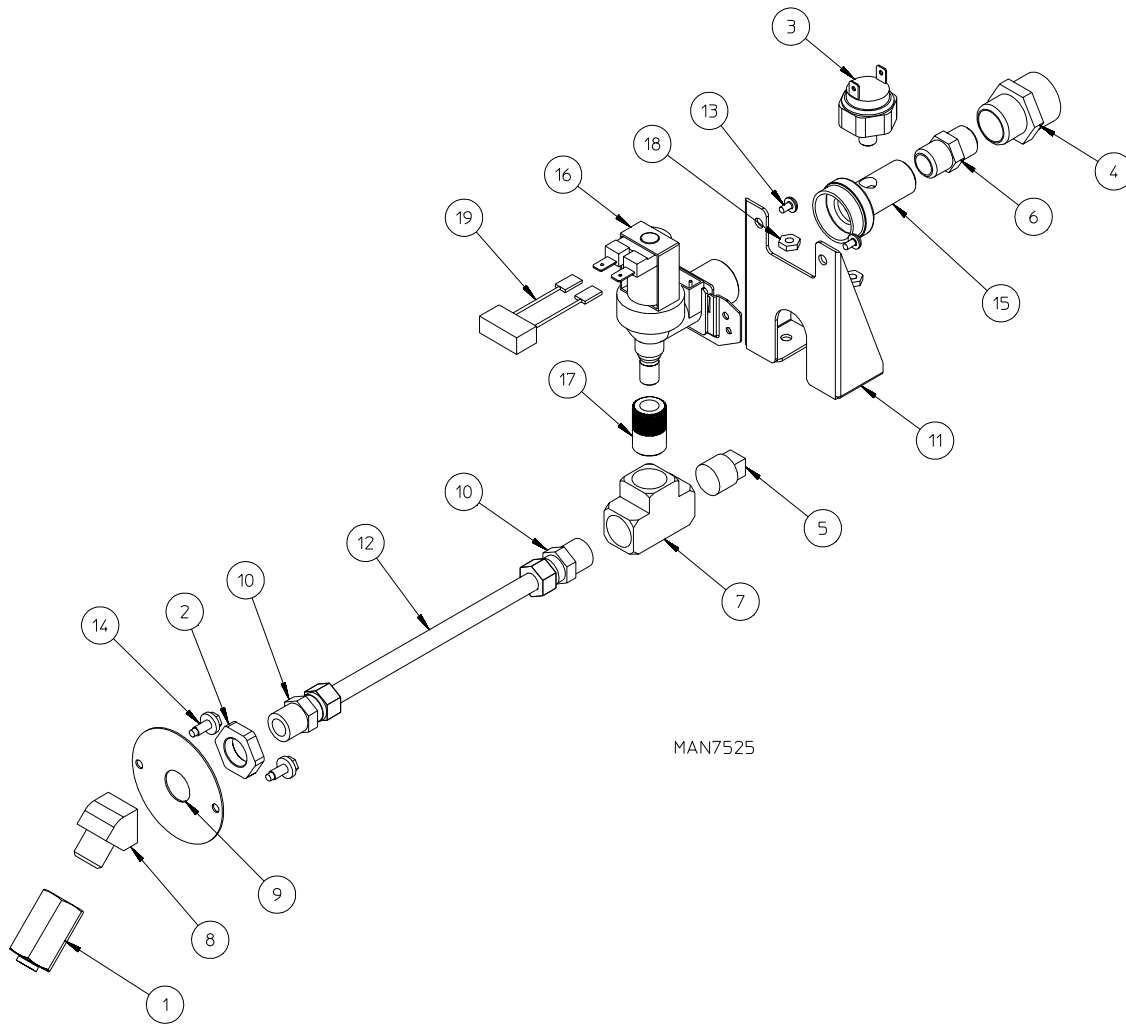
# Dual Timer Reversing Relay Mounting Panel Assembly



Illus. No.	Part No.	Qty.	Description
1	803632	1	Contactors / Relay Mounting Panel
2	121010	1	L-70 Ground Lug
3	150108	1	#8-32 x 1/2" Phillips Pan Head Machine Screw
4	120774	2	End Stop / Bracket
5	132445	1	3 hp Impellor (fan / blower) Contactor
6	120768	9"	Din Mounting Rail
7	882386	1	Reversing (impellor / blower / fan) Contactor – 24 VAC
8	150100	2	#8-32 x 1/2" Phillips Round Head Screw
9	884252	1	Reversing Timer (50/60 Hz) – 24 VAC
10	151001	2	#8-32 Pal Nut
11	132059	1	380 Volt Step Down Transformer (for gas and steam models)
	132062	1	416 Volt Step Down Transformer (for gas and steam models)
	132053	1	460 Volt Step Down Transformer (for gas and steam models)
12	150300	4	#10-16 x 1/2" Hex Washer TEK Screw
13	150009	2	#6-32 x 1-1/2" Phillips Round Head Machine Screw
14	120701	1	4-Position Power Distribution Block
15	151000	2	#6-32 Pal Nut
16	150309	2	#10-16 x 1/2" Hex Head TEK Crimpite Screw

# Fire Suppression System Solenoid Assembly

For Models Mfd. as of September 23, 2004



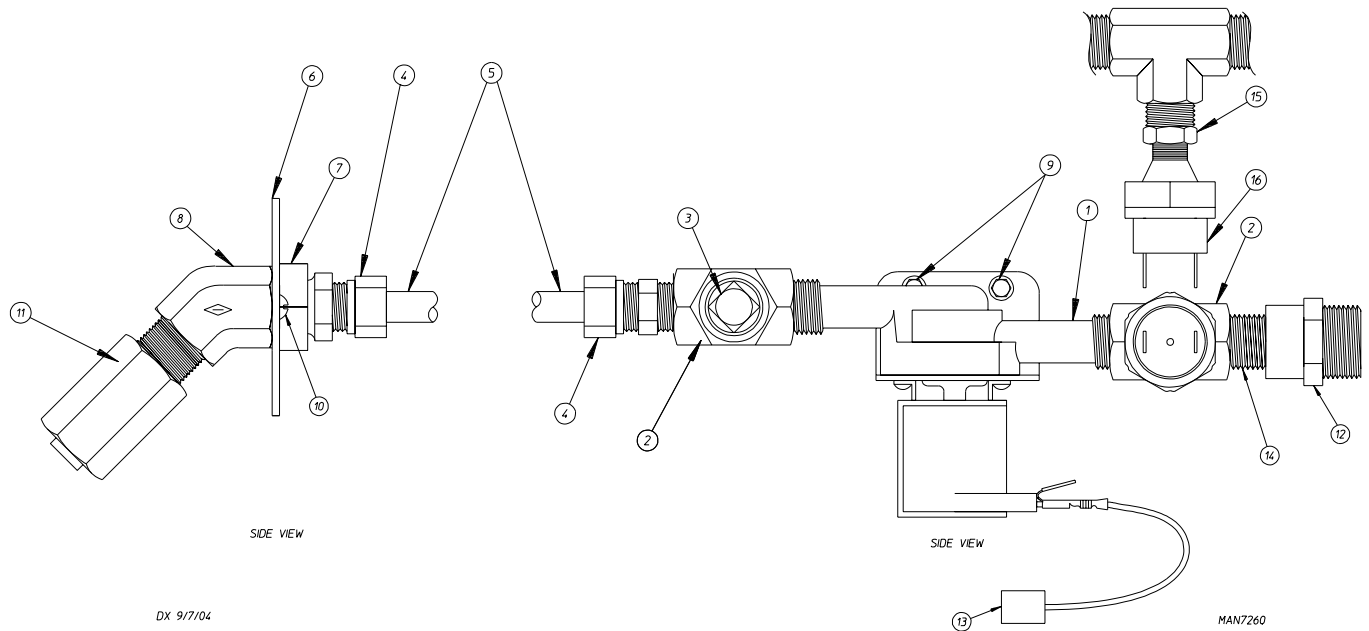
MAN7525

Illus. No.	Part No.	Qty.	Description
1	143581	1	Fire Suppression System 3 GPM 3/8" N.P.T. Spray Nozzle
2	143303	1	3/8" N.P.T. Brass Lock Nut
3	136987	1	Water Jet Pressure Switch
4	143025	1	3/4"-11.5 NH x 3/8" N.P.T. Nylon Hose Adapter
5	143251	1	3/8" M.P.T. Brass Plug
6	182579	1	3/8" M.P.T. x 3/8" M.P.T. Brass Hex Nipple
7	143220	1	3/8" F.P.T. Brass Tee
8	143301	1	3/8" Brass 45° Street Elbow
9	311588	1	Fire Suppression System Sprinkler Head Mounting Plate
10	143208	2	3/8" Comp x 3/8" M.P.T. Brass Connector
11	311587	1	Medium Dryer Fire Suppression System Valve Bracket
12	143108	1	20" Stainless Steel Flex Hose with 3/8" Compression
13	154338	2	M4 x 6mm Phillips Head Slotted Machine Screw
14	150309	2	#10-16 x 1/2" Hex Head TEK Crimp Tite
15	143182	1	3/4" GHT x 1/8" x 3/8" N.P.T. Brass Tee
16	165119	1	Fire Suppression System Water Inlet Valve
17	143183	1	7/16-20 x 3/8" N.P.T. Brass Adapter 2
18	152001	2	#8-32 3/8" Hex Nut
19	824081	1	R.C. Network Assembly



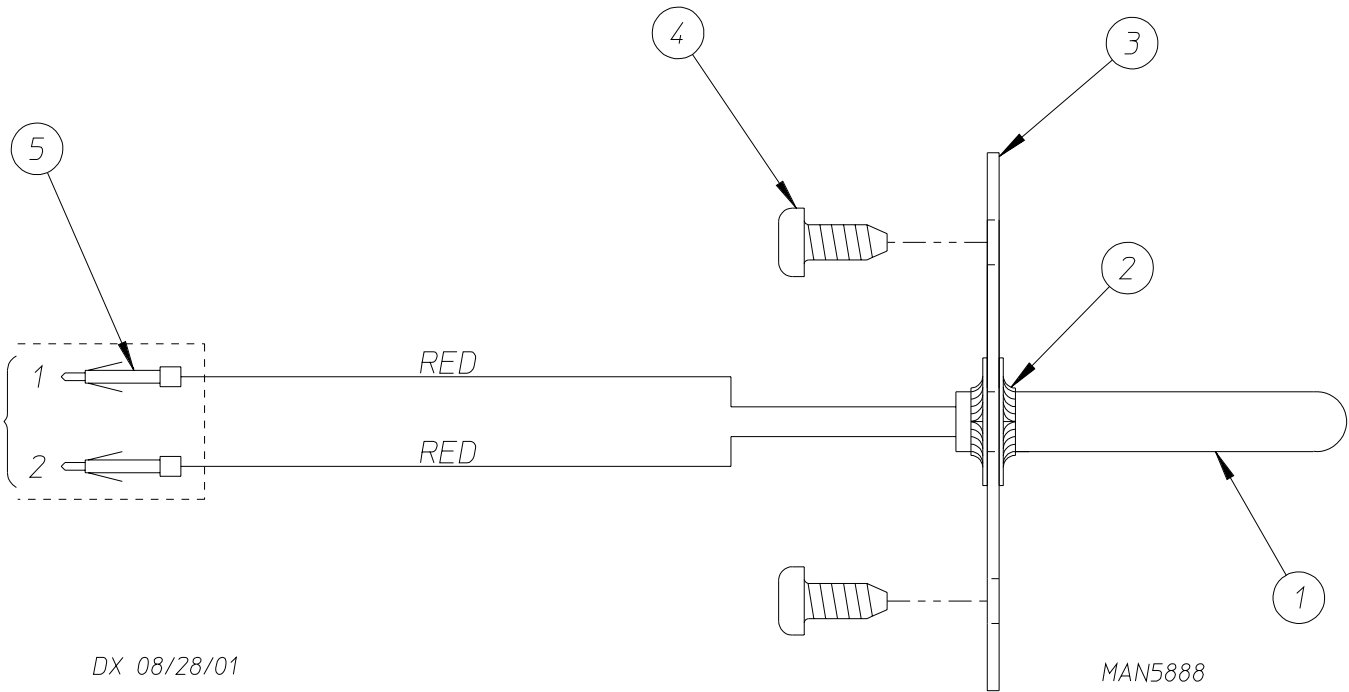
# Fire Suppression System Solenoid Assembly

For Models Mfd. prior to September 23, 2004

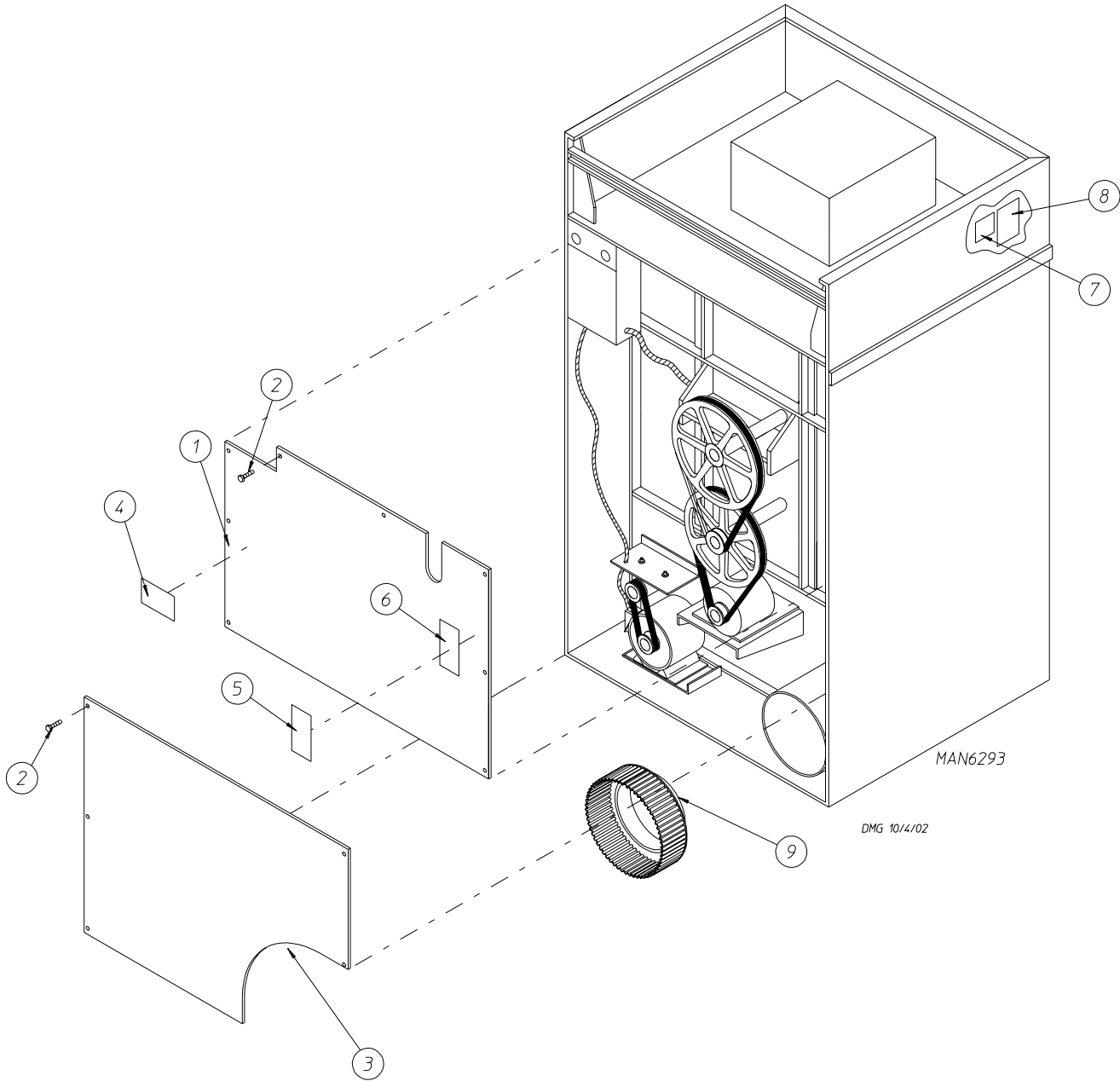


Illus. No.	Part No.	Qty.	Description
1	165114	1	Solenoid Valve 24 VAC 50/60 Hz
2	143220	2	3/8" F.P.T. Brass Tee
3	143251	1	3/8" M.P.T. Brass Plug
4	143208	2	3/8" Comp x 3/8" M.P.T. Brass Connector
5	143108	1	20" Long Stainless Steel Flexible Tubing
6	311588	1	Sprinkler Head Mounting Plate
7	143303	1	3/8" N.P.T. Brass Lock Nut
8	143301	1	3/8" Brass 45° Elbow
9	152001	2	#8-32 x 3/8" OD Hex Nut
10	150430	2	#10 x 1/2" Self-Drilling Screw
11	143581	1	3 GPM 3/8" F.P.T. Spray Nozzle
12	143025	1	3/8" N.P.T. Nylon Hose Adapter
13	824081	1	RC Network Assembly
14	143315	1	3/8" x 1/8" Bushing
15	182579	1	3/8" Hex Nipple
			(for models mfd. as of December 1, 2003)
16	136987	1	Pressure Switch
			(for models mfd. as of December 1, 2003)

# Fire Suppression System Temperature Probe Assembly



Illus. No.	Part No.	Qty.	Description
1	822752	1	Fire Suppression System Temperature Probe Assembly (includes illus. nos. 1 through 5)
2	154007	2	Push-On Fastener
3	390390	1	Sensor Bracket
4	150411	2	#8-18 Phillips Pan Head TEK Screw
5	122647	1	Connector
	122690	2	Pin



Illus. No.	Part No.	Qty.	Description
1	853124	1	Top Back Guard
2	150301	12	#8-18 x 7/16" Phillips Pan Head TEK Screw
3	354000	1	Lower Back Guard
4	112017	1	ADC Name and Address Label
5	112101	1	Installation Instructions Label
6	112519	1	Routine Maintenance Label
7	_____	1	Dryer Data Label (not for resale)
8	114521	1	Phase 7 Non-Coin Program Location Label (for microprocessor models Only)
9	850185	1	12" to 14" Increaser

## *Additional Parts Available*

---

<u>Part No.</u>	<u>Description</u>
112280	"Clean Lint Screen" Label
114001	"CAUTION – Exhausted / Lint Screen" Label
114006	"WARNING – Fire Hazards" Label
120100	3/8" Straight (BX) Connector
120300	3/8" x 45° (BX) Connector
120400	3/8" Red Jacket (BX) Insulator
120500	3/8" Jiffy Clip (BX retainer clip)
120600	3/8" Greenfield (BX)
120800	1/4" In-Line Connector
120802	Red Butt Connector
120902	#74B Wire Nut
120903	Crimp-On Wire Nut
121026	Tab Receptacle Combination
121499	5-1/2" Harness Tie
121500	8" Harness Tie
121507	Snap Wire Tie Screw Mount
122566	1/4" Insulated (female) Terminal
122804	Manometer (water column test gauge)



