



ML-170 Parts Manual

Phase 7 Microprocessor Models

Dual Timer Models

2001 thru 2002

American Dryer Corporation
88 Currant Road
Fall River, MA 02720-4781
Telephone: (508) 678-9000 / Fax: (508) 678-9447
E-mail: techsupport@amdry.com
www.amdry.com

Retain This Manual In A Safe Place For Future Reference

American Dryer Corporation products embody advanced concepts in engineering, design, and safety. If this product is properly maintained, it will provide many years of safe, efficient, and trouble-free operation.

ONLY qualified technicians should service this equipment.

OBSERVE ALL SAFETY PRECAUTIONS displayed on the equipment or specified in the installation manual included with the dryer.

The following “**FOR YOUR SAFETY**” caution **must be** posted near the dryer in a prominent location.

FOR YOUR SAFETY

Do not store or use gasoline or other flammable vapors and liquids in the vicinity of this or any other appliance.

POUR VOTRE SÉCURITÉ

Ne pas entreposer ni utiliser d'essence ni d'autres vapeurs ou liquides inflammables à proximité de cet appareil ou de tout autre appareil.

We have tried to make this manual as complete as possible and hope you will find it useful. **ADC** reserves the right to make changes from time to time, without notice or obligation, in prices, specifications, colors, and material, and to change or discontinue models.

Important

For your convenience, log the following information:

DATE OF PURCHASE _____ **MODEL NO.** **ML-170 Phase 7**

RESELLER'S NAME _____

Serial Number(s) _____

Replacement parts can be obtained from your reseller or the **ADC** factory. When ordering replacement parts from the factory, you can FAX your order to **ADC** at (508) 678-9447 or telephone your order directly to the **ADC** Parts Department at (508) 678-9000. Please specify the dryer **model number** and **serial number** in addition to the **description** and **part number**, so that your order is processed accurately and promptly.

The illustrations on the following pages may not depict your particular dryer exactly. The illustrations are a composite of the various dryer models. Be sure to check the descriptions of the parts thoroughly before ordering.

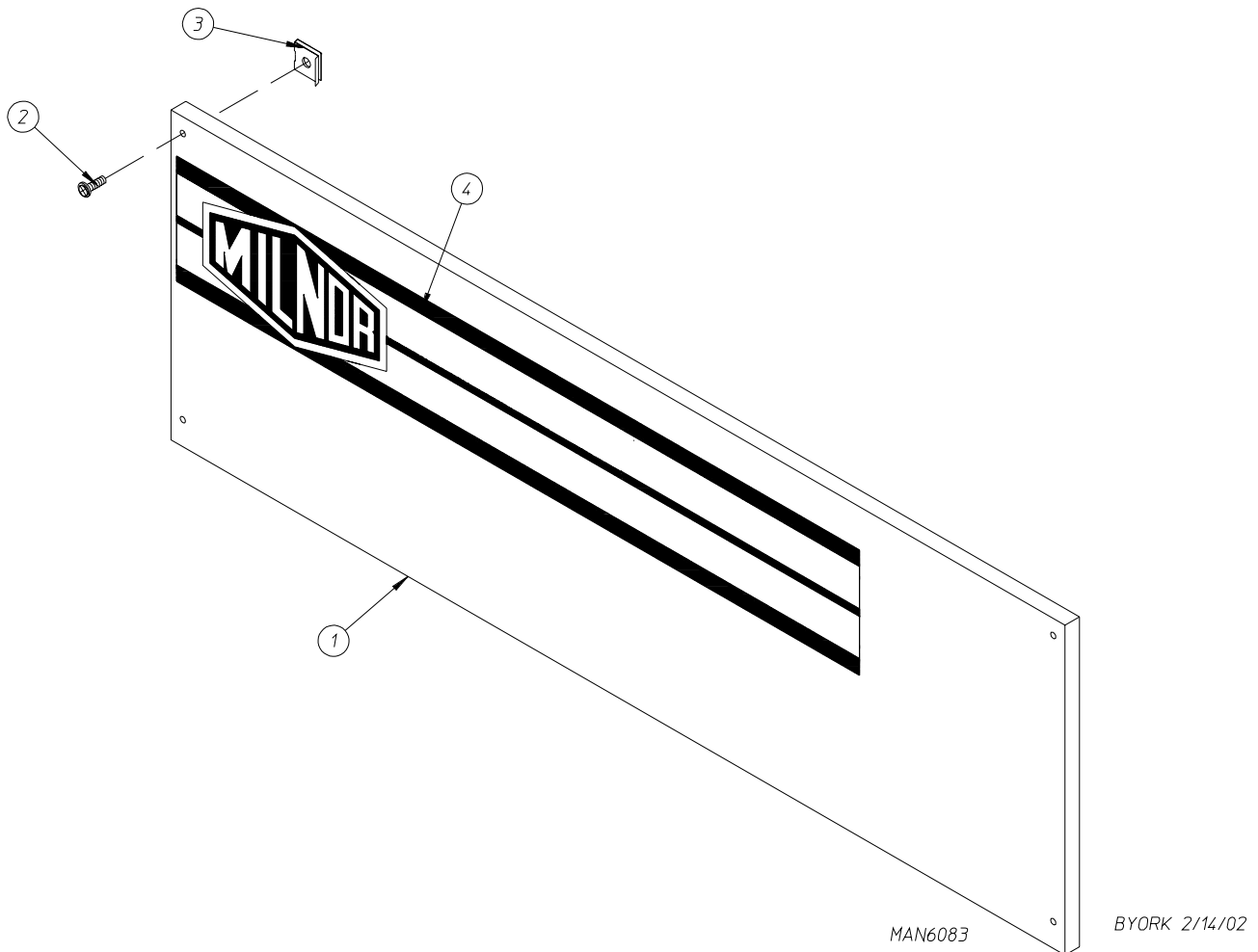
“IMPORTANT NOTE TO PURCHASER”

Information **must be** obtained from your local gas supplier on the instructions to be followed if the user smells gas. These instructions **must be** posted in a prominent location near the dryer.

Table of Contents

Control Door Assembly	
For Models mfd. as of September 20, 2001	2
Control Door Assembly	
For Models mfd. prior to September 20, 2001	3
Phase 7 OPL Microprocessor Control Panel Assembly	4
Dual Timer Control Panel Assembly	5
Front Panel/Main Door Assemblies	6, 7
Main Door Switch Assembly	8
Basket (Tumbler)/Support Assemblies	9
Lint Door Assembly	10
Lint Drawer/Lint Drawer Switch Box Assemblies	11
Basket (Tumbler) Bearing Mount Assembly	12, 13
Idler Bearing Mount Assembly	14, 15
T.E.F.C. Basket (Tumbler) Motor Mount Assembly	16, 17
Fan (Impellor/Blower) Shaft Assembly	18, 19
Blower Motor Mount Assembly	20, 21
Microprocessor Temperature Sensor Bracket Assembly	22
Dual Timer Temperature Sensor Bracket Assembly	23
Direct Spark Ignition (DSI) Burner Assembly	24, 25
Sail Switch Assembly	26
Air Jet Assembly	27
Steam Damper Assembly	
For Steam Models Only	28, 29
Microprocessor Reversing Contactor Mounting Panel Assembly	
For 208-240V Transformers	30, 31
Microprocessor Reversing Contactor Mounting Panel Assembly	
For 380-416V Transformers	32, 33
Microprocessor Reversing Contactor Mounting Panel Assembly	
For 460-480V Transformers	34, 35
Pneumatic Valve Assembly	
For Gas Models Only	36
Pneumatic Valve Assembly	
For Steam Models Only	37
Top Console Assembly	38, 39
F.S.S. Temperature Probe Assembly	40
F.S.S. Solenoid Assembly	41
Back Guard Assemblies	42, 43
Additional Parts Available	44

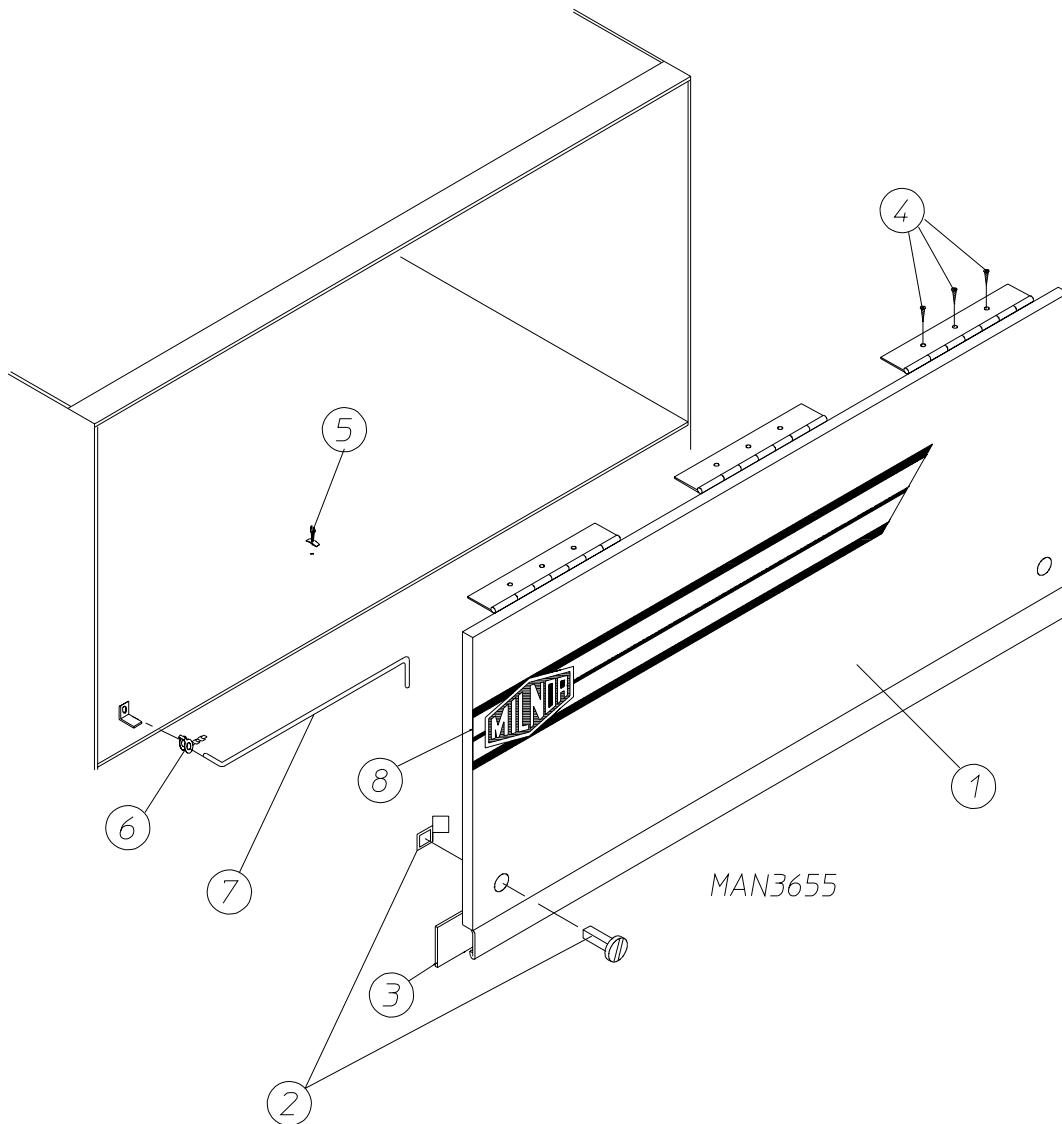
For models mfd. as of September 20, 2001



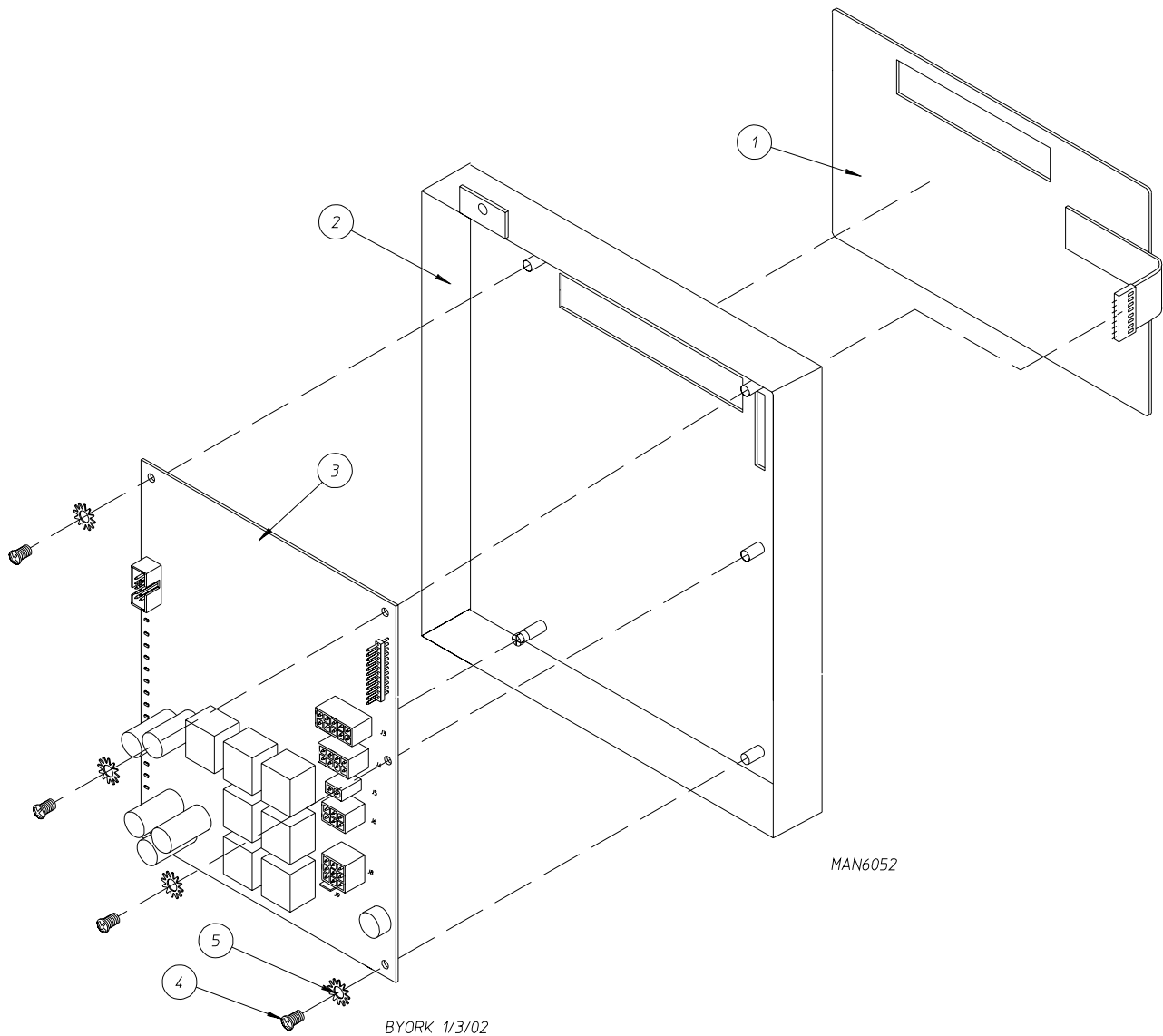
<u>Illus. No.</u>	<u>Part No.</u>	<u>Qty.</u>	<u>Description</u>
1*	334370	1	Phase 7 Control Door (gas)
	328346	1	Phase 7 Control Door (steam)
	883256	1	Phase 7 Control Door Assembly without Hinge
2	150314	4	#10-32 x 1/2" TORX Screw
3	154011	4	#10-32 Multi-Thread U-Nut
4	112366	1	Milnor Logo

* Specify color when ordering.

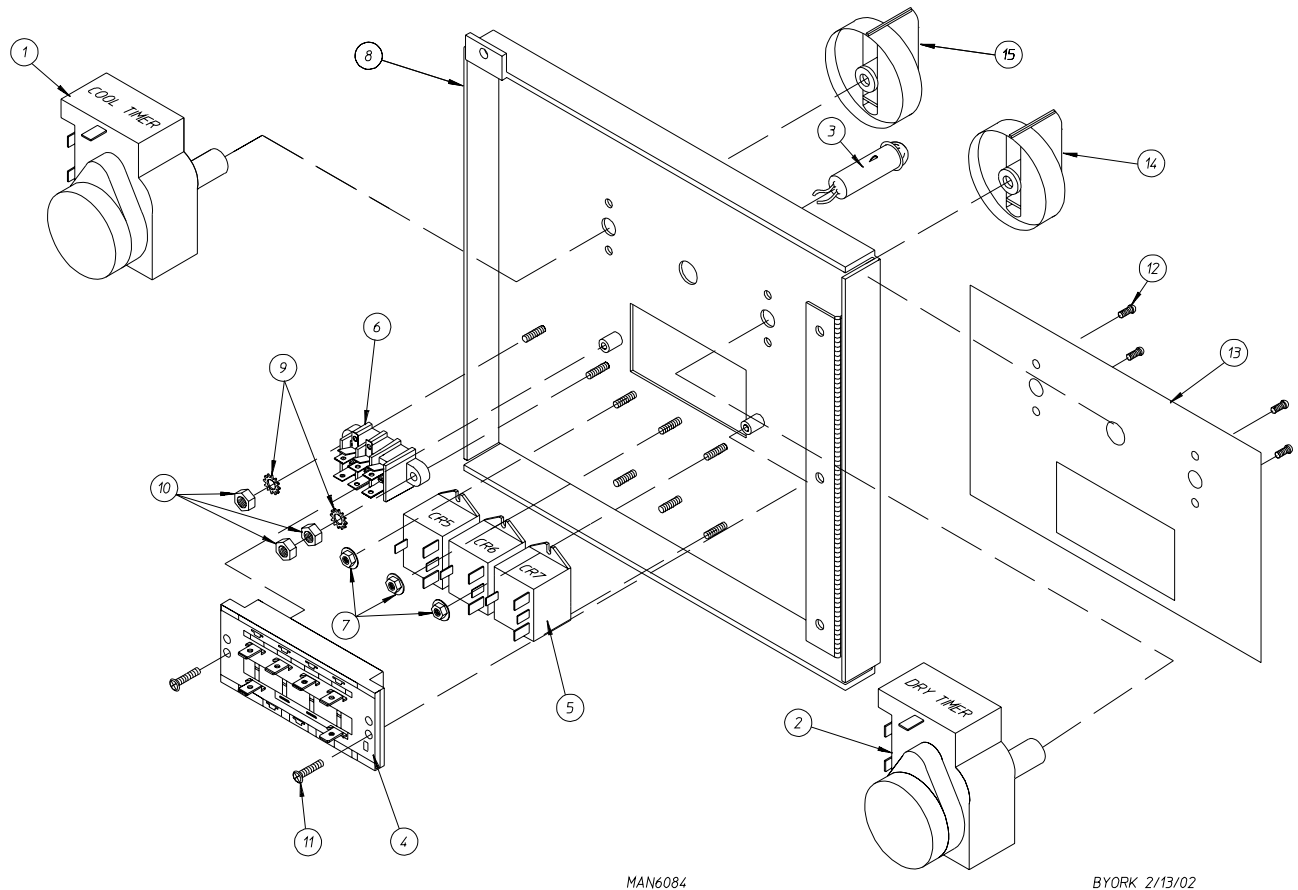
For models mds. prior to September 20, 2001



Illus. No.	Part No.	Qty.	Description
1	882495	1	White Control Door Assembly (includes illus. nos. 1, 2, and 3)
	882493	1	White Control Door ONLY
	882496	1	Coral Wrinkle Blue Control Door Assembly (includes illus. nos. 1, 2, and 3)
	882494	1	Coral Wrinkle Blue Control Door ONLY
2	882541	2	Spring Turn Latch (2-piece)
3	117603	5	Noise Suppressor Tape (sold by the foot)
4	150309	9	#10-16 x 1/2" Hex Head TEK Crimptite Screw
5	102603	1	Control Door Support Rod Catch
6	102601	1	Control Door Rod Retainer Clip
7	102505	1	Control Door Support Rod
8	112368	1	Milnor Logo ONLY

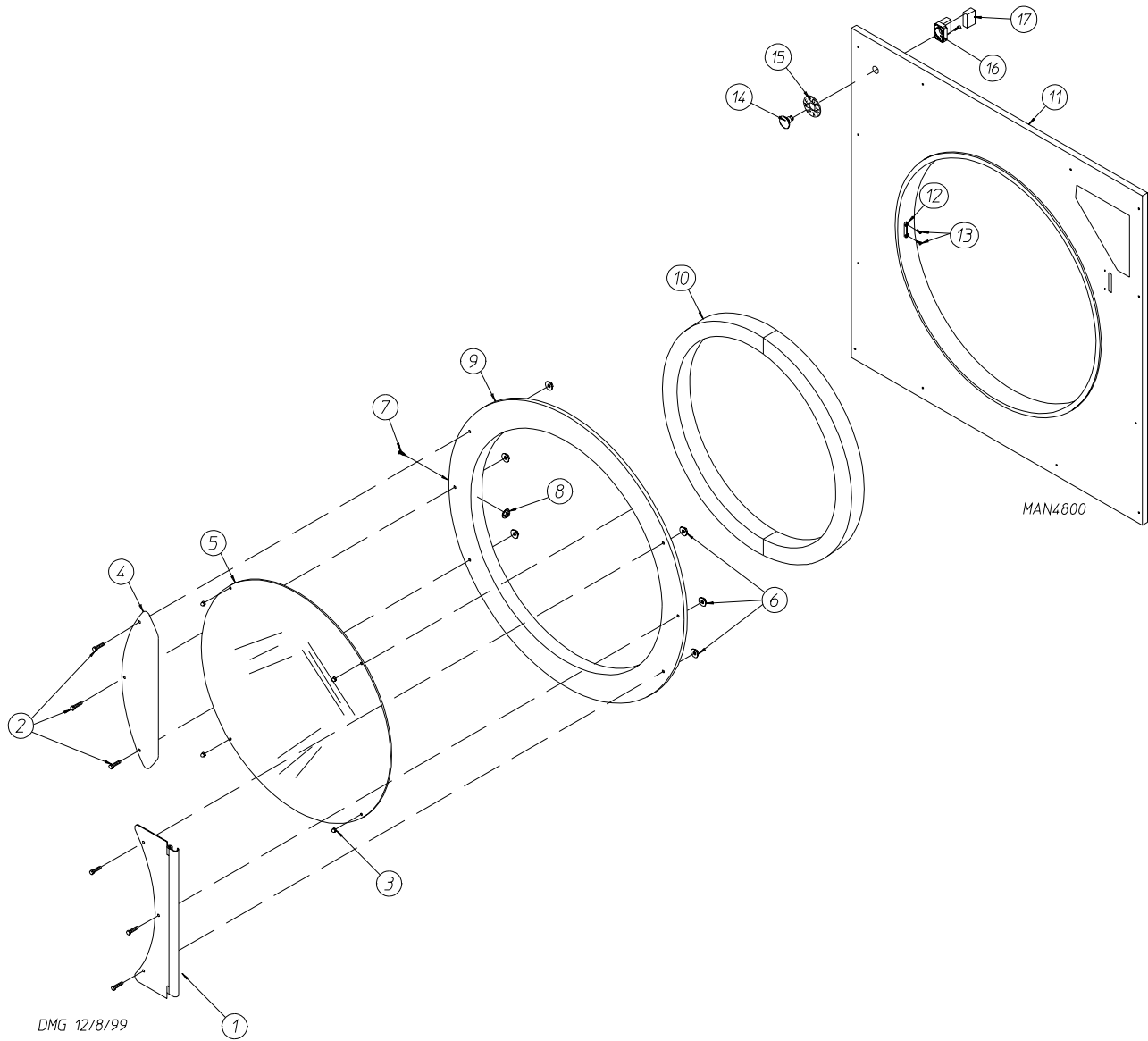


<u>Illus. No.</u>	<u>Part No.</u>	<u>Qty.</u>	<u>Description</u>
1	112571	1	Phase 7 OPL Keyboard
2	850980	1	Phase 7 Microprocessor Controller (computer) Panel ONLY
	822754	1	Phase 7 OPL Reversing Microprocessor Controller (computer) Control Panel Assembly Complete (includes illus. nos. 1 through 5)
3	137247	1	Phase 7 OPL Microprocessor Controller (computer) ONLY
4	150005	2	#6-32 x 3/4" Phillips Round Head Machine Screw
5	153010	2	#6 Star Washer

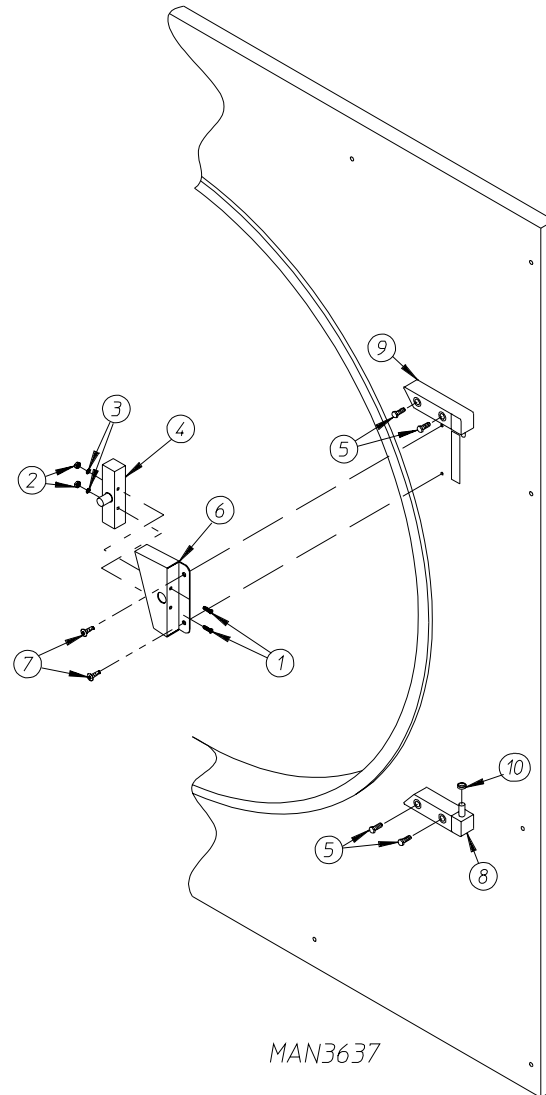


<u>Illus. No.</u>	<u>Part No.</u>	<u>Qty.</u>	<u>Description</u>
1	824298	1	15 Minute Timer with Terminals
2	824299	1	60 Minute Timer with Terminals
3	824175	1	Red Pilot Light (with terminals)
4	122301	1	Tap-Touch Switch
5	131932	3	Relay SPST 24V
6	120708	1	Terminal Strip
7	151000	6	#6-32 Pal Nut
8	824099	1	Dual Timer Panel Assembly
9	153010	2	#6 Star Washer
10	152000	3	#6-32 Hex Nut
11	150108	2	#8-32 x 1/2" Round Head Machine Screw
12	150110	4	#8-32 x 1/4" Phillips Round Head Screw
13	112563	1	Dual Timer Panel Overlay
14	124104	1	Touch Knob with Blue Pointer
15	124105	1	Touch Knob with Red Pointer
16*	824246	1	Harness
17*	824287	1	Panel Wiring
18*	121050	5	5/16" Black Heat Shrink Tube

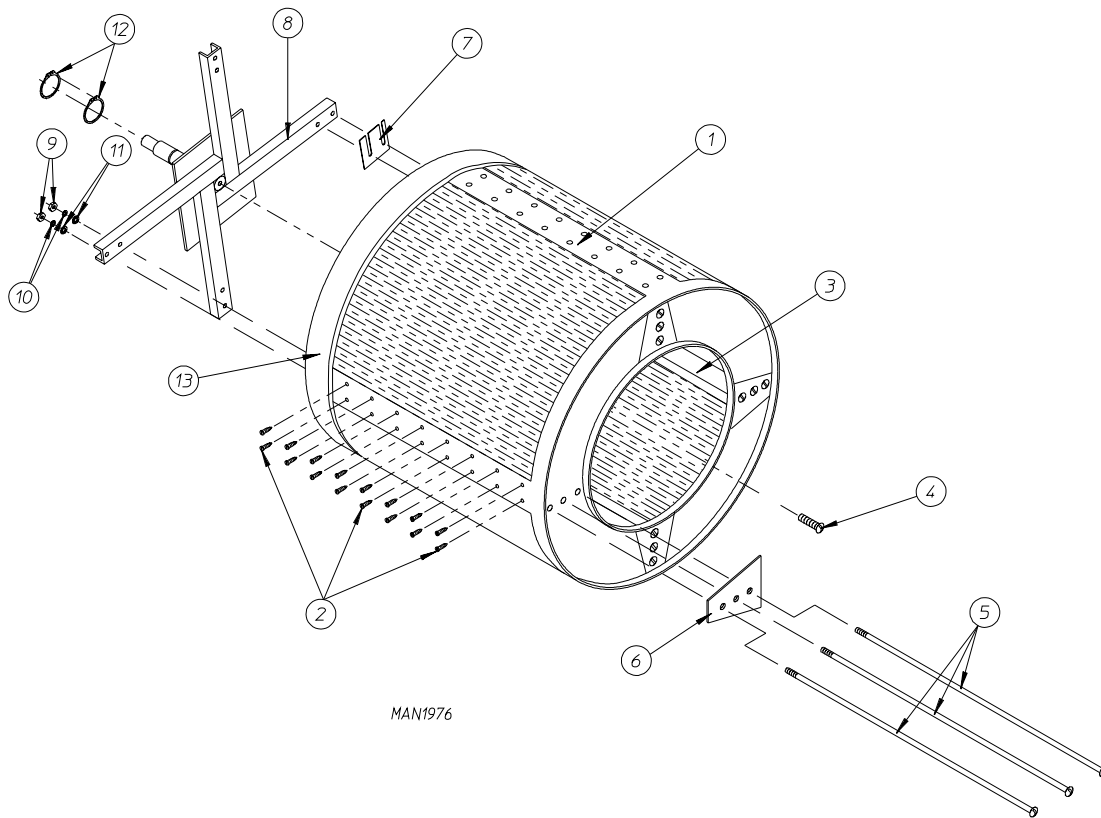
* Items not shown.



<u>Illus. No.</u>	<u>Part No.</u>	<u>Qty.</u>	<u>Description</u>
1	881685	1	White Main Door Hinge
	882296	1	Coral Wrinkle Blue Main Door Hinge
2	881740	6	1/4-20 x 5/8" White Carriage Bolt
	881739	6	1/4-20 x 5/8" Coral Wrinkle Blue Carriage Bolt
3	151012	1	#10-32 White Acorn Nut
4	881688	1	White Main Door Handle
	881737	1	Blue Main Door Handle
5	102214	1	30" Door Glass
	170730	1	Door Glass Adhesive (10.3 oz. cartridge)
6	881806	6	1/4-20 White Free Spin Wash Nut
	882293	6	1/4-20 Coral Wrinkle Blue Free Spin Wash Nut
7	150120	1	Main Door Latch Screw (#10-32 dome hex head screw)
8	151010	1	#10-32 Acorn Nut
9	881689	1	White Main Door Assembly Complete (includes illus. nos. 2 through 10)
	881761	1	Coral Wrinkle Blue Main Door Assembly Complete (includes illus. nos. 2 through 10)
	881966	1	White Main Door Ring
	882305	1	Coral Wrinkle Blue Cold Rolled Steel (CRS) Large Main Door Ring
10	882411	1	Extruded Steel Door Gasket
11	882503	1	White Front Panel Assembly (includes illus. nos. 1, 15, and 16)
	882504	1	Coral Wrinkle Blue Front Panel Assembly (includes illus. nos. 1, 15, and 16)
12	170330	1	Friction Door Latch
13	154215	2	5/32" Pop Rivet
14	122351	1	"EMERGENCY STOP" (E-Stop) Push-Pull Button
15	122419	1	"EMERGENCY STOP" (E-Stop) Nameplate
16	132387	1	Normally Closed (N.C.) Contact Block
17	132395	1	Normally Closed (N.C.) Contact Block with Base



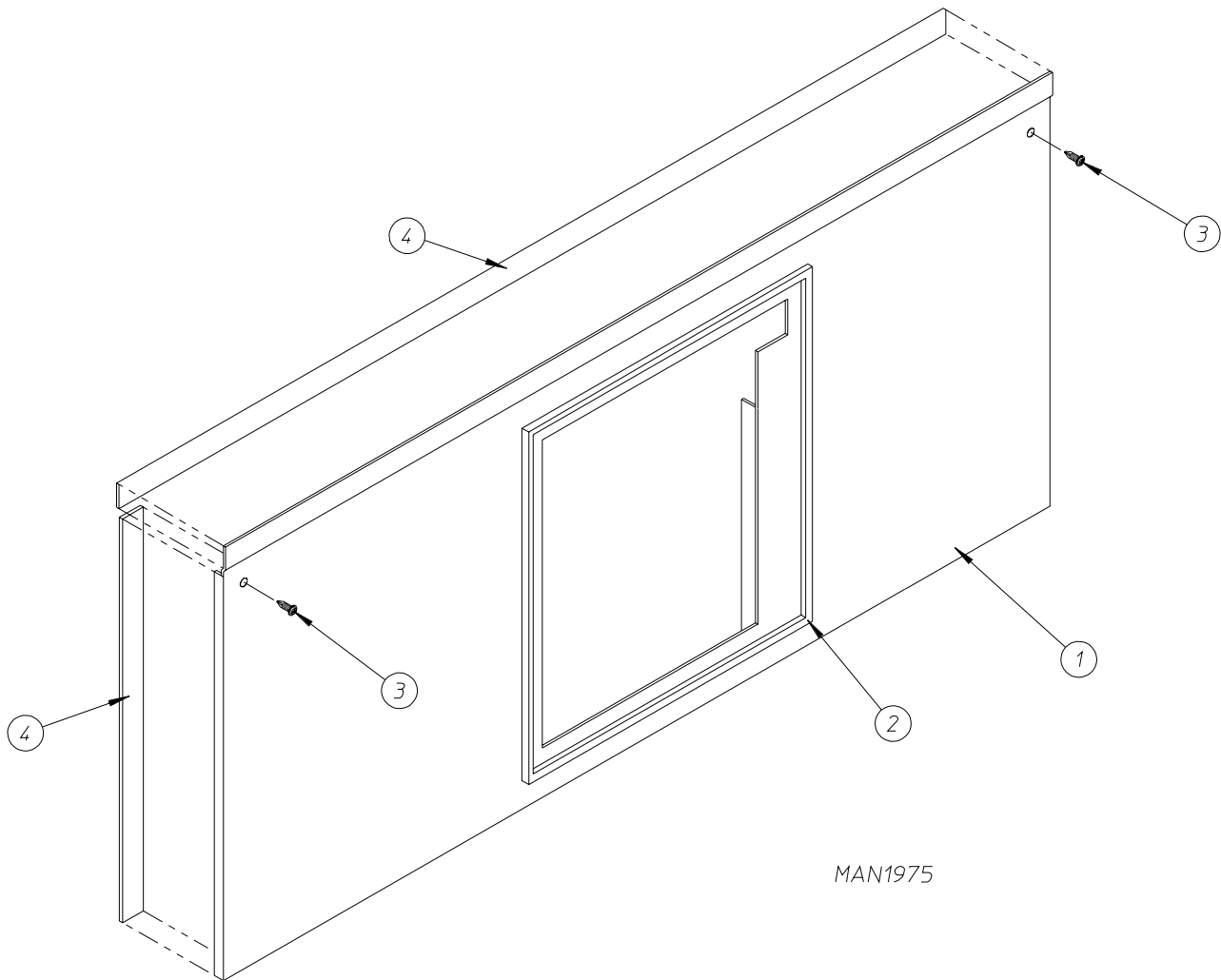
<u>Illus. No.</u>	<u>Part No.</u>	<u>Qty.</u>	<u>Description</u>
1	150006	2	#6-32 x 7/8" Phillips Pan Head Machine Screw
2	152013	2	#6-32 Hex Nut
3	153010	2	#6 Star Washer
4	137005	1	Single-Pole Door Switch
5	150443	4	1/4-20 x 3/4" Stainless Steel Cap Screw
6	881687	1	White Main Door Switch Housing ONLY
	881695	1	Blue Main Door Switch Housing ONLY
	881702	1	White Main Door Switch with Housing Assembly (includes illus. nos. 1 through 4 and 6)
	881700	1	Blue Main Door Switch with Housing Assembly (includes illus. nos. 1 through 4 and 6)
7	150443	2	1/4-20 x 3/4" Stainless Steel Cap Screw
8	881441	1	White Bottom Hinge Block
	881735	1	Blue Bottom Hinge Block
9	881440	1	White Top Hinge Block
	881736	1	Blue Top Hinge Block
10	153031	1	Nylon Washer



<u>Illus. No.</u>	<u>Part No.</u>	<u>Qty.</u>	<u>Description</u>
1	820979*	1	Basket (tumbler) ONLY without Felt Collar
	821795	1	Basket (tumbler) and Support Assembly Complete (includes illus. nos. 1 through 13) For Models Mfd. as of August 27, 1997
	821001	1	Basket (tumbler) and Support Assembly Complete (includes illus. nos. 1 through 13) For Models Mfd. prior to August 27, 1997
2	150309	64	#10-16 x 1/2" Hex Head TEK Crimptite Screw
3	332140	4	Basket (tumbler) Rib ONLY
4	150500	1	5/16-18 x 3/4" Socket Button Head Screw
5	100910	12	1/2-13 x 44" Tie Rod
6	332139	4	Basket (tumbler) Reinforcing Plate ONLY
7	332177	**	Basket (tumbler) Shim ONLY
8	821191	1	Basket (tumbler) Support ONLY
9	152009	12	7/16-14 Hex Nut
10	153013	12	7/16" Lock Washer
11	153011	12	9/16" Flat Washer
12	100810	2	3-1/8" Retaining Ring
13	116007	1	Felt Collar ONLY

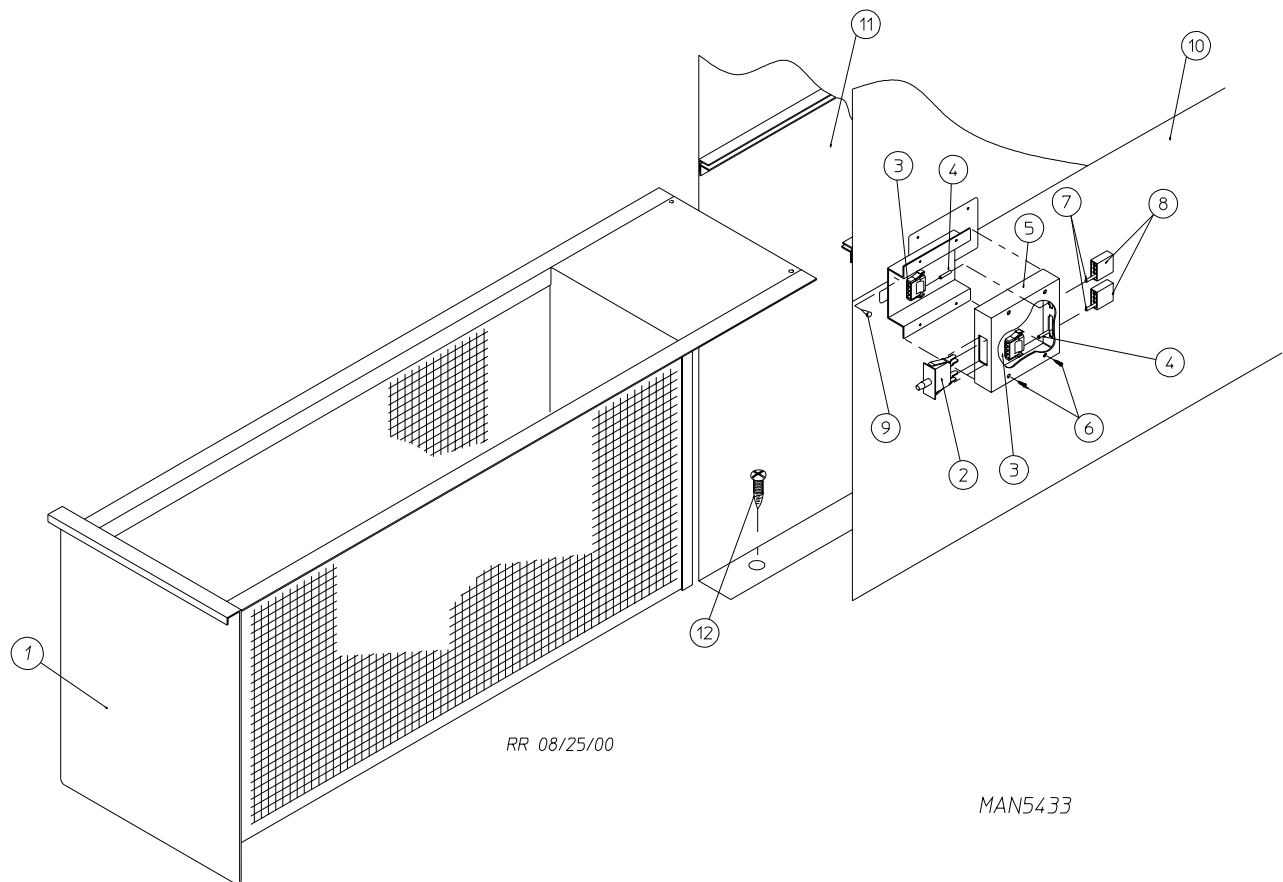
* Felt collar is not included and **must be** ordered separately.

** As required.



MAN1975

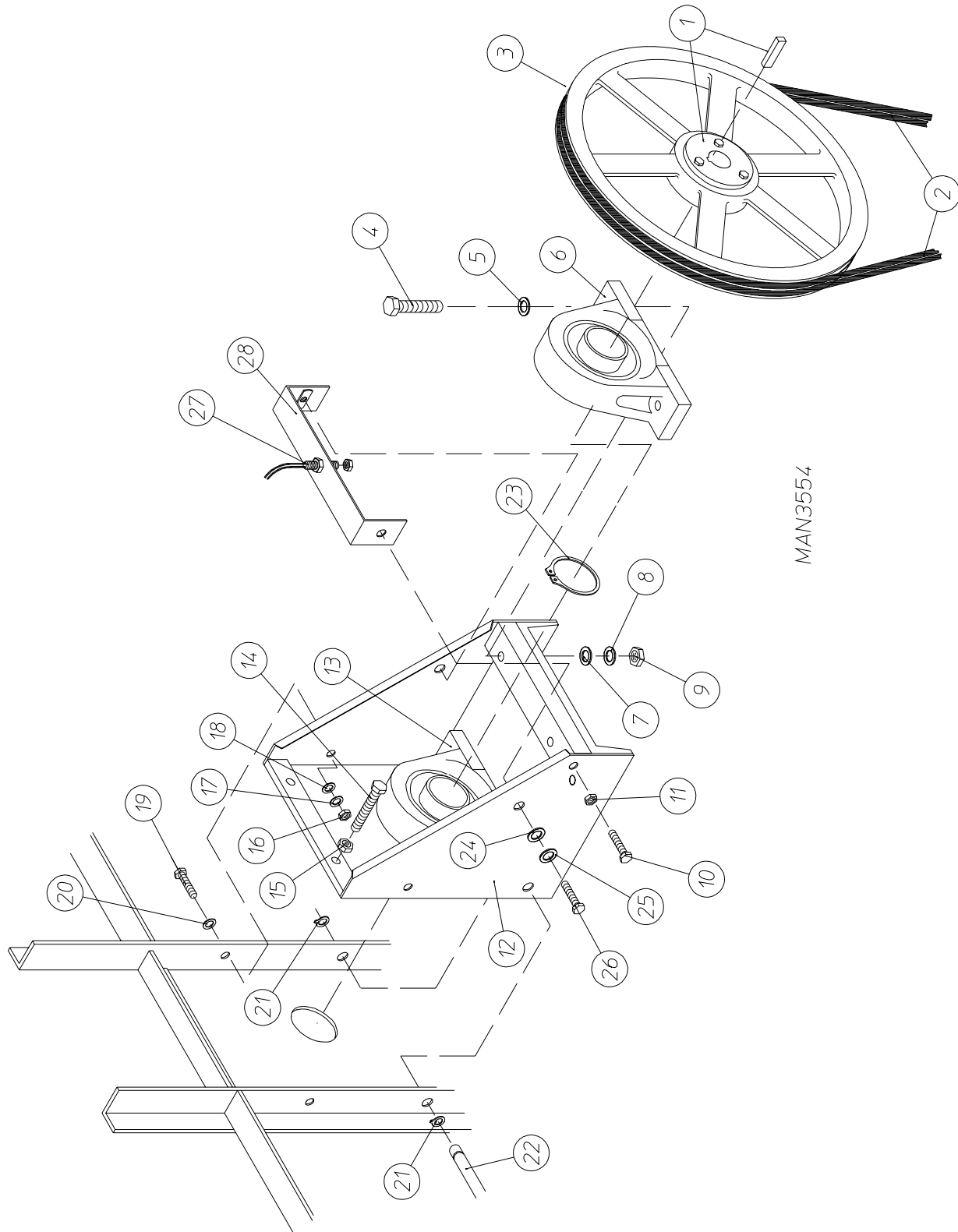
<u>Illus. No.</u>	<u>Part No.</u>	<u>Qty.</u>	<u>Description</u>
1	882497	1	White Lint Door Assembly (includes illus. nos. 1, 2, and 4)
	882498	1	Coral Wrinkle Blue Lint Door Assembly (includes illus. nos. 1, 2, and 4)
2	117605	5	Neoprene Sponge Tape (sold by the foot) (for models mfd. as of July 13, 1998)
	117602	5	Noise Suppressor Tape (sold by the foot) (for models mfd. prior to July 13, 1998)
3	150309	5	#10-16 x 1/2" Hex Head TEK Crimptite Screw
4	117604	5	Neoprene Sponge Tape (sold by the foot) (for models mfd. as of July 13, 1998)
	117600	9	Noise Suppressor Tape (sold by the foot) (for models mfd. prior to July 13, 1998)



RR 08/25/00

MAN5433

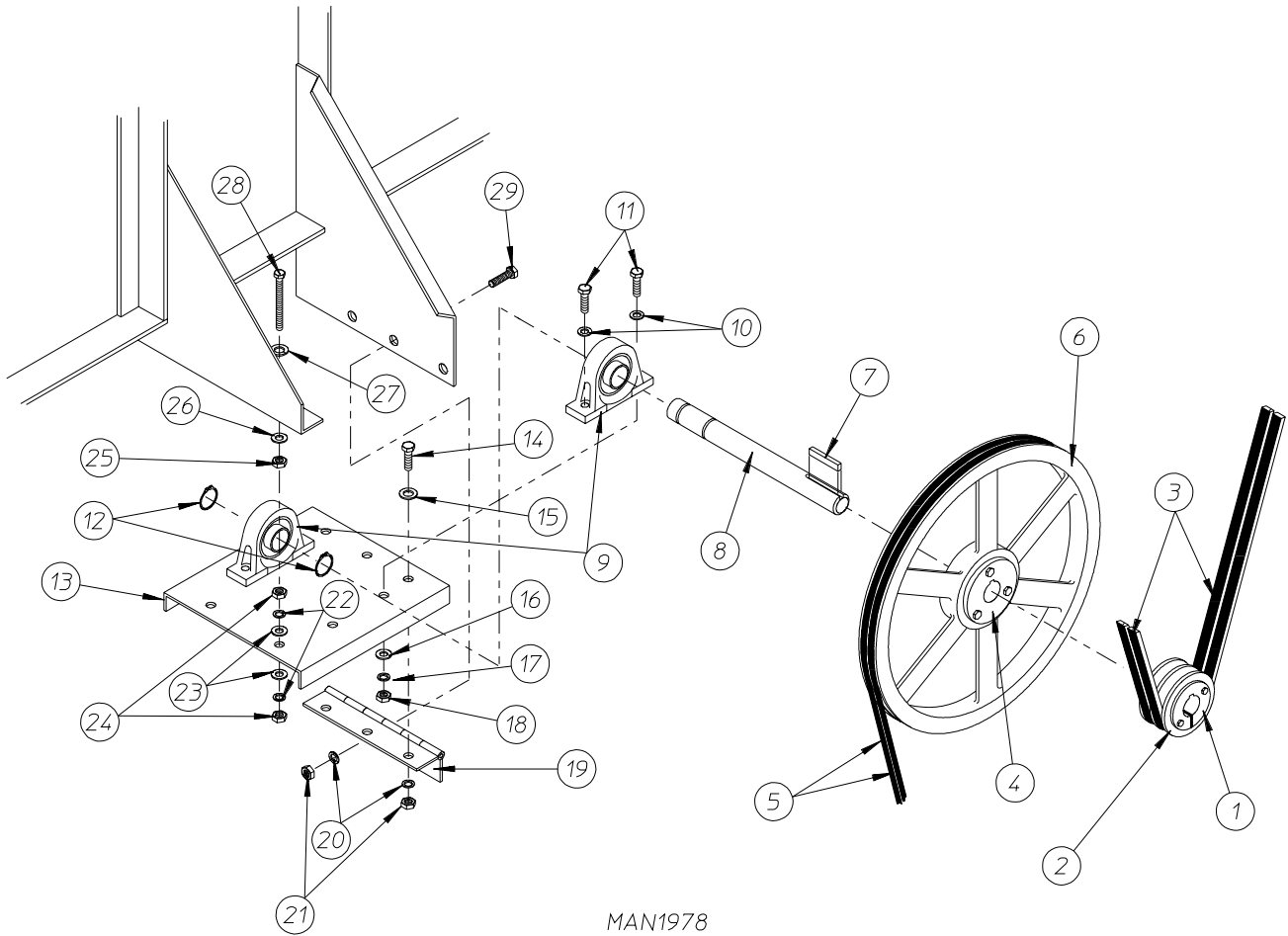
Illus. No.	Part No.	Qty.	Description
1	882792	1	White Lint Drawer/Screen Assembly
	882793	1	Coral Wrinkle Blue Lint Drawer/Screen Assembly
2	122116	1	Lint Drawer Switch ONLY
3	122605	1	4-Pin Socket Connector
4	122701	2	Socket Terminal ONLY
	122801	1	Pin/Socket Extraction Tool
5	882507	1	Lint Drawer Switch Box Assembly Complete (includes illus. nos. 3 through 6)
6	150301	4	#8-18 x 7/16" Phillips Pan Head TEK Screw
7	122700	2	Pin Terminal ONLY
8	122604	1	4-Pin Connector
9	150301	2	#8-18 x 7/16" Phillips Pan Head TEK Screw
10	319076	1	Right Hand Divider Panel
11	319077	1	Left Hand Divider Panel
12	150301	14	#8-18 x 7/16" Phillips Pan Head TEK Screw



MAN3554

<u>Illus. No.</u>	<u>Part No.</u>	<u>Qty.</u>	<u>Description</u>
1	101217	1	2-1/2" SF Bushing with Key
2*	100137	2	AB-91 V-Belt
3	101182	1	25" Basket (tumbler) Pulley ONLY
4	150602	4	5/8-11 x 3" Hex Head Machine Bolt
5	153016	4	5/8" Flat Washer
6	881775	1	2-1/2" Pillow Blocking Bearing with Nylock Setscrews (for models mfd. as of August 27, 1997)
	880883	1	3-1/8" Pillow Blocking Bearing with Nylock Setscrews (for models mfd. prior to August 27, 1997)
7	153016	4	5/8" Flat Washer
8	153015	4	5/8" Lock Washer
9	152010	4	5/8-11 Hex Nut
10	150600	2	3/8-16 x 1-1/2" Hex Head Machine Bolt
11	152005	2	3/8-16 Hex Nut
12	821175	1	Basket (tumbler) Bearing Mount ONLY (for models mfd. as of August 27, 1997)
	820910	1	Basket (tumbler) Bearing Mount ONLY (for models mfd. prior to August 27, 1997)
13	880883	1	3-1/8" Pillow Block Bearing with Nylock Setscrews
14	150604	2	1/2-20 x 3" Square Head Machine Bolt
15	152012	2	1/2-20 Hex Nut
16	152005	2	3/8-16 Hex Nut
17	153005	2	3/8" Lock Washer
18	153004	4	3/8" Flat Washer
19	150600	2	3/8-16 x 1-1/2" Hex Head Machine Bolt
20	153004	2	3/8" Flat Washer
21	100801	2	5/8" Retaining Ring
22	332153	1	5/8" Hinge Pin
23	100810	2	3-1/8" Retaining Ring
24	153018	2	1/4" Flat Washer
25	153007	2	1/4" Lock Washer
26	150512	2	1/4-20 x 1/2" Hex Head Machine Bolt
27	824807	1	Rotational Sensor Assembly
28	880841	1	Rotational Sensor Mounting Bracket

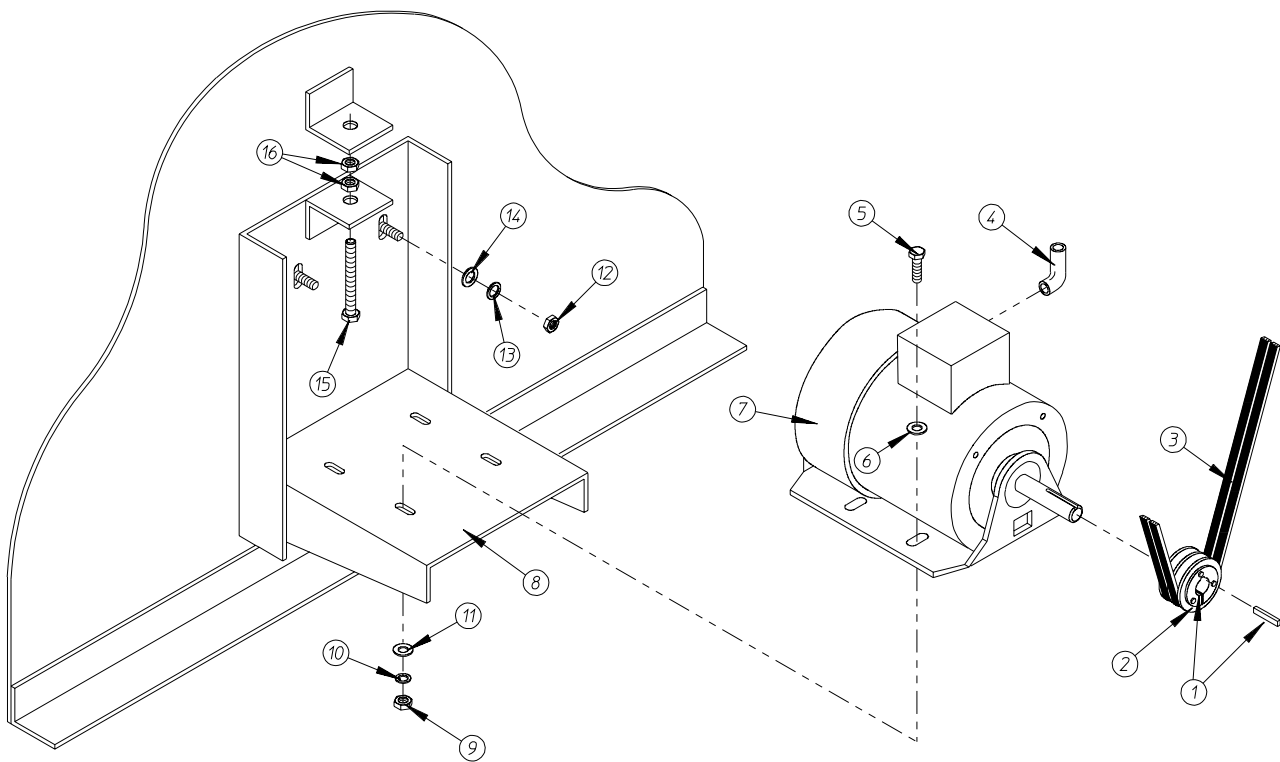
* Replace in match sets (both belts).



MAN1978

<u>Illus. No.</u>	<u>Part No.</u>	<u>Qty.</u>	<u>Description</u>
1	101152	1	SH x 1-3/8" Bushing
2	101143	1	2B x 3.8 Pulley
3*	100137	2	AB-91 "V" Belt
4	101184	1	SK x 1-3/8" Bore Bushing
5*	100102	2	3V-740 "V" Belt
6	101112	1	19" Idler Pulley ONLY
7	100730	1	5/16" x 5/16" x 4" Key
8	332152	1	Idler Shaft ONLY
9	881644	2	1-3/8" Pillow Block Bearing with Setscrews
10	153011	4	9/16" Flat Washer
11	150606	4	1/2-13 x 2" Hex Head Machine Bolt
12	100802	2	1-3/8" Retaining Ring
13	820932	1	Idler Bearing Mount Assembly Complete (includes illus. nos. 8 through 11 and 17 through 25)
	332151	1	Idler Bearing Mount ONLY
14	150501	3	5/16-18 x 3/4" Hex Head Machine Bolt
15	153001	3	5/16" Flat Washer
16	153011	4	9/16" Flat Washer
17	153026	4	1/2" Lock Washer
18	152011	4	1/2-13 Hex Nut
19	103005	1	Idler Adjustment Hinge ONLY
20	153002	6	5/16" Lock Washer
21	152004	6	5/16-18 Hex Nut
22	153005	4	3/8" Lock Washer
23	153004	4	3/8" Flat Washer
24	152005	4	3/8-16 Hex Nut
25	152005	2	3/8-16 Hex Nut
26	153005	2	3/8" Lock Washer
27	153005	2	3/8" Lock Washer
28	152034	2	3/8-16 x 3-1/2" Hex Head Bolt
29	150501	3	5/16-18 x 3/4" Hex Head Machine Bolt

* Replace in matched sets (both belts).

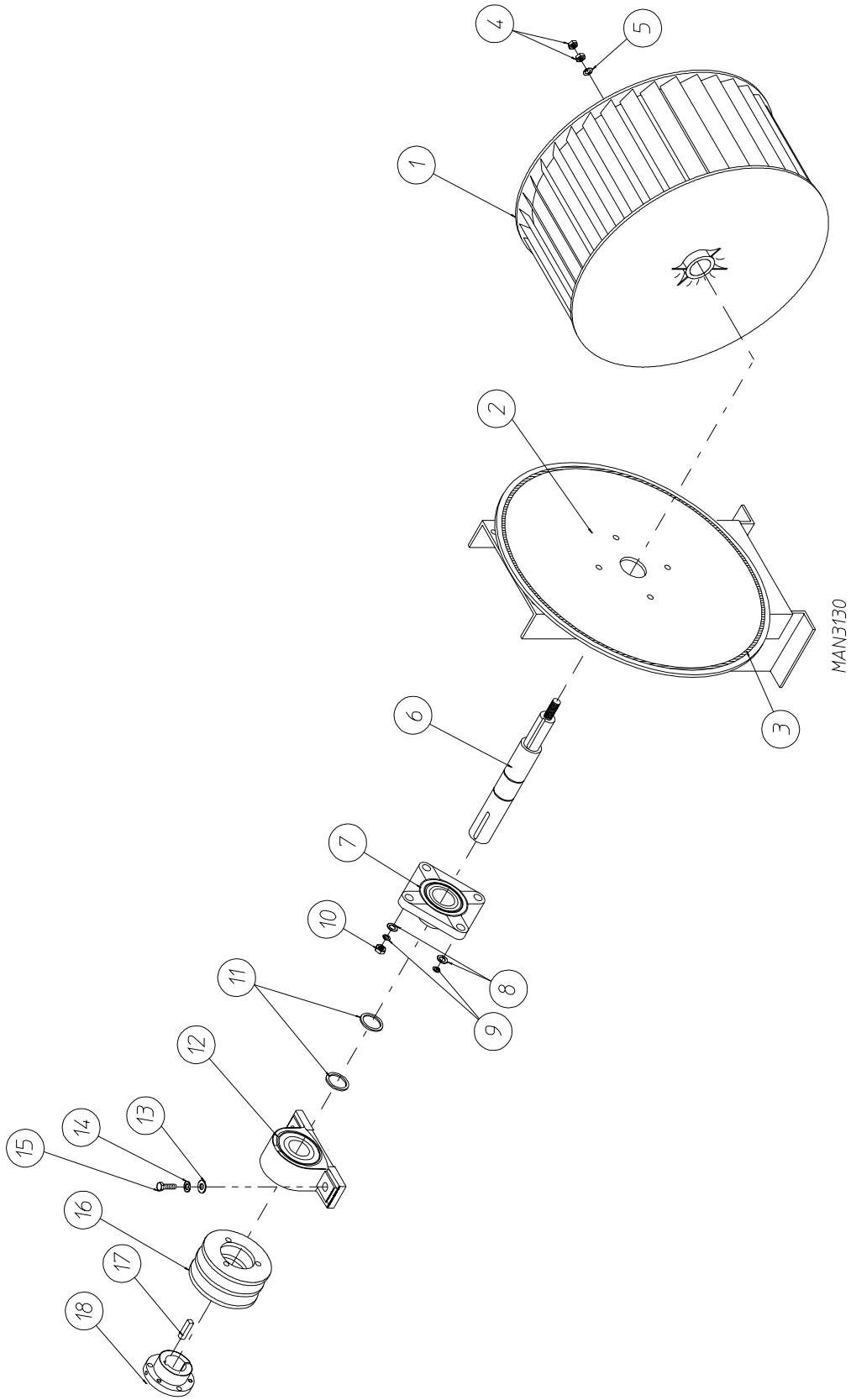


<u>Illus. No.</u>	<u>Part No.</u>	<u>Qty.</u>	<u>Description</u>
1	101121	1	5/8" SK Bushing
2	101114	1	2.65" Pulley (for 60 Hz models Only)
	101120	1	3.15" Pulley (for 50 Hz models Only)
3*	100102	2	3V-740 V-Belt
4	120200	1	3/8" x 90° Connector
5	150501	4	5/16-18 x 3/4" Hex Head Machine Bolt
6	153001	4	5/16" Flat Washer
7	100050	1	1 HP 208/230/380/460v 3ø 50/60 Hz Totally Enclosed, Fan-Cooled (T.E.F.C.) Motor (56Z frame)
8	800952	1	Basket (tumbler) Motor Mount (56Z frame)
	820941**	1	50/60 Hz Totally Enclosed, Fan-Cooled (T.E.F.C.) Basket (tumbler) Motor Mount Assembly Complete (includes illus. nos. 1, 4 through 11, 15, and 16) NOTE: Motor pulley must be ordered separately.
9	152004	4	5/16-18 Hex Nut
10	153002	4	5/16" Lock Washer
11	153001	4	5/16" Flat Washer
12	152004	4	5/16-18 Hex Nut
13	153002	4	5/16" Lock Washer
14	153001	4	5/16" Flat Washer
15	150619	1	3/8-16 x 3" Hex Head Machine Bolt
16	152005	2	3/8-16 Hex Nut

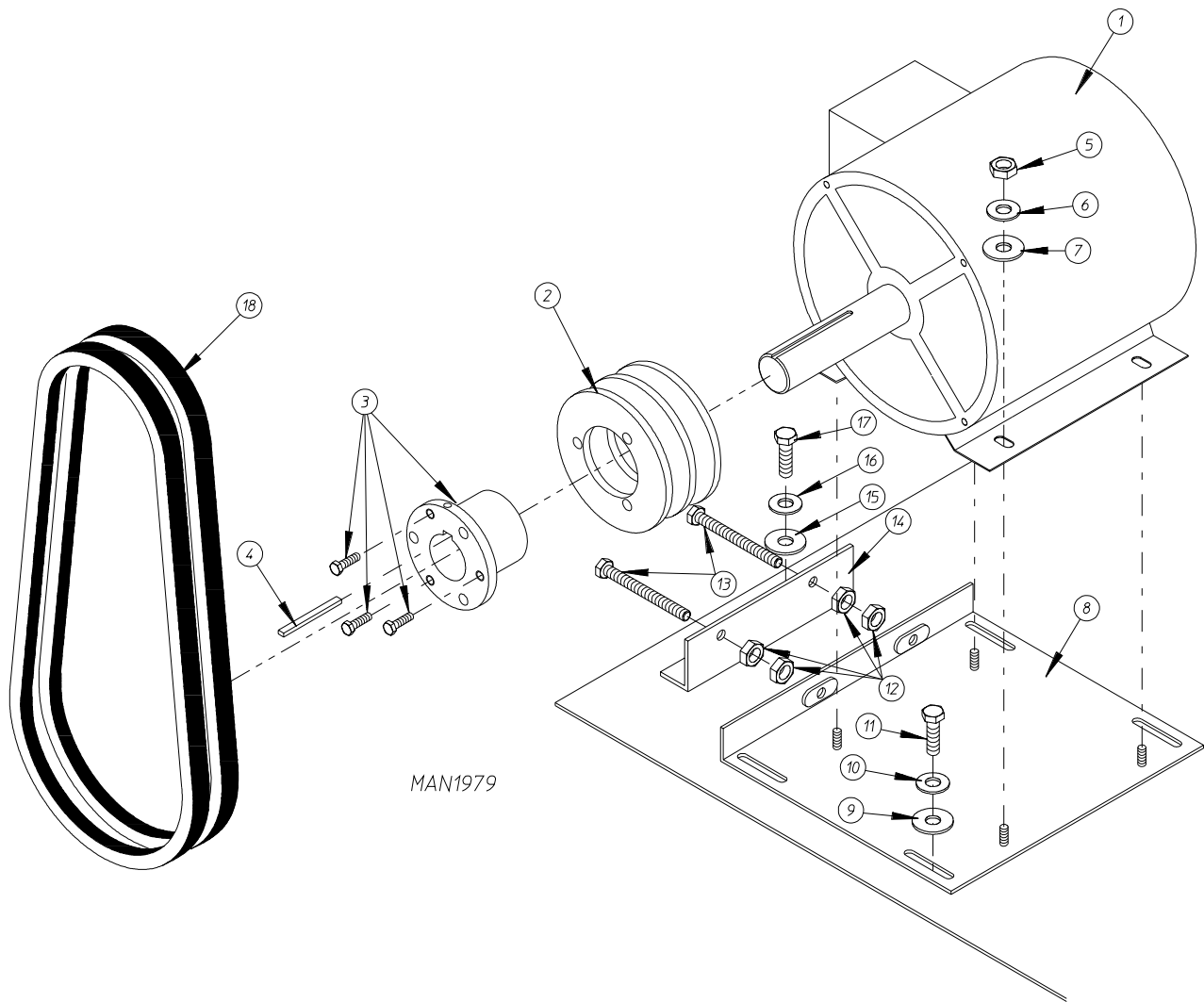
* Replace in matched sets (both belts).

** Specify color when ordering.

IMPORTANT: For voltages higher than 460v, contact the factory for correct part number of motor or motor mount assembly.

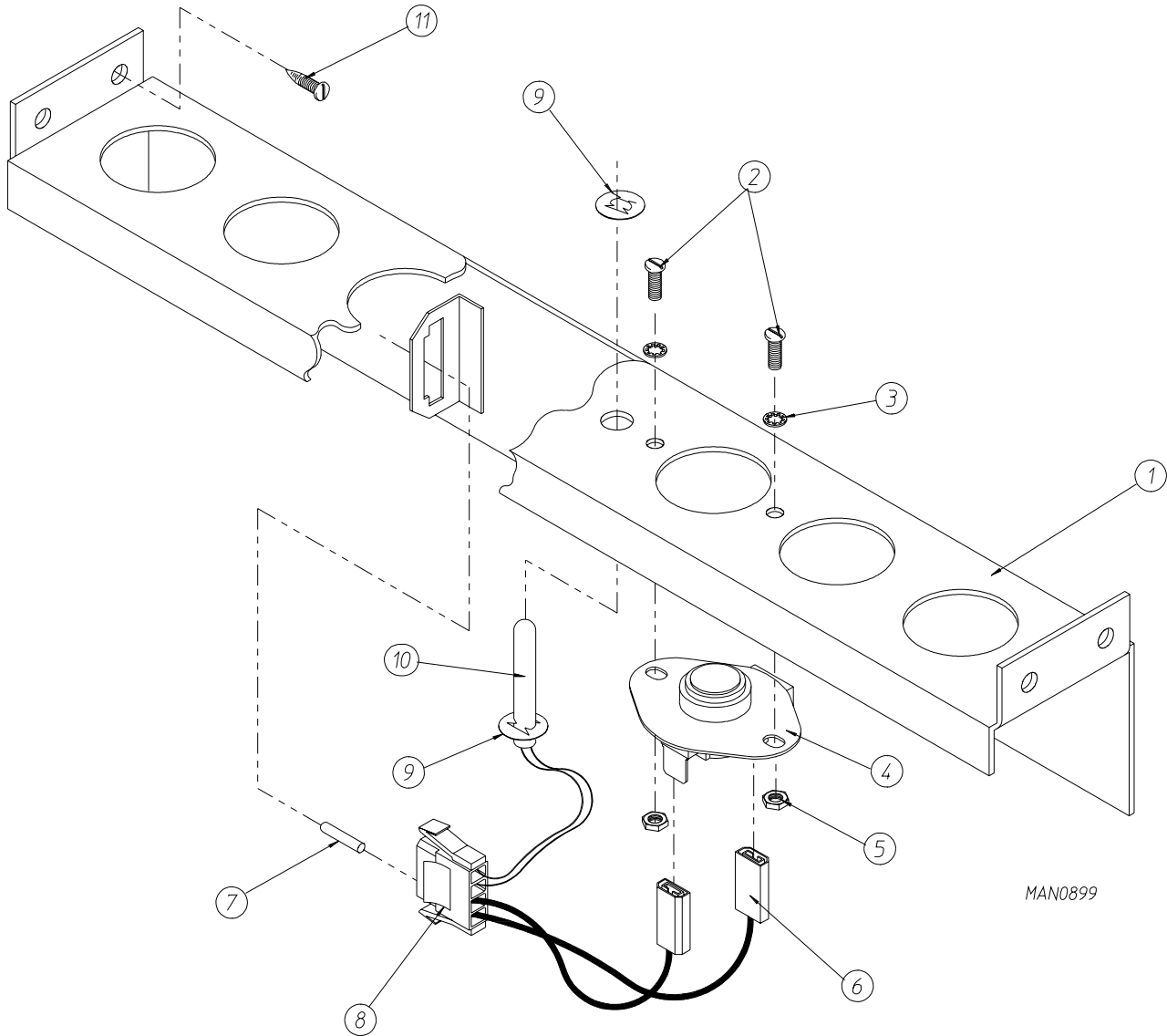


<u>Illus. No.</u>	<u>Part No.</u>	<u>Qty.</u>	<u>Description</u>
1	100612	1	1-1/4" Bore x 15" Diameter x 6" Blower/Fan (squirrel cage)
2	821078	1	Fan Shaft Mount Assembly Complete (includes illus. nos. 1 through 18)
	821073	1	Fan Shaft Mount ONLY
3	117604	5	Neoprene Sponge Tape (sold by the foot) (for models mfd. as of July 13, 1998)
	117600	9	Noise Suppressor Tape (sold by the foot) (for models mfd. prior to July 13, 1998)
4	152006	2	1/2-20 Left Hand Jam Nut
5	153065	1	1/2" Flat Washer
6	332280	1	Fan Shaft ONLY
7	881061	1	1-3/8" Flange Bearing with Setscrews and Grease Fitting
8	153004	4	3/8" Flat Washer
9	153005	4	3/8" Lock Washer
10	152005	4	3/8-16 Hex Nut
11	100812	2	1-3/8" Retaining Ring
12	880879	1	1-3/8" Pillow Block Bearing ONLY
13	153004	2	3/8" Flat Washer
14	153005	2	3/8" Lock Washer
15	150617	2	#3-16 x 1" Hex Head Bolt
16	101177	1	2B x 5.8 Pulley (for gas models Only)
	101135	1	2B x 5.4 Pulley (for steam models Only)
17	100706	1	5/16" x 5/16" x 1-3/8" Key
18	101194	1	SDS x 1-3/8" Bushing ONLY



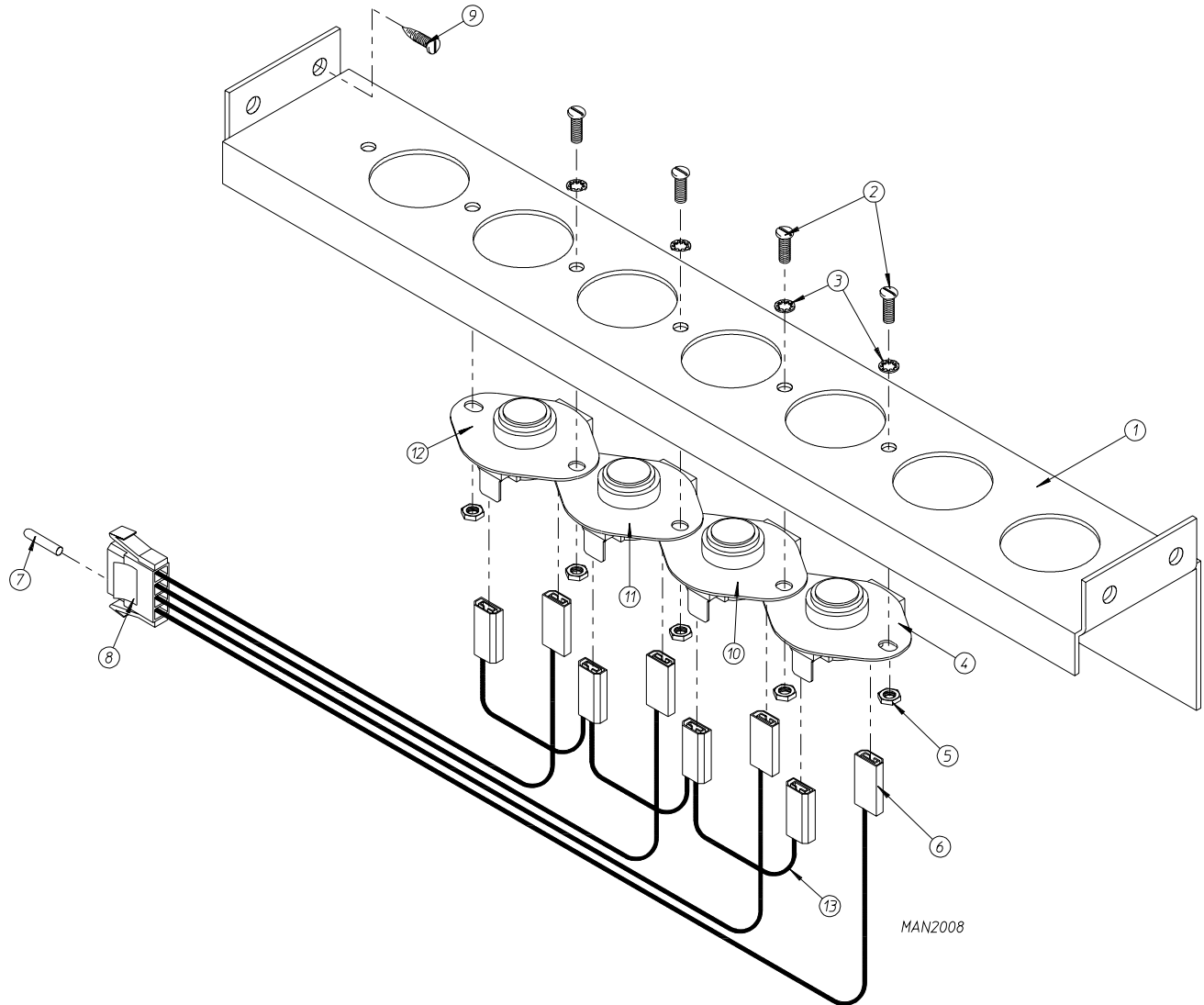
<u>Illus. No.</u>	<u>Part No.</u>	<u>Qty.</u>	<u>Description</u>
1	100046	1	7.5 HP 208-230/460v 3ø Motor (for 60 Hz models Only)
	100092	1	7.5 HP 230/460v 3ø Motor (for 50 Hz models Only)
2	101148	1	SB x 4.0 Motor Pulley (for 60 Hz models Only)
	101147	1	SB x 4.8 Motor Pulley (for 50 Hz models Only)
3	101152	1	SH x 1-3/8" Bushing (for 60 Hz models Only)
	101194	1	SDS x 1-3/8" Bushing (for 50 Hz models Only)
4	100706	1	5/16" x 5/16" x 1-3/8" Key
5	152004	4	5/16-18 Hex Nut
6	153002	4	5/16" Lock Washer
7	153001	4	5/16" Flat Washer
8	821091	1	Motor Mount Adjustment Plate ONLY
9	153001	4	5/16" Flat Washer
10	153002	4	5/16" Lock Washer
11	150501	4	5/16-18 x 3/4" Hex Head Machine Bolt
12	152004	4	5/16-18 Hex Nut
13	150503	2	5/16-18 x 2" Hex Head Machine Bolt
14	332322	1	Motor Mount Adjustment Angle ONLY
15	153001	2	5/16" Flat Washer
16	153002	2	5/16" Lock Washer
17	150501	2	5/16-18 x 3/4" Hex Head Machine Bolt
18*	100128	2	BX-50 Cogged Belt (for 60 Hz models Only)
	100164	2	BX-51 Cogged Belt (for 50 Hz models Only)

* Replace in matched sets (both belts).

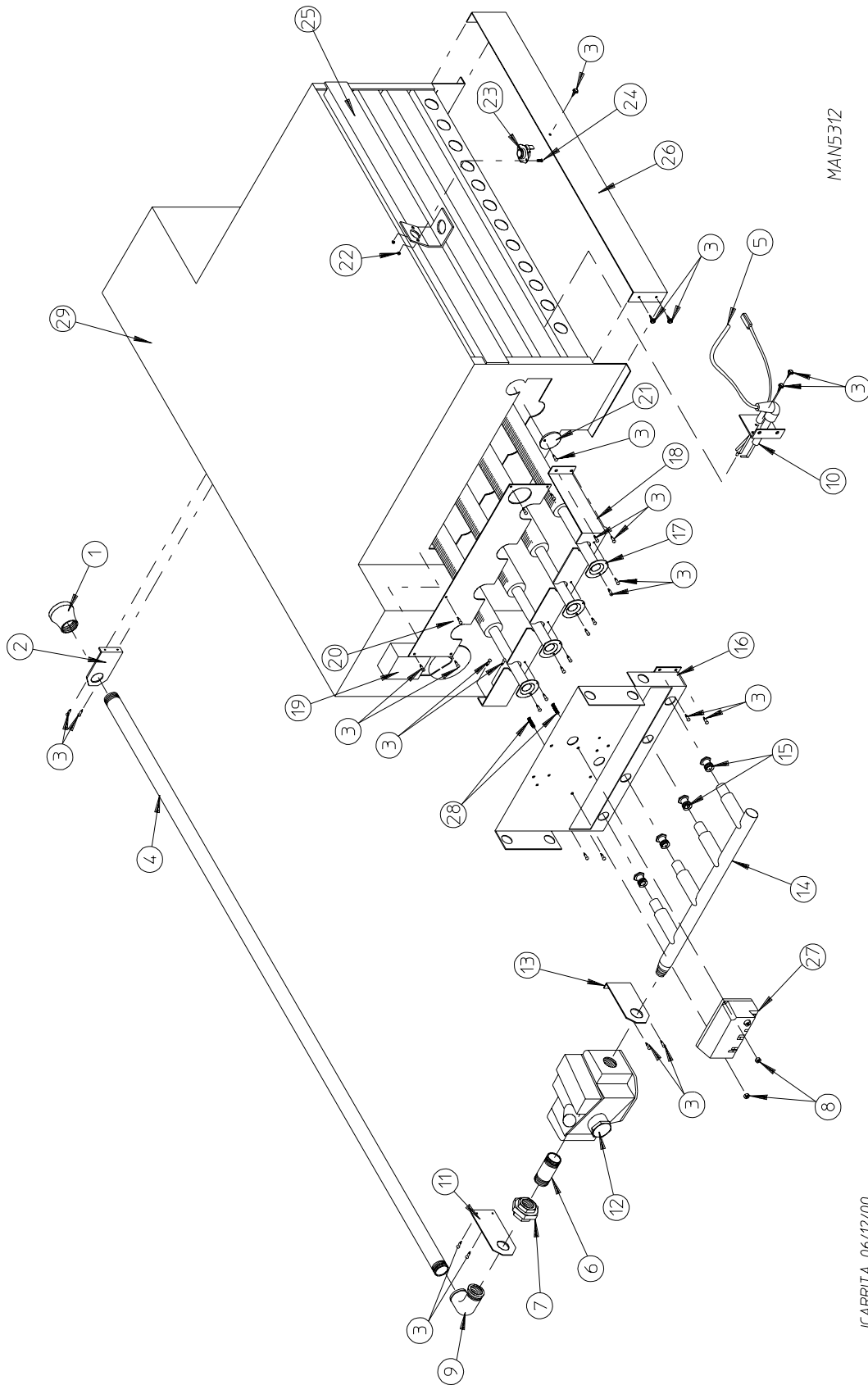


MAN0899

<u>Illus. No.</u>	<u>Part No.</u>	<u>Qty.</u>	<u>Description</u>
1	820968	1	Microprocessor Temperature Sensor Bracket Complete (includes illus. nos. 1 through 10)
	820967	1	Microprocessor Temperature Sensor Bracket ONLY
2	150005	2	#6-32 x 1/4" Round Head Machine Screw
3	153010	2	#6 Star Washer
4	130301	1	225° Manual Reset Thermostat ONLY
5	152000	2	#6-32 Hex Nut
6	121028	2	1/4" x 0.032 Insulated Terminal
7	122701	4	Socket Terminal ONLY
8	122605	1	4-Pin Socket Connector
9	154007	2	1/4" Push On Fastener
10	880251	1	1/4" Temperature Sensor Probe Assembly (includes illus. nos. 6 through 10)
11	150301	4	#8-18 x 7/16" Phillips Pan Head TEK Screw



<u>Illus. No.</u>	<u>Part No.</u>	<u>Qty.</u>	<u>Description</u>
1	821016	1	Timer Temperature Sensor Bracket Complete (includes illus. nos. 1 through 13)
	820999	1	Timer Temperature Sensor Bracket ONLY
2	150005	5	#6-32 x 1/4" Round Head Machine Screw
3	153010	5	#6 Star Washer
4	130101	1	180° Thermostat ONLY
5	152000	2	#6-32 Hex Nut
6	121028	4	1/4" x 0.032 Insulated Terminal
7	122701	4	Socket Terminal ONLY
8	122605	1	4-Pin Socket Connector
9	150301	4	#8-18 x 7/16" Phillips Pan Head TEK Screw
10	130109	1	140° Thermostat ONLY
11	130107	1	160° Thermostat ONLY
12	130103	1	225° Manual Reset Thermostat ONLY
13	831701	1	Sensor Jumper (4) ONLY



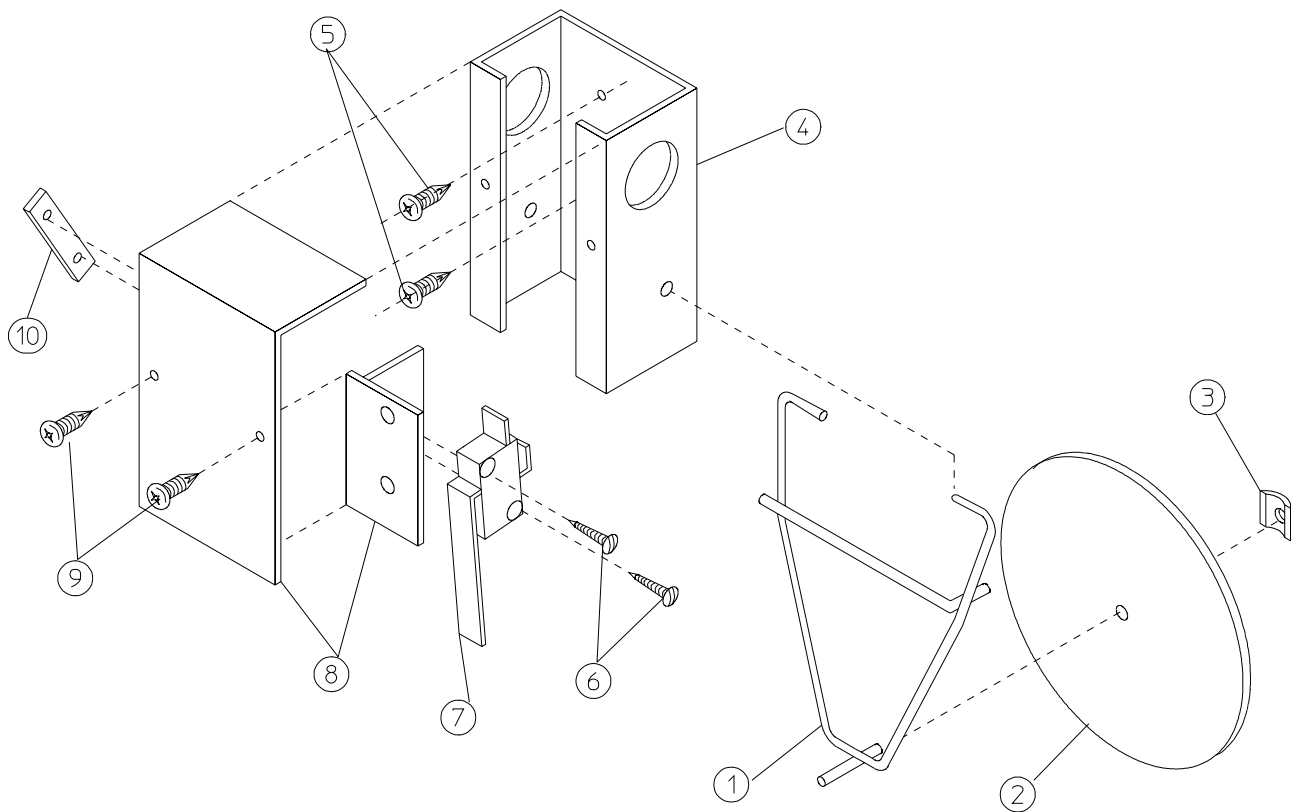
MAN5312

JCARRITA 06/12/00

<u>Illus. No.</u>	<u>Part No.</u>	<u>Qty.</u>	<u>Description</u>
1	142929	1	1-1/2" to 1" Reducing Coupling
2	332117	1	Pipe Bracket
3	150309	33	#10-16 x 1/2" Hex Head TEK Crimptite Screw
4	142583	1	1" x 40" Nipple
5	128919	1*	High Voltage (HV) Ignition Cable with Cap 36"
6	142808	1	1" x 3" Nipple
7	142602	1	1" Union
8	152013	2	#6-32 Hex Nut
9	142507	1	1" x 90° Street Elbow
10	128915	1	Direct Spark Ignition (DSI) Ignitor
11	332487	1	Gas Pipe Bracket Straight Extended
12	140017	1	1" 24 VAC Redundant Gas Valve (natural gas)
	882945	1	1" 24 VAC Gas Valve (liquid propane [L.P.] gas)
13	332486	1	Gas Pipe Bracket Bent Extended
14	141240	1	4-Port Manifold ONLY
15*	140839	4	#2 Burner Orifice (natural gas)
	140820	4	#29 Burner Orifice (liquid propane [L.P.] gas)
16	390169	1	Direct Spark Ignition (DSI) Mount Manifold Rest
17	881492	4	Burner Tube ONLY
18	332121	1	Burner Tube Support ONLY
19	-----	1	Sail Switch (refer to Sail Switch Assembly on page 26)
20	332113	1	Burner Box Cover Plate
21	331290	1	Ignitor/Flame-Probe Sight Hole Disc
22	151000	2	#6-32 Pal Nut
23	130201	1	330° Manual Reset Hi-Limit
24	150005	2	#6-32 x 1/4" Phillips Round Head Machine Screw
25	821457	1	Burner Hi-Limit Bracket
26	332256	1	Large Dryer Liquid Propane (L.P.) Burner Baffle (L.P. models Only)
27	801048	1	Johnson Direct Spark Ignition (DSI) Module (three [3] tries)
28	153562	2	#6-32 x 3/4" Clinch Stud
29	835037**	1	Burner Assembly (natural gas) Complete (less orifice)
	821960**	1	Burner Assembly (liquid propane [L.P.] gas) Complete (less orifice)
	820904	1	Burner Box ONLY
	880978*	1	ML-170 Liquid Propane (L.P.) Conversion Kit

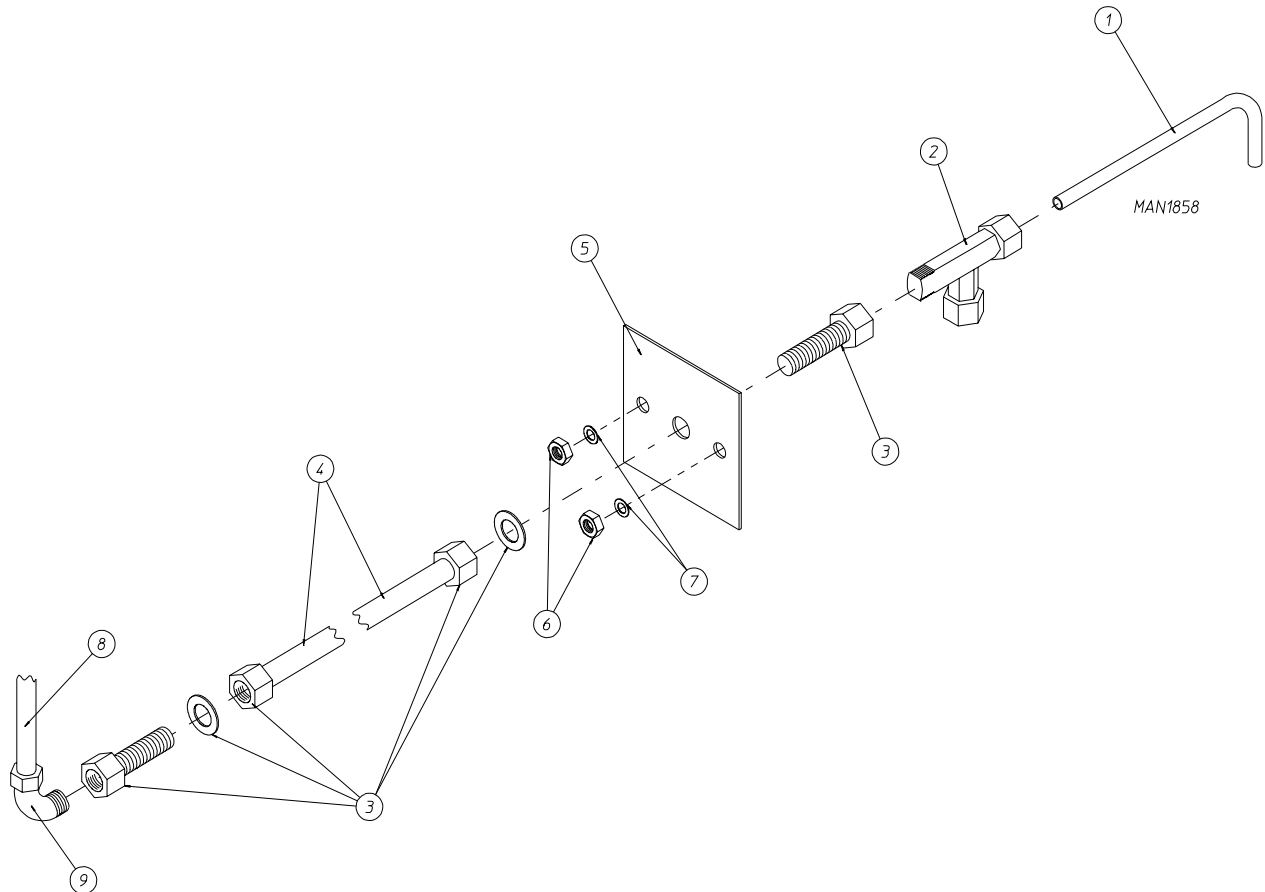
* Consult factory for elevations over 2,000 feet.

** Orifices *are not included* and **must be** ordered separately.

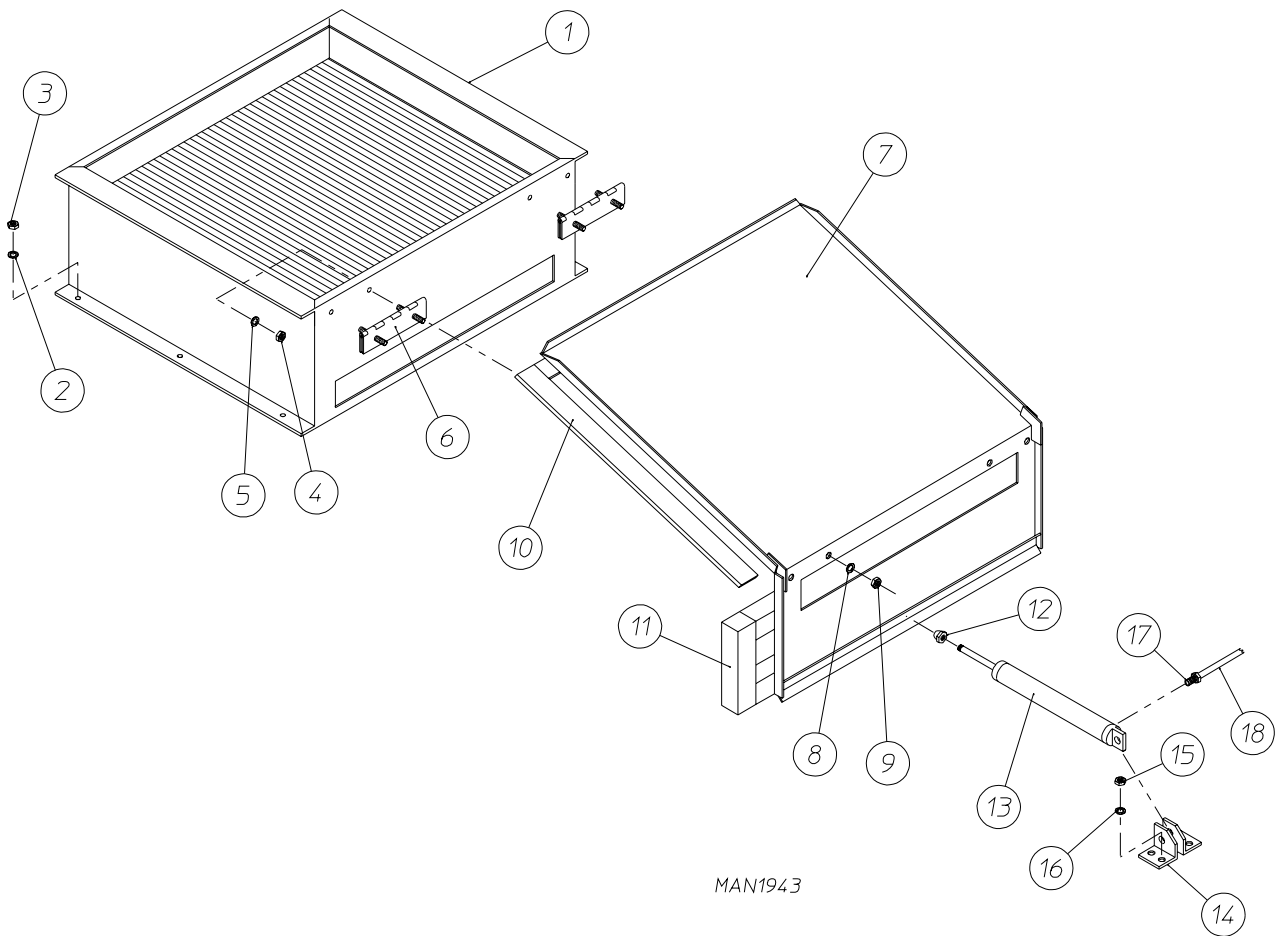


MAN0440

<u>Illus. No.</u>	<u>Part No.</u>	<u>Qty.</u>	<u>Description</u>
1	105500	1	Sail Switch Actuator Rod
2	319202	1	Sail Switch Damper (flat)
3	154002	1	1/8" Push On Fastener
4	802800	1	Sail Switch Box with Cover and Bracket ONLY
	802801	1	Sail Switch Box Assembly Complete (includes illus. nos. 1 through 4 and 6 through 10) For Microprocessor Controller (computer) Models ONLY
	882010	1	Sail Switch Box Assembly Complete (includes illus. nos. 1 through 4 and 6 through 10) For Dual Timer Models ONLY
5	150300	2	#10-16 x 1/2" Hex Washer TEK Screw
6	150303	2	#4 x 3/4" Pan Head "A" Machine Screw
7	122200	1	Sail Switch ONLY (for microprocessor controller [computer] models Only)
	122404	1	Sail Switch ONLY (for dual timer models Only)
8	802799	1	Sail Switch Box Cover and Bracket ONLY
9	150309	2	#10-16 x 1/2" Hex Head TEK Crimpite Screw
10	154004	1	Twin Speed Nut

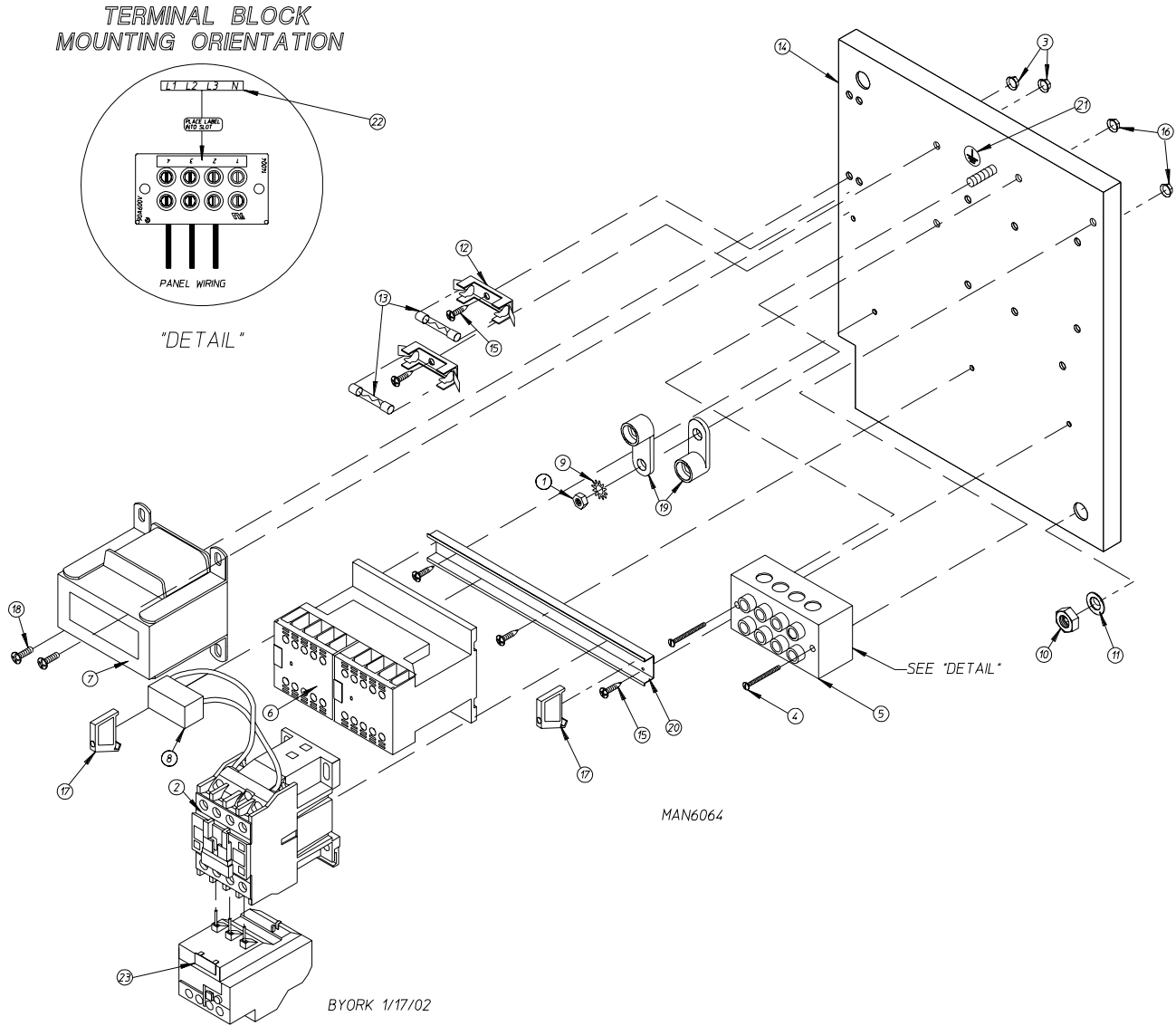


<u>Illus. No.</u>	<u>Part No.</u>	<u>Qty.</u>	<u>Description</u>
1	332700	1	Air Jet Tube ONLY
2	143287	1	1/4" x 1/8" M.P.T. Male Run Tee
3	143259	2	1/4" x 1/8" F.P.T. Bulkhead Fitting
4	143100	3	1/4" Aluminum Tube (sold by the foot)
5	821081	1	Air Jet Mounting Plate ONLY
			(includes illus. nos. 1 through 9)
	332531	1	Air Jet Mounting Plate ONLY
6	152002	2	1/4-20 Hex Nut
7	153007	2	1/4" Lock Washer
8	143110	5	1/4" Poly-Flo Tubing (sold by the foot)
9	143149	1	1/4" x 1/8" M.P.T. 90° Elbow



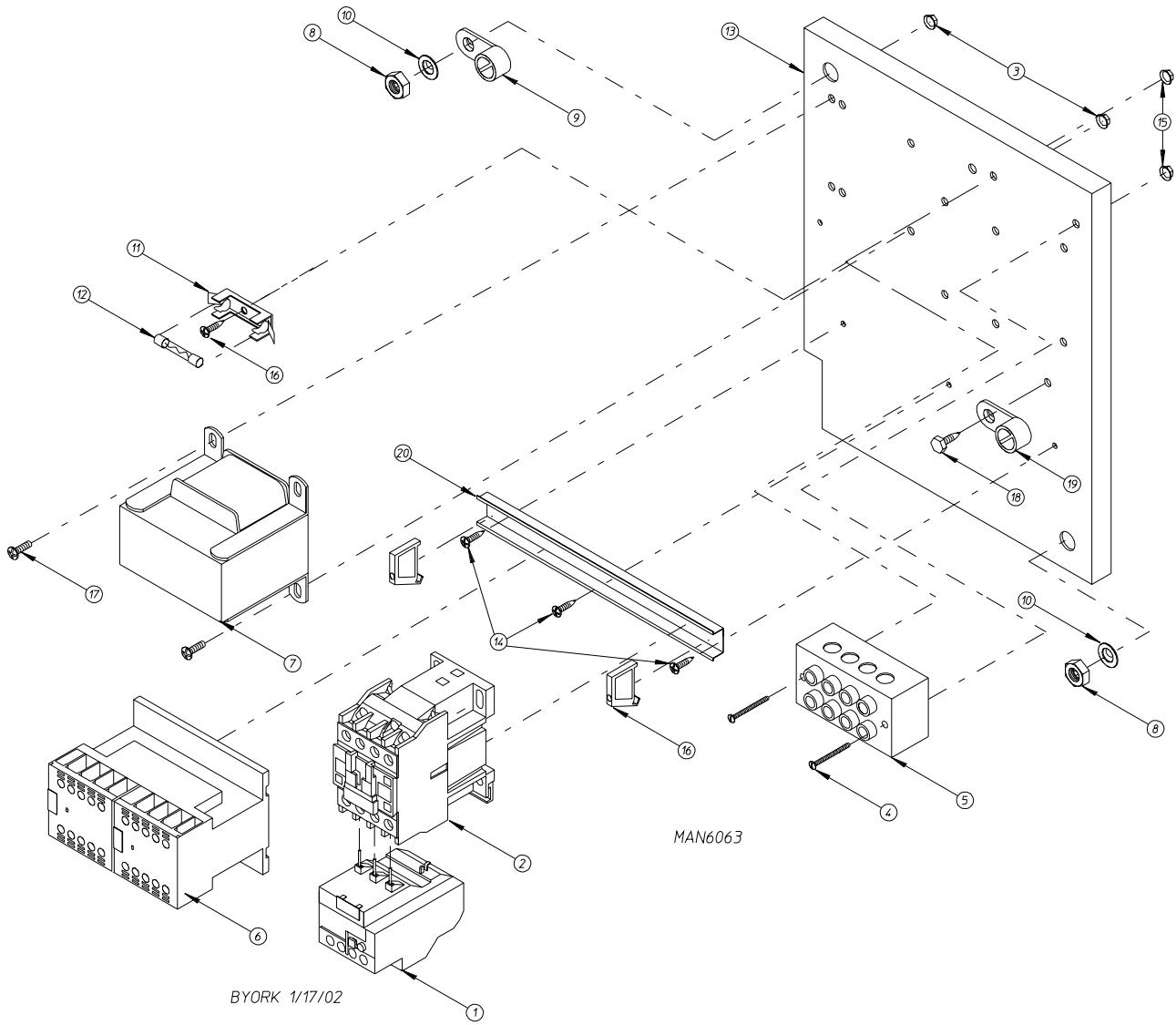
For Steam Models ONLY

<u>Illus. No.</u>	<u>Part No.</u>	<u>Qty.</u>	<u>Description</u>
1	165017	1	Steam Coil ONLY
2	153002	6	5/16" Lock Washer
3	152004	6	5/16-18 Hex Nut
4	152002	4	1/4-20 Hex Nut
5	153007	4	1/4" Lock Washer
6	820321	2	Steam Damper Hinge Assembly
7	820994	1	Steam Damper Assembly (includes illus. nos. 7, 10, and 11)
8	153007	4	1/4" Lock Washer
9	152002	4	1/4-20 Hex Nut
10	115995	96	Steam Damper Gasket (sold by the inch)
11	102350	2	Steam Damper Foam (68-1/2" length)
12	151007	1	7/16-20 Stainless Steel Acorn Nut
13	100499	1	1-1/2" Bore x 3" Stroke Piston
14	100500	1	Piston Support Bracket
15	152002	4	1/4-20 Hex Nut
16	153007	4	1/4" Lock Washer
17	100472	1	1/4" x 1/8" Connector
18	143110	1	1/4" Tubing (sold by the foot) (refer to Top Console Assembly on <u>page 38</u> and <u>page 39</u>)



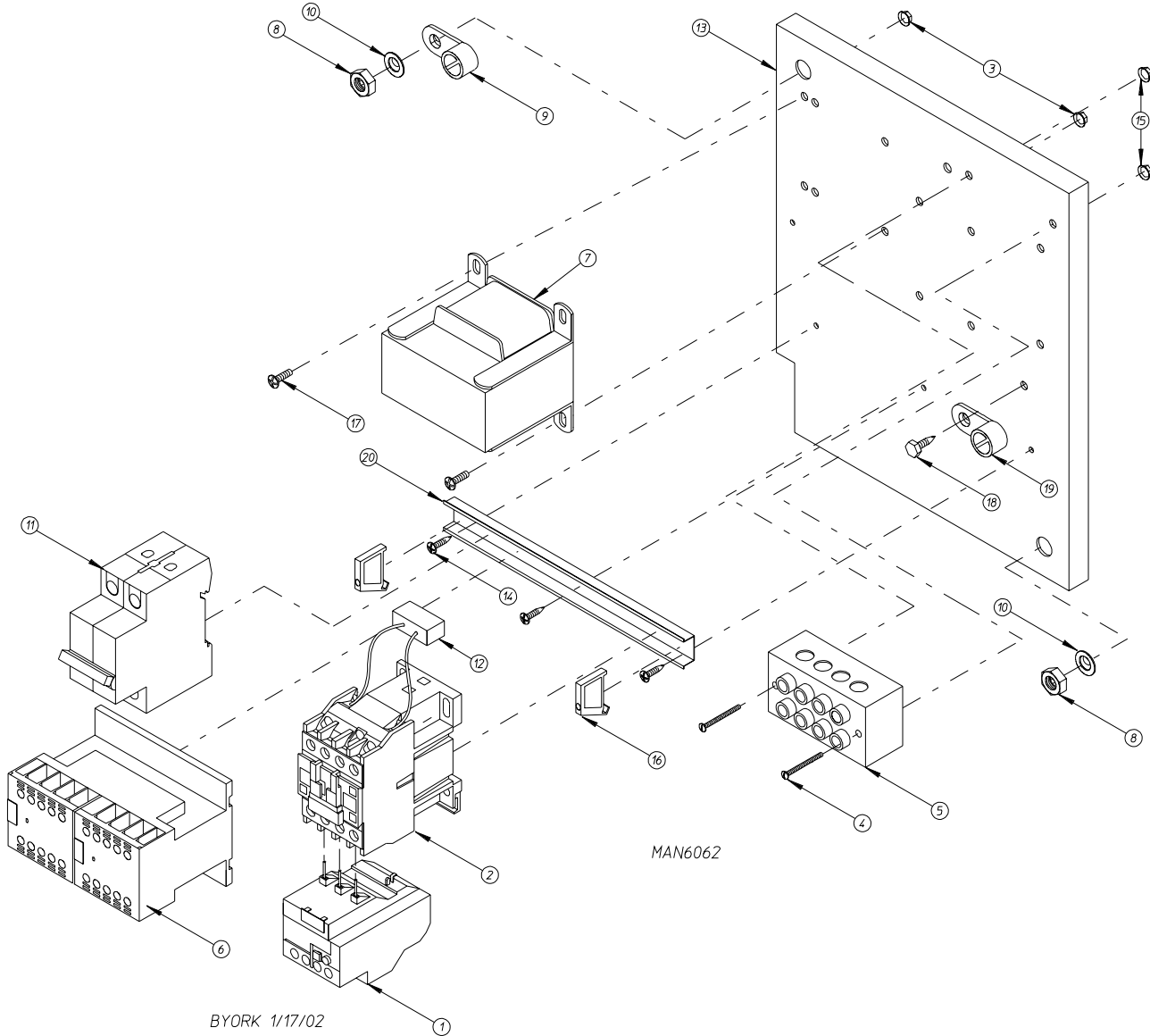
For 208-240V Transformers

<u>Illus. No.</u>	<u>Part No.</u>	<u>Qty.</u>	<u>Description</u>
1	152002	1	1/4-20 Hex Nut
2	132465	1	3 HP Contactor - 24 VAC
3	151001	2	#8-32 Pal Nut
4	150009	2	#6-32 x 1-1/4" Phillips Round Head Machine Screw
5	120701	1	4-Position Power Distribution Block
6	132497	1	Reversing Contactor - 24 VAC
7	822745	1	208-240V Transformer Assembly
8	137015	1	Arc Suppressor Board (A.S.)
9	153021	1	1/4" Ext/Int Shake Proof Washer
10	152004	1	5/16-18 Hex Nut
11	153002	1	5/16" Lock Washer
12	136008	2	Fuse Block/Holder
13	136057	2	1/2-Amp (slo blo) Fuse
14	332346	1	Contactor/Relay Mounting Panel ONLY
15	150301	5	#8-18 x 7/16" Phillips Pan Head TEK Screw
16	151000	2	#6-32 Pal Nut
17	120765	2	End Stop/Bracket
18	150108	2	#8-32 x 1/2" Pan Head Machine Screw
19	121010	1	L-70 Ground Lug
20	120768	7-3/4"	Din Mounting Rail (sold by the inch)
21	112075	1	Ground Label
22	112068	1	3-Phase (3ø) Power Input Label
23	132439	1	Overload
--	825267	1	Contactor Wiring...Not Illustrated
--	829053	1	Relay Panel Wiring...Not Illustrated



For 380-416V Transformers

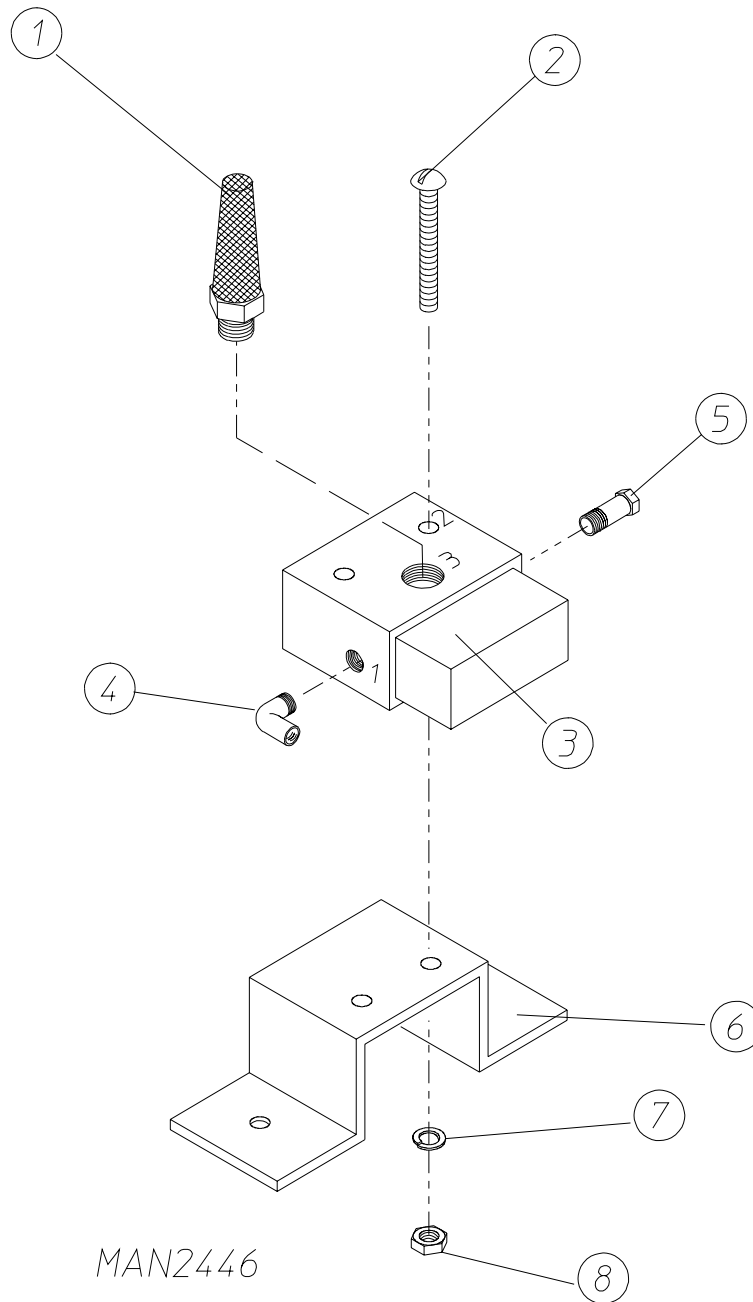
<u>Illus. No.</u>	<u>Part No.</u>	<u>Qty.</u>	<u>Description</u>
1	132467	1	9-13-Amp Overload
2	132465	1	10 HP Contactor - 24 VAC
3	151001	2	#8-32 Pal Nut
4	150009	2	#6-32 x 1-1/2" Phillips Round Head Machine Screw
5	120701	1	4-Position Power Distribution Block
6	132497	1	"Kline" Reversing Contactor
7	801580	1	Transformer (380-416 volt/3 ϕ)
8	152004	2	5/16-18 Hex Nut
9	121012	1	Ground Lug
10	153002	2	5/16" Lock Washer
11	136008	1	Fuse Block/Holder
12	136057	1	1/2-Amp (slo blo) Fuse
13	332346	1	Contactor/Relay Mounting Panel ONLY
14	150301	4	#8-18 x 7/16" Phillips Pan Head TEK Screw
15	151000	2	#6-32 Pal Nut
16	120765	2	End Stop/Bracket
17	150108	2	#8-32 x 1/2" Pan Head Machine Screw
18	150297	1	#10 x 1/2" Hex Washer TEK Screw
19	121010	1	L-70 Ground Lug
20	120768	7-3/4"	Din Mounting Rail (sold by the inch)
--	830180	1	Relay Panel Wiring...Not Illustrated
--	825267	1	Drive/Blower Motor Contactor Wiring...Not Illustrated



For 460-480V Transformers

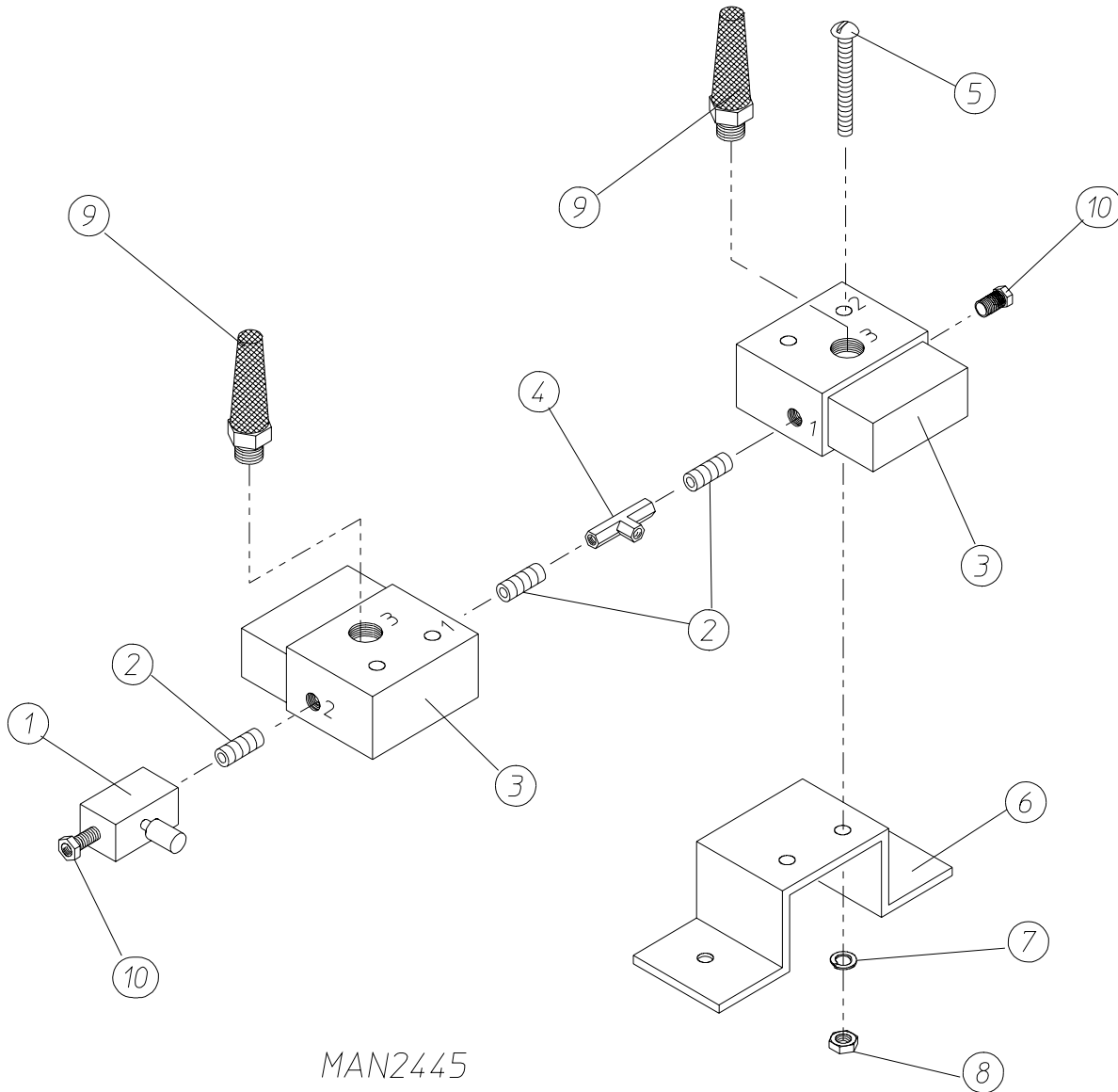
<u>Illus. No.</u>	<u>Part No.</u>	<u>Qty.</u>	<u>Description</u>
1	132467	1	9-13-Amp Overload
2	132465	1	10 HP Contactor-24 VAC
3	151001	2	#8-32 Pal Nut
4	150009	2	#6-32 x 1-1/2" Phillips Round Head Machine Screw
5	120701	1	4-Position Terminal Block
6	132497	1	"Kline" Reversing Contactor
7	830193	1	460-480V Transformer Assembly
8	152004	2	5/16-18 Hex Nut
9	121012	1	Ground Lug
10	153002	2	5/16" Lock Washer
11	135501	1	2-Pole-1-Amp Circuit Breaker
12	137015	1	Arc Suppressor (A.S.)
13	332346	1	Relay Panel
14	150301	4	#8-18 x 7/16" Phillips Pan Head TEK Screw
15	151000	2	#6-32 Pal Nut
16	120765	2	End Stop/Bracket
17	150108	2	#8-32 x 1/2" Pan Head Machine Screw
18	150297	1	#10 x 1/2" Hex Washer TEK Screw
19	121010	1	L-70 Ground Lug
20	120768	7-3/4"	Din Mounting Rail (sold by the inch)
--	830192	1	Relay Panel Wiring...Not Illustrated
--	825267	1	Drive/Blower Motor Contactor Wiring...Not Illustrated

For Gas Models ONLY



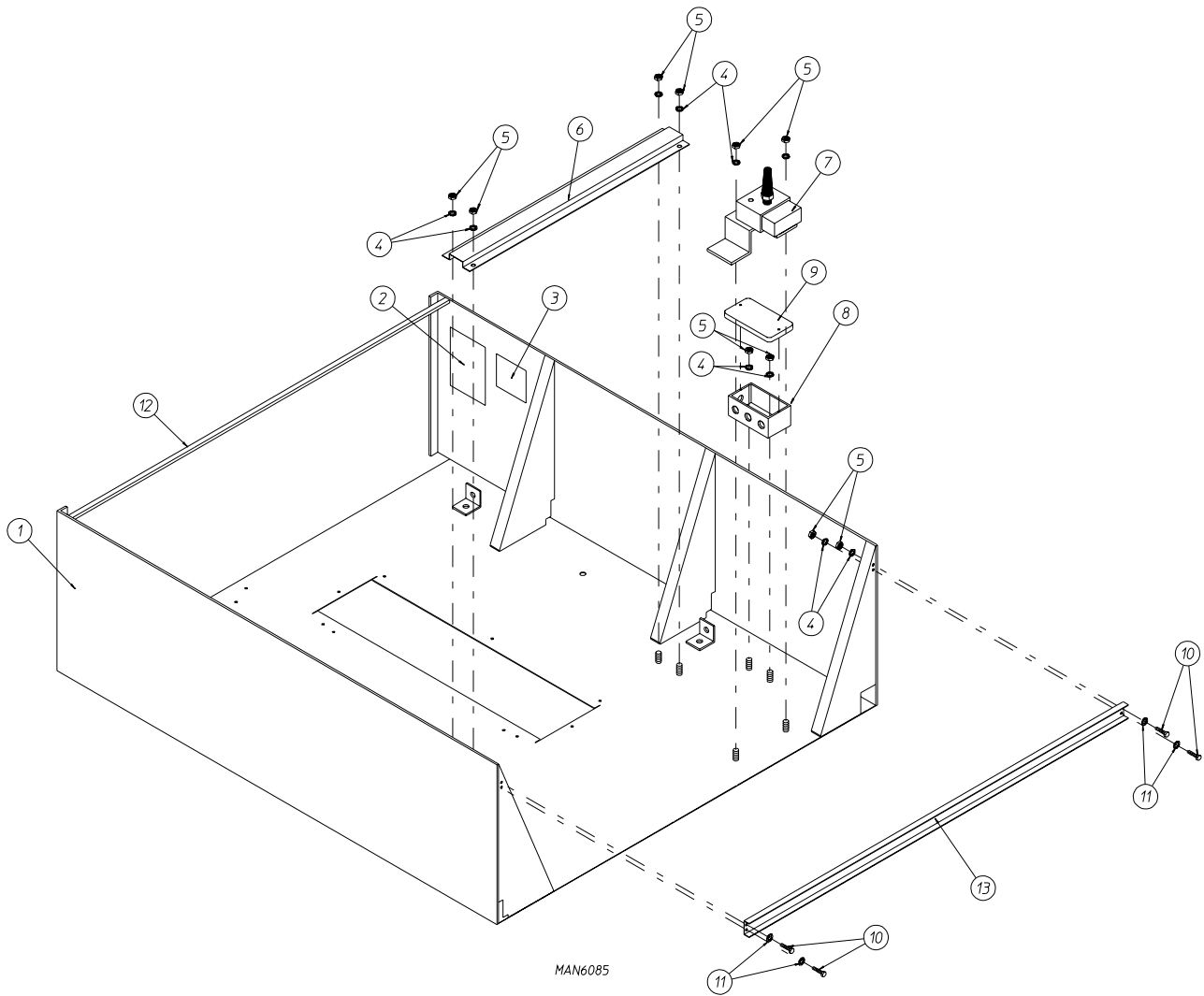
<u>Illus. No.</u>	<u>Part No.</u>	<u>Qty.</u>	<u>Description</u>
1	100520	1	1/8" N.P.T. Silencer (muffler) ONLY
2	150002	1	#6-32 x 1" Slotted Machine Screw
3	100498	1	3-Way Micro Valve ONLY - 24 VAC
	821105	1	Pneumatic Valve Assembly Complete (includes illus. nos. 1 through 8)
4	143268	1	1/8" Street Elbow
5	100472	1	1/4" x 1/8" Connector
6	330987	1	Micro Valve Support Bracket ONLY
7	153010	1	#6 Star Washer
8	152000	1	#6-32 Hex Nut

For Steam Models ONLY



MAN2445

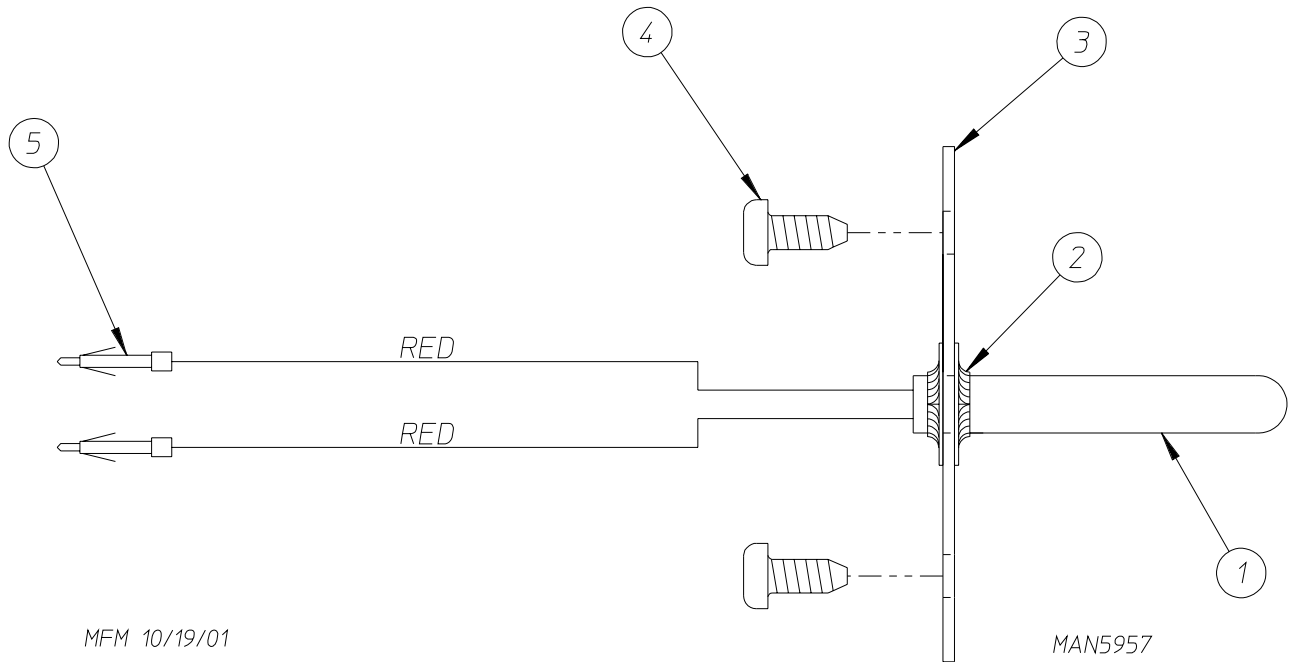
<u>Illus. No.</u>	<u>Part No.</u>	<u>Qty.</u>	<u>Description</u>
1	100496	1	1/8" Needle Valve
2	143238	3	1/8" Close Nipple
3	100498	2	3-Way Micro Valve ONLY - 24 VAC
	821104	1	Pneumatic Valve Assembly Complete (includes illus. nos. 1 through 8)
4	143223	1	1/8" F.P.T. Brass Tee
5	150002	2	#6-32 x 1" Slotted Machine Screw
6	330987	1	Micro Valve Support Bracket ONLY
7	153010	2	#6 Star Washer
8	152000	2	#6-32 Hex Nut
9	100520	2	1/8" N.P.T. Silencer (muffler) ONLY
10	100472	2	1/4" x 1/8" Connector



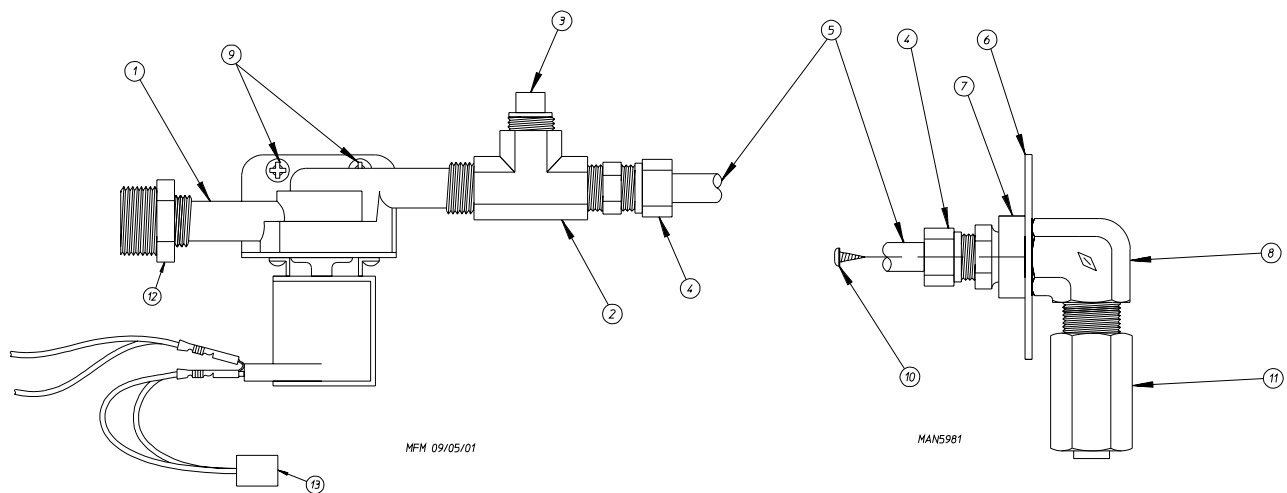
BYORK 2/13/02

<u>Illus. No.</u>	<u>Part No.</u>	<u>Qty.</u>	<u>Description</u>
1	821085*	1	Top Console Assembly ONLY (for gas models Only)
	821086*	1	Top Console Assembly ONLY (for steam models Only)
2	112284	1	“Phase 6 OPL Program Location Summary” Label (for microprocessor models Only)
3	-----	1	Dryer Data Label (not for resale by ADC)
4	153007	12	1/4” Lock Washer
5	152002	12	1/4-20 Hex Nut
6	332323	1	32” Wire Channel
7	821105	1	Pneumatic Valve Assembly ONLY (for gas models Only) Refer to Pneumatic Valve Assembly on page 36
	821104	1	Pneumatic Valve Assembly ONLY (for steam models Only) Refer to Pneumatic Valve Assembly on page 37
8	121104	1	2” x 4” Junction Box ONLY
9	121105	1	Junction Box Cover ONLY
10	150615	1	1/4-20 x 3/4” Bolt
11	153018	4	1/4” Flat Washer
12	332186	1	Control Door Hinge Channel
13	332132	1	Corner Gusset Brace

* Specify color when ordering.

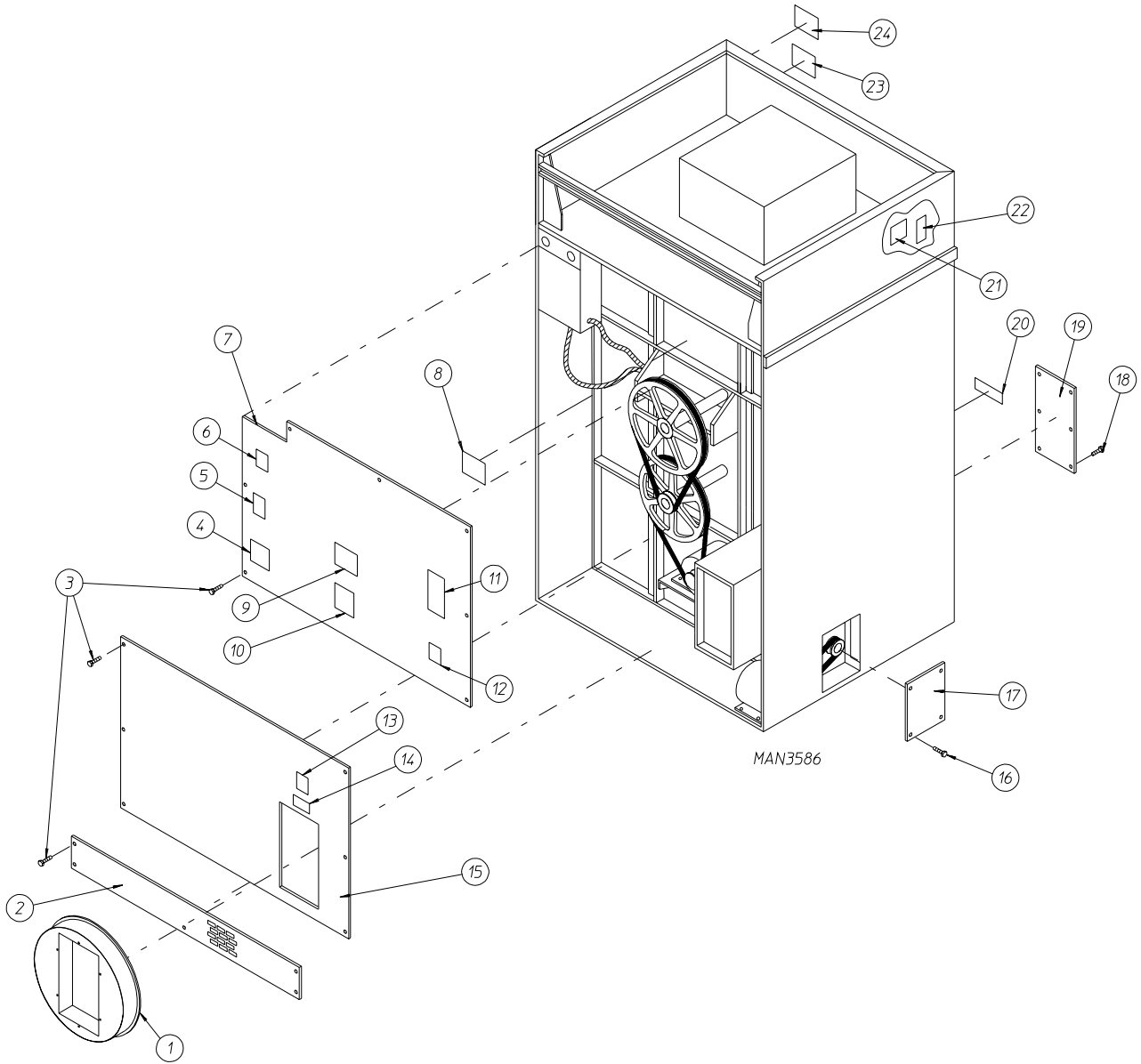


<u>Illus. No.</u>	<u>Part No.</u>	<u>Qty.</u>	<u>Description</u>
1	822752	1	Fire Suppression System (F.S.S.) Temperature Probe Assembly (includes illus. nos. 1 through 5)
2	154007	2	Push On Fastener
3	390390	1	Sensor Bracket (Only)
4	150301	2	#8-18 Phillips Pan Head TEK Screw
5	122647	1	Connector ONLY...Not Illustrated (<u>does not</u> include pins)
	122700	2	Pins



<u>Illus. No.</u>	<u>Part No.</u>	<u>Qty.</u>	<u>Description</u>
1	165114	1	Fire Suppression System (F.S.S.) Solenoid Valve 24V 50/60 Hz
2	143220	1	3/8" F.P.T. Brass Tee
3	143251	1	3/8" M.P.T. Brass Plug
4	143208	2	3/8" Comp x 3/8" M.P.T. Brass Connector
5	143099*	6'	3/8" OD x 0.035 Wall Copper Tubing
6	311588	1	Sprinkler Head Mounting Plate
7	143303	1	3/8" N.P.T. Brass Locknut
8	143155	1	3/8" Brass Elbow 90°
9	150430	2	#10 x 1/2" Self Drilling Screw
10	150301	2	#8-18 x 7/16" TEK Screw
11	143581	1	3 GPM 3/8" F.P.T. Spray Nozzle
12	142888	1	1/2" to 3/8" Bushing for Fire Suppression System (F.S.S.) Valve
13	824828	1	Arc Suppressor

* Sold by the foot.



<u>Illus. No.</u>	<u>Part No.</u>	<u>Qty.</u>	<u>Description</u>
1	821092	1	Square Duct to 18" Round Duct Transition Piece Assembly (for gas models Only)
	821720	1	Square Duct to 18" Round Duct Transition Piece with Optional Damper (for gas models Only)
	821956	1	20" Exhaust Transition Piece Assembly (for steam models Only)
	821793	1	Square Duct to 20" Round Duct Transition Piece with Optional Damper (for steam models Only)
	117505	*	Aluminum Duct Tape (sold by the foot)
2	332328	1	Bottom Back Guard ONLY
3	150301	17	#8-18 x 7/16" Phillips Pan Head TEK Screw
4	112046	1	" IMPORTANT For Computer Ground" Label
5	112014	1	" HIGH VOLTAGE " Label
6	114007	1	" DANGER - High Voltage" Label
7	821095	1	Top Back Guard ONLY
8	112029	1	"Reversing Tumbler Drive" Label
9	112519	1	"Routine Maintenance Schedule" Label
10	114004	1	" CAUTION - Rotating Parts" Label
11	112230	1	"Installation Instructions" Label
12	112017	1	ADC Name, Address, Telephone Number Label
13	114008	1	" WARNING - Fumes" Label
14	114001	1	" CAUTION - Exhaust/Lint Screen" Label
15	821096	1	Middle Back Guard ONLY
16	150301	4	#8-18 x 7/16" Phillips Pan Head TEK Screw
17**	332309	1	Side Access Panel
18	150301	6	#8-18 x 7/16" Phillips Pan Head TEK Screw
19**	332295	1	Blower Housing Front Access Panel
20	112280	1	"Clean Lint Screen" Label
21	-----	1	Dryer Data Label (not for resale by ADC)
22	114521	1	"Phase 7 OPL Program Location Summary" Label (for microprocessor models Only)
23	114006	1	" WARNING - Fire Hazards" Label
24	114051	1	Phase 6 Computer "A and B Factor" Label

* As required.

** Specify color when ordering.

<u>Part No.</u>	<u>Description</u>
120102	3/8" Straight (BX) Connector
120111	1/2" Liquidtite 45° Connector
120400	3/8" Red Jacket (BX) Insulator
120500	3/8" Jiffy Clip (BX retainer clip)
120600	3/8" Greenfield (BX)
120800	1/4" In-Line Connector
120802	Red Butt Connector
120902	#74B Wire Nut
120903	Crimp-On Wire Nut
120904	Red Wire Nut
121014	1/4" Insulated (female) Terminal
121499	5-1/2" Harness Tie
121500	8" Harness Tie
122804	Manometer (water column test gauge)
404500	Almond Brush-In-Cap Bottle Touch-Up Paint
404502	White Brush-In-Cap Bottle Touch-Up Paint
404506	Beige Brush-In-Cap Bottle Touch-Up Paint
404507	Cornflower Blue Brush-In-Cap Bottle Touch-Up Paint
880200	Electrical Terminal (assortment) Kit

