

ML-175

Parts Manual

Phase 7

American Dryer Corporation
88 Currant Road
Fall River, MA 02720-4781
Telephone: (508) 678-9000 / Fax: (508) 678-9447
E-mail: techsupport@amdry.com

www.amdry.com

Retain This Manual In A Safe Place For Future Reference

American Dryer Corporation products embody advanced concepts in engineering, design, and safety. If this product is properly maintained, it will provide many years of safe, efficient, and trouble free operation.

ONLY qualified technicians should service this equipment.

OBSERVE ALL SAFETY PRECAUTIONS displayed on the equipment or specified in the installation manual included with the dryer.

The following “**FOR YOUR SAFETY**” caution must be posted near the dryer in a prominent location.

FOR YOUR SAFETY

Do not store or use gasoline or other flammable vapors and liquids in the vicinity of this or any other appliance.

POUR VOTRE SÉCURITÉ

Ne pas entreposer ni utiliser d'essence ni d'autres vapeurs ou liquides inflammables à proximité de cet appareil ou de tout autre appareil.

We have tried to make this manual as complete as possible and hope you will find it useful. ADC reserves the right to make changes from time to time, without notice or obligation, in prices, specifications, colors, and material, and to change or discontinue models.

Important

For your convenience, log the following information:

DATE OF PURCHASE _____ MODEL NO. **ML-175**
RESELLER'S NAME _____
Serial Number(s) _____

Replacement parts can be obtained from your reseller or the ADC factory. When ordering replacement parts from the factory, you can FAX your order to ADC at (508) 678-9447 or telephone your order directly to the ADC Parts Department at (508) 678-9000. Please specify the dryer model number and serial number in addition to the description and part number, so that your order is processed accurately and promptly.

The illustrations on the following pages may not depict your particular dryer exactly. The illustrations are a composite of the various dryer models. Be sure to check the descriptions of the parts thoroughly before ordering.

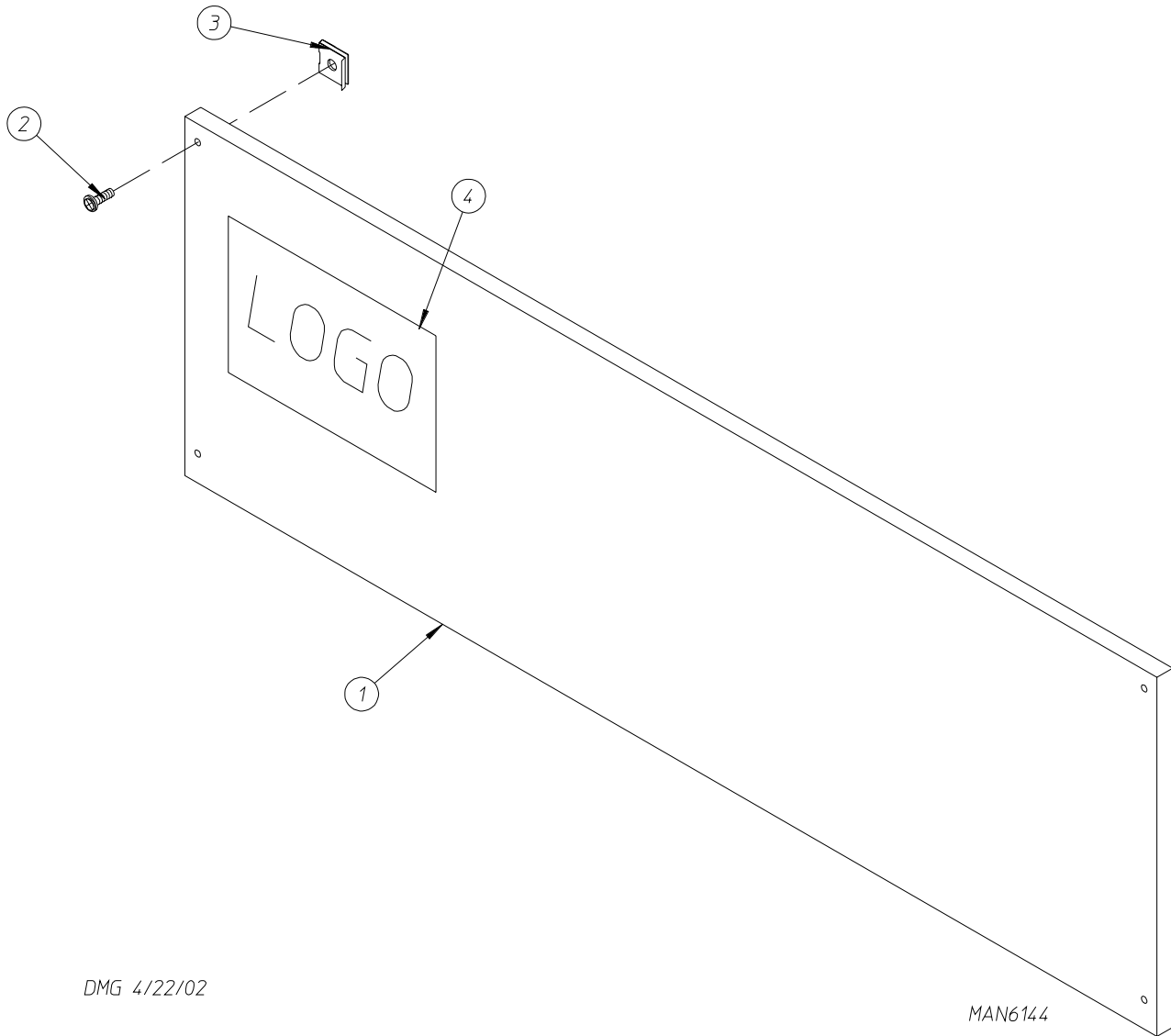
“IMPORTANT NOTE TO PURCHASER”

Information must be obtained from your local gas supplier on the instructions to be followed if the user smells gas. These instructions must be posted in a prominent location near the dryer.

Table of Contents

Control Door Assembly	4
Phase 7 Non-Coin Microprocessor Control Panel Assembly	5
Main Door Assembly for Models Mfd. as of September 10, 2005	6
Front Panel for Models Mfd. as of September 10, 2005	7
Front Panel / Main Door Assemblies for Models Mfd. prior to September 10, 2005	8
Main Door Switch Assembly	10
Tumbler Assembly	11
Rotational Sensor / Rear Support Wheels	12
Lint Door Assembly	13
Lint Drawer / Lint Drawer Switch Box Assemblies for Models Mfd. as of February 22, 2003, Which Have Individual Lint Screen and Drawer	14
Lint Drawer / Lint Drawer Switch Box Assemblies for Models Mfd. prior to February 22, 2003	15
Fan (Squirrel Cage) Shaft Mount Assembly	16
Blower Motor Mount Assembly	18
Microprocessor Temperature Sensor Bracket Assembly	19
Drive Shaft Assembly	20
Idler Shaft Assembly	21
Speed Reducer Shaft Assembly	22
Totally Enclosed, Non-Venting Drive Motor Assembly	23
Direct Spark Ignition Burner Assembly	24
Sail Switch Assembly	26
Air Jet Assembly	27
Reversing Relay Panel Assembly for 208-240 Volts for Models Mfd. as of January 25, 2006	28
Reversing Relay Panel Assembly for 380-416 Volts for Models Mfd. as of January 26, 2006	30
Reversing Relay Panel Assembly for 460-480 Volts for Models Mfd. as of February 1, 2006	32
Microprocessor Reversing Contactor Mounting Panel Assembly for 208-240 Volt Transformers for Models Mfd. between August 29, 2002 and January 24, 2006	34
Microprocessor Reversing Contactor Mounting Panel Assembly for 208-240 Volt Transformers for Models Mfd. prior to August 29, 2002	36
Microprocessor Reversing Contactor Mounting Panel Assembly for 380-416 Volt Transformers for Models Mfd. prior to August 29, 2002	38
Microprocessor Reversing Contactor Mounting Panel Assembly for 460-480 Volt Transformers for Models Mfd. prior to August 29, 2002	40
Steam Damper Assembly for Steam Models ONLY	42
Pneumatic Valve Assembly for Gas Models ONLY	43
Pneumatic Valve Assembly for Steam Models ONLY	44
Top Console Assembly	45
Fire Suppression System Temperature Probe Assembly	46
Fire Suppression System Solenoid Assembly for Models Mfd. as of September 23, 2004	47
Fire Suppression System Solenoid Assembly for Models Mfd. prior to September 23, 2004	48
Back Guard Assemblies	49

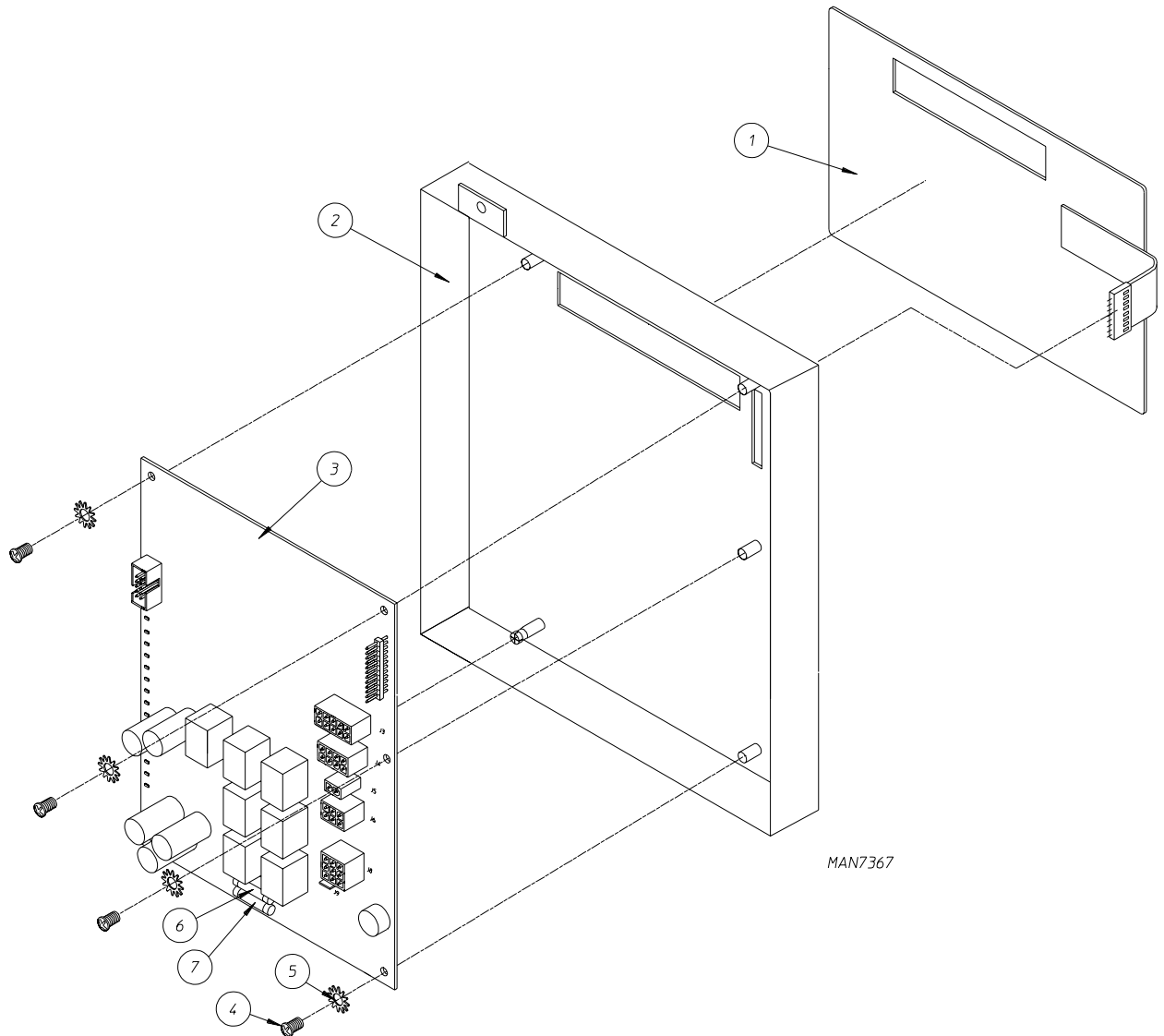
Control Door Assembly



<u>Illus. No.</u>	<u>Part No.</u>	<u>Qty.</u>	<u>Description</u>
1*	883256	1	Phase 7 Control Door (gas)
	883322	1	Phase 7 Control Door (steam)
2	150321	4	#10-32 x 1/2" Phillips Screw
3	154011	4	#10-32 Multi-Thread U-Nut
4	112373	1	Logo

* Specify color when ordering.

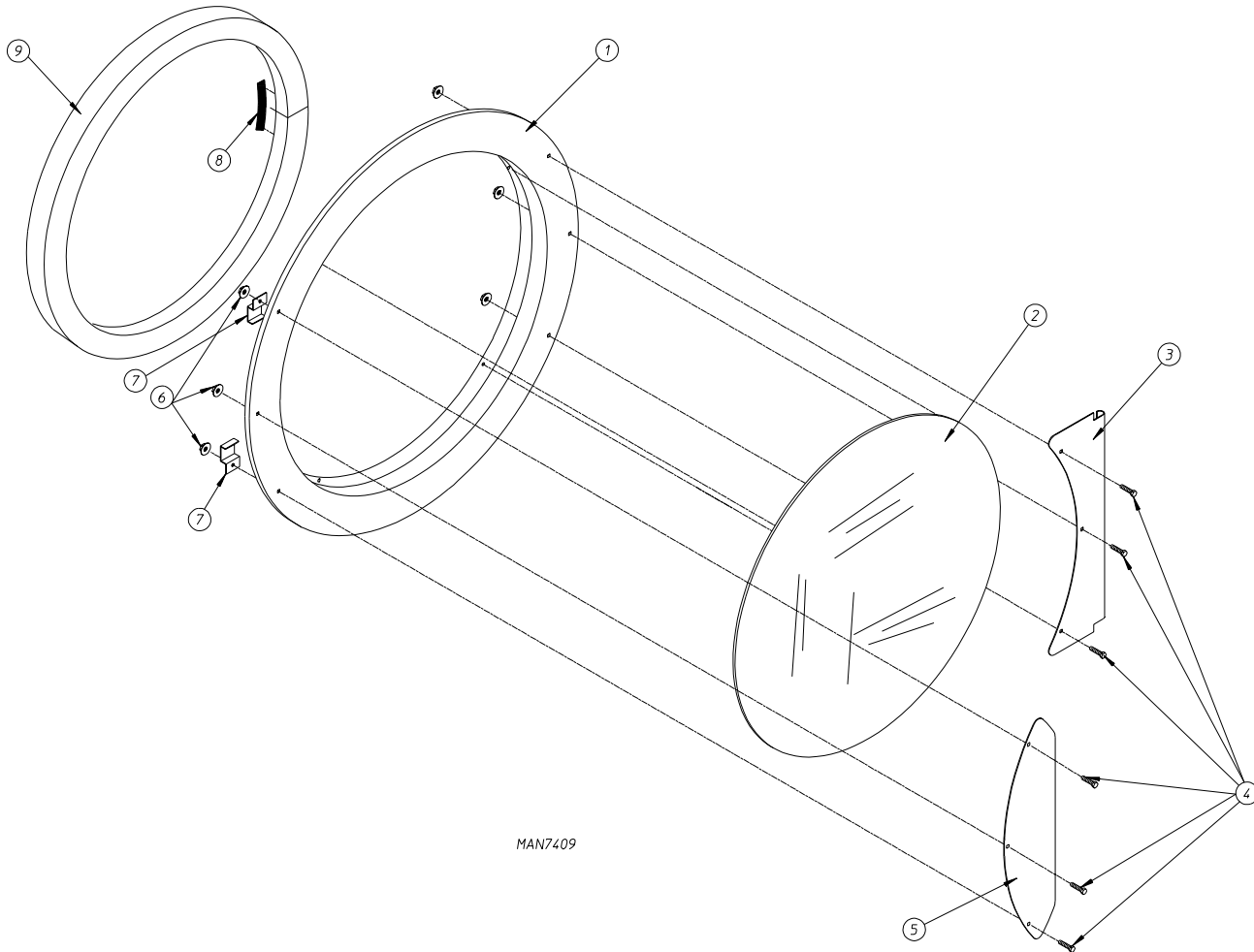
Phase 7 Non-Coin Microprocessor Control Panel Assembly



<u>Illus. No.</u>	<u>Part No.</u>	<u>Qty.</u>	<u>Description</u>
1	112577	1	Phase 7 Non-Coin Keypad
2	850980	1	Phase 7 Microprocessor Controller (computer) Panel
3	887004	1	Phase 7 Microprocessor Controller (computer) (for models mfd. as of December 3, 2003)
	887001	1	Phase 7 Microprocessor Controller (computer) (for models mfd. prior to December 3, 2003)
	887024	1	Phase 7 Microprocessor Controller (computer) for Models Mfd. without F.S.S.
4	150005	4	#6-32 x 3/4" Phillips Round Head Machine Screw
5	153010	4	#6 Star Washer
6	136016	1	5-Amp Fuse
7	136097	1	1/2-Amp Fuse

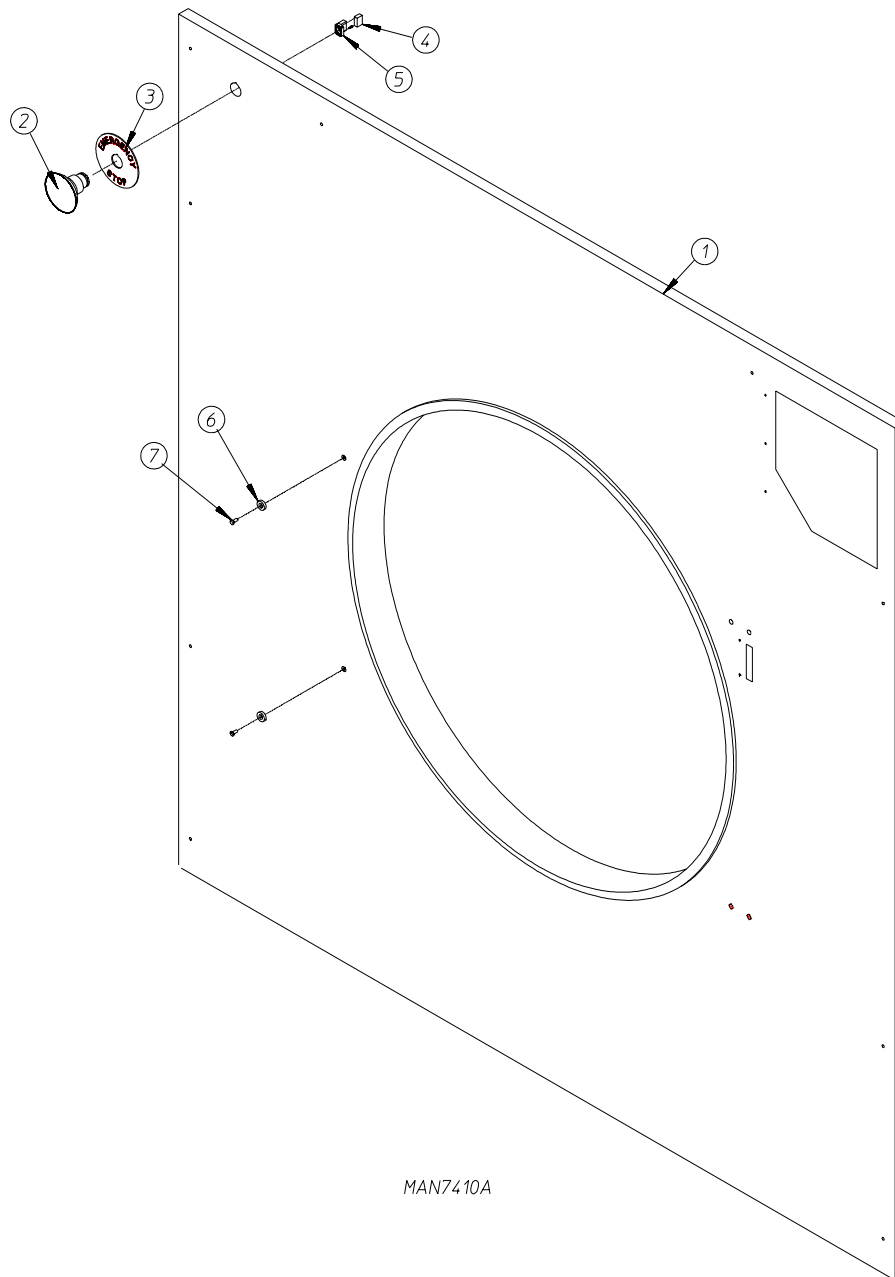
Main Door Assembly

For Models Mfd. as of September 10, 2005



<u>Illus. No.</u>	<u>Part No.</u>	<u>Qty.</u>	<u>Description</u>
1	801600	1	37-1/4" Round Door
2	102221	1	30" Door Glass
3	835128	1	Large Main Door Hinge
4	150683	6	1/4-20 x 5/8" Black Carriage Bolt
5	884367	1	Large Main Door Handle
6	152014	6	1/4-20 Free Spin Wash Nut
7	185522	2	37-1/4" Main Door Magnet Bracket
8	110006	2	1/2" Black Strapping Tape
9	102357	1	Extruded Steel Door Gasket

For Models Mfd. as of September 10, 2005



MAN7410A

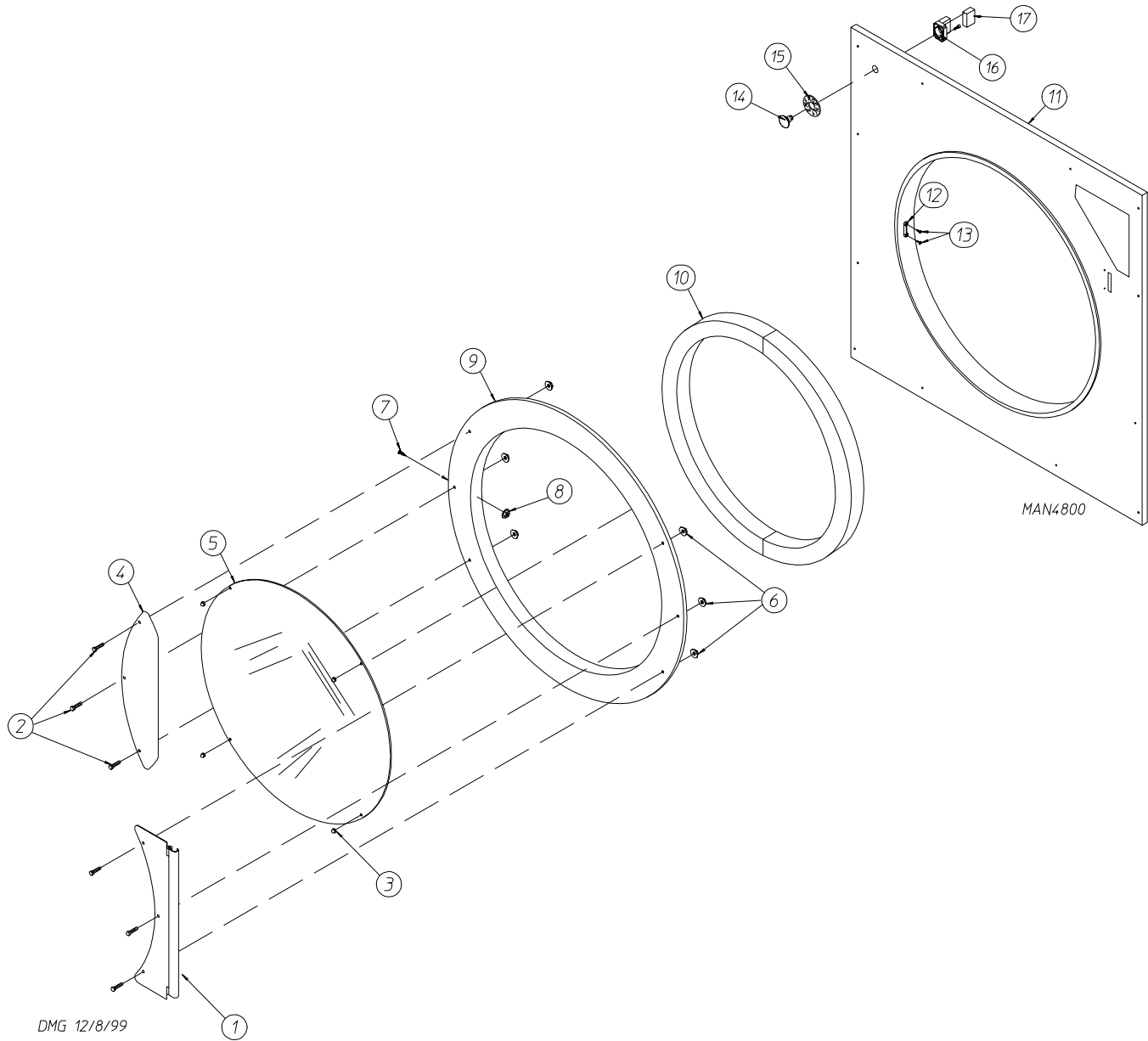
Illus. No.	Part No.	Qty.	Description
1	802042*	1	Magnet Front Panel with E-Stop
2	123553**	1	Large Emergency Stop Mushroom Head Switch (for models mfd. as of December 20, 2007)
3	123506	1	Emergency Stop Nameplate
4	123555**	1	Normally Open Contact Block (for models mfd. as of December 20, 2007)
5	123554**	1	Normally Closed Contact Block with Base (for models mfd. as of December 20, 2007)
6	102004	2	Compact Door Magnet
7	152223	2	#10-32 x 1/2" FH T-20 TORX® Machine Screw

* Specify color when ordering.

** Models mfd. prior to February 20, 2007 will require entire E-Stop assembly kit (P/N 887179).

Front Panel / Main Door Assemblies

For Models Mfd. prior to September 10, 2005



Front Panel / Main Door Assemblies

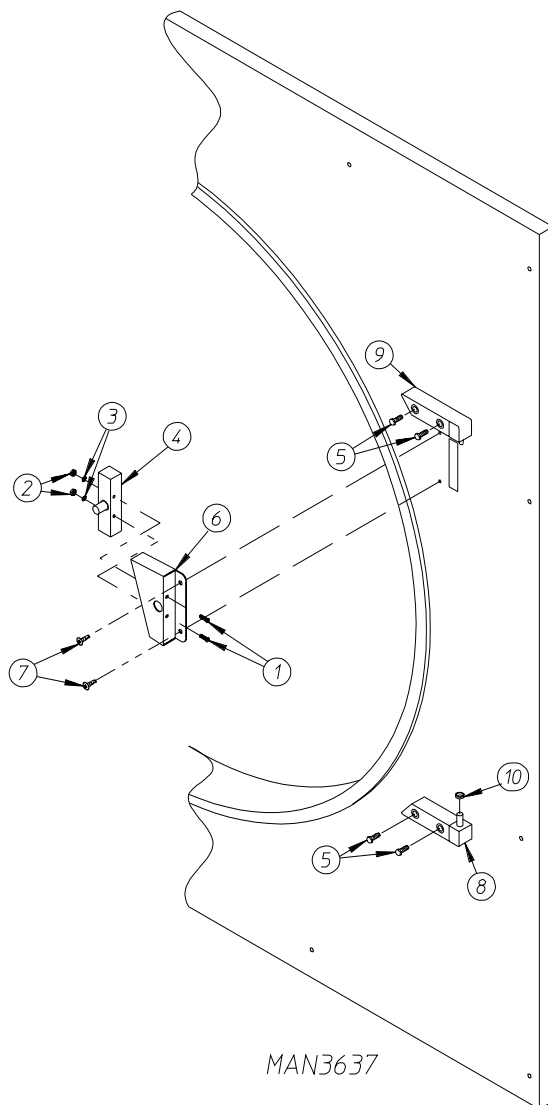
For Models Mfd. prior to September 10, 2005

<u>Illus. No.</u>	<u>Part No.</u>	<u>Qty.</u>	<u>Description</u>
1	881685	1	White Main Door Hinge
	882296	1	Coral Wrinkle Blue Main Door Hinge
2	881740	6	1/4-20 x 5/8" White Carriage Bolt
	881739	6	1/4-20 x 5/8" Coral Wrinkle Blue Carriage Bolt
3	151012	1	#10-32 White Acorn Nut
4	881688	1	White Main Door Handle
	881737	1	Coral Wrinkle Blue Main Door Handle
5	102221	1	30" Door Glass (for models mfd. as of November 6, 2003)
	102214	1	30" Door Glass (for models mfd. prior to November 6, 2003)
	170730	1	Door Glass Adhesive (10.3 oz. cartridge)
6	881806	6	1/4-20 White Free Spin Wash Nut
	882293	6	1/4-20 Coral Wrinkle Blue Free Spin Wash Nut
7	150125	1	Main Door Latch Screw
8	151010	1	#10-32 Acorn Nut
9	881689	1	White Main Door Assembly Complete (includes illus. nos. 1 through 10)
	881761	1	Coral Wrinkle Blue Main Door Assembly Complete (includes illus. nos. 1 through 10)
	881966	1	White Main Door Ring
	882305	1	Coral Wrinkle Blue Cold Rolled Steel Large Main Door Ring
10	882411	1	Extruded Steel Door Gasket
11	835343*	1	Front Panel Assembly
12	170330	1	Friction Door Latch
13	154215	2	5/32" Pop Rivet
14	123553**	1	"Emergency Stop" (E-Stop) Push-Pull Button (for models mfd. as of February 20, 2007)
15	123506**	1	"Emergency Stop" (E-Stop) Nameplate (for models mfd. as of February 20, 2007)
16	123555**	1	Normally Open Contact Block (for models mfd. as of February 20, 2007)
17	123554**	1	Normally Closed Contact Block with Base (for models mfd. as of February 20, 2007)

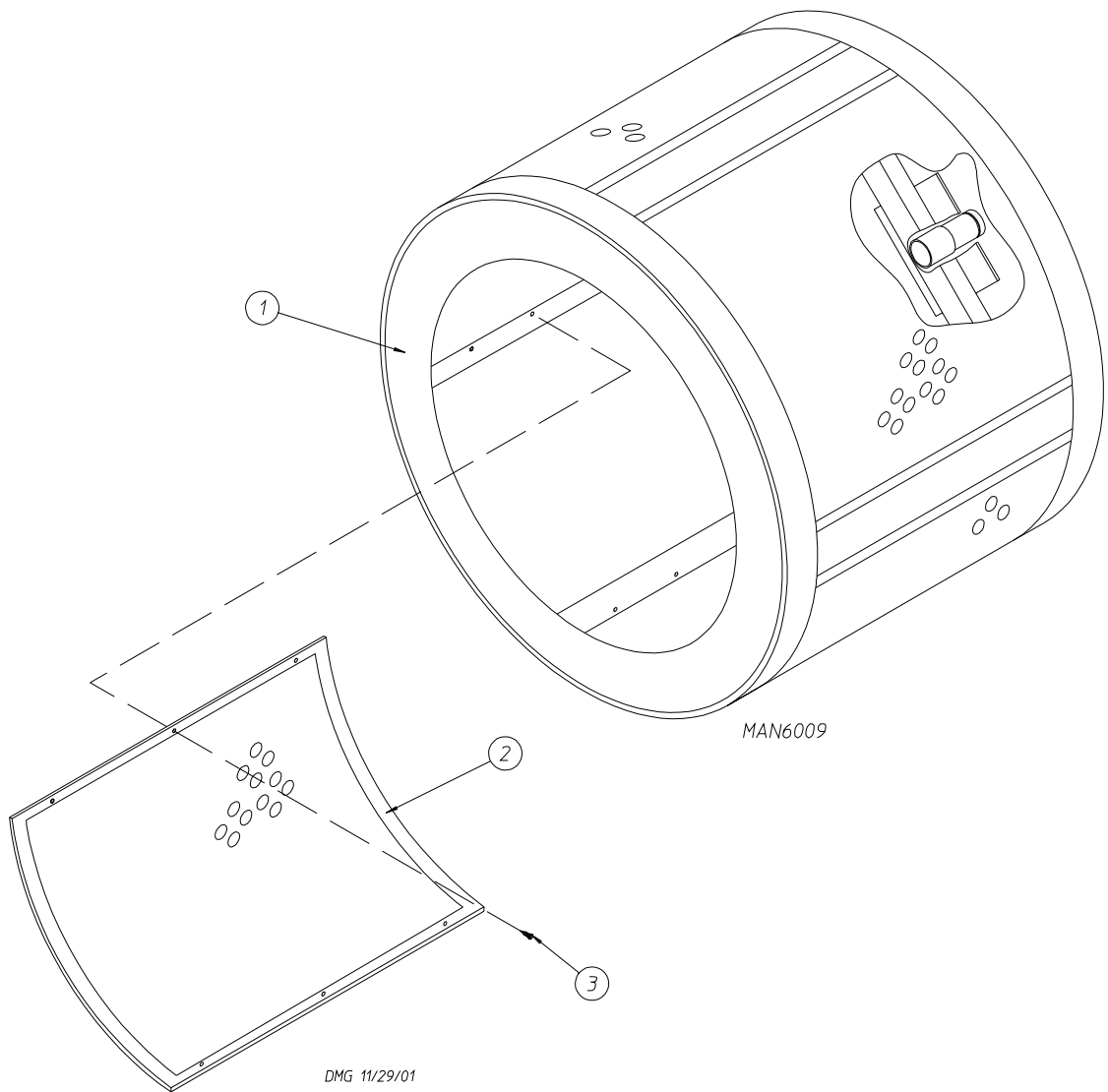
* Specify color when ordering.

** Models mfd. prior to February 20, 2007 will require entire E-Stop assembly kit (P/N 887179).

Main Door Switch Assembly

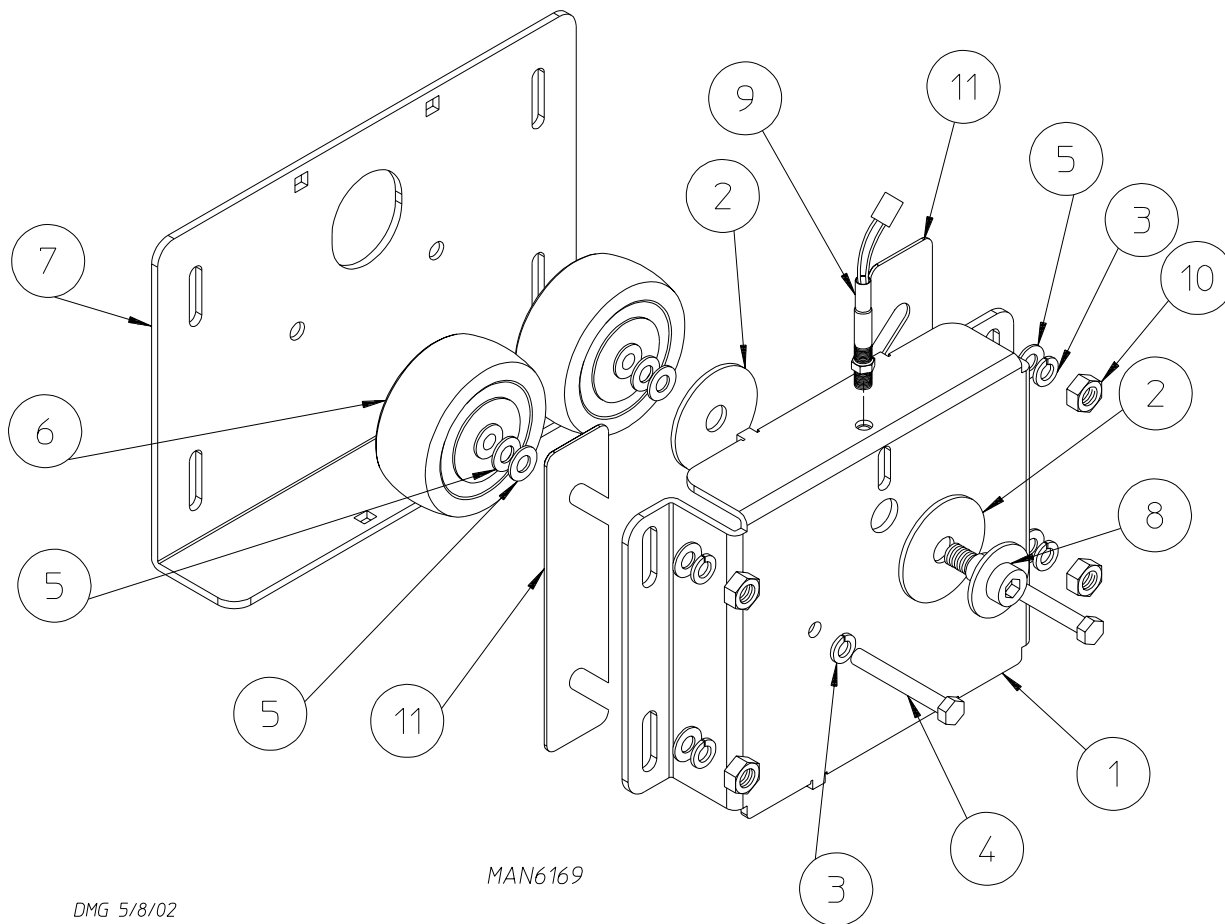


<u>Illus. No.</u>	<u>Part No.</u>	<u>Qty.</u>	<u>Description</u>
1	150006	2	#6-32 x 7/8" Phillips Pan Head Machine Screw
2	152013	2	#6-32 Hex Nut
3	153010	2	#6 Star Washer
4	137005	1	Single-Pole Door Switch
5	150443	4	1/4-20 x 3/4" Stainless Steel Cap Screw
6	881687	1	White Main Door Switch Housing ONLY
	881695	1	Coral Wrinkle Blue Main Door Switch Housing ONLY
	881702	1	White Main Door Switch with Housing Assembly (includes illus. nos. 1 through 4 and 6)
	881700	1	Coral Wrinkle Blue Main Door Switch with Housing Assembly (includes illus. nos. 1 through 4 and 6)
7	150443	2	1/4-20 x 3/4" Stainless Steel Cap Screw
8	881441	1	White Bottom Hinge Block
	881735	1	Coral Wrinkle Blue Bottom Hinge Block
9	881440	1	White Top Hinge Block
	881736	1	Coral Wrinkle Blue Top Hinge Block
10	153031	1	Nylon Washer



<u>Illus. No.</u>	<u>Part No.</u>	<u>Qty.</u>	<u>Description</u>
1	835024	1	Stainless Steel Tumbler Assembly Complete (includes illus. nos. 1 through 3) (for models mfd. as of November 10, 2003)
	835375	1	Tumbler Assembly Complete (includes illus. nos. 1 through 3) (for models mfd. prior to November 10, 2003)
2	333669	4	Stainless Steel Perforated Tumbler Panel (for models mfd. as of November 10, 2003)
	883578	4	Perforated Tumbler Panel (for models mfd. prior to November 10, 2003)
3	150118	48	1/4-20 x 1/4" Phillips Pan Head Screw
-	881619	1	Rotational Sensor Magnet ... Not Illustrated

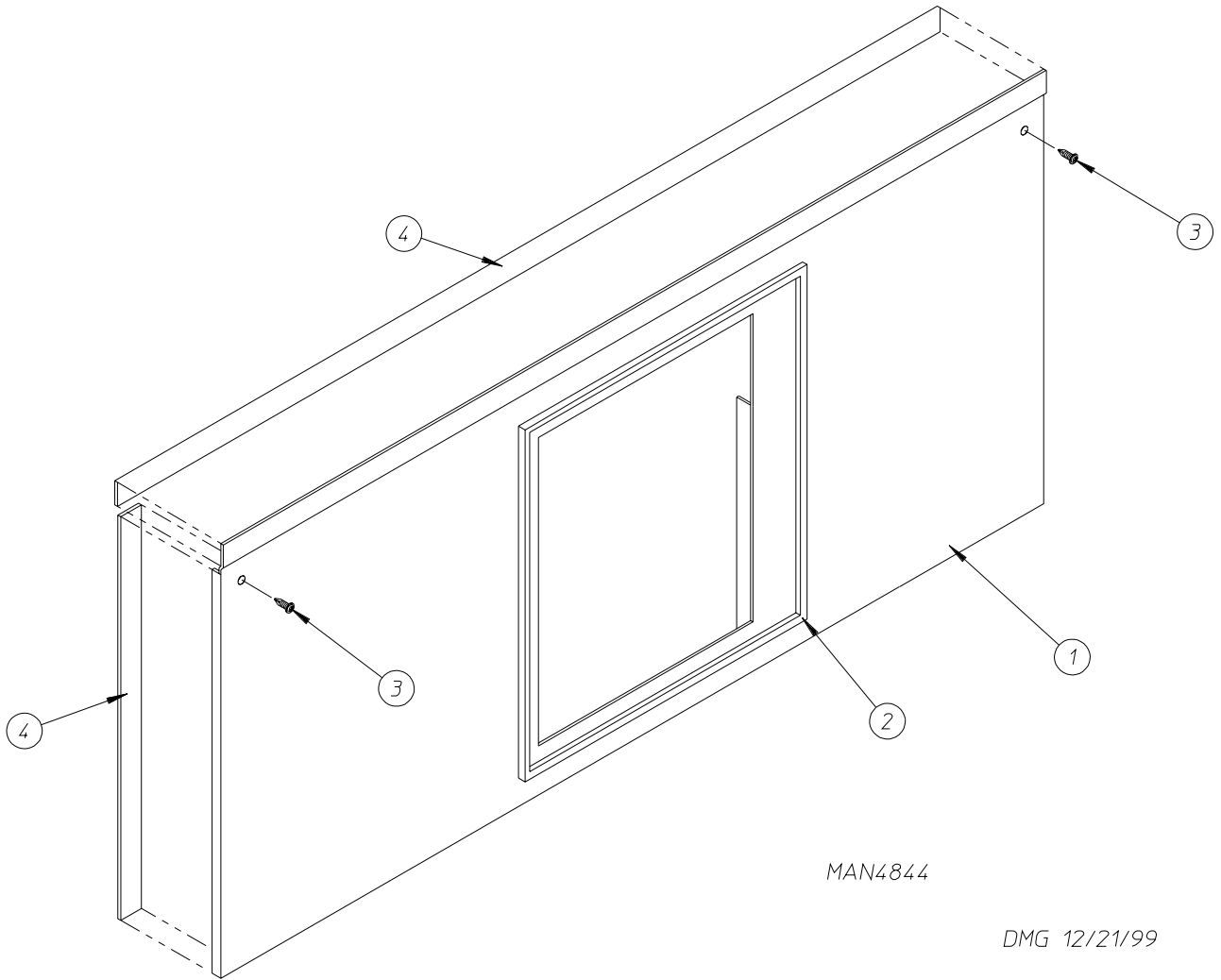
Rotational Sensor / Rear Support Wheels



MAN6169

DMG 5/8/02

Illus. No.	Part No.	Qty.	Description
1	819064	1	Tumbler Shaft Support Assembly Complete (includes illus. nos. 1 through 8)
	835339	1	Tumbler Shaft Support Bracket
2	102394	2	Tumbler Friction Pad
3	153005	6	3/8" Lock Washer
4	150634	2	3/8-16 x 2-3/4" Tap Bolt
5	153004	8	3/8" Flat Washer
6	180018	2	4" x 1-1/2" Hi-Impact Wheel
7	819046	1	Tumbler Adjustment Plate
8	819065	1	Tumbler Shoulder Screw
9	822735	1	Phase 7 Rotational Sensor Assembly
10	152005	4	3/8-16 Hex Nut
11	323433	2	Rear Wheel Shim



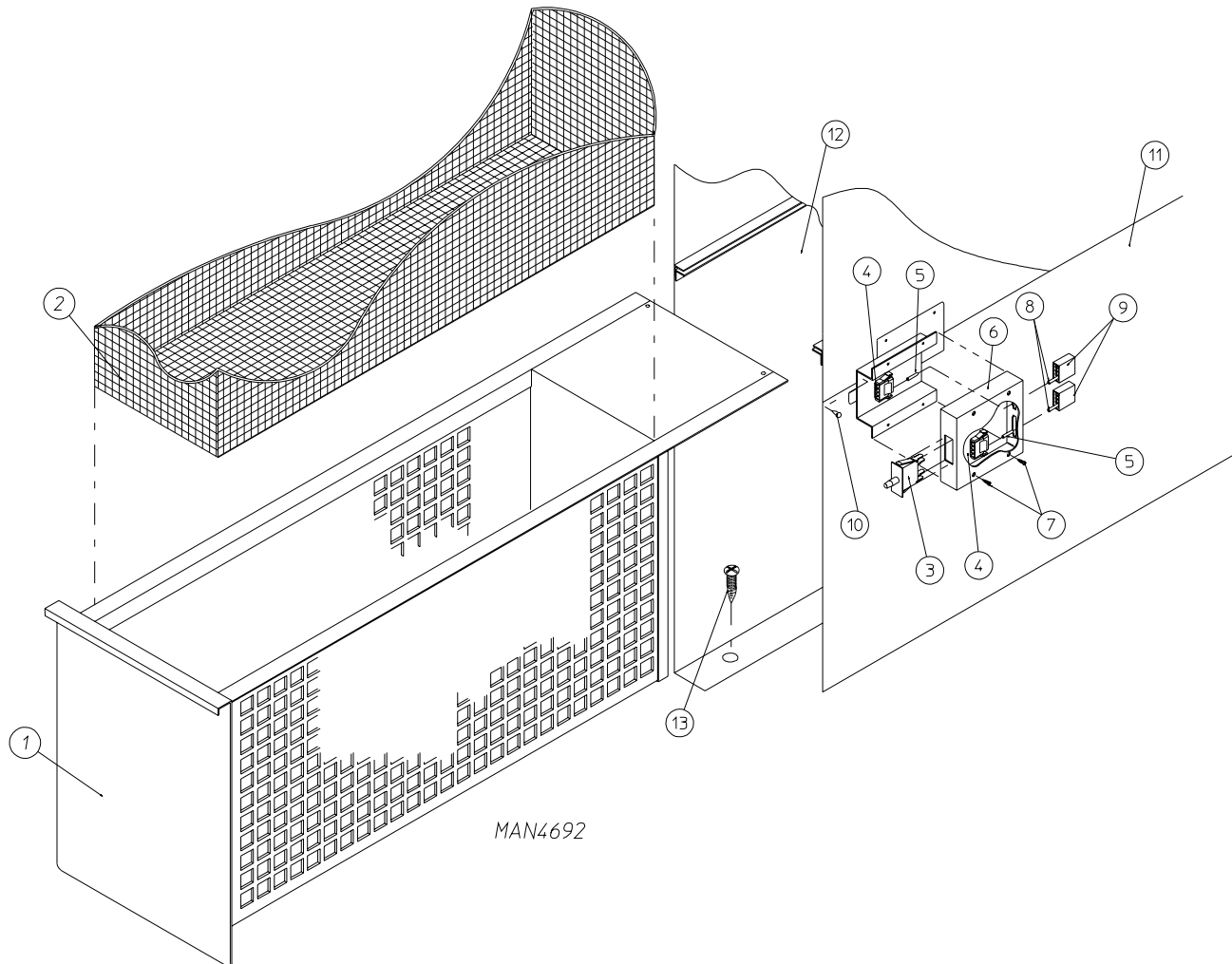
MAN4844

DMG 12/21/99

Illus. No.	Part No.	Qty.	Description
1	882497	1	White Lint Door Assembly (includes illus. nos. 1, 2, and 4)
	882498	1	Coral Wrinkle Blue Lint Door Assembly (includes illus. nos. 1, 2, and 4)
2	117607	6	1/4" x 3/8" Poron Foam (sold by the foot)
3	150309	5	#10-16 x 1/2" Hex Head TEK Crimptite Screw
4	117604	9	Neoprene Sponge Tape (sold by the foot)

Lint Drawer / Lint Drawer Switch Box Assemblies

For Models Mfd. as of February 22, 2003, Which Have Individual Lint Screen and Drawer

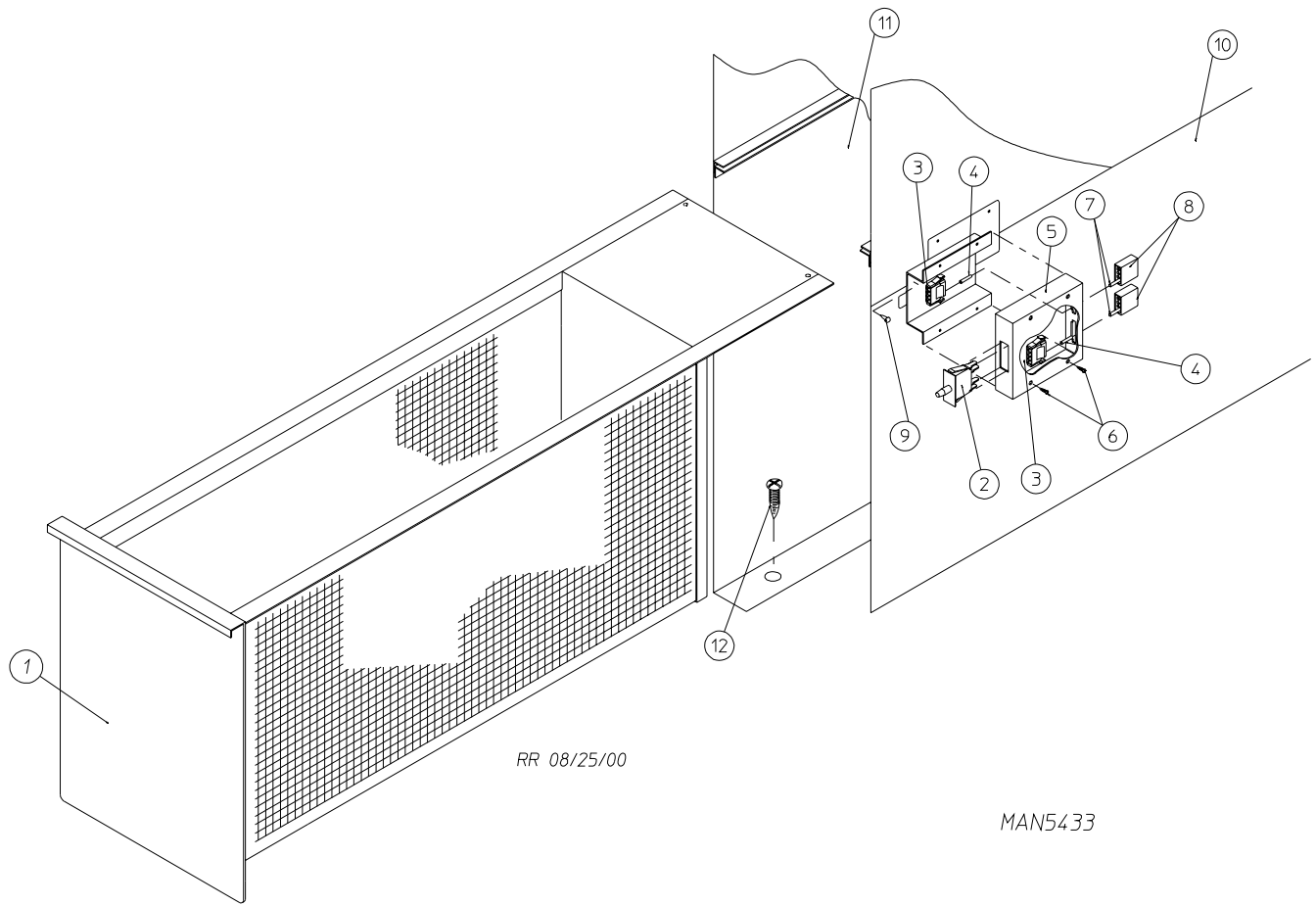


Illus. No.	Part No.	Qty.	Description
1	850959*	1	Lint Drawer Assembly (includes illus. nos. 1 and 2)
2	108220	1	Lint Screen Assembly
3	122116	1	Lint Drawer Switch
4	122605	1	4-Pin Socket Connector
5	122701	2	Socket Terminal
	122801	1	Pin / Socket Extraction Tool
6	822826	1	Lint Drawer Switch Box Assembly Complete (includes illus. nos. 3 through 6)
7	150301	4	#8-18 x 7/16" Phillips Pan Head TEK Screw
8	122700	2	Pin Terminal
9	122604	1	4-Pin Connector
10	150301	2	#8-18 x 7/16" Phillips Pan Head TEK Screw
11	390354	1	Right-Hand Divider Panel
12	390353	1	Left-Hand Divider Panel
13	150301	14	#8-18 x 7/16" Phillips Pan Head TEK Screw

* Specify color when ordering.

Lint Drawer / Lint Drawer Switch Box Assemblies

For Models Mfd. prior to February 22, 2003

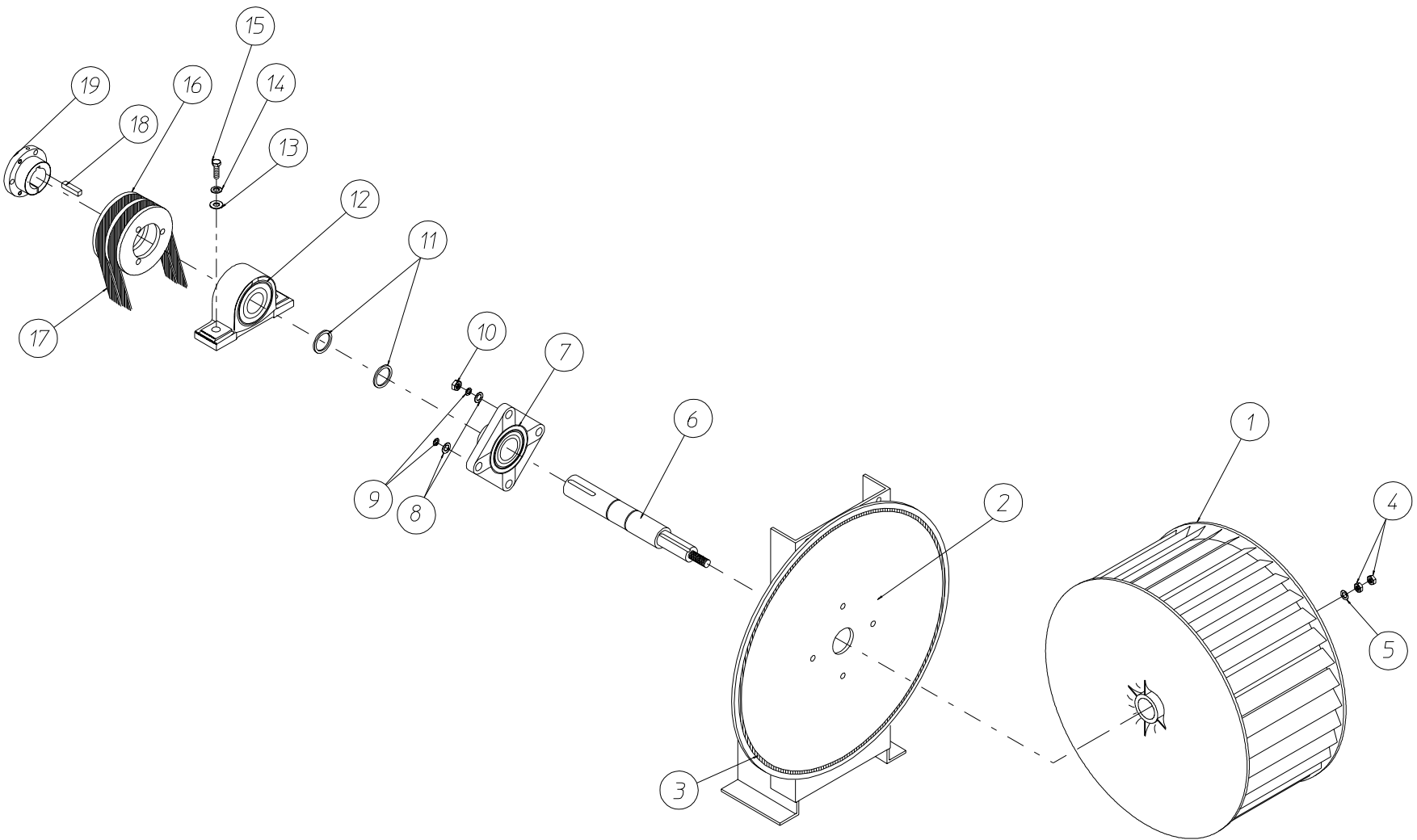


RR 08/25/00

MAN5433

Illus. No.	Part No.	Qty.	Description
1	882792	1	White Lint Drawer / Screen Assembly
	882793	1	Coral Wrinkle Blue Lint Drawer / Screen Assembly
2	122116	1	Lint Drawer Switch
3	122605	1	4-Pin Socket Connector
4	122701	2	Socket Terminal ONLY
	122801	1	Pin / Socket Extraction Tool
	822826	1	Lint Drawer Switch Box Assembly Complete (includes illus. nos. 3 through 6)
6	150301	4	#8-18 x 7/16" Phillips Pan Head TEK Screw
7	122700	2	Pin Terminal
8	122604	1	4-Pin Connector
9	150301	2	#8-18 x 7/16" Phillips Pan Head TEK Screw
10	390354	1	Right-Hand Divider Panel
11	390353	1	Left-Hand Divider Panel
12	150301	14	#8-18 x 7/16" Phillips Pan Head TEK Screw

Fan (Squirrel Cage) Shaft Mount Assembly



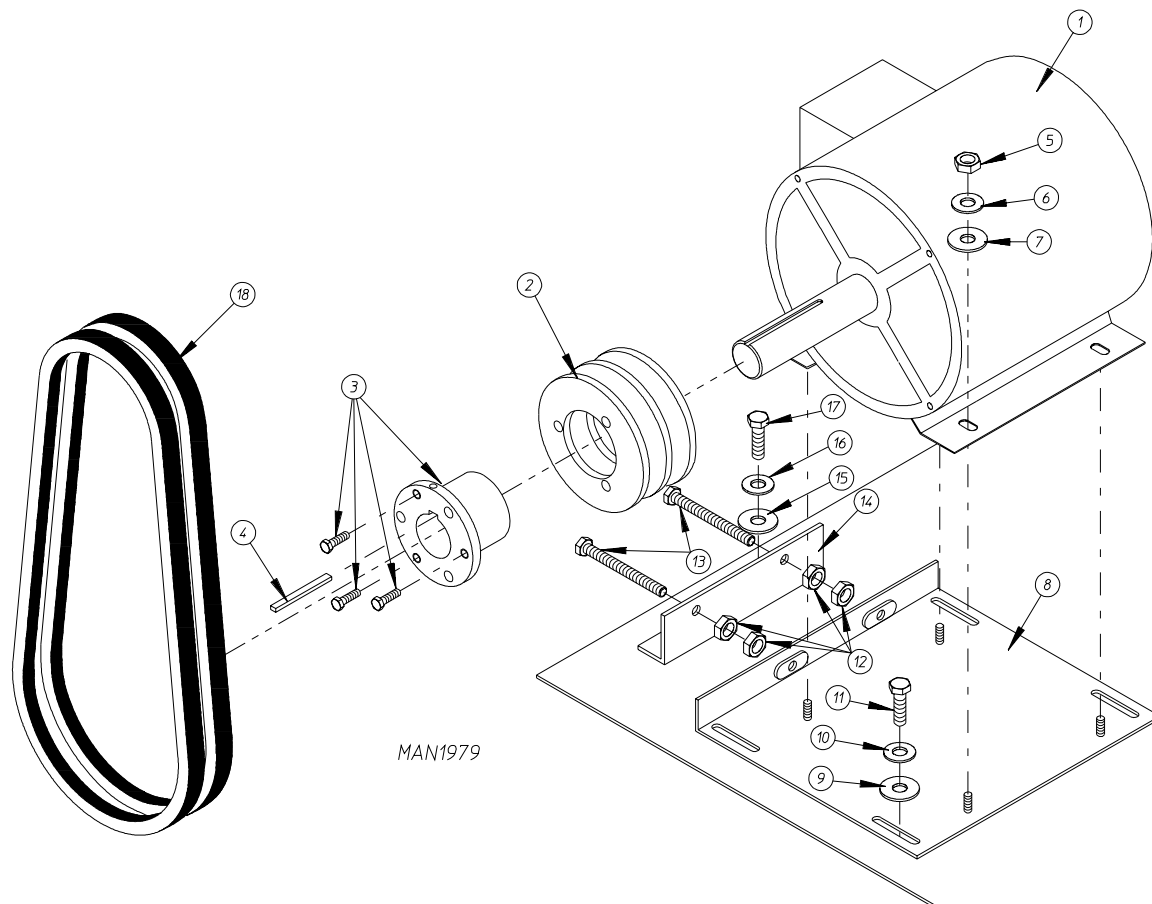
MAN4424

Fan (Squirrel Cage) Shaft Mount Assembly

<u>Illus. No.</u>	<u>Part No.</u>	<u>Qty.</u>	<u>Description</u>
1	100612	1	1-1/4" Bore x 15" Diameter x 6" Blower / Fan (squirrel cage)
2	821078	1	Fan Shaft Mount Assembly Complete (includes illus. nos. 1 through 16, 18, and 19)
	821073	1	Fan Shaft Mount ONLY
3	117604	4	Neoprene Sponge Tape (sold by the foot)
4	152006	2	1/2-20 Left-Hand Jam Nut
5	153065	1	1/2" Flat Washer
6	882930	1	Fan Shaft Assembly (includes illus. nos. 7, 11, and 12)
7	————	1	1-3/8" Flange Bearing with Setscrews and Grease Fitting (sold only as part of illus. no. 6)
8	153004	4	3/8" Flat Washer
9	153005	4	3/8" Lock Washer
10	152005	4	3/8-16 Hex Nut
11	100812	2	1-3/8" Retaining Ring
12	————	1	1-3/8" Pillow Block Bearing (sold only as part of illus. no. 6)
13	153004	2	3/8" Flat Washer
14	153005	2	3/8" Lock Washer
15	150617	2	3/8-16 x 1" Hex Head Bolt
16	101177	1	2B x 5.8 Pulley (for gas models Only)
17*	100184	2	BX-63 Cogged Belt (fan shaft to blower motor) 50/60 Hz
*	100159	2	BX-61 Cogged Belt (fan shaft to blower motor) 575 Volt 60 Hz ONLY
18	100706	1	5/16" x 5/16" x 1-3/8" Key
19	101194	1	SDS x 1-3/8" Bushing

* Replace in matched sets (both belts).

Blower Motor Mount Assembly

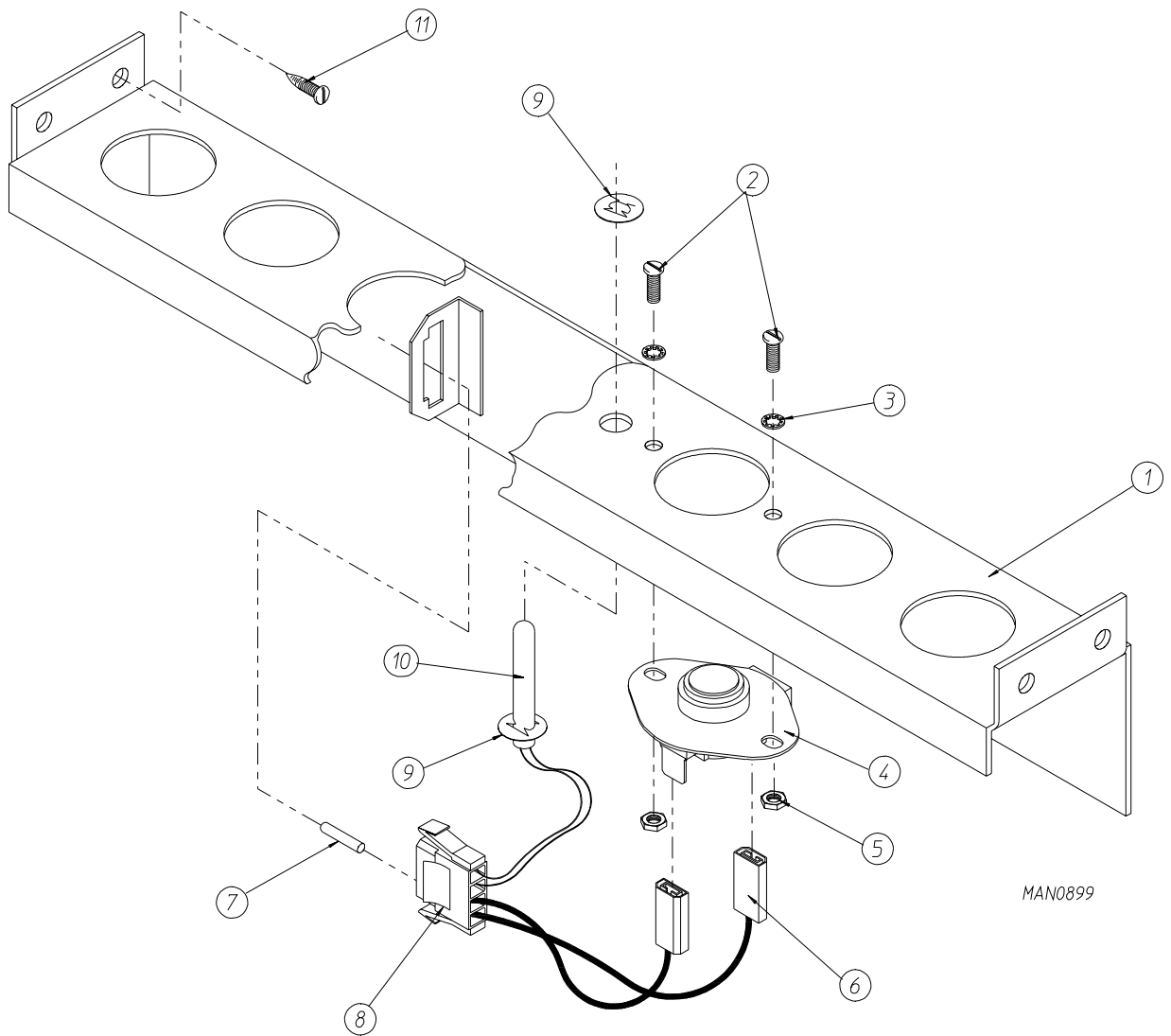


Illus. No.	Part No.	Qty.	Description
1	181030*	1	7.5 hp 208-230/460v 3ø 60 Hz Motor ONLY
	181031*	1	7.5 hp 200-230/380-410v 3ø 50 Hz Motor ONLY
	181039	1	7.5 hp 575v 3ø 60 Hz Motor ONLY
2	101148	1	SB x 4.0 Motor Pulley (60 Hz)
	101147	1	SB x 4.8 Motor Pulley (50 Hz)
3	101152	1	SH x 1-3/8" Bushing (60 Hz)
	101194	1	SDS x 1-3/8" Bushing (50 Hz)
4	100706	1	5/16" x 5/16" x 1-3/8" Key
5	152004	4	5/16-18 Hex Nut
6	153002	4	5/16" Lock Washer
7	153001	4	5/16" Flat Washer
8	821091	1	Motor Mount Adjustment Plate
9	153001	4	5/16" Flat Washer
10	153002	4	5/16" Lock Washer
11	150501	4	5/16-18 x 3/4" Hex Head Machine Bolt
12	152004	4	5/16-18 Hex Nut
13	150503	2	5/16-18 x 2" Hex Head Machine Bolt
14	332322	1	Motor Mount Adjustment Angle
15	153001	2	5/16" Flat Washer
16	153002	2	5/16" Lock Washer
17	150501	2	5/16-18 x 3/4" Hex Head Machine Bolt
18**	100184	2	BX-63 Cogged Belt (matched sets) 50/60 Hz
**	100159	2	BX-61 Cogged Belt (matched sets) 575v 60 Hz ONLY

* Specify voltage when ordering.

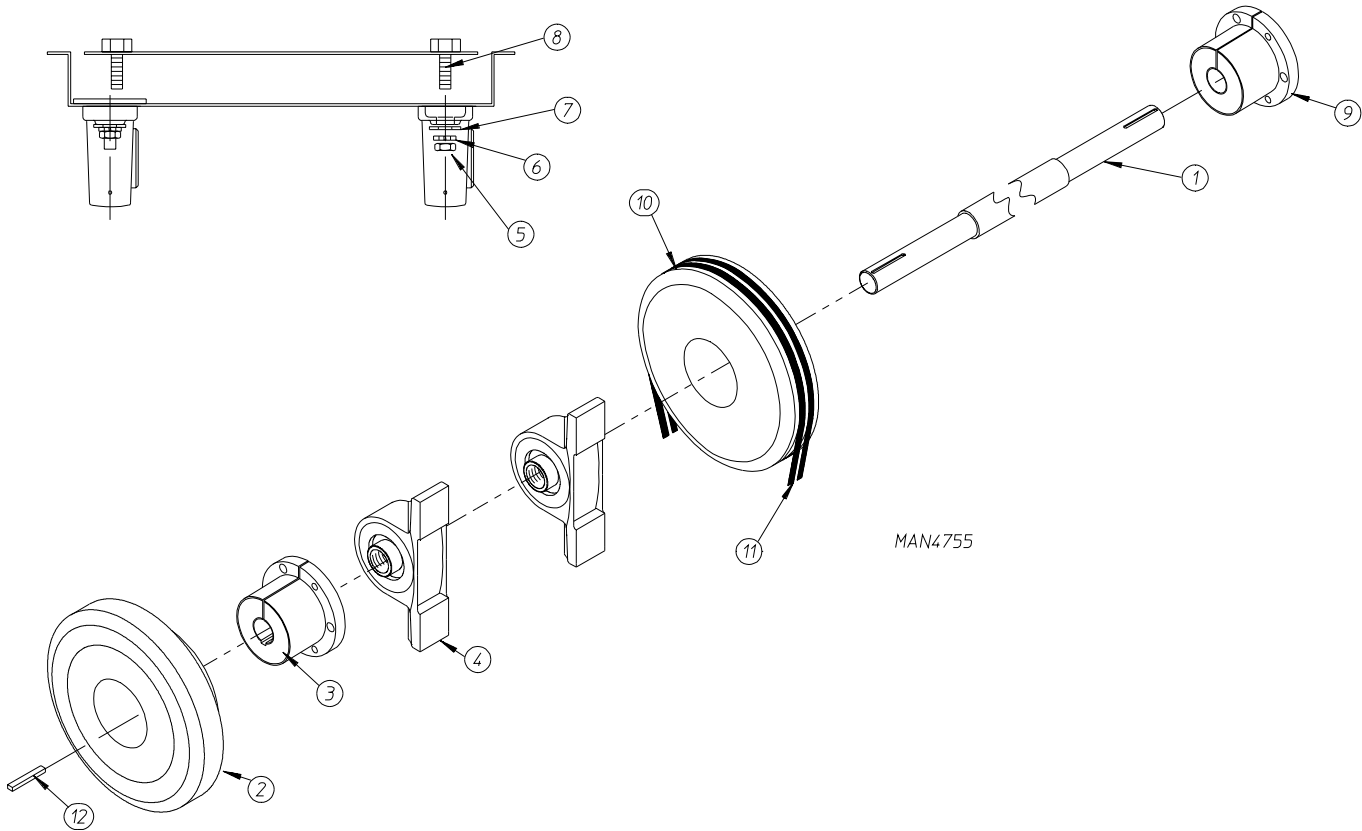
** Replace in matched sets (both belts).

Microprocessor Temperature Sensor Bracket Assembly



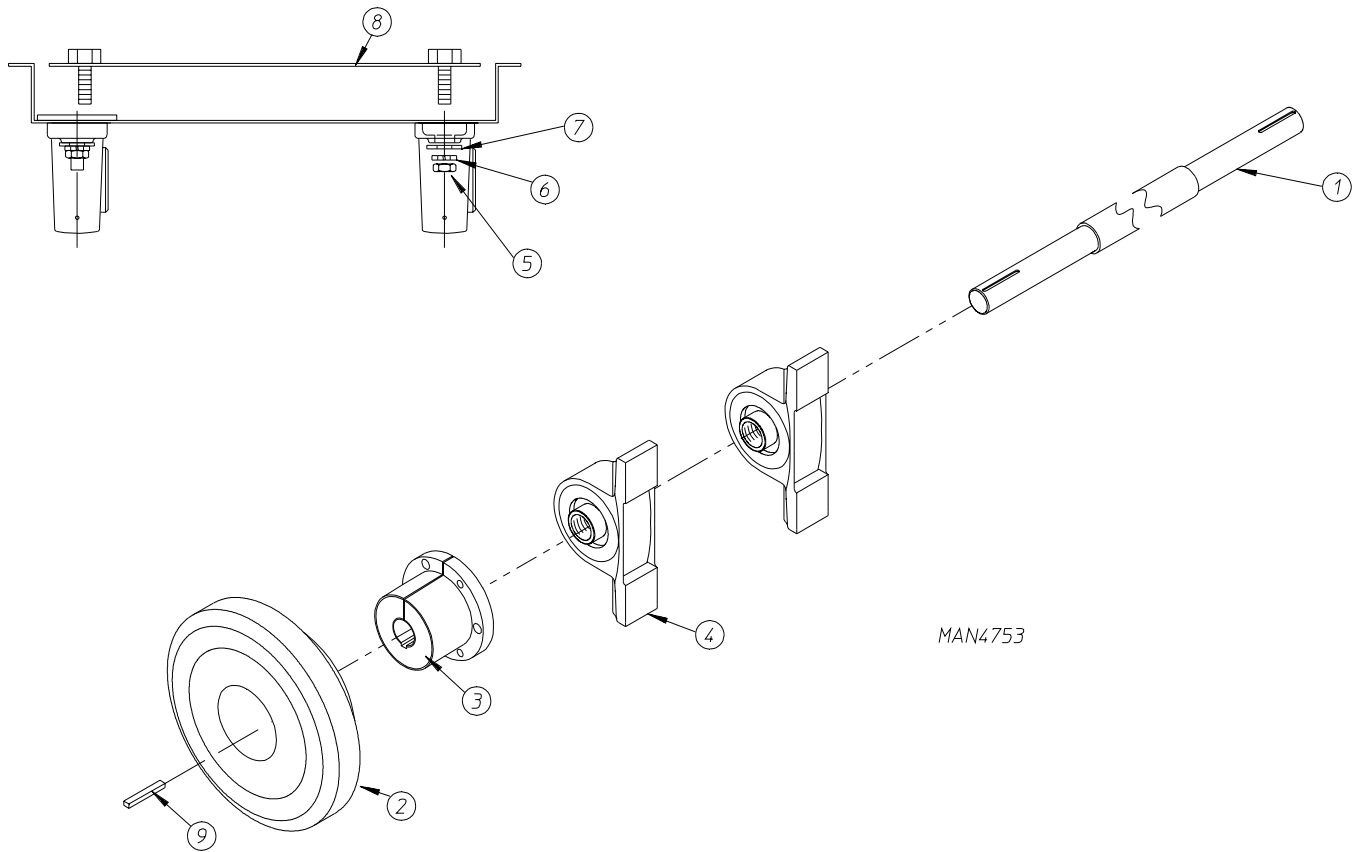
<u>Illus. No.</u>	<u>Part No.</u>	<u>Qty.</u>	<u>Description</u>
1	815931	1	Microprocessor Temperature Sensor Bracket Complete (includes illus. nos. 1 through 10)
	820967	1	Microprocessor Temperature Sensor Bracket ONLY
2	150005	2	#6-32 x 1/4" Phillips Round Head Machine Screw
3	153010	2	#6 Star Washer
4	130302	1	225° Manual Reset Thermostat
5	152000	2	#6-32 Hex Nut
6	121028	2	1/4" x 0.032 Insulated Terminal
7	122701	4	Socket Terminal ONLY
	122801	1	Pin / Socket Extraction Tool
8	122605	1	4-Pin Socket Connector
9	154007	2	1/4" Push-On Fastener
10	880251	1	1/4" Temperature Sensor Probe Assembly (includes illus. nos. 6 through 10)
11	150301	4	#8-18 x 7/16" Phillips Pan Head TEK Screw

Drive Shaft Assembly



Illus. No.	Part No.	Qty.	Description
1	882460	1	Tumbler Shaft Assembly (includes illus. nos. 1 and 4)
2	180043	1	11" Drive Wheel
3	101234	1	1-3/8" Taper Lock Bushing
4	—	2	1-1/2" Pillow Block Bearing (sold only as part of illus. no. 1)
5	152011	4	1/2-13 Hex Nut (for models mfd. as of August 22, 2003)
	152005	4	3/8-18 Hex Nut (for models mfd. prior to August 22, 2003)
6	153026	4	1/2" Lock Washer (for models mfd. as of August 22, 2003)
	153005	4	3/8" Lock Washer (for models mfd. prior to August 22, 2003)
7	153050	4	1/2" Flat Washer (for models mfd. as of August 22, 2003)
	153004	4	3/8" Flat Washer (for models mfd. prior to August 22, 2003)
8	836024	2	Bearing Backing Plate Assembly (for models mfd. as of August 22, 2003)
	835360	2	Bearing Backing Plate Assembly (for models mfd. prior to August 22, 2003)
9	101184	1	1-3/8" Bushing with Setscrew
10	101189	1	2B x 8.0 Pulley
11*	100140	2	BX-38 Cogged Belt
12	100717	1	5/16" x 5/16" x 2-3/4" Key

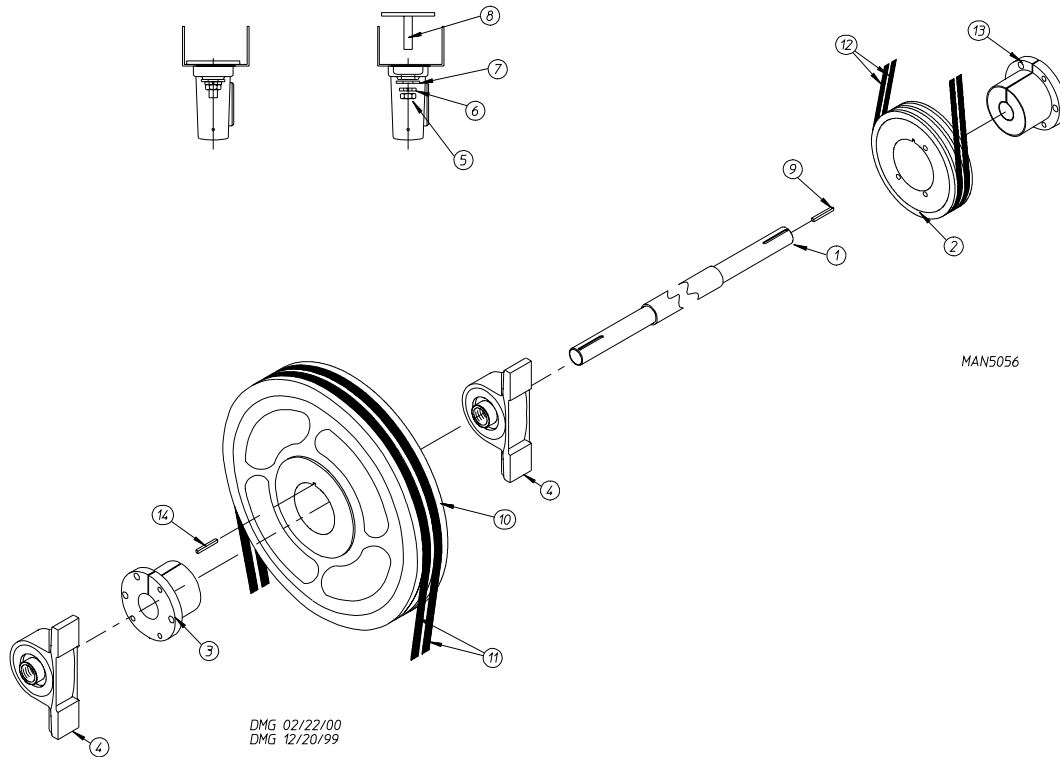
* Replace in matched sets (both belts).



MAN4753

<u>Illus. No.</u>	<u>Part No.</u>	<u>Qty.</u>	<u>Description</u>
1	882460	1	Idler Shaft Assembly (includes illus. nos. 1 and 4)
2	180043	1	11" Drive Wheel
3	101234	1	1-3/8" Taper Lock Bushing
4	_____	2	1-3/8" Pillow Block Bearing (sold only as part of illus. no. 1)
5	152011	4	1/2-13 Hex Nut (for models mfd. as of August 22, 2003)
	152005	4	3/8-18 Hex Nut (for models mfd. prior to August 22, 2003)
6	153026	4	1/2" Lock Washer (for models mfd. as of August 22, 2003)
	153005	4	3/8" Lock Washer (for models mfd. prior to August 22, 2003)
7	153050	4	1/2" Flat Washer (for models mfd. as of August 22, 2003)
	153004	4	3/8" Flat Washer (for models mfd. prior to August 22, 2003)
8	835410	2	Bearing Backing Plate Assembly (for models mfd. as of August 22, 2003)
	835360	2	Bearing Backing Plate Assembly (for models mfd. prior to August 22, 2003)
9	100717	1	5/16" x 5/16" x 2-3/4" Long Key

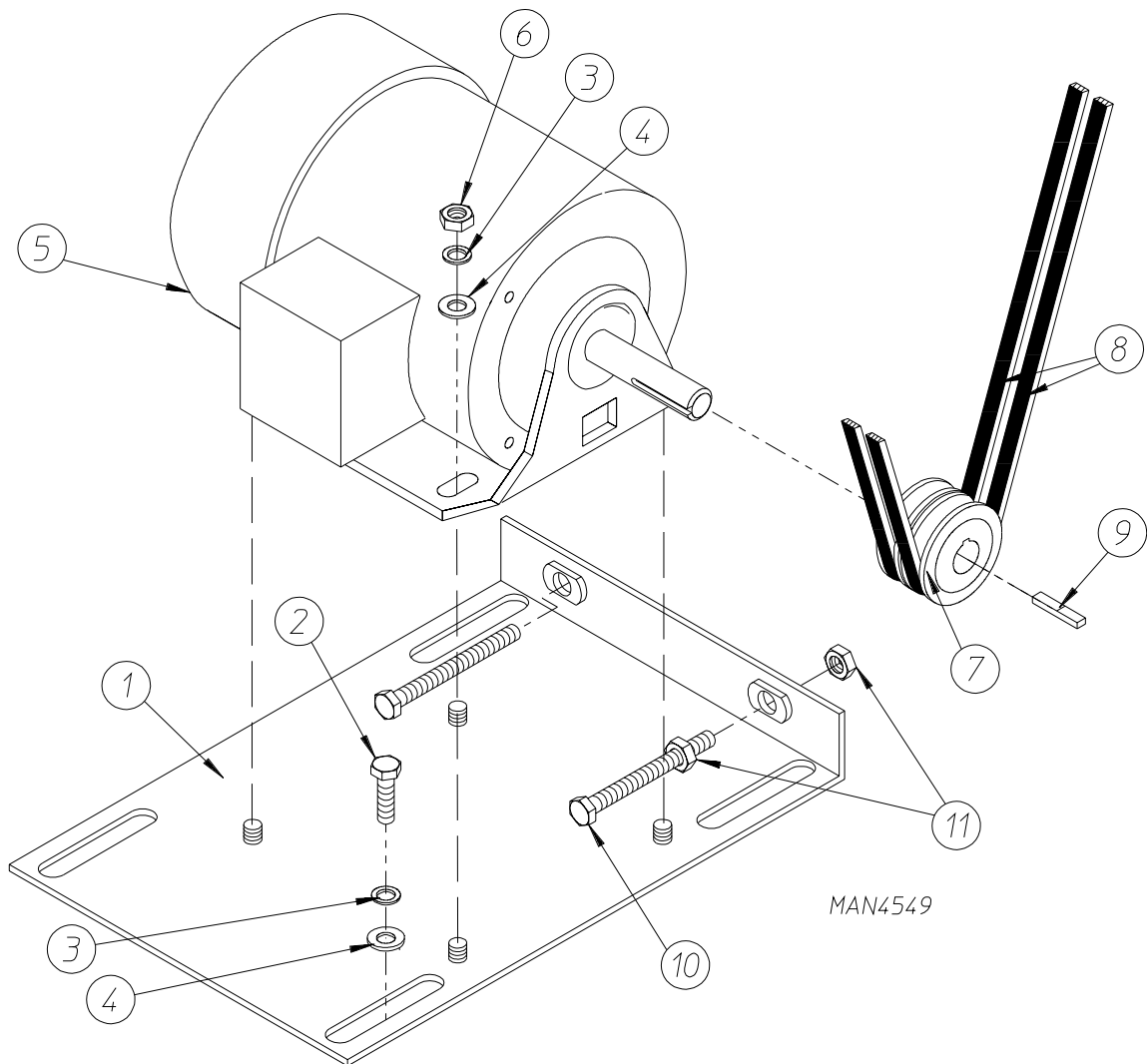
Speed Reducer Shaft Assembly



<u>Illus. No.</u>	<u>Part No.</u>	<u>Qty.</u>	<u>Description</u>
1	882505	1	Speed Reducing Shaft Assembly (includes illus. nos. 1, 3, 4, and 10)
2	101160	1	2B x 3.4 SH Sheave
3	—	1	1-3/8" Bushing with Setscrew (sold only as part of illus. no. 1)
4	—	2	1-3/8" Pillow Block Bearing (sold only as part of illus. no. 1)
5	152011	4	1/2-13 Hex Nut (for models mfd. as of August 22, 2003)
	152005	4	3/8-18 Hex Nut (for models mfd. prior to August 22, 2003)
6	153026	4	1/2" Lock Washer (for models mfd. as of August 22, 2003)
	153005	4	3/8" Lock Washer (for models mfd. prior to August 22, 2003)
7	153050	4	1/2" Flat Washer (for models mfd. as of August 22, 2003)
	153004	4	3/8" Flat Washer (for models mfd. prior to August 22, 2003)
8	836024	2	Bearing Back Up Plate (for models mfd. as of August 22, 2003)
	835361	2	Bearing Back Up Plate (for models mfd. prior to August 22, 2003)
9	100717	1	5/16" x 5/16" x 2-3/4" Long Key
10	—	1	2B x 13.6" SK Sheave (sold only as part of illus. no. 1)
11*	102406	2	BX-52 Belt (for 60 Hz models)
	100124	2	BX-53 Belt (for 50 Hz models)
12*	100140	2	BX-38 Cogged Belt
13	101152	1	SH x 1-3/8" Bushing (60 Hz) (includes illus. no. 9)
14	100717	1	5/16" x 5/16" x 2-3/4" Key

* Replace in matched sets (both belts).

Totally Enclosed, Non-Venting Drive Motor Assembly

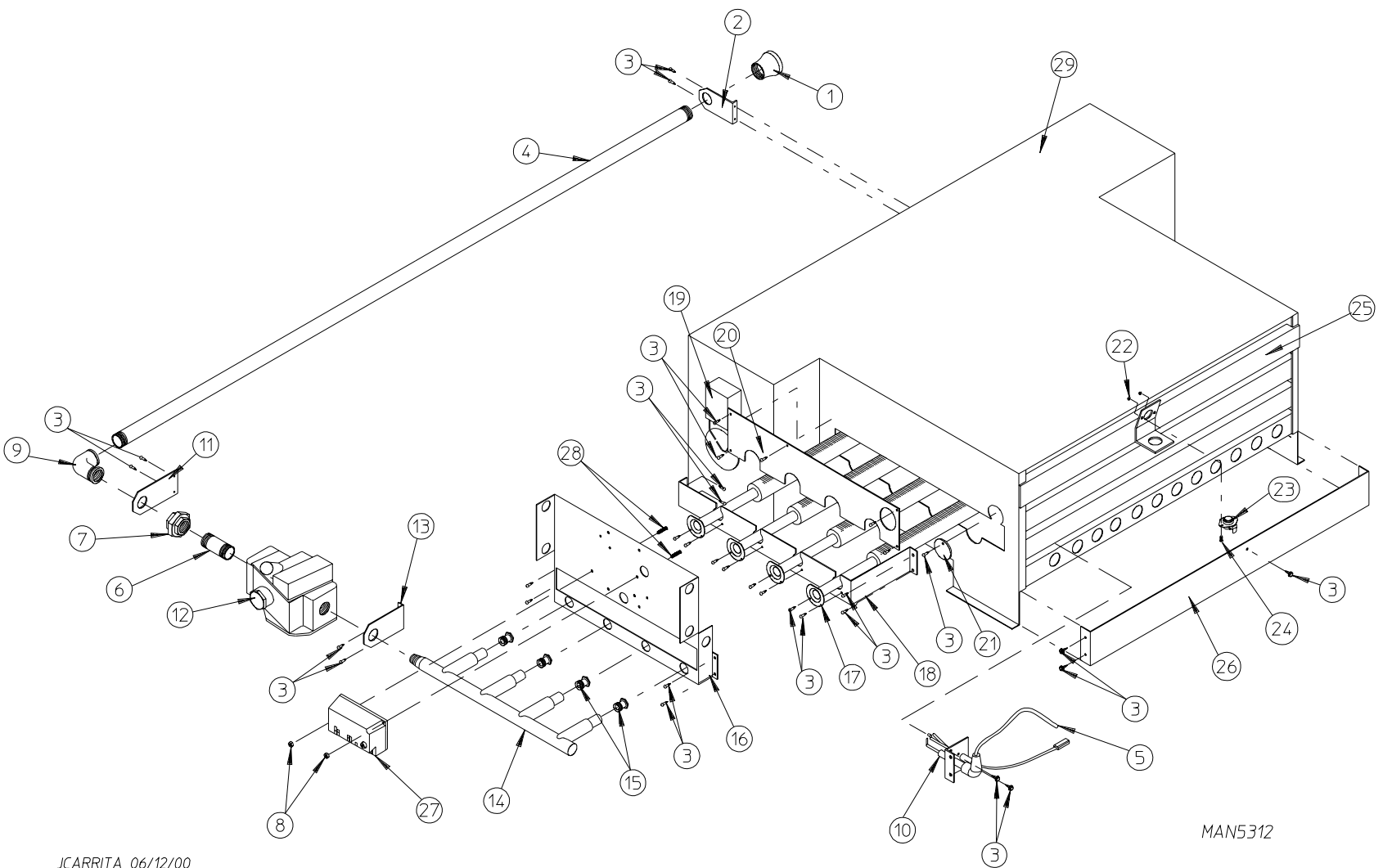


<u>Illus. No.</u>	<u>Part No.</u>	<u>Qty.</u>	<u>Description</u>
1	835297	1	Motor Adjustment Plate
2	150501	4	5/16-18 x 3/4" Hex Head Machine Bolt
3	153002	8	5/16" Lock Washer
4	153001	8	5/16" Flat Washer
5	882078	1	3 hp 208-230/380/416/460v 3 ϕ 50/60 Hz Totally Enclosed, Non-Venting Motor
	181019	1	3 hp 575v 3 ϕ 60 Hz Totally Enclosed, Non-Venting Motor
6	152004	4	5/16" Hex Nut
7	101235	1	1-1/8" Pulley
8*	102406	2	BX-52 Belt (for 60 Hz models)
	100124	2	BX-53 Belt (for 50 Hz models)
9**	—	1	5/16" Key
10	150619	2	3/8-16 x 3" Tap Bolt
11	152005	4	3/8-16 Hex Nut

* Replace in matched sets (both belts).

** Consult factory.

Direct Spark Ignition Burner Assembly



MAN5312

JCARRITA 06/12/00

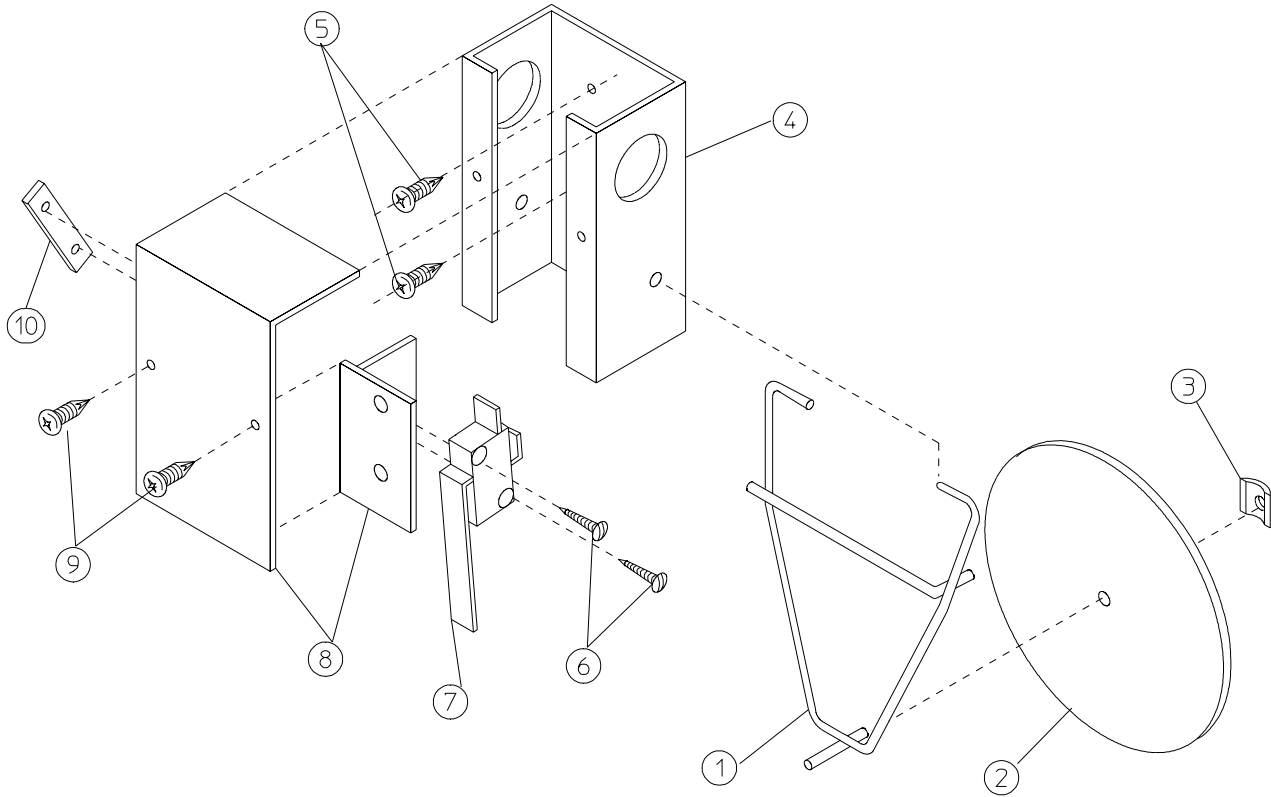
Direct Spark Ignition Burner Assembly

<u>Illus. No.</u>	<u>Part No.</u>	<u>Qty.</u>	<u>Description</u>
1	142929	1	1-1/2" to 1" Reducing Coupling
2	332117	1	Pipe Bracket
3	150309	33	#10-16 x 1/2" Hex Head TEK Crimptite Screw
4	142583	1	1" x 40" Nipple
5	829999	1	High Voltage Ignition Cable (for modules with 1/4 spade connection)
	128919	1	High Voltage Ignition Cable (for modules with spike style connection)
6	142808	1	1" x 3" Nipple
7	142602	1	1" Union
8	152013	2	#6-32 Hex Nut
9	142507	1	1" x 90° Street Elbow
10	128915	1	Direct Spark Ignition Ignitor
11	332487	1	Gas Pipe Bracket Straight Extended
12	140017	1	1" 24 VAC Redundant Gas Valve (natural gas)
	882945	1	1" 24 VAC Gas Valve Liquid Propane
13	332486	1	Gas Pipe Bracket Bent Extended
14	141240	1	4-Port Manifold
15	140839*	4	#2 Burner Orifice (natural gas)
	140820*	4	#29 Burner Orifice (liquid propane gas)
16	390169	1	Direct Spark Ignition Mount Manifold Rest
17	881492	4	Burner Tube
18	332121	1	Burner Tube Support
19	————	1	Sail Switch (refer to Sail Switch Assembly on page 26)
20	332113	1	Burner Box Cover Plate
21	331290	1	Ignitor / Flame-Probe Sight Hole Disc
22	151000	2	#6-32 Pal Nut
23	130201	1	330° Manual Reset Hi-Limit
24	150005	2	#6-32 x 1/4" Phillips Round Head Machine Screw
25	821457	1	Burner Hi-Limit Bracket
26	332256	1	Large Dryer Liquid Propane Burner Baffle (liquid propane models Only)
27	883849	1	Direct Spark Ignition Module (3 tries) with High Voltage Wire
28	153562	2	#6-32 x 3/4" Clinch Stud
29	835037**	1	Burner Assembly (natural gas Only) Complete (less orifice)
	821960**	1	Burner Assembly (liquid propane gas Only) Complete (less orifice)
	820904	1	Burner Box ONLY
	882118*	1	ML-175 Liquid Propane Conversion Kit

* Consult factory for elevations over 2,000 feet.

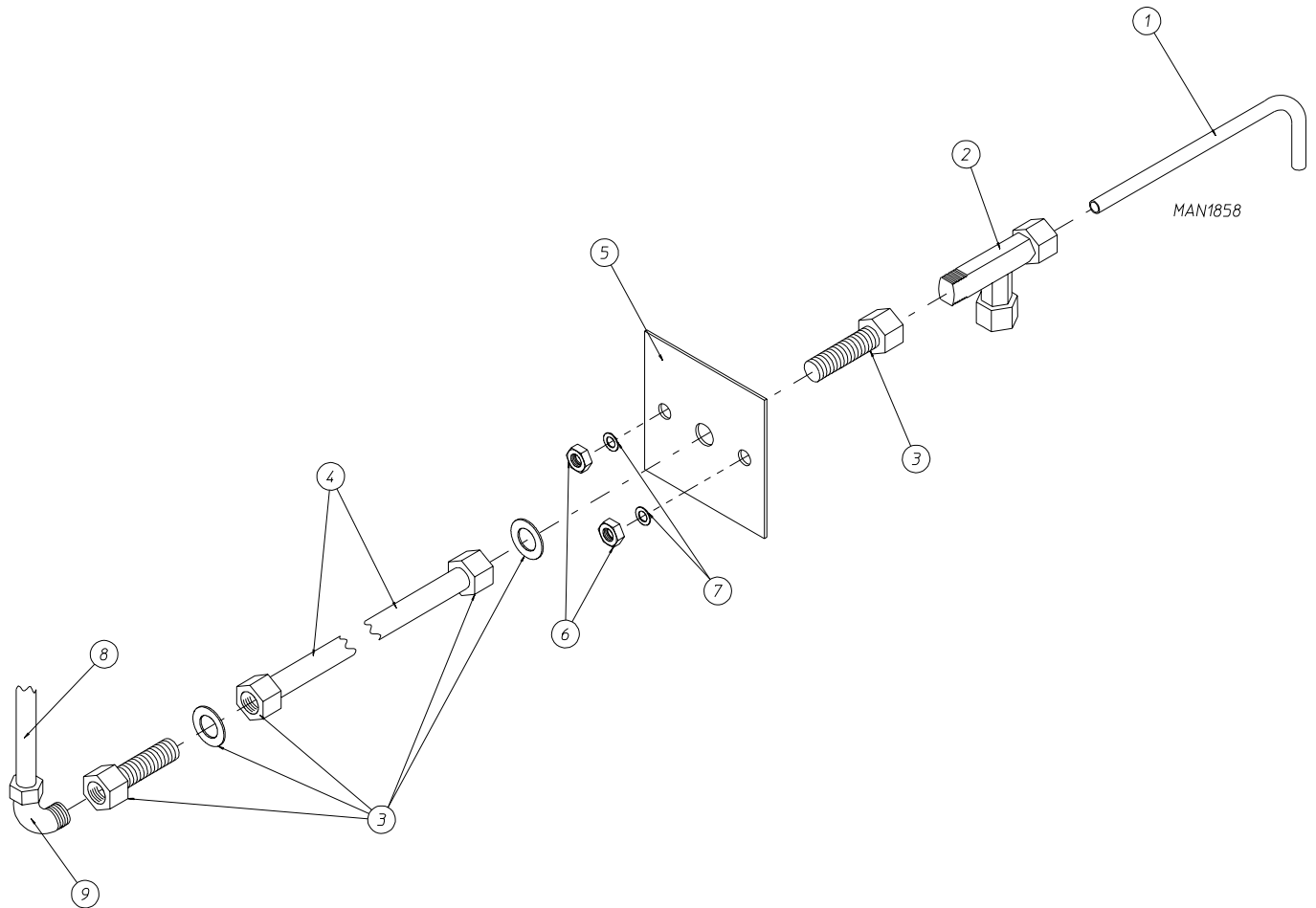
** Orifices are not included and must be ordered separately.

Sail Switch Assembly



MAN0440

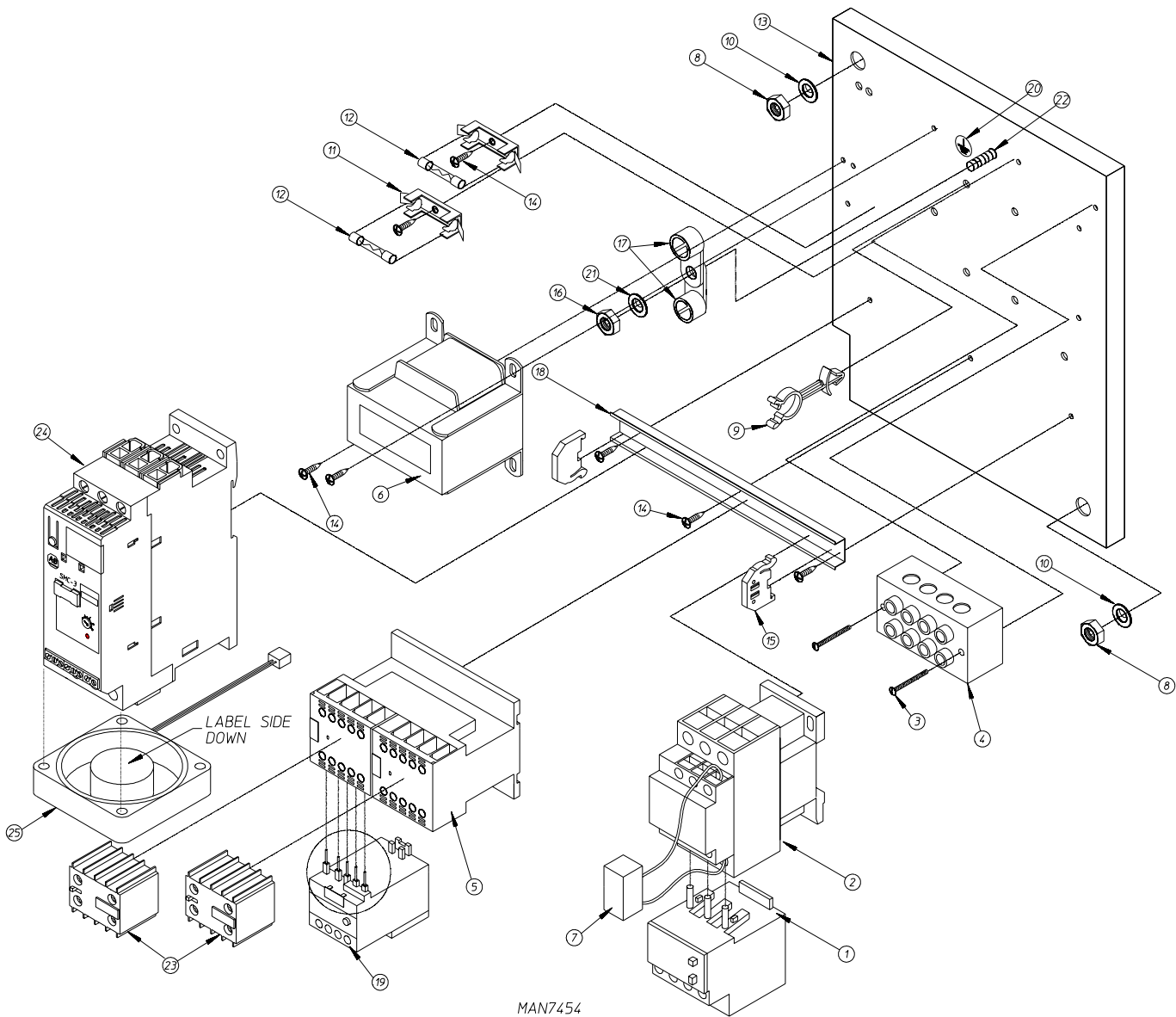
<u>Illus. No.</u>	<u>Part No.</u>	<u>Qty.</u>	<u>Description</u>
1	105500	1	Sail Switch Actuator Rod
2	319202	1	Sail Switch Damper (flat)
3	154002	1	1/8" Push-On Fastener
4	802800	1	Sail Switch Box with Cover and Bracket ONLY
	802801	1	Sail Switch Box Assembly Complete For Microprocessor Controller (computer) Models ONLY (includes illus. nos. 1 through 4 and 6 through 10)
	882010	1	Sail Switch Box Assembly Complete For Dual Timer Models ONLY (includes illus. nos. 1 through 4 and 6 through 10)
5	150300	2	#10-16 x 1/2" Hex Washer TEK Screw
6	150303	2	#4 x 3/4" Pan Head "A" Machine Screw
7	122200	1	Sail Switch
8	802799	1	Sail Switch Box Cover and Bracket
9	150309	2	#10-16 x 1/2" Hex Head TEK Crimptite Screw
10	154004	1	Twin Speed Nut



<u>Illus. No.</u>	<u>Part No.</u>	<u>Qty.</u>	<u>Description</u>
1	332700	1	Air Jet Tube
2	143287	1	1/4" x 1/8" M.P.T. Male Run Tee
3	143259	2	1/4" x 1/8" F.P.T. Bulkhead Fitting
4	143100	36	1/4" Aluminum Tube (sold by the inch)
5	821081	1	Air Jet Mounting Plate Assembly (includes illus. nos. 1 through 9)
	332531	1	Air Jet Mounting Plate ONLY
6	152002	2	1/4-20 Hex Nut
7	153007	2	1/4" Lock Washer
8	143110	5	1/4" Poly-Flo Tubing (sold by the foot)
9	143149	1	1/4" x 1/8" M.P.T. 90° Elbow

Reversing Relay Panel Assembly

For 208-240 Volts for Models Mfd. as of January 25, 2006



Reversing Relay Panel Assembly

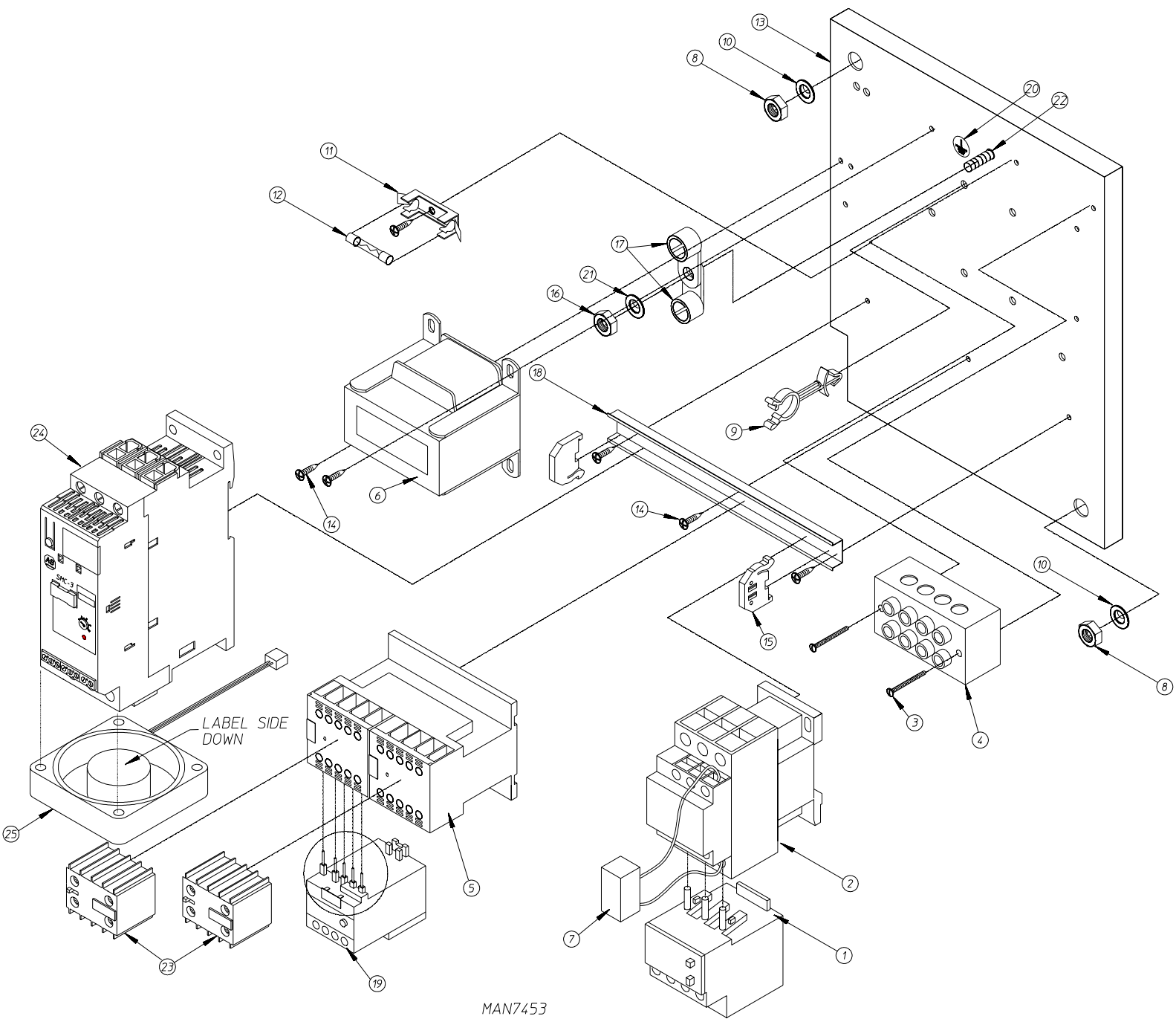
For 208-240 Volts for Models Mfd. as of January 25, 2006

<u>Illus. No</u>	<u>Part No.</u>	<u>Qty.</u>	<u>Description</u>
1	801890*	1	5-27A Overload Assembly
2	131393*	1	32-amp Contactor
3	150539	2	#8 x 1-1/4" Phillips Pan Head Zinc Screw
4	120701	1	4-Position Terminal Block
5	131387*	1	Reversing Contactor with Coil Suppression
6	822764	1	208-240V Transformer Assembly
7	137015	1	Arc Suppressor with 3" Leads
8	152004	2	5/16-18 Hex Nut
9	121502	1	1/2" Wire Standoff
10	153002	2	5/16" Lock Washer
11	136008	2	Fuse Holder
12	136057	2	1/2-amp 3AG Slo-Blo Fuse
13	322346	1	Relay Panel
14	150301	7	#8-18 x 7/16" Phillip Head TEK Screw
15	120774	2	End Stop for Din Rail
16	152002	1	1/4-20 Hex Nut
17	121010	2	L70 14-4 Terminal Lug
18	120768	8-1/2"	Din Rail (sold by the inch)
19	801890*	1	5-27 Overload Assembly
20	112075	1	Ground Label
21	153021	1	1/4" Lock Washer
22	153525	1	1/4-20 x 1" Self-Clinching Stud
23	131391*	2	Auxiliary Contact Block 2 Normally Open
24	132275	1	Softstart 16A 100-240VAC Control
25	132282	1	Softstart Fan

* When replacing connecting components it may be necessary to replace both components. Contact factory for additional information.

Reversing Relay Panel Assembly

For 380-416 Volts for Models Mfd. as of January 26, 2006



Reversing Relay Panel Assembly

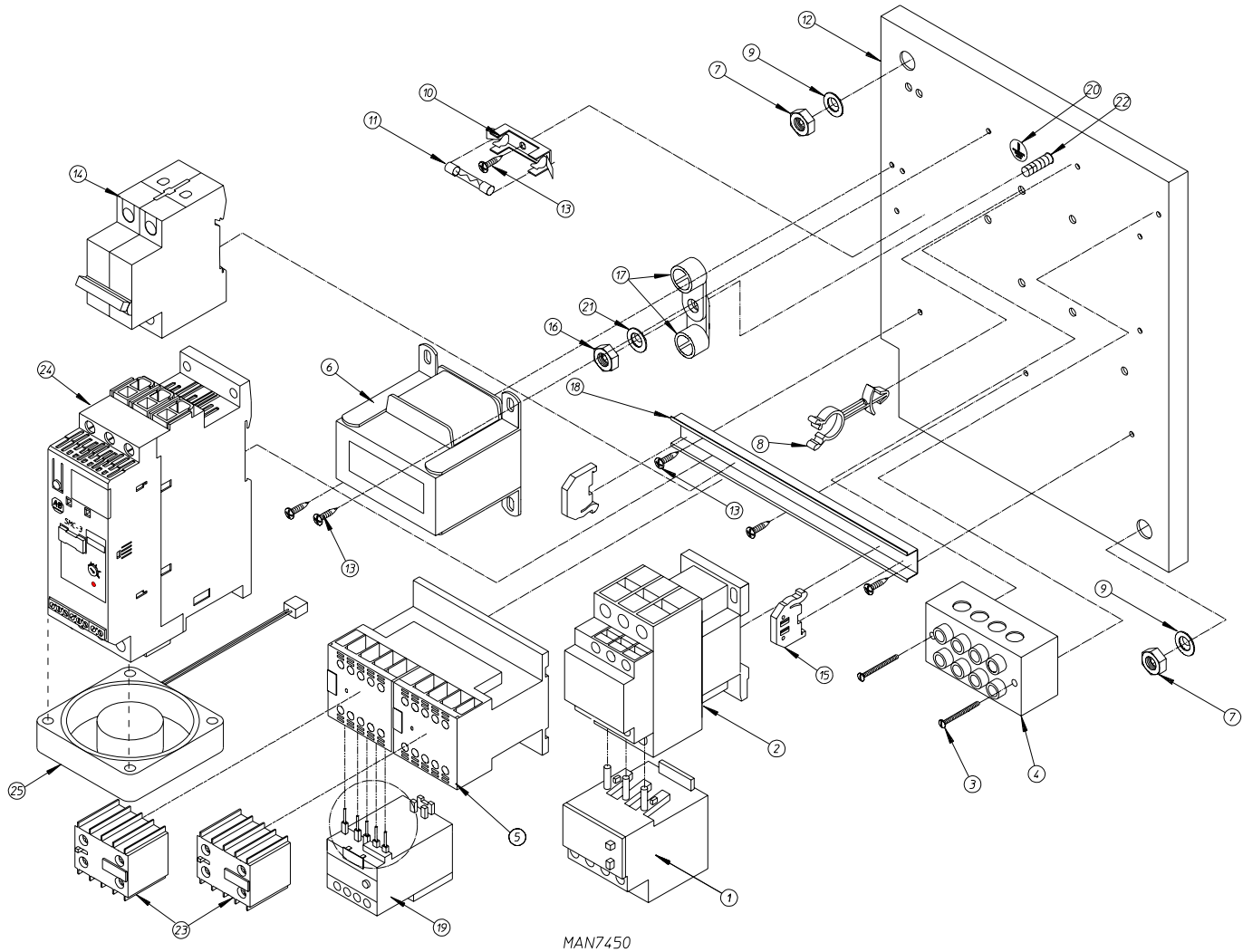
For 380-416 Volts for Models Mfd. as of January 26, 2006

<u>Illus. No.</u>	<u>Part No.</u>	<u>Qty.</u>	<u>Description</u>
1	801890*	1	5-27 Overload Assembly
2	131393*	1	18-amp Contactor
3	150539	2	#8 x 1-1/4" Phillips Pan Head Zinc Screw
4	120701	1	4-Position Terminal Block
5	131383*	1	Reversing Contactor with Coil Suppression
6	830211	1	380-416V Transformer Assembly
7	137015	1	Arc Suppressor with 3" Leads
8	152004	2	5/16-18 Hex Nut
9	121502	1	1/2" Wire Standoff
10	153002	2	5/16" Lock Washer
11	136008	1	Fuse Holder
12	136049	1	3/4-amp 3AG Slo-Blo Fuse
13	322346	1	Relay Panel
14	150301	7	#8-18 x 7/16" Phillips Head TEK Screw
15	120774	2	End Stop for Din Rail
16	152002	1	1/4-20 Hex Nut
17	121010	2	L70 14-4 Terminal Lug
18	120768	8-1/2"	Din Rail (sold by the inch)
19	801891*	1	1-5A Overload Assembly
20	112075	1	Ground Label
21	153021	1	1/4" Lock Washer
22	153525	1	1/4-20 x 1" Self-Clinching Stud
23	131391*	2	Auxiliary Contact Block 2 Normally Open
24	132276	1	Softstart 9A 100-240VAC Control
25	132282	1	Softstart Fan

* When replacing connecting components it may be necessary to replace both components. Contact factory for additional information.

Reversing Relay Panel Assembly

For 460-480 Volts for Models Mfd. as of February 1, 2006



Reversing Relay Panel Assembly

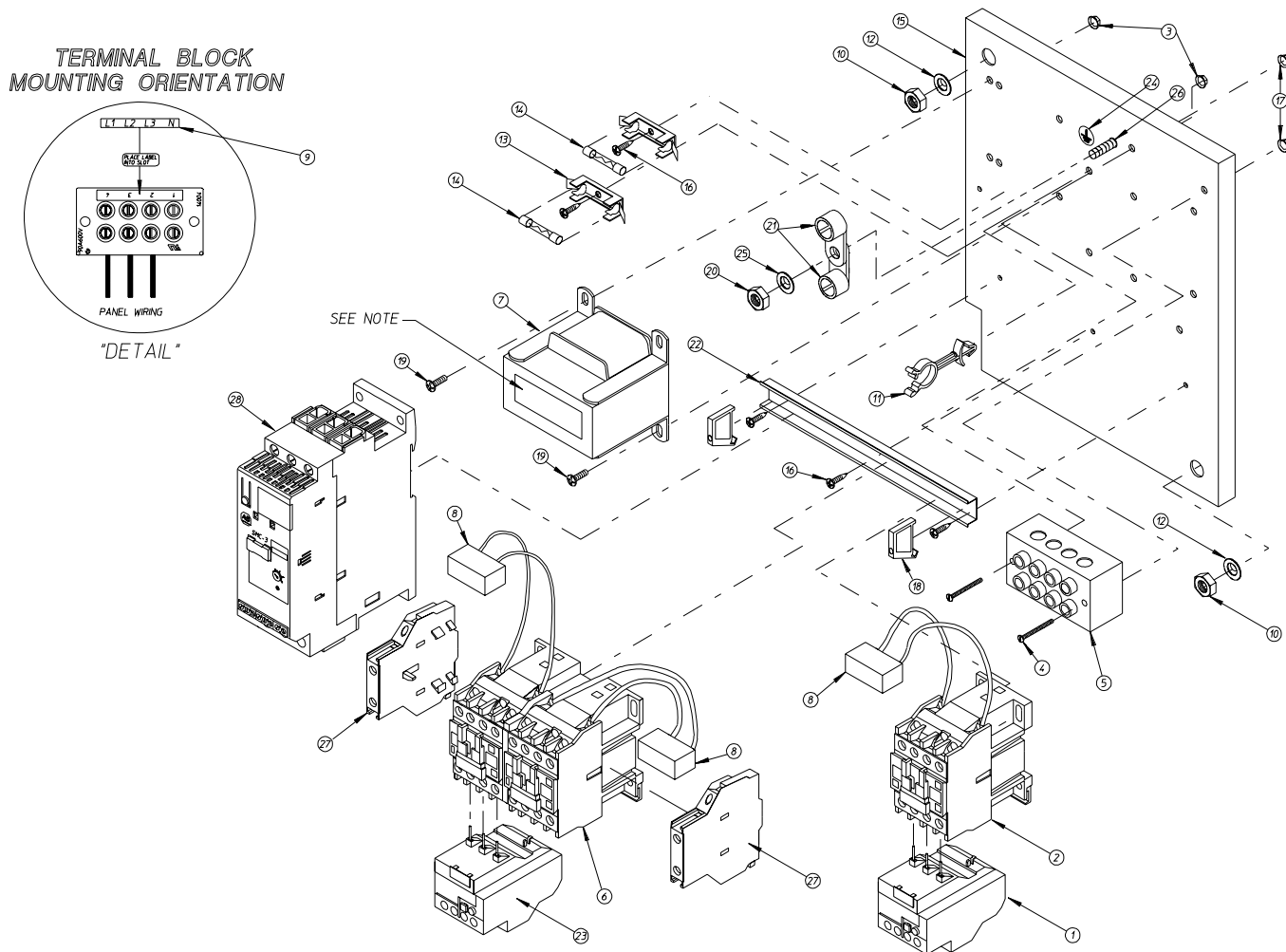
For 460-480 Volts for Models Mfd. as of February 1, 2006

<u>Illus. No.</u>	<u>Part No.</u>	<u>Qty.</u>	<u>Description</u>
1	801890*	1	5-27A Overload Assembly
2	131393*	1	18-amp Contactor
3	150539	2	#8 x 1-1/4" Phillips Pan Head Zinc Screw
4	120701	1	4-Position Terminal Block
5	131383*	1	Reversing Contactor
6	823252	1	460V Transformer Assembly
7	152004	2	5/16-18 Hex Nut
8	121502	1	1/2" Wire Standoff
9	153002	2	5/16" Lock Washer
10	136008	1	Fuse Holder
11	136057	1	1/2-amp 3AG Slo-Blo Fuse
12	322346	1	Relay Panel
13	150301	7	#8-18 x 7/16" Phillips Head TEK Screw
14	136113	1	Double Pole Class CC Fuse Holder
	136119	2	3/4-amp Time Delay CC Fuse
15	120774	2	End Stop for Din Rail
16	152002	1	1/4-20 Hex Nut
17	121010	2	L70 14-4 Terminal Lug
18	120768	8-1/2"	Din Rail (sold by the inch)
19	801891*	1	1-5A Overload Assembly
20	112075	1	Ground Label
21	153021	1	1/4" Lock Washer
22	153525	1	1/4-20 x 1" Self-Clinching Stud
23	131391*	2	Auxiliary Contact Block 2 Normally Open
24	132276	1	Softstart 9A 100-240VAC Control
25	132282	1	Softstart Fan

* When replacing connecting components it may be necessary to replace both components. Contact factory for additional information.

Microprocessor Reversing Contactor Mounting Panel Assembly

For 208-240 Volt Transformers for Models Mfd. between August 29, 2002 and January 24, 2006



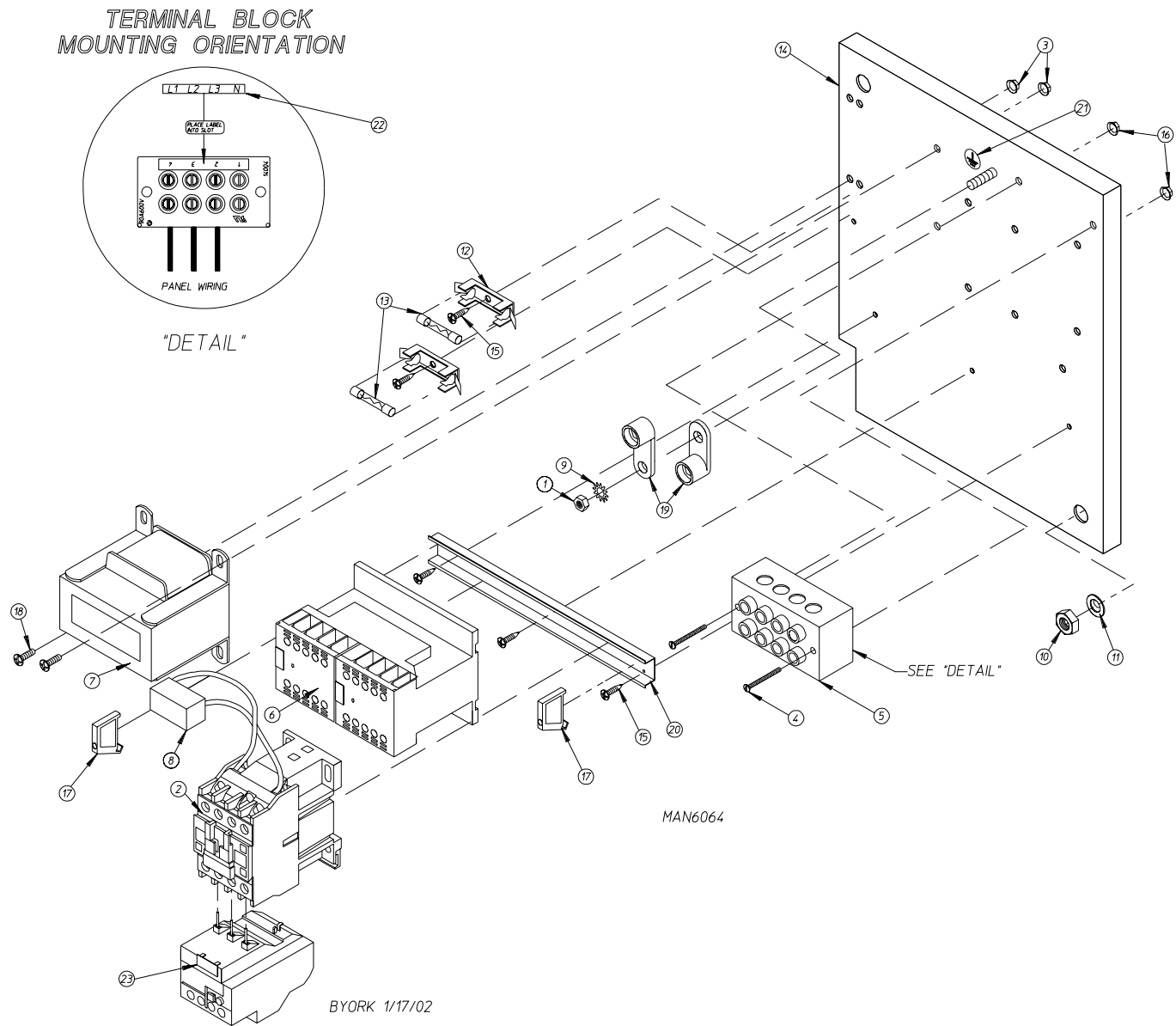
Microprocessor Reversing Contactor Mounting Panel Assembly

For 208-240 Volt Transformers for Models Mfd. between August 29, 2002 and January 24, 2006

<u>Illus. No.</u>	<u>Part No.</u>	<u>Qty.</u>	<u>Description</u>
1	132439	1	17-25A Overload
2	132465	1	10 hp Contactor
3	151001	2	#8-32 Pal Nut
4	150009	2	#6-32 x 1-1/2" Phillips Pan Head Machine Screw
5	120701	1	4-Position Terminal Block
6	132531	1	3 hp "D Line" Reversing Contactor
7	822745	1	208-240V Transformer Assembly
8	137015	3	Arc Suppressor with 3" Leads
9	112068	1	3ø Power Input Label
10	152004	2	5/16-18 Hex Nut
11	121502	1	1/2" Wire Standoff
12	153002	2	5/16" Lock Washer
13	136008	2	Fuse Holder
14	136057	2	1/2-amp 3AG (Slo-Blo) Fuse
15	332346	1	Relay Panel
16	150301	5	#8-18 x 7/16" Phillips Head TEK Screw
17	151000	2	#6-32 Pal Nut
18	120765	2	End Stop
19	150108	2	#8-32 x 1/2" Phillips Pan Head Machine Screw
20	152002	1	1/4-20 Hex Nut
21	121010	2	L-70 #14-4 Terminal Lug
22	120768	9-7/8"	35 x 15mm Din Rail
23	132467	1	9-13A Overload
24	112075	1	Ground Label
25	153021	1	1/4" Lock Washer
26	153525	1	1/4-20 x 1" Self-Clinching Stud
27	132383	2	Auxiliary Contact Block 2 Normally Open
28	132276	1	Softstart 9A 100-240 VAC Control
—	822811	1	Relay Panel Wiring with Softstart ... Not Illustrated
—	825267	1	Drive and Blower Motor Contactor Wiring ... Not Illustrated

Microprocessor Reversing Contactor Mounting Panel Assembly

For 208-240 Volt Transformers for Models Mfd. prior to August 29, 2002



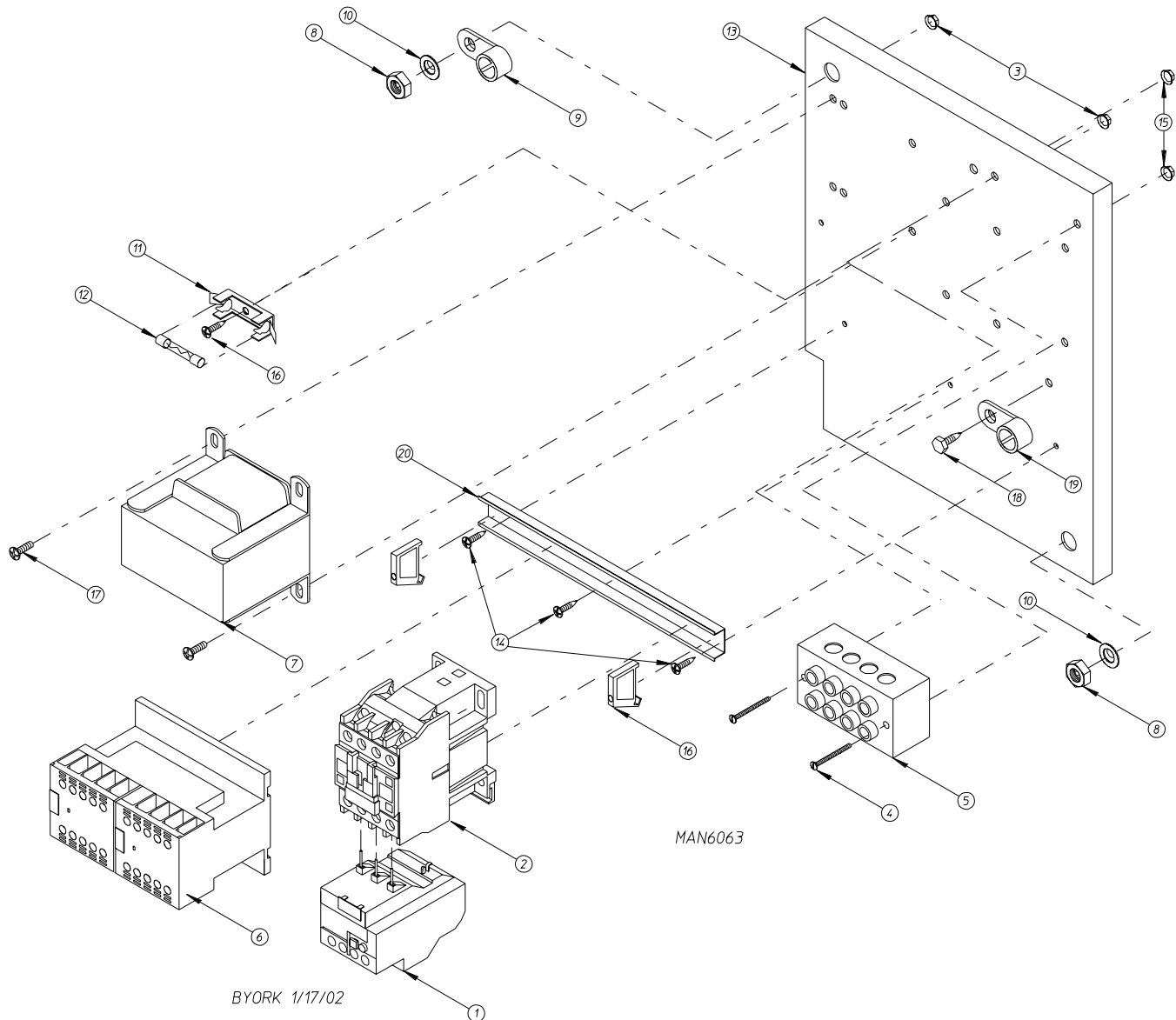
Microprocessor Reversing Contactor Mounting Panel Assembly

For 208-240 Volt Transformers for Models Mfd. prior to August 29, 2002

<u>Illus. No.</u>	<u>Part No.</u>	<u>Qty.</u>	<u>Description</u>
1	152002	1	1/4-20 Hex Nut
2	132465	1	3 hp Contactor – 24 VAC
3	151001	2	#8-32 Pal Nut
4	150009	2	#6-32 x 1-1/4" Phillips Round Head Machine Screw
5	120701	1	4-Position Power Distribution Block
6	132497	1	Reversing Contactor – 24 VAC
7	822745	1	208-240V Transformer Assembly
8	137015	1	Arc Suppressor Board
9	153021	1	1/4" Star Washer
10	152004	1	5/16-18 Hex Nut
11	153002	1	5/16" Lock Washer
12	136008	2	Fuse Block / Holder
13	136057	2	1/2-amp (Slo-Blo) Fuse
14	332346	1	Contactor / Relay Mounting Panel
15	150301	5	#8-18 x 7/16" Phillips Pan Head TEK Screw
16	151000	2	#6-32 Pal Nut
17	120765	2	End Stop / Bracket
18	150108	2	#8-32 x 1/2" Pan Head Machine Screw
19	121010	1	L-70 Ground Lug
20	120768	7-3/4"	Din Mounting Rail (sold by the inch)
21	112075	1	Ground Label
22	112068	1	3ø Power Input Label
23	132439	1	Overload
—	825267	1	Contactor Wiring ... Not Illustrated
—	829053	1	Relay Panel Wiring ... Not Illustrated

Microprocessor Reversing Contactor Mounting Panel Assembly

For 380-416 Volt Transformers for Models Mfd. prior to August 29, 2002



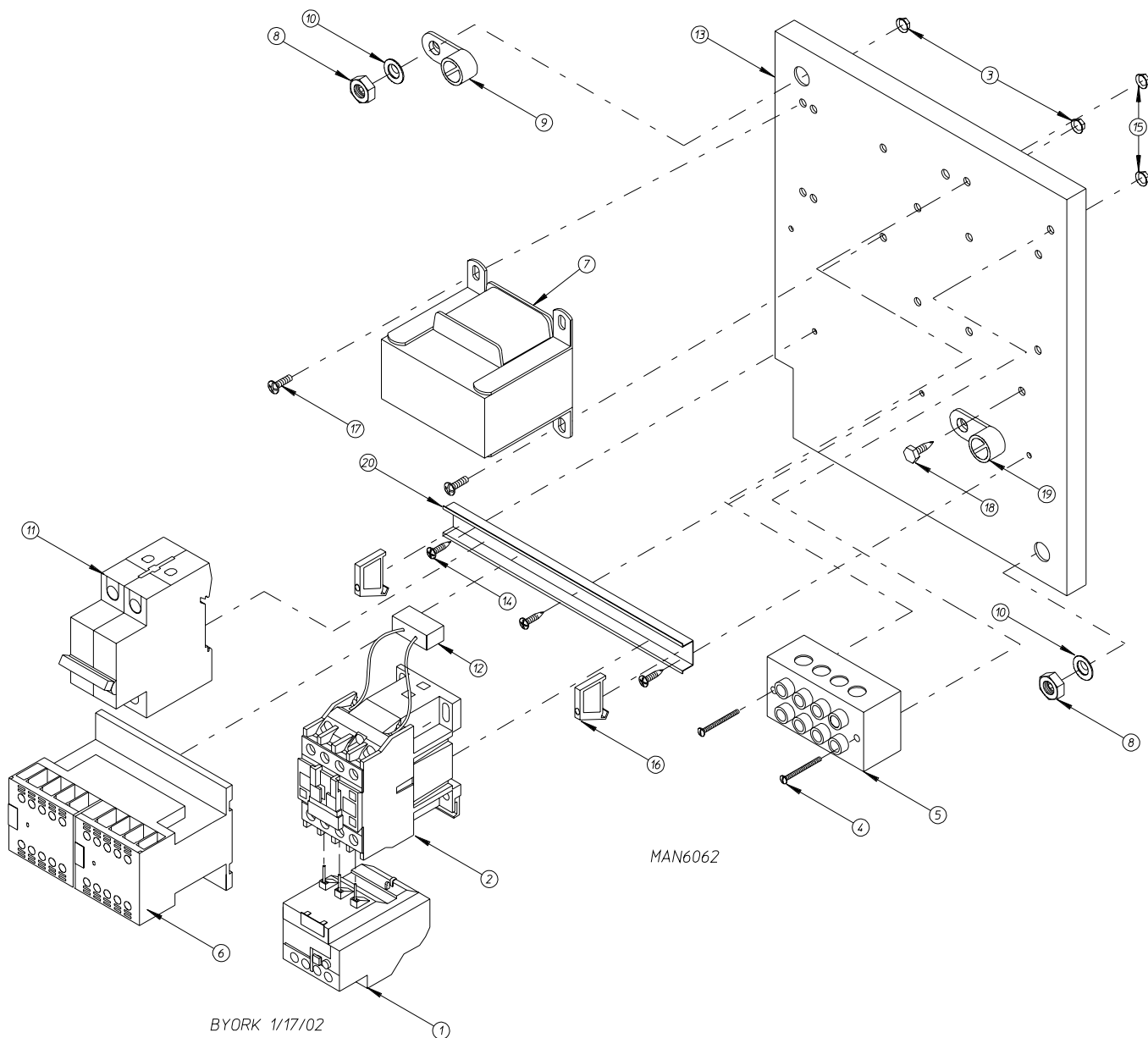
Microprocessor Reversing Contactor Mounting Panel Assembly

For 380-416 Volt Transformers for Models Mfd. prior to August 29, 2002

<u>Illus. No.</u>	<u>Part No.</u>	<u>Qty.</u>	<u>Description</u>
1	132467	1	9-13A Overload
2	132465	1	10 hp Contactor – 24 VAC
3	151001	2	#8-32 Pal Nut
4	150009	2	#6-32 x 1-1/2" Phillips Round Head Machine Screw
5	120701	1	4-Position Power Distribution Block
6	132497	1	"Kline" Reversing Contactor
7	801580	1	Transformer (380-416 volt / 3ø)
8	152004	2	5/16-18 Hex Nut
9	121012	1	Ground Lug
10	153002	2	5/16" Lock Washer
11	136008	1	Fuse Block / Holder
12	136057	1	1/2-amp (Slo-Blo) Fuse
13	332346	1	Contactor / Relay Mounting Panel
14	150301	4	#8-18 x 7/16" Phillips Pan Head TEK Screw
15	151000	2	#6-32 Pal Nut
16	120765	2	End Stop / Bracket
17	150108	2	#8-32 x 1/2" Pan Head Machine Screw
18	150297	1	#10 x 1/2" Hex Washer TEK Screw
19	121010	1	L-70 Ground Lug
20	120768	7-3/4"	Din Mounting Rail (sold by the inch)
—	830180	1	Relay Panel Wiring ... Not Illustrated
—	825267	1	Drive / Blower Motor Contactor Wiring ... Not Illustrated

Microprocessor Reversing Contactor Mounting Panel Assembly

For 460-480 Volt Transformers for Models Mfd. prior to August 29, 2002



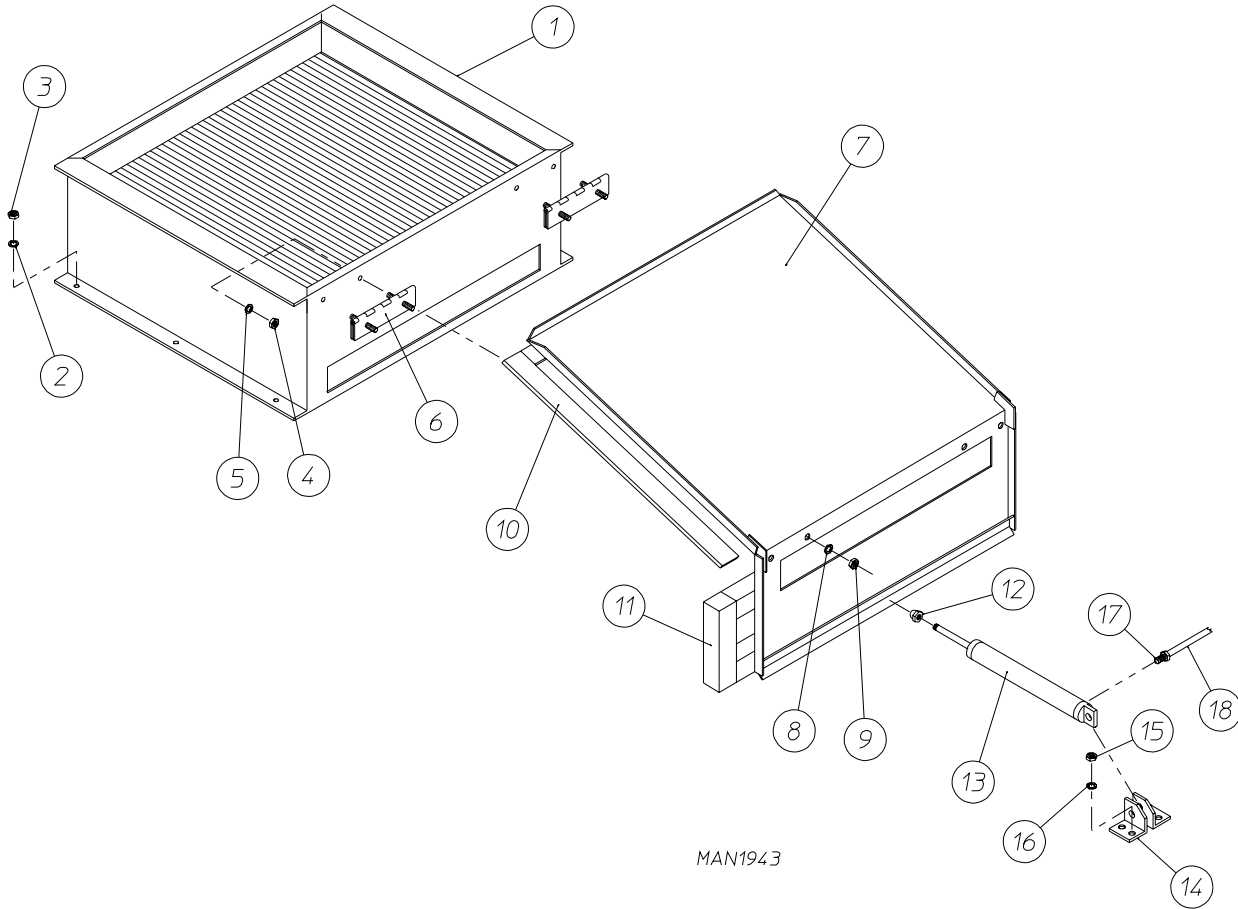
Microprocessor Reversing Contactor Mounting Panel Assembly

For 460-480 Volt Transformers for Models Mfd. prior to August 29, 2002

<u>Illus. No.</u>	<u>Part No.</u>	<u>Qty.</u>	<u>Description</u>
1	132467	1	9-13A Overload
2	132465	1	10 hp Contactor – 24 VAC
3	151001	2	#8-32 Pal Nut
4	150009	2	#6-32 x 1-1/2" Phillips Round Head Machine Screw
5	120701	1	4-Position Terminal Block
6	132497	1	"Kline" Reversing Contactor
7	830193	1	460-480V Transformer Assembly
8	152004	2	5/16-18 Hex Nut
9	121012	1	Ground Lug
10	153002	2	5/16" Lock Washer
11	135501	1	2-Pole 1-amp Circuit Breaker
12	137015	1	Arc Suppressor
13	332346	1	Relay Panel
14	150301	4	#8-18 x 7/16" Phillips Pan Head TEK Screw
15	151000	2	#6-32 Pal Nut
16	120765	2	End Stop / Bracket
17	150108	2	#8-32 x 1/2" Pan Head Machine Screw
18	150297	1	#10 x 1/2" Hex Washer TEK Screw
19	121010	1	L-70 Ground Lug
20	120768	7-3/4"	Din Mounting Rail (sold by the inch)
—	830192	1	Relay Panel Wiring ... Not Illustrated
—	825267	1	Drive / Blower Motor Contactor Wiring ... Not Illustrated

Steam Damper Assembly

For Steam Models ONLY



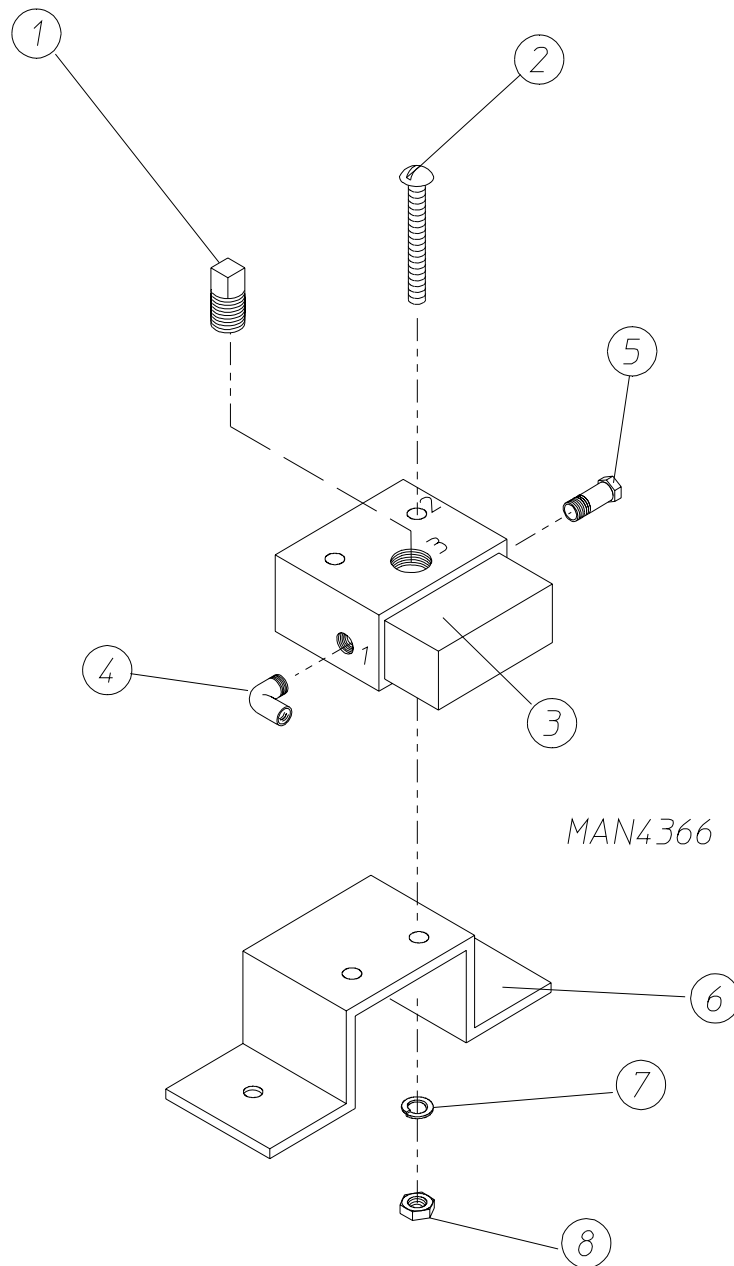
MAN1943

Illus. No.	Part No.	Qty.	Description
1	165078	1	Steam Coil (for models mfd. as of November 24, 2009)
	165017	1	Steam Coil (for models mfd. prior to November 24, 2009)
2	153002	6	5/16" Lock Washer
3	152004	6	5/16-18 Hex Nut
4	152002	4	1/4-20 Hex Nut
5	153007	4	1/4" Lock Washer
6	820321	2	Steam Damper Hinge Assembly
7	820994	1	Steam Damper Assembly (includes illus. nos. 7, 10, and 11)
8	153007	4	1/4" Lock Washer
9	152002	4	1/4-20 Hex Nut
10	115995	96	Steam Damper Gasket (sold by the inch)
11	102350	2	Steam Damper Foam (68-1/2" length)
12	151007	1	7/16-20 Stainless Steel Acorn Nut
13	100499	1	1-1/2" Bore x 3" Stroke Piston
14	100500	1	Piston Support Bracket
15	152002	4	1/4-20 Hex Nut
16	153007	4	1/4" Lock Washer
17	100472	1	1/4" x 1/8" Connector
18	143110	1	1/4" Tubing (sold by the foot)

(refer to Top Console Assembly on page 45)

Pneumatic Valve Assembly

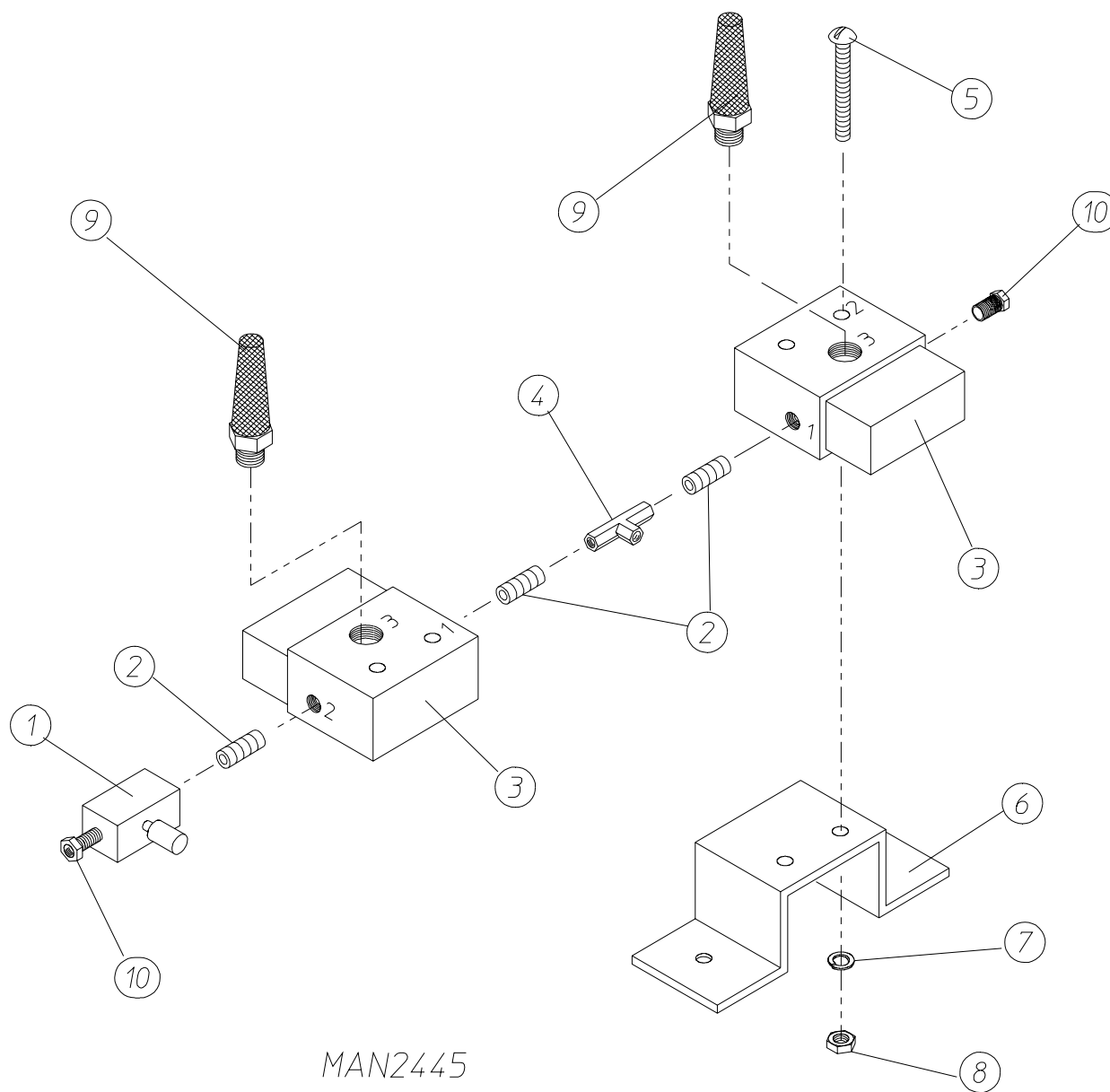
For Gas Models ONLY



Illus. No.	Part No.	Qty.	Description
1	143250	1	1/8" M.P.T. Brass Plug
2	150002	1	#6-32 x 1" Slotted Machine Screw
3	100498	1	3-Way Micro Valve ONLY – 24 VAC
	821105	1	Pneumatic Valve Assembly Complete (includes illus. nos. 1 through 8)
4	143149	1	1/4" Poly x 1/8" M.P.T. x 90° Elbow
5	100472	1	1/4" x 1/8" M.P.T. Male Connector
6	330987	1	Micro Valve Support Bracket
7	153010	1	#6 Star Washer
8	152000	1	#6-32 Hex Nut

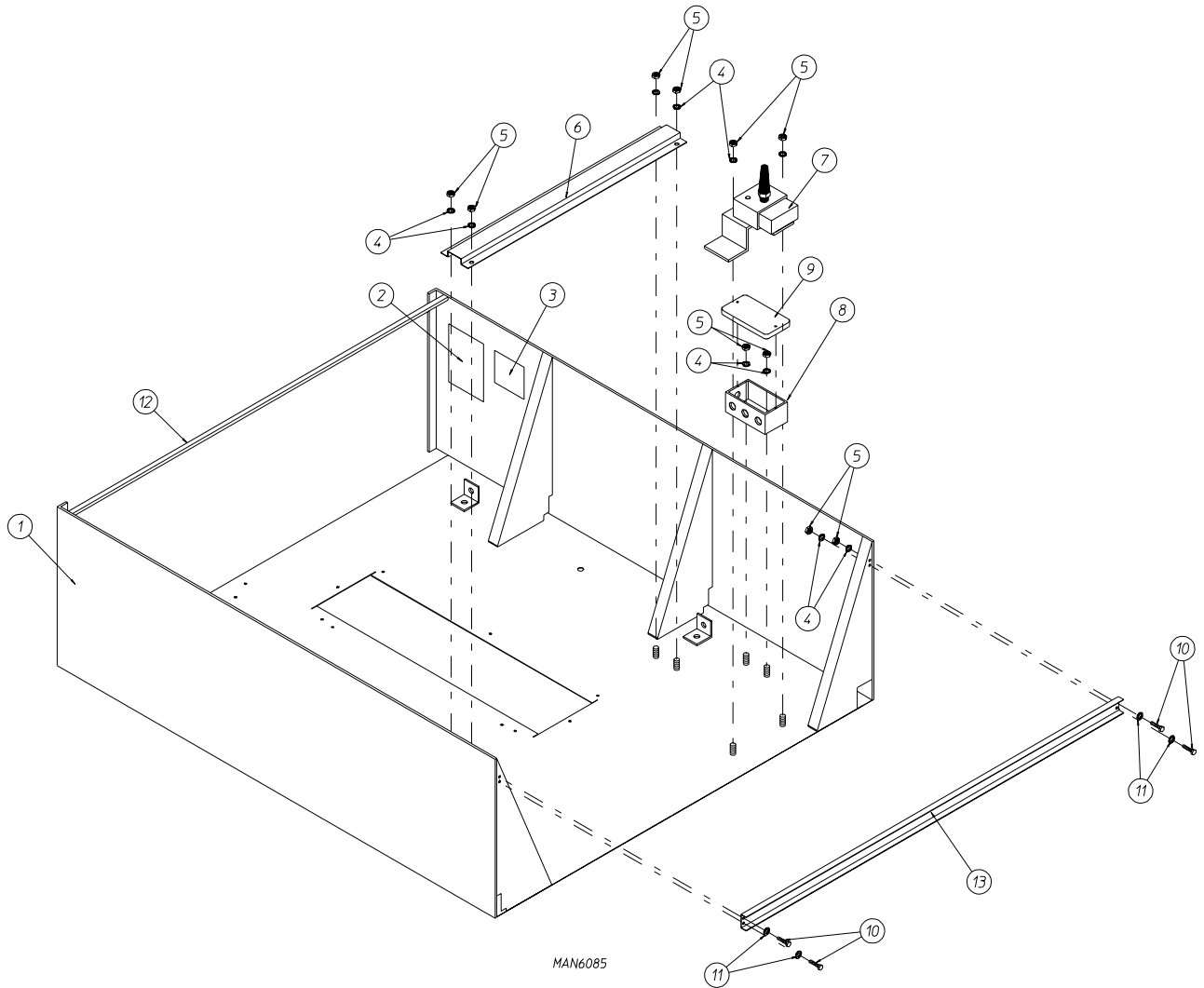
Pneumatic Valve Assembly

For Steam Models ONLY



MAN2445

Illus. No.	Part No.	Qty.	Description
1	100496	1	1/8" Needle Valve
2	143238	3	1/8" Close Nipple
3	100498	2	3-Way Micro Valve ONLY – 24 VAC
	821104	1	Pneumatic Valve Assembly Complete (includes illus. nos. 1 through 8)
4	143223	1	1/8" F.P.T. Brass Tee
5	150002	2	#6-32 x 1" Slotted Machine Screw
6	330987	1	Micro Valve Support Bracket
7	153010	2	#6 Star Washer
8	152000	2	#6-32 Hex Nut
9	100520	2	1/8" N.P.T. Silencer (muffler)
10	100472	2	1/4" x 1/8" Connector

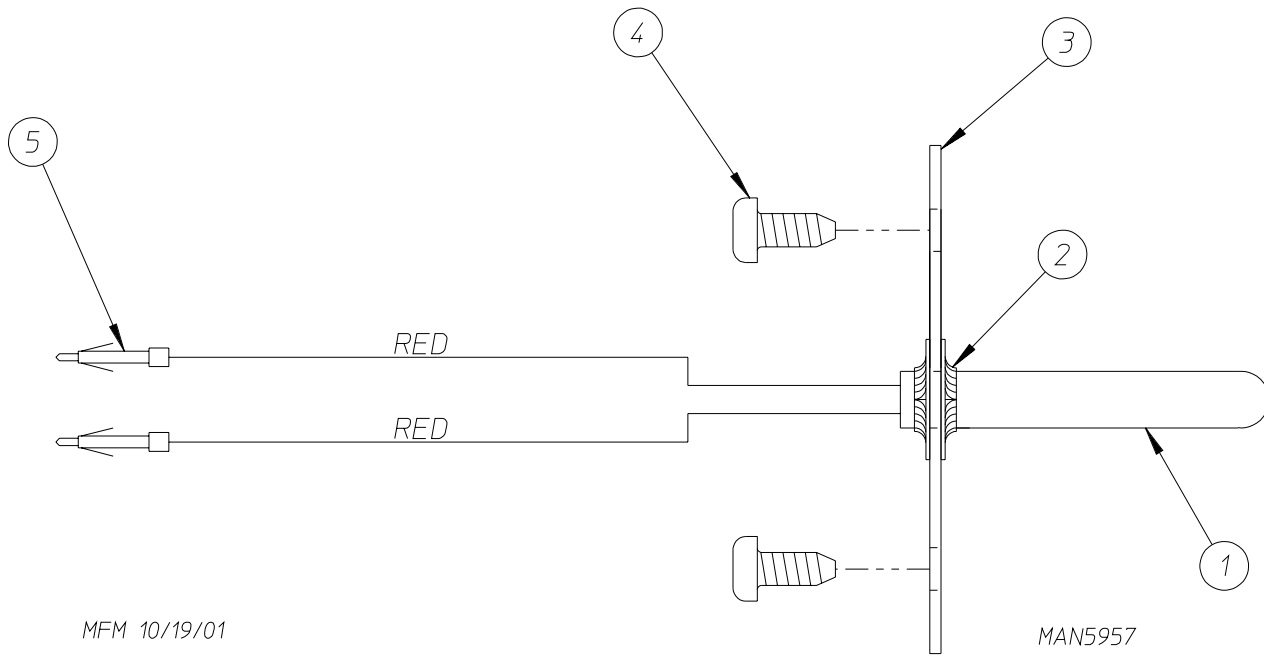


BYORK 2/13/02

<u>Illus. No.</u>	<u>Part No.</u>	<u>Qty.</u>	<u>Description</u>
1	835256*	1	Top Console Assembly ONLY (for gas models Only)
	835369*	1	Top Console Assembly ONLY (for steam models Only)
2	114521	1	"Phase 7 Non-Coin Program Location Summary" Label (for microprocessor models Only)
3	_____	1	Dryer Data Label (not for resale by ADC)
4	153007	12	1/4" Lock Washer
5	152002	12	1/4-20 Hex Nut
6	332323	1	32" Wire Channel
7	821105	1	Pneumatic Valve Assembly ONLY (for gas models Only) (refer to Pneumatic Valve Assembly on page 43)
	821104	1	Pneumatic Valve Assembly ONLY (for steam models Only) (refer to Pneumatic Valve Assembly on page 44)
8	121104	1	2" x 4" Junction Box
9	121105	1	Junction Box Cover
10	150615	1	1/4-20 x 3/4" Bolt
11	153018	4	1/4" Flat Washer
12	332186	1	Control Door Hinge Channel
13	332132	1	Corner Gusset Brace

* Specify color when ordering.

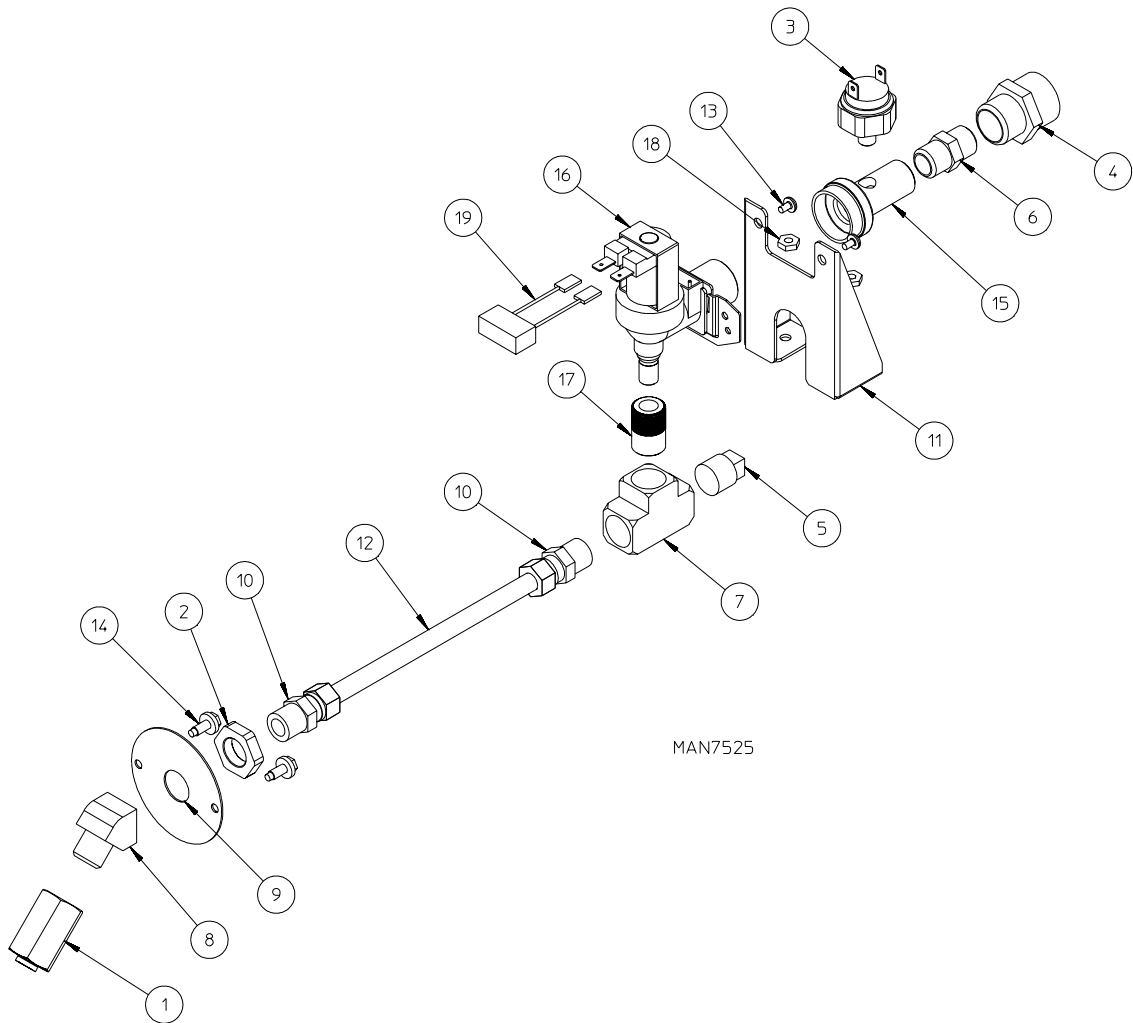
Fire Suppression System Temperature Probe Assembly



<u>Illus. No.</u>	<u>Part No.</u>	<u>Qty.</u>	<u>Description</u>
1	822752	1	Fire Suppression System Temperature Probe Assembly (includes illus. nos. 1 through 5)
2	154007	2	Push-On Fastener
3	390390	1	Sensor Bracket
4	150301	2	#8-18 Phillips Pan Head TEK Screw
5	122647	1	Connector ... Not Illustrated (does not include pins)
	122700	2	Pin

Fire Suppression System Solenoid Assembly

For Models Mfd. as of September 23, 2004

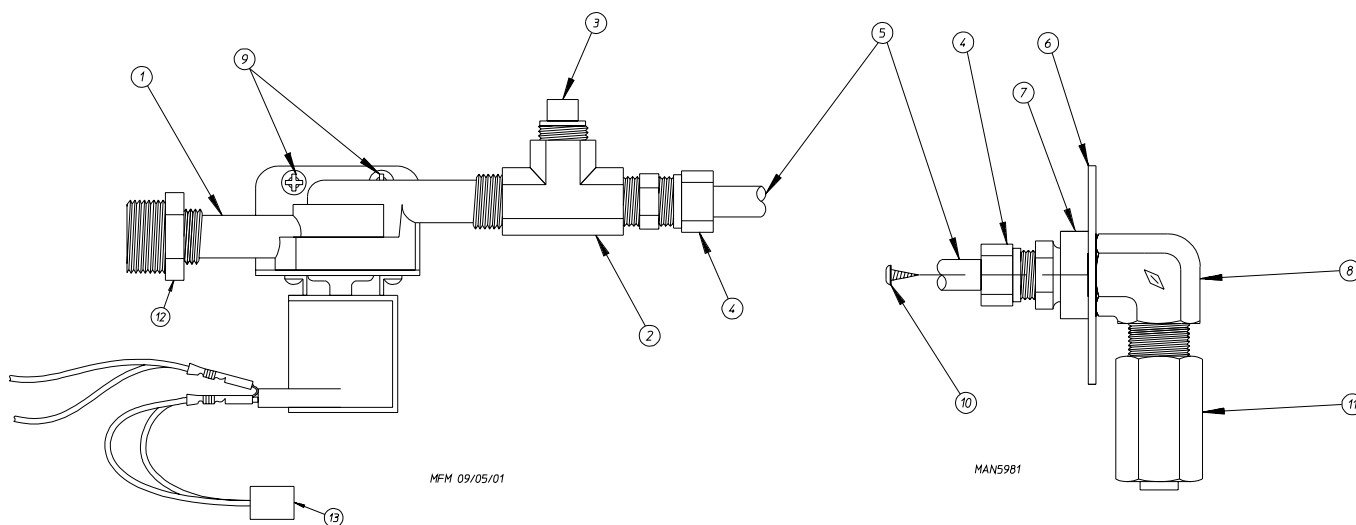


MAN7525

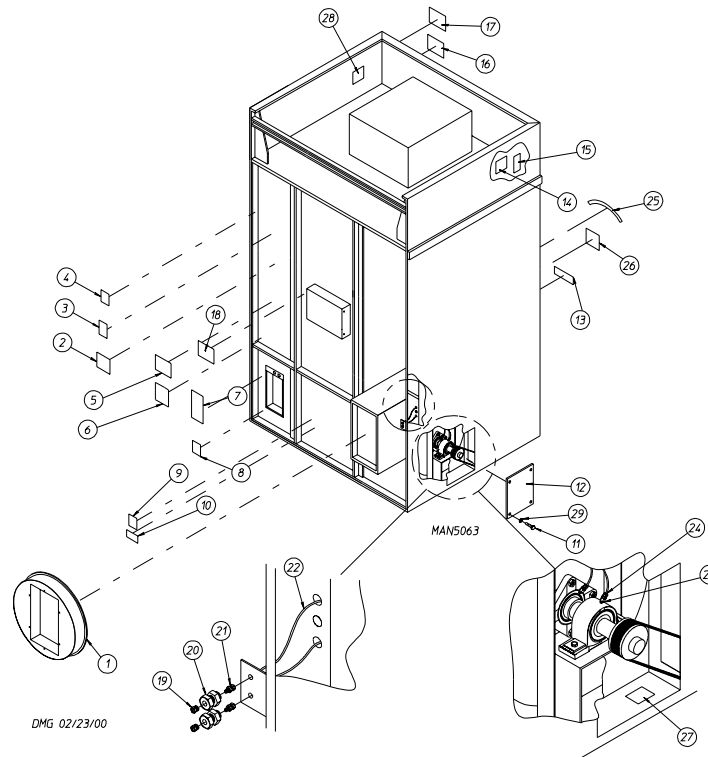
<u>Illus. No.</u>	<u>Part No.</u>	<u>Qty.</u>	<u>Description</u>
1	143581	1	Fire Suppression System 3 GPM 3/8" N.P.T. Spray Nozzle
2	143303	1	3/8" N.P.T. Brass Lock Nut
3	136987	1	Water Jet Pressure Switch
4	143025	1	3/4"-11.5 NH x 3/8" N.P.T. Nylon Hose Adapter
5	143251	1	3/8" M.P.T. Brass Plug
6	182579	1	3/8" M.P.T. x 3/8" M.P.T. Brass Hex Nipple
7	143220	1	3/8" F.P.T. Brass Tee
8	143301	1	3/8" Brass 45° Street Elbow
9	311588	1	Fire Suppression System Sprinkler Head Mounting Plate
10	143208	2	3/8" Comp x 3/8" M.P.T. Brass Connector
11	311587	1	Medium Dryer Fire Suppression System Valve Bracket
12	143108	1	20" Stainless Steel Flex Hose with 3/8" Compression
13	154338	2	M4 x 6mm Phillips Head Slotted Machine Screw
14	150309	2	#10-16 x 1/2" Hex Head TEK Crimptite
15	143182	1	3/4" GHT x 1/8" x 3/8" N.P.T. Brass Tee
16	165119	1	Fire Suppression System Water Inlet Valve
17	143183	1	7/16-20 x 3/8" N.P.T. Brass Adapter 2
18	152001	2	#8-32 3/8" Hex Nut
19	824081	1	R.C. Network Assembly

Fire Suppression System Solenoid Assembly

For Models Mfd. prior to September 23, 2004



Illus. No.	Part No.	Qty.	Description
1	165114	1	Fire Suppression System Solenoid Valve 24V 50/60 Hz
2	143220	1	3/8" F.P.T. Brass Tee
3	143251	1	3/8" M.P.T. Brass Plug
4	143208	2	3/8" Comp x 3/8" M.P.T. Brass Connector
5	143099	6'	3/8" OD x 0.035 Wall Copper Tubing (sold by the foot)
6	311588	1	Sprinkler Head Mounting Plate
7	143303	1	3/8" N.P.T. Brass Locknut
8	143155	1	3/8" Brass Elbow 90°
9	150430	2	#10 x 1/2" Self-Drilling Screw
10	150301	2	#8-18 x 7/16" TEK Screw
11	143581	1	3 GPM 3/8" F.P.T. Spray Nozzle
12	142888	1	1/2" to 3/8" Bushing for Fire Suppression System Valve
13	824828	1	Arc Suppressor



DMG 02/23/00

Illus. No.	Part No.	Qty.	Description
1	821793	1	Square Duct to 20" Round Duct Transition Piece Assembly with Damper
	821956	1	Square Duct to 20" Round Duct Transition Piece Assembly
	821720	1	Square Duct to 18" Round Duct Transition Piece Assembly with Damper
	821092	1	Square Duct to 18" Round Duct Transition Piece Assembly
2	_____	1	Wiring Diagram for Dryer (contact factory with model and serial numbers)
3	112046	1	"Computer Ground" Label
4	114005	1	"Danger - Hot" Label
5	112519	1	"Routine Maintenance" Label
6	114044	1	"High Voltage" Label
7	114007	1	"Danger - High Voltage" Label
8	112014	1	"High Voltage" Label
9	114008	1	"Warning - Fumes" Label
10	114001	1	"Caution - Exhaust / Lint Screen" Label
11	150512	4	1/4-20 x 1/2" Hex Head Machine Bolt
12	332309	1	Side Access Panel
13	112280	1	"Clean Lint Screen" Label
14	112017	1	"Address" Label (not for resale)
15	_____	1	"Serial Number" Label (not for resale)
16	_____	1	Wiring Diagram (contact factory with specific dryer serial number)
17	114521	1	"Phase 7 Non-Coin Program Location" Label
18	114093	1	"Important Manual Reset Hi-Limit" Label
19	170511	2	1/8" M.P.T. Zirc (grease) Fitting
20	143164	2	1/8" F.P.T. Bulkhead Fitting
21	100472	2	1/4" x 1/8" M.P.T. Male Connector
22	143115	4	1/4" Nylo-Seal Tube
23	100472	2	1/4" x 1/8" M.P.T. Male Connector
24	143246	2	1/4-28 x 18" F.P.T. Fitting
25	114095	1	"Do Not Dry Mop Heads" Label
26	114006	1	"WARNING - Fire Hazard" Label
27	114077	1	"Grease Instruction" Label
28	114093	1	"Important Manual Reset Hi-Limit" Label
29	153007	4	1/4" Lock Washer

