

ML-190

Parts Manual

Phase 7

American Dryer Corporation
88 Currant Road
Fall River MA 02720-4781 USA
Telephone: +1 (508) 678-9000 / Fax: +1 (508) 678-9447
e-mail: techsupport@amdry.com

www.adclaundry.com

Retain This Manual In A Safe Place For Future Reference

American Dryer Corporation products embody advanced concepts in engineering, design, and safety. If this product is properly maintained, it will provide many years of safe, efficient, and trouble free operation.

ONLY qualified technicians should service this equipment.

OBSERVE ALL SAFETY PRECAUTIONS displayed on the equipment or specified in the installation manual included with the dryer.

The following “**FOR YOUR SAFETY**” caution must be posted near the dryer in a prominent location.

FOR YOUR SAFETY

Do not store or use gasoline or other flammable vapors and liquids in the vicinity of this or any other appliance.

POUR VOTRE SÉCURITÉ

Ne pas entreposer ni utiliser d'essence ni d'autres vapeurs ou liquides inflammables à proximité de cet appareil ou de tout autre appareil.

We have tried to make this manual as complete as possible and hope you will find it useful. ADC reserves the right to make changes from time to time, without notice or obligation, in prices, specifications, colors, and material, and to change or discontinue models.

Important

For your convenience, log the following information:

DATE OF PURCHASE _____ MODEL NO. **ML-190 PH7**

RESELLER'S NAME _____

Serial Number(s) _____

Replacement parts can be obtained from your reseller or the ADC factory. When ordering replacement parts from the factory, you can FAX your order to ADC at (508) 678-9447 or telephone your order directly to the ADC Parts Department at (508) 678-9000. Please specify the dryer model number and serial number in addition to the description and part number, so that your order is processed accurately and promptly.

The illustrations on the following pages may not depict your particular dryer exactly. The illustrations are a composite of the various dryer models. Be sure to check the descriptions of the parts thoroughly before ordering.

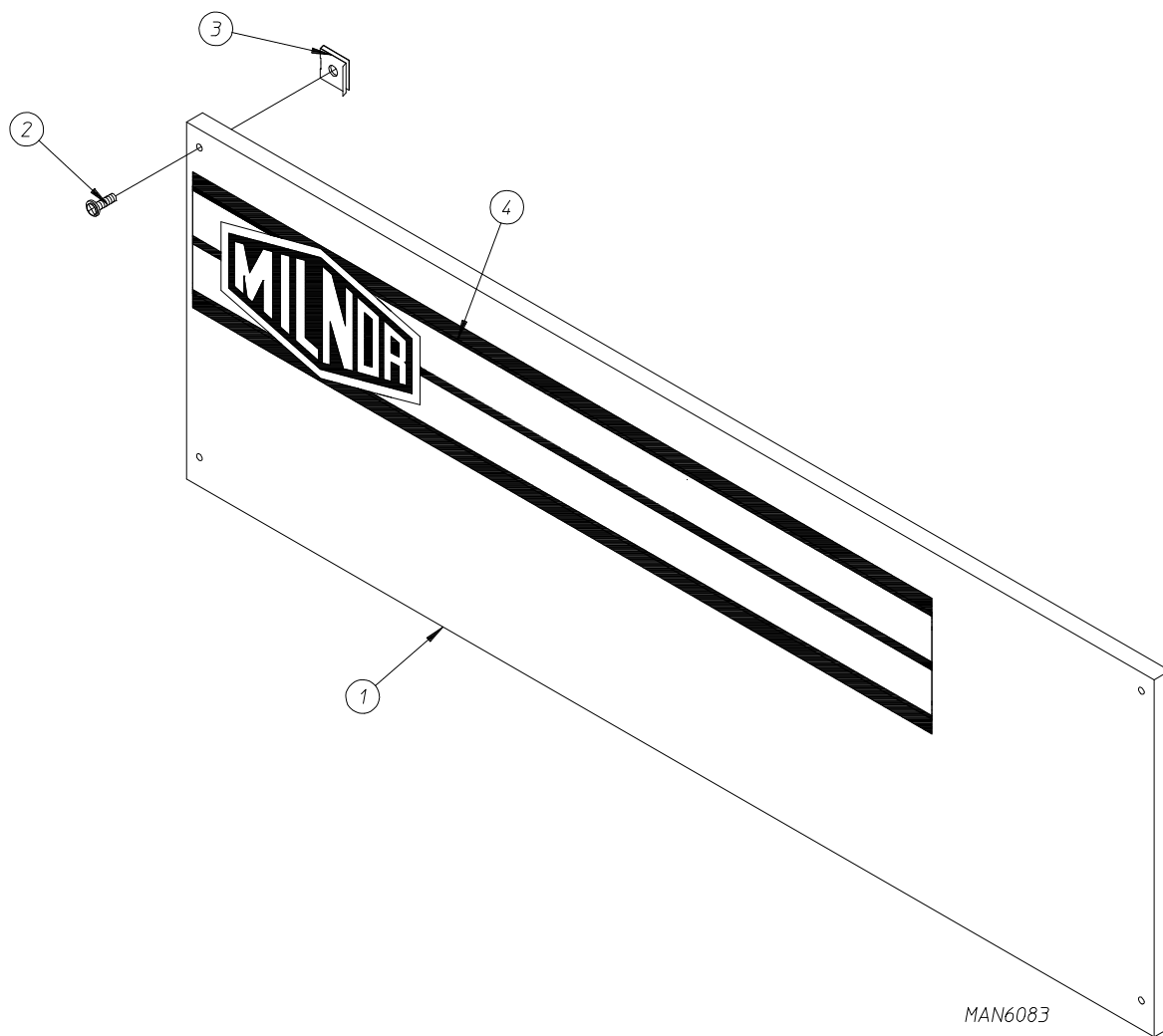
“IMPORTANT NOTE TO PURCHASER”

Information must be obtained from your local gas supplier on the instructions to be followed if the user smells gas. These instructions must be posted in a prominent location near the dryer.

Table of Contents

Control Door Assembly	4
Phase 7 Non-Coin Microprocessor Control Panel Assembly	5
Main Door Assembly for Models Mfd. as of September 10, 2005	6
Front Panel for Models Mfd. as of September 10, 2005	7
Front Panel / Main Door Assemblies for Models Mfd. prior to September 10, 2005	8
Main Door Switch	10
Tumbler Assembly	11
Lint Door Assembly	12
Lint Drawer / Lint Drawer Switch Box Assemblies for Models Mfd. as of March 1, 2003	13
Lint Drawer / Lint Drawer Switch Box Assemblies for Models Mfd. prior to March 1, 2003	15
Rotational Sensor Assembly	16
Idler Shaft Assembly	17
Drive Shaft Assembly	18
Speed Reducer Shaft Assembly	19
Microprocessor Temperature Sensor Bracket Assembly	20
Totally Enclosed, Non-Venting Drive Motor Assembly	21
Blower Motor Mount Assembly	22
Fan (Squirrel Cage) Shaft Mount Assembly	23
Direct Spark Ignition Burner Assembly	24
Sail Switch Assembly	26
Steam Damper Assembly	27
Top Console Assembly	28
Pneumatic Valve Assembly for Gas Models Only	29
Pneumatic Valve Assembly for Steam Models Only	30
Air Jet Assembly	31
Reversing Relay Panel Assembly for 208-240 Volts for Models Mfd. as of January 25, 2006	32
Reversing Relay Panel Assembly for 380-416 Volts for Models Mfd. as of January 26, 2006	34
Reversing Relay Panel Assembly for 460-480 Volts for Models Mfd. as of February 1, 2006	36
Microprocessor Reversing Contactor Mounting Panel Assembly for 208-240 Volt Transformers for Models Mfd. between August 29, 2002 and January 24, 2006	38
Microprocessor Reversing Contactor Mounting Panel Assembly for 208-240 Volt Transformers for Models Mfd. prior to August 29, 2002	40
Microprocessor Reversing Contactor Mounting Panel Assembly for 380-416 Volt Transformers for Models Mfd. prior to August 29, 2002	42
Microprocessor Reversing Contactor Mounting Panel Assembly for 460-480 Volt Transformers for Models Mfd. prior to August 29, 2002	44
Fire Suppression System Temperature Probe Assembly	46
Fire Suppression System Solenoid Assembly for Models Mfd. as of September 23, 2004	47
Fire Suppression System Solenoid Assembly for Models Mfd. prior to September 23, 2004	48
Back Guard Assemblies	49

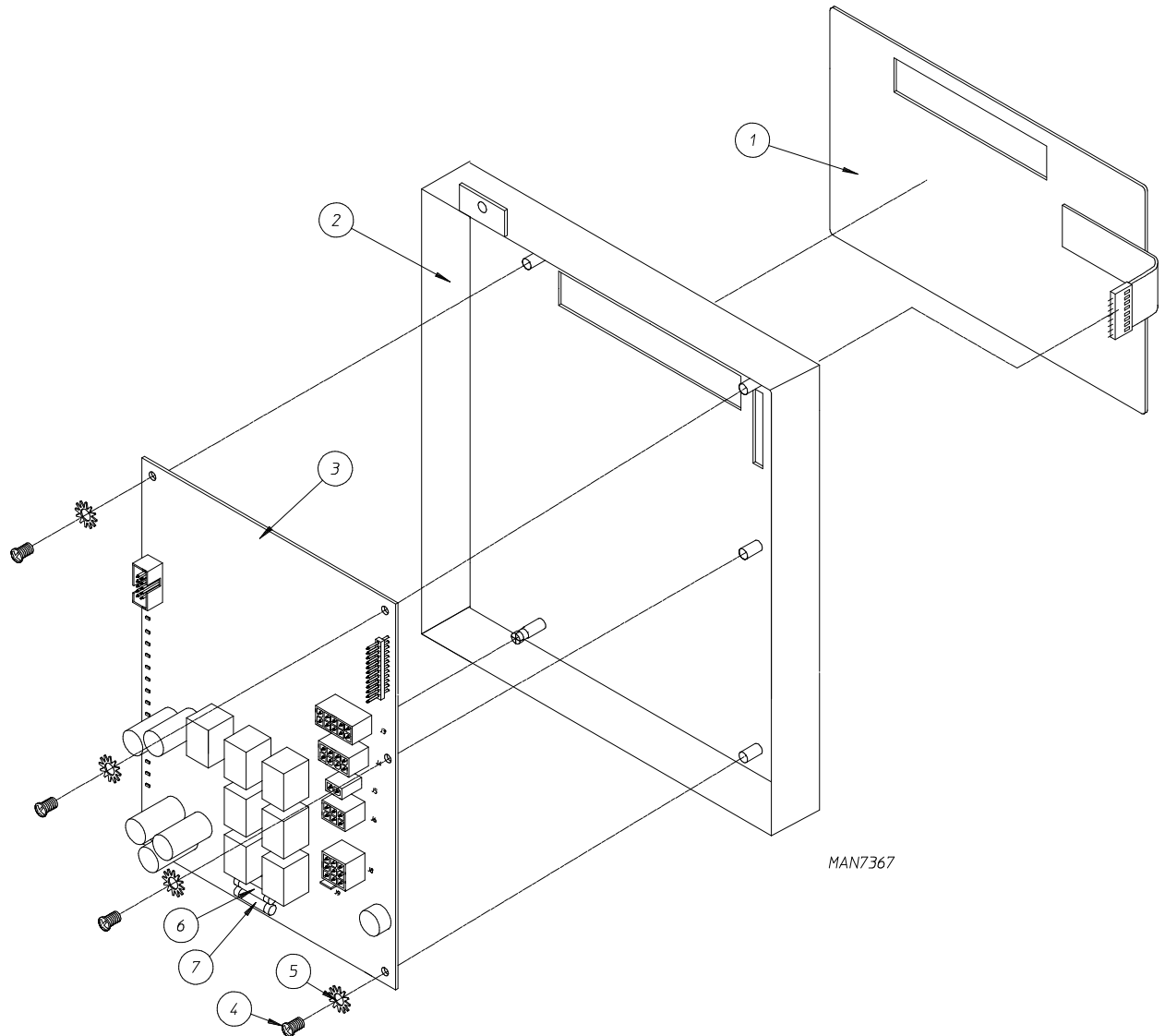
Control Door Assembly



<u>Illus. No.</u>	<u>Part No.</u>	<u>Qty.</u>	<u>Description</u>
1*	882364	1	Phase 7 Control Door
2	150321	4	#10-32 x 1/2" Phillips Machine Screw
3	154011	4	#10-32 Multi-Thread U-Nut
4	112372	1	Milnor Logo

* Specify color when ordering.

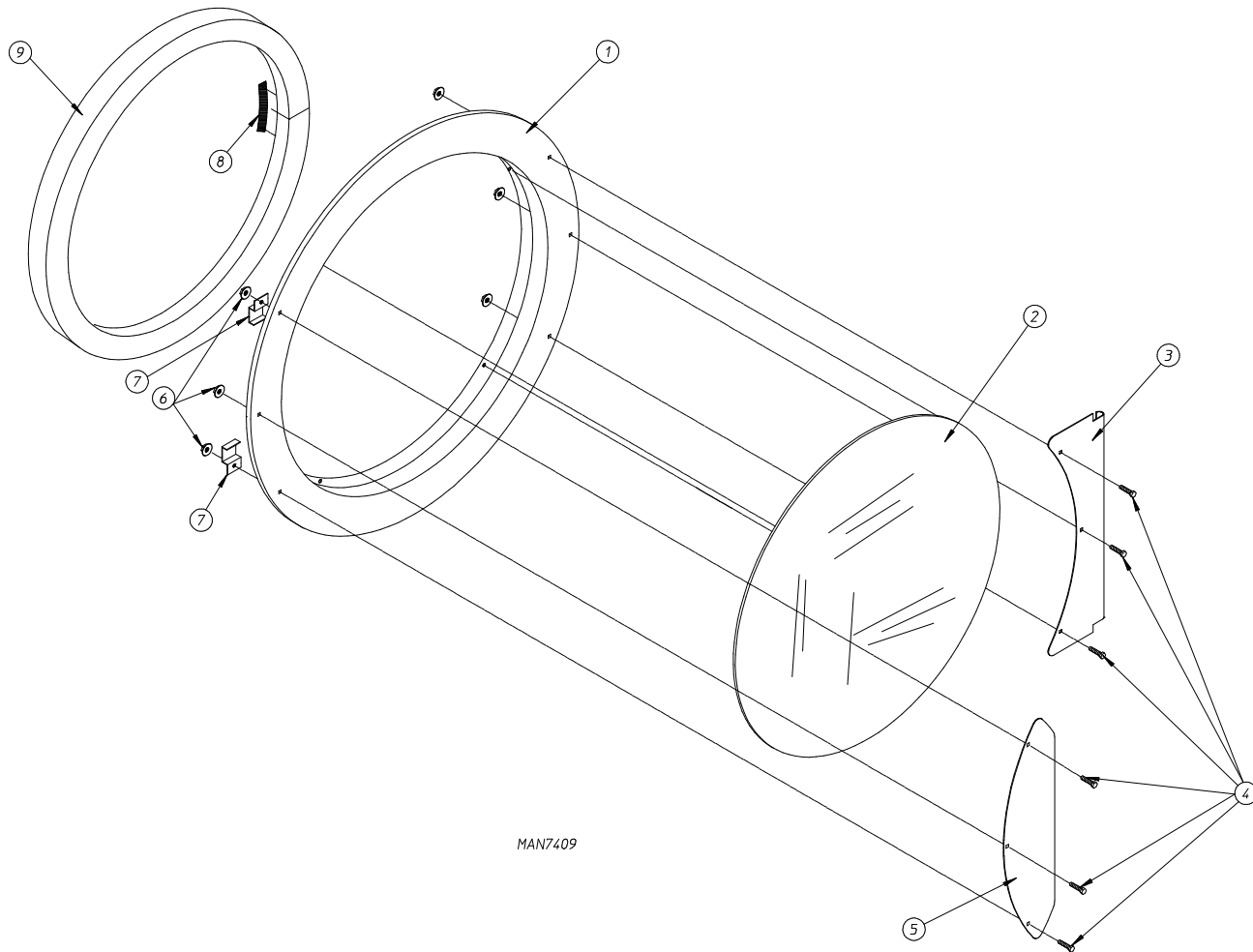
Phase 7 Non-Coin Microprocessor Control Panel Assembly



<u>Illus. No.</u>	<u>Part No.</u>	<u>Qty.</u>	<u>Description</u>
1	112577	1	Phase 7 Non-Coin Keypad
2	850980	1	Phase 7 Microprocessor Controller (computer) Panel
3	887004	1	Phase 7 Microprocessor Controller (computer) (for models mfd. as of December 3, 2003)
	887001	1	Phase 7 Microprocessor Controller (computer) (for models mfd. prior to December 3, 2003)
	887024	1	Phase 7 Microprocessor Controller (computer) for Models Mfd. without F.S.S.
4	150005	4	#6-32 x 3/4" Phillips Round Head Machine Screw
5	153010	4	#6 Star Washer
6	136016	1	5-Amp Fuse
7	136097	1	1/2-Amp Fuse

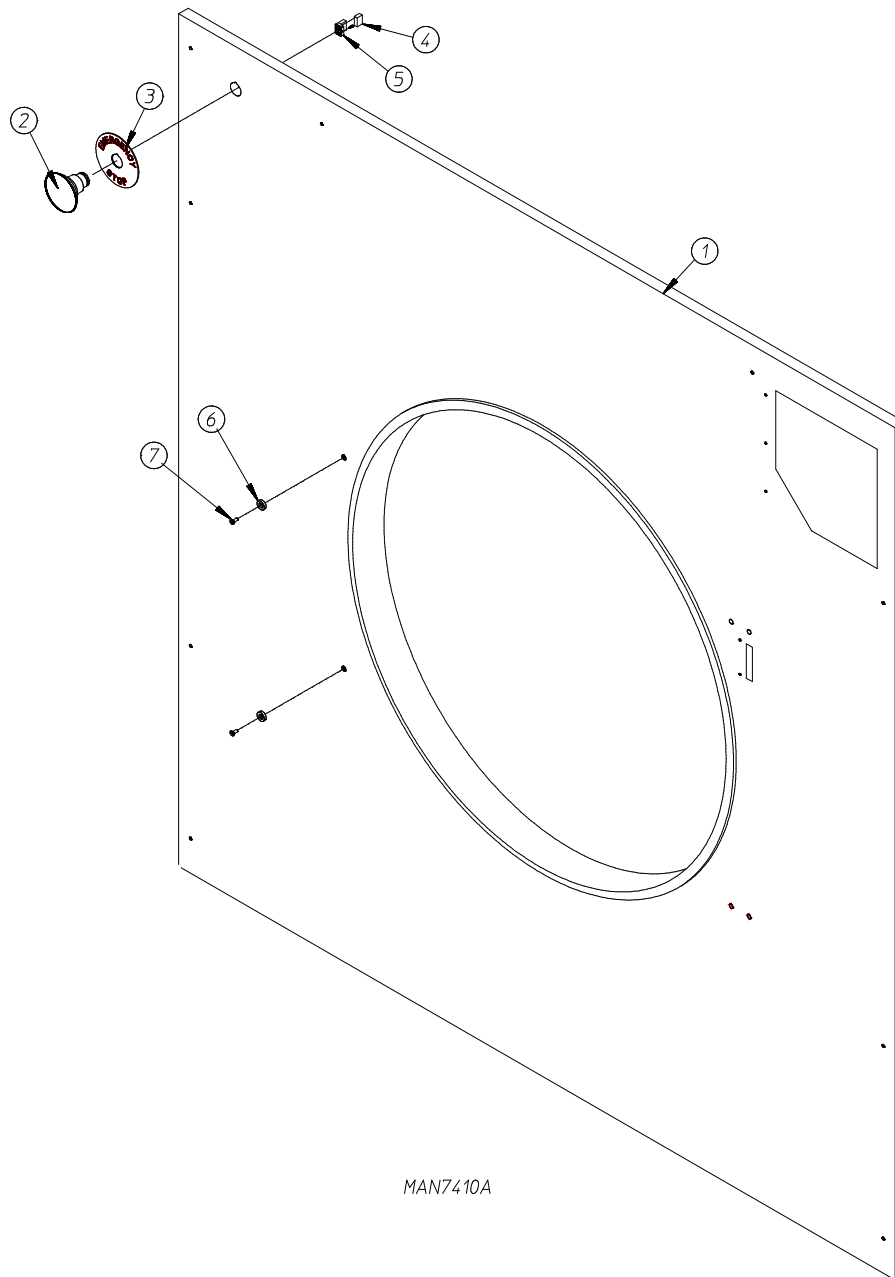
Main Door Assembly

For Models Mfd. as of September 10, 2005



<u>Illus. No.</u>	<u>Part No.</u>	<u>Qty.</u>	<u>Description</u>
1	801600	1	37-1/4" Round Door Assembly
2	102221	1	30" Door Glass
3	835128	1	Large Main Door Hinge
4	150683	6	1/4-20 x 5/8" Black Carriage Bolt
5	884367	1	Large Main Door Handle
6	152014	6	1/4-20 Free Spin Wash Nut
7	185522	2	37-1/4" Main Door Magnet Bracket
8	110006	2	1/2" Black Strapping Tape
9	102357	1	Extruded Steel Door Gasket

For Models Mfd. as of September 10, 2005



MAN7410A

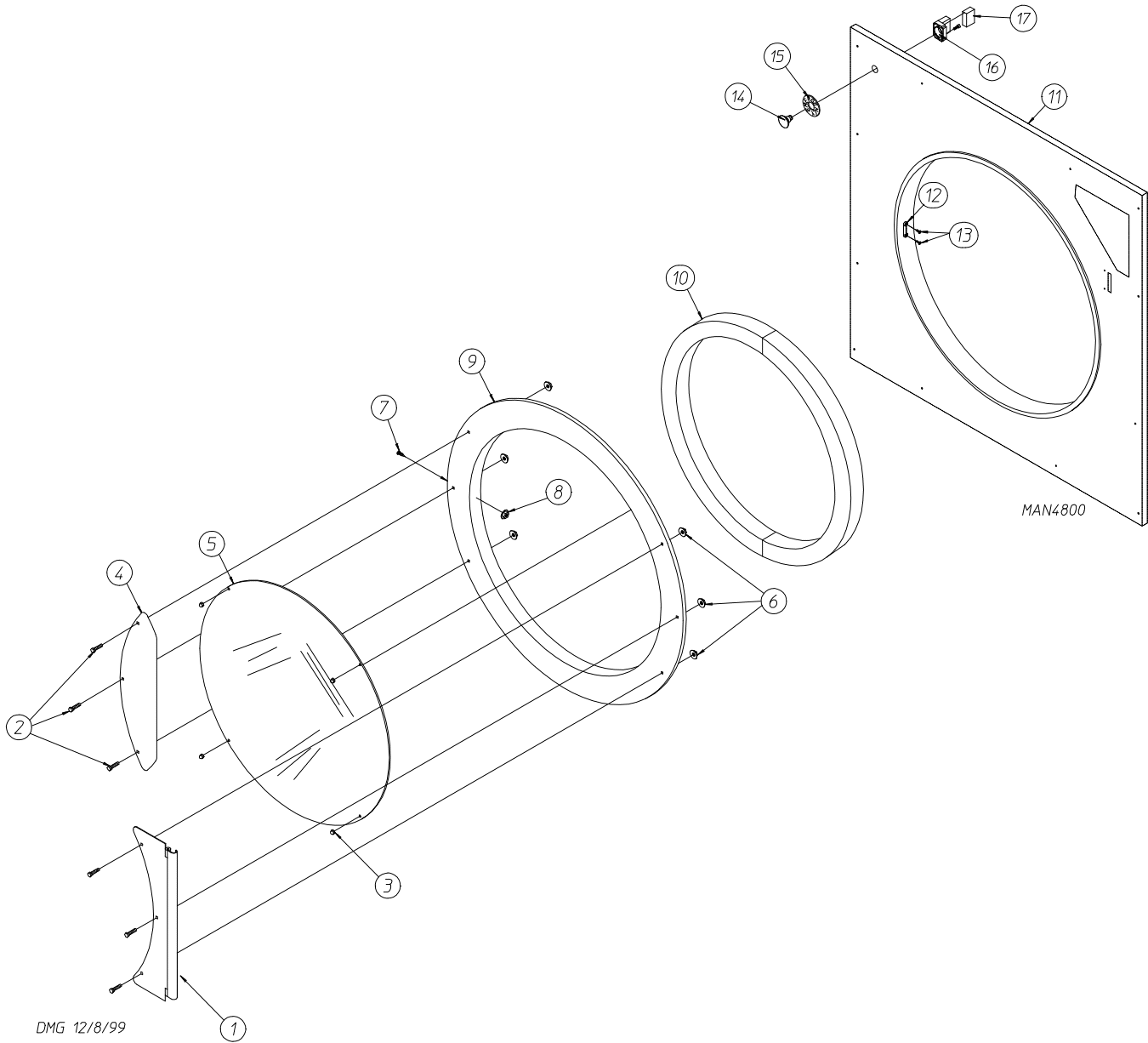
<u>Illus. No.</u>	<u>Part No.</u>	<u>Qty.</u>	<u>Description</u>
1	815099*	1	Magnet Front Panel with E-Stop
2	123553**	1	Large Emergency Stop Mushroom Head Switch (for models mfd. as of December 20, 2007)
3	123506	1	Emergency Stop Nameplate
4	123555**	1	Normally Open Contact Block (for models mfd. as of December 20, 2007)
5	123554**	1	Normally Closed Contact Block with Base (for models mfd. as of December 20, 2007)
6	102004	2	Compact Door Magnet
7	152223	2	#10-32 x 1/2" FH T-20 TORX® Machine Screw

* Specify color when ordering.

** Models mfd. prior to February 20, 2007 will require entire E-Stop assembly kit (P/N 887179).

Front Panel / Main Door Assemblies

For Models Mfd. prior to September 10, 2005



Front Panel / Main Door Assemblies

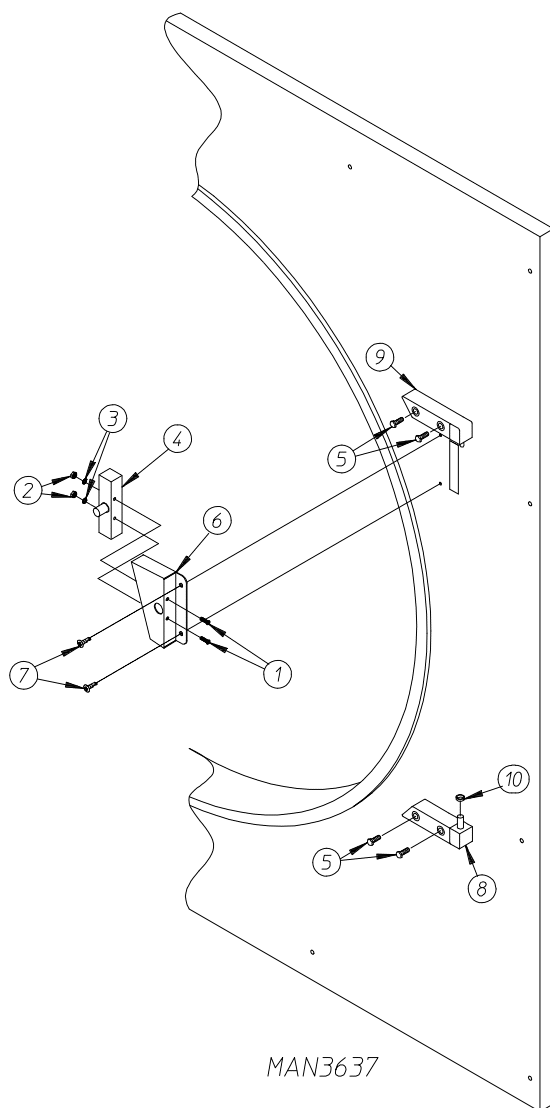
For Models Mfd. prior to September 10, 2005

<u>Illus. No.</u>	<u>Part No.</u>	<u>Qty.</u>	<u>Description</u>
1	881685	1	White Main Door Hinge
	882296	1	Coral Wrinkle Blue Main Door Hinge
2	881740	6	1/4-20 x 5/8" White Carriage Bolt
	881739	6	1/4-20 x 5/8" Coral Wrinkle Blue Carriage Bolt
3	151012	1	#10-32 White Acorn Nut
4	881688	1	White Main Door Handle
	881737	1	Coral Wrinkle Blue Main Door Handle
5	102221	1	30" Door Glass (for models mfd. as of November 6, 2003)
	102214	1	30" Door Glass (for models mfd. prior to November 6, 2003)
	170730	1	Door Glass Adhesive (10.3 oz. cartridge)
6	881806	6	1/4-20 White Free Spin Wash Nut
	882293	6	1/4-20 Coral Wrinkle Blue Free Spin Wash Nut
7	150125	1	Main Door Latch Screw
8	151010	1	#10-32 Acorn Nut
9	881689	1	White Main Door Assembly Complete (includes illus. nos. 1 through 10)
	881761	1	Coral Wrinkle Blue Main Door Assembly Complete (includes illus. nos. 1 through 10)
	881966	1	White Main Door Ring
	882305	1	Coral Wrinkle Blue Cold Rolled Steel Large Main Door Ring
10	882411	1	Extruded Steel Door Gasket
11	819026*	1	Front Panel Assembly
12	170330	1	Friction Door Latch
13	154215	2	5/32" Pop Rivet
14	123553**	1	"Emergency Stop" (E-Stop) Push-Pull Button (for models mfd. as of February 20, 2007)
15	123506**	1	"Emergency Stop" (E-Stop) Nameplate (for models mfd. as of February 20, 2007)
16	123555**	1	Normally Open Contact Block (for models mfd. as of February 20, 2007)
17	123554**	1	Normally Closed Contact Block with Base (for models mfd. as of February 20, 2007)

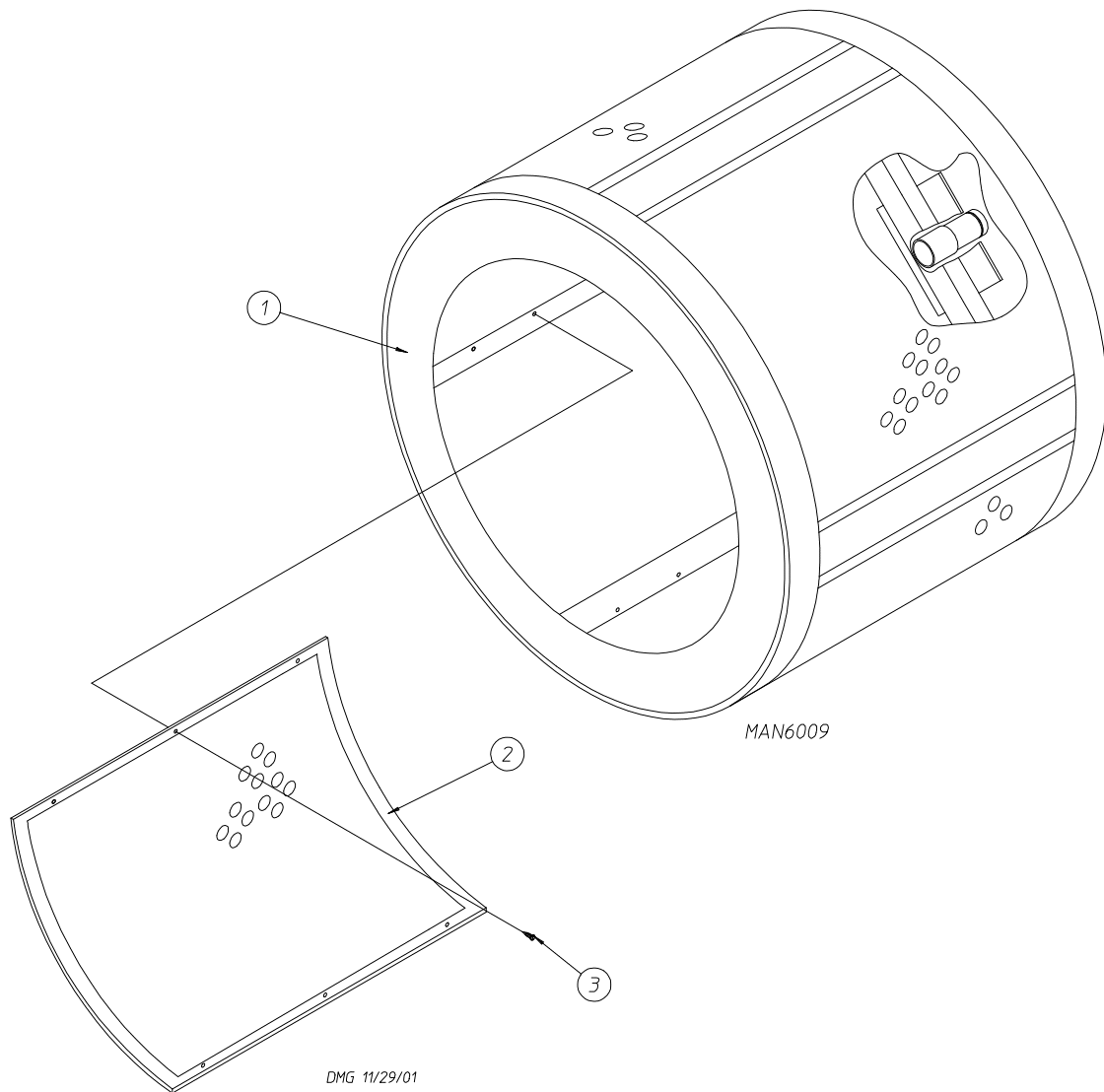
* Specify color when ordering.

** Models mfd. prior to February 20, 2007 will require entire E-Stop assembly kit (P/N 887179).

Main Door Switch



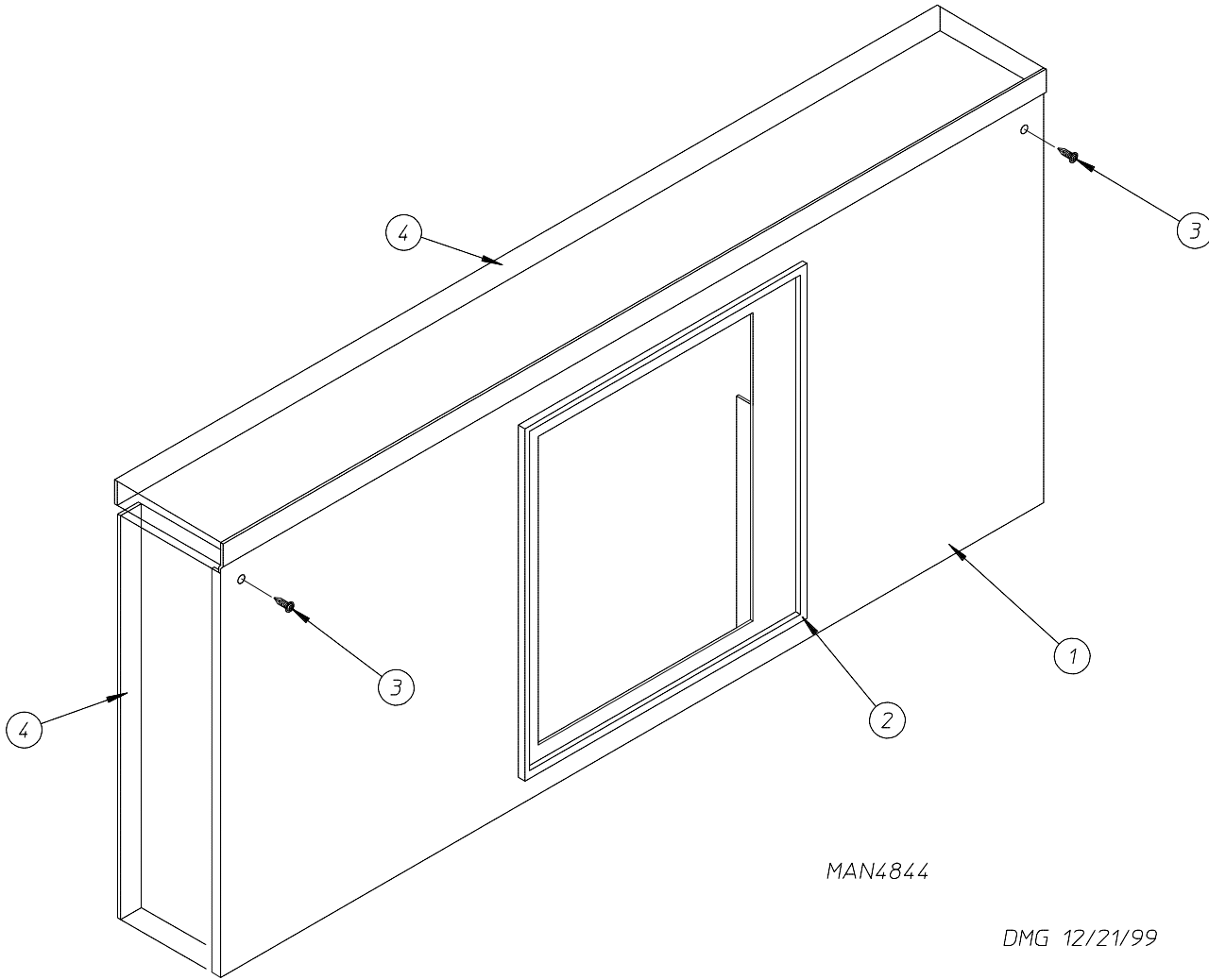
<u>Illus. No.</u>	<u>Part No.</u>	<u>Qty.</u>	<u>Description</u>
1	150006	2	#6-32 x 7/8" Phillips Pan Head Machine Screw
2	152013	2	#6-32 Hex Nut
3	153010	2	#6 Star Washer
4	137005	1	Single-Pole Door Switch
5	150443	4	1/4-20 x 3/4" Stainless Steel Cap Screw
6	881687	1	Main Door Switch Housing Only (white)
	882291	1	Main Door Switch Housing Only (coral wrinkle blue)
	881702	1	Main Door Switch with Housing Assembly (white) (includes illus. nos. 1 through 4 and 6)
	882298	1	Main Door Switch Housing Assembly (coral wrinkle blue) (includes illus. nos. 1 through 4 and 6)
7	150201	2	#10-32 x 1/4" Phillips Pan Head Screw
8	881441	1	Bottom Hinge Block (white)
	882283	1	Bottom Hinge Block (coral wrinkle blue)
9	881440	1	Top Hinge Block (white)
	882284	1	Top Hinge Block (coral wrinkle blue)
10	153031	1	Nylon Washer



<u>Illus. No.</u>	<u>Part No.</u>	<u>Qty.</u>	<u>Description</u>
1	835026	1	Tumbler Stainless Steel Assembly Complete (for models mfd. as of April 9, 2007)
	819096	1	Tumbler Stainless Steel Assembly Complete (for models mfd. between November 10, 2003 and April 8, 2007) (includes illus. nos. 1 through 3)
	819042	1	Tumbler Assembly Complete (for models mfd. prior to November 10, 2003) (includes illus. nos. 1 through 3)
2	333667	4	Perforated Stainless Steel Tumbler Panel (for models mfd. as of April 9, 2007)
	319083	4	Perforated Stainless Steel Tumbler Panel (for models mfd. between November 10, 2003 and April 8, 2007)
	883328	4	Perforated Tumbler Panel (for models mfd. prior to November 10, 2003)
3	150118	40	1/4-20 x 1/4" Phillips Pan Head Screw
*	881619	1	Rotational Sensor Magnet

* Not illustrated.

Lint Door Assembly

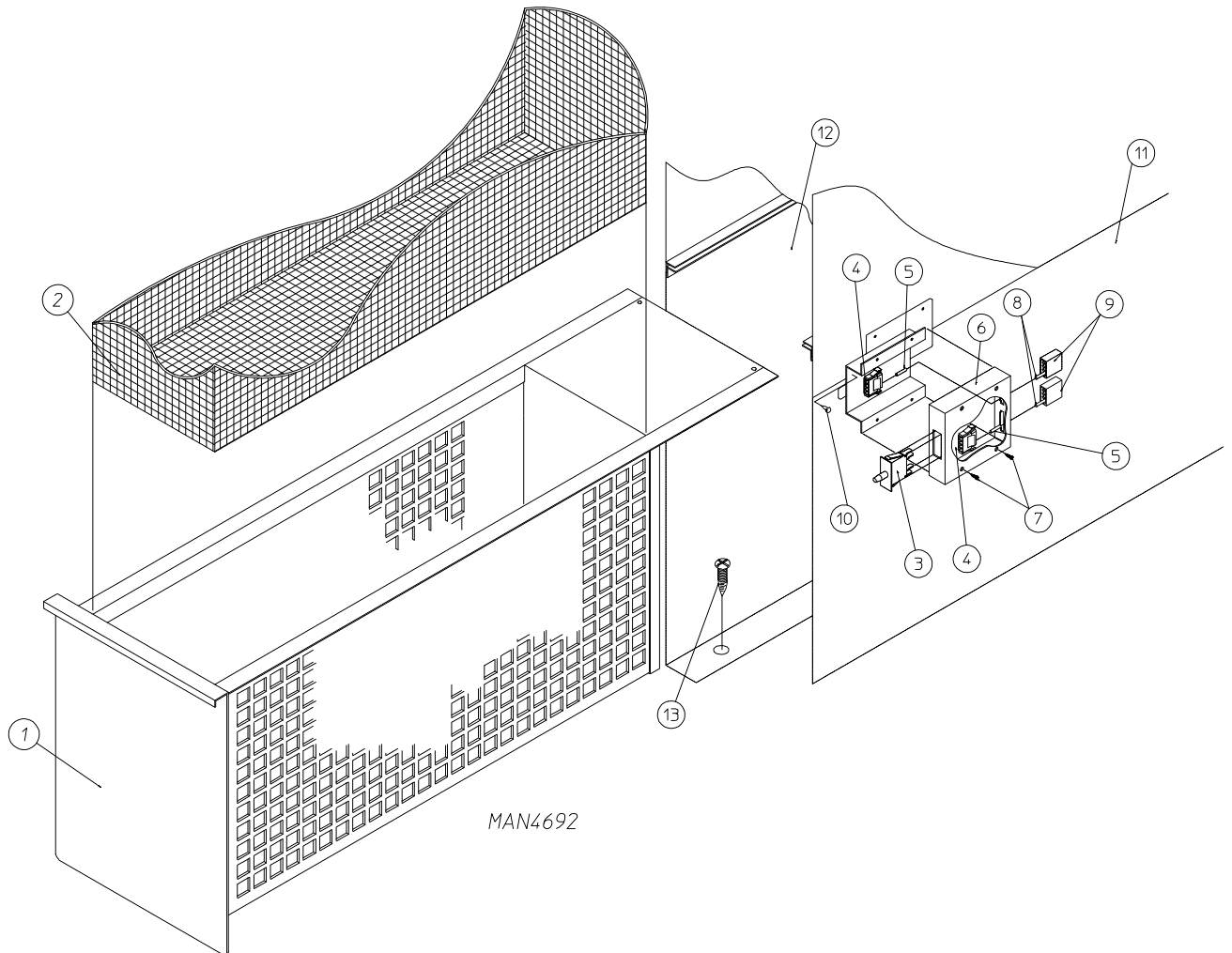


<u>Illus. No.</u>	<u>Part No.</u>	<u>Qty.</u>	<u>Description</u>
1	819071*	1	Lint Door Assembly (includes illus. nos. 1, 2, and 4)
2	117605	5'	Neoprene Sponge Tape (sold by the foot)
3	150309	5	#10-16 x 1/2" Hex Head TEK Crimptite Screw
4	117604	9'	Neoprene Sponge Tape (sold by the foot)

* Specify color.

Lint Drawer / Lint Drawer Switch Box Assemblies

For Models Mfd. as of March 1, 2003



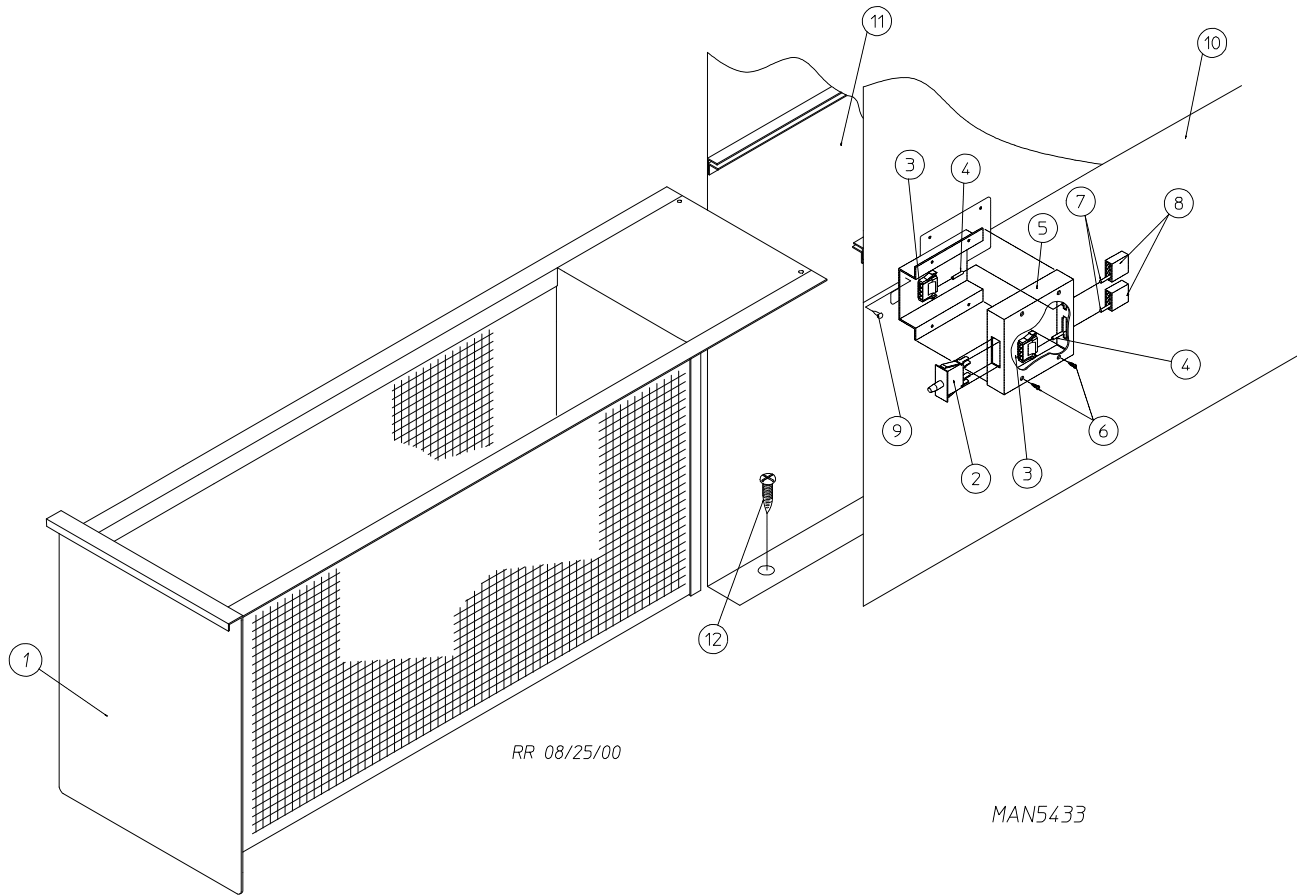
MAN4692

Illus. No.	Part No.	Qty.	Description
1	850959*	1	Lint Drawer Assembly (includes illus. nos. 1 and 2)
2	108220	1	Lint Screen Assembly
3	122116	1	Lint Drawer Switch
4	122605	1	4-Pin Socket Connector
5	122701	2	Socket Terminal
	122801	1	Pin / Socket Extraction Tool
6	822826	1	Lint Drawer Switch Box Assembly Complete (includes illus. nos. 3 through 6)
7	150301	4	#8-18 x 7/16" Phillips Pan Head TEK Screw
8	122700	2	Pin Terminal
9	122604	1	4-Pin Connector
10	150301	2	#8-18 x 7/16" Phillips Pan Head TEK Screw
11	390354	1	Right-Hand Divider Panel
12	390353	1	Left-Hand Divider Panel
13	150301	14	#8-18 x 7/16" Phillips Pan Head TEK Screw

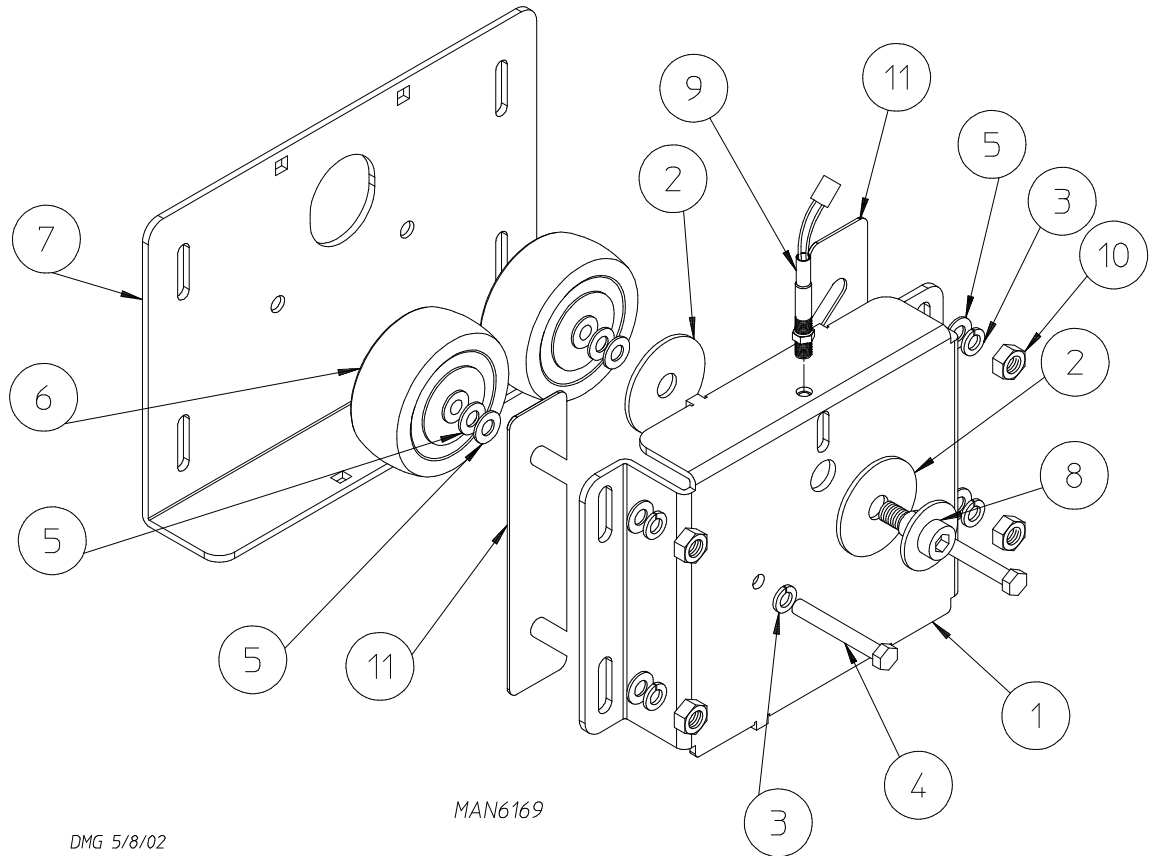
* Specify color when ordering.

Lint Drawer / Lint Drawer Switch Box Assemblies

For Models Mfd. prior to March 1, 2003



<u>Illus. No.</u>	<u>Part No.</u>	<u>Qty.</u>	<u>Description</u>
1	882792	1	Lint Drawer / Screen Assembly (white)
	882793	1	Lint Drawer / Screen Assembly (coral wrinkle blue)
2	122116	1	Lint Drawer Switch Only
3	122605	1	4-Pin Socket Connector
4	122701	2	Socket Terminal Only
	122801	1	Pin / Socket Extraction Tool
5	882507	1	Lint Drawer Switch Box Assembly Complete (includes illus. nos. 3 through 6)
6	150301	4	#8-18 x 7/16" Phillips Pan Head TEK Screw
7	122700	2	Pin Terminal Only
8	122604	1	4-Pin Connector
9	150301	2	#8-18 x 7/16" Phillips Pan Head TEK Screw
10	319076	1	Right-Hand Divider Panel
11	319077	1	Left-Hand Divider Panel
12	150301	14	#8-18 x 7/16" Phillips Pan Head TEK Screw

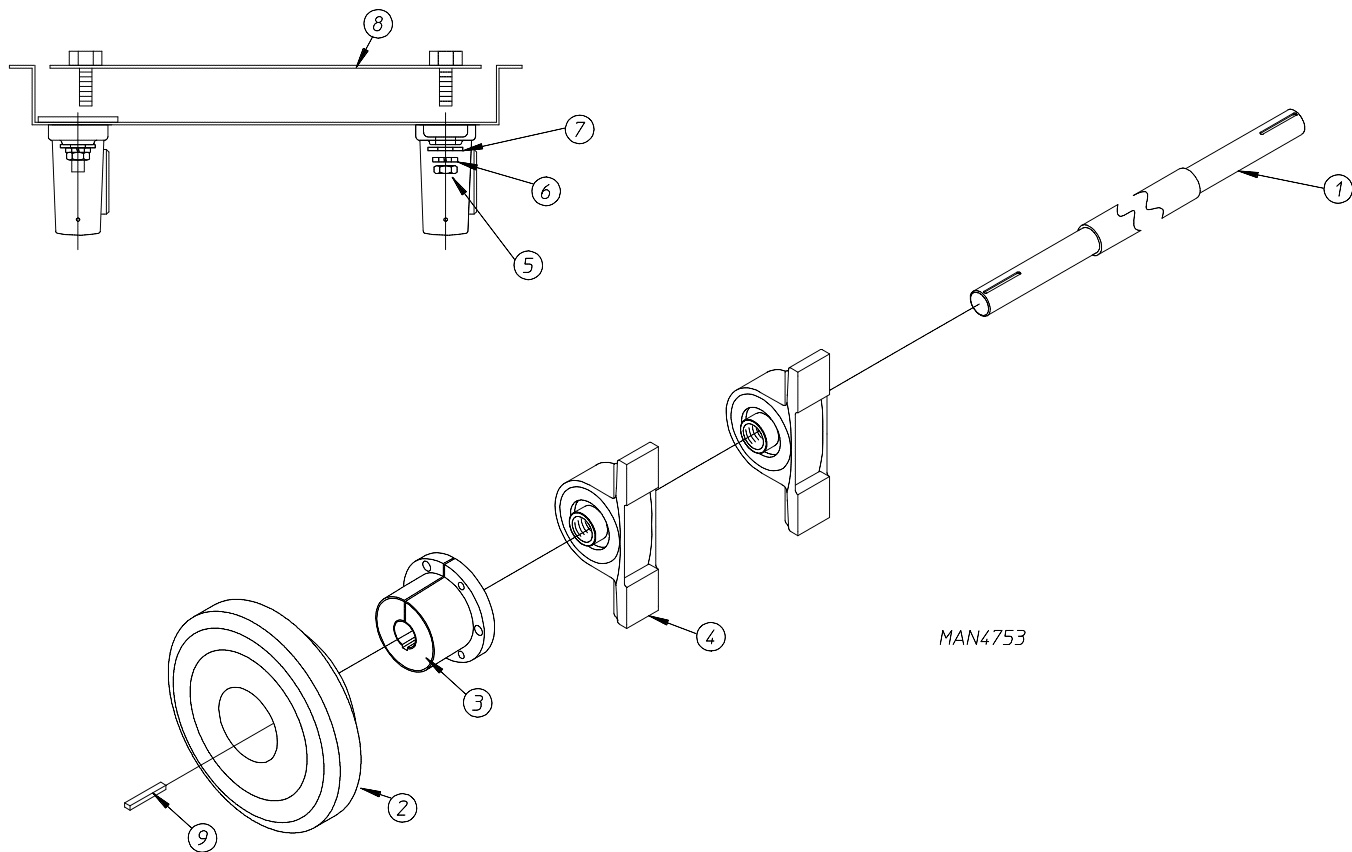


DMG 5/8/02

MAN6169

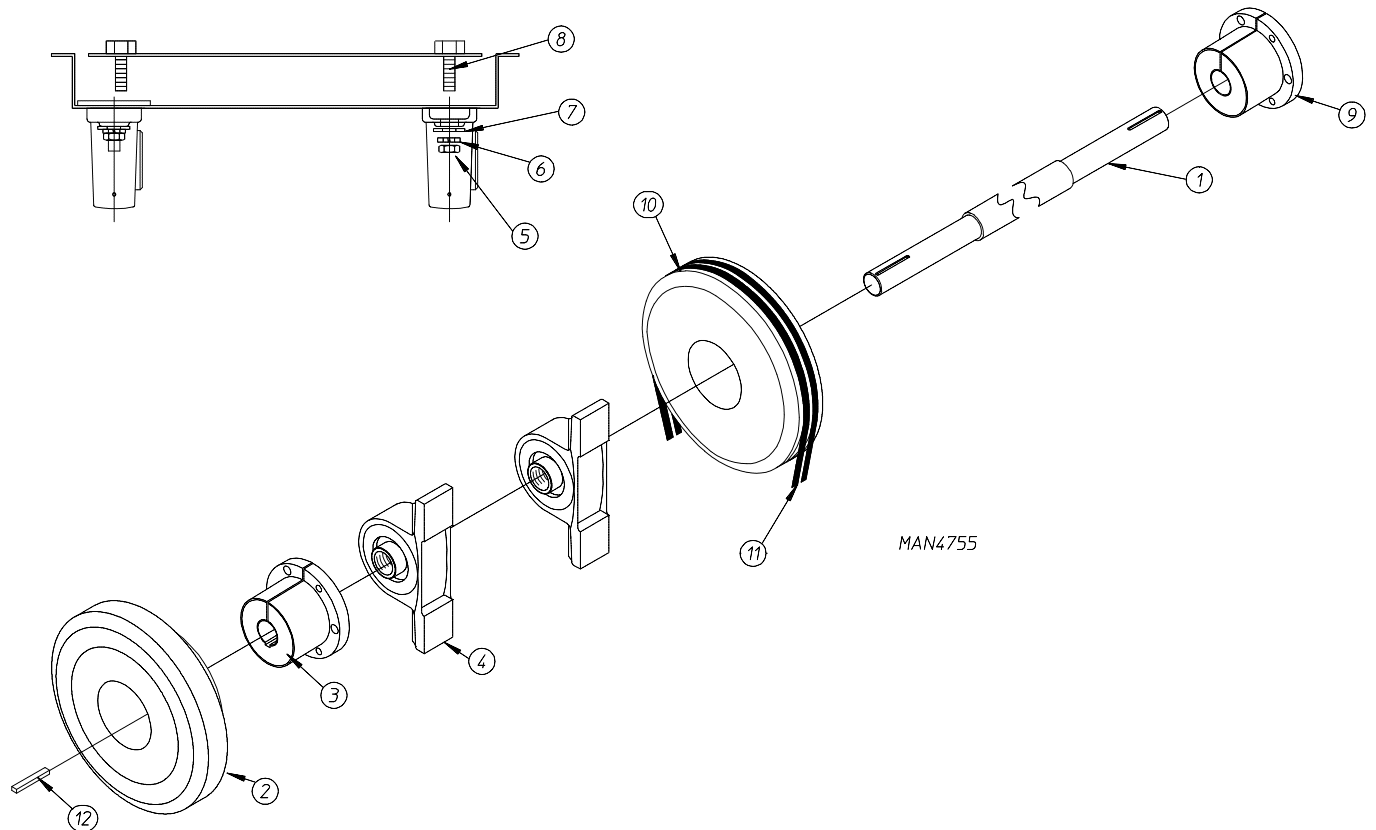
<u>Illus. No.</u>	<u>Part No.</u>	<u>Qty.</u>	<u>Description</u>
1	819064	1	Tumbler Shaft Support Assembly Complete (includes illus. nos. 1 through 8 and 11)
	835339	1	Tumbler Shaft Support Bracket
2	102394	2	Tumbler Friction Pad
3	153005	6	3/8" Lock Washer
4	150619	2	3/8-16 x 1" Tap Bolt
5	153004	8	3/8" Flat Washer
6	180018	2	4" x 1-1/2" Hi-Impact Wheel
7	819046	1	Tumbler Adjustment Plate
8	819065	1	Tumbler Shoulder Screw
9	822735	1	Phase 7 Rotational Sensor Assembly
10	152005	4	3/8-16 Hex Nut
11	323433	2	Rear Wheel Shim

Idler Shaft Assembly



MAN4753

<u>Illus. No.</u>	<u>Part No.</u>	<u>Qty.</u>	<u>Description</u>
1	319062	1	Idler Shaft
2	821465	1	11" Drive Wheel
3	101227	1	1-1/2" Taper Lock Bushing
4	880880	2	1-1/2" Pillow Block Bearing
5	152011	4	1/2-13 Hex Nut (for models mfd. as of August 22, 2003)
	152005	4	3/8-18 Hex Nut (for models mfd. prior to August 22, 2003)
6	153026	4	1/2" Lock Washer (for models mfd. as of August 22, 2003)
	153005	4	3/8" Lock Washer (for models mfd. prior to August 22, 2003)
7	153050	4	1/2" Flat Washer (for models mfd. as of August 22, 2003)
	153004	4	3/8" Flat Washer (for models mfd. prior to August 22, 2003)
8	835410	2	Bearing Backing Plate Assembly (for models mfd. as of August 22, 2003)
	835360	2	Bearing Backing Plate Assembly (for models mfd. prior to August 22, 2003)
9	100717	1	5/16" x 5/16" x 2-3/4" Long Key

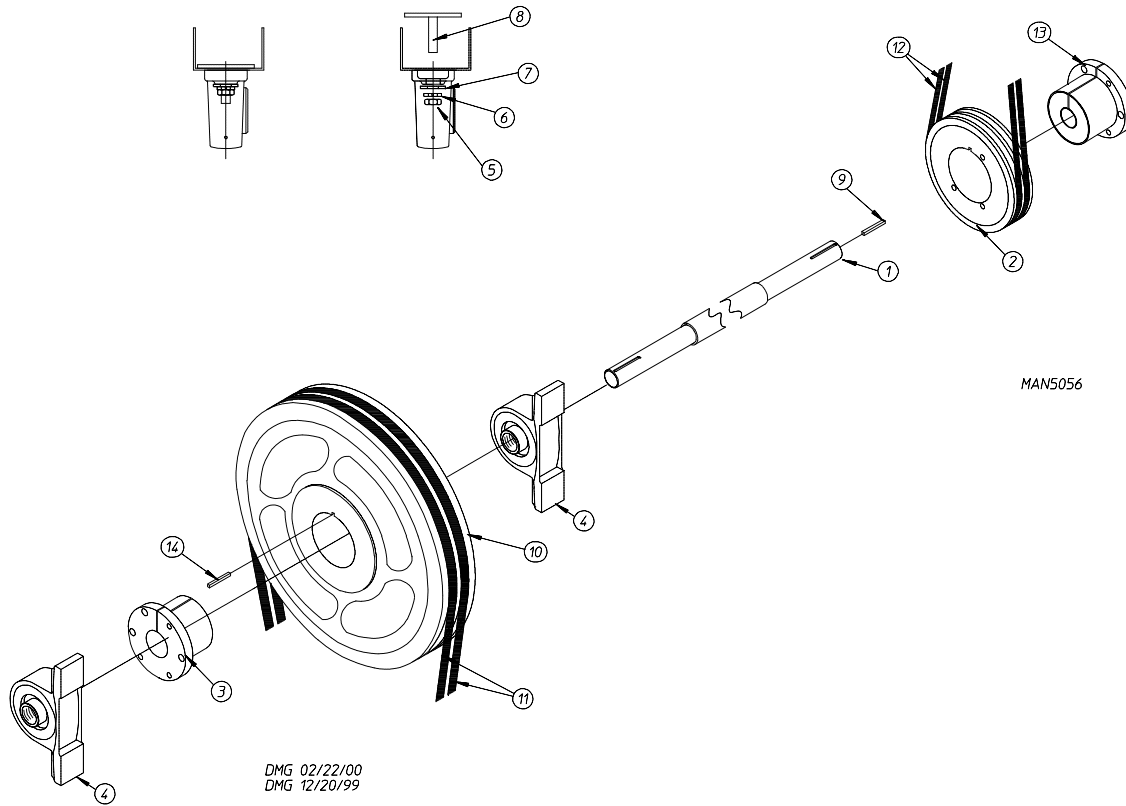


MAN4755

Illus. No.	Part No.	Qty.	Description
1	319062	1	Drive Shaft
2	821465	1	11" Drive Wheel
3	101227	1	1-1/2" Taper Lock Bushing
4	880880	2	1-1/2" Pillow Block Bearing
5	152011	4	1/2-13 Hex Nut (for models mfd. as of August 22, 2003)
	152005	4	3/8-18 Hex Nut (for models mfd. prior to August 22, 2003)
6	153026	4	1/2" Lock Washer (for models mfd. as of August 22, 2003)
	153005	4	3/8" Lock Washer (for models mfd. prior to August 22, 2003)
7	153050	4	1/2" Flat Washer (for models mfd. as of August 22, 2003)
	153004	4	3/8" Flat Washer (for models mfd. prior to August 22, 2003)
8	836024	2	Bearing Backing Plate Assembly (for models mfd. as of August 22, 2003)
	835360	2	Bearing Backing Plate Assembly (for models mfd. prior to August 22, 2003)
9	101150	1	1-1/2" Bushing with Setscrew
10	101189	1	2B x 8.0 Pulley
11*	100140	2	BX-38 Cogged Belt
12	100717	1	5/16" x 5/16" x 2-3/4" Key

* Replace in matched sets (both belts).

Speed Reducer Shaft Assembly

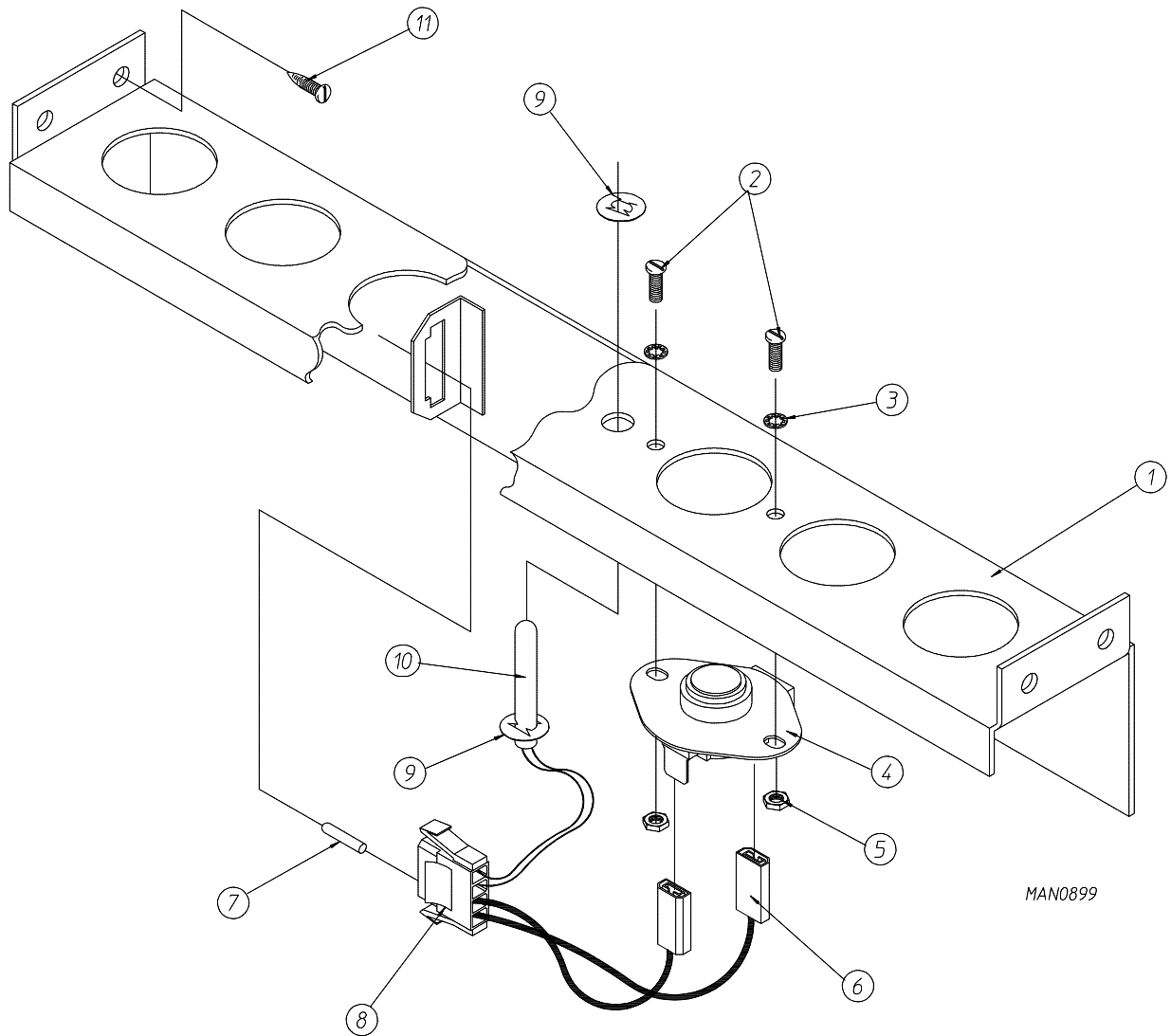


DMG 02/22/00
DMG 12/20/99

<u>Illus. No.</u>	<u>Part No.</u>	<u>Qty.</u>	<u>Description</u>
1	319062	1	Speed Reducing Shaft
2	101160	1	2B x 3.4 SH Sheave
3	101150	1	1-1/2" Bushing with Setscrew
4	880880	2	1-1/2" Pillow Block Bearing
5	152011	4	1/2-13 Hex Nut (for models mfd. as of August 22, 2003)
	152005	4	3/8-18 Hex Nut (for models mfd. prior to August 22, 2003)
6	153026	4	1/2" Lock Washer (for models mfd. as of August 22, 2003)
	153005	4	3/8" Lock Washer (for models mfd. prior to August 22, 2003)
7	153050	4	1/2" Flat Washer (for models mfd. as of August 22, 2003)
	153004	4	3/8" Flat Washer (for models mfd. prior to August 22, 2003)
8	836024	2	Bearing Back Up Plate (for models mfd. as of August 22, 2003)
	835361	2	Bearing Back Up Plate (for models mfd. prior to August 22, 2003)
9	————	1	Bushing Key (includes illus. no. 13)
10	101193	1	2B x 13.6" SK Sheave
11*	100128	2	BX-50 Belt
12*	100193	2	BX-45 Cogged Belt
13	101230	1	SH x 1-1/2" Bushing with Setscrew (includes illus. no. 9)
14	100710	1	3/8" x 3/8" x 3" Key

* Replace in matched sets (both belts).

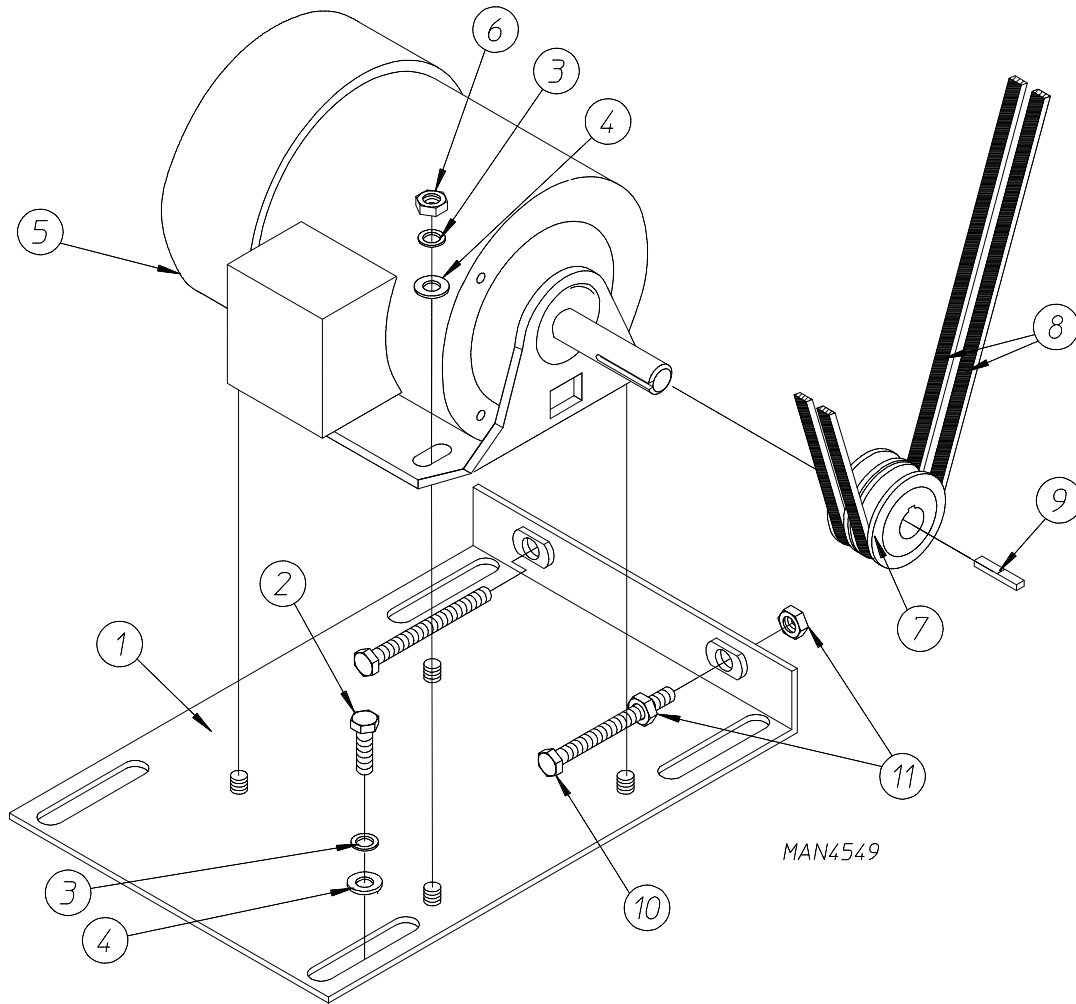
Microprocessor Temperature Sensor Bracket Assembly



MAN0899

<u>Illus. No.</u>	<u>Part No.</u>	<u>Qty.</u>	<u>Description</u>
1	815931	1	Microprocessor Temperature Sensor Bracket Complete (includes illus. nos. 1 through 10)
	820967	1	Microprocessor Temperature Sensor Bracket Only
2	150005	2	#6-32 x 1/4" Round Head Machine Screw
3	153010	2	#6 Star Washer
4	130103	1	225° Auto Reset Thermostat Only
5	152000	2	#6-32 Hex Nut
6	121028	2	1/4" x .032 Insulated Terminal
7	122701	4	Socket Terminal Only
8	122605	1	4-Pin Socket Connector
9	154007	2	1/4" Push-On Fastener
10	815961	1	1/4" Temperature Sensor Probe Assembly (includes illus. nos. 6 through 10)
11	150301	4	#8-18 x 7/16" Phillips Pan Head TEK Screw

Totally Enclosed, Non-Venting Drive Motor Assembly

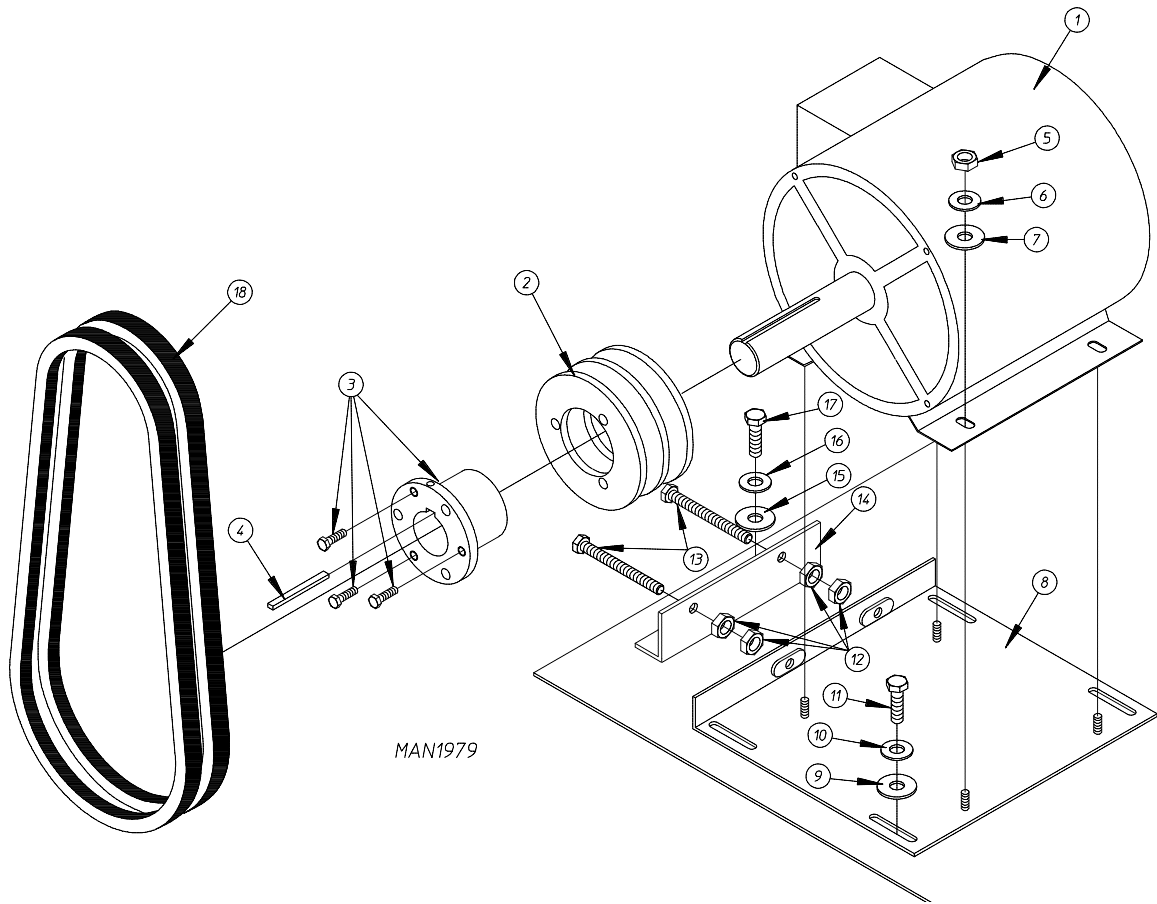


<u>Illus. No.</u>	<u>Part No.</u>	<u>Qty.</u>	<u>Description</u>
1	835297	1	Motor Adjustment Plate
2	150501	4	5/16-18 x 3/4" Hex Head Tap Bolt
3	153002	8	5/16" Lock Washer
4	153001	8	5/16" Flat Washer
5	100043	1	3 hp 208-230 / 460v 3ø 60 Hz Totally Enclosed, Non-Venting Motor 380-416v 3ø 50 Hz Totally Enclosed, Non-Venting Motor
	181019	1	3 hp 575v 3ø 60 Hz Totally Enclosed, Non-Venting Motor
6	152004	4	5/16" Hex Nut
7	101235	1	2MB35 x 1-1/8" Pulley
	101132	1	5/8" Bore x 2.0" Pulley
8*	100128	2	BX-50 V-Belt
9**	_____	1	5/16" Key
10	150619	2	3/8-16 x 3" Tap Bolt
11	152005	4	3/8-16 Hex Nut

* Replace in matched sets (both belts).

** Consult factory.

Blower Motor Mount Assembly

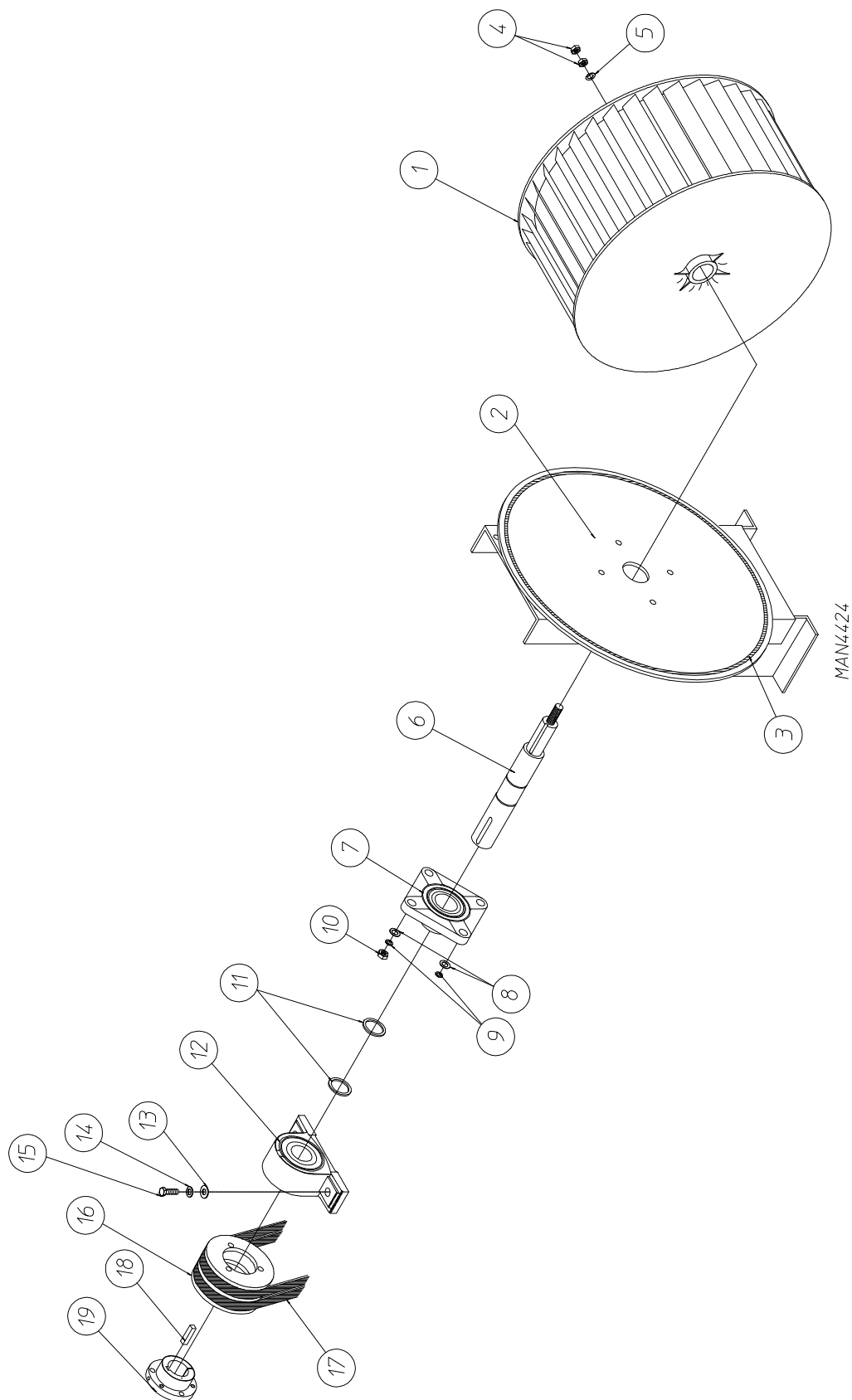


Illus. No.	Part No.	Qty.	Description
1	181030*	1	7.5 hp 208-230/460v 3ø 60 Hz Motor
	181031*	1	7.5 hp 200-230/380-410v 3ø 50 Hz Motor
	100021	1	7.5 hp 575v 3ø 60 Hz Motor
2	101148	1	SB x 4.0 Motor Pulley (60 Hz)
	101187	1	SB x 3.6 Motor Pulley (50 Hz)
3	101152	1	SH x 1-3/8" Bushing (60 Hz)
	101194	1	SDS x 1-3/8" Bushing (50 Hz)
4	100706	1	5/16" x 5/16" x 1-3/8" Key
5	152004	4	5/16-18 Hex Nut
6	153002	4	5/16" Lock Washer
7	153001	4	5/16" Flat Washer
8	821091	1	Motor Mount Adjustment Plate
9	153001	4	5/16" Flat Washer
10	153002	4	5/16" Lock Washer
11	150501	4	5/16-18 x 3/4" Hex Head Machine Bolt
12	152004	4	5/16-18 Hex Nut
13	150503	2	5/16-18 x 2" Hex Head Machine Bolt
14	332322	1	Motor Mount Adjustment Angle
15	153001	2	5/16" Flat Washer
16	153002	2	5/16" Lock Washer
17	150501	2	5/16-18 x 3/4" Hex Head Machine Bolt
18**	100184	2	BX-63 Cogged Belt (matched sets) 208-480 Volts 50/60 Hz
**	100159	2	BX-61 Cogged Belt (matched sets) 575v 60 Hz

* Specify voltage when ordering.

** Replace in matched sets (both belts).

Fan (Squirrel Cage) Shaft Mount Assembly

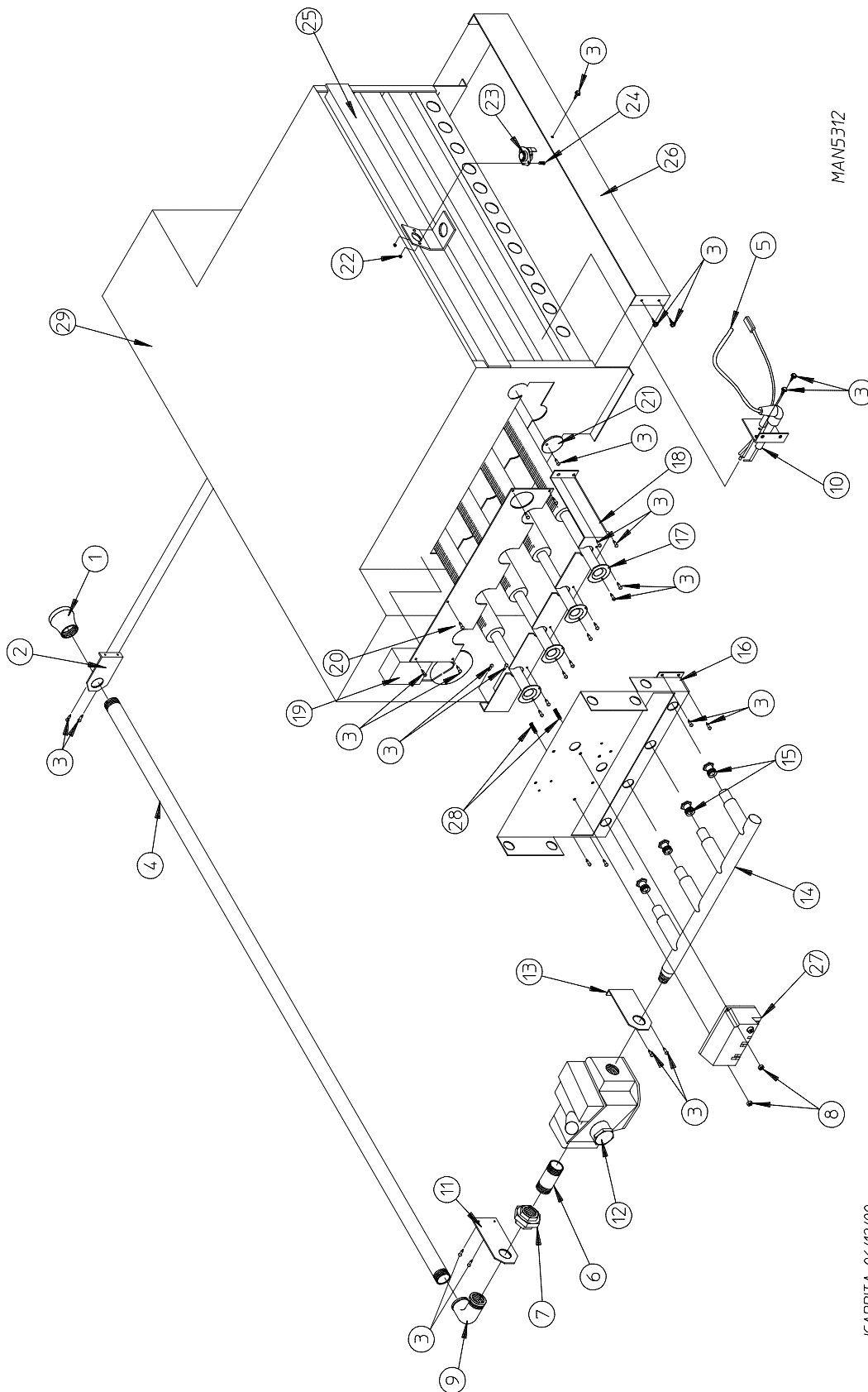


Fan (Squirrel Cage) Shaft Mount Assembly

<u>Illus. No.</u>	<u>Part No.</u>	<u>Qty.</u>	<u>Description</u>
1	100612	1	1-1/4" Bore x 15" Diameter x 6" Blower / Fan (squirrel cage)
2	821078	1	Fan Shaft Mount Assembly Complete (includes illus. nos. 1 through 16, 18, and 19)
	821073	1	Fan Shaft Mount ONLY
3	117604	4	Neoprene Sponge Tape (sold by the foot)
4	152006	2	1/2-20 Left-Hand Jam Nut
5	153065	1	1/2" Flat Washer
6	882930	1	Fan Shaft Assembly (includes illus. nos. 7, 11, and 12)
7	————	1	1-3/8" Flange Bearing with Setscrews and Grease Fitting (sold only as part of illus. no. 6)
8	153004	4	3/8" Flat Washer
9	153005	4	3/8" Lock Washer
10	152005	4	3/8-16 Hex Nut
11	100812	2	1-3/8" Retaining Ring
12	————	1	1-3/8" Pillow Block Bearing (sold only as part of illus. no. 6)
13	153004	2	3/8" Flat Washer
14	153005	2	3/8" Lock Washer
15	150617	2	3/8-16 x 1" Hex Head Bolt
16	101177	1	2B x 5.8 Pulley (for gas models Only)
17*	100184	2	BX-63 Cogged Belt (fan shaft to blower motor) 208-480 Volts 50/60 Hz
*	100159	2	BX-61 Cogged Belt (fan shaft to blower motor) 575 Volt 60 Hz
18	100706	1	5/16" x 5/16" x 1-3/8" Key
19	101194	1	SDS x 1-3/8" Bushing

* Replace in matched sets (both belts).

Direct Spark Ignition Burner Assembly



MAN5312

JCARRITA 06/12/00

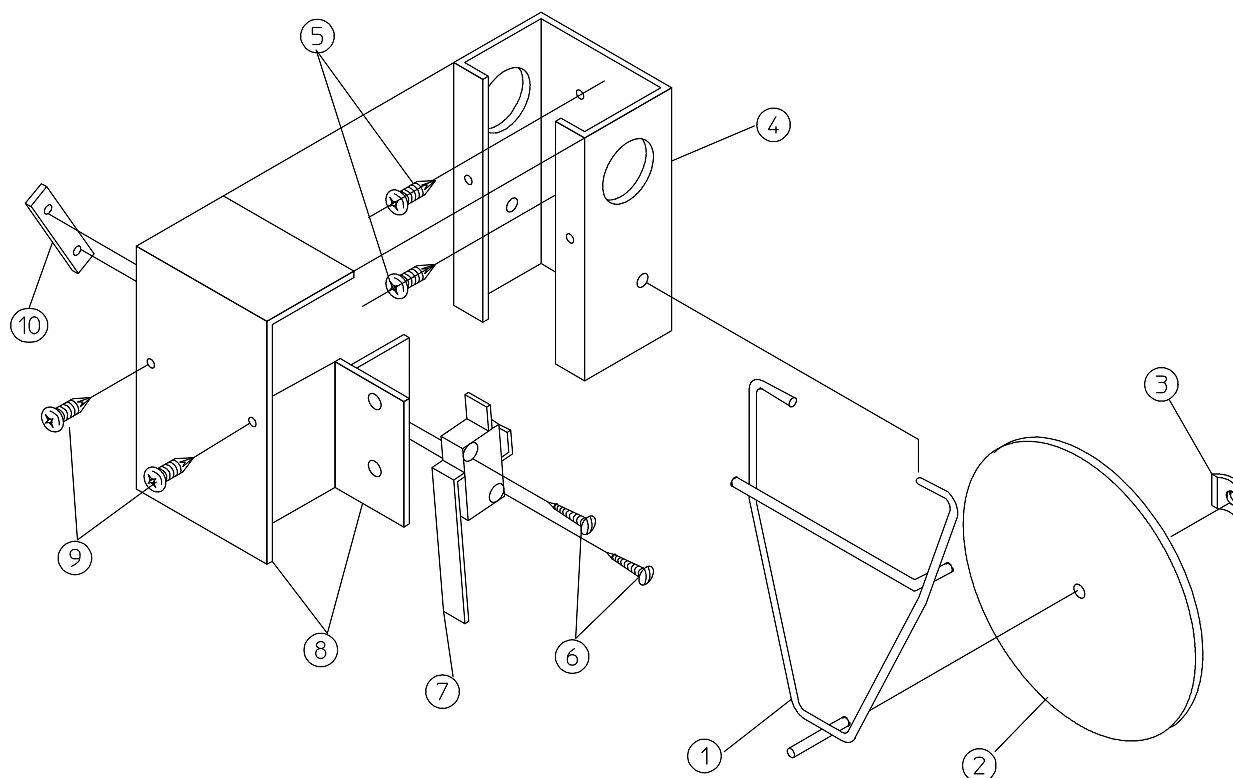
Direct Spark Ignition Burner Assembly

<u>Illus. No.</u>	<u>Part No.</u>	<u>Qty.</u>	<u>Description</u>
1	142929	1	1-1/2" to 1" Reducing Coupling
2	332117	1	Pipe Bracket
3	150309	33	#10-16 x 1/2" Hex Head TEK Crimptite Screw
4	142583	1	1" x 40" Nipple
5	829999	1	High Voltage Ignition Cable (for modules with 1/4 spade connection)
	128919	1	High Voltage Ignition Cable (for modules with spike style connection)
6	142808	1	1" x 3" Nipple
7	142602	1	1" Union
8	152013	2	#6-32 Hex Nut
9	142507	1	1" x 90° Street Elbow
10	128915	1	Direct Spark Ignition Ignitor
11	332487	1	Gas Pipe Bracket Straight Extended
12	140017	1	1" 24 VAC Redundant Gas Valve (natural gas)
	882945	1	1" 24 VAC Gas Valve Liquid Propane
13	332486	1	Gas Pipe Bracket Bent Extended
14	141239	1	4-Port Manifold
15	140840*	4	#1 Burner Orifice (natural gas)
	140821*	4	#28 Burner Orifice (liquid propane gas)
16	390169	1	Direct Spark Ignition Mount Manifold Rest
17	881492	4	Burner Tube
18	332121	1	Burner Tube Support
19	————	1	Sail Switch (refer to Sail Switch Assembly on page 26)
20	332113	1	Burner Box Cover Plate
21	331290	1	Ignitor / Flame-Probe Sight Hole Disc
22	151000	2	#6-32 Pal Nut
23	130201	1	330° Manual Reset Hi-Limit
24	150005	2	#6-32 x 1/4" Phillips Round Head Machine Screw
25	821457	1	Burner Hi-Limit Bracket
26	332256	1	Large Dryer Liquid Propane Burner Baffle (liquid propane models Only)
27	883849	1	Direct Spark Ignition Module (3 tries) with High Voltage Wire
28	153562	2	#6-32 x 3/4" Clinch Stud
29	————**	1	Burner Assembly (natural gas Only) Complete (less orifice)
	————**	1	Burner Assembly (liquid propane gas Only) Complete (less orifice)
	820904	1	Burner Box ONLY
	882222*	1	ML-190 Liquid Propane Conversion Kit

* Consult factory for elevations over 2,000 feet.

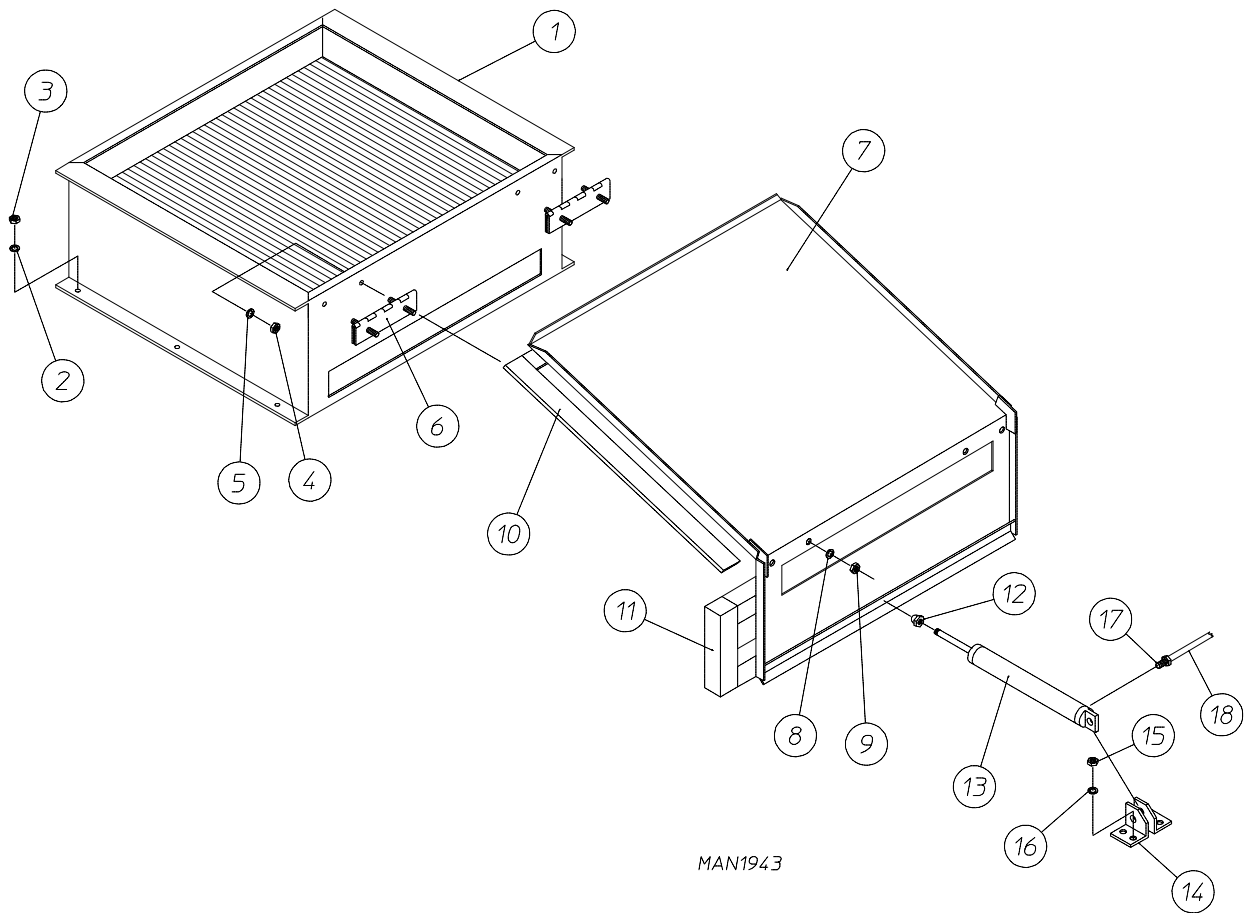
** Orifices are not included and must be ordered separately.

Sail Switch Assembly



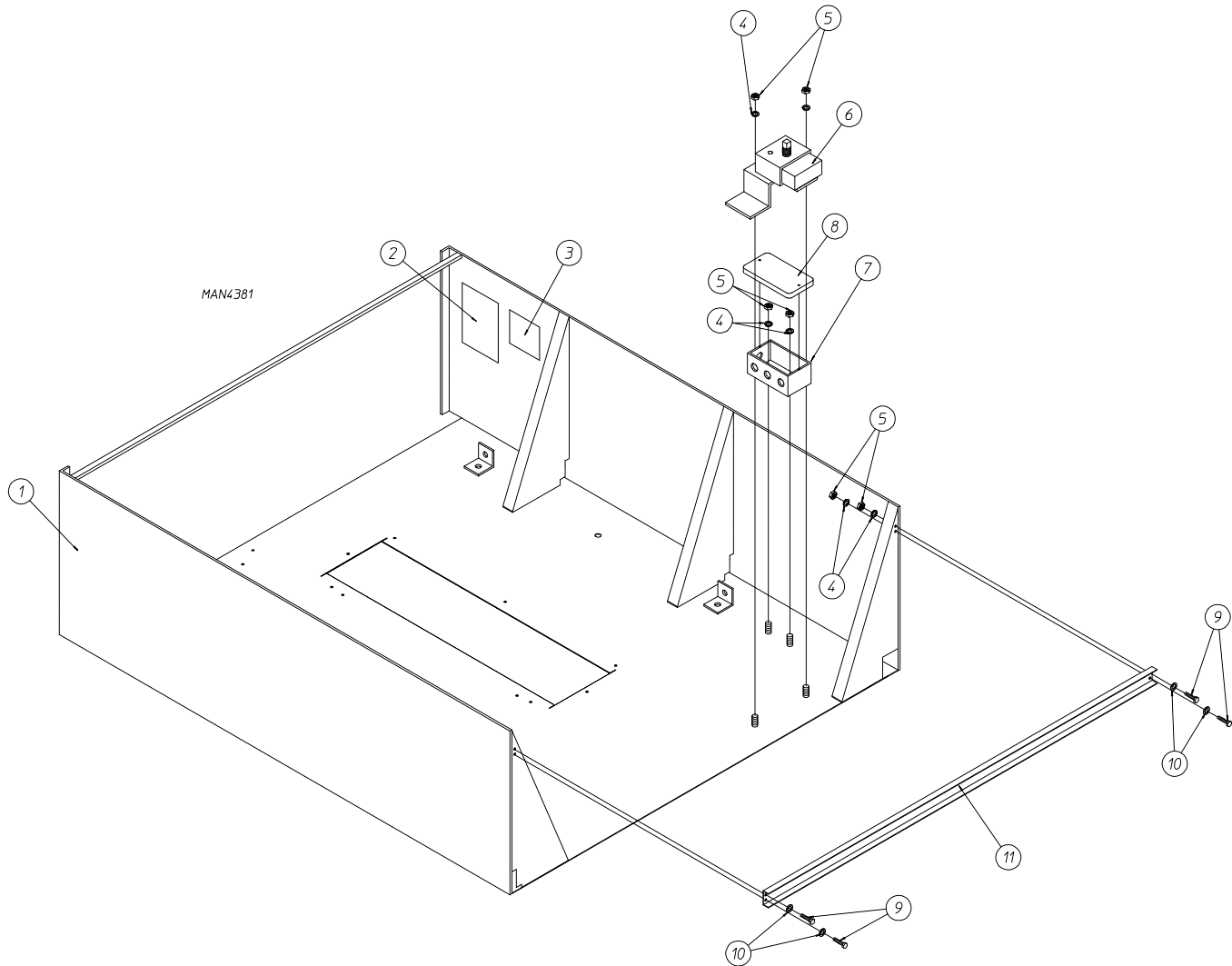
MAN0440

<u>Illus. No.</u>	<u>Part No.</u>	<u>Qty.</u>	<u>Description</u>
1	105500	1	Sail Switch Actuator Rod
2	319202	1	Sail Switch Damper (flat)
3	154002	1	1/8" Push-On Fastener
4	802800	1	Sail Switch Box with Cover and Bracket
	802801	1	Sail Switch Box Assembly Complete (includes illus. nos. 1 through 4 and 6 through 10)
5	150300	2	#10-16 x 1/2" Hex Washer
6	150303	2	#4 x 3/4" Pan Head "A" Machine Screw
7	122200	1	Sail Switch
8	802799	1	Sail Switch Box Cover and Bracket
9	150309	2	#10-16 x 1/2" Hex Head TEK Crimptite Screw
10	154004	1	Twin Speed Nut



<u>Illus. No.</u>	<u>Part No.</u>	<u>Qty.</u>	<u>Description</u>
1	165078	1	2-Stage Steam Coil (for models mfd. as of November 24, 2009)
	165017	1	Steam Coil (for models mfd. prior to November 24, 2009)
2	153002	6	5/16" Lock Washer
3	152004	6	5/16-18 Hex Nut
4	152002	4	1/4-20 Hex Nut
5	153007	4	1/4" Lock Washer
6	820321	2	Steam Damper Hinge Assembly
7	820994	1	Steam Damper Assembly (includes illus. nos. 7, 10, and 11)
8	153007	4	1/4" Lock Washer
9	152002	4	1/4-20 Hex Nut
10	115995	96	Steam Damper Gasket (sold by the inch)
11	102350	2	Steam Damper Foam (68-1/2" length)
12	151007	1	7/16-20 Stainless Steel Acorn Nut
13	100499	1	1-1/2" Bore x 3" Stroke Piston
14	100500	1	Piston Support Bracket
15	152002	4	1/4-20 Hex Nut
16	153007	4	1/4" Lock Washer
17	100472	1	1/4" x 1/8" Connector
18	143110	1	1/4" Tubing (sold by the foot)

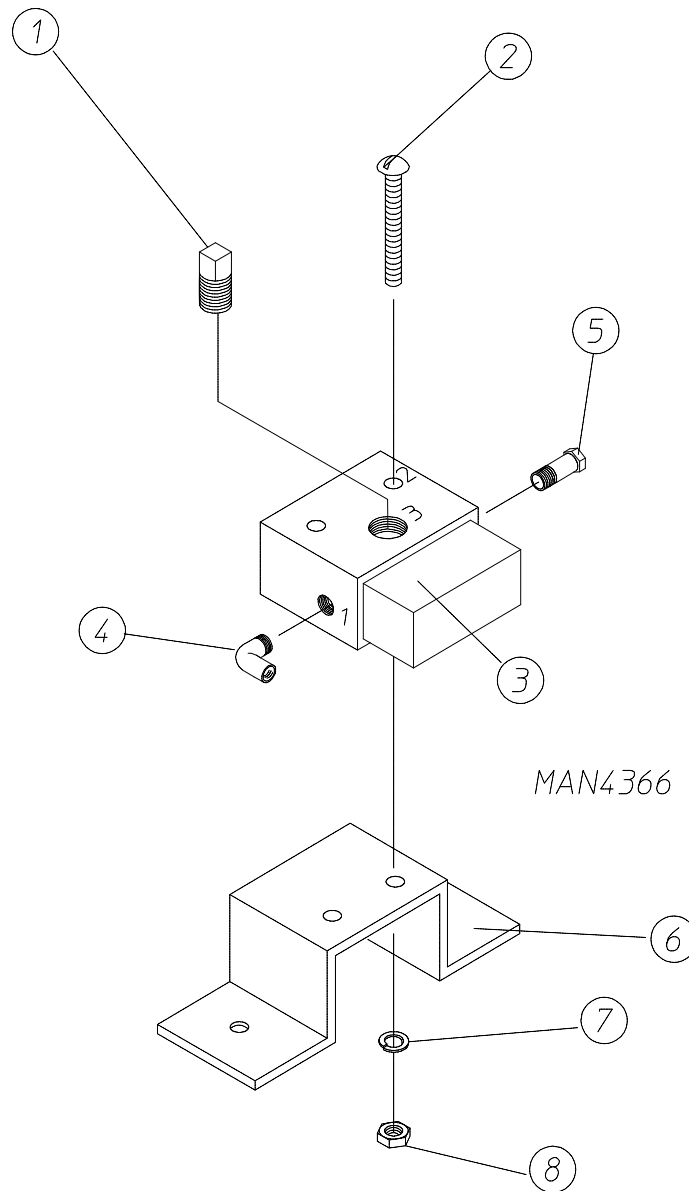
Top Console Assembly



<u>Illus. No.</u>	<u>Part No.</u>	<u>Qty.</u>	<u>Description</u>
1	882447	1	Top Console Assembly Only for Gas Models (white)
	882448	1	Top Console Assembly Only for Gas Models (coral wrinkle blue)
	882445	1	Top Console Assembly Only for Steam Models (white)
	882446	1	Top Console Assembly Only for Steam Models (coral wrinkle blue)
2	114521	1	"Phase 7 Non-Coin Program Location Summary" Label
3	_____	1	Dryer Data Label (not for resale by ADC)
4	153007	8	1/4" Lock Washer
5	152005	8	1/4-20 Hex Nut
6	821105	1	Pneumatic Valve Assembly Only for Gas Models (refer to Pneumatic Valve Assembly on page 29)
	821104	1	Pneumatic Valve Assembly Only for Steam Models (refer to Pneumatic Valve Assembly on page 30)
7	121104	1	2" x 4" Junction Box Only
8	121105	1	Junction Box Cover Only
9	150615	4	1/4-20 x 3/4" Bolt
10	153018	4	1/4" Flat Washer
11	332186	1	Control Door Hinge Channel

Pneumatic Valve Assembly

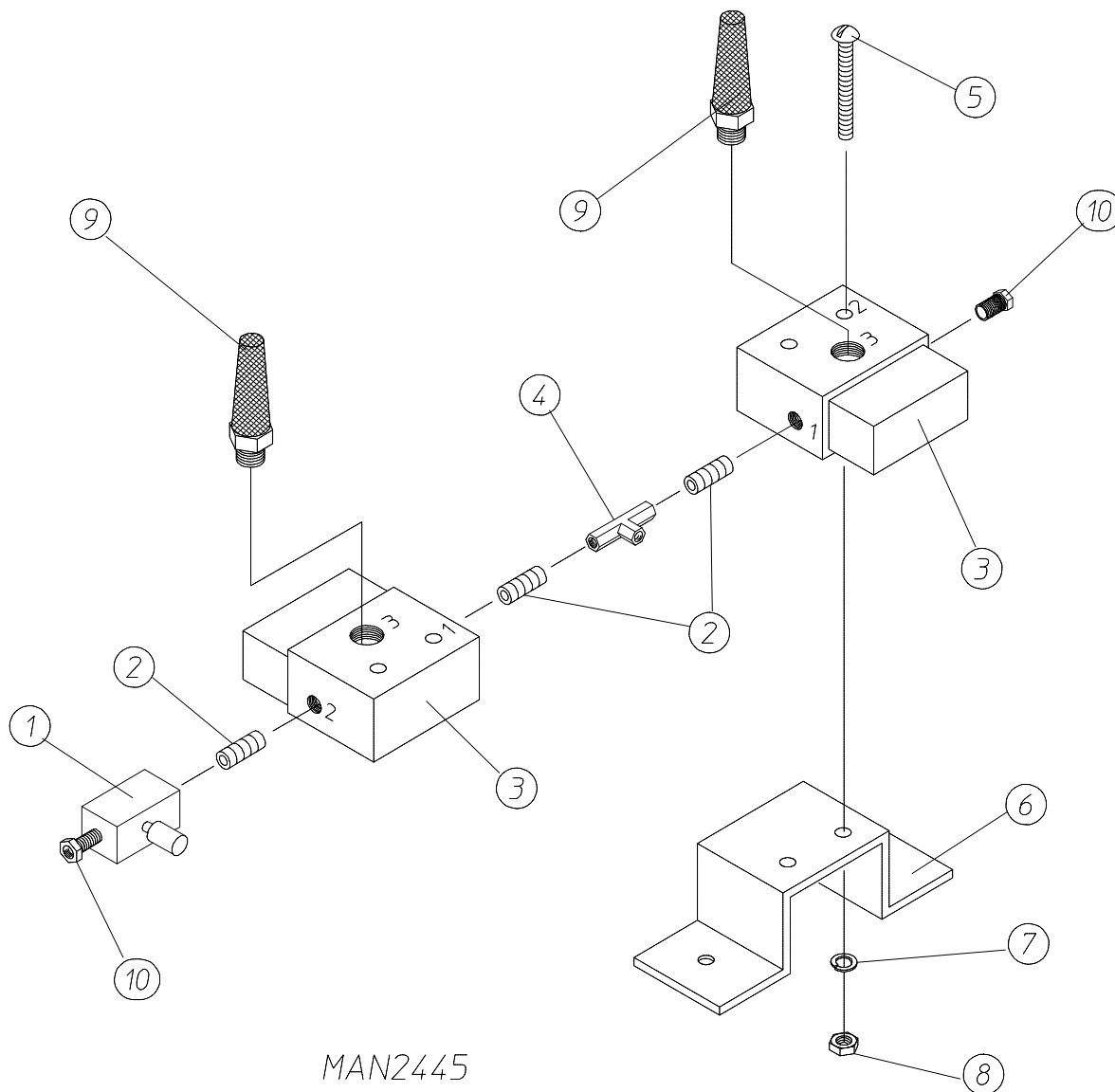
For Gas Models Only



<u>Illus. No.</u>	<u>Part No.</u>	<u>Qty.</u>	<u>Description</u>
1	143250	1	1/8" M.P.T. Brass Plug
2	150002	1	#6-32 x 1" Slotted Machine Screw
3	100498	1	3-Way Micro Valve Only – 24VAC
	821105	1	Pneumatic Valve Assembly Complete (includes illus. nos. 1 through 8)
4	143149	1	1/4" Poly x 1/8" M.P.T. Elbow
5	100472	1	1/4" x 1/8" Connector
6	330987	1	Micro Valve Support Bracket Only
7	153010	1	#6 Star Washer
8	152000	1	#6-32 Hex Nut

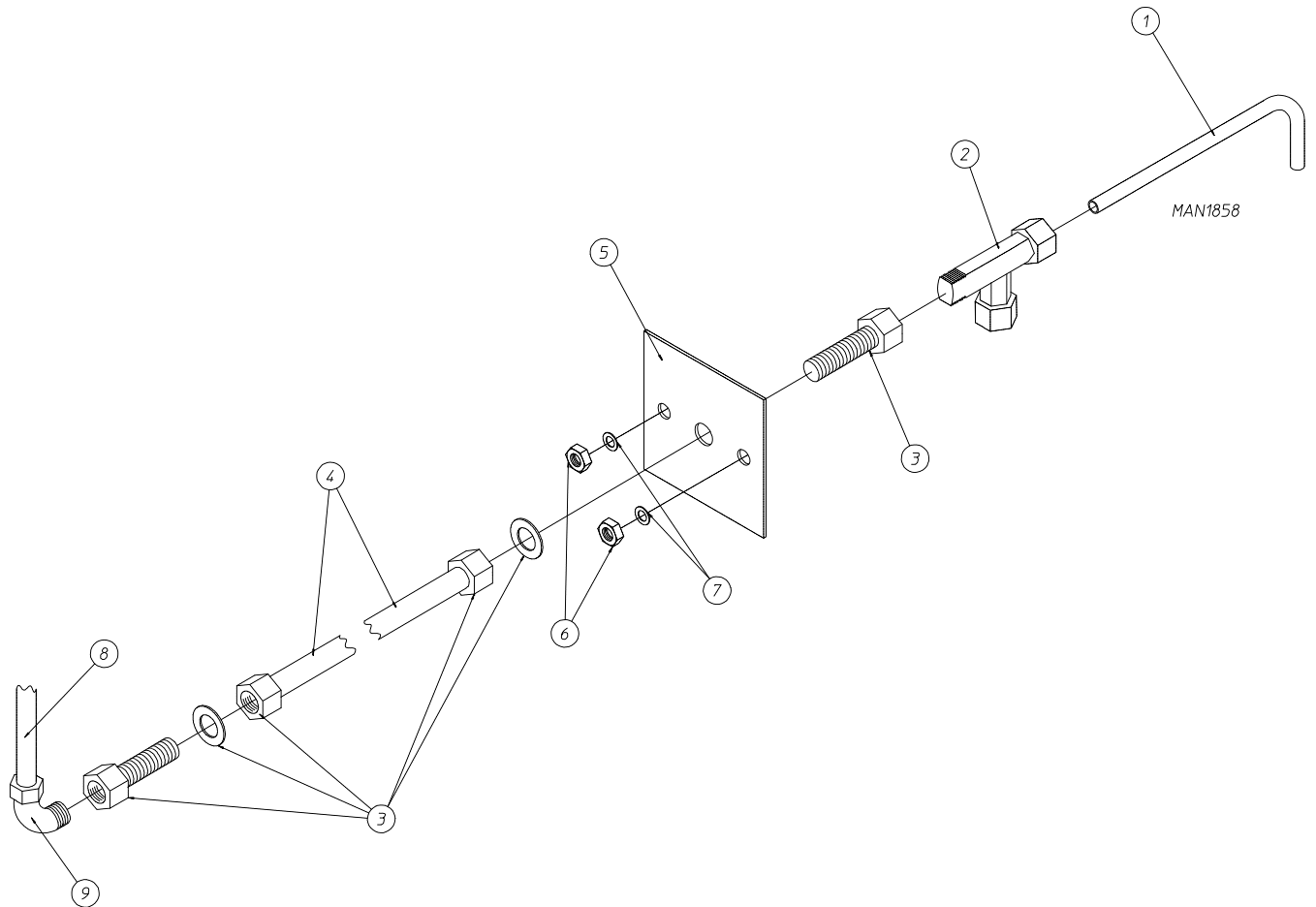
Pneumatic Valve Assembly

For Steam Models Only



MAN2445

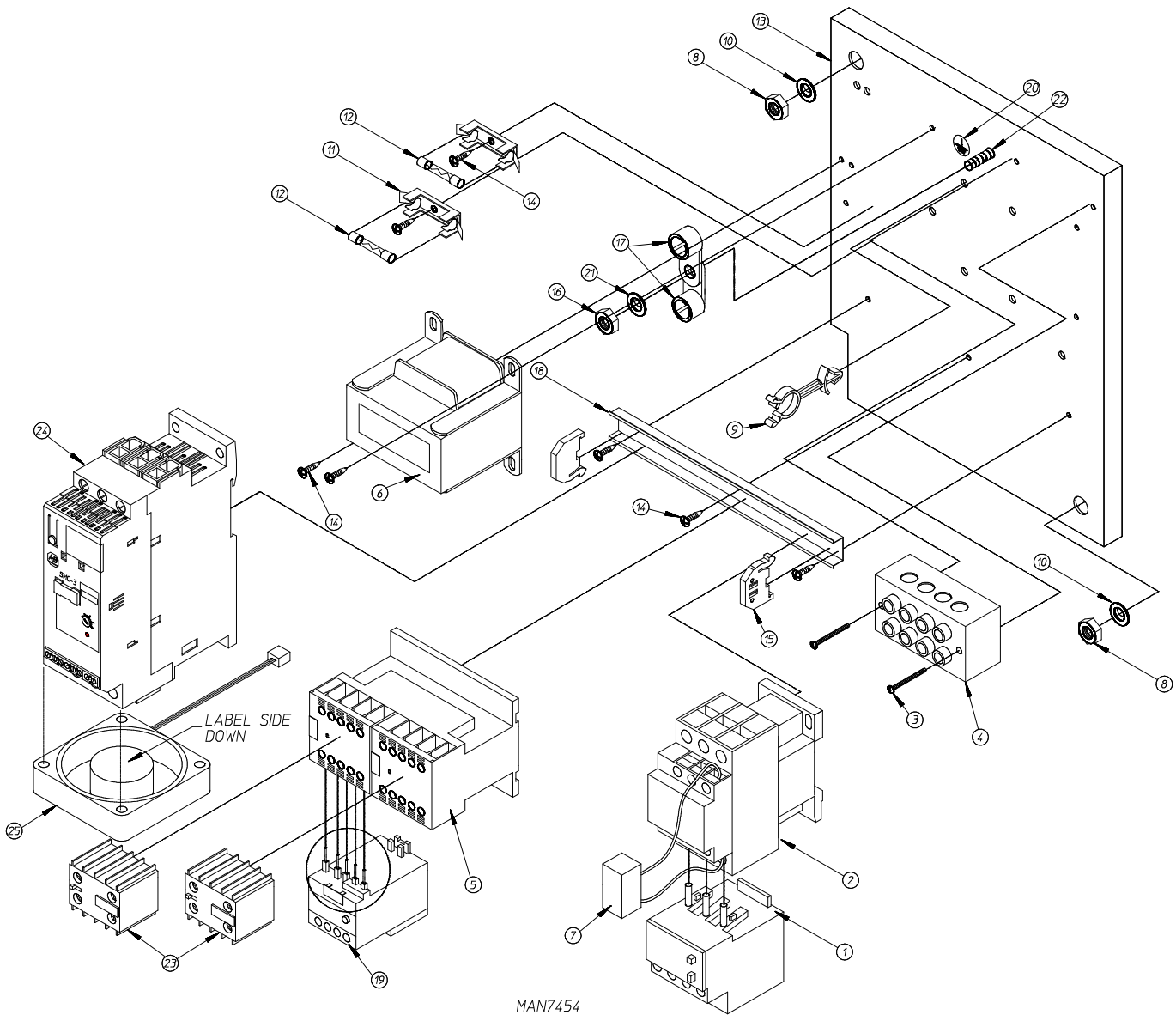
<u>Illus. No.</u>	<u>Part No.</u>	<u>Qty.</u>	<u>Description</u>
1	100496	1	1/8" Needle Valve
2	143238	3	1/8" Close Nipple
3	100498	2	3-Way Micro Valve Only – 24VAC
	821104	1	Pneumatic Valve Assembly Complete (includes illus. nos. 1 through 10)
4	143223	1	1/8" F.P.T. Brass Tee
5	150002	2	#6-32 x 1" Slotted Machine Screw
6	330987	1	Micro Valve Support Bracket Only
7	153010	2	#6 Star Washer
8	152000	2	#6-32 Hex Nut
9	100520	2	1/8" N.P.T. Silencer (muffler)
10	100472	2	1/4" x 1/8" Connector



<u>Illus. No.</u>	<u>Part No.</u>	<u>Qty.</u>	<u>Description</u>
1	332700	1	Air Jet Tube
2	143287	1	1/4" x 1/8" M.P.T. Male Run Tee
3	143259	2	1/4" x 1/8" F.P.T. Bulkhead Fitting
4	143100	36	1/4" Aluminum Tube (sold by the inch)
5	821081	1	Air Jet Mounting Plate Assembly (includes illus. nos. 1 through 9)
	332531	1	Air Jet Mounting Plate Only
6	152002	2	1/4-20 Hex Nut
7	153007	2	1/4" Lock Washer
8	143110	5	1/4" Poly-Flo Tubing (sold by the foot)
9	143149	1	1/4" x 1/8" M.P.T. x 90° Elbow

Reversing Relay Panel Assembly

For 208-240 Volts for Models Mfd. as of January 25, 2006



Reversing Relay Panel Assembly

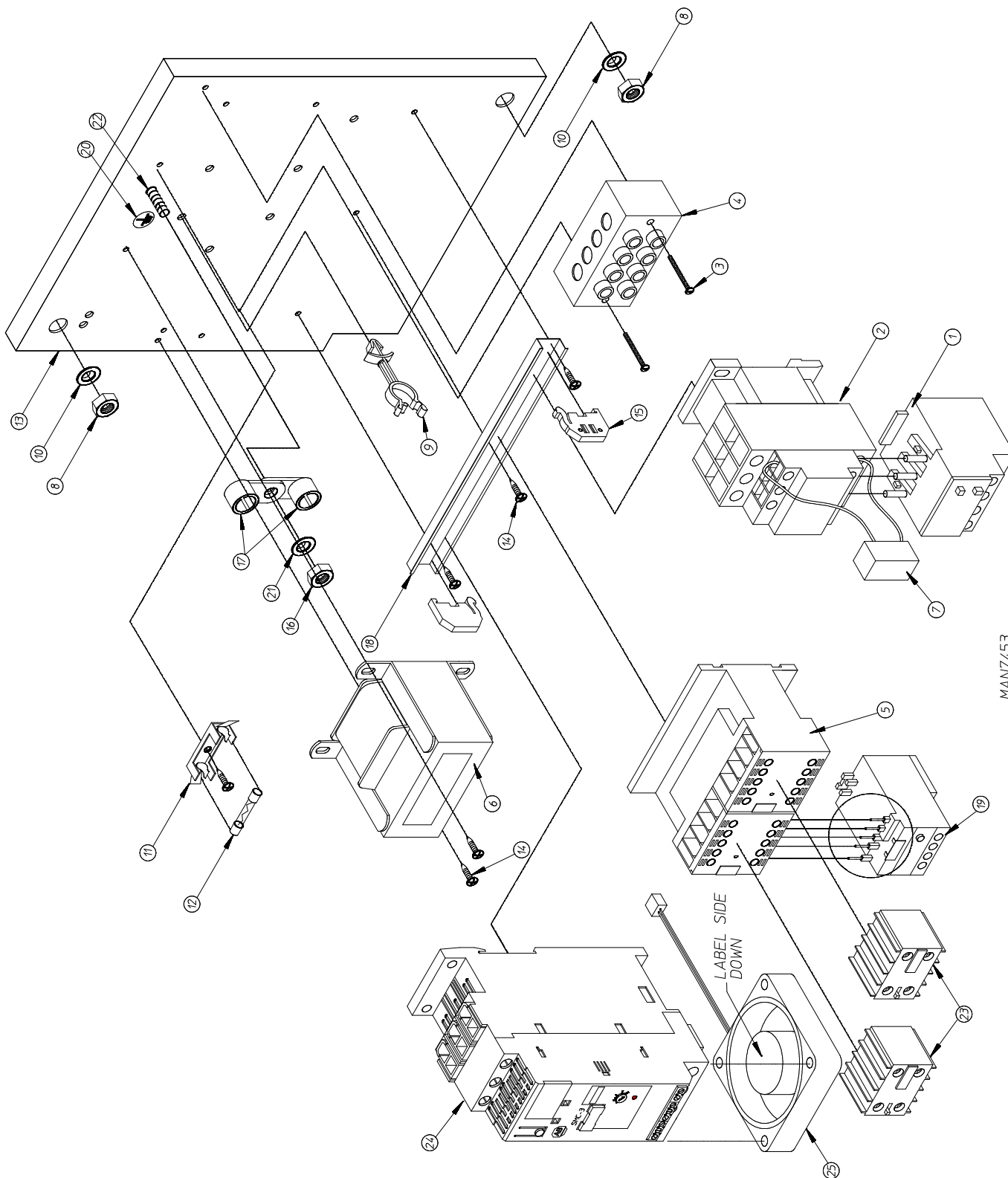
For 208-240 Volts for Models Mfd. as of January 25, 2006

<u>Illus. No</u>	<u>Part No.</u>	<u>Qty.</u>	<u>Description</u>
1	801890*	1	5-27A Overload Assembly
2	131393*	1	32-amp Contactor
3	150539	2	#8 x 1-1/4" Phillips Pan Head Zinc Screw
4	120701	1	4-Position Terminal Block
5	131387*	1	Reversing Contactor with Coil Suppression
6	822764	1	208-240V Transformer Assembly
7	137015	1	Arc Suppressor with 3" Leads
8	152004	2	5/16-18 Hex Nut
9	121502	1	1/2" Wire Standoff
10	153002	2	5/16" Lock Washer
11	136008	2	Fuse Holder
12	136057	2	1/2-amp 3AG Slo-Blo Fuse
13	322346	1	Relay Panel
14	150301	7	#8-18 x 7/16" Phillips Head TEK Screw
15	120774	2	End Stop for Din Rail
16	152002	1	1/4-20 Hex Nut
17	121010	2	L70 14-4 Terminal Lug
18	120768	8-1/2"	Din Rail (sold by the inch)
19	801890*	1	5-27 Overload Assembly
20	112075	1	Ground Label
21	153021	1	1/4" Lock Washer
22	153525	1	1/4-20 x 1" Self-Clinching Stud
23	131391*	2	Auxiliary Contact Block 2 Normally Open
24	132275	1	Softstart 16A 100-240VAC Control
25	132282	1	Softstart Fan

* When replacing connecting components it may be necessary to replace both components. Contact factory for additional information.

Reversing Relay Panel Assembly

For 380-416 Volts for Models Mfd. as of January 26, 2006



MAN7453

Reversing Relay Panel Assembly

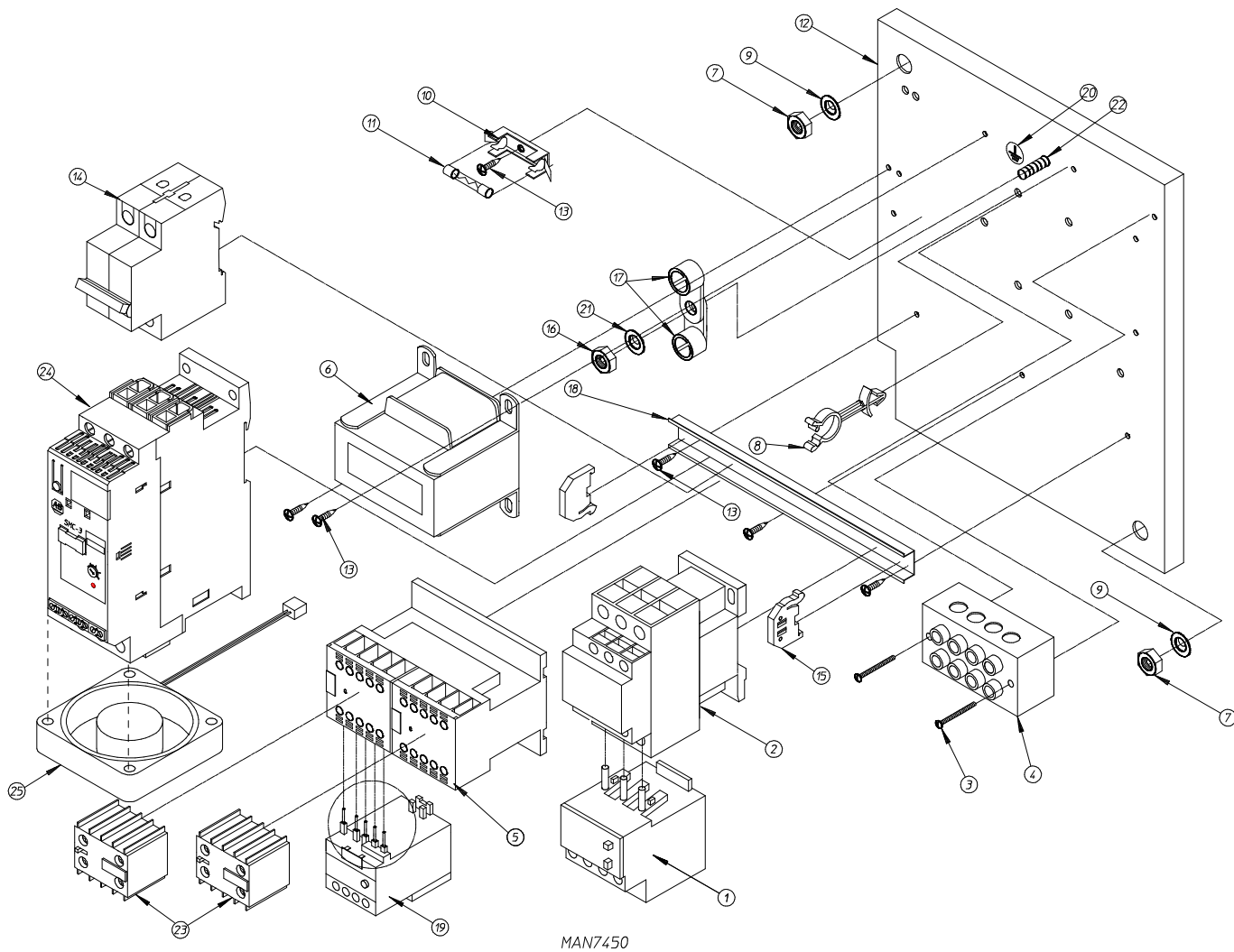
For 380-416 Volts for Models Mfd. as of January 26, 2006

<u>Illus. No.</u>	<u>Part No.</u>	<u>Qty.</u>	<u>Description</u>
1	801890*	1	5-27 Overload Assembly
2	131393*	1	18-amp Contactor
3	150539	2	#8 x 1-1/4" Phillips Pan Head Zinc Screw
4	120701	1	4-Position Terminal Block
5	131383*	1	Reversing Contactor with Coil Suppression
6	830211	1	380-416V Transformer Assembly
7	137015	1	Arc Suppressor with 3" Leads
8	152004	2	5/16-18 Hex Nut
9	121502	1	1/2" Wire Standoff
10	153002	2	5/16" Lock Washer
11	136008	1	Fuse Holder
12	136049	1	3/4-amp 3AG Slo-Blo Fuse
13	322346	1	Relay Panel
14	150301	7	#8-18 x 7/16" Phillips Head TEK Screw
15	120774	2	End Stop for Din Rail
16	152002	1	1/4-20 Hex Nut
17	121010	2	L70 14-4 Terminal Lug
18	120768	8-1/2"	Din Rail (sold by the inch)
19	801891*	1	1-5A Overload Assembly
20	112075	1	Ground Label
21	153021	1	1/4" Lock Washer
22	153525	1	1/4-20 x 1" Self-Clinching Stud
23	131391*	2	Auxiliary Contact Block 2 Normally Open
24	132276	1	Softstart 9A 100-240VAC Control
25	132282	1	Softstart Fan

* When replacing connecting components it may be necessary to replace both components. Contact factory for additional information.

Reversing Relay Panel Assembly

For 460-480 Volts for Models Mfd. as of February 1, 2006



Reversing Relay Panel Assembly

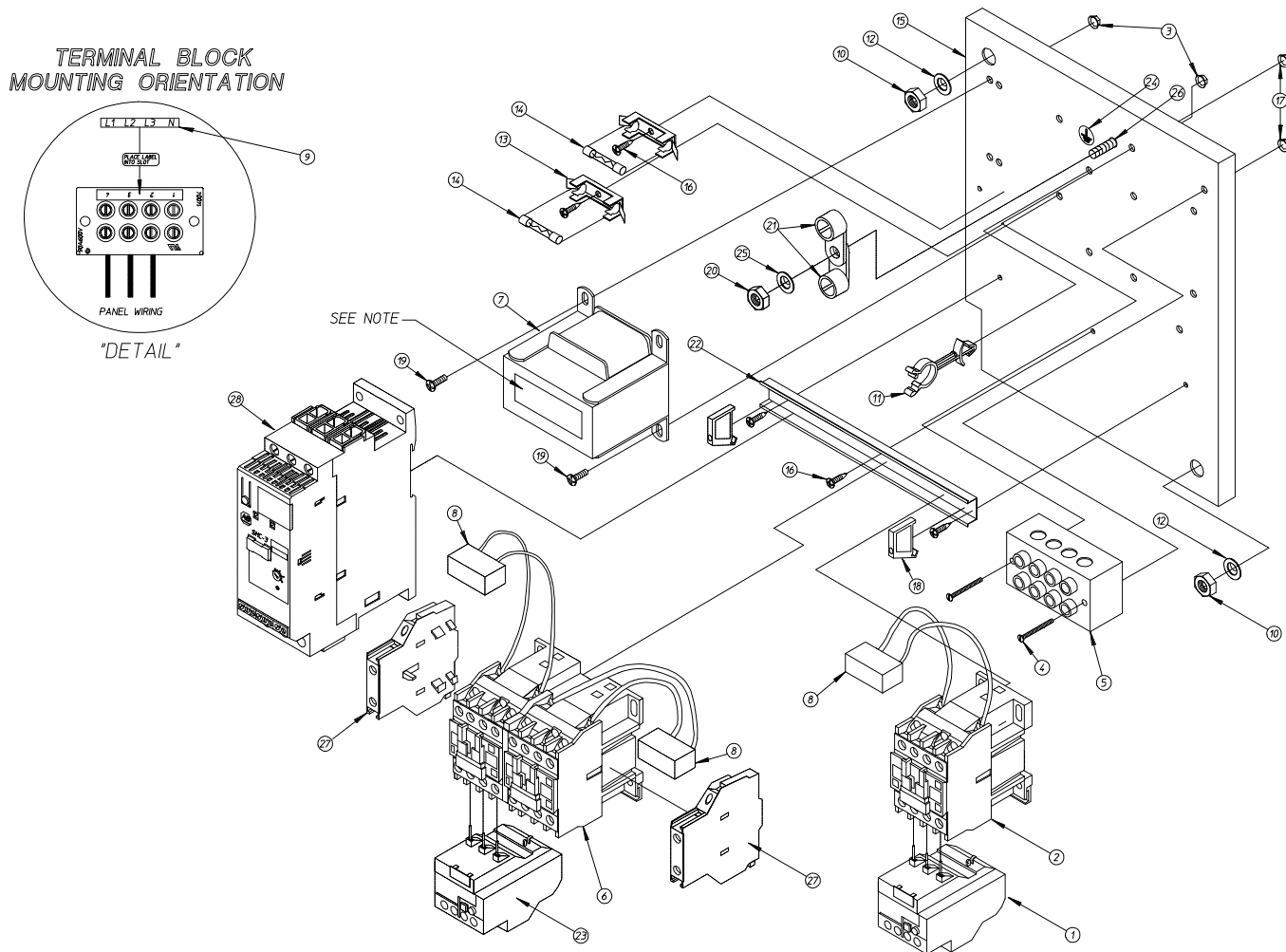
For 460-480 Volts for Models Mfd. as of February 1, 2006

<u>Illus. No.</u>	<u>Part No.</u>	<u>Qty.</u>	<u>Description</u>
1	801890*	1	5-27A Overload Assembly
2	131393*	1	18-amp Contactor
3	150539	2	#8 x 1-1/4" Phillips Pan Head Zinc Screw
4	120701	1	4-Position Terminal Block
5	131383*	1	Reversing Contactor
6	823252	1	460V Transformer Assembly
7	152004	2	5/16-18 Hex Nut
8	121502	1	1/2" Wire Standoff
9	153002	2	5/16" Lock Washer
10	136008	1	Fuse Holder
11	136057	1	1/2-amp 3AG Slo-Blo Fuse
12	322346	1	Relay Panel
13	150301	7	#8-18 x 7/16" Phillips Head TEK Screw
14	136113	1	Double Pole Class CC Fuse Holder
	136119	2	3/4-amp Time Delay CC Fuse
15	120774	2	End Stop for Din Rail
16	152002	1	1/4-20 Hex Nut
17	121010	2	L70 14-4 Terminal Lug
18	120768	8-1/2"	Din Rail (sold by the inch)
19	801891*	1	1-5A Overload Assembly
20	112075	1	Ground Label
21	153021	1	1/4" Lock Washer
22	153525	1	1/4-20 x 1" Self-Clinching Stud
23	131391*	2	Auxiliary Contact Block 2 Normally Open
24	132276	1	Softstart 9A 100-240VAC Control
25	132282	1	Softstart Fan

* When replacing connecting components it may be necessary to replace both components. Contact factory for additional information.

Microprocessor Reversing Contactor Mounting Panel Assembly

For 208-240 Volt Transformers for Models Mfd. between August 29, 2002 and January 24, 2006



DMG 9/23/02

MAN6279

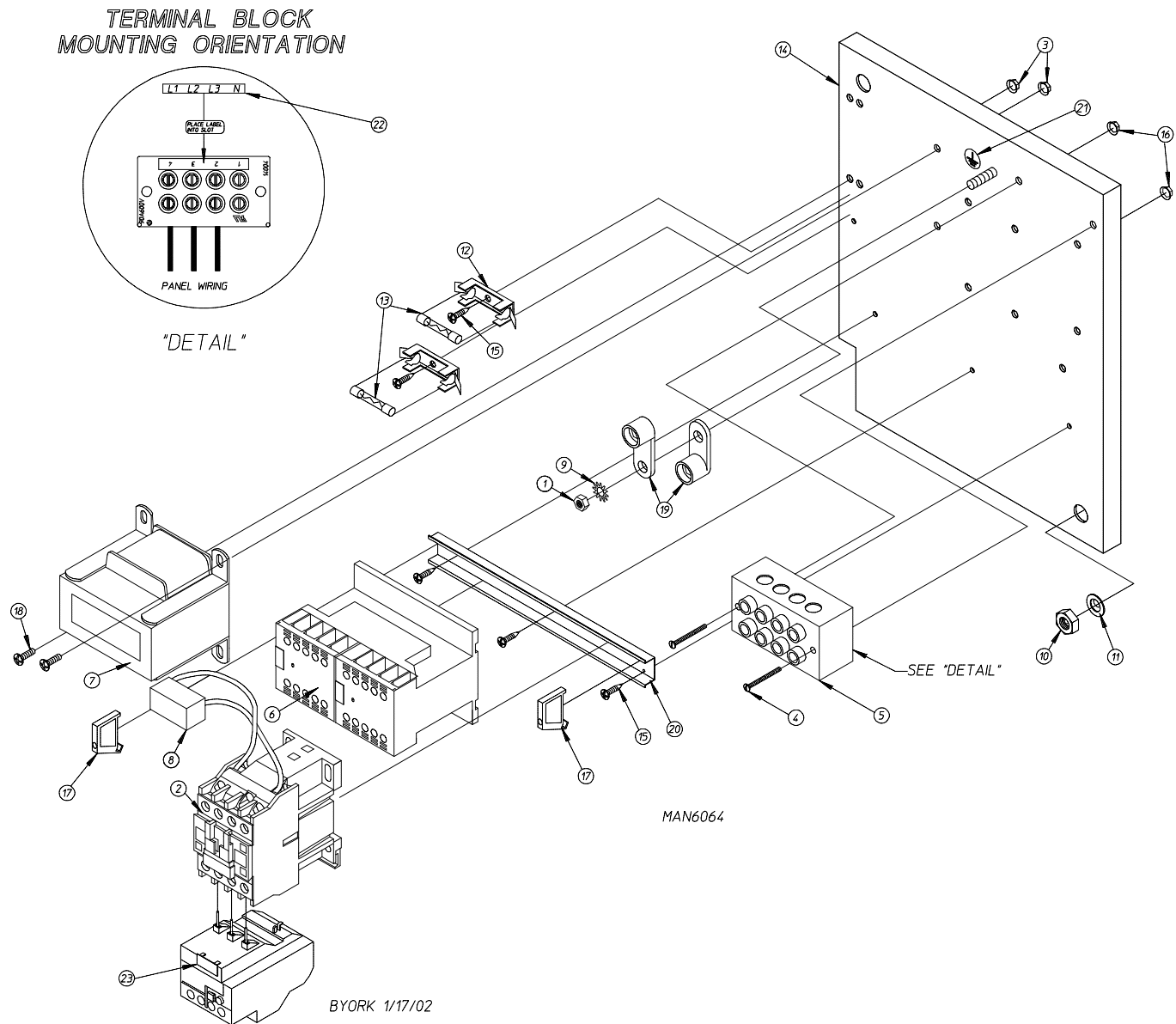
Microprocessor Reversing Contactor Mounting Panel Assembly

For 208-240 Volt Transformers for Models Mfd. between August 29, 2002 and January 24, 2006

<u>Illus. No.</u>	<u>Part No.</u>	<u>Qty.</u>	<u>Description</u>
1	132439	1	17-25A Overload
2	132465	1	10 hp Contactor
3	151001	2	#8-32 Pal Nut
4	150009	2	#6-32 x 1-1/2" Phillips Pan Head Machine Screw
5	120701	1	4-Position Terminal Block
6	132531	1	3 hp "D Line" Reversing Contactor
7	822745	1	208-240V Transformer Assembly
8	137015	3	Arc Suppressor with 3" Leads
9	112068	1	3ø Power Input Label
10	152004	2	5/16-18 Hex Nut
11	121502	1	1/2" Wire Standoff
12	153002	2	5/16" Lock Washer
13	136008	2	Fuse Holder
14	136057	2	1/2-amp 3AG (Slo-Blo) Fuse
15	332346	1	Relay Panel
16	150301	5	#8-18 x 7/16" Phillips Head TEK Screw
17	151000	2	#6-32 Pal Nut
18	120765	2	End Stop
19	150108	2	#8-32 x 1/2" Phillips Pan Head Machine Screw
20	152002	1	1/4-20 Hex Nut
21	121010	2	L-70 #14-4 Terminal Lug
22	120768	9-7/8"	35 x 15mm Din Rail
23	132467	1	9-13A Overload
24	112075	1	Ground Label
25	153021	1	1/4" Lock Washer
26	153525	1	1/4-20 x 1" Self-Clinching Stud
27	132383	2	Auxiliary Contact Block 2 Normally Open
28	132276	1	Softstart 9A 100-240 VAC Control
—	822811	1	Relay Panel Wiring with Softstart ... Not Illustrated
—	825267	1	Drive and Blower Motor Contactor Wiring ... Not Illustrated

Microprocessor Reversing Contactor Mounting Panel Assembly

For 208-240 Volt Transformers for Models Mfd. prior to August 29, 2002



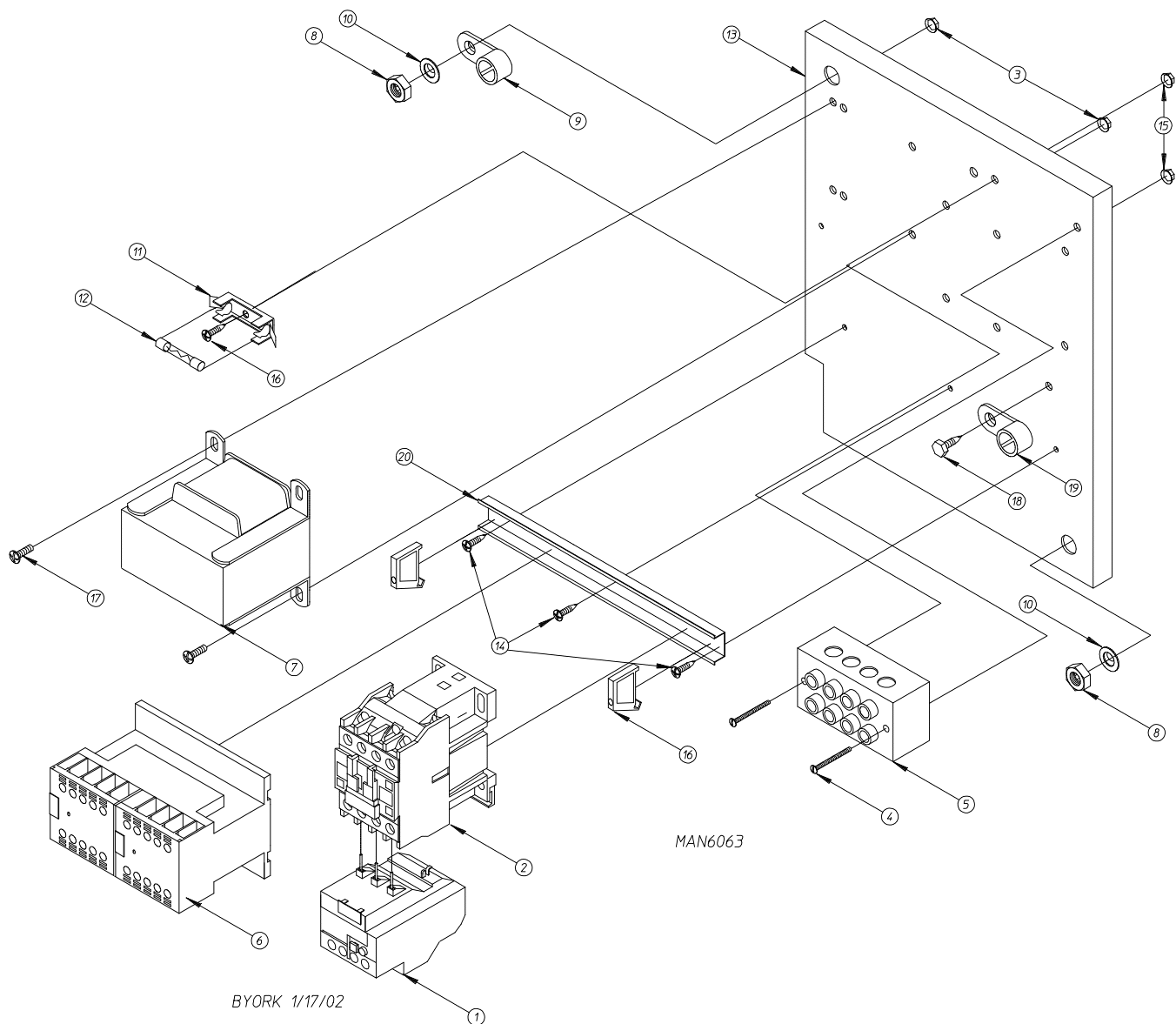
Microprocessor Reversing Contactor Mounting Panel Assembly

For 208-240 Volt Transformers for Models Mfd. prior to August 29, 2002

<u>Illus. No.</u>	<u>Part No.</u>	<u>Qty.</u>	<u>Description</u>
1	152002	1	1/4-20 Hex Nut
2	132465	1	3 hp Contactor – 24 VAC
3	151001	2	#8-32 Pal Nut
4	150009	2	#6-32 x 1-1/4" Phillips Round Head Machine Screw
5	120701	1	4-Position Power Distribution Block
6	132497	1	Reversing Contactor – 24 VAC
7	822745	1	208-240V Transformer Assembly
8	137015	1	Arc Suppressor Board
9	153021	1	1/4" Star Washer
10	152004	1	5/16-18 Hex Nut
11	153002	1	5/16" Lock Washer
12	136008	2	Fuse Block / Holder
13	136057	2	1/2-amp (Slo-Blo) Fuse
14	332346	1	Contacto / Relay Mounting Panel
15	150301	5	#8-18 x 7/16" Phillips Pan Head TEK Screw
16	151000	2	#6-32 Pal Nut
17	120765	2	End Stop / Bracket
18	150108	2	#8-32 x 1/2" Pan Head Machine Screw
19	121010	1	L-70 Ground Lug
20	120768	7-3/4"	Din Mounting Rail (sold by the inch)
21	112075	1	Ground Label
22	112068	1	3ø Power Input Label
23	132439	1	Overload
—	825267	1	Contacto Wiring ... Not Illustrated
—	829053	1	Relay Panel Wiring ... Not Illustrated

Microprocessor Reversing Contactor Mounting Panel Assembly

For 380-416 Volt Transformers for Models Mfd. prior to August 29, 2002



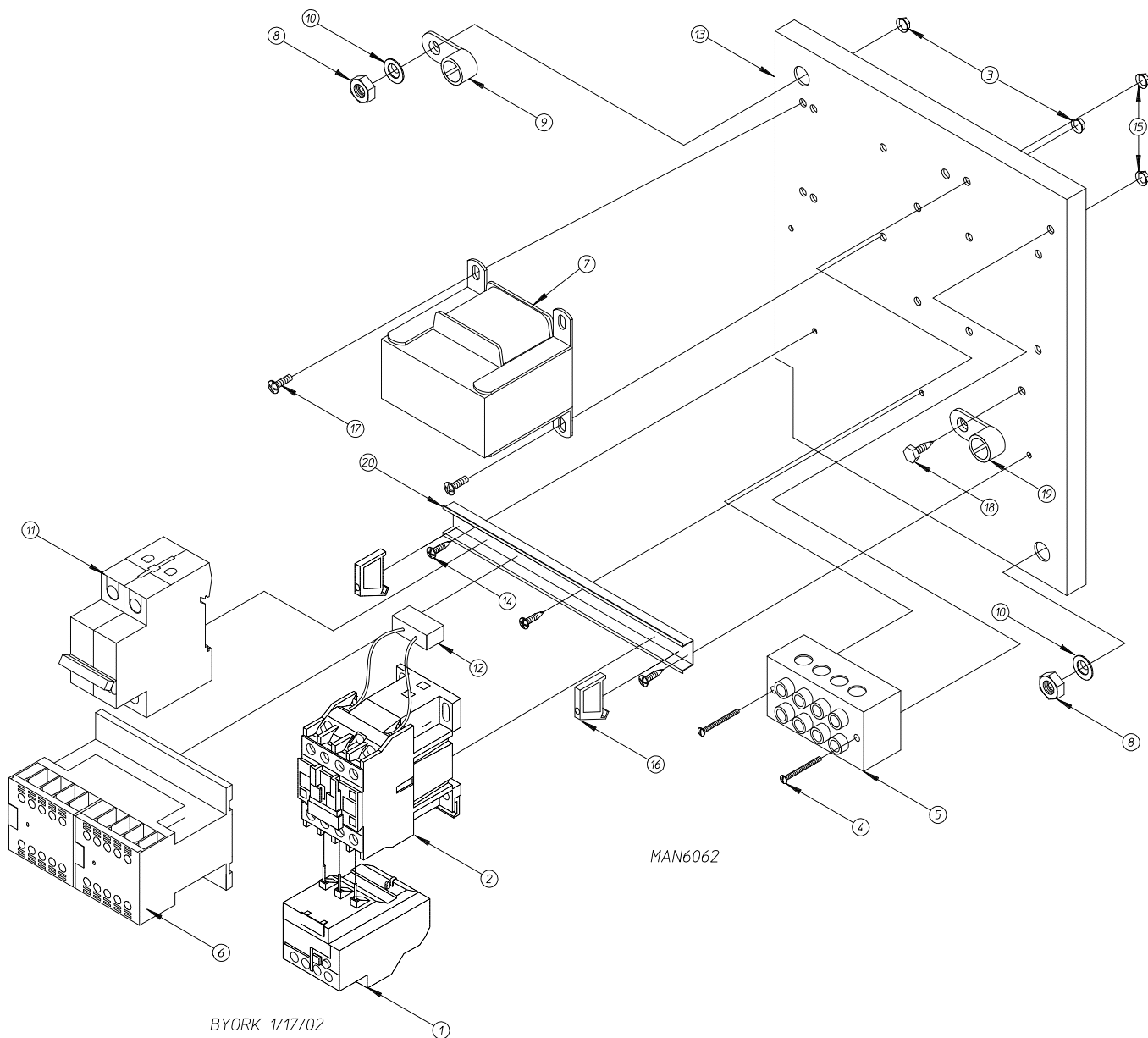
Microprocessor Reversing Contactor Mounting Panel Assembly

For 380-416 Volt Transformers for Models Mfd. prior to August 29, 2002

<u>Illus. No.</u>	<u>Part No.</u>	<u>Qty.</u>	<u>Description</u>
1	132467	1	9-13A Overload
2	132465	1	10 hp Contactor – 24 VAC
3	151001	2	#8-32 Pal Nut
4	150009	2	#6-32 x 1-1/2" Phillips Round Head Machine Screw
5	120701	1	4-Position Power Distribution Block
6	132497	1	"Kline" Reversing Contactor
7	801580	1	Transformer (380-416 volt / 3 ϕ)
8	152004	2	5/16-18 Hex Nut
9	121012	1	Ground Lug
10	153002	2	5/16" Lock Washer
11	136008	1	Fuse Block / Holder
12	136057	1	1/2-amp (Slo-Blo) Fuse
13	332346	1	Contactor / Relay Mounting Panel
14	150301	4	#8-18 x 7/16" Phillips Pan Head TEK Screw
15	151000	2	#6-32 Pal Nut
16	120765	2	End Stop / Bracket
17	150108	2	#8-32 x 1/2" Pan Head Machine Screw
18	150297	1	#10 x 1/2" Hex Washer TEK Screw
19	121010	1	L-70 Ground Lug
20	120768	7-3/4"	Din Mounting Rail (sold by the inch)
—	830180	1	Relay Panel Wiring ... Not Illustrated
—	825267	1	Drive / Blower Motor Contactor Wiring ... Not Illustrated

Microprocessor Reversing Contactor Mounting Panel Assembly

For 460-480 Volt Transformers for Models Mfd. prior to August 29, 2002

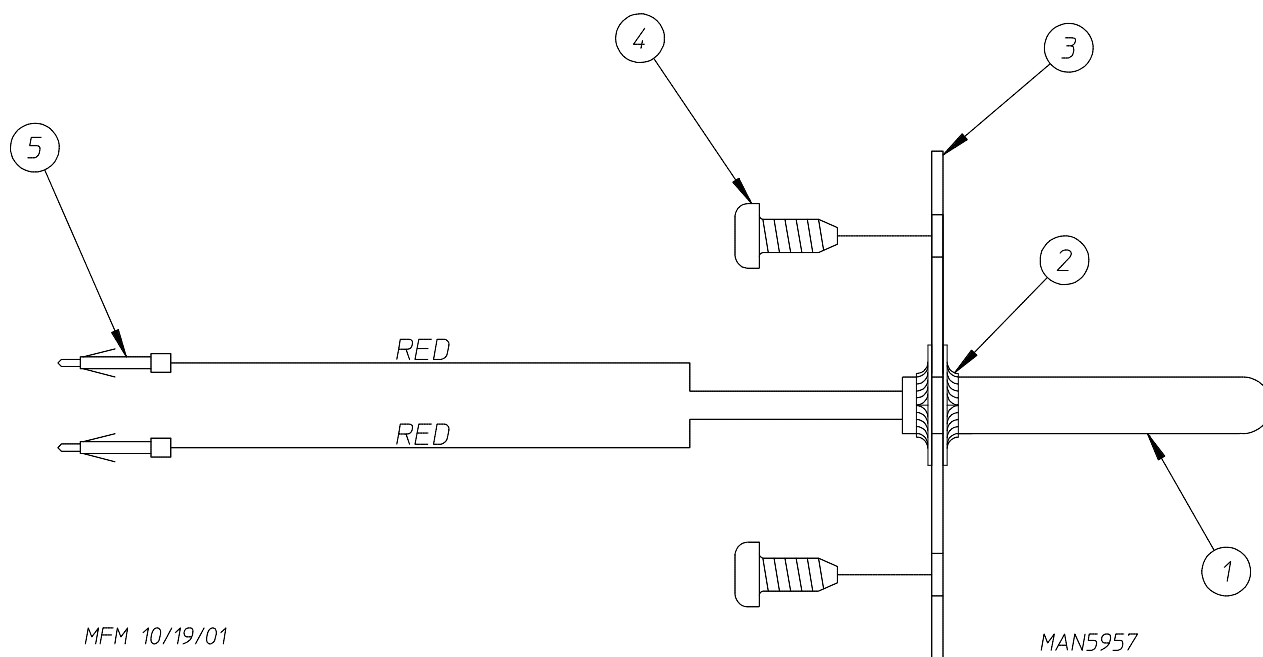


Microprocessor Reversing Contactor Mounting Panel Assembly

For 460-480 Volt Transformers for Models Mfd. prior to August 29, 2002

<u>Illus. No.</u>	<u>Part No.</u>	<u>Qty.</u>	<u>Description</u>
1	132467	1	9-13A Overload
2	132465	1	10 hp Contactor – 24 VAC
3	151001	2	#8-32 Pal Nut
4	150009	2	#6-32 x 1-1/2" Phillips Round Head Machine Screw
5	120701	1	4-Position Terminal Block
6	132497	1	"Kline" Reversing Contactor
7	830193	1	460-480V Transformer Assembly
8	152004	2	5/16-18 Hex Nut
9	121012	1	Ground Lug
10	153002	2	5/16" Lock Washer
11	135501	1	2-Pole 1-amp Circuit Breaker
12	137015	1	Arc Suppressor
13	332346	1	Relay Panel
14	150301	4	#8-18 x 7/16" Phillips Pan Head TEK Screw
15	151000	2	#6-32 Pal Nut
16	120765	2	End Stop / Bracket
17	150108	2	#8-32 x 1/2" Pan Head Machine Screw
18	150297	1	#10 x 1/2" Hex Washer TEK Screw
19	121010	1	L-70 Ground Lug
20	120768	7-3/4"	Din Mounting Rail (sold by the inch)
—	830192	1	Relay Panel Wiring ... Not Illustrated
—	825267	1	Drive / Blower Motor Contactor Wiring ... Not Illustrated

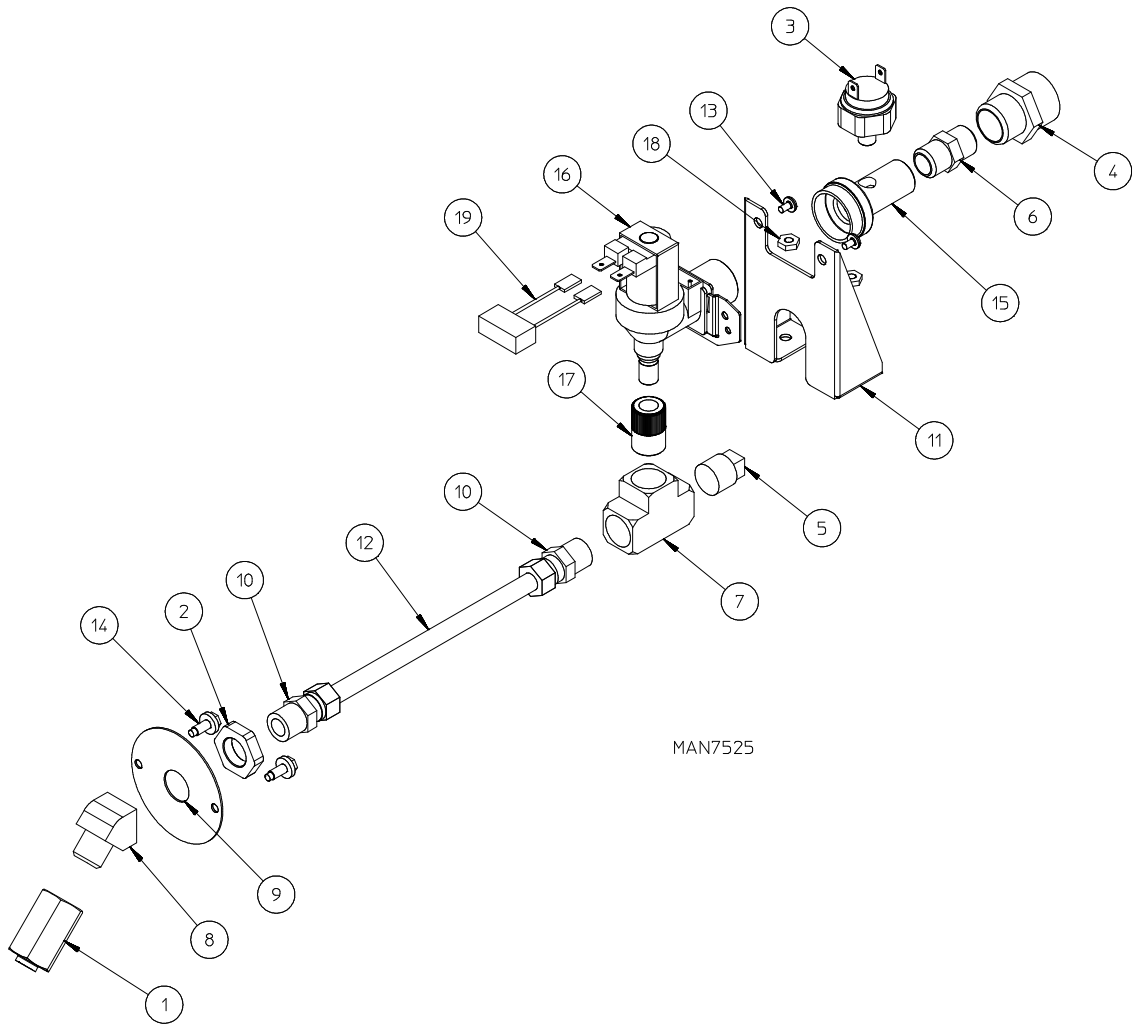
Fire Suppression System Temperature Probe Assembly



<u>Illus. No.</u>	<u>Part No.</u>	<u>Qty.</u>	<u>Description</u>
1	822752	1	Fire Suppression System Temperature Probe Assembly (includes illus. nos. 1 through 5)
2	154007	2	Push-On Fastener
3	390390	1	Sensor Bracket
4	150301	2	#8-18 Phillips Pan Head TEK Screw
5	122647	1	Connector ... Not Illustrated (does not include pins)
	122700	2	Pin

Fire Suppression System Solenoid Assembly

For Models Mfd. as of September 23, 2004

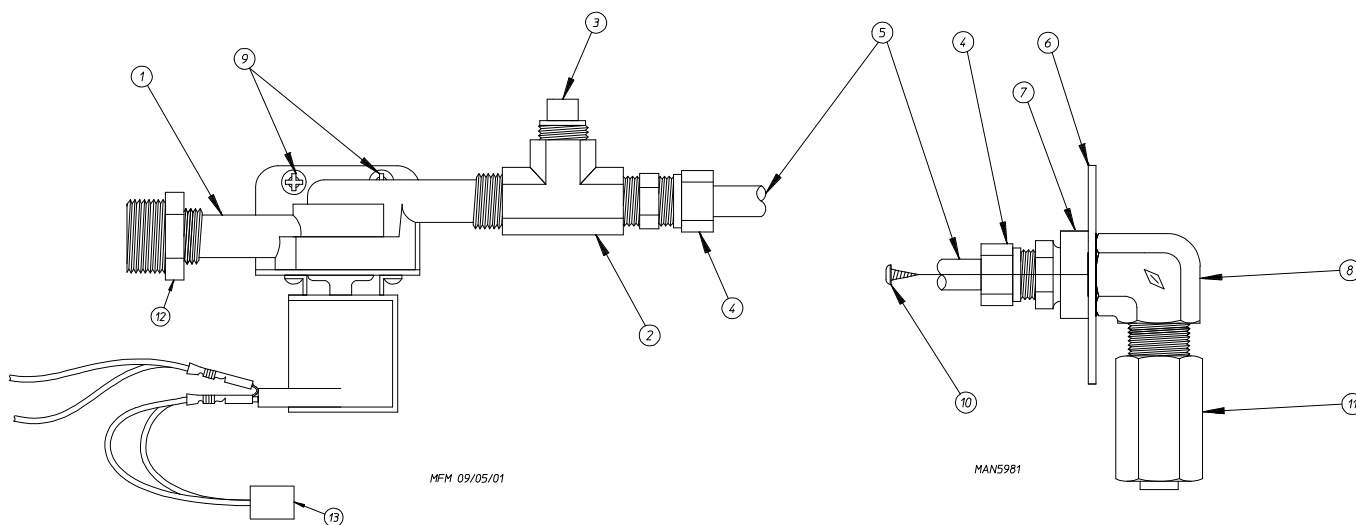


MAN7525

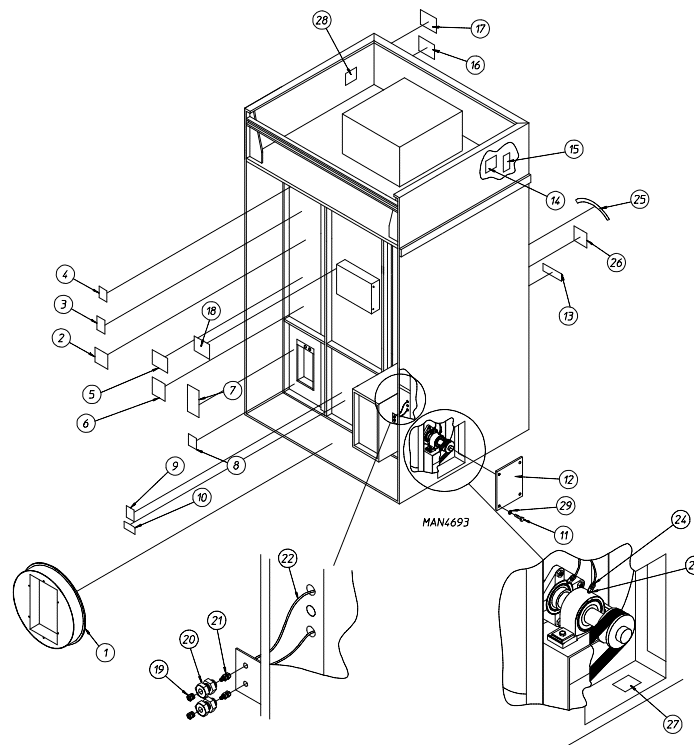
<u>Illus. No.</u>	<u>Part No.</u>	<u>Qty.</u>	<u>Description</u>
1	143581	1	Fire Suppression System 3 GPM 3/8" N.P.T. Spray Nozzle
2	143303	1	3/8" N.P.T. Brass Lock Nut
3	136987	1	Water Jet Pressure Switch
4	143025	1	3/4"-11.5 NH x 3/8" N.P.T. Nylon Hose Adapter
5	143251	1	3/8" M.P.T. Brass Plug
6	182579	1	3/8" M.P.T. x 3/8" M.P.T. Brass Hex Nipple
7	143220	1	3/8" F.P.T. Brass Tee
8	143301	1	3/8" Brass 45° Street Elbow
9	311588	1	Fire Suppression System Sprinkler Head Mounting Plate
10	143208	2	3/8" Comp x 3/8" M.P.T. Brass Connector
11	311587	1	Medium Dryer Fire Suppression System Valve Bracket
12	143108	1	20" Stainless Steel Flex Hose with 3/8" Compression
13	154338	2	M4 x 6mm Phillips Head Slotted Machine Screw
14	150309	2	#10-16 x 1/2" Hex Head TEK Crimptite
15	143182	1	3/4" GHT x 1/8" x 3/8" N.P.T. Brass Tee
16	165119	1	Fire Suppression System Water Inlet Valve
17	143183	1	7/16-20 x 3/8" N.P.T. Brass Adapter 2
18	152001	2	#8-32 3/8" Hex Nut
19	824081	1	R.C. Network Assembly

Fire Suppression System Solenoid Assembly

For Models Mfd. prior to September 23, 2004



<u>Illus. No.</u>	<u>Part No.</u>	<u>Qty.</u>	<u>Description</u>
1	165114	1	Fire Suppression System Solenoid Valve 24V 50/60 Hz
2	143220	1	3/8" F.P.T. Brass Tee
3	143251	1	3/8" M.P.T. Brass Plug
4	143208	2	3/8" Comp x 3/8" M.P.T. Brass Connector
5	143099	6'	3/8" OD x 0.035 Wall Copper Tubing (sold by the foot)
6	311588	1	Sprinkler Head Mounting Plate
7	143303	1	3/8" N.P.T. Brass Locknut
8	143155	1	3/8" Brass Elbow 90°
9	150430	2	#10 x 1/2" Self-Drilling Screw
10	150301	2	#8-18 x 7/16" TEK Screw
11	143581	1	3 GPM 3/8" F.P.T. Spray Nozzle
12	142888	1	1/2" to 3/8" Bushing for Fire Suppression System Valve
13	824828	1	Arc Suppressor



<u>Illus. No.</u>	<u>Part No.</u>	<u>Qty.</u>	<u>Description</u>
1	821793	1	Square Duct to 20" Round Duct Transition Piece Assembly with Damper
	821956	1	Square Duct to 20" Round Duct Transition Piece Assembly
	821720	1	Square Duct to 18" Round Duct Transition Piece Assembly with Damper
	821092	1	Square Duct to 18" Round Duct Transition Piece Assembly
2	_____	1	Wiring Diagram for Dryer (contact factory with model and serial numbers)
3	112046	1	"Computer Ground" Label
4	114005	1	"Danger - Hot" Label
5	112519	1	"Routine Maintenance" Label
6	114044	1	"High Voltage" Label
7	114007	1	"Danger - High Voltage" Label
8	112014	1	"High Voltage" Label
9	114008	1	"Warning - Fumes" Label
10	114001	1	"Caution - Exhaust / Lint Screen" Label
11	150512	4	1/4-20 x 1/2" Hex Head Machine Bolt
12	332309	1	Side Access Panel
13	112280	1	"Clean Lint Screen" Label
14	112017	1	"Address" Label (not for resale)
15	_____	1	"Serial Number" Label (not for resale)
16	_____	1	Wiring Diagram (contact factory with specific dryer serial number)
17	114521	1	"Phase 7 Non-Coin Program Location" Label
18	114093	1	"Important Manual Reset Hi-Limit" Label
19	170511	2	1/8" M.P.T. Zirc (grease) Fitting
20	143164	2	1/8" F.P.T. Bulkhead Fitting
21	100472	2	1/4" x 1/8" M.P.T. Male Connector
22	143115	4	1/4" Nylo-Seal Tube
23	100472	2	1/4" x 1/8" M.P.T. Male Connector
24	143246	2	1/4-28 x 18" F.P.T. Fitting
25	114095	1	"Do Not Dry Mop Heads" Label
26	114006	1	"WARNING - Fire Hazard" Label
27	114077	1	"Grease Instruction" Label
28	114093	1	"Important Manual Reset Hi-Limit" Label
29	153007	4	1/4" Lock Washer

