



ML-82
Parts Manual
Phase 7 Microprocessor
with F.S.S. Options

American Dryer Corporation
88 Currant Road
Fall River MA 02720-4781 USA
Telephone: +1 (508) 678-9000 / Fax: +1 (508) 678-9447
e-mail: techsupport@amdry.com

www.adclaundry.com

Retain This Manual In A Safe Place For Future Reference

American Dryer Corporation products embody advanced concepts in engineering, design, and safety. If this product is properly maintained, it will provide many years of safe, efficient, and trouble free operation.

ONLY qualified technicians should service this equipment.

OBSERVE ALL SAFETY PRECAUTIONS displayed on the equipment or specified in the installation manual included with the dryer.

The following “**FOR YOUR SAFETY**” caution must be posted near the dryer in a prominent location.

FOR YOUR SAFETY

Do not store or use gasoline or other flammable vapors and liquids in the vicinity of this or any other appliance.

POUR VOTRE SÉCURITÉ

Ne pas entreposer ni utiliser d'essence ni d'autres vapeurs ou liquides inflammables à proximité de cet appareil ou de tout autre appareil.

We have tried to make this manual as complete as possible and hope you will find it useful. ADC reserves the right to make changes from time to time, without notice or obligation, in prices, specifications, colors, and material, and to change or discontinue models.

Important

For your convenience, log the following information:

DATE OF PURCHASE _____ MODEL NO. **ML-82**
RESELLER'S NAME _____
Serial Number(s) _____

Replacement parts can be obtained from your reseller or the ADC factory. When ordering replacement parts from the factory, you can FAX your order to ADC at (508) 678-9447 or telephone your order directly to the ADC Parts Department at (508) 678-9000. Please specify the dryer model number and serial number in addition to the description and part number, so that your order is processed accurately and promptly.

The illustrations on the following pages may not depict your particular dryer exactly. The illustrations are a composite of the various dryer models. Be sure to check the descriptions of the parts thoroughly before ordering.

“IMPORTANT NOTE TO PURCHASER”

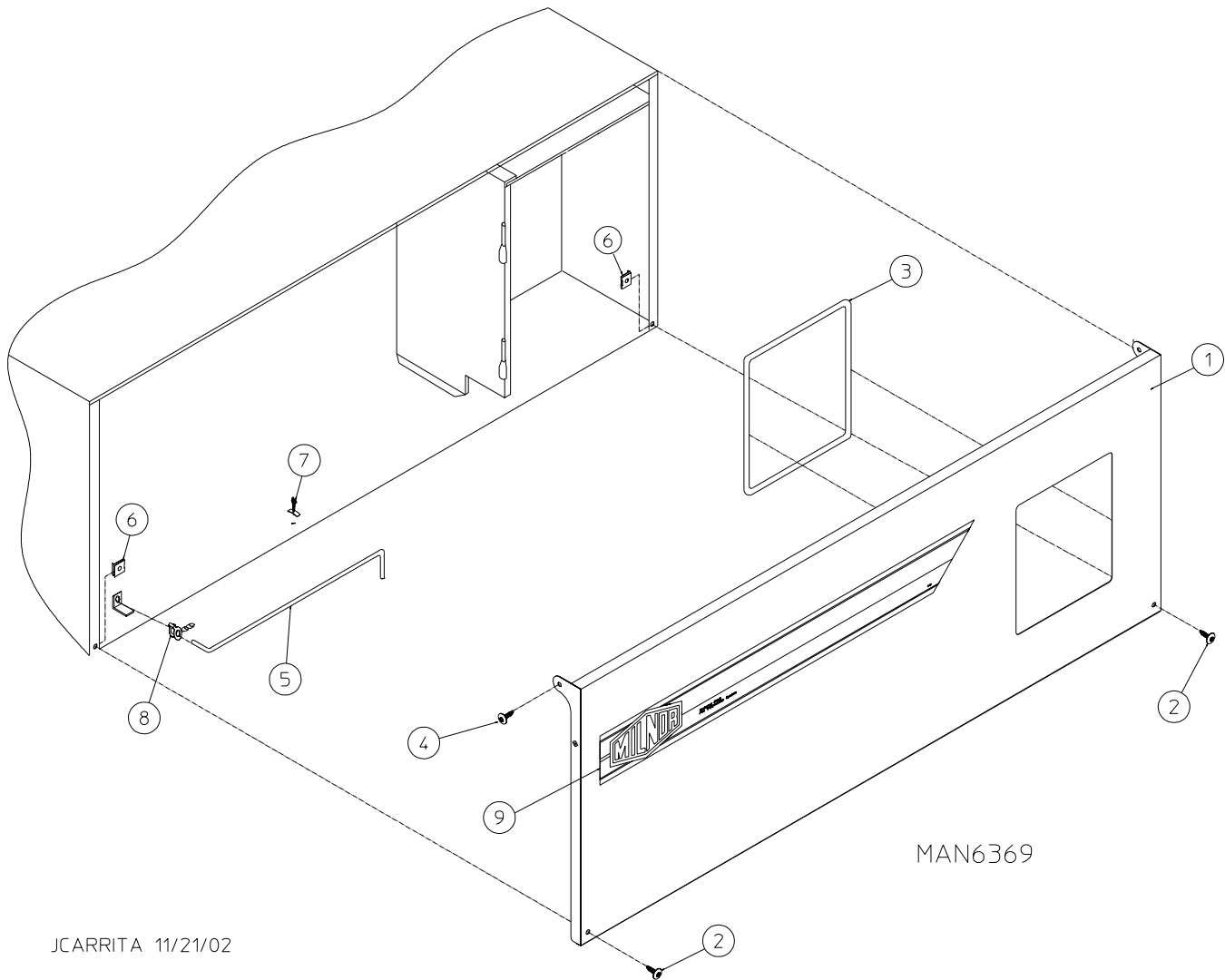
Information must be obtained from your local gas supplier on the instructions to be followed if the user smells gas. These instructions must be posted in a prominent location near the dryer.

Table of Contents

Phase 7 Non-Coin Microprocessor Control Door Assembly for Models Mfd. as of July 10, 2002	4
Control Door Assembly for Models Mfd. between September 24, 2001 and July 9, 2002	5
Control Door Assembly for Models Mfd. prior to September 24, 2001	6
Phase 7 Non-Coin Microprocessor Control Panel Assembly	7
Phase 7 Non-Coin Microprocessor Control Box Assembly	8
Front Panel / Main Door Assemblies	9
Main Door Switch Assembly	10
Front Panel Assembly	11
Lint Drawer / Lint Drawer Switch Assemblies	12
Sensor Bracket Assembly	13
Tumbler / Support Assemblies	14
Tumbler Bearing Assembly for Models Mfd. with Griplock Type Bearings	15
Tumbler Bearing Assembly for Models Mfd. without Griplock Type Bearings	16
Idler Bearing Assembly	17
Reversing T.E.F.C. Motor Mount Assembly	18
Direct Spark Ignition Burner Assembly	20
Hot Surface Ignition Burner Assembly	22
Sail Switch Assembly	24
208-240V Reversing Relay Panel Assembly for Models Mfd. as of January 23, 2003	25
460-480V Reversing Relay Panel Assembly for Models Mfd. as of January 23, 2003	26
208-240V Reversing Relay Panel Assembly for Models Mfd. prior to January 23, 2003	27
460-480V Reversing Relay Panel Assembly for Models Mfd. prior to January 23, 2003	28
Air-Operated Steam Damper Assembly	29
Fire Suppression System Assembly for Models Mfd. as of November 8, 2011	30
Fire Suppression System Assemblies for Models Mfd. prior to November 8, 2011	31
Outer Top / Back Guard Assemblies	32
Additional Parts Available	33

Phase 7 Non-Coin Microprocessor Control Door Assembly

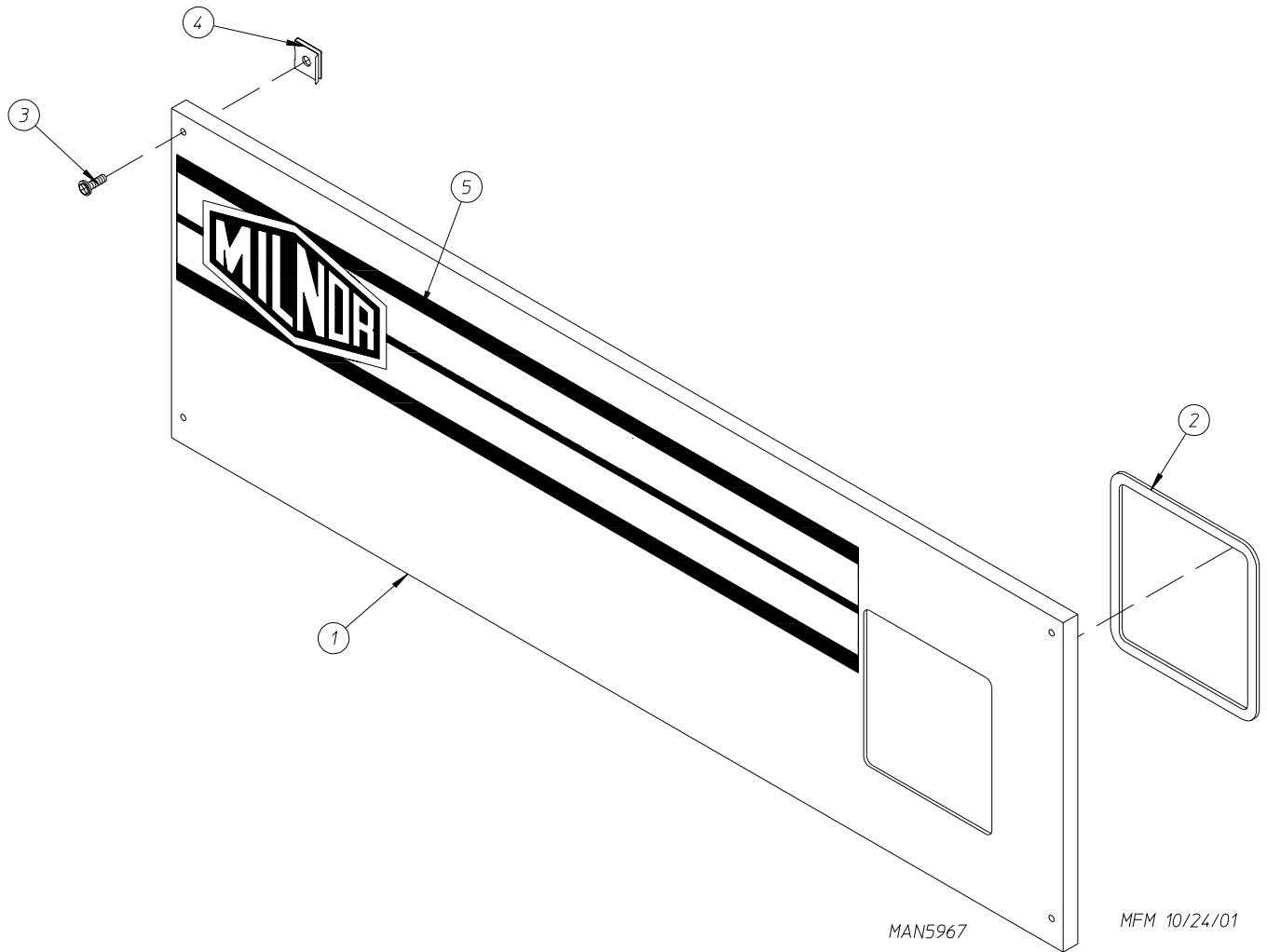
For Models Mfd. as of July 10, 2002



Illus. No.	Part No.	Qty.	Description
1	883576	1	Non-Coin Control Door (includes illus. nos. 1 and 3)
2	150321	2	#10-32 x 1/2" Phillips Machine Screw
3	117604	4	Noise Suppressor Tape (sold by the foot)
4	150317	2	#10-16 x 3/4" TORX PLUS® Btn, Type 1
5	102503	1	Control Door Support Rod
6	154011	2	#10-32 Multi-Thread U-Nut
7	102603	1	Control Door Rod Support Latch
8	102601	1	Control Door Rod Retainer Clip
9	-----*	1	Logo ONLY

* Contact reseller for logo.

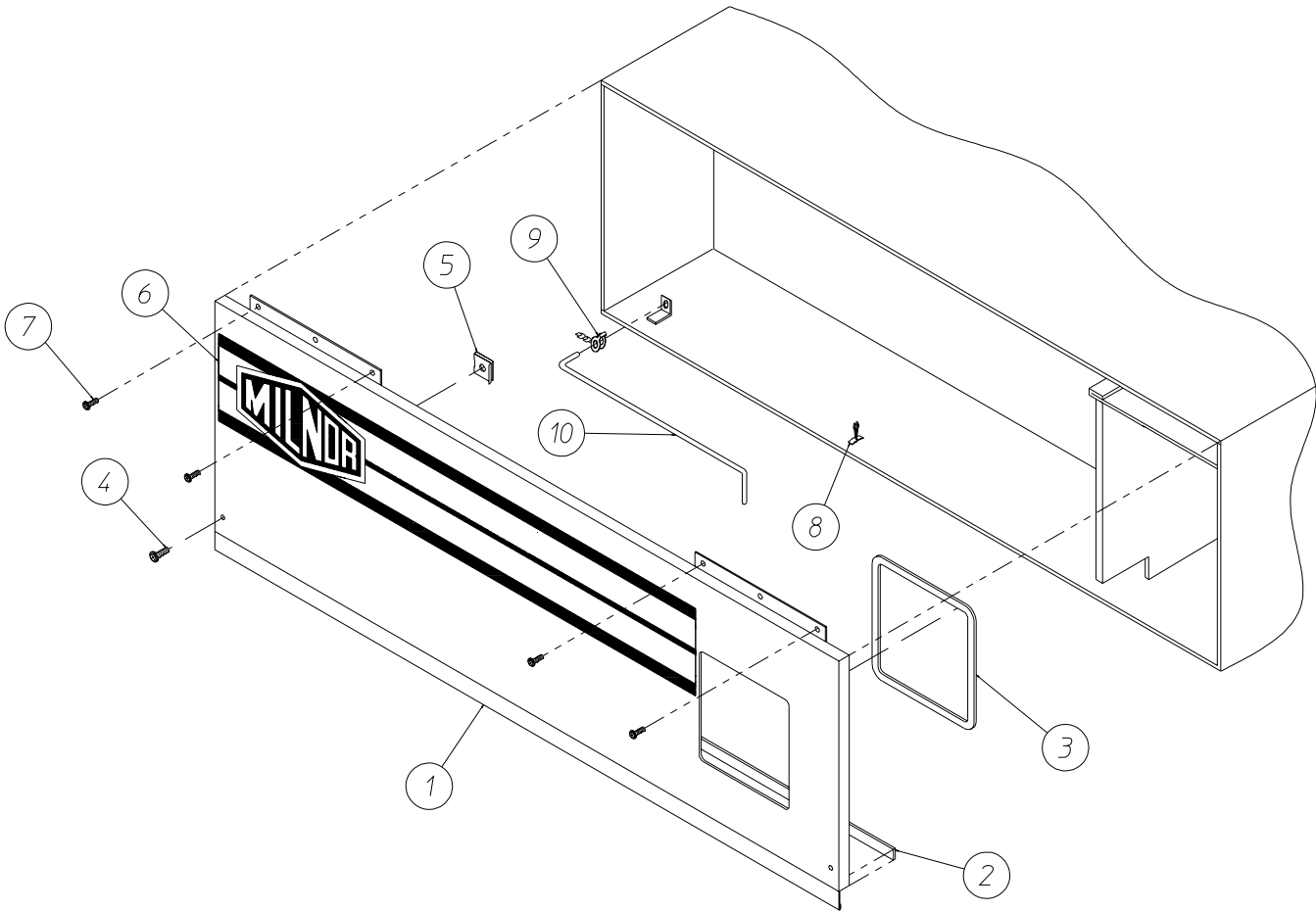
For Models Mfd. between September 24, 2001 and July 9, 2002



<u>Illus. No.</u>	<u>Part No.</u>	<u>Qty.</u>	<u>Description</u>
1	824254	1	Phase 7 Control Door without Hinge (includes illus. nos. 1 and 2)
2	117604	2	Noise Suppressor Tape (sold by the foot)
3	150314	4	#10-32 x 1/2" TORX® Screw
4	154011	4	#10-32 Multi-Thread U-Nut
5	112366	1	Milnor Logo

Control Door Assembly

For Models Mfd. prior to September 24, 2001

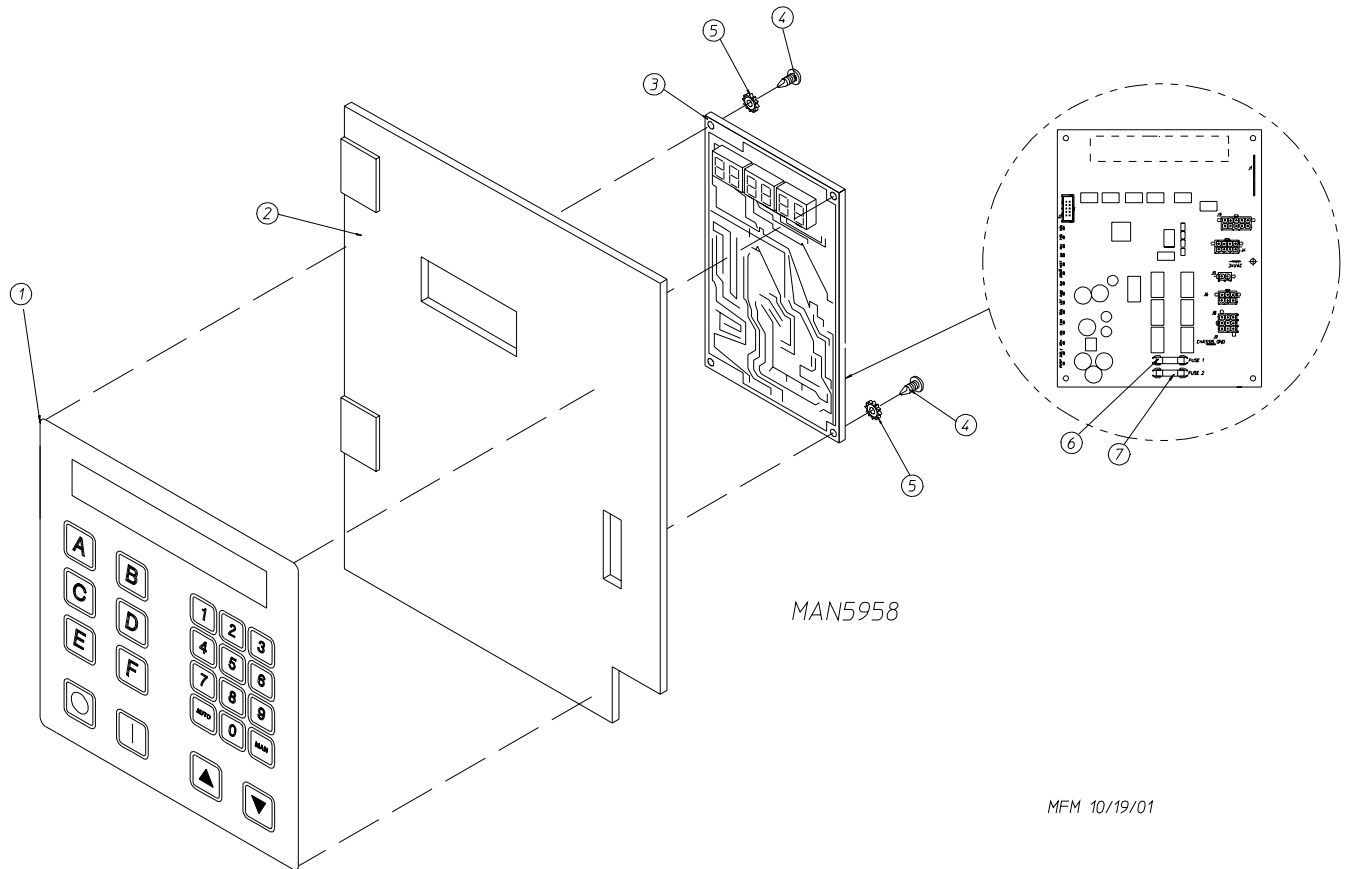


MAN5970

MFM 11/16/01

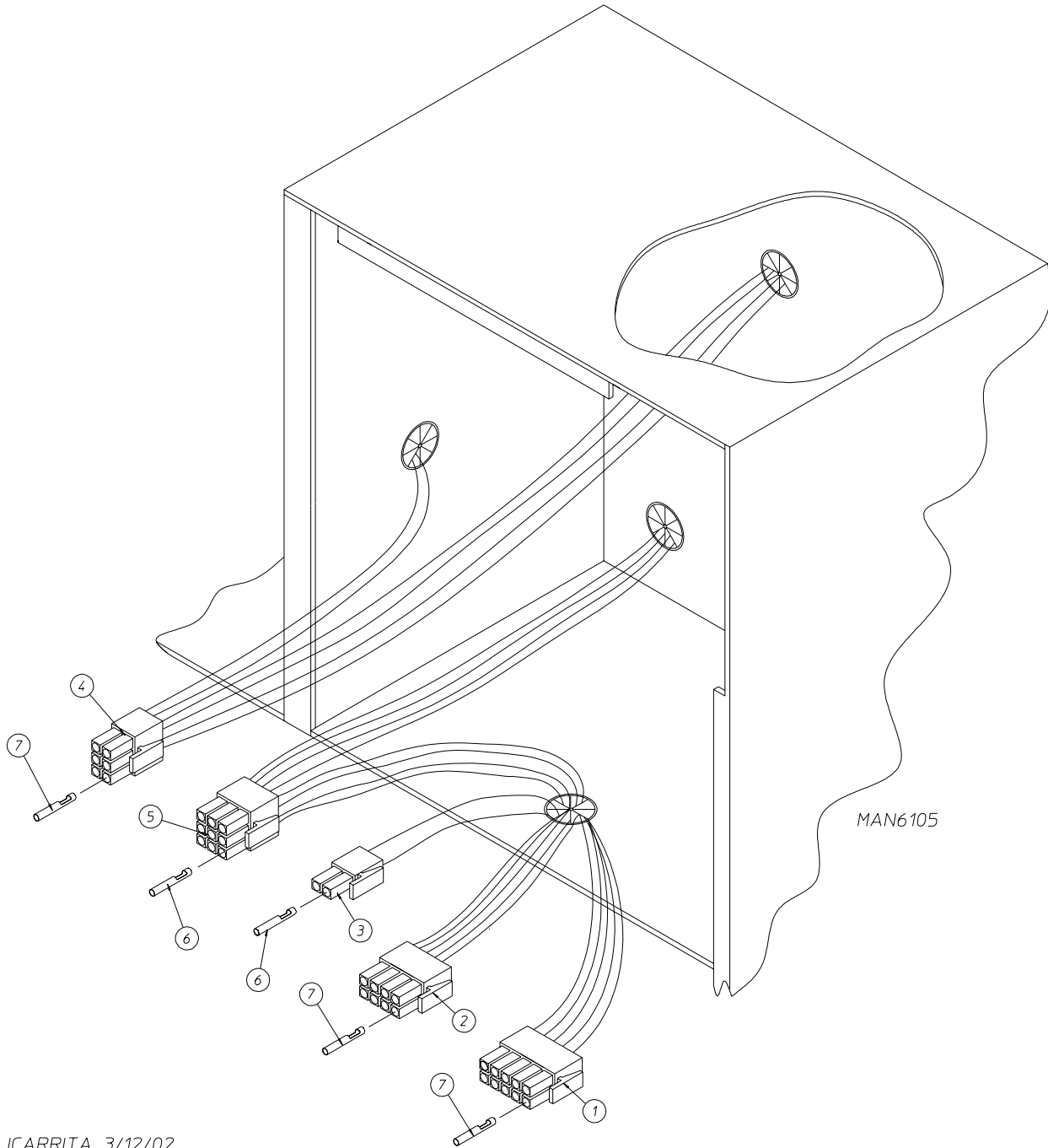
Illus. No.	Part No.	Qty.	Description
1	850978	1	Control Door (includes illus. nos. 2 and 3)
2	117603	2	1/8" x 9/16" Noise Suppressor Tape (sold by the foot)
3	117604	4	Noise Suppressor Tape (sold by the foot)
4	150314	2	#10-32 x 1/2" TORX® Screw
5	154011	2	#10-32 Multi-Thread U-Nut
6	112366	1	Logo ONLY
7	150309	4	#10-16 x 1/2" Hex Head TEK Crimptite Screw
8	102603	1	Control Door Rod Support Catch
9	102601	1	Control Door Retainer Clip
10	102502	1	Control Door Rod

Phase 7 Non-Coin Microprocessor Control Panel Assembly



Illus. No.	Part No.	Qty.	Description
1	112571	1	Phase 7 Non-Coin Keypad
2	850984	1	Phase 7 Non-Coin Microprocessor Controller (computer) Panel ONLY
	883749	1	Phase 7 Non-Coin Reversing Microprocessor Controller (computer) Control Panel Assembly Complete with Fire Suppression System (includes illus. nos. 1 through 7)
3	887004	1	Phase 7.2.2 Board with Fire Suppression System and H ₂ O (pressure) Switch (for models mfd. as of December 3, 2003)
	887001	1	Phase 7.2.1 to .2 Board with Fire Suppression System and No H ₂ O (pressure) Switch (for models mfd. prior to December 3, 2003)
	887024	1	Phase 7.2.2 Board without Fire Suppression System and H ₂ O (pressure) Switch
4	150005	2	#6-32 x 3/4" Phillips Round Head Machine Screw
5	153010	2	#6 Star Washer
6	136097	1	500-mA Fuse
7	136016	1	5-Amp Fuse

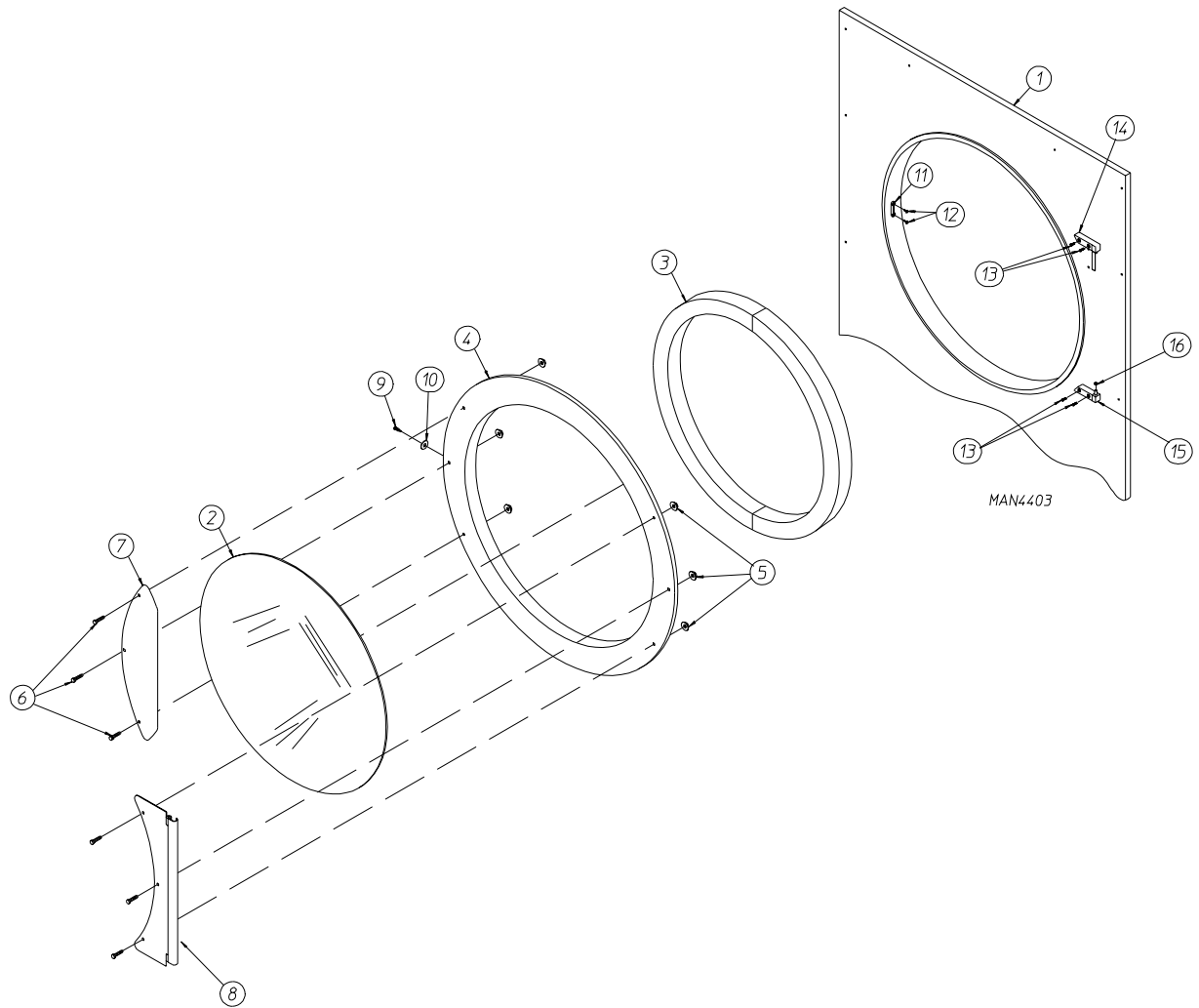
Phase 7 Non-Coin Microprocessor Control Box Assembly



JCARRITA 3/12/02

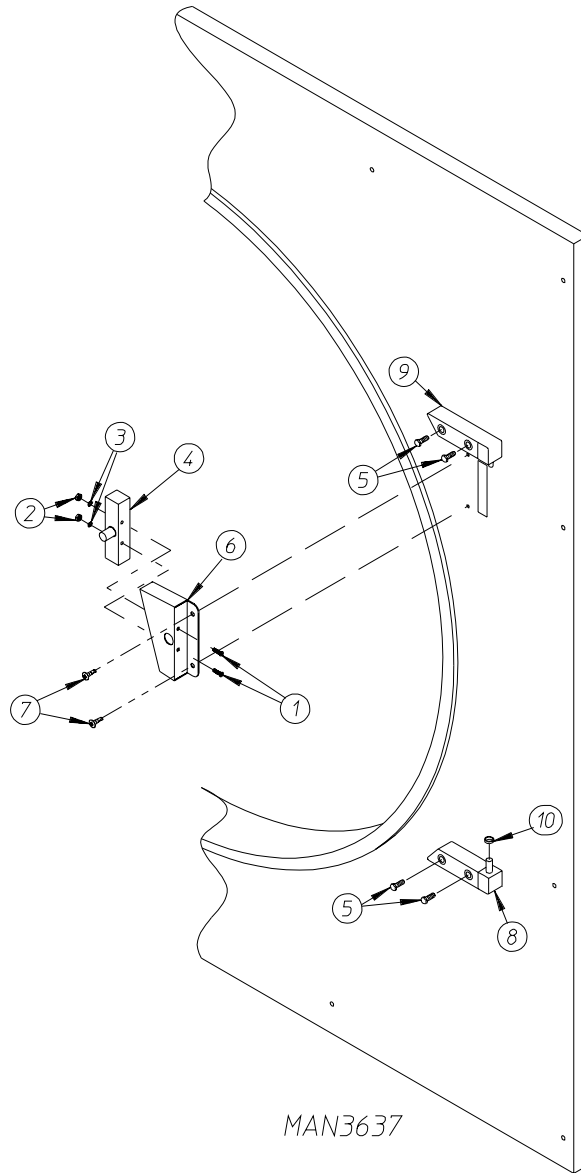
Illus. No.	Part No.	Qty.	Description
1	122681	1	10-Pin Connector
2	122676	1	8-Pin Connector
3	122646	1	2-Pin Connector
4	122683	1	6-Pin Connector
5	122640	1	9-Pin Connector
6	122706	*	#20-16 U.M.N.L. Socket
7	122669	*	Female Crimp Terminal

* As needed.



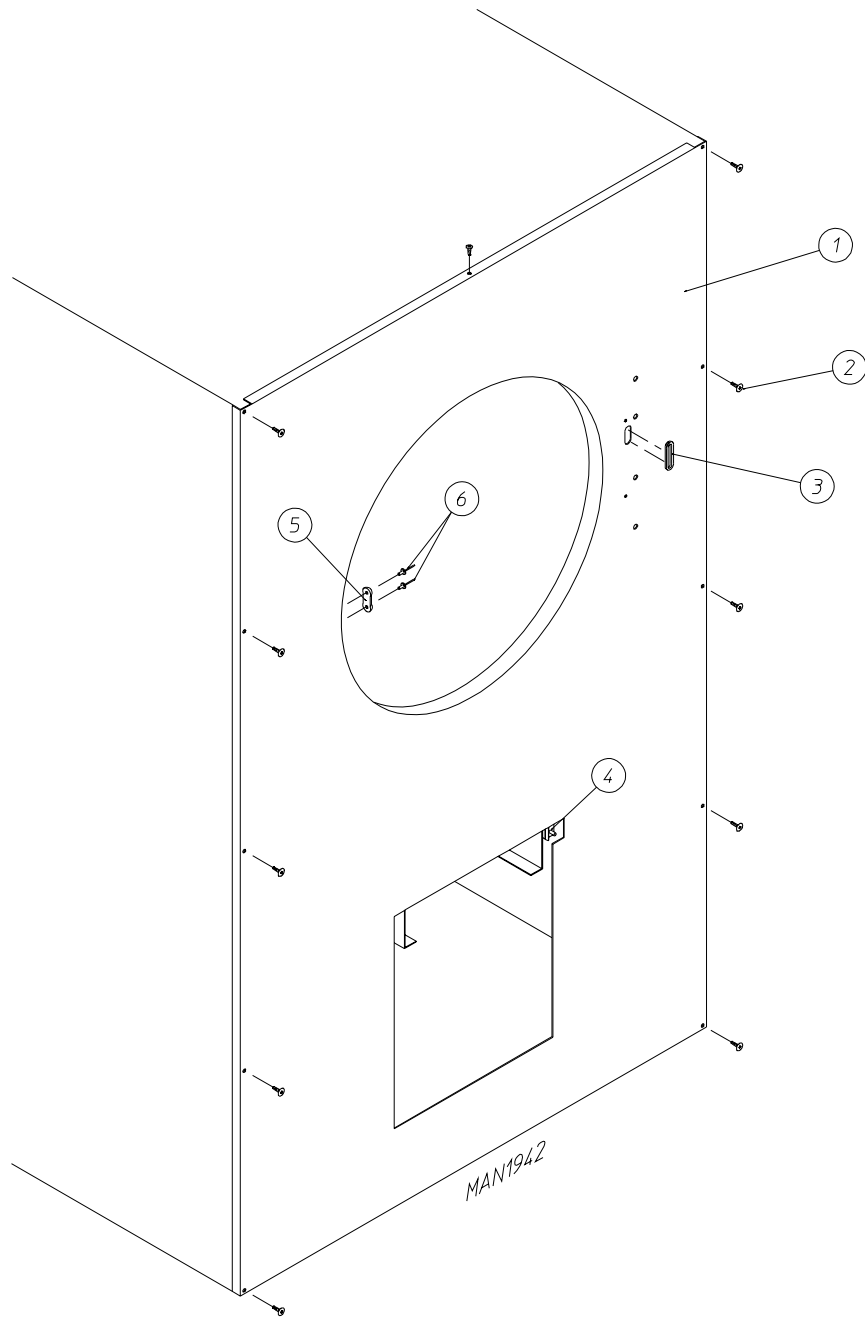
Illus. No.	Part No.	Qty.	Description
1	—	1	Front Panel (refer to Front Panel Assembly on page 11)
2	102214	1	30" Door Glass ONLY
	170730	1	Door / Glass Adhesive (10.3 oz. cartridge) ... Not Illustrated
3	882411	1	Main Door Gasket ONLY (7/8" x 7/8" x 104")
4	835003	1	Main Door Assembly Complete (includes illus. nos. 2 through 10)
	835002	1	Main Door Ring
5	881806	6	Free Spin Wash Nut
6	881740	6	1/4-20 x 5/8" Carriage Bolt
7	881688	1	Cold Rolled Steel Main Door Handle
8	881685	1	Main Door Hinge
9	150120	1	Main Door Latch Screw (#10-32 x 7/16" dome hex head screw)
10	152008	1	#10-32 Hex Nut
11	170330	1	Friction Door Catch
12	154215	2	5/32" Pop Rivet
13	150445	4	1/4-20 x 3/4" Black Cap Head Screw
14	881440	1	White Top Hinge Block (includes illus. nos. 13 and 14)
15	881441	1	White Bottom Hinge Block (includes illus. nos. 13, 15, and 16)
16	153031	1	Nylon Washer

Main Door Switch Assembly



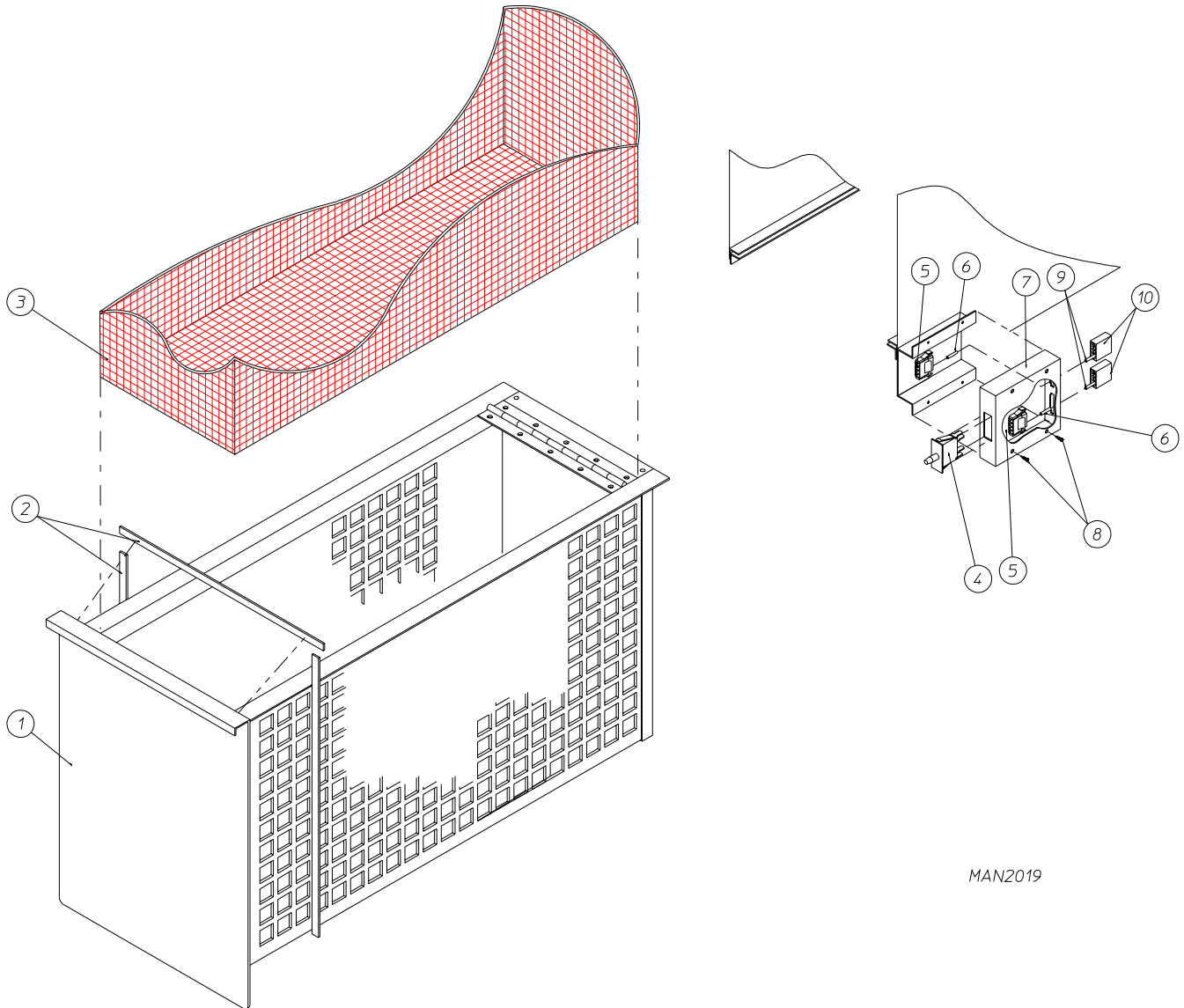
MAN3637

<u>Illus. No.</u>	<u>Part No.</u>	<u>Qty.</u>	<u>Description</u>
1	150006	2	#6-32 x 7/8" Phillips Pan Head Machine Screw
2	152013	2	#6-32 Hex Nut
3	153010	2	#6 Star Washer
4	137005	1	Single-Pole Door Switch
5	150445	4	1/4-20 x 3/4" Black Cap Head Screw
6	881687	1	Main Door Switch Housing ONLY
	881702	1	Main Door Switch with Housing Assembly (includes illus. nos. 1 through 4 and 6)
7	150301	2	#8-18 x 7/16" Phillips Pan Head TEK Screw
8	881441	1	White Bottom Hinge Block (includes illus. nos. 5, 8, and 10)
9	881440	1	White Top Hinge Block (includes illus. nos. 5 and 9)
10	153031	1	Nylon Washer



<u>Illus. No.</u>	<u>Part No.</u>	<u>Qty.</u>	<u>Description</u>
1	883703	1	Front Panel Assembly (includes illus. nos. 1, 5, and 6)
2	150309	9	#10-16 x 1/2" Hex Head TEK Crimptite Screw
3	121405	1	Rubber Grommet
4	—	1	Lint Drawer Switch (refer to Lint Drawer / Lint Drawer Switch Assemblies on page 12)
5	170330	1	Friction Door Latch
6	154215	2	5/32" Pop Rivet

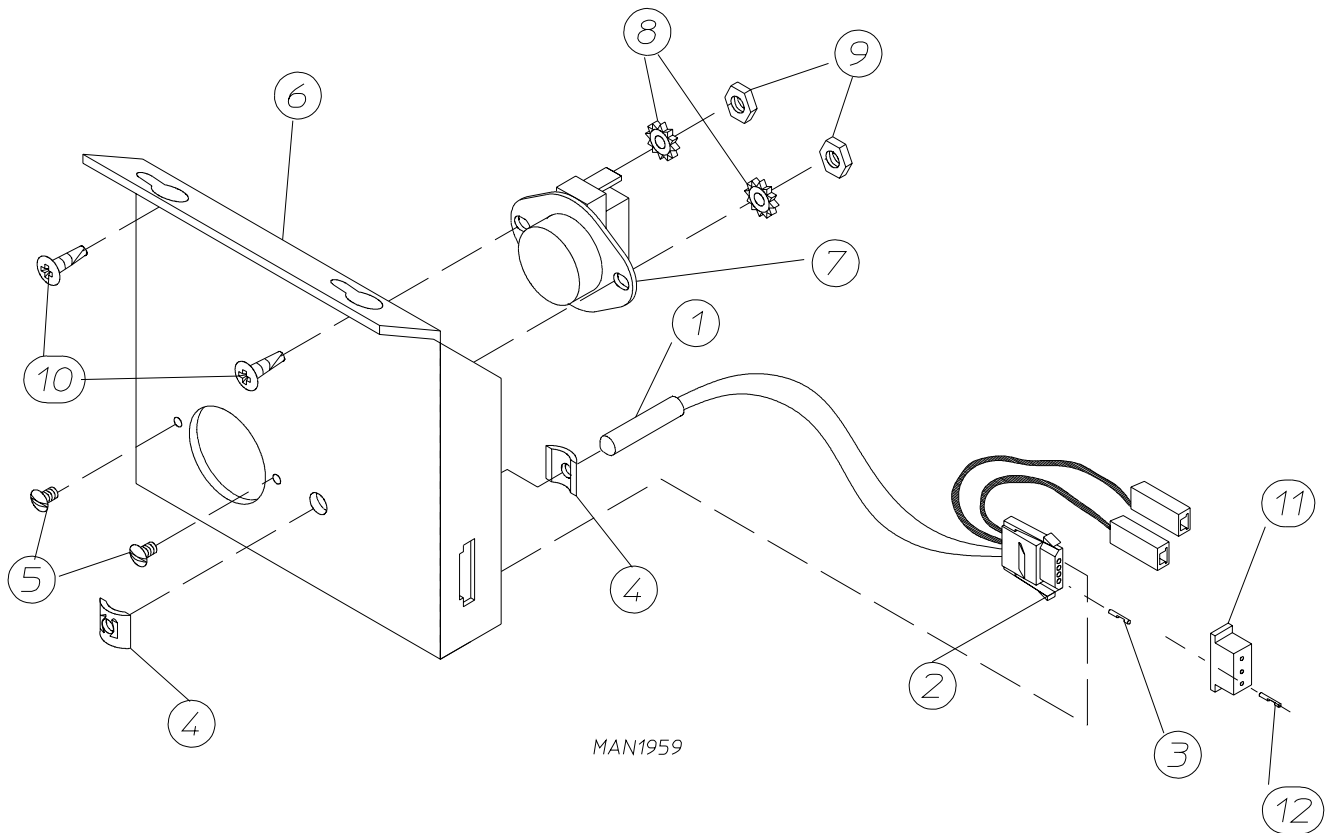
Lint Drawer / Lint Drawer Switch Assemblies



MAN2019

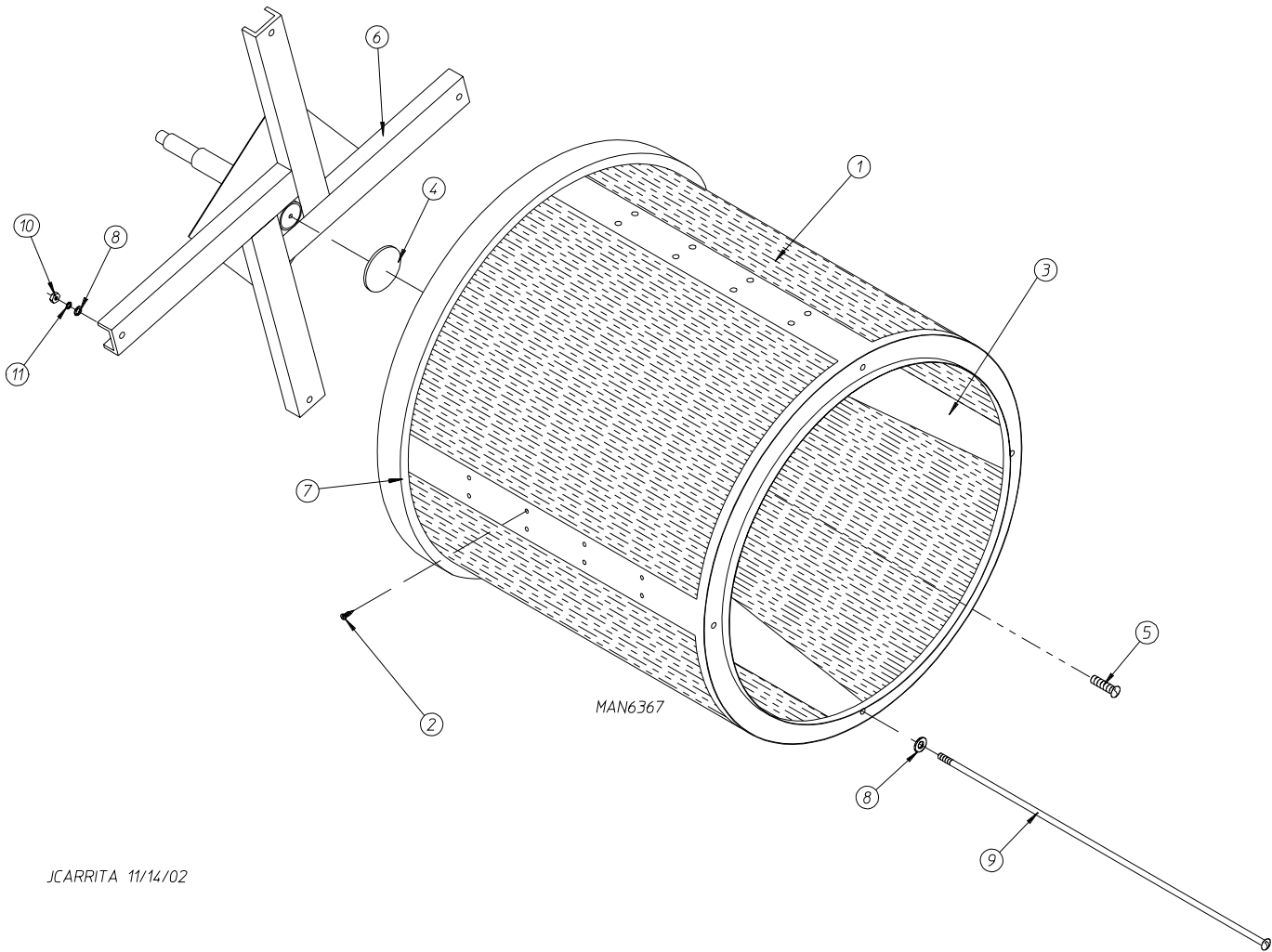
Illus. No.	Part No.	Qty.	Description
1	883503*	1	Lint Drawer Assembly (includes illus. nos. 1 and 2)
2	117605	5	Gasket (sold by the foot)
3	802205	1	Lint Screen Assembly
4	122116	1	Lint Drawer Switch
5	122605	2	4-Pin Connector (female)
6	122701	4	Socket Terminal ONLY
	122801	1	Socket / Pin Extraction Tool ... Not Illustrated
7	800478	1	Lint Drawer Switch Box Assembly (includes illus. nos. 4 through 7)
	304135	1	Lint Drawer Switch Box ONLY
8	150301	2	#8-18 x 7/16" Phillips Pan Head TEK Screw
9	122700	4	Pin Terminal ONLY
10	122604	2	4-Pin Connector (male)

* Specify color when ordering.



<u>Illus. No.</u>	<u>Part No.</u>	<u>Qty.</u>	<u>Description</u>
1	880251	1	1/4" Temperature Sensor Probe Assembly (includes illus. nos. 1 through 4)
2	122605	1	4-Pin Connector (female)
3	122701	4	Socket Terminal ONLY
4	154007	2	1/4" Tinnerman Push-On Fastener
5	150005	2	#6-32 x 1/4" Phillips Head Machine Screw
6	802174	1	Sensor Bracket Assembly Complete (includes illus. nos. 1 through 9)
	323626	1	Temperature Sensor Bracket ONLY
7	130103	1	225° Automatic Reset Thermostat
8	153010	2	#6 Star Washer
9	152000	2	#6-32 Hex Nut
10	150301	2	#8-18 x 7/16" Phillips Pan Head TEK Screw
11	122604	1	4-Pin Connector (male)
12	122700	4	Pin Terminal ONLY
	122801	1	Socket / Pin Extraction Tool ... Not Illustrated

Tumbler / Support Assemblies

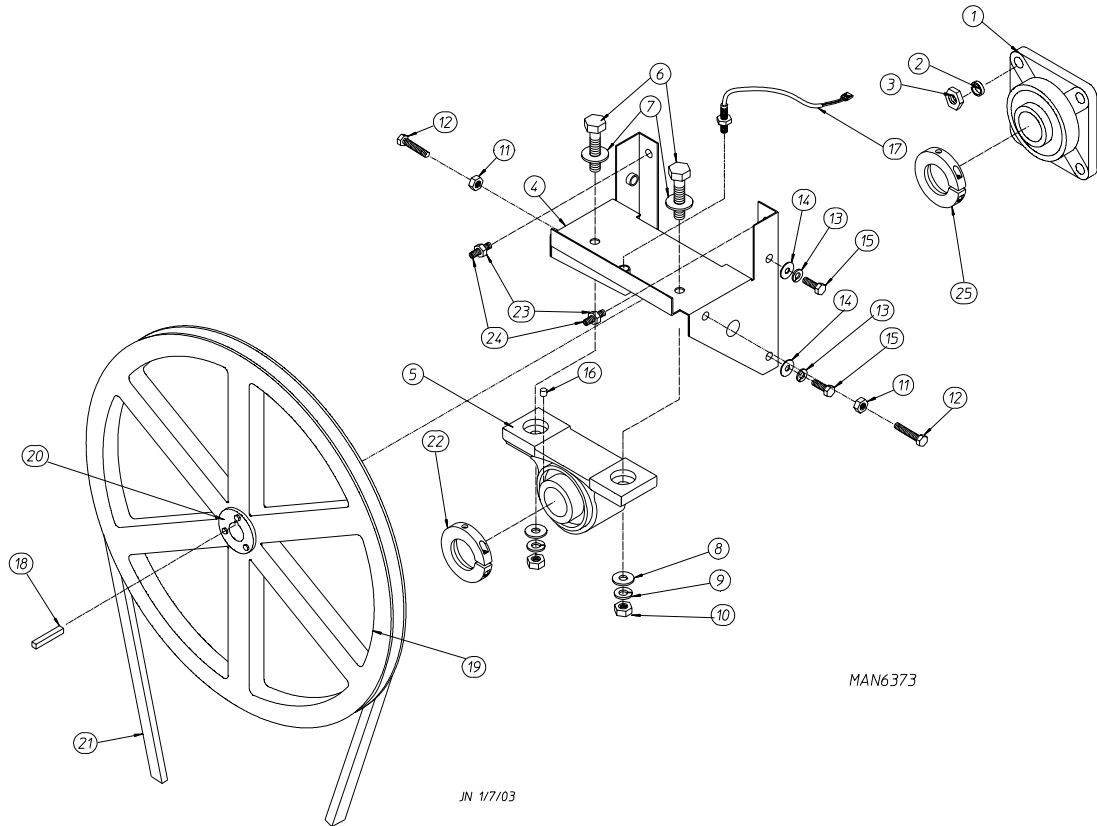


JCARRITA 11/14/02

Illus. No.	Part No.	Qty.	Description
1	881780	1	Tumbler ONLY
	881782	1	1-3/4" Reversing Tumbler / Support Assembly Complete (includes illus. nos. 1 through 11)
2	150313	40	#10-16 x 1/2" TORX® Head Crimptite Screw
	150429	1	TORX® Hand Driver (for removal of TORX® head screw) ... Not Illustrated
3	390074	4	Tumbler Rib ONLY
4	115986	1	1/4" x 2" Felt Tumbler Pad (for models mfd. as of January 22, 2002)
	153002	1	5/16" Lock Washer (for models mfd. prior to January 22, 2002)
5	150407	1	5/16-18 x 3/4" Socket Button Head Screw
6	800615	1	Tumbler Support ONLY
7	116000	1	Felt Collar ONLY
	401010	1	#847 Adhesive for Felt Collar (5 oz. tube) ... Not Illustrated
8	153004	8	3/8" Flat Washer
9	100905	4	3/8-16 x 37" Tie Rod
10	152027	4	3/8-16 Hex Nut
11	153005	4	3/8" Lock Washer

Tumbler Bearing Assembly

For Models Mfd. with Griplock Type Bearings



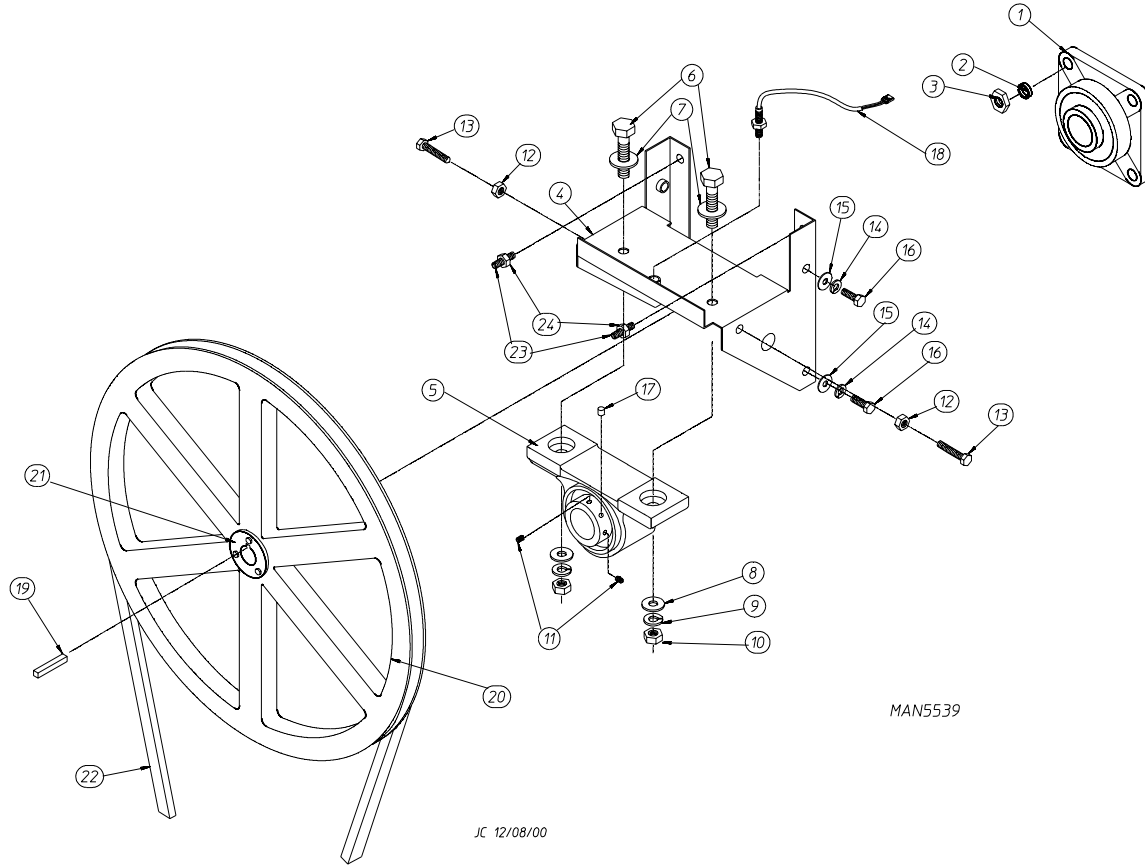
MAN6373

JN 1/7/03

Illus. No.	Part No.	Qty.	Description
1	880220	1	1-3/4" Flange Bearing (griplock)
2	153025	4	9/16" Lock Washer
3	152050	4	9/16-12 Hex Nut
4	883736	1	Pillow Block Bearing Assembly Complete with Rotational Sensor (includes illus. nos. 4 through 17)
	882543	1	Pillow Block Bearing Platform ONLY (for rotational sensor models)
5	880779	1	1-3/8" Pillow Block Bearing
6	150601	2	3/8-16 x 2" Hex Bolt
7	153004	2	3/8" Flat Washer
8	153004	2	3/8" Flat Washer
9	153005	2	3/8" Lock Washer
10	152005	2	3/8-16 Hex Nut
11	152004	2	5/16-18 Hex Nut
12	150621	2	5/16-18 x 1-1/2" Tap Bolt
13	153002	4	5/16" Lock Washer
14	153004	4	3/8" Flat Washer
15	150501	4	5/16-18 x 3/4" Tap Bolt
16	102120	1	Sintered 8 Magnet
17	883386	1	Rotational Sensor Assembly
18	100735	1	Shaft Key (for reversing models Only)
19	101118	1	18-3/4" Pulley
20	101119	1	1-3/8" Taper Lock Bushing
21	100106	1	5L-690 V-Belt (tumbler to idler)
22	100280	1	1-3/8" Bearing Replacement Collar (griplock)
23	152004	2	5/16-18 Hex Nut
24	150610	2	5/16-18 x 1-1/2" Allen Setscrew
25	100279	1	1-3/4" Bearing Replacement Collar (griplock)

Tumbler Bearing Assembly

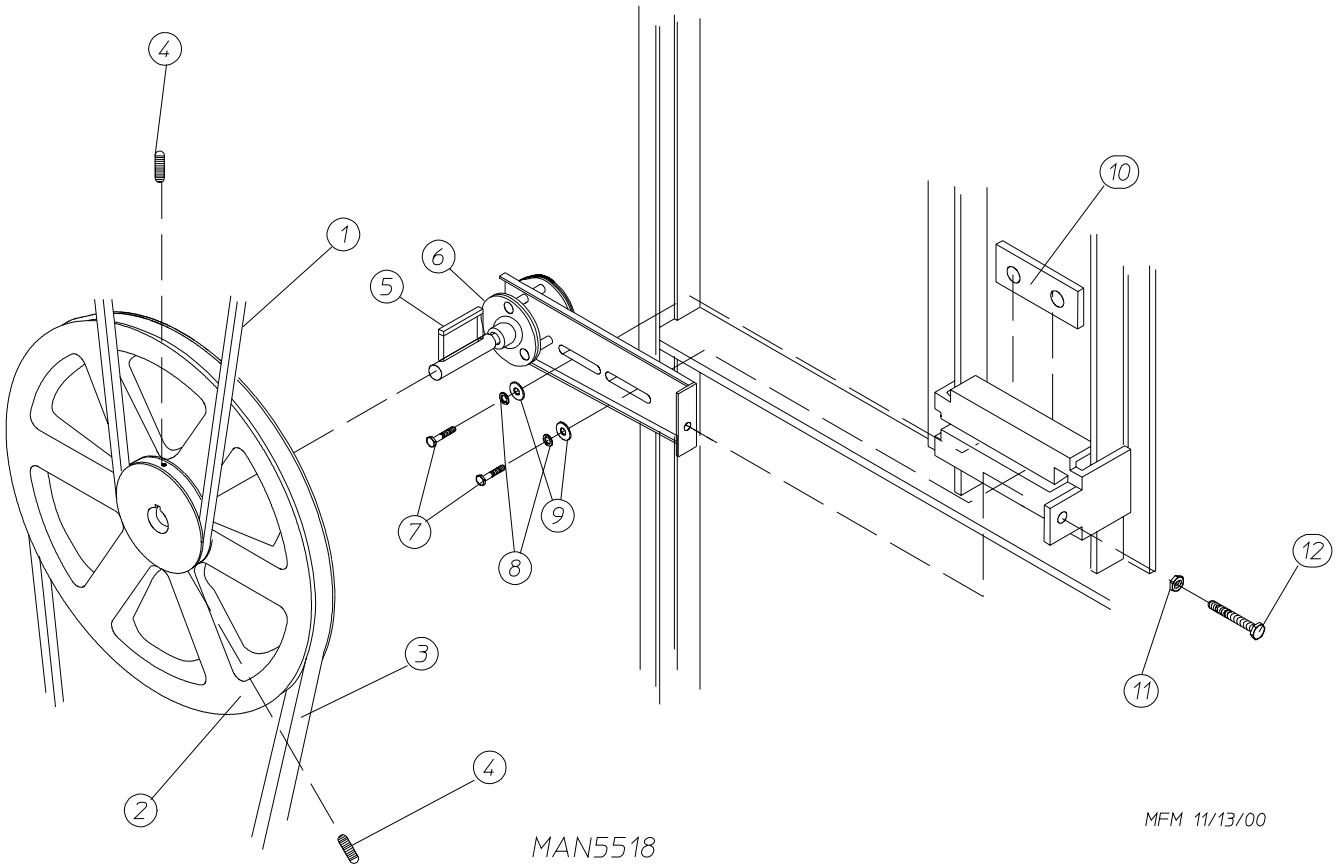
For Models Mfd. without Griplock Type Bearings



MAN5539

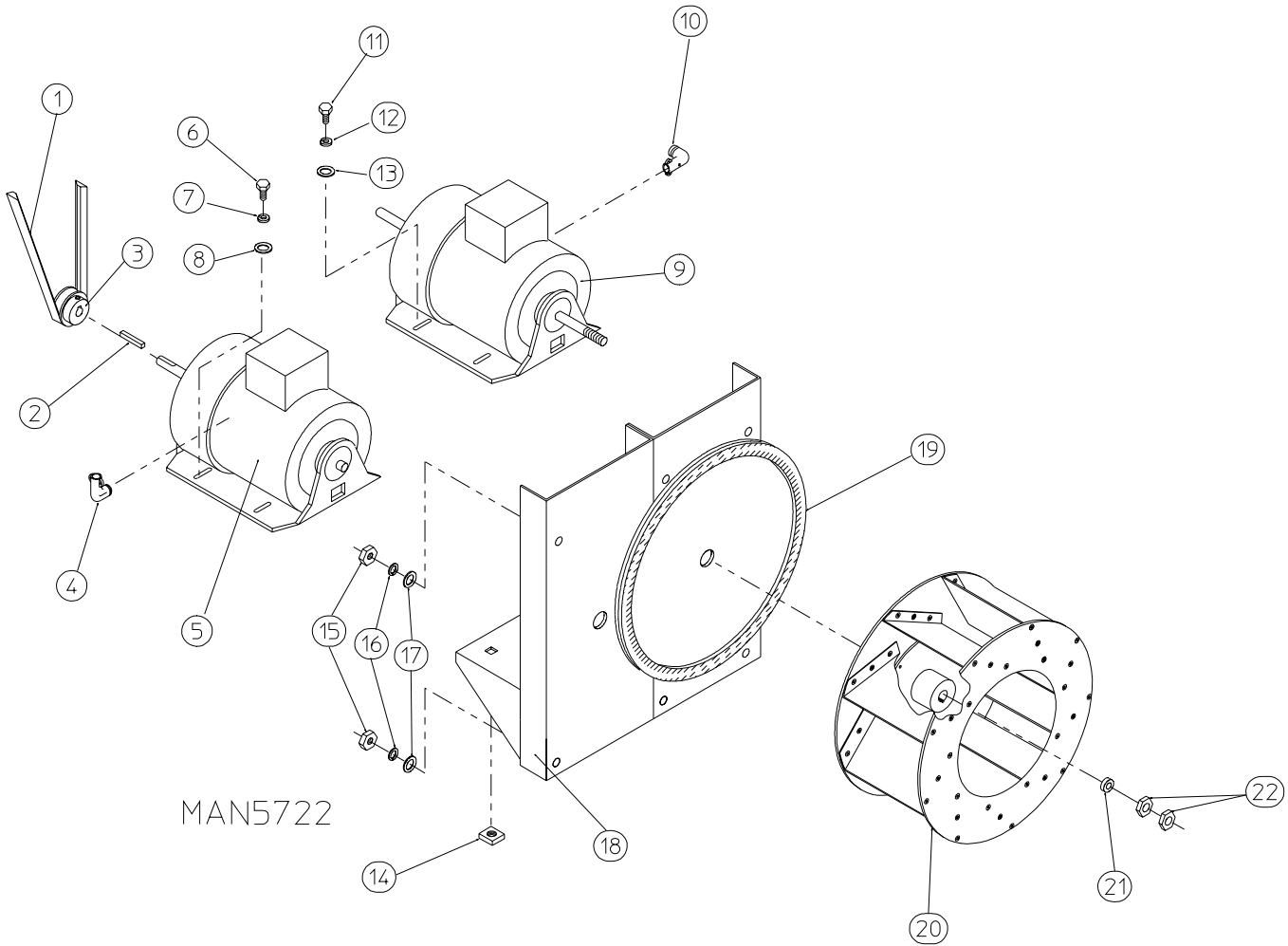
JC 12/08/00

Illus. No.	Part No.	Qty.	Description
1	880220	1	1-3/4" Flange Bearing
2	153025	4	9/16" Lock Washer
3	152050	4	9/16-12 Hex Nut
4	883387	1	Pillow Block Bearing Assembly Complete with Rotational Sensor (includes illus. nos. 4 through 18, 23, and 24)
	882543	1	Pillow Block Bearing Platform ONLY
5	880779	1	1-3/8" Pillow Block Bearing
6	150601	2	3/8-16 x 2" Hex Bolt
7	153004	2	3/8" Flat Washer
8	153004	2	3/8" Flat Washer
9	153005	2	3/8" Lock Washer
10	152005	2	3/8-16 Hex Nut
11	154326	2	5/16-24 x 3/8" Setscrew
12	152004	2	5/16-18 Hex Nut
13	150621	2	5/16-18 x 1-1/2" Tap Bolt
14	153002	4	5/16" Lock Washer
15	153004	6	3/8" Flat Washer
16	150501	4	5/16-18 x 3/4" Tap Bolt
17	102120	1	Sintered 8 Magnet
18	883386	1	Rotational Sensor Assembly
19	100735	1	Shaft Key
20	101118	1	18-3/4" Pulley
21	101119	1	1-3/8" Taper Lock Bushing
22	100106	1	5L-690 V-Belt (tumbler to idler)
23	150610	2	5/16-18 x 1-1/2" Allen Setscrew
24	152004	2	5/16-18 Hex Nut



Illus. No.	Part No.	Qty.	Description
1	100106	1	5L-690 V-Belt
2	101140	1	14" x 3" Compound Pulley
3	100109	1	4L-650 V-Belt (idler to motor)
4	154301	2	5/16-18 x 1" Allen Setscrew
5	100705	1	3/16" x 3/16" x 1-3/8" Key
6	882576	1	Idler Bearing Assembly Complete (includes illus. nos. 5 through 12)
7	150617	2	3/8-16 x 1" Hex Head Machine Bolt
8	153005	2	3/8" Lock Washer
9	153004	2	3/8" Flat Washer
10	801009	1	Idler Square Washer
11	152004	1	5/16-18 Hex Nut
12	150509	1	5/16-18 x 3" Hex Head Machine Bolt

Reversing T.E.F.C. Motor Mount Assembly

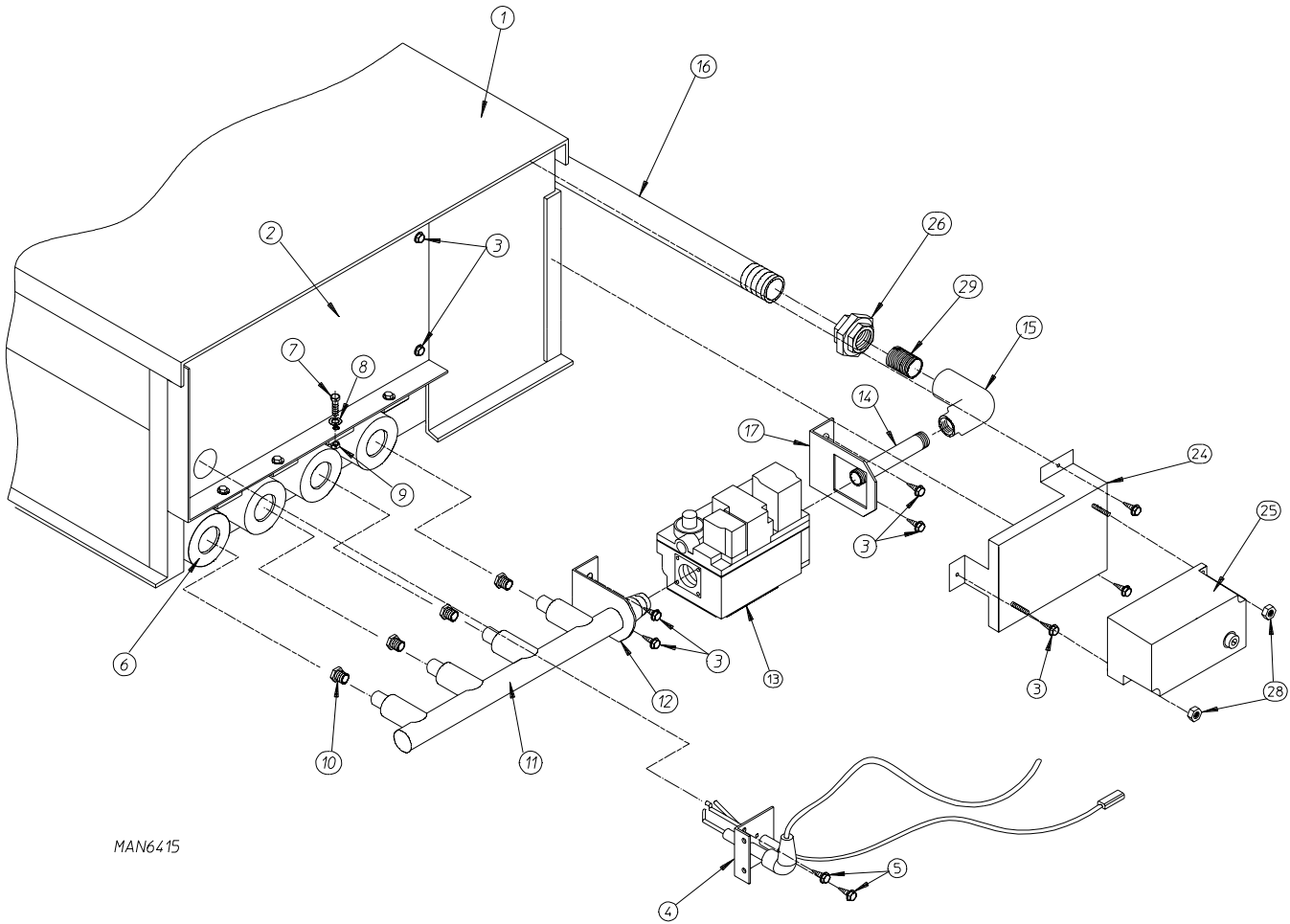


Reversing T.E.F.C. Motor Mount Assembly

<u>Illus. No.</u>	<u>Part No.</u>	<u>Qty.</u>	<u>Description</u>
1	100109	1	4L-650 V-Belt (motor to idler)
2	100701	1	3/16" x 3/16" x 1" Key
3	101130	1	5/8" x 2-1/2" Motor Pulley (60 Hz Only)
	101139	1	5/8" x 2-3/4" Motor Pulley (50 Hz Only)
4	120200	1	3/8" x 90° Connector
5	181003*	1	1/2 hp 208/230/380/460v 3ø 50/60 Hz Totally Enclosed, Fan-Cooled Motor (56Z frame)
6	150501	4	5/16-18 x 3/4" Hex Head Machine Bolt
7	153002	4	5/16" Lock Washer
8	153001	4	5/16" Flat Washer
9	181043*	1	3 hp 220/230/380/460v 3ø 50/60 Hz Totally Enclosed, Fan-Cooled Motor with 3/4" Shaft (56Z frame)
10	120200	1	3/8" x 90° Connector
11	150501	4	5/16-18 x 3/4" Hex Head Machine Bolt
12	153002	4	5/16" Lock Washer
13	153001	4	5/16" Flat Washer
14	154000	8	5/16" Tinnerman Nut
15	152004	6	5/16-18 Hex Nut
16	153002	6	5/16" Lock Washer
17	153001	6	5/16" Flat Washer
18	803566	1	Reversing Motor Mount ONLY (56Z frame)
	883027*	1	60 Hz Reversing Totally Enclosed, Fan-Cooled Motor Mount Assembly Complete (includes illus. nos. 2 through 14 and 18 through 22)
	883026*	1	50 Hz Reversing Totally Enclosed, Fan-Cooled Motor Mount Assembly Complete (includes illus. nos. 2 through 14 and 18 through 22)
19	117604	4	Noise Suppressor Tape (sold by the foot)
20	802027	1	16" Riveted High Flow Impellor (60 Hz models)
	802024	1	16" Riveted High Flow Impellor (50 Hz models)
21	153065	1	1-1/2" Outside Diameter x 1/2" Washer
22	152006	2	1/2-20 Left Hand Jam Nut

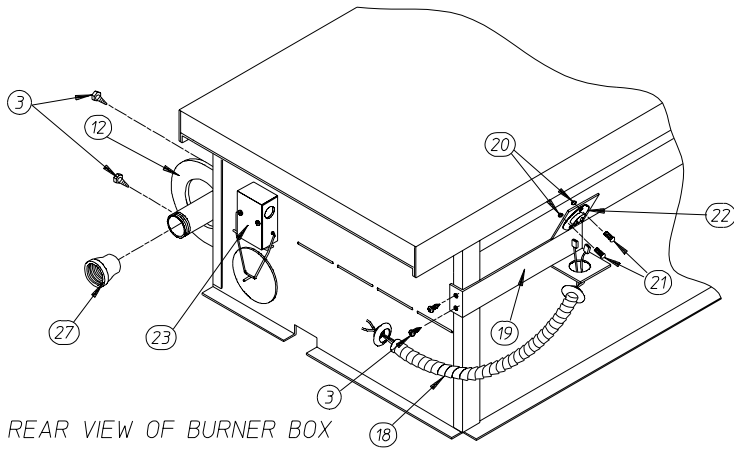
* Check part number on motor data label to verify correct motor.

Direct Spark Ignition Burner Assembly



MAN6415

FRONT VIEW OF BURNER BOX



REAR VIEW OF BURNER BOX

JNERY 12/16/02

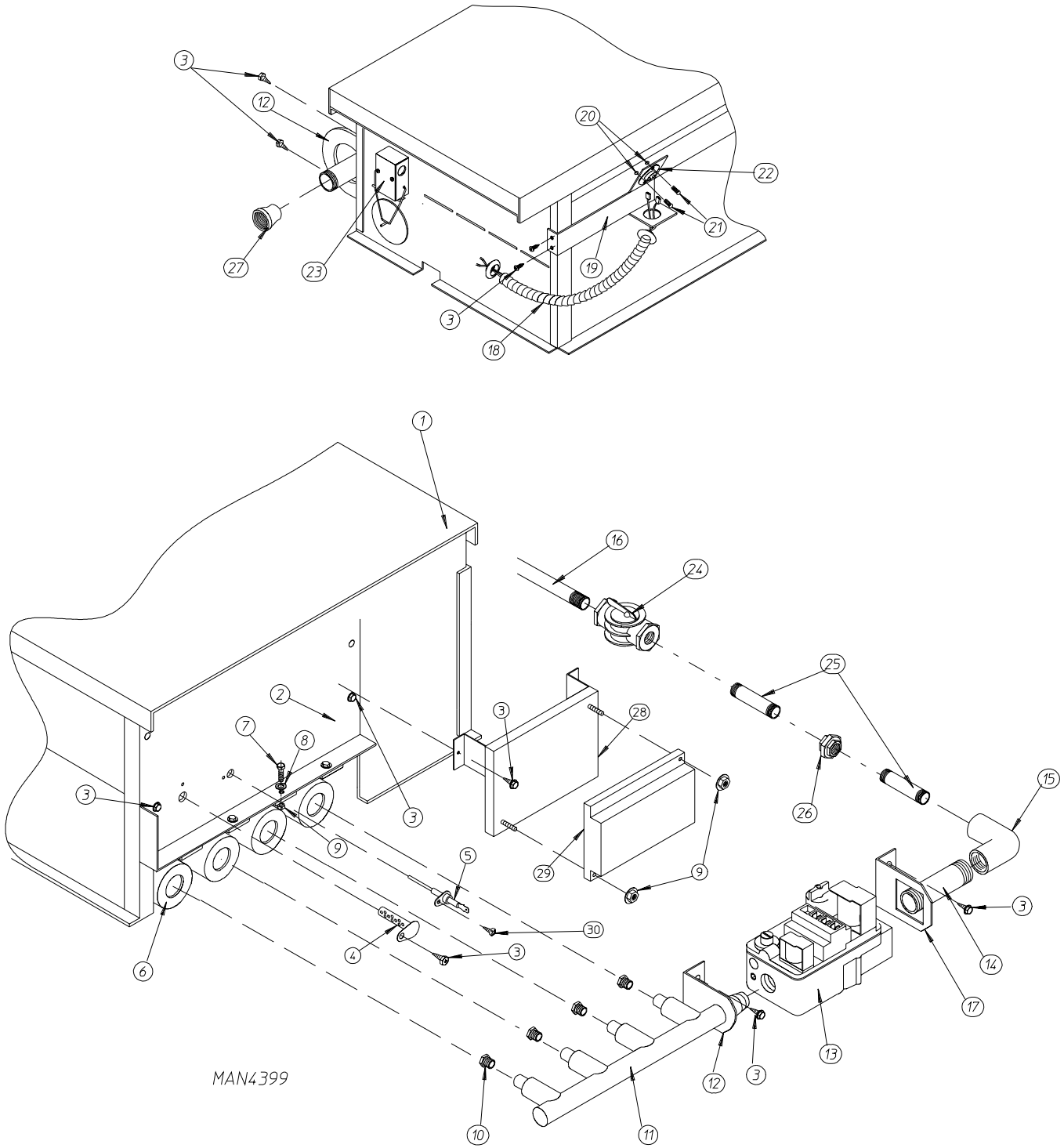
Direct Spark Ignition Burner Assembly

<u>Illus. No.</u>	<u>Part No.</u>	<u>Qty.</u>	<u>Description</u>
1	802237	1	Burner Box ONLY
	803020*	1	Natural Gas Burner Assembly II Complete Less Orifice (includes illus. nos. 1 through 9 and 11 through 29)
	803021*	1	Liquid Propane Burner Assembly II Complete Less Orifice (includes illus. nos. 1 through 9 and 11 through 29)
2	802240	1	Burner Shield
3	150309	15	#10-16 x 1/2" Hex Head Crimptite Screw
4	128915	1	Direct Spark Ignition Ignitor / Flame-Probe ONLY
	880330	1	High Voltage Wire and Connector ONLY
	880134	1	Direct Spark Ignition Ignitor / Flame-Probe Assembly Complete with High Voltage Wire Connector
	305410	—	Ignitor Gap Tool ... Not Illustrated
5	150300	2	#10-16 x 1/2" Hex Washer TEK Screw
6	141105	4	Large Burner Tube
7	150108	4	#8-32 x 1/2" Phillips Pan Head Machine Screw
8	153000	4	#8 Steel Burr
9	151001	4	#8-32 Pal Nut
10**	140856	4	#23 Burner Orifice (natural gas) ONLY
	140811	4	#41 Burner Orifice (liquid propane gas) ONLY
11	141210	1	3/4" Manifold (4-port)
12	323737	1	Pipe Bracket (bent)
13	128928	1	24 VAC Direct Spark Ignition Gas Valve (natural gas) ONLY
	881052	1	24 VAC Direct Spark Ignition Gas Valve (liquid propane gas) ONLY
14	142715	1	1/2" x 2" Nipple
15	142511	1	3/4" x 1/2" Reducing Elbow
16	142829	1	3/4" x 28" Pipe Nipple
17	323763	1	Gas Valve Bracket
18	824533	1	Sail Switch to Hi-Limit Harness
19	319704	1	Hi-Limit Mounting Bracket
20	151000	2	#6-32 Pal Nut
21	150001	2	#6-32 x 1/2" Round Head Machine Screw
22	130201	1	330° Manual Reset Hi-Limit Thermostat
23	—	1	Sail Switch (refer to Sail Switch Assembly on page 24)
24	810030	1	Direct Spark Ignition Mounting Bracket
25	128935	1	Direct Spark Ignition Module Johnson Controls
26	142601	1	3/4" Union
27	142924	1	1" to 3/4" Reducing Coupling
—	882119	1	ML-82 Burner Liquid Propane Conversion Kit with Orifice
28	152013	2	#6-32 Hex Nut
29	142701	2	3/4" Close Nipple

* Burner orifices are not included and must be ordered separately.

** Consult factory for elevations over 2,000 feet.

Hot Surface Ignition Burner Assembly



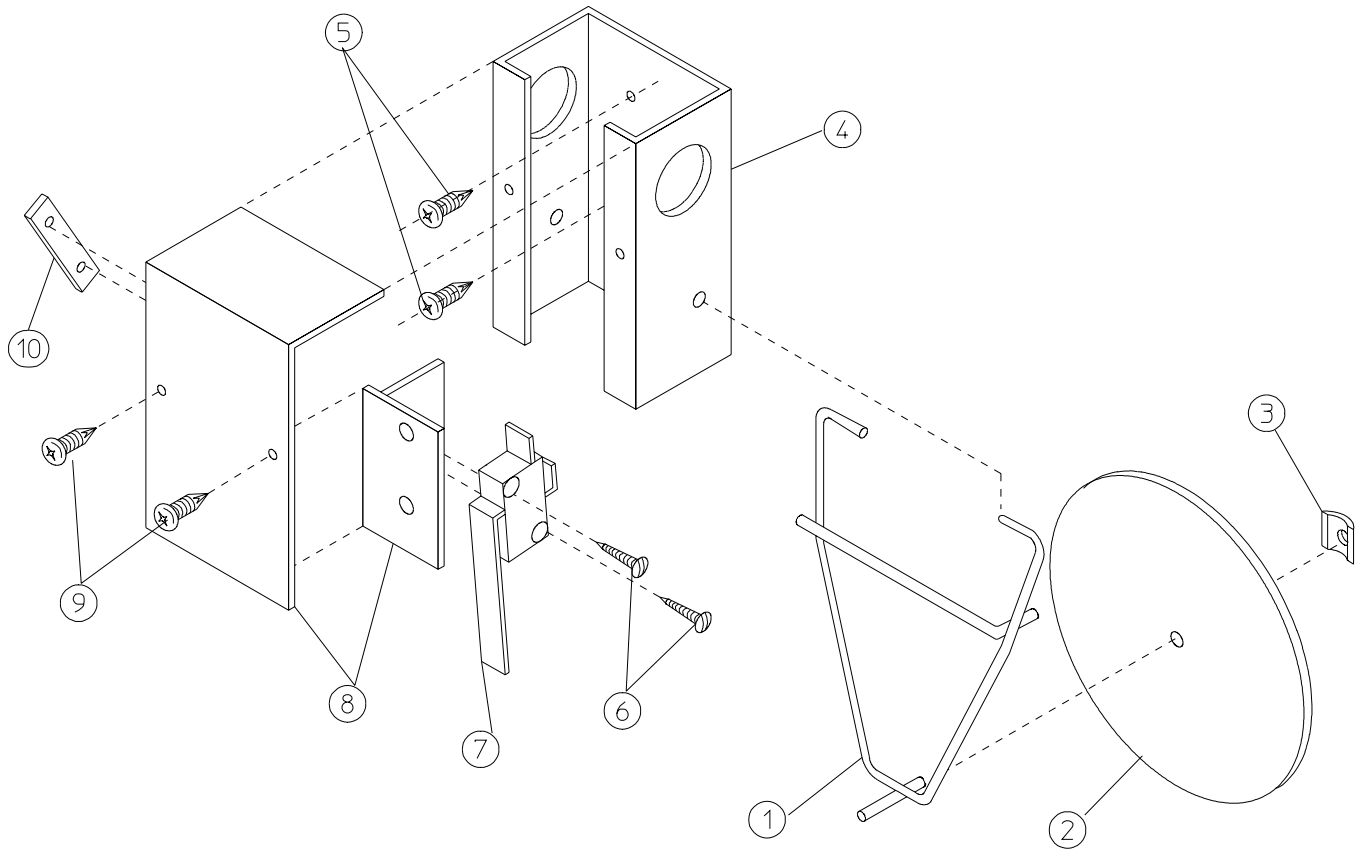
Hot Surface Ignition Burner Assembly

<u>Illus. No.</u>	<u>Part No.</u>	<u>Qty.</u>	<u>Description</u>
1	802237	1	Burner Box ONLY
	881050*	1	Natural Gas Burner Assembly Complete Less Orifices (includes illus. nos. 1 through 3, 6 through 9, and 11 through 27)
	881051*	1	Liquid Propane Burner Assembly II Complete Less Orifice (includes illus. nos. 1 through 9 and 11 through 30)
2	318400	1	Burner Shield
3	150309	17	#10-16 x 1/2" Hex Head TEK Crimptite Screw
4	881597	1	Hot Surface Ignitor – 24 VAC
5	128921	1	Hot Surface Ignition Flame-Probe
6	141105	4	Large Burner Tube
7	150103	4	#8-32 x 1/2" Phillips Pan Head Machine Screw
8	153000	4	#8 Washer
9	151001	6	#8-32 Pal Nut
10	140856**	4	#23 Burner Orifice (natural gas) ONLY
	140811**	4	#41 Burner Orifice (liquid propane gas) ONLY
11	141210	1	3/4" Manifold (4-port)
12	323737	2	Pipe Bracket (bent)
13	128928	1	1/2" 24 VAC Redundant (natural gas) Gas Valve
	881052	1	1/2" 24 VAC Redundant (liquid propane gas) Gas Valve
	882119**	1	Hot Surface Ignition Liquid Propane Conversion Kit
14	142715	2	1/2" x 2" Nipple
15	142511	1	3/4" x 1/2" Reducing Elbow
16	142829	1	3/4" x 20" Pipe
17	323763	1	Gas Valve Bracket
18	824533	1	Sail Switch to Hi-Limit Harness
19	319704	1	Hi-Limit Mounting Bracket
20	151000	2	#6-32 Pal Nut
21	150001	2	#6-32 x 1/2" Round Head Machine Screw
22	130201	1	330° Manual Reset Hi-Limit Thermostat ONLY
23	_____	1	Sail Switch (refer to Sail Switch Assembly on page 24)
24	141300	1	3/4" Union Shutoff
25	142709	2	3/4" x 2" Nipple
26	142601	1	3/4" Union
27	142924	1	1" to 3/4" Reducing Coupling
28	810029	1	Hot Surface Ignition Mounting Bracket Assembly
29	881797	1	Hot Surface Ignition Module II
30	150301	1	#8-18 x 7/16" Phillips Pan Head TEK Screw

* Burner orifices are not included and must be ordered separately.

** Consult factory for elevations over 2,000 feet.

Sail Switch Assembly

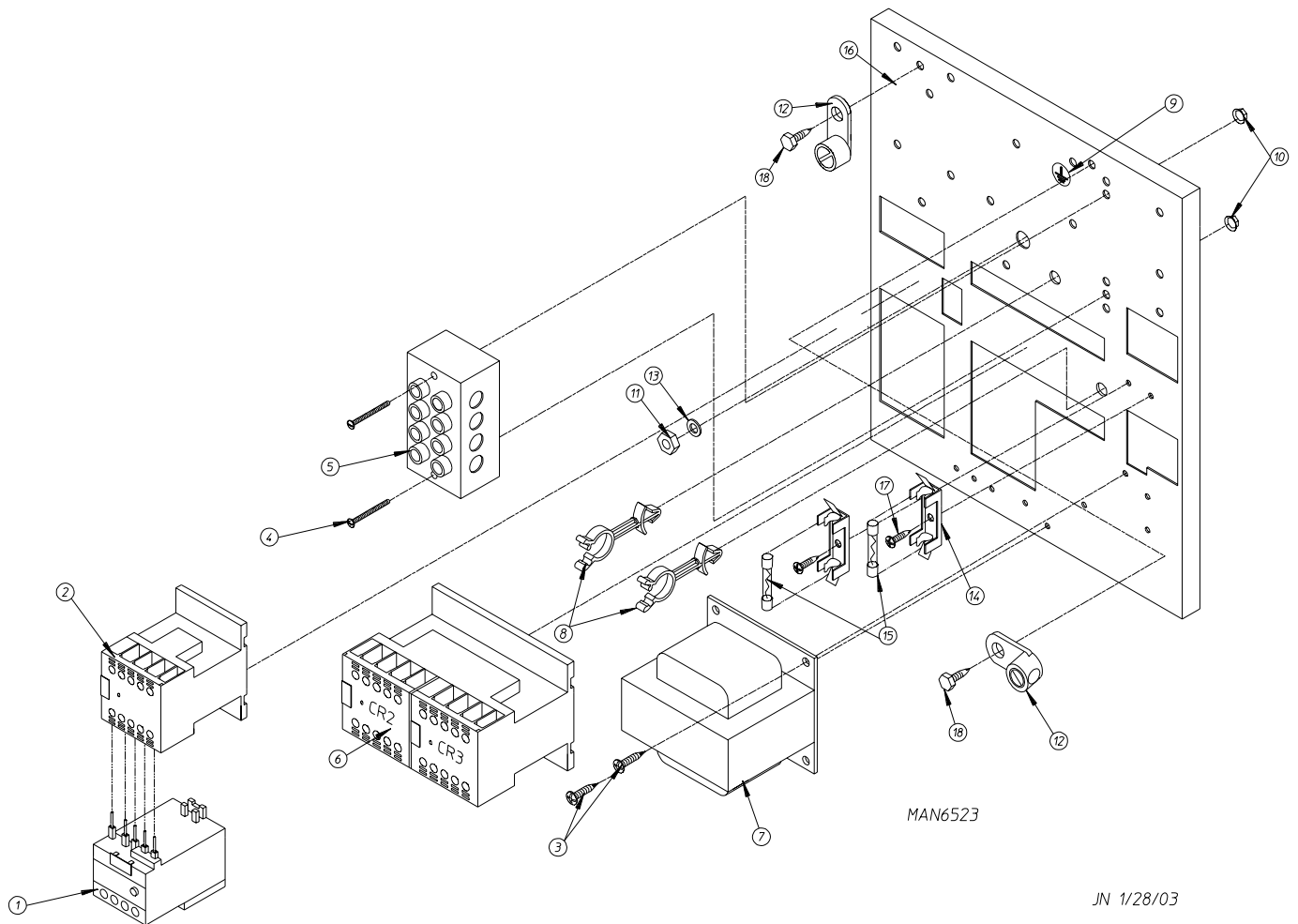


MAN0440

<u>Illus. No.</u>	<u>Part No.</u>	<u>Qty.</u>	<u>Description</u>
1	105500	1	Sail Switch Actuator Rod
2	319202	1	Sail Switch Damper (flat)
3	154002	1	1/8" Push-On Fastener
4	802800	1	Sail Switch Box with Cover and Bracket ONLY (includes illus. nos. 4, 8, and 9)
	802801	1	Sail Switch Box Assembly Complete (includes illus. nos. 1 through 4 and 6 through 10)
5	150309	2	#10-16 x 1/2" Hex Head TEK Crimptite Screw
6	150303	2	#4 x 3/4" Pan Head "A" Machine Screw
7	122200	1	Sail Switch ONLY
8	802799	1	Sail Switch Box Cover and Bracket ONLY
9	150309	2	#10-16 x 1/2" Hex Head TEK Crimptite Screw
10	154004	1	Twin Speed Nut

208-240V Reversing Relay Panel Assembly

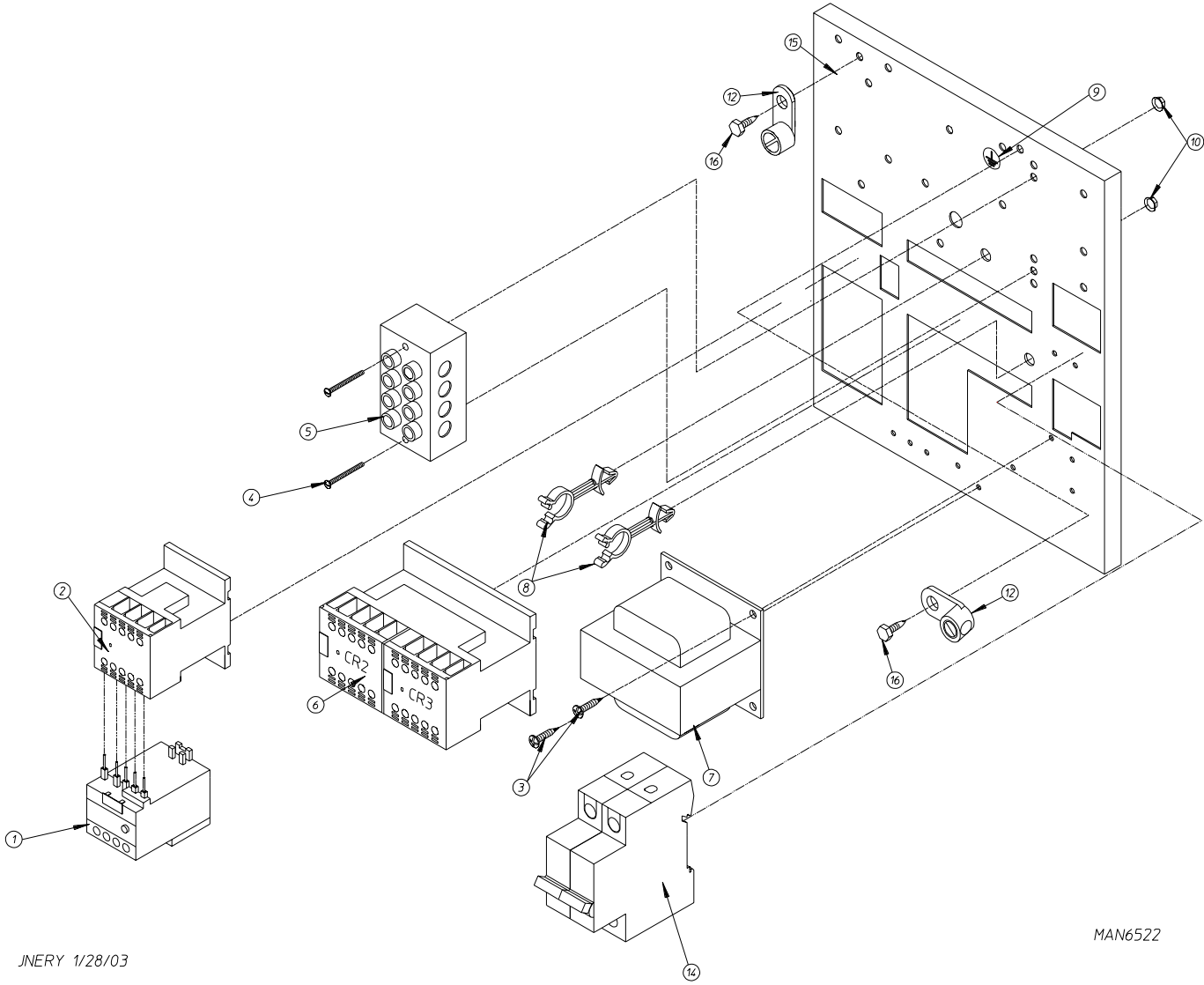
For Models Mfd. as of January 23, 2003



<u>Illus. No.</u>	<u>Part No.</u>	<u>Qty.</u>	<u>Description</u>
1	132516	1	8-11.5-Amp Overload Relay
2	132514	1	3-Phase (3 ϕ) Contactor with Arc Suppressor
3	150300	2	#10-16 x 1/2" Hex Washer TEK Screw
4	150009	2	#6-32 x 1-1/2" Phillips Round Head Machine Screw
5	120701	1	4-Position Terminal Block
6	132497	1	Reversing Contactor
7	822764	1	208-240 Volt Transformer Assembly
8	121502	2	1/2" Wire Standoff
9	112075	1	Ground Label
10	151000	2	#6-32 Pal Nut
11	152004	1	5/16-18 Hex Nut
12	121010	2	L-70 Ground Lug
13	153002	1	5/16" Lock Washer
14	136008	2	Fuse Holder
15	136057	2	1/2-Amp (Slo-Blo) Fuse
16	323743	1	Relay Panel
	823023	1	Reversing Relay Panel Complete (includes illus. nos. 1 through 18)
17	150301	1	#8-18 x 7/16" Phillips Pan Head TEK Screw
18	120910	2	#10-32 Green Ground Screw

460-480V Reversing Relay Panel Assembly

For Models Mfd. as of January 23, 2003



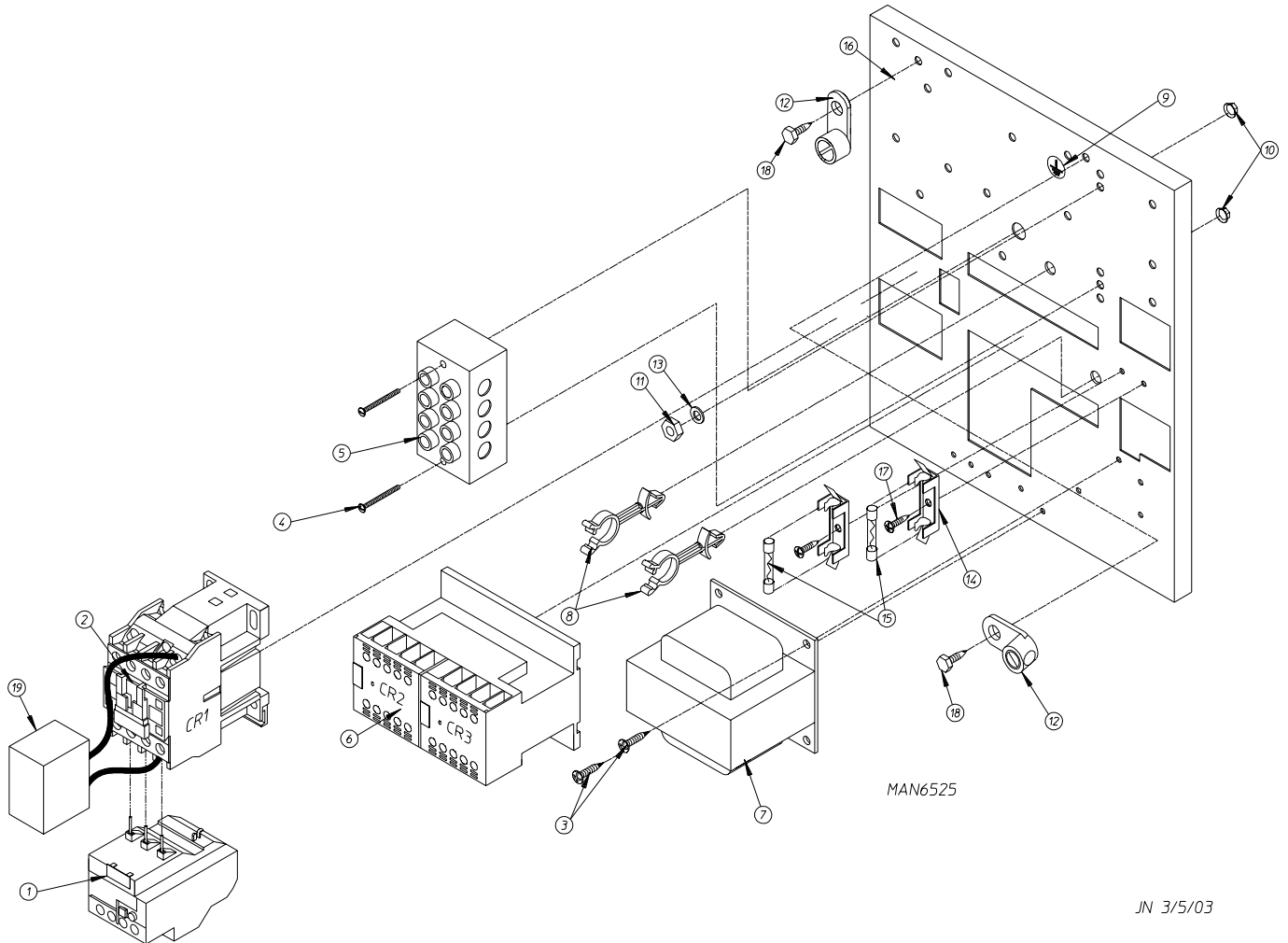
JNERY 1/28/03

MAN6522

Illus. No.	Part No.	Qty.	Description
1	132474	1	3.7-5.5-Amp Overload Relay
2	132514	1	3-Phase (3Ø) Contactor with Arc Suppressor
3	150300	2	#10-16 x 1/2" Hex Washer TEK Screw
4	150009	2	#6-32 x 1-1/2" Phillips Round Head Machine Screw
5	120701	1	4-Position Terminal Block
6	132497	1	Reversing Contactor
7	830226	1	460-480 Volt Transformer Assembly
8	121502	2	1/2" Wire Standoff
9	112075	1	Ground Label
10	151000	2	#6-32 Pal Nut
11	152004	1	5/16-18 Hex Nut
12	121010	2	L-70 Ground Lug
13	153002	1	5/16" Lock Washer
14	135501	1	2-Pole 1-Amp Circuit Breaker
15	323743	1	Relay Panel
	823021	1	Reversing Relay Panel Complete (includes illus. nos. 1 through 16)
16	120910	2	#10-32 Green Ground Screw

208-240V Reversing Relay Panel Assembly

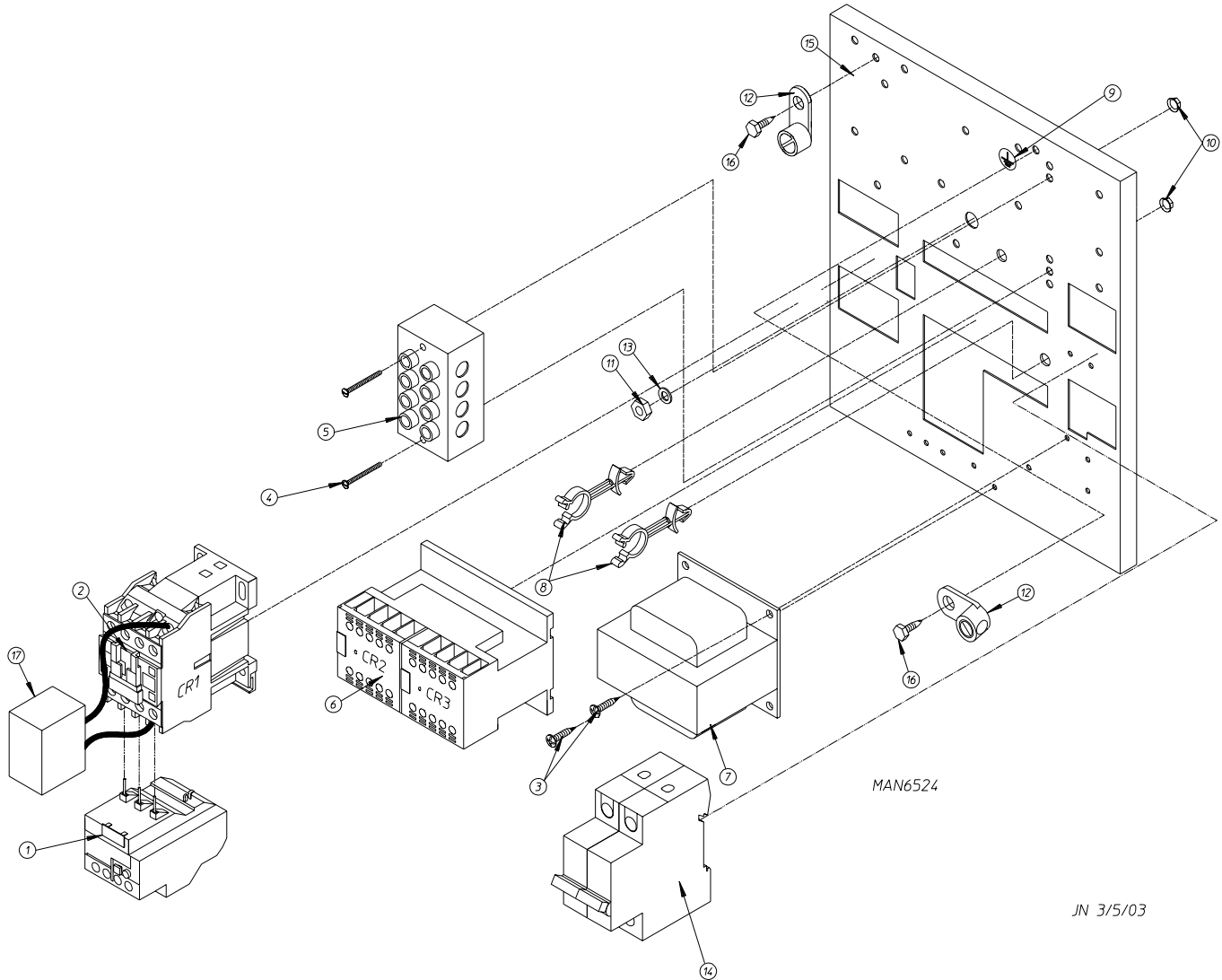
For Models Mfd. prior to January 23, 2003



<u>Illus. No.</u>	<u>Part No.</u>	<u>Qty.</u>	<u>Description</u>
1	132467	1	9-13-Amp Overload Relay
2	132445	1	3-Phase (3 ϕ) Horsepower Contactor
3	150300	2	#10-16 x 1/2" Hex Washer TEK Screw
4	150009	2	#6-32 x 1-1/2" Phillips Round Head Machine Screw
5	120701	1	4-Position Terminal Block
6	132497	1	Reversing Contactor
7	822799	1	208-240 Volt Transformer Assembly
8	121502	2	1/2" Wire Standoff
9	112075	1	Ground Label
10	151000	2	#6-32 Pal Nut
11	152004	1	5/16-18 Hex Nut
12	121010	2	L-70 Ground Lug
13	153002	1	5/16" Lock Washer
14	136008	2	Fuse Holder
15	136057	2	1/2-Amp (Slo-Blo) Fuse
16	323743	1	Relay Panel
	822765	1	Reversing Relay Panel Complete (includes illus. nos. 1 through 19)
17	150301	2	#8-18 x 7/16" Phillips Pan Head TEK Screw
18	150297	2	#10 x 1/2" Hex Washer TEK Screw
19	137015	1	R.C. Network

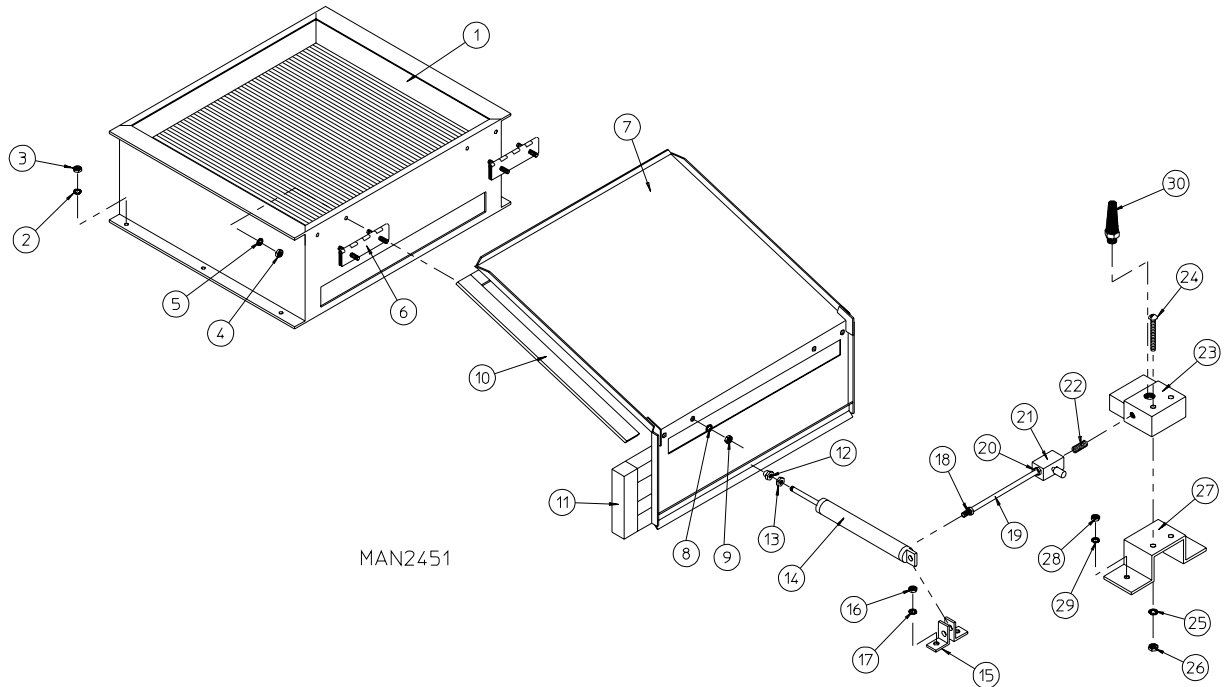
460-480V Reversing Relay Panel Assembly

For Models Mfd. prior to January 23, 2003



Illus. No.	Part No.	Qty.	Description
1	132468	1	4-6-Amp Overload Relay
2	132445	1	3-Phase (3 ϕ) Horsepower Contactor
3	150300	2	#10-16 x 1/2" Hex Washer TEK Screw
4	150009	2	#6-32 x 1-1/2" Phillips Round Head Machine Screw
5	120701	1	4-Position Terminal Block
6	132497	1	Reversing Contactor
7	824221	1	460-480 Volt Transformer Assembly
8	121502	2	1/2" Wire Standoff
9	112075	1	Ground Label
10	151000	2	#6-32 Pal Nut
11	152004	1	5/16-18 Hex Nut
12	121010	2	L-70 Ground Lug
13	153002	1	5/16" Lock Washer
14	135501	1	2-Pole 1-Amp Circuit Breaker
15	323743	1	Relay Panel
	830164	1	Reversing Relay Panel Complete (includes illus. nos. 1 through 17)
16	150297	2	#10 x 1/2" Hex Washer TEK Screw
17	137015	1	R.C. Network

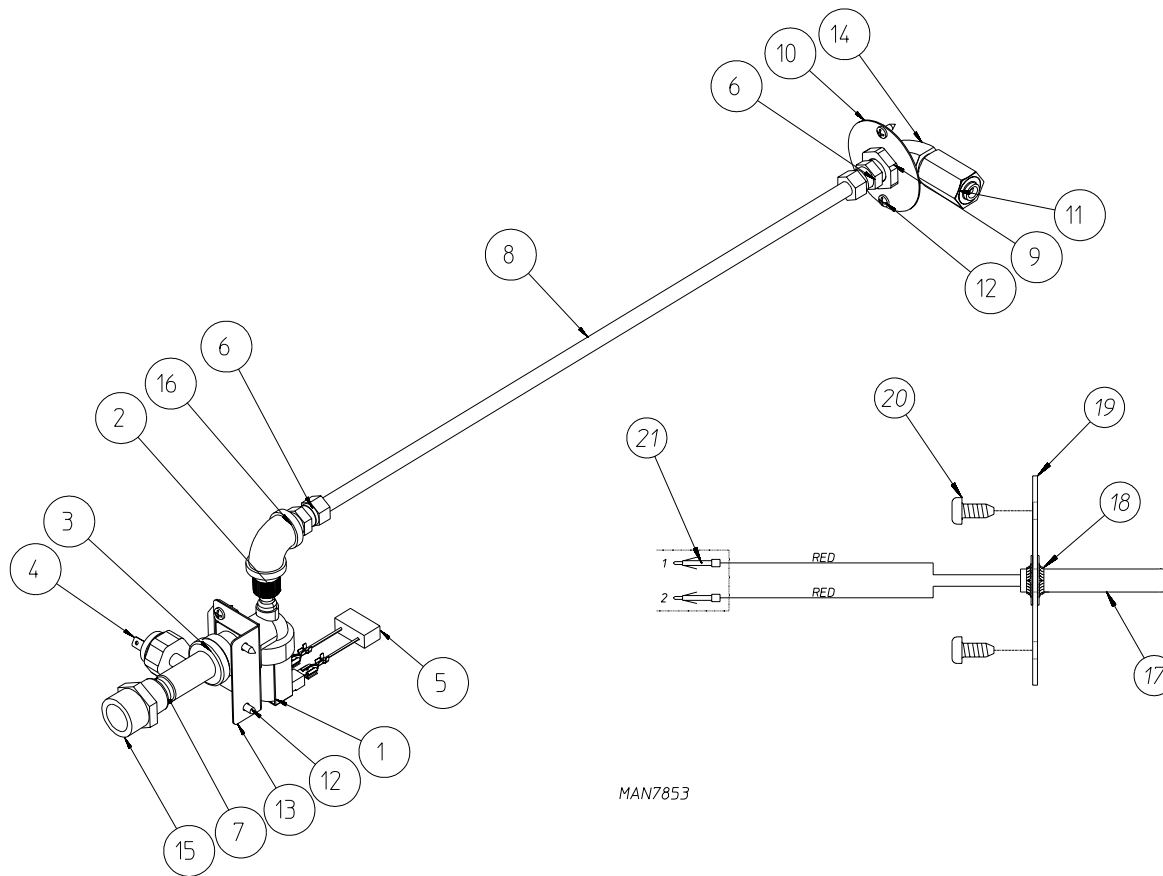
Air-Operated Steam Damper Assembly



Illus. No.	Part No.	Qty.	Description
1	165079	1	2 Stage Steam Coil Assembly (for models mfd. after August 4, 2009)
	165009	1	Steam Coil Assembly (for models mfd. before August 4, 2009)
2	153002	6	5/16" Lock Washer
3	152004	6	5/16-18 Hex Nut
4	152002	4	1/4-20 Hex Nut
5	153007	4	1/4" Lock Washer
6	820321	2	Steam Damper Hinge Assembly
7	803415	1	Steam Damper Assembly (includes illus. nos. 7, 10, and 11)
8	153007	4	1/4" Lock Washer
9	152002	4	1/4-20 Hex Nut
10	115995	108	Steam Damper Gasket (sold by the inch)
11	102350	1	Steam Damper Foam (68-1/2" length)
12	151007	1	7/16-20 Stainless Steel Acorn Nut
13	152007	1	7/16-20 Hex Nut
14	100497	1	1-1/4" Bore x 3" Stroke Piston
15	100492	1	Piston Support Bracket
16	152002	4	1/4-20 Hex Nut
17	153007	4	1/4" Lock Washer
18	100472	1	1/4" x 1/8" Connector
19	143110	1	1/4" Tubing (sold by the foot)
20	100472	1	1/4" x 1/8" Connector
21	100496	1	1/8" Needle Valve
22	143238	1	1/8" Close Nipple
23	100498	1	3-Way Micro Valve – 24 VAC
24	150002	2	#6-32 x 1" Phillips Round Head Machine Screw
25	153010	2	#6 Star Washer
26	152000	2	#6-32 Hex Nut
27	330987	1	Micro Valve Support Bracket
28	152002	2	1/4-20 Hex Nut
29	153007	2	1/4" Lock Washer
30	100520	1	1/8" N.P.T. Silencer (muffler)

Fire Suppression System Assembly

For Models Mfd. as of November 8, 2011

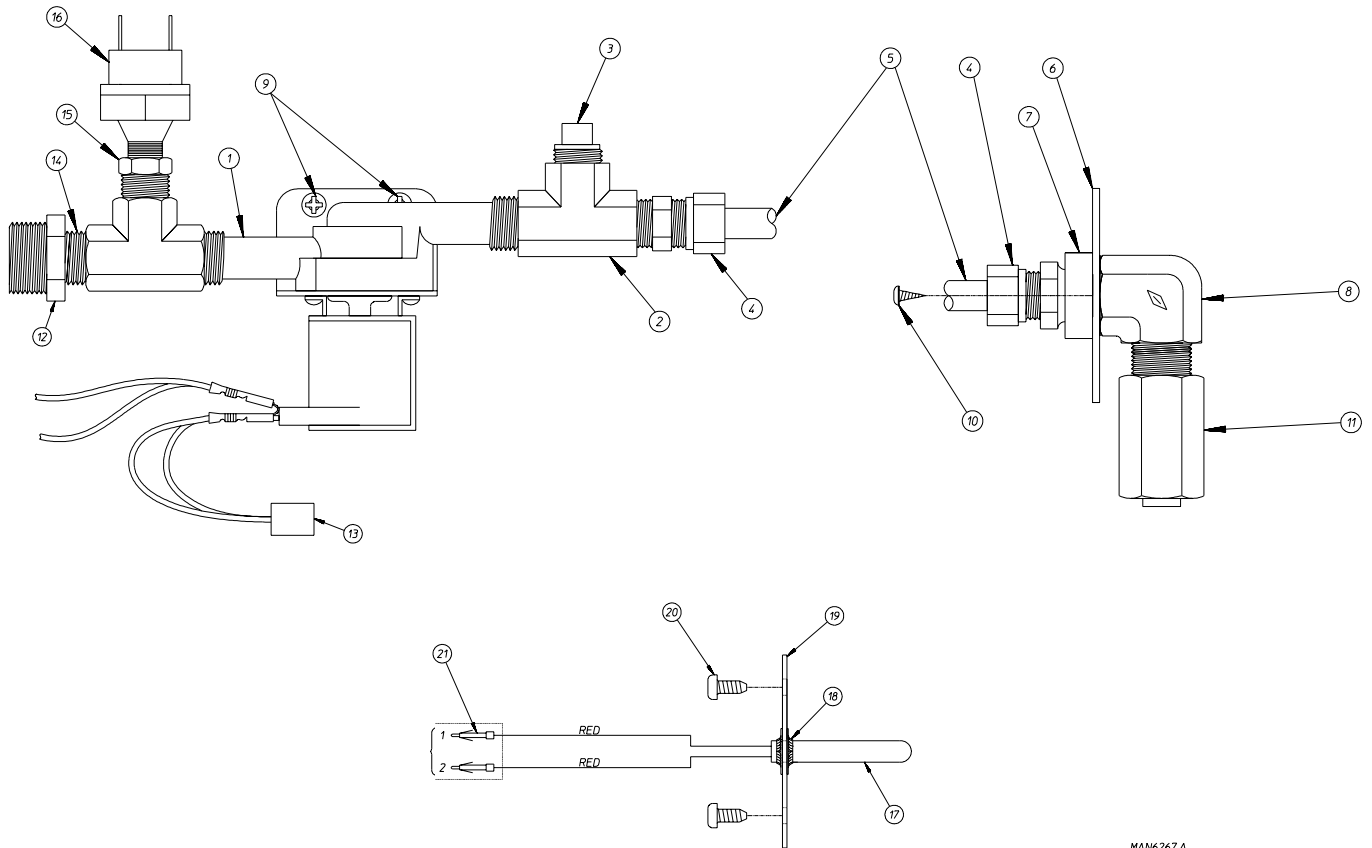


MAN7853

<u>Illus. No.</u>	<u>Part No.</u>	<u>Qty.</u>	<u>Description</u>
1	165119	1	Fire Suppression System H ₂ O Valve 24VAC
2	143183	1	7/16-20 x 3/8 NPD Brass Adaptor
3	143182	1	3/4GHT x 1/8 x 3/8 NPT Brass Tee
4	136987	1	Water Pressure Switch
5	824081	1	RC Network Assembly
6	143208	2	3/8 Comp x 3/8 MPT Brass Connect
7	143241	1	3/8 x Close Brass Nipple
8	143099	20	3/8" OD x .035 Wall Copper Tubing
9	143303	1	3/8 NPT Brass Lock Nut
10	311588	1	Fire Suppression System Sprinkler Head Mounting Plate
11	143581	1	Fire Suppression System 3GPM 3/8 NPT Spray Nozzle
12	150301	6	#8-18 x 7/16 PHL-PH-TEX PLTD
13	313962	1	Main Line F.S.S. 90° Valve Bracket
14	143155	1	3/8 Brass Street Elbow
15	143356	1	3/4 Male x 3/8 FNPT Brass Bushing
16	143310	1	3/8 Brass 90° Elbow
—	817576	1	Fire Suppression System Assembly Complete (includes illus. nos. 1 through 16)
17	822752	1	Fire Suppression System Temperature Probe Assembly (includes illus. nos. 17 through 19 and 21)
18	159007	2	Push-On Fastener
19	390390	1	Sensor Bracket ONLY
20	150301	2	#8-18 x 7/16" Phillips Pan Head TEK Screw
21	122647	1	Connector ONLY (does not include terminals)

Fire Suppression System Assemblies

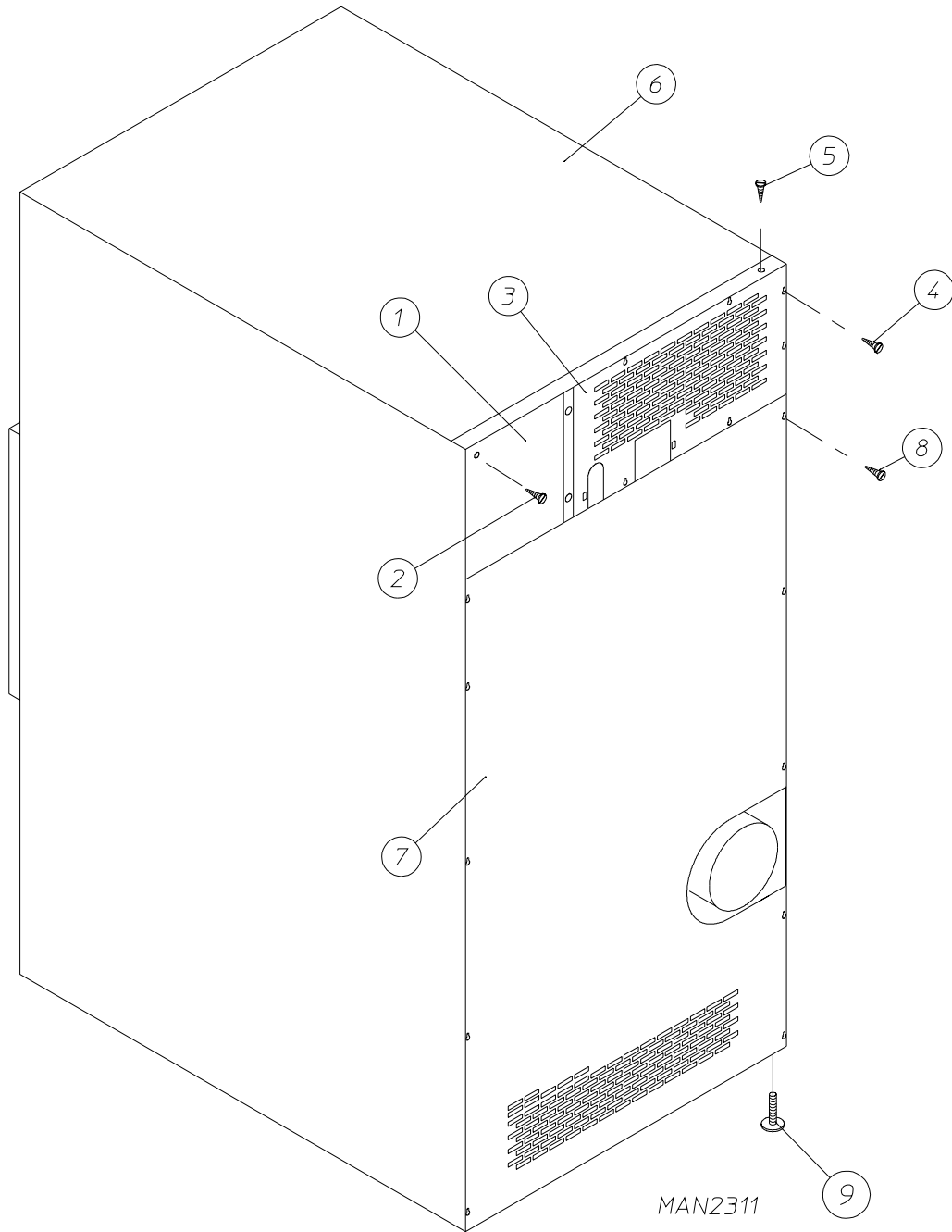
For Models Mfd. prior to November 8, 2011



MAN6267.A

Illus. No.	Part No.	Qty.	Description
1	165114	1	Fire Suppression System Solenoid Valve 24V 50/60 Hz
2	143220	2	3/8" F.P.T. Brass Tee
3	143251	1	3/8" M.P.T. Brass Plug
4	143208	2	3/8" Comp x 3/8" M.P.T. Brass Connector
5	143099	6'	3/8" OD x 0.035 Wall Copper Tubing (sold by the foot)
6	311588	1	Sprinkler Head Mounting Plate
7	143303	1	3/8" N.P.T. Brass Locknut
8	143155	1	3/8" Brass Elbow 90°
9	150300	2	#10-16 x 0.5 Hex TEK Screw
10	150301	2	#8-18 x 7/16" TEK Screw
11	143581	1	3 GPM 3/8" F.P.T. Spray Nozzle
12	143356	1	3/4 Male x 3/8 FNPT Brass Bushing
13	824081	1	R.C. Network Assembly
14	143241	1	3/8" x Close Brass Nipple
15	143315	1	3/8" M.N.P.T. x 1/8" F.N.P.T. Brass Bushing
16	136987	1	Water Jet Pressure Switch (for models mfd. as of December 1, 2003)
	817459	1	Fire Suppression System Assembly Complete (includes illus. nos. 1 through 16)
17	822752	1	Fire Suppression System Temperature Probe Assembly (includes illus. nos. 17 through 19 and 21)
18	154007	2	Push-On Fastener
19	390390	1	Sensor Bracket ONLY
20	150301	2	#8-18 x 7/16" Phillips Pan Head TEK Screw
21	122647	1	Connector ONLY (does not include terminals)

Outer Top / Back Guard Assemblies



<u>Illus. No.</u>	<u>Part No.</u>	<u>Qty.</u>	<u>Description</u>
1	323749	1	Rear Electrical Box Cover (10-13/16" x 9-3/4")
2	150301	6	#8-18 x 7/16" Phillips Pan Head TEK Screw
3	323759	1	Top Back Guard Assembly (26-7/8" x 13-15/16")
4	150301	6	#8-18 x 7/16" Phillips Pan Head TEK Screw
5	150301	8	#8-18 x 7/16" Phillips Pan Head TEK Screw
6	312527	1	Outer Top Assembly
7	314511	1	Lower Back Guard
8	150301	10	#8-18 x 7/16" Phillips Pan Head TEK Screw
9	103500	4	Leveling Leg
10	882203	1	12" to 14" Exhaust Increaser

<u>Part No.</u>	<u>Description</u>
112280	“Clean Lint Screen” Label
112519	“Routine Maintenance Schedule” Label
114001	“CAUTION – Exhaust / Lint Screen” Label
114006	“WARNING – Fire Hazards” Label
117505	Aluminum Duct Tape (sold by the foot)
120100	3/8” Straight (BX) Connector
120301	1/2” x 45° (BX) Connector
120400	3/8” Red Jacket (BX) Insulator
120500	3/8” Jiffy Clip (BX retainer clip)
120600	3/8” Greenfield (BX)
120800	1/4” In-Line Connector
120802	Red Butt Connector
120902	#74B Wire Nut
120903	Crimp-On Wire Nut
121014	1/4” Insulated (female) Terminal
121499	5-1/2” Harness Tie
121500	8” Harness Tie
121503	Harness Tie Mounting Clip
122804	Manometer (hydro gauge) for Measuring Gas Pressure
404502	White Brush-In-Cap Bottle Touch-Up Paint
404515	Coral Blue Brush-In-Cap Bottle Touch-Up Paint
882458	Tumbler Bearing Puller

