

**Maytag  
MLG-31 PCA  
330 Parts Manual  
2002**

---

---

***For Internal Use Only***

---

---

**RETAIN THESE INSTRUCTIONS IN A SAFE PLACE  
FOR FUTURE REFERENCE**

**Maytag**  
One Dependability Square  
Newton, Iowa 50208  
(641) 787-7000

## Retain This Manual In A Safe Place For Future Reference

This product embodies advanced concepts in engineering, design, and safety. If this product is properly maintained, it will provide many years of safe, efficient, and trouble-free operation.

*ONLY properly licensed technicians should service this equipment.*

**OBSERVE ALL SAFETY PRECAUTIONS** displayed on the equipment or specified in the installation/operator's manual included with the dryer.

### **FOR YOUR SAFETY**

**Do not store or use gasoline or other flammable vapors or liquids in the vicinity of this or any other appliance**

### **POUR VOTRE SECURITE**

**Ne pas entreposer ni utiliser d' essence ni d' autres vapeurs ou liquides inflammables dans le voisinage de cet appareil ou de yout autre appare il**

We have tried to make this manual as complete as possible and hope you will find it useful. Manufacturer reserves the right to make changes from time to time, without notice or obligation, in prices, specifications, colors, and material, and to change or discontinue models.

## Important

For your convenience, log the following information:

DATE OF PURCHASE \_\_\_\_\_ MODEL NO. \_\_\_\_\_

DEALER'S NAME \_\_\_\_\_

Serial Number(s) \_\_\_\_\_

\_\_\_\_\_  
\_\_\_\_\_

For replacement parts, contact the dealer from which the dryer was purchased or contact:

### **MAYTAG**

403 West Fourth St. North  
Newton, Iowa 50208  
(641) 787-7000

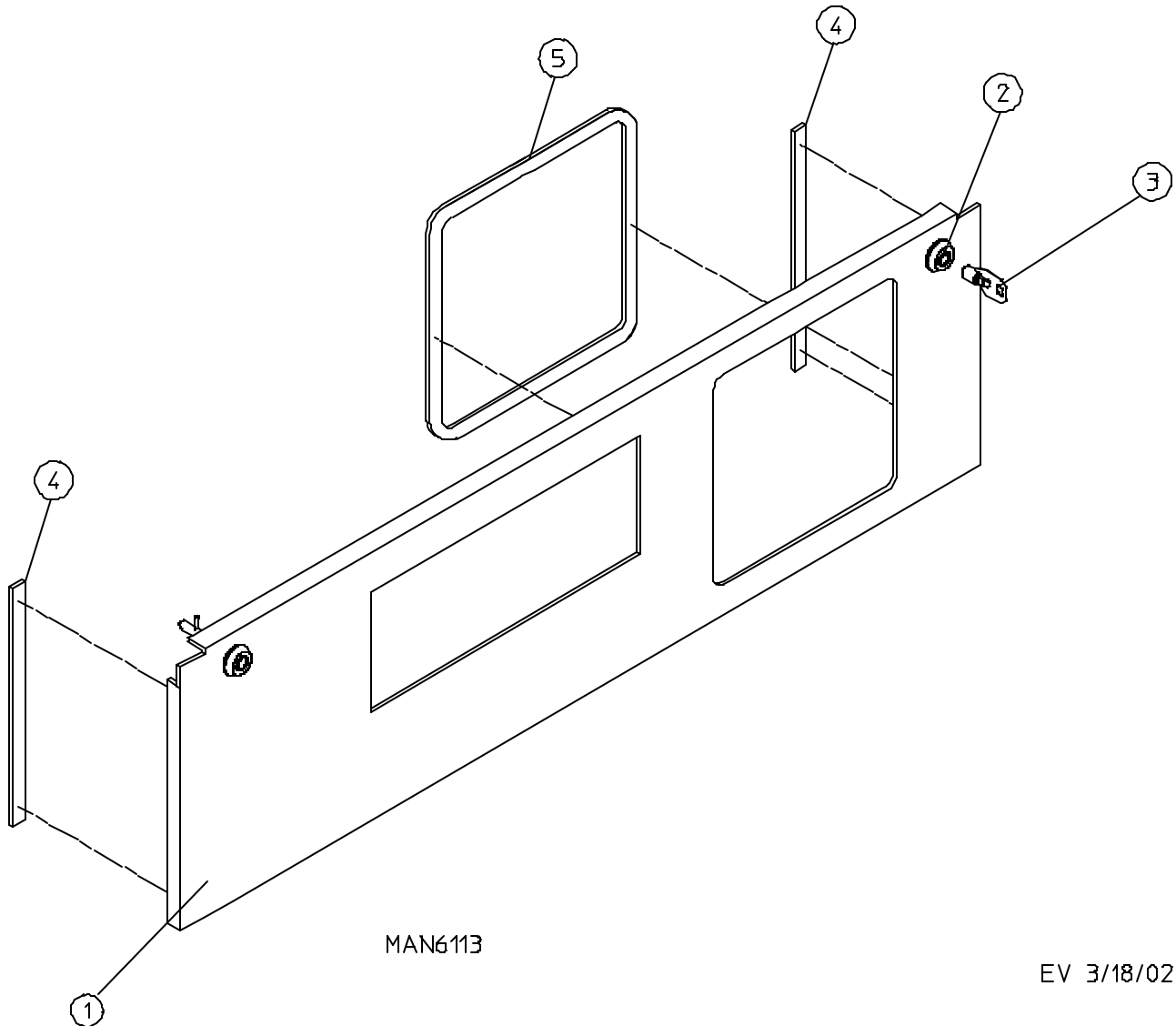
The illustrations on the following pages may not depict your particular dryer exactly. The illustrations are a composite of the various dryer models. Be sure to check the descriptions of the parts thoroughly before ordering.

### **“IMPORTANT NOTE TO PURCHASER”**

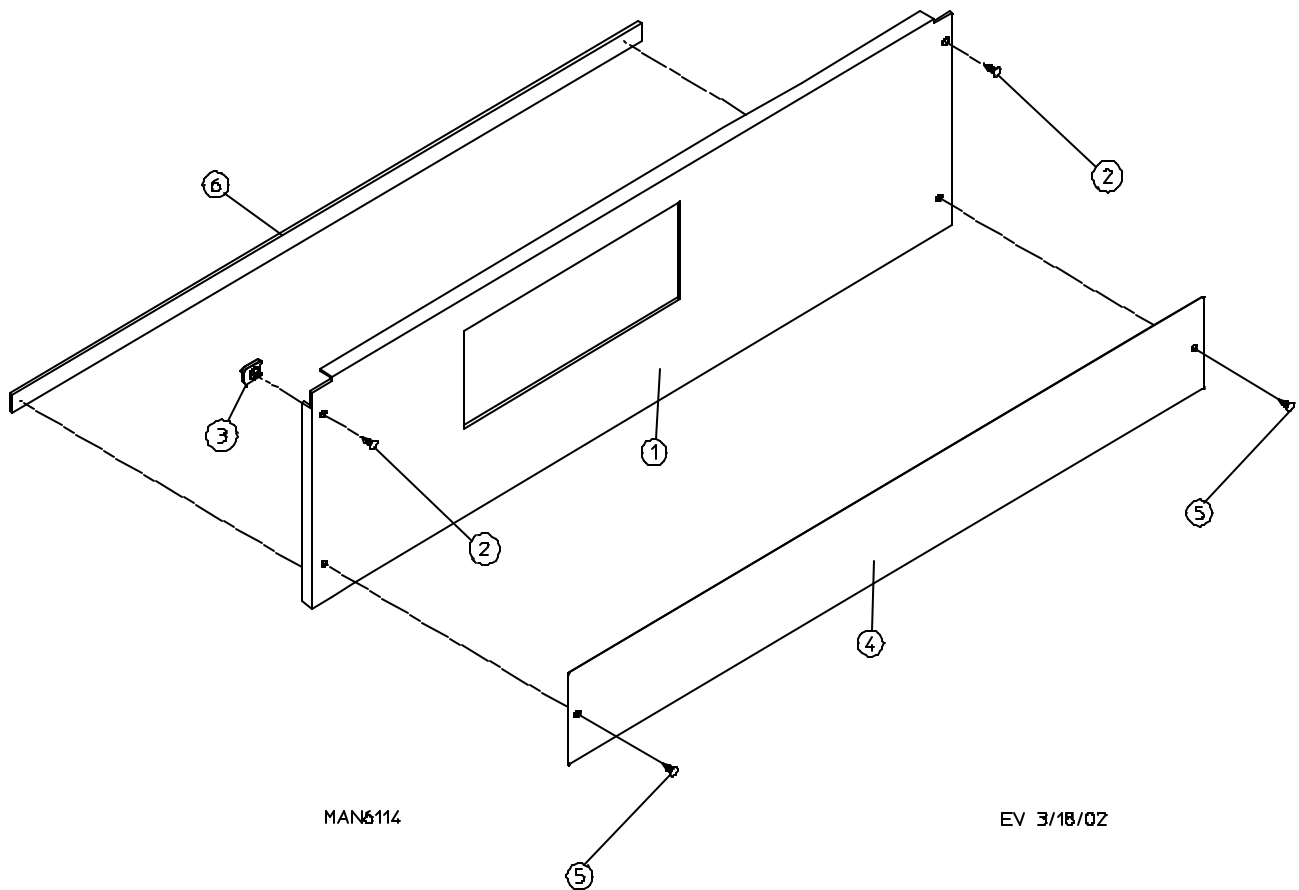
Information **must be** obtained from your local gas supplier on the instructions to be followed if the user smells gas. These instructions **must be** posted in a prominent location near the dryer.

# ***Table of Contents***

Coin Control Door Assembly .....	2
Lint Door Assembly .....	3
Lint Drawer (Basket) Assembly .....	4
Single Hanke Coin, DMC Control Panel Assembly .....	5
Hanke Microprocessor Coin Acceptor Listing .....	6
Coin Vault Assembly .....	7
DMC Control Box Assembly .....	8, 9
Upper Front Panel Assembly .....	10
Lower Front Panel Assembly .....	11
Main Door Assembly .....	12
Main Door Switch Assembly .....	13
Basket (Tumbler)/Support Assemblies .....	14, 15
Basket (Tumbler) Brush Assembly .....	16
Temperature Sensor Probe Assembly .....	17
Basket (Tumbler) Bearing Assembly .....	18
Lint Drawer (Basket) Switch Assembly .....	19
Totally Enclosed, Non-Vent (T.E.N.V.) Motor/Idler Assemblies .....	20, 21
Gas Train Assembly .....	22, 23
Burner Box/Piping Assemblies .....	24
Sail Switch Assembly .....	25
Back Guard Assemblies .....	26
Optional Gas Piping and Exhaust Ducting Kits .....	27
12-Rib 95" (J) Poly Belt Arrangement .....	28
Bottom Exhaust Duct Assembly and Cabinet Hi-Limit .....	29
Additional Parts Available .....	30



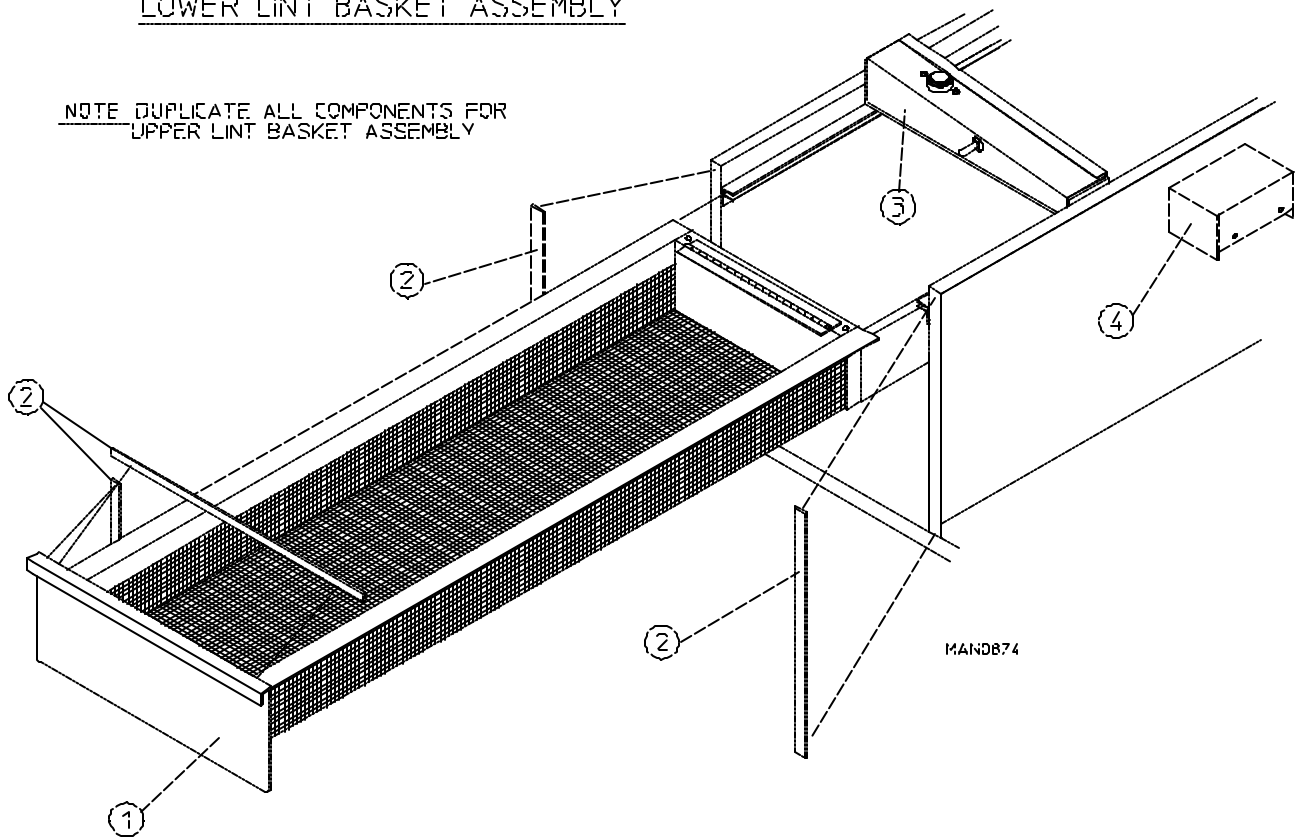
<u>Illus. No.</u>	<u>Part No.</u>	<u>Qty.</u>	<u>Description</u>
1	883379	1	White Coin Control Door Assembly Complete Less Locks (includes illus. nos. 1, 4, and 5)
	883380	1	Bisque Coin Control Door Assembly Complete Less Locks (includes illus. nos. 1, 4, and 5)
	883376	1	Stainless Steel Coin Control Door Assembly Complete Less Locks (includes illus. nos. 1, 4, and 5)
2	160040	2	ACE® Lock Assembly ONLY
3	160140	-	Key ONLY (key number XX4451)
4	117603	1	Noise Suppressor Tape (sold by the foot)
5	117605	2	Neoprene Sponge Tape (sold by the foot)



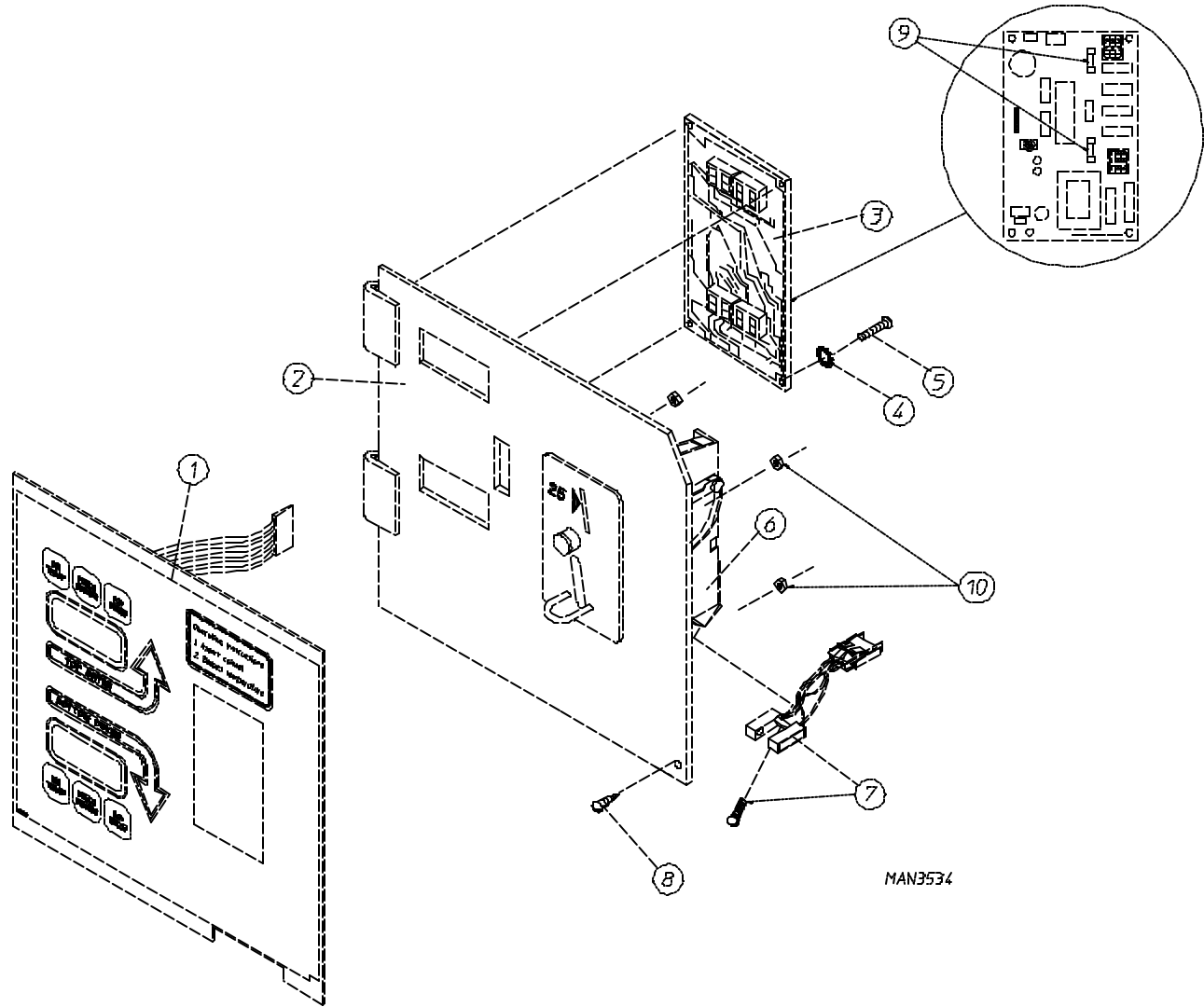
<u>Illus. No.</u>	<u>Part No.</u>	<u>Qty.</u>	<u>Description</u>
1	883377	1	White Lint Door Assembly Complete Less Locks (includes illus. nos. 1, 4, and 6)
	883378	1	Bisque Lint Door Assembly Complete (includes illus. nos. 1, 4, and 6)
	883368	1	Stainless Steel Lint Door Assembly Complete (includes illus. nos. 1, 4, and 6)
2	150314	2	#10-32 x 1/2" TORX Screw
	400505	-	TORX Bit for above
3	154011	2	#10-32 Multi-Thread U-Nut
4	883369	1	Black Trim
5	150319	2	#10-32 x 1/2" TORX Black Screw
6	117600	3	Neoprene Sponge Tape (sold by the foot)

LOWER LINT BASKET ASSEMBLY

NOTE: DUPLICATE ALL COMPONENTS FOR  
UPPER LINT BASKET ASSEMBLY



<u>Illus. No.</u>	<u>Part No.</u>	<u>Qty.</u>	<u>Description</u>
1	883401	1	White Lint Drawer (basket) Assembly Complete (includes illus. nos. 1 and 2)
	883402	1	Bisque Lint Drawer (basket) Assembly Complete (includes illus. nos. 1 and 2)
	883381	1	Black Lint Drawer (basket) Assembly Complete (includes illus. nos. 1 and 2)
2	117604	3	Neoprene Sponge Tape (sold by the foot)
3	-----	1	Temperature Sensor Bracket (refer to <b>Temperature Sensor Probe Assembly</b> on <b>page 17</b> )
4	-----	1	Lint Drawer (basket) Switch (refer to <b>Lint Drawer (Basket) Switch Assembly</b> on <b>page 19</b> )



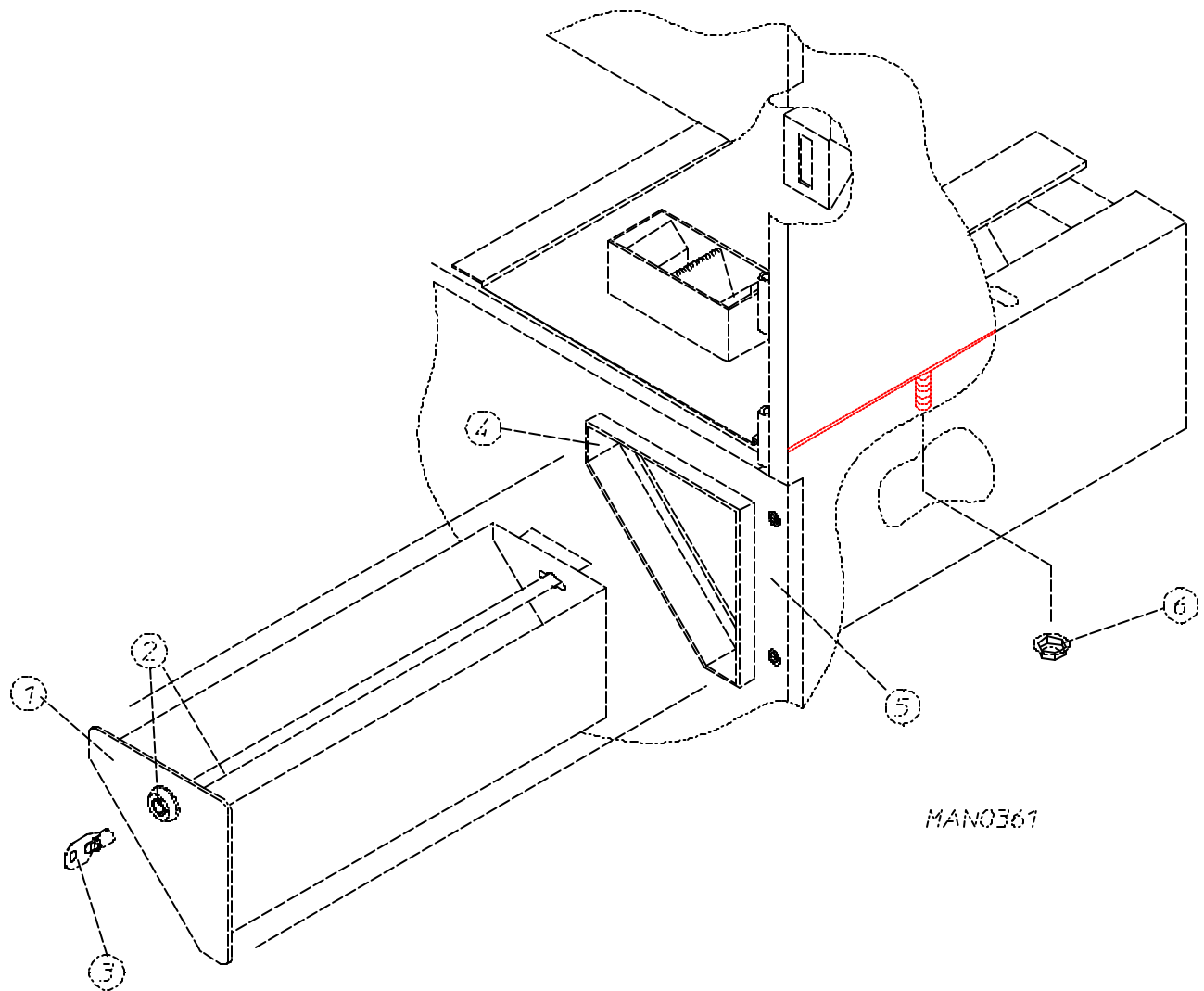
<u>Illus. No.</u>	<u>Part No.</u>	<u>Qty.</u>	<u>Description</u>
1	112566	1	Hanke Single Coin Twin Keyboard (touch pad) Label
2	881482	1	Single Coin Control Panel Complete Less Acceptor - 24 VAC (includes illus. nos. 1 through 5, 9, and 10)
	881483	1	Hanke Dual Microprocessor Controller (DMC) Control Panel with Keyboard (touch pad) Label ONLY (includes illus. nos. 1 and 2)
3	137234	1	Phase 5 Dual Microprocessor Controller (DMC) ONLY
4	153010	2	#6 Star Washer
5	150005	2	#6-32 x 1/4" Phillips Round Head Machine Screw
6	-----	-	Coin Acceptor with Optic Switch (refer to <b>Hanke Microprocessor Coin Acceptor Listing</b> on <b>page 6</b> )
7	881143	1	Hanke Optical Switch ONLY
8	150309	1	#10-16 x 1/2" Hex Head TEK Crimpite Screw
9	136048	2	1/8-Amp (slo blo) Fuse
10	152102	4	M3 Metric Hex Nut

**NOTE:** Coin acceptors listed include optical switch(es).

### **Single Coin\***

<u>ADC Part No.</u>	<u>Nation</u>	<u>Description</u>
881163	United States	25¢ Optic Coin Acceptor
881450	Canada	25¢ Canadian Optic Coin Acceptor
881451	-----	0.880 x 0.062 Token Optic Coin Acceptor
881636	-----	0.800 x 0.07 Token Optic Coin Acceptor

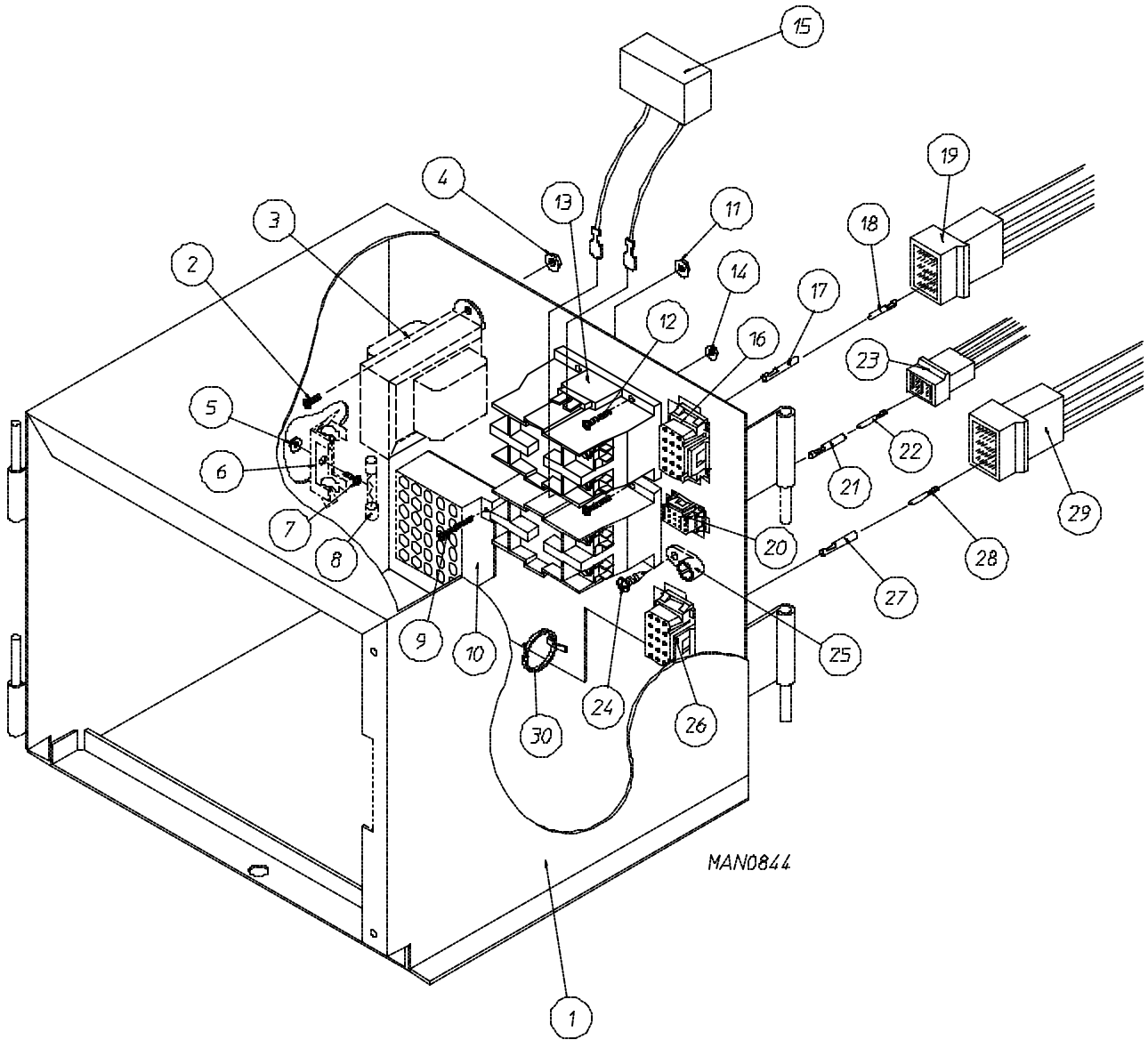




MAN0361

<u>Illus. No.</u>	<u>Part No.</u>	<u>Qty.</u>	<u>Description</u>
1	883347	1	Coin Box with Black Face Plate (no lock)
	883348	1	Black Coin Box Face Plate ONLY
	850975	1	Coin Box ONLY
2**	160036	1	Lock Assembly with Key
3**	160136	1	Key ONLY
4	883383	1	Black Coin Vault Assembly ONLY Less Lock (includes illus. nos. 1, 4, and 6)
	883382	1	Black Coin Vault ONLY
5	-----	1	Lower Front Panel Assembly (refer to <b>Lower Front Panel Assembly</b> on <b>page 11</b> )
6	152014	4	1/4-20 Free Spin Wash Nut

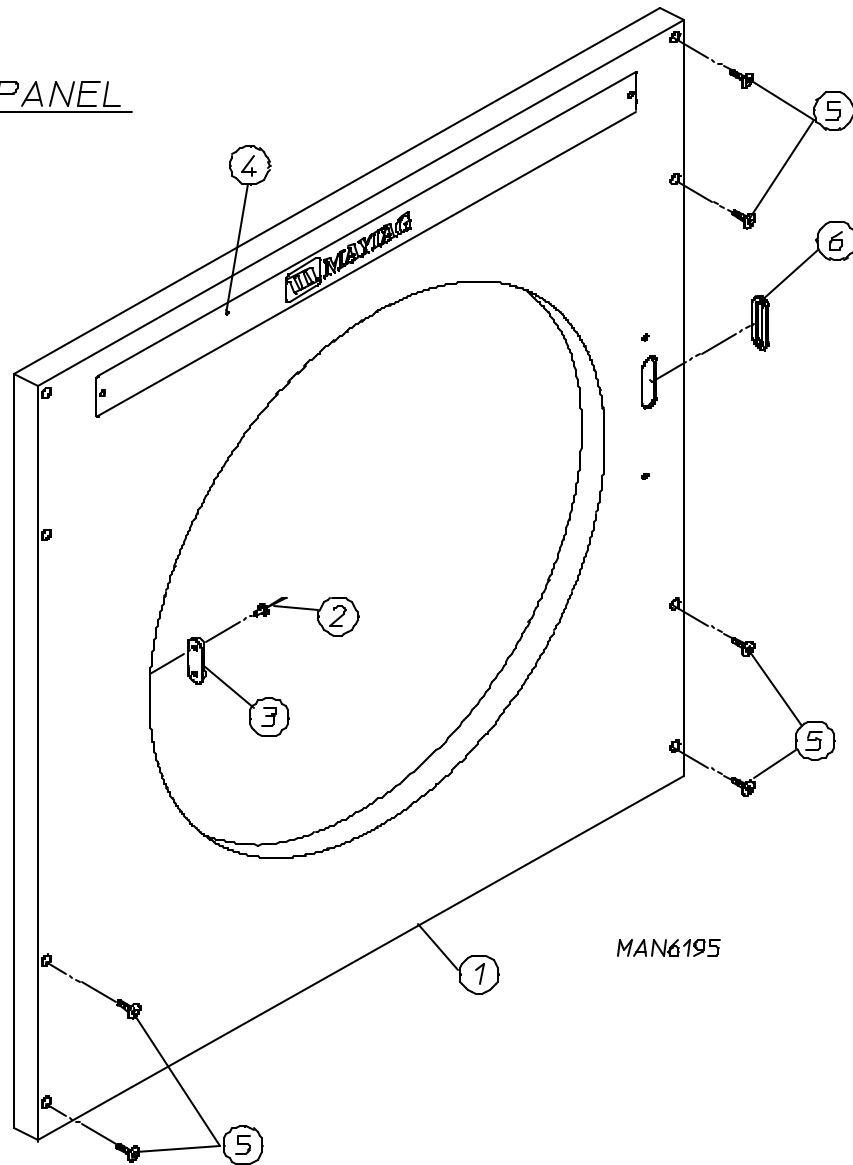
\*\* Specify key number when ordering.



<u>Illus. No.</u>	<u>Part No.</u>	<u>Qty.</u>	<u>Description</u>
1	824439	1	Electric Box Complete - 120 Volt (includes illus. nos. 1 through 17, 20, 21, and 24 through 27)
	824437	1	Electric Box Complete - 208 Volt (includes illus. nos. 1 through 17, 20, 21, and 24 through 27)
	824438	1	Electric Box Complete - 240 Volt (includes illus. nos. 1 through 17, 20, 21, and 24 through 27)
2	150103	2	#8-32 x 3/4" Phillips Round Head Machine Screw
3	141403	1	Transformer - 24 VAC
4	151001	2	#8-32 Pal Nut
5	151000	1	#6-32 Pal Nut
6*	136008	**	3-Position Fuse Block
7	150002	1	#6-32 x 1" Round Head Machine Screw
8*	136057	3**	1/2-Amp (slo blo) Fuse ONLY
9	150002	2	#6-32 x 1" Round Head Machine Screw
10	120715	1	30-Position Terminal Block
11	151000	2	#6-32 Pal Nut
12	150103	4	#8-32 x 3/4" Phillips Round Head Machine Screw
13	132451	2	2-Pole Contactor
14	151001	4	#8-32 Pal Nut
15	824828	2	RC Network with Connectors
16	122626	1	15-Pin Socket Connector ONLY
17	122705	9	Socket Terminal ONLY
18	122704	9	Pin Terminal ONLY
19	122625	1	15-Pin Connector ONLY
	137025	1	6/15-Position Strain Relief...Not Illustrated
20	122631	1	6-Pin Socket Connector ONLY
21	122705	6	Socket Terminal ONLY
22	122704	6	Pin Terminal ONLY
23	122630	1	6-Pin Connector ONLY
	137025	1	6/15-Position Strain Relief...Not Illustrated
24	150309	1	#10-16 x 1/2" Hex Head TEK Crimptite Screw
25	121010	1	L-70 Terminal Lug
26	122626	1	15-Pin Socket Connector ONLY
27	122705	7	Socket Terminal ONLY
28	122704	7	Pin Terminal ONLY
29	122625	1	15-Pin Connector ONLY
	137025	1	6/15-Position Strain Relief...Not Illustrated
30	121494	10	Push-Mount Wire Tie
--	122801	1	Pin/Socket Extraction Tool...Not Illustrated
--	122800	1	Microprocessor (female) Pin Extraction Tool

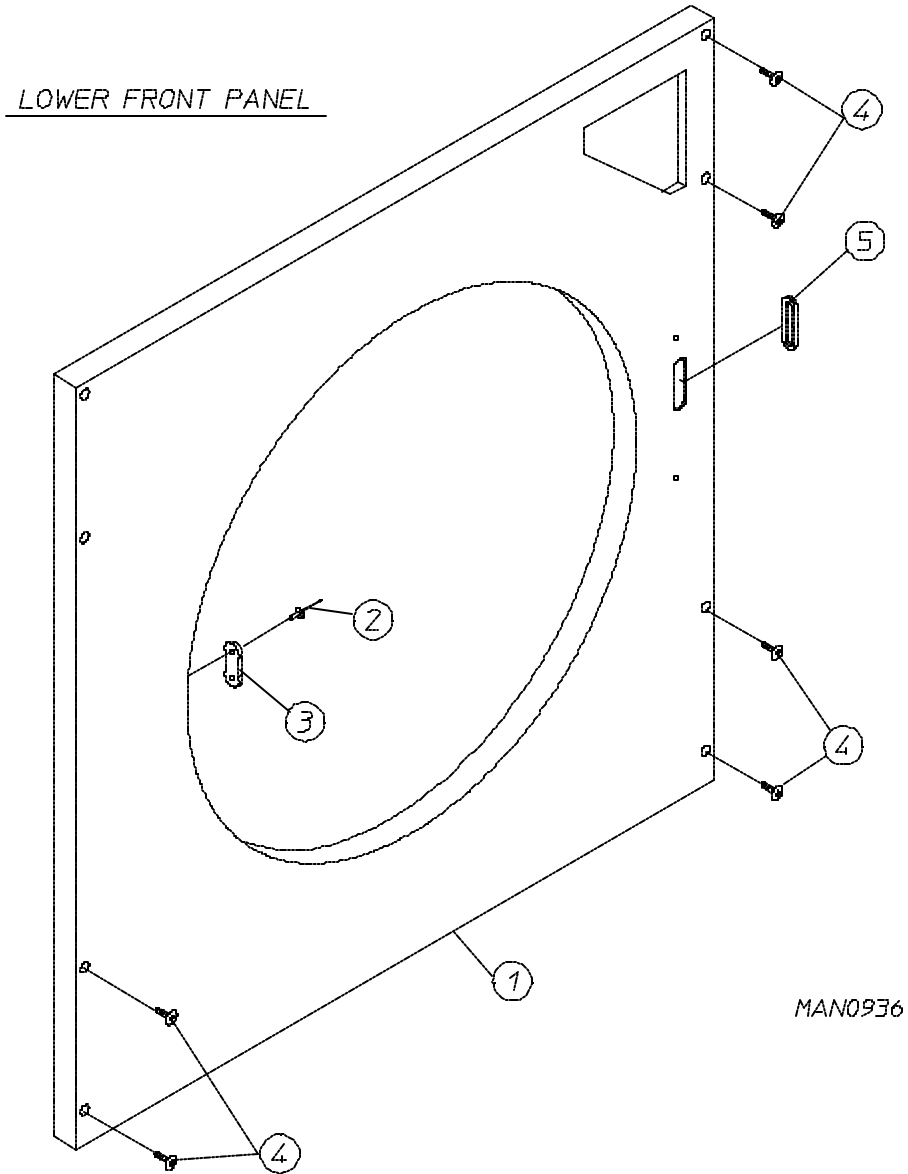
\* Check fuse rating for verification.

\*\* For 120 volt application the quantity is 1. For 208/240 volt application the quantity is 2.

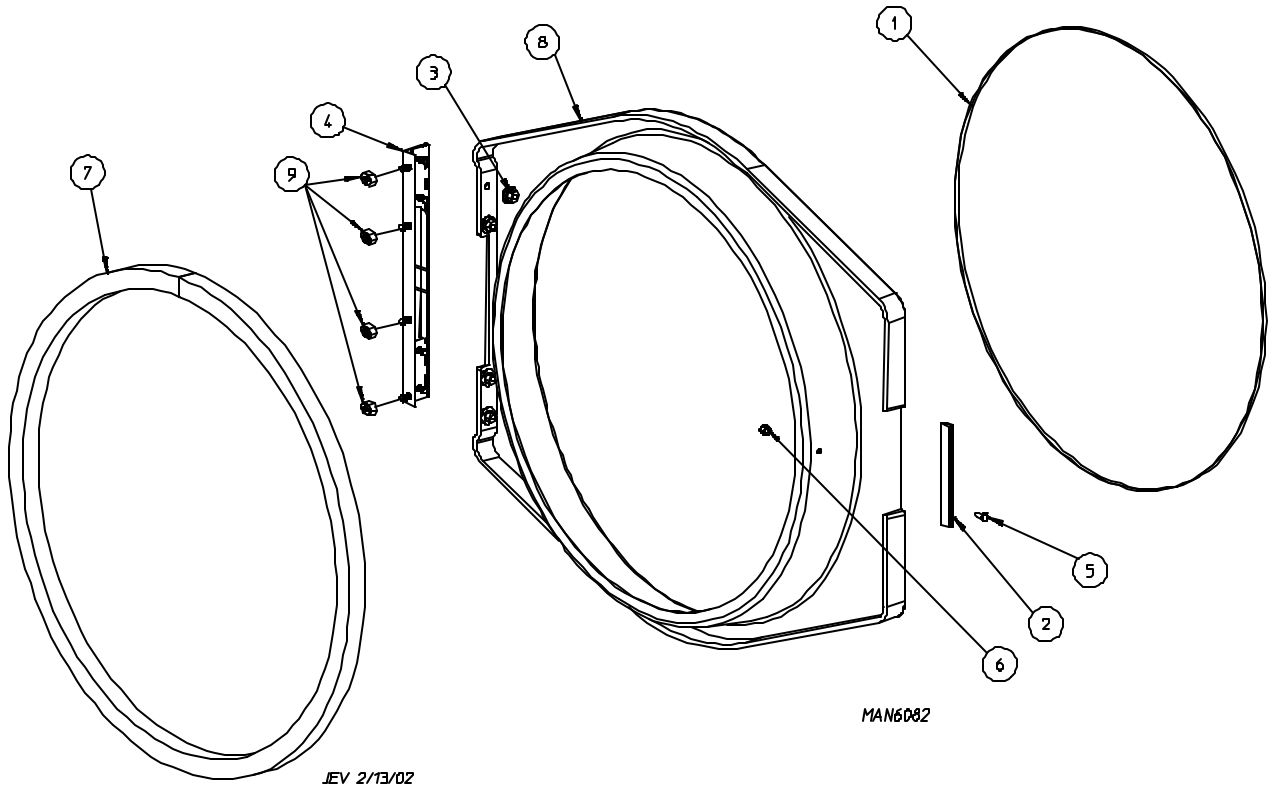
UPPER FRONT PANEL

JEV 7/1/02

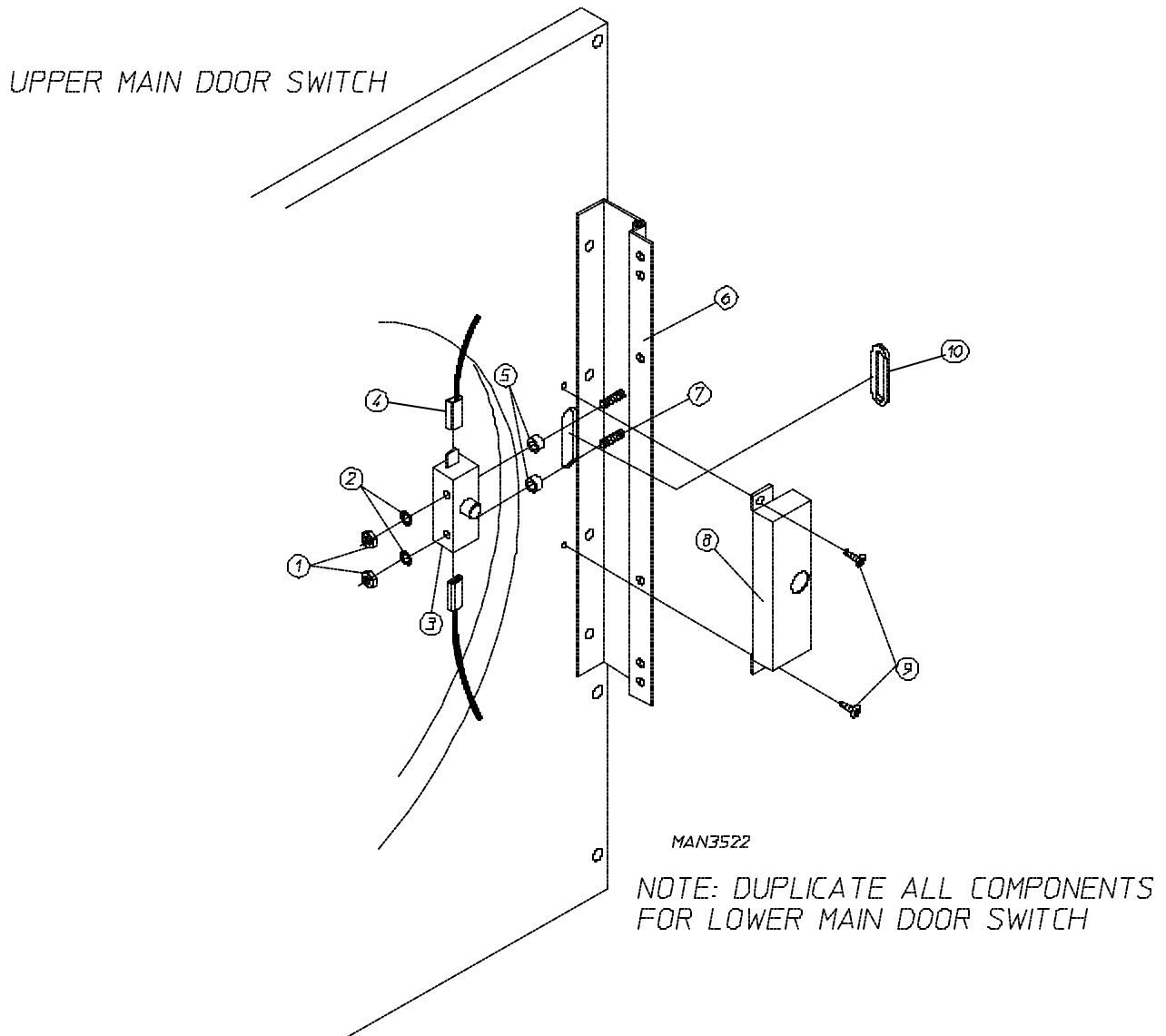
<u>Illus. No.</u>	<u>Part No.</u>	<u>Qty.</u>	<u>Description</u>
1	883373	1	Upper White Front Panel without Hinge or Logo (includes illus. nos. 1 through 3 and 6)
	883374	1	Upper Bisque Front Panel without Hinge or Logo (includes illus. nos. 1 through 3 and 6)
	883370	1	Upper Stainless Steel Front Panel without Hinge or Logo (includes illus. nos. 1 through 3 and 6)
2	154215	2	1/8" Pop Rivet
3	881987	1	Friction Door Latch Kit (includes illus. nos. 2 and 3)
4	-----	1	Maytag Logo with Black Trim
5	150313	8	#10-16 x 1/2" TORX Type I Screw
	400505	1	TORX Bit for removing above
6	121405	1	Rubber Grommet



<u>Illus. No.</u>	<u>Part No.</u>	<u>Qty.</u>	<u>Description</u>
1	883371	1	Bottom White Front Panel Assembly Complete without Hinge (includes illus. nos. 1 through 3 and 5)
	883372	1	Bottom Bisque Front Panel Assembly Complete without Hinge (includes illus. nos. 1 through 3 and 5)
	883488	1	Bottom Stainless Steel Front Panel Assembly Complete without Hinge (includes illus. nos. 1 through 3 and 5)
2	154215	2	1/8" Pop Rivet
3	881987	1	Friction Door Latch Kit (includes illus. nos. 2 and 3)
4	150313	9	#10-16 x 1/2" TORX Type I Screw
	400505	1	TORX Bit for removing above
5	121405	1	Rubber Grommet

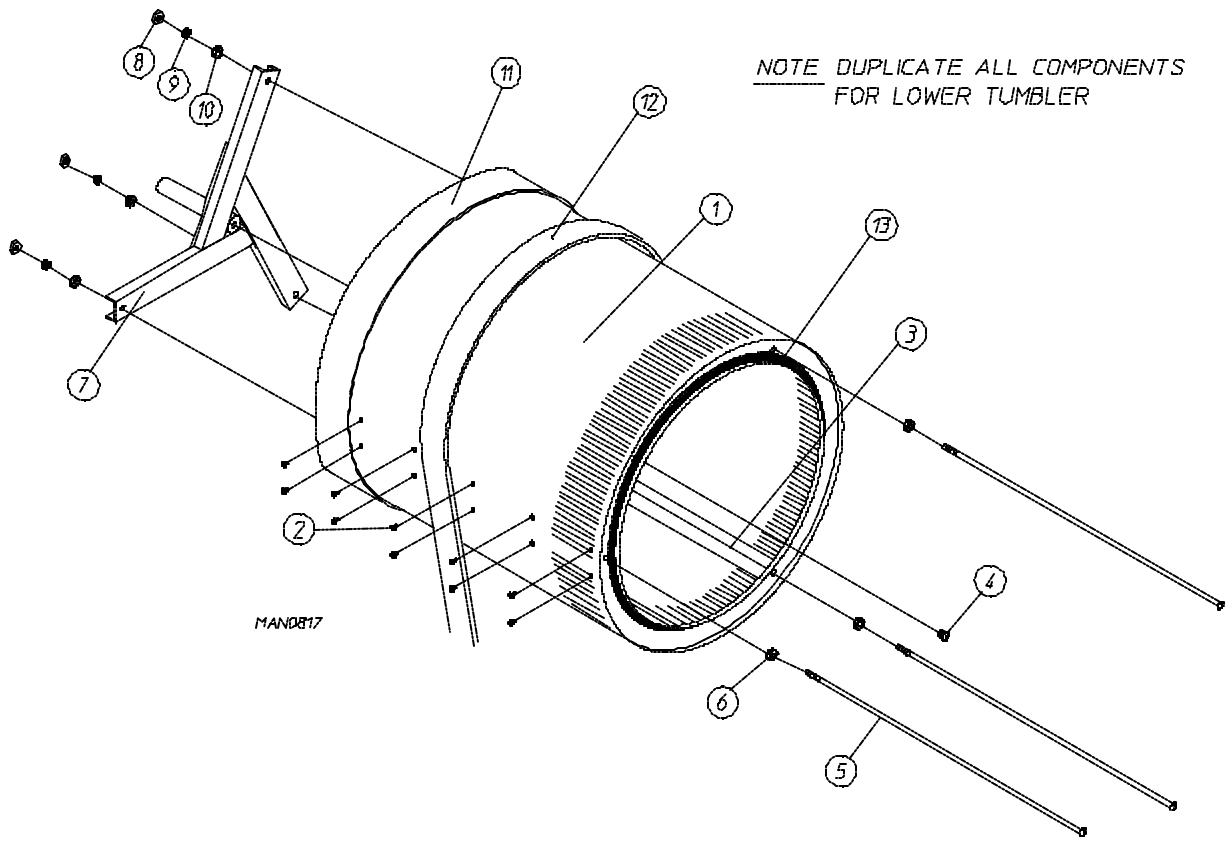


<u>Illus. No.</u>	<u>Part No.</u>	<u>Qty.</u>	<u>Description</u>
1	182210	1	Main Door Glass
2	102328	1	Handle Edge
3	152014	4	1/4-20 Free Spin Wash Nut
4	801524	1	Black Door Hinge
5	150120	1	Latch Screw
6	151010	1	Black Acorn Nut
7	102349	4	Gasket
8	882991	4	Black Main Door Assembly (includes illus. nos. 1 through 8)
9	152014	4	1/4-20 Free Spin Wash Nut



<u>Illus. No.</u>	<u>Part No.</u>	<u>Qty.</u>	<u>Description</u>
1	152013	2	#6-32 Hex Nut
2	153008	2	#6 Lock Washer
3	137005	1	Single-Pole Door Switch (SDS)
4	121028	2	Insulated Female Terminal
5	154281	2	3/8" Standard Nylon Spacers
6	801524	1	12-1/2" Black Cold Rolled Steel (CRS) Main Door Hinge Assembly
7	153565	2	#6 Stud
8	881246	1	Main Door Switch Housing ONLY
9	150201	2	#10-32 x 1/4" Phillips Pan Head Screw
10	121405	1	Rubber Grommet

UPPER TUMBLER / SUPPORT

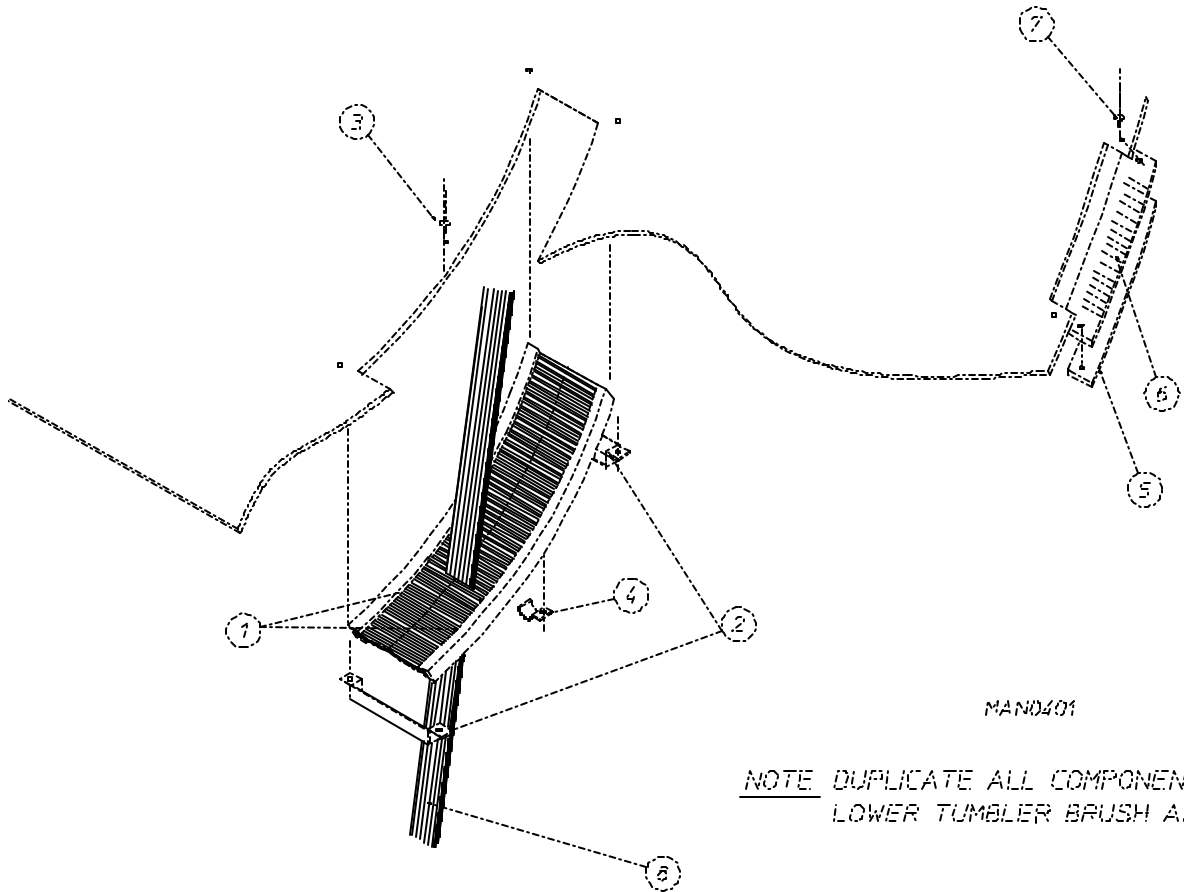




---

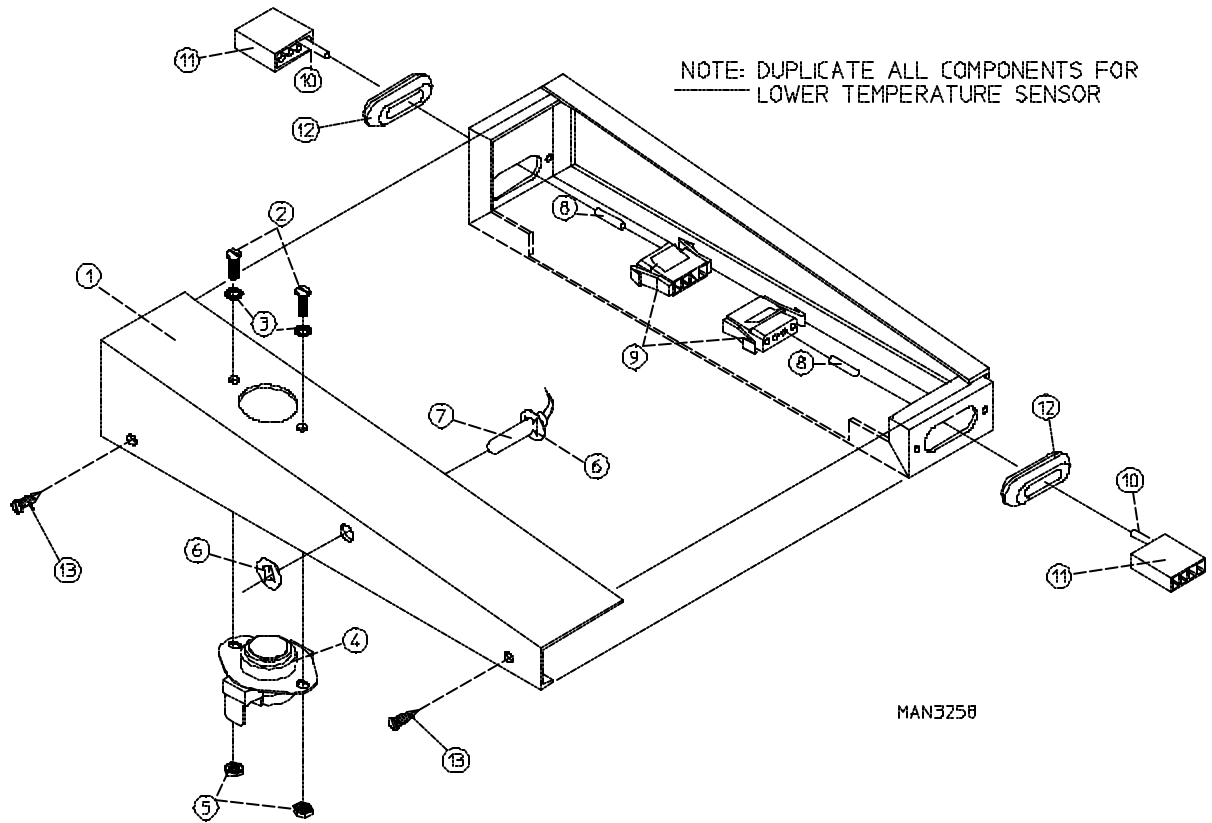
<u>Illus. No.</u>	<u>Part No.</u>	<u>Qty.</u>	<u>Description</u>
1	800832	1	Basket (tumbler) and Support Assembly Complete with Felt Collar (includes illus. nos. 1 through 11 and 13)
	800892	1	Stainless Steel Basket (tumbler) and Support Assembly Complete with Felt Collar (includes illus. nos. 1 through 11 and 13)
	800722	1	Basket (tumbler) ONLY without Felt Collar (includes illus. nos. 1, 2, and 3)
	800842	1	Stainless Steel Basket (tumbler) ONLY without Felt Collar (includes illus. nos. 1, 2, and 3)
2	150313	30	#10-16 x 1/2" TORX Plus Type 1 Head Crimptite Screw
3	301315	2	Galvanized Short Basket (tumbler) Rib
	301316	1	Galvanized Tall Basket (tumbler) Rib
	301414	2	Stainless Steel Short Basket (tumbler) Rib
	301415	1	Stainless Steel Tall Basket (tumbler) Rib
4	150500	1	5/16-18 x 3/8" Socket Button Head Screw
5	100915	3	3/18-16 x 31-1/8" Tie Rod
6	153004	3	3/8" x 1" Flat Washer
7	850061	1	Basket (tumbler) Support ONLY
8	152005	3	3/8-16 Hex Nut
9	153005	3	3/8" Lock Washer
10	153004	3	3/8" x 1" Flat Washer
11	116003	1	Felt Collar
	401010	1	#847 Adhesive for Felt Collar (5 oz. tube)
12	100173	1	12-Rib 95" Belt
13	115992	1	Felt Collar
	401010	1	#847 Adhesive for Felt Collar (5 oz. tube)

UPPER TUMBLER BRUSH

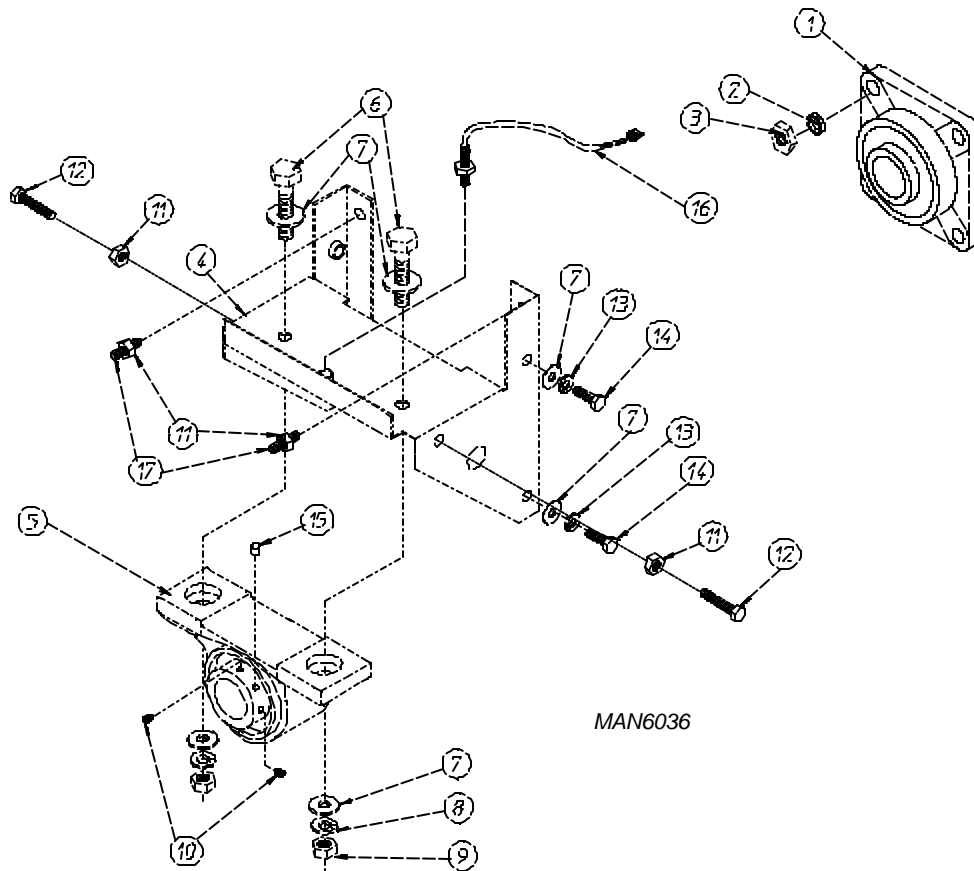


<u>Illus. No.</u>	<u>Part No.</u>	<u>Qty.</u>	<u>Description</u>
1	170198	2	Drive Belt Sealing Brush
2	317656	2	Sealing Brush Clip End
3	154210	6	5/32" x 3/16" Pop Rivet
4	120117	2	3/8" EMT Hanger
5	317651	1	Wrapper Gasket Strip
6	102325	1	8-1/2" x 1-1/2" x 1/8" Wrapper Channel Gasket
7	154210	2	5/32" x 3/16" Pop Rivet
8	100173	1	12-Rib 95" Belt

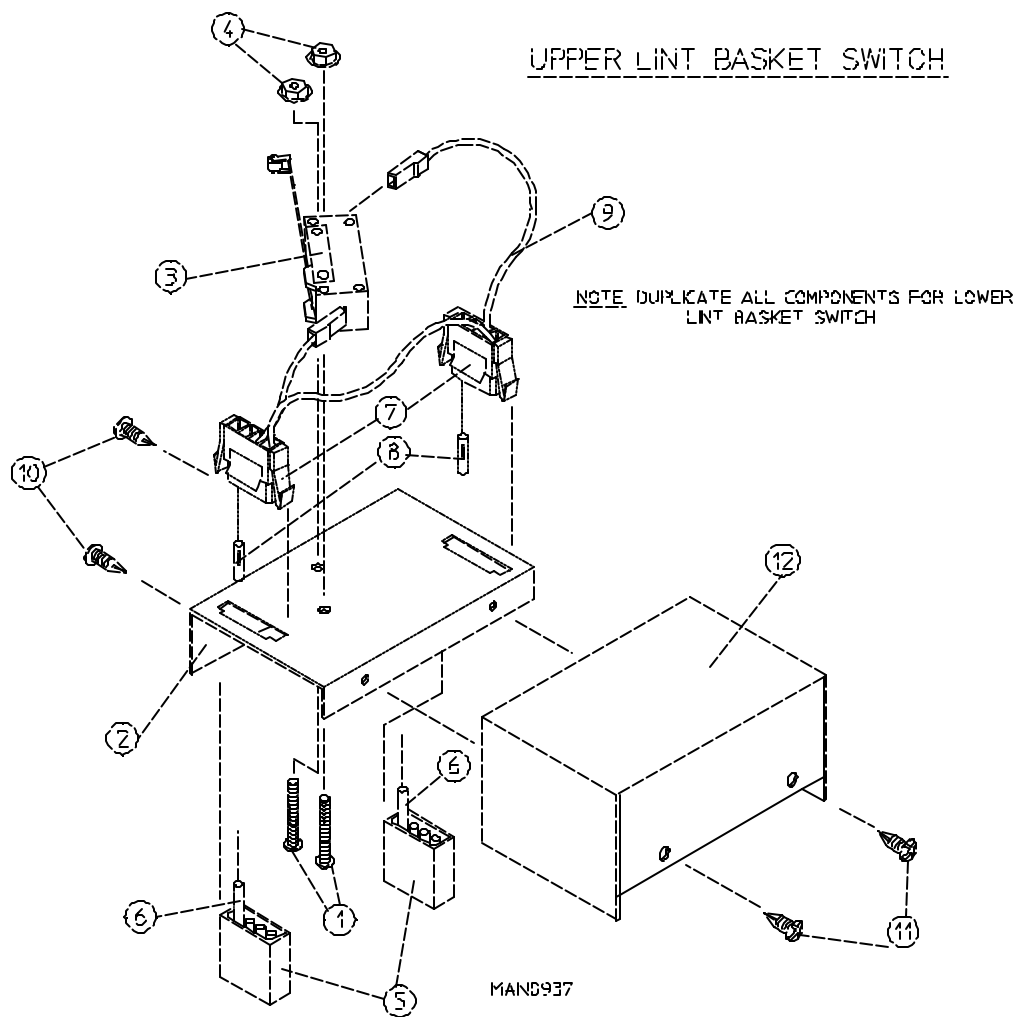
UPPER TEMPERATURE SENSOR



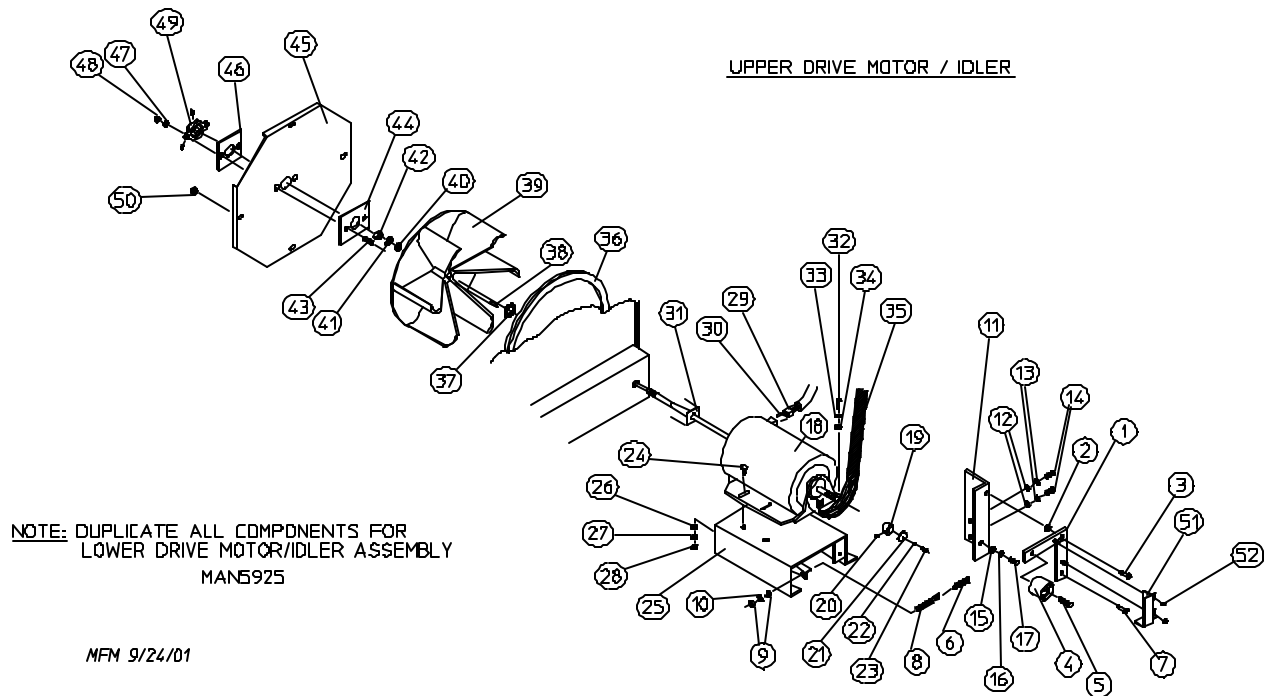
<u>Illus. No.</u>	<u>Part No.</u>	<u>Qty.</u>	<u>Description</u>
1	801409	1	Temperature Sensor Bracket Assembly Complete (includes illus. nos. 1 through 9, 12, and 13)
2	150000	2	#6-32 x 1/4" Round Head Machine Screw
3	153010	2	#6 Star Washer
4	130106	1	170° Large Thermostat
5	152013	2	#6-32 Hex Nut
6	154007	2	1/4" Tinnerman Push On Fastener
7	880111	1	Dual Microprocessor Controller (DMC) 1/4" Temperature Sensor Probe Assembly (includes illus. nos. 6 through 9)
8	122701	8	Socket Terminal ONLY
9	122605	2	4-Pin Socket Connector ONLY
10	122700	8	Pin Terminal ONLY
11	122604	2	4-Pin Connector ONLY
	122801	1	Pin/Socket Extraction Tool...Not Illustrated
12	121405	2	Rubber Grommet
13	150301	2	#8-18 x 7/16" Phillips Pan Head TEK Screw



<u>Illus. No.</u>	<u>Part No.</u>	<u>Qty.</u>	<u>Description</u>
1	880203	1	1-3/8" Flange Bearing ONLY
2	153005	4	3/8" Lock Washer
3	152005	4	3/8-16 Hex Nut
4	882545	1	Bearing Assembly Complete (includes illus. nos. 4 through 17) For Models Mfd. with Rotational Sensor
	882543	1	Bearing Support ONLY (for models mfd. with rotational sensor)
5	880779	1	1-3/8" Pillow Block Bearing (for models mfd. with rotational sensor)
6	150601	2	3/8-16 x 2" Hex Bolt
7	153004	8	3/8" Flat Washer
8	153005	2	3/8" Lock Washer
9	152005	2	3/8-16 Hex Nut
10	154326	2	5/16-24 x 3/8" Setscrew (black)
11	152004	4	5/16-18 Hex Nut
12	150621	2	5/16-18 x 1-1/2" Tap Bolt
13	153002	4	5/16" Lock Washer
14	150501	4	5/16-18 x 3/4" Tap Bolt
15	102120	1	Sintered 8 Magnet
16	824807	1	Rotational Sensor Assembly (for models mfd. with rotational sensor)
17	150610	2	5/16-18 x 1-1/2" Allen Setscrew



Illus. No.	Part No.	Qty.	Description
1	150006	2	#6-32 x 7/8" Round Head Machine Screw
2	802816	1	Lint Drawer (basket) Switch Assembly Complete (includes illus. nos. 1 through 4 and 7 through 9)
	307204	1	Lint Switch Mounting Bracket ONLY
3	136990	1	Lint Drawer (basket) Safety Switch ONLY
4	152013	2	#6-32 Hex Nut
5	122604	2	4-Pin Connector ONLY
6	122700	4	Pin Terminal ONLY
7	122605	2	4-Pin Socket Connector ONLY
8	122701	4	Socket Terminal ONLY
	122801	1	Pin/Socket Extraction Tool...Not Illustrated
9	824848	1	Lint Switch Bottom Harness (includes illus. nos. 7 through 9)
	824849	1	Lint Switch Top Harness (includes illus. nos. 7 through 9)
10	150309	2	#10-16 x 1/2" Hex Head TEK Crimpite Screw
11	150309	2	#10-16 x 1/2" Hex Head TEK Crimpite Screw
12	307203	1	Lint Switch Cover ONLY

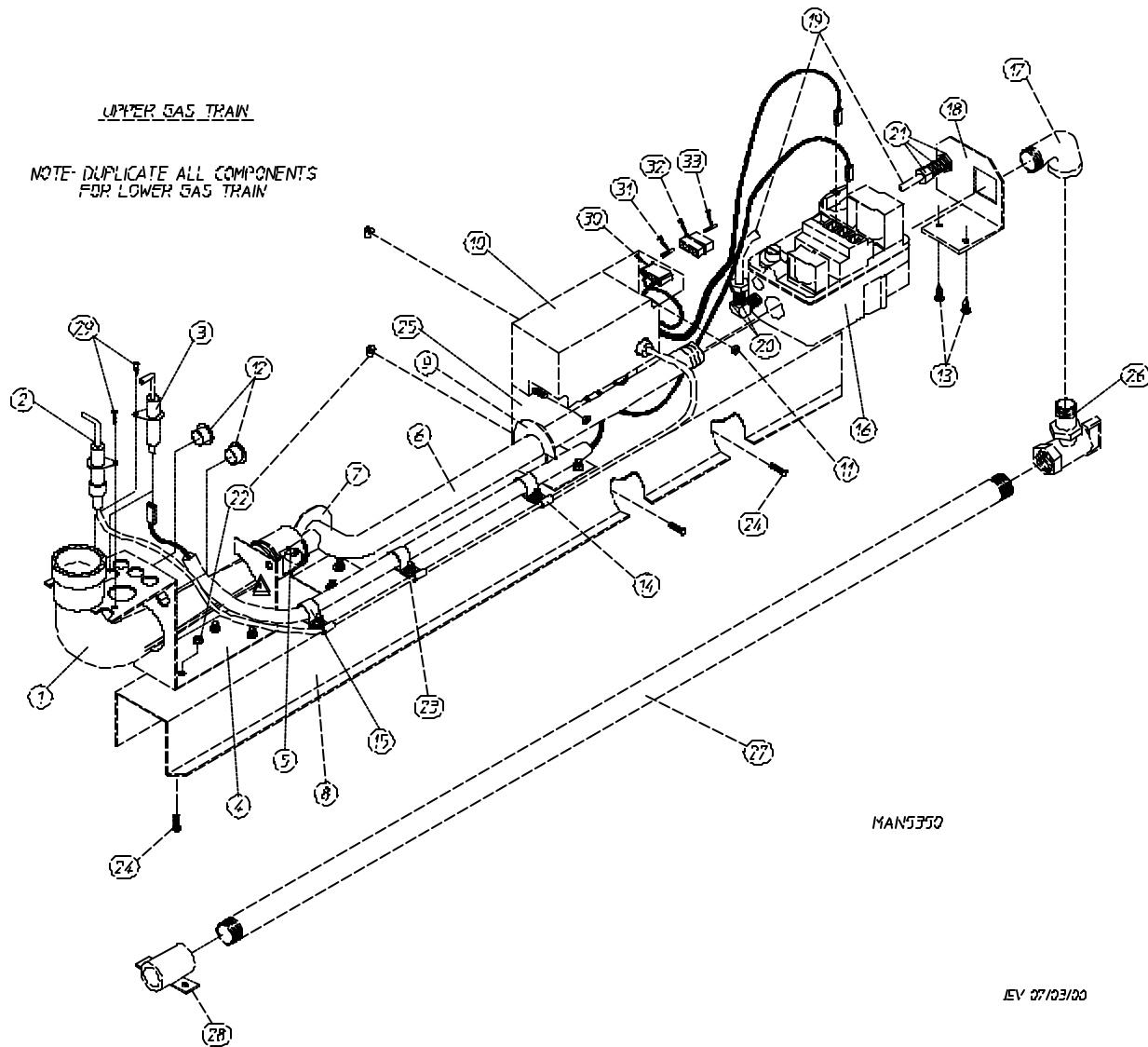


<u>Illus. No.</u>	<u>Part No.</u>	<u>Qty.</u>	<u>Description</u>
1	882910	1	Upper and Lower Idler Arm ONLY
	801019	1	Upper and Lower Idler Arm Assembly with Hardware (includes illus. nos. 1 through 10)
2	121350	1	13/32 x 3/8" I.D. Bronze
3	154277	1	5/16 x 3/8" Shoulder Bolt
4	100250	1	Back Side Idler Assembly
5	150600	1	3/8-16 x 1-1/2" Hex Head Machine Bolt
6	157010	1	1-7/8" Extension Spring
7	154276	1	1/4-20 x 5/8" Shoulder Bolt
8	154275	1	3/8-16 x 3-3/8" Spade Bolt
9	152005	2	3/8-16 Hex Nut
10	153005	1	3/8" Lock Washer
11	850135	1	Idler Angle
12	153001	2	5/16" Flat Washer
13	153002	2	5/16" Lock Washer
14	150501	2	5/16-18 x 3/4" Hex Head Machine Bolt
15	153001	2	5/16" Flat Washer
16	153002	2	5/16" Lock Washer
17	150501	2	5/16-18 x 3/4" Hex Head Machine Bolt
18	100064	1	1/3 HP 120/230v 1ø 60 Hz Totally Enclosed, Non-Vent (T.E.N.V.) Motor with Plug
19	101097	1	Rear Motor Shaft Bushing (for 60 Hz models)
20	154327	1	1/4-20 x 3/8" Socket Setscrew
21	101096	1	Front Motor Shaft Bushing (50/60 Hz)
22	153024	1	#10 Lock Washer
23	150216	1	#10-32 x 3/4" Left Hand Phillips Round Head Screw

*Totally Enclosed, Non-Vent (T.E.N.V.) Motor/Idler Assemblies (continued) 21*

---

<u>Illus. No.</u>	<u>Part No.</u>	<u>Qty.</u>	<u>Description</u>
24	154279	4	5/16-18 x 3/4" Carriage Bolt
25	800917	1	Motor Mount ONLY
	803918	1	1/3 HP 120/230v 1ø 60 Hz Totally Enclosed, Non-Vent (T.E.N.V.) Motor Mount Assembly Complete (includes illus. nos. 11 through 28 and 31)
26	153001	4	5/16" Flat Washer
27	153002	4	5/16" Lock Washer
28	152004	4	5/16-18 Hex Nut
29	137030	1	8-Pin Housing
30	122701	8	Socket Terminal ONLY
	122801	1	Pin/Socket Extraction Tool...Not Illustrated
31	116010	1	Felt Motor Seal ONLY
32	150501	4	5/16-18 x 3/4" Hex Head Machine Bolt
33	153002	4	5/16" Lock Washer
34	153001	4	5/16" Flat Washer
35	100173	1	12-Rib 95" Belt
36	117604	3	Neoprene Sponge Tape (sold by the foot)
37	153054	1	Motor Washer (for 50 Hz models)
38	100705	1	3/16" x 3/16" x 1-3/8" Key
39	802831	1	12-1/2" Impellor with 3/4" Bore (for 60 Hz models)
40	153051	1	3/4" Flat Washer (for 60 Hz models)
41	153040	1	3/4" Lock Washer (for 60 Hz models)
42	152025	1	3/4-16 Jam Nut (for 60 Hz models)
43	153525	2	1/4-20 x 1" Self-Clinching Stud
44	850132	1	Bearing Backup Plate (includes illus. nos. 43 and 44)
	852104	1	Bearing Backup Plate Assembly (includes illus. nos. 43, 44, and 46 through 48)
45	880885	1	Impellor Cover
46	116011	1	Bearing Felt Seal
47	153007	2	1/4" Lock Washer
48	152002	2	1/4-20 Hex Nut
49	880225	1	1/2" Flange Bearing
50	152014	4	1/4-20 Free Spin Wash Nut
51	314423	1	Belt Guard
52	154277	2	3/8" x 1/2" Screw



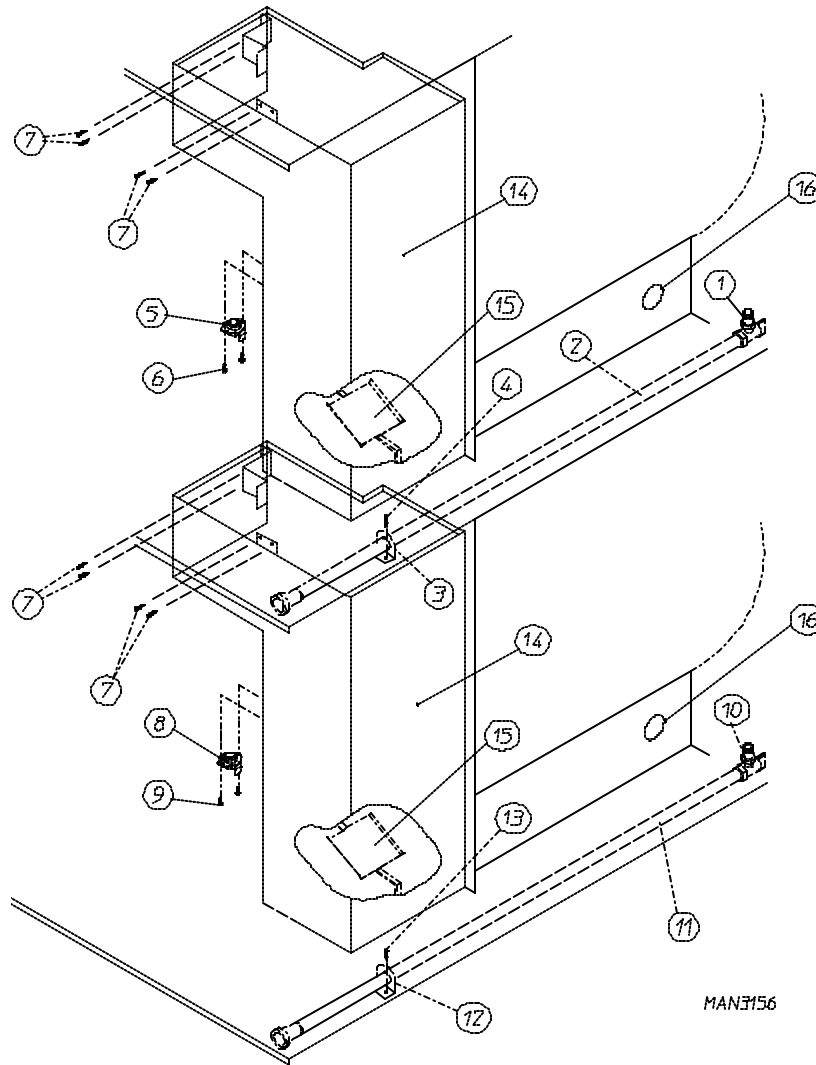
<u>Illus. No.</u>	<u>Part No.</u>	<u>Qty.</u>	<u>Description</u>
1	141130	1	Direct Spark Ignition (DSI) Up-Shot Burner Tube ONLY
2	128917	1	Spark Ignitor with 36" Wire
3	128918	1	Flame Sensor
4	318009	1	Burner Tube Bracket (PSE)
5	140856**	1	#23 Burner Orifice (natural gas) ONLY
	140810**	1	#42 Burner Orifice (liquid propane [L.P.] gas) ONLY
6	141225	1	Single-Port Manifold
7	318700	1	Pipe Bracket
8	882721*	1	Direct Spark Ignition (DSI) Natural Gas Train Assembly Complete (includes illus. nos. 1 through 4, 6 through 25, and 29 through 31)
	882722*	1	Direct Spark Ignition (DSI) Liquid Propane (L.P.) Gas Train Assembly Complete (includes illus. nos. 1 through 4, 6 through 25, and 29 through 31)
	319522	1	Gas Valve Train Slide ONLY



<u>Illus. No.</u>	<u>Part No.</u>	<u>Qty.</u>	<u>Description</u>
9	318711	1	Notched Pipe Bracket
10	128935	1	Direct Spark Ignition (DSI) Module ONLY (Johnson Controls)
11	152013	2	#6-32 Hex Nut
12	121300	2	Open/Closed Bushing
13	150301	2	#8-18 x 7/16" Phillips Pan Head TEK Screw
14	121491	3	5/8" White Nylon Clamp
15	121492	3	3/16" Plastic Clip
16	128927	1	1/2" 24 VAC Direct Spark Ignition (DSI) Redundant (natural gas) Valve
	880960	1	Direct Spark Ignition (DSI) Gas Valve (liquid propane [L.P.] gas) ONLY
17	142506	1	1/2" x 1/2" Street Elbow
18	318712	1	Pipe Bracket
19	882157	1	1/4" Aluminum (12" length)
20	143203	1	Aluminum Tubing Adapter
21	143259	1	Aluminum Tubing Compression Fitting
22	151001	8	#8-32 Pal Nut
23	152001	3	#8-32 x 3/8" Hex Nut
24	153528	9	#8-32 x 1/2" Self-Clinching Stud
25	815974	1	Direct Spark Ignition (DSI) Module Mounting Bracket (Johnson)
26	881367	1	1/2" Union Shut Off with Tail Piece
27	142805	1	1/2" x 34-1/2" Pipe
28	142934	1	1/2" Coupling with Mounting Tabs
29	150315	2	#6 x 3/8" Phillips Pan Head Type "B" Screw
30	122605	1	4-Pin Socket Connector ONLY
	122801	1	Pin/Socket Extraction Tool...Not Illustrated
31	122701	2	Socket Terminal ONLY
32	122604	1	4-Pin Connector ONLY
33	122700	2	Pin Terminal ONLY
--	883278**	1	Liquid Propane (L.P.) Conversion Kit

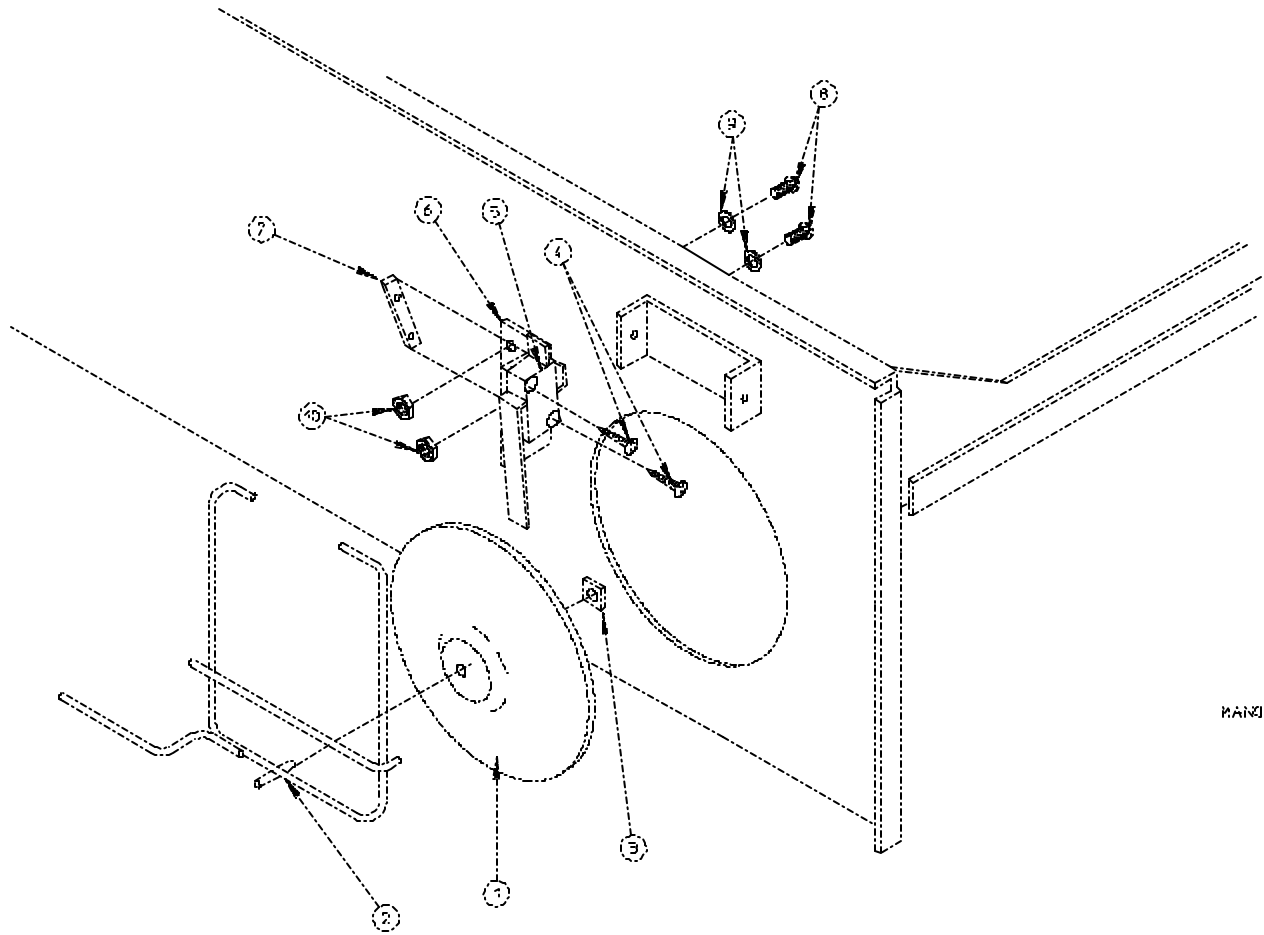
\* Orifice is not included and **must be** ordered separately.

\*\* Consult factory for elevations over 2,000 feet.



<u>Illus. No.</u>	<u>Part No.</u>	<u>Qty.</u>	<u>Description</u>
1	881367	1	1/2" Union Shut Off with Tail Piece
2	142805	1	1/2" x 34-1/2" Pipe
	142809	1	1/2" x 29-1/8" Pipe
3	318700	1	Pipe Bracket
4	150300	2	#10-16 x 1/2" Hex Washer TEK Screw
5	130403	1	330° Burner Hi-Limit Thermostat
6	150300	2	#10-16 x 1/2" Hex Washer TEK Screw
7	150309	8	#10-16 x 1/2" Hex Head TEK Crimptite Screw
8	130403	1	330° Burner Hi-Limit Thermostat
9	150300	2	#10-16 x 1/2" Hex Washer TEK Screw
10	881367	1	1/2" Union Shut Off with Tail Piece
11	142805	1	1/2" x 34-1/2" Pipe
12	318700	1	Pipe Bracket
13	150300	2	#10-16 x 1/2" Hex Washer TEK Screw
14	850854	2	Burner Box without Flame Spreader
15	850912	2	Flame Spreader
16	-----	-	Sail Switch
			(refer to <b>Sail Switch Assembly</b> on <b>page 25</b> )

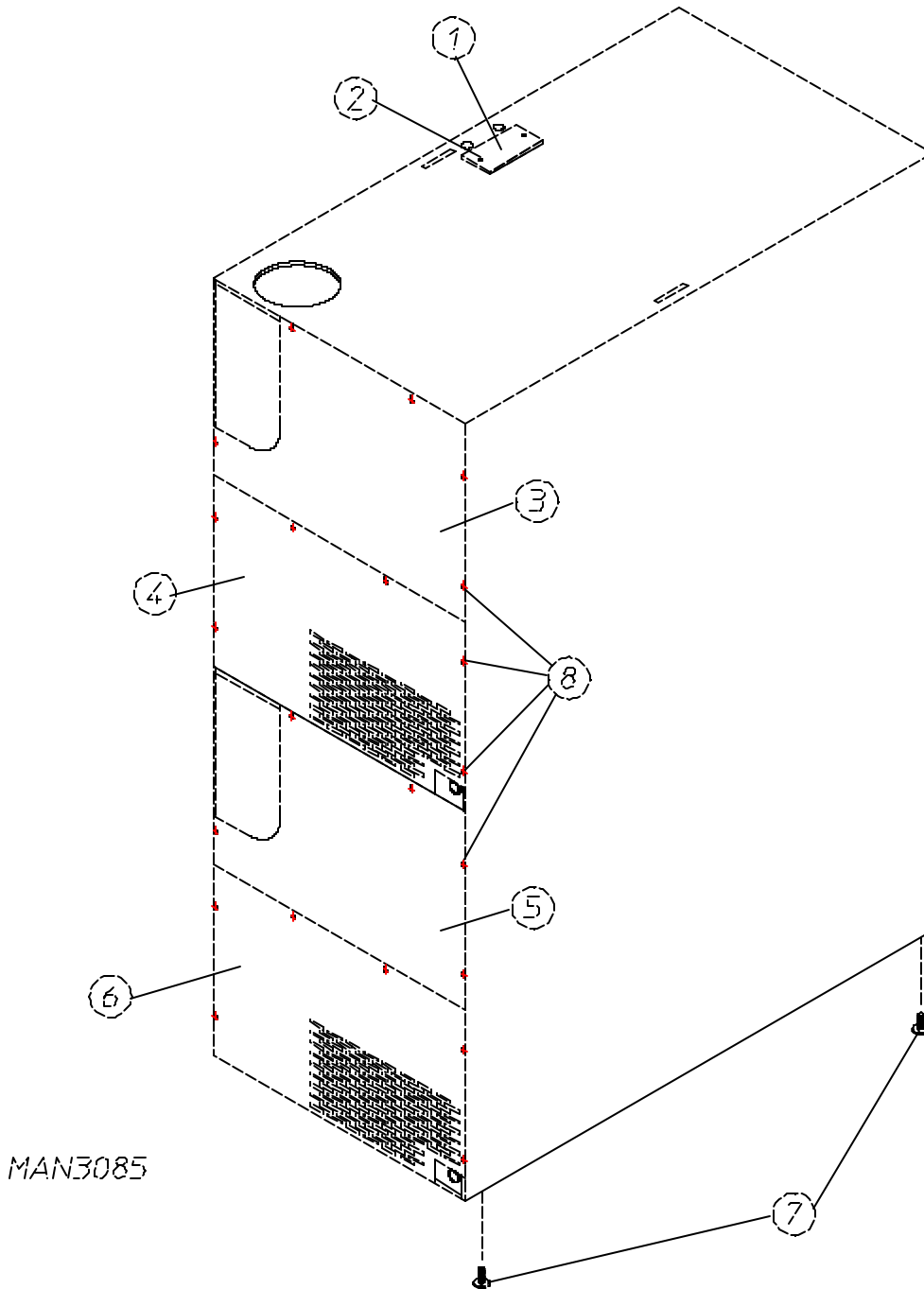
UPPER SAIL SWITCH ASSEMBLY



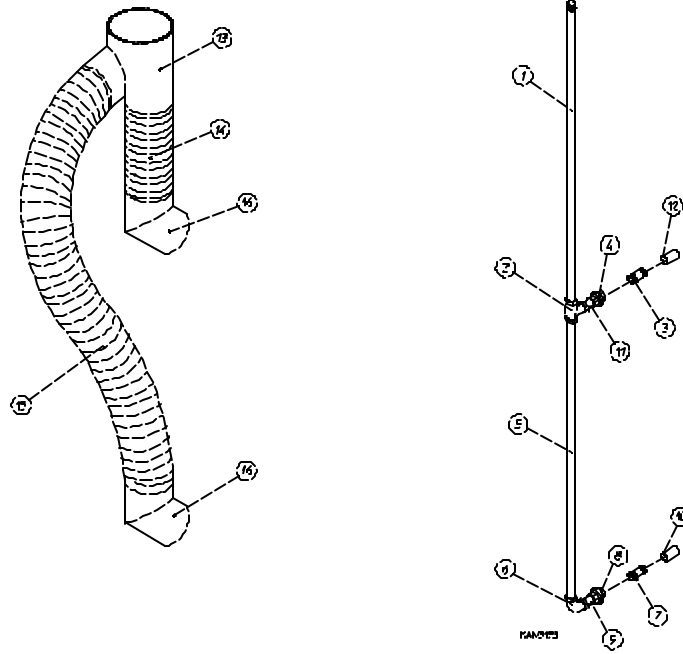
KAN557D

NOTE. DUPLICATE ALL COMPONENTS  
FOR LOWER SAIL SWITCH ASSEMBLY

<u>Illus. No.</u>	<u>Part No.</u>	<u>Qty.</u>	<u>Description</u>
1	319206	1	Sail Switch Damper (embossed)
	802805	1	Sail Switch Rod and Damper Assembly (includes illus. nos. 1, 2, and 3)
2	105550	1	Sail Switch Rod
3	154002	1	1/8" Push On Fastener
4	150303	2	#4 x 3/4" Pan Head "A" Machine Screw
5	122200	1	Sail Switch ONLY
	802807	1	Sail Switch Bracket Assembly (includes illus. nos. 4 through 7)
6	319208	1	Sail Switch Bracket
7	154004	1	Twin Speed Nut
8	150001	2	#6-32 x 1/2" Round Head Machine Screw
9	153010	2	#6 Star Washer
10	152000	2	#6-32 Hex Nut



<u>Illus. No.</u>	<u>Part No.</u>	<u>Qty.</u>	<u>Description</u>
1	315014	1	Top Electric Box Cover Plate
2	150309	2	#10-16 x 1/2" Hex Head TEK Crimpite Screw
3	314404	1	Top Upper Guard
4	314405	1	Top Lower Guard
5	314404	1	Bottom Upper Guard
6	314405	1	Bottom Lower Guard
7	103500	4	Adjustable Leveling Leg
8	150309	22	#10-16 x 1/2" Hex Head TEK Crimpite Screw



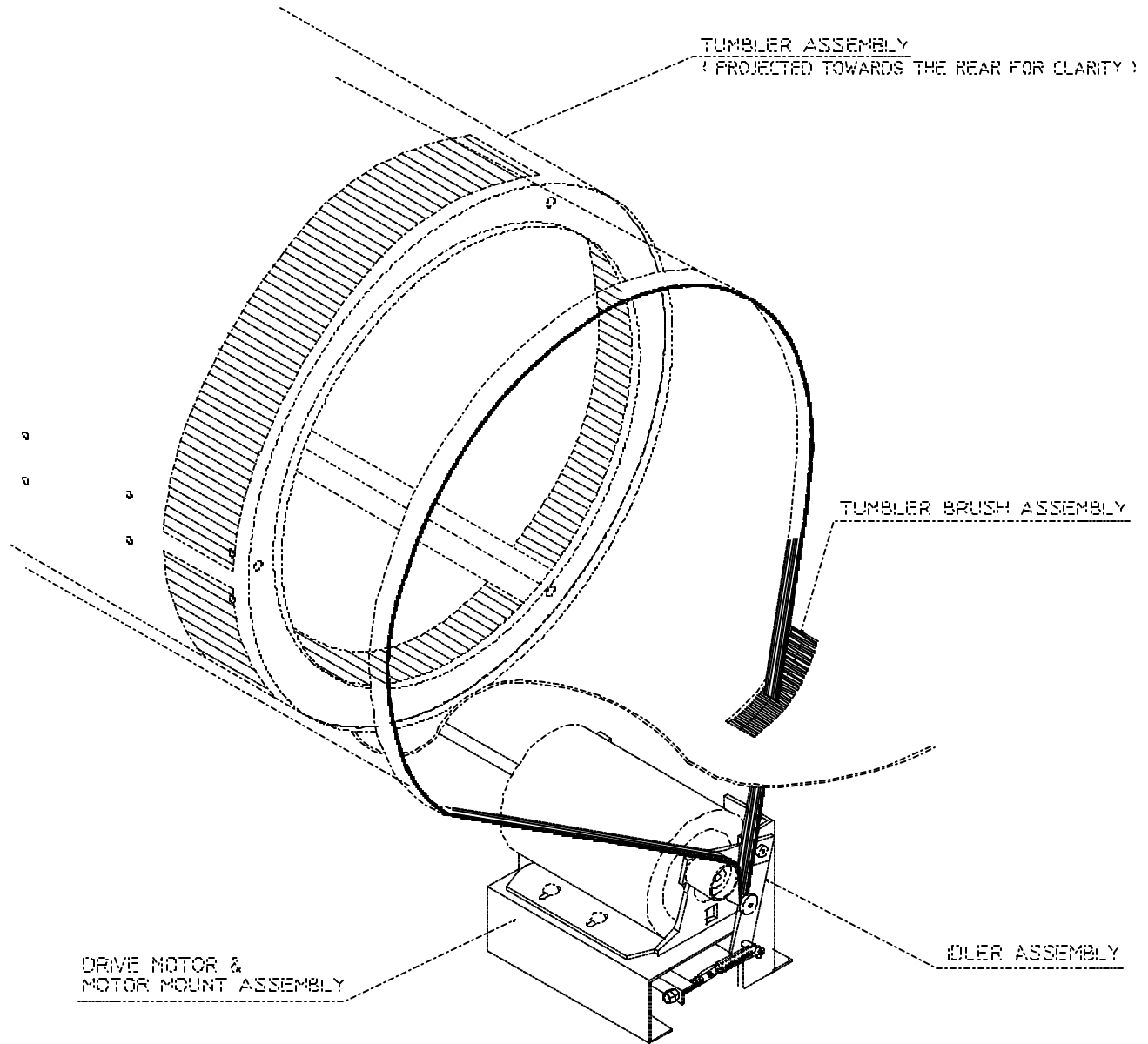
Optional Gas Piping Kit

<u>Illus. No.</u>	<u>Part No.</u>	<u>Qty.</u>	<u>Description</u>
---	880128	1	Gas Piping Kit (includes illus. nos. 1 through 12)
1	142821	1	3/4" x 36" Pipe
2	142505	1	3/4" x 1/2" x 1/2" Tee
3	142814	1	1/2" x 2-1/2" Nipple
4	142600	1	1/2" Union
5	142824	1	1/2" x 37-1/4" Pipe
6	142500	1	1/2" x 90° Elbow
7	142814	1	1/2" x 2-1/2" Nipple
8	142600	1	1/2" Union
9	142700	1	1/2" Close Nipple
10	143001	1	1/2" Coupling
11	142700	1	1/2" Close Nipple
12	143001	1	1/2" Coupling

Optional Exhaust Ducting Kit

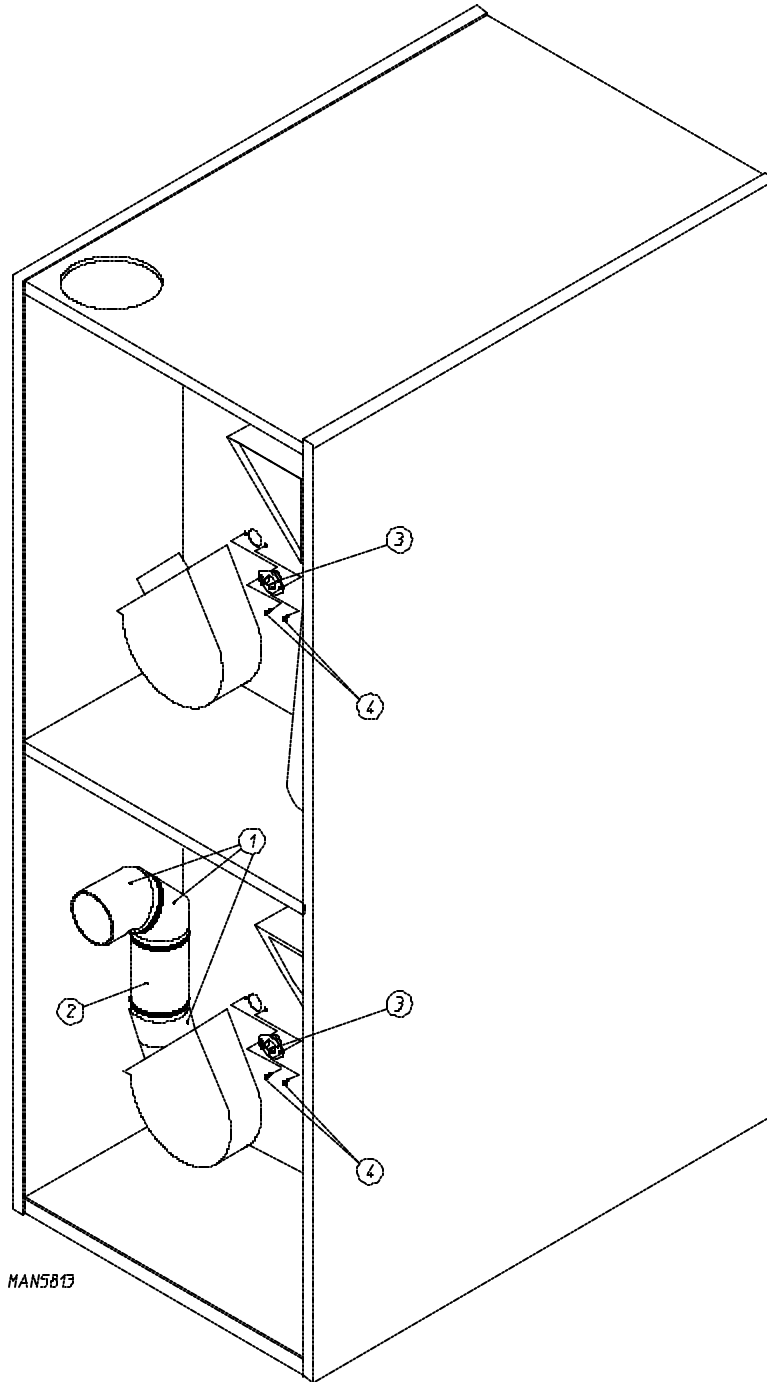
---	882035	1	/ Exhaust Ducting Kit (includes illus. nos. 13 through 16)
13	143600	1	10" x 6" x 6" Wye Branch Duct
14	143519	1	6" Round x 4' Long Flexible Exhaust Duct
15	143509	1	6" Round x 8' Long Flexible Exhaust Duct
16	143536	2	6" Round x 45° Elbow
---	150300*	12	#10-16 x 1/2" Hex Washer TEK Screw
---	117505*	12	Aluminum Duct Tape (sold by the foot)

\* Included with Exhaust Ducting Kit (ADC Part No. 882035).



MAN0433

12-RIB 95" (J) POLY BELT ARRANGEMENT



<u>Illus. No.</u>	<u>Part No.</u>	<u>Qty.</u>	<u>Description</u>
1	143536	2	6" Round x 45° Elbow
2	143545	1	6" Round x 6" Long Duct
-	117505*	5	Aluminum Duct Tape (sold by the foot)
3	130107	2	Cabinet Hi-Limit 160°
4	150301	4	#8-18 x 7/16" Phillips Pan Head Screw

\* Tape **ALL** joints.

<u>Part No.</u>	<u>Description</u>
100405	Bearing Puller (for fan [impellor] shaft bearing)
112039	“Black/White/Green Ground” Label
112119	Phase 5 Dual Microprocessor Controller (DMC) User’s Manual
112530	“Program Location Summary” Coin Label
114001	“CAUTION - Exhaust/Lint Screen” Label
114006	“WARNING - Fire Hazards” Label
120802	Red Butt Connector
120903	#74B Wire Nut
121014	Crimp-On Wire Nut
121499	5-1/2” Harness Tie
121500	8” Harness Tie
121503	Harness Tie Mounting Clip
112804	Manometer (hydro gauge) for Measuring Gas Pressure
112280	“Lint Compartment” Label
404516	Bisque Brush-In-Cap Bottle Touch-Up Paint
410001	1/2” Allen Wrench (for gas valve tail piece removal)
450426	Johnson Controls Direct Spark Ignition (DSI) Technical Manual
880884	Basket (tumbler) Puller Assembly
881299	Loctite Adhesive Kit (for setscrews)



