



Maytag
MLG31PCB
Parts Manual

For Internal Use Only

**RETAIN THESE INSTRUCTIONS IN A SAFE PLACE
FOR FUTURE REFERENCE**

Whirlpool Corporation
Commercial Laundry
Benton Harbor, MI 49022
1-800-662-3587

Retain This Manual In A Safe Place For Future Reference

This product embodies advanced concepts in engineering, design, and safety. If this product is properly maintained, it will provide many years of safe, efficient, and trouble free operation.

ONLY qualified technicians should service this equipment.

OBSERVE ALL SAFETY PRECAUTIONS displayed on the equipment or specified in the installation manual included with the dryer.

The following “**FOR YOUR SAFETY**” caution must be posted near the dryer in a prominent location.

FOR YOUR SAFETY

Do not store or use gasoline or other flammable vapors and liquids in the vicinity of this or any other appliance.

POUR VOTRE SÉCURITÉ

Ne pas entreposer ni utiliser d'essence ni d'autres vapeurs ou liquides inflammables à proximité de cet appareil ou de tout autre appareil.

We have tried to make this manual as complete as possible and hope you will find it useful. The manufacturer reserves the right to make changes from time to time, without notice or obligation, in prices, specifications, colors, and material, and to change or discontinue models.

Important

For your convenience, log the following information:

DATE OF PURCHASE _____ MODEL NO. **MLG31PCB**

DISTRIBUTOR'S NAME _____

Serial Number(s) _____

For replacement parts, contact the distributor from which the dryer was purchased or contact:

Whirlpool Corporation
Commercial Laundry
Benton Harbor, MI 49022
1-800-662-3587

The illustrations on the following pages may not depict your particular dryer exactly. The illustrations are a composite of the various dryer models. Be sure to check the descriptions of the parts thoroughly before ordering.

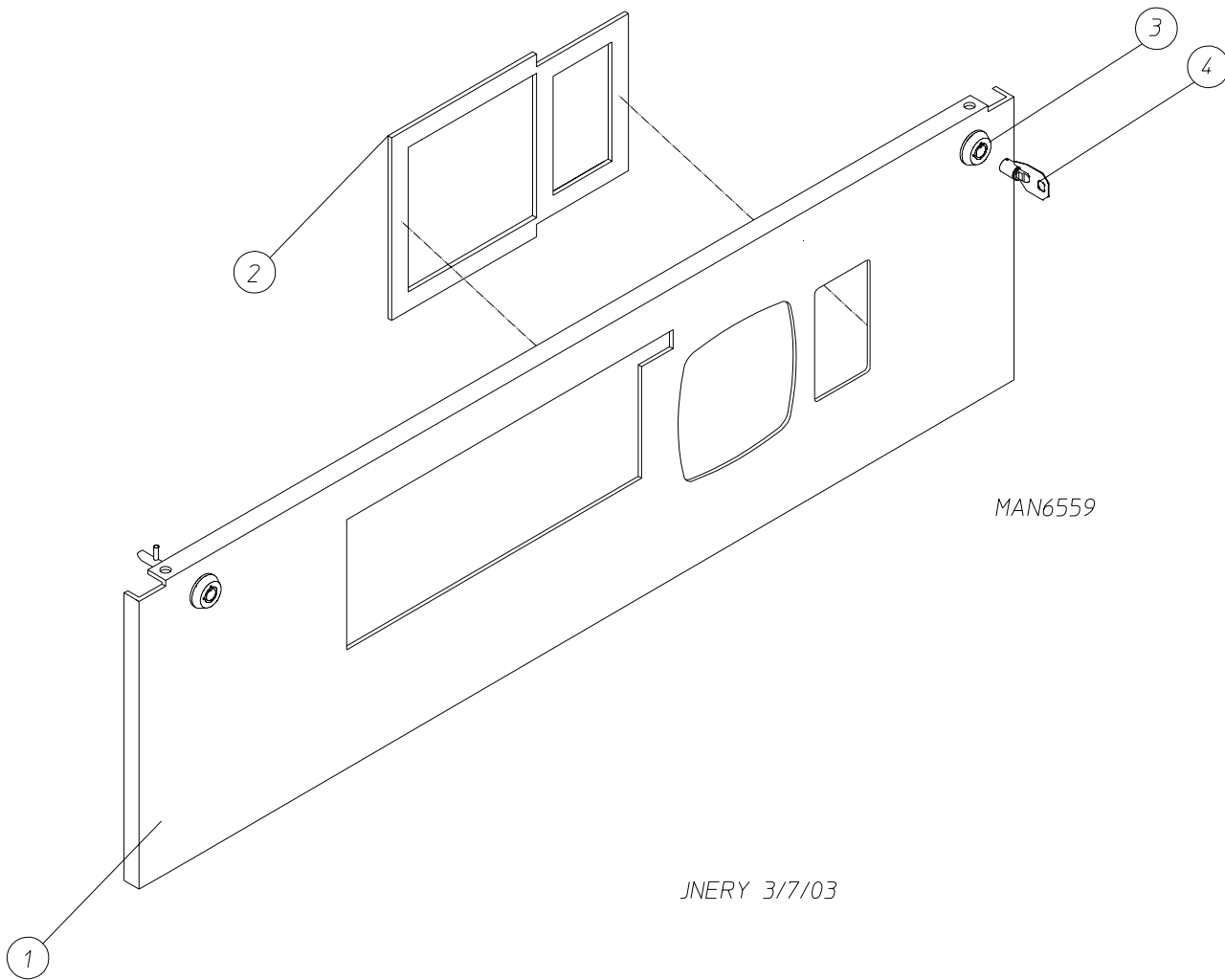
“IMPORTANT NOTE TO PURCHASER”

Information must be obtained from your local gas supplier on the instructions to be followed if the user smells gas. These instructions must be posted in a prominent location near the dryer.

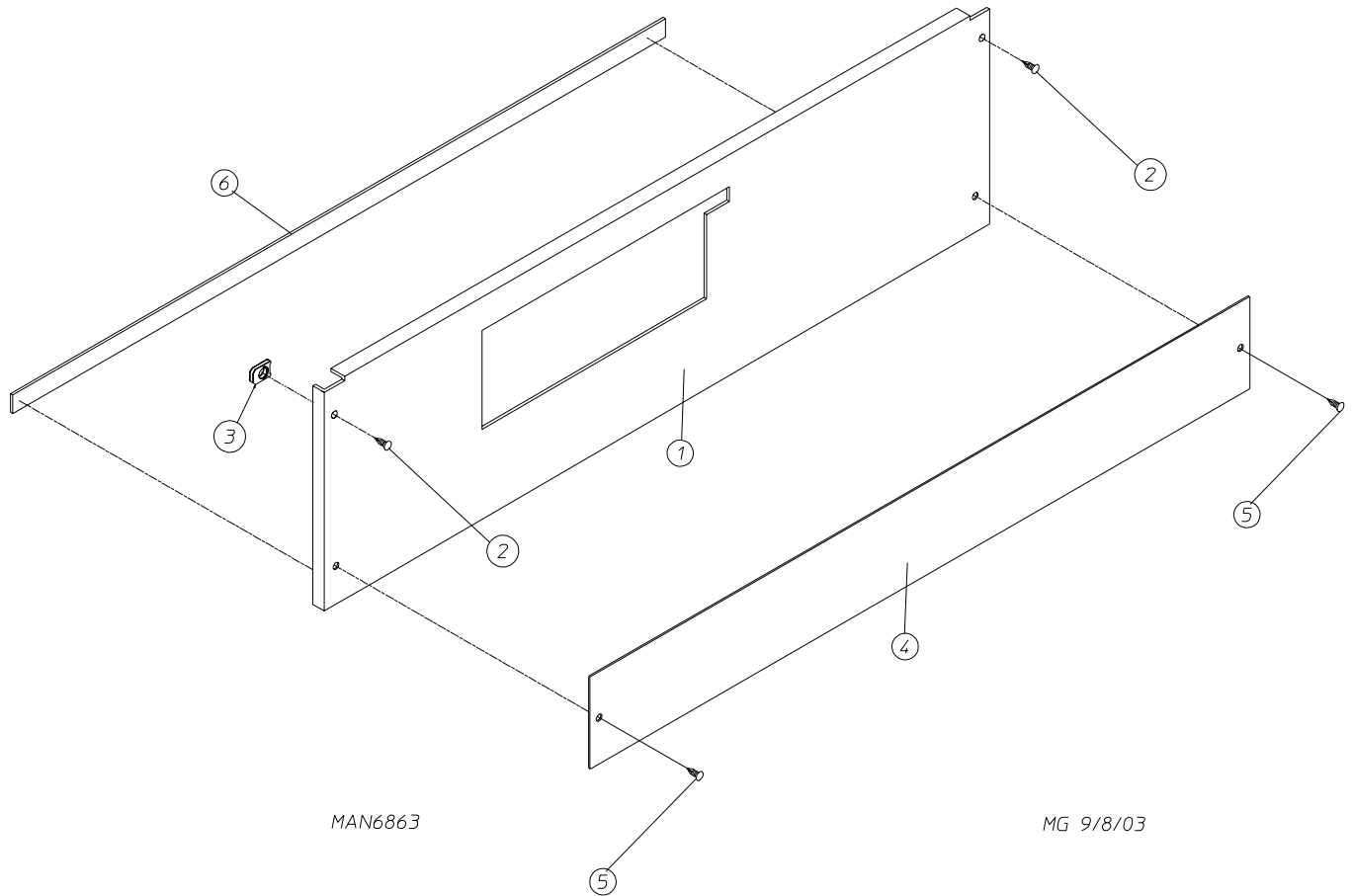
Table of Contents

Coin Control Door Assembly	4
Lint Door Assembly	5
Lint Drawer (Basket) Assembly	6
Single Hanke Coin, DMC Control Panel Assembly For Domestic Single Coin (25¢) Models	7
Coin Vault Assembly	8
DMC Control Box Assembly	10
Upper Front Panel Assembly	12
Lower Front Panel Assembly	13
Main Door Switch Assembly	14
Main Door Assembly	15
Tumbler / Support Assemblies	16
Tumbler Brush Assembly	18
Temperature Sensor Probe Assembly	19
Tumbler Bearing Assembly	20
Lint Drawer (Basket) Switch Assembly	21
Totally Enclosed, Non-Vent Motor / Idler Assemblies	22
Gas Train Assembly For Models Mfd. as of June 26, 2009	24
Gas Train Assembly For Models Mfd. Prior to June 26, 2009	26
Burner Box / Piping Assemblies	28
Sail Switch Assembly	29
Back Guard Assemblies	30
Optional Gas Piping and Exhaust Ducting Kits	31
12-Rib 95" (J) Poly Belt Arrangement	32
Bottom Exhaust Duct Assembly and Axial Temperature Sensor Probe Assembly	33
Additional Parts Available	34

Coin Control Door Assembly



<u>Illus. No.</u>	<u>Part No.</u>	<u>Qty.</u>	<u>Description</u>
1	883768	1	White Coin Control Door Assembly Less Locks (includes illus. nos. 1 and 2)
	883769	1	Ivory Coin Control Door Assembly Less Locks (includes illus. nos. 1 and 2)
	883770	1	Coral Blue Coin Control Door Assembly Less Locks (includes illus. nos. 1 and 2)
	883771	1	Stainless Steel Coin Control Door Assembly Less Locks (includes illus. nos. 1 and 2)
2	117603	2	Neoprene Gasket Tape (sold by the foot)
3	160040	2	Ace® Lock Assembly (no key)
4	160140	-	Key ONLY (key number XX4451)

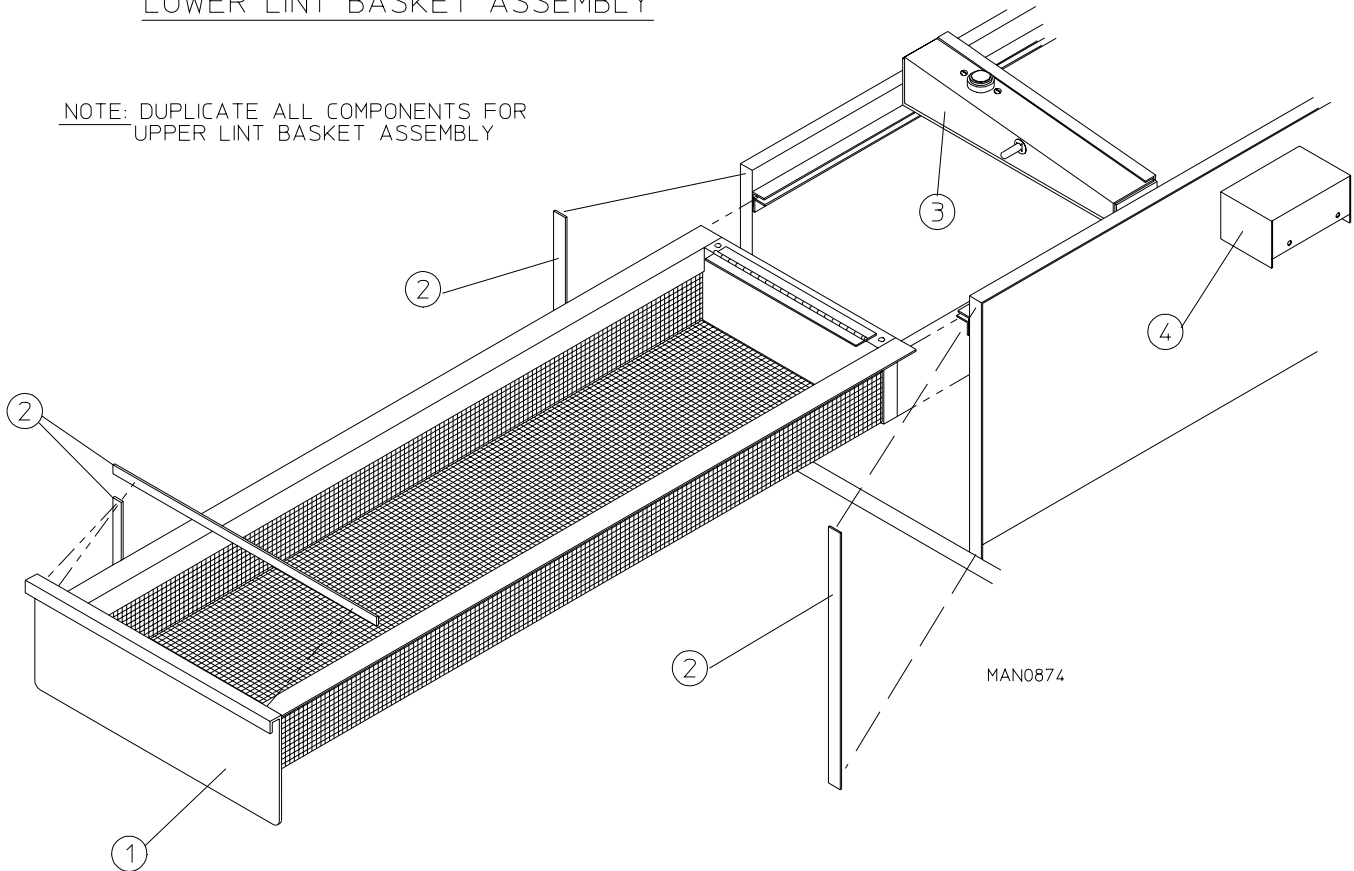


<u>Illus. No.</u>	<u>Part No.</u>	<u>Qty.</u>	<u>Description</u>
1	883981	1	White Lint Door Assembly Complete Less Locks (includes illus. nos. 1, 4, and 6)
	883980	1	Bisque Lint Door Assembly Complete (includes illus. nos. 1, 4, and 6)
2	150314	2	#10-32 x 1/2" TORX Screw
	400505	-	TORX Bit for above
3	154011	2	#10-32 Multi-Thread U-Nut
4	883369	1	Black Trim
5	150319	2	#10-32 x 1/2" TORX Black Screw
6	117604	3	Neoprene Sponge Tape (sold by the foot)

Lint Drawer (Basket) Assembly

LOWER LINT BASKET ASSEMBLY

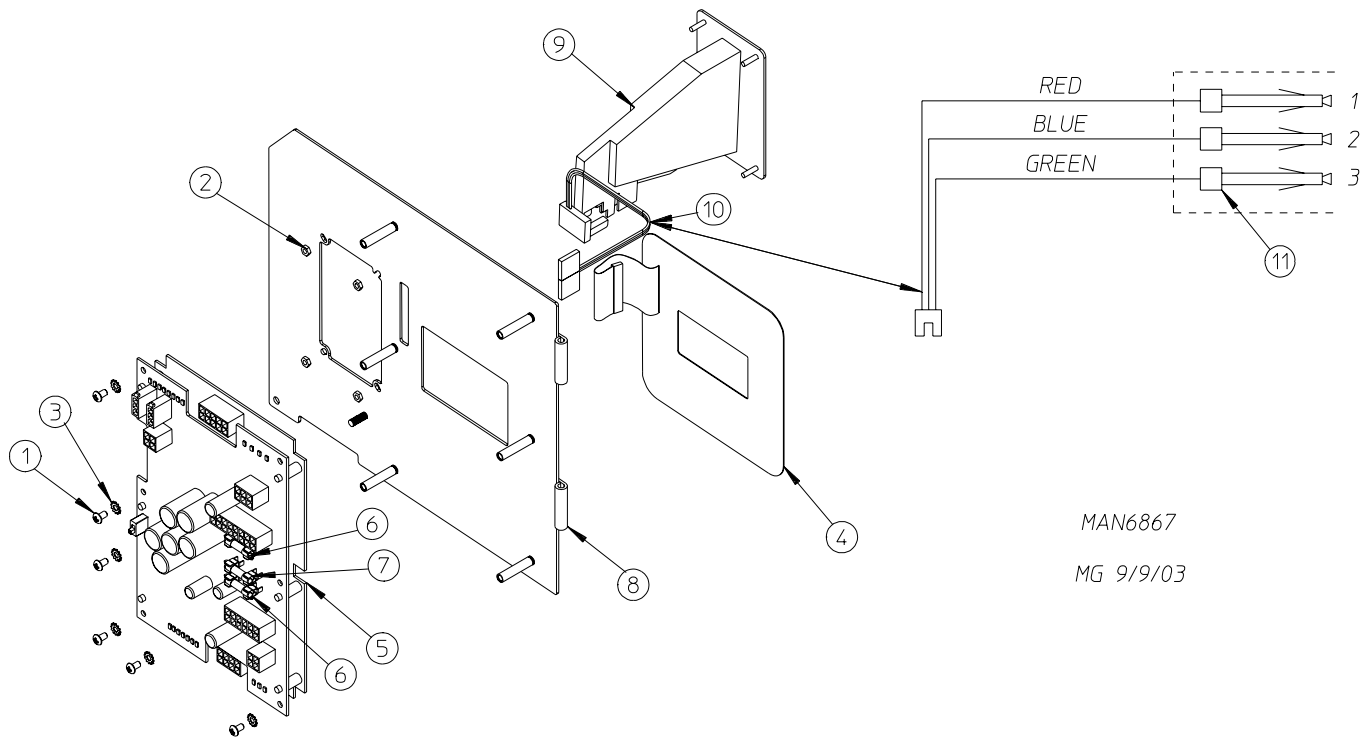
NOTE: DUPLICATE ALL COMPONENTS FOR UPPER LINT BASKET ASSEMBLY



Illus. No.	Part No.	Qty.	Description
1	883984	1	White Lint Drawer (basket) Assembly Complete (includes illus. nos. 1 and 2)
	883983	1	Bisque Lint Drawer (basket) Assembly Complete (includes illus. nos. 1 and 2)
	883982	1	Black Lint Drawer (basket) Assembly Complete (includes illus. nos. 1 and 2)
2	117604	3	Neoprene Sponge Tape (sold by the foot)
3	_____	1	Temperature Sensor Bracket (refer to Temperature Sensor Probe Assembly on page 19)
4	_____	1	Lint Drawer (basket) Switch (refer to Lint Drawer [Basket] Switch Assembly on page 21)

Single Hanke Coin, DMC Control Panel Assembly

For Domestic Single Coin (25¢) Models

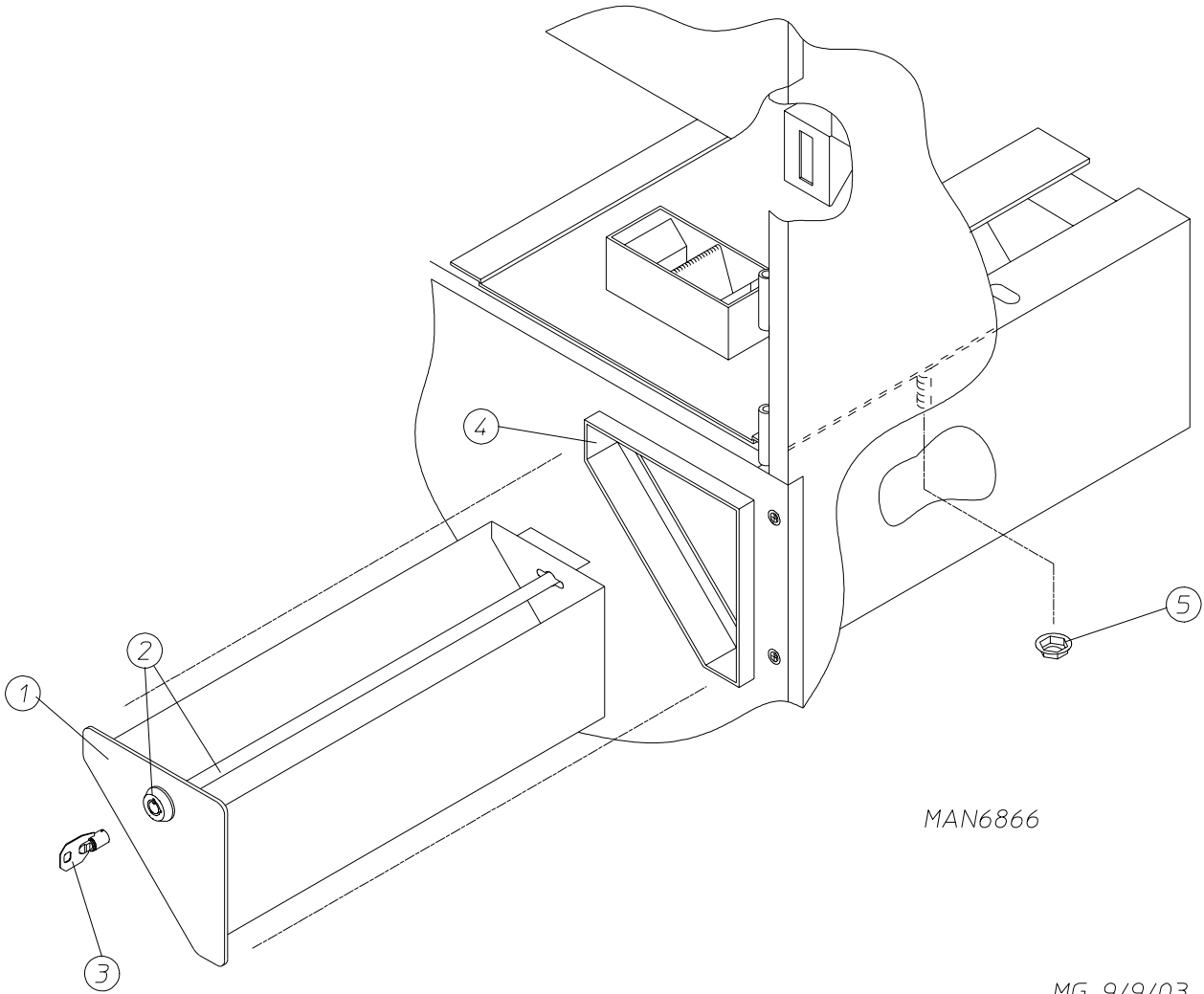


MAN6867

MG 9/9/03

Illus. No.	Part No.	Qty.	Description
1	150005	6	#6-32 x 1/4" Phillips Round Head Machine Screw
2	152102	4	M3 Metric Hex Nut
3	153010	6	#6 Internal and External Star Washer
4	112583	1	Phase 7 Coin DMC Keypad
5	137260	1	Phase 7 Dual Coin Board
6	136111	2	5-Amp (Slo-Blo) Fuse
7	136115	1	3/4-Amp (Slo-Blo) Fuse
8	853169	1	Phase 7 Coin Meter Panel
9	852317	-	Coin Acceptor with Optic Switch (includes illus. nos. 9 and 10)
10	883774	1	Hanke Optical Switch Assembly with Connector (includes illus. nos. 10 and 11)
11	122691	3	Female Terminal
	122633	1	3-Pin Cap

Coin Vault Assembly



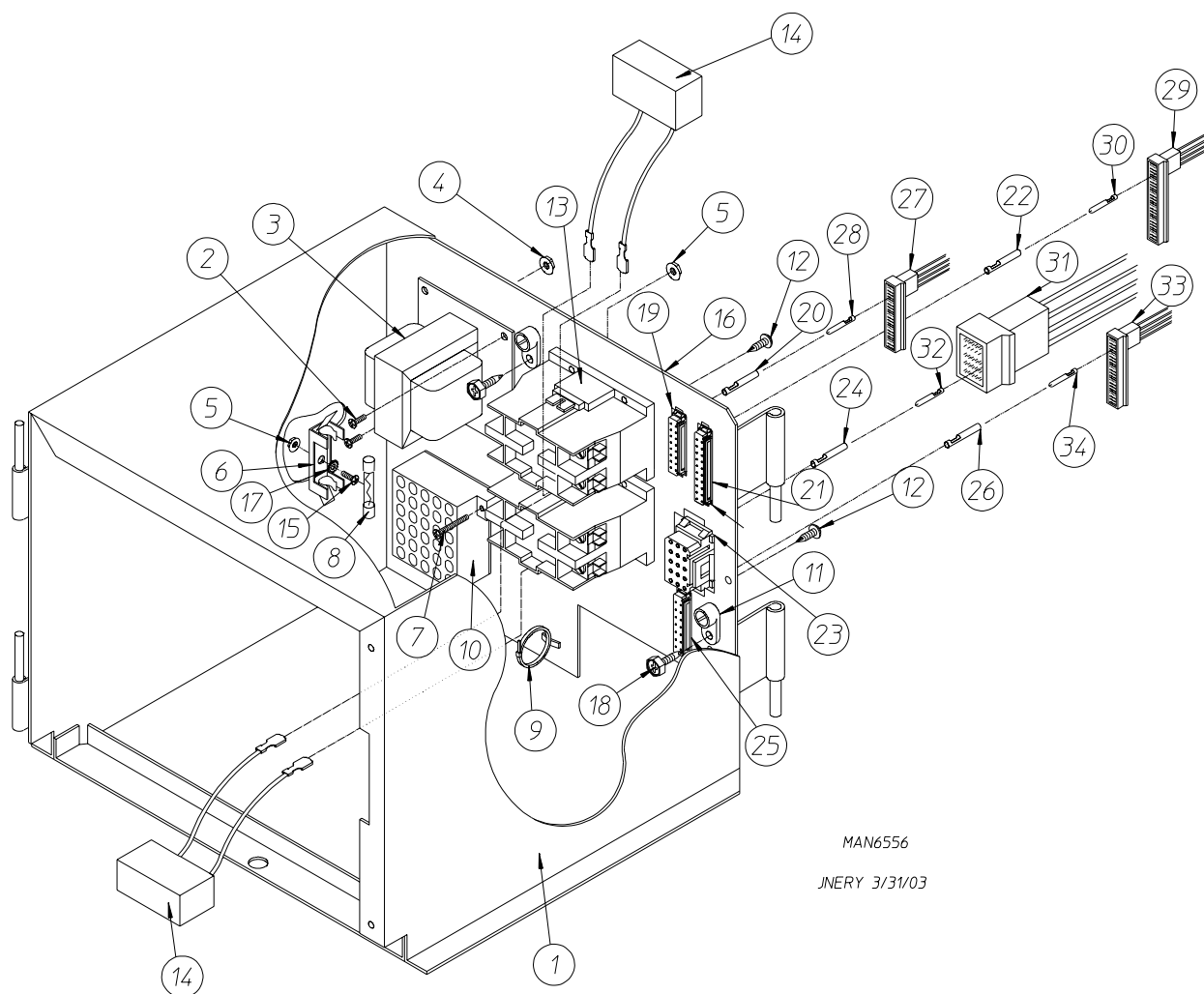
MAN6866

MG 9/9/03

<u>Illus. No.</u>	<u>Part No.</u>	<u>Qty.</u>	<u>Description</u>
1	883347	1	Coin Box Assembly with Black Faceplate Less Lock
	883348	1	Black Coin Box Faceplate ONLY
	883393	1	Black Debit Card / OPL Faceplate
2*	160036	1	ACE® Lock Assembly with Key
3*	160136	1	ACE® Key ONLY
4	883382	1	Coin Vault Assembly ONLY
5	152014	4	1/4-20 Free Spin Wash Nut

* Specify key number when ordering.

DMC Control Box Assembly



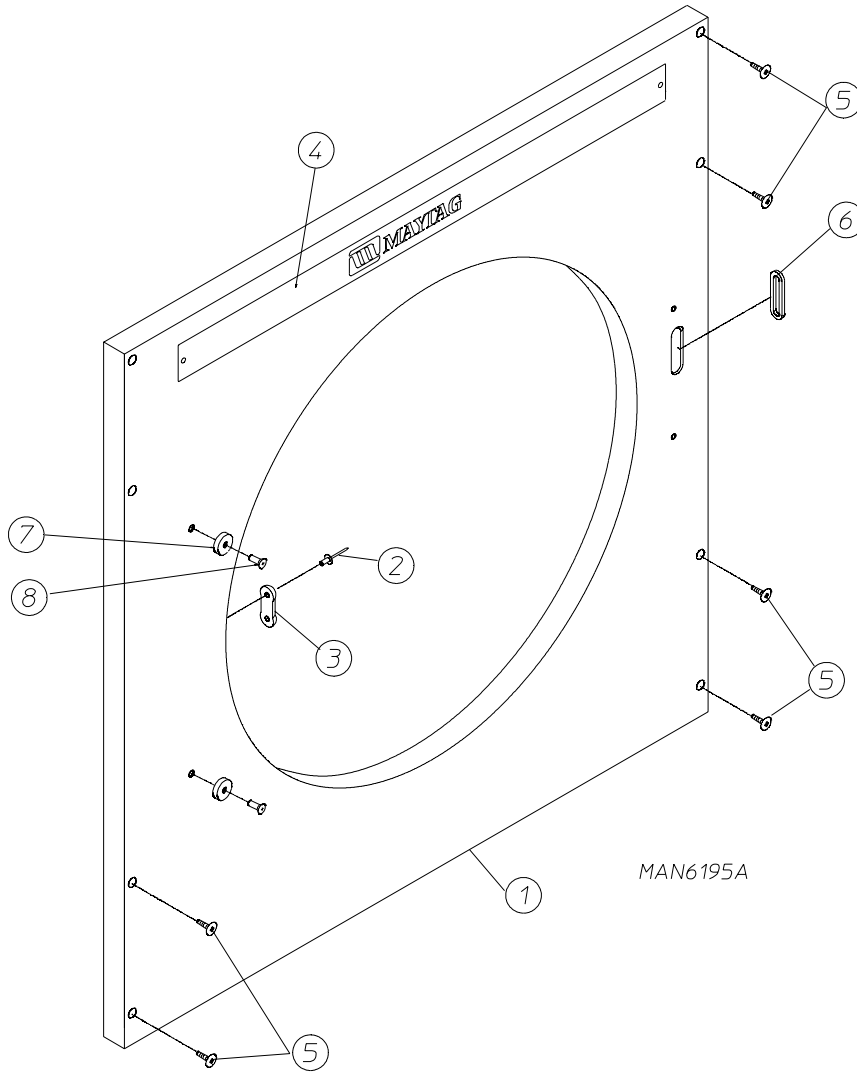
MAN6556

JNERY 3/31/03

Illus. No.	Part No.	Qty.	Description
1	852326	1	Control Box Assembly Complete (for illus. nos. 1 through 26)
	850911	1	Electric Box ONLY
2	150108	2	#8-32 x 1/2" Phillips Pan Head Machine Screw
3	852333	1	Transformer – 24 vac Assembly (for 120V 60 Hz models Only)
	852335	1	Transformer – 24 vac (for 208-240V 60 Hz models Only)
4	151001	2	#8-32 Pal Nut
5	151000	3	#6-32 Pal Nut
6	136008	1	Fuse Block
7	150002	2	#6-32 x 1" Round Head Machine Screw
8	136049	1	3/4-Amp (Slo-Blo) Fuse (for 120V 60 Hz models Only)
	136057	1	1/2-Amp (Slo-Blo) Fuse (for 208-240V 60 Hz models Only)

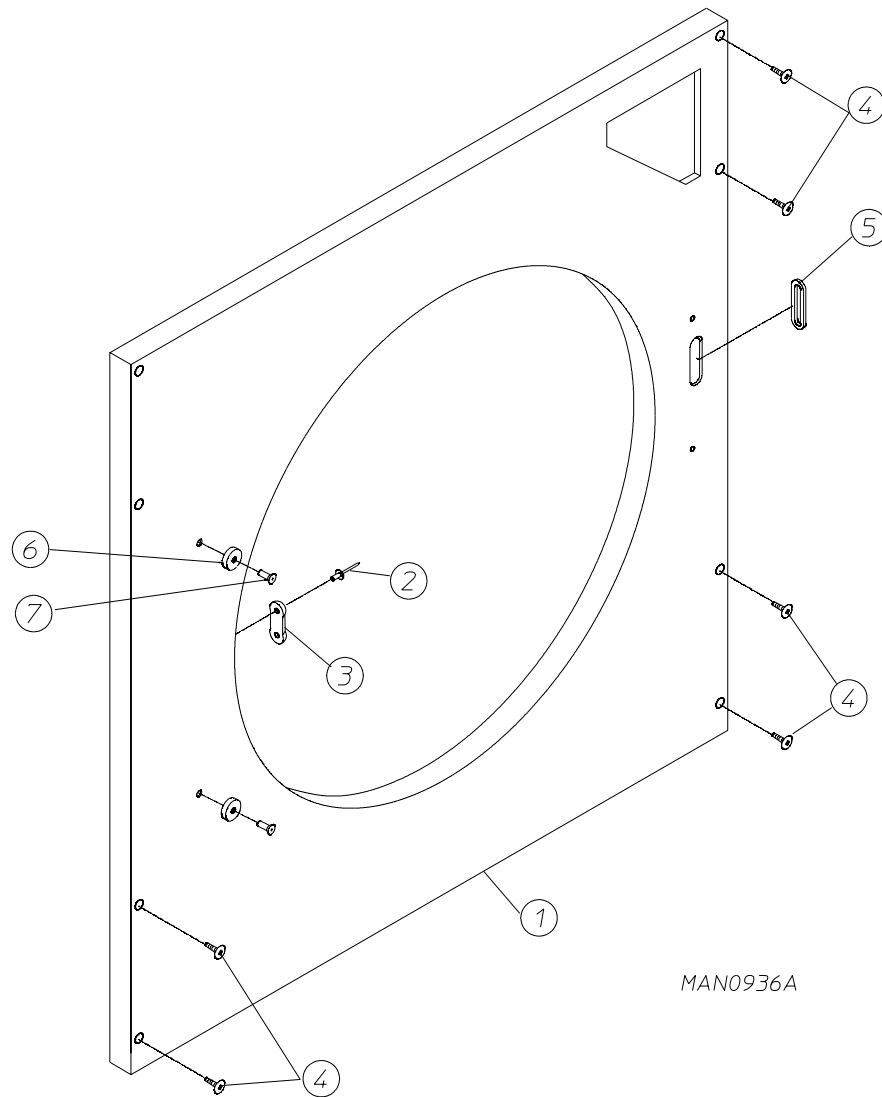
<u>Illus. No.</u>	<u>Part No.</u>	<u>Qty.</u>	<u>Description</u>
9	121494	10	Push Mount Wire Tie
10	120715	1	30-Position Terminal Block
11	121010	2	L-70 Terminal Lug
12	150309	2	#10-16 x 1/2" Hex Head TEK Crimptite Screw
13	132475	2	2-Pole Contactor
14	824828	2	R.C. Network with Connectors
15	150001	1	#6-32 x 1/2" Phillips Round Head Machine Screw
16	315023	1	E-Box Back Phase 7 Coin
17	153010	1	#6 Interior and Exterior Star Washer
18	120910	2	#10-32 Green Ground Screw Type F
19	122689	1	16-Pin Connector
20	182363	16	Male Crimp Pin (for illus. no. 19)
21	122687	1	20-Pin Connector
22	182363	20	Male Crimp Pin (for illus. no. 21)
23	122626	1	15-Pin Connector
24	122705	15	Female Crimp Socket (for illus. no. 23)
25	122685	1	14-Pin Connector
26	182363	14	Male Crimp Pin (for illus. no. 25)
27	122667	1	16-Pin Connector
28	122669	16	Female Crimp Socket (for illus. no. 27)
29	122668	1	20-Pin Connector
30	122669	20	Female Crimp Socket (for illus. no. 29)
31	122625	1	15-Pin Connector
32	122704	15	Male Crimp Pin (for illus. no. 31)
33	122686	1	14-Pin Connector
34	122669	14	Female Crimp Socket (for illus. no. 33)
	122672	1	Pin / Socket Extraction Tool ... Not Illustrated

Upper Front Panel Assembly



Illus. No.	Part No.	Qty.	Description
1	825632*	1	Front Panel with Magnetic Door Latch (includes illus. nos. 1 and 6 through 8)
	883373	1	White Front Panel with Mechanical Door Latch (includes illus. nos. 1 through 3 and 6)
	883374	1	Bisque Front Panel with Mechanical Door Latch (includes illus. nos. 1 through 3 and 6)
	883370	1	Stainless Steel Front Panel with Mechanical Door Latch (includes illus. nos. 1 through 3 and 6)
2	154215	2	1/8" Pop Rivet
3	881987	1	Friction Door Latch Kit (includes illus. nos. 2 and 3)
4	801095	1	Maytag Logo with Black Trim
5	150313	8	#10-16 x 1/2" TORX® Type I Screw
	400505	1	TORX® Bit for removing above
6	121405	1	Rubber Grommet
7	102004	2	3/4" Door Magnet
8	152223	2	#10-32 x 1/2" T-20 TORX® Screw

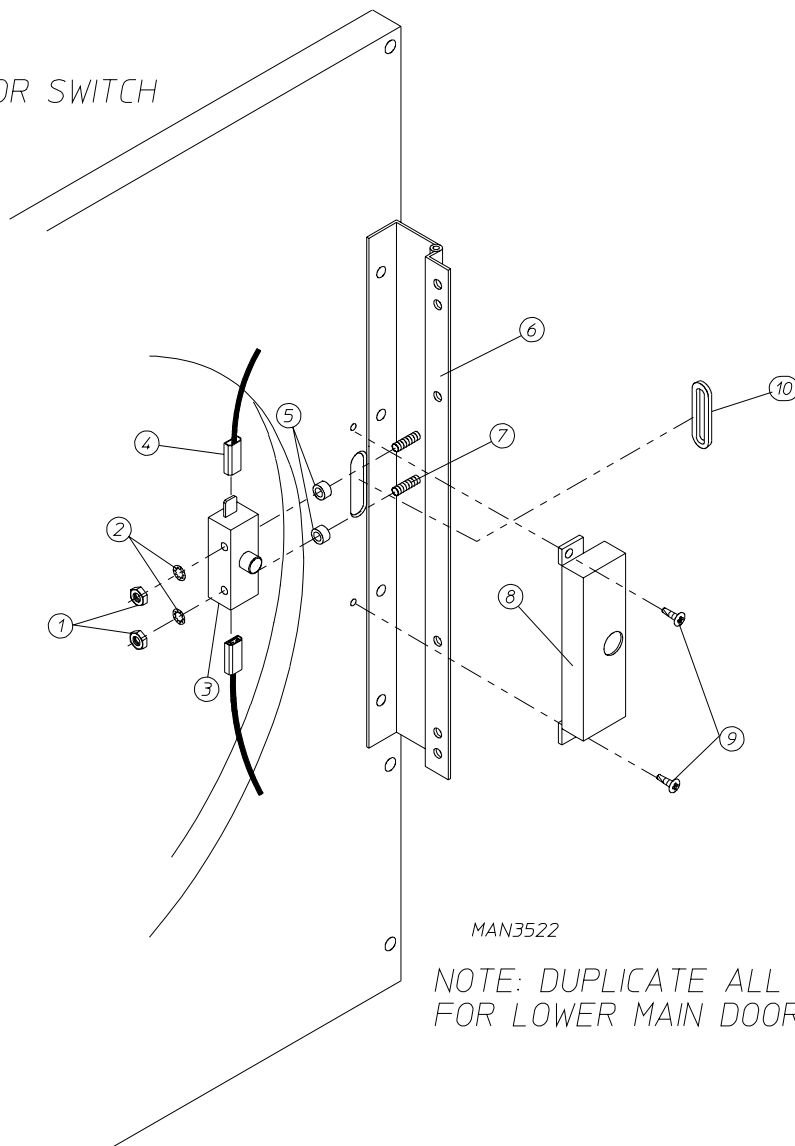
* Specify color when ordering.



Illus. No.	Part No.	Qty.	Description
1	825630	1	Front Panel with Magnetic Door Latch (includes illus. nos. 1 and 5 through 7)
	883371	1	White Front Panel with Mechanical Door Latch (includes illus. nos. 1 through 3 and 5)
	883372	1	Bisque Front Panel Assembly with Mechanical Door Latch (includes illus. nos. 1 through 3 and 5)
	883488	1	Stainless Steel Front Panel Assembly with Mechanical Door Latch (includes illus. nos. 1 through 3 and 5)
2	154215	2	1/8" Pop Rivet
3	881987	1	Friction Door Latch Kit (includes illus. nos. 2 and 3)
4	150313	9	#10-16 x 1/2" TORX® Type I Screw
	400505	1	TORX® Bit for removing above
5	121405	1	Rubber Grommet
6	102004	2	3/4" Door Magnet
7	152223	2	#10-32 x 1/2" T-20 Torx® Screw

Main Door Switch Assembly

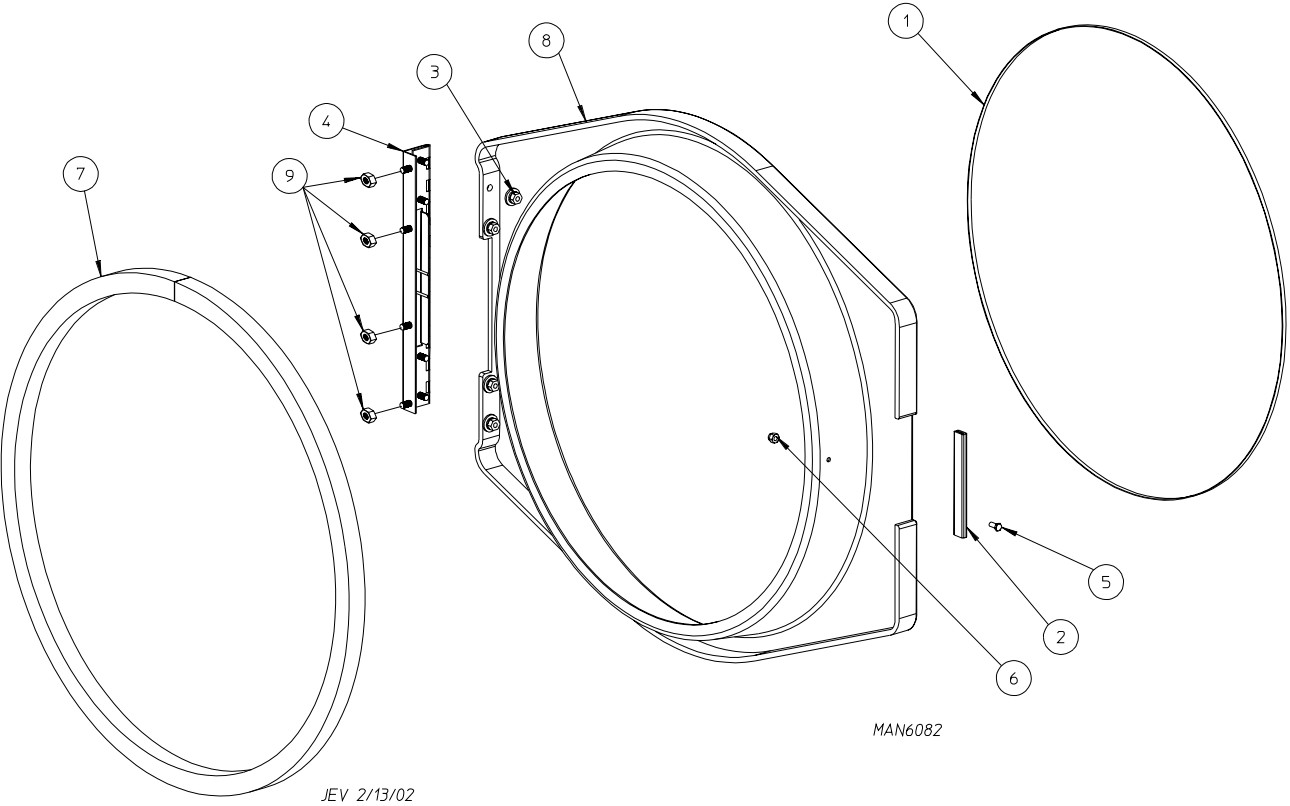
UPPER MAIN DOOR SWITCH



MAN3522

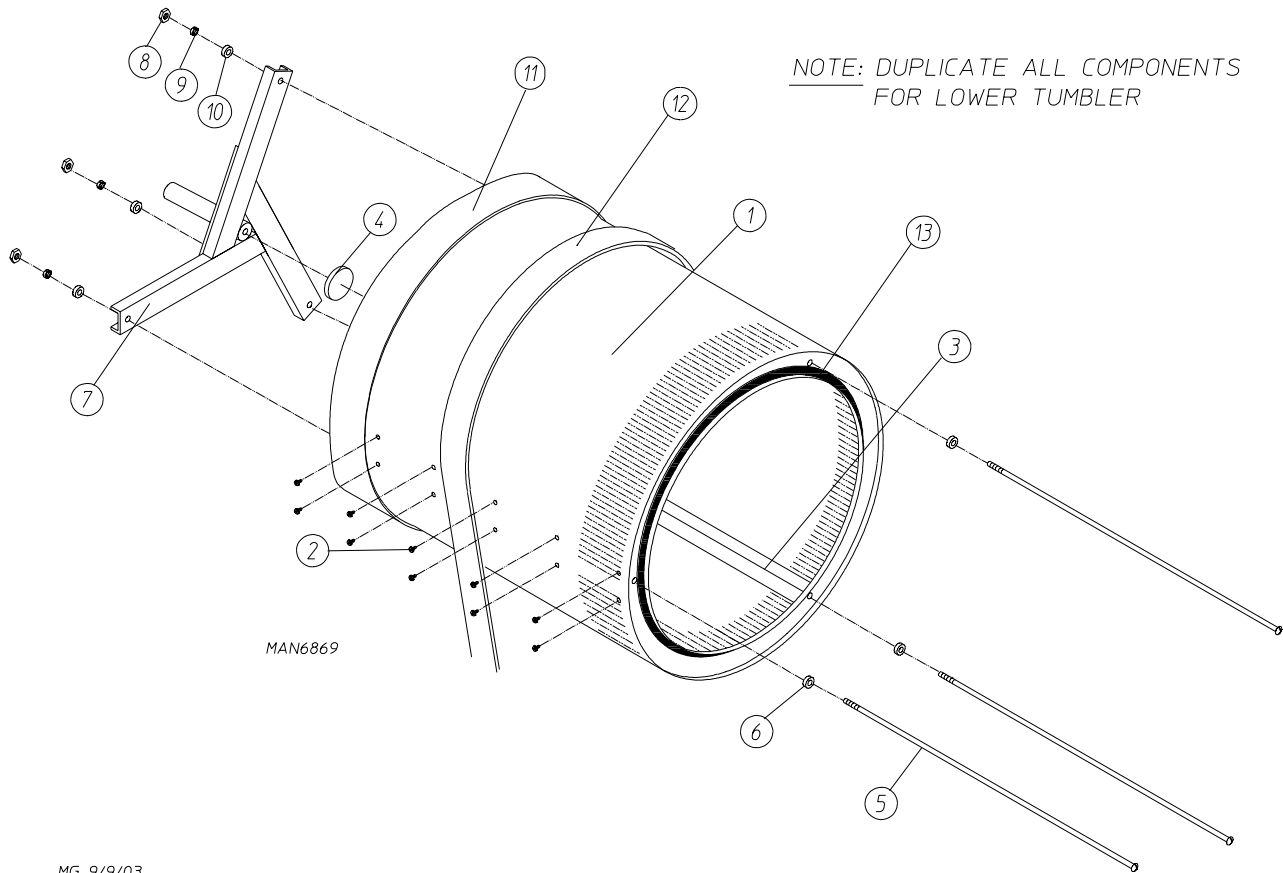
NOTE: DUPLICATE ALL COMPONENTS FOR LOWER MAIN DOOR SWITCH

<u>Illus. No.</u>	<u>Part No.</u>	<u>Qty.</u>	<u>Description</u>
1	152013	2	#6-32 Hex Nut
2	153008	2	#6 Lock Washer
3	137005	1	Single-Pole Door Switch
4	121028	2	Insulated Female Terminal
5	154281	2	3/8" Standard Nylon Spacers
6	801524	1	12-1/2" Black Cold Rolled Steel Main Door Hinge Assembly
7	153565	2	#6 Stud
8	881246	1	Main Door Switch Housing ONLY
9	150201	2	#10-32 x 1/4" Phillips Pan Head Screw
10	121405	1	Rubber Grommet



<u>Illus. No.</u>	<u>Part No.</u>	<u>Qty.</u>	<u>Description</u>
1	102210	1	20- 7/16 Door Glass
2	102328	1	Handle Edge
3	152014	4	1/4-20 Free Spin Wash Nut
4	801524	1	Black Door Hinge
5	150120	1	Latch Screw
6	151010	1	Black Acorn Nut
7	102349	4	Gasket
8	882991	4	Black Main Door Assembly (includes illus. nos. 1 through 8)
9	152014	4	1/4-20 Free Spin Wash Nut

UPPER TUMBLER / SUPPORT

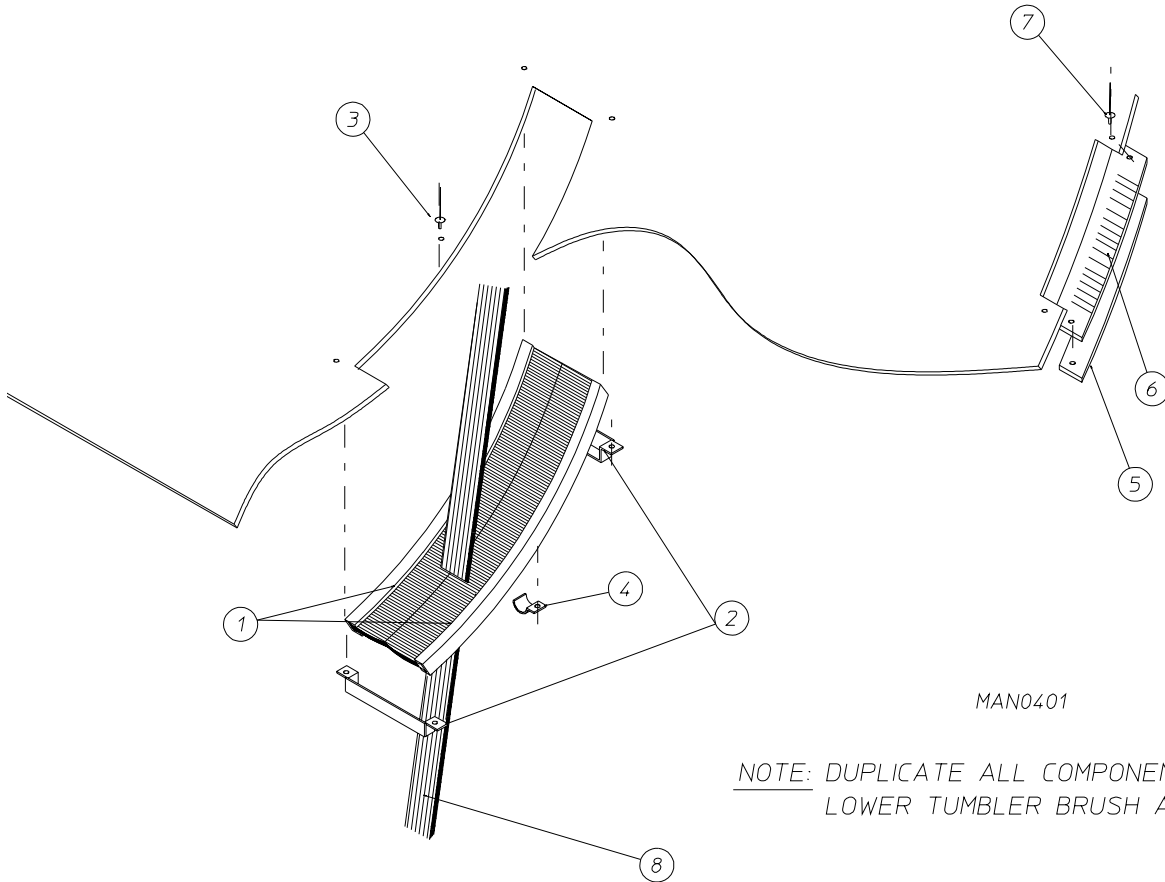


MG 9/9/03

<u>Illus. No.</u>	<u>Part No.</u>	<u>Qty.</u>	<u>Description</u>
1	800832	1	Tumbler and Support Assembly Complete with Felt Collar (includes illus. nos. 1 through 11 and 13)
	800892	1	Stainless Steel Tumbler and Support Assembly Complete with Felt Collar (includes illus. nos. 1 through 11 and 13)
	800722	1	Tumbler ONLY without Felt Collar (includes illus. nos. 1, 2, and 3)
	800842	1	Stainless Steel Tumbler ONLY without Felt Collar (includes illus. nos. 1, 2, and 3)
2	150313	30	#10-16 x 1/2" TORX Plus Type 1 Head Crimptite Screw
3	301315	2	Galvanized Short Tumbler Rib
	301316	1	Galvanized Tall Tumbler Rib
	301414	2	Stainless Steel Short Tumbler Rib
	301415	1	Stainless Steel Tall Tumbler Rib
4	115986	1	Felt Tumbler Pad
5	100915	3	3/18-16 x 31-1/8" Tie Rod
6	153004	3	3/8" x 1" Flat Washer
7	850066	1	Tumbler Support ONLY
8	152027	3	3/8-16 Nylon Insert Locknut
9	153005	3	3/8" Lock Washer
10	153004	3	3/8" x 1" Flat Washer
11	116003	1	Felt Collar
	401010	1	#847 Adhesive for Felt Collar (5 oz. tube)
12	100173	1	12-Rib 95" Belt
13	115992	1	Felt Collar
	401010	1	#847 Adhesive for Felt Collar (5 oz. tube)

Tumbler Brush Assembly

UPPER TUMBLER BRUSH

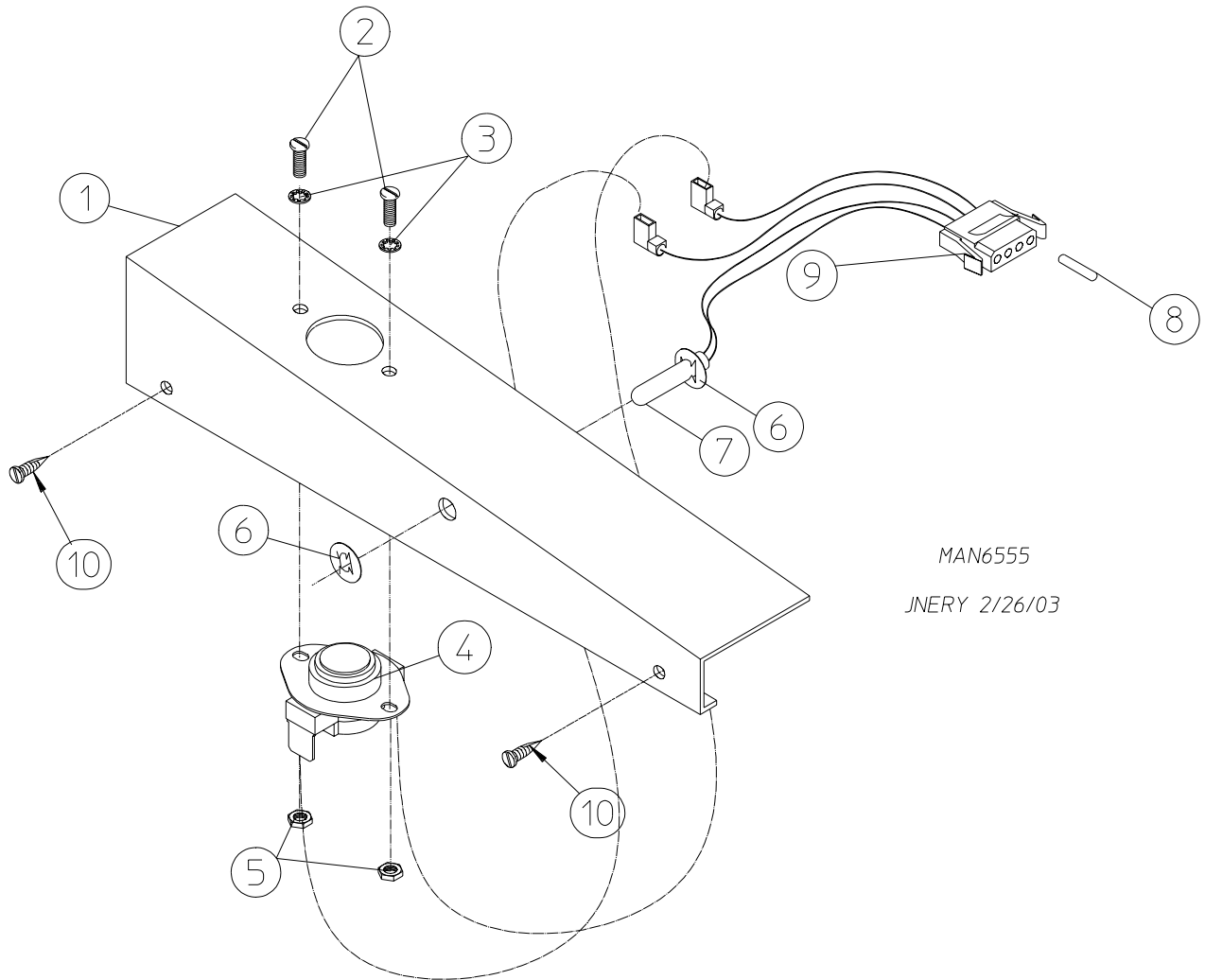


MAN0401

NOTE: DUPLICATE ALL COMPONENTS FOR LOWER TUMBLER BRUSH ASSEMBLY

<u>Illus. No.</u>	<u>Part No.</u>	<u>Qty.</u>	<u>Description</u>
1	170198	2	Drive Belt Sealing Brush
2	317656	2	Sealing Brush Clip End
3	154210	6	5/32" x 3/16" Pop Rivet
4	120117	2	3/8" EMT Hanger
5	317651	1	Wrapper Gasket Strip
6	102325	1	8-1/2" x 1-1/2" x 1/8" Wrapper Channel Gasket
7	154210	2	5/32" x 3/16" Pop Rivet
8	100173	1	12-Rib 95" Belt

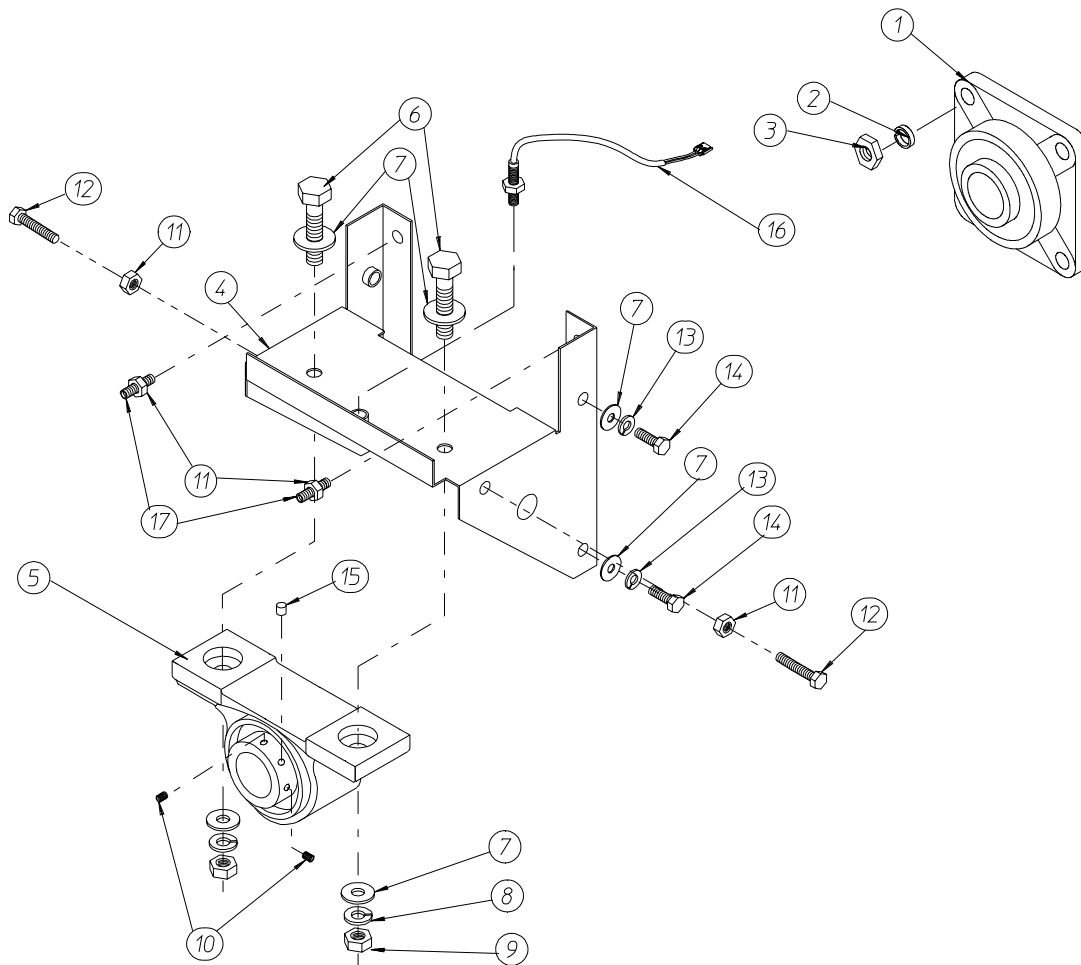
Temperature Sensor Probe Assembly



MAN6555
JNERY 2/26/03

Illus. No.	Part No.	Qty.	Description
1	852324	1	Temperature Sensor Bracket Assembly Complete (includes illus. nos. 1 through 10)
2	150005	2	#6-32 x 1/4" Phillips Head Machine Screw
3	153010	2	#6 Star Washer
4	130106	1	170° Large Thermostat
5	152000	2	#6-32 Hex Nut
6	154007	2	1/4" Tinnerman Push-On Fastener
7	852321	1	Temperature Sensor Probe Assembly (includes illus. nos. 7 through 9)
8	122701	4	Socket Terminal ONLY
9	122605	1	4-Pin Socket Connector (female)
10	150301	2	#8-18 x 7/16" Phillips Pan Head TEK Screw
	122801	1	Pin / Socket Extraction Tool ... Not Illustrated

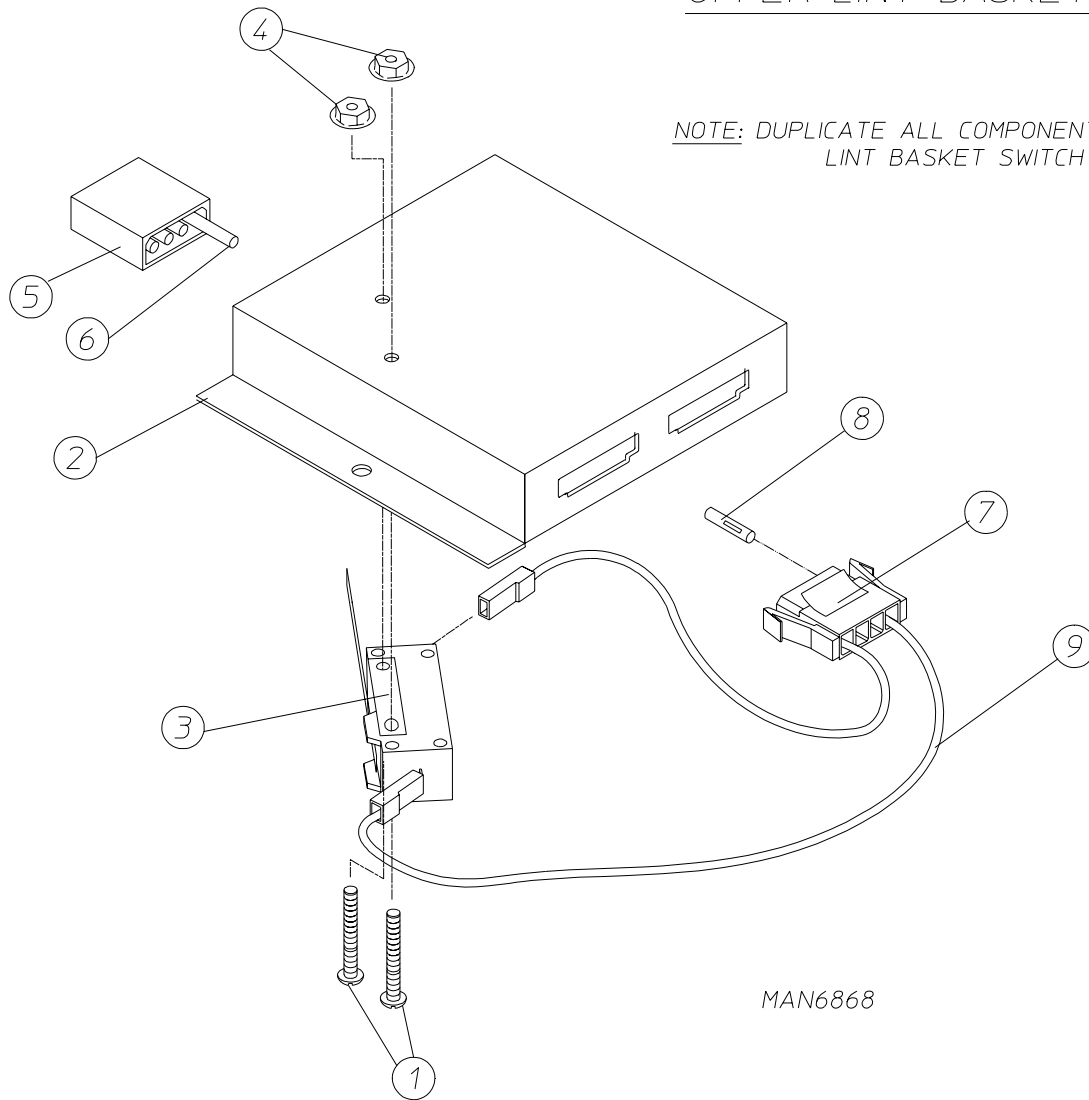
Tumbler Bearing Assembly



Illus. No.	Part No.	Qty.	Description
1	880203	1	1-3/8" Flange Bearing ONLY
2	153005	4	3/8" Lock Washer
3	152005	4	3/8-16 Hex Nut
4	882545	1	Bearing Assembly Complete (includes illus. nos. 4 through 17) For Models Mfd. with Rotational Sensor
	882543	1	Bearing Support ONLY (for models mfd. with rotational sensor)
5	880779	1	1-3/8" Pillow Block Bearing (for models mfd. with rotational sensor)
6	150601	2	3/8-16 x 2" Hex Bolt
7	153004	8	3/8" Flat Washer
8	153005	2	3/8" Lock Washer
9	152005	2	3/8-16 Hex Nut
10	154321	2	5/16-24 x 3/8" Setscrew (black)
11	152004	4	5/16-18 Hex Nut
12	150621	2	5/16-18 x 1-1/2" Tap Bolt
13	153002	4	5/16" Lock Washer
14	150501	4	5/16-18 x 3/4" Tap Bolt
15	102120	1	Sintered 8 Magnet
16	822735	1	Rotational Sensor Assembly (for models mfd. with rotational sensor)
17	150610	2	5/16-18 x 1-1/2" Allen Setscrew

UPPER LINT BASKET SWITCH

NOTE: DUPLICATE ALL COMPONENTS FOR LOWER LINT BASKET SWITCH



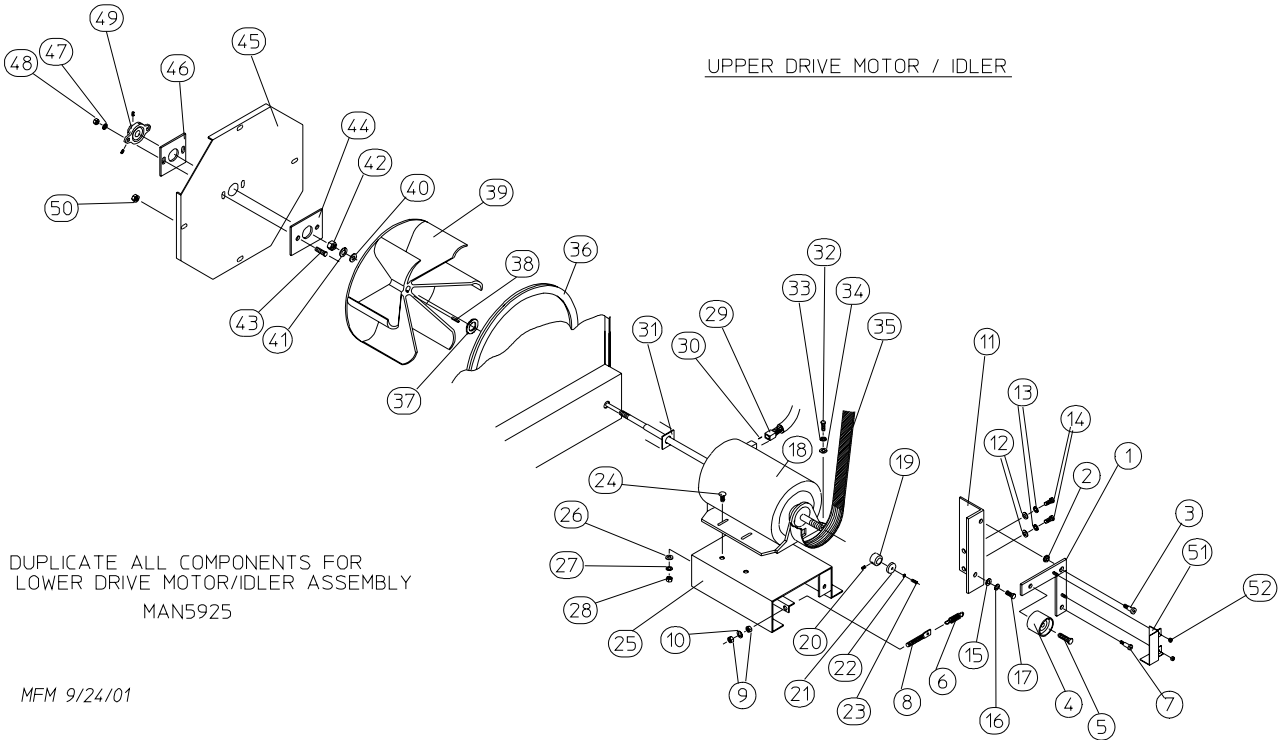
MAN6868

MG 9/9/03

<u>Illus. No.</u>	<u>Part No.</u>	<u>Qty.</u>	<u>Description</u>
1	150006	2	#6-32 x 7/8" Round Head Machine Screw
2	304039	1	Lint Switch Mounting Bracket ONLY
3	136992	1	Lint Drawer (basket) Safety Switch ONLY
4	152013	2	#6-32 Hex Nut
5	122604	2	4-Pin Connector ONLY
6	122700	4	Pin Terminal ONLY
7	122605	2	4-Pin Socket Connector ONLY
8	122701	4	Socket Terminal ONLY
	122801	1	Pin / Socket Extraction Tool ... Not Illustrated

Totally Enclosed, Non-Vent Motor / Idler Assemblies

UPPER DRIVE MOTOR / IDLER



NOTE: DUPLICATE ALL COMPONENTS FOR LOWER DRIVE MOTOR/IDLER ASSEMBLY
MAN5925

MFM 9/24/01

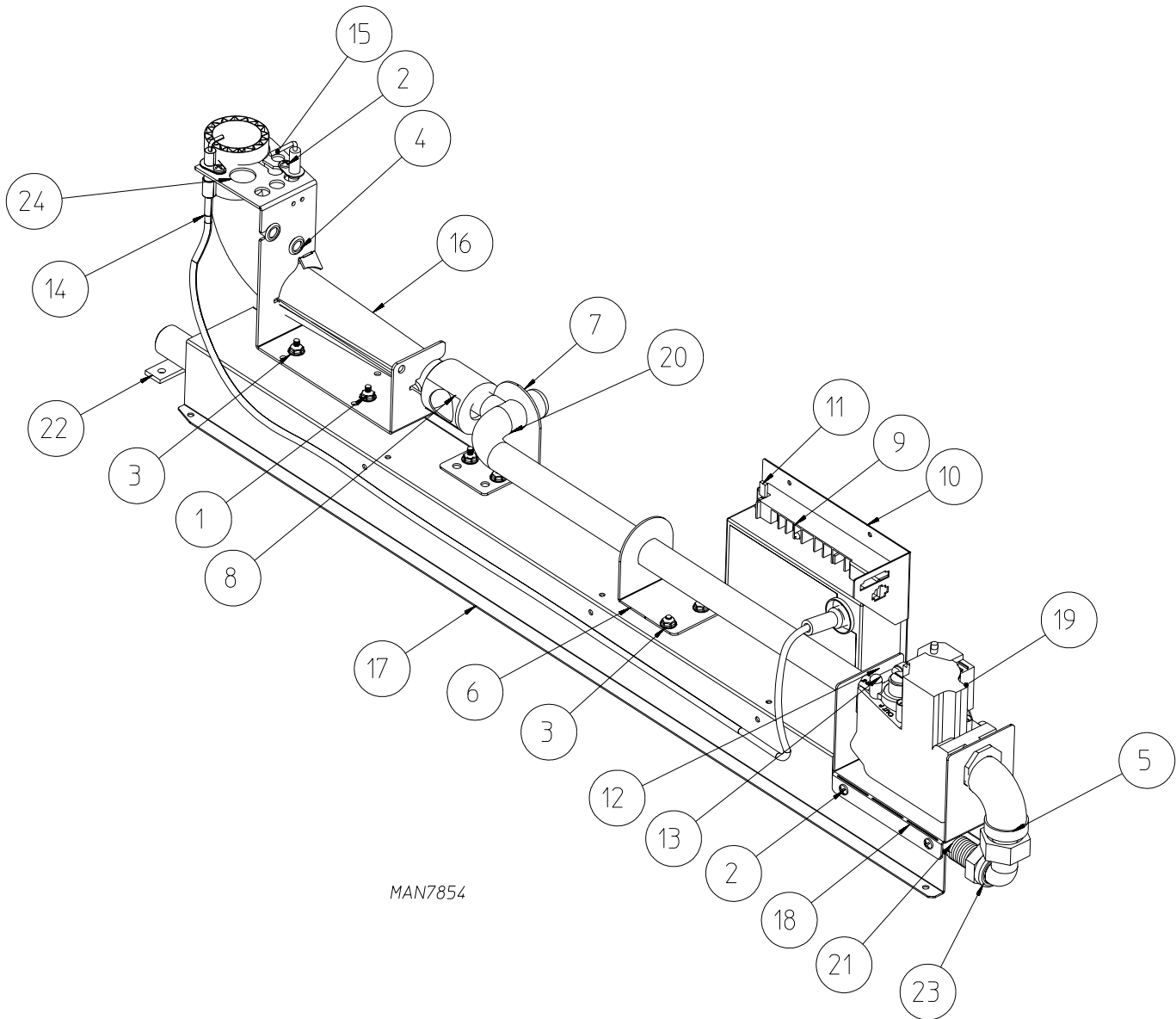
Illus. No.	Part No.	Qty.	Description
1	882910	1	Upper and Lower Idler Arm ONLY
	801019	1	Upper and Lower Idler Arm Assembly with Hardware (includes illus. nos. 1 through 10)
2	121350	1	13/32 x 3/8" I.D. Bronze
3	154266	1	5/16 x 3/8" Shoulder Bolt
4	100250	1	Back Side Idler Assembly
5	150600	1	3/8-16 x 1-1/2" Hex Head Machine Bolt
6	157010	1	1-7/8" Extension Spring
7	154276	1	1/4-20 x 5/8" Shoulder Bolt
8	154275	1	3/8-16 x 3-3/8" Spade Bolt
9	152005	2	3/8-16 Hex Nut
10	153005	1	3/8" Lock Washer
11	850135	1	Idler Angle
12	153001	2	5/16" Flat Washer
13	153002	2	5/16" Lock Washer
14	150501	2	5/16-18 x 3/4" Hex Head Machine Bolt
15	153001	2	5/16" Flat Washer
16	153002	2	5/16" Lock Washer
17	150501	2	5/16-18 x 3/4" Hex Head Machine Bolt
18	100064	1	1/3 hp 120/230v 1ø 60 Hz Totally Enclosed, Non-Vent Motor with Plug
19	101097	1	Rear Motor Shaft Bushing (for 60 Hz models)
20	154327	1	1/4-20 x 3/8" Socket Setscrew
21	101096	1	Front Motor Shaft Bushing (for 60 Hz models)
22	153024	1	#10 Lock Washer
23	150216	1	#10-32 x 3/4" Left-Hand Phillips Round Head Screw

Totally Enclosed, Non-Vent Motor / Idler Assemblies

<u>Illus. No.</u>	<u>Part No.</u>	<u>Qty.</u>	<u>Description</u>
24	154279	4	5/16-18 x 3/4" Carriage Bolt
25	800917	1	Motor Mount ONLY
	803918	1	1/3 hp 120/230v 1Ø 60 Hz Totally Enclosed, Non-Vent Motor Mount Assembly Complete (includes illus. nos. 11 through 28 and 31)
26	153001	4	5/16" Flat Washer
27	153002	4	5/16" Lock Washer
28	152004	4	5/16-18 Hex Nut
29	137030	1	8-Pin Housing
30	122701	8	Socket Terminal ONLY
	122801	1	Pin / Socket Extraction Tool ... Not Illustrated
31	116010	1	Felt Motor Seal ONLY
32	150501	4	5/16-18 x 3/4" Hex Head Machine Bolt
33	153002	4	5/16" Lock Washer
34	153001	4	5/16" Flat Washer
35	100173	1	12-Rib 95" Belt
36	117604	3	Neoprene Sponge Tape (sold by the foot)
37	153054	1	Motor Washer
38	100705	1	3/16" x 3/16" x 1-3/8" Key
39	802831	1	12-1/2" Impellor with 3/4" Bore
40	153051	1	3/4" Flat Washer
41	153040	1	3/4" Lock Washer
42	152025	1	3/4-16 Jam Nut
43	153525	2	1/4-20 x 1" Self-Clinching Stud
44	850132	1	Bearing Backup Plate (includes illus. nos. 43 and 44)
	852104	1	Bearing Backup Plate Assembly (includes illus. nos. 43, 44, and 46 through 48)
45	880885	1	Impellor Cover
46	116011	1	Bearing Felt Seal
47	153007	2	1/4" Lock Washer
48	152002	2	1/4-20 Hex Nut
49	880225	1	1/2" Flange Bearing
50	152014	4	1/4-20 Free Spin Wash Nut
51	314423	1	Belt Guard
52	154277	2	3/8" x 1/2" Screw

Gas Train Assembly

For Models Mfd. as of June 26, 2009



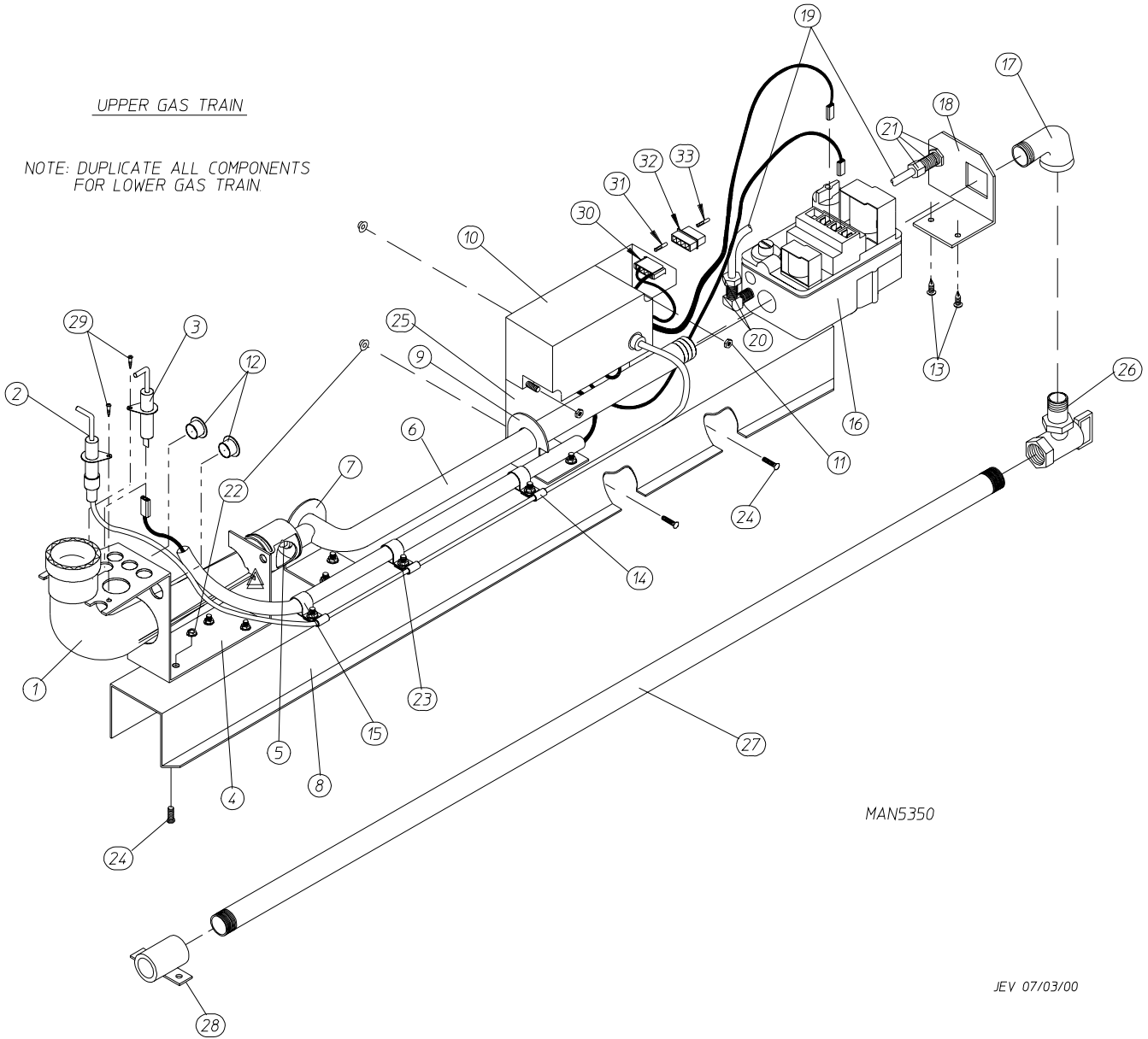
<u>Illus. No.</u>	<u>Part No.</u>	<u>Qty.</u>	<u>Description</u>
1	153528	8	#8-32 x 1/2" Self-Clinching Stud
2	150301	6	#8-18 x 7/16" Phillips Pan Head TEK Screw
3	151001	8	#8-32 Pal Nut
4	121300	2	Open/Closed Bushing
5	142506	1	1/2" x 1/2" Street Elbow Black Iron
6	318718	1	Pipe Bracket
7	318600	1	Manifold Bracket
8	140856	1	#23 Burner Orifice (Natural Gas)
	140810	1	#42 Burner Orifice (Liquid Propane Gas)
9	128937	1	Direct Spark Ignition Module (3 Tries)
10	815724	1	Direct Spark Ignition Module Bracket
11	822513	1	Ground Wire
12	153017	1	#6 SAE Washer
13	152013	1	#6-32 Hex Nut
14	829998	1	H.V. Cable Assembly
15	128918	1	Flame Sensor
16	141130	1	Burner Tube
17	345626	1	Gas Valve Slide Mount
18	345625	1	J-Valve Bracket
19	128979	1	Redundant Gas Valve (natural gas)
	887273	1	Redundant Gas Valve (liquid propane gas)
20	141225	1	Single Port Manifold
21	142805	1	Black Iron Pipe (1/2" x 34-1/2")
22	142934	1	1/2" Coupling with Mounting Tabs
23	141317	1	1/2" Bronze Union Elbow
24	318009	1	Burner Tube Bracket
—	121499	6	3/16" Push Mount Wire Tie
—	880145	1	Liquid Propane Conversion Kit

Gas Train Assembly

For Models Mfd. Prior to June 26, 2009

UPPER GAS TRAIN

NOTE: DUPLICATE ALL COMPONENTS FOR LOWER GAS TRAIN



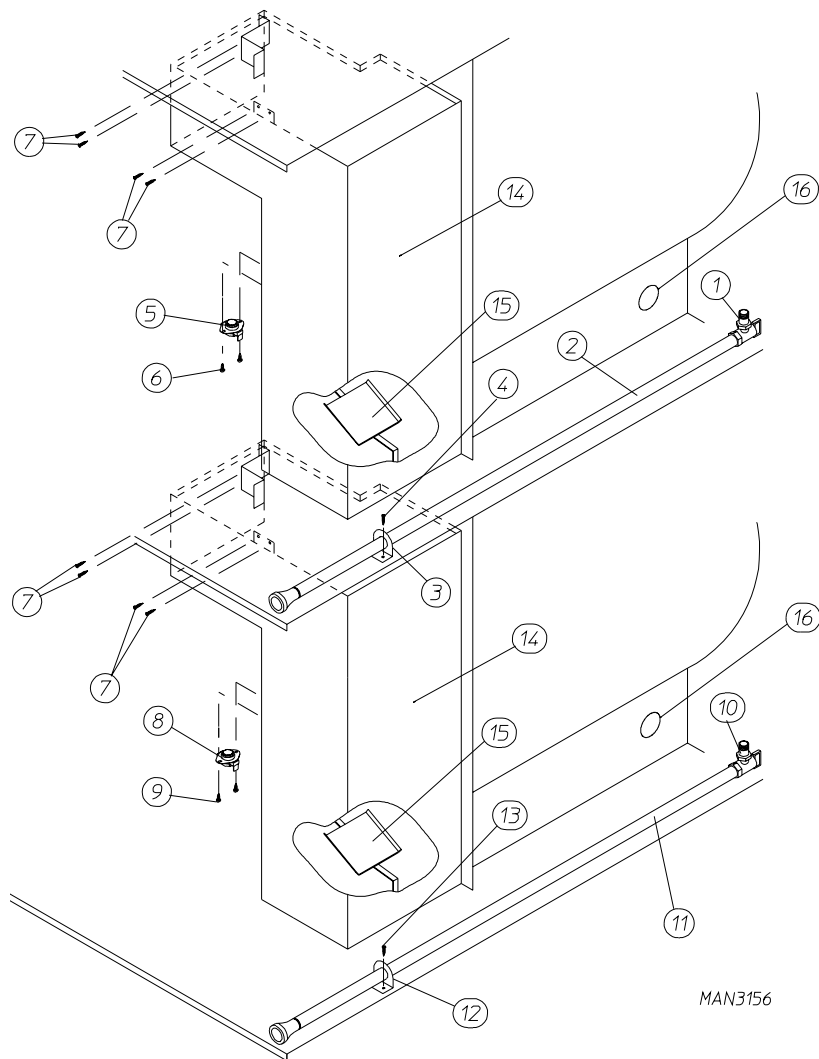
Illus. No.	Part No.	Qty.	Description
1	141130	1	Direct Spark Ignition Up-Shot Burner Tube ONLY
2	128917	1	Spark Ignitor with 36" Wire
3	128918	1	Flame Sensor
4	318009	1	Burner Tube Bracket (PSE)
5	140856**	1	#23 Burner Orifice (natural gas) ONLY
	140810**	1	#42 Burner Orifice (liquid propane gas) ONLY
6	141225	1	Single-Port Manifold
7	318700	1	Pipe Bracket
8	882721*	1	Direct Spark Ignition Natural Gas Train Assembly Complete (includes illus. nos. 1 through 4, 6 through 25, and 29 through 31)
	882722*	1	Direct Spark Ignition Liquid Propane Gas Train Assembly Complete (includes illus. nos. 1 through 4, 6 through 25, and 29 through 31)
	319522	1	Gas Valve Train Slide ONLY

<u>Illus. No.</u>	<u>Part No.</u>	<u>Qty.</u>	<u>Description</u>
9	318711	1	Notched Pipe Bracket
10	801048	1	Direct Spark Ignition Module ONLY (Johnson Controls)
11	152013	2	#6-32 Hex Nut
12	121300	2	Open / Closed Bushing
13	150301	2	#8-18 x 7/16" Phillips Pan Head TEK Screw
14	121491	3	5/8" White Nylon Clamp
15	121492	3	3/16" Plastic Clip
16	128927	1	1/2" 24 VAC Direct Spark Ignition Redundant (natural gas) Valve
	880960	1	Direct Spark Ignition Gas Valve (liquid propane gas) ONLY
17	142506	1	1/2" x 1/2" Street Elbow
18	318712	1	Pipe Bracket
19	882157	1	1/4" Aluminum (12" length)
20	143203	1	Aluminum Tubing Adapter
21	143259	1	Aluminum Tubing Compression Fitting
22	151001	8	#8-32 Pal Nut
23	152001	3	#8-32 x 3/8" Hex Nut
24	153528	9	#8-32 x 1/2" Self-Clinching Stud
25	815974	1	Direct Spark Ignition Module Mounting Bracket (Johnson)
26	881367	1	1/2" Union Shut Off with Tail Piece
27	142805	1	1/2" x 34-1/2" Pipe
28	142934	1	1/2" Coupling with Mounting Tabs
29	150315	2	#6 x 3/8" Phillips Pan Head Type "B" Screw
30	122605	1	4-Pin Socket Connector ONLY
	122801	1	Pin / Socket Extraction Tool ... Not Illustrated
31	122701	2	Socket Terminal ONLY
32	122604	1	4-Pin Connector ONLY
33	122700	2	Pin Terminal ONLY
—	883278**	1	Liquid Propane Conversion Kit

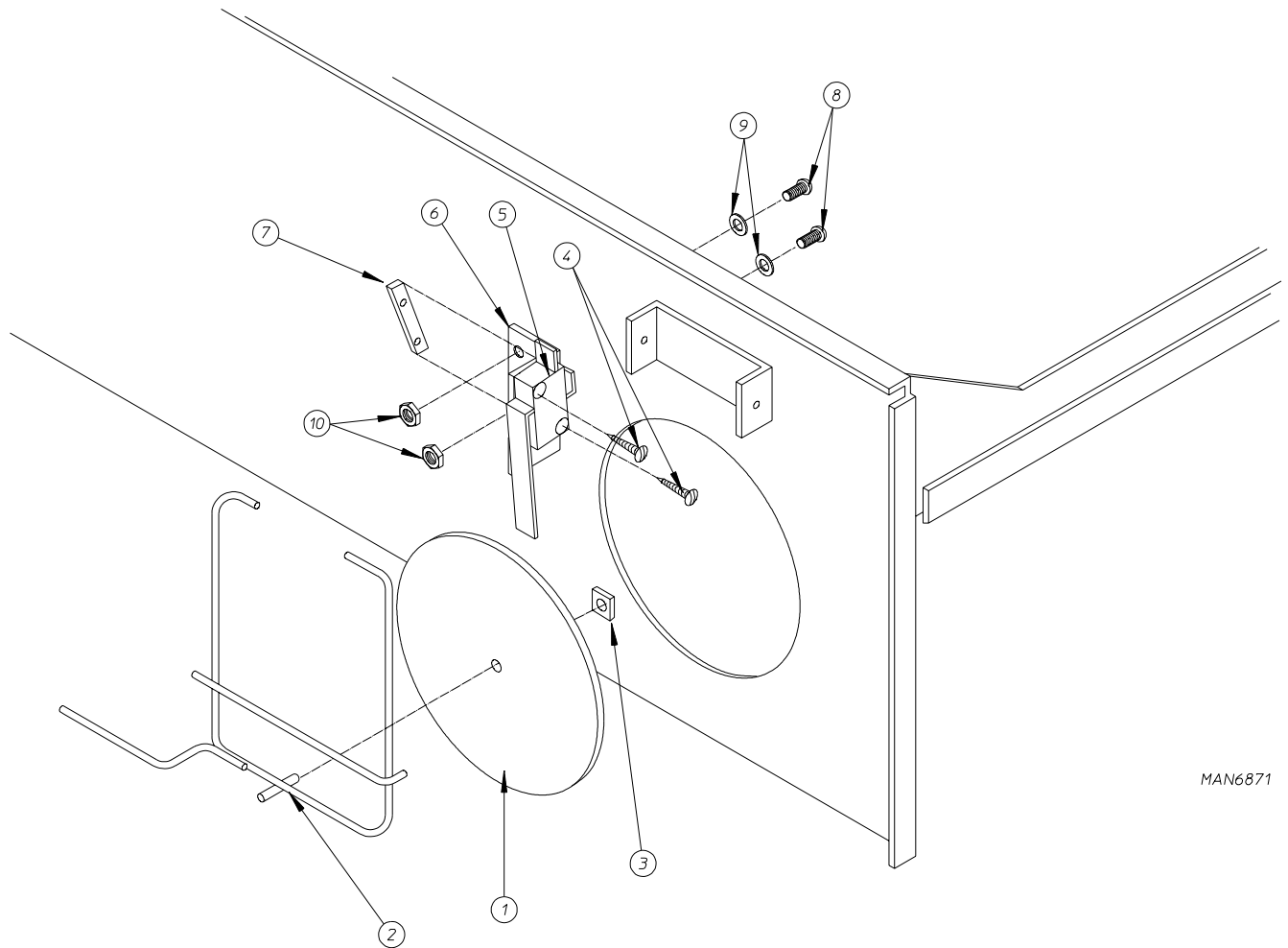
* Orifice is not included and must be ordered separately.

** Consult factory for elevations over 2,000 feet.

Burner Box / Piping Assemblies



Illus. No.	Part No.	Qty.	Description
1	881367	1	1/2" Union Shut Off with Tail Piece
2	142805	1	1/2" x 34-1/2" Pipe
	142809	1	1/2" x 29-1/8" Pipe
3	318700	1	Pipe Bracket
4	150300	2	#10-16 x 1/2" Hex Washer TEK Screw
5	130403	1	330° Burner Hi-Limit Thermostat
6	150300	2	#10-16 x 1/2" Hex Washer TEK Screw
7	150309	8	#10-16 x 1/2" Hex Head TEK CrimpTite Screw
8	130403	1	330° Burner Hi-Limit Thermostat
9	150300	2	#10-16 x 1/2" Hex Washer TEK Screw
10	881367	1	1/2" Union Shut Off with Tail Piece
11	142805	1	1/2" x 34-1/2" Pipe
12	318700	1	Pipe Bracket
13	150300	2	#10-16 x 1/2" Hex Washer TEK Screw
14	850742	2	Burner Box without Flame Spreader
15	318048	2	Flame Spreader
16	_____	-	Sail Switch (refer to Sail Switch Assembly on page 29)



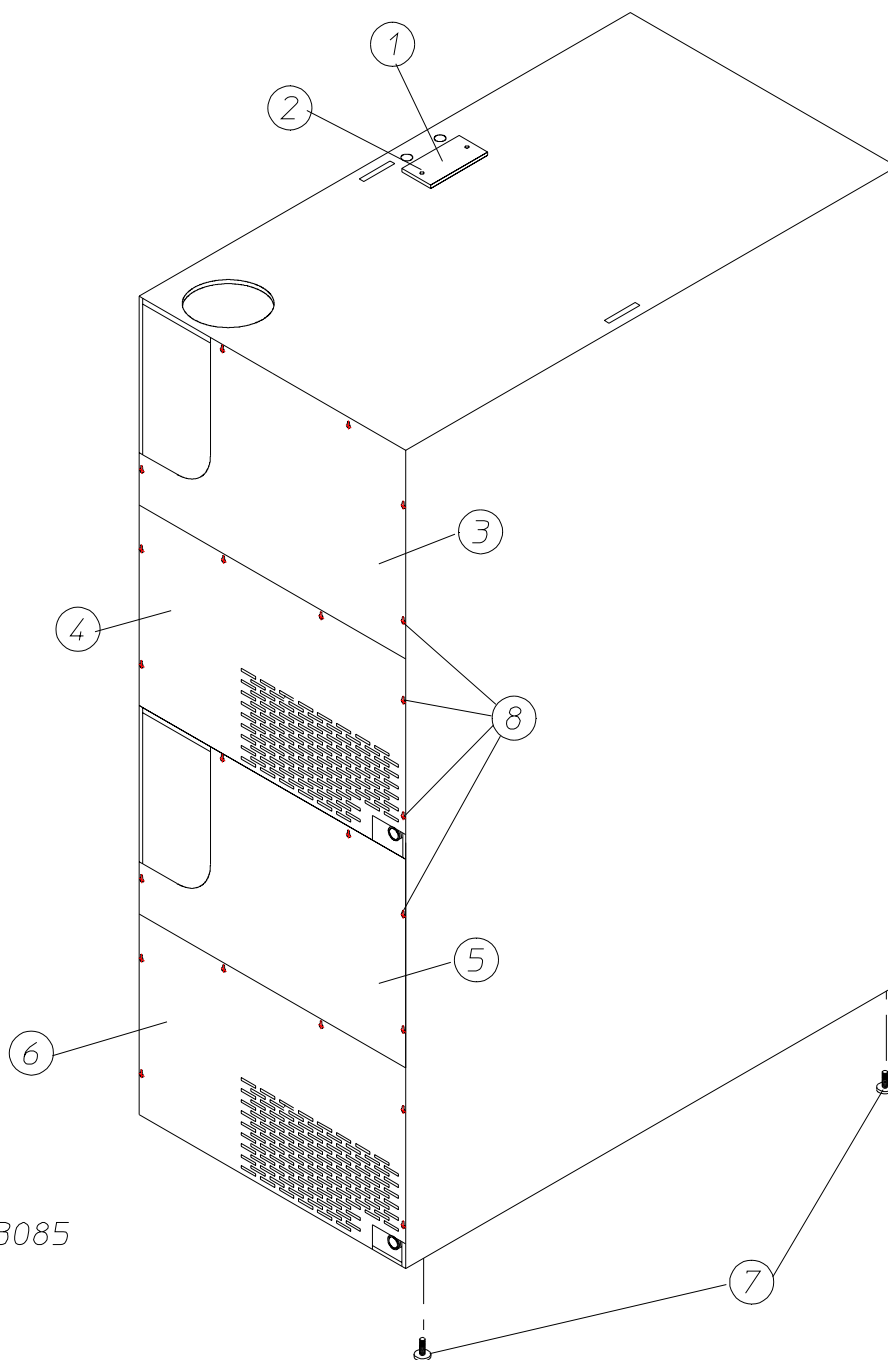
MAN6871

MG 9/10/03

*NOTE: DUPLICATE ALL COMPONENTS
FOR LOWER SAIL SWITCH ASSEMBLY*

<u>Illus. No.</u>	<u>Part No.</u>	<u>Qty.</u>	<u>Description</u>
1	319202	1	Sail Switch Damper
	802805	1	Sail Switch Rod and Damper Assembly (includes illus. nos. 1, 2, and 3)
2	105550	1	Sail Switch Rod
3	154002	1	1/8" Push-On Fastener
4	150303	2	#4 x 3/4" Pan Head "A" Machine Screw
5	122200	1	Sail Switch ONLY
	802807	1	Sail Switch Bracket Assembly (includes illus. nos. 4 through 7)
6	319208	1	Sail Switch Bracket
7	154004	1	Twin Speed Nut
8	150001	2	#6-32 x 1/2" Round Head Machine Screw
9	153010	2	#6 Star Washer
10	152000	2	#6-32 Hex Nut

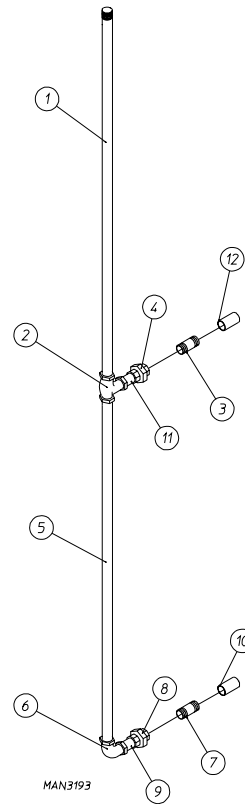
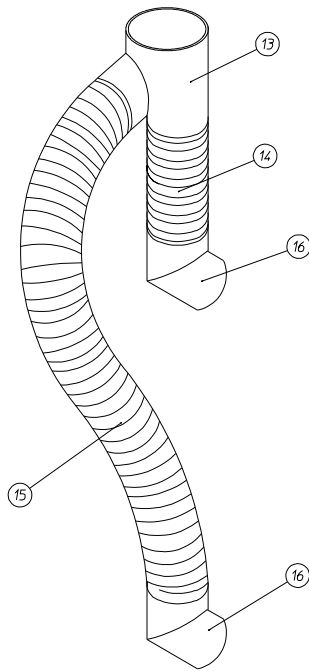
Back Guard Assemblies



MAN3085

Illus. No.	Part No.	Qty.	Description
1	315014	1	Top Electric Box Cover Plate
2	150301	2	#8-18 x 7/16" Phillips Pan Head TEK Screw
3	314404	1	Top Upper Guard
4	314405	1	Top Lower Guard
5	314404	1	Bottom Upper Guard
6	314405	1	Bottom Lower Guard
7	103500	4	Adjustable Leveling Leg
8	150301	22	#8-18 x 7/16" Phillips Pan Head TEK Screw

Optional Gas Piping and Exhaust Ducting Kits

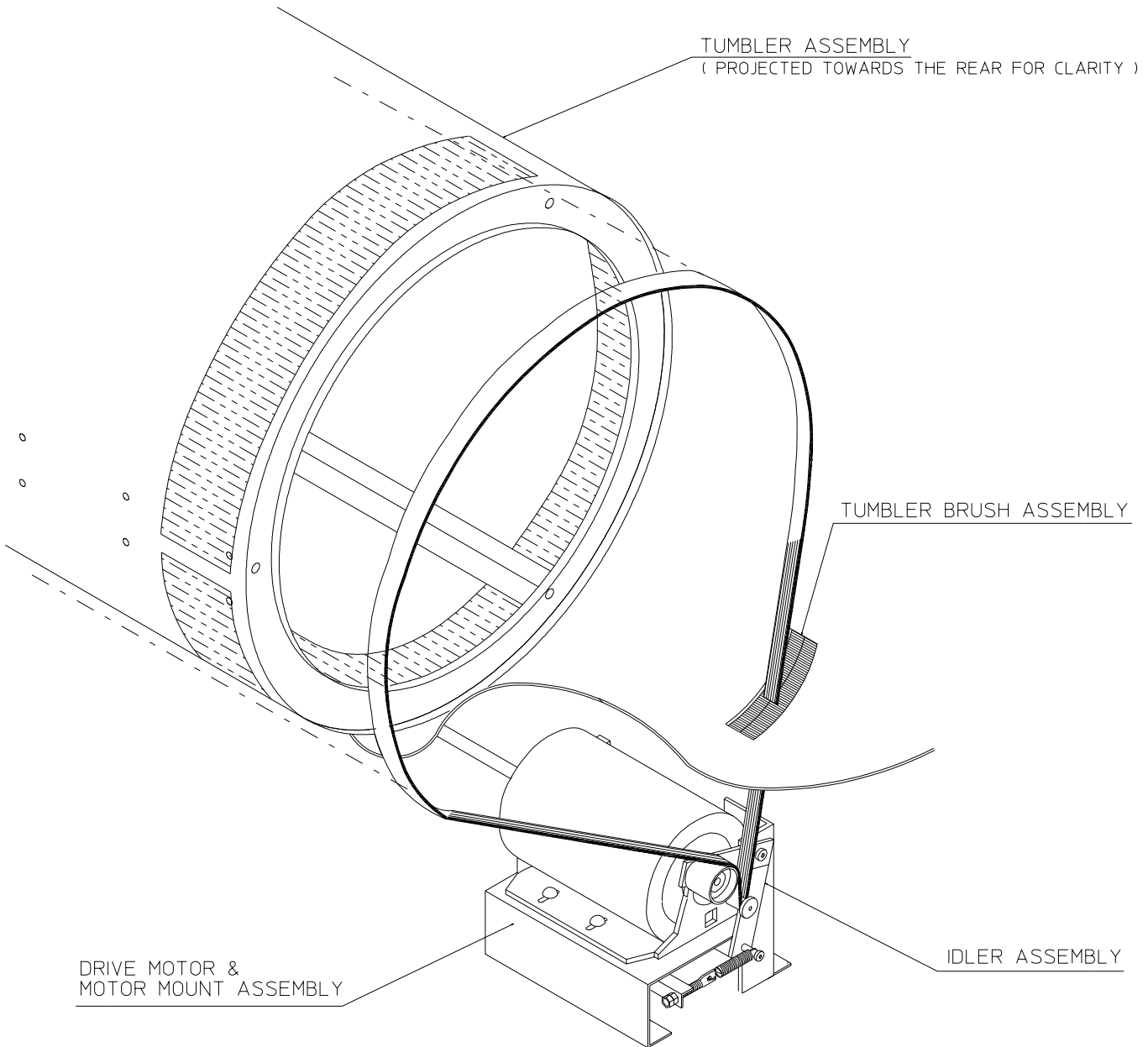


Illus. No.	Part No.	Qty.	Description
Optional Gas Piping Kit			
—	880128	1	Gas Piping Kit (includes illus. nos. 1 through 12)
1	142821	1	3/4" x 36" Pipe
2	142505	1	3/4" x 1/2" x 1/2" Tee
3	142814	1	1/2" x 2-1/2" Nipple
4	142600	1	1/2" Union
5	142824	1	1/2" x 37-1/4" Pipe
6	142500	1	1/2" x 90° Elbow
7	142814	1	1/2" x 2-1/2" Nipple
8	142600	1	1/2" Union
9	142700	1	1/2" Close Nipple
10	143001	1	1/2" Coupling
11	142700	1	1/2" Close Nipple
12	143001	1	1/2" Coupling

Optional Exhaust Ducting Kit			
—	882035	1	Exhaust Ducting Kit (includes illus. nos. 13 through 16)
13	143600	1	10" x 6" x 6" Wye Branch Duct
14	143519	1	6" Round x 4' Long Flexible Exhaust Duct
15	143509	1	6" Round x 8' Long Flexible Exhaust Duct
16	143536	2	6" Round x 45° Elbow
—	150300*	12	#10-16 x 1/2" Hex Washer TEK Screw
—	117505*	12	Aluminum Duct Tape (sold by the foot)

* Included with Exhaust Ducting Kit (ADC Part No. 882035).

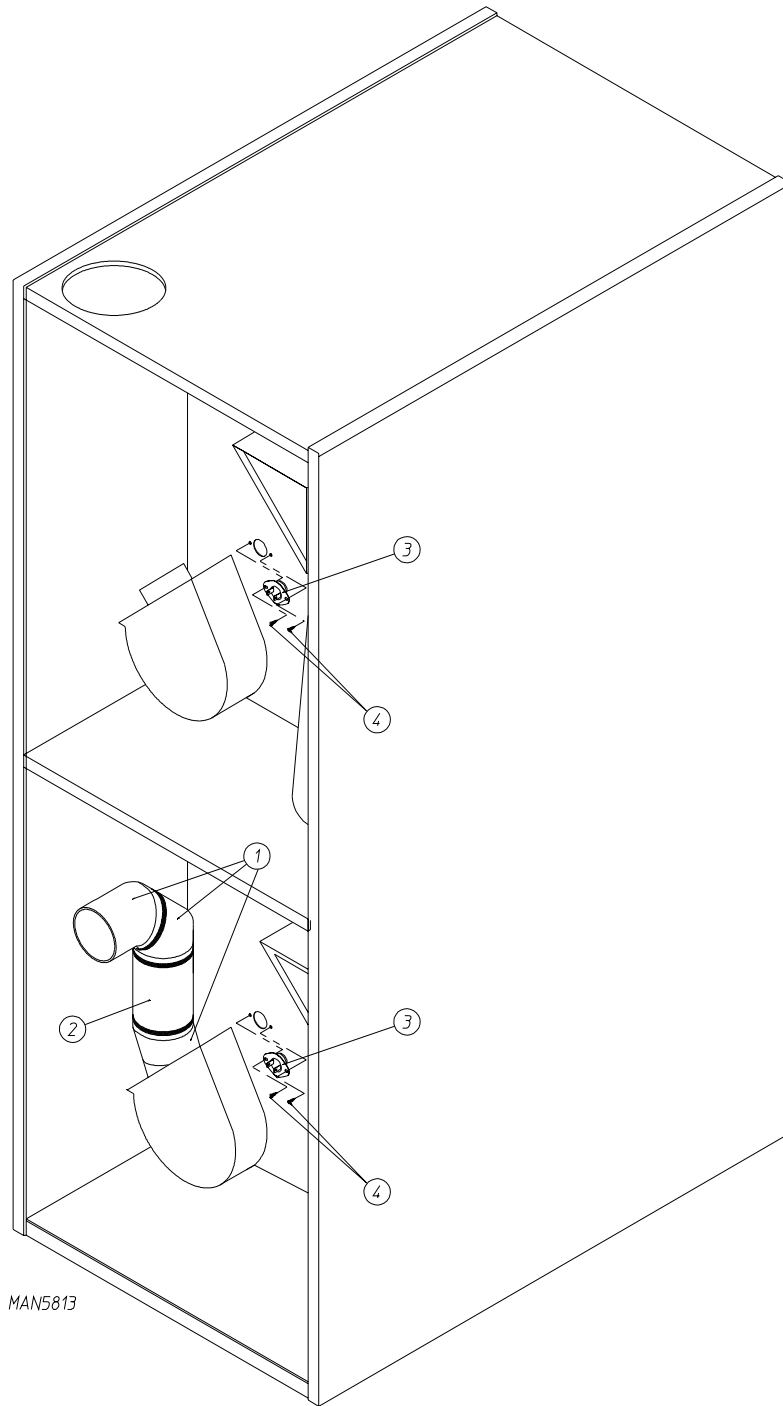
12-Rib 95" (J) Poly Belt Arrangement



MAN0433

12-RIB 95" (J) POLY BELT ARRANGEMENT

Bottom Exhaust Duct Assembly and Axial Temperature Sensor Probe Assembly



MAN5813

MFM 06/20/01

Illus. No.	Part No.	Qty.	Description
1	143536	2	6" Round x 45° Elbow
2	143545	1	6" Round x 6" Long Duct
-	117505*	5	Aluminum Duct Tape (sold by the foot)
3	883985	2	1-1/4" Temperature Sensor Probe
4	150301	4	#8-18 x 7/16" Phillips Pan Head Screw

* Tape all joints.

Additional Parts Available

<u>Part No.</u>	<u>Description</u>
100405	Bearing Puller (for fan [impellor] shaft bearing)
112039	"Black/White/Green Ground" Label
114001	"CAUTION – Exhaust/Lint Screen" Label
114006	"WARNING – Fire Hazards" Label
120802	Red Butt Connector
120903	#74B Wire Nut
121014	Crimp-On Wire Nut
121499	5-1/2" Harness Tie
121500	8" Harness Tie
121503	Harness Tie Mounting Clip
112804	Manometer (hydro gauge) for Measuring Gas Pressure
112280	"Lint Compartment" Label
404516	Bisque Brush-In-Cap Bottle Touch-Up Paint
410001	1/2" Allen Wrench (for gas valve tail piece removal)
450426	Johnson Controls Direct Spark Ignition Technical Manual
880884	Tumbler Puller Assembly
881299	Loctite Adhesive Kit (for setscrews)

