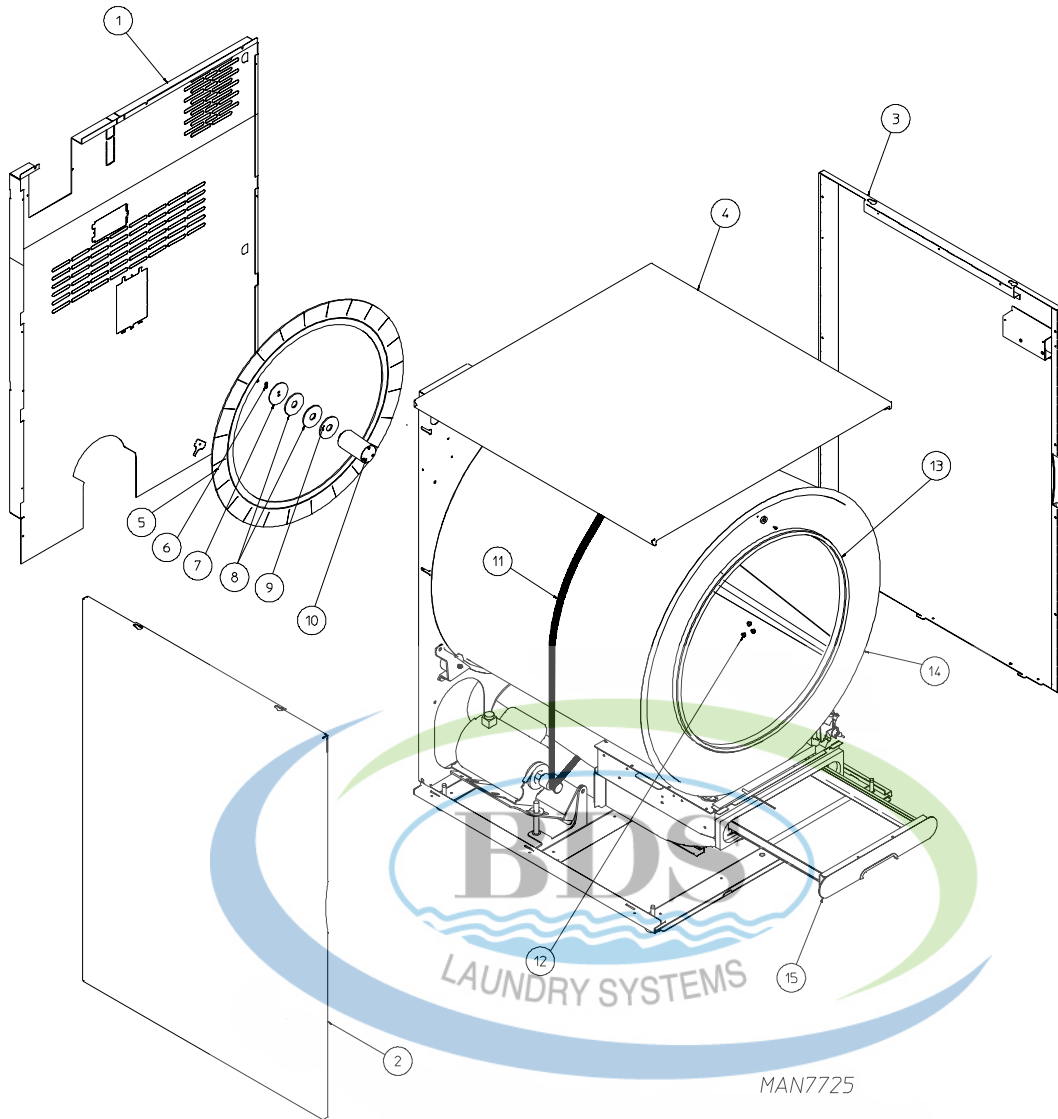


Table of Contents

MLG35

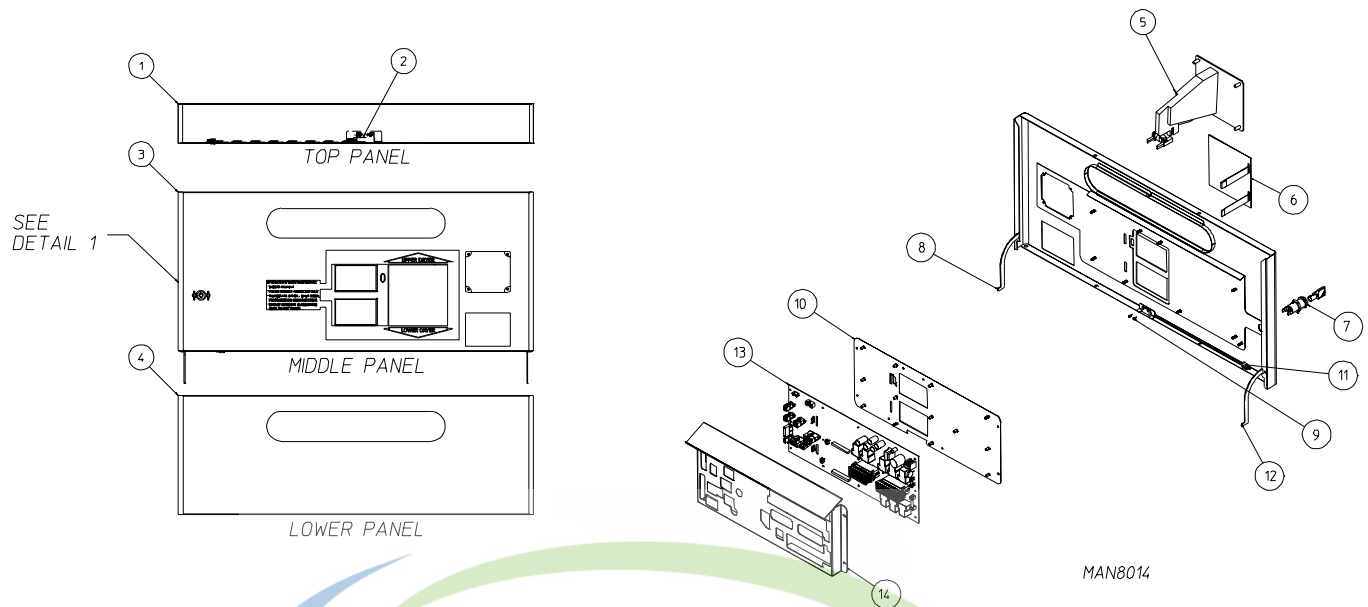
Overview Breakdown	4
Trim / Control Panels	5
Front Panel / Door Assembly	6
Blower Assembly	7
Rear Panel Assembly	8
Gas Train Assembly	9
Wheel Assembly	10
Motor Assembly	11
S.A.F.E. System Assembly	12





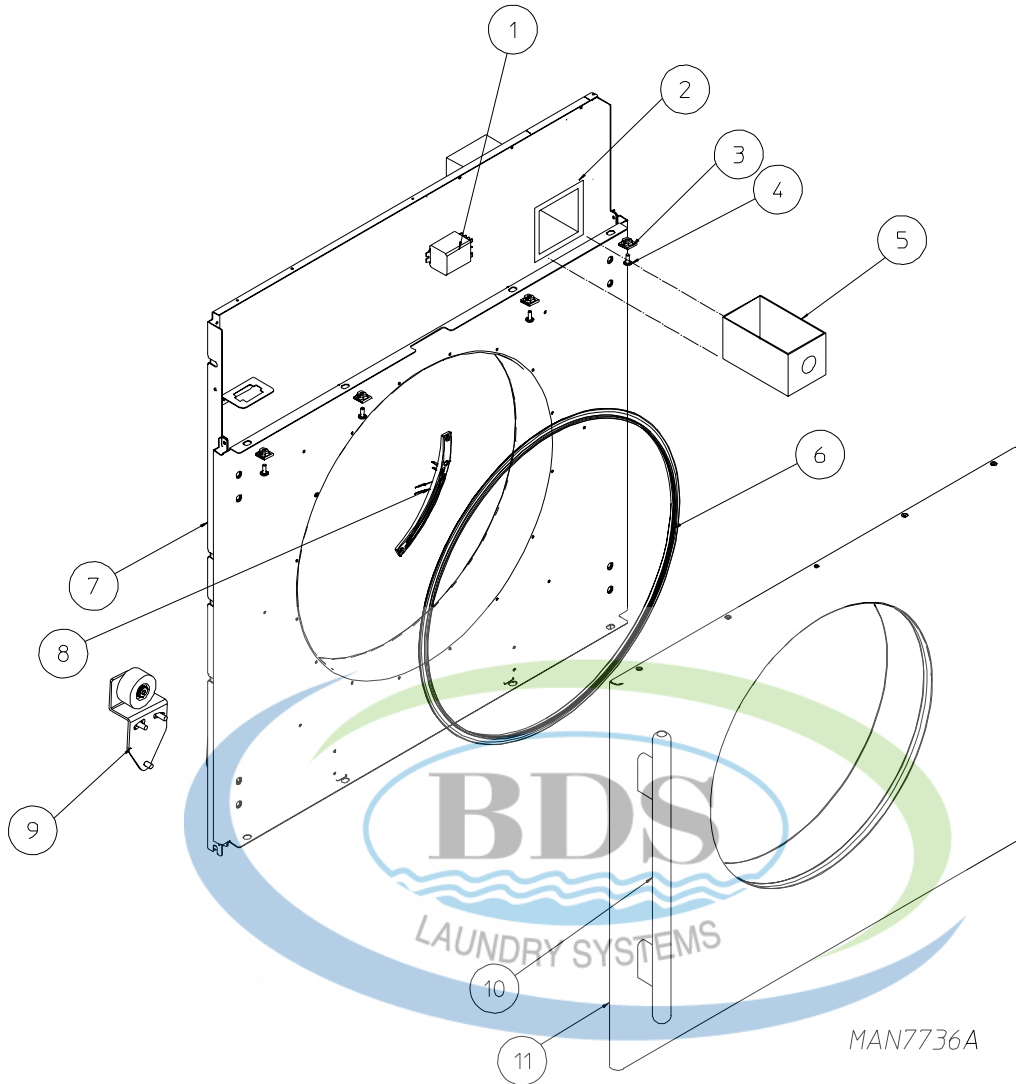
MAN7725

Illus. No.	Part No.	Qty.	Description
1	320724	1	Upper Back Guard
	320716	1	Lower Back Guard
	816238	1	Exhaust Transition
2	801348	1	Left Side Assembly
3	801346	1	Right Side Assembly
4	801349	1	Outer Top
5	115910	1	Rear Tumbler Felt
6	153064	2	1/4-20 x 1/2" Socket Head Cap Screw
7	185426	1	Backup Washer Two Screw
8	153048	2	Friction Pad
9	354217	1	Spacer Plate
10	185240	1	Tumbler Shaft
11	102407	1	Autotension Belt
12	150123	3	1/4-20 x 1/4" Allen Bolt
13	115906	1	Front Tumbler Felt
14	815175	1	Galvanized Tumbler Assembly
	815176	1	Stainless Steel Tumbler Assembly
15	828401	1	Lint Screen Assembly (Black)

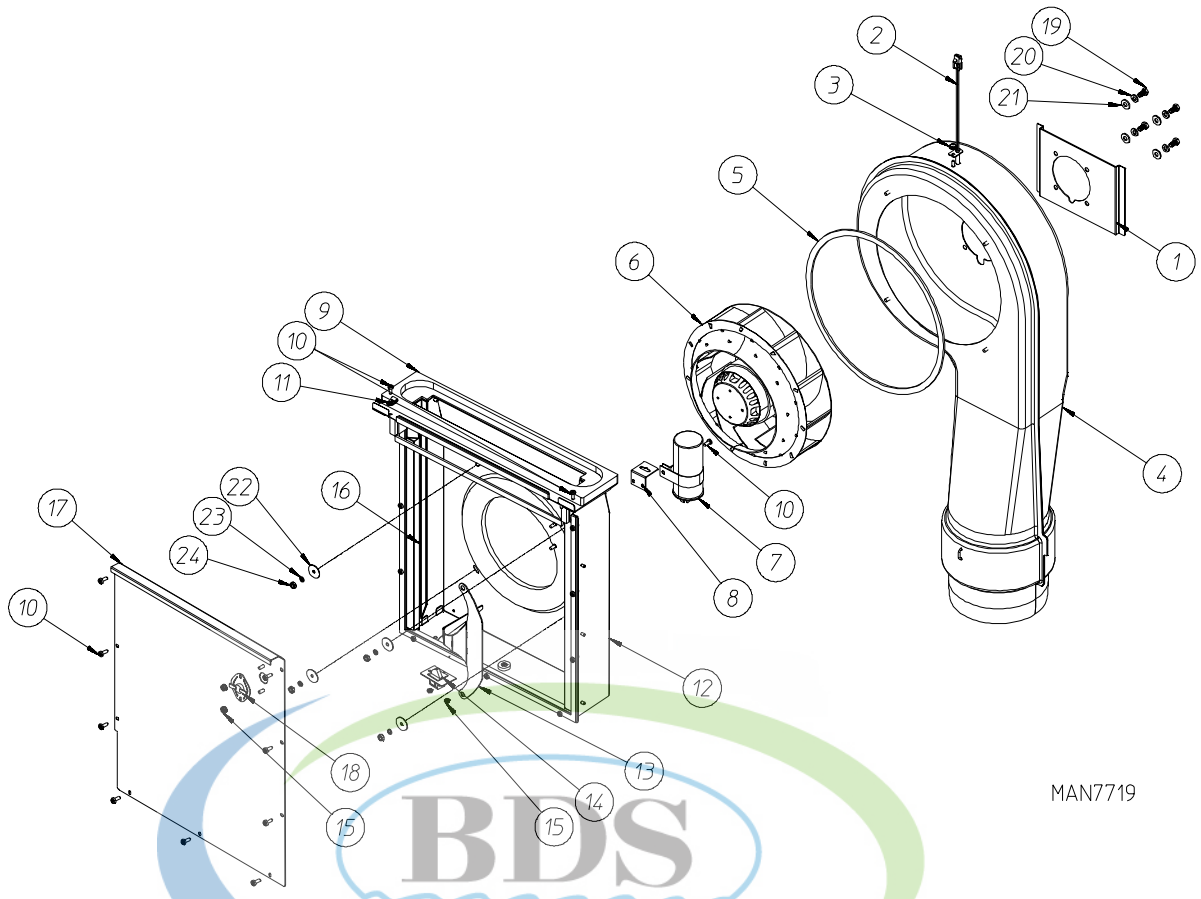


Illus. No.	Part No.	Qty.	Description
1	828384*	1	Top Trim Panel Assembly (White)
2	819196	1	Door Switch Assembly
3	814684*	1	Phase 8 Control Door
	828396*	1	Phase 8 Control Door Assembly (25¢ Coin) (includes illus. nos. 3 and 5 through 14)
	801591*	1	Phase 8 Control Door Assembly (Non-Coin) (includes illus. nos. 3, 6, 8, 9, and 10 through 14)
4	185097	1	Toe Panel (White)
	185048	1	Toe Panel (Stainless Steel)
5	818213	1	Coin Acceptor Assembly (25¢ Coin)
	819807	1	Optic Switch Assembly
6	112605	1	Keypad (Coin)
	112586	2	Keypad (Non-Coin)
7	160071	1	Lock
8	318929	1	Control Panel Left Hinge
9	150329	2	3/8" Phillips Head Screw
10	828395	1	Control Board Mount Assembly
11	819196	1	Door Switch Assembly
12	318930	1	Control Panel Right Hinge
13	884478	1	Phase 8 Computer
	136116	1	3-amp "Glass" Fuse
	136056	2	15-amp "Ceramic" Fuse
14	319009	1	Phase 8 Control Cover

* Specify color when ordering.

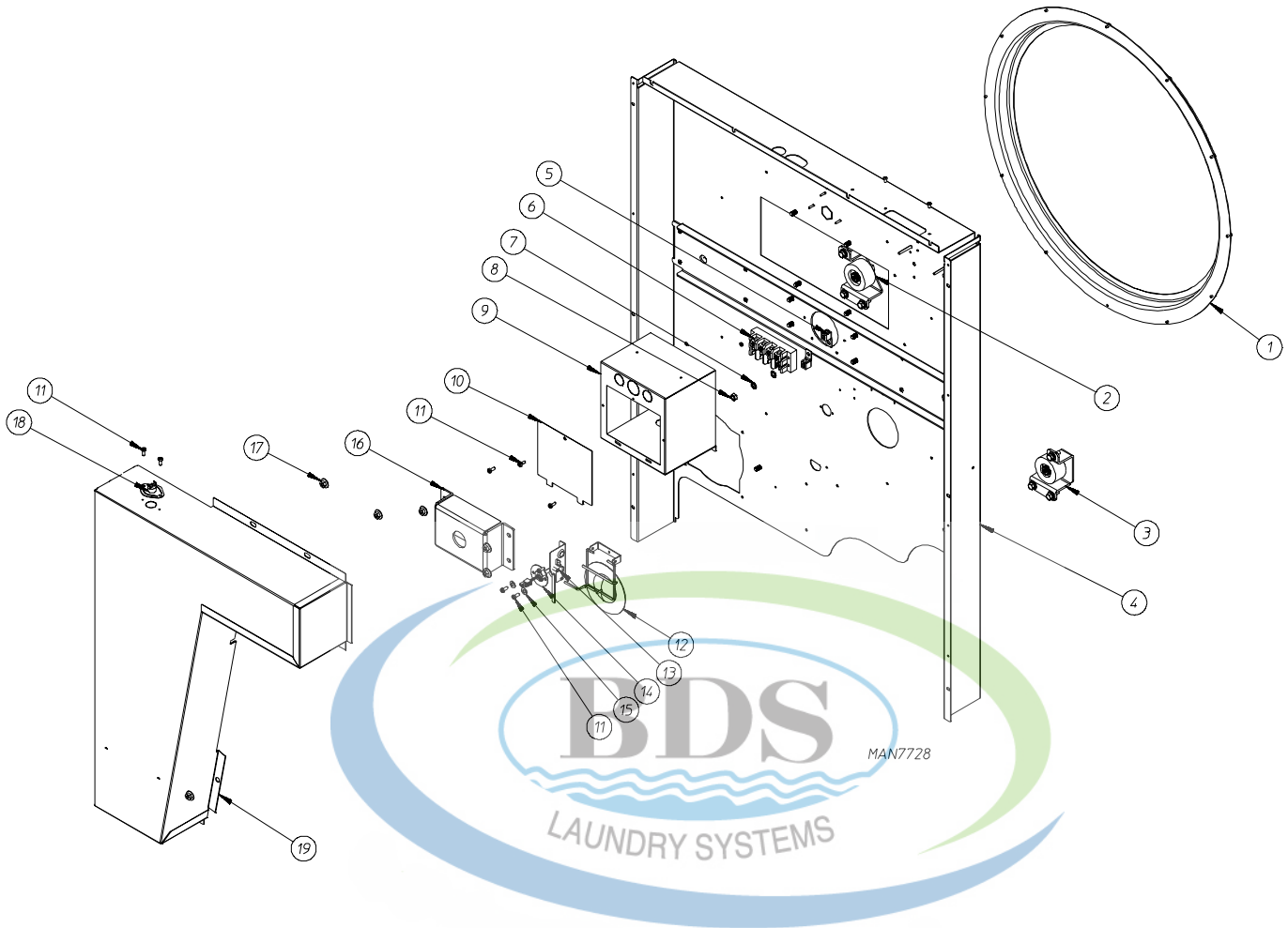


Illus. No.	Part No.	Qty.	Description
1	131819	1	120V 25a Reversing Relay
2	819227	1	Coin Vault Assembly
3	154065	8	U-Style Clip on Nut
4	154364	4	#10-16 x 1/2" Phillips Stainless Steel Screw
5	125916	1	Coin Box
6	102396	1	Door Gasket
7	829080	1	Front Panel Assembly without Auto Cycle
	828165	1	Front Support Panel Assembly with Auto Cycle
8	819805	1	Moisture Control Sensor
9	818183	1	Front Right Wheel Assembly (refer to Wheel Assembly on page 10)
	818184	1	Front Left Wheel Assembly (refer to Wheel Assembly on page 10)
10	185183	1	Door Handle
	185182	2	Standoff for Door Handle
11	816197	1	Door Assembly Hinge Right Cold Rolled Steel (painted)
	816220	1	Door Assembly Hinge Right Stainless Steel Models

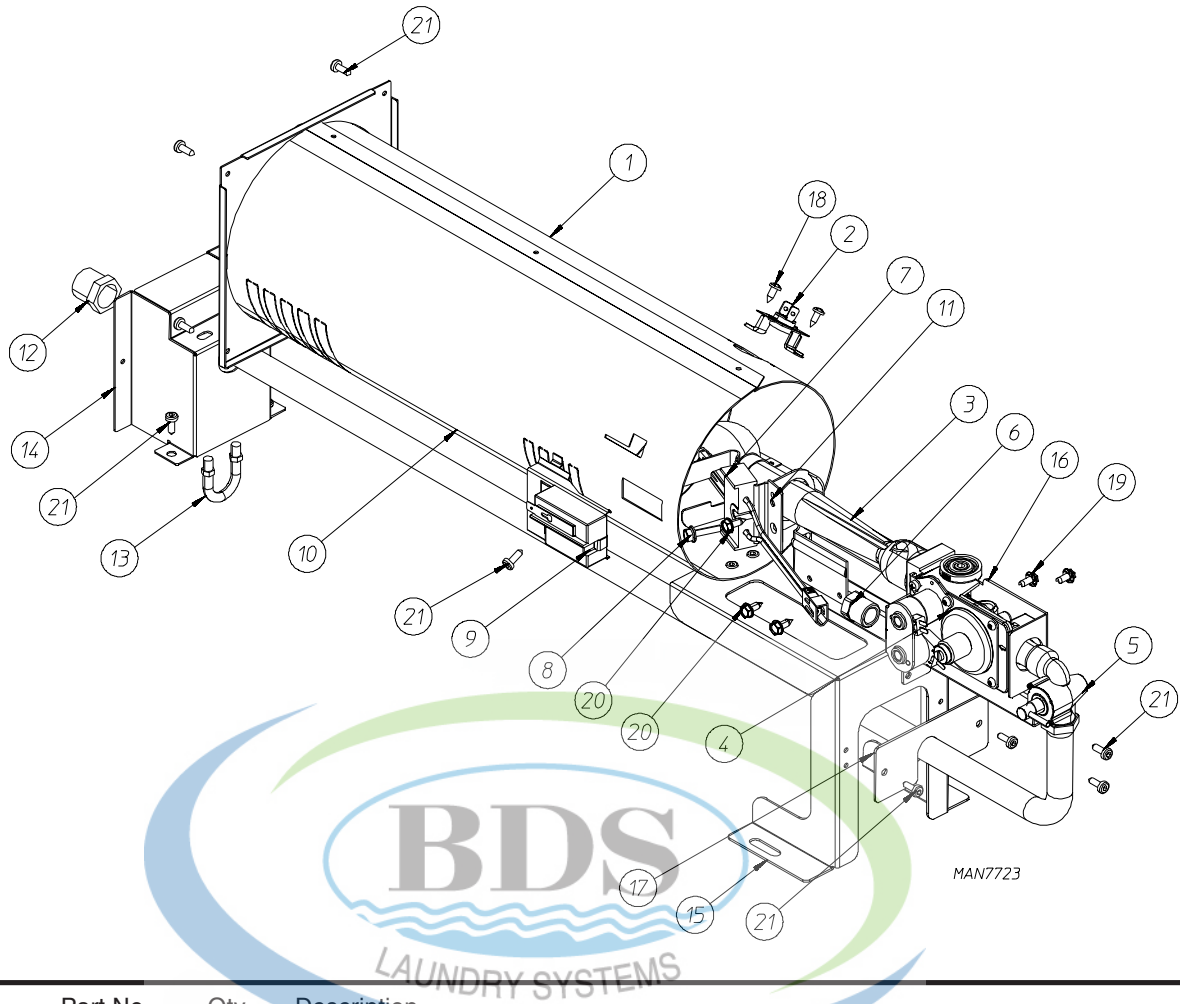


MAN7719

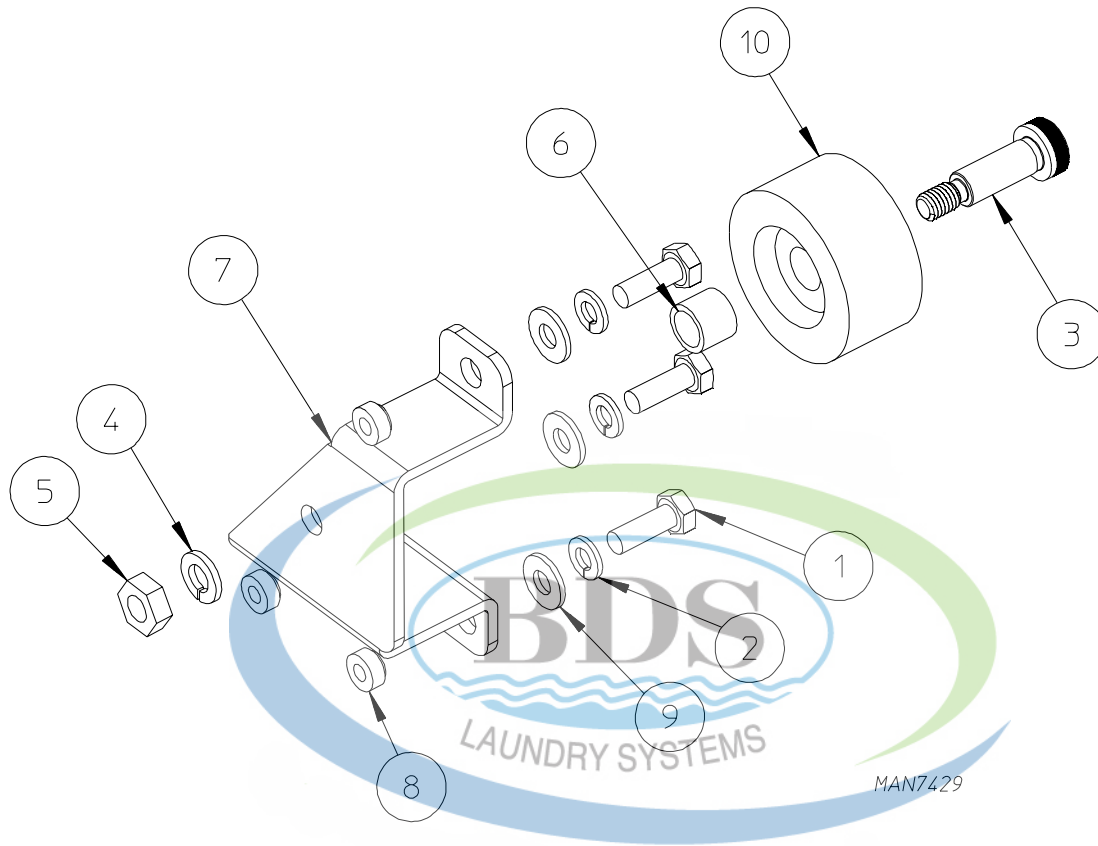
Illus. No.	Part No.	Qty.	Description
1	185340	1	Blower Housing Mount
2	830333	1	Phase 8 Exhaust Sensor
3	151000	1	#6-32 Pal Nut
4	185084	1	Blower Housing Assembly
5	117604	2	1/8" Thk x 3/8" W Sponge Gasket
6	887191	1	115V Motorized Impellor
7	100683	1	20mfd 440V Capacitor
8	185431	1	Lint Box Wire Support
9	102368	1	Lint Gasket
10	150331	12	#8-18 x 1/2" T20 TORX®
11	121519	1	Cable Clamp 3/8" x 0.05 x 0.125 ID
12	801375	1	120V Lint Box Housing
13	333717	1	Lint Blades Straight
14	122002	1	Spst Door Switch, 5a 250 VAC
15	153073	4	#8-32 Keps Nut Steel
16	185215	1	Right Lint Rail
	185216	1	Left Lint Rail
17	819419	1	Lint Box Top Assembly
18	130119	1	L190 Temp Sensor
19	150691	4	Bolt 6 x 12mm
20	153007	4	1/4" Split Lock Washer
21	153018	4	1/4" Flat Washer
22	153049	4	0.203 ID x 0.875 OD x 0.040 Washer
23	153024	4	#10 Split Lock Washer
24	152008	4	#10-32 Hex Nut



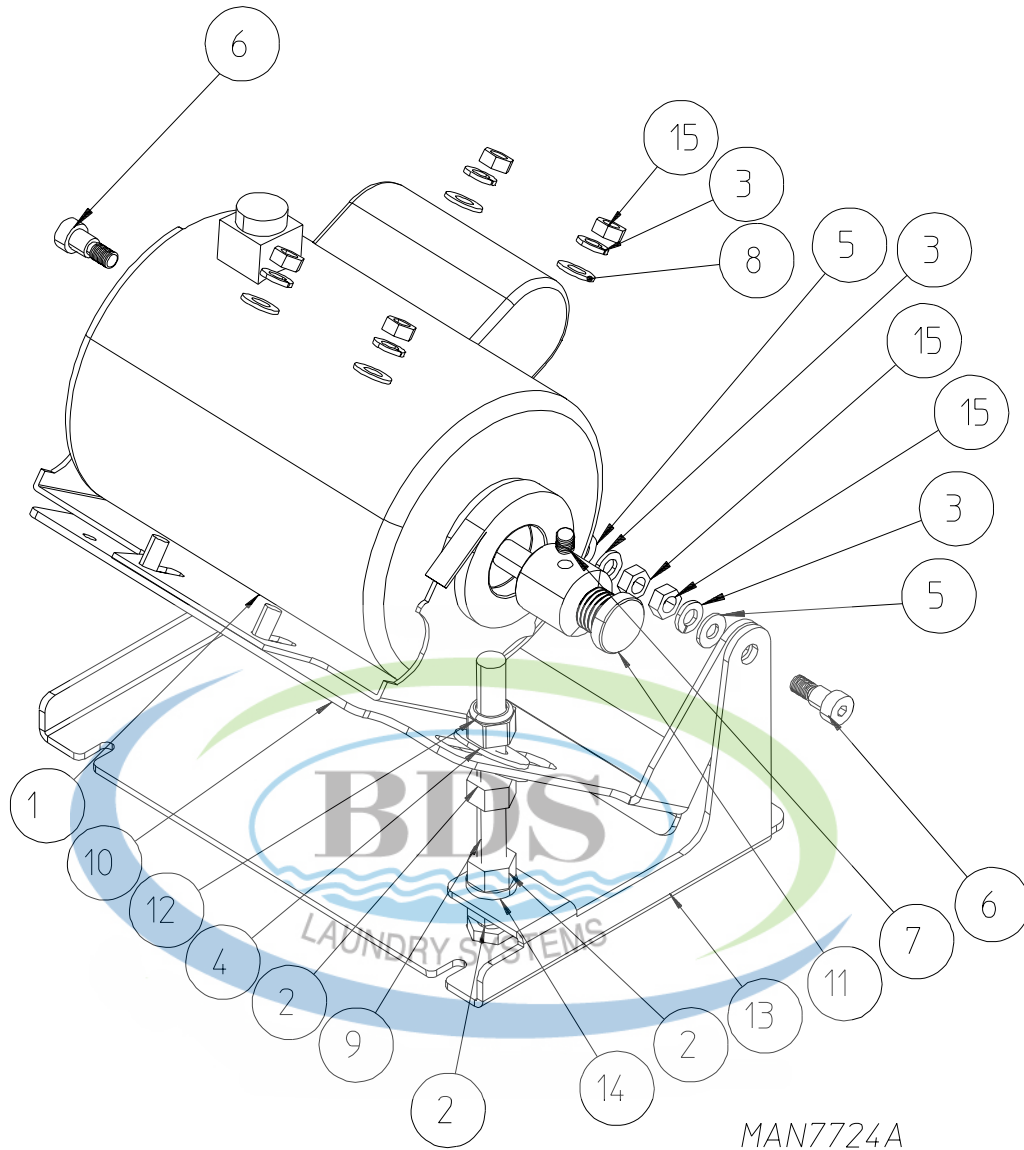
Illus. No.	Part No.	Qty.	Description
1	185650	1	Rear Bulkhead
2	818110	1	Rear Left Roller Wheel
3	818109	1	Rear Right Roller Wheel Assembly
4	801369	1	Rear Support Panel Stud Assembly
5	121010	2	14-4 Terminal Lug
6	120728	1	Quick-Conn Term Block 4 Pole
7	153021	2	1/4" Ext/Int Shakeproof Washer
8	152002	1	1/4-20 Hex Nut
9	307088	1	Rear Electrical Box
10	185467	1	Electrical Cover
11	150331	7	#8-18 x 1/2" T20 TORX®
12	828238	1	Linkageless Sail Switch Assembly
13	150303	2	#4 x 3/4" Pan Head "A" Machine Screw
14	819188	1	F.S.S. Temp Sensor
15	153022	2	#10 Flat Washer
16	315434	1	Thrust Bearing Box
17	152014	6	1/4-20 Serrated Hex Flange Nut
18	183112	1	High-Limit Thermo
19	815128	1	Heat Duct



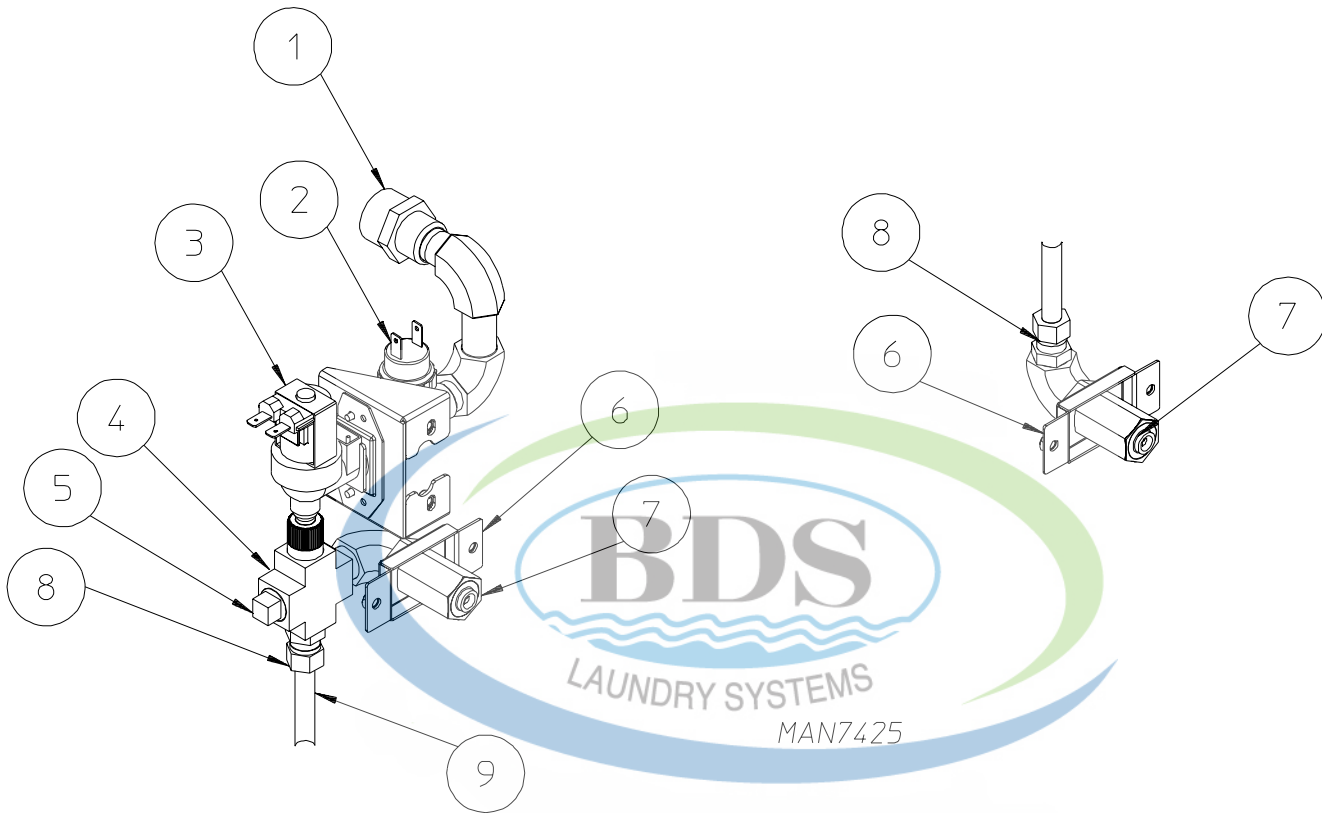
Illus. No.	Part No.	Qty.	Description
1	819164	1	Burner Tube
2	183112	1	Thermostat, Gas High-Limit
3	183144	1	Inshot Burner Tube, Hot Surface Ignition
4	128981	1	Hi Capacity Gas Valve
5	141318	1	3/8" 90° Union Shutoff
6	140888	1	Natural Gas Burner Orifice #23
	140876	1	Liquid Propane Gas Burner Orifice #42
	884448	1	MLG35 Liquid Propane Conversion Kit
7	128910	1	Globar®
8	183145	1	#8-32 x 7/8" Hex Screw with Washer
9	130500	1	Radiant Control
10	141262	1	3/8" N.P.T. Male 90° Gas Pipe
	142953	1	1/2" x 3/8" Reducer
11	185063	1	Igniter Bracket
12	142953	1	Steel Bushing 3/8" x 1/2"
13	154356	1	U-Bolt for 3/8" Pipe
14	185434	1	Gas Pipe Bracket
15	319332	1	Gas Train Support
16	307090	1	Gas Valve Bracket
17	307093	1	Gas Pipe Stabilizer
18	150301	2	Phillips Pan Head Screw
19	152209	2	Plated Tapping Screw
20	152208	3	Sheet Metal Screw
21	150331	13	T-20 Pan Head Screw



Illus. No.	Part No.	Qty.	Description
1	150510	3	1/4-20 x 3/4" Hex Head Machine Bolt
2	153007	3	1/4" Lock Washer
3	154267	1	M10 x 25mm Shoulder Screw
4	153002	1	5/16" Lock Washer
5	154013	1	M8 Hex Nut
6	154284	1	Tumbler Wheel Spacer
7	318233	1	Rear Right Roller Wheel Bracket
	318232	1	Rear Left Roller Wheel Bracket ... Not Illustrated
	318532	1	Front Right Wheel Bracket ... Not Illustrated
	318531	1	Front Left Wheel Bracket ... Not Illustrated
8	153564	3	1/4-20" Clinch Nut
9	153018	3	1/4" Flat Washer
10	180050	1	Wheel



Illus. No.	Part No.	Qty.	Description
1	887196	1	Motor 3 Rib Tumbler with Sheave 60 Hz
2	152011	3	1/2-13 Hex Nut
3	153002	6	5/16" Lock Washer
4	153011	2	9/16" ID Flat Washer
5	153018	2	1/4" Flat Washer
6	154266	2	3/8" x 3/8" (Shoulder Screw)
7	154321	1	5/16-24 x 3/8" Alan Setscrew
8	153001	4	5/16" Flat Washer
9	150616	1	1/2-13 x 5-1/2" Tap Bolt
10	819710	1	Motor Mount Stud Assembly
11	319933	1	45 RPM Tumbler Sheave
12	152028	1	1/2-13 Nylon Insert Locknut
13	319266	1	Motor Mount Base Plate
14	153026	1	1/2" Std Lock Washer
15	152004	6	5/16-18 Hex Nut



<u>Illus. No.</u>	<u>Part No.</u>	<u>Qty.</u>	<u>Description</u>
1	143025	1	Nylon Hose Adaptor
2	136987	1	Pressure Switch
3	165120	1	Water Valve
4	143236	1	3/8" Brass Cross
5	143251	1	3/8" Plug
6	318422	1	Sensor Activated Fire Extinguishing System Bracket
7	143581	1	Spray Nozzle
8	143208	1	3/8" Brass Connector
9	143099	1	3/8" OD Copper Tubing



