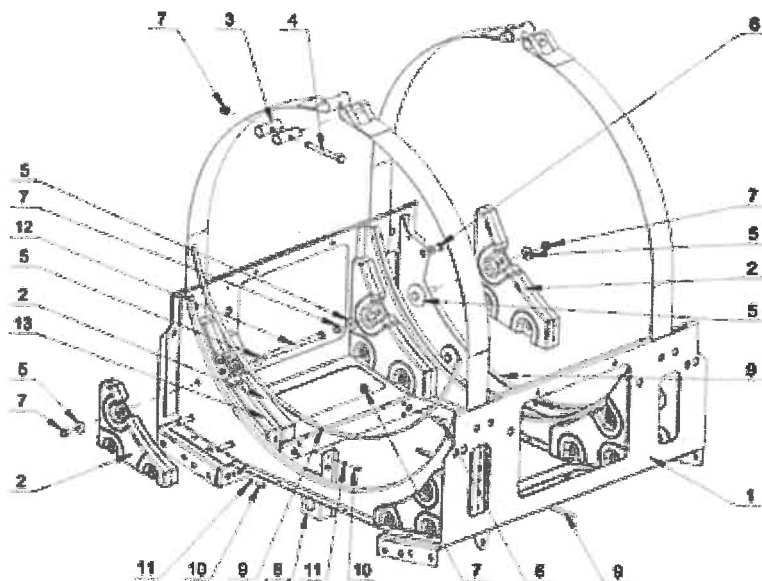


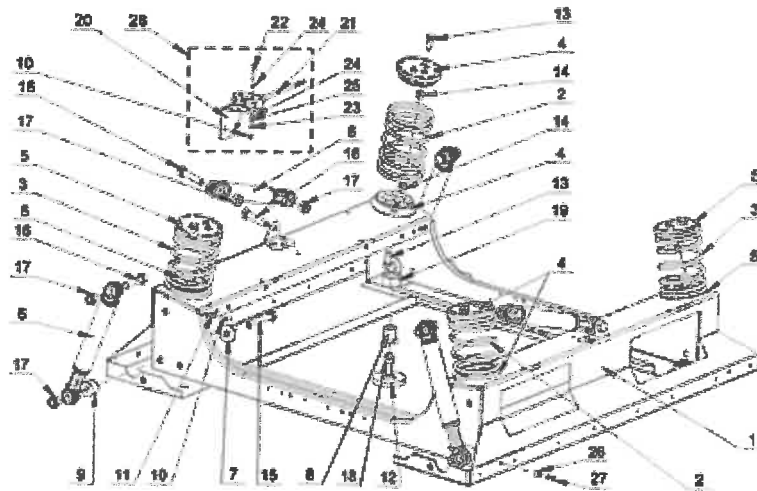
UPPER FRAME PARTS



Ref #	Part #	Description	Qty	Context	Note	Foot	Note	MSRP
1	W10711693	UPPER FRAME						494.63
2	W10711698	4.50KG WEIGHT						40.15
3	W10711702	COVER STRIP PIN						7.98
4	W10711703	BOLT M8X100						7.60
5	W10711704	WASHER M8						5.95
6	23002475	BOLT M8X20						7.07
7	23001607	NUT M8						0.81
8	W10711706	DETECTOR, OUT OF BALANCE						23.07
9	W10711718	SELF-ADHESIVE FOAM SEAL						11.31
10	23002398	BOLT M4X16						6.17
11	23002950	WASHER, LOCK M4						6.09
12	W10711729	BOLT M8X130						8.86
13	W10711727	12.25KG WEIGHT						94.50

MXS40PDATS - 03 - LOWER FRAME PARTS

LOWER FRAME PARTS



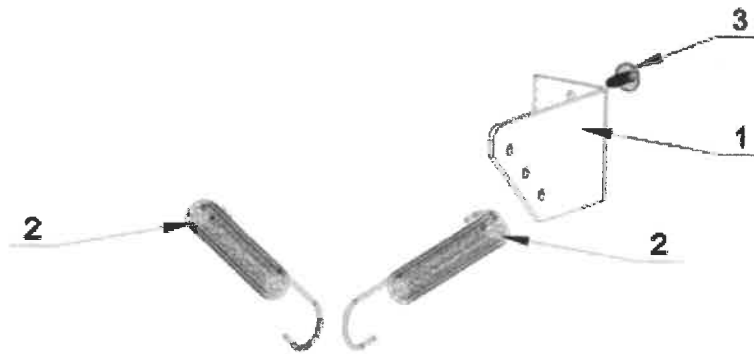
07/17/2017

4

Part No. W10785072 Rev. B

Ref #	Part #	Description	Qty	Context	Note	Foot	Note	MSRP
1	W10711733	LOWER FRAME						454.80
2	W10711740	SPRING (LEFT FRONT, RIGHT REAR)						30.50
3	W10711752	SPRING (RIGHT FRONT, LEFT REAR)						32.93
4	W10711756	SPRING HOLDER (LEFT FRONT, RIGHT REAR)						16.79
5	W10711760	SPRING HOLDER (RIGHT FRONT, LEFT REAR)						16.79
6	W10711763	DAMPER						53.50
7	23004023	WASHER M10						4.20
8	W10711766	THREADED JOINT						20.33
9	W10711768	ROLLER						16.45
10	23002398	BOLT M4X16						6.17
11	23002950	WASHER, LOCK M4						6.09
12	23003458	WASHER FOOT						21.24
13	23002475	BOLT M8X20						7.07
14	23001607	NUT M8						0.81
15	W10711778	BOLT M10X60						7.26
16	W10286257	BOLT M10X50						6.84
17	23001241	NUT M10						6.78
18	23001661	NUT M10						7.57
19	23003935	NUT M20						4.20
20	W10711782	HOLDER, OUT OF BALANCE SWITCH						15.25
21	W10711785	OUT OF BALANCE SWITCH						90.47
22	W10711786	BOLT M3X25						44.87
23	23002958	NUT M3						4.55
24	23003654	WASHER M3.2						7.50
25	23002865	WASHER, LOCK M4						4.00
26	W10711787	INSERT, RIVET						25.87
27	W10711789	RIVET W/CRANK (4X16)						6.29
28	W10711791	OUT OF BALANCE SWITCH - COMPLETE						105.55

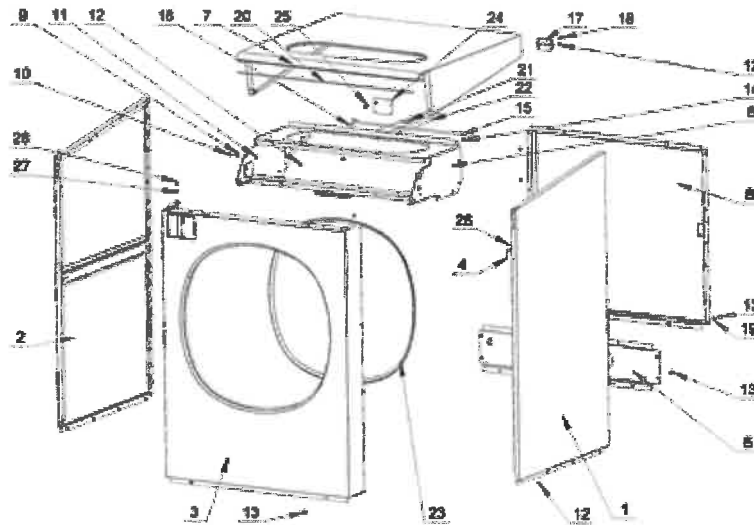
STABILIZING SPRING PARTS



Ref #	Part #	Description	Qty	Context Note	Foot Note	MSRP
1	W10711796	SPRING HOLDER - REAR				23.13
2	W10711799	SPRING				42.50
3	W10711800	SCREW M4X11				12.34

MXS40PDATS - 05 - CABINET PARTS

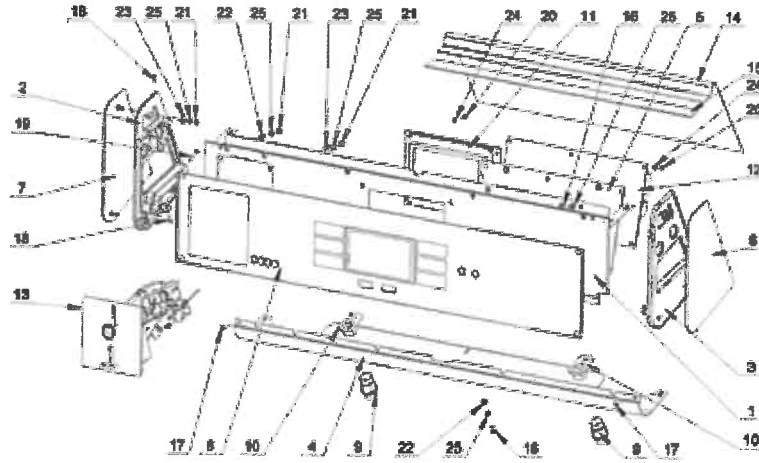
CABINET PARTS



Ref #	Part #	Description	Qty	Context Note	Foot Note	MSRP
1	W10712098	SIDE PANEL - RIGHT (PAINTED)				361.30
1A	W10712099	SIDE PANEL - RIGHT (STAINLESS)				379.08
2	W10712113	SIDE PANEL - LEFT (PAINTED)				362.64
2B	W10712115	SIDE PANEL - LEFT (STAINLESS)				372.82
3	W10712131	FRONT PANEL - COMPLETE (PD)				738.79
4	W10712182	BOLT M4X25				6.07
5	W10712142	REAR COVER - LOWER, COMPLETE				67.84
6	W10712147	PANEL HOLDER - COMPLETE				172.69
7	W10712153	TOP COVER - COMPLETE				594.54
8	W10712160	REAR COVER				168.96
9	23003012	WASHER M6				6.66
10	W10712161	BOLT M6X12				0.60
11	23001310	NUT M6				6.71
12	W10712162	BOLT M6X16				10.16
13	W10712163	BOLT M6X16				14.70
14	23002167	GROMMET, RUBBER				4.00
15	W10712164	PROP ROD				9.02
16	23002454	SELF STICKING CABLE CLIP				6.94
17	23004103	HINGE				15.27
18	W10712165	RIVET W/CRANK (8X8)				7.24
19	23002424	WASHER M6.4				4.33
20	W10286261	FOAM-SEAL				10.25
21	W10712181	VELCRO FASTENER				11.47
22	W10712178	BRACKET, TOP COVER (REINFORCEMENT)				36.42
23	W10712169	EDGE PROTECTION				44.84
24	W10712170	AUTO-UNLOCK MODULE				425.25
25	23001099	PC BOARD SOCKET				7.50
26	23002950	WASHER, LOCK M4				6.09
27	W10711787	INSERT, RIVET				25.87
28	W10711789	RIVET W/CRANK (4X16)				6.29
NI	N/P	FOLLOWING PARTS NOT ILLUSTRATED				0.00
NI	W10712183	WIRING HARNESS, AUTO-UNLOCK MODULE				36.88
NI	W10712243	PARTS FOR MAYTAG CONNECT 360 (BOLT M4X12)				6.88
NI	23003666	PARTS FOR MAYTAG CONNECT 360 (NUT M4)				4.55

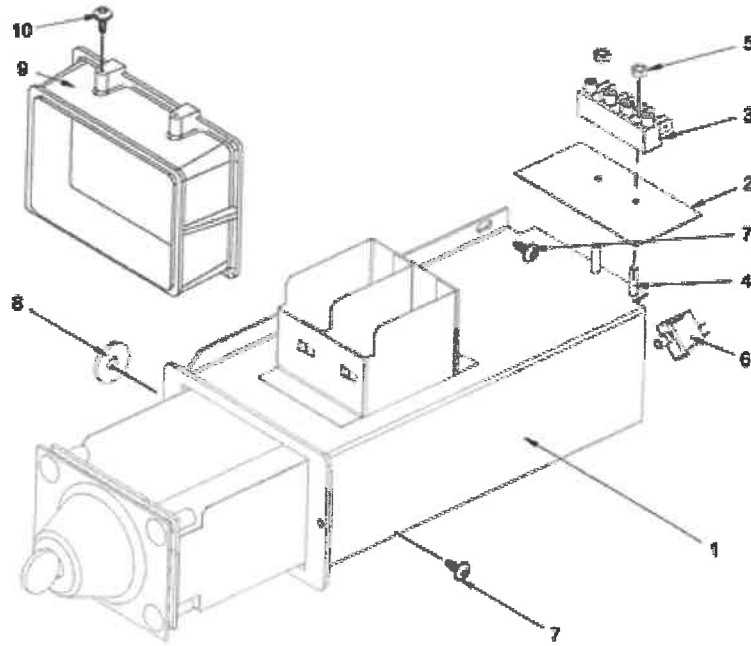
MXS40PDATS - 06 - CONTROL PANEL PARTS

CONTROL PANEL PARTS



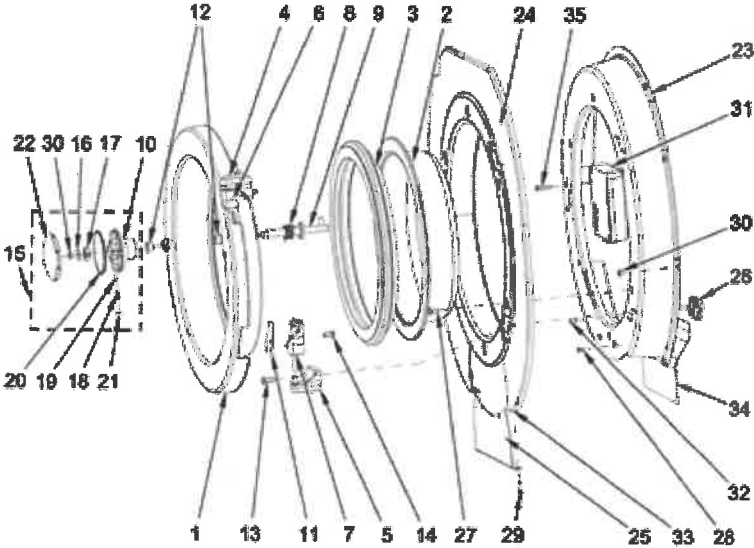
Ref #	Part #	Description	Qty	Context	Note	Foot Note	MSRP
1	W10712206	CONTROL PANEL BRACKET					135.35
2	W10712210	SIDEBOARD - LEFT (PAINTED)					92.32
3	W10712211	SIDEBOARD - RIGHT (PAINTED)					92.31
4	W10712214	LOWER TRIM					109.40
5	W10712217	CONTROL BOARD BRACKET					37.91
6	W10712218	SIDEBOARD PANEL - RIGHT (STAINLESS)					40.64
7	W10712219	SIDEBOARD PANEL - LEFT (STAINLESS)					37.91
8	W11110171	USER INTERFACE FACIA/KEYPAD MC7 (PD)					10.85
9	W10712231	LOCK					39.25
NI	N/P	(PARTS NOT SHOWN)					0.00
NI	W10761049	KEY					25.22
10	23001009	HOOK, LOCK					12.79
11	W10712233	DISPLAY BOARD - CPU					1,163.05
12	W10712234	MAIN CONTROL BOARD MC7					1,055.20
13	W10712245	COIN DROP (.25 CENT)					331.09
14	23002877	SHIELD, RAIN					11.09
15	23004126	DOUBLE-SIDED TAPE					45.59
16	W10712243	BOLT M4X12					6.88
17	23001468	BOLT M3X12					6.48
18	23004061	SCREW M3X8					4.20
19	23002719	BOLT M3 X 20					4.20
20	23002869	BOLT M3X6					3.40
21	23003666	NUT M4					4.55
22	23002438	WASHER M4.3					7.43
23	23001545	WASHER M4					4.20
24	23002865	WASHER, LOCK M4					4.00
25	23002950	WASHER, LOCK M4					6.09
NI	N/P	FOLLOWING PARTS NOT ILLUSTRATED					0.00
NI	W10712236	WIRING HARNESS, MAIN CONTROL TO DISPLAY BOARD					41.24
NI	W10286299	EMERGENCY STOP INTERCONNECTION					9.67

COIN VAULT PARTS



Ref #	Part #	Description	Qty	Context Note	Foot Note	MSRP
1	W10714944	COIN VAULT				112.80
2	23001115	TERMINAL BLOCK INSULATION				6.48
3	23001113	TERMINAL BLOCK				8.75
4	23004095	BOLT M4X16				6.28
5	23003666	NUT M4				4.55
6	23003656	SWITCH, COIN BOX				51.20
7	W10711800	SCREW M4X11				12.34
8	W10431220	WASHER				6.68
9	W10712166	VAULT BEZEL				88.37
10	23003114	BOLT M4X8				4.20

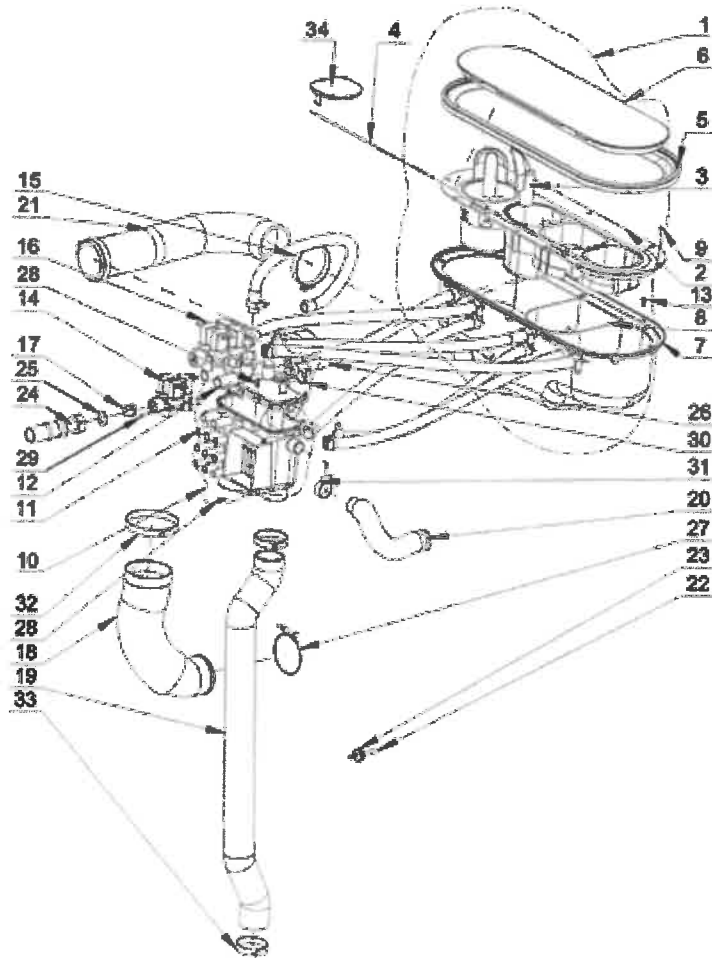
DOOR PARTS



Ref #	Part #	Description	Qty	Context Note	Foot Note	MSRP
1	W10712297	DOOR (GREY)				515.83
2	W10712301	DOOR GLASS				341.21
3	W10712305	DOOR SEAL				22.97
4	W10712306	UPPER HINGE - FIXED				14.93
5	W10712307	LOWER HINGE - FIXED				14.93
6	W10712308	UPPER HINGE				43.88
7	W10712309	LOWER HINGE				43.89
8	W10712314	TORSION SPRING, HANDLE				16.77
9	W10712315	LOCK SHAFT, HANDLE				61.83
10	W10712316	INNER, HANDLE				49.30
11	W10712317	WASHER, HINGE				15.93
12	W10712318	CASING, LOCK SHAFT				19.52
13	W10712319	BOLT M6X25				11.69
14	W10712320	BOLT M6X16				9.33
15	W10712375	HANDLE COMPLETE				167.15
16	23003012	WASHER M6				6.66
17	W10712323	LOCATING SEGMENT, HANDLE				13.16
18	W10712328	COMPRESSION SPRING, HANDLE				7.61
19	W10712344	HANDLE BALL				9.73
20	W10712345	DISTINGUISHING RING (BLUE)				11.69
20A	W10712346	DISTINGUISHING RING (RED)				8.14
21	W10712347	BOLT M6X6				5.95
22	W10712351	COVER, HANDLE				9.86
23	W10712358	DOOR AND LOCK HOLDER COMPLETE				256.06
24	W10757826	FRONT PANEL				225.00
25	W10712364	FRONT COVER OF HEATING ELEMENT				43.90
26	W10712366	HINGE SUPPORT				33.23
27	W10712367	BOLT M6X14				8.52
28	W10712368	PLASTIC PLUG				6.34
29	23002398	BOLT M4X16				6.17
30	23001310	NUT M6				6.71
31	W10712373	DOOR LOCK				420.76
32	23002408	RIVET W/CRANK (4X12.5)				4.20
33	23004093	RIVET BLIND NUT M4				6.96
34	W10712369	PLASTIC DRIP SHIELD				16.06
35	W10712370	BOLT M5X25				6.43
NI	N/P	FOLLOWING PARTS NOT ILLUSTRATED				0.00
NI	W10712376	WIRING HARNESS, DOOR LOCK				49.02

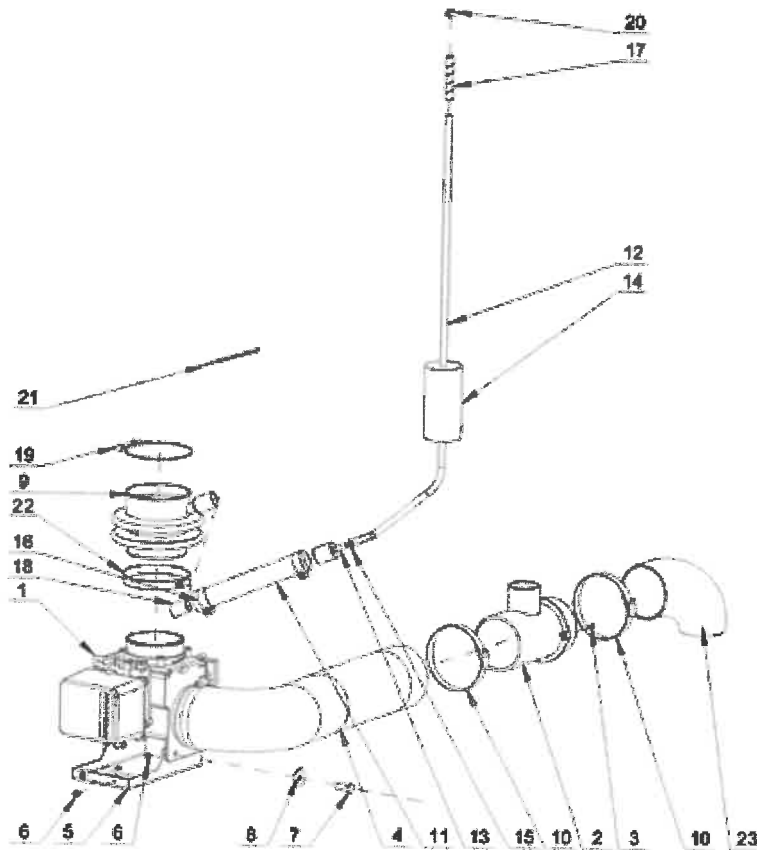
MXS40PDATS - 09 - WATER INLET PARTS

WATER INLET PARTS



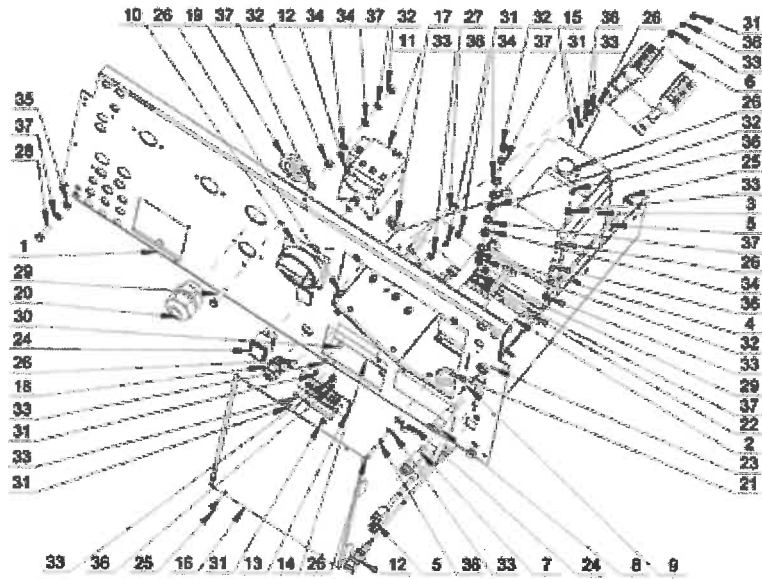
Ref #	Part #	Description	Qty	Context Note	Foot Note	MSRP
1	W10712625	SOAP HOPPER COMPLETE				0.00
2	W10712626	CHEMICAL DISPENSER INSERT				102.79
3	W10712627	SIPHON				24.99
4	W10712628	PIN, HINGE				11.12
5	W10712629	DISPENSER SEAL				55.74
6	W10712630	DISPENSER LID				52.65
7	W10712635	CHEMICAL DISPENSER BASE				91.45
8	W10712638	SOAP HOPPER INSERT SECONDARY				25.08
9	23003782	SCREW				6.28
10	W10712640	MIXER - COMPLETE				70.96
11	W10712642	MIXER BODY				37.14
12	W10712644	MIXER LID				30.31
13	W10711800	SCREW M4X11				12.34
14	W10712646	THREE-WAY VALVE - COMPLETE (3/4")				296.41
15	23001256	HOSE CLAMP (60-80)				3.94
16	W10712721	FOUR-WAY VALVE - COMPLETE (3/4")				169.85
17	23002922	FILTER SCREEN				18.31
18	W10712649	FILLING HOSE (MIXER TO TUB)				54.90
19	W10712663	HOSE, OVERFLOW				64.05
20	W10712699	HOSE, VENT				32.24
21	W10712711	DISPENSER ELBOW - HOSE				74.95
22	23003964	TEMPERATURE SENSOR				176.24
23	W10712713	SEAL RING, TEMPERATURE SENSOR				11.65
24	23001523	HOSE, CONNECTION				234.95
25	23002921	WASHER, FILL HOSE				4.28
26	23001507	HOSE, INLET				35.50
27	W10712716	HOSE CLAMP (62-70)				13.62
28	W10712718	BOLT M4X12				6.34
29	23002398	BOLT M4X16				6.17
30	23001506	HOSE CLAMP (12-22)				4.33
31	23001262	HOSE CLAMP (20-32)				3.97
32	23001258	HOSE CLAMP (70-90)				4.11
33	23001750	HOSE CLAMP (40-60)				10.23
NI	N/P	FOLLOWING PARTS OPTIONAL				0.00
34	W10734787	BLOCK-OFF, DISPENSER CAVITY				44.82

DRAIN SYSTEM PARTS



Ref #	Part #	Description	Qty	Context	Note	Foot	Note	MSRP
1	W10712775	DRAIN VALVE - COMPLETE						478.50
1A	W10712776	DRAIN VALVE (CHAMBER)						378.98
1B	W10357127	DRAIN VALVE (MOTOR ONLY)						214.50
2	W10712777	T-CONNECTOR						31.07
3	W10712718	BOLT M4X12						6.34
4	W10712790	DRAIN ELBOW						127.65
5	W10712796	DRAIN VALVE HOLDER - COMPLETE						59.89
6	W10711800	SCREW M4X11						12.34
7	23002475	BOLT M8X20						7.07
8	23002437	WASHER M8						4.20
9	W10712797	HOSE (TUB TO PUMP)						50.33
10	23001258	HOSE CLAMP (70-90)						4.11
11	23001246	LOWER HOSE, PRESSURE SWITCH						42.61
12	23001252	UPPER HOSE, PRESSURE SWITCH						77.31
13	23001260	PRESSURE SWITCH HOSE FITTING						9.85
14	23004491	LARGER BUMPER						13.16
15	23001257	CLAMP, CORBIN (A5.5)						4.33
16	23001262	HOSE CLAMP (20-32)						3.97
17	W10712803	HOSE PROTECTOR						84.56
18	W10712804	HOSE INSERT						12.08
19	W10712805	HOSE CLAMP (82-90)						4.11
20	W10712806	SPRING CLAMP						7.04
21	W10657139	WIRE TIE (130 X 2.6MM)						6.53
22	23001256	HOSE CLAMP (60-80)						3.94
23	23002015	DRAIN ELBOW						84.78

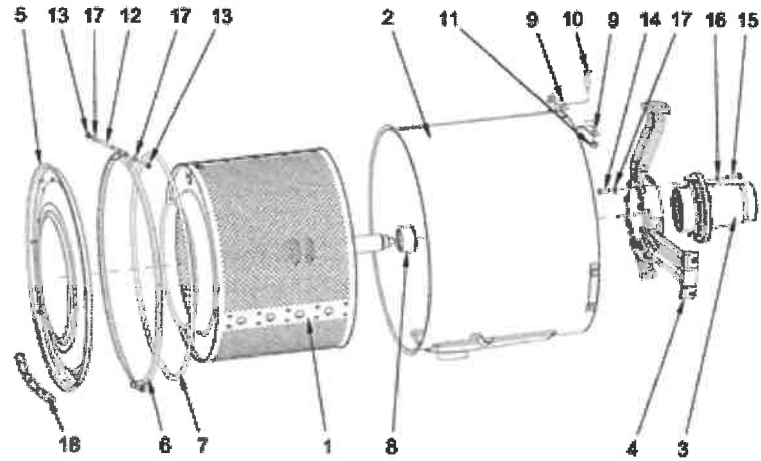
REAR PANEL PARTS



Ref #	Part #	Description	Qty	Context	Note	Foot Note	MSRP
1	W10713094	REAR PANEL - COMPLETE					195.99
2	23003750	CONTACTOR LC1 D09M7					72.80
3	W10415771	FREQUENCY INVERTER 1PHASE 240V					2,524.45
3A	W10713110	CABLE, COMMUNICATION					21.70
4	W10713115	RFI FILTER					122.19
5	W10713157	CABLE, USB - REAR PANEL CONNECTOR					98.99
6	W10286352	TRANSFORMER					148.63
7	23001462	FUSE HOLDER (5X20MM)					24.36
8	23002210	FUSE HOLDER (6X32MM)					36.31
9	23004315	FUSE 0.5A					1.96
9A	23003385	FUSE 1A 6X32					17.59
10	23003497	MAIN SWITCH KNOB					35.98
11	23003500	MAIN SWITCH 25A					129.14
12	W10713154	CABLE CONNECTOR, RS485					40.13
13	W10286355	LED BOARD MC5					115.65
13A	W10665044	CABLE, PUMP RELAY BOARD TO LED TERMINAL					29.96
14	W10713133	LIQUID DETERGENT BOX					11.85
15	W10713141	STRAP, INVERTER TRAY					17.17
16	W10713151	REAR PANEL LID					30.64
17	23004398	SMALL STRAIN RELIEF NUT M16					6.96
18	23004396	SMALL STRAIN RELIEF M16					8.00
19	23004495	LARGE STRAIN RELIEF NUT					7.82
20	23004494	LARGE STRAIN RELIEF					9.49
21	23001587	PROTECTION, RUBBER (15X2)					4.55
22	23001117	GROMMET, RUBBER					7.73
23	23002362	RIVET W/CRANK (4X7)					4.20
24	W10713152	CABLE CLAMP					6.33
25	W10711800	SCREW M4X11					12.34
26	23002398	BOLT M4X16					6.17
27	23004095	BOLT M4X16					6.28
28	23002462	BOLT M6X20					4.20
29	23002806	BOLT M6X25					17.05
30	23001682	BOLT M4X8					4.20
31	23003666	NUT M4					4.55
32	23002651	NUT M6					9.17
33	23002438	WASHER M4.3					7.43
34	23003767	WASHER M6.4					4.20
35	23002424	WASHER M6.4					4.33
36	23002400	WASHER M4					4.20
37	23002425	WASHER, LOCK M6					7.50

Ref #	Part #	Description	Qty	Context	Note	Foot Note	MSRP
NI	N/P	FOLLOWING PARTS NOT ILLUSTRATED					0.00
NI	W10713162	MAIN WIRING HARNESS					142.48
NI	W10713166	KIT, LIQUID SOAP SUPPLY CONNECTION					174.81

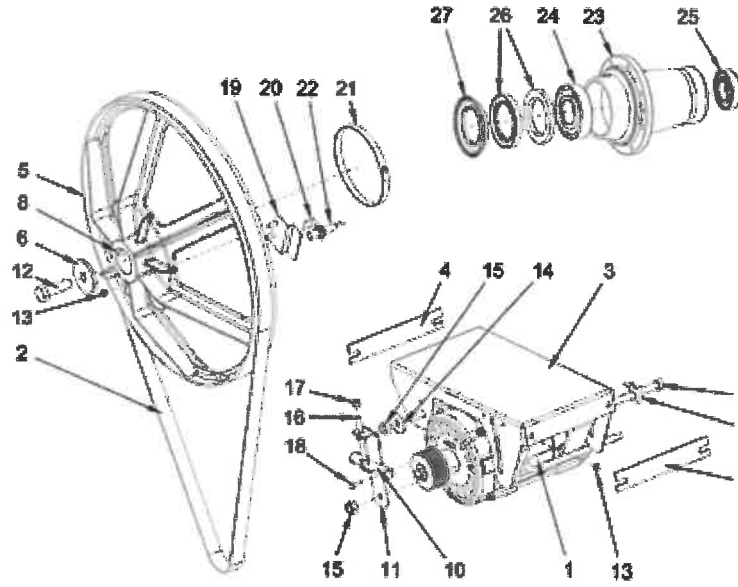
DRUM AND TUB PARTS



Ref #	Part #	Description	Qty	Context Note	Foot Note	MSRP
1	W10713380	INNER BASKET - COMPLETE				1,679.31
2	W10713390	OUTER TUB - COMPLETE				1,273.97
3	W10714050	TRUNNION - COMPLETE				976.41
4	W10713401	SUPPORT, TUB				718.92
5	W10713409	FRONT TUB PANEL - COMPLETE				403.68
6	W10713412	CLAMP - COMPLETE				93.43
7	W10713415	SEAL D10-2550MM				49.79
8	W10713946	SEALING SLEEVE				327.09
9	W10713949	BRACKET, CURVED				13.26
10	23004207	BOLT M12X50				4.20
11	W10357141	NUT M12				6.84
12	23002486	BOLT M8				13.53
13	23002487	NUT M8				4.20
14	23001202	BOLT M10X35				38.13
15	23001283	BOLT M12X35				7.90
16	23001292	WASHER M13				7.87
17	23001608	WASHER M8.4				7.47
18	23001594	HEATING ELEMENT HOLE PLUG				33.48

MXS40PDATS - 13 - DRIVE PARTS

DRIVE PARTS



Ref #	Part #	Description	Qty	Context	Note	Foot	Note	MSRP
1	W10760691	MOTOR WITH PULLEY (2.2KW/230V/75HZ)						3,030.83
2	W10713982	BELT						121.85
3	W10713990	MOTOR BRACKET						81.52
4	W10804910	MOTOR BRACKET SHIMS						8.58
5	W10713993	V-PULLEY DRUM						454.19
6	W10654354	MOTOR PULLEY WASHER						20.35
7	W10713995	LOCK, BOLT HEAD						15.68
8	W10804909	DRUM PULLEY KEY						9.53
9	W10713999	BOLT M12X220						26.44
10	W10714001	TENSIONING BRACKET - RIGID						18.36
11	W10714003	TENSIONING BRACKET - MOVABLE						21.79
12	23002278	BOLT M16X30						4.20
13	23001310	NUT M6						6.71
14	23004146	WASHER M12						4.20
15	W10357141	NUT M12						6.84
16	23004222	BOLT M8X70						4.20
17	23001266	NUT M8						6.19
18	23002461	BOLT M6X16						11.45
19	W10747778	PLATE, SPEED SENSOR						24.81
20	W10747779	BRACKET, SPEED SENSOR						14.11
21	W10748075	HOSE CLAMP (140-160)						10.99
22	W10747780	SPEED SENSOR						109.41
23	W10714016	BEARING HOUSING						492.30
24	23003076	BEARING (6312)						256.65
25	23003614	BEARING (6310)						170.21
26	23003850	RING SEAL 100X130X10						60.21
27	W10714026	RING SEAL 100X130/144X9/12						200.06