

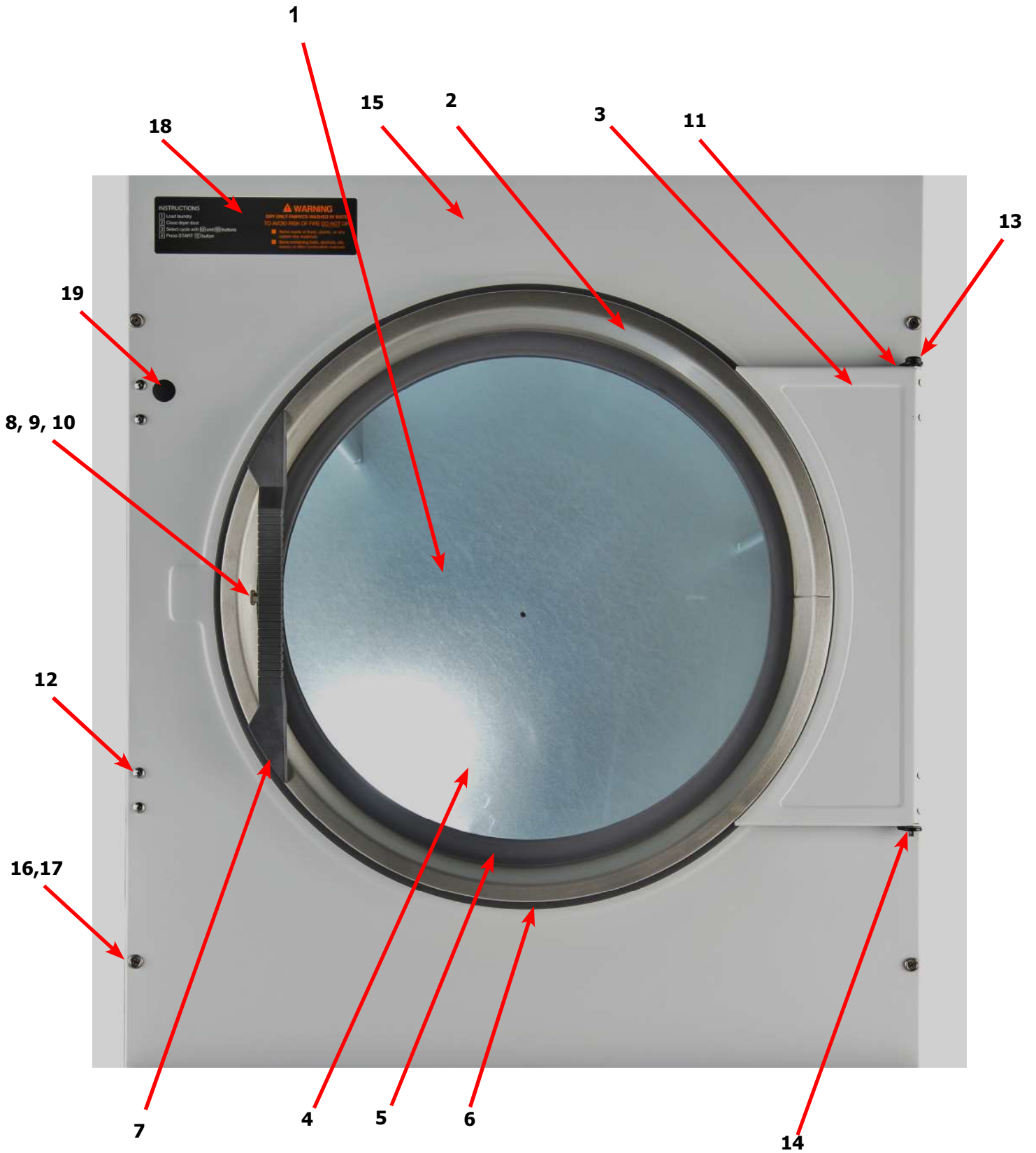


DCBD80HC_-10BD

Section 5: Dryer Parts Data

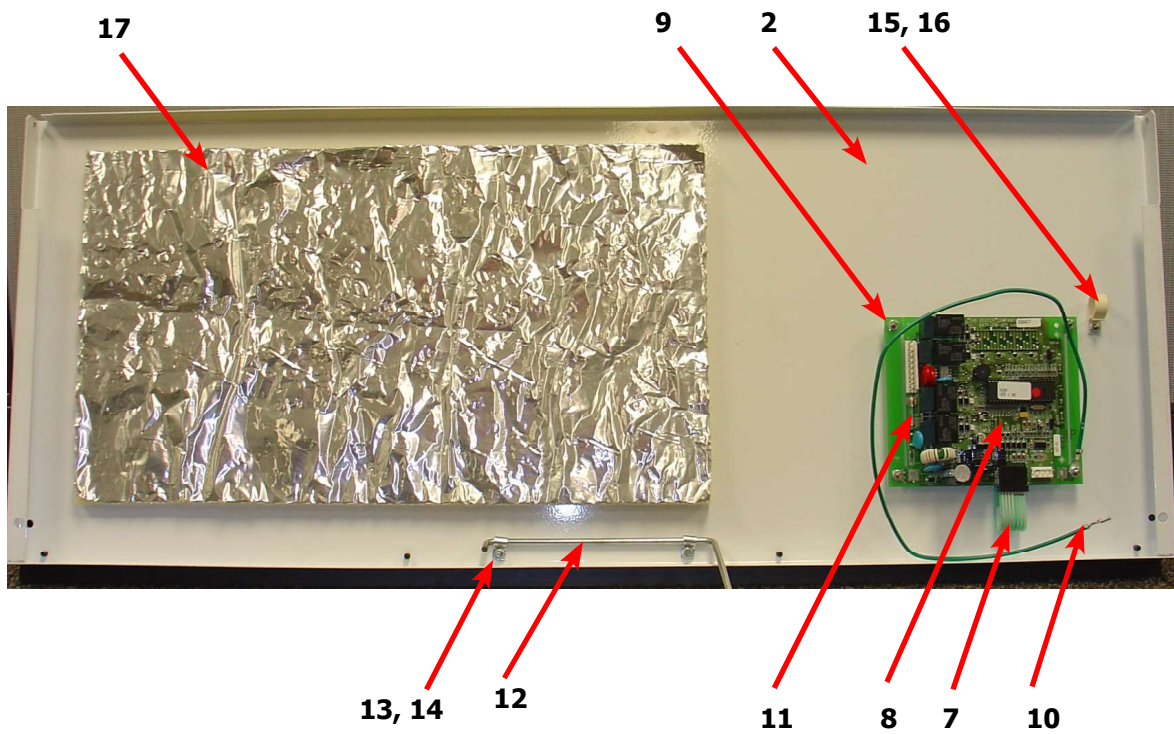
Dryer Cabinet Group

| Key | Description | T80 | |
|-----|---|--------------|---|
| 1 | Loading Door Complete SS/Brushed SS/Blk | 9960-305-001 | 1 |
| 1 | Loading Door Complete Wht/Brushed SS/Blk | 9960-305-003 | 1 |
| 2 | Door Assy, Loading (Ring only) Brushed SS | 9960-284-002 | 1 |
| 3 | Plate Assy, Hinge (SS) | 9982-368-001 | 1 |
| 3 | Plate Assy, Hinge (Wht) | 9982-368-003 | 1 |
| * | Cover-Hinge Back, Black | 9074-340-002 | 1 |
| * | Screw-10Bx3/8, Black | 9545-008-010 | 2 |
| * | Screw Hinge to Door | 9545-012-015 | 4 |
| * | Nut, Hinge to Door | 8640-413-002 | 4 |
| 4 | Glass, Door | 9212-002-004 | 1 |
| 5 | Gasket, Door Glass (Black) | 9206-413-002 | 1 |
| * | Support Door Glass | 9548-117-000 | 2 |
| 6 | Gasket, Door Outer Rim (Black) | 9206-420-005 | 1 |
| 7 | Handle, Loading Door | 9244-082-001 | 1 |
| * | Screw, Handle | 9545-018-017 | 2 |
| 8 | Stud Door Catch | 9531-033-003 | 1 |
| 9 | Nut-Hex, #10-32 | 8640-413-001 | 1 |
| 10 | Nut, Acorn | 8640-413-003 | 1 |
| * | Catch, Loading Door | 9086-015-002 | 2 |
| * | Rivit | 8638-190-009 | 4 |
| 11 | Strap, Hinge (Black) | 9966-014-002 | 1 |
| * | Plate Assy-Backup, Hinge | 9982-369-001 | 1 |
| * | Reinforcement-Front panel | 9817-003-001 | 1 |
| 12 | Screw-Phillips, 10-32x1/2 Chrome | 9545-012-003 | 8 |
| * | Screw-Phillips-Counter sink, 10-32x1/2 Chrome | 9545-012-028 | 4 |
| 13 | Screw-Special, Hinge to Door | 9545-052-001 | 1 |
| * | Nut-Allen, 1/4-20 | 8640-439-001 | 1 |
| 14 | Washer-Fiber/Plastic | 8641-436-003 | 1 |
| 15 | Front Panel Assy (SS) | 9454-868-001 | 1 |
| 15 | Front Panel Assy (Wht) | 9454-868-003 | 1 |
| 16 | Screw-Phillips, 10Bx1 3/4 | 9545-008-014 | 4 |
| 17 | Washer-Finish | 8641-585-001 | 4 |
| * | Nut-Spring | 8640-399-001 | 4 |
| * | Insulation-Front Panel, Top Half | 9277-058-001 | 1 |
| * | Insulation-Front Panel, Bottom Half | 9278-058-002 | 1 |
| 18 | Label-Warning | 8502-753-001 | 1 |
| 19 | Plug-Front Panel | 9456-050-001 | 1 |
| * | Switch-Door Closed | 9539-492-001 | 1 |
| * | Wire-Assy, Blk | 8220-063-026 | 1 |
| * | Wire-Assy-Blu | 8220-063-009 | 1 |
| * | Cover-Door Switch | 9074-351-001 | 1 |
| * | Nut-#10-32unf, 2B | 8641-413-002 | 2 |



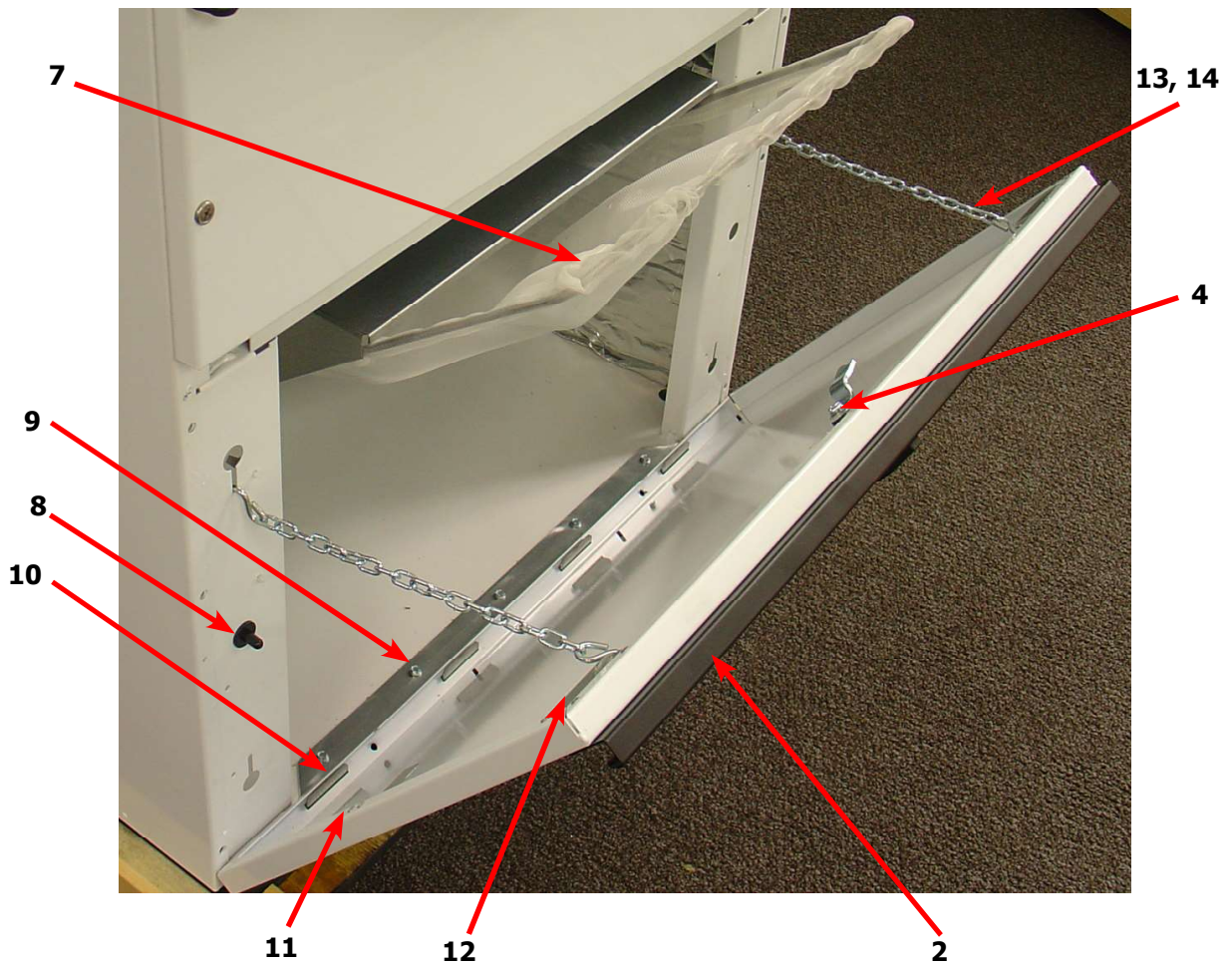
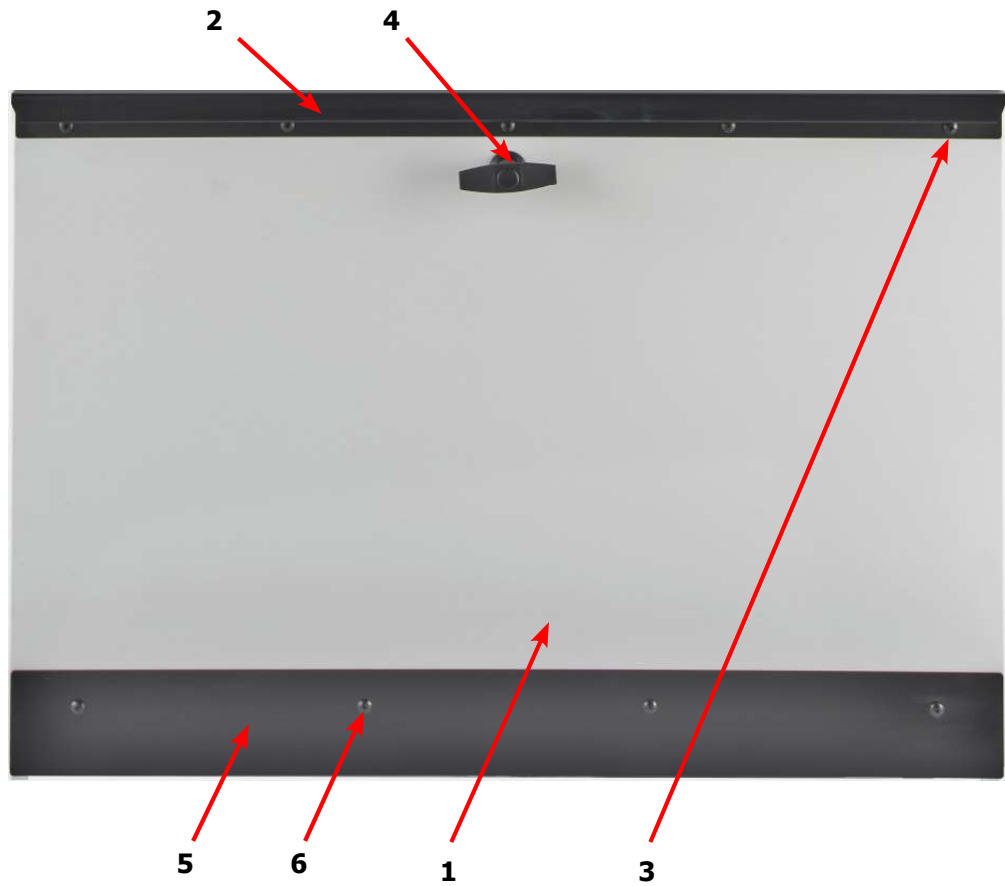
Dryer Cabinet Group Continued

| Key | Description | T80 | QTY |
|-----|----------------------------------|--------------|-----|
| 1 | Nameplate - Dexter Dryer Black | 9412-196-001 | 1 |
| 2 | Door Assy-Upper, OPL (SS) | 9960-292-001 | 1 |
| 2 | Door Assy-Upper, OPL (Wht) | 9960-292-003 | 1 |
| * | Bracket-Hinge | 9029-224-001 | 2 |
| * | Rivit- 3/16, Hinge to Door | 9491-009-001 | 2 |
| * | Rivit- 3/16, Hinge to Cabinet | 9491-009-001 | AR |
| 3 | Trim-Upper Service Door, Black | 9578-096-002 | 1 |
| 4 | Screw-Phillips, 10Bx3/8, Black | 9545-008-010 | 4 |
| 5 | Screw-Phillips, 10Bx1 3/4 | 9545-008-014 | 2 |
| 6 | Washer-Finish | 8641-585-001 | 2 |
| * | Nut-Spring | 8640-399-001 | 2 |
| 7 | Membrane Switch | 9801-103-001 | 1 |
| 8 | Kit-30/50/80 OPL, PCB-Controller | 9732-249-001 | 1 |
| * | Spacer-#6 x 1/2 | 9538-157-015 | 4 |
| 9 | Nut- #6-32 | 8640-411-003 | 4 |
| 10 | Wire Assy-GRN, 24" | 8220-137-001 | 1 |
| 11 | Fuse, .600MA/250V | 8636-024-001 | 1 |
| 12 | Support-Upper Service Door | 9548-288-002 | 1 |
| 13 | Clamp-Tube | 9079-121-002 | 2 |
| 14 | Nut, #6-32 | 8640-411-003 | 2 |
| 15 | Clamp-Cable, 1/2" | 8654-126-004 | 1 |
| 16 | Nut, #6-32 | 8640-411-003 | 1 |
| 17 | Insulation | 9277-041-016 | 1 |
| * | Harness-Control | 9627-770-003 | 1 |
| * | Harness-Temp Probe | 9627-679-002 | 1 |
| | | | |
| | | | |
| | | | |
| | | | |
| | | | |



Dryer Cabinet Group Continued

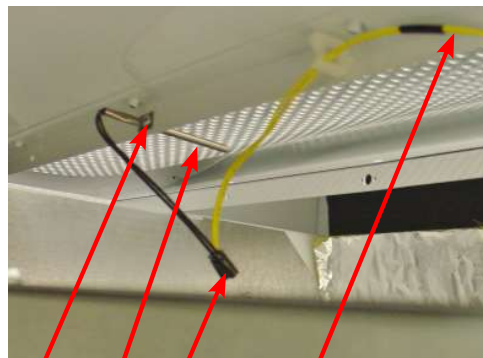
| Key | Description | T80 | QTY |
|-----|-----------------------------------|--------------|-----|
| 1 | Door-Lower Service, OPL, SS | 9108-127-001 | 1 |
| 1 | Door-Lower Service, OPL, Wht | 9108-127-003 | 1 |
| 2 | Handle-Door, Lower Service, Black | 9244-088-002 | 1 |
| 3 | Screw-Phillips, 10Bx3/8, Black | 9545-008-010 | 5 |
| 4 | Handle-Door, Lower Service OPL | 9244-084-002 | 1 |
| 5 | Trim-Lower Kick, Black | 9578-097-002 | 1 |
| 6 | Screw-Phillips, 10Bx3/8, Black | 9545-008-010 | 4 |
| 7 | Screen Assy, Lint | 9822-031-002 | 1 |
| 8 | Switch-Door Closure | 9539-492-001 | 1 |
| 9 | Hinge-Door, Lower | 9243-082-001 | 1 |
| 10 | Screw-5/16, 10ABx3/8 | 9545-008-024 | 5 |
| 11 | Bracket-Door Switch | 9029-226-001 | 1 |
| * | Rivit, 1/8 Low Profile | 9491-009-004 | 2 |
| 12 | Bracket-Chain | 9029-223-001 | 2 |
| * | Rivit, 1/8 Low Profile | 9491-009-004 | 8 |
| 13 | Hook, "S" Type | 9248-022-002 | 4 |
| 14 | Chain-Lower Service Door | 9099-012-006 | 2 |



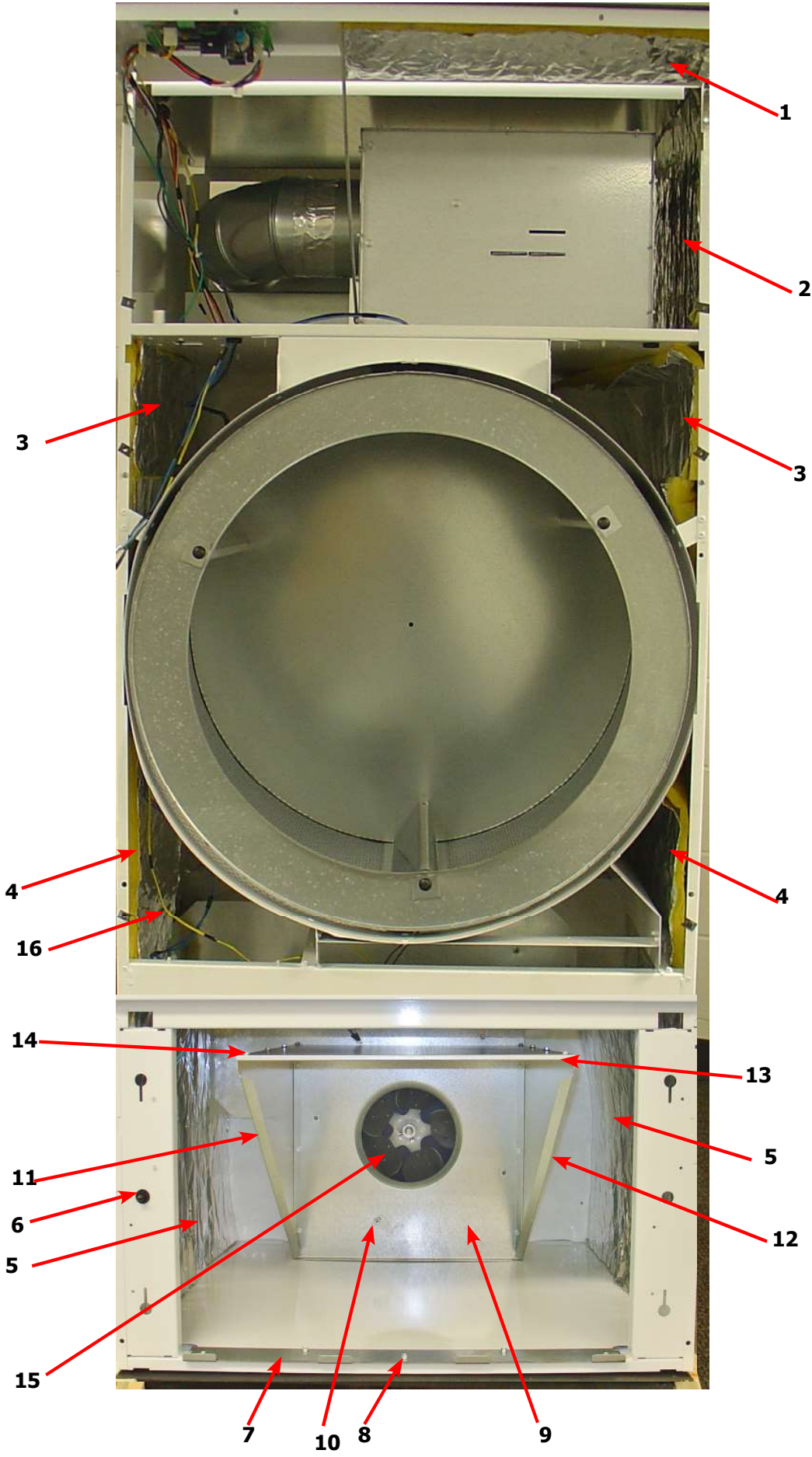
Dryer Cabinet Group Continued

| Key | Description | T80 | QTY |
|-----|---------------------------------------|--------------|-----|
| 1 | Insulation, Upper service Door | 9277-041-016 | 1 |
| 2 | Insulation, RH Burnner | 9277-041-023 | 1 |
| 3 | Insulation Tumbler Area, above Baffel | 9277-041-021 | 2 |
| 4 | Insulation Tumbler Area, below baffel | 9277-051-004 | 6 |
| 5 | Insulation Lint Compartment | 9277-041-025 | 2 |
| * | Screen Assy, Lint | 9822-031-002 | 1 |
| 6 | Switch-Door Closure | 9539-492-001 | 1 |
| 7 | Hinge-Door, Lower | 9243-082-001 | 1 |
| 8 | Screw-5/16, 10ABx3/8 | 9545-008-024 | AR |
| 9 | Lint Hood-Back | 9240-044-001 | 1 |
| 10 | Nut Wizlock, 8-32 | 8640-412-004 | 6 |
| 11 | Lint hood, LH | 9240-046-001 | 1 |
| 12 | Lint hood, RH | 9240-046-002 | 1 |
| 13 | Lint hood, Top | 9240-045-001 | 1 |
| 14 | Screw, 5/16- 10ABx3/8 | 9545-008-024 | 14 |
| 15 | Impeller, w/set screws | 9278-037-003 | 1 |
| 16 | Harness -Temp Probe | 9627-679-002 | 1 |
| 17 | Wire Nut, #71B | 8640-276-005 | 2 |
| 18 | Temp Probe | 9501-004-002 | 1 |
| 19 | Screw-Phillips, 8Bx1/4 | 9545-045-005 | 1 |

50Lb & 80Lb Temp Probe



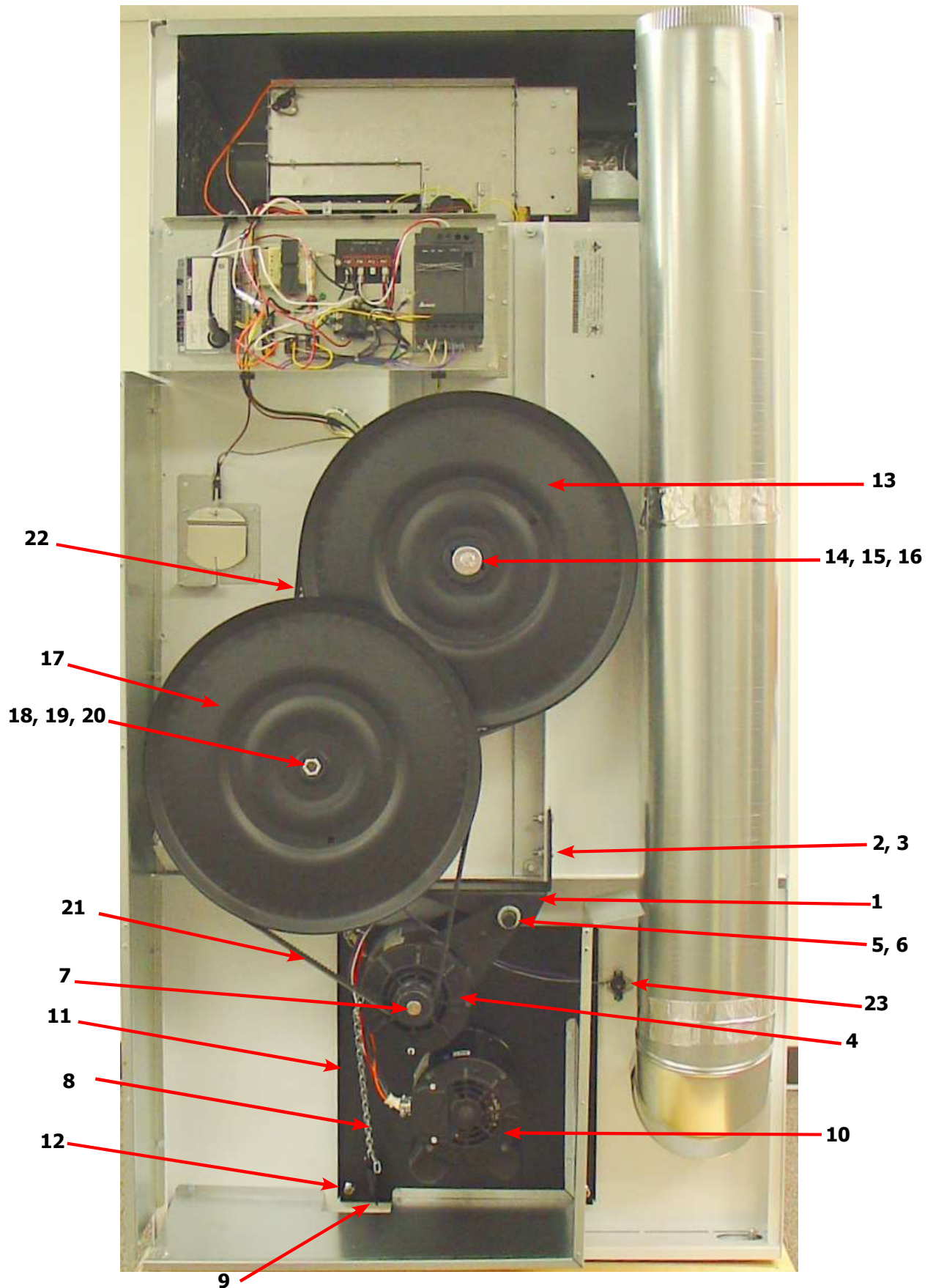
19 18 17 16



Dryer Rear View 80 Lb Reversing

| Key | Description | T-80 | QTY |
|-----|---|--------------|-----|
| 1 | Plate-Motor Mounting, Reversing | 9982-373-002 | 1 |
| 2 | Screw-Hex cap,3/8-16x1" | 9545-029-005 | 4 |
| 3 | Nut-Wizlock, 3/8-16 | 8640-415-004 | 4 |
| 4 | Motor-Drive, Inverter | 9376-307-003 | 1 |
| * | Bushing-Motor mounting | 9053-074-002 | 2 |
| 5 | Rod-Motor Mounting | 9497-222-008 | 1 |
| 6 | Collar-s/Set Screws | 9076-052-002 | 2 |
| 7 | Pulley-Motor Drive | 9453-169-012 | 1 |
| * | Screw-Set, 5/16-18x1/2" | 9545-028-013 | 2 |
| 8 | Chain-Motor Tension | 9099-012-008 | 1 |
| 9 | Spring, Motor Tension | 9534-319-002 | 1 |
| 10 | Motor, Blower | 9376-322-001 | 4 |
| * | Screw HXCAP, 3/8-16x3/4 (Motor mounting to Plate) | 9545-029-008 | 4 |
| * | Lock-Washer, 3/8" (Motor mounting to Plate) | 8641-582-003 | 4 |
| 11 | Plate, Motor Blower | 9982-352-002 | 1 |
| * | Gasket, Motor Plate | 9206-428-001 | 1 |
| 12 | Nut-3/8-16, Plate to cabinet | 8640-415-004 | 4 |
| * | Impeller w/set screw | 9278-037-003 | 1 |
| * | Tolerance Ring | 9487-234-001 | 1 |
| 13 | Pulley, Driven | 9908-043-002 | 1 |
| 14 | Washer-Flat, 1/2 | 8641-581-026 | 1 |
| 15 | Washer-Lock, Ext. tooth, 1/2 | 8641-582-016 | 1 |
| 16 | Bolt-3/4, 1/2-13x1/14 | 9545-017-009 | 1 |
| * | Support Arm, Intermediate pulley | 9991-053-002 | 1 |
| * | Bolt- 3/8-16x1 1/4 | 9545-029-010 | 3 |
| * | Nut, Wizlock, 3/8x16 | 8640-415-004 | 3 |
| * | Cap Screw, 3/8-16x1 1/2 | 9545-029-012 | 1 |
| * | Snap Ring | 9487-200-003 | 1 |
| * | Washer-Flat, 3/8x1 | 8641-581-035 | 1 |
| * | Idler Arm Assembly | 9861-024-002 | 1 |
| * | Snap Ring | 9487-200-006 | |
| * | Washer-Flat, 3/8x1 | 8641-581-039 | 1 |
| 17 | Pulley, Idler w/Bearings | 9908-042-006 | 1 |
| * | Snapping, Inside-Bearing | 9487-238-005 | 1 |
| 18 | Bearing, Ball | 9036-159-007 | 2 |
| * | Spacer, Bearing | 9538-173-002 | 1 |
| 19 | Washer-Flat | 8641-581-039 | 1 |
| 20 | Nut, 5/8-11 | 8640-425-002 | 1 |
| * | Hook "S" type | 9248-022-002 | 3 |
| * | Chain, Spring tension | 9099-012-009 | 1 |
| * | Spring, tension | 9534-151-000 | 1 |
| 21 | Belt Drive | 9040-076-003 | 1 |
| 22 | Belt, Driven | 9040-073-012 | 1 |
| 23 | Thermostat-Overtemp, Reset | 9576-207-006 | 1 |

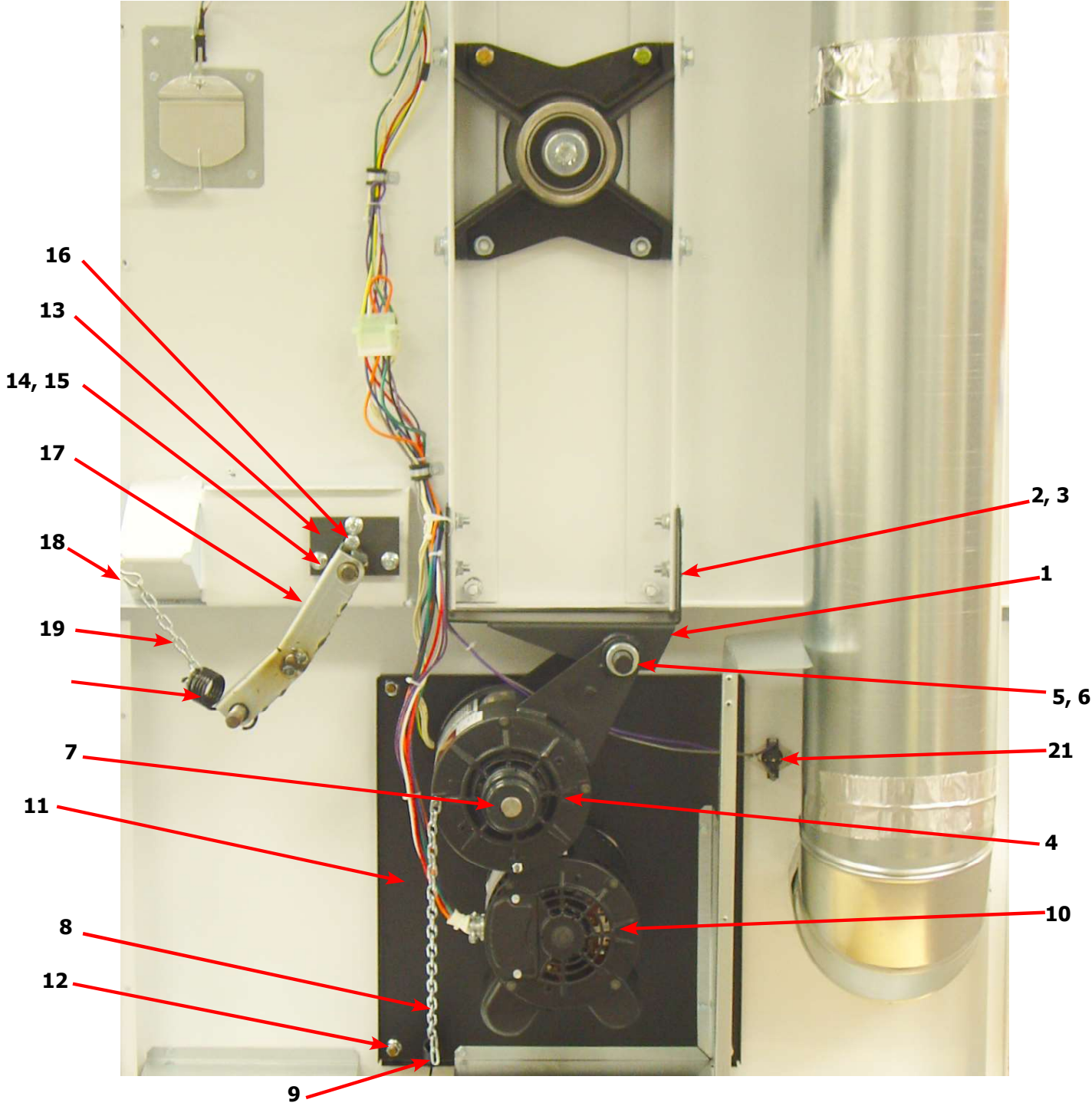
Dryer Rear View 80 Lb Reversing



Dryer Rear View 80 Lb Reversing Continued

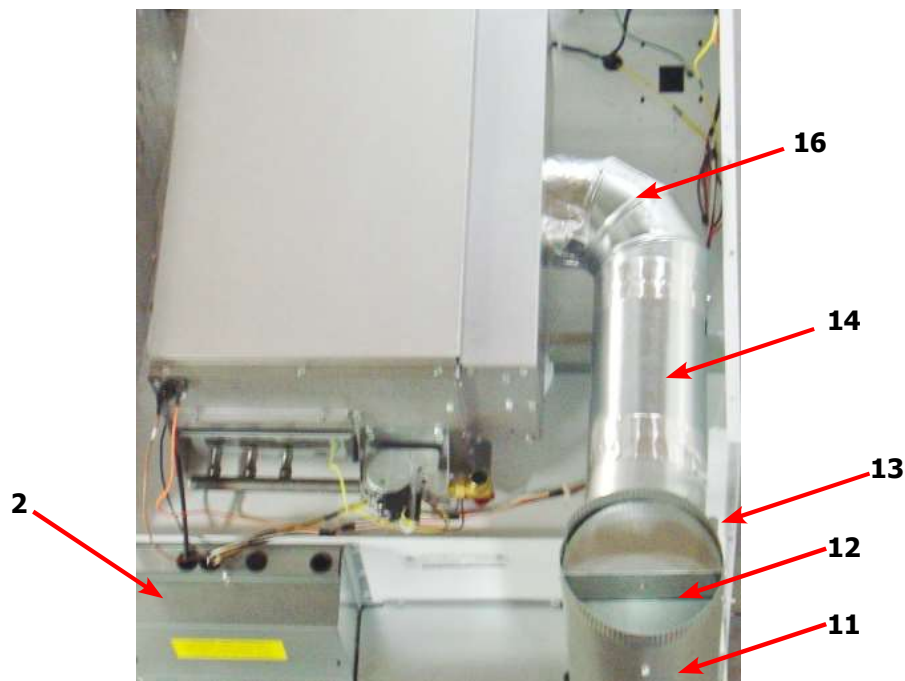
| Key | Description | T-80 | QTY |
|-----|---|--------------|-----|
| 1 | Plate-Motor Mounting, Reversing | 9982-373-001 | 1 |
| 2 | Screw-Hex cap,3/8-16x1" | 9545-029-005 | 4 |
| 3 | Nut-Wizlock, 3/8-16 | 8640-415-004 | 4 |
| 4 | Motor-Drive, Inverter | 9376-307-003 | 1 |
| * | Bushing-Motor mounting | 9053-074-002 | 2 |
| 5 | Rod-Motor Mounting | 9497-222-008 | 1 |
| 6 | Collar-s/Set Screws | 9076-052-002 | 2 |
| 7 | Pulley-Motor Drive | 9453-169-012 | 1 |
| * | Screw-Set, 5/16-18x1/2" | 9545-028-013 | 2 |
| 8 | Chain-Motor Tension | 9099-012-008 | 1 |
| 9 | Spring, Motor Tension | 9534-319-002 | 1 |
| 10 | Motor, Blower | 9376-322-001 | 1 |
| * | Screw HXCAP, 3/8-16x3/4 (Motor mounting to Plate) | 9545-029-008 | 4 |
| * | Lock-Washer, 3/8" (Motor mounting to Plate) | 8641-582-003 | 4 |
| 11 | Plate, Motor mounting | 9982-352-002 | 1 |
| * | Gasket, Motor Plate | 9206-428-002 | 1 |
| 12 | Nut-3/8-16, Plate to cabinet | 8640-415-004 | 4 |
| * | Impeller w/set screw | 9278-037-003 | 1 |
| 13 | Support Arm, Intermediate pulley | 9991-053-002 | 1 |
| 14 | Bolt- 3/8-16x1 1/4 | 9545-029-010 | 3 |
| 15 | Nut, Wizlock, 3/8x16 | 8640-415-004 | 3 |
| 16 | Cap Screw, 3/8-16x1 1/2 | 9545-029-012 | 1 |
| * | Snap Ring | 9487-200-003 | 1 |
| * | Washer-Flat, 3/8x1 | 8641-581-035 | 1 |
| 17 | Idler Arm Assembly | 9861-024-002 | 1 |
| * | Snap Ring | 9487-200-006 | 1 |
| * | Washer-Flat, 3/8x1 | 8641-581-039 | 1 |
| 18 | Hook "S" type | 9248-022-002 | 3 |
| 19 | Chain, Spring tension | 9099-012-002 | 1 |
| 20 | Spring, tension | 9534-151-000 | 1 |
| 21 | Thermostat-Overtemp, Reset | 9576-207-006 | 1 |

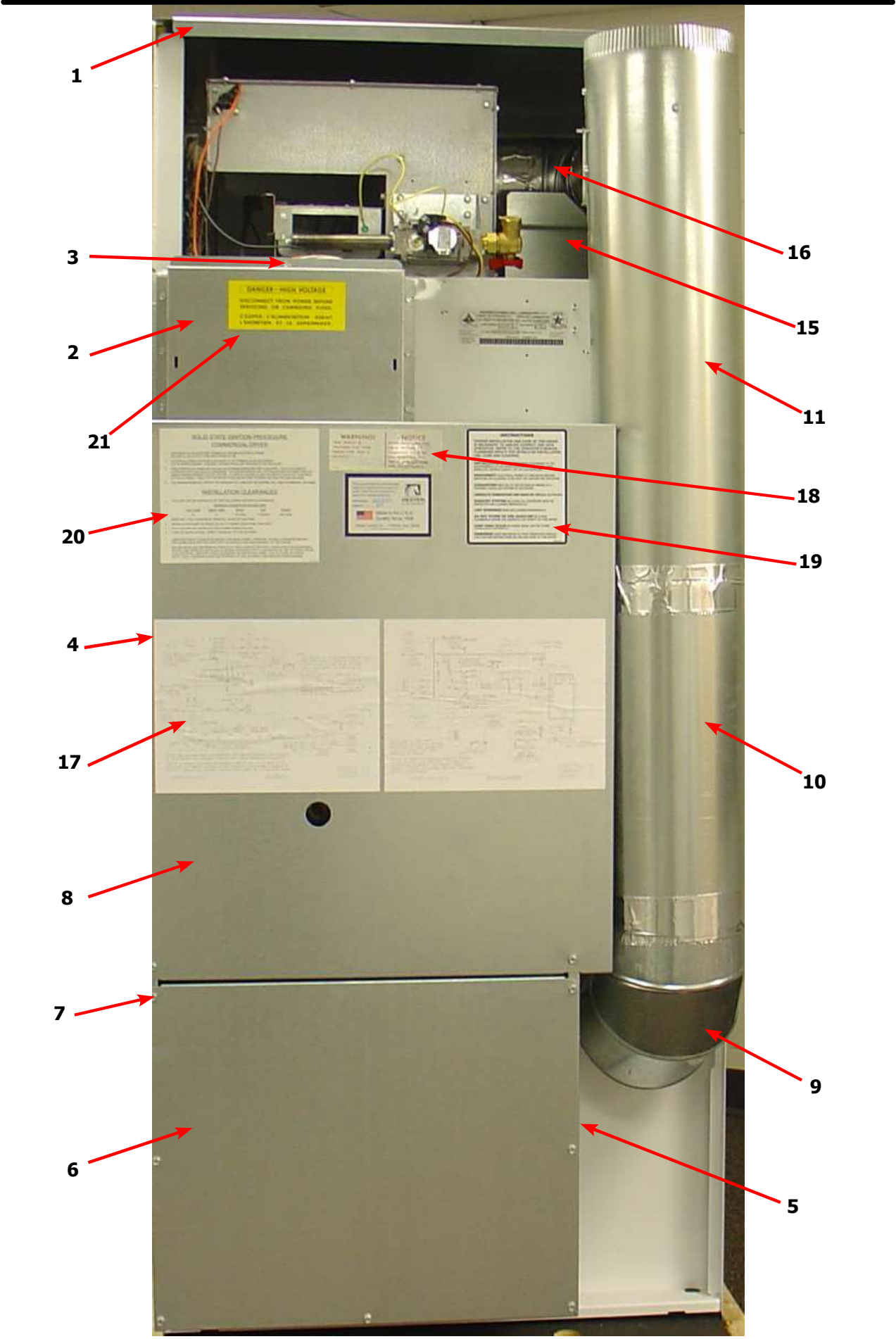
Dryer Rear View 80 Lb Reversing Continued



Dryer Rear View-Guard & Exhaust

| Key | Description | T80 | QTY |
|-----|-----------------------------------|--------------|-----|
| 1 | Cover Cabinet | 9074-349-001 | 1 |
| * | Screw-5/16, 10ABx3/8 | 9545-008-024 | AR |
| 2 | Cover-Control Box | 9074-353-001 | 1 |
| 3 | Screw-5/16, 10ABx3/8 | 9545-008-024 | AR |
| 4 | Guard, RH | 9208-101-001 | 1 |
| * | Screw-5/16, 10ABx3/8 | 9545-008-024 | AR |
| 5 | Guard Base & LH | 9208-102-001 | 1 |
| * | Screw-5/16, 10ABx3/8 | 9545-008-024 | AR |
| 6 | Guard-Lower | 9208-103-001 | 1 |
| 7 | Screw-5/16, 10ABx3/8 | 9545-008-024 | AR |
| 8 | Guard-upper | 9208-105-001 | 1 |
| * | Screw-5/16, 10ABx3/8 | 9545-008-024 | AR |
| 9 | Elbow-90 degree, 8" | 9142-039-001 | 1 |
| 10 | Pipe-Duct, 8" | 9109-121-002 | 1 |
| 11 | Tee-Duct, Recirculation, 8"-6" | 9810-019-001 | 1 |
| 12 | Damper | 9125-008-001 | 1 |
| * | Pin-Damper, Hinge | 9451-146-002 | 1 |
| * | Nut-Spring | 8520-141-000 | 2 |
| 13 | Bracket-Recirculation Duct, Small | 9029-228-001 | 1 |
| 14 | Pipe-Duct, 6" | 9109-122-003 | 1 |
| 15 | Bracket-Duct, Recirculation Large | 9029-247-001 | 1 |
| 16 | Elbow-90 degree, 6" | 9142-039-002 | 1 |
| * | Booklet-Owners | 8514-210-001 | 1 |
| 17 | Diagram & Schematics | 9506-476-001 | 1 |
| 18 | Label-Warning & Notice | 8502-600-001 | 1 |
| 19 | Label-Instructions | 8502-645-001 | 1 |
| 20 | Decal-Lighting & Clearence | 8527-151-001 | 1 |
| 21 | Label-High Voltage | 8502-614-004 | 1 |





1

3

2

21

20

4

17

8

7

6

16

15

11

18

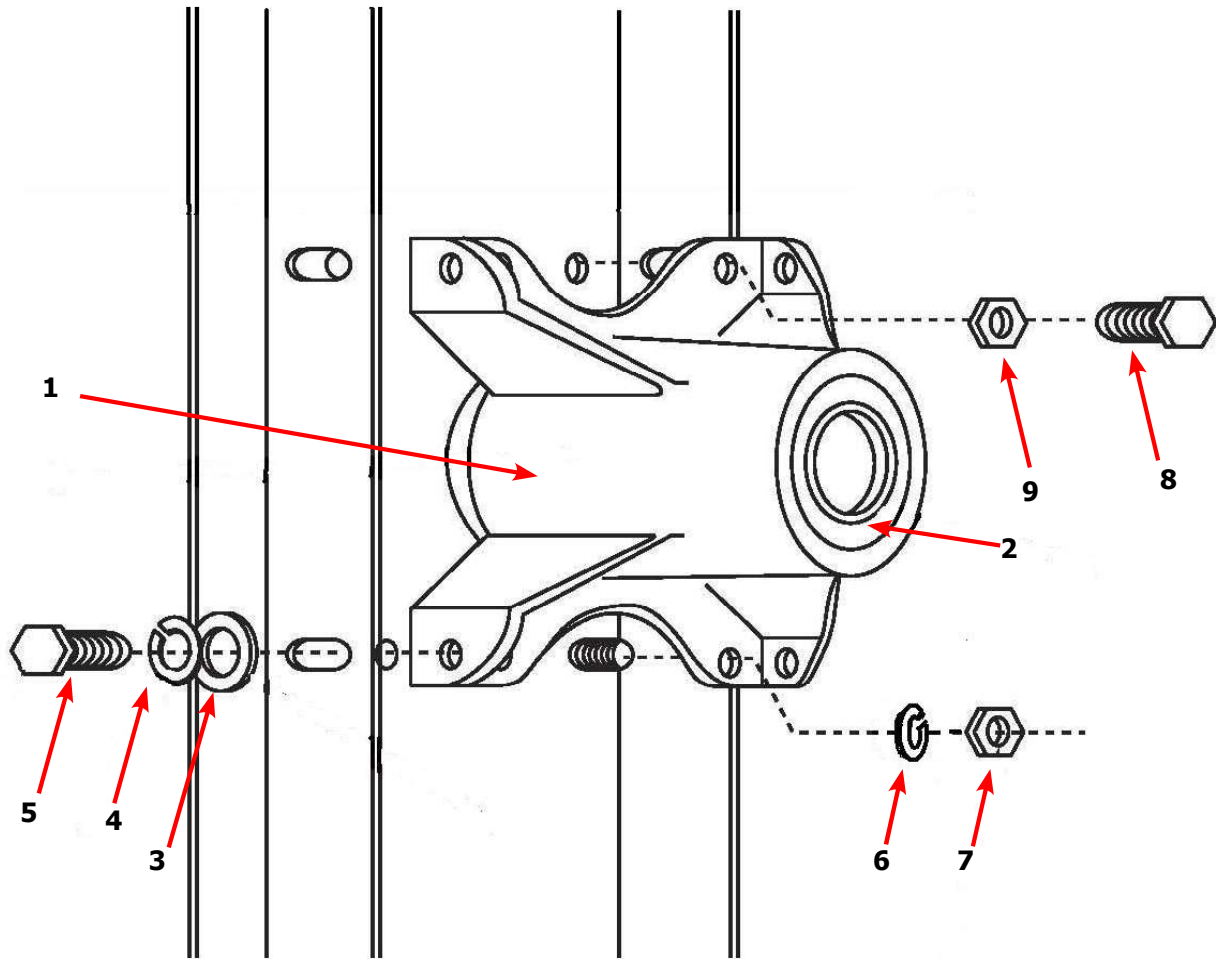
19

10

9

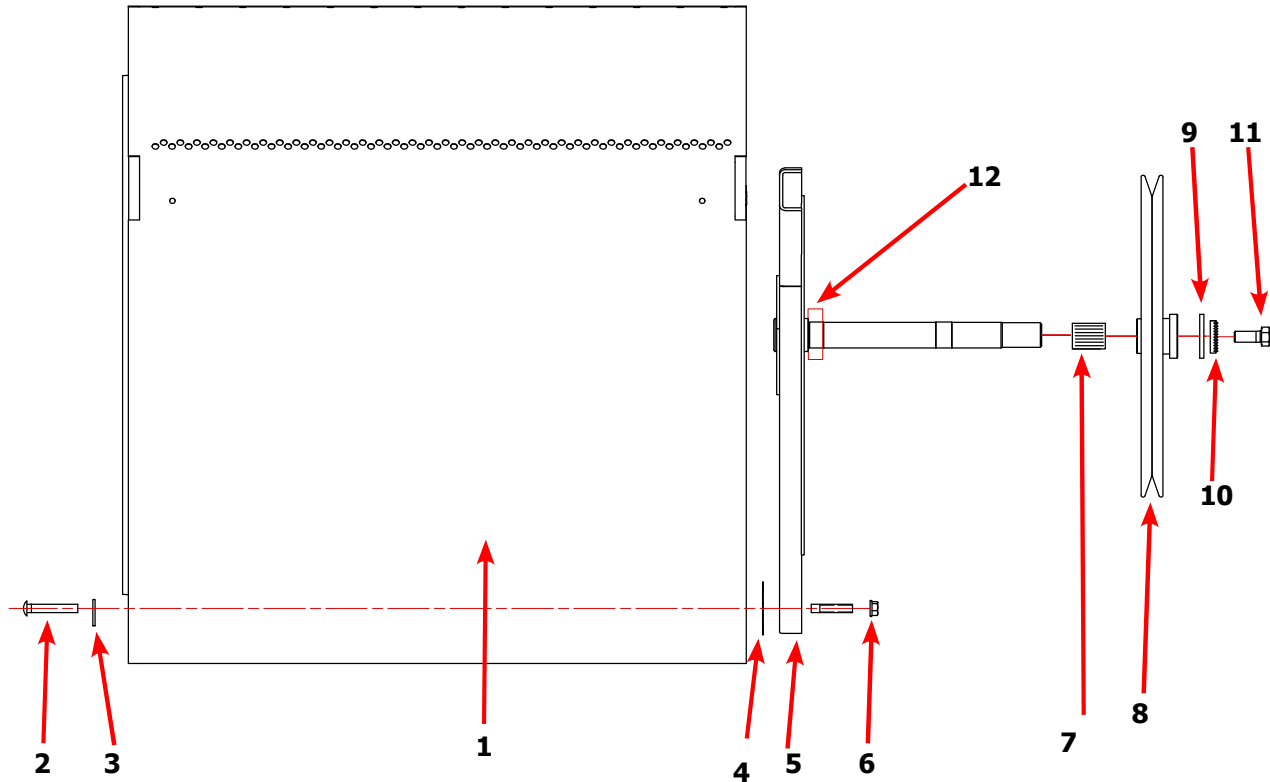
5

Dryer Rear View-Bearing Housing 80Lb



| Key | Description | T-80 | QTY |
|-----|--|--------------|-----|
| | Bearing Housing Complete Assy (Includes bearings & Spacer) | 9803-189-001 | |
| 1 | Housing, Bearing | 9241-183-003 | |
| * | Bearing, Ball, Front | 9036-159-002 | |
| 2 | Bearing, Ball, Rear | 9036-159-001 | |
| 3 | Washer, Flat 1/2 | 8641-581-026 | |
| 4 | Lock Washer Spring, 1/2 | 8641-582-004 | |
| 5 | Screw, 1/2-13x1 | 9545-017-004 | |
| 6 | Lock Washer Spring, 1/2 | 8641-582-004 | |
| 7 | Nut, 7/16-14 | 8640-416-001 | |
| 8 | Screw, 7/16-14x1 1/2 | 9545-059-003 | |
| 9 | Nut, 7/16-14 | 8641-416-001 | |

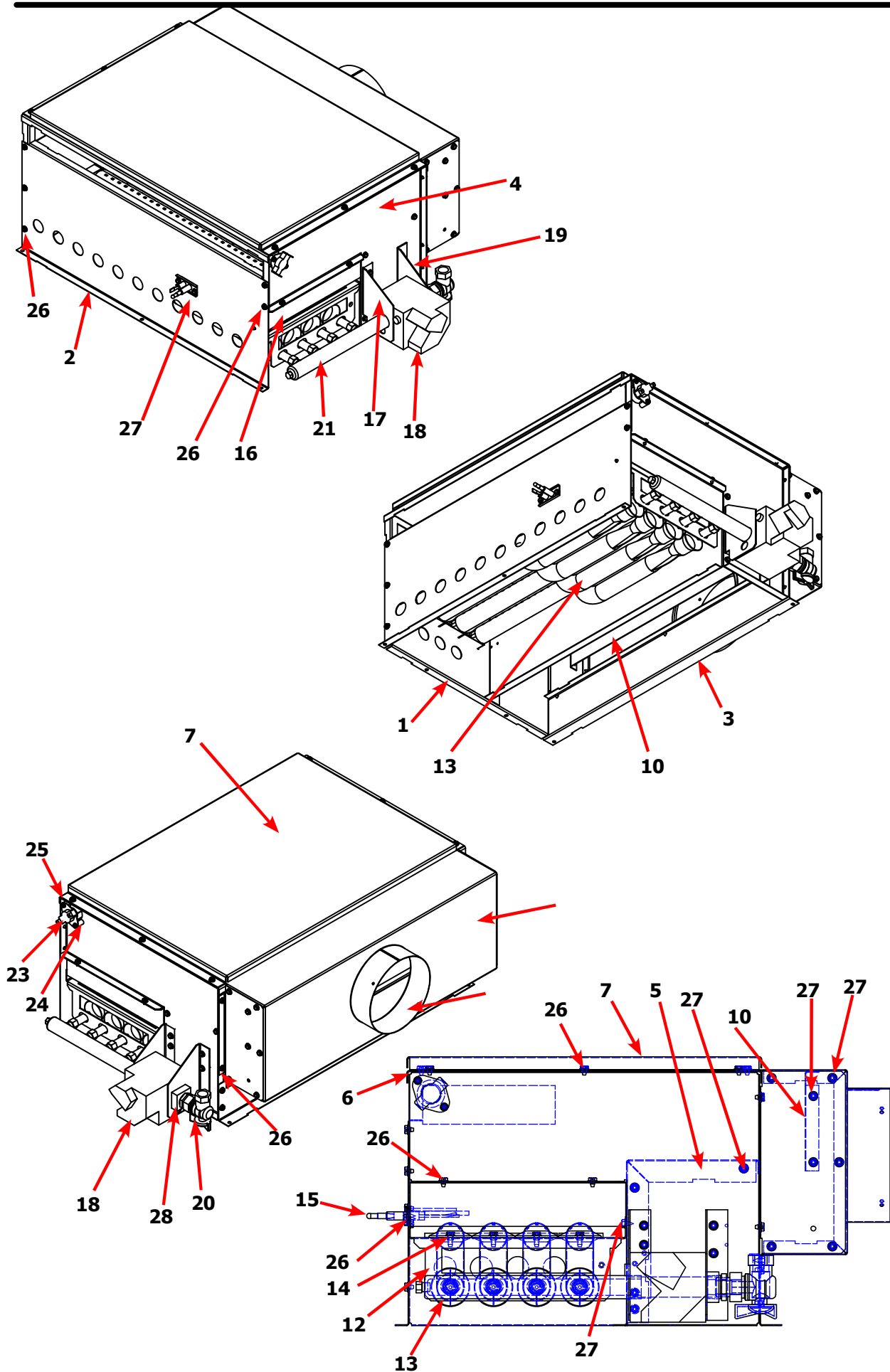
Dryer Tumbler Group 80Lb



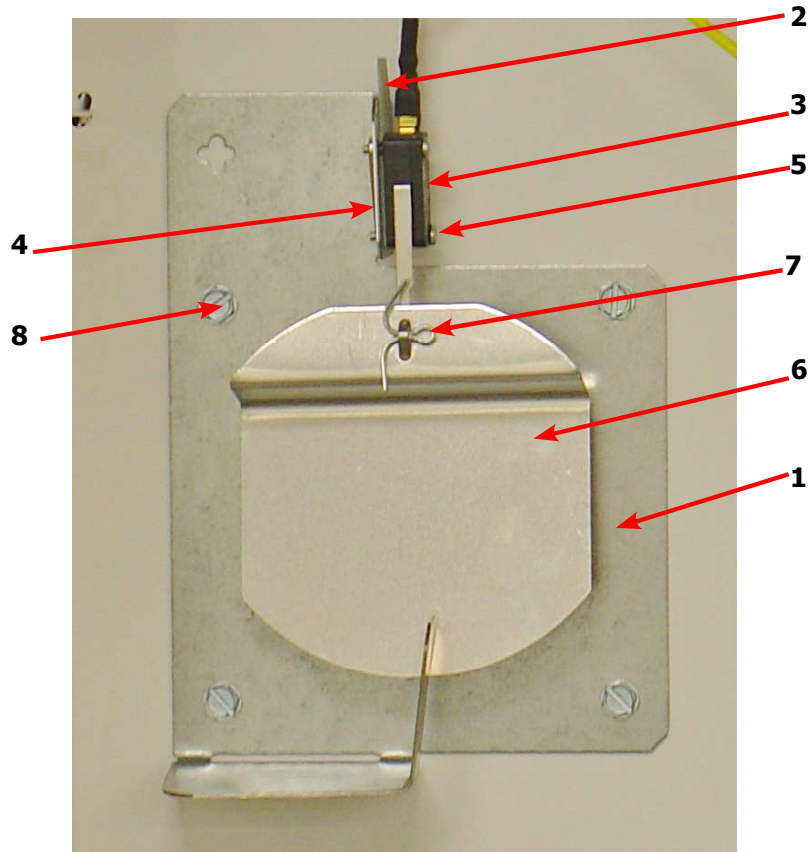
| Key | Description | T80 | QTY |
|-----|--|--------------|-----|
| * | Tumbler Assy Complete W/Spider (GALV) | 9848-139-001 | 1 |
| 1 | Tumbler Assy (Galvanized) | 9849-138-001 | 1 |
| 1 | Tumbler Assy Complete W/Spider (SS & Galv front) | 9848-139-002 | 1 |
| 1 | Tumbler Assy (Stainless Galvanized front) | 9849-138-002 | 1 |
| 2 | Rod, Tumbler | 9497-226-001 | 4 |
| 3 | Washer, Special | 8641-590-001 | 4 |
| 4 | Shim | 9552-013-000 | AR |
| 5 | Spider Assy w/Front Bearing | 9873-008-001 | 1 |
| 6 | Nut, Wiz Lock | 8640-417-005 | 4 |
| 7 | Tolerance Ring | 9487-234-001 | 1 |
| 8 | Pulley, Driven | 9908-043-002 | 1 |
| 9 | Washer -Flat | 8641-581-026 | 1 |
| 10 | LockWasher - IntTooth, 1" | 8641-582-016 | 1 |
| 11 | Screw, 1/2-13x1 1/4 | 9545-017-009 | 1 |
| 12 | Bearing, Front | 9036-159-002 | 1 |

Dryer Burner Housing Group 80Lb

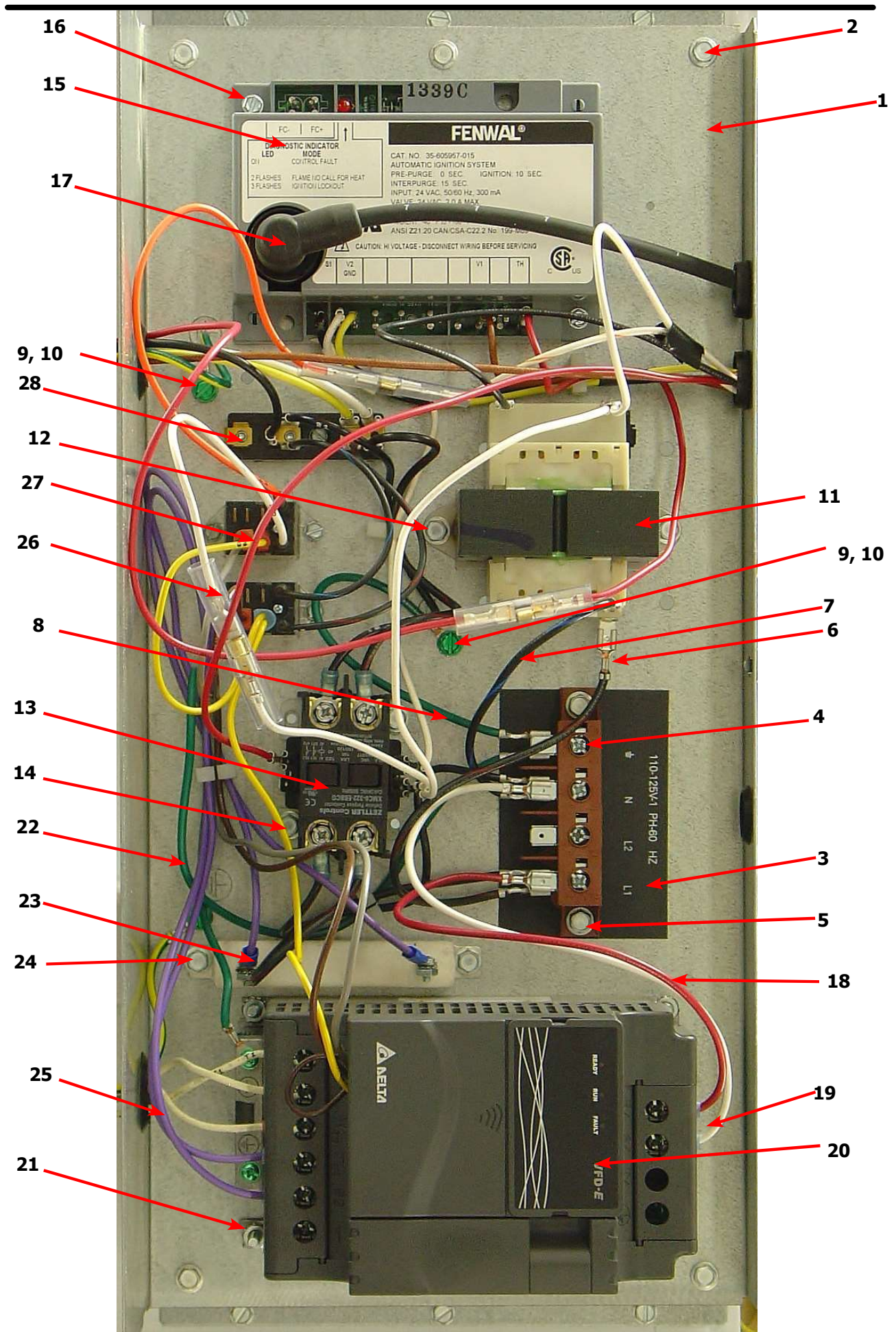
| Key | Description | Part Number | Qty |
|-----|---|--------------|-----|
| | Housing Assembly, Burner | 9803-212-001 | 1 |
| 1 | Panel-Burner Housing, Front | 9454-863-001 | 1 |
| 2 | Panel-Burner Housing, Side Right | 9454-861-001 | 1 |
| 3 | Panel-Burner Housing, Side Left | 9454-862-001 | 1 |
| 4 | Panel-Burner Housing, Back | 9454-864-001 | 1 |
| 5 | Baffle-Burner Housing, Center | 9049-098-001 | 1 |
| 6 | Panel-Burner Housing, Top | 9454-849-001 | 1 |
| 7 | Panel-Burner Housing, Top | 9074-343-001 | 1 |
| 8 | Baffle-Burner Housing, Extention | 9049-100-001 | 1 |
| 9 | Duct Adaptor, 6"x1.25" long | 9109-120-002 | 1 |
| 10 | Baffle-Burner Housing, Recirculation | 9049-099-001 | 1 |
| 11 | Side-Extention Baffle, Burner Housing | 9551-049-001 | 2 |
| 12 | Bracket-Support, Burner | 9029-213-001 | 1 |
| 13 | Burner, Main | 9048-021-001 | 4 |
| 14 | Screw, 10T-32x1/2 | 9545-008-008 | 4 |
| 15 | Electrode-Ignition | 9875-002-003 | 1 |
| 16 | Cover-Burner, Intet | 9074-344-001 | 1 |
| 17 | Bracket-Support, Gas Valve | 9029-234-001 | 1 |
| 18 | Control Assy,Gas Valve, White Rodgers 36J | 9857-193-001 | 1 |
| 19 | Bracket-support, Gas Valve Left hand | 9029-235-001 | 4 |
| 20 | Valve-Gas Shutoff, (Optional) | 9379-196-001 | 1 |
| 21 | Manifold Assy | 9381-014-001 | 1 |
| 22 | Orifice-Natural, #29 | 9425-069-021 | 3 |
| * | Orifice-LP, #46 | 9425-069-022 | 3 |
| * | Kit, LP Conversion, White Rodgers | 9732-102-023 | 1 |
| 23 | Thermostat-HI-Limit | 9576-203-002 | 1 |
| 24 | Spacer-1/4x5/8 long | 9538-166-009 | 2 |
| 25 | Screw-8Bx1 | 9545-045-013 | 2 |
| 26 | Screw, 10Bx1/4 | 9545-008-001 | 22 |
| 27 | Screw, 10ABx3/8 | 9545-008-024 | 31 |
| 28 | Bushing-Reducer, 3/4x1/2 | 8615-104-009 | 1 |



Dryer Air Flow Swwitch Assembly



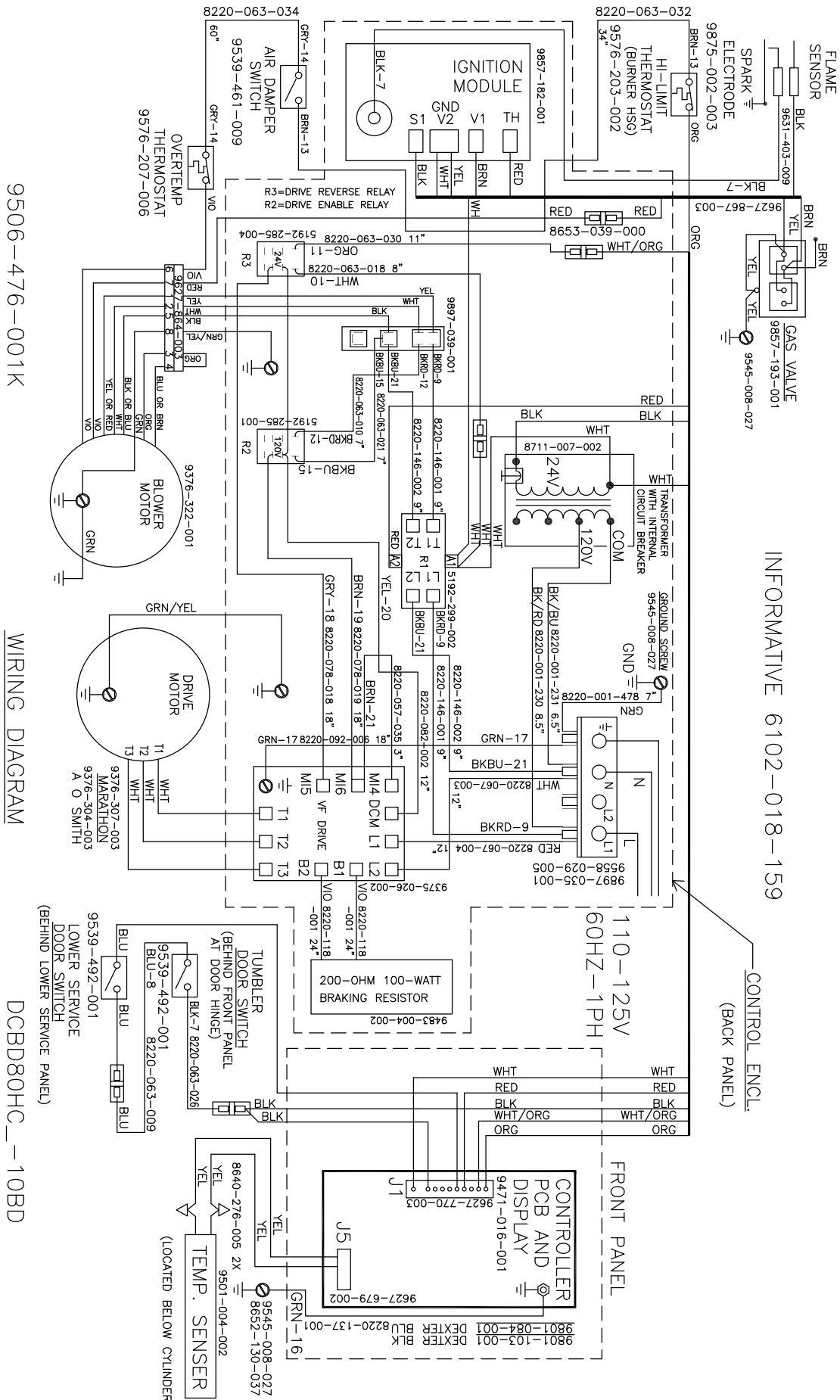
| Key | Description | T80 | QTY |
|-----|--------------------------|--------------|-----|
| * | Air Flow switch Assy | 9801-098-001 | 1 |
| 1 | Bracket-Airflow switch | 9029-200-001 | 1 |
| 2 | Shield-Switch | 9550-169-003 | 1 |
| 3 | Switch-Micro | 9539-461-009 | 1 |
| 4 | Nut-Twin, 4-40 | 8640-401-001 | 1 |
| 5 | Screw-.625, 4-40 | 9545-020-001 | 2 |
| 6 | Actuator-Air Flow Switch | 9008-007-001 | 1 |
| 7 | Pin-Cotter, .09375x.75 | 9451-169-002 | 1 |
| 8 | Screw, 10Bx1/4 | 9545-008-001 | 5 |



Dryer Rear View-Control Box

| Key | Description | T80 | QTY |
|-----|-----------------------------------|--------------|-----|
| 1 | Wrapper-Control Box | 9636-203-001 | 1 |
| 2 | Screw, 5/16-10AB-3/8 | 9545-008-001 | 6 |
| * | Cover-Control Box | 9074-353-001 | 1 |
| * | Screw, 5/16-10AB-3/8 | 9545-008-024 | 1 |
| 3 | Strip-Marker, Terminal | 9558-029-005 | 1 |
| 4 | Terminal Block Assy-Power, 4Pole | 9897-035-001 | 1 |
| 5 | Screw, 5/16-10AB-3/8 | 9545-008-024 | 2 |
| 6 | Wire assy-Blk/Red, 6 1/2" | 8220-001-230 | 1 |
| 7 | Wire assy-Blk/Blu, 6 1/2" | 8220-001-231 | 1 |
| 8 | Wire Assy, GRN, 7" | 8220-001-478 | 1 |
| 9 | Screw- 10-32TTx1/2 GRN | 9545-008-027 | 2 |
| 10 | Lockwasher, External tooth | 8641-582-006 | 2 |
| 11 | Transformer, w/Circuit braker | 8711-007-002 | 1 |
| 12 | Screw, 5/16-10AB-3/8 | 9545-008-024 | 2 |
| 13 | Relay-Motor, 30Amp, 24VAC | 5192-299-002 | 1 |
| 14 | Screw, 5/16-10AB-3/8 | 9545-008-024 | 2 |
| * | Wire assy-Blk/Red, 9" | 8220-146-001 | 2 |
| * | Wire assy-Blk/Blu, 9" | 8220-146-002 | 2 |
| 15 | Control Assy, Ignition (Module) | 9857-182-001 | 1 |
| 16 | Screw-8Bx3/4" | 9545-045-007 | 2 |
| * | Harness, Ignition Module | 9627-867-003 | 1 |
| 17 | Wire Assy- High Voltage Lead | 9631-403-009 | 1 |
| 18 | Wire Assy-Red, 12" | 8220-067-004 | 1 |
| 19 | Wire Assy- White, 12" | 8220-067-003 | 1 |
| 20 | Drive-VD Inverter, 1HP, 120VAC | 9375-026-002 | 1 |
| 21 | Nut, #10-32UNF | 8640-413-002 | 4 |
| 22 | Wire Assy-Green, 18" | 8220-092-006 | 1 |
| * | Wire Assy-BRN, 19" | 8220-078-019 | 1 |
| * | Wire Assy-Yellow, 20" | 8220-082-002 | 1 |
| * | Wire Assy-Gray, 18" | 8220-078-018 | 1 |
| * | Wire Assy, Brown 3" | 8220-057-035 | 1 |
| 23 | Resistor-Dynamic Breaking, 200OHM | 9483-004-002 | 1 |
| 24 | Screw-5/16, 10ABx3/8 | 9545-008-024 | 2 |
| 25 | Wire Assy, Violet 24" | 8220-118-001 | 2 |
| 26 | Relay, 120VAC | 5192-285-001 | 1 |
| 27 | Relay, 24VAC | 5192-285-004 | 1 |
| * | Wire Assy-BLK/BLU, 15" | 8220-063-021 | 1 |
| * | Wire Assy-BLK/RED, 12" | 8220-063-010 | 1 |
| 28 | Terminal Block | 9897-039-001 | 1 |

Wiring Informative for 60hz Dryer -10BD



9506-476-001K

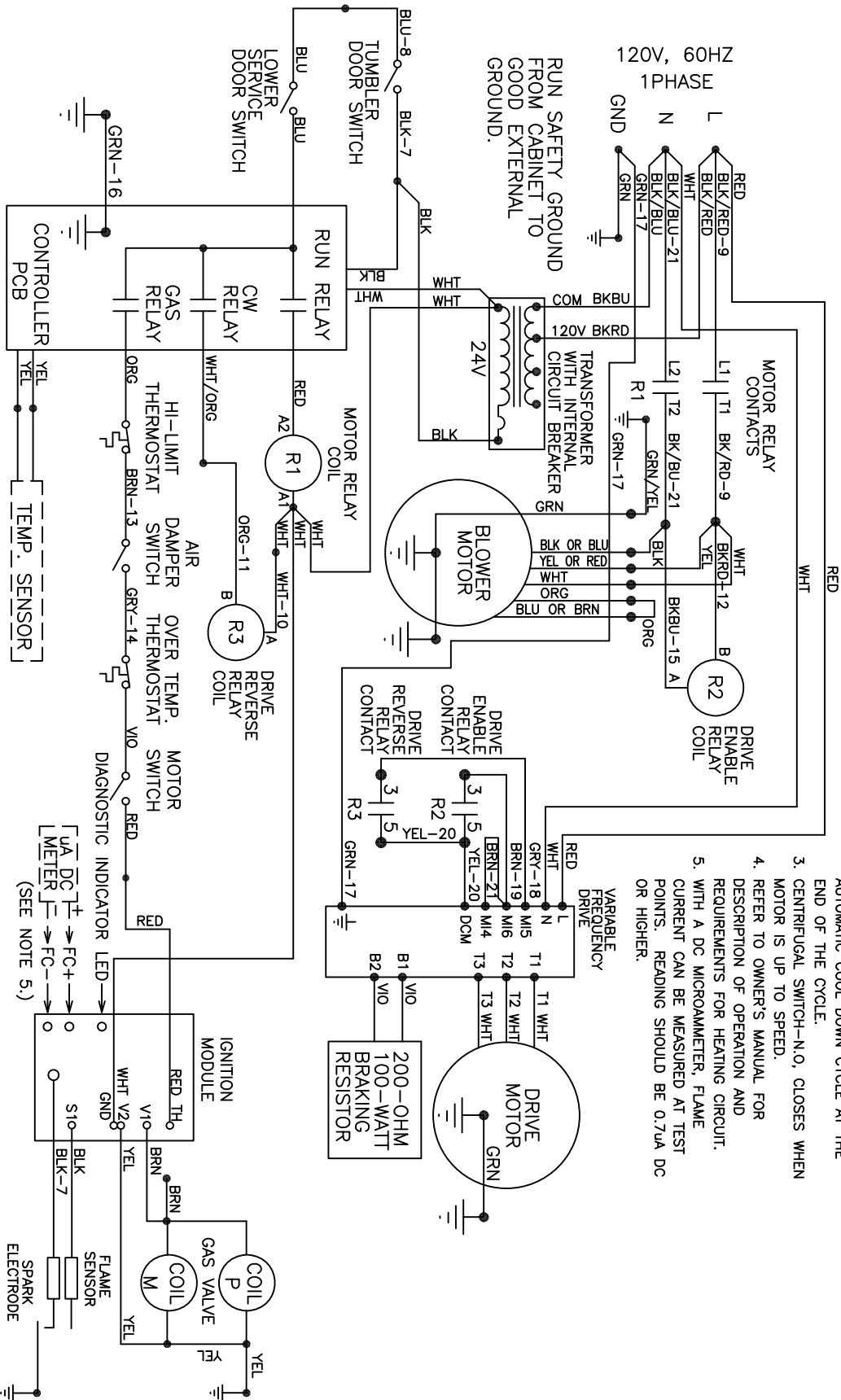
WIRING DIAGRAM

DCBD80HC--10BD

INFORMATIVE 6102-018-159

Wiring Schematic for 60hz Dryer -10BD

CAUTION: LABEL ALL WIRES PRIOR TO DISCONNECTION WHEN SERVICING CONTROLS. WIRING ERRORS CAN CAUSE IMPROPER AND DANGEROUS OPERATION. VERIFY PROPER OPERATION AFTER SERVICING.
 ATTENTION: AU MOMENT DEL'ENTRETIEN DES COMMANDES, ETIQUETEZ TOUS LES FILS AVANT DE LES DEBRANCHER. DES ERREURS DE CABLAGE PEUVENT ENTRAINER UN FONCTIONNEMENT INADEQUAT ET DANGEREUX. S'ASSURER QUE L'APPAREIL FONCTIONNE ADEQUATEMENT UNE FOIS L'ENTRETIEN TERMINE.



- NOTES:
1. DOOR SWITCHES-N.O., CLOSED WHEN DOORS ARE CLOSED.
 2. DRYER STARTS WHEN THE DOORS ARE CLOSED, A CYCLE IS SELECTED, AND THE START BUTTON IS PUSHED. THERE IS AN AUTOMATIC COOL DOWN CYCLE AT THE END OF THE CYCLE.
 3. CENTRIFUGAL SWITCH-N.O., CLOSSES WHEN MOTOR IS UP TO SPEED.
 4. REFER TO OWNER'S MANUAL FOR DESCRIPTION OF OPERATION AND REQUIREMENTS FOR HEATING CIRCUIT.
 5. WITH A DC MICROAMMETER, FLAME CURRENT CAN BE MEASURED AT TEST POINTS. READING SHOULD BE 0.7UA DC OR HIGHER.

9506-476-001K

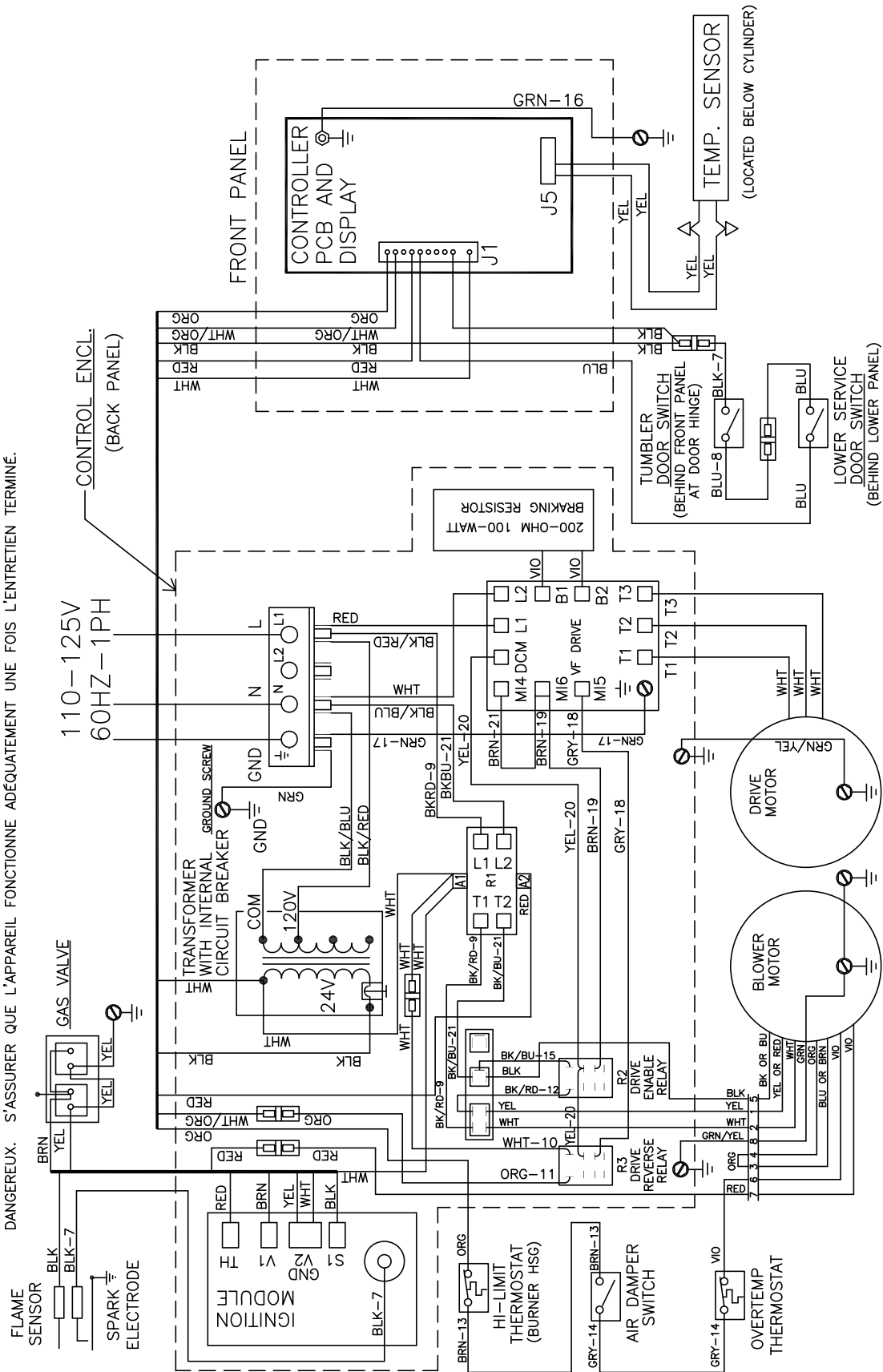
SCHEMATIC

DCBD80HC-10BD

Wiring Diagram for 60hz Dryer -10BD

CAUTION: LABEL ALL WIRES PRIOR TO DISCONNECTION WHEN SERVICING CONTROLS. WIRING ERRORS CAN CAUSE IMPROPER AND DANGEROUS OPERATION. VERIFY PROPER OPERATION AFTER SERVICING.

ATTENTION: AU MOMENT DE L'ENTRIEN DES COMMANDES, ÉTIQUETEZ TOUS LES FILS AVANT DE LES DÉBRANCHER. DES ERREURS DE CÂBLAGE PEUVENT ENTRAÎNER UN FONCTIONNEMENT INADÉQUAT ET DANGEREUX. S'ASSURER QUE L'APPAREIL FONCTIONNE ADEQUATEMENT UNE FOIS L'ENTRETIEN TERMINE.



DCBD80HC_-10BD

WIRING DIAGRAM

9506-476-001K

Section 6:

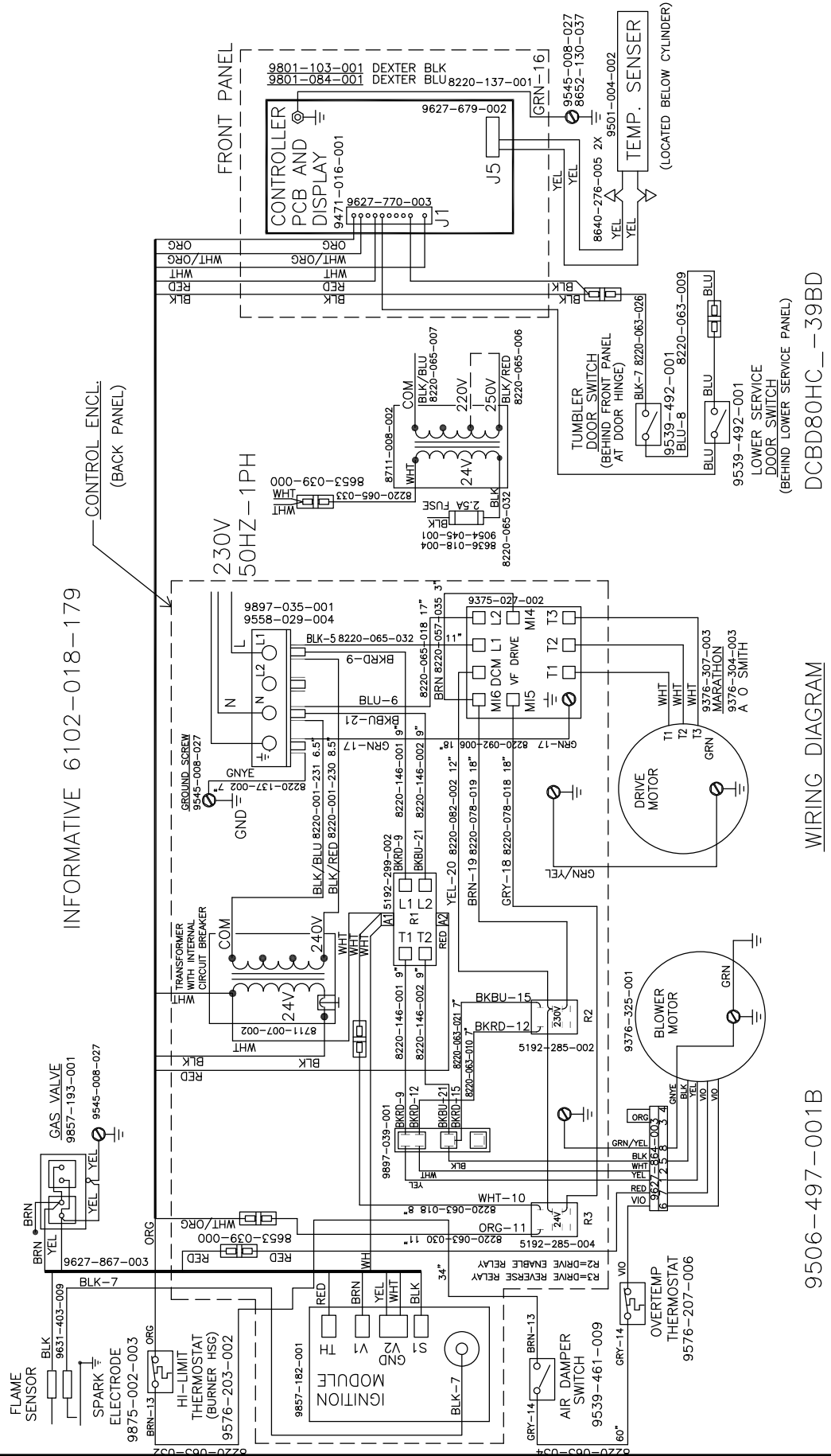
50Hz

Dryer Parts Data

DCBD80HC_-39BD 230VAC 1 PH 50Hz

| Key | Description | T80 | QTY |
|-----|--------------------------------|--------------|-----|
| * | Motor-Drive | 9376-307-003 | 1 |
| * | Pulley | 9453-169-012 | 1 |
| * | Motor-Blower | 9376-325-001 | 1 |
| * | Wiring Label-Schematic/Diagram | 9506-497-001 | 1 |
| * | Orifice Main Burner, #30 | 9425-069-002 | 4 |
| * | Overlay-Trim Lower door | 9435-016-006 | 1 |
| * | Label- Warning instructions | 8502-698-001 | 1 |

Wiring Informative for 50hz Dryer -39BD



INFORMATIVE 6102-018-179

WIRING DIAGRAM

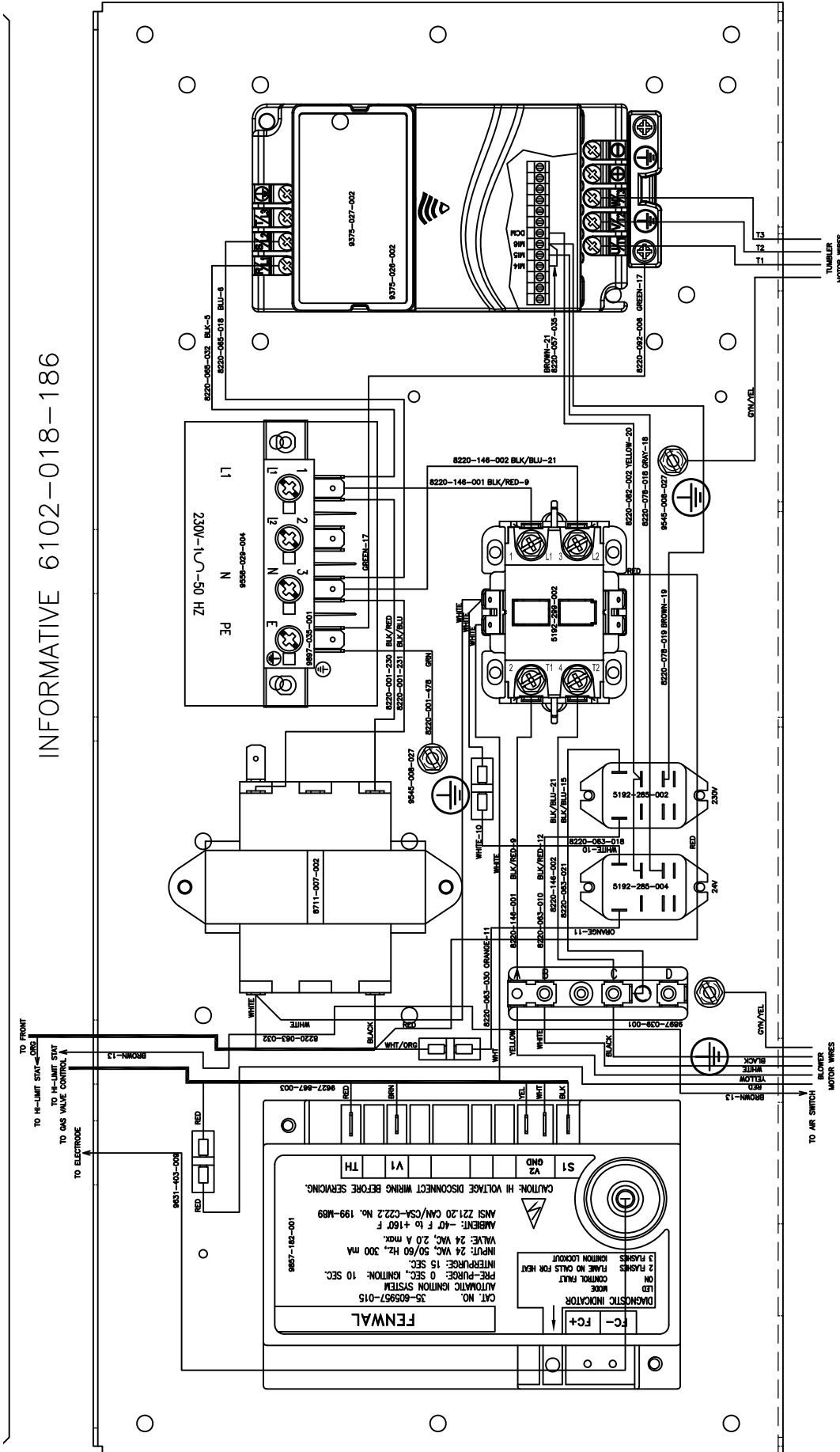
9506-497-001B

DCBD80HC_-39BD

DCBD80HC_-39BD 230VAC 1 PH 50Hz

| Key | Description | T80 | QTY |
|-----|----------------------------------|--------------|-----|
| * | Wrapper-Control Box | 9636-203-001 | 1 |
| * | Screw, 5/16-10AB-3/8 | 9545-008-024 | 9 |
| * | Cover-Control Box | 9074-353-001 | 1 |
| * | Screw, 5/16-10AB-3/8 | 9545-008-024 | 1 |
| * | Strip-Marker, Terminal | 9558-029-004 | 1 |
| * | Terminal Block Assy-Power, 4Pole | 9897-035-001 | 1 |
| * | Screw, 5/16-10AB-3/8 | 9545-008-024 | 2 |
| * | Wire assy-Blk/Red, 6 1/2" | 8220-001-230 | 1 |
| * | Wire assy-Blk/Blu, 6 1/2" | 8220-001-231 | 1 |
| * | Wire Assy, GRN/Yel, 7" | 8220-137-002 | 1 |
| * | Screw- 10-32Tx1/2 GRN | 9545-008-027 | 2 |
| * | Lockwasher, External tooth | 8641-582-006 | 2 |
| * | Transformer, w/Circuit braker | 8711-007-002 | 1 |
| * | Screw, 5/16-10AB-3/8 | 9545-008-024 | 2 |
| * | Relay-Motor, 30Amp, 24VAC | 5192-299-002 | 1 |
| * | Screw, 5/16-10AB-3/8 | 9545-008-024 | 2 |
| * | Wire assy-Blk/Red, 9" | 8220-146-001 | 2 |
| * | Wire assy-Blk/Blu, 9" | 8220-146-002 | 2 |
| * | Control Assy, Ignition (Module) | 9857-182-001 | 1 |
| * | Screw-8Bx3/4" | 9545-045-007 | 2 |
| * | Harness, Ignition Module | 9627-867-003 | 1 |
| * | Wire Assy- High Voltage Lead | 9631-403-009 | 1 |
| * | Wire Assy-Blue, 17" | 8220-065-018 | 1 |
| * | Wire Assy- Black, 11" | 8220-065-032 | 1 |
| * | Drive-VD Inverter, 1HP, 120VAC | 9375-027-002 | 1 |
| * | Nut, #10-32UNF | 8640-413-002 | 4 |
| * | Wire Assy-Green, 18" | 8220-092-006 | 1 |
| * | Wire Assy-BRN, 19" | 8220-078-019 | 1 |
| * | Wire Assy-Yellow, 20" | 8220-082-002 | 1 |
| * | Wire Assy-Gray, 18" | 8220-078-018 | 1 |
| * | Wire Assy, Brown 3" | 8220-057-035 | 1 |
| * | Relay, 230VAC | 5192-285-002 | 1 |
| * | Relay, 24VAC | 5192-285-004 | 1 |
| * | Wire Assy-BLK/BLU, 15" | 8220-063-021 | 1 |
| * | Wire Assy-BLK/RED, 12" | 8220-063-010 | 1 |

Control Box Informative for 50hz Dryer -39BD



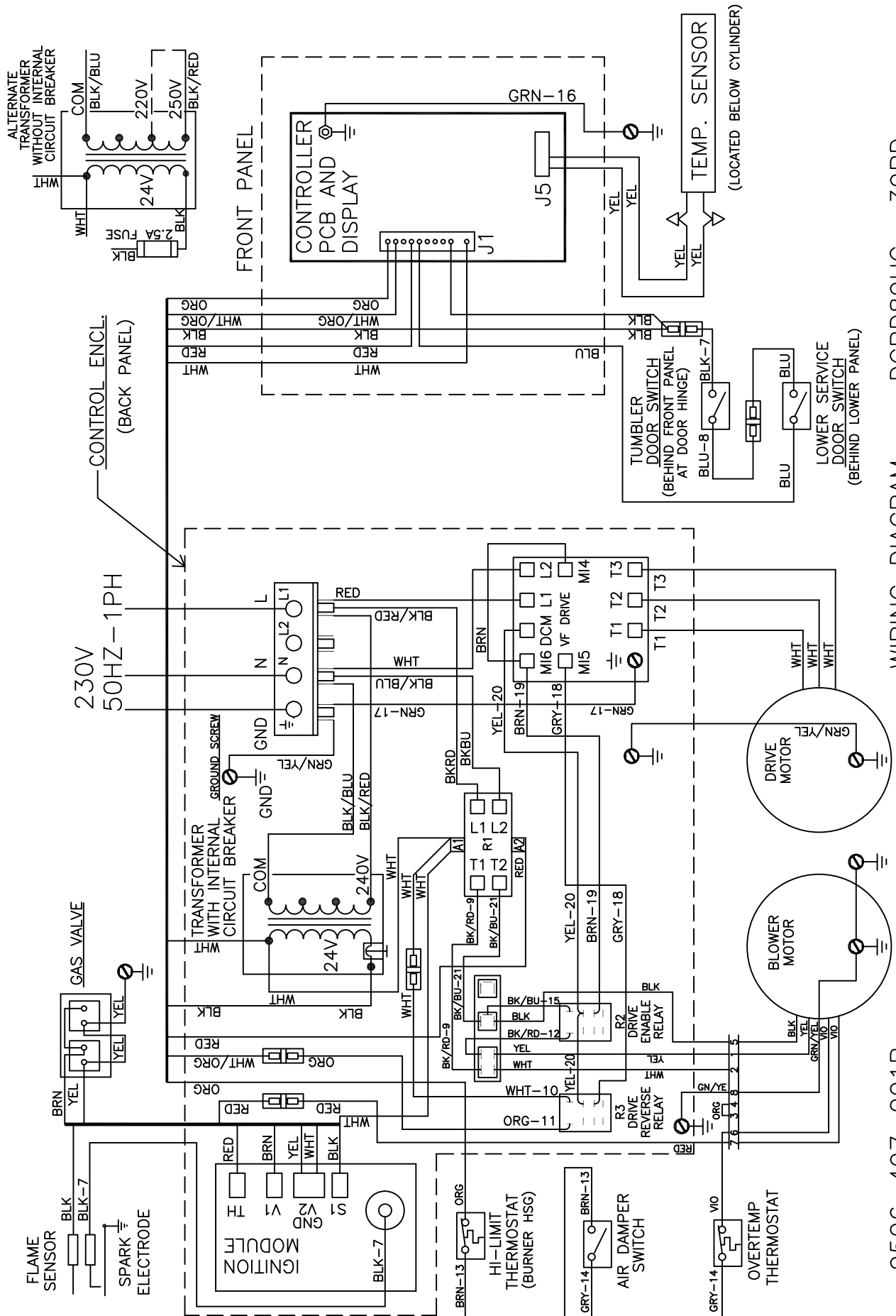
INFORMATIVE 6102-018-186

DCBD80HC-39BD

SAMPLE BOX

9636-203-001A

Wiring Diagram for 50hz Dryer -39BD



DCBD80HC_--39BD

9506-497-001B

WIRING DIAGRAM

