



SL2929

Parts Manual

American Dryer Corporation
88 Currant Road
Fall River MA 02720-4781 USA
Telephone: +1 (508) 678-9000 / Fax: +1 (508) 678-9447
e-mail: techsupport@amdry.com

www.adclaundry.com

Retain This Manual In A Safe Place For Future Reference

This product embodies advanced concepts in engineering, design, and safety. If this product is properly maintained, it will provide many years of safe, efficient, and trouble free operation.

ONLY properly licensed technicians should service this equipment.

OBSERVE ALL SAFETY PRECAUTIONS displayed on the equipment or specified in the installation manual included with the dryer.

The following "FOR YOUR SAFETY" caution must be posted near the dryer in a prominent location.

FOR YOUR SAFETY

Do not store or use gasoline or other flammable vapors and liquids in the vicinity of this or any other appliance.

POUR VOTRE SÉCURITÉ

Ne pas entreposer ni utiliser d'essence ni d'autres vapeurs ou liquides inflammables à proximité de cet appareil ou de tout autre appareil.

We have tried to make this manual as complete as possible and hope you will find it useful. The manufacturer reserves the right to make changes from time to time, without notice or obligation, in prices, specifications, colors, and material, and to change or discontinue models.

Important

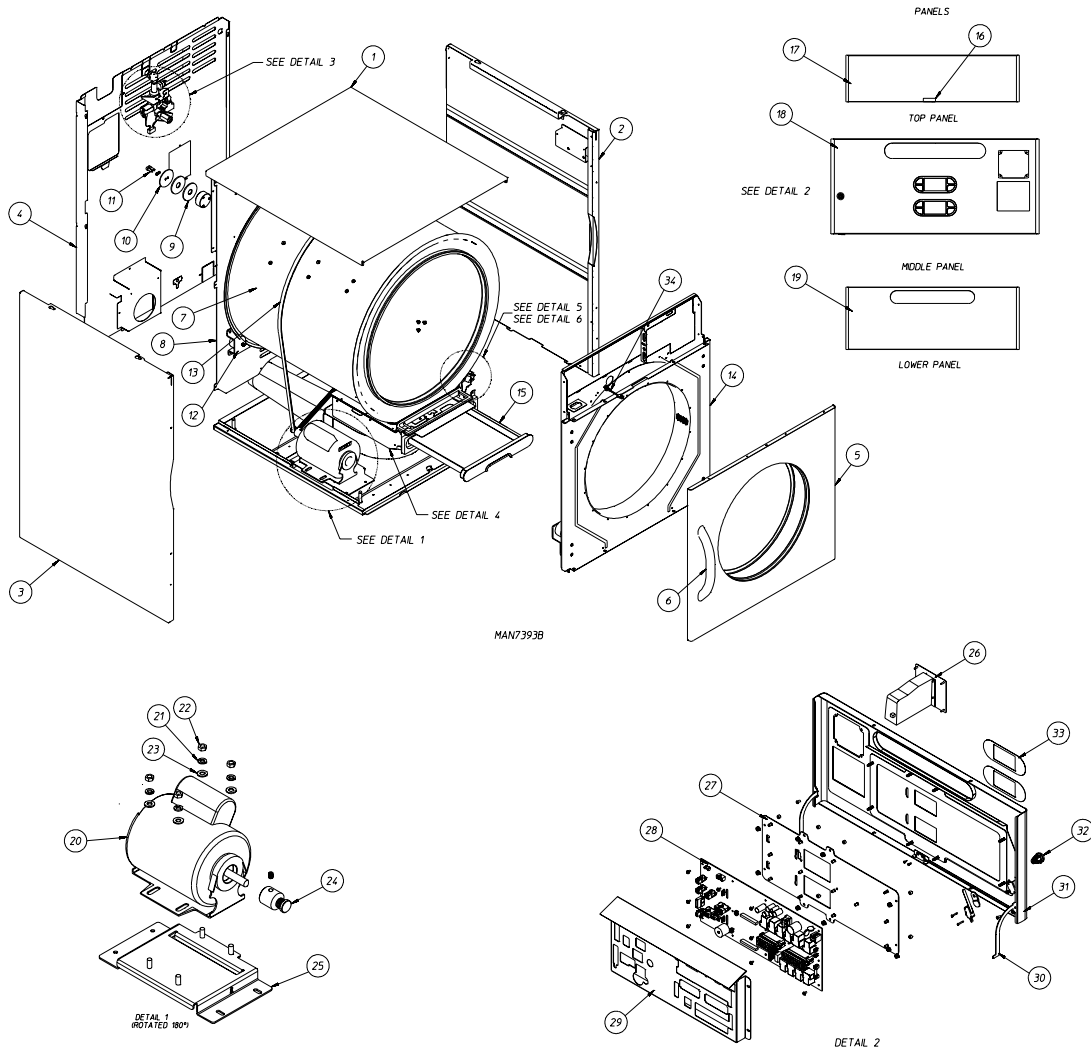
For your convenience, log the following information:

DATE OF PURCHASE _____ MODEL NO. **SL2929**

RESELLER'S NAME _____

Serial Number(s) _____

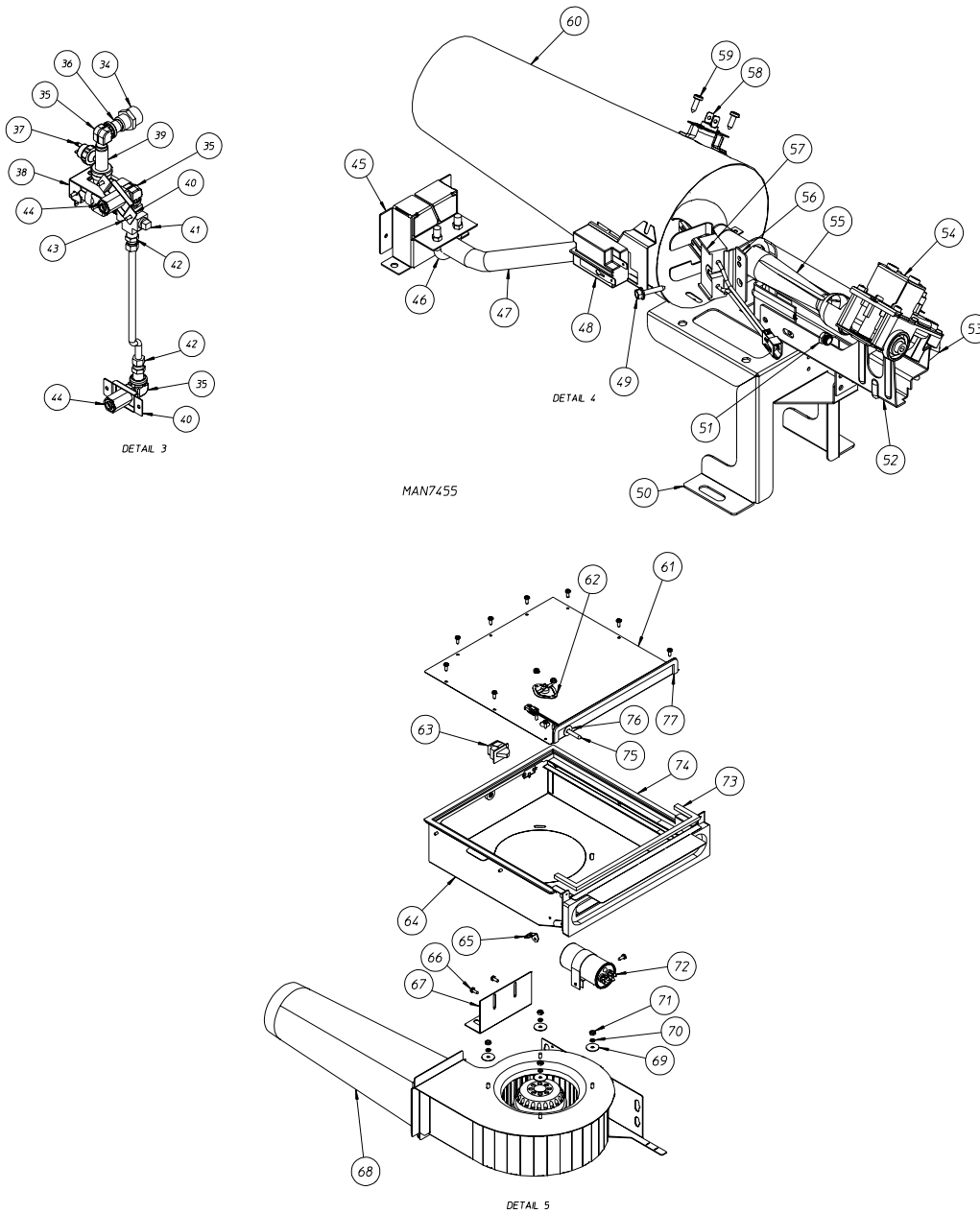
Parts Diagram



| Illus. No. | Part No. | Qty. | Description |
|------------|----------|------|---|
| 1 | 819335 | 1 | Outer Top Assembly |
| 2 | 819332 | 1 | Right Side Panel Assembly |
| 3 | 819330 | 1 | Left Side Panel Assembly |
| 4 | 818806 | 1 | Back Guard Assembly |
| | 185024 | 1 | Exhaust Bracket |
| | 150331 | 18 | #8-18 x 1/2" T20 TORX® |
| 5 | 819392 | 2 | Door Right-Hand (White) |
| | 819399 | 2 | Door Right-Hand (Stainless Steel) |
| 6 | 819839 | 2 | Door Handle (White) |
| | 819839 | 2 | Door Handle (Black) |
| 7 | 819336 | 1 | Tumbler Assembly |
| | 115906 | 1 | Tumbler Felt |
| | 401010 | 1 | Adhesive (For Felt) |
| 8 | 818805 | 2 | Rear Tumbler Support |
| | 122200 | 2 | Sail Switch |
| | 819188 | 2 | S.A.F.E. Temperature Sensor Harness |
| | 819323 | 2 | Phase 8 Hot Surface Ignition Sail Switch Assembly |
| 9 | 153048 | 4 | Inner Friction Pad |
| 10 | 318891 | 2 | Backup Washer 2 Screws |
| 11 | 150445 | 4 | 1/4-20 x 3/4" Bolt (Black) |
| 12 | 818728 | 2 | Left Rear Wheel Assembly |
| | 818729 | 2 | Right Rear Wheel Assembly |
| | 180050 | 2 | Support Wheel |
| | 154267 | 2 | Shoulder Bolt |

| <u>Illus. No.</u> | <u>Part No.</u> | <u>Qty.</u> | <u>Description</u> |
|-------------------|-----------------|-------------|---|
| 13 | 100197 | 1 | Belt |
| 14 | 819772 | 2 | Front Tumbler Support Assembly (for models mfd. as of June 23, 2008) |
| | 818655 | 2 | Front Tumbler Support Assembly |
| | 818998 | 2 | Front Tumbler Support Assembly with Auto Cycle (for models mfd. as of June 23, 2008) |
| | 819362 | 2 | Front Tumbler Support Assembly with Auto Cycle |
| | 819357 | 2 | Moisture Sensor Assembly |
| | 818713 | 2 | Front Right Wheel Assembly |
| | 818714 | 2 | Front Left Wheel Assembly |
| | 180050 | 2 | Support Wheel |
| | 154267 | 2 | Shoulder Bolt |
| 15 | 819345 | 2 | Lint Drawer Assembly (Specify White or Black) |
| | 818802 | 1 | Lint Drawer Assembly (Stainless Steel) |
| 16 | 819196 | 2 | Phase 8 Door Switch Assembly |
| 17 | 818853 | 1 | Top Trim Panel Assembly (White) |
| | 819605 | 1 | Top Trim Panel Assembly (Stainless Steel) |
| | 112375 | 1 | Solaris Oval Logo |
| 18 | 818899 | 1 | Phase 8.4 Coin Control Panel Assembly (Black) |
| | 819326 | 1 | Phase 8.4 Non-Coin Control Panel Assembly (Black) |
| | 154061 | 16 | U-Nut Retainer |
| | 183129 | 16 | #10-32 x 1/2" T20 Truss Head |
| 19 | 887183 | 1 | Toe Panel with Slots (White) |
| | 185020 | 1 | Toe Panel with Slots (Stainless Steel) |
| 20 | 884343 | 2 | Drive Motor Assembly (60 Hz) |
| | 887070 | 2 | Drive Motor Assembly (50 Hz) |
| 21 | 153002 | 4 | 5/16" Split Lock Washer |
| 22 | 152004 | 4 | 5/16-18 Hex Nut |
| 23 | 153001 | 4 | 5/16" Flat Washer |
| 24 | 185001 | 2 | 60 Hz 4-Pole Motor Sheave |
| | 185000 | 2 | 50 Hz 4-Pole Motor Sheave |
| | 154321 | 2 | Allen Setscrew |
| 25 | 318548 | 2 | Motor Base |
| 26 | 818213 | 1 | Phase 8 Coin Acceptor Assembly |
| | 818661 | 1 | Coin Vault Assembly |
| 27 | 819308 | 1 | Phase 8 Display Mount Stud Assembly |
| 28 | 887102 | 1 | Phase 8 Computer |
| | 887103 | 1 | Phase 8 with S.A.F.E. System Option |
| | 136116 | 1 | 3-Amp Fast-Acting Fuse |
| | 136054 | 2 | 15-Amp Slo-Blo Fuse |
| 29 | 319187 | 1 | Computer Cover |
| 30 | 318929 | 1 | Control Panel Hinge (Left) |
| | 318930 | 1 | Control Panel Hinge (Right) |
| | 154200 | 4 | 5/32" Rivet for 1/8-5/16" |
| 31 | 818899 | 1 | Coin Control Panel Assembly |
| 32 | 160071 | — | Keylock Switch (for models mfd. as of November 5, 2010) |
| | 883978 | — | XX4451 Lock Assembly (for models mfd. prior to November 5, 2010) |
| | 160066 | — | Long Cam (for models mfd. prior to November 5, 2010) |
| | 122200 | — | Sail Switch (for models mfd. prior to November 5, 2010) |
| | 160140 | 1 | X4451 Key |
| 33 | 112586 | 2 | Non-Coin Keypad |
| | 112587 | 2 | Coin Keypad |
| 34 | 818370 | 1 | Rotation Sensor Switch Assembly |

Parts Diagram



| <u>Illus. No.</u> | <u>Part No.</u> | <u>Qty.</u> | <u>Description</u> |
|-------------------|-----------------|-------------|---------------------------------------|
| DETAIL 3 | | | |
| 34 | 143025 | 1 | 3/8" x 3/4" N.P.T. Nylon Hose Adaptor |
| 35 | 143155 | 3 | 3/8" Brass Street Elbow |
| 36 | 143241 | 2 | 3/8" Close Nipple |
| 37 | 136987 | 1 | Water Pressure Switch |
| 38 | 319231 | 2 | S.A.F.E. Valve Bracket |
| | 165120 | 1 | S.A.F.E. Valve 24V DC |
| 39 | 143182 | 1 | 3/4" x 3/8" x 1/8" Tee |
| 40 | 318422 | 2 | S.A.F.E. Nozzle Bracket |
| 41 | 143251 | 1 | 3/8" Brass Plug |
| 42 | 143208 | 2 | 3/8" Connector |
| 43 | 150331 | 2 | #8-18 x 1/2" T20 TORX® |
| 44 | 143581 | 2 | S.A.F.E. 3/8" N.P.T. Spray Nozzle |
| | 819337 | 1 | Phase 8 Deltrol S.A.F.E. Assembly |
| | 143236 | 1 | 3/8" Brass Pipe Cross |
| | 143099 | 1 | 3/8" Copper Tubing |

| <u>Illus. No.</u> | <u>Part No.</u> | <u>Qty.</u> | <u>Description</u> |
|-------------------|-----------------|-------------|--|
| DETAIL 4 | | | |
| 45 | 185023 | 2 | Gas Pipe Bracket |
| 46 | 154356 | 2 | U-Bolt with Nuts |
| 47 | 185179 | 2 | Hot Surface Ignition Gas Pipe |
| | 143003 | 1 | Coupling |
| | 143026 | 1 | 5" Nipple |
| 48 | 130500 | 2 | Radiant Control Sensor |
| 49 | 183145 | 2 | #8-32 x 7/8" Hex Conical |
| 50 | 318979 | 2 | Gas Train Support Bracket |
| 51* | 140875 | 2 | #26 Burner Orifice (Natural Gas) |
| | 140881 | 2 | #47 Burner Orifice (Liquid Propane Gas) |
| 52 | 185061 | 2 | Hot Surface Ignition Burner Base |
| 53 | 143318 | 2 | Brass Adaptor |
| 54 | 128944 | 2 | 25m Gas Valve 120 VAC 60 Hz |
| | 128907 | 2 | 120V Valve 50 Hz |
| * | 884334 | 2 | 'M' Valve 80k Btu Liquid Propane Kit |
| 55 | 183144 | 2 | Inshot Burner Tube Hot Surface Ignition |
| 56 | 185063 | 2 | Hot Surface Ignition Ignitor Bracket |
| 57 | 128910 | 2 | Hot Surface Ignitor 80V |
| 58 | 819600 | 2 | Thermostat Assembly |
| 59 | 150331 | 16 | #8-18 x 1/2" T20 TORX® |
| 60 | 185066 | 2 | Burner Cone |
| | 319281 | 2 | Burner Cone Sleeve |
| | 819437 | 2 | 120V 60 Hz Gas Train Assembly |
| | 819813 | 2 | 230V 50 Hz Gas Train Assembly |
| | 132029 | 2 | 350VA Autotransformer (208-240) |
| DETAIL 5 | | | |
| 61 | 819347 | 2 | Lint Box Top Stud Assembly |
| 62 | 130112 | 2 | Thermostat 225° Automatic |
| 63 | 122002 | 2 | Lint Door Switch |
| 64 | 818804 | 2 | Lint Coop Blower Assembly |
| 65 | 318866 | 2 | 4 Circuit Connection Plate |
| 66 | 150331 | 2 | #8-18 x 1/2" T20 TORX® |
| 67 | 318224 | 2 | Blower Housing Rear Support Bracket |
| 68 | 818725 | 2 | Blower Housing (for models mfd. prior to April 2006) |
| | 185139 | 2 | Blower Housing (for models mfd. as of April 2006) |
| | 319904 | 2 | Blower Housing Mount (for models mfd. as of April 2006) |
| | 818975 | 2 | 120V Blower Motor Assembly |
| | 819277 | 2 | 230V Blower Motor Assembly (Phase 8) |
| | 319144 | 2 | Exhaust Extension |
| 69 | 153049 | 4 | Washer |
| 70 | 153024 | 4 | #10 Split Lock Washer |
| 71 | 152008 | 8 | #10-32 Hex Nut |
| 72 | 100623 | 2 | 25 MFD Capacitor 120 VAC 50-60 Hz |
| | 884455 | 2 | 6 MFD Capacitor 230 VAC 50-60 Hz |
| 73 | 117604 | 20 | 1/8" Thick x 3/8" Wide Neoprene Sponge Tape |
| 74 | 818803 | 2 | Lint Box Assembly |
| 75 | 818986 | 2 | Phase 8 Exhaust Temperature Sensor Assembly |
| 76 | 154007 | 4 | 1/4" Push-On Fastener |
| 77 | 117604 | 2 | 1/8" Thick x 3/8" Wide Neoprene Sponge Tape |

* Contact factory for elevations above 2,000 feet.

